

# UL 300 HOOD FIRE SUPPRESSION SYSTEM

All Fire System Piping will be 3/8" schedule 40 black iron.

NC FIRE CODE 904.11.2

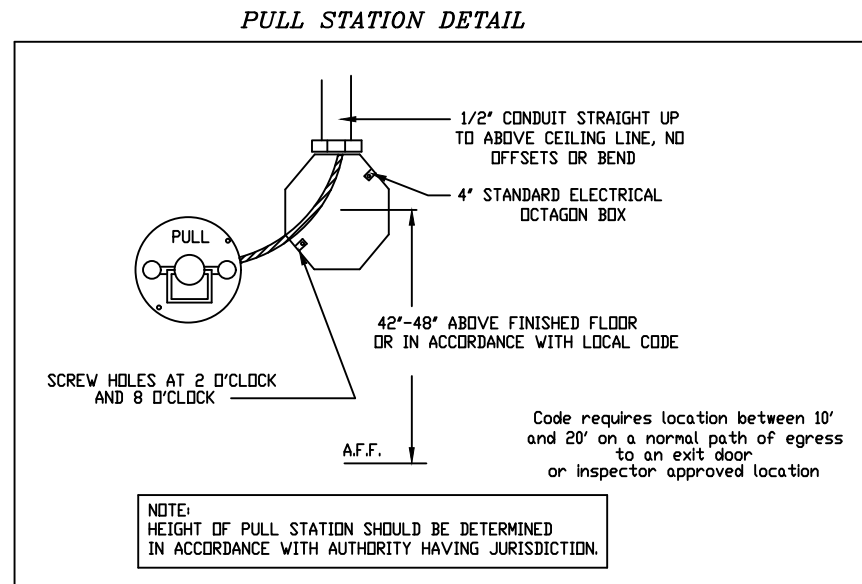
System Interconnection:  
The Actuation of the fire extinguishing system shall automatically shut down the fuel or electrical power supply to the cooking equipment. The fuel and electrical supply reset shall be manual.

CAPTIVE-AIRE HOODS ARE BUILT IN COMPLIANCE WITH:

CAPTIVE-AIRE HOODS ARE BUILT IN COMPLIANCE WITH  
    
 NFPA #96  
 NSF  
 UL 710 & ULC710 STANDARDS  
 E.T.L. LISTED 3054804-001



\*FOR QUESTIONS\*  
 CONTACT: JOE WYLIE  
 NORTH CAROLINA REGIONAL OFFICE  
 PHONE: (919) 825-3566  
 EMAIL: REG36@CAPTIVEAIRE.COM FAX: (919) 227-5917



## FIRE SYSTEM OPERATION

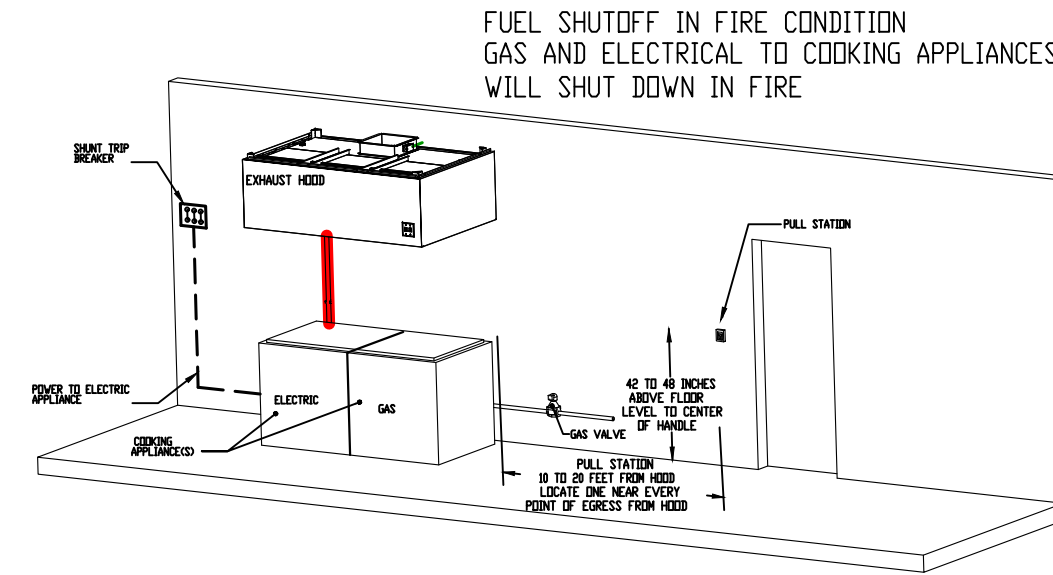
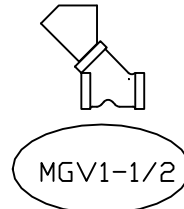
- Kitchen hood shall be constructed and installed per NFPA 96.
- Hood Electrical Control Panel and Fire Control System shall shut down kitchen hood make up air fan upon activation of fire extinguishing system. Kitchen hood exhaust fan shall continue to operate or power on upon activation. The hood electrical panel and fire system will provide interlock for automatic operation of fire suppression system with:
  - Mechanical gas valve (installed by mechanical/plumbing contractor, if gas used)
  - Hood supply and exhaust fan (wiring by elec)
  - Remote manual pull station (by hood fire system distr)
  - Fire alarm system notification (if Bldg Fire Alarm present, by Fire alarm Contractor)
- See Hood details for drawings
- All exposed piping with fire suppression system shall be covered with a chrome sleeve.
- Mechanical contractor shall install conduit in wall for manual pull station. Pull Station shall be located at or near a means of egress from the cooking area.
- Fire suppression system shall be in accordance with UL 300.

## NOTES

- FIELD PIPE DROPS AS SHOWN SLEEVING, ELBOWS, TEES, AND NOZZLES SUPPLIED BY CAS
- RELOCATE NOZZLES IF FLOW PATTERN IS BLOCKED BY SHELVING, SALAMANDERS, ETC.
- MAXIMUM 9 ELBOWS IN SUPPLY LINE.
- MINIMUM 72 INCHES OF AGENT LINE FROM TANK TO FIRST NOZZLE.
- IF APPLICABLE, PRE-PIPED CHARBROILER DROPS ARE SHIPPED LOOSE.
- FACTORY PIPING EXTENDS A MAXIMUM OF 6' ABOVE THE TOP OF THE HOOD.
- APPLIANCE DIMENSIONS LISTED REPRESENT THE COOKING SURFACE SIZE, NOT THE OVERALL APPLIANCE SIZE.
- THIS FIRE SYSTEM COMPLIES WITH U.L. 300 REQUIREMENTS

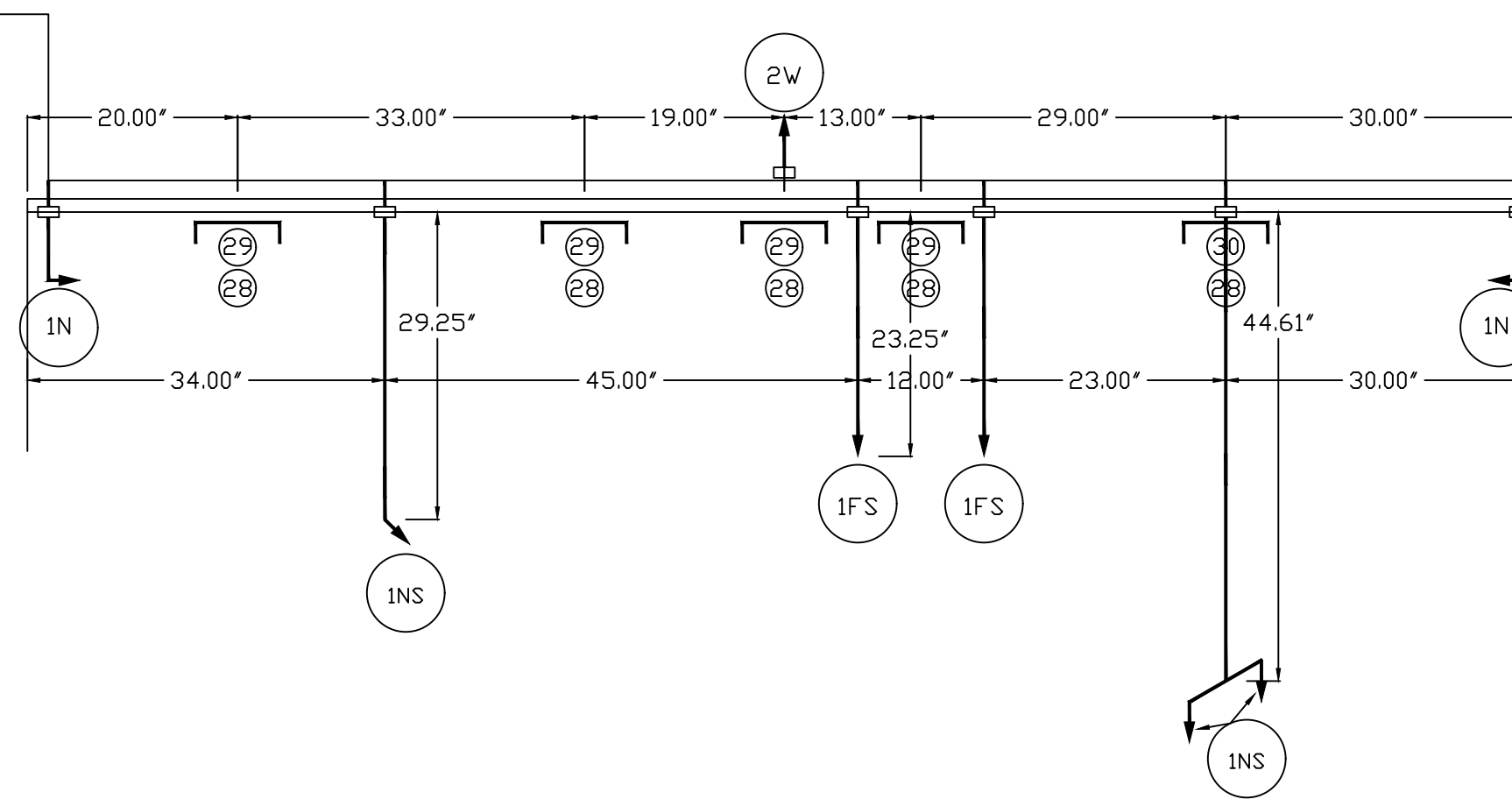
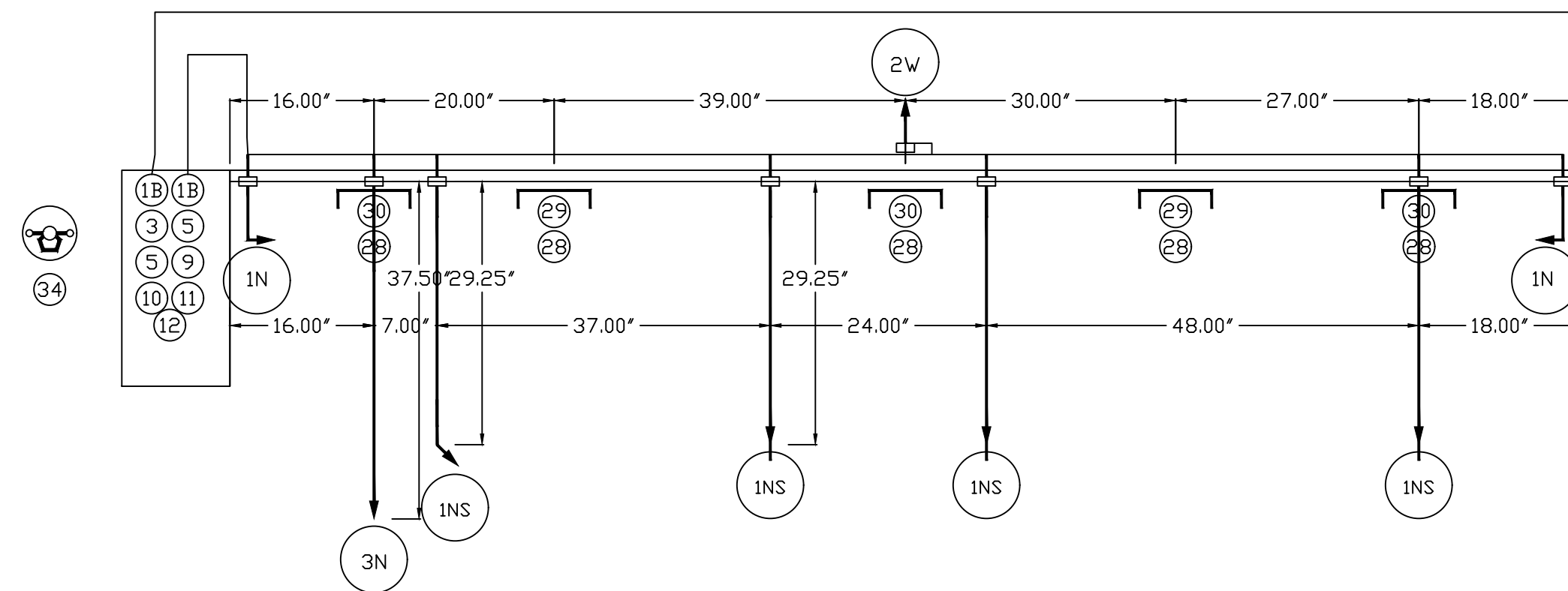
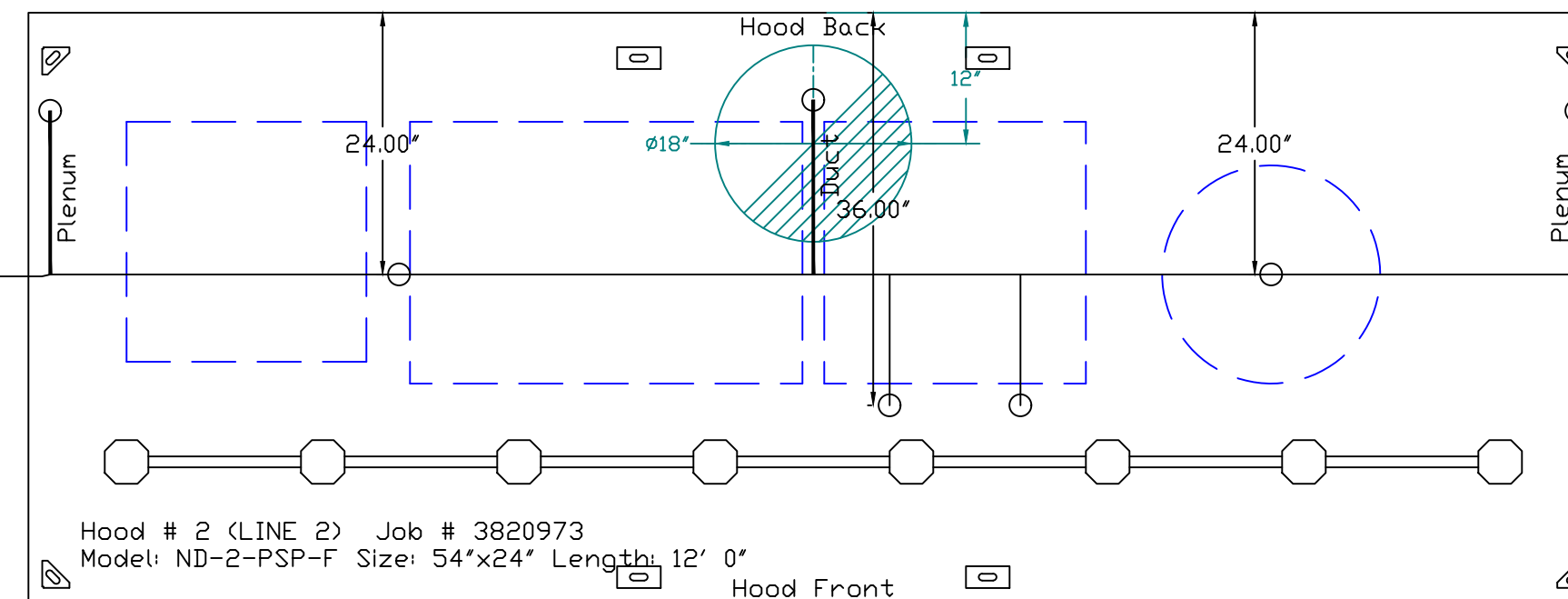
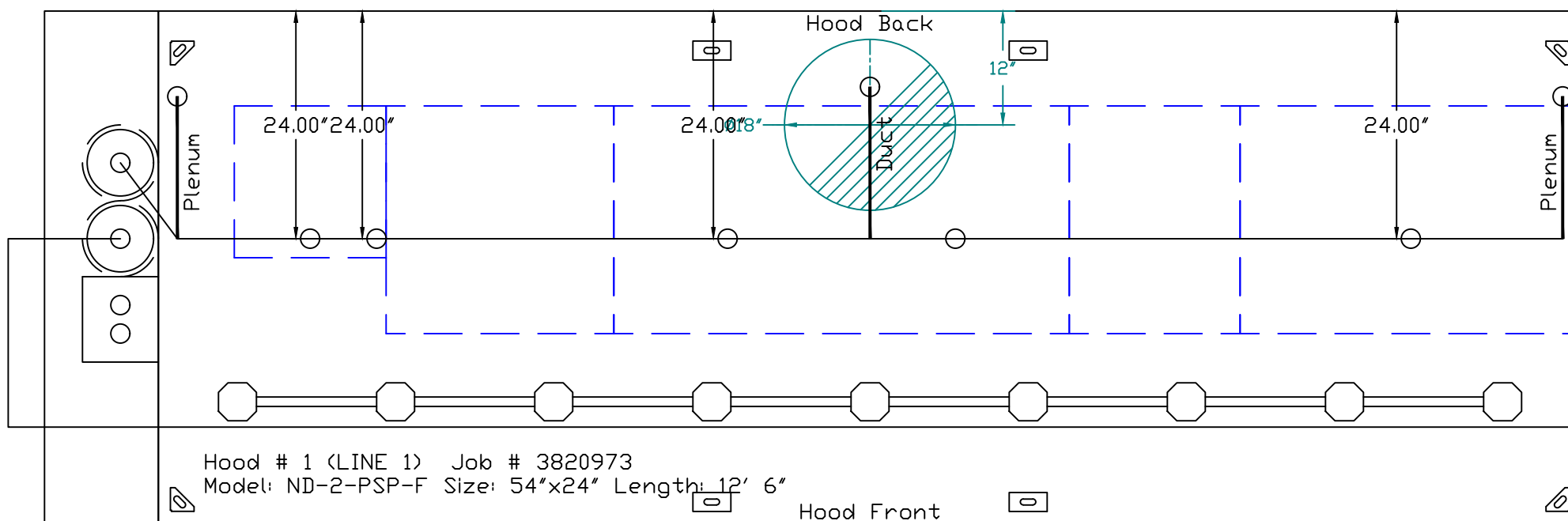
Job #: 3820973  
 Job Name: LILLINGTON HIBACHI 050719

System Size: ANSUL-3.0/3.0 Total FP required: 20  
 Hood # 1 12' 6.00" Long x 54" Wide x 24" High  
 Riser # 1 Size: 18" Dia.  
 Hood # 1 Metal Blow-Off Caps included.  
 Hood # 2 12' 0.00" Long x 54" Wide x 24" High  
 Riser # 1 Size: 18" Dia.  
 Hood # 2 Metal Blow-Off Caps included.



\*\* Below Work to be performed by Factory Trained & Certified T&B Servicing Agent: \*\*  
 - Verify that all components are installed correctly and are in accordance with as-built drawings  
 - All equipment to be commissioned per start-up procedures in D&IM documents  
 - Check fan rotation, belt tension, blower and motor rpm, amperage and adjust if necessary  
 - Complete Hood/Fans Test & Balance Worksheet using Shortridge Airdata Multimeter and provide to Mechanical Engineer  
 - Verify and adjust equipment to assure hood captures correctly and features perform as designed  
 - Consult with contractors to provide answers to their questions directly or via technical support line  
 - Provide guidance on the proper function and maintenance of equipment to Owners or General Contractors  
 - Complete Manufacturers Startup and Warranty form and send copy to Mechanical Engineer for their files

Reviewed For Code Compliance By:  
**D. Banks Wallace**  
 Chief Deputy Fire Marshal  
 11/21/2019 9:35:56 AM



## LEGEND - FIRE CABINET ANSUL SYSTEM

- 1A 1.5 GALLON TANK
- 1B 3 GALLON TANK
- 2 OEM AUTOMAN RELEASE
- 3 OEM REGULATED RELEASE
- 4 OEM REGULATED ACTUATOR
- 5 ANSULEX LIQUID AGENT (3 GAL.)
- 6 ANSULEX LIQUID AGENT (1.5 GAL.)
- 7 CARTRIDGE (101-20)
- 8 CARTRIDGE (101-10)
- 9 CARTRIDGE (101-30)
- 9A CARTRIDGE (LT-A-101-30)
- 9B DOUBLE TANK CARTRIDGE
- 10 TEST LINK
- 11 DOUBLE MICROSWITCH
- 12 HOSE ASSEMBLY
- 1100 DUCT NOZZLE (430913)
- 2W DUCT NOZZLE (419337)
- 1W NOZZLE ASSEMBLY (419336)
- 1F NOZZLE ASSEMBLY (419333)
- 1N NOZZLE ASSEMBLY (419335)
- 1/2N NOZZLE ASSEMBLY (419334)
- 3N NOZZLE ASSEMBLY (419338)
- 245 NOZZLE ASSEMBLY (419340)
- 230 NOZZLE ASSEMBLY (419339)
- 2120 NOZZLE ASSEMBLY (419343)
- 290 NOZZLE ASSEMBLY (419342)
- 260 NOZZLE ASSEMBLY (419341)
- 28 DETECTOR BRACKET
- 29 LOW TEMP FUSIBLE LINK
- 30 HIGH TEMP FUSIBLE LINK
- MGV MECHANICAL GAS VALVE
- EGV ELECTRICAL GAS VALVE
- 34 REMOTE MANUAL PULL STATION
- S SWIVEL ADAPTOR

Fryer-M w/Drip Board High Proximity 16.00' L x 16.00' D	Griddle (LN) High Proximity 24.00' L x 24.00' D	Gas Radiant Charbroiler S High Proximity 48.00' L x 24.00' D	Oven High Proximity 18.00' L x 24.00' D	Gas Radiant Charbroiler S High Proximity 36.00' L x 24.00' D	Rice Cooker (No Coverage) High Proximity 22.00' Diameter	Griddle (LN) High Proximity 36.00' L x 24.00' D	Range Shelf (20" min from High Proximity 24.00' L x 24.00' D	Stack Pot Range High Proximity 18.00' L x 18.00' D
---	---	---	---	---	--	---	--	--

**REVISIONS**

DESCRIPTION	DATE

**CAPTIVEAIRE**  
 Eastern North Carolina  
 www.captiveaire.com  
 4641 Paragon Park Rd., Raleigh, NC, 27616 PHONE: (919) 825-3666 FAX: (919) 227-5917 EMAIL: reg36@captiveaire.com

LILLINGTON HIBACHI 050719  
 133 W CORNELIUS, HARNETT BLVD, LILLINGTON, NC, 27546  
 LILLINGTON, NC, 27546

DATE: 5/7/2019  
 DWG.#: 3820973  
 DRAWN BY: reg36  
 SCALE: 3/4" = 1'-0"  
 MASTER DRAWING

**SHEET NO.**  
 4