











CAROL Edwards  
555 North  
Sanford Ave New Dr.  
27332

**WARNING!**

READ ELECTRICAL CODES AND INSTRUCTIONS  
BEFORE INSTALLATION. EACH UNIT IS  
EQUIPPED WITH A FUSE. DO NOT REMOVE OR  
REPLACE FUSE WITHOUT CONSULTING  
A QUALIFIED ELECTRICIAN. FAILURE TO  
FOLLOW THESE INSTRUCTIONS MAY  
RESULT IN ELECTRICAL SHOCK OR  
FIRE. ALWAYS USE PROPER  
SAFETY PRECAUTIONS.

SEE INSTALLATION MANUAL  
FOR WIRING INSTRUCTIONS  
AND SAFETY PRECAUTIONS.  
© 2000 STANLEY ELECTRIC CO.  
STANLEY ELECTRIC CO.





EZ  
SOLAR

JB-1-XL

PHOTOVOLTAIC POWER SOURCE

Patents: [ezsolarproducts.com/patents](http://ezsolarproducts.com/patents)

MADE IN  
USA





PHOTOVOLTAIC POWER SOURCE

2001

13

MILL 229

EXPOSURE 1

WATER

2001















































5566 E  
Northview Dr  
Sanford, NC 28384





5553



Share Faith Offer Prayer Gather Hope  
The Edwards



1

Carol Edwards  
555 Northview Dr  
Sanford, NC 27332

























S440  
DO NOT  
REMOVE

019221BFC-52



Made in USA  
from imported parts



SolarEdge Technologies Ltd.  
Power Optimizer

Solaredge Technologies GmbH/  
Werner-Eckert-Straße 6/81829  
Munich/Germany

## CAUTION

HOT SURFACES-TO REDUCE THE  
RISK OF BURNS-DO NOT TOUCH.  
RISK OF ELECTRIC SHOCK-WHEN THE  
PHOTOVOLTAIC ARRAY IS EXPOSED TO  
LIGHT, IT SUPPLIES A DC VOLTAGE TO  
EQUIPMENT. COVER PV MODULE WITH  
OPAQUE MATERIAL BEFORE CONNECTING OR DISCONNECTING THIS OPTIMIZER.  
DURING FAULT, ZERO CURRENT IS SOURCED INTO DC ARRAY BY CONVERTER.

PHOTOVOLTAIC























solar<sup>edge</sup>

HD wave









## General Duty Safety Switch

Interrupteur de sécurité à usage général

Interruptor de seguridad de servicio general

60 A, 240 V~, 60 Hz

Complete ratings inside

Valeurs nominales complètes à l'intérieur

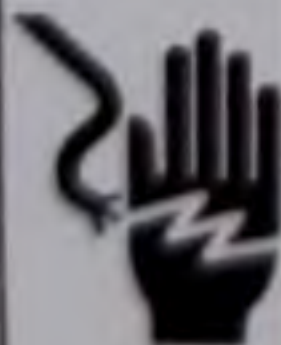
Información completa de capacidades en el interior

Further instructions inside

Autres instructions à l'intérieur

Instrucciones adicionales en el interior

Made in U.S.A. / Fabriqué aux É.-U. / Hecho en E.U.A.



### **⚠ DANGER**

**HAZARDOUS VOLTAGE. WILL CAUSE SEVERE INJURY OR DEATH.**

- Never operate switch with cover open.
- Turn OFF power ahead of switch before doing any work inside. Replace all parts. Close cover before turning power ON.

**TENSION DANGEREUSE. PEUT CAUSER DES BLESSURES GRAVES OU LA MORT.**

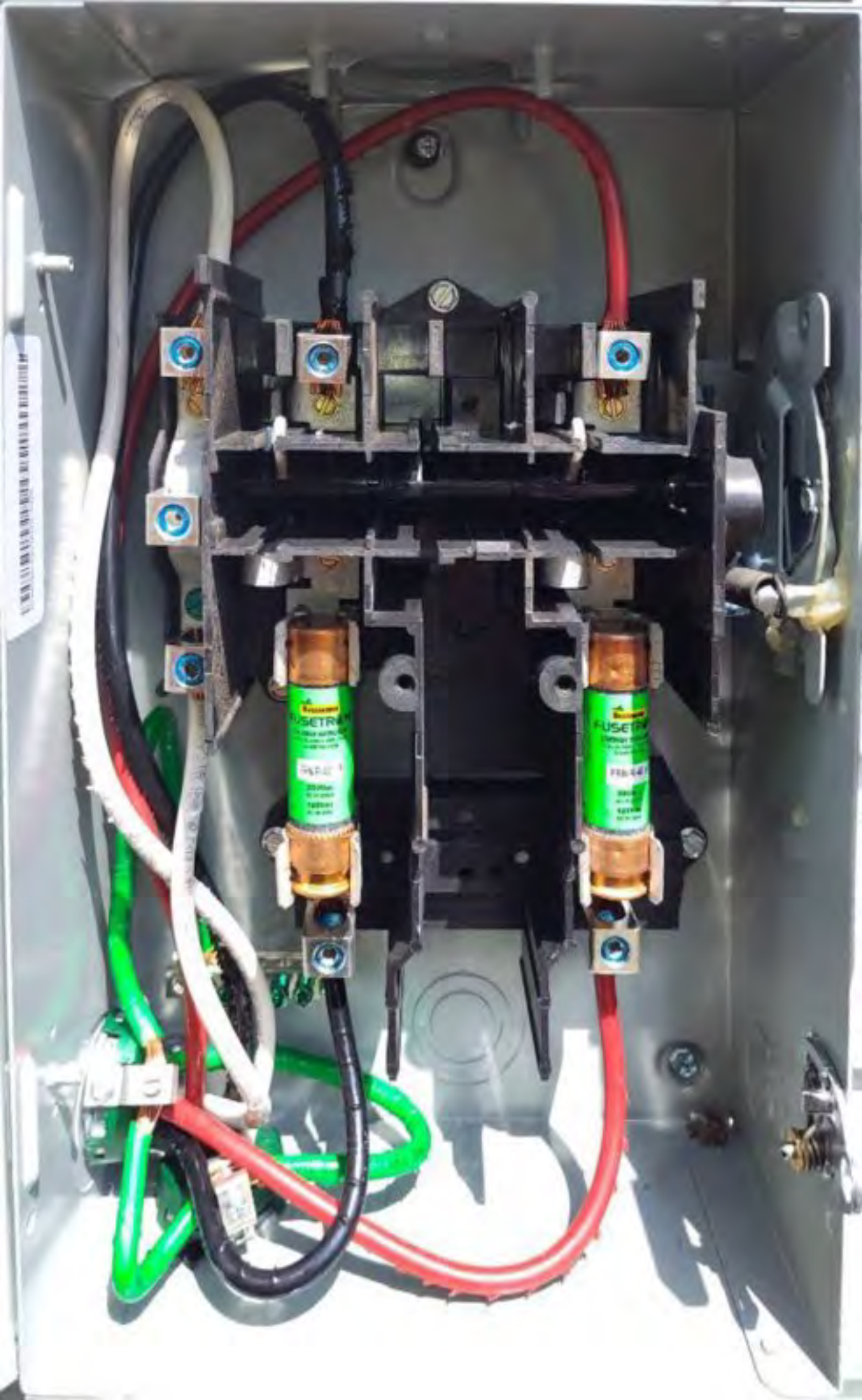
- Ne jamais manœuvrer l'interrupteur lorsque le couvercle est ouvert.
- Couper l'alimentation en amont de l'interrupteur avant toute intervention. Remplacer les pièces. Fermer le couvercle avant de remettre sous tension.

### **⚠ PELIGRO**

**VOLTAJE PELIGROSO. PUEDE CAUSAR HERIDAS SEVERAS O LA MUERTE.**

- Nunca opere el interruptor con la cubierta abierta.
- Desconectar la alimentación del interruptor antes de trabajar dentro del mismo. Reemplazar todas las partes. Cerrar la cubierta antes de energizar el interruptor.









Bussmann  
**FUSETRON**  
ENERGY EFFICIENT  
DUAL-ELEMENT TIME-DELAY  
CLASS RK5 FUSE  
FRN-R-40  
250Vac  
AC IR 200kA  
125Vdc  
DC IR 20kA

Bussmann  
**FUSETRON**  
ENERGY EFFICIENT  
DUAL-ELEMENT TIME-DELAY  
CLASS RK5 FUSE  
FRN-R-40  
250Vac  
AC IR 200kA  
125Vdc  
DC IR 20kA



**solar edge**

# DC Safety Switch



AS3014-034-3

Max DC Voltage	500 V
Max DC Current	20 A
Ambient Temperature	-40°C to +60°C
Enclosure NEMA Rating	Type 3R

PHOTOVOLTAIC RAPID SHUTDOWN SYSTEM

Use No. 16-6AWG, 75°C -90°C copper wires only.

WARNING: Hot Surface

ATTENTION: Surface chaude

DCD-1PH-US-S4H-F

PN:



SM0123-12050EB90-EB

SN:

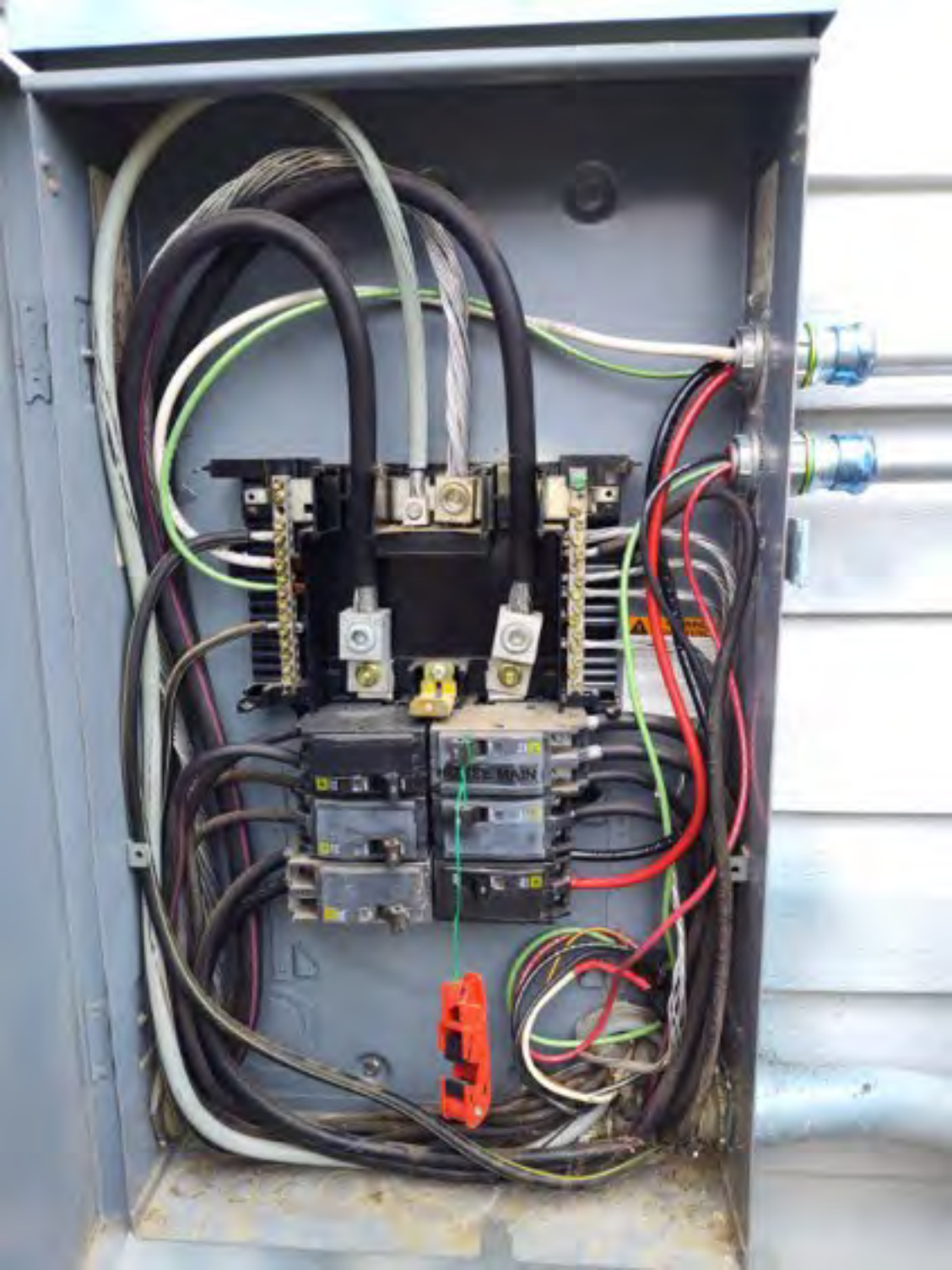


Made In Mexico



**Intertek**  
4004590







Isolated Photovoltaic Inverter  
Operating Voltage Range 270 – 460Vdc  
Max Input Current 20Ade  
Max Continuous Output Power 7600Wac

Voltage Min – Nom – Max 211 – 240 – 264Vac  
Max Continuous Output Current 32Aac

Max Output Fault Current 72Aac  
Max Utility Backfeed Current 0Aac  
Frequency Min – Nom – Max 59.3 – 60.0 – 60.5Hz  
Output Power Factor  $+/- 0.85 - 1$   
Max Ambient Temperature 60 C

Enclosure IP65 / NEMA 4X  
With integrated ground fault protection per NEC 690.35 (G)

Type 1 Photovoltaic Arc – Fault Circuit – Protection  
COMPLIES WITH SUPPLEMENTAL INTERCONNECTION REQUIREMENTS

Wi – Fi Password: c2Q3TbZy  
Activation: 8Ndp m1z1 15zt Hvq/ S0xh Vks5 e98 =

WIFI MAC:  
84:D6:C5:62:C2:63  
ZigBee MAC:



Intertek

4004590

PN: SE7600H – US000BEU4  
SN: SM2923 – 074143C79 – 3D













# EATON®

General Duty Safety Switch

Interrupteur de sécurité à usage général

Interruptor de seguridad de servicio general

60 A, 240 V~, 60 Hz

Complete ratings inside

Valeurs nominales complètes à l'intérieur

Información completa de capacidades en el interior

Further instructions inside

Autres instructions à l'intérieur

Instrucciones adicionales en el interior

Made in U.S.A. / Fabriqué aux É.-U. / Hecho en E.U.A.



## ⚠ DANGER

**HAZARDOUS VOLTAGE. WILL CAUSE SEVERE INJURY OR DEATH.**

- Never operate switch with cover open.
- Turn OFF power ahead of switch before doing any work inside. Replace all parts. Close cover before turning power ON.

**TENSION DANGEREUSE. PEUT CAUSER DES BLESSURES GRAVES OU LA MORT.**

- Ne jamais manœuvrer l'interrupteur lorsque le couvercle est ouvert.
- Couper l'alimentation en amont de l'interrupteur avant toute intervention. Remplacer les pièces. Fermer le couvercle avant de remettre sous tension.

## ⚠ PELIGRO

**VOLTAJE PELIGROSO. PUEDE CAUSAR HERIDAS SEVERAS O LA MUERTE.**

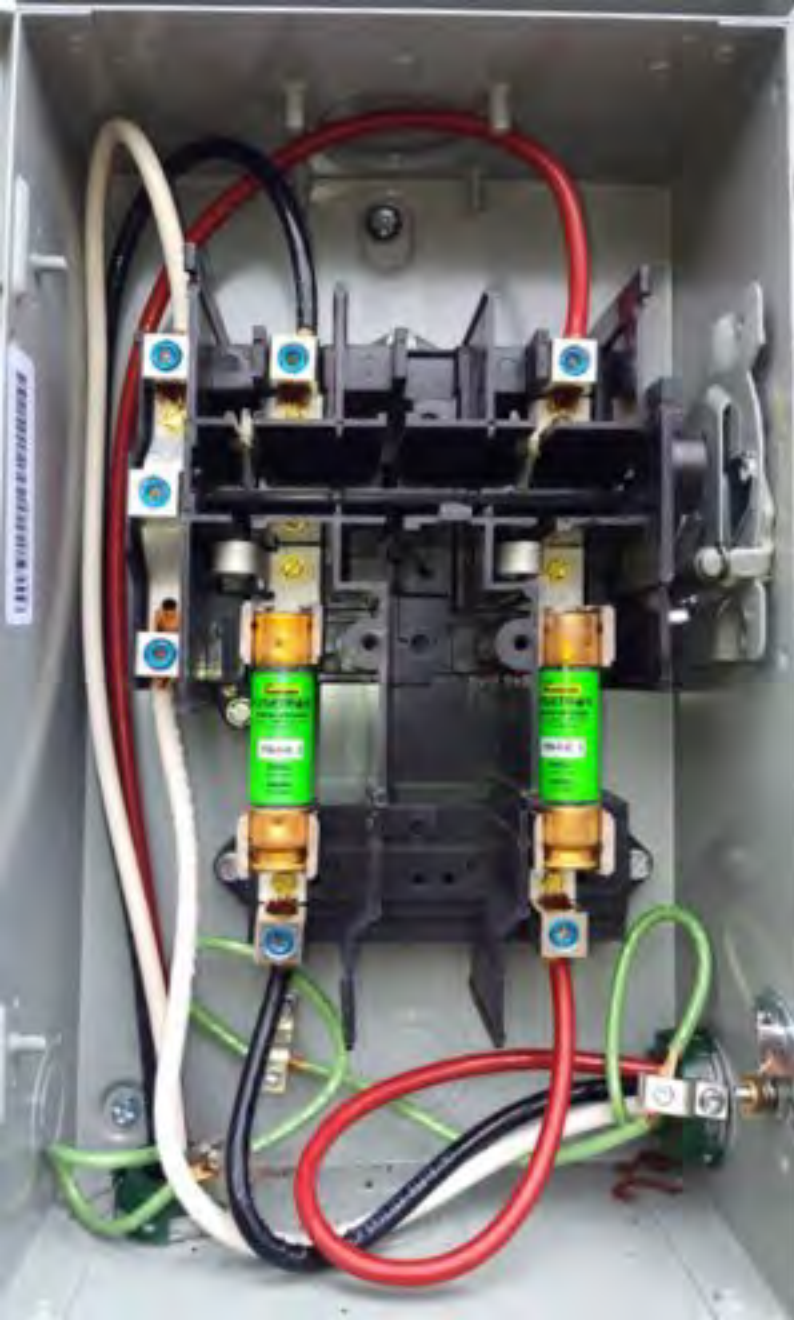
- Nunca opere el interruptor con la cubierta abierta.
- Desconectar la alimentación del interruptor antes de trabajar dentro del mismo. Reemplazar todas las partes. Cerrar la cubierta antes de energizar el interruptor.



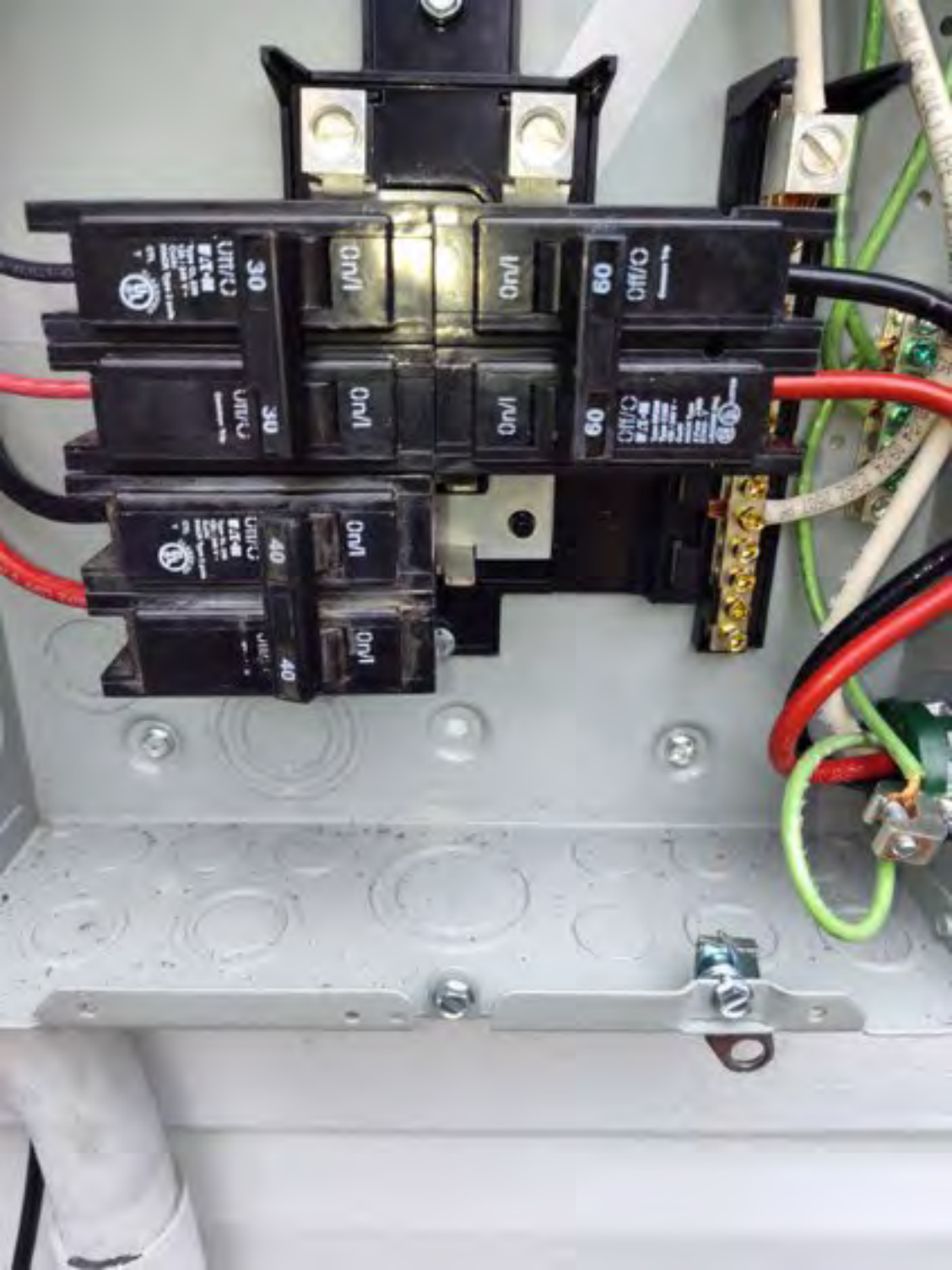




PHASE 1  
PHASE 2  
PHASE 3  
PHASE 4  
PHASE 5  
PHASE 6  
PHASE 7  
PHASE 8  
PHASE 9  
PHASE 10  
PHASE 11  
PHASE 12

















AC

## Solar



Sub  
Main feed