



Robbie Eason

1009 Warren Rd, Erwin, NC 28339

Homeowner information

Homeowner Name Robbie Eason

Date of Installation 03/13/2025

Address 1009 Warren Rd, Erwin, NC 28339

Glass Pictures/Panel Info

Attic

Electrical Equipment

Fuse Rating 80

MEP: Nameplate with busbar rating 200

Roof

Final Signoff

Customer Completion Signature

Change Order

Crew lead on site Henrique Dias

Installers On Site Tobias Bright. Dalton Carpenter. Nathan Price.

Optional Installer Notes



Loc: 35.3155, -78.6641



Loc: 35.3163, -78.6646



Loc: 35.3163, -78.6651



Loc: 35.3163, -78.6653



Loc: 35.3163, -78.6654



Loc: 35.3164, -78.6653



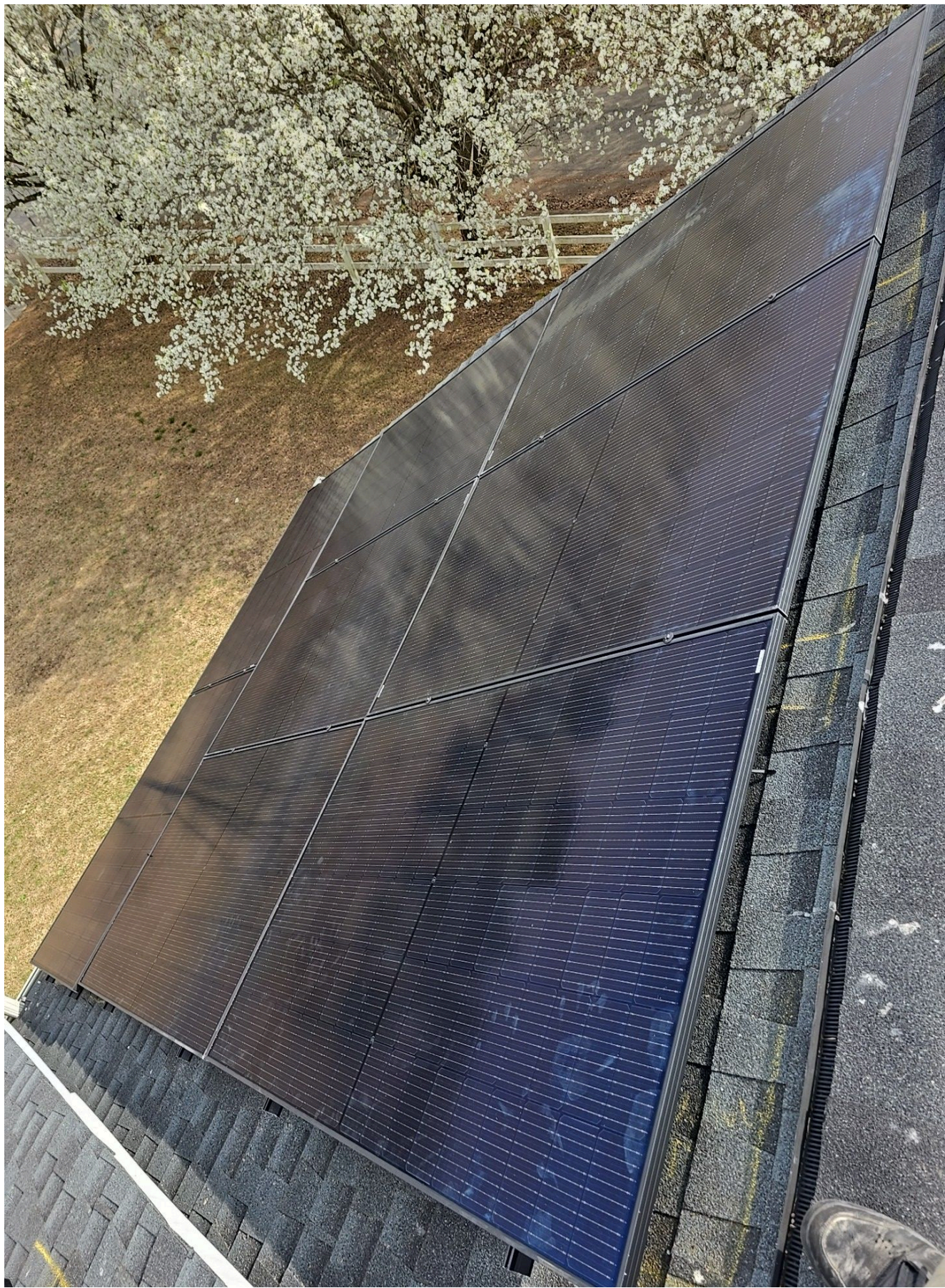
Loc: 35.3164, -78.6654



Loc: 35.3164, -78.6654



Loc: 35.3164, -78.6653





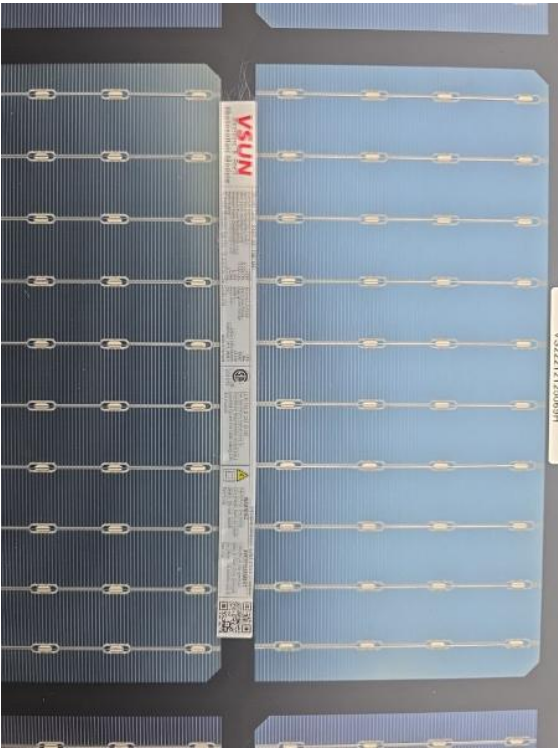


Report Created: 03/31/2025



Loc: 35.3159, -78.6654

Glass Pictures/Panel Info / Back of Panel (Module Label)



Loc: 35.3159, -78.6654

Glass Pictures/Panel Info / Back of Panel (Module Label)



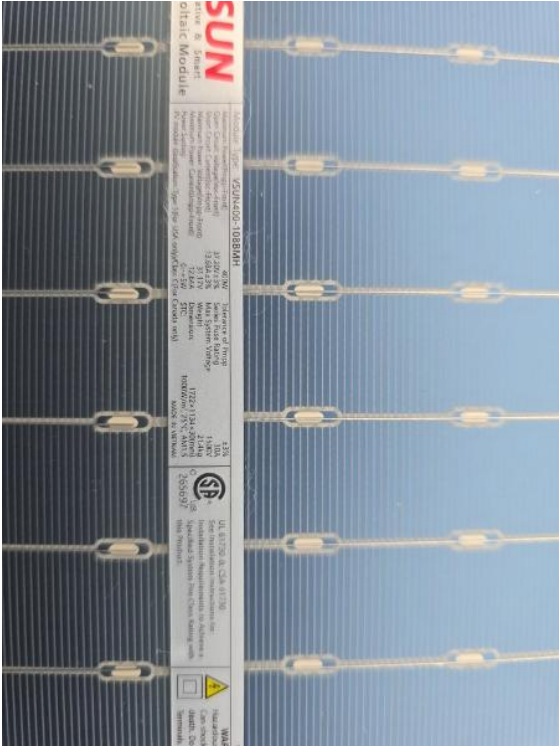
Loc: 35.3159, -78.6654

Glass Pictures/Panel Info / Back of Panel (Output Info)



Loc: 35.3159, -78.6654

Glass Pictures/Panel Info / Back of Panel (Output Info)



Loc: 35.3159, -78.6654

Attic / Entry point of conduit



Loc: 35.316, -78.6655

Attic / Sealed entry point



Loc: 35.3159, -78.6655

Attic / Attic conduit runs (3-4 images)



Loc: 35.316, -78.6655

Attic / Attic conduit runs (3-4 images)



Loc: 35.3159, -78.6655

Attic / Attic conduit runs (3-4 images)



Loc: 35.3159, -78.6655

Attic / Attic conduit runs (3-4 images)



Loc: 35.3159, -78.6655

Attic / Attic conduit runs (3-4 images)



Loc: 35.316, -78.6655

Attic / Attic conduit runs (3-4 images)



Loc: 35.316, -78.6655

Attic / Attic conduit runs (3-4 images)



Loc: 35.3159, -78.6655

Attic / Attic conduit runs (3-4 images)



Loc: 35.3159, -78.6655

Attic / Attic conduit runs (3-4 images)



Loc: 35.3159, -78.6655

Attic / Attic conduit runs (3-4 images)



Loc: 35.3159, -78.6655

Attic / Attic conduit runs (3-4 images)



Loc: 35.3159, -78.6655

Attic / Attic conduit runs (3-4 images)



Loc: 35.3159, -78.6655



Loc: 35.316, -78.6656



Loc: 35.316, -78.6655



Loc: 35.316, -78.6657



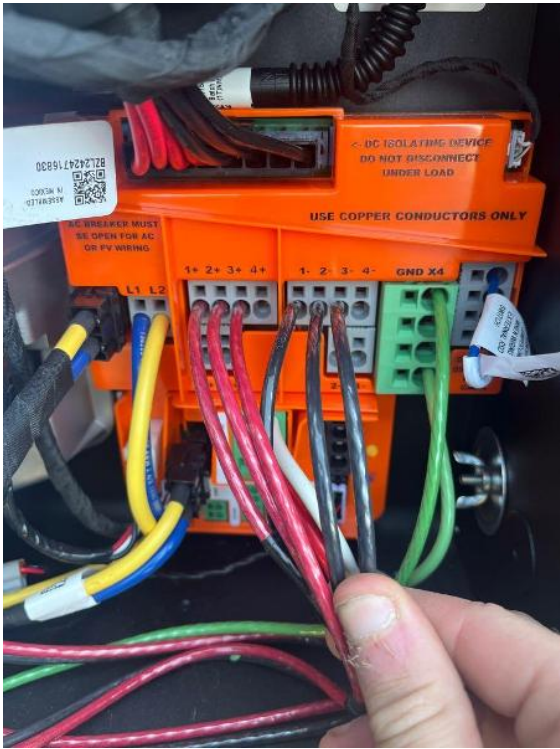
Loc: 35.316, -78.6657

Electrical Equipment / Inverter-inside wiring



Loc: 35.316, -78.6656

Electrical Equipment / Wiring Terminations



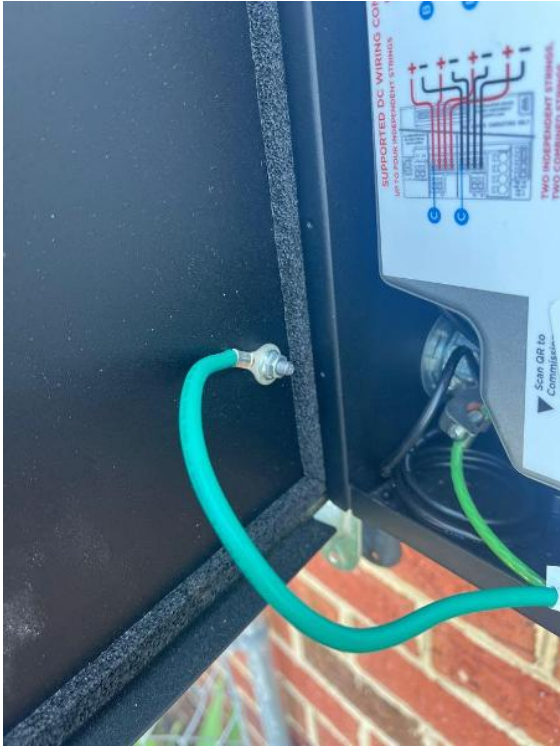
Loc: 35.316, -78.6656

Electrical Equipment / Bonding Bushing inside inverter



Loc: 35.316, -78.6656

Electrical Equipment / Ground Lug inside inverter



Loc: 35.316, -78.6656

Electrical Equipment / Ground Lug inside inverter



Loc: 35.316, -78.6656



Loc: 35.316, -78.6657

Electrical Equipment / Disconnect - With cover open



Loc: 35.316, -78.6656

Electrical Equipment / Disconnect - With cover open



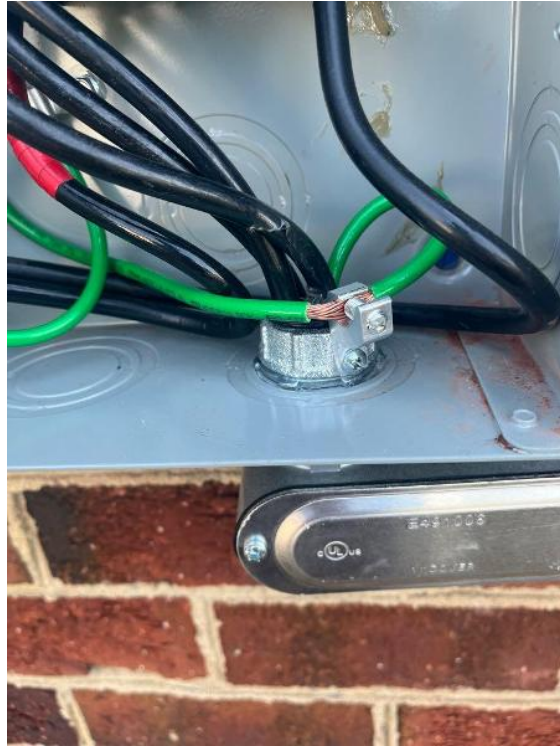
Loc: 35.316, -78.6656

Electrical Equipment / Disconnect - With cover open



Loc: 35.316, -78.6656

Electrical Equipment / Bonding Bushing in AC disconnect (2)



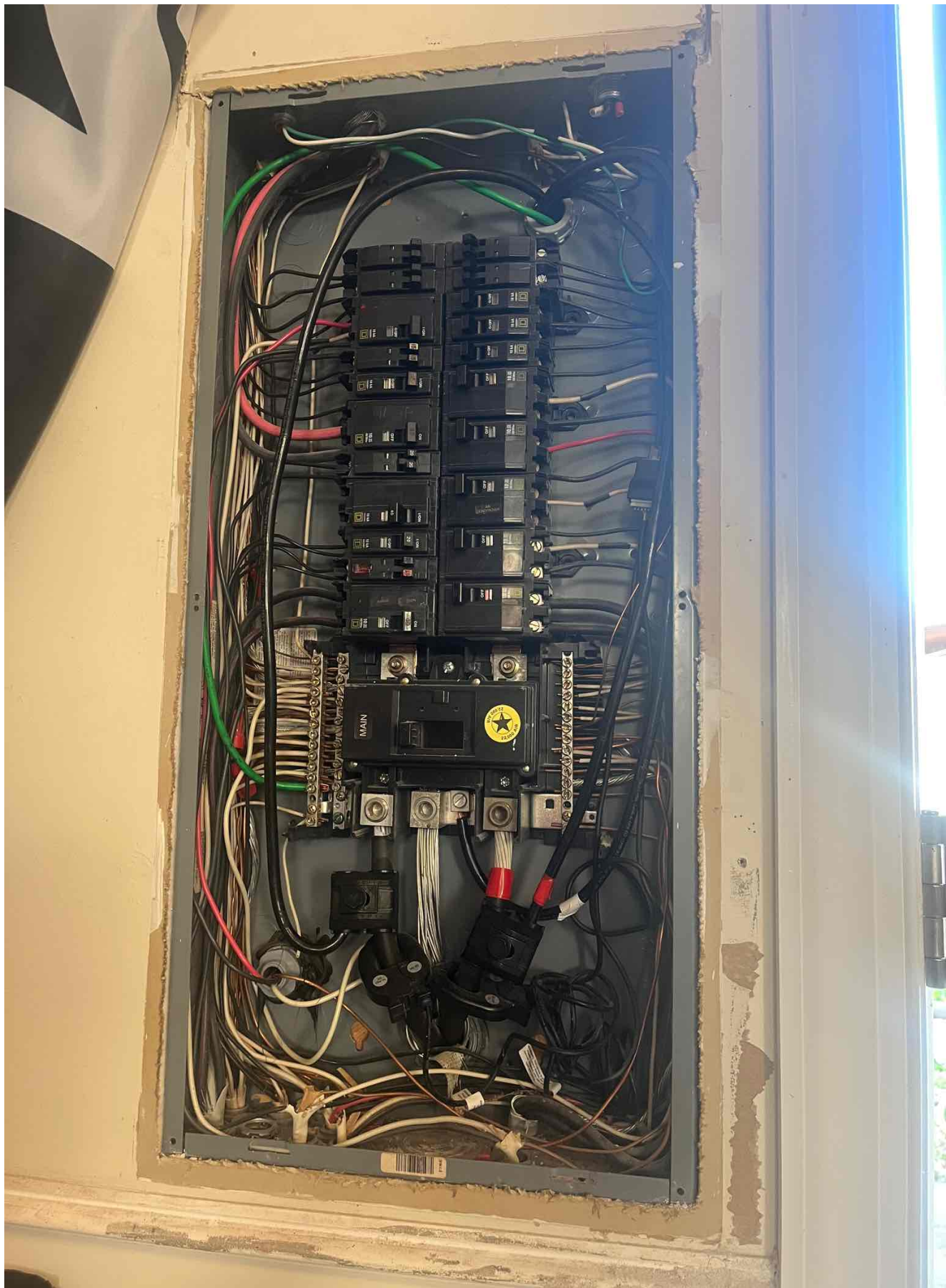
Loc: 35.316, -78.6656



Loc: 35.316, -78.6656



Loc: 35.316, -78.6657



Loc: 35.316, -78.6656



Loc: 35.316, -78.6654

Electrical Equipment / MEP W/ Labeled Breaker



Loc: 35.3158, -78.6655

Electrical Equipment / MEP: Nameplate with busbar rating



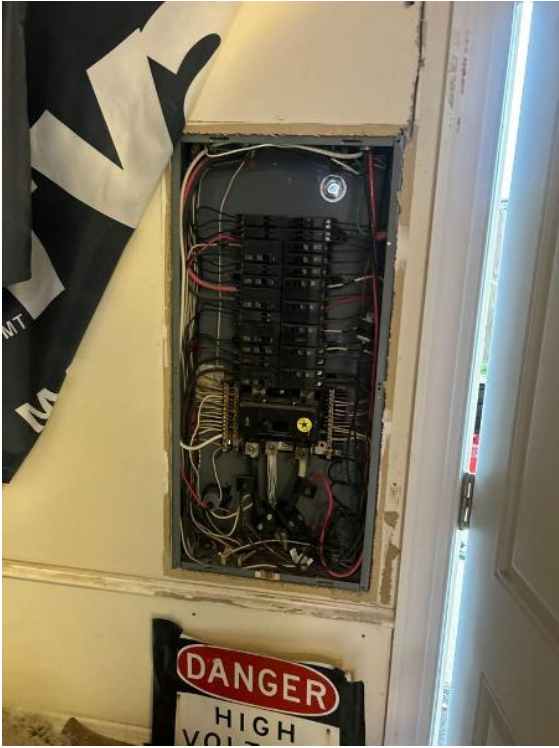
Loc: 35.316, -78.6656

Electrical Equipment / MEP: Nameplate with busbar rating



Loc: 35.316, -78.6656

Electrical Equipment / Photo of all service panels



Loc: 35.316, -78.6656

Electrical Equipment / Interconnection Point: Up Close



Loc: 35.3159, -78.6655

Electrical Equipment / Interconnection Point: Up Close



Loc: 35.3159, -78.6654

Electrical Equipment / Interconnection Point: Up Close



Loc: 35.316, -78.6654

Electrical Equipment / Interconnection point: Pulled Back



Loc: 35.316, -78.6656



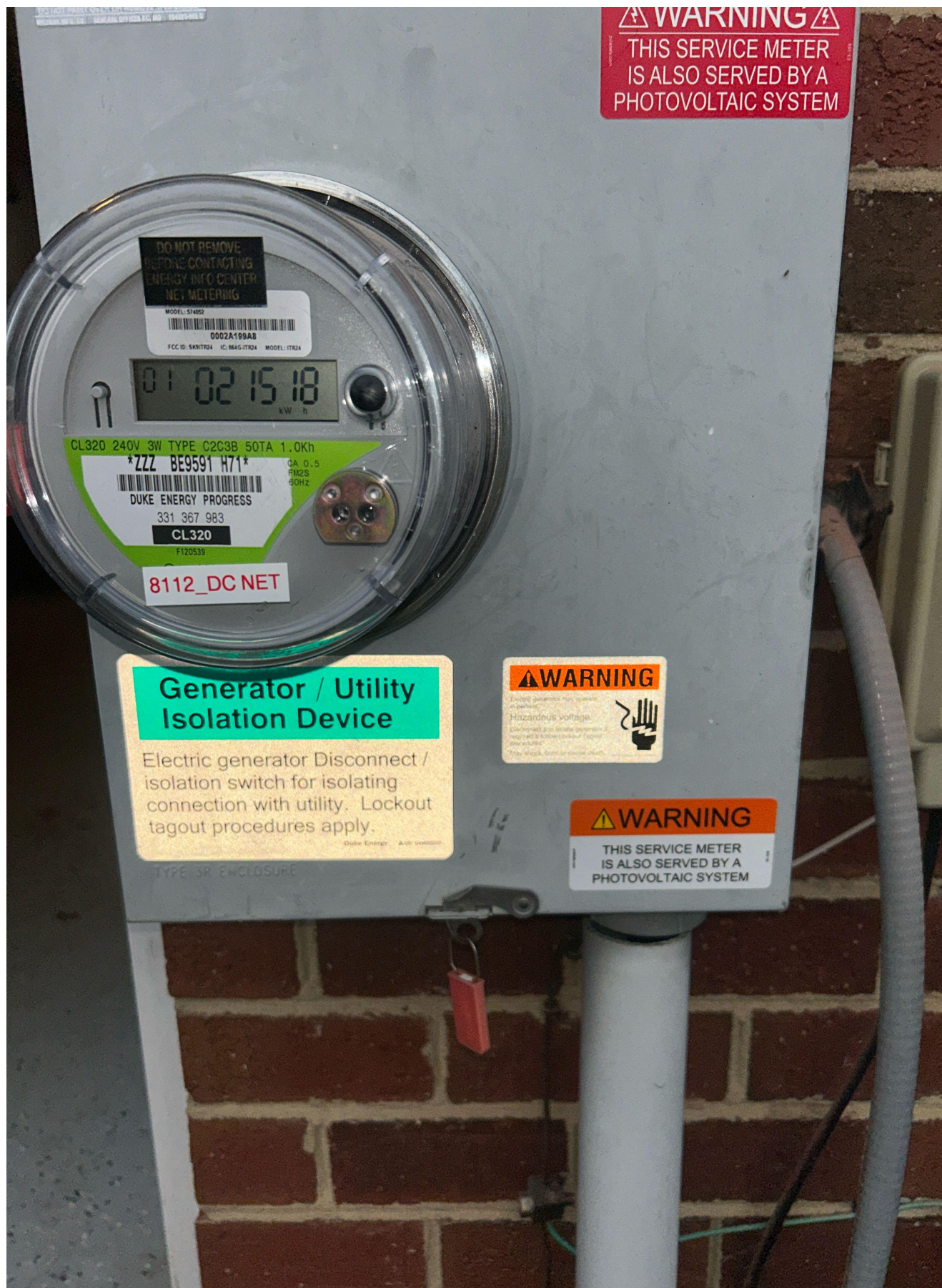
Loc: 35.316, -78.6657



Loc: 35.316, -78.6656



Loc: 35.316, -78.6656



Loc: 35.316, -78.6656

Electrical Equipment / Ground Rod



Loc: 35.316, -78.6656

Electrical Equipment / Ground Rod



Loc: 35.316, -78.6656

Electrical Equipment / Ground wire



Loc: 35.316, -78.6656

Electrical Equipment / Ground wire



Loc: 35.316, -78.6656

Electrical Equipment / Ground wire



Loc: 35.316, -78.6656

Electrical Equipment / Ground wire



Loc: 35.316, -78.6655



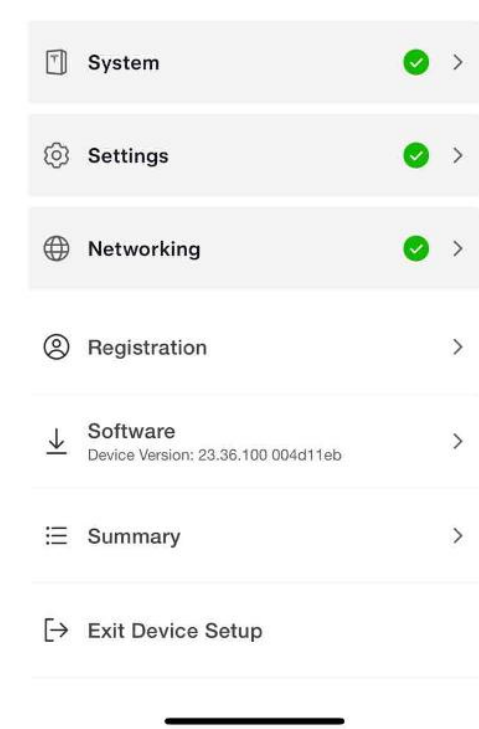
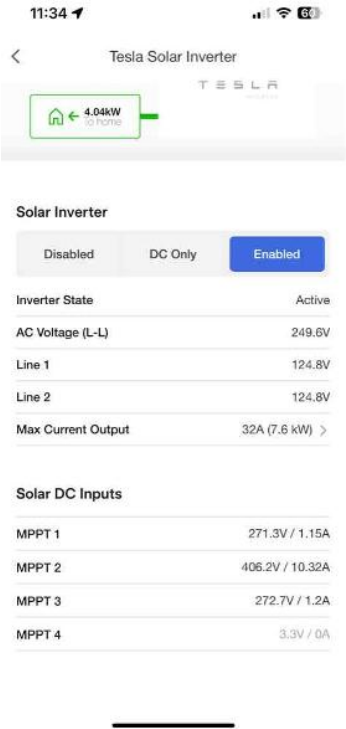
Loc: 35.316, -78.6656



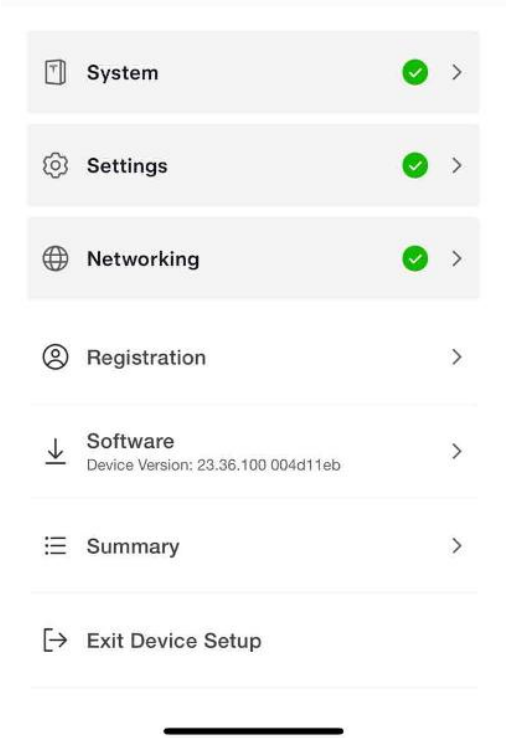
Loc: 35.316, -78.6656



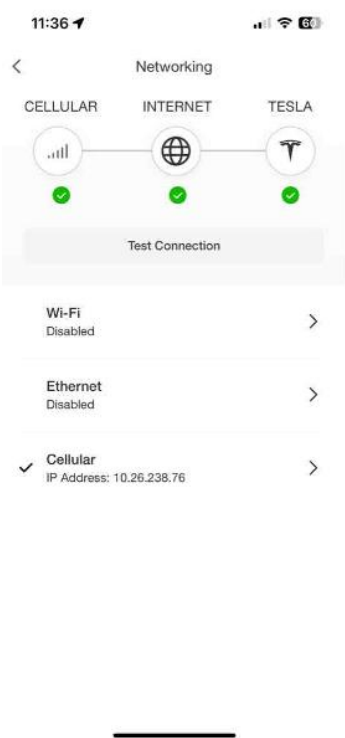
Loc: 35.316, -78.6656



Electrical Equipment / Commission Complete: screenshot of all strings/ micros/optis reporting



Electrical Equipment / Commission Complete: screenshot of all strings/ micros/optis reporting



Electrical Equipment / Commission Complete: screenshot of all strings/
micros/optis reporting

11:34

<

Tesla Solar Inverter

TESLA

ENERGY

4.04kW

to home

Solar Inverter

Disabled

DC Only

Enabled

Inverter State

Active

AC Voltage (L-L)

249.6V

Line 1

124.8V

Line 2

124.8V

Max Current Output

32A (7.6 kW)

>

Solar DC Inputs

MPPT 1

271.3V / 1.15A

MPPT 2

406.2V / 10.32A

MPPT 3

272.7V / 1.2A

MPPT 4

3.3V / 0A

Roof / Rail Mounts (close up)





Roof / Rail Mounts - Roof Run



Roof / Rail Mounts - Roof Run





Roof / Rail Pictures - 5-6 photos



Roof / Rail Pictures - 5-6 photos



Roof / Rail Pictures - 5-6 photos



Roof / Rail Pictures - 5-6 photos







Roof / Grounding Connection between rails at each array



Roof / Grounding Connection between rails at each array



Roof / Grounding Connection between rails at each array



Roof / Grounding Connection between rails at each array





Roof / Duct seal in soladeck



Roof / Soladeck showing all wiring connections



Roof / Soladeck with Lid On





Roof / Roof Wiring at Rail



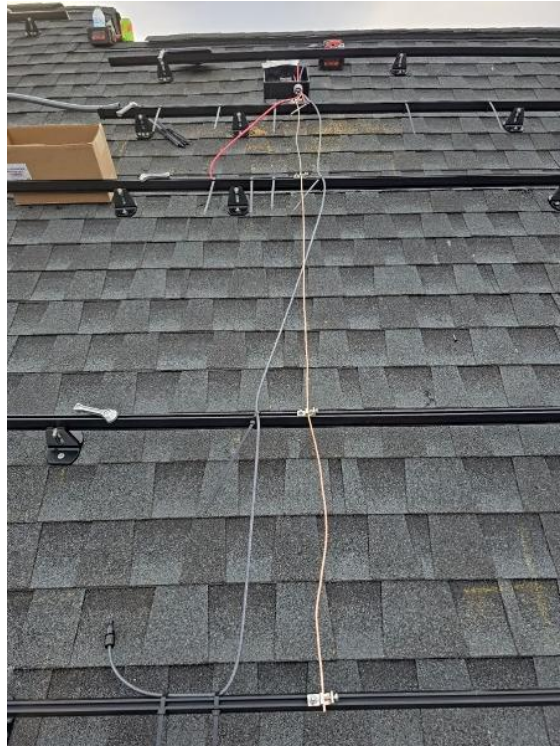
Roof / Roof Wiring at Rail



Roof / Roof Wiring at Rail



Roof / Wire Runs on roof



Roof / Wire Runs on roof



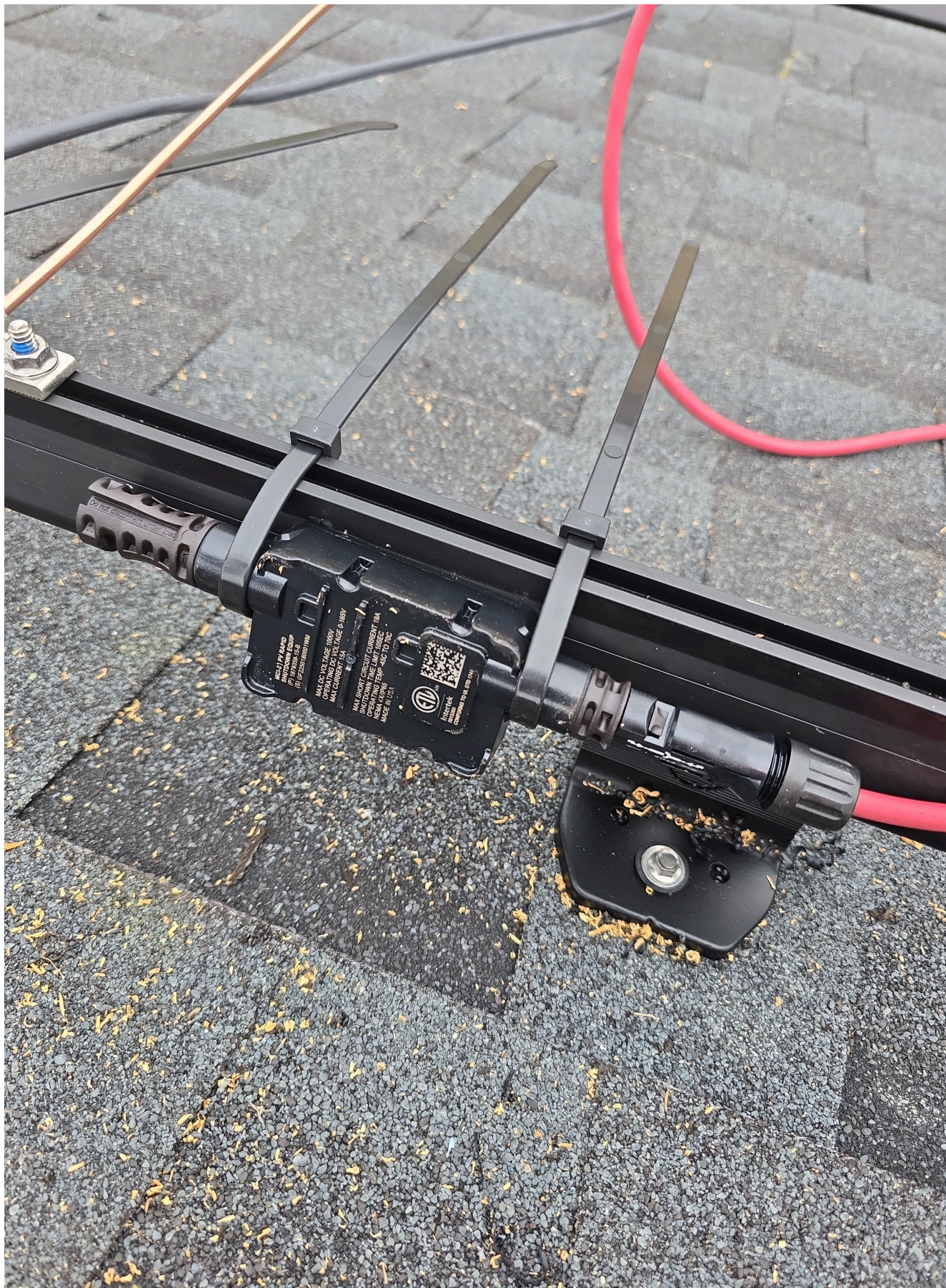
Roof / Wire Runs on roof



Roof / Wire Runs on roof







Roof / Rapid Shut Downs - Roof run



Roof / Rapid Shut Downs - Roof run



Roof / Rapid Shut Downs - Roof run



Roof / Rapid Shut Downs - Roof run



Roof / Rapid Shut Downs - Roof run



Roof / Rapid Shut Downs - Roof run



Roof / Rapid Shut Downs - Roof run



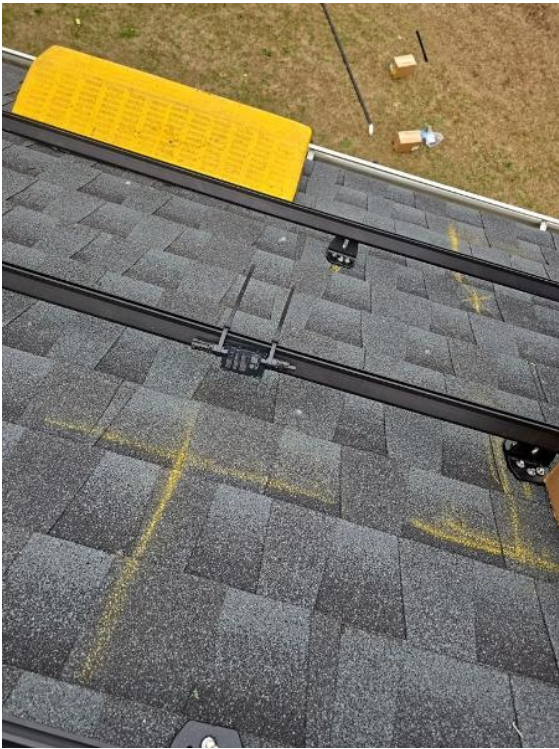
Roof / Rapid Shut Downs - Roof run



Roof / Rapid Shut Downs - Roof run



Roof / Rapid Shut Downs - Roof run



Roof / Mids - Installed (Up close)









