



Install

66 Pecan Grv Ln Fuquay-Varina, NC 27526

Project Information

| | | |
|----------------------------|---|--|
| Work Type | Install | Customer/Homeowner Email |
| Property Address | 66 Pecan Grv Ln Fuquay-Varina, NC 27526 | Was Rejected? For LightReach use only |
| Permitted City, State, Zip | | If yes, provide details |
| Customer/Homeowner Name | Chong Ting | Rejected Details Reviewed and Accepted |
| Customer/Homeowner Phone | | |

Site Info

| | |
|------------------------------|----|
| Is this a Manufactured home? | No |
|------------------------------|----|

Pre-Existing Damage & Conditions

Click the button below to add a Pre-Existing Damage or Condition

Any pre-existing damage or conditions should also be documented, such as broken vent boot flashing, chimney cracks or leaks, altered satellite dishes, gutters, torn or missing shingles, shingle cap damage, and generally anything that could potentially be a workmanship liability in the project work area.

Documentation helps reduce unnecessary service evaluations

Roof Photos

Array

| Array # |
|---------|
| 1 |

Electrical photos

Inverter

Inverter or IQ Combiner #

Component Identification

Pre-Construction Work

Additional Mounting Systems

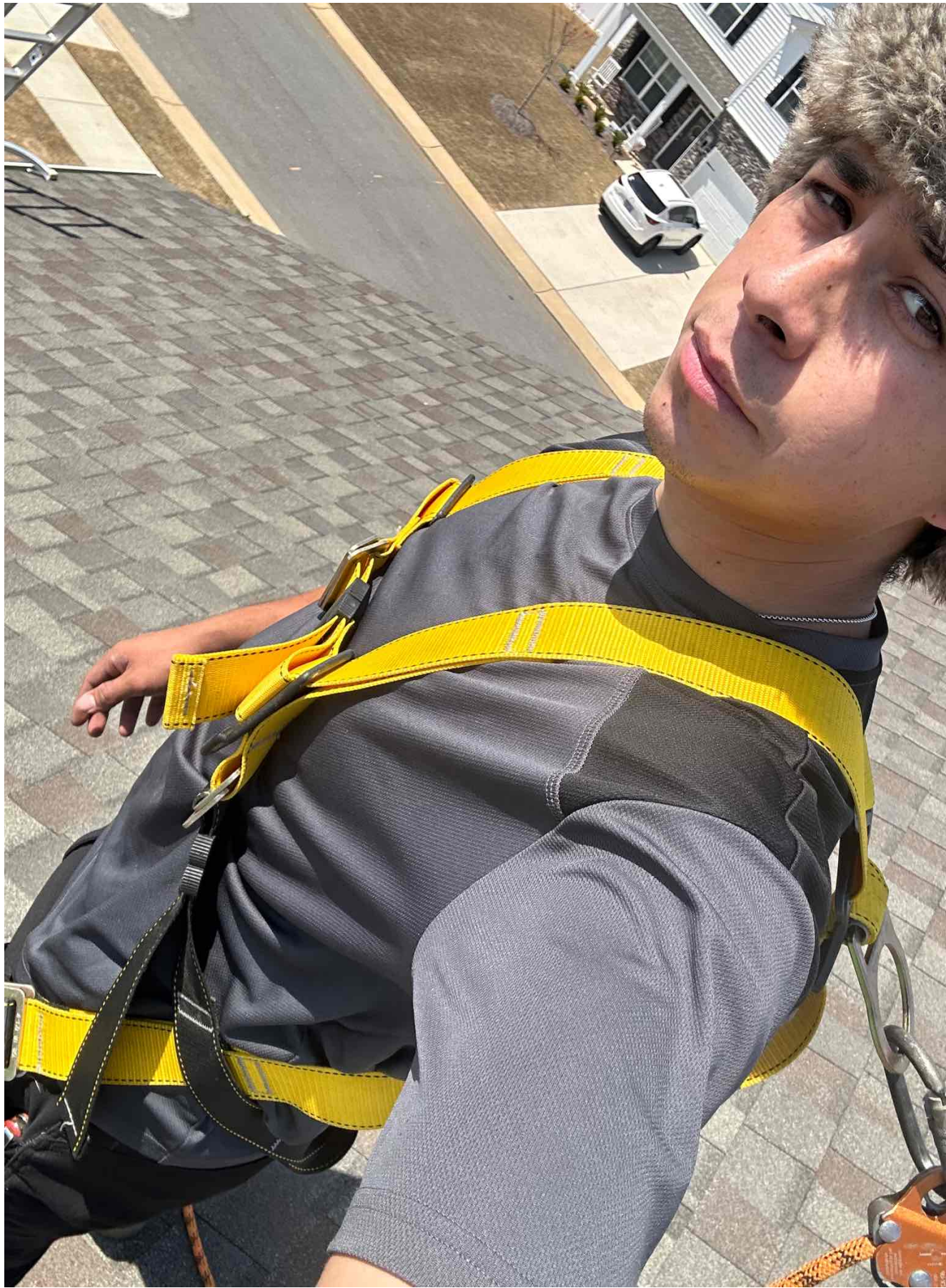
Batteries

Commissioning

Revisit/Corrections



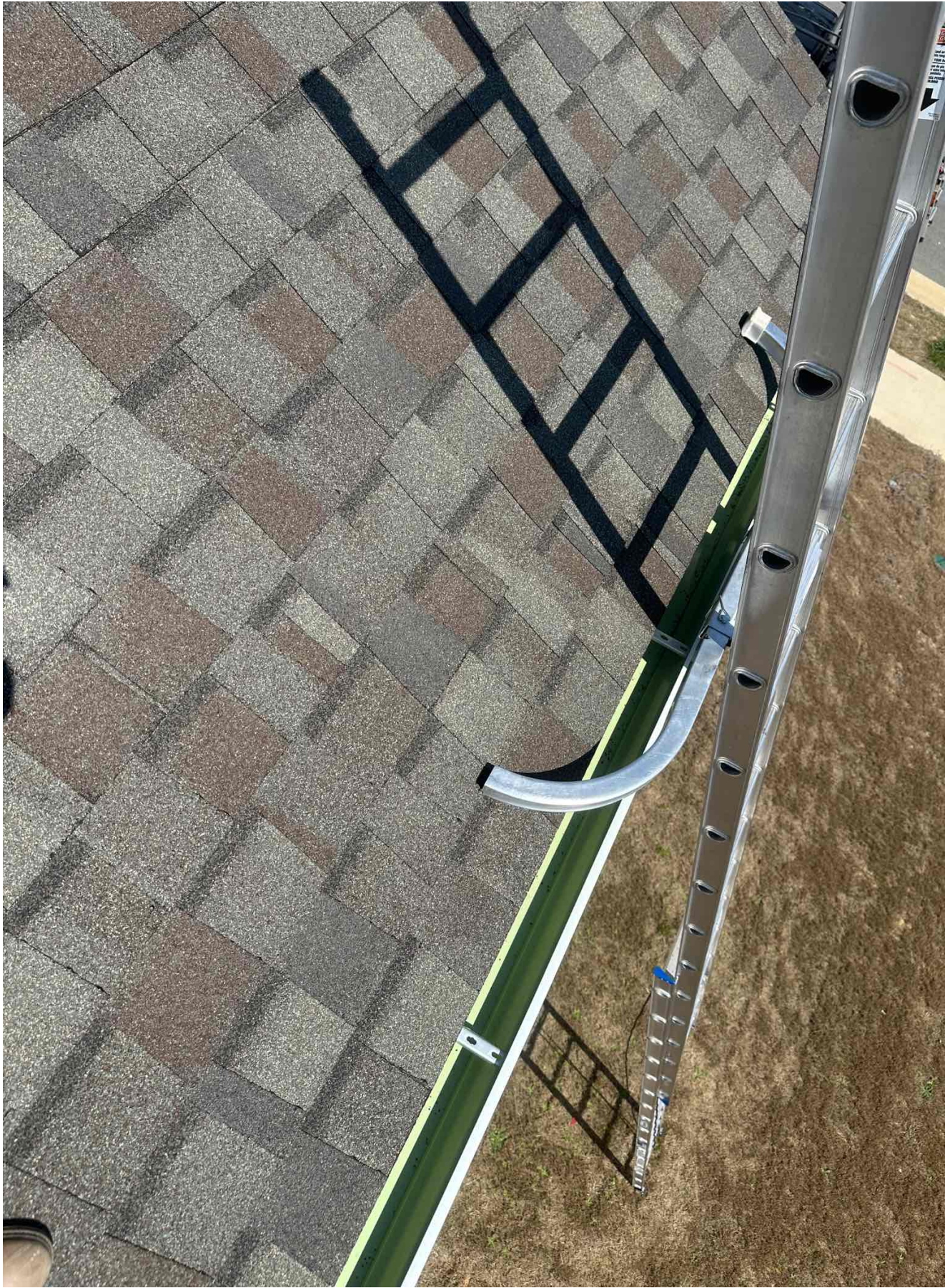
Internal Installers



Internal Installers



Internal Installers



Internal Installers



Internal Installers



Internal Installers



Internal Installers



Internal Installers



Internal Installers



Internal Installers



Internal Installers



Internal Installers



Internal Installers



Internal Installers



Internal Installers



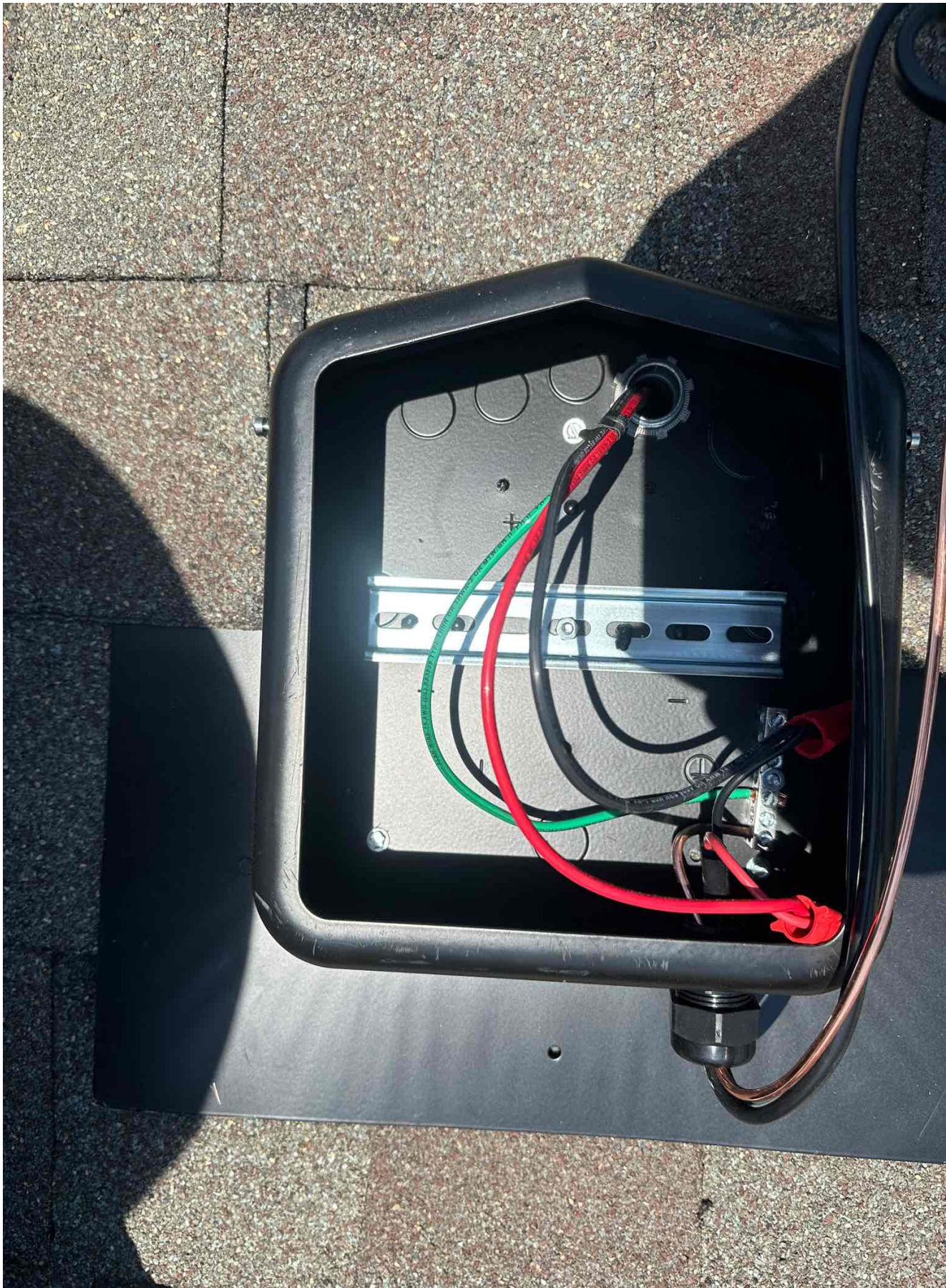
Internal Installers



Internal Installers



Internal Installers



Internal Installers

IQ Combiner LED & buttons quick reference guide

Enphase Installer Platform (EIP) communication LED

- Green when connected to Enphase's EIP cloud.
- Flashing green when connecting to EIP or WiFi router.
- Red when connected to local network only i.e., no internet.
- Off if no network is available.

AP mode LED

- Green when AP mode is enabled, and IQ Gateway Wi-Fi network is available.
- Off when AP mode is disabled.
- Off by default unless installer is using AP mode.

AP mode button

Only used by installer during installation or to configure the system.

Starts IQ Gateway's wireless Access Point (AP) to connect mobile phone directly.

Power production LED

- Green light when all microinverters are producing power.
- Flashing green when an upgrade of the microinverters is in progress.
- Red if one or more microinverters stop producing power.
- Flashing red when microinverters are not yet detected.
- Off if all the microinverters stop producing or communicating.
- Usually red at dawn/dusk, off at night & flashing red after IQ Gateway restarts.

Device communication LED

- Flashing green when IQ Gateway is scanning for microinverters.
- Green when all provisioned microinverters are communicating with IQ Gateway.
- Red if one or more microinverters are not communicating with IQ Gateway.
- Off if all microinverters are not communicating with IQ Gateway.
- Usually red during dawn/dusk and off at night.

Device scan button

Only used by installer during installation or to configure the system.

Starts/stop a 15-minute scan for devices over the power line.

All LEDs

- Flashing green when software upgrade is in progress.
- Flashing red when IQ Gateway is booting up.

On Power Up, LEDs can take up to 30 seconds to glow. While booting, wait for 2 minutes after powering off the IQ Gateway, before powering it back on.

GRID-TIED SYSTEMS

RECOMMENDED ROUTING FOR ETHERNET CABLE

- CT on IQ Battery L2
- CT on consumption L2
- CT on consumption L1
- CT on PV L1

Jumper

CTRL Board

CT 1 2 3 NA
CT 2 1 2 3 NA
CT 3 1 2

TO PV **TO MAIN LOAD CENTER**

ENPHASE.

IQ Combiner 5

Photovoltaic Combiner Box

X-IQ-AM1-240-5-HDK

Electrical ratings

Voltage 240V ~, 60Hz

DG Breakers 80A MAX (combined)

DG Inputs 64A MAX (combined)

Output 65A MAX, 90A MAX feeder OCPD

Temperature 46°C MAX ambient

UL CERTIFIED

EMC166

Scan for QIG

NOM

FC

IQ GATEWAY CONTAINS FCC ID: W52-W0780BVG IC ID: 10462A-W0780BVG

CTRL BOARD CONTAINS FCC ID: W52-W0780BVG IC ID: 10462A-W0780BVG

202449018246

P/N: 883-02025 17

Dedicated solar and DG Combiner Box - do not add loads

10 AMP or 15 AMP IQ Gateway Breaker not used for backfeed

| Connection | Wire sizes | Torque |
|----------------------------|------------|---------------------|
| DG Breaker (1, 2, 3, 4) | 14-10 AWG | 2.2 Nm (20 lb-in) |
| | 8 AWG | 2.8 Nm (25 lb-in) |
| | 6-4 AWG | 3.0 Nm (27 lb-in) |
| 60A Circuit Breaker only | 4-1/0 AWG | 5.0 Nm (45 lb-in) |
| IQ Gateway Breaker (5) | 14-10 AWG | 2.2 Nm (20 lb-in) |
| IQ Gateway Power Terminals | 14-10 AWG | 1.4 Nm (12.4 lb-in) |
| Neutral and ground | 2-1/0 AWG | 5.6 Nm (50 lb-in) |
| | 14-9 AWG | 5.1 Nm (45 lb-in) |
| | 6 AWG | 3.6 Nm (32 lb-in) |
| | 9 AWG | 2.6 Nm (23 lb-in) |
| | 10-14 AWG | 2.3 Nm (20 lb-in) |
| Main lug | 10-4 AWG | 5.0 Nm (45 lb-in) |
| | 3-2/0 AWG | 5.6 Nm (50 lb-in) |
| CTRL Connectors | 18 AWG | 0.2 Nm (1.77 lb-in) |
| | 18 AWG | 0.2 Nm (1.77 lb-in) |

Copper conductors only, rated min. 75°C. Follow NFPA 70 (NEC), or CSA C22.1 part 1, and all local codes. For DG Breakers larger than 20A, use wire insulated for 90°C based on 75°C ampacity.

Designed in California and India. Made in Mexico

GRID-FORMING SYSTEMS

RECOMMENDED ROUTING FOR ETHERNET CABLE

- CT on IQ Battery L2
- CT on consumption L2
- CT on consumption L1
- CT on PV L1

Jumper

CTRL Board

CT 1 2 3 NA
CT 2 1 2 3 NA
CT 3 1 2

TO PV **TO MAIN LOAD CENTER/ IQ SYSTEM CONTROLLER/ IQ BATTERY SP**

WARNING: For Grid-Forming Systems, IQ Gateway must be powered from IQ Combiner's Breaker. For Grid-Forming Systems, IQ Gateway must be powered from IQ System controller.

Non terminating node : CTRL(CONTROL) Wiring

When IQ System Controller 3/30 and IQ Battery SP are on both sides of IQ Combiner and both CTRL terminals are used.

CTRL L (BLUE)
CTRL H (ORANGE)
CTRL G (BLACK)
NA
DRAIN

CTRL L (BLUE)
CTRL H (ORANGE)
CTRL G (BLACK)
NA
DRAIN

WARNING: WIRE THE DRAIN ONLY ON ONE END OF THE CONTROL CABLE.

Terminating node : CTRL(CONTROL) Wiring

When IQ System Controller 3/30 and IQ Battery SP are on only one side of IQ Combiner and only one CTRL terminal is used.

CTRL L (BLUE)
CTRL H (ORANGE)
CTRL G (BLACK)
NA
DRAIN

WARNING: WIRE THE DRAIN ONLY ON ONE END OF THE CONTROL CABLE.

CTRL Board

CT 1 2 3 NA
CT 2 1 2 3 NA
CT 3 1 2

CTRL Wiring

CTRL L (BLUE)
CTRL H (ORANGE)
CTRL G (BLACK)
NA
DRAIN

Strip Length

5/16"

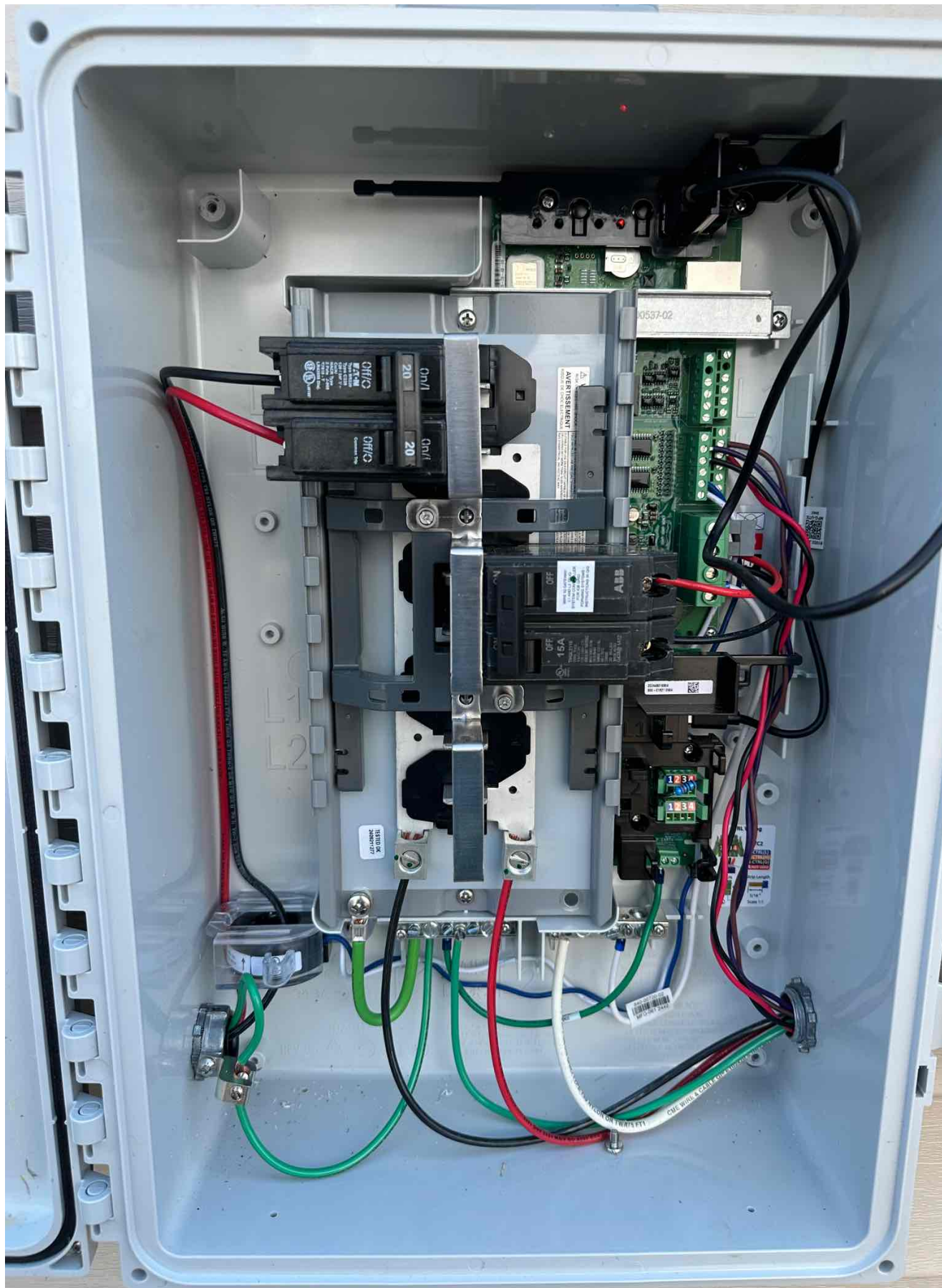
Scale 1:1



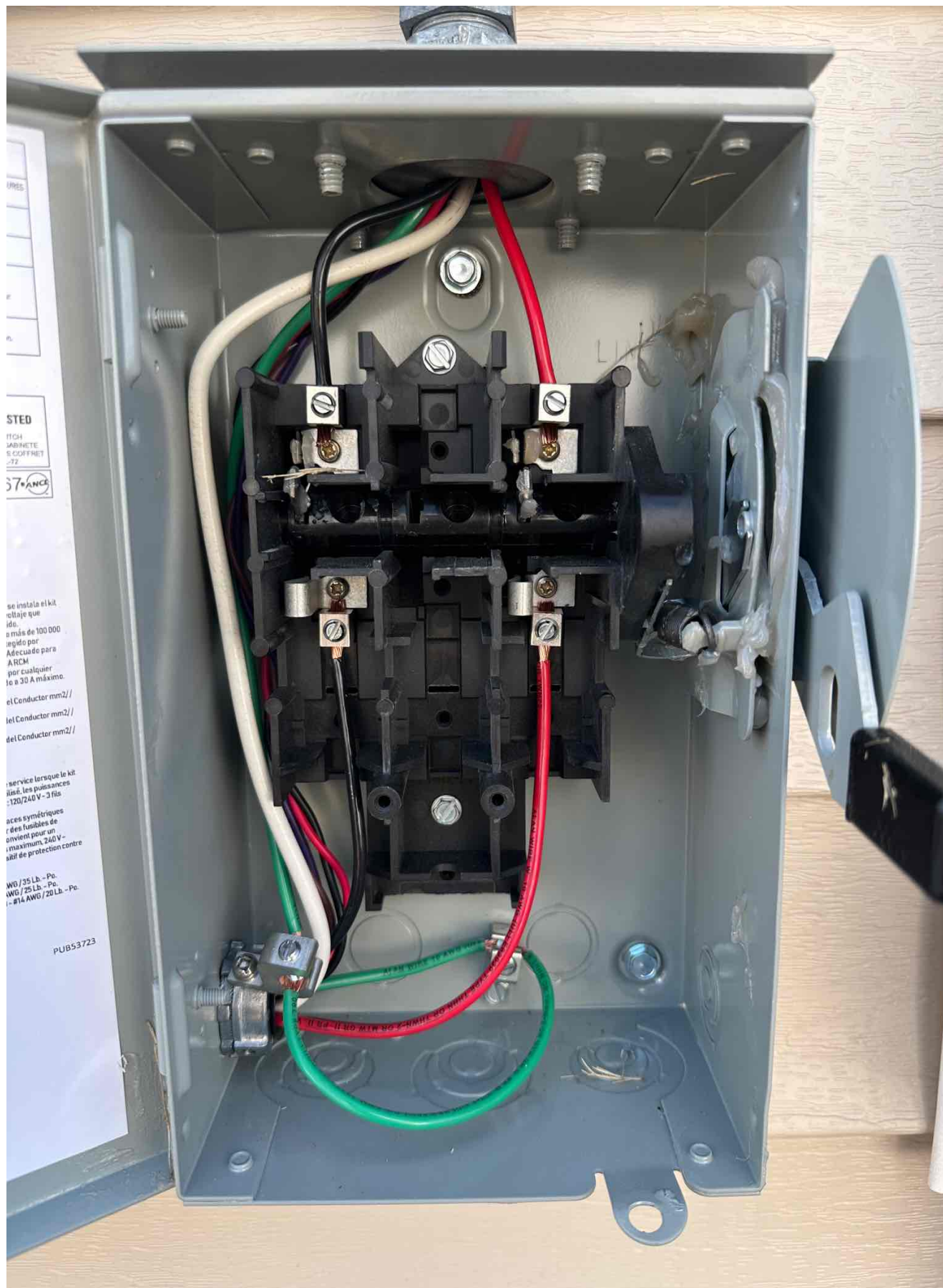
Internal Installers



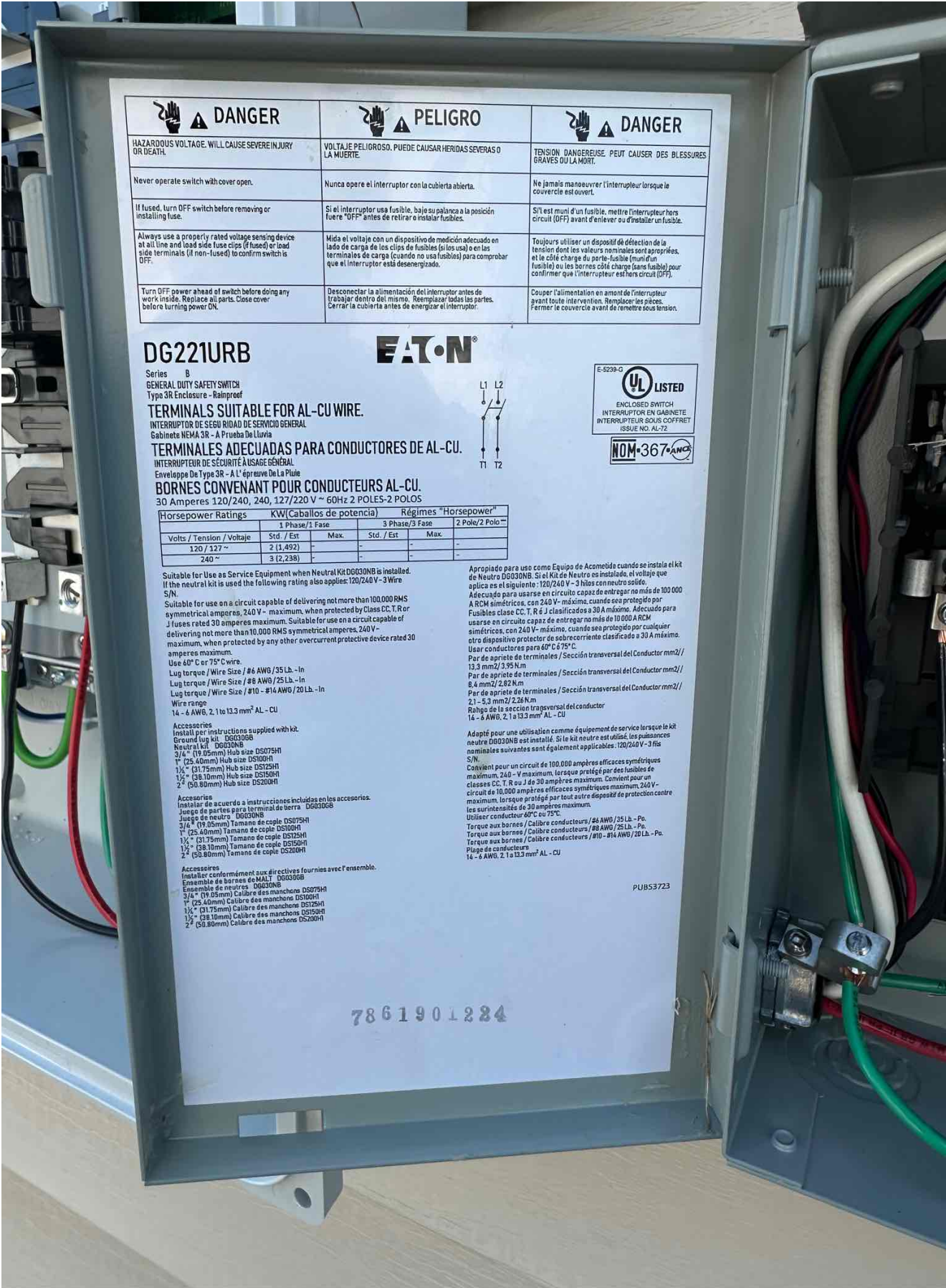
Internal Installers



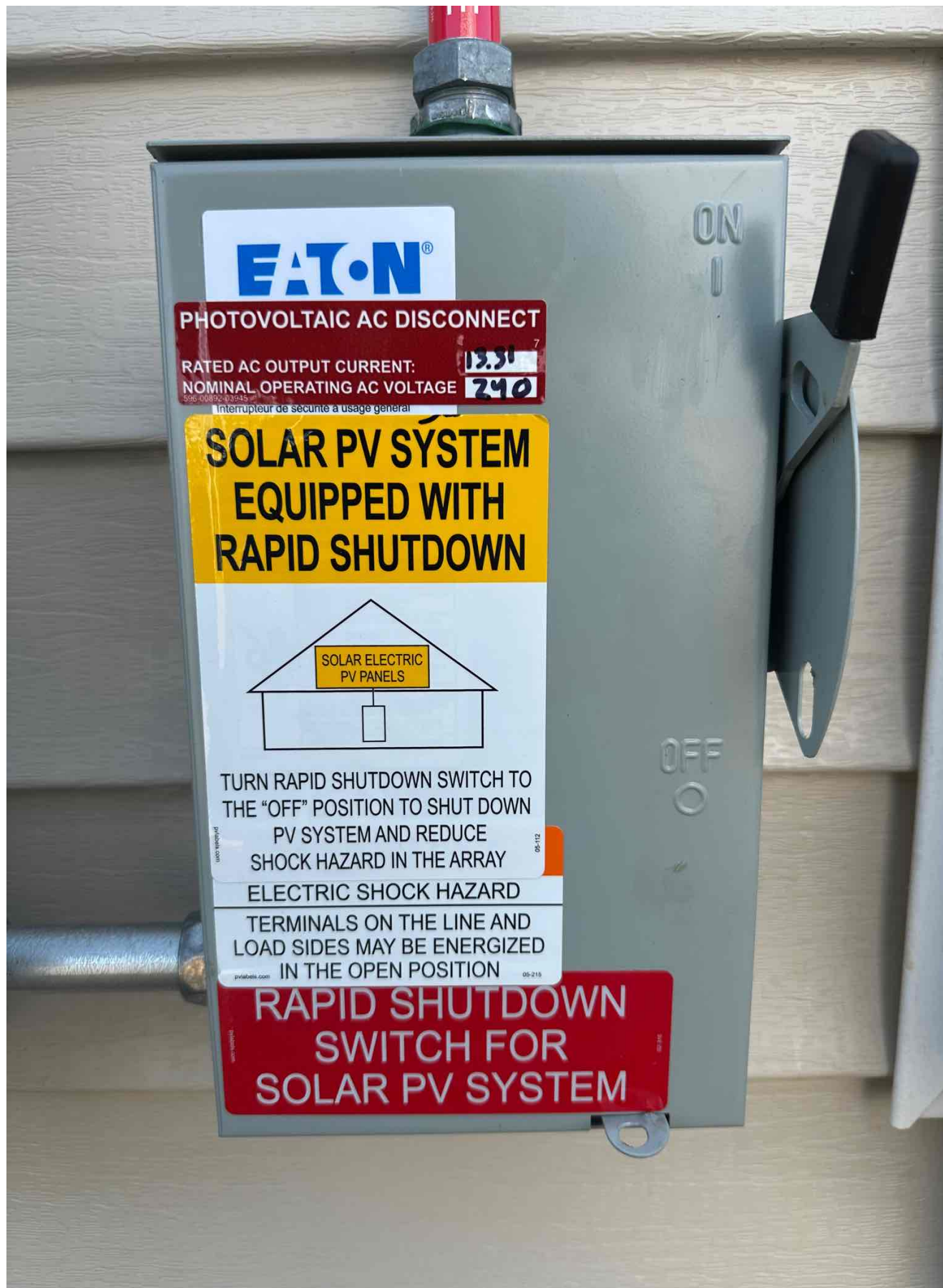
Internal Installers



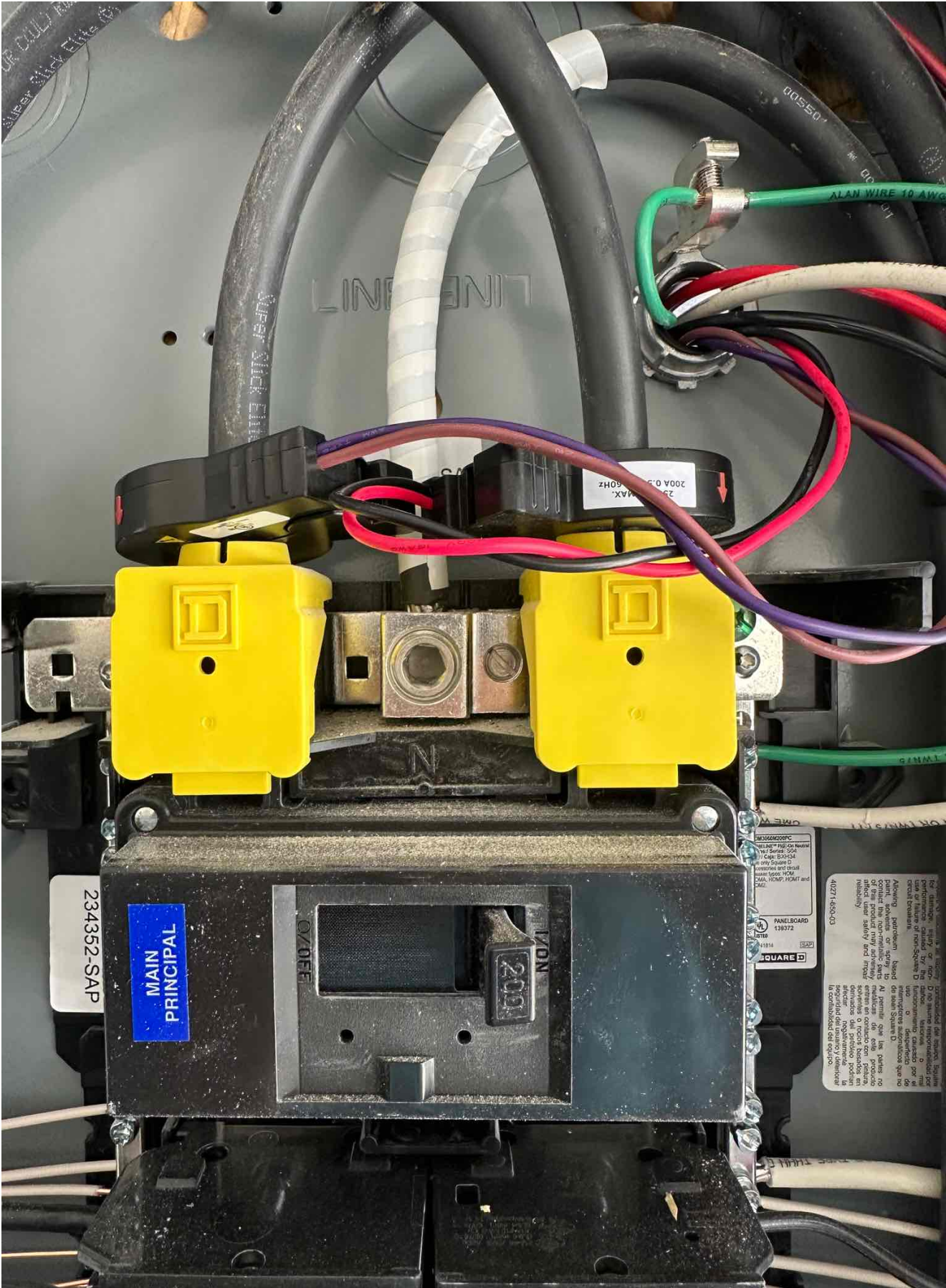
Internal Installers



Internal Installers



Internal Installers



Internal Installers

