

W. Mauldin, certify that this map was drawn under revision from an actual survey made under my supervision, ratio of precision as calculated by latitudes and longitude is 1/10,000+, that the boundaries not surveyed are broken lines plotted from information in book SEF 1E, that this map was prepared in accordance with G.S. 170-30 as amended.

By hand and seal this 15 day of Oct. 2019.

James W. Mauldin

Number L-3247



James W. Mauldin, Professional Land Surveyor No. L-3247, Certify to one or more of the following as indicated thus:
 this plot is of a survey that creates a subdivision of land within the limits of a county or municipality that has an ordinance that regulates parcels of land;
 this plot is of a survey that is located in such portion of a county or municipality that is unregulated as to an ordinance that regulates parcels of land;
 this plot is of a survey of an existing parcel or parcels of land;
 this plot is of a survey of another category, such as the recombination of existing parcels, a court-order survey or other exception to the definition of a subdivision.

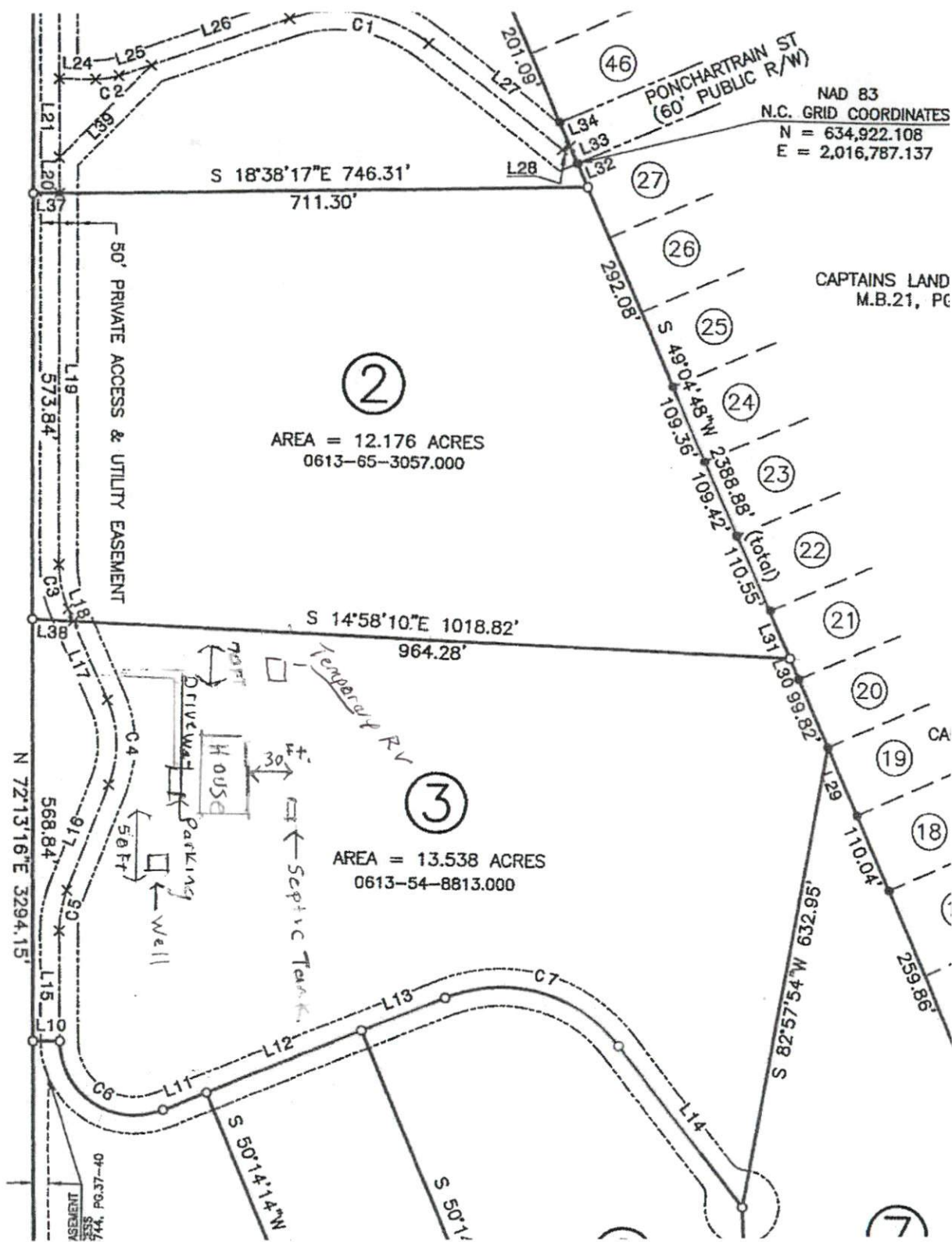
The information available to this surveyor is such that I am unable to make a determination to the best of my professional ability as to whether the parcels contained in (a) through (d) above:

James W. Mauldin

James W. Mauldin, Professional Land Surveyor No. L-3247

TC AND I TIMBER
 COMPANY LLC
 D.B.2297, PG.713

Radius	Length	Chord	Chord Bear.
200.00'	197.74'	189.79'	N 07°56'36" W
100.00'	32.27'	32.13'	N 27°01'24" W
150.00'	61.05'	60.63'	S 60°33'41" W
150.00'	117.41'	114.43'	S 71°19'30" W
150.00'	56.36'	56.03'	S 82°59'04" W
100.00'	195.45'	165.79'	S 16°13'45" W
200.00'	261.23'	243.06'	S 02°00'40" E



NAD 83
 N.C. GRID COORDINATES
 N = 634,922.108
 E = 2,016,787.137

CAPTAINS LAND
 M.B.21, PG

AREA = 12.176 ACRES
 0613-65-3057.000

AREA = 13.538 ACRES
 0613-54-8813.000