













PHOTOVOLTAIC POWER SOURCE

EZA
SOLAR

31x425

PHOTOVOLTAIC ROOF MOUNT SYSTEM

85 MODULES-ROOF MOUNTED - 12.870 KW DC, 10.000 KW AC
14 RINGNECK CT, LILLINGTON, NC 27546

13.175 DC

TOP TIER
SOLAR SOLUTIONS

GENERAL NOTES

VICINITY MAP
14 Ringneck Ct,
Lillington, NC 27546
United States

HOUSE PHOTO

OWNER REFERENCES

OWNER INFORMATION
JAMES TANNER
RESIDENCE
14 RINGNECK CT,
LILLINGTON, NC 27546

COVER SHEET
PAGE 1

SIGNATURE





PHOTOVOLTAIC POWER SOURCE

PHOTOVOLTAIC POWER SOURCE





PHOTOVOLTAIC POWER SOURCE

PHOTOVOLTAIC POWER SOURCE



№ 0228053

701









WARNING ELECTRIC SHOCK HAZARD. THE DC CONDUCTORS OF THIS PHOTOVOLTAIC SYSTEM ARE UNGROUNDING AND MAY BE ENERGIZED.

AVERTISSEMENT

RISQUE DE CHOC ELECTRIQUE: QUAND LE CHAMP PHOTOVOLTAIQUE EST EXPOSE A LA LUMIERE, UNE TENSION CC EST FOURNIE A CET EQUIPEMENT. SURFACES CHAUDES, NE PAS TOUCHER, AFIN DE REDUIRE LES RISQUES DE BRULURES LE CONTACT DE RETOUR INJECTE PAR LE CONVERTISSEUR EN CAS DE DEFAILLANCE DANS LE MODULE PV EST TOUJOURS NUL.

CAUTION

HOT SURFACES TO REDUCE THE RISK OF BURNS DO NOT TOUCH. PHOTOVOLTAIC ARRAY IS EXPOSED TO LIGHT. IT SUPPLIES A DC VOLTAGE TO EQUIPMENT. COVER PV MODULE WITH EQUIPMENT BEFORE CONNECTING THIS OPTIMIZER. DURING FAULT, ZERO CURRENT IS SOURCED INTO DC ARRAY BY CONVERTER.

SolarEdge Technologies Ltd
Power Optimizer
SolarEdge Technologies GmbH/
Werner-Eckert-Strasse 6/81829
Munich/Germany

Do Not Remove 1883C752-04

SolarEdge Technologies Ltd
Werner-Eckert-Strasse 6/81829 Munich/Germany

FC





WARNING: ...
ADVERTISMENT: ...
MADE IN CHINA

OUT

STRONG

440W/5-60V/15A
8-60V/14.5A

1V
NA03 ST2623-01883C752-B4
Israel S440-1GM4MRM

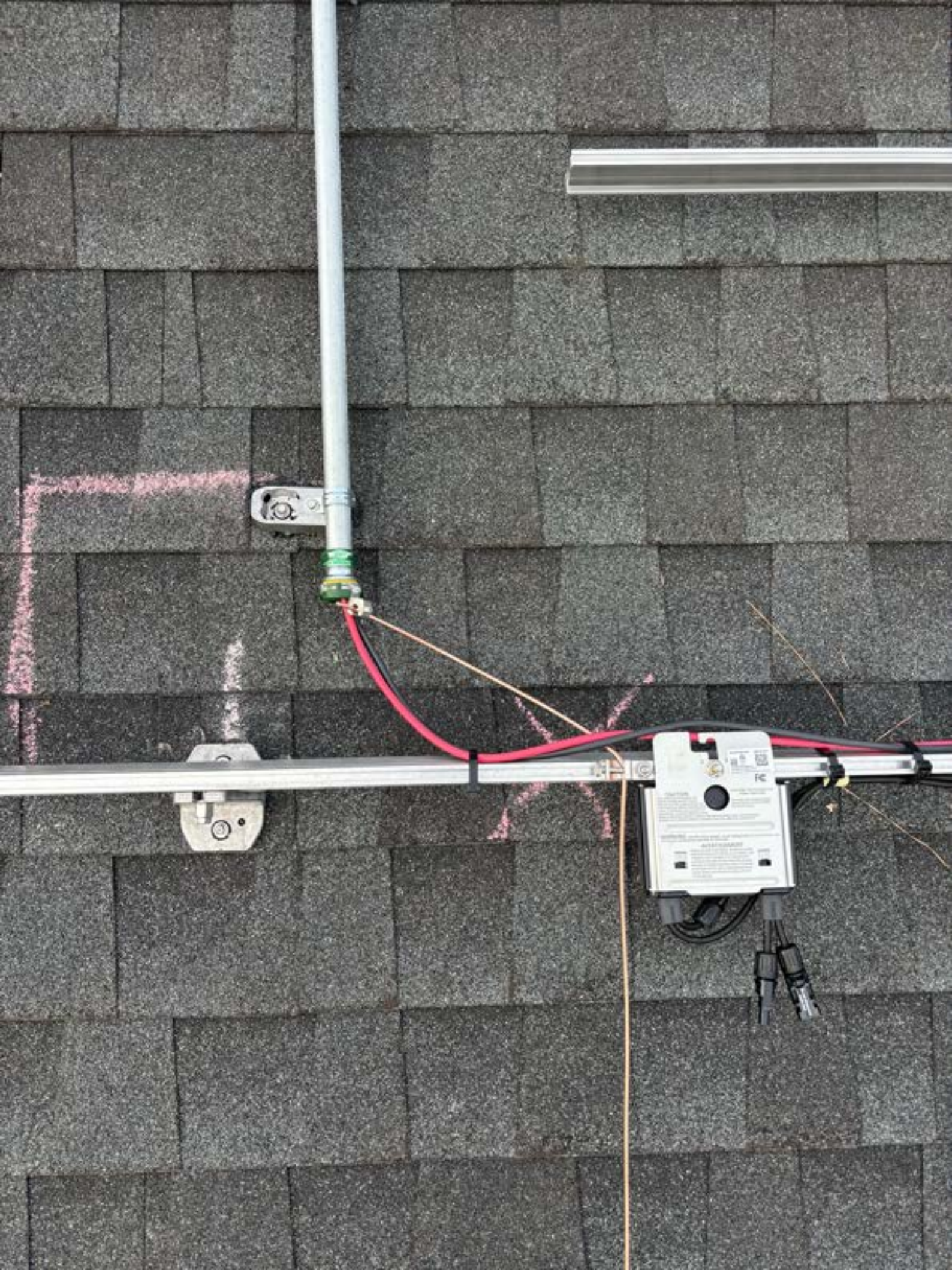


STRONG

440W

VV





















20

Label on the motorized base of the tracking system, containing technical specifications and a QR code.





25







23

WARNING: This equipment is not to be used for medical purposes. It is not to be used for medical diagnosis, treatment, or monitoring. It is not to be used for medical research. It is not to be used for medical education. It is not to be used for medical training. It is not to be used for medical certification. It is not to be used for medical accreditation. It is not to be used for medical licensure. It is not to be used for medical registration. It is not to be used for medical certification. It is not to be used for medical accreditation. It is not to be used for medical licensure. It is not to be used for medical registration.

DISPOSAL INSTRUCTIONS

1. Do not dispose of this equipment in a fire. It may contain hazardous materials.

2. Do not dispose of this equipment in a landfill. It may contain hazardous materials.

3. Do not dispose of this equipment in a body of water. It may contain hazardous materials.

4. Do not dispose of this equipment in a recycling bin. It may contain hazardous materials.

5. Do not dispose of this equipment in a regular trash bin. It may contain hazardous materials.

6. Do not dispose of this equipment in a regular trash bin. It may contain hazardous materials.

7. Do not dispose of this equipment in a regular trash bin. It may contain hazardous materials.

8. Do not dispose of this equipment in a regular trash bin. It may contain hazardous materials.

9. Do not dispose of this equipment in a regular trash bin. It may contain hazardous materials.

10. Do not dispose of this equipment in a regular trash bin. It may contain hazardous materials.













22

COMCAST
SERIAL NUMBER
QR CODE



50













2







29

© 2012 SunPower Corporation





100% HALOGEN FREE LOW SMOKE

Do Not Remove

FC

CAUTION
Do not touch the solar panel or the solar panel connectors of the optimizer. The optimizer is a high-voltage device. Touching the optimizer or the solar panel connectors may cause electric shock or fire. Do not touch the optimizer or the solar panel connectors when the optimizer is connected to the solar panel.

WARNING
Do not touch the solar panel or the solar panel connectors of the optimizer. The optimizer is a high-voltage device. Touching the optimizer or the solar panel connectors may cause electric shock or fire. Do not touch the optimizer or the solar panel connectors when the optimizer is connected to the solar panel.

AVERTISSEMENT
Ne touchez pas les panneaux solaires ou les connecteurs des optimiseurs. Les optimiseurs sont des dispositifs à haute tension. Toucher les optimiseurs ou les connecteurs des panneaux solaires peut provoquer des électrocutions ou des incendies. Ne touchez pas les optimiseurs ou les connecteurs des panneaux solaires lorsque les optimiseurs sont connectés aux panneaux solaires.

10



CAUTION
NOT TO BE USED TO RECEIVE THE
SIGNAL FROM THE SATELLITE
RECEIVER. THE SIGNAL FROM THE
SATELLITE IS EXTREMELY POWERFUL
AND CAN BE HARMFUL TO THE EYES
IF VIEWED DIRECTLY. ALWAYS USE
PROPER SAFETY PRECAUTIONS.
SEE USER MANUAL FOR MORE
DETAILS.

WARNING
ACTIVE DATA CHANNEL. THE USE OF
THIS CHANNEL MAY BE LIMITED BY
CARRIER.

AVERTISSEMENT
NE PAS UTILISER CE DISQUE POUR
RECEVOIR LE SIGNAL DU SATELLITE.
LE SIGNAL DU SATELLITE EST
EXTRÊMEMENT PUISSANT ET PEUT
ÊTRE NUISIBLE AUX YEUX SI ON
LE REGARDE EN DIRECT. TOUJOURS
UTILISER LES PRÉCAUTIONS
APPRÉPRIÉES. VOIR LE MANUEL
D'UTILISATION POUR PLUS
DE DÉTAILS.



FC
Fiber Connect
1-800-451-4513
www.fiberconnect.com

FC
Fiber Connect
1-800-451-4513
www.fiberconnect.com

CAUTION
Do not touch the fiber optic cable or connector. The fiber optic cable and connector are sensitive to damage. Do not touch the fiber optic cable or connector. Do not touch the fiber optic cable or connector.

WARNING Do not touch the fiber optic cable or connector. The fiber optic cable and connector are sensitive to damage. Do not touch the fiber optic cable or connector.

AVERTISSEMENT

Ne touchez pas le câble ou le connecteur en fibre optique. Le câble et le connecteur en fibre optique sont sensibles aux dommages. Ne touchez pas le câble ou le connecteur en fibre optique. Ne touchez pas le câble ou le connecteur en fibre optique.

Do not disconnect
under load



QR code and identification text on the white tag.

Do not disconnect under load

13

57



CAUTION

WARNING

INSTALLATION

High Technology
Power Systems

High Technology
Power Systems

High Technology
Power Systems

High Technology
Power Systems

High Technology
Power Systems

High Technology
Power Systems

High Technology
Power Systems

High Technology
Power Systems

High Technology
Power Systems

High Technology
Power Systems

High Technology
Power Systems

High Technology
Power Systems

High Technology
Power Systems

High Technology
Power Systems

High Technology
Power Systems





14



Jinko Solar

Building Your Trust in Solar
Made in Vietnam

Jinko Solar Co., Ltd.
No. 1, Yingbin Road, Economic
Development Zone, Shanghai
City, 204100 Jiangxi, P.R. China
www.jinkosolar.com

JKM425N-54HL4-B



Maximum Power (Pmax)
Power Tolerance (±%)
Maximum Power Voltage (Vmp)
Maximum Power Current (Imp)
Open Circuit Voltage (Voc)
Short Circuit Current (Isc)
Maximum System Voltage
Maximum Open-circuit Voltage Rating
Power Factor
Frame Size Class
Fire Class
Weight
Dimension
S.C. 1000W/m², AM1.5, 25°C

S.T.C (Test side only)

475W
± 0.5%
37.17V
11.33A
38.92V ± 0%
11.58A ± 0%
1000VDC
25A
0 ~ + 0%
II

Type II 16517 30K class I (DC) 617 20
21.00kg
1722*1134*350mm

WARNING

ONLY qualified personnel should install or perform maintenance work on these modules.
BE AWARE of dangerous high DC voltage when connecting modules.
DO NOT damage or scratch the rear surface of the module.
DO module literature for appropriate mating connection.
DO NOT disconnect the cables or connections under load.

For Type, see installation instructions for installation requirements to achieve a specified system life class rating with this product.
For field connections, see IEC 60335-2-69. Co wire ends, insulated for a maximum of 90°C.

AVERTISSEMENT

SEUL les professionnels peuvent installer et effectuer les réparations.
PENDRE GARDE de la haute tension continue.
Ne pas endommager ou rayer la surface arrière du module.
Lire la littérature du module pour les connexions appropriées.
NE PAS déconnecter les câbles ou les connexions sous charge.

For Type, see installation instructions for installation requirements to achieve a specified system life class rating with this product.
For field connections, see IEC 60335-2-69. Co wire ends, insulated for a maximum of 90°C.









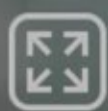


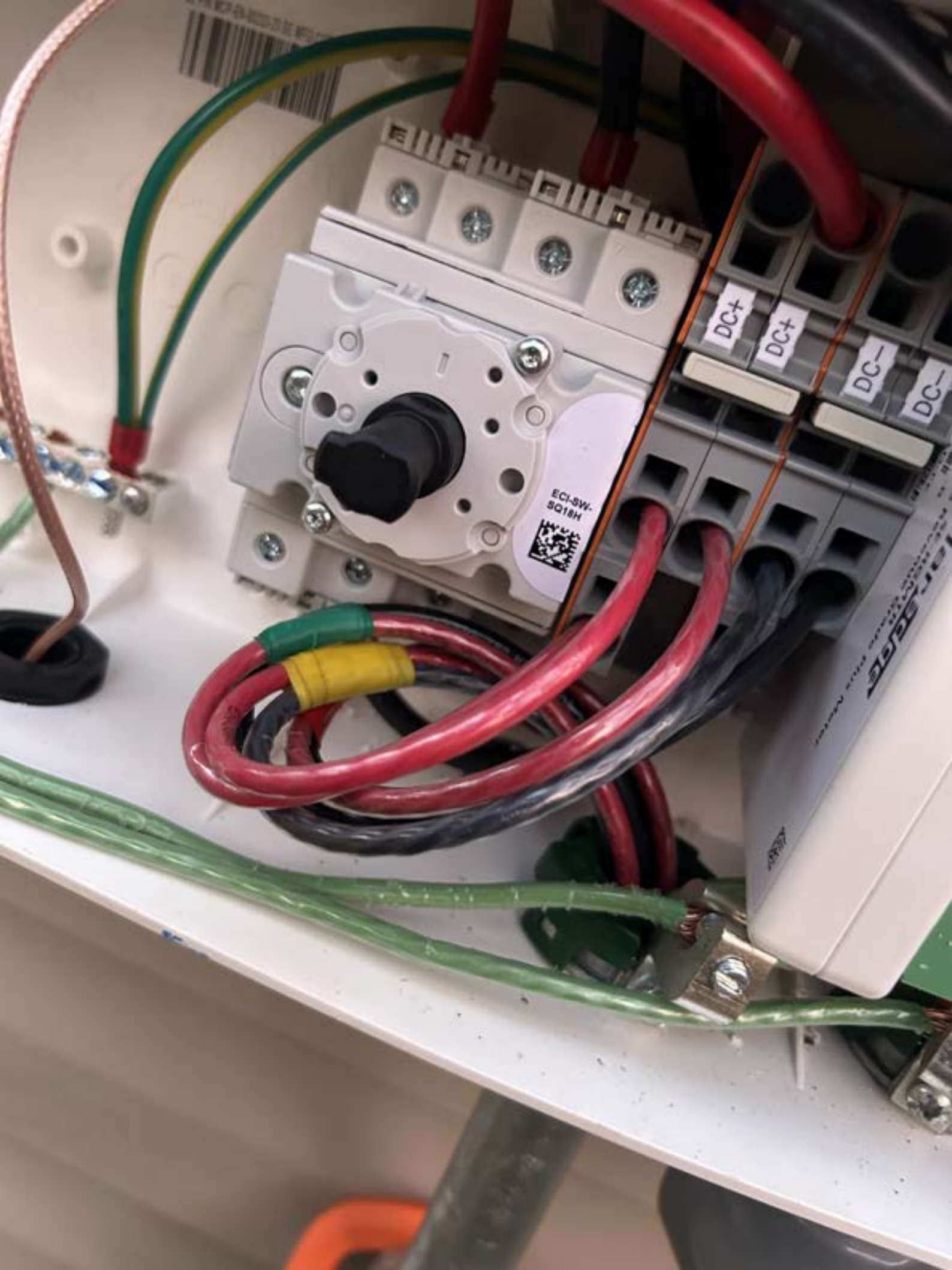


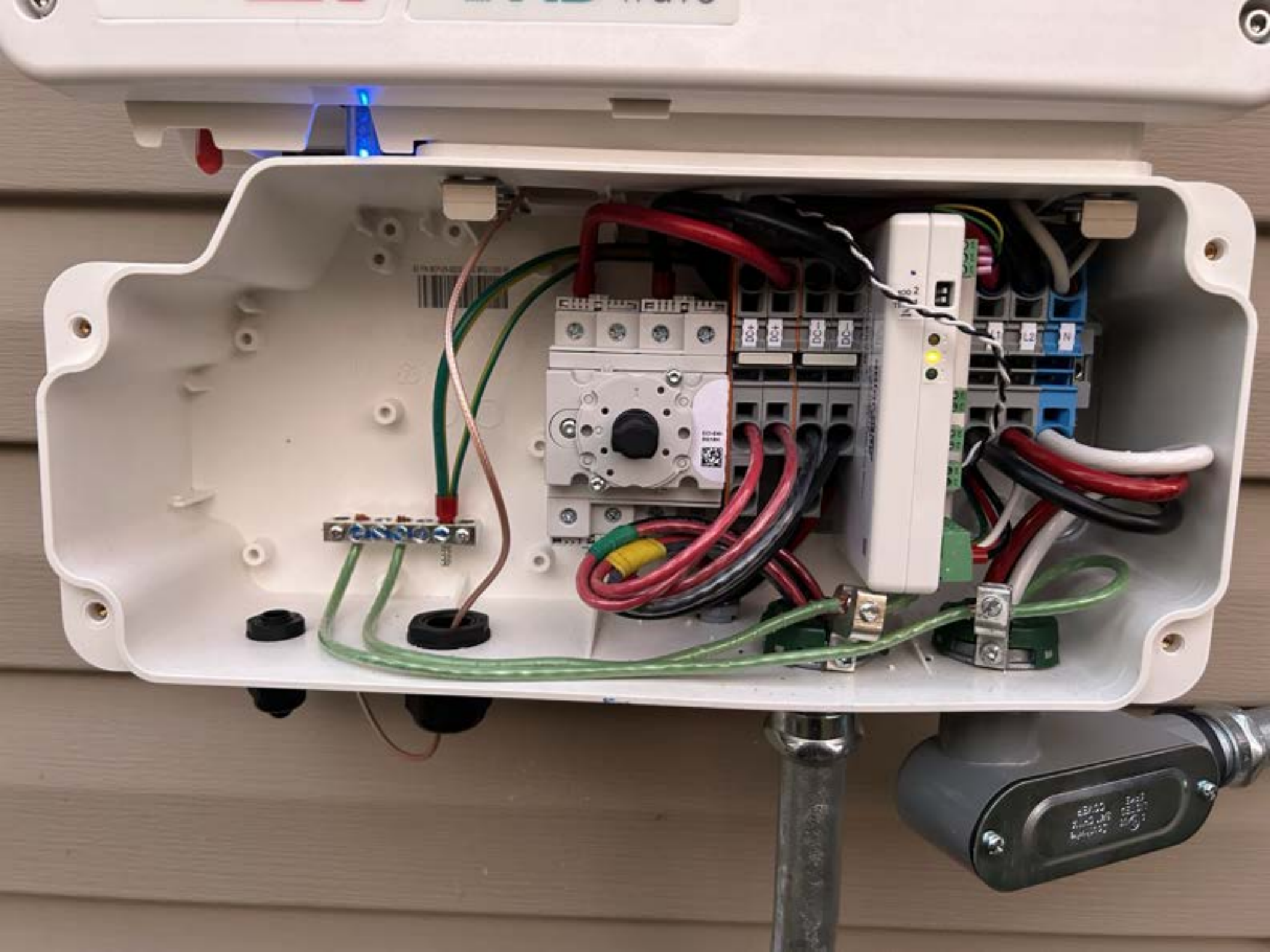
1/1



31/31







**KLEIN.
TOOLS**

CL800

°F

LoZ

←

Hz%

Ω

A~

V~

NCV

OFF

SEL

RANGE

MAX
MIN

ZERO

600A AC/DC Digital Clamp Meter

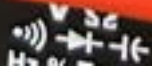
6000 Counts

10.15

**True RMS
TOUGH METER**

CAT III 1000V
CAT IV 600V

COM



**KLEIN.
TOOLS**

CL800

°F

LoZ

←

Hz %

Ω

A

V

NCV

OFF

SEL

RANGE

MAX
MIN

ZERO

600A AC/DC Digital Clamp Meter

6000 Counts

11.15
11.10

**True RMS
TOUGH METER**

CAT III 1000V
CAT IV 600V

COM

⚡

V Ω
Hz % Temp

**KLEIN
TOOLS**

CL800

°F

LoZ

Hz%

Ω

A~

V~



NCV

OFF

SEL

RANGE

MAX
MIN

ZERO

600A AC/DC Digital Clamp Meter
6000 Counts



**True RMS
TOUGH METER**

CAT III 1000V
CAT IV 600V

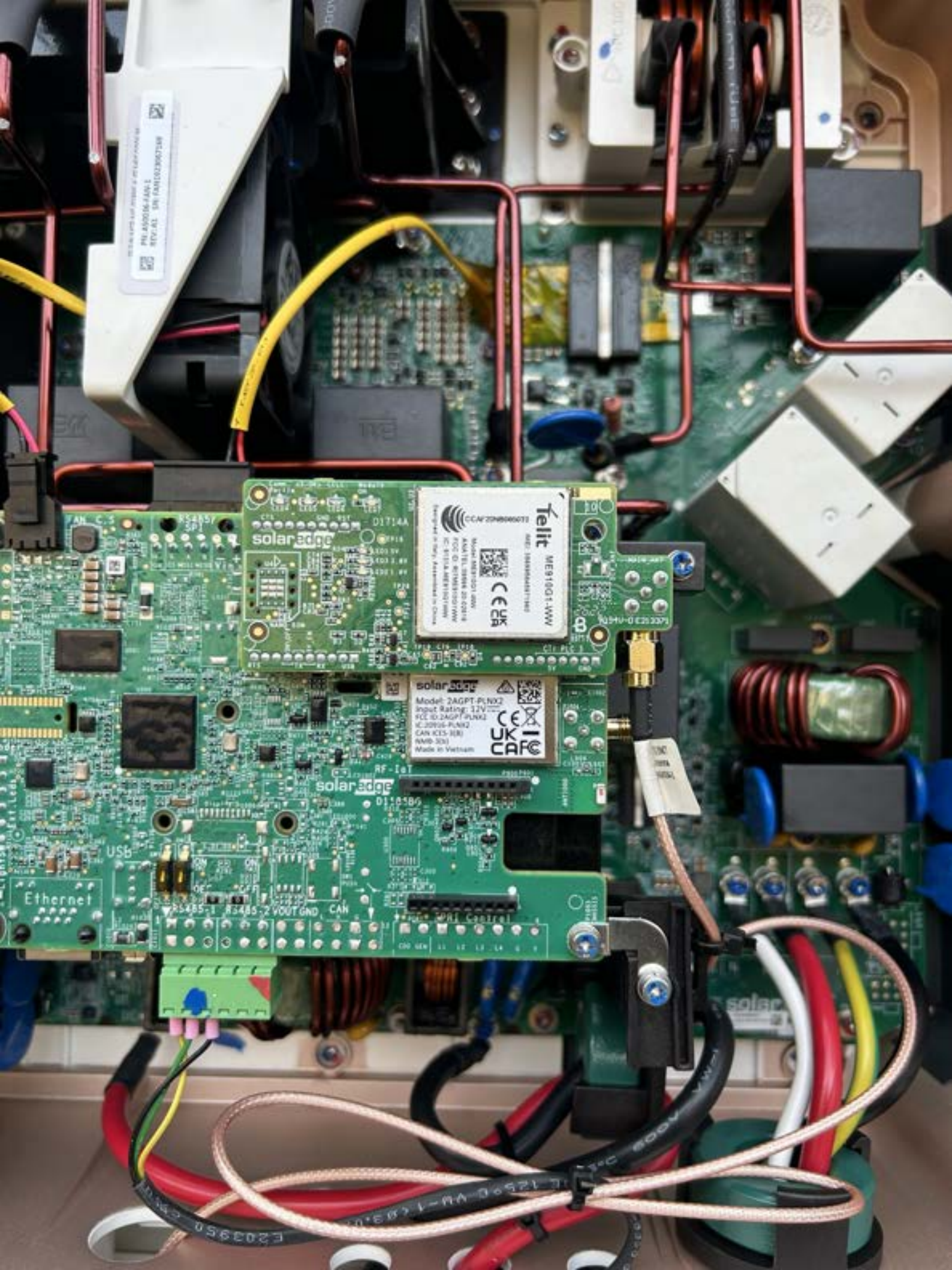
COM



V Ω

Hz % Temp





PV 4000/96/44AN-1
SOLAR EDGE FANDED200725W

solar edge
D1714A
Model: D1714A
Input Rating: 12V
CE UK CAFC

Teilt
ME910Q1-1WV
Model: ME910Q1-1WV
Input Rating: 12V
CE UK CAFC

solar edge
2AGPT-PLN02
Model: 2AGPT-PLN02
Input Rating: 12V
CE UK CAFC

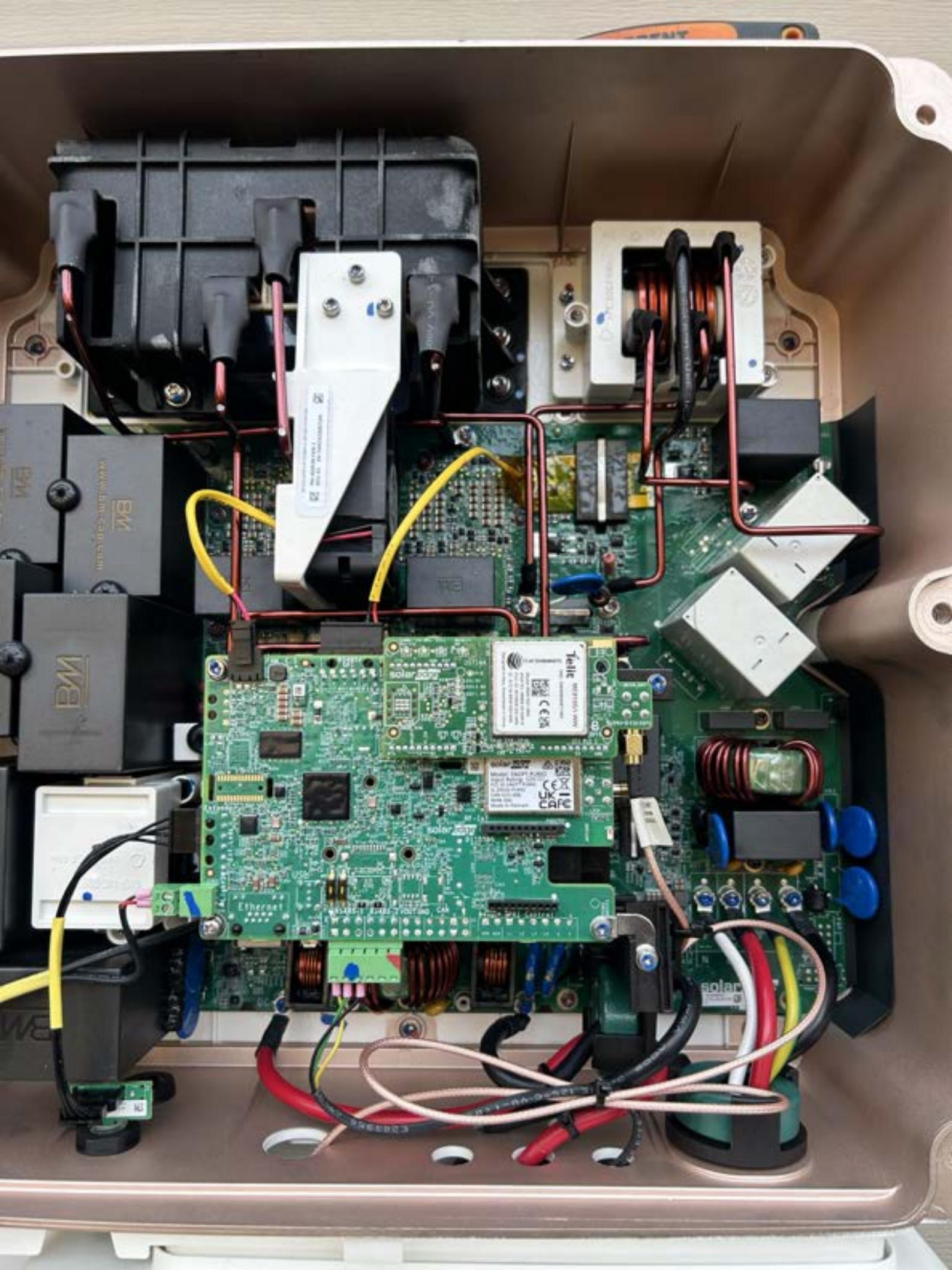
Ethernet

USB

CAN

SPI Control

E203950



3
5
7
9
11



SOLAR PV BREAKER
BREAKER IS BACKFED
DO NOT RELOCATE



HAZARD OF ELECTRIC SHOCK, EXPLOSION, OR ARC FLASH

DANGER / PELIGRO

PELIGRO DE DESCARGA ELÉCTRICA, EXPLOSION O DESTELLO POR ARQUEO

- Apply appropriate personal protective equipment (PPE) and follow safe electrical work practices. See NFPA 70E.
- This equipment must only be installed and serviced by qualified electrical personnel.
- Turn off all power supplying this equipment before working on or inside equipment.
- Always use a properly rated voltage sensing device to confirm power is off.
- Replace all devices, doors and covers before turning on power to this equipment.

- Utilice equipo de protección personal (EPP) apropiado y siga las prácticas de seguridad eléctrica establecidas por su Compañía (consulte la norma NFPA 70E).
- Solamente el personal eléctrico especializado deberá instalar y prestar servicio de mantenimiento a este equipo.
- Desenergice el equipo antes de realizar cualquier trabajo en él.
- Siempre utilice un dispositivo detector de tensión de valor nominal adecuado para confirmar la desenergización del equipo.
- Antes de energizar el equipo, vuelva a colocar todos los dispositivos, las puertas y los hornos.

Failure to follow these instructions will result in death or serious injury. 43273-709-02

El incumplimiento de estas precauciones podrá causar la muerte o lesiones serias.

621-01

005
80 3.7%
D. J. [Signature]

DIRECTORY / DIRECTORIO

Heat	Main
Heat	Main
AC	Booster Pump
AC	
SOLAR	
SOLAR	

SQUARE D COMPANY
400/1-471-01



SOLAR PV BREAKER
BREAKER IS BACKFED
DO NOT RELOCATE

Maintenance Mechanical, Inc.
412 Lark Branch Dr
Senoia, NC 27504

License # 31005
#19-291-0450
R value 2.0
Duct leakage 3.7%

John J. [Signature]

⚠ DANGER / PELIGRO

HAZARD OF ELECTRIC SHOCK, EXPLOSION, OR ARC FLASH

PELIGRO DE DESCARGA ELÉCTRICA, EXPLOSIÓN O DESTELLO POR ARQUEO

Always observe the instructions carefully. If you are not qualified to perform the work, call a qualified electrician. (Siempre observe las instrucciones cuidadosamente. Si usted no está calificado para realizar el trabajo, llame a un electricista calificado.)

This equipment must only be installed and serviced by qualified electrician personnel.

Turn off all power supplying this equipment before working on it. (Desconecte toda la energía que alimenta este equipo antes de trabajar.)

Always use a properly rated voltage sensing device to confirm power is off.

Replace all devices, doors and covers before putting in service to this equipment.

Failure to follow these instructions will result in death or serious injury.

DEP
2906875

PHOTOVOLTAIC
SYSTEM kWh METER



WARNING
DUAL POWER SUPPLY
SOURCES: UTILITY GRID
AND PV SOLAR
ELECTRIC SYSTEM

WARNING
POWER SOURCE
OUTPUT CONNECTION
DO NOT RELOCATE THIS
OVERCURRENT DEVICE

CAUTION
MULTIPLE SOURCES OF POWER
THE PV DISCONNECT IS LOCATED
BESIDE THE SERVICE METER

**RAPID SHUTDOWN
SWITCH FOR
SOLAR PV SYSTEM**

CAUTION
SOLAR ELECTRIC SYSTEM CONNECTED



solar edge SE10000H - US
Grid Support Utility Interactive
Non-Isolated Photovoltaic Inverter

Operating Voltage Range 80 - 480Vac
Max Input Current 37Adc
Max Continuous Output Power 10000Wac
Voltage Min - Nom - Max 211 - 240 - 264Vac
Max Continuous Output Current 42Aac
Max Output Fault Current 56.8Aac
Max Utility Restricted Current 5Aac
Frequency Min - Nom - Max 59.3 - 60.0 - 60.5Hz
Output Power Factor $\pm 1 - 0.95 - 1$
Max Ambient Temperature 55 C
Enclosure IP66 / Type III
With integrated ground fault protection per NEC 690.55 (C)
Type I Protective Arc-Fault Circuit-Protector
COMPLIES WITH SUPPLEMENTAL INTERCONNECTION REQUIREMENTS
Wi-Fi Password: s0C30g8
Activation: 40a s0Mv HmLd #T7a sAIZ YV8Q 4VY -

WiFi MAC:
84:D8:C5:4B:19:08
ZigBee MAC:



Intertek
4004500

PN: SE10000H - US0008E14
SN: 8V1923 - 07502776C - 5A

solar edge



PHOTOVOLTAIC RAPID
SHUTDOWN SYSTEM

solar edge



ETL LISTED
CONFORMS TO
UL9540
CLASSIFIED TO
CLASS 2
CLASS 3



Intertek
4004500

7502776C - 5A



Complies with NEC 690.55 (C) and 690.55 (D) The enclosed device complies with part 15 of the FCC Rules. Operation is subject to the following two conditions: 1. This device may not cause harmful interference and 2. This device must accept any interference received, including interference that may cause undesired operation.
www.solar-edge.com
Made in Vietnam

EATON®

General Duty Safety Switch
Interrupteur de sécurité à usage général
Interruptor de seguridad de servicio general
60 A, 240 V~, 60 Hz

Complete ratings inside
Valeurs nominales complètes à l'intérieur
Información completa de capacidades en el interior

Further instructions inside
Autres instructions à l'intérieur
Instrucciones adicionales en el interior

Made in U.S.A. / Fabriqué aux É.-U. / Hecho en E.U.A.

⚠ DANGER
HAZARDOUS VOLTAGE. WILL CAUSE SEVERE INJURY OR DEATH.
• Never operate with wet hands or clothes.
• Turn OFF power ahead of work before doing any work inside. Support all wires. Close cover before working.
TENSIÓN PELIGROSA. PUEDE CAUSAR HERIDAS SEVERAS O LA MUERTE.
• No opere con las manos húmedas o con la ropa mojada.
• Cierre el interruptor de servicio antes de trabajar dentro de la caja. Apoye todos los cables. Cierre la tapa antes de trabajar.
⚠ PELIGRO
VOLTAGE PELIGROSO. PUEDE CAUSAR HERIDAS SEVERAS O LA MUERTE.
• Nunca opere el interruptor con la humedad o con la ropa mojada.
• Desconecte la alimentación del interruptor antes de trabajar dentro de la caja. Apoye todos los cables. Cierre la tapa antes de trabajar.

314300



ON
|

AC DISCONNECT
PHOTOVOLTAIC SYSTEM
POWER SOURCE

RATED AC OUTPUT CURRENT **42** AMPS
NOMINAL OPERATING AC VOLTAGE **240** VOLTS

⚠ WARNING
ELECTRIC SHOCK HAZARD
TERMINALS ON THE LINE AND LOAD SIDES MAY BE ENERGIZED IN THE OPEN POSITION

OFF
○

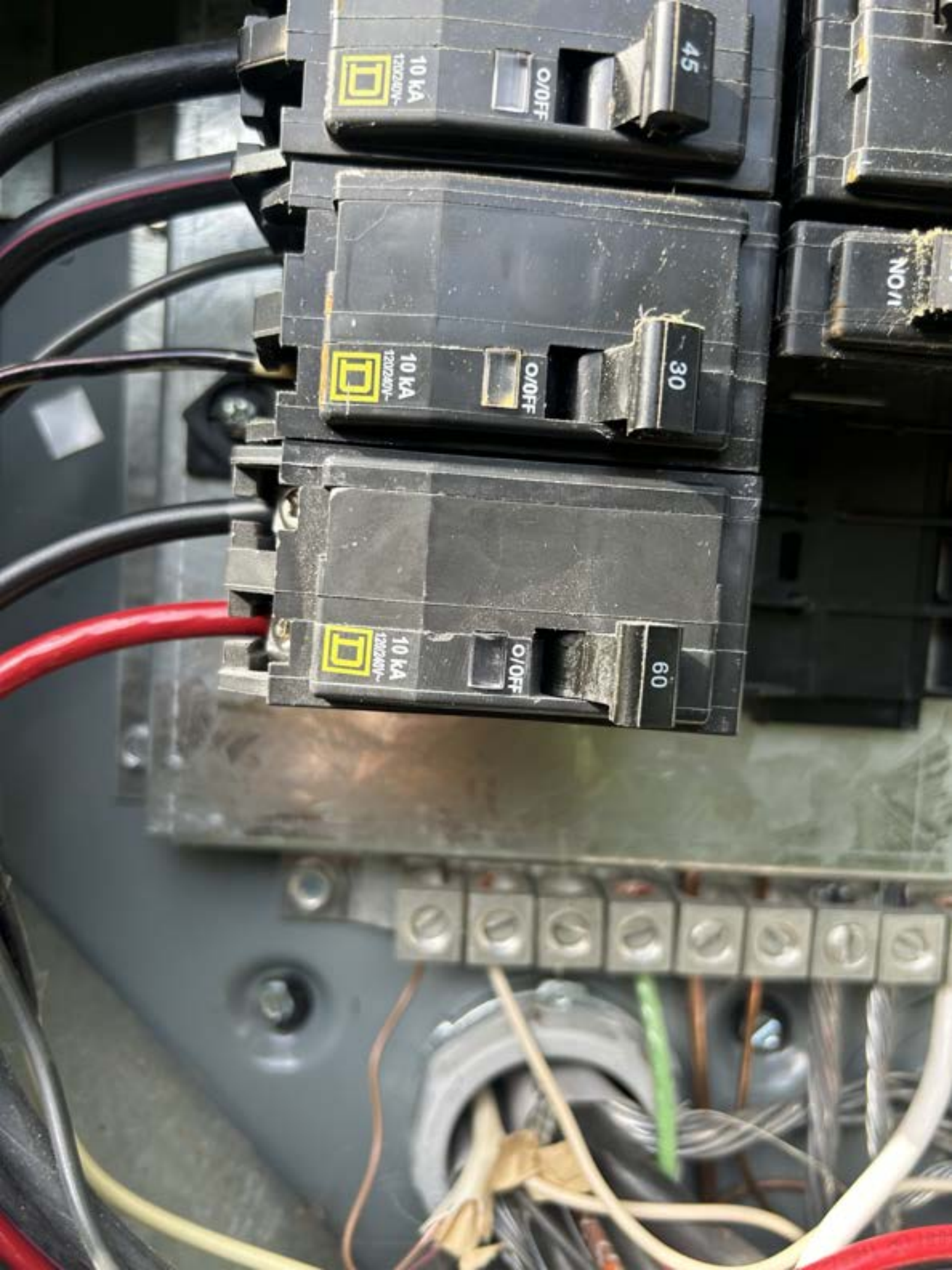
SOLAR PV SYSTEM
EQUIPPED WITH
RAPID SHUTDOWN

TURN RAPID SHUTDOWN SWITCH TO THE "OFF" POSITION TO SHUT DOWN PV SYSTEM AND REDUCE SHOCK HAZARD IN THE ARRAY

RAPID SHUTDOWN
SWITCH FOR
SOLAR PV SYSTEM







45

10 kA
120V/240V~

O/OFF

30

10 kA
120V/240V~

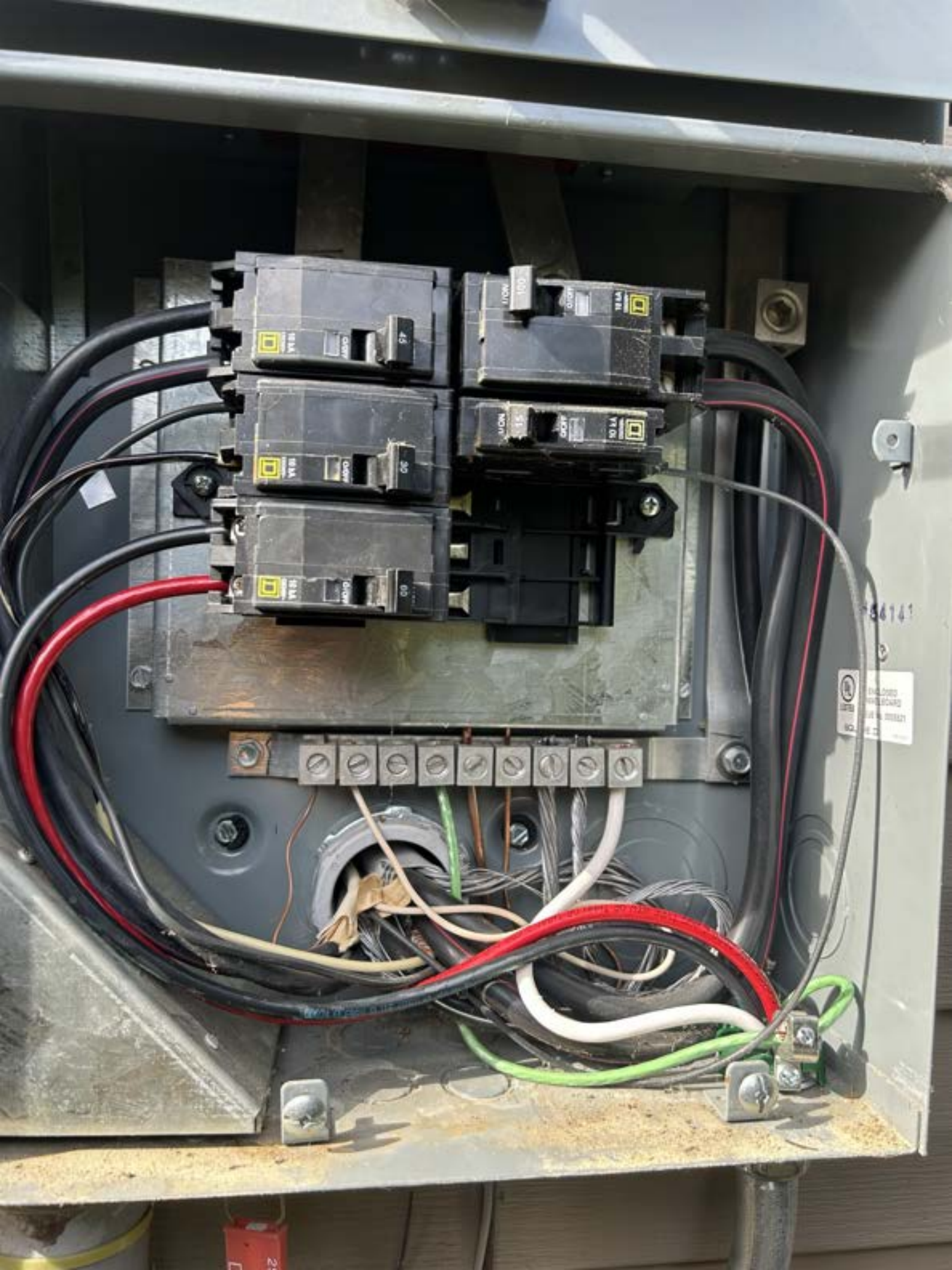
O/OFF

60

10 kA
120V/240V~

O/OFF

NO/1



This section contains three circuit breakers and three fuses. The circuit breakers are arranged in two columns. The left column has three breakers with trip ratings of 50, 20, and 10. The right column has three fuses with ratings of 100A, 35, and 15. Each breaker and fuse has a yellow square logo and a 'LOCK' indicator.

A terminal block with 10 screw terminals is located below the breakers and fuses. It is connected to a bundle of wires, including several white wires and a few colored wires (green, orange, blue).

86141
 ENCLOSURE W/RECORD
 FOR 10/000271
 NO. 1

LINE

SNAP-IN
2ND

SNAP-IN
2ND

REINSTALL AFTER WIRING

REINSTALE DESPUÉS DEL CABLEADO

RÉINSTALLER APRÈS L'INSTALLATION ÉLECTRIQUE

INSTALL 1ST

Edison
250VAC 50/60Hz
EOMR

Edison
250VAC 50/60Hz
EOMR





Edison
TIME-DELAY
DUAL-ELEMENT
CURRENT-LIMITING
CLASS RK5 FUSE
ECNR60
250Vac or less
AC IN 200kVA RMS
125 VDC 20kA

Edison
TIME-DELAY
DUAL-ELEMENT
CURRENT-LIMITING
CLASS RK5 FUSE
ECNR60
250Vac or less
AC IN 200kVA RMS
125 VDC 20kA

