







3/4

MADE IN U.S.A.



218 Hook Dr.  
Fuquay-Varina,  
NC 27526

KiFlex  
ULTIMATE  
24-27A  
818A1  
MTG



























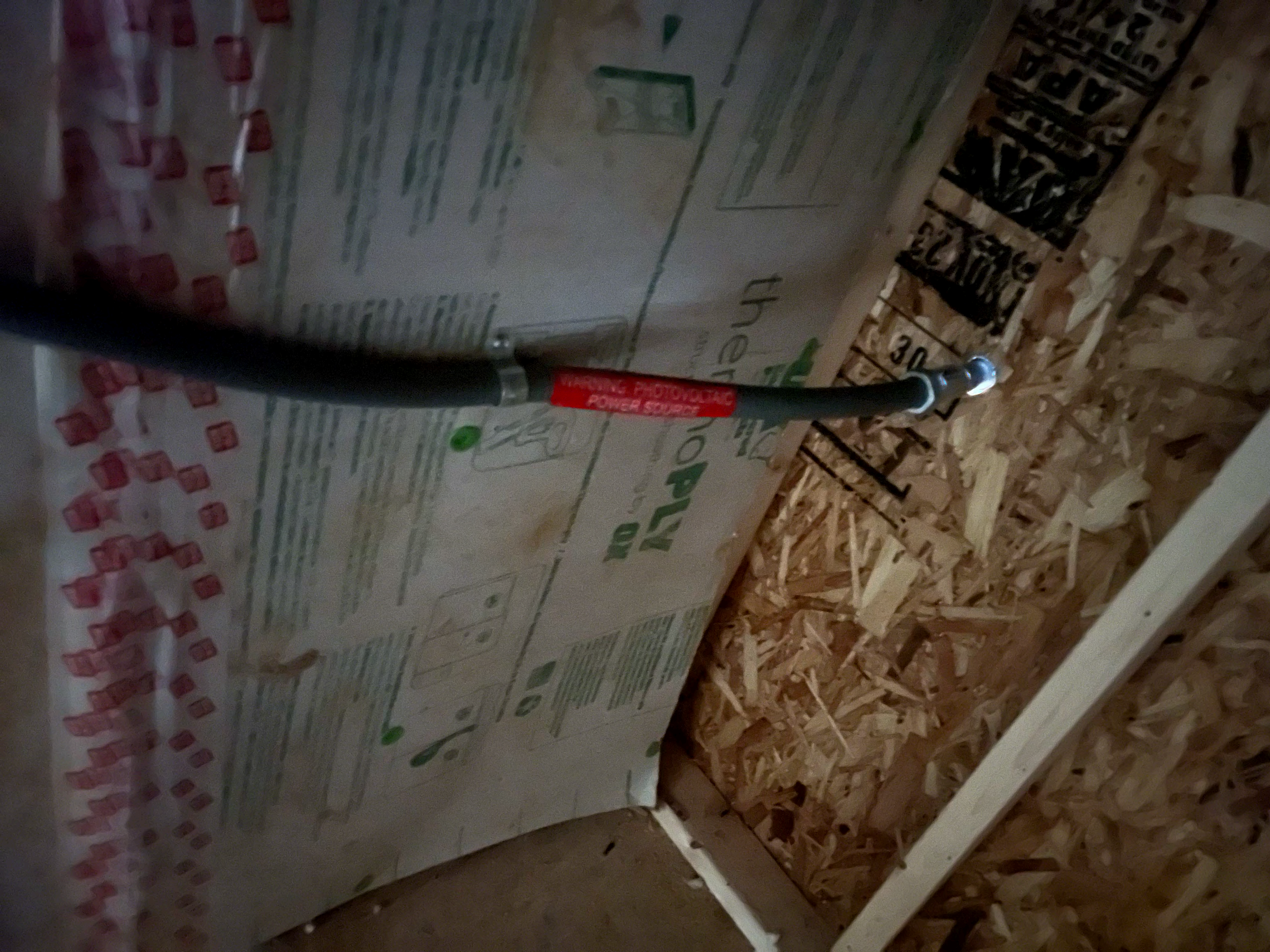




thermo  
PLY  
DX







WARNING PHOTOVOLTAIC POWER SOURCE

NO PLY

30



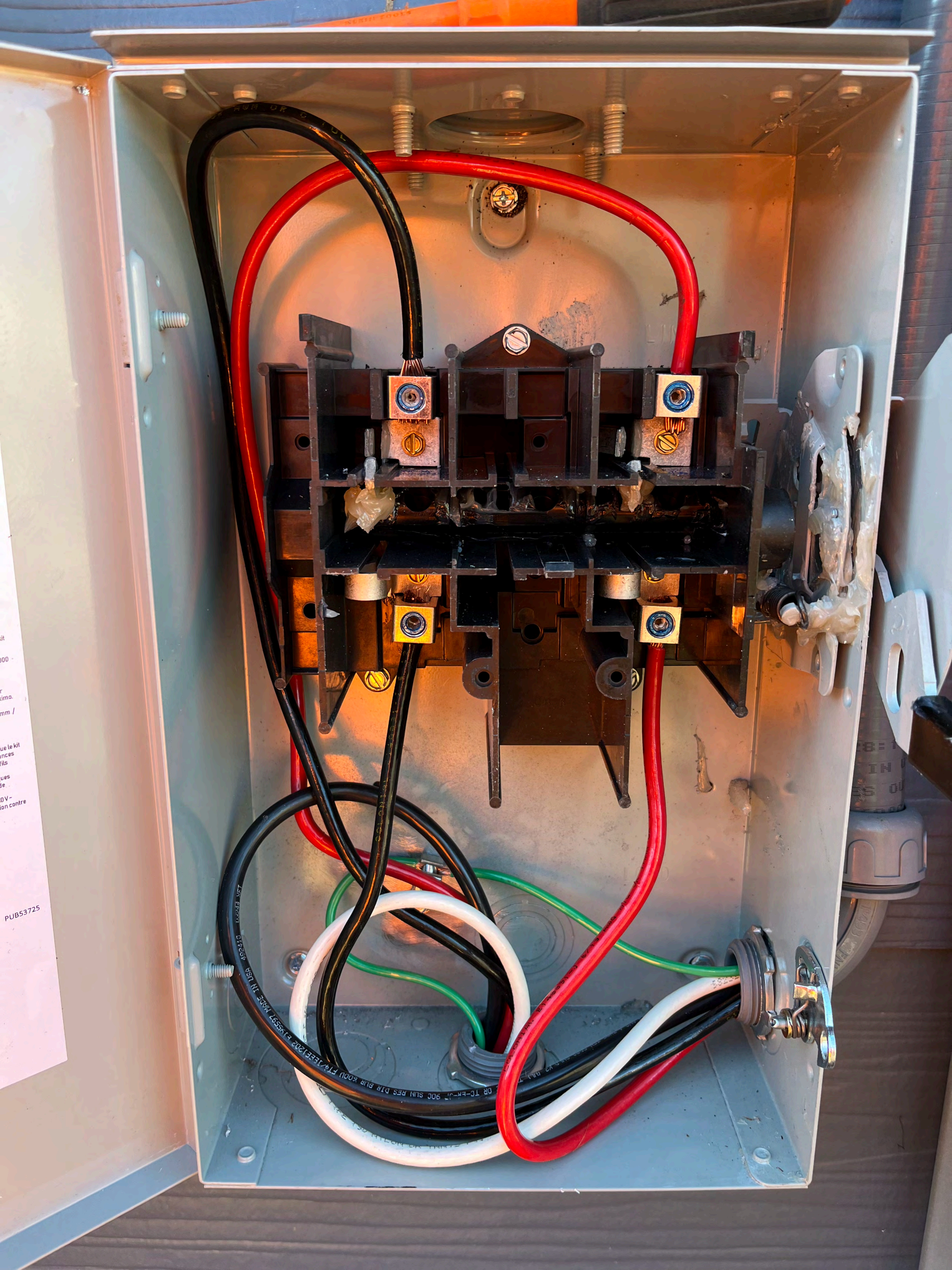


EXPOSED TO WEATHER

OSB

DK  
thermoPLY  
DK



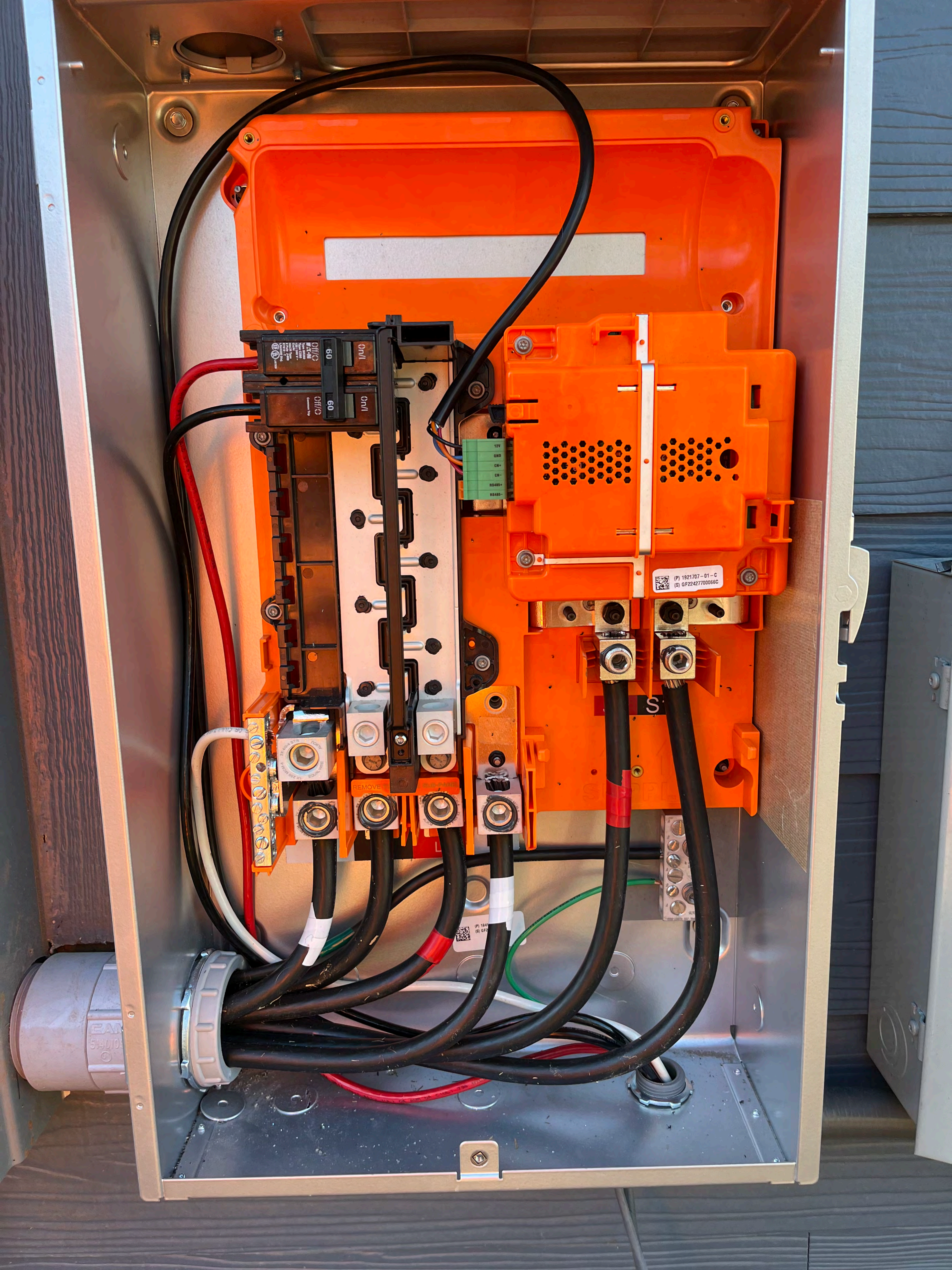


ue le kit  
ances  
rils  
ues  
de  
0V-  
ion contre

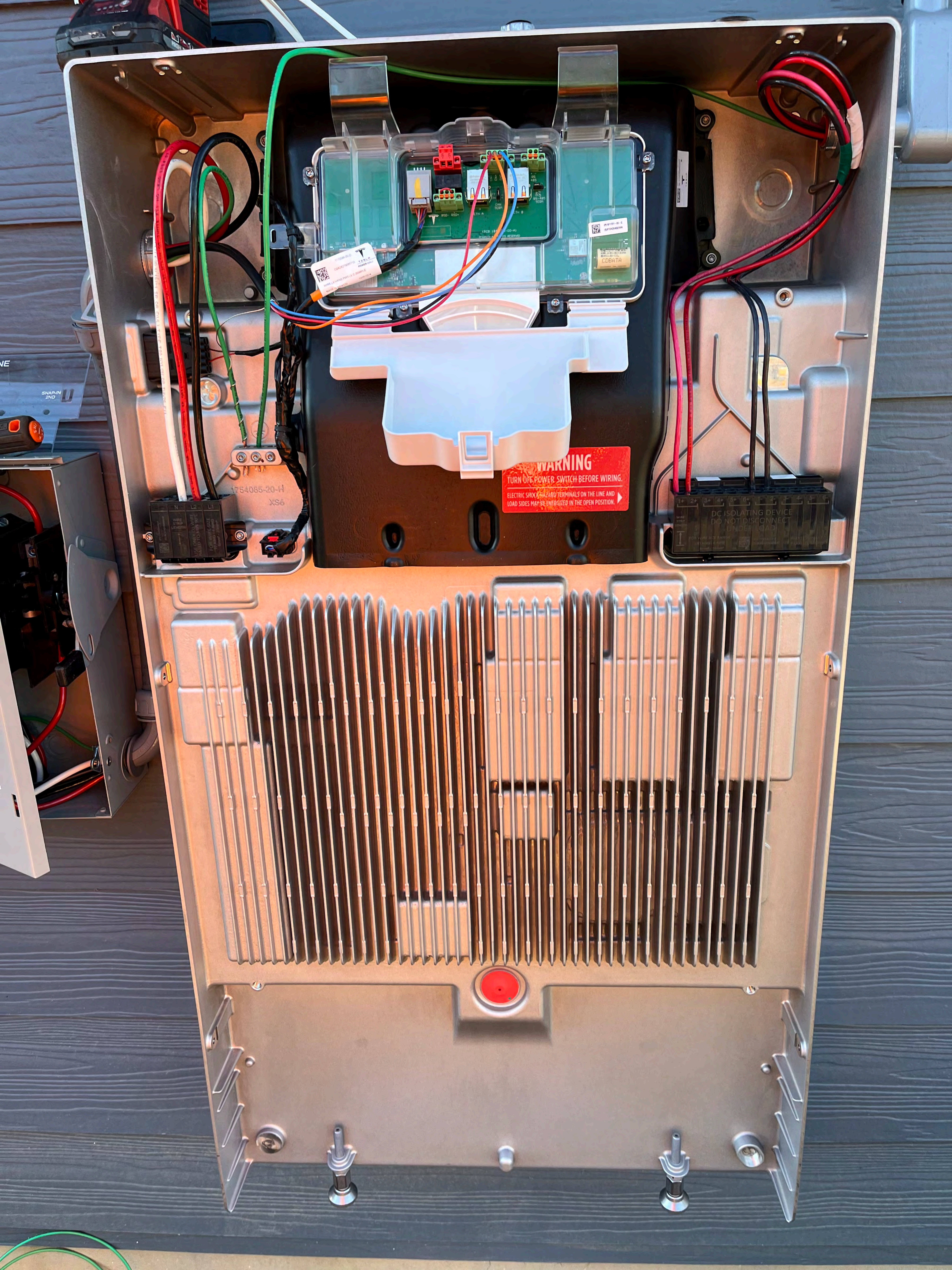
PUB53725

DR TC-FR-07 90C SUN RES DIR BURE ROU FT/JEEB/202 F19557 MADE IN USA 43623410 01/2002

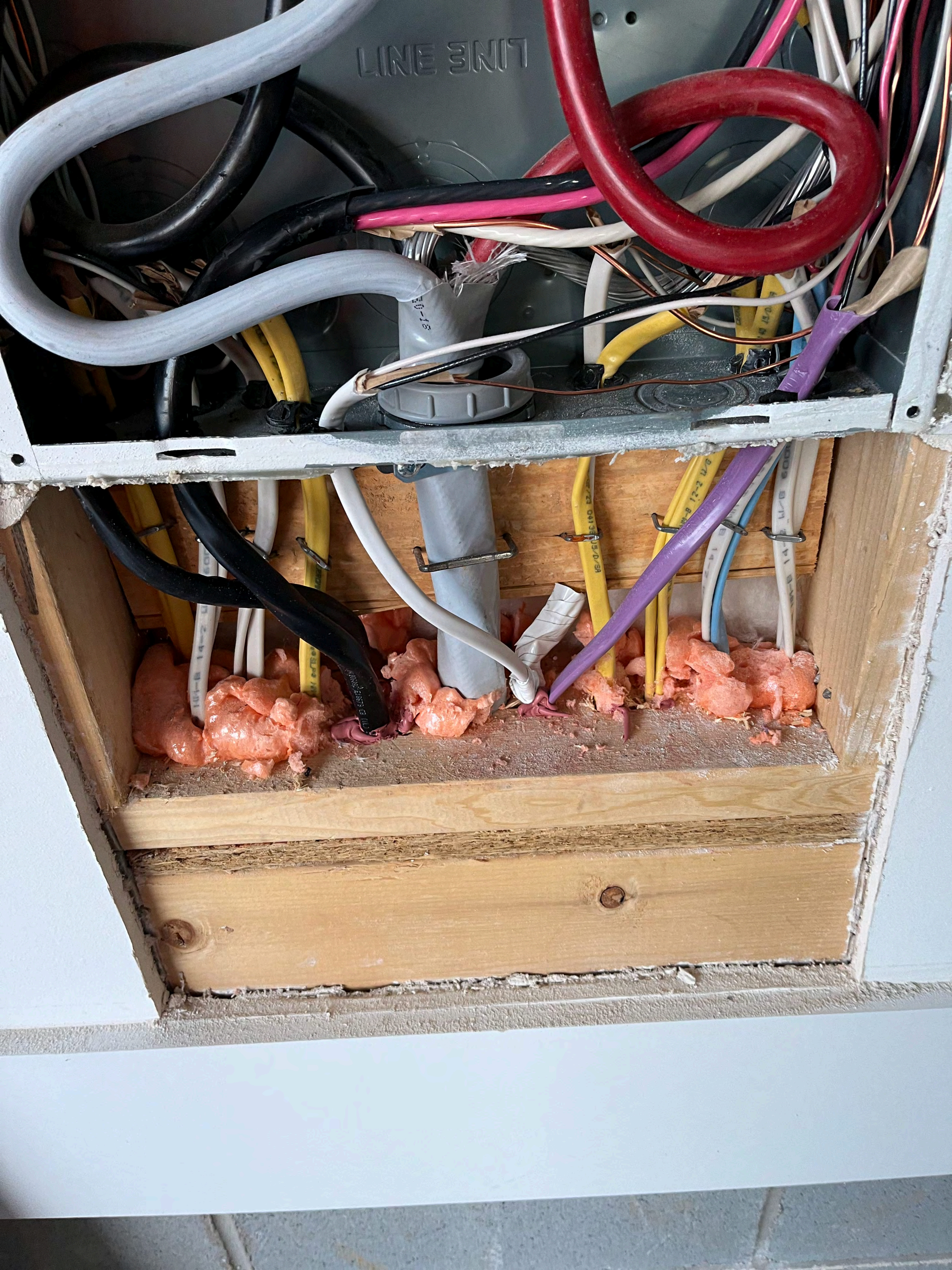












LINE 3N17

20-18

10-1-B 14-2

22 0413 15-0/91

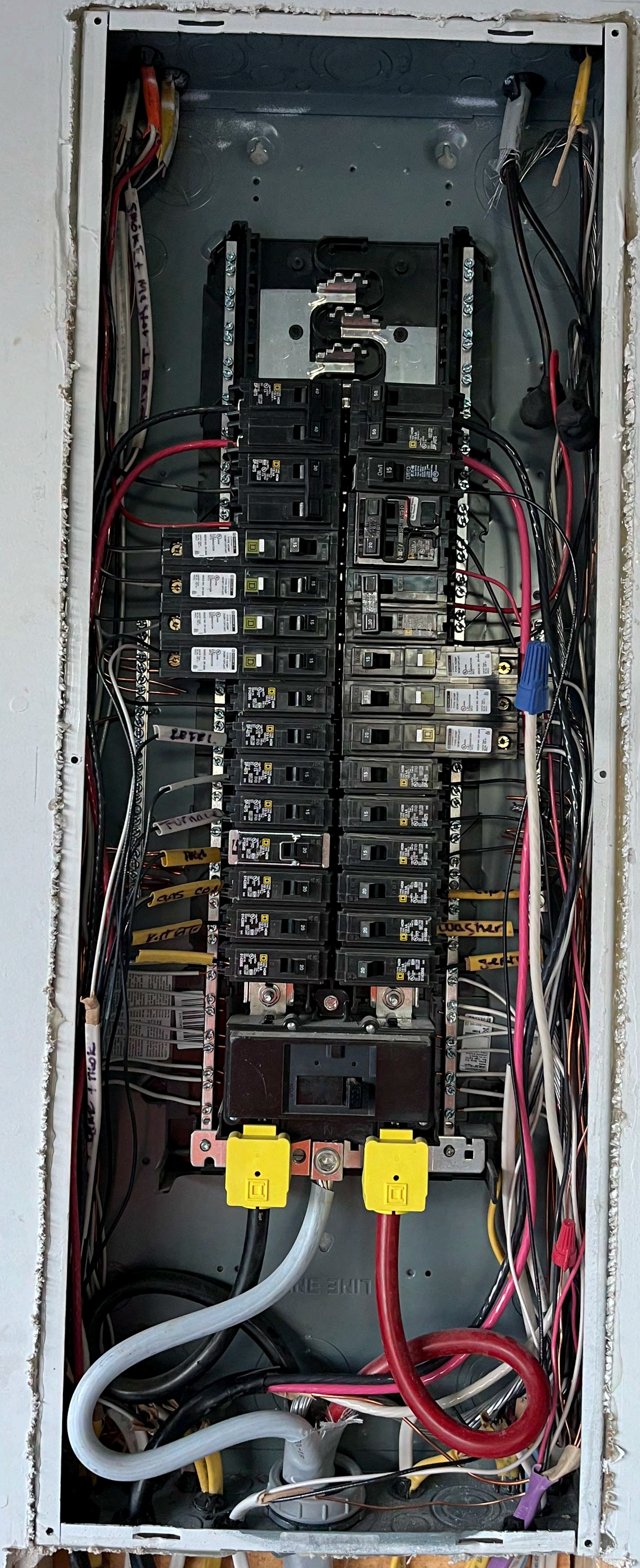
10-8 12-2 0/8

11-8 600

11-8 14

11-8 14















TECHNICAL INFORMATION

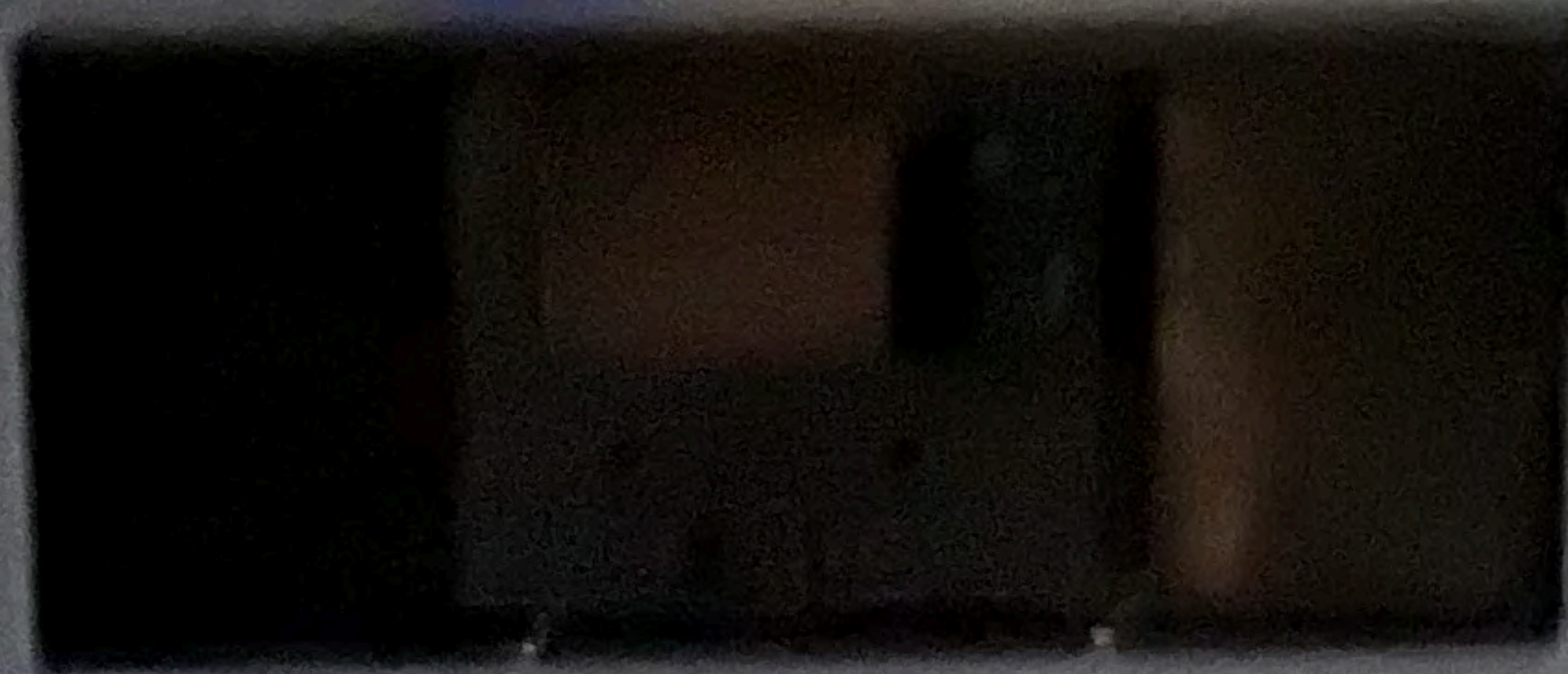
Blue tag

SERVICE DISCONNECT  
DESCONEXION DE ALIMENTACION

Wiring diagram showing connections for a 240V/120V system. The diagram includes a main neutral bus and two 120V legs. Connections are shown for various loads, with some marked with 'X' to indicate they are not to be connected.

Terminal	120V	240V
1		
2		
3		
4		
5		
6		
7		
8		
9		
10		
11		
12		
13		
14		
15		
16		
17		
18		
19		
20		
21		
22		
23		
24		
25		
26		
27		
28		
29		
30		
31		
32		
33		
34		
35		
36		
37		
38		
39		
40		
41		
42		
43		
44		
45		
46		
47		
48		
49		
50		
51		
52		
53		
54		
55		
56		
57		
58		
59		
60		
61		
62		
63		
64		
65		
66		
67		
68		
69		
70		
71		
72		
73		
74		
75		
76		
77		
78		
79		
80		
81		
82		
83		
84		
85		
86		
87		
88		
89		
90		
91		
92		
93		
94		
95		
96		
97		
98		
99		
100		

SQUARE D COMPANY



Additional technical information and safety warnings, including a warning to not add loads to the panel.

**PHOTOVOLTAIC SYSTEM  
COMBINER PANEL  
DO NOT ADD LOADS**

TECHNICAL INFORMATION

Wiring diagram showing connections for a 240V/120V system. The diagram includes a main neutral bus and two 120V legs. Connections are shown for various loads, with some marked with 'X' to indicate they are not to be connected.

SQUARE D COMPANY





**WARNING ADVERTENCIA AVERTISSEMENT**

**DANGER PELIGRO**

**DANGER**

Range A/C Sub  
 Range A/C Sub  
 Dishwasher  
 Oven  
 Oven

1  
2  
3  
4  
5  
6  
7  
8  
9  
10  
11  
12  
13  
14  
15  
16  
17  
18  
19  
20  
21  
22  
23  
24  
25  
26  
27  
28  
29  
30  
31  
32  
33  
34  
35  
36  
37  
38  
39  
40  
41  
42

NON-CODIFICADO

**APPENDIX G-1 ENERGY EFFICIENCY CERTIFICATE**  
 The Energy Star Program is a U.S. Environmental Protection Agency (EPA) and U.S. Department of Energy (DOE) initiative to help consumers save money and protect the environment by choosing energy-efficient products.

**215 Hook Drive**  
 1000 11/1/2017

Appliance	Model	Year	Energy Star	SEER	Energy Factor	Water Factor	Other
Refrigerator	15	10	Yes	13	0.95	1.5	
Washer	10	10	Yes	1.5	1.2		
Dishwasher	10	10	Yes	2.8			
Water Heater	10	10	Yes				
Boiler	10	10	Yes				
Stove	10	10	Yes				
AC	10	10	Yes	13			
Water Heater	10	10	Yes				
Boiler	10	10	Yes				
Stove	10	10	Yes				
AC	10	10	Yes	13			
Water Heater	10	10	Yes				
Boiler	10	10	Yes				
Stove	10	10	Yes				
AC	10	10	Yes	13			
Water Heater	10	10	Yes				
Boiler	10	10	Yes				
Stove	10	10	Yes				
AC	10	10	Yes	13			
Water Heater	10	10	Yes				
Boiler	10	10	Yes				
Stove	10	10	Yes				
AC	10	10	Yes	13			
Water Heater	10	10	Yes				
Boiler	10	10	Yes				
Stove	10	10	Yes				
AC	10	10	Yes	13			
Water Heater	10	10	Yes				
Boiler	10	10	Yes				
Stove	10	10	Yes				
AC	10	10	Yes	13			
Water Heater	10	10	Yes				
Boiler	10	10	Yes				
Stove	10	10	Yes				
AC	10	10	Yes	13			
Water Heater	10	10	Yes				
Boiler	10	10	Yes				
Stove	10	10	Yes				
AC	10	10	Yes	13			
Water Heater	10	10	Yes				
Boiler	10	10	Yes				
Stove	10	10	Yes				
AC	10	10	Yes	13			
Water Heater	10	10	Yes				
Boiler	10	10	Yes				
Stove	10	10	Yes				
AC	10	10	Yes	13			
Water Heater	10	10	Yes				
Boiler	10	10	Yes				
Stove	10	10	Yes				
AC	10	10	Yes	13			
Water Heater	10	10	Yes				
Boiler	10	10	Yes				
Stove	10	10	Yes				
AC	10	10	Yes	13			
Water Heater	10	10	Yes				
Boiler	10	10	Yes				
Stove	10	10	Yes				
AC	10	10	Yes	13			
Water Heater	10	10	Yes				
Boiler	10	10	Yes				
Stove	10	10	Yes				
AC	10	10	Yes	13			
Water Heater	10	10	Yes				
Boiler	10	10	Yes				
Stove	10	10	Yes				
AC	10	10	Yes	13			
Water Heater	10	10	Yes				
Boiler	10	10	Yes				
Stove	10	10	Yes				
AC	10	10	Yes	13			
Water Heater	10	10	Yes				
Boiler	10	10	Yes				
Stove	10	10	Yes				
AC	10	10	Yes	13			
Water Heater	10	10	Yes				
Boiler	10	10	Yes				
Stove	10	10	Yes				
AC	10	10	Yes	13			
Water Heater	10	10	Yes				
Boiler	10	10	Yes				
Stove	10	10	Yes				
AC	10	10	Yes	13			
Water Heater	10	10	Yes				
Boiler	10	10	Yes				
Stove	10	10	Yes				
AC	10	10	Yes	13			
Water Heater	10	10	Yes				
Boiler	10	10	Yes				
Stove	10	10	Yes				
AC	10	10	Yes	13			
Water Heater	10	10	Yes				
Boiler	10	10	Yes				
Stove	10	10	Yes				
AC	10	10	Yes	13			
Water Heater	10	10	Yes				
Boiler	10	10	Yes				
Stove	10	10	Yes				
AC	10	10	Yes	13			
Water Heater	10	10	Yes				
Boiler	10	10	Yes				
Stove	10	10	Yes				
AC	10	10	Yes	13			
Water Heater	10	10	Yes				
Boiler	10	10	Yes				
Stove	10	10	Yes				
AC	10	10	Yes	13			
Water Heater	10	10	Yes				
Boiler	10	10	Yes				
Stove	10	10	Yes				
AC	10	10	Yes	13			
Water Heater	10	10	Yes				
Boiler	10	10	Yes				
Stove	10	10	Yes				
AC	10	10	Yes	13			
Water Heater	10	10	Yes				
Boiler	10	10	Yes				
Stove	10	10	Yes				
AC	10	10	Yes	13			
Water Heater	10	10	Yes				
Boiler	10	10	Yes				
Stove	10	10	Yes				
AC	10	10	Yes	13			
Water Heater	10	10	Yes				
Boiler	10	10	Yes				
Stove	10	10	Yes				
AC	10	10	Yes	13			
Water Heater	10	10	Yes				
Boiler	10	10	Yes				
Stove	10	10	Yes				
AC	10	10	Yes	13			
Water Heater	10	10	Yes				
Boiler	10	10	Yes				
Stove	10	10	Yes				
AC	10	10	Yes	13			
Water Heater	10	10	Yes				
Boiler	10	10	Yes				
Stove	10	10	Yes				
AC	10	10	Yes	13			
Water Heater	10	10	Yes				
Boiler	10	10	Yes				
Stove	10	10	Yes				
AC	10	10	Yes	13			
Water Heater	10	10	Yes				
Boiler	10	10	Yes				
Stove	10	10	Yes				
AC	10	10	Yes	13			
Water Heater	10	10	Yes				
Boiler	10	10	Yes				
Stove	10	10	Yes				
AC	10	10	Yes	13			
Water Heater	10	10	Yes				
Boiler	10	10	Yes				
Stove	10	10	Yes				
AC	10	10	Yes	13			
Water Heater	10	10	Yes				
Boiler	10	10	Yes				
Stove	10	10	Yes				
AC	10	10	Yes	13			
Water Heater	10	10	Yes				
Boiler	10	10	Yes				
Stove	10	10	Yes				
AC	10	10	Yes	13			
Water Heater	10	10	Yes				
Boiler	10	10	Yes				
Stove	10	10	Yes				
AC	10	10	Yes	13			
Water Heater	10	10	Yes				
Boiler	10	10	Yes				
Stove	10	10	Yes				
AC	10	10	Yes	13			
Water Heater	10	10	Yes				
Boiler	10	10	Yes				
Stove	10	10	Yes				
AC	10	10	Yes	13			
Water Heater	10	10	Yes				
Boiler	10	10	Yes				
Stove	10	10	Yes				
AC	10	10	Yes	13			
Water Heater	10	10	Yes				
Boiler	10	10	Yes				
Stove	10	10	Yes				
AC	10	10	Yes	13			
Water Heater	10	10	Yes				
Boiler	10	10	Yes				
Stove	10	10	Yes				
AC	10	10	Yes	13			
Water Heater	10	10	Yes				
Boiler	10	10	Yes				
Stove	10	10	Yes				
AC	10	10	Yes	13			
Water Heater	10	10	Yes				
Boiler	10	10	Yes				
Stove	10	10	Yes				
AC	10	10	Yes	13			
Water Heater	10	10	Yes				
Boiler	10	10	Yes				
Stove	10	10	Yes				
AC	10	10	Yes	13			
Water Heater	10	10	Yes				
Boiler	10	10	Yes				
Stove	10	10	Yes				
AC	10	10	Yes	13			
Water Heater	10	10	Yes				
Boiler	10	10	Yes				
Stove	10	10	Yes				
AC	10	10	Yes	13			
Water Heater	10	10	Yes				
Boiler	10	10	Yes				
Stove	10	10	Yes				
AC	10	10	Yes	13			
Water Heater	10	10	Yes				
Boiler	10	10	Yes				
Stove	10	10	Yes				
AC	10	10	Yes	13			
Water Heater	10	10	Yes				
Boiler	10	10	Yes				
Stove	10	10	Yes				
AC	10	10	Yes	13			
Water Heater	10	10	Yes				





▲ CAUTION  
TRI POWER SOURCES  
SECOND SOURCE IS AC BATTERY  
THIRD SOURCE IS PV SYSTEM



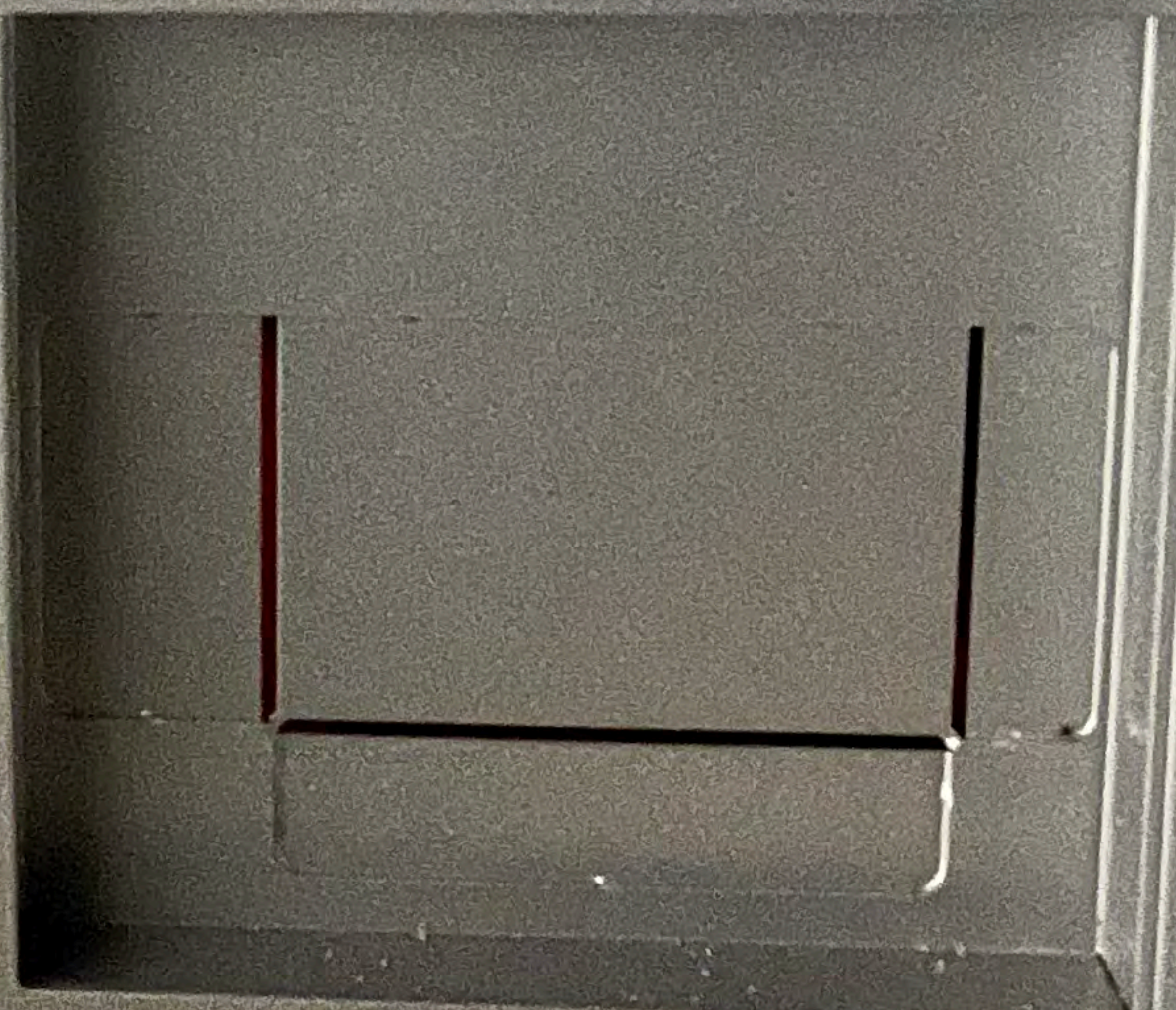


MAIN BATTERY  
DISCONNECT



PHOTOVOLTAIC SYSTEM  
AC DISCONNECT

OPERATING VOLTAGE	240	VOLTS
OPERATING CURRENT	48	AMPS



GATEWAY 3

154180 - 01 - 0  
032047788512

FC

INPUT / OUTPUT

A terminal block with two yellow warning triangles and a small '1' indicator.







**RAPID SHUTDOWN SWITCH FOR SOLAR PV SYSTEM**  
PV SYSTEM DISCONNECT (DC) INSIDE

**PHOTOVOLTAIC SYSTEM DC DISCONNECT**

OPERATING VOLTAGE	60-550 VDC
OPERATING CURRENT	10.97 AMPS
MAX SYSTEM VOLTAGE	600 VDC
SHORT CIRCUIT CURRENT	17.57 AMPS
CHARGE CONTROLLER MAX	NA AMPS

MAIN BATTERY SYSTEM DISCONNECT

MAX DC VOLTAGE OF PV SYSTEM: \_\_\_\_\_ V

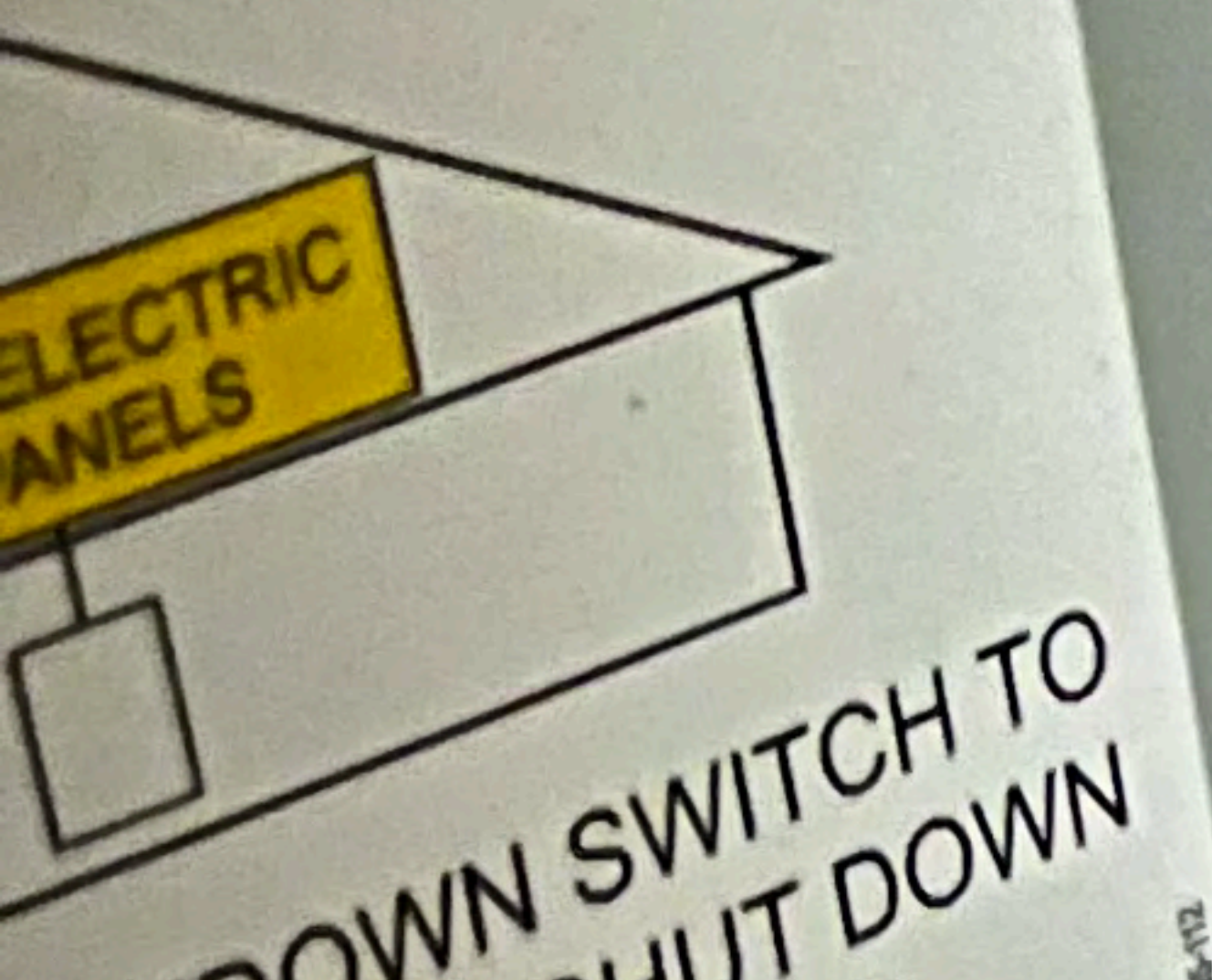
TESLA POWERWALL ENERGY STORAGE SYSTEM GRID SUPPORT UTILITY INTERACTIVE & STANDALONE INVERTER

PHOTOVOLTAIC (PV) POWER CONVERSION EQUIPMENT

Model	Model	Model	Model
Capacity	Capacity	Capacity	Capacity
Power	Power	Power	Power
Efficiency	Efficiency	Efficiency	Efficiency
Temperature	Temperature	Temperature	Temperature
Dimensions	Dimensions	Dimensions	Dimensions
Weight	Weight	Weight	Weight
Warranty	Warranty	Warranty	Warranty

CAUTION

**SYSTEM WITH SHUTDOWN**



SHUTDOWN SWITCH TO POSITION TO SHUT DOWN SYSTEM AND REDUCE HAZARD IN THE ARRAY

**WARNING**  
ELECTRIC SHOCK HAZARD  
WIRING ON THE LINE AND DEVICES MAY BE ENERGIZED IN THE OPEN POSITION

**PHOTOVOLTAIC SYSTEM AC DISCONNECT**

















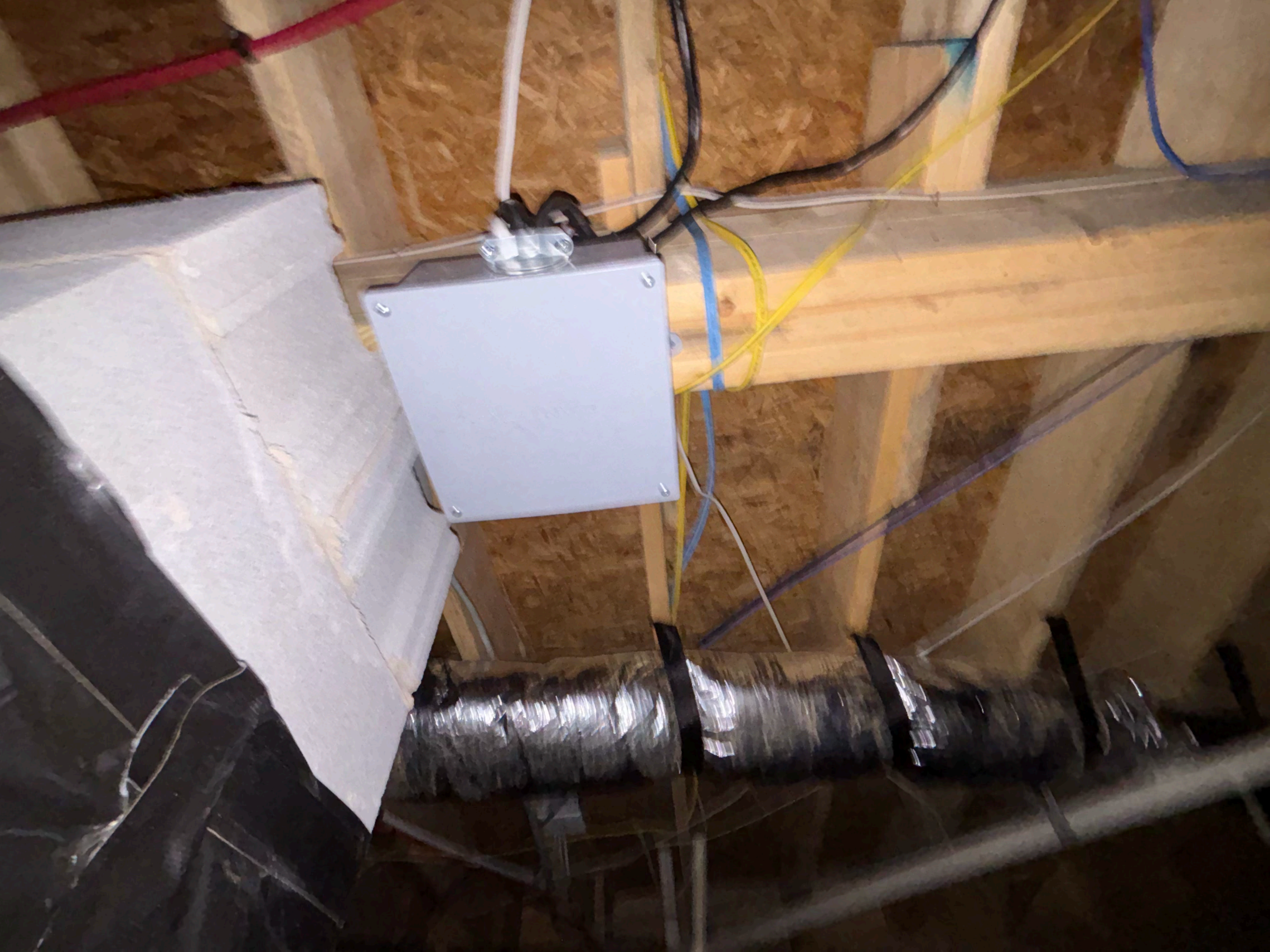
































Do not disconnect  
under load





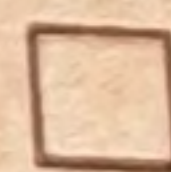
**SOLADECK**

Listed UL 1741; CSA C22.2 No 290 Nema Type 3R

Model 0599B



Model 0599G



**Units Include: Base, Cover, Instructions and Hardware**

RSTC Enterprises Inc., Eau Claire, WI

[www.soladeck.com](http://www.soladeck.com)

**Manufactured and Assembled in the USA**

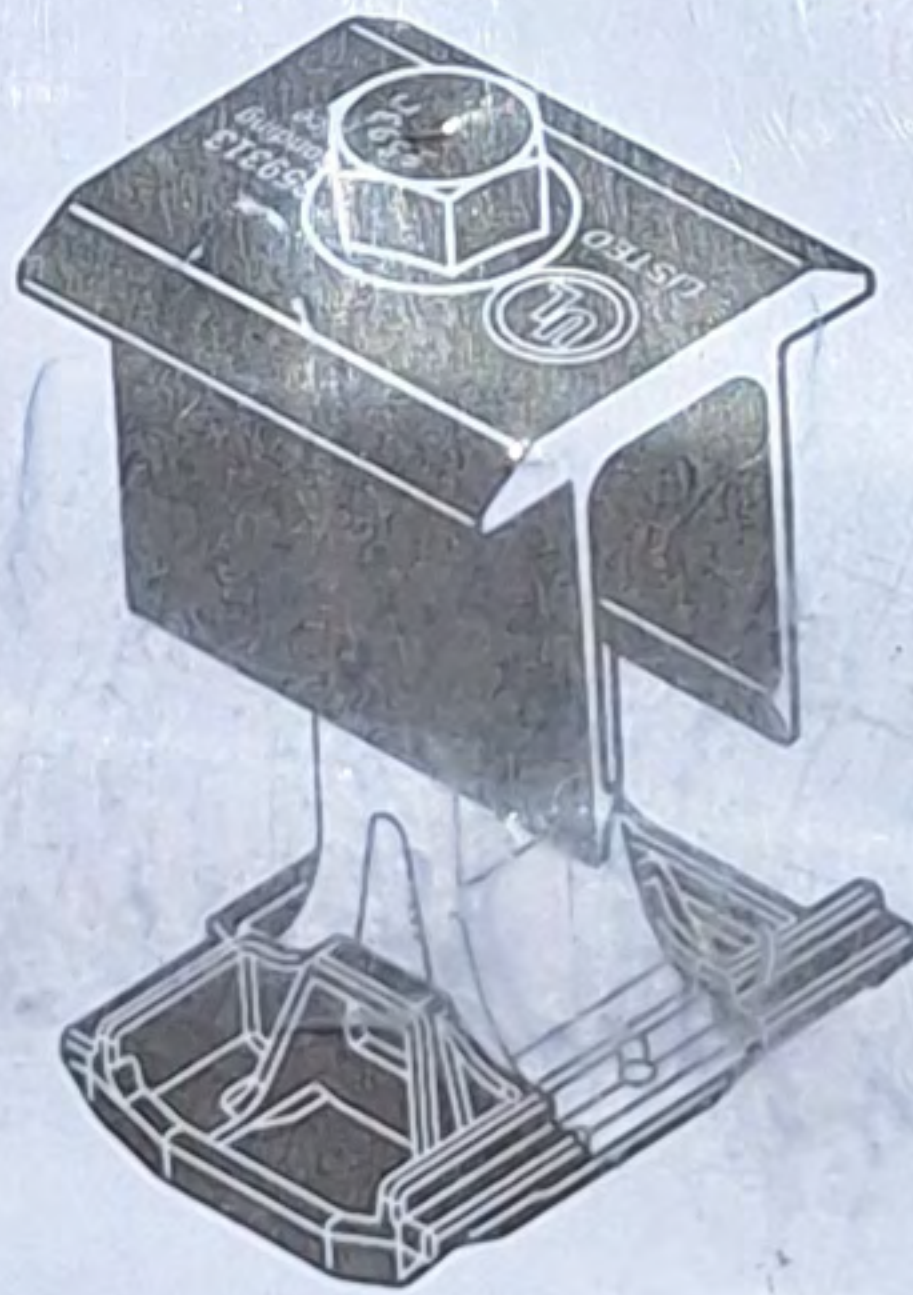


**SnapNrack**  
Solar Mounting Solutions



www.snapnrack.com

**242-02071**  
**SNAPNRACK,**  
**ULTRA RAIL**  
**MID CLAMP,**  
**BLACK**



Installation manuals

05/02/24

QTY:20

SID0413

**SnapNrack®**



MCI-2 | PV RAPID  
SHUTDOWN EQUIP  
(P) 1879359-00-B  
(S) GF22427200060K

MAX DC VOLTAGE 1000V  
OPERATING DC VOLTAGE 0-165V  
MAX CURRENT 13A

MAX SHORT CIRCUIT CURRENT 17A  
SHUTDOWN TIME LIMIT 10SEC  
OPERATING TEMP -45C TO 70C  
NEMA 4X/IP65  
MADE IN USA



US

Intertek

5015303

CONFORMS TO UL STD 1741





218



NS22A1E23C9684

**CertainTeed**  
SAINT-GOBAIN

MODEL TYPE : CT370HC11-06 Made in Indonesia

Nominal Maximum Power	(Pmax):	370W
Maximum operating Voltage	(Vmp):	34.40V
Maximum operating Current	(Imp):	10.76A
Open Circuit Voltage	(Voc):	41.90V
Short Circuit Current	(Isc):	11.29A
Maximum System Voltage		1500V
Maximum Series Fuse Rating		20A

All electrical data at Standard Test Conditions (STC): Irradiance of 1000W/m<sup>2</sup>, spectrum AM1.5 and temperature of 25°C.

Fire Rating - CLASS C/ TYPE I  
Protection Class - CLASS II

**WARNING - ELECTRIC HAZARD**

 This solar module produces electrical voltage when exposed to sunlight or intense artificial lights. Proper precautions associated with electrical power systems must be taken while handling and installing this product.

**PLEASE READ THE INSTRUCTION MANUAL FOR MORE INFORMATION PRIOR TO INSTALLATION.**

Certain Teed limited Warranty is valid only for products purchased either directly from Certain Teed or from an authorized reseller who is in your region or authorized with written permission from Certain Teed.

CertainTeed Inc. 370  
15417700-001-001  
CertainTeed USA, Inc.  
201 Moore Rd. Mahan, PA 15105  
TEL: 1-800-233-8990





NS22A1E23C9684

**CertainTeed**  
SAINT-GOBAIN

Made in Indonesia

**MODEL TYPE : CT370HC11-06**

Nominal Maximum Power	(Pmax):	370W
Maximum operating Voltage	(Vmp):	34.40V
Maximum operating Current	(Imp):	10.76A
Open Circuit Voltage	(Voc):	41.90V
Short Circuit Current	(Isc):	11.29A
Maximum System Voltage	:	1500V
Maximum Series Fuse Rating	:	20A

All electrical data at Standart Test Conditions (STC): Irradiance of 1000W/m<sup>2</sup>, spectrum AM1.5 and temperature of 25°C.

Fire Rating: CLASS C/ TYPE I  
Protection Class: CLASS II

**WARNING - ELECTRIC HAZARD**



This solar module produces electrical voltage when exposed to sunlight or intense artificial lights. Proper precautions associated with electrical power systems must be taken while handling and installing this product.

**PLEASE READ THE INSTRUCTION MANUAL FOR MORE INFORMATION PRIOR TO INSTALLATION.**

Certain Teed limited Warranty is valid only for products purchased either directly from Certain Teed or from an authorized reseller who is in your region or authorized with written permission from Certain Teed.



Intertek  
5019087

Conforms to UL STD.  
UL61730-1/-2,  
UL61215-1/-1-1/-2,  
Certified to CSA STD.  
C22.2 #61730-1/-2.

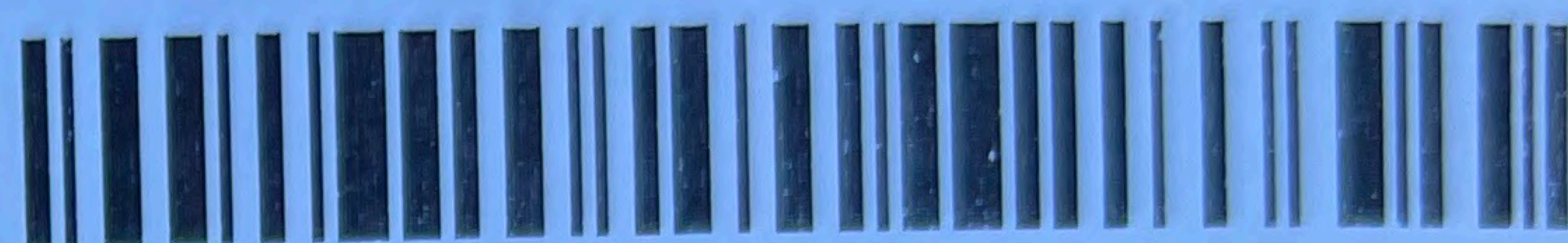
20 Moores Rd, Malvern,  
PA 19355  
TEL: 1-800-233-8990







# SnapNrack



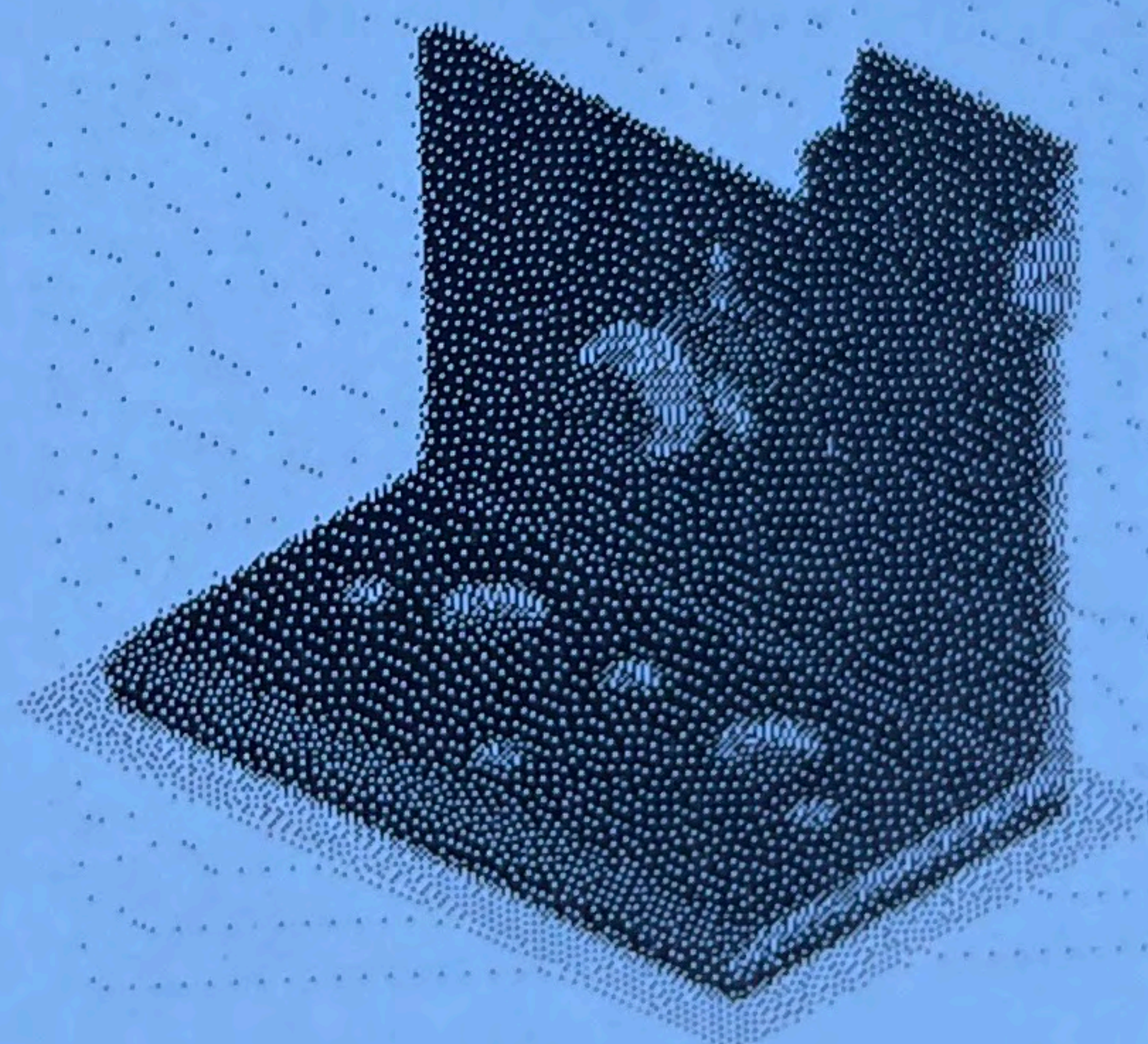
242-10038

[www.snapnrack.com](http://www.snapnrack.com)  
[www.snapnrack.com/patent](http://www.snapnrack.com/patent)



## 242-10038

SNAPNRACK,  
ULTRA RAIL  
ANCHORFOOT



installation-manuals

SnapNrack 775 Fiero Ln.  
San Luis Obispo, CA 93401

2524794

10/23/24

QTY: 20

Product of Chihuahua, Mexico



