

ENPHASE.
IQ Combiner 5
 Photovoltaic
 Combiner Box
 X-IQ-AM1-240-5

Scan for QIG

Electrical ratings

Voltage 240V~, 60Hz

DG Breakers 80A MAX (combined)

DG Inputs 64A MAX (combined)

Output 65A MAX, 90A MAX feeder OCPD

Temperature 46°C MAX ambient

NOM **FC**

IQ GATEWAY CONTAINS
 FCC ID: W32-WG78DBV0
 IC ID: 10462A-WG78DBV0

CTRL BOARD CONTAINS
 FCC ID: MCO-KBEE3
 IC ID: 1846A-KBEE3

202438006332

S/N: 202438006332

P/N: 883-00358 52

Dedicated solar and DG Combiner Box - do not add loads
 10 AMP or 15 AMP IQ Gateway Breaker not used for backfeed

Connection	Wire sizes	Torque
DG Breaker (1, 2, 3, 4)	14-10 AWG	2.2 Nm (20 lb-in)
	8 AWG	2.8 Nm (25 lb-in)
	6-4 AWG	3.0 Nm (27 lb-in)
60A Circuit Breaker only	4-1/0 AWG	5.0 Nm (45 lb-in)
IQ Gateway Breaker (5)	14-10 AWG	2.26 Nm (20 lb-in)
IQ Gateway Power Terminals	14-10 AWG	1.4 Nm (12.4 lb-in)
Neutral and ground	Large screw	2-1/0 AWG 5.6 Nm (50 lb-in) 14-3 AWG 5.1 Nm (45 lb-in)
	Small screw	6 AWG 3.6 Nm (32 lb-in)
		8 AWG 2.6 Nm (23 lb-in)
10-14 AWG 2.3 Nm (20 lb-in)		
Main lug	10-4 AWG 5.0 Nm (45 lb-in)	
	3-2/0 AWG 5.6 Nm (50 lb-in)	
CTRL Connectors	CTRL Cables (C1,C2) 18 AWG 0.2 Nm (1.77 lb-in)	
	Drain Cables (C3) 18 AWG 0.2 Nm (1.77 lb-in)	

Copper conductors only, rated max. 75°C.
 Follow NFPA 70 (NEC), or CMA C22.1 part 1, and all local codes.
 For DG Breakers larger than 20A, use wire insulated for 90°C based on 75°C ampacities.
 Designed in California and India. Made in Mexico.

NOTE: CTs that go connected to panel mounting starts on 1

Non terminating nodes - CTRL (CONTROL) Wiring

When IQ System Controller is DG and/or IQ Feeder 90 amp or less, use the following wiring:

- CTRL 1 (BLUE)
- CTRL 2 (ORANGE)
- CTRL 3 (BLACK)
- NOT USED
- DRAIN

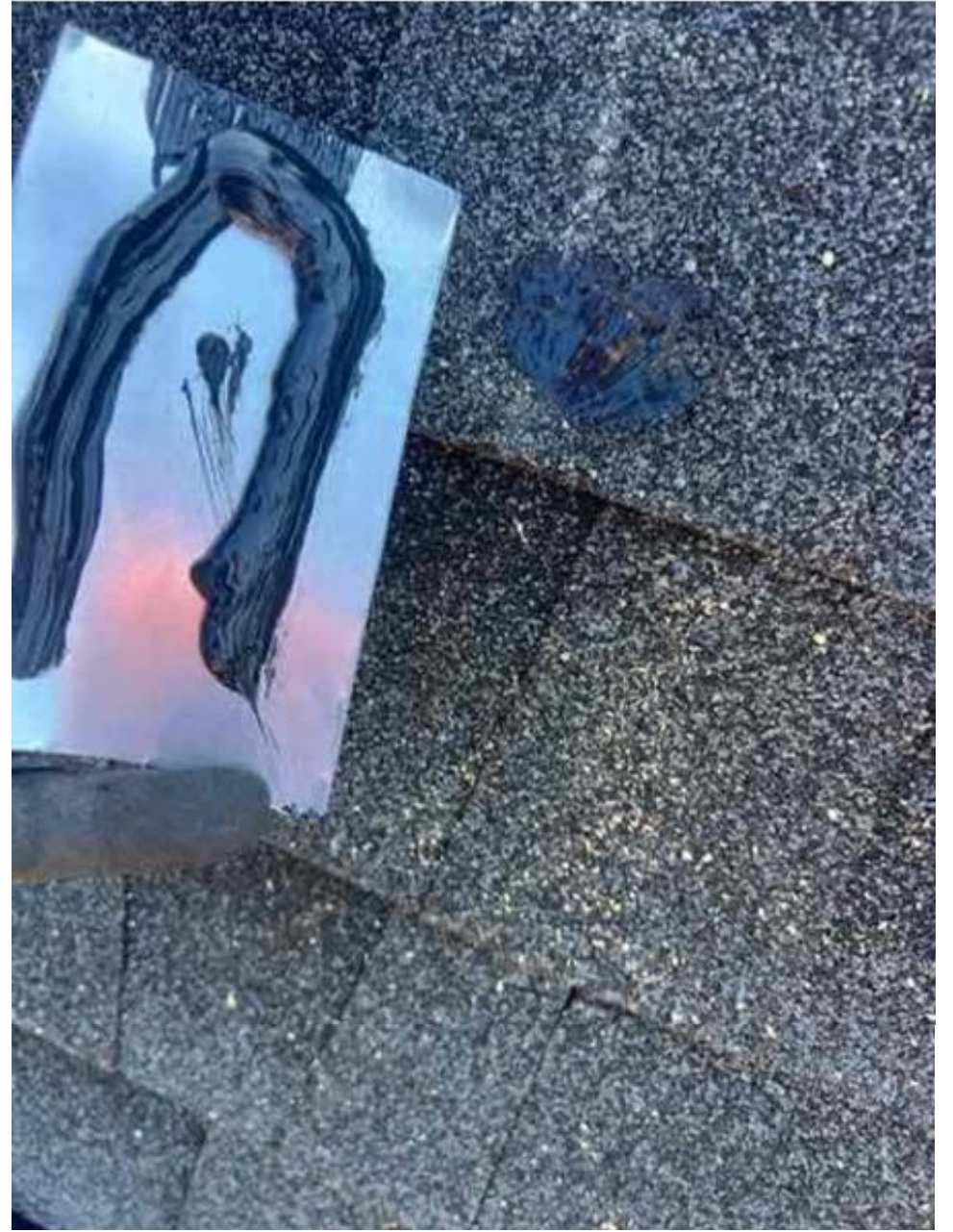


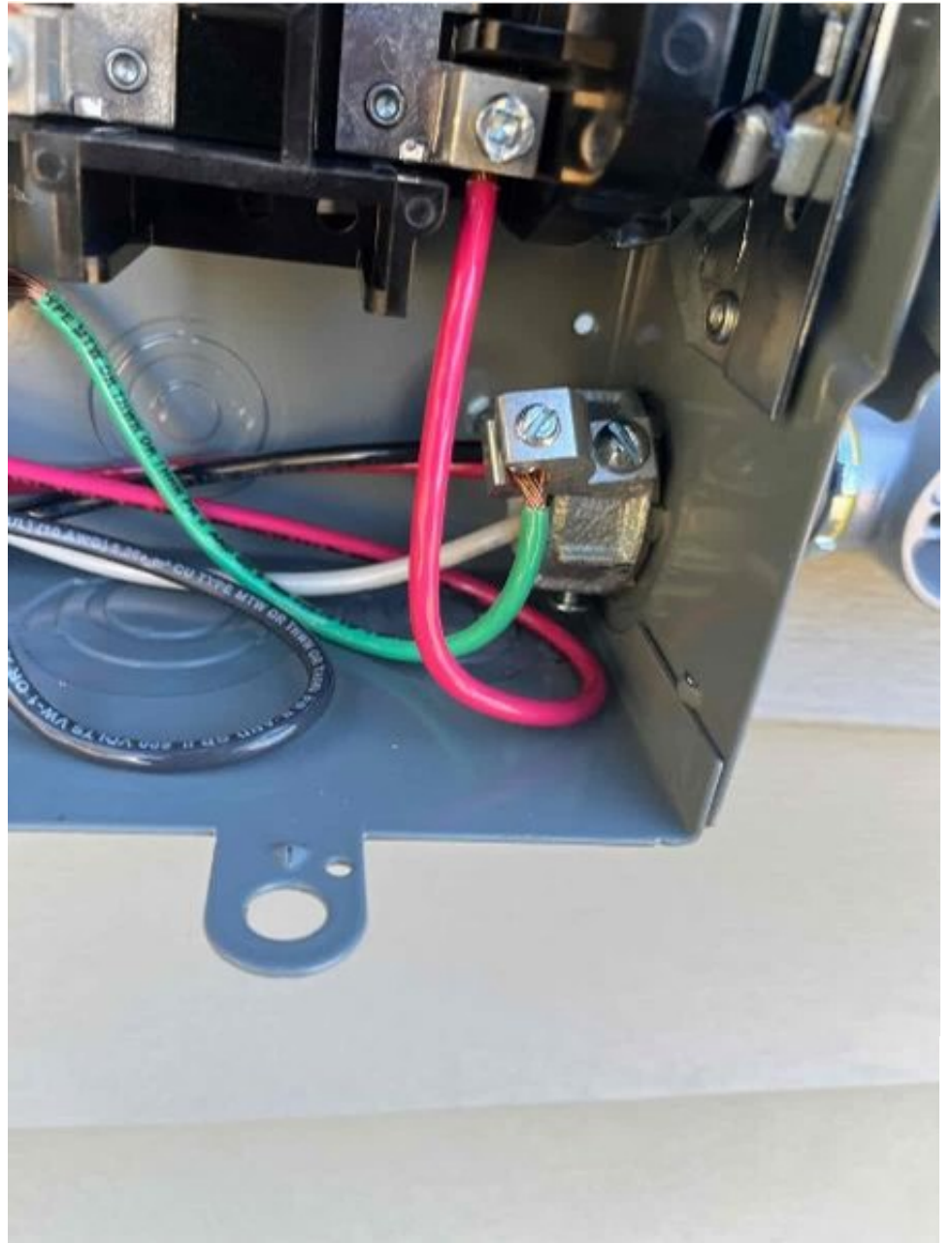


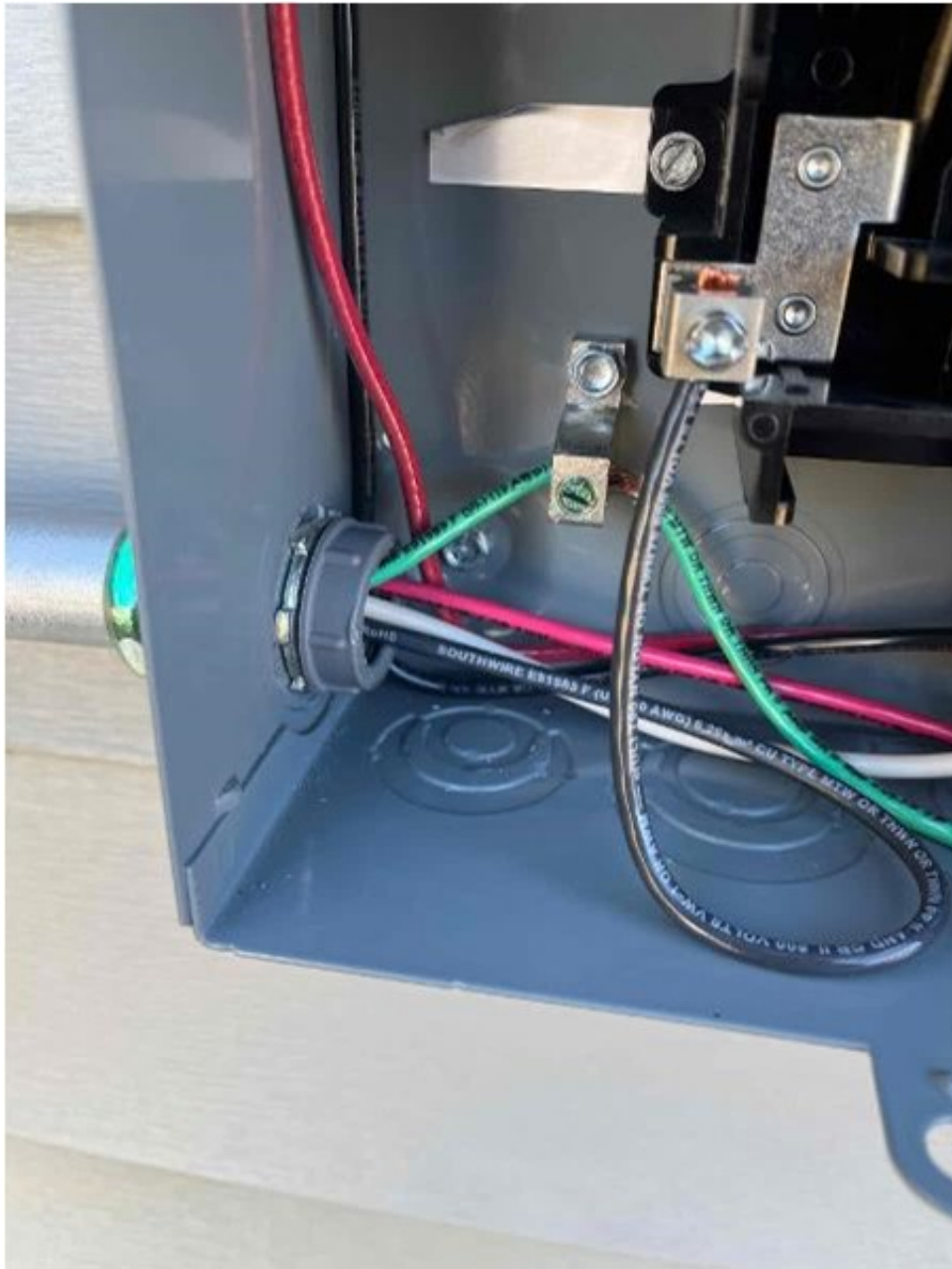


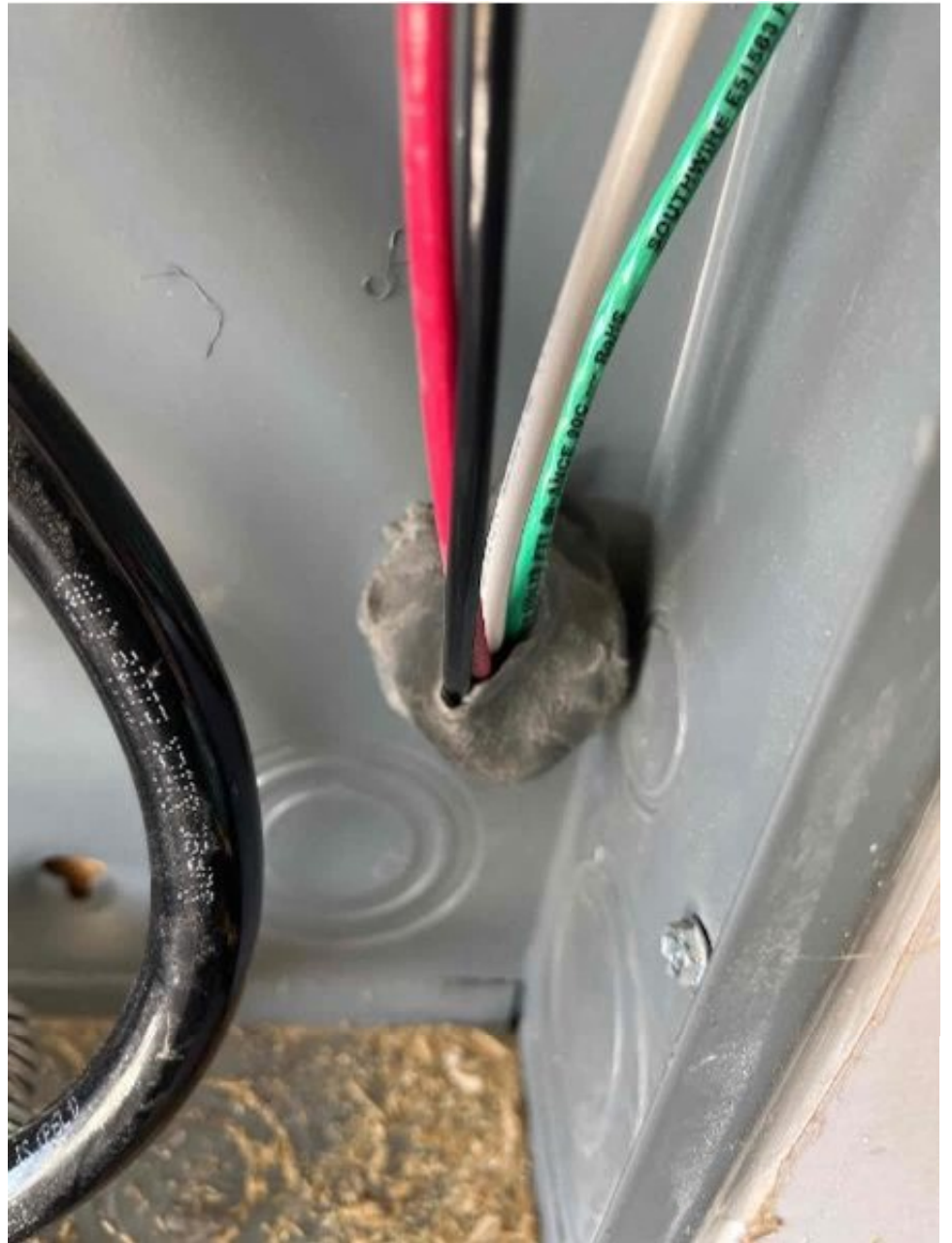


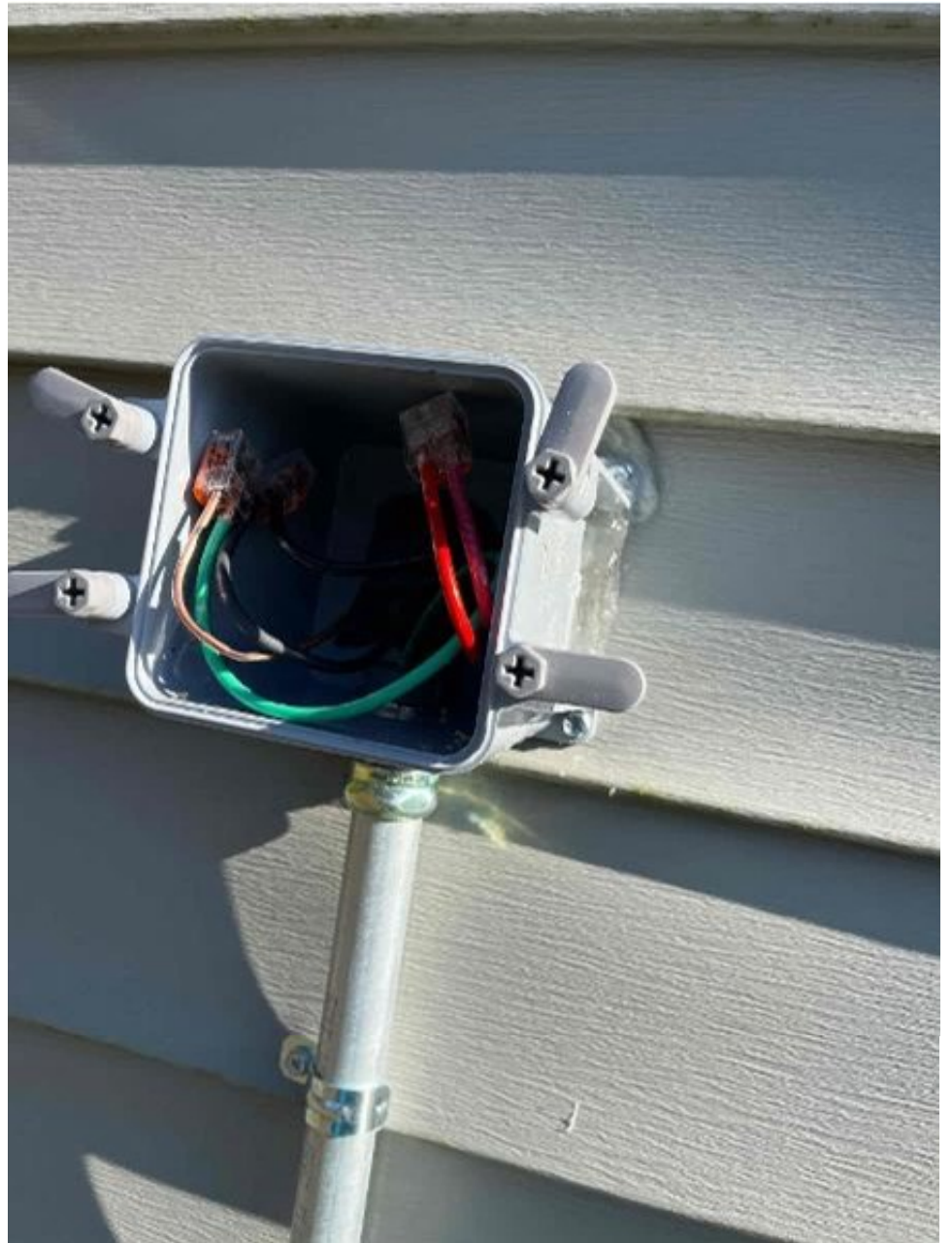




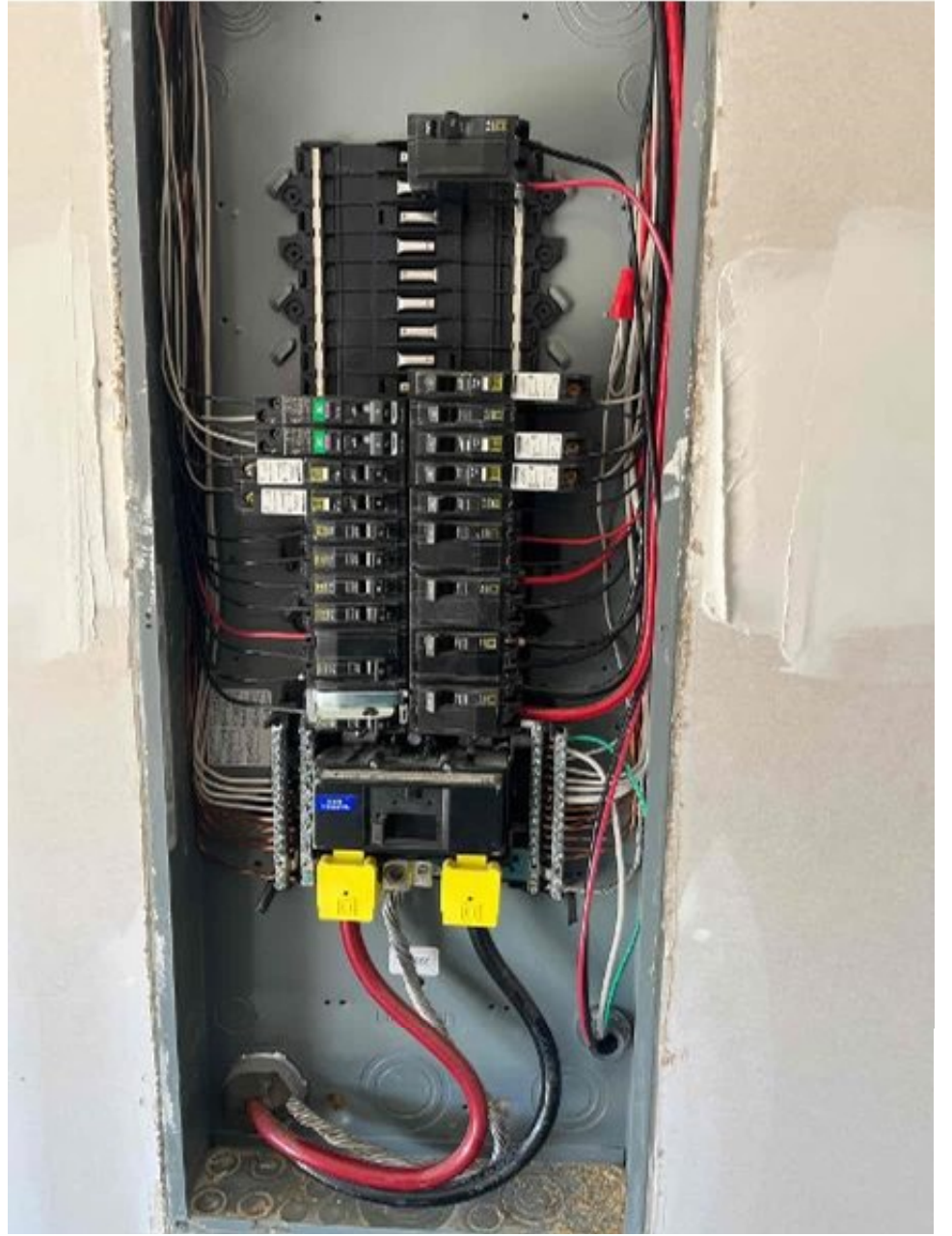






















Designated Competent Person – Fill out this portion of the form

In Case of Emergency, call 911 immediately and proceed to the nearest emergency room.
 For non-emergency injuries, please report the injury to your manager, follow the Injury Standard Operating Procedures – notify managers.

Nearest Urgent Care (circle one)	
Nearest Emergency Room	<input checked="" type="checkbox"/>
Safety Contact	
Additional Notes	

DESY JOHNSON HOSP: 201
800 T. Johnson Dr, Dunn
NC 28834

Workers
 Compensation Provider: Berkshire Hathaway Insurance Companies
 Berkshire Hathaway Address: PO Box 881716, San Francisco CA 94188
 Berkshire Hathaway Fax Number: (800) 661-4084
 Berkshire Hathaway Policy Number: BHW226029 (OH IL) - BHW225818 (all other states)
 Blue Cross Fax Number: (185)-554-426

Report Injury 