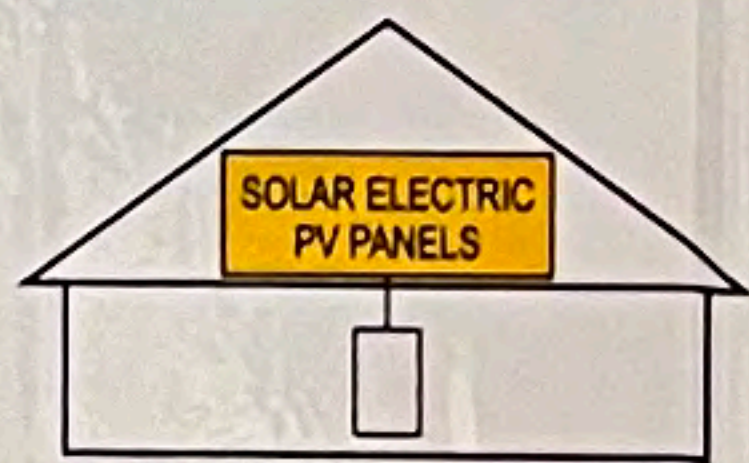






**SOLAR PV SYSTEM
EQUIPPED WITH
RAPID SHUTDOWN**



TURN RAPID SHUTDOWN SWITCH TO THE "OFF" POSITION TO SHUT DOWN PV SYSTEM AND REDUCE SHOCK HAZARD IN THE ARRAY

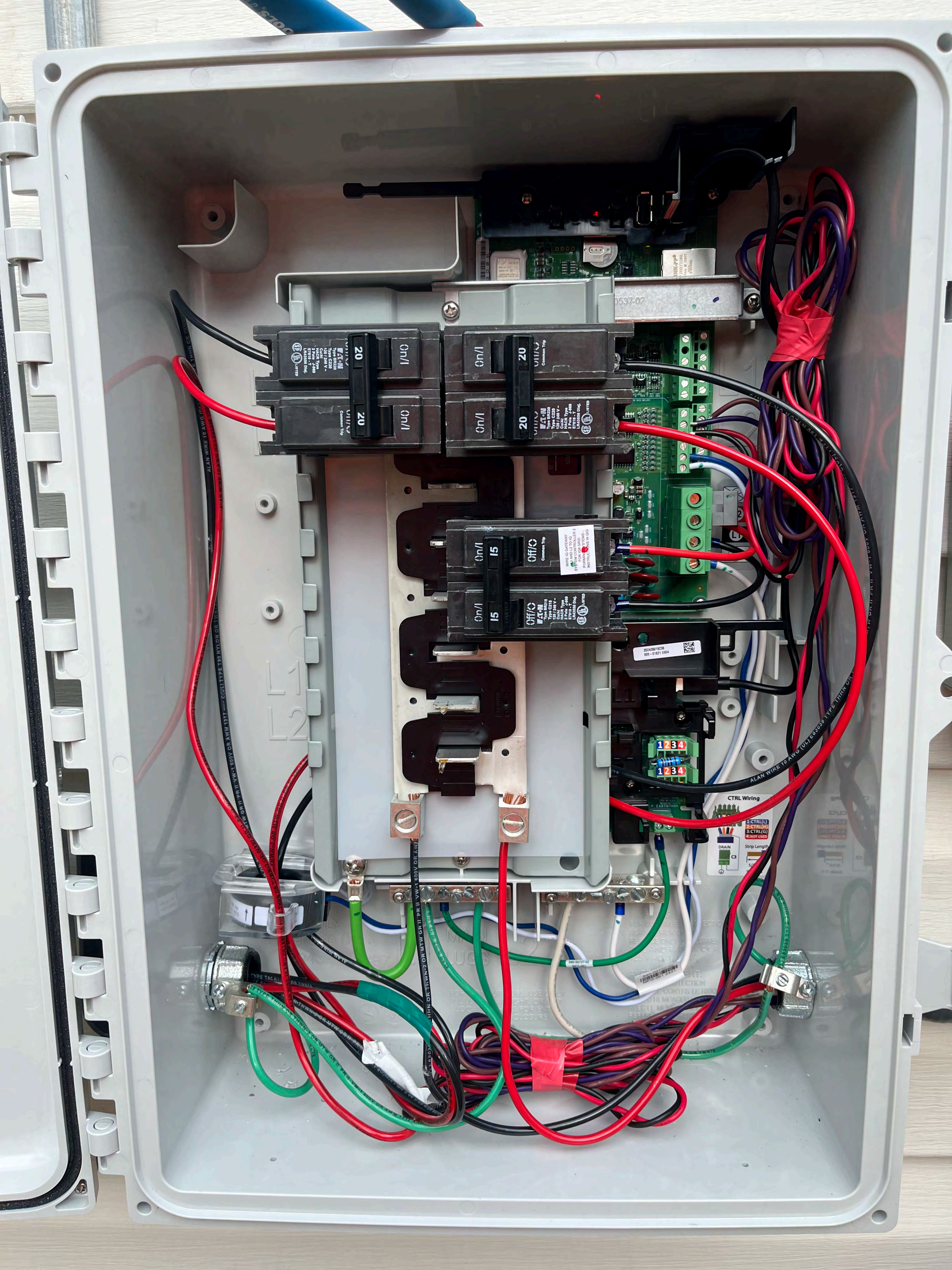
⚠ WARNING

DUAL POWER SUPPLY

SOURCES: UTILITY GRID AND PV SOLAR ELECTRIC SYSTEM

SERVICE DISCONNECT

PV DISCONNECT LOCATED ON EXTERIOR WALL TO LEFT OF METER

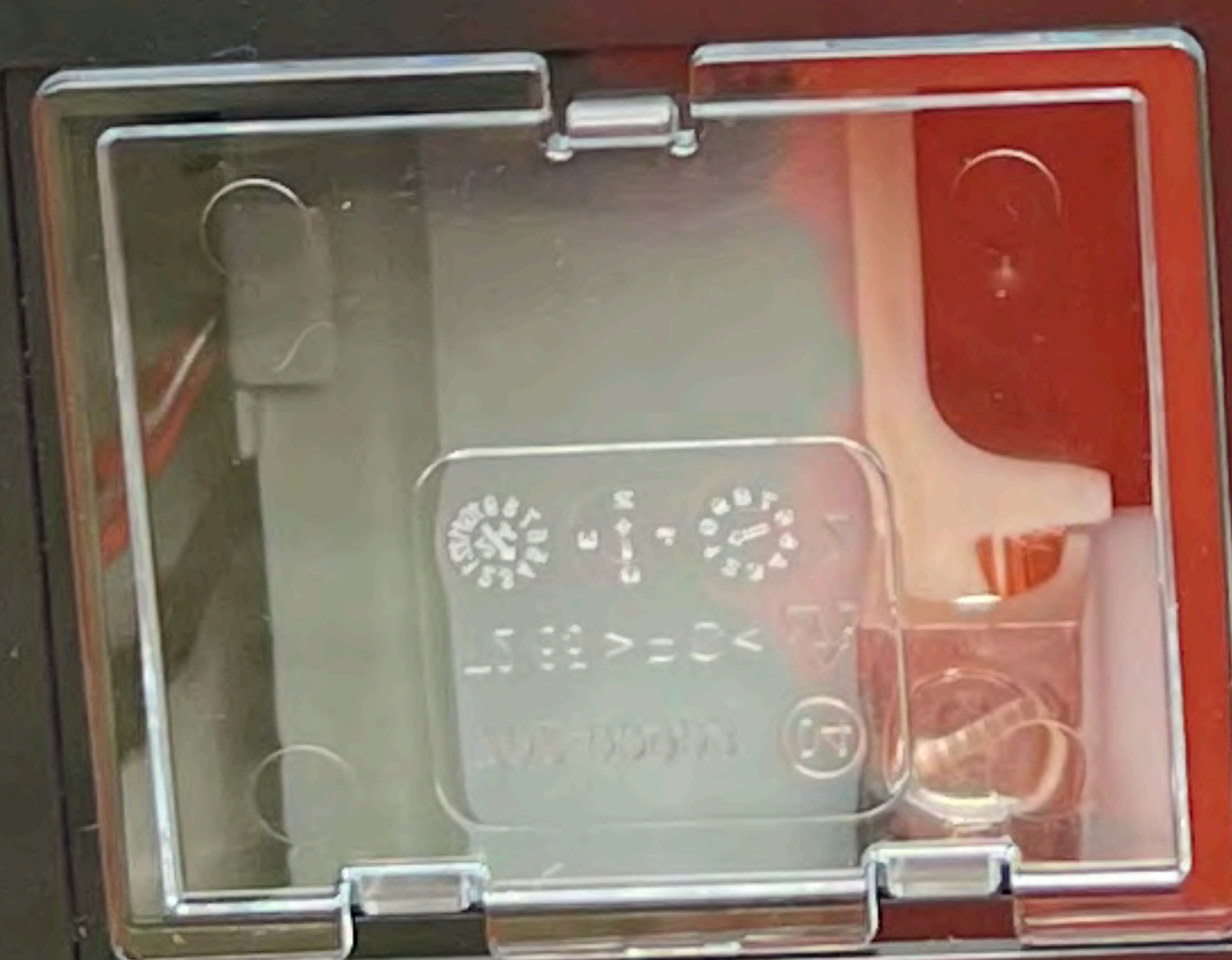


WARNING
INVERTER OUTPUT CONNECTION
DO NOT RELOCATE
THIS OVERCURRENT
DEVICE



WARNING
INVERTER OUTPUT CONNECTION
DO NOT RELOCATE
THIS OVERCURRENT
DEVICE

WARNING
WIRE IQ GATEWAY L1 AND L2 TO
IQ SYSTEM CONTROLLER FOR
IQ8 GRID FORMING SYSTEMS
- INSTRUCTIONS IN IQG



ENVOY

WARNING:
RISK OF ELECTRIC SHOCK. DO NOT REMOVE COVER.
NO USER SERVICEABLE PARTS INSIDE.
REFER SERVICING TO QUALIFIED SERVICE PERSONNEL.
WHEN THE PHOTOVOLTAIC ARRAYS EXPOSED TO LIGHT,
IT SUPPLIES AN AC VOLTAGE TO THIS EQUIPMENT.

AVERTISSEMENT:
RISQUE DE CHOC ELECTRIQUE. NE PAS OUBLIER DE RETENIR LE COUVERCLE.
POUR TOUTE REPARATION OU ENTRETIEN, VOUS DEVEZ CONSULTER UN
CONSTRUCTEUR QUALIFIE EN ELECTRICITE. LORSQUE LES PHOTOVOLTAIQUES
SONT EXPOSEES A LA LUMIERE, ELLES FOURNISSENT UNE TENSION EN
COURANT ALTERNATIF A CE EQUIPEMENT.

WARNING: HIGH VOLTAGE
AVERTISSEMENT: HAUTE TENSION





PHOTOVOLTAIC SYSTEM
⚠️ AC DISCONNECT ⚠️
NEVER OPEN AC VOLTAGE ⚠️
⚠️ WARNING ⚠️
ELECTRIC SHOCK HAZARD
TERMINALS ON THE LINE AND
LOAD SIDES MAY BE ENERGIZED
BY THE OPEN POSITION

ENPHASE

E-T-N SOLAR PV SYSTEM
EQUIPPED WITH
RAPID SHUTDOWN

TURN RAPID SHUTDOWN SWITCH
TO THE "OFF" POSITION TO SHUT DOWN
PV SYSTEM AND REDUCE
SHOCK HAZARD IN THE ARRAY

⚠️ WARNING ⚠️
ELECTRIC SHOCK HAZARD
TERMINALS ON THE LINE AND
LOAD SIDES MAY BE ENERGIZED
BY THE OPEN POSITION

**RAPID SHUTDOWN
SWITCH FOR
SOLAR PV SYSTEM**

⚠️ WARNING ⚠️
DUAL POWER SUPPLY
SOURCE: UTILITY GRID AND
PV SOLAR ELECTRIC SYSTEM

White electrical junction box

Blue and black electrical wires







AFC-KAF-TECH

75°C (165°F) UL-94V-0

SECRET SERVICES

CERTAINTEED
MADE IN USA
03/08/23







SnapNrack

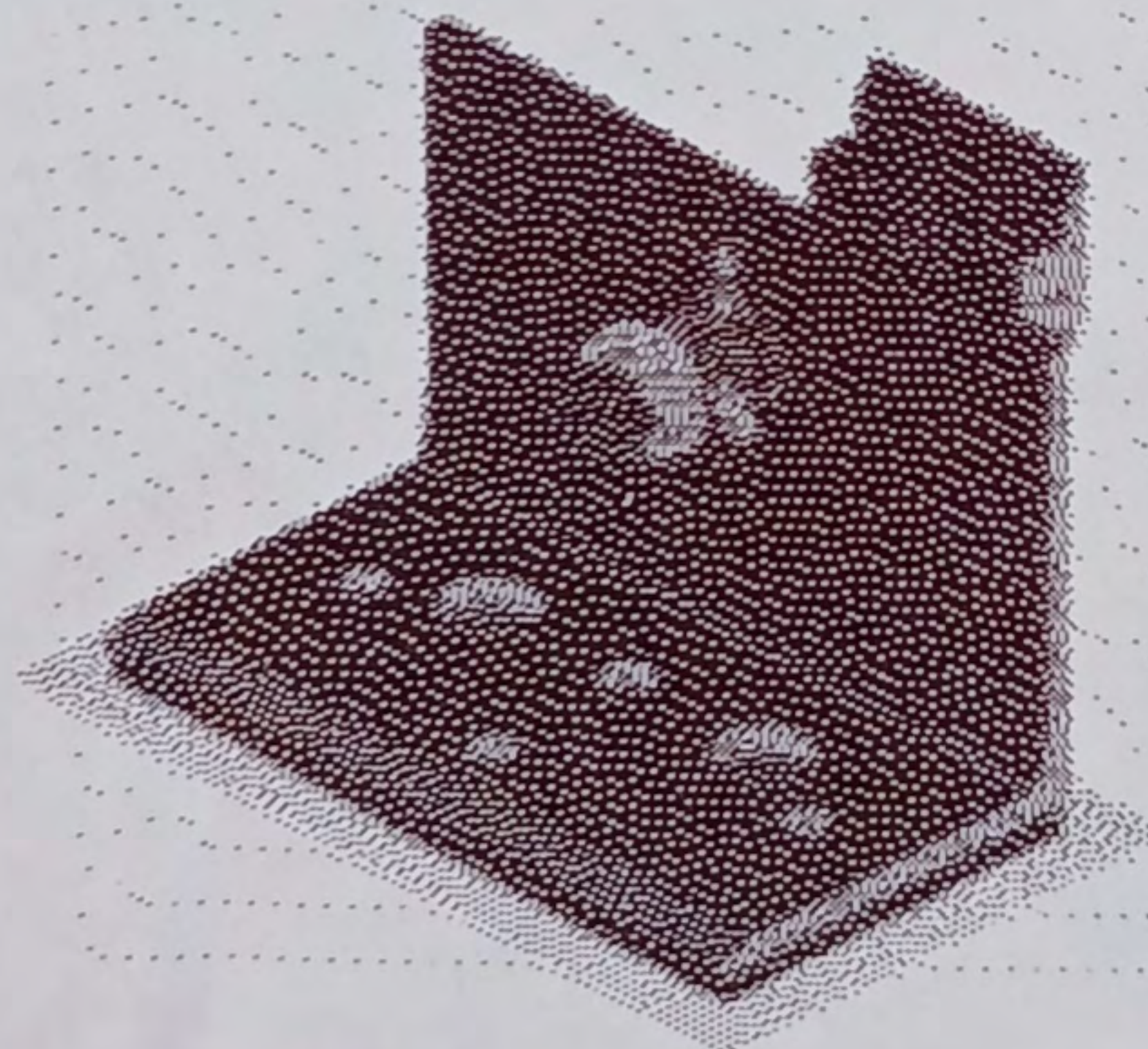


242-10038

www.snapnrack.com
www.snapnrack.com/patent

242-10038

SNAPNRACK,
ULTRA RAIL
ANCHORFOOT



installation-manuals

SnapNrack 775 Fiero Ln.
San Luis Obispo, CA 93401

2532692

10/23/24

QTY : 20

Product of Chihuahua, Mexico



ETP: 1
195282451700002752900280539670110

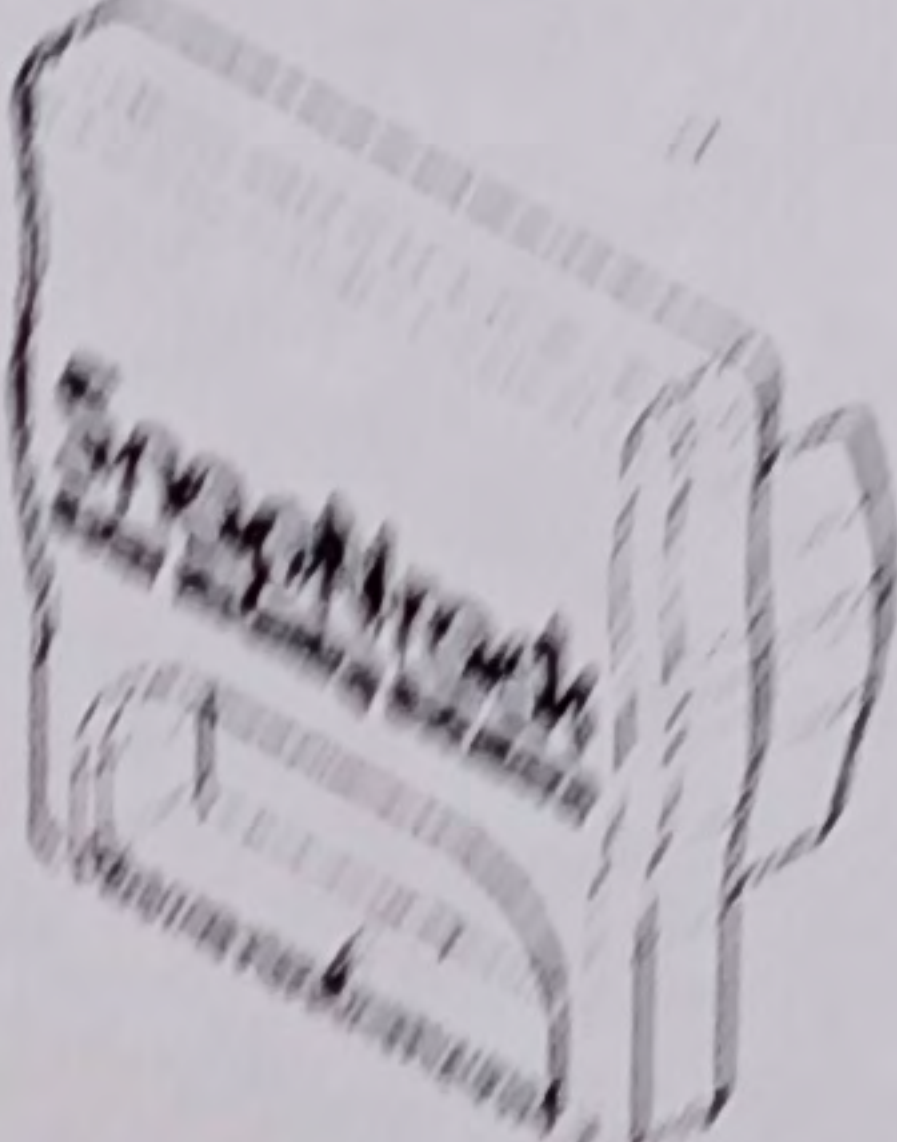
143-1554

SP-PD-100-Y

THE GREENTECH RENEWABLES RALEIGH OFFICE
4900 JONES SAUSAGE RD
GARNER NC
27529-8730

GREENTECH RENEWABLES RALEIGH OFFICE

SnapRack Solar Mounting Solutions www.snapnrack.com	
232-02452 SNAPNRACK, UR-40 END CAP	 <i>Installation manual</i> 122061 2024/08/10 QTY: 120



SnapNrock

www.snapnrock.com

242-02071

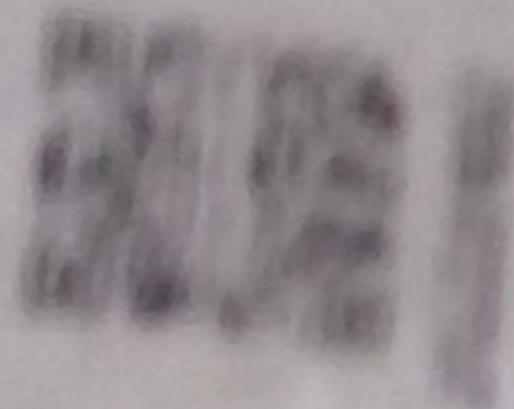
SNAPNROCK, ULTRA
BALL NED CLAMP,
BLACK



LISTED



242-02071



242-02071

2524165

01/17/24

UL

24

Product of Chihuahua, Mexico

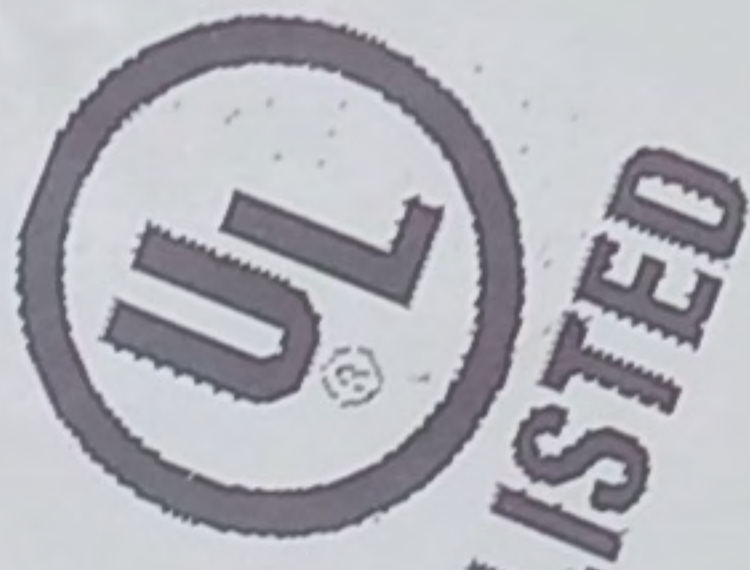
NrockTM

ing Solutions

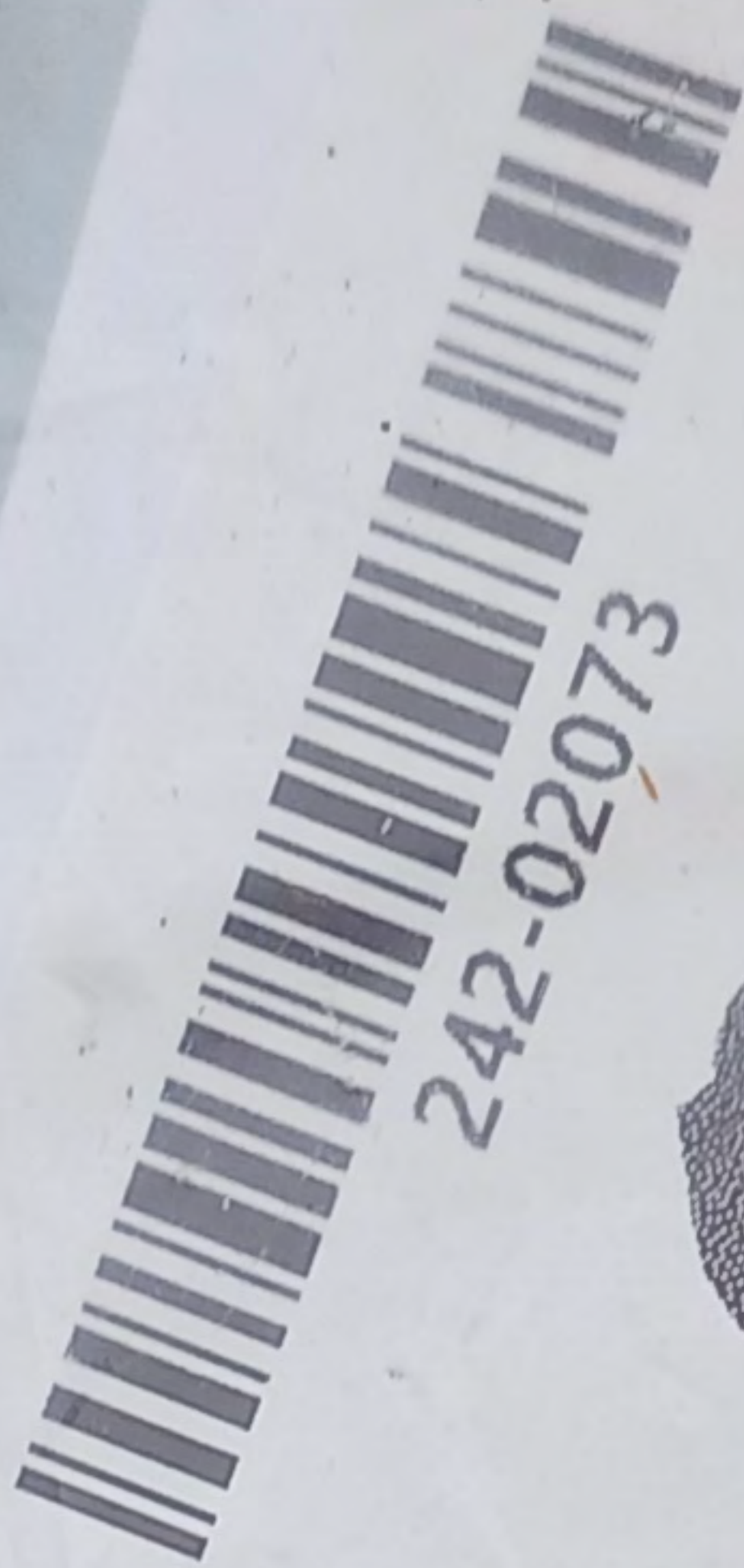
SnapNrack

www.snapnrack.com
www.snapnrack.com/patent

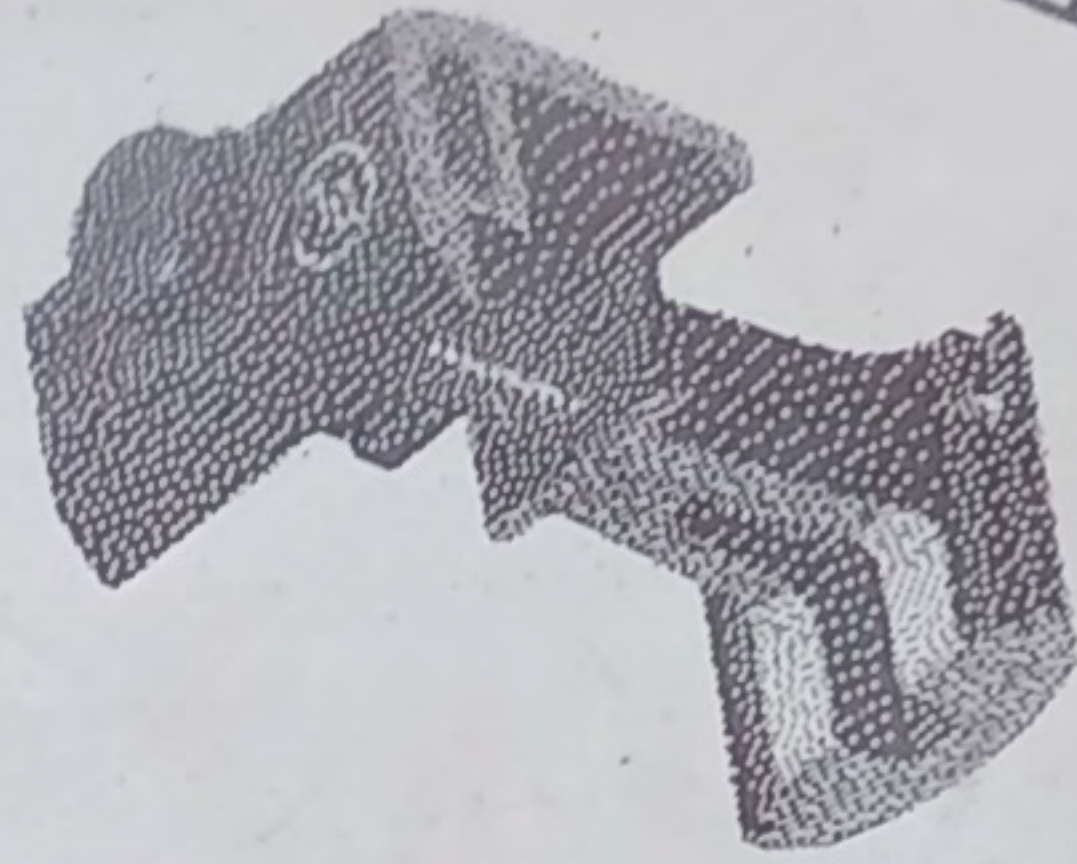
242-02073
SNAPNRACK, ULTRA
RAIL END CLAMP,
BLACK



Product of Chihuahua, Mexico



242-02073



SnapNrack 775 El Paso Ln
San Luis Obispo, CA 93401

2540312
108/16/24
QTY: 20

rack™

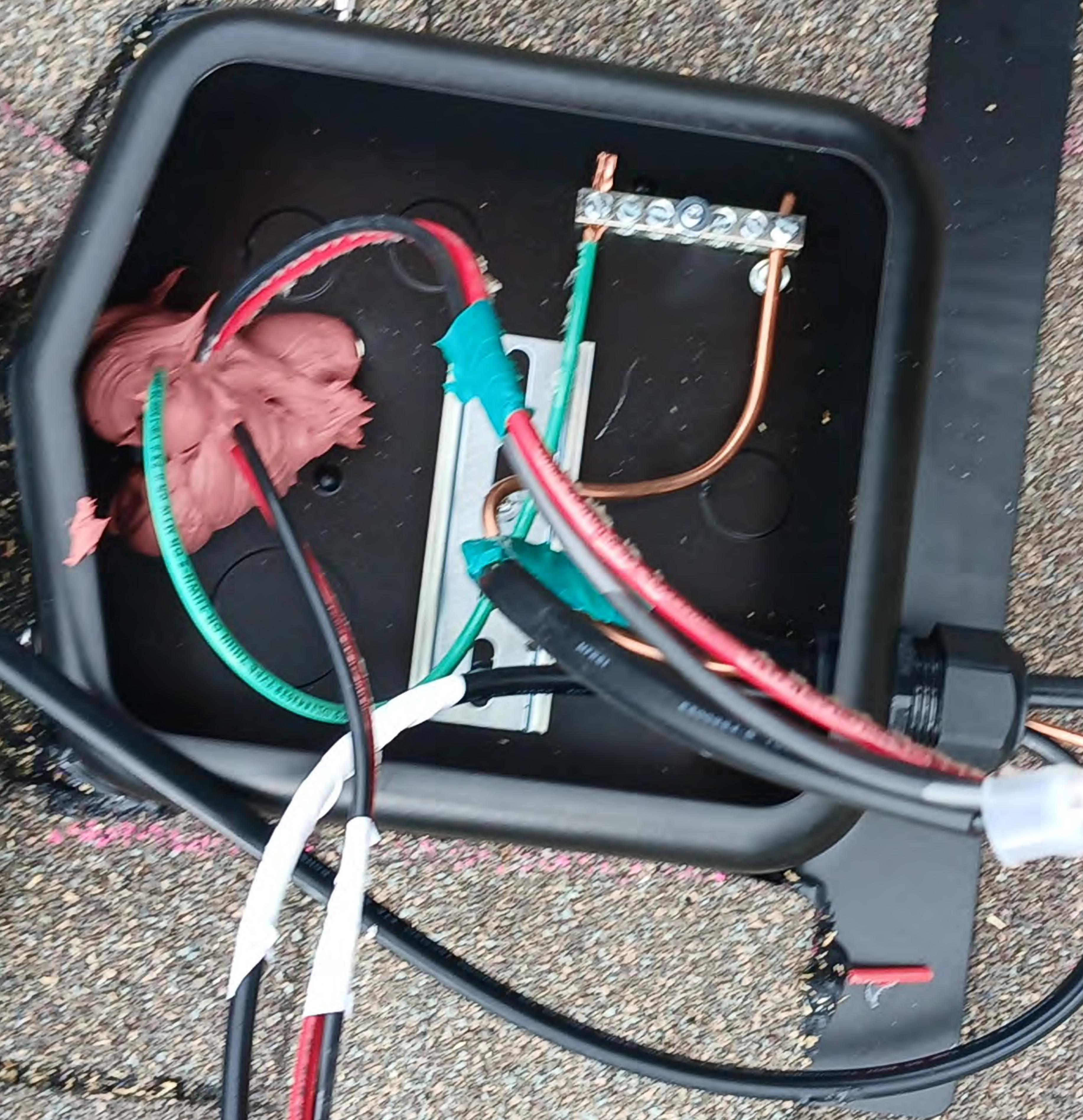
olution







Wk Darisley Rd
Angier NC, 27501





2

FT & IN
INCHES

3

4

25FT

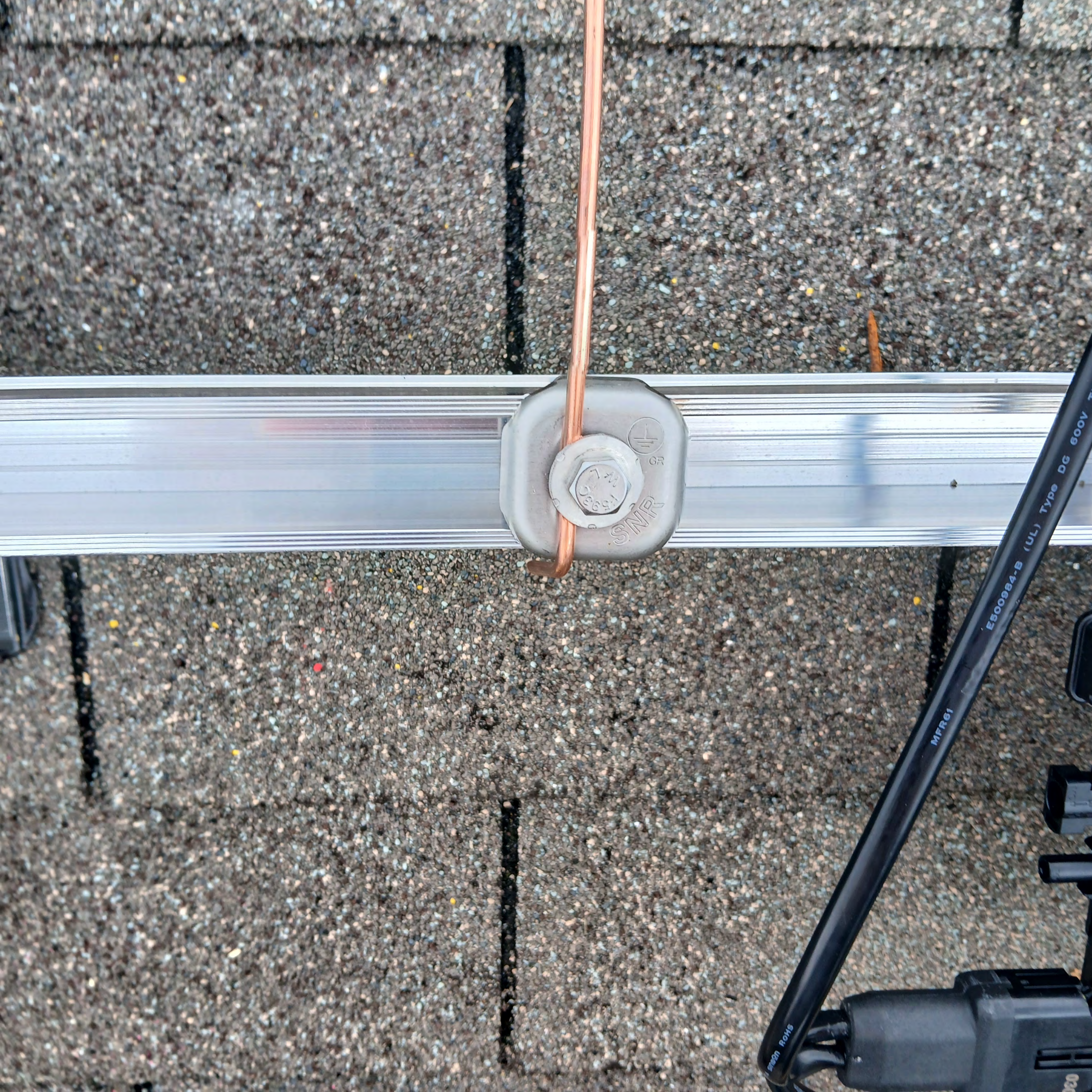
5

6

UL Type DG 600V THHN/TW







SNR

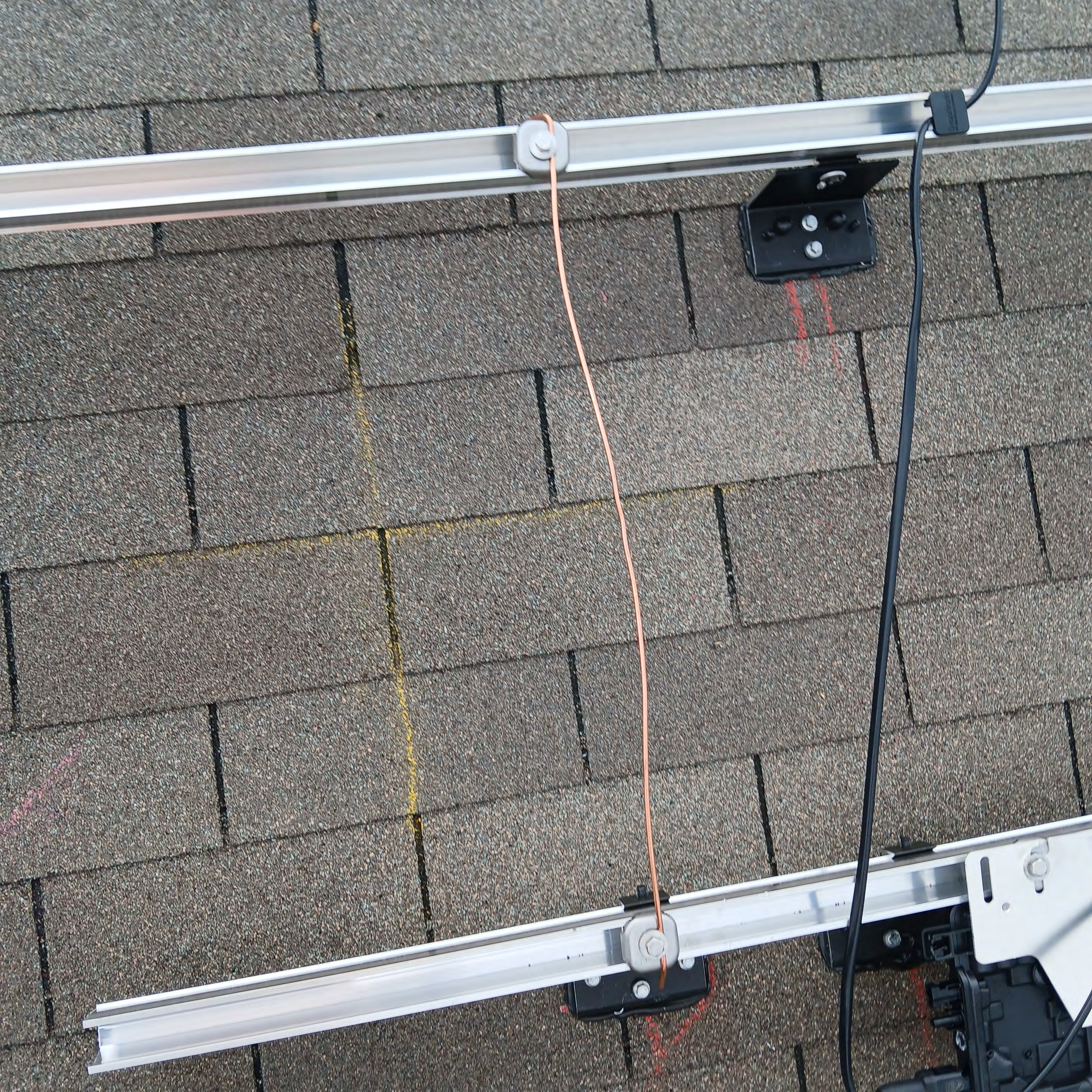
GR

MFR61

E500984-B (UL) TYPE DG 600V

RoHS







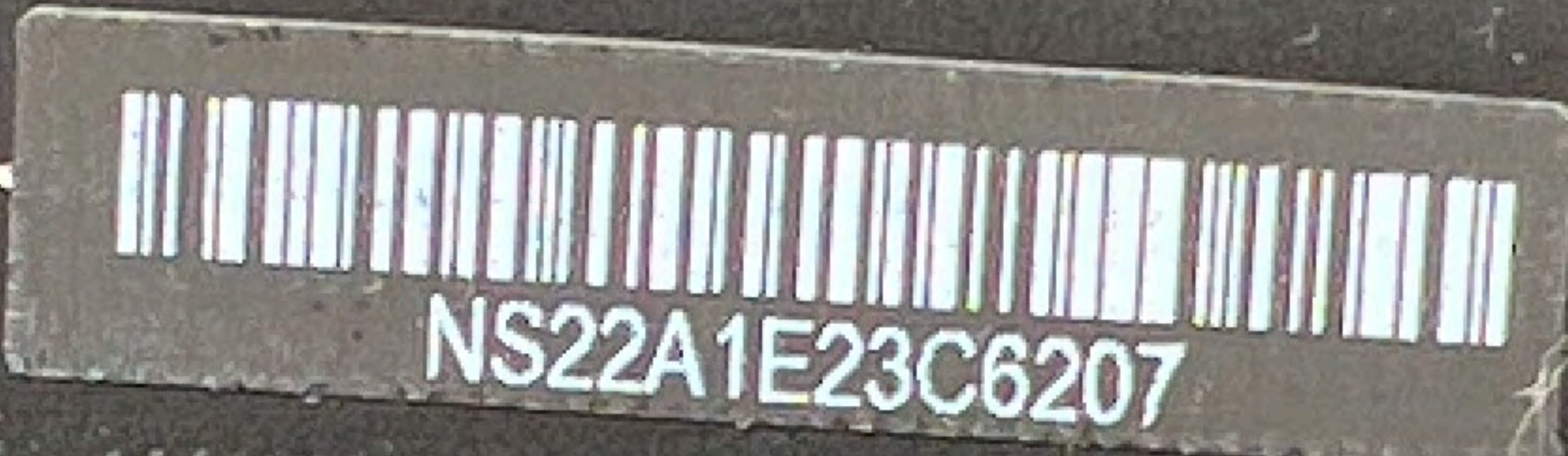
SN:482435016933 TAN:885-01374

IQ8PLUS-72-M-US

885-01374 10

482435016933

232



CertainTeed
SAINT-GOBAIN

MODEL TYPE : CT370HC11-06 Made in Indonesia

Nominal Maximum Power	(Pmax):	370W
Maximum operating Voltage	(Vmp):	34.40V
Maximum operating Current	(Imp):	10.76A
Open Circuit Voltage	(Voc):	41.90V
Short Circuit Current	(Isc):	11.29A
Maximum System Voltage	:	1500V
Maximum Series Fuse Rating	:	20A

All electrical data at Standart Test Conditions (STC): Irradiance of 1000W/m², spectrum AM1.5 and temperature of 25°C.

Fire Rating: CLASS C / TYPE I
Protection Class: CLASS II

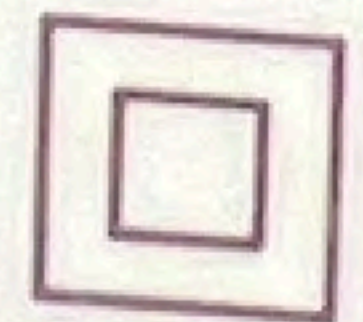
WARNING - ELECTRIC HAZARD



This solar module produces electrical voltage when exposed to sunlight or intense artificial lights. Proper precautions associated with electrical power systems must be taken while handling and installing this product.

PLEASE READ THE INSTRUCTION MANUAL FOR MORE INFORMATION PRIOR TO INSTALLATION.

Certain Teed limited Warranty is valid only for products purchased either directly from Certain Teed or from an authorized reseller who is in your region or authorized with written permission from Certain Teed.



Conforms to UL STD.
UL61730-1/-2
UL61218-1/-1/-1A2
Certified to CSA STD.
C22.2 #61730-1A2

20 Moores Rd. Malvern, PA 19355
TEL: 1-800-233-8990

232

NS22A1E23C6207

CertainTeed
SUN-GOALS


MODEL TYPE : CT370HC11-06 Made in Indonesia

Nominal Maximum Power	(Pmax):	370W
Maximum operating Voltage	(Vmp):	34.40V
Open Circuit Voltage	(Voc):	41.90V
Short Circuit Current	(Isc):	11.25A
Maximum System Voltage	(Uoc):	1500V
Maximum Series Fuse Rating		20A

All electrical data at Standard Test Conditions (STC) Irradiance of 1000W/m², spectrum AM1.5 and temperature of 25°C.




Fire Rating: CLASS OF TYPE I
Protection Class: CLASS II

WARNING - ELECTRIC HAZARD

 This solar module produces electrical voltage when exposed to sunlight or intense artificial lights. Proper precautions associated with electrical power systems must be taken while handling and installing this product.

PLEASE READ THE INSTRUCTION MANUAL FOR MORE INFORMATION PRIOR TO INSTALLATION.

Certain Teed Limited Warranty is valid only for products purchased either directly from Certain Teed or from an authorized reseller who is in your region or authorized with written permission from Certain Teed.

CE   

Manufactured in China
Certified by ETL
Certification No. 1111
ETL 1-888-234-6287