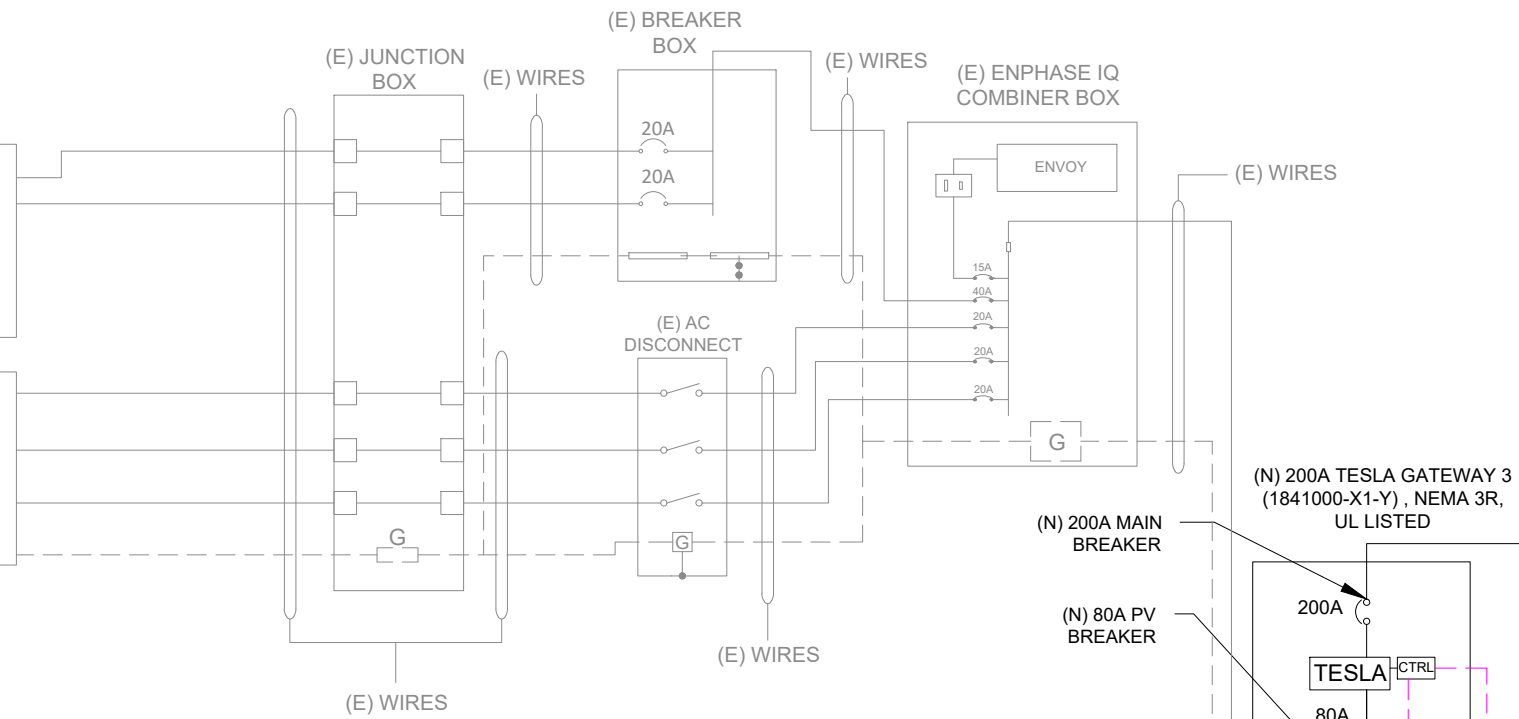


EXISTING SYSTEM SUMMARY:

(E) 18 - SILFAB SOLAR SLA-M (310W) MODULES WITH (E) 18 - ENPHASE ENERGY IQ8PLUS-72-2-US MICRO-INVERTERS

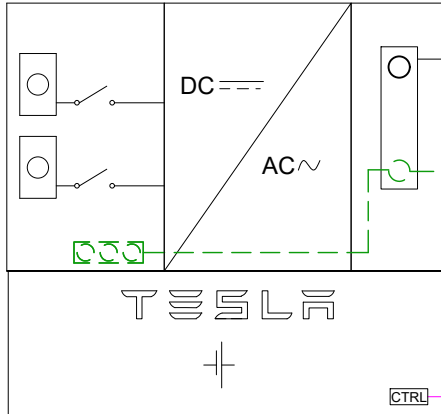
(E) 30 - SILFAB SOLAR SLA-M (310W) MODULES WITH (E) 30 - ENPHASE ENERGY IQ8PLUS-72-2-US MICRO-INVERTERS



SERVICE INFO.	
UTILITY PROVIDER:	N/A
MAIN SERVICE VOLTAGE:	240V
MAIN PANEL BRAND:	N/A
MAIN SERVICE PANEL:	(E) 200A
MAIN CIRCUIT BREAKER RATING:	(E) 200A
MAIN SERVICE LOCATION:	SOUTH-WEST
SERVICE FEED SOURCE:	OVERHEAD

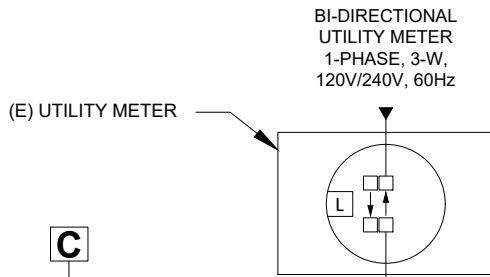
AMBIENT TEMPERATURE SPECIFICATIONS				
RECORD LOW TEMP	AMBIENT TEMP (HIGH TEMP 2%)	CONDUIT HEIGHT	CONDUCTOR TEMPERATURE RATE (ON ROOF)	CONDUCTOR TEMPERATURE RATE (OFF ROOF)
-10°	35°	7/8"	90°	75°

(N) TESLA POWERWALL 3 1707000-XX-Y INVERTER + BATTERY (240V) OUTPUT: 11.5 KWAC, 48A 97.5% SOLAR TO HOME/GRID EFFICIENCY, NEMA 3R, UL LISTED, NOMINAL BATTERY ENERGY 13.5 KWH AC 2 MAXIMUM CONTINUOUS DISCHARGE POWER 11.5 KW AC



(N) AC DISCONNECT 60A NON FUSED, 240 VAC

(2) [24-16]AWG THWN-2 COMMUNICATION WITH POWERWALL



VERSION		
DESCRIPTION	DATE	REV
INITIAL RELEASE	10/01/2024	UR

PROJECT NAME
KASPER, KAREN
494 HOBSON RD,
DUNN, NC 28334, USA
APN# 021518013202
UTILITY: N/A
AHJ: HARNETT COUNTY

Wire Tag	Conduit	Wire Qty	Wire Gauge	Wire Type	Temp. Rating	Wire Ampacity (A)	Temp. Derate	Conduit Fill Derate	Derated Ampacity (A)	NOC (A)	NEC Correction	Design Current (A)	Ground Size	Ground Wire Type
A	3/4" EMT	3+G	6 AWG	THWN	75°C	65	0.94	1.0	61.10	48	1.25	60.00	10 AWG	THWN
B	2" EMT	3+G	4/0 AWG	THWN	75°C	230	0.94	1.0	216.20	-	-	200.00	6 AWG	THWN
C	2" EMT	3	4/0 AWG	THWN	75°C	230	0.94	1.0	216.20	-	-	200.00	-	-

1 ELECTRICAL LINE DIAGRAM WITH WIRE CALCULATION
SCALE: NTS

SHEET NAME ELECTRICAL LINE DIAGRAM WITH WIRE CALCULATION
SHEET SIZE ANSI B 11" X 17"
SHEET NUMBER PV-3