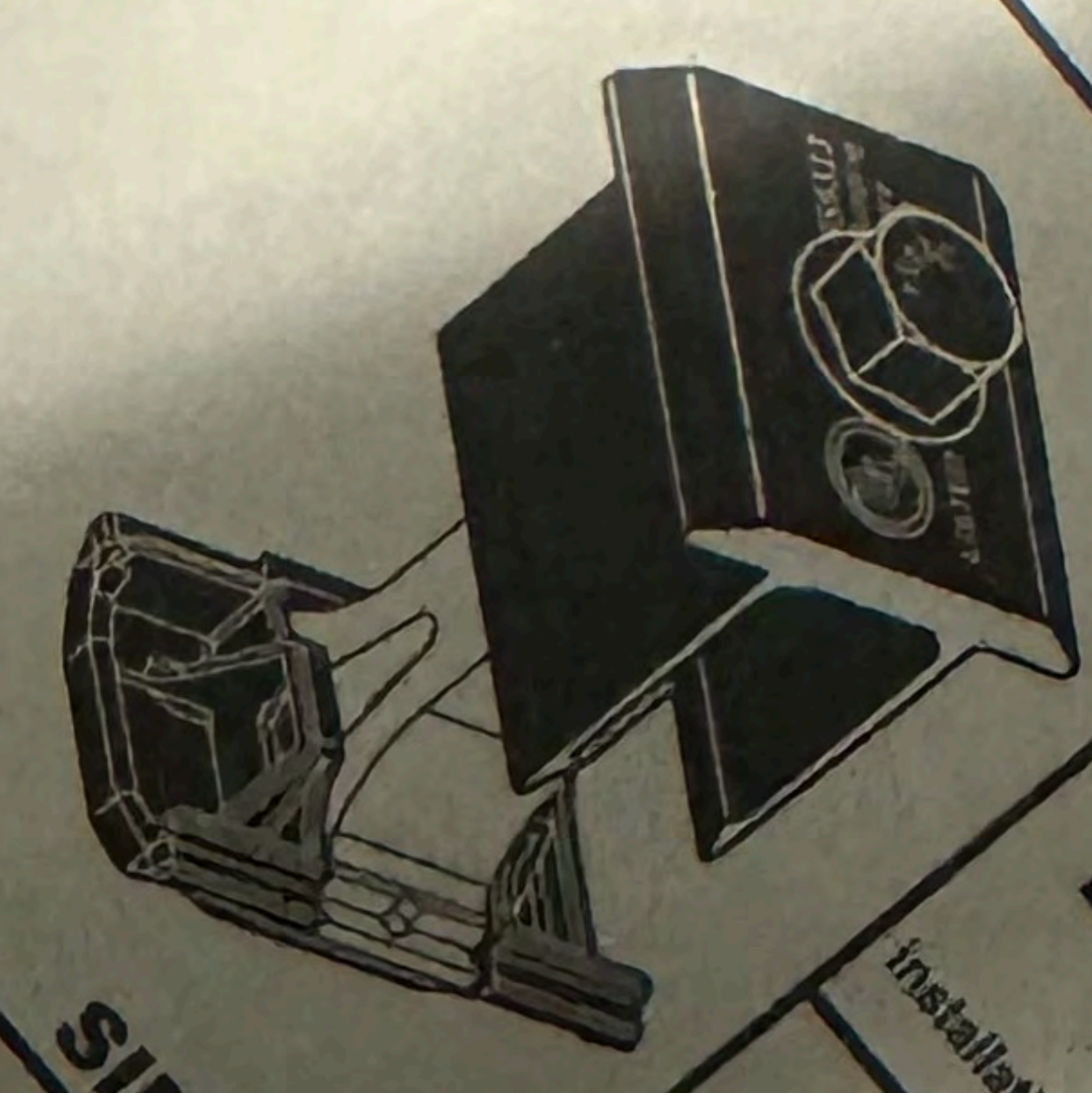


SnapNrack®

SnapNrack
Solar Mounting Solutions

www.snapnrack.com

242-02071
SNAPNRACK,
ULTRA RAIL
MID CLAMP,
BLACK



SID0413

09/02/24

QTY:20

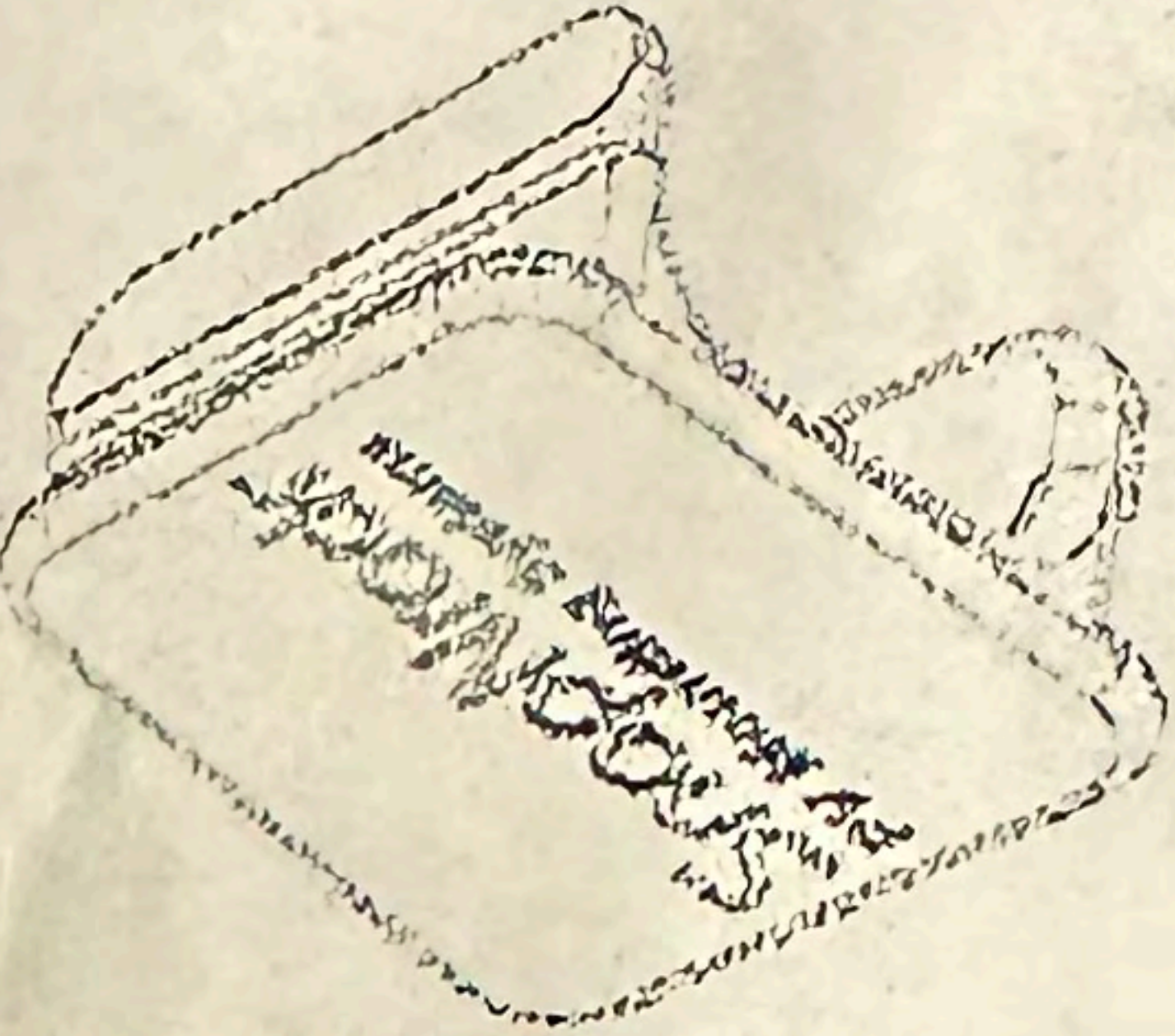


Installation manuals




SnapRack
Solar Mounting Solutions
www.snaprack.com

232-01106
SnapRack,
SNAP-IN WIRE
RETENTION CLIP

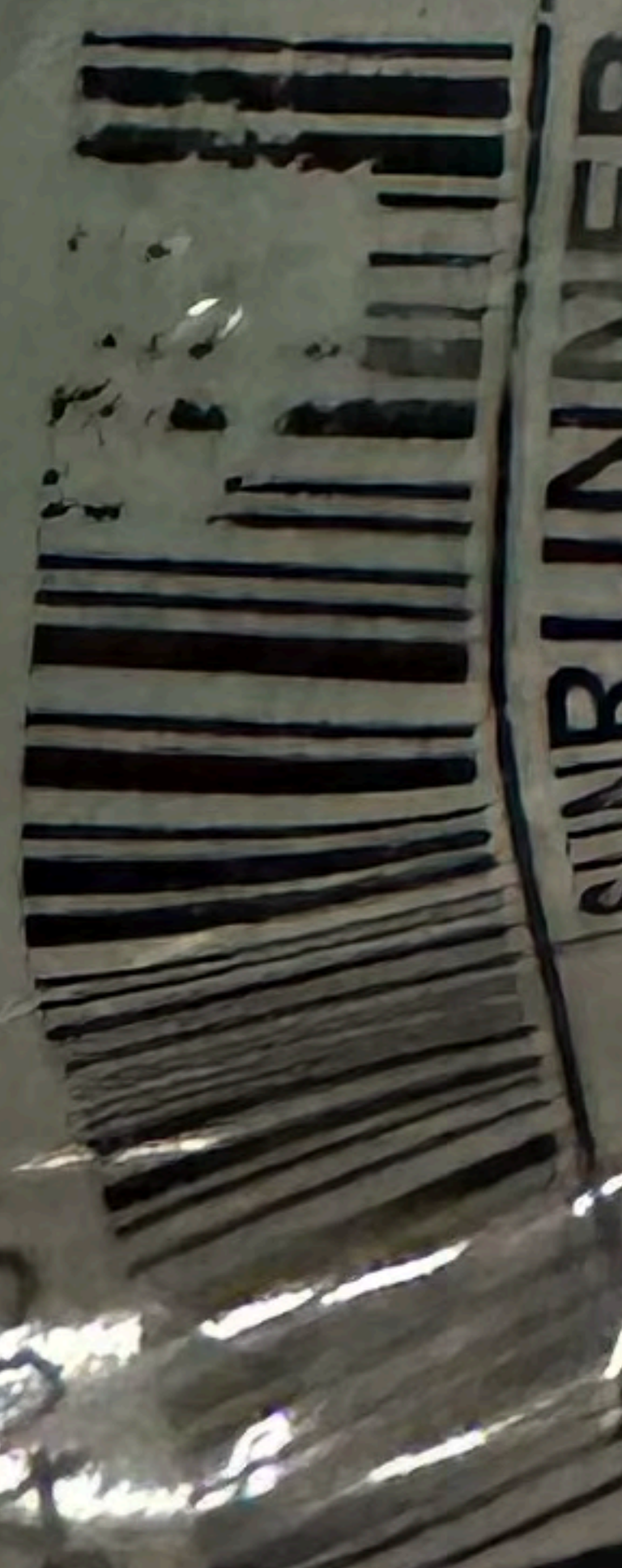


QTY: 20

installation manual



100



SUNRUNNER CLIP 100BAG



4UZ9

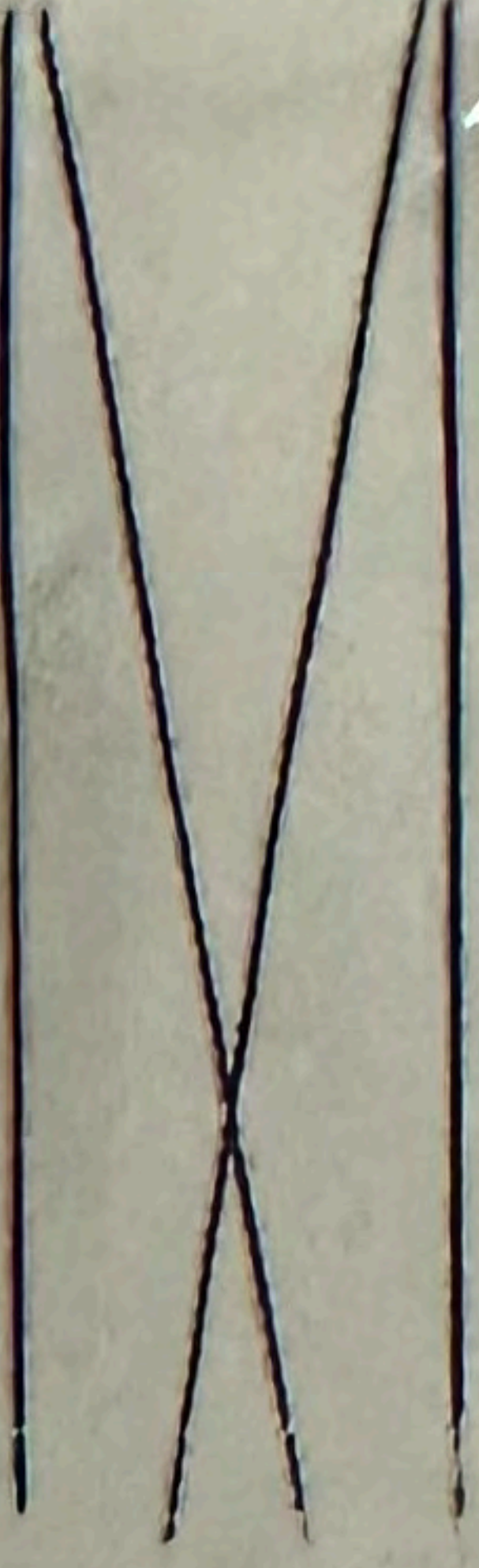
POSITIONING DEVICE

MAXIMUM TILT ANGLE 30° DEG
SUITABLE FOR INDOOR AND OUTDOOR USE
SUITABLE FOR USE WITH 1 OR 2 PV CABLES

MAX. CABLE OD 5.0MM TO 7.6MM

2474337

LCI (T)



000008054



Product of: US

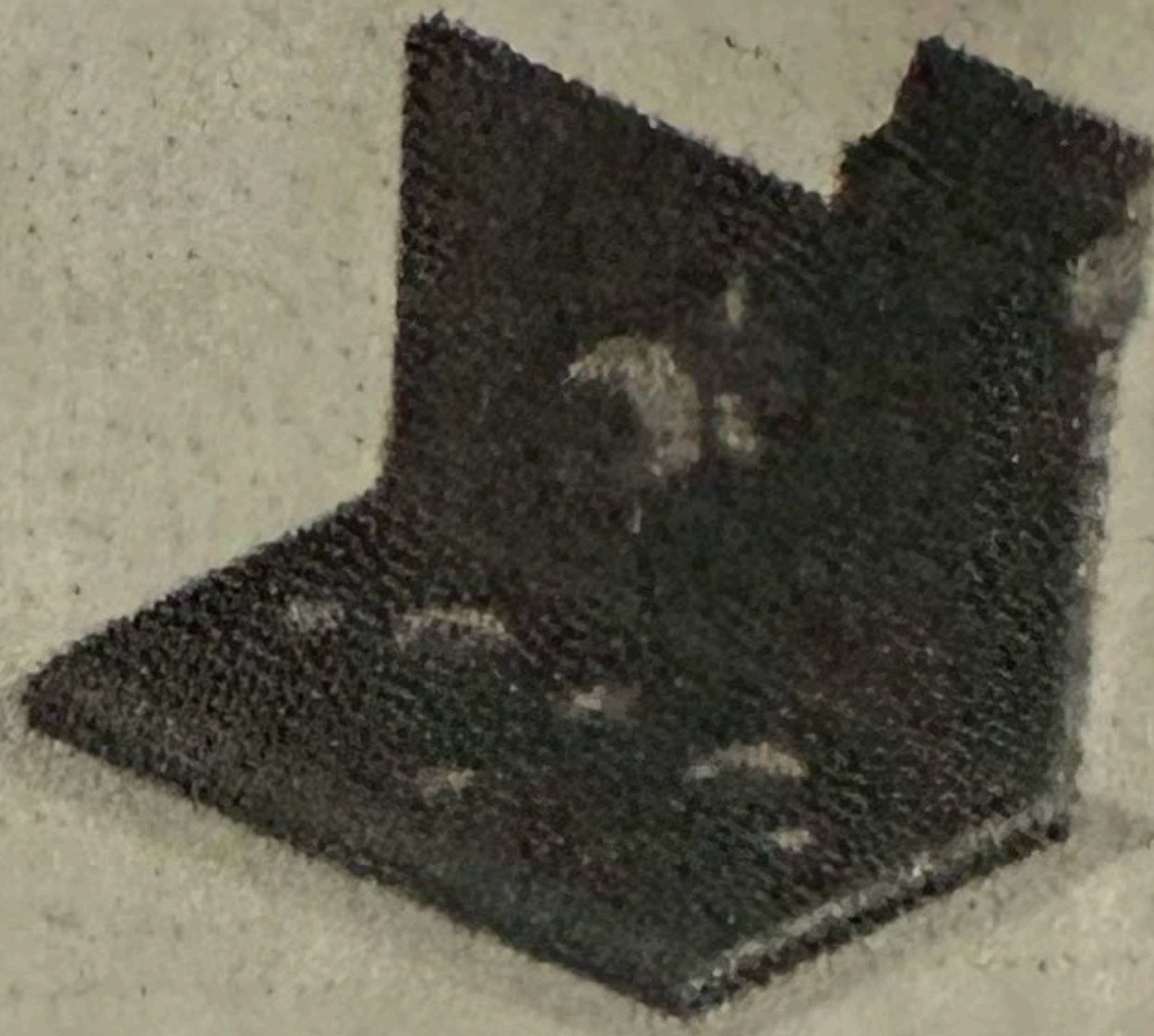
Print Date 01/13/25

SnapNrackSM

www.snapnrack.com
www.snapnrack.com/patent

242-10038

SNAPNRACK,
ULTRA RAIL
ANCHORFOOT



Product of Chihuahua, Mexico



242-10038



installation-manual

12/23/24

WO 256312

PALLET QTY
1600



1600

BOX QTY
20



20

SnapNrack

www.snapnrack.com
www.snapnrack.com/patent

242-10038

SNAPNRACK,
ULTRA RAIL
ANCHORFOOT



242-10038



12/23/24

WO 2563123

PALLET QTY
1600



1600



WARNING: PHOTOVOLTAIC
POWER SOURCE

0385514
0385514

0385514



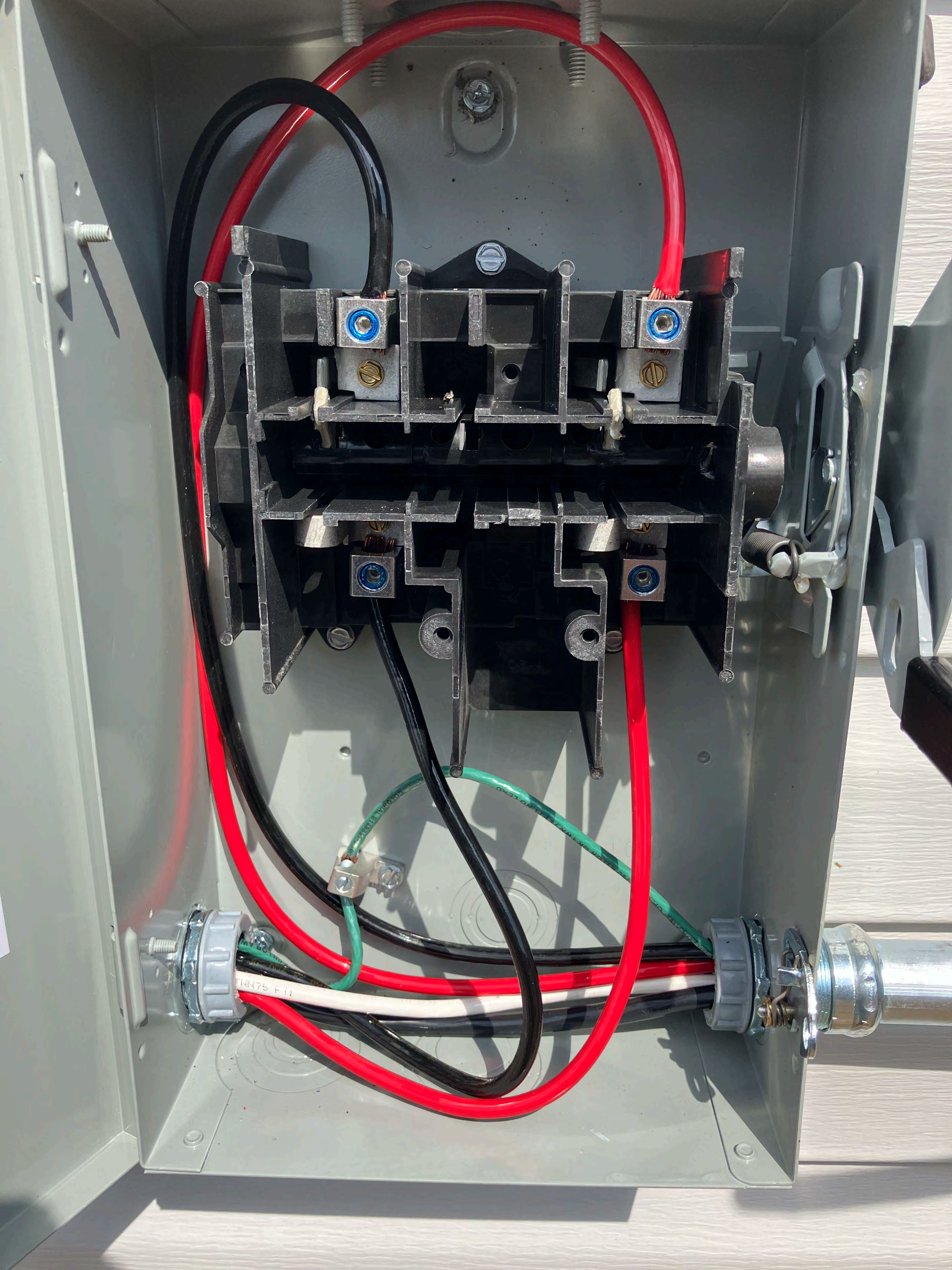


WARNING: PHOTOVOLTAIC
POWER SOURCE

**WARNING: PHOTOVOLTAIC
POWER SOURCE**



















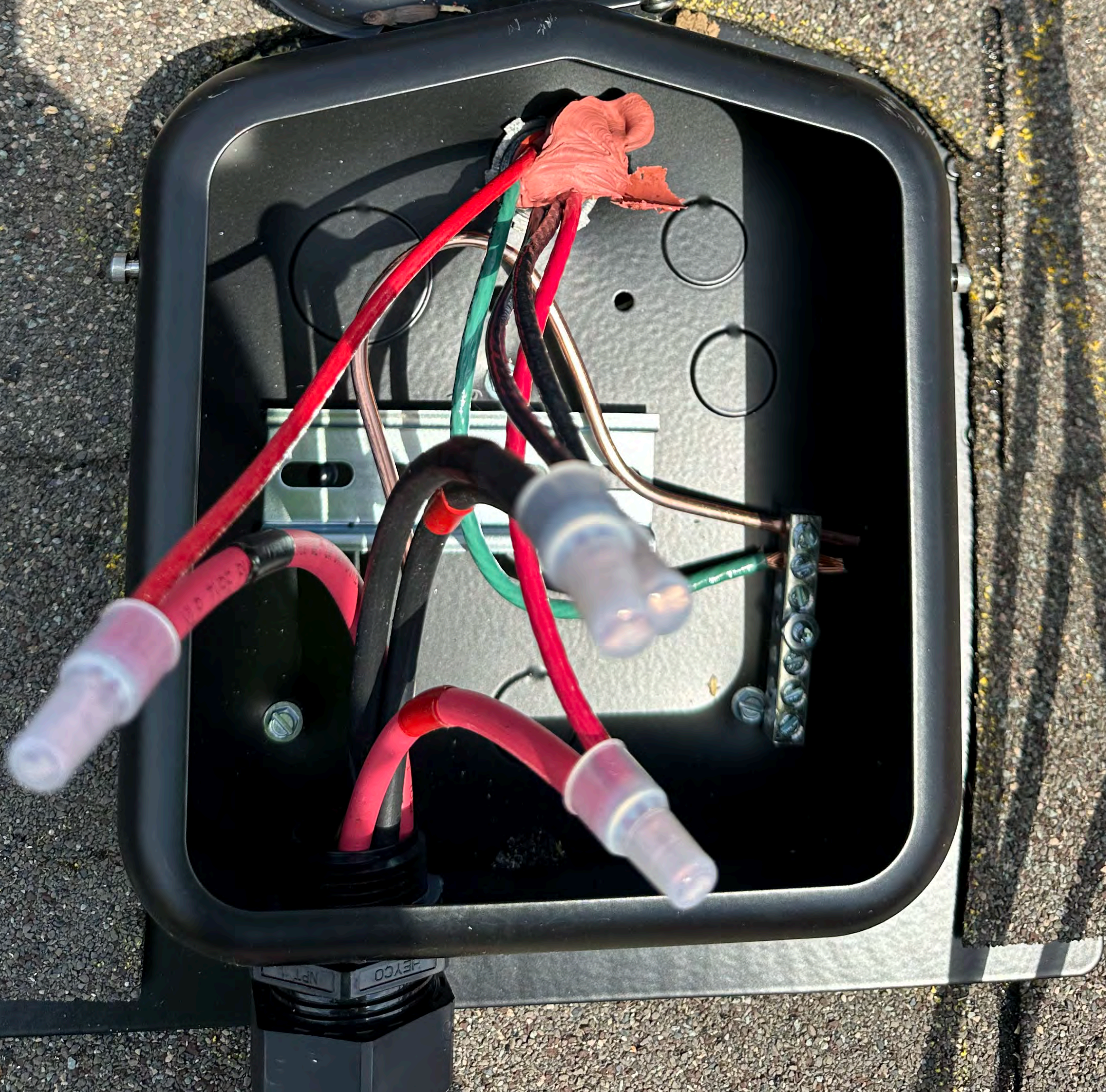
SSID: TqslpW_MKEATJ
Password: TPAJNATSQE
FT1250220000CW

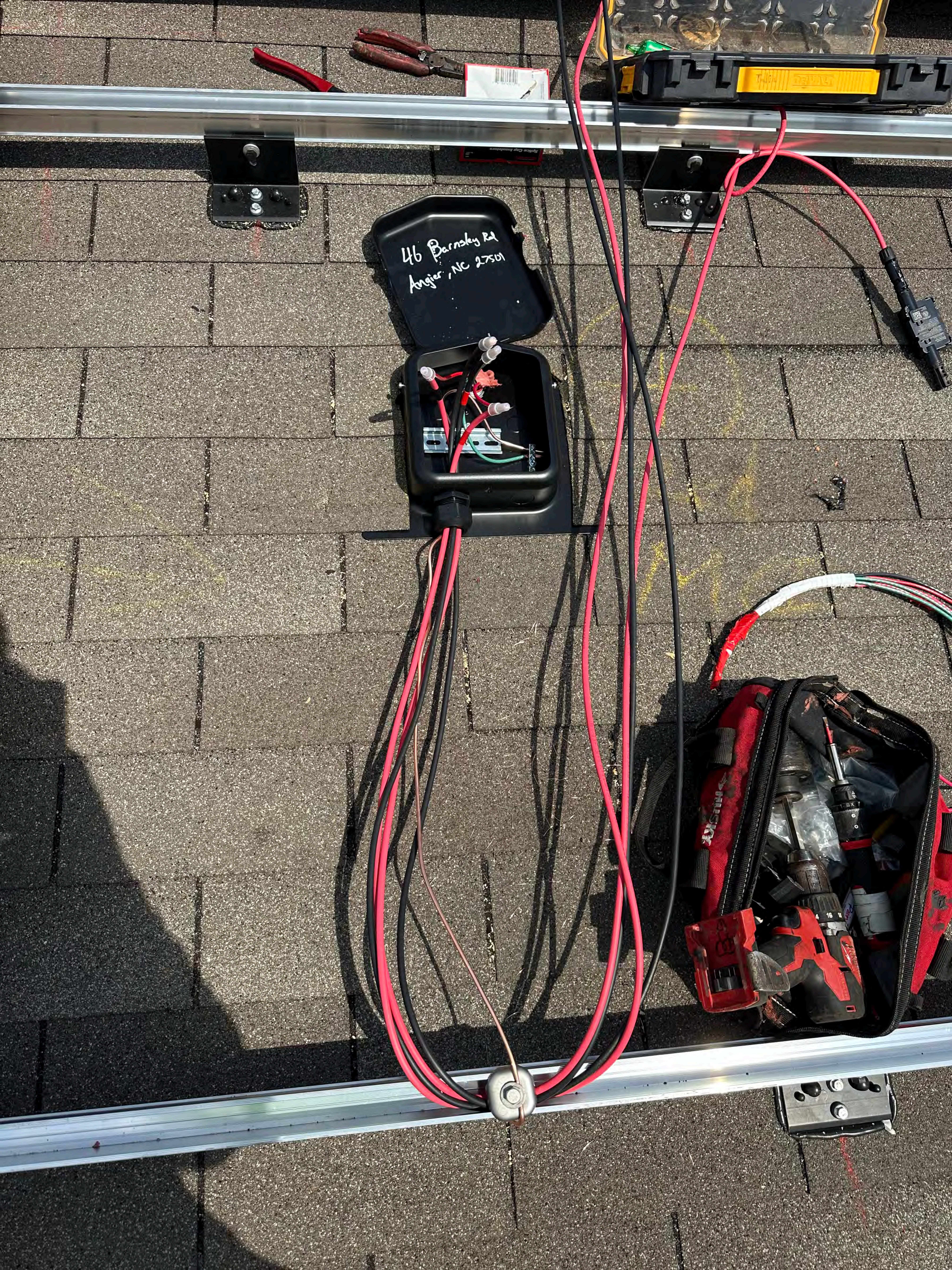
WARNING
TURN OFF POWER SWITCH BEFORE WIRING.
ELECTRIC SHOCK HAZARD TERMINALS ON THE LINE AND LOAD SIDES MAY BE ENERGIZED IN THE OPEN POSITION.





46 Barnsley Rd
Angier, NC 27501

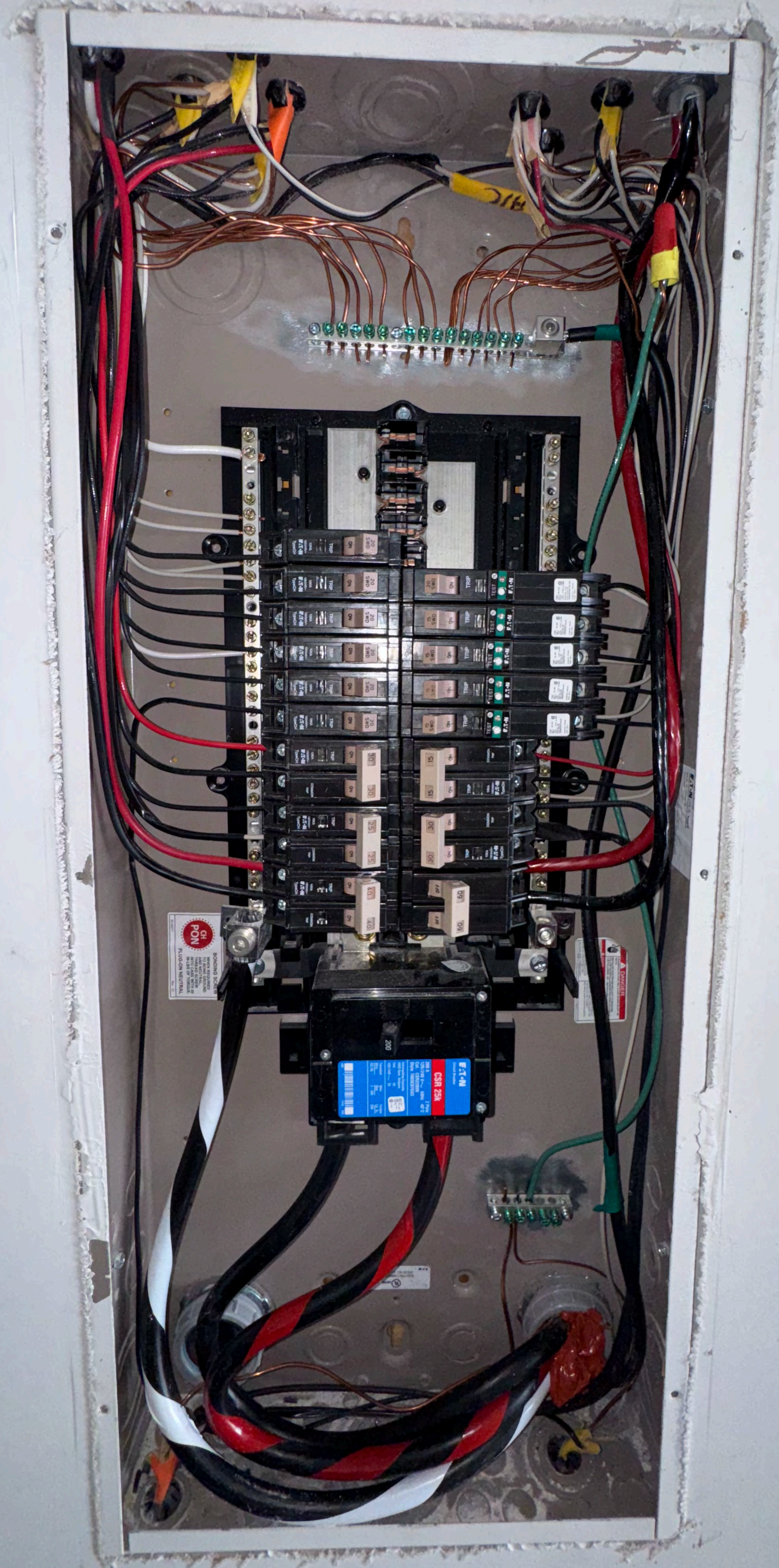












271

CH PON

BONDING SCREW
WHEN REQUIRED
TO BOND GROUND
AND NEUTRAL,
THREAD SCREW
INTO CASE WITH 40
IN-LBS OF TORQUE.
PLUG-ON NEUTRAL

Rev. 01

E-T-N
Circuit Breaker

CSR 25K

200 A
120/240 V
Cal. CSR2200N
Style 7803607683

2 Pole
60Hz 40°C

Interrupting Capacity
RMS Sym. Ampere
120/240 ~ 25

Terminal
Wire Size
CU/AL 2 - 300

Torque
6 in.
250

1413

240V DANGER

CALL TYPE XXXX-2 6000/10000 SUH-RES 2024-08-10 FEET 1895

D-47754
ARD
129295
LISTED



46

MCI-2 | PV RAPID
SHUTDOWN EQUIP
(P) 1879359-00-B
(S) GF22427800068H

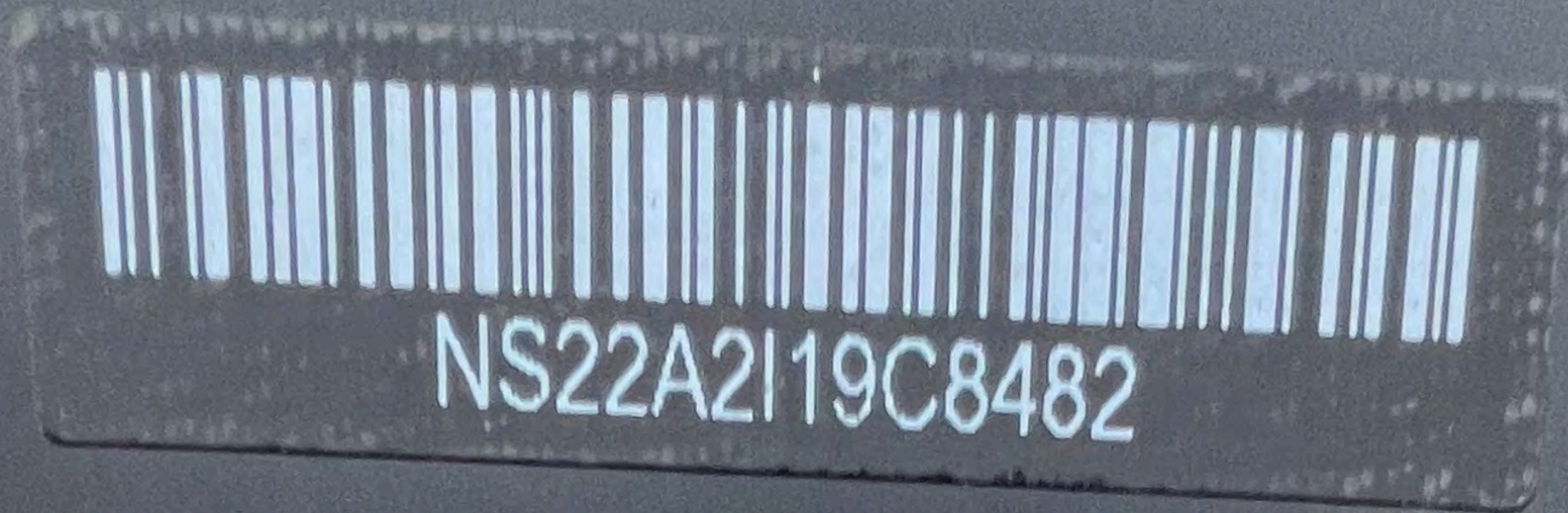
MAX DC VOLTAGE 1000V
OPERATING DC VOLTAGE 0-185V
MAX CURRENT 13A

MAX SHORT CIRCUIT CURRENT 17A
SHUTDOWN TIME LIMIT 10SEC
OPERATING TEMP -45C TO 70C
NEMA 4X/IP65
MADE IN USA



Intertek
5015363
CONFORMS TO UL STD 1741





CertainTeed
SAINT-GOBAIN

MODEL TYPE : CT370HC11-06

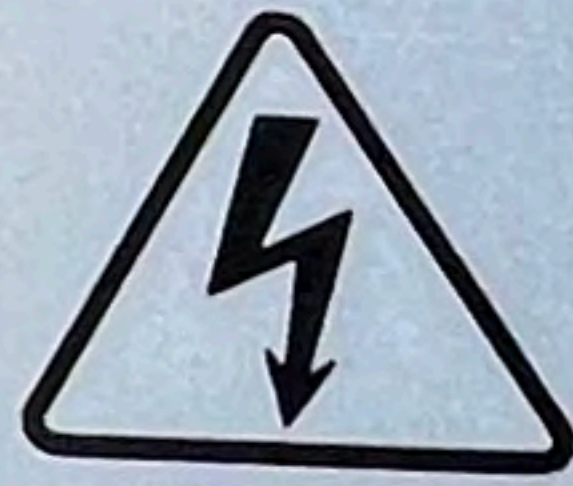
Made in Indonesia

Nominal Maximum Power	(Pmax):	370W
Maximum operating Voltage	(Vmp):	34.40V
Maximum operating Current	(Imp):	10.76A
Open Circuit Voltage	(Voc):	41.90V
Short Circuit Current	(Isc):	11.29A
Maximum System Voltage	:	1500V
Maximum Series Fuse Rating	:	20A

All electrical data at Standart Test Conditions (STC): Irradiance of 1000W/m², spectrum AM1.5 and temperature of 25°C.

Fire Rating: CLASS C/ TYPE I
Protection Class: CLASS II

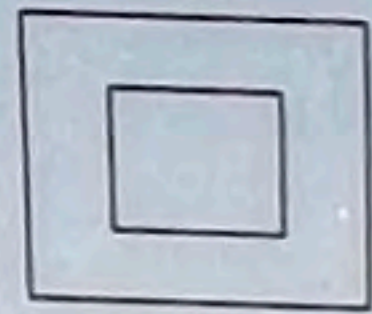
WARNING - ELECTRIC HAZARD



This solar module produces electrical voltage when exposed to sunlight or intense artificial lights. Proper precautions associated with electrical power systems must be taken while handling and installing this product.

PLEASE READ THE INSTRUCTION MANUAL FOR MORE INFORMATION PRIOR TO INSTALLATION.

Certain Teed limited Warranty is valid only for products purchased either directly from Certain Teed or from an authorized reseller who is in your region or authorized with written permission from Certain Teed.

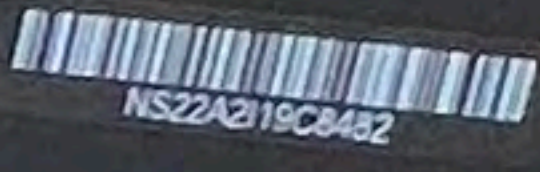


Conforms to UL STD.
UL61730-1/-2
UL81215-1/-1-1/-2
Certified to CSA STD.
C22.2 #61730-1/-2

20 Moores Rd, Malvern,
PA 19355
TEL: 1-800-233-8990



46



CertainTeed
MODEL TYPE: CT370HC11-06 Made in Indonesia

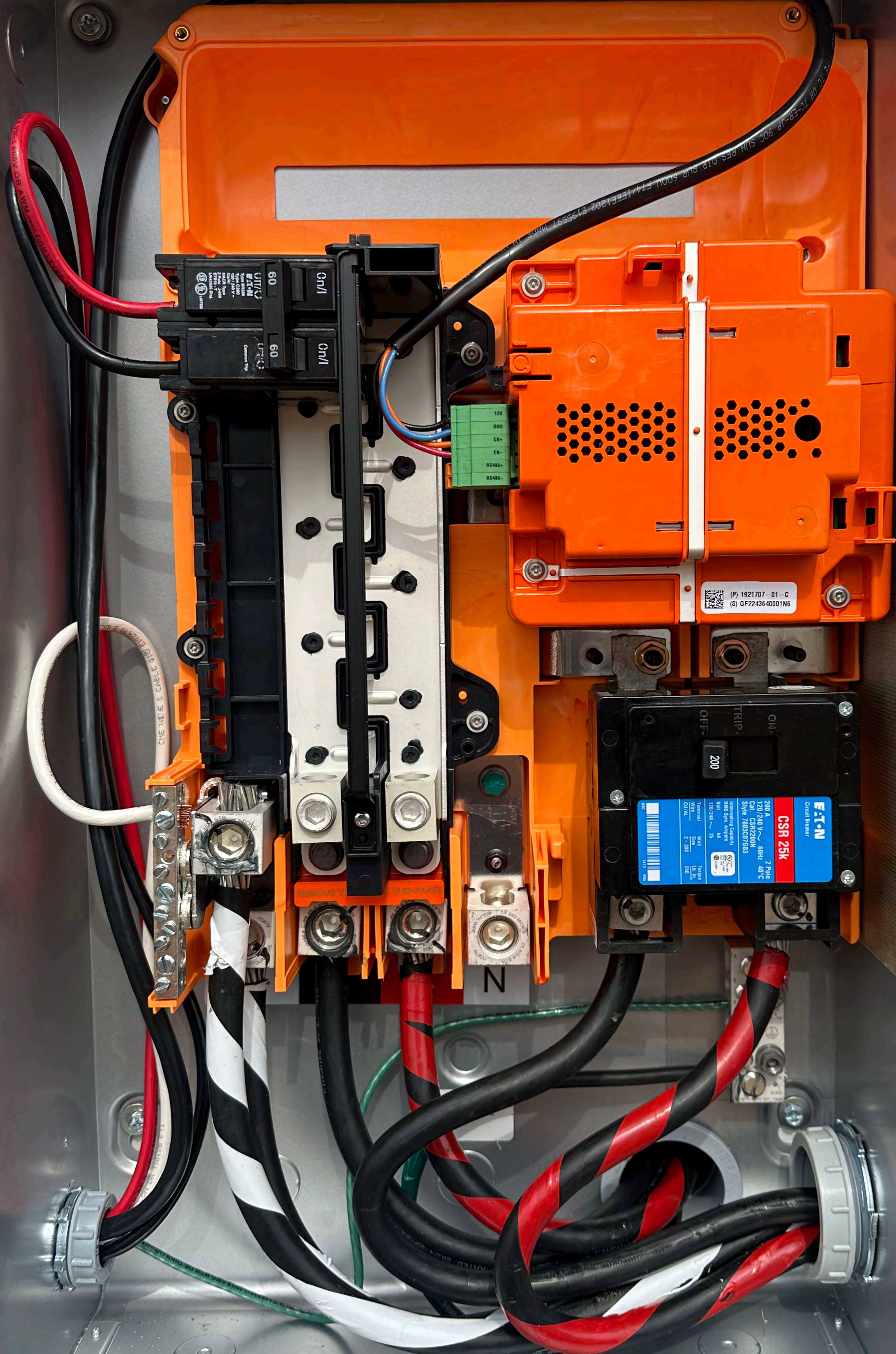
Manufacturer	CT370HC11-06
Model	CT370HC11-06
Material	Aluminum
Finish	Black
Weight	11.5 lbs
Dimensions (H x W x D)	22 1/2" x 36 1/2" x 1 1/2"

WARNING - ELECTRIC HAZARD
This device contains electrical components which may be energized or contain stored electrical energy. Do not touch or attempt to repair or modify the device while it is powered on or immediately after power has been removed. Always use proper safety procedures when handling and installing this device.

PLEASE READ THE INSTRUCTION MANUAL FOR MORE INFORMATION PRIOR TO INSTALLATION.

© 2014 CertainTeed Corporation. All rights reserved. For products distributed without license, CertainTeed Corporation or its authorized reseller shall be held liable in their entirety for any damages or losses resulting from the use of this product.

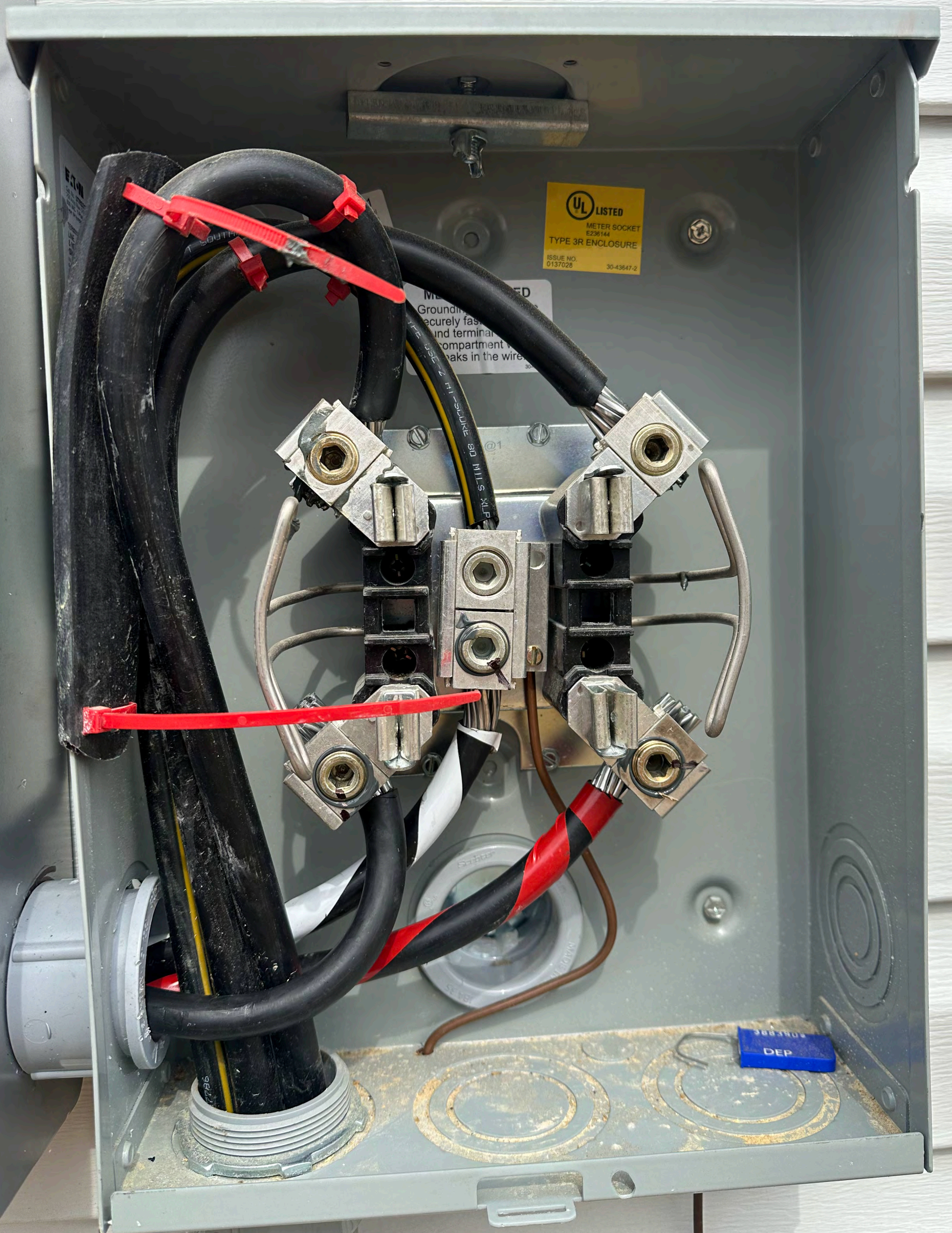
CE



(P) 1921707-01-C
(S) GF22436-40001N6

Eaton
CSR 25k
Current Breaker
2 Pole
48V AC
RMS Symmetrical
Type: THBB007083
UL 489
NEMA 3R
UL 1008
UL 1009
UL 1010
UL 1011
UL 1012
UL 1013
UL 1014
UL 1015
UL 1016
UL 1017
UL 1018
UL 1019
UL 1020
UL 1021
UL 1022
UL 1023
UL 1024
UL 1025
UL 1026
UL 1027
UL 1028
UL 1029
UL 1030
UL 1031
UL 1032
UL 1033
UL 1034
UL 1035
UL 1036
UL 1037
UL 1038
UL 1039
UL 1040
UL 1041
UL 1042
UL 1043
UL 1044
UL 1045
UL 1046
UL 1047
UL 1048
UL 1049
UL 1050
UL 1051
UL 1052
UL 1053
UL 1054
UL 1055
UL 1056
UL 1057
UL 1058
UL 1059
UL 1060
UL 1061
UL 1062
UL 1063
UL 1064
UL 1065
UL 1066
UL 1067
UL 1068
UL 1069
UL 1070
UL 1071
UL 1072
UL 1073
UL 1074
UL 1075
UL 1076
UL 1077
UL 1078
UL 1079
UL 1080
UL 1081
UL 1082
UL 1083
UL 1084
UL 1085
UL 1086
UL 1087
UL 1088
UL 1089
UL 1090
UL 1091
UL 1092
UL 1093
UL 1094
UL 1095
UL 1096
UL 1097
UL 1098
UL 1099
UL 1100

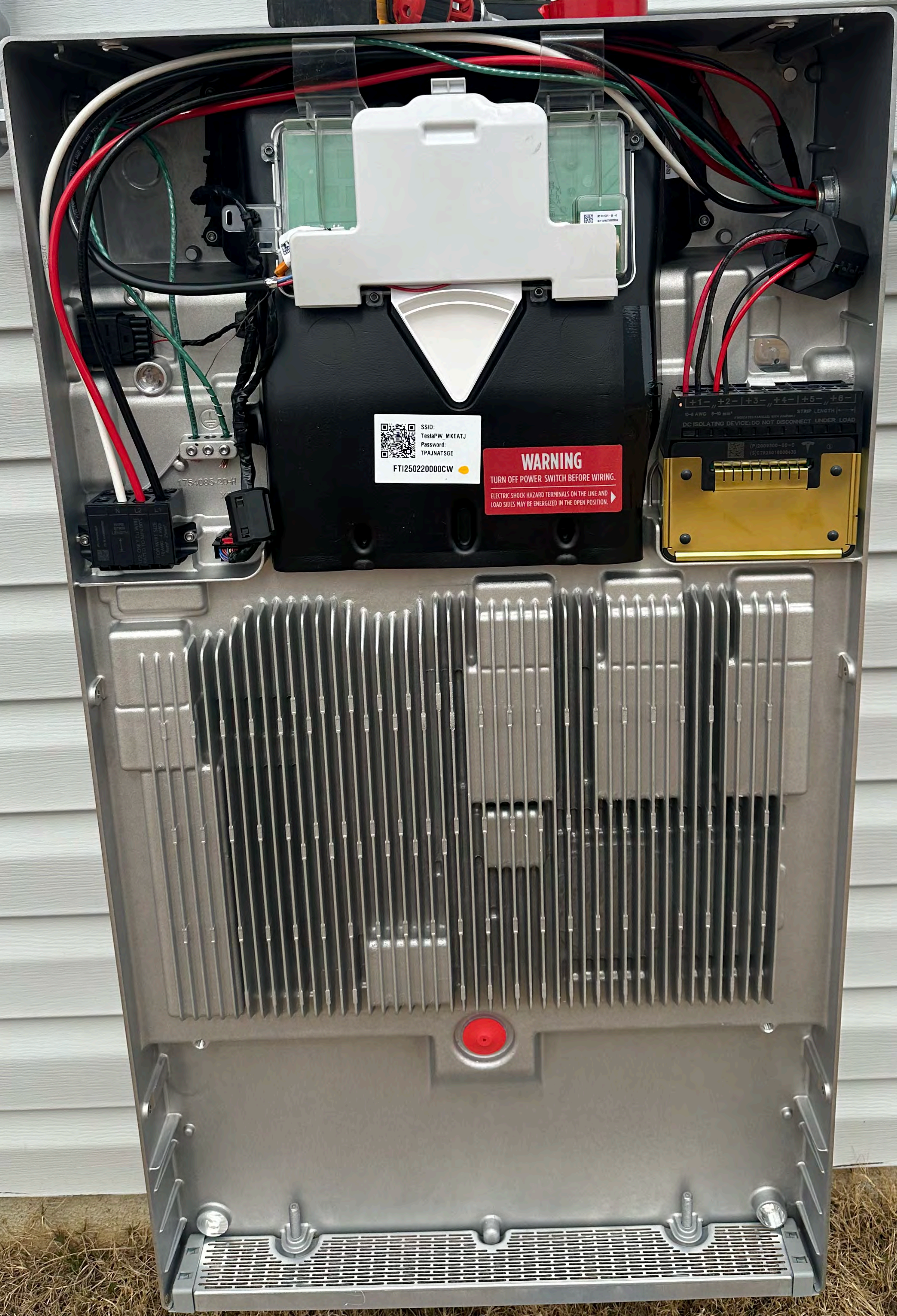
F3188



UL LISTED
METER SOCKET
E236144
TYPE 3R ENCLOSURE
ISSUE NO
0137028 30-43647-2

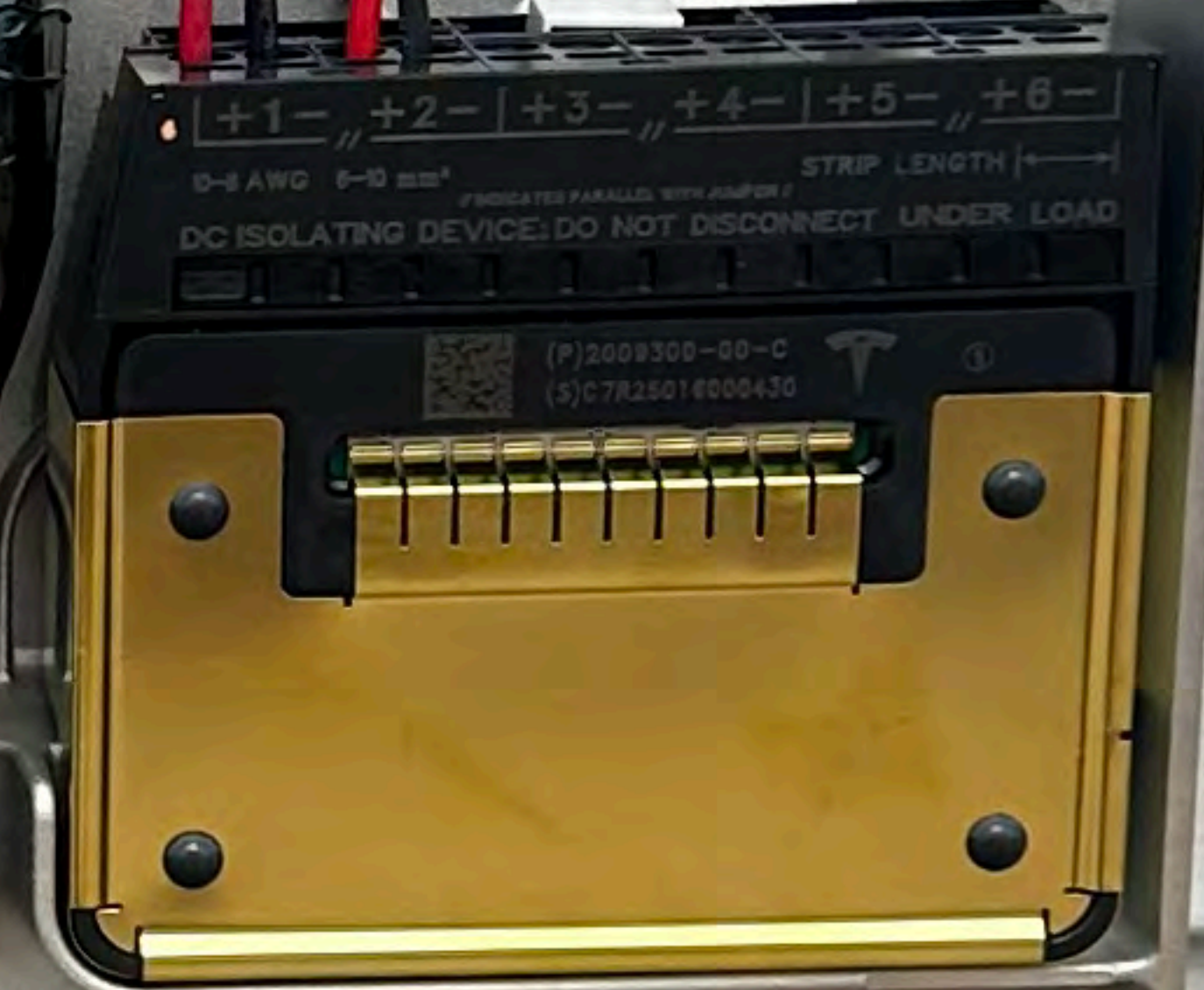
METER SOCKET
Grounding
securely fasten
and terminal
compartment
breaks in the wire

DEP



SSID
TestPW_MKEATJ
Password
TPAJNATSGE
FT125022000CW

WARNING
TURN OFF POWER SWITCH BEFORE WIRING.
ELECTRIC SHOCK HAZARD. TERMINALS ON THE LINE AND LOAD SIDES MAY BE ENERGIZED IN THE OPEN POSITION.



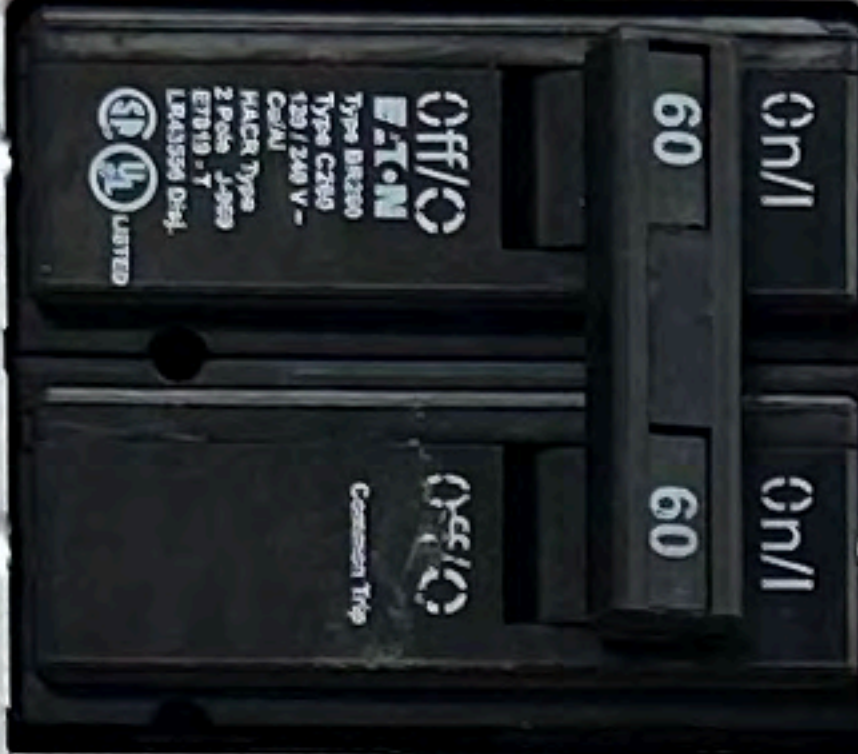
175-035-20-1



**MAIN BATTERY
DISCONNECT**

POWERWALL 3

POWERWALL 3



**PHOTOVOLTAIC SYSTEM
AC DISCONNECT**

RATED AC OUTPUT CURRENT **48** A
NOMINAL OPERATING AC VOLTAGE **240** V



**SERVICE
DISCONNECT**



GATEWAY 3

Conforms to UL STDs 67, 916, 869A, 1741
Certified to: CAN/CSA 22-2 No. 205, 29, 107.1

(P) 1841000-01-D
(S) GF22436400051L

IEC PROTECTIVE CLASS	CLASS I
ENCLOSURE TYPE	TYPE 3R, RAINPROOF
OPERATING TEMPERATURE RANGE	-20°C TO 50°C (-4°F TO 122°F)
AC INPUT / OUTPUT	
NOMINAL VOLTAGE	120/240VAC
PHASE	2W + N + PE
MAX CONTINUOUS CURRENT	200A
MAX SUPPLY SHORT CIRCUIT CURRENT	25kA*
GRID FREQUENCY	60Hz

*SEE INSTALLATION MANUAL FOR ALLOWABLE MAIN AND BRANCH BREAKER COMBINATIONS

CAUTION: RISK OF ELECTRIC SHOCK. MULTIPLE VOLTAGE SOURCES TERMINATED WITHIN. DISCONNECT EACH CIRCUIT BEFORE SERVICING. REFER SERVICING TO QUALIFIED PERSONNEL.

WARNING: ISOLATE AT SUPPLY AUTHORITY SOURCE BEFORE ENTERING THIS COMPARTMENT

ATTENTION: RISQUE DE CHOC ELECTRIQUE. PLUSIEURS SOURCES DE TENSION SONT CONNECTEES A L'INTERIEUR DE CET EQUIPEMENT. CHAQUE CIRCUIT DOIT ETRE DECONNECTE INDIVIDUELLEMENT AVANT INTERVENTION. LA MAINTENANCE DOIT ETRE EFFECTUEE PAR DU PERSONNEL QUALIFIE.

AVERTISSEMENT: ISOLER A LA SOURCE D'ALIMENTATION DU DISTRIBUTEUR AVANT D'OUVRIR CE COMPARTIMENT

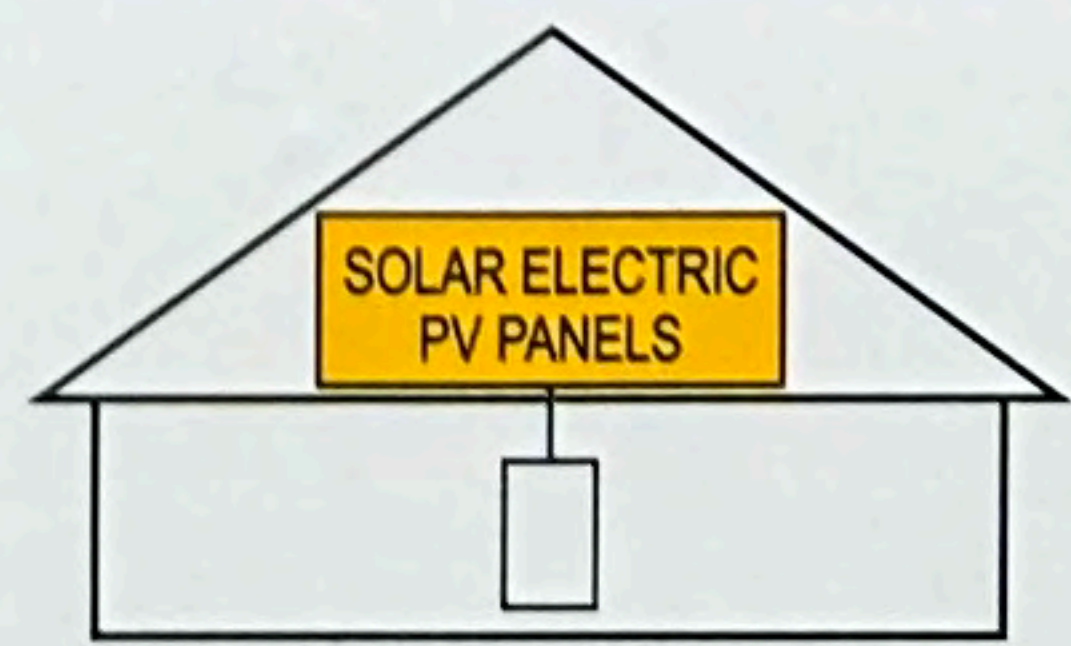
SUITABLE FOR USE WITH INTERCONNECTED/PARALLEL ELECTRIC POWER PRODUCTION SOURCES

SUITABLE FOR USE AS SERVICE EQUIPMENT

CLASS CTL PANELBOARD

TESLA | TESLA, INC. SOUTH PARK AVENUE, BUFFALO, NY 14220, USA TEL: 1(877)738-7373 WWW.TESLA.COM

**SOLAR PV SYSTEM
EQUIPPED WITH
RAPID SHUTDOWN**



TURN RAPID SHUTDOWN SWITCH TO THE "OFF" POSITION TO SHUT DOWN PV SYSTEM AND REDUCE SHOCK HAZARD IN THE ARRAY

WARNING PHOTOVOLTAIC POWER SOURCE



⚠ CAUTION
TRI POWER SOURCES
SECOND SOURCE IS AC BATTERY
THIRD SOURCE IS PV INVERTER



**RAPID SHUTDOWN
SWITCH FOR
SOLAR PV SYSTEM**

PV SYSTEM DISCONNECT (DC) INSIDE

**PHOTOVOLTAIC SYSTEM
DC DISCONNECT**

OPERATING VOLTAGE	60-550 VDC
OPERATING CURRENT	10.87 AMPS
MAX SYSTEM VOLTAGE	600 VDC
SHORT CIRCUIT CURRENT	11.81 AMPS
CHARGE CONTROLLER MAX	AMPS

**MAIN BATTERY
SYSTEM DISCONNECT**

OFF

MAX DC VOLTAGE OF PV SYSTEM

TESLA POWERWALL ENERGY STORAGE SYSTEM GRID SUPPORT UTILITY INTERACTIVE & STANDALONE INVERTER

PHOTOVOLTAIC (PV) POWER

Operating Voltage	60-550 VDC
Operating Current	10.87 AMPS
Max System Voltage	600 VDC
Short Circuit Current	11.81 AMPS
Charge Controller Max	AMPS

TESLA PART NO. 1707000-11-L
SN: TD1260360015CZ

WARNING: HIGH VOLTAGE. DO NOT TOUCH. 3 MINUTES

CAUTION: BATTERY ENERGY STORAGE SYSTEM EQUIPMENT IS NOT TO BE USED FOR CHARGING ELECTRICAL VEHICLES.

ATTENTION: BATTERY ENERGY STORAGE SYSTEM EQUIPMENT IS NOT TO BE USED FOR CHARGING ELECTRICAL VEHICLES.

AVERTISSEMENT: BATTERY ENERGY STORAGE SYSTEM EQUIPMENT N'EST PAS À UTILISER POUR LA RECHARGE DES VEHICULES ELECTRIQUES.

TESLA