





solar **3000** Made in USA

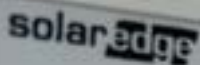
solar **3000** Made in USA

Empire

Empire







### StorEdge Connection Unit

Max DC Voltage (PV/Battery)	480 Vdc
Max DC Current (PV)	62 Adc
Max DC Power (PV)	23.2 kWdc
Max Continuous DC Current (Battery)	31 Adc
Max Continuous DC Power (Battery)	11.6 kWdc
Max AC Voltage	264 Vac
AC-Single Phase Frequency	50/60 Hz
Max AC Current (Grid)	48 Aac

For more details refer to the installation guide  
 Patent marketing notice: see [WWW.SOLAREEDGE.COM/patent](http://WWW.SOLAREEDGE.COM/patent)

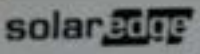
DCD-1PH-US-P2H-F-1

PN:

SB2324-191D00322-56

SN:

MADE IN U.S.A FROM IMPORTED PARTS



### StorEdge Connection Unit

Max AC Current (Smart EV Charger)	40 Aac
Max Continuous Output Power (Smart EV Charger)	9600 W
Max Battery Energy Storage	32 kWh
Number of AC phases	L1, L2, N
Maximum AC short circuit current	74 Aac
Weight	80.2 / 13.7 lbs/kg
Ambient Temperature:	-40°C -60°C
Enclosure Rating:	IP65 / Type 4X

For more details refer to the installation guide  
 Patent marketing notice: see [WWW.SOLAREEDGE.COM/patent](http://WWW.SOLAREEDGE.COM/patent)  
 Use 90°C copper PV Wires only  
 Reverse-Polarity ANSI C12.20  
 PHOTOVOLTAIC RAPID SHUTDOWN SYSTEM

DCD-1PH-US-P2H-F-1

PN:

SB2324-191D00322-56

SN:

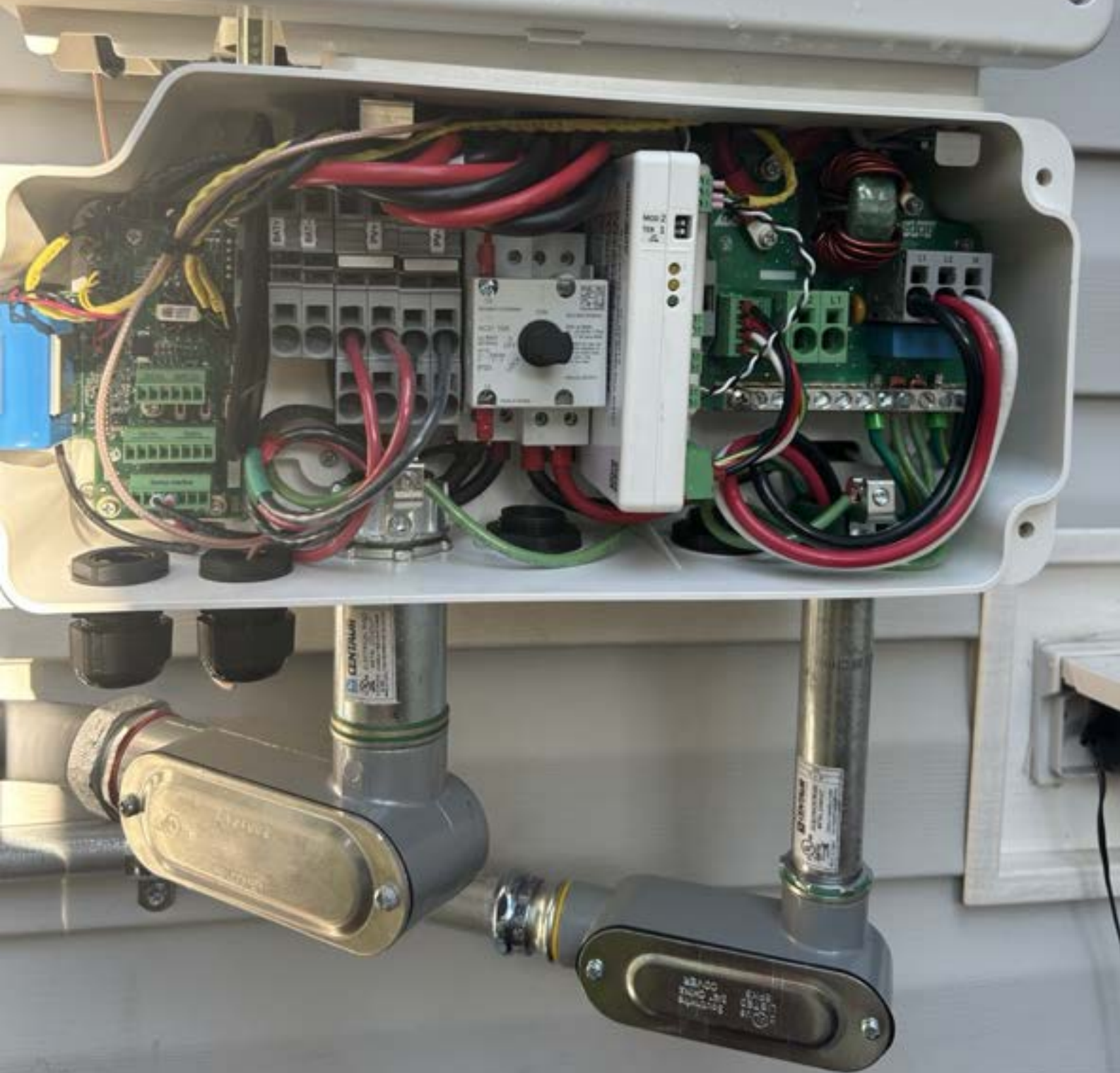
MADE IN U.S.A FROM IMPORTED PARTS

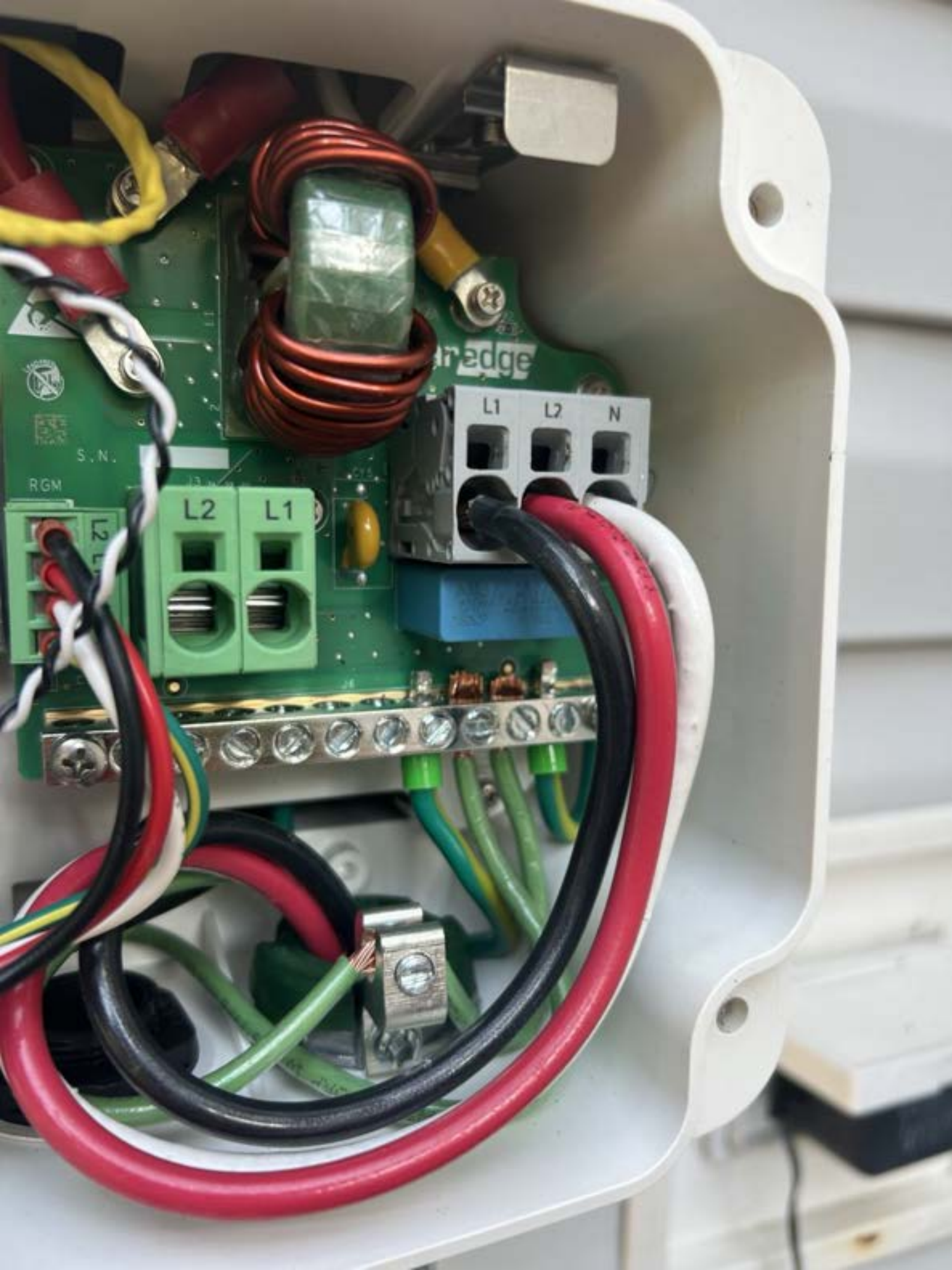




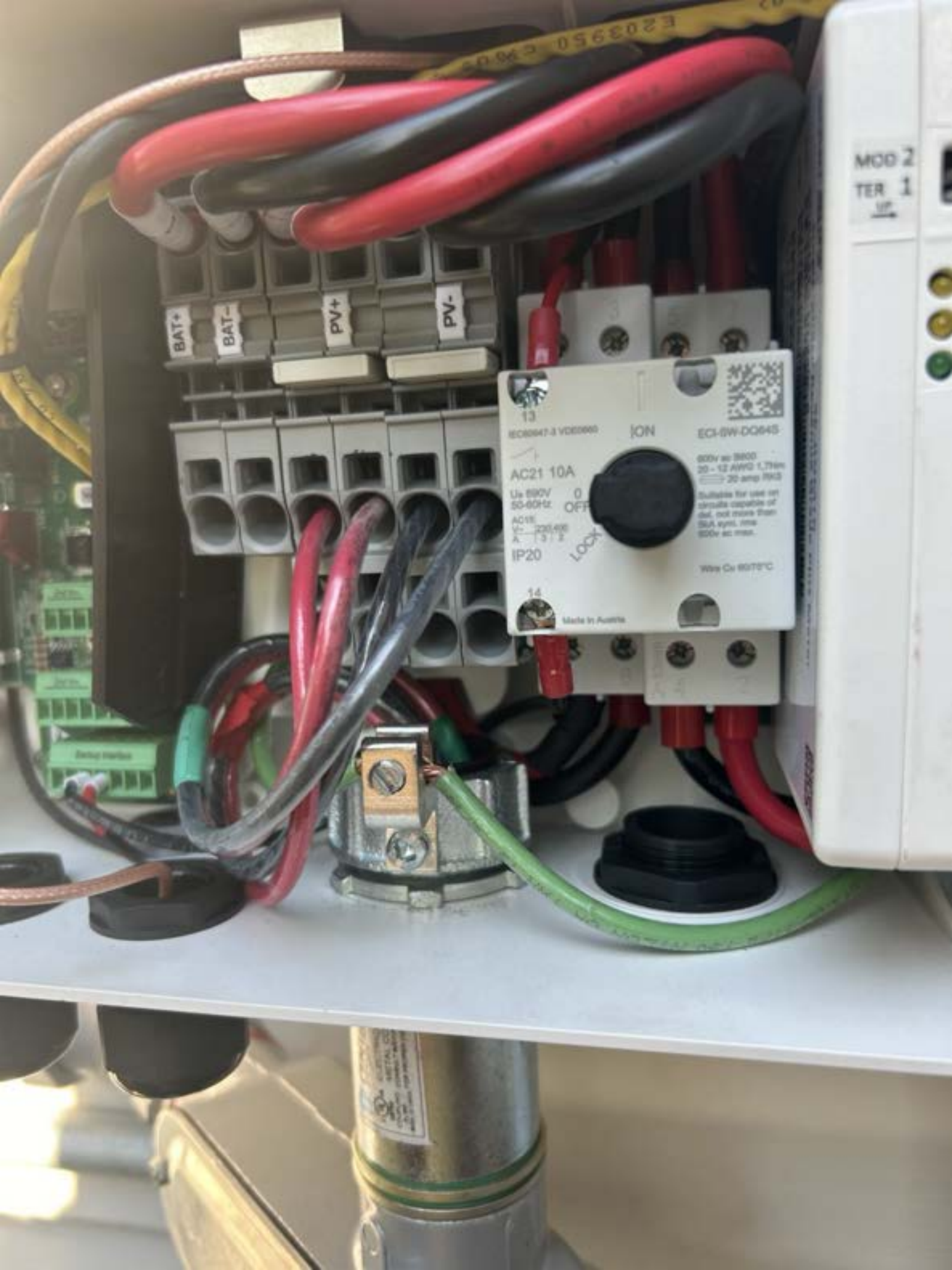
solar edge

Made in USA  
from imported parts









MOD 2  
TER 1

BAT+  
BAT-  
PV+  
PV-

13  
IEC60647-3 VDE0660  
ION  
ECI-6W-DQ64S  
AC21 10A  
Use 690V 50-60Hz AC18  
Ic 220 A  
A 13/2  
IP20  
0 OFF  
LOCK  
0  
600V ac 3800  
20 - 12 AWG 1,75mm  
20 amp IEC  
Suitable for use on circuits capable of del. not more than 50A sym. rms 600V ac max.  
Wires Cu 90°C  
14  
Made in Australia



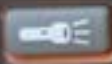






**KLEIN TOOLS**

VDC  
0.00



**TOUGH METER**  
**(IP53)**

ET250 VOLTAGE TESTER  
CAT IV 600V

COM

+



Ω



BAT+ BAT- PV PV

AC21 10A  
10 600V  
50-60Hz  
OFF  
IP20

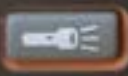
LENZING





**KLEIN  
TOOLS**

VDC  
0.13



TOUGH METER  
ET250 VOLTAGE TESTER  
CAT IV 600V

COM

+



13  
AC21 10A  
14  
IP20



solar**edge**

Made in USA   
from imported parts

P I D

DC DISCONNECT

ON

OFF



**DO NOT OPERATE**

THIS LOCK/TAG MAY ONLY BE REMOVED BY:

NAME: TOP TIER

DEPT: \_\_\_\_\_

EXPECTED COMPLETION: \_\_\_\_\_

www.solar-edge.com • 1-800-451-7310

solar**edge**

INVERTER # 1

solar edge

Made in USA  
from imported parts

DC DISCONNECT

ON

OFF

solar edge

**WARNING**  
**DO NOT OPERATE**  
THIS LOCKTAG MAY ONLY BE REMOVED BY TQP 77475

PHOTOVOLTAIC POWER SOURCE



 **CAUTION**   
SOLAR ELECTRIC SYSTEM CONNECTED

GRIDSTREAM RF  
900E144



TYPE FOCUS AXRe-SD  
FORM 25 CL200 240V 3W 60Hz T4x30 kWh 7.2

**CENTRAL EMC**

165 739 693  
Lands+Gyr

 **WARNING**  
DUAL POWER SUPPLY  
SOURCES: UTILITY GRID  
AND PV SOLAR  
ELECTRIC SYSTEM

PHOTOVOLTAIC  
SYSTEM kWh METER

 **CAUTION**   
SOLAR ELECTRIC SYSTEM CONNECTED













**CAUTION**

80 81 82 83 84 85 86 87 88 89 90 91 92 93 94



**solar edge SE5700H - US**  
Grid Support Utility Interactive Inverter With Stand - Mono Module

Standard Voltage Range  
Max Input Current  
Max Continuous Output Power 240 Volts  
Max Continuous Output Power per Current Sense - Mono  
Voltage Min - Max - Max  
Max Output - Mono Capacity  
Max Continuous Output Current Single Connected  
Max Output Power Output  
Max DCVDC Max Input Current  
Frequency Min - Max - Max  
Output Power Factor  
Max Ambient Temperature  
Standards  
With Integrated Ground Fault Protection per IEEE 1547.812  
Type 1 Photovoltaic Arc - Fault Current - Protection  
ATTENTION: The maximum operating current of the inverter may be corrected electronically. Refer to manufacturer's instructions for more information.



4004590



81-11-100000  
100010  
ActiveWatt  
Fax: 519-335-3344 (Mon-Fri) 9:00-17:00  
WiFi MAC:  
84:08:05:AD:9D:0F

PN: SE5700H - USMNUBL15  
SN: SE2224 - 87508080F - E7



**solar edge**



**PHOTOVOLTAIC RAPID  
SHUTDOWN SYSTEM**

**solar edge**



81-11-100000  
100010  
ActiveWatt  
Fax: 519-335-3344 (Mon-Fri) 9:00-17:00  
WiFi MAC:  
84:08:05:AD:9D:0F

Intertek  
4004590

750RDB0F-67

solar **edge**

### StorEdge Connection Unit



Max DC Voltage (PV/Battery)	480 Vdc
Max DC Current (PV)	62 Adc
Max DC Power (PV)	23.2 kWdc
Max Continuous DC Current (Battery)	31 Adc
Max Continuous DC Power (Battery)	11.6 kWdc
Max AC Voltage	264 Vac
AC-Single Phase Frequency	50/60 Hz
Max AC Current (Grid)	48 Aac

For more details refer to the installation guide  
Patent marketing notice: see [WWW.SOLAREEDGE.COM/patent](http://WWW.SOLAREEDGE.COM/patent)

DCD-1PH-US-P2H-F-I

PN:

SB2224-191D0C919-43

SN:

MADE IN U.S.A FROM IMPORTED PARTS



Intertek  
4004590



solar **edge**

### StorEdge Connection Unit



Max AC Current (Smart EV Charger)	40 Aac
Max Continuous Output Power (Smart EV Charger)	9600 W
Max Battery Energy Storage	32 kWh
Number of AC phases	L1, L2, N
Maximum AC short circuit current	74 Aac
Weight	30.2 / 13.7 lbs/kg
Ambient Temperature:	-40°C ... 60°C
Enclosure Rating:	IP65 / Type 4X

For more details refer to the installation guide  
Patent marketing notice: see [WWW.SOLAREEDGE.COM/patent](http://WWW.SOLAREEDGE.COM/patent)  
Use 90°C copper PV Wires only.  
Revenue Grade ANSI C12.20  
PHOTOVOLTAIC RAPID SHUTDOWN SYSTEM

DCD-1PH-US-P2H-F-I

PN:

SB2224-191D0C919-43

SN:

MADE IN U.S.A FROM IMPORTED PARTS



Intertek  
4004590





solar**edge**

Made in USA  
from imported parts



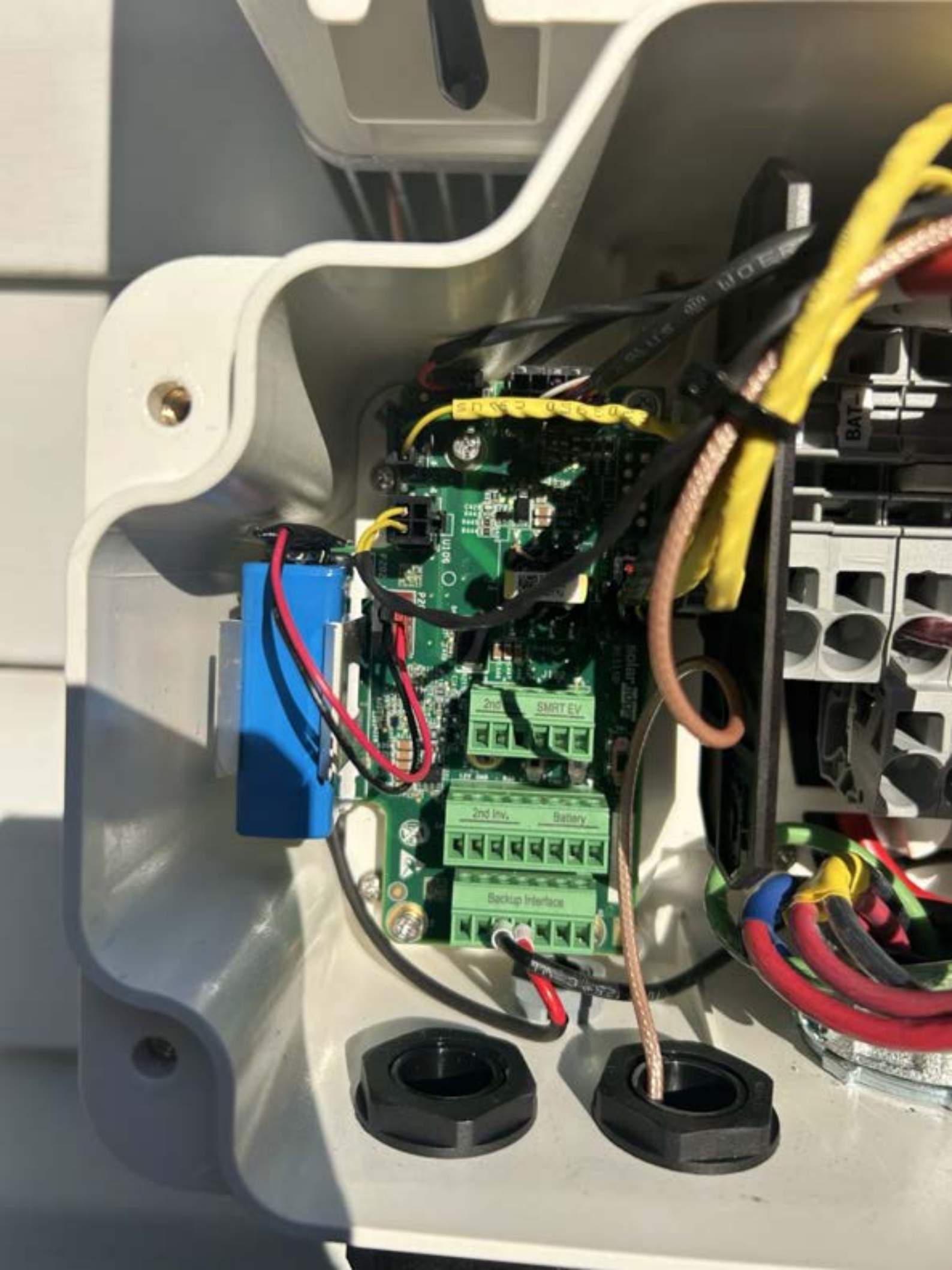




BAT+  
BAT-  
PV+  
PV-

13  
IEC60898-3 VDE0650  
ION  
E0-SW-D054  
AC21 10A  
Us 850V  
50-60Hz  
AC15  
I<sub>n</sub> 20A  
I<sub>Δn</sub> 3 I<sub>n</sub>  
IP20  
14  
Made in Australia

SOLAREDGE  
5E-RGMTR  
5E-Phase Revenue Grade Plus Meter  
MOD 2  
TER 1  
↑



SMRT EV

2nd Inv. Battery

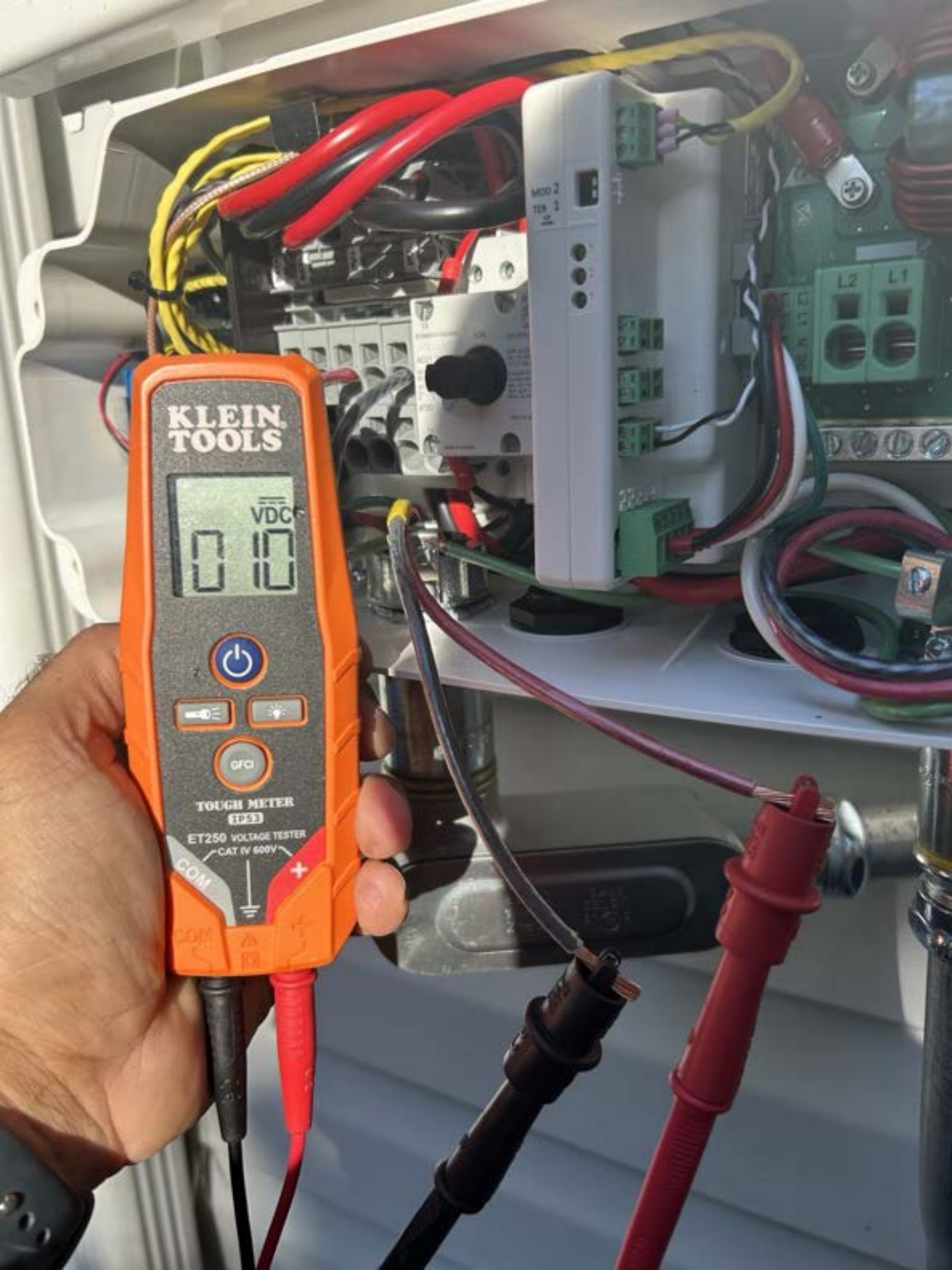
Backup Interface

BAT









**KLEIN  
TOOLS**

0.10 VDC



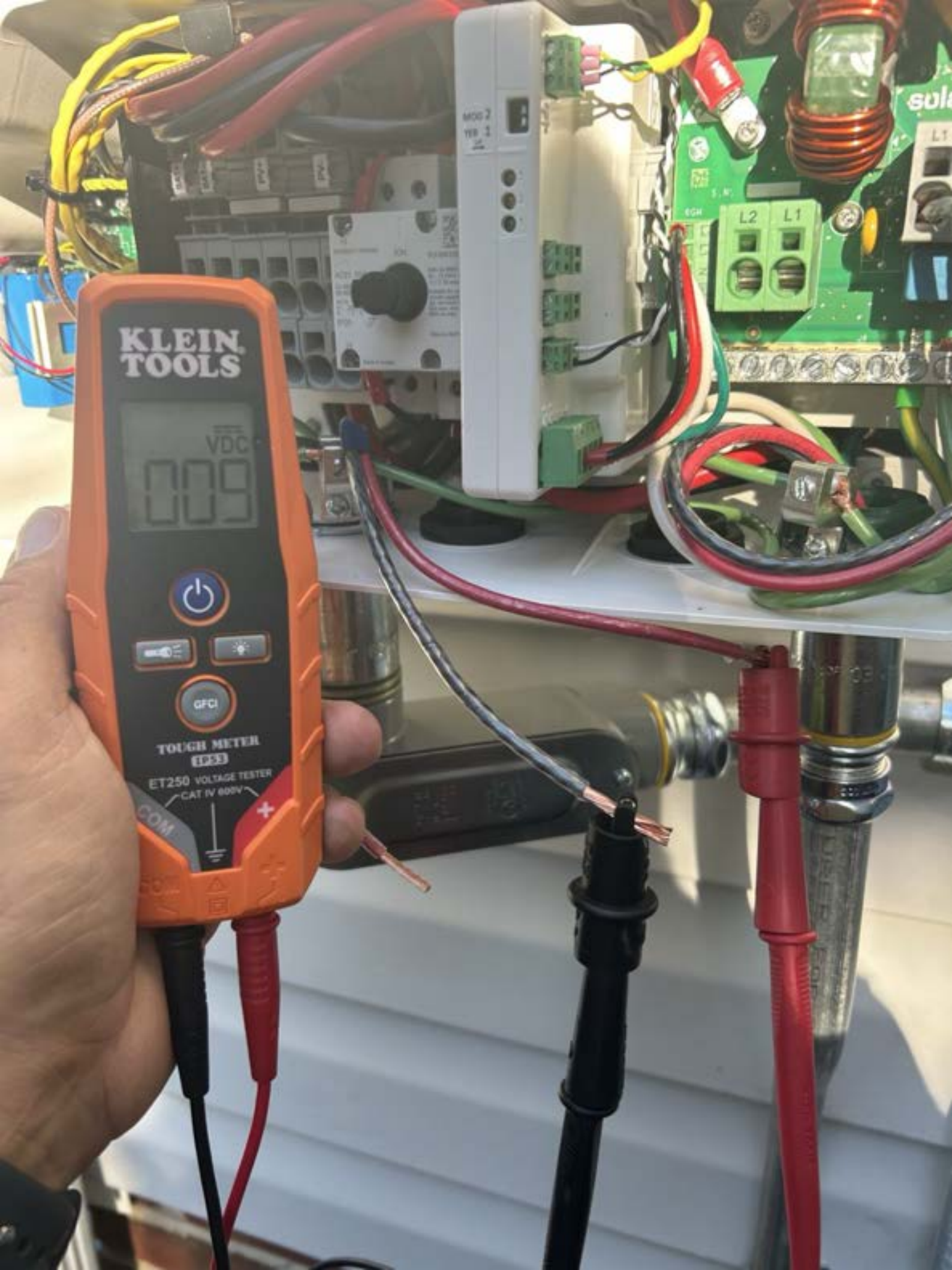
**TOUGH METER  
ET250**

**ET250 VOLTAGE TESTER  
CAT IV 600V**

COM

+





**KLEIN  
TOOLS**

VDC  
0.09



**TOUGH METER**



**ET250 VOLTAGE TESTER**

CAT IV 600V

COM

+

solar**edge**

Made in USA   
from imported parts 

P I O

DC DISCONNECT

ON

OFF

**DO NOT OPERATE**

**DANGER**

THIS LOCK/TAG MAY ONLY BE REMOVED BY:

NAME: \_\_\_\_\_

DEPT.: **TOP TIER**

EXPECTED COMPLETION: \_\_\_\_\_

www.aucuburn.com • model# TAR105

sola









<b>⚠ DANGER</b>	<b>⚠ PELIGRO</b>	<b>⚠ DANGER</b>
<p>WARNING: This device contains live parts. Do not touch the live parts. Do not touch the live parts when the device is energized. Do not touch the live parts when the device is energized. Do not touch the live parts when the device is energized.</p> <p>Do not touch the live parts when the device is energized. Do not touch the live parts when the device is energized. Do not touch the live parts when the device is energized.</p>	<p>ADVERTENCIA: Este dispositivo contiene partes vivas. No toque las partes vivas. No toque las partes vivas cuando el dispositivo está energizado. No toque las partes vivas cuando el dispositivo está energizado. No toque las partes vivas cuando el dispositivo está energizado.</p> <p>No toque las partes vivas cuando el dispositivo está energizado. No toque las partes vivas cuando el dispositivo está energizado. No toque las partes vivas cuando el dispositivo está energizado.</p>	<p>WARNING: This device contains live parts. Do not touch the live parts. Do not touch the live parts when the device is energized. Do not touch the live parts when the device is energized. Do not touch the live parts when the device is energized.</p> <p>Do not touch the live parts when the device is energized. Do not touch the live parts when the device is energized. Do not touch the live parts when the device is energized.</p>

**GENERAL DUTY SAFETY SWITCH**  
**TYPE 20 Breaker - Non-Fuse**

**TERMINALS SUITABLE FOR AL-CU WIRE.**  
**TERMINALES ADECUADAS PARA CONDUCTORES DE AL-CU.**

**GENERAL DUTY SAFETY SWITCH**  
**TYPE 20 Breaker - Non-Fuse**

TERMINAL NUMBER	TERMINAL TYPE	TERMINAL SIZE	TERMINAL MATERIAL
1	AL-CU	1/2"	AL-CU
2	AL-CU	1/2"	AL-CU
3	AL-CU	1/2"	AL-CU
4	AL-CU	1/2"	AL-CU
5	AL-CU	1/2"	AL-CU
6	AL-CU	1/2"	AL-CU
7	AL-CU	1/2"	AL-CU
8	AL-CU	1/2"	AL-CU
9	AL-CU	1/2"	AL-CU
10	AL-CU	1/2"	AL-CU

**WARNING: This device contains live parts. Do not touch the live parts. Do not touch the live parts when the device is energized. Do not touch the live parts when the device is energized. Do not touch the live parts when the device is energized.**

**ADVERTENCIA: Este dispositivo contiene partes vivas. No toque las partes vivas. No toque las partes vivas cuando el dispositivo está energizado. No toque las partes vivas cuando el dispositivo está energizado. No toque las partes vivas cuando el dispositivo está energizado.**

**WARNING: This device contains live parts. Do not touch the live parts. Do not touch the live parts when the device is energized. Do not touch the live parts when the device is energized. Do not touch the live parts when the device is energized.**

**WARNING: This device contains live parts. Do not touch the live parts. Do not touch the live parts when the device is energized. Do not touch the live parts when the device is energized. Do not touch the live parts when the device is energized.**

**ADVERTENCIA: Este dispositivo contiene partes vivas. No toque las partes vivas. No toque las partes vivas cuando el dispositivo está energizado. No toque las partes vivas cuando el dispositivo está energizado. No toque las partes vivas cuando el dispositivo está energizado.**

**WARNING: This device contains live parts. Do not touch the live parts. Do not touch the live parts when the device is energized. Do not touch the live parts when the device is energized. Do not touch the live parts when the device is energized.**

**ADVERTENCIA: Este dispositivo contiene partes vivas. No toque las partes vivas. No toque las partes vivas cuando el dispositivo está energizado. No toque las partes vivas cuando el dispositivo está energizado. No toque las partes vivas cuando el dispositivo está energizado.**

**WARNING: This device contains live parts. Do not touch the live parts. Do not touch the live parts when the device is energized. Do not touch the live parts when the device is energized. Do not touch the live parts when the device is energized.**

**ADVERTENCIA: Este dispositivo contiene partes vivas. No toque las partes vivas. No toque las partes vivas cuando el dispositivo está energizado. No toque las partes vivas cuando el dispositivo está energizado. No toque las partes vivas cuando el dispositivo está energizado.**

**WARNING: This device contains live parts. Do not touch the live parts. Do not touch the live parts when the device is energized. Do not touch the live parts when the device is energized. Do not touch the live parts when the device is energized.**

**ADVERTENCIA: Este dispositivo contiene partes vivas. No toque las partes vivas. No toque las partes vivas cuando el dispositivo está energizado. No toque las partes vivas cuando el dispositivo está energizado. No toque las partes vivas cuando el dispositivo está energizado.**



MD

DFD

Manufactured by  
**E.T.N.**  
 Toronto





**EATON**

General Duty Safety Switch  
Interrupteur de sécurité à usage général  
Interruptor de seguridad de servicio general

100 A, 240 V, 60 Hz

Complete ratings inside  
Valeurs nominales complètes à l'intérieur  
Información completa de especificación en el interior

Further instructions inside  
Autres instructions à l'intérieur  
Instrucciones adicionales en el interior

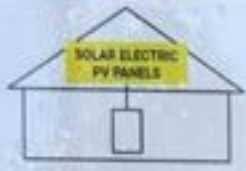
Made in U.S.A. / Fabriqué aux U.S.A. / Hecho en U.S.A.

**⚠ DANGER**  
This switch is designed to protect personnel from electric shock. It is not intended to protect equipment from damage. Do not use this switch for any purpose other than that intended. See the instructions for more information.

**⚠ PELIGRO**  
Este interruptor está diseñado para proteger a las personas de los riesgos de choque eléctrico. No está diseñado para proteger el equipo de daños. No use este interruptor para ningún propósito que no sea el que se indica. Consulte las instrucciones para obtener más información.



**SOLAR PV SYSTEM  
EQUIPPED WITH  
RAPID SHUTDOWN**



TURN RAPID SHUTDOWN SWITCH TO THE "OFF" POSITION TO SHUT DOWN PV SYSTEM AND REDUCE SHOCK HAZARD IN THE ARRAY

**RAPID SHUTDOWN  
SWITCH FOR  
SOLAR PV SYSTEM**

**⚠ WARNING**  
ELECTRIC SHOCK HAZARD

TERMINALS ON THE LINE AND LOAD SIDES MAY BE ENERGIZED IN THE OPEN POSITION

**AC DISCONNECT**  
PHOTOVOLTAIC SYSTEM  
POWER SOURCE

RATED AC OUTPUT CURRENT	<b>56</b>	AMPS
NOMINAL OPERATING AC VOLTAGE	<b>240</b>	VOLTS

ON

OFF










deku

HOT TUB





subpanel

 **WARNING**

DUAL POWER SUPPLY

SOURCES: UTILITY GRID  
AND PV SOLAR  
ELECTRIC SYSTEM









# EATON

## BR816L125RP

### TYPE 3R ENCLOSURE - RAINPROOF GABINETE TIPO 3R - A PRUEBA DE LLUVIA

DESPACHADO EN SU PAQUETE ORIGINAL SIN DESMONTAR. NO SE DEBE DESMONTAR NI REPARAR. PARA MÁS INFORMACIÓN, CONTACTE A NUESTRO SERVICIO AL CLIENTE EN EL NÚMERO DE TELÉFONO QUE SE ENCUENTRA EN LA PARTE TRASERA DE LA CUBIERTA. (1-800-451-7273)

SHORT CIRCUIT PROTECT. THESE CIRCUIT BREAKERS ARE NOT TO BE USED AS SHORT CIRCUIT PROTECT. DEVICES. TO THE LOWEST INTERRUPTING CAPACITY OF ANY DEVICE INSTALLED.

Interruptor	Clasificación de corriente	Clasificación de potencia
BR 816L125RP	125 A	100 kVA
BR 816L100RP	100 A	75 kVA
BR 816L75RP	75 A	50 kVA
BR 816L50RP	50 A	30 kVA
BR 816L25RP	25 A	15 kVA

ADDITIONAL OR REPLACEMENT BREAKERS SHALL BE OF THE SAME MANUFACTURER AND TYPE, AND SHALL MEET AN INTERRUPTING RATING EQUAL TO OR GREATER THAN THE INTERRUPTING RATING OF ANY CIRCUIT BREAKER INSTALLED.

CON INTERRUPTORES ADICIONALES O DE REEMPLAZO DEBEN DE LA MISMA FABRICANTE Y TIPO Y DEBE TENER UNA CLASIFICACIÓN INTERRUPTORIAL IGUAL O MAYOR QUE LA CLASIFICACIÓN INTERRUPTORIAL DE CUALQUIER INTERRUPTOR INSTALADO.

USE TYPE BR 816L125RP, BR 816L100RP, BR 816L75RP, BR 816L50RP, OR BR 816L25RP BREAKERS FOR ALL OF THE WIRE WHEN THE WIRE IS 1/0 TO 14 AWG OR 2/0 TO 14 AWG.

TERMINALS OF INTERRUPTOR NOT TO BE USED AS TERMINALS FOR OTHER DEVICES. CONSULT TO THE MANUFACTURER'S LITERATURE FOR WIRE SIZES AND TERMINATION INFORMATION.

BREAKER HANDLE IN AN OPEN POSITION INDICATES BREAKER IS OPEN. TO RETURN SERVICE, MOVE HANDLE TO EXTREME "OFF" POSITION TO OPEN THE HANDLE OF INTERRUPTOR FROM POSITION NOW INDICATING THAT THE INTERRUPTOR IS IN AN OPEN POSITION. PARA REANUDAR EL SERVICIO, MUEVA EL MANEJO A SU POSICIÓN DE CIERRE.

FOR USE WITH AN HQP-1 TYPE 10 SERVICE ENTRANCE MAIN BREAKER, INSTALL THE BREAKER IN A TRACKS OR OVER THE HOLE FOR THE MAIN BREAKER. PARA INTERRUPTORES PRINCIPALES DE ENTRADA DE CORRIENTE TIPO 10, HQP-1 TIPO 10, INSTALE EL KIT DE PARRASAS E INCASAS POR DOBLADO PARA INTERRUPTORES PRINCIPALES DE 100 A.

FOR INFORMATION REFER TO THE FOLLOWING MANUFACTURER'S LITERATURE: CONTACT THE MANUFACTURER FOR THE FOLLOWING INFORMATION:

Modelo de la cubierta	Clasificación de corriente
BR 1750 125	125 A
BR 1750 100	100 A
BR 1750 75	75 A
BR 1750 50	50 A
BR 1750 25	25 A



FOR USE WITH THE FOLLOWING SERVICE EQUIPMENT, REFER TO THE FOLLOWING INFORMATION:

WIRE SIZE	US IN (IN-AM)	US IN (IN-BS)
#12-10	12-10 AWG	12-10 AWG
#8	8 AWG	8 AWG
#6-4	6-4 AWG	6-4 AWG
#3-2	3-2 AWG	3-2 AWG

TO CLOSE UNPAID OPENINGS IN COVER, USE EATON CAT. NO. 800P. PARA CERRAR LAS ABERTURAS NO PAGADAS EN LA CUBIERTA, USE EATON CAT. NO. 800P.

SUITABLE FOR USE AS SERVICE EQUIPMENT WHEN A MAIN BREAKER IS USED OR WHEN NOT USED WITH SERVICE EQUIPMENT. THIS BREAKER IS PROVIDED AND WHEN NOT USED AS A LIGHTING AND APPLIANCE PANELBOARD.

APTO PARA USO COMO EQUIPO DE SERVICIO CUANDO SE UTILIZA UN INTERRUPTOR PRINCIPAL O CUANDO NO SE PROPORCIONA NI SE USA COMO UN PANEL DE ILUMINACIÓN Y APARATOS.

THIS DEVICE ACCEPTS EATON TYPE 3R GROUND BARS. WIRE HOLDERS ARE SUITABLE FOR 1/0 TO 14 AWG OR 2/0 TO 14 AWG.

ESTE DISPOSITIVO ACEPTA BARRAS DE TIERRA TIPO 3R EATON. LOS AGUJEROS DE ALAMBRE SON ADECUADOS PARA 1/0 A 14 AWG O 2/0 A 14 AWG.

WHEN A MAIN BREAKER IS BACK FEED, HOLD DOWN SCREW KIT (EATON CAT. NO. 80002) IS REQUIRED.

CUANDO UN INTERRUPTOR PRINCIPAL ESTE ATENDIDO XITRE CORRIENTE DE SUSE CON EATON CAT. NO. 8000223 SE REQUIERE KIT DE TUERNOS DE SUJECIÓN.

FOR MORE INFORMATION, CONTACT THE MANUFACTURER'S SERVICE DEPARTMENT AT 1-800-451-7273.

PARA MÁS INFORMACIÓN, CONTACTE AL SERVICIO AL CLIENTE EN EL NÚMERO DE TELÉFONO QUE SE ENCUENTRA EN LA PARTE TRASERA DE LA CUBIERTA.

FOR INFORMATION, CONTACT THE MANUFACTURER'S SERVICE DEPARTMENT AT 1-800-451-7273.

PARA MÁS INFORMACIÓN, CONTACTE AL SERVICIO AL CLIENTE EN EL NÚMERO DE TELÉFONO QUE SE ENCUENTRA EN LA PARTE TRASERA DE LA CUBIERTA.

FOR INFORMATION, CONTACT THE MANUFACTURER'S SERVICE DEPARTMENT AT 1-800-451-7273.

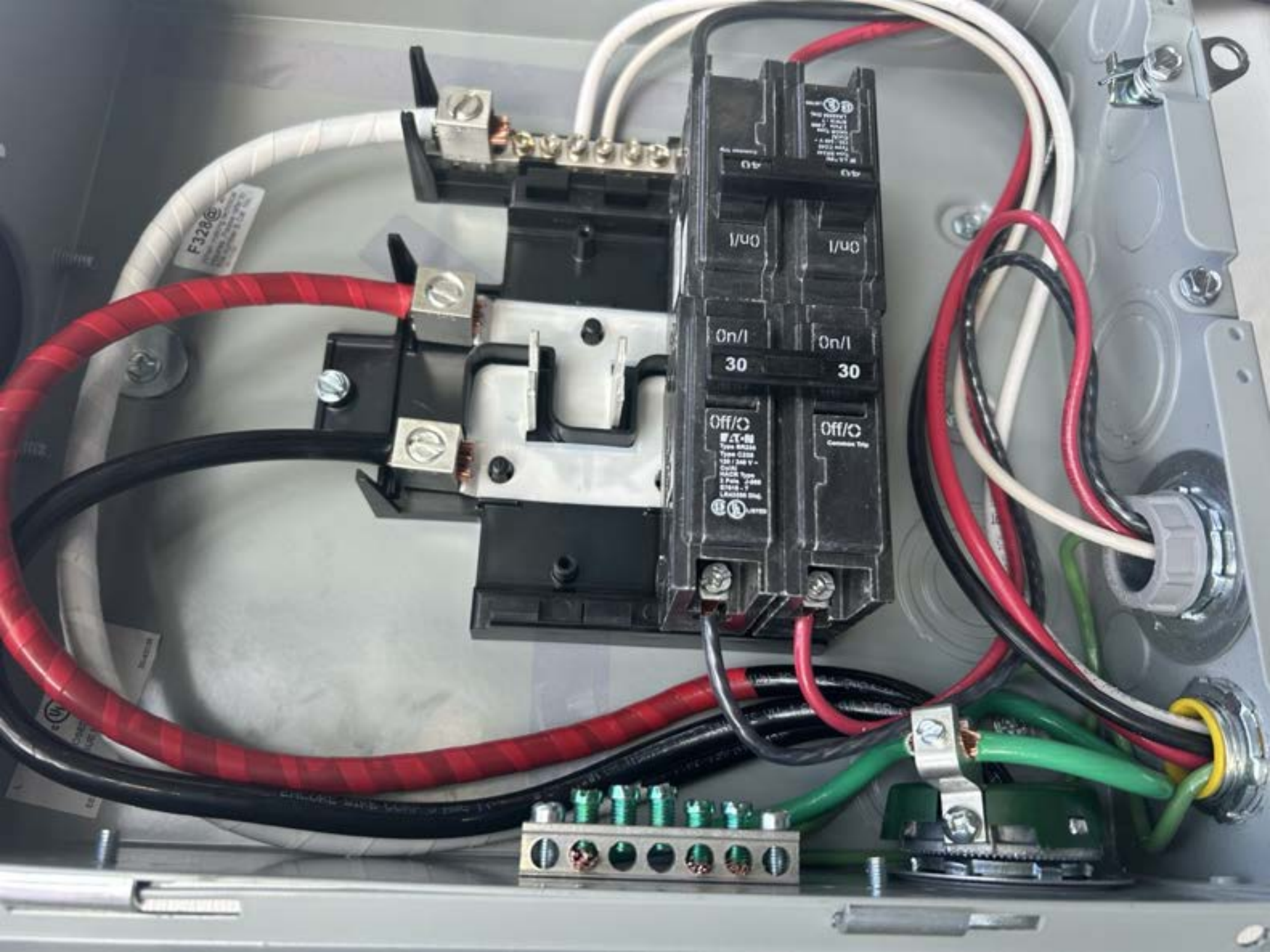
PARA MÁS INFORMACIÓN, CONTACTE AL SERVICIO AL CLIENTE EN EL NÚMERO DE TELÉFONO QUE SE ENCUENTRA EN LA PARTE TRASERA DE LA CUBIERTA.

FOR INFORMATION, CONTACT THE MANUFACTURER'S SERVICE DEPARTMENT AT 1-800-451-7273.

PARA MÁS INFORMACIÓN, CONTACTE AL SERVICIO AL CLIENTE EN EL NÚMERO DE TELÉFONO QUE SE ENCUENTRA EN LA PARTE TRASERA DE LA CUBIERTA.







F32R

Off/O  
W-T-8  
Type Q220  
Type Q220  
120/240 V -  
Single Phase  
3 Pole, 3 Pole  
Breaker  
100% RATED  
UL LISTED

Off/O  
Common Trip







INVERTER  
#1



SOLAR PV BREAKER  
BREAKER IS BACKFED  
DO NOT RELOCATE

INVERTER  
#2

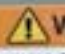


SOLAR PV BREAKER  
BREAKER IS BACKFED  
DO NOT RELOCATE





 **CAUTION**   
SOLAR ELECTRIC SYSTEM CONNECTED

 **WARNING**  
DUAL POWER SUPPLY  
SOURCES: UTILITY GRID  
AND PV SOLAR  
ELECTRIC SYSTEM

**RAPID SHUTDOWN  
SWITCH FOR  
SOLAR PV SYSTEM**

 **WARNING**  
POWER SOURCE  
OUTPUT CONNECTION  
DO NOT RELOCATE THIS  
OVERCURRENT DEVICE

**SOLAR POINT OF INTERCONNECTION**









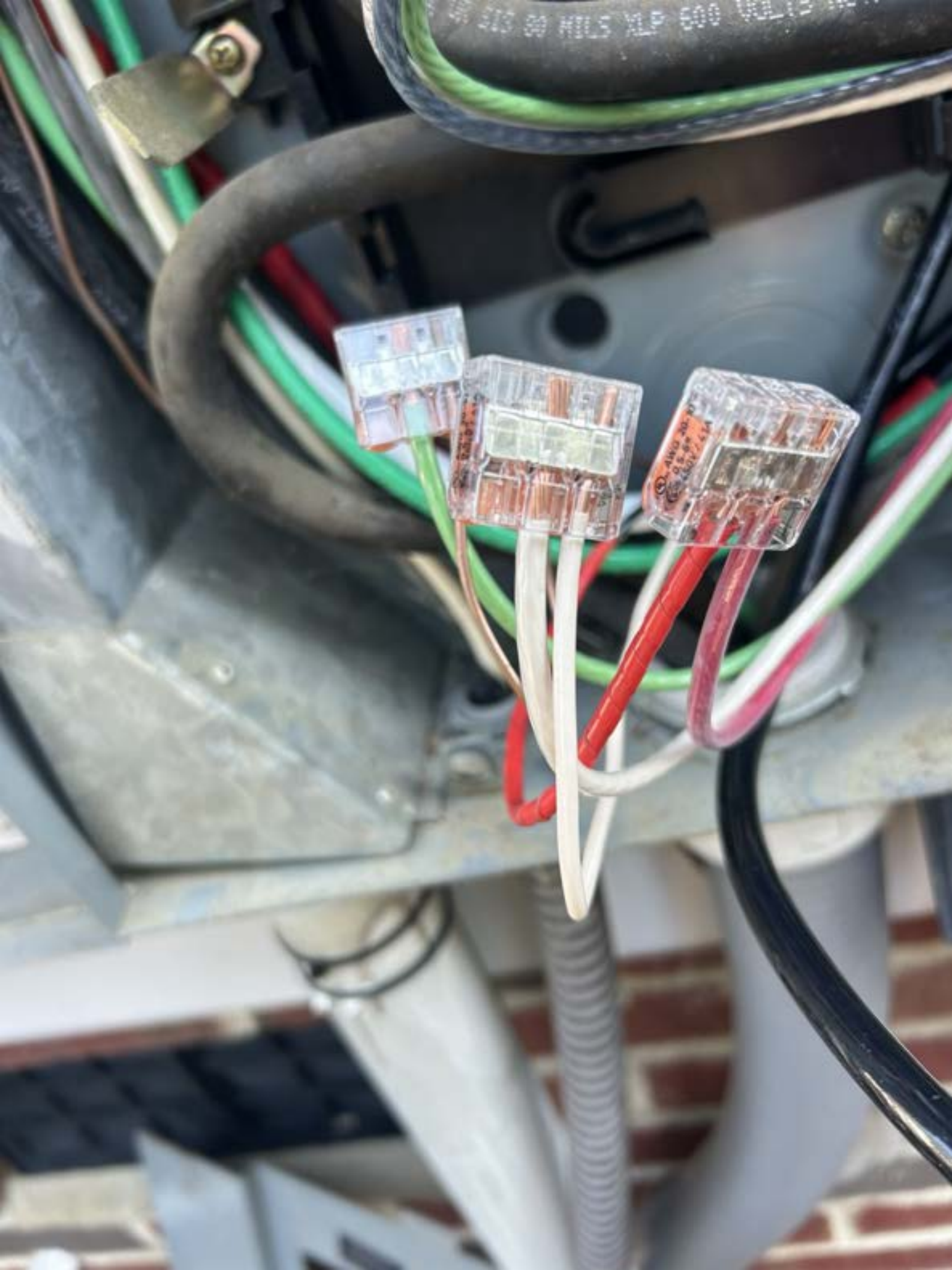


Orange safety label on the central metal rail with the text "Do not touch the DC disconnect switch".

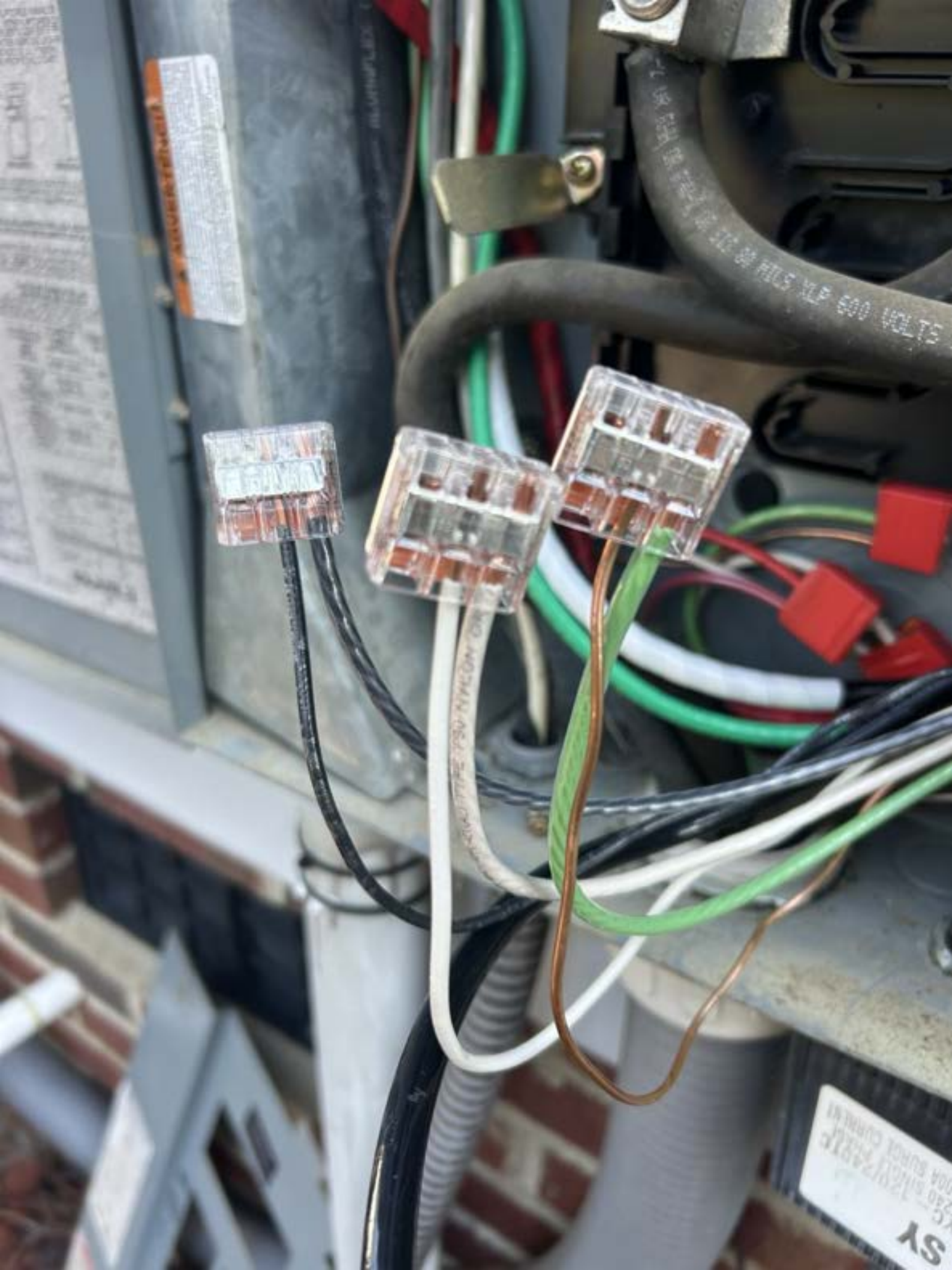
Warning tag on the left DC disconnect switch with the text "DO NOT OPERATE".

Warning tag on the right DC disconnect switch with the text "DO NOT OPERATE".









ELECTRICAL

500 VOLTS

500 VOLTS

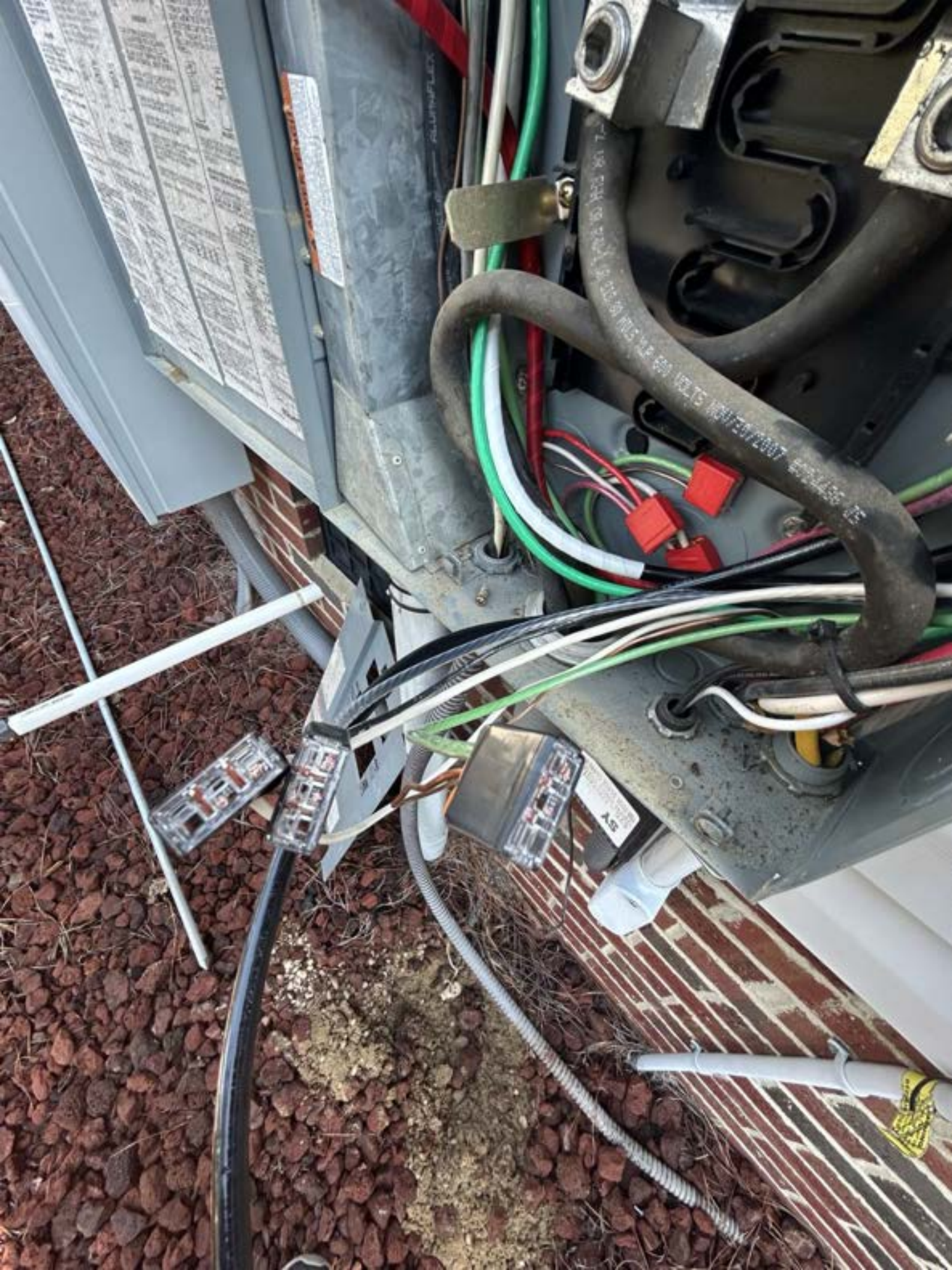
PSU NYLON

SY  
120/240V  
250 AMP  
100 AMP

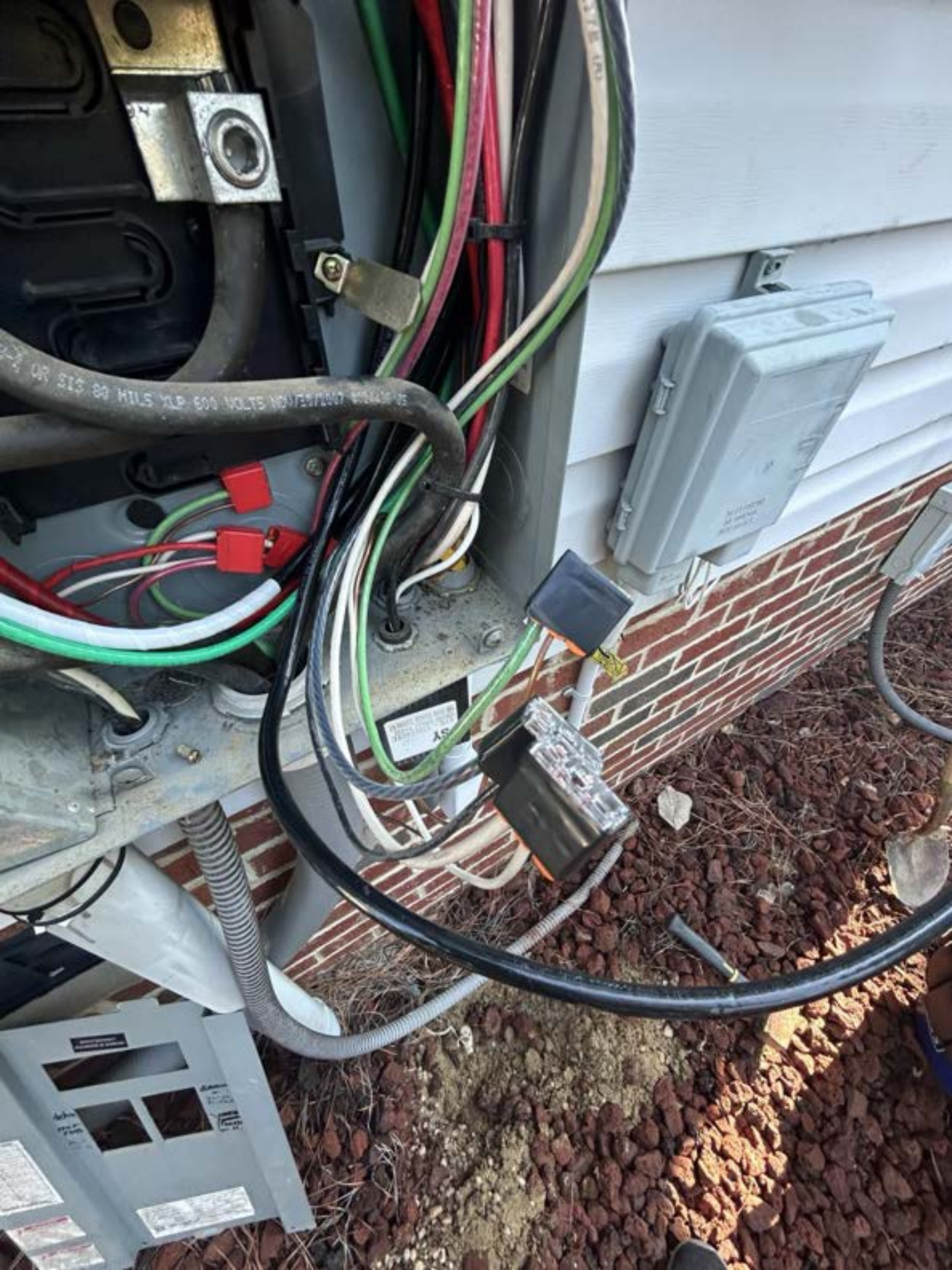












OR SIS 89 MILS XLP 600 VOLTS NOV/07/2007

AS



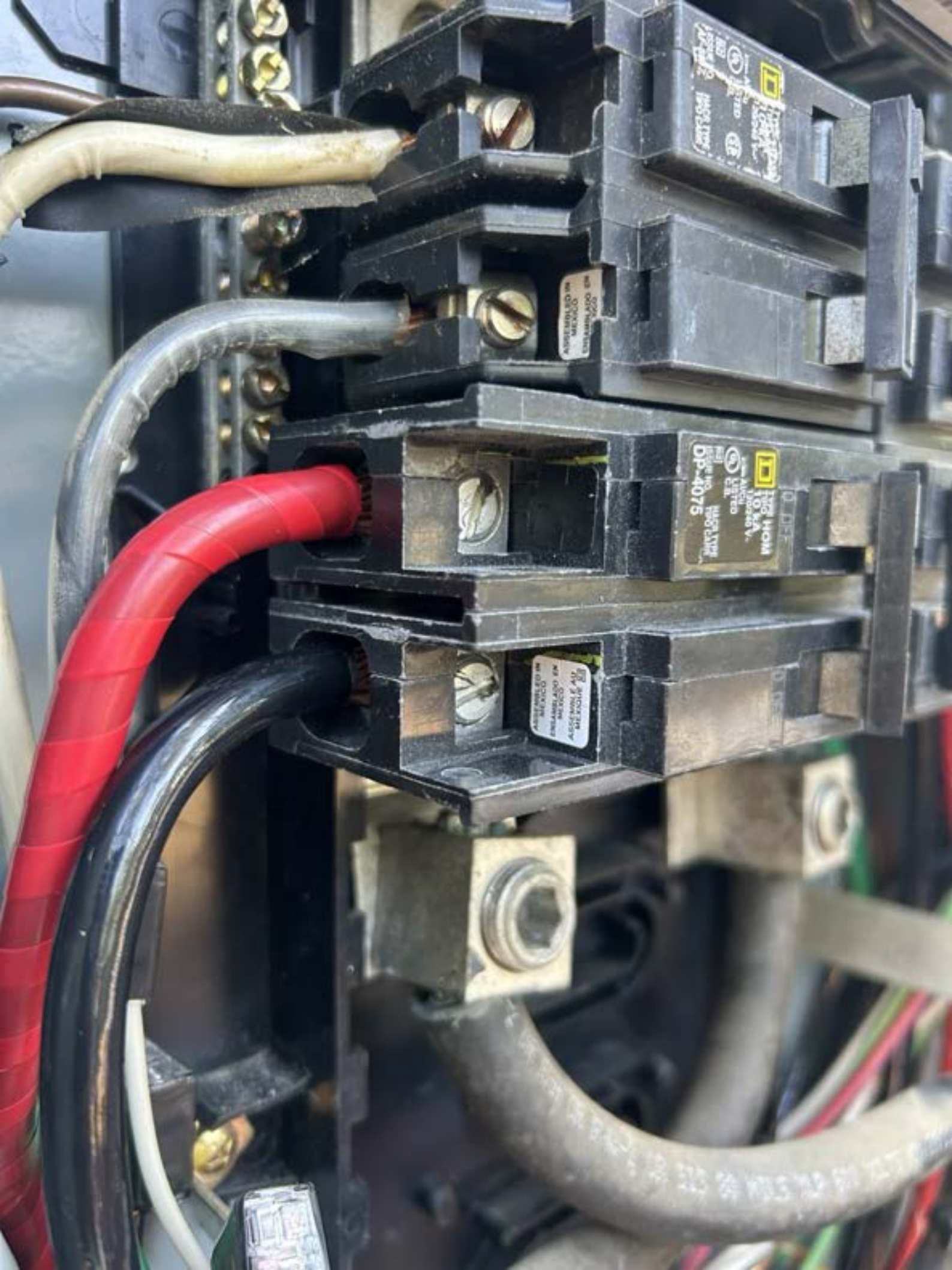
6000 3R 2444-2 OR 515 80 MILS XLP 600 VOLTS NOV/98/200



C/OFF

6000 3R 2444-2 OR 515 80 MILS XLP 600 VOLTS NOV/98/200





10 KA  
Type HOM  
10 KA  
DP-4075  
Assembled in Mexico  
ELECTRO  
ELECTRICAL  
EQUIPMENT  
CORPORATION  
MEXICO

ASSEMBLED IN MEXICO  
ELECTRO  
EQUIPMENT  
CORPORATION  
MEXICO

10 KA  
Type HOM  
10 KA  
DP-4075  
Assembled in Mexico  
ELECTRO  
ELECTRICAL  
EQUIPMENT  
CORPORATION  
MEXICO

ASSEMBLED IN MEXICO  
ELECTRO  
EQUIPMENT  
CORPORATION  
MEXICO



# SQUARE D METER MAIN

## COMBINATION SERVICE ENTRANCE DEVICE

### CUSTOMER OWNED EQUIPMENT

CAT. NO.	SERIES
RC816F100CH	M01
RC816F125CH	M01
RC816F150C	M01
RC816F150CH	M01
RC816F200C	M01
RC816F200CH	M01

RAINFROOF TYPE 3R ENCLOSURE

**MAIN 200 AMP MAX.**  
SEE SERVICE DISCONNECT FOR RATING  
120/240 VAC, 1 PH, 3 W, 60-60 Hz  
208Y/120 VAC, 1 PH, 3 W, 60-60 Hz  
FROM A 3 PH, 4 W SYSTEM  
**METER SOCKET RATED 200 AMP**  
CONTINUOUS

SUITABLE FOR UNDERGROUND OR  
OVERHEAD SERVICE

**SUITABLE FOR USE WITH 75°C**  
COPPER OR ALUMINUM LINE  
AND FEED THROUGH  
CONDUCTORS.

SEE BRANCH BREAKERS FOR BRANCH  
WIRE RATINGS

TO DISCONNECT ALL LOAD CONDUCTORS  
FROM THE SUPPLY CONDUCTORS, TURN  
OFF CIRCUIT BREAKER HANDLE MARKED  
SERVICE DISCONNECT.

LINE TERMINALS SUITABLE FOR NO. 8 AWG  
TO 350 kvcm<sup>2</sup> WIRE. FEED THROUGH LUGS  
ARE SUITABLE FOR NO. 4 XWG TO 250 kvcm<sup>2</sup>  
WIRE

**TORQUE NOTE: WHEN MAIN BREAKER OR**  
FEED THROUGH LUG CONNECTION  
MOUNTING NUTS ARE LOOSENED OR  
REMOVED, RETIGHTEN TO T8LB-IN  
TORQUE

#### ACCESSORIES

ALL UNUSED NEUTRAL TERMINALS MAY BE  
USED FOR TERMINATING EQUIPMENT  
GROUNDING WIRES. WHEN SEPARATE  
GROUNDING BAR KIT IS REQUIRED, ORDER  
CAT. NO. PK197A

FOR TERMINATING NEUTRAL CONDUCTOR  
LARGER THAN #4, ORDER CAT. NO. LK100AN

WHEN 5TH JAW KIT IS REQUIRED, ORDER  
CAT. NO. 5J

WHEN HORN BYPASS KIT IS REQUIRED,  
ORDER CAT. NO. R048Z

USE UL LISTED RAIN/TIGHT OR LIQUID TIGHT  
HOUS FOR CONDUIT ENTRY ABOVE CURRENT  
CARRYING PARTS

WHEN GENERATOR KIT IS REQUIRED, ORDER  
CAT. NO. R008Z

NEUTRAL LUG KIT LK225AN

A TOP FLOORING CAP IS INCLUDED. WHEN A  
HUB IS REQUIRED FOR SERVICE ENTRANCE,  
ORDER THE FOLLOWING:

CONDUIT	1 1/2"	2"	2 1/2"	3"
SQUARE D CAT. NO.	A197A	A198A	A199A	A200A
LOUISIANA CAT. NO.	425A	426A	427A	428A

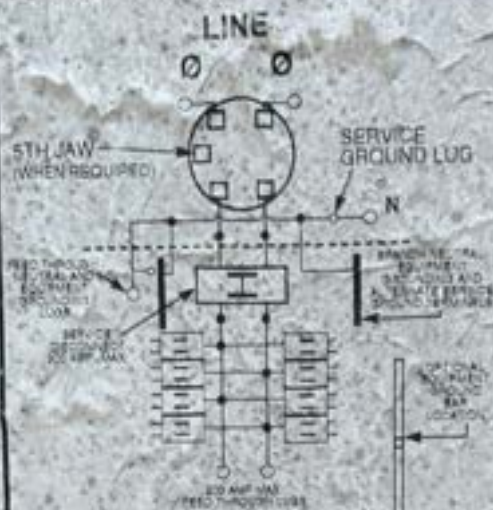
FOR REPLACEMENT PARTS, CONTACT THE  
LOCAL SQUARE D SALES OFFICE

**SHORT CIRCUIT CURRENT RATING:**  
25,000 RMS SYMMETRICAL AMPERES AT  
120/240 VAC MAXIMUM WITH TYPE COMB  
METER. 15,000 SYMMETRICAL WITH 25,000  
AMPERES INTERRUPTING RATING AND  
TYPE HORN OR HORN BRANCH CIRCUIT  
BREAKERS (WITH 10,000 AMPERES  
INTERRUPTING RATING)

WITH/OUT METER NOT INCLUDED IN  
SHORT CIRCUIT CURRENT RATING

ADDITIONAL OR REPLACEMENT BRANCH  
CIRCUIT BREAKERS MUST HAVE AN  
INTERRUPTING RATING EQUAL TO OR  
GREATER THAN THAT OF THE CIRCUIT  
BREAKER IN THE SERVICE ENTRANCE  
RATING. REPLACEMENT PARTS  
DISCONNECTS MUST HAVE AN INTERRUPTING  
RATING EQUAL TO OR GREATER THAN  
THE DISCONNECT PRESENTLY  
INSTALLED

**SUITABLE ONLY FOR USE AS  
SERVICE EQUIPMENT**



TWO-POLE TYPE, ONE-POLE TYPE, AND  
HORN BYPASS KIT IS REQUIRED. ORDER  
CAT. NO. R048Z

A SQUARE D UL LISTED SECONDARY SURGE ARRESTER  
MAY BE USED ON TWO ADJACENT SPACES. ORDER CATALOG  
NUMBER HOM21788B

USE ONLY SQUARE D TYPE HOM, HOMA, OR HON  
BRANCH CIRCUIT BREAKERS. DO NOT SERVICE DISCONNECT  
AND REPLACEMENT PARTS WITH THIS PRODUCT  
USE OF OTHER COMPONENTS voids the warranty.  
MAY VOID THE WARRANTY AND MAY RESULT IN  
PROPERTY LOSS OR PERSONAL INJURY



HANDLE AT MID POSITION SHOWS  
BREAKER IS TRIPPED. TO RESET,  
MOVE HANDLE TO OFF POSITION,  
THEN TO ON POSITION

REMOVE TWISTOUTS ONLY AS NEEDED WHEN CIRCUITS  
ARE INSTALLED

CLOSE UNUSED CIRCUIT BREAKER OPENING WITH FILLER  
PLATES. ORDER CATALOG NO. HOMFP. EACH FILLER  
PLATE CLOSURES ONE POLE BRANCH BREAKER OPENING

**LUG TORQUE DATA**  
SEE CIRCUIT BREAKERS AND FIELD  
INSTALLED UNITS FOR WIRE BONDING  
SCREW TORQUES

WIRE RANGE (AWG)	WIRE RANGE (mm <sup>2</sup> )	TORQUE LB-IN
LIVE LUGS (PHASE AND NEUTRAL)	6-36 CU/AL	280
SERVICE GROUND LUG	18-30 CU 12-30 AL	90
FEED THROUGH LUGS (PHASE AND NEUTRAL)	4-250 CU/AL	280
FEED THROUGH EQUIPMENT GROUNDING LUG	14-250 CU 12-250 AL	90

BRANCH NEUTRAL AND EQUIPMENT GND (AL)	WIRE RANGE (AWG)	TORQUE (LB-IN)
1	8-4 CU/AL	90
2	8 CU/AL	90
3	14-18	25
4	14-18	25
5	14-18	25
6	14-18	25
7	14-18	25
8	14-18	25
9	14-18	25
10	14-18	25
11	14-18	25
12	14-18	25
13	14-18	25
14	14-18	25
15	14-18	25
16	14-18	25
17	14-18	25
18	14-18	25
19	14-18	25
20	14-18	25
21	14-18	25
22	14-18	25
23	14-18	25
24	14-18	25
25	14-18	25
26	14-18	25
27	14-18	25
28	14-18	25
29	14-18	25
30	14-18	25
31	14-18	25
32	14-18	25
33	14-18	25
34	14-18	25
35	14-18	25
36	14-18	25
37	14-18	25
38	14-18	25
39	14-18	25
40	14-18	25
41	14-18	25
42	14-18	25
43	14-18	25
44	14-18	25
45	14-18	25
46	14-18	25
47	14-18	25
48	14-18	25
49	14-18	25
50	14-18	25
51	14-18	25
52	14-18	25
53	14-18	25
54	14-18	25
55	14-18	25
56	14-18	25
57	14-18	25
58	14-18	25
59	14-18	25
60	14-18	25
61	14-18	25
62	14-18	25
63	14-18	25
64	14-18	25
65	14-18	25
66	14-18	25
67	14-18	25
68	14-18	25
69	14-18	25
70	14-18	25
71	14-18	25
72	14-18	25
73	14-18	25
74	14-18	25
75	14-18	25
76	14-18	25
77	14-18	25
78	14-18	25
79	14-18	25
80	14-18	25
81	14-18	25
82	14-18	25
83	14-18	25
84	14-18	25
85	14-18	25
86	14-18	25
87	14-18	25
88	14-18	25
89	14-18	25
90	14-18	25
91	14-18	25
92	14-18	25
93	14-18	25
94	14-18	25
95	14-18	25
96	14-18	25
97	14-18	25
98	14-18	25
99	14-18	25
100	14-18	25

**SQUARE D**

# SQUARE D

## DISPOSITIVO DE ENTRADA

### EQUIPO COMPRA

NO. DE CATALOGO	SERIE
RC816F100CH	M01
RC816F125CH	M01
RC816F150C	M01
RC816F150CH	M01
RC816F200C	M01
RC816F200CH	M01

CAJA A PRUEBA DE LLUVIA TIPO 3R  
**CONDUCTORES PRINCIPALES POR AMP MÁXIMO**  
VEA EL DESCONECTOR DE SERVICIO PARA  
LA CLASIFICACIÓN

**ENCLOSURE DEL MEDIDOR CLASIFICADO A 200**  
AMP. CONTINUO  
120/240 V - 1 PH, 3 W, 60-60 Hz  
208Y/120 V - 1 PH, 3 W, 60-60 Hz  
(DE UN SISTEMA DE 3 FASES Y 4 NEUTROS)

ADECUADO PARA UTILIZACIÓN EN SERVICIO  
SUBTERRANEO O ELIVADO

ADECUADO PARA USAR CON LINEAS  
CONDUCTORAS DE 75°C DE COBRE O  
ALUMINIO Y CONDUCTORES PASANTES.

VEA EL INTERRUPTOR RAMAL PARA LA  
CLASIFICACIÓN DE ALAMBRE RAMAL

PARA DESCONECTAR TODOS LOS  
CONDUCTORES DE CARGA DE LOS  
CONDUCTORES DE SUMINISTRO, APAGUE LA  
MANEJA DEL INTERRUPTOR OIF MARCADO  
SERVICIO DISCONNECT

TERMINALES DE LINEA ADECUADAS PARA  
CABLE NO. 8 AWG A 350 kvcm<sup>2</sup>. LAS TERMINALES  
DE ALIMENTACIÓN SON APROPIADAS PARA  
CABLE DE 4 AWG A 250 kvcm<sup>2</sup>

NOTA DE PAR DE APRIETE: CUANDO SE HAYAN  
AFLOJADO O RETIRADO LAS TUERCAS DE  
MONTAJE DEL INTERRUPTOR AUTOMÁTICO O  
DEL CONECTOR DE LAS ZAPATAS DE PASO,  
VUELVALAS A APRIETAR A 8.47 NM (75 LBS-  
FUTS)

#### ACCESORIOS

TODAS LAS TERMINALES NEUTRALES  
UTILIZADAS PUEDEN SER USADAS PARA  
TERMINAR CABLES DE TIERRA DEL EQUIPO.  
REQUIERA UN KIT DE BARRAS DE TIERRA  
SEPARADAS. PIDA EL NO. DE CAT. PK197A

PARA TERMINAR CONDUCTORES DE NEUTRO  
MAYORES QUE #4, SOLICITE EL ACCESORIO  
NÚMERO DE CATALOGO LK100AN

CUANDO SE REQUIERA UN KIT DE QUINTA  
QUILADA, PIDA EL NO. DE CAT. 5J

CUANDO SE REQUIERA JUEGO DE DESVIO DE  
BOCINA, PIDA NO. DE CAT. R048Z

UTILICE ENCLOSURE DE CONEXIÓN CONTRA LLUVIA  
O LUG DE CLASIFICACIÓN DE PARA  
CONDUCTOS DE ENTRADA QUE LISTEN ARRIBA  
DEL NIVEL DE PARTES QUE CONDUJEN  
CORRIENTE

CUANDO NECESITE EL ACCESORIO DE CAMBIO AL  
GENERADO, SOLICITE EL NO. DE CAT. R05KZ

ACCESORIO DE ZAPATA DE NEUTRO LK225AN

LISTA DE CABLES Y CONECTORES PARA SERVICIO SUBTERRANEO O ELIVADO DE ENTRADA ADECUADA REQUERIDA

CONDUIT	1 1/2"	2"	2 1/2"	3"
CONDUIT	A197A	A198A	A199A	A200A
CONDUIT	425A	426A	427A	428A

PARA PARTES DE REPUESTO, COMUNIQUESE  
CON LA OFICINA DE VENTAS LOCAL DE SQUARE D

**CAPACIDAD NOMINAL DE CORRIENTE DE**  
CONDUCTORCIRCUITO  
92,000 AMPERES RÁFIDOS PPM A 120/240 V-  
COMO MÁXIMO CON UN SECCIONADO DE  
APRIETE DE 1000 COMBACIONES Y CON  
UN INTERRUPTOR DE 25,000 AMPERES Y CON  
UN INTERRUPTOR DE 10,000 AMPERES DERIVADOS  
TIPO NOMINADO CON CAPACIDAD  
INTERRUPTORA DE 15,000 AMPERES

MEDIDOR DE WATT-HORA NO ESTÁ INCLUIDO EN  
LA CLASIFICACIÓN DE CORRIENTE DE CORTO-  
CIRCUITO

LOS INTERRUPTORES RAMALES ADICIONALES O  
DE REPUESTO DEBEN TENER UN GRADO DE  
INTERIOR O UN GRADO EXTERIOR O UN  
GRADO DE INTERIOR CON EL MENOR GRADO DE  
INTERIOR. Y A LA VEZ, EL  
DESCONECTOR DE SERVICIO DEBE TENER UN  
GRADO DE INTERIOR O UN GRADO EXTERIOR O  
UN GRADO DE SERVICIO O MAYOR QUE  
EL DEL DESCONECTOR DE SERVICIO YA  
INSTALADO

ADECUADO SOLAMENTE PARA USARSE  
COMO EQUIPO DE SERVICIO



365 739 893  
BLAUBERG  
Landis + Gyr

**WARNING**  
DUAL POWER SUPPLY  
SOURCES: UTILITY GRID  
AND PV SOLAR  
ELECTRIC SYSTEM

PHOTOVOLTAIC  
SYSTEM kWh METER

**CAUTION**  
SOLAR ELECTRIC SYSTEM CONNECTED



**WARNING**  
DUAL POWER SUPPLY  
SOURCES: UTILITY GRID  
AND PV SOLAR  
ELECTRIC SYSTEM

RELEASE LATCH  
MOVE FOOT DOWN  
OPEN DOOR

CLOSE DOOR  
LIFT FOOT UP  
ENGAGE LATCH

SY

**CAUTION**  
SEE AN ELECTRIC SYSTEM CONNECTOR



**WARNING**  
DANGER OF ELECTRIC SHOCK  
DO NOT OPEN COVER  
UNLESS YOU ARE  
A QUALIFIED ELECTRICIAN

PHOTOVOLTAIC  
SYSTEM kWh METER

**CAUTION**  
SEE AN ELECTRIC SYSTEM CONNECTOR



**WARNING**  
DANGER OF ELECTRIC SHOCK  
DO NOT OPEN COVER  
UNLESS YOU ARE  
A QUALIFIED ELECTRICIAN



**WARNING**  
DANGER OF ELECTRIC SHOCK  
DO NOT OPEN COVER  
UNLESS YOU ARE  
A QUALIFIED ELECTRICIAN



TELEPHONE  
NETWORK  
INTERFACE

AS





CAUTION









CAUTION

DANGER









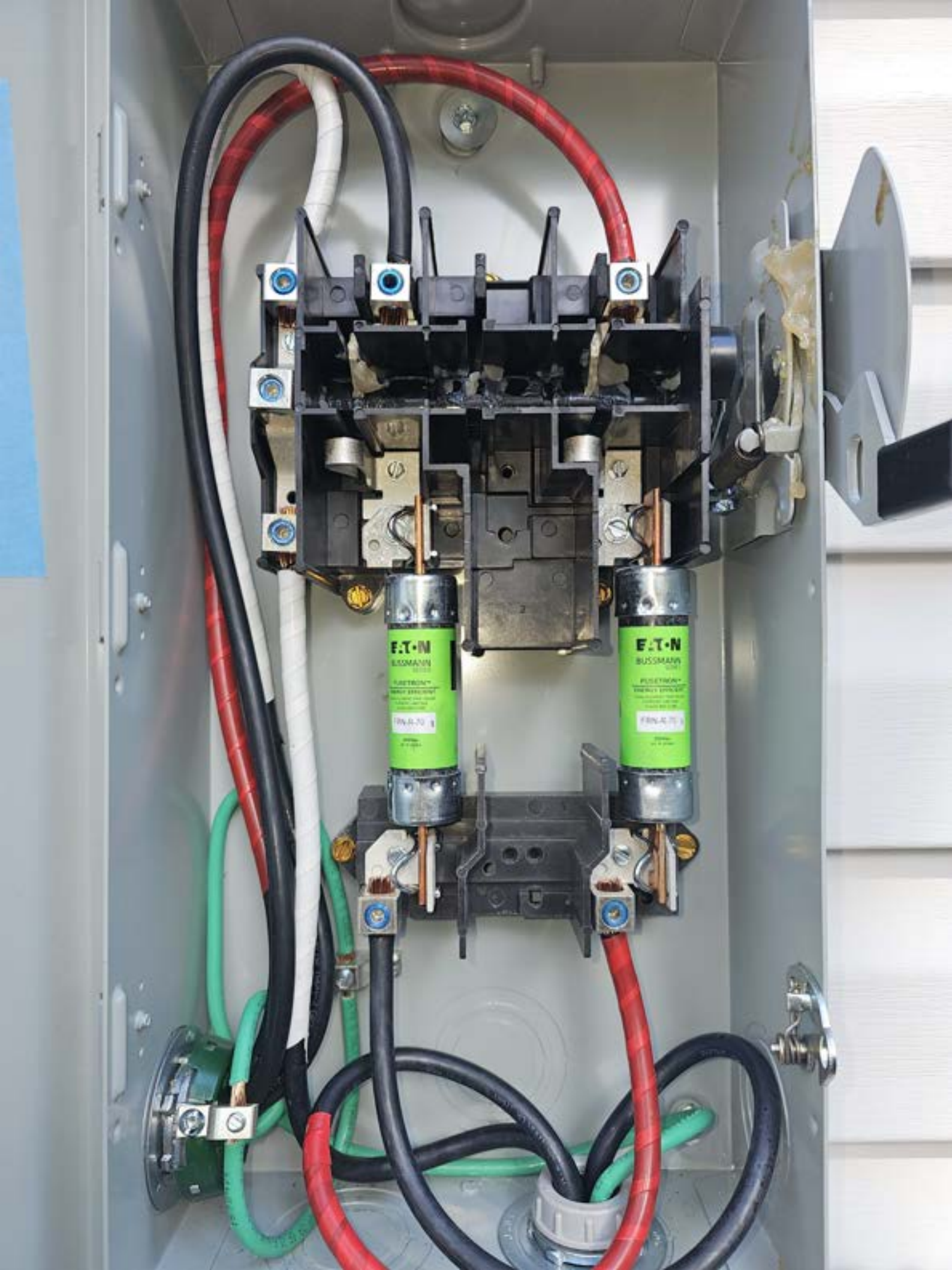
















**EATON**  
BUSSMANN  
SERIES

FUSETRON™  
ENERGY EFFICIENT  
DUAL-ELEMENT TIME-DELAY  
CURRENT LIMITING  
CLASS RK5 FUSE

FRN-R-70

250Vac  
AC IR 200kA

2

**EATON**  
BUSSMANN  
SERIES

FUSETRON™  
ENERGY EFFICIENT  
DUAL-ELEMENT TIME-DELAY  
CURRENT LIMITING  
CLASS RK5 FUSE

FRN-R-70

250Vac  
AC IR 200kA









**Jinko Solar**  
The Trust in Solar

Jinko Solar Co., Ltd.  
No. 1, Tiegang Road, Economic Development Zone  
Shanghai City, 201400 Shanghai, P.R. China  
www.jinkosolar.com

**PHOTOVOLTAIC MODULE**  
Manufactured in Vietnam  
Assembled in the USA from solar cells made in Vietnam

Module Type	JKM390M-72HBL-V
Maximum Power (P <sub>max</sub> )	390W
Power Tolerance	±3%
Maximum Power Voltage (V <sub>mp</sub> )	38.64V
Maximum Power Current (I <sub>mp</sub> )	9.86A
Open Circuit Voltage (V <sub>oc</sub> )	46.00V ±3%
Short Circuit Current (I <sub>sc</sub> )	10.46A ±4%
Maximum System Voltage	1000VDC
Maximum System Current	25A
Power Tolerance	±3%
Protection Class	IP67
Fire Class	Type I (UL61730) Class C (IEC61730)
Weight	21.0kg
Dimensions (mm)	1750 × 1050 × 40
STC	1000W/m <sup>2</sup> , AM1.5, 25°C
Current Tolerance	±1%

**UL US LISTED**  
UL LISTED

**CE**

**WARNING**  
This product should be installed in accordance with the instructions provided for the product.  
This product should be installed in accordance with the instructions provided for the product.  
This product should be installed in accordance with the instructions provided for the product.  
This product should be installed in accordance with the instructions provided for the product.  
This product should be installed in accordance with the instructions provided for the product.

**AVERTISSEMENT**  
Ce produit doit être installé conformément aux instructions fournies pour le produit.  
Ce produit doit être installé conformément aux instructions fournies pour le produit.  
Ce produit doit être installé conformément aux instructions fournies pour le produit.  
Ce produit doit être installé conformément aux instructions fournies pour le produit.  
Ce produit doit être installé conformément aux instructions fournies pour le produit.

Barcode and QR code.





B

12V 100Ah













(855) 997-1213  
Serving the Southeast

GREEN  
WINE COOK





















































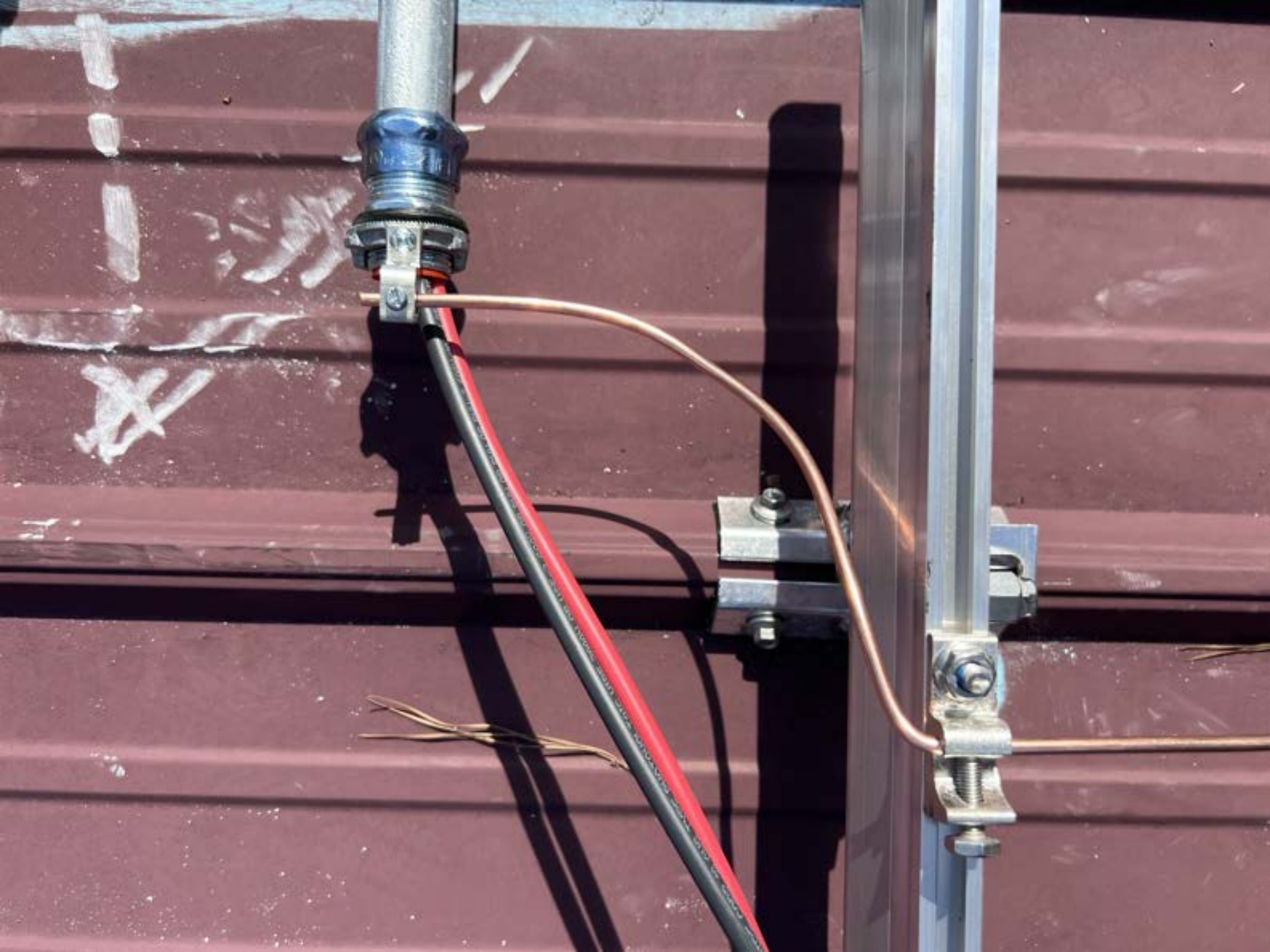
















**CAUTION**

MUST BE INSTALLED TO PROTECT THE  
WIRE FROM DAMAGE. DO NOT TOUCH  
THE WIRE OR ELECTRICAL CONNECTIONS  
WHEN THE SYSTEM IS ENERGIZED. DO  
NOT TOUCH THE WIRE OR ELECTRICAL  
CONNECTIONS WHEN THE SYSTEM IS  
ENERGIZED. COVER PV MODULES WITH  
APPROPRIATE MATERIAL BEFORE CONNECTING OR DISCONNECTING THIS OPTIMIZER.  
DISCONNECT THE DC CIRCUIT BEFORE IT IS RECONNECTED INTO DC ARRAY BY CONNECTING  
THE OPTIMIZER TO THE DC CIRCUIT.

**WARNING** ELECTRIC SHOCK HAZARD: THE DC CONDUCTORS OF THIS PHOTOVOLTAIC  
SYSTEM ARE UNGROUNDING AND MAY BE ENERGIZED.

**AVERTISSEMENT**

RISQUE DE CHOC ÉLECTRIQUE: QUAND LE CHAMP  
PHOTOVOLTAÏQUE EST EXPOSÉ À LA LUMIÈRE, UNE  
TENSION DC EST FOURNIE À CET ÉQUIPEMENT.  
ÉVITER LES CONTACTS NE PAS TOUCHER, AFIN DE  
ÉVITER LES RISQUES DE BRÛLURES OU DE CHOC  
ÉLECTRIQUE EN CAS DE DÉFAILLANCE DANS LE MODULE PV EST  
TOUJOURS NE PAS TOUCHER.



SolarEdge Technologies Ltd  
Power Optimizer  
SolarEdge Technologies Limited  
Winnipeg, RMBN 2R6P1  
Manitoba, Canada

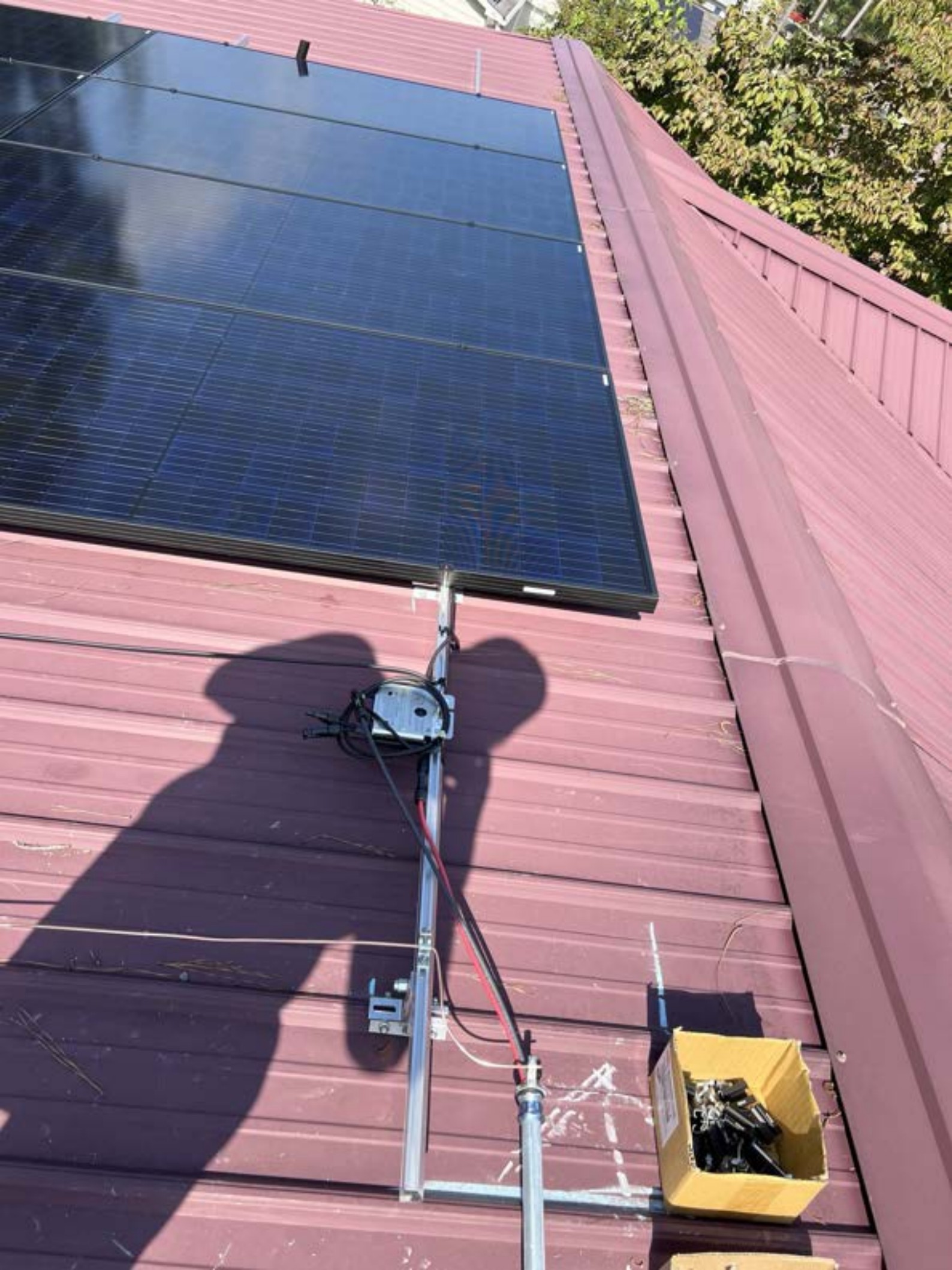


STOP!































EMT WHEATLAND TUBE WESTERN TUBE #124172 031 NENT MADE IN U.S.A.

























RCE

































E506326 PV WIRE 12AWG 105°C DRY 90°C WET 1000V OR 2000V SUN RES -40°C VW-1 DCM-GMEE



















































**CAUTION**  
HOT SURFACES-TO REDUCE THE RISK OF BURNS-DO NOT TOUCH. RISK OF ELECTRIC SHOCK-WHEN THE PHOTOVOLTAIC ARRAY IS EXPOSED TO LIGHT, IT SUPPLIES A DC VOLTAGE TO EQUIPMENT. COVER PV MODULE WITH OPAQUE MATERIAL BEFORE CONNECTING DURING FAULT, ZERO CURRENT IS SOURCED INTO DC ARRAY BY CONVERTER.

**WARNING** ELECTRIC SHOCK HAZARD. THE DC CONDUCTORS OF THIS PHOTOVOLTAIC SYSTEM ARE UNGROUNDED AND MAY BE ENERGIZED.

**AVERTISSEMENT**  
RISQUE DE CHOC ELECTRIQUE- QUAND LE CHAMP PHOTOVOLTAIQUE EST EXPOSE A LA LUMIERE, UNE TENSION CC EST FOURNIE A CET EQUIPEMENT. SURFACES CHAUDES- NE PAS TOUCHER, AFIN DE REDUIRE LES RISQUES DE BRULURES LE COURANT DE RETOUR INJECTE PAR LE CONVERTISSEUR EN CAS DE DEFAILLANCE DANS LE MODULE PV EST TOUJOURS NUL.

Do Not Remove  
17A86680-AR  
SolarEdge Technologies Ltd.  
SolarEdge Technologies GmbH/  
Werner-Eckert-Straße 6/81829 Munich/Germany



SolarEdge Technologies Ltd.  
Power Optimizer

SolarEdge Technologies GmbH/  
Werner-Eckert-Straße 6/81829  
Munich/Germany











CAUTION

Do not touch the button or the gold-colored connector. Touching the button or the gold-colored connector may cause a short circuit and damage the device. Do not use the device in wet or damp areas. Do not use the device near flammable or explosive materials. Do not use the device near high voltage power lines. Do not use the device near magnetic fields. Do not use the device near radio frequency fields. Do not use the device near electromagnetic interference. Do not use the device near other electronic devices. Do not use the device near children. Do not use the device near pets. Do not use the device near fire. Do not use the device near heat. Do not use the device near water. Do not use the device near oil. Do not use the device near grease. Do not use the device near dust. Do not use the device near dirt. Do not use the device near sand. Do not use the device near gravel. Do not use the device near rocks. Do not use the device near concrete. Do not use the device near brick. Do not use the device near masonry. Do not use the device near wood. Do not use the device near metal. Do not use the device near plastic. Do not use the device near paper. Do not use the device near fabric. Do not use the device near clothing. Do not use the device near shoes. Do not use the device near jewelry. Do not use the device near watches. Do not use the device near glasses. Do not use the device near contact lenses. Do not use the device near hearing aids. Do not use the device near dentures. Do not use the device near prosthetics. Do not use the device near medical equipment. Do not use the device near emergency equipment. Do not use the device near fire extinguishers. Do not use the device near fire alarms. Do not use the device near smoke detectors. Do not use the device near carbon monoxide detectors. Do not use the device near gas detectors. Do not use the device near motion detectors. Do not use the device near doorbells. Do not use the device near door locks. Do not use the device near door handles. Do not use the device near door hinges. Do not use the device near door frames. Do not use the device near door thresholds. Do not use the device near door seals. Do not use the device near door weatherstripping. Do not use the device near door sweeps. Do not use the device near door rollers. Do not use the device near door tracks. Do not use the device near door guides. Do not use the device near door stops. Do not use the device near door buffers. Do not use the device near door dampers. Do not use the device near door closers. Do not use the device near door openers. Do not use the device near door closers. Do not use the device near door openers. Do not use the device near door closers. Do not use the device near door openers.

AVERTISSEMENT

N'avez pas toucher le bouton ou le connecteur doré. Toucher le bouton ou le connecteur doré peut provoquer un court-circuit et endommager l'appareil. N'utilisez pas l'appareil dans des zones humides ou humides. N'utilisez pas l'appareil près de matériaux inflammables ou explosifs. N'utilisez pas l'appareil près de lignes à haute tension. N'utilisez pas l'appareil près de champs magnétiques. N'utilisez pas l'appareil près de champs radiofréquences. N'utilisez pas l'appareil près d'interférences électromagnétiques. N'utilisez pas l'appareil près d'autres appareils électroniques. N'utilisez pas l'appareil près des enfants. N'utilisez pas l'appareil près des animaux. N'utilisez pas l'appareil près du feu. N'utilisez pas l'appareil près de la chaleur. N'utilisez pas l'appareil près de l'eau. N'utilisez pas l'appareil près de l'huile. N'utilisez pas l'appareil près de la graisse. N'utilisez pas l'appareil près de la poussière. N'utilisez pas l'appareil près de la saleté. N'utilisez pas l'appareil près du sable. N'utilisez pas l'appareil près des cailloux. N'utilisez pas l'appareil près des rochers. N'utilisez pas l'appareil près du béton. N'utilisez pas l'appareil près de la brique. N'utilisez pas l'appareil près de la maçonnerie. N'utilisez pas l'appareil près du bois. N'utilisez pas l'appareil près du plastique. N'utilisez pas l'appareil près du papier. N'utilisez pas l'appareil près du tissu. N'utilisez pas l'appareil près des vêtements. N'utilisez pas l'appareil près des chaussures. N'utilisez pas l'appareil près des bijoux. N'utilisez pas l'appareil près des montres. N'utilisez pas l'appareil près des lunettes. N'utilisez pas l'appareil près des lentilles de contact. N'utilisez pas l'appareil près des aides auditives. N'utilisez pas l'appareil près des prothèses. N'utilisez pas l'appareil près de l'équipement médical. N'utilisez pas l'appareil près de l'équipement d'urgence. N'utilisez pas l'appareil près des extincteurs. N'utilisez pas l'appareil près des alarmes incendie. N'utilisez pas l'appareil près des détecteurs de fumée. N'utilisez pas l'appareil près des détecteurs de monoxyde de carbone. N'utilisez pas l'appareil près des détecteurs de gaz. N'utilisez pas l'appareil près des détecteurs de mouvement. N'utilisez pas l'appareil près des sonnettes. N'utilisez pas l'appareil près des serrures. N'utilisez pas l'appareil près des poignées de porte. N'utilisez pas l'appareil près des charnières de porte. N'utilisez pas l'appareil près des cadres de porte. N'utilisez pas l'appareil près des seuils de porte. N'utilisez pas l'appareil près des joints de porte. N'utilisez pas l'appareil près des brosses de porte. N'utilisez pas l'appareil près des rouleaux de porte. N'utilisez pas l'appareil près des guides de porte. N'utilisez pas l'appareil près des arrêts de porte. N'utilisez pas l'appareil près des amortisseurs de porte. N'utilisez pas l'appareil près des ferme-portes. N'utilisez pas l'appareil près des ouvre-portes. N'utilisez pas l'appareil près des ferme-portes. N'utilisez pas l'appareil près des ouvre-portes.





















48005-00011A  
8-00011A  
SC282-887





FC

**CAUTION**

READ INSTRUCTIONS TO THE USER'S MANUAL FOR THE PROPER USE OF THIS DEVICE. THIS DEVICE IS NOT TO BE USED IN A MANNER THAT IS NOT INTENDED BY THE MANUFACTURER. THE USER IS RESPONSIBLE FOR THE PROPER USE OF THIS DEVICE. THE USER IS RESPONSIBLE FOR THE PROPER USE OF THIS DEVICE. THE USER IS RESPONSIBLE FOR THE PROPER USE OF THIS DEVICE.

Trade-Name Technologies Ltd  
Product Support

**WARNING**

READ THE USER'S MANUAL FOR THE PROPER USE OF THIS DEVICE. THE USER IS RESPONSIBLE FOR THE PROPER USE OF THIS DEVICE. THE USER IS RESPONSIBLE FOR THE PROPER USE OF THIS DEVICE.

**AVERTISSEMENT**

RESENEE THE USER'S MANUAL FOR THE PROPER USE OF THIS DEVICE. THE USER IS RESPONSIBLE FOR THE PROPER USE OF THIS DEVICE. THE USER IS RESPONSIBLE FOR THE PROPER USE OF THIS DEVICE.







































28

Small rectangular label with illegible text.

















Handwritten text in blue ink, appearing to be the number "257".











24

25

















Small label with text and a logo, possibly a manufacturer's mark or safety warning.

2





2

Manufacturer's label with technical specifications and logos.





Handwritten scribbles in black ink on the white surface of the satellite dish.

Small printed label or sticker on the white surface of the satellite dish, partially visible in the bottom left corner.





22

Small white label with illegible text in the top left corner.









Handwritten mark resembling a checkmark or the number '7' on the white surface of the dish.

Small printed label on the white surface of the dish, containing technical specifications and a logo.







(855) 997-1213  
NS.COM







18

29

40

41

50

53

**Jinko Solar**  
SOLAR PANELS





P  
AR  
E  
E

16



8

17



8

18

8

19



8

20



8

Jinko Solar  
MAKING SOLAR WORK FOR YOU







Product label with technical specifications and safety information, including a barcode and various icons.

Handwritten mark resembling a stylized 'S' or a signature on the white surface.



















Small rectangular label on the white surface of the dish, containing technical specifications and a logo.

Handwritten mark or scribble on the white surface of the dish.

























Small rectangular label with illegible text and a barcode.

D

White electrical control box with two switches and a label.





13

13







(855) 997-1213  
TOPTIERSOLARSOLUTIONS.COM

TOP  
SOLAR

OWNED  
IN MADE











13































19 20 21 22 23 24 25 26 27 28 29 30 31 32 33 34 35 36 37 38 39 40 41

























PHOTOVOLTAIC POWER SOURCE

































































































2  
3  
4  
5  
6  
7  
8  
9  
10  
11  
12  
13  
14  
15  
16  
17  
18  
19  
20  
21  
22  
23  
24  
25



