

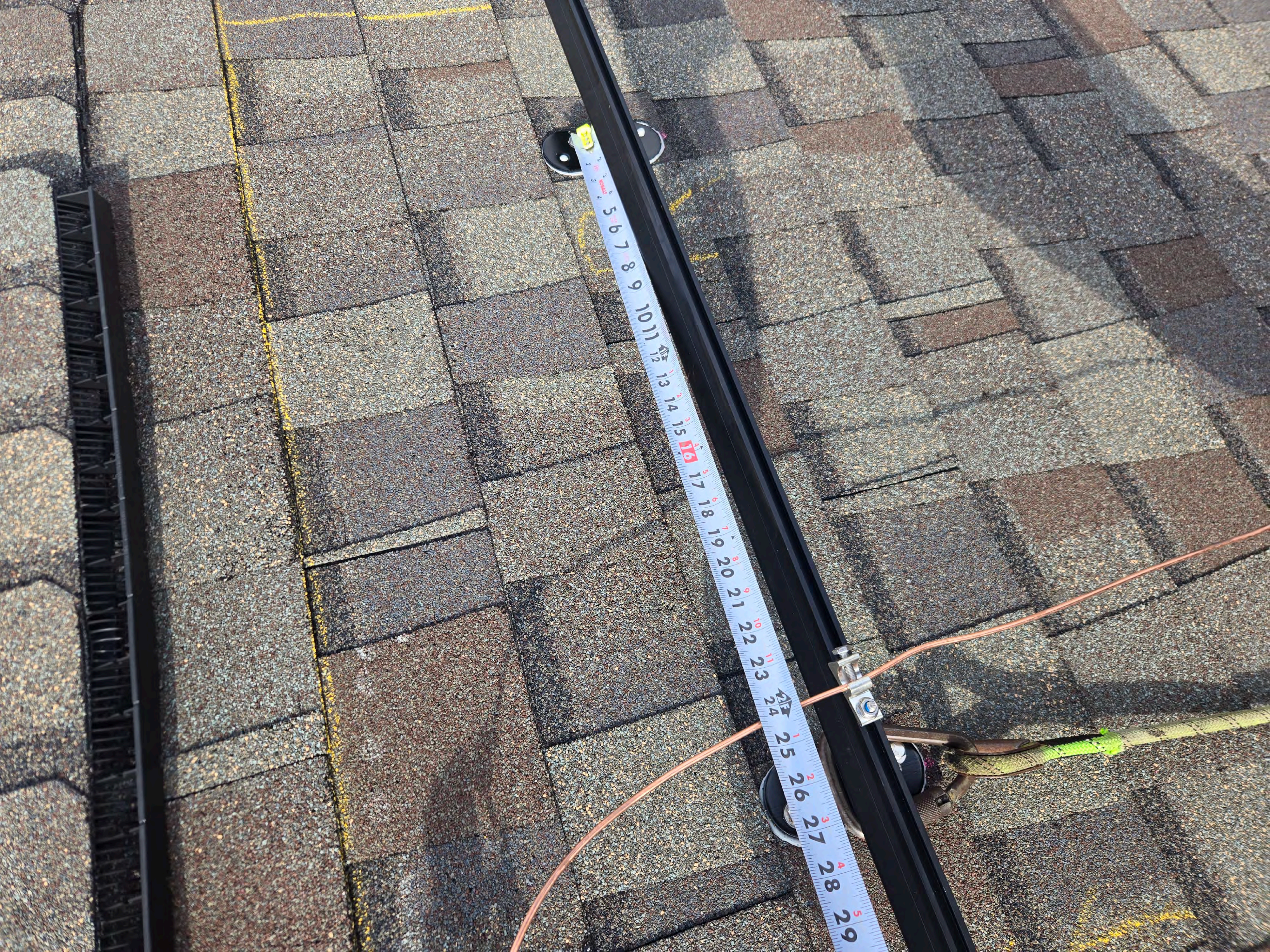


5 6 7 8 9 10 11 12 13 14 15 16 17 18 19 20 21 22 23 24 25 26 27









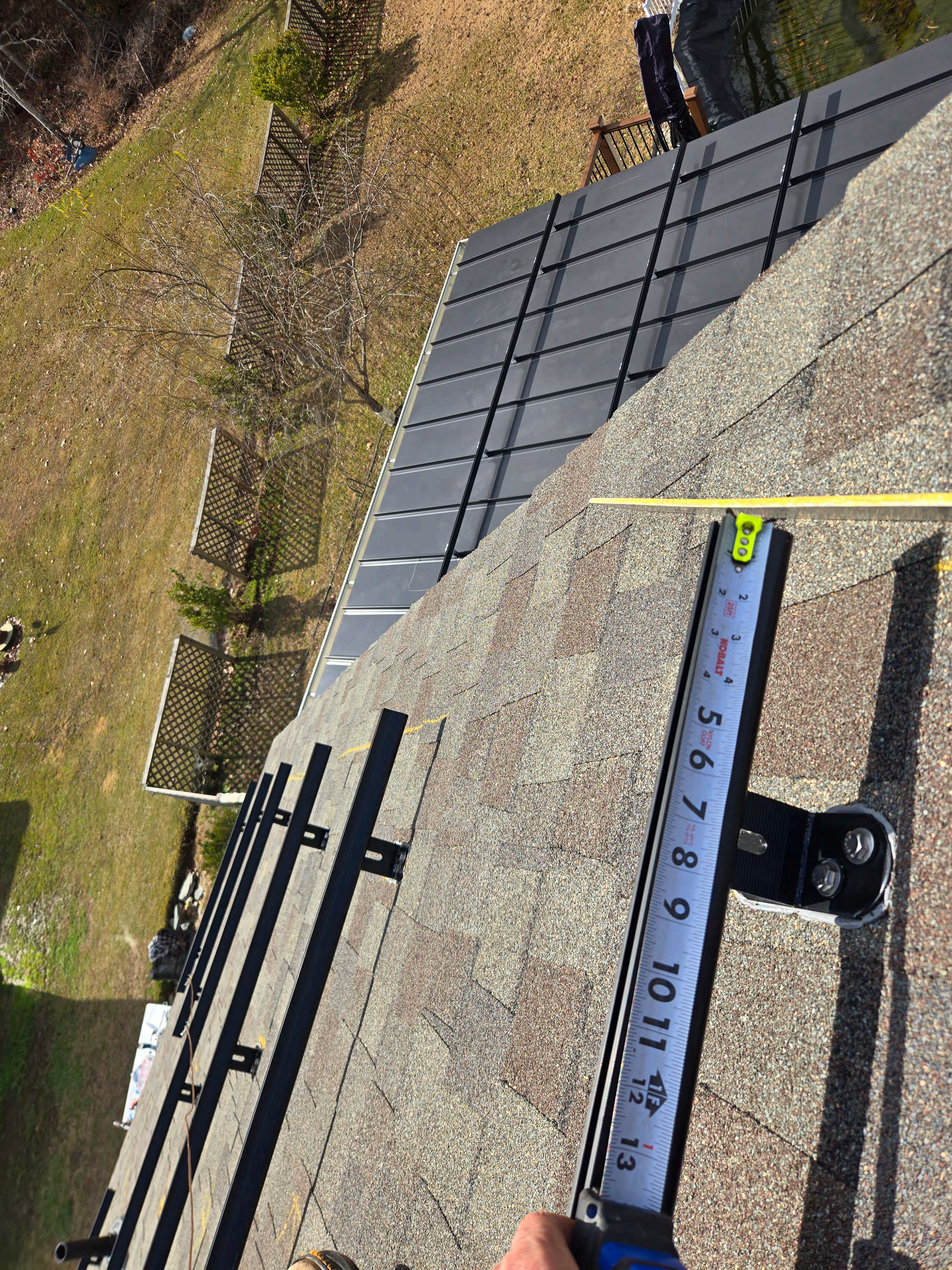
5 6 7 8 9 10 11 12 13 14 15 16 17 18 19 20 21 22 23 24 25 26 27 28 29



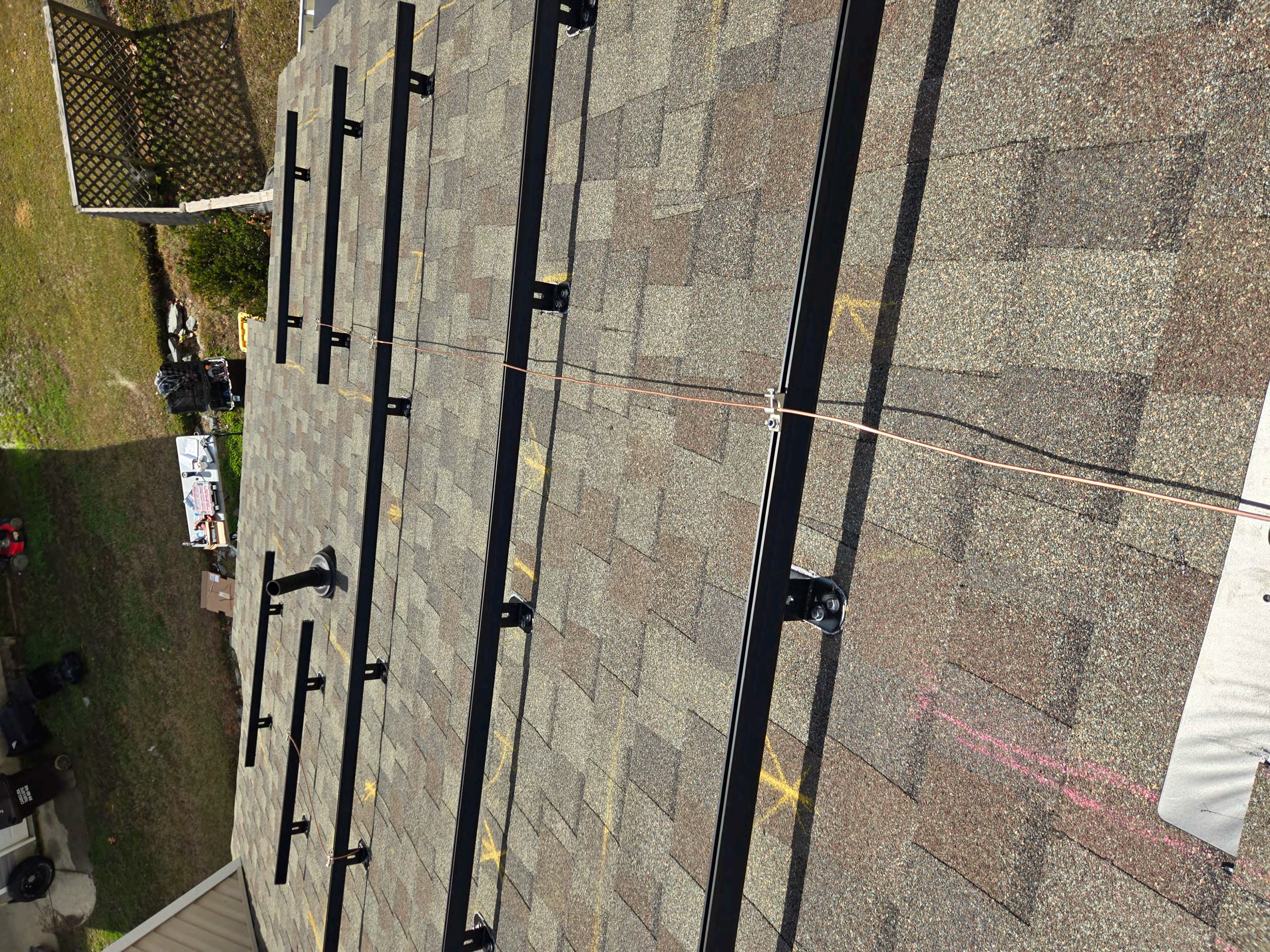




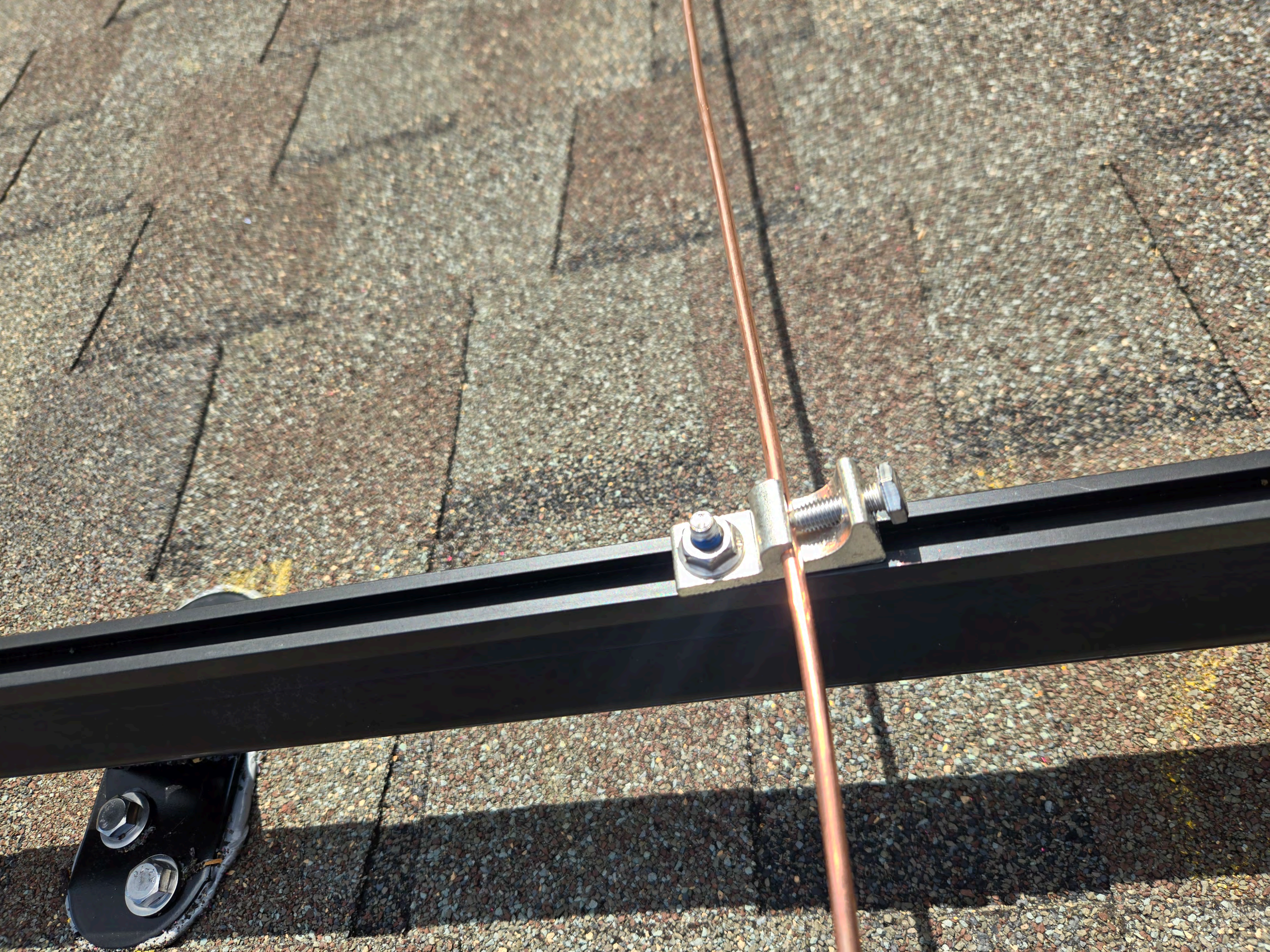




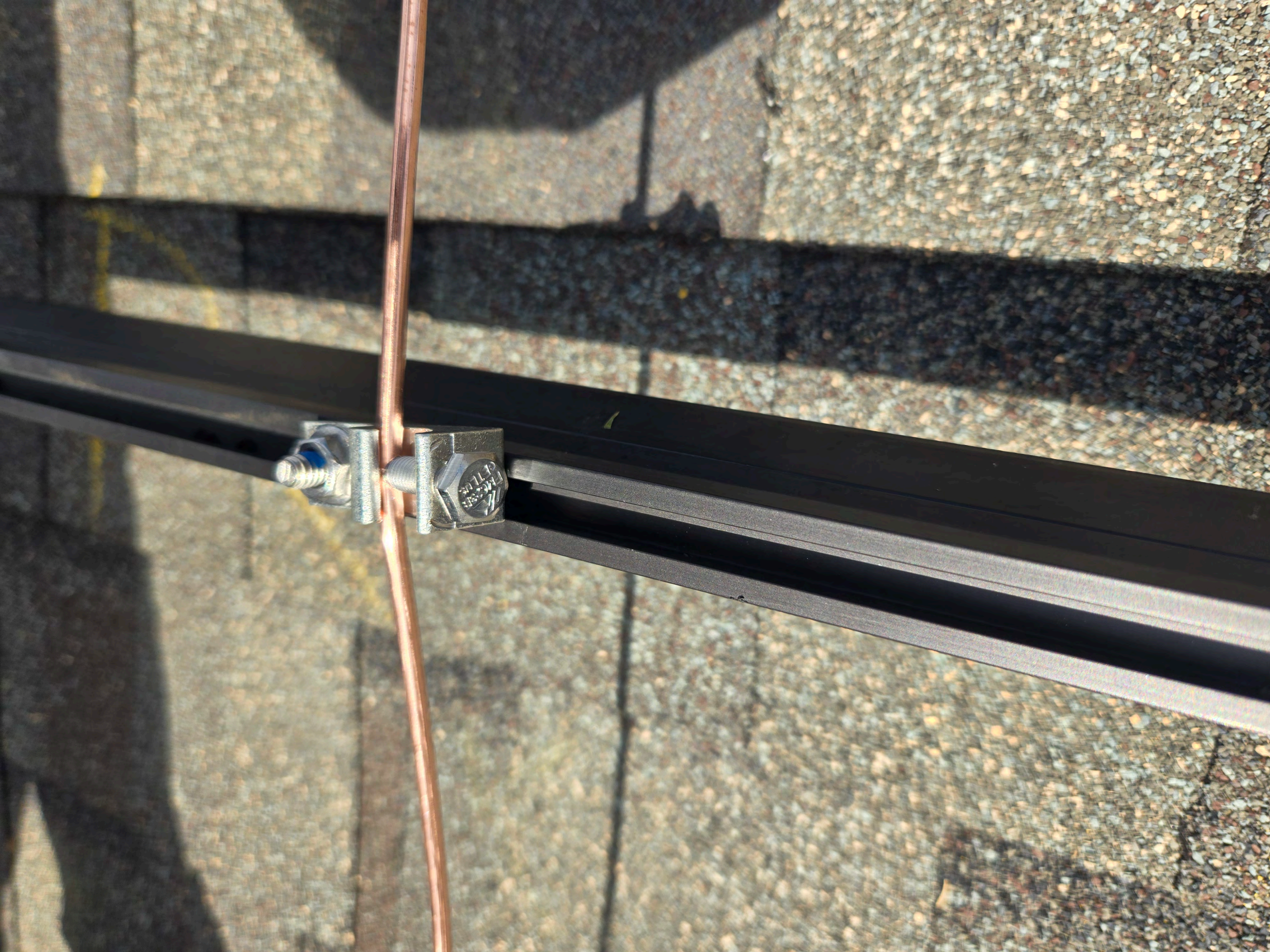
































**IMPORTANT:**  
 Attach to the shingle center only using 6 (SAS) specified fasteners. Framing must support 2-times the intended full production load.

**WARNING:**  
 Failure to follow instructions may result in personal injury or property damage. Do not use if connector hole is bent, cracked or broken. Remove from service if subjected to a fall.

**After the job is completed, consult a local building official for information regarding the effects of this product on existing asphalt or other roofing materials. Refer to the instructions for more details.**

**Manufacturer:**  
 D-Model  
 1194, 2166 PC  
 1194, 2166 PC  
 1194, 2166 PC  
 1194, 2166 PC

