



REC Alpha Pure 2 Series
REC420AA Pure 2
 Serial Number: **FBB-4012850503**

Phone: +65 6495 9228
www.recgroup.com

Power Output (Pmax)	420 W
Watt Class Sorting	0/+ 10 W
Power Production Tolerance	+/- 3 %
Rated Voltage (Vmpp)	42.2 V
Rated Current (Impp)	9.96 A
Rated Circuit Voltage (Voc) (+/- 3%)	49.1 V
Open Circuit Current (Isc) (+/- 3%)	10.74 A
Short Circuit Current (Isc) (+/- 3%)	1000 V
Maximum System Voltage (Vsys)	25 A
Maximum Series Voltage (DC) (UL)	25 A
Maximum Series Fuse (DC) (IEC)	+4666 / -2666 Pa*
Design Load	+7000 / -4000 Pa*
Maximum Test Load	
Maximum Test Load	(Values at STC: 1000 W/m ² , AM 1.5, cell temp 25 °C)

See installation manual for *) mechanical installation requirements and
 +) installation requirements to achieve a specified system fire class

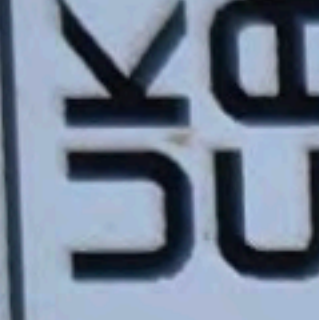


Conforms to
 • UL Std. 61730-1/-2
 • Certified to
 • CSA Std. C22.2#61730-1/-2
 • UL Fire Rating Type 2*

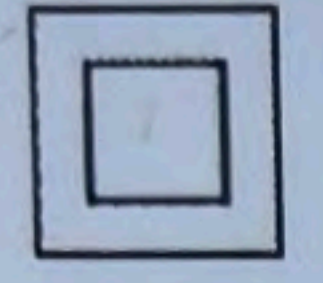
Intertek
 501777A



• IEC 61215:2021
 • IEC 61730:2016



Manufactured: 10.06.2024



Warning electrical hazard. This module produces electricity when exposed to light.

CAUTION: DO NOT DISCONNECT UNDER LOAD

Avertissement: Risque de choc électrique. Ce module solaire produit de l'électricité lorsqu'il est exposé à la lumière.

ATTENTION: NE PAS DECONNECTER SOUS TENSION

For field connections, use min. 4 mm²(12 AWG) UL PV wires insulated for a min. of 90°C
 Made in Singapore by REC SOLAR PTE. LTD.
 20 TUAS SOUTH AVENUE 14, SINGAPORE 637312, SINGAPORE

EU/Europe Contact: REC Solar EMEA GmbH
 Balanstr. 71a, 81541 Munich, Germany, Tel: +49 (0)89-442-38590
 For other regions see: www.recgroup.com/contact





2
3
4
5
6
7
8
9
10
11
12
13
14
15
16
17
18
19
20

KOBALT

BLADES
STAINLESS

BLADES
STAINLESS



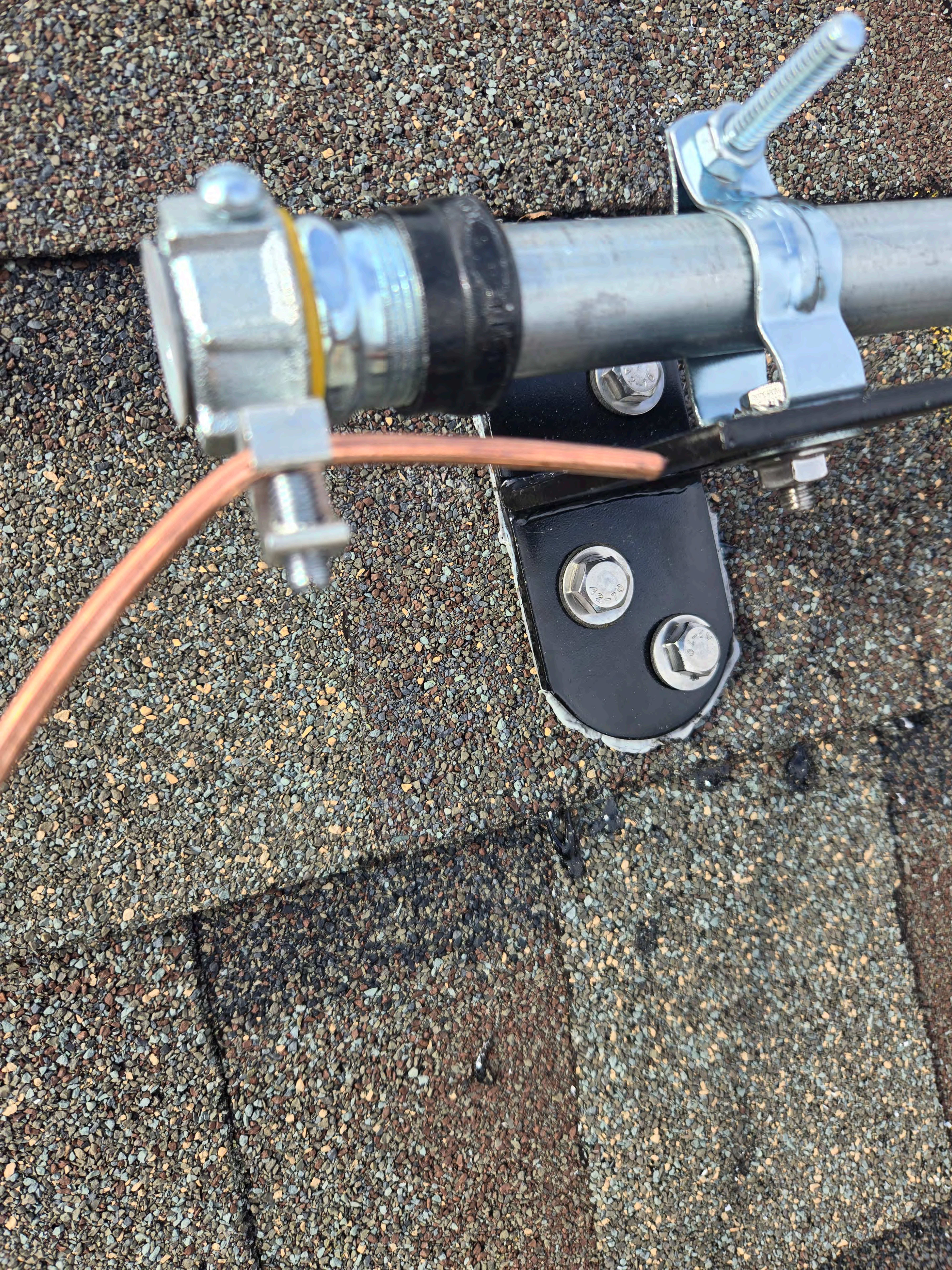
13 12 11 10 9 8 7 6 5 4 3 2 1
KOBALT
NYLON COAT
25ft

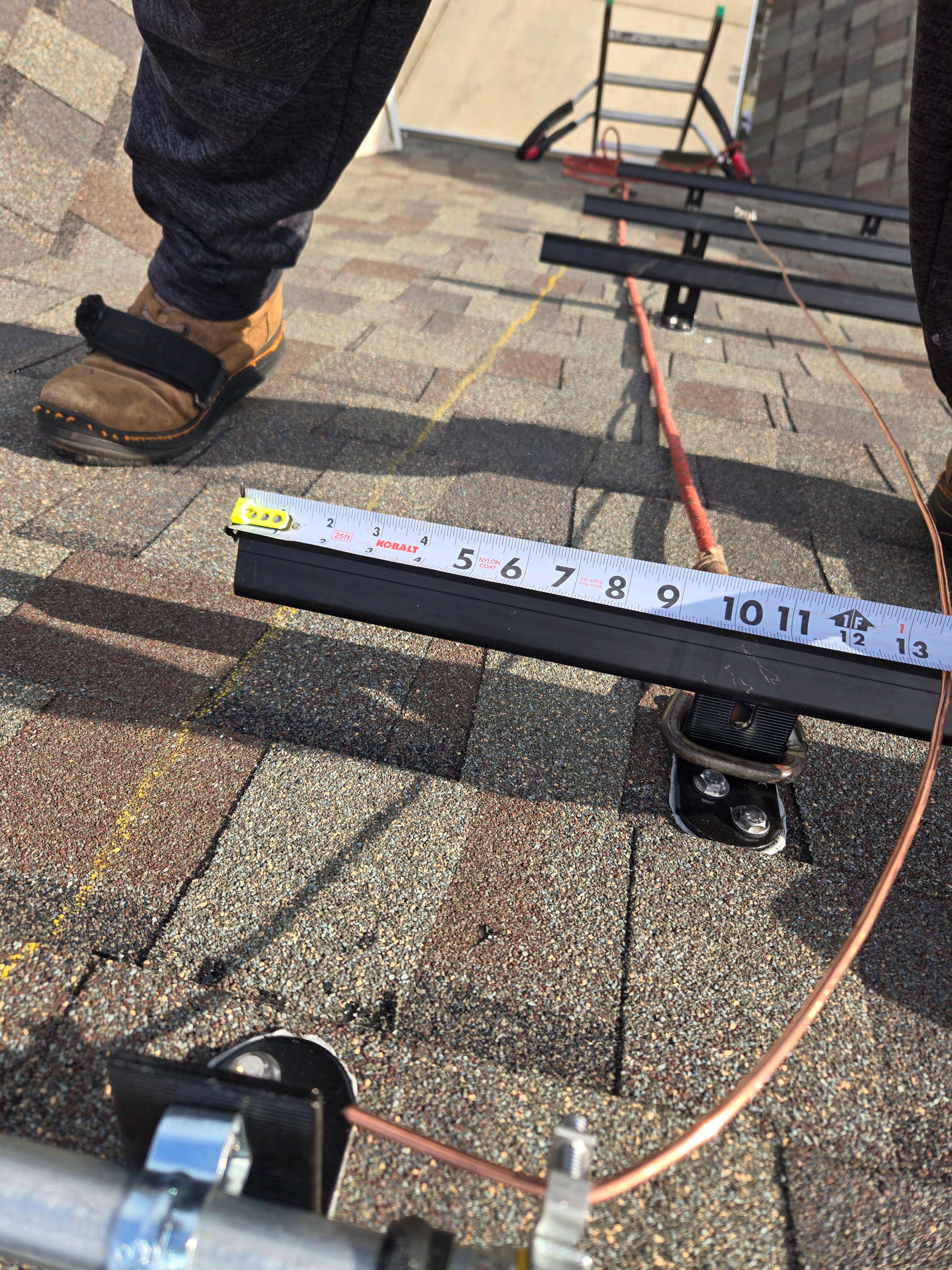


5 6 7 8 9 10 11 12 13 14 15 16 17 18 19 20 21 22 23 24 25 26 27 28









25ft

KOBALT

NYLON COAT

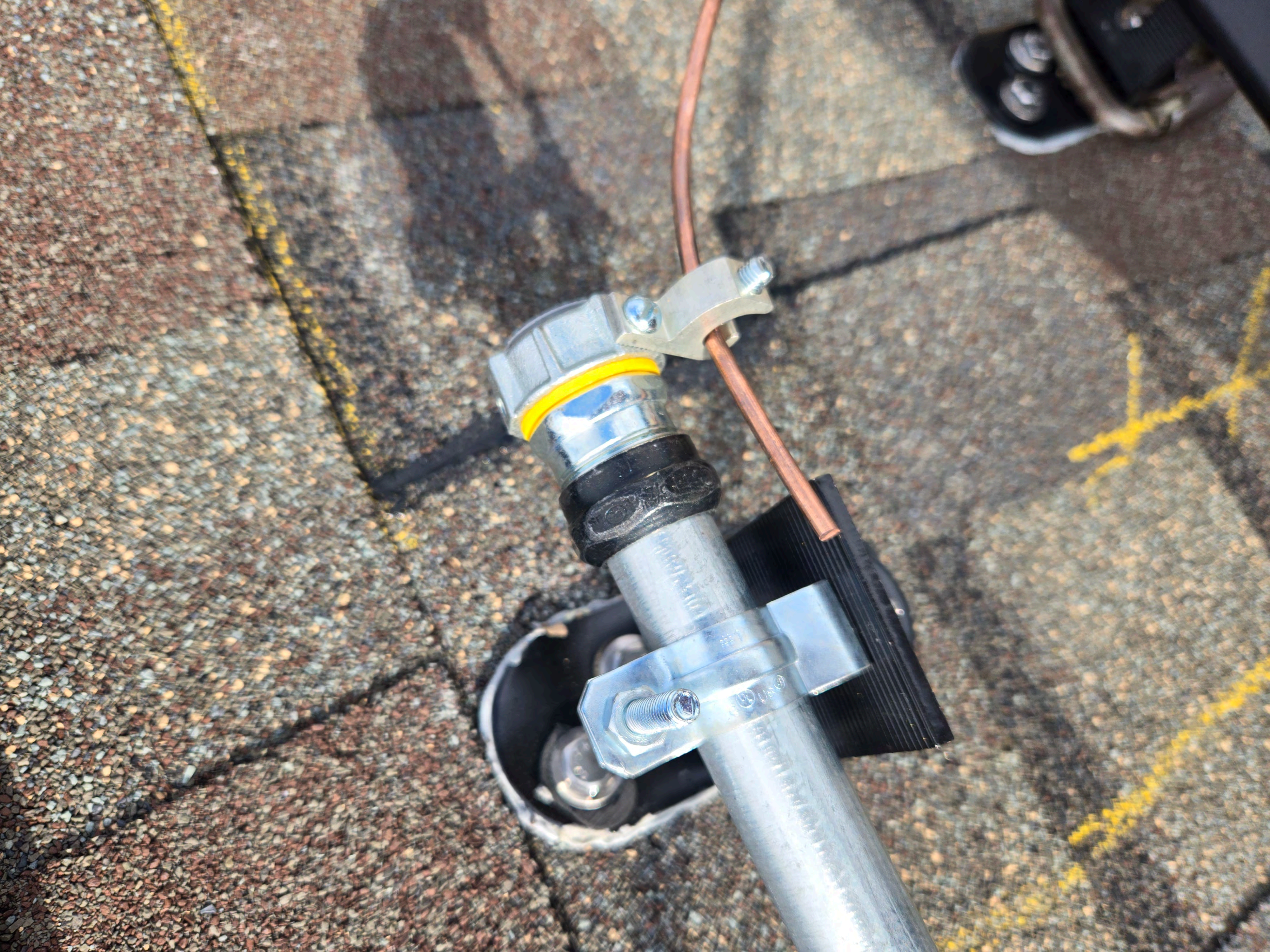
24 APP'D PTA 01-15

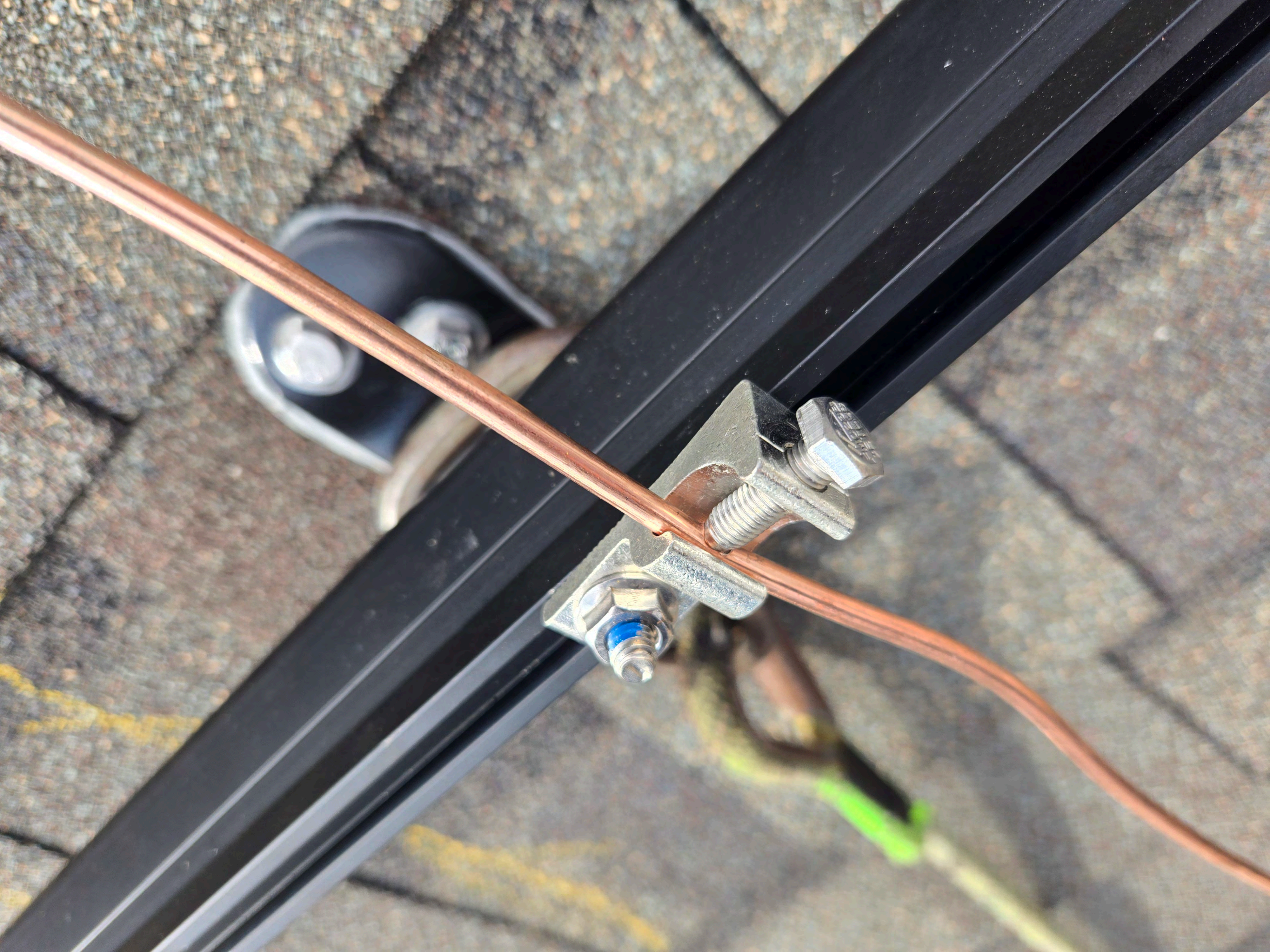


12

13









5 6 7 8 9 10 11

