







204824392502702295

We aim for a greener tomorrow with completely clean energy solutions

Q.TRON BLK M-G2+ 430

PERFORMANCE AT STANDARD TEST CONDITIONS*

Nominal Power* (+5W/-0W)	P_{MPP}	[W]	430
Short circuit current*	I_{sc}	[A]	13.74
Open circuit voltage*	V_{oc}	[V]	39.32
Current at maximum power	I_{MPP}	[A]	13.05
Voltage at maximum power	V_{MPP}	[V]	32.94
Maximum system voltage	V_{SYS}	[V]	1000(IEC) 1000(UL)
Weight	M	[kg/lbs]	21.2/46.7

* Measurement tolerances: $P_{MPP} \pm 3\%$; I_{sc} , $V_{oc} \pm 5\%$ at STC: 1000W/m², 25 ± 2°C, AM 1.5 according to IEC 60904-3. Data given are rated (nominal) values. IEC 61215:2016; IEC 61730:2016.



www.qcells.com
ID: 111-220277



204824392502702295

Hanwha Q CELLS USA Inc.,
300-310 Nexus Drive, Dalton GA 30721, USA

U.S. Patent No. 9,893,215
(solar cells)

EMAIL service@q-cells.com
WEB www.qcells.com

qcells

Assembled in USA



DANGER!
Risk of electric shock!
DO NOT connect or disconnect
plug contacts while system is
under load current. Refer to the
Installation and Operation Manual
before installing, operating or
servicing this unit.

DANGER!
Risque de choc électrique!
NE PAS connecter ou décon-
necter les connecteurs lorsque
le système est en charge.
Consultez le manuel d'installation
et d'utilisation avant installation,
utilisation et entretien du produit.

Fire Rating: Class C / Type 2
Fuse Rating: 25A

38 THOMAS GAGE DR FUQUAY VARINA NC 27526























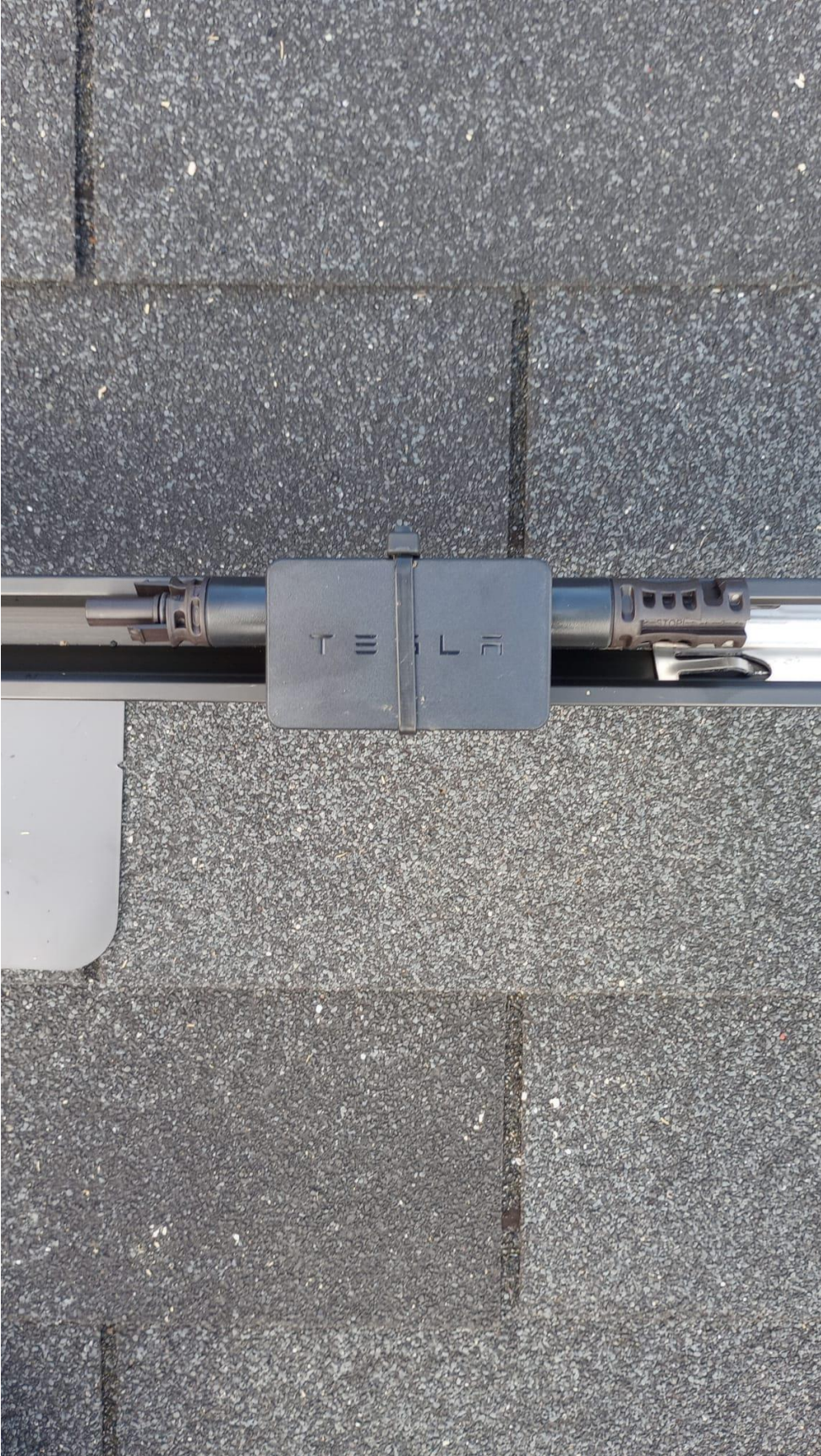




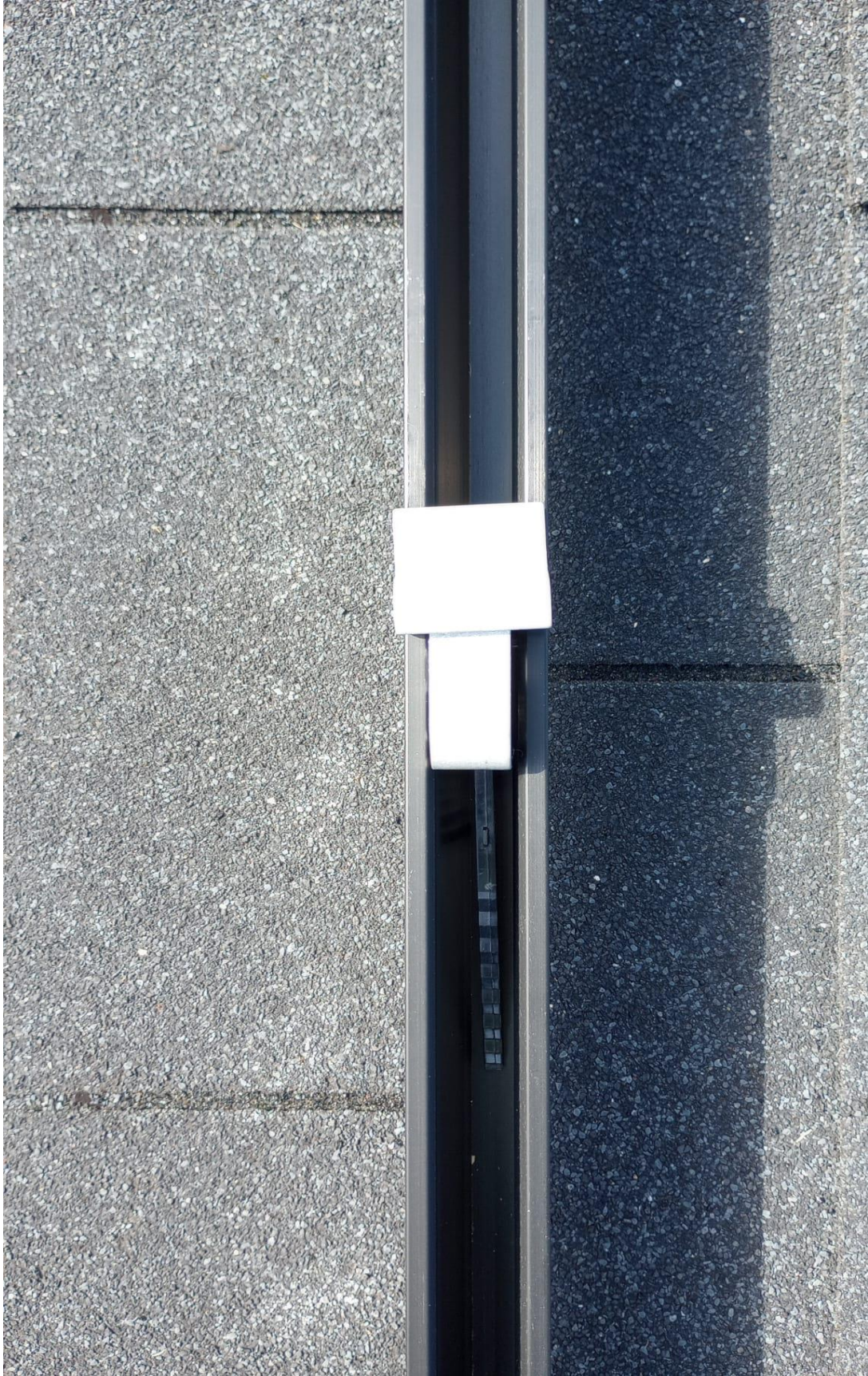




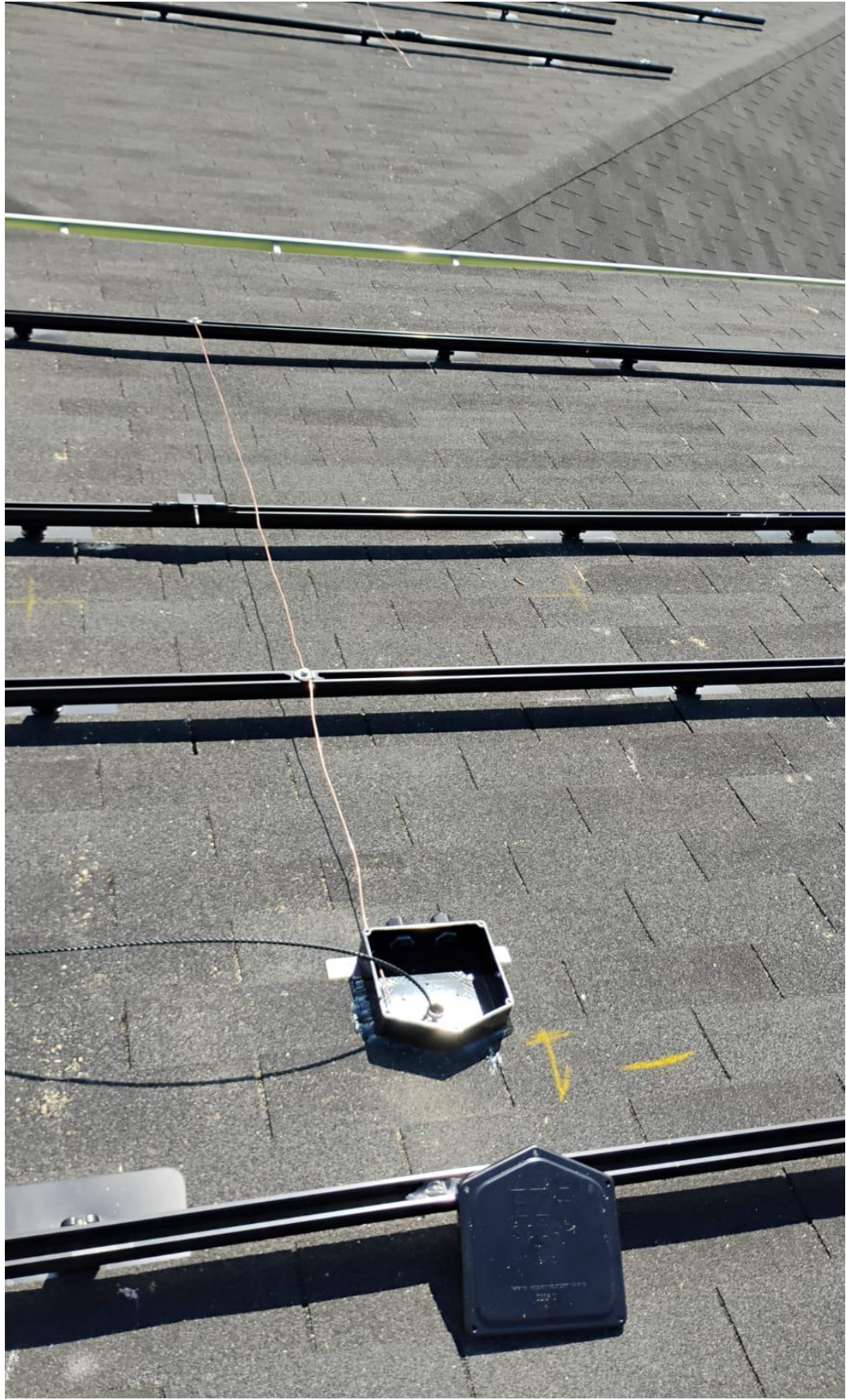








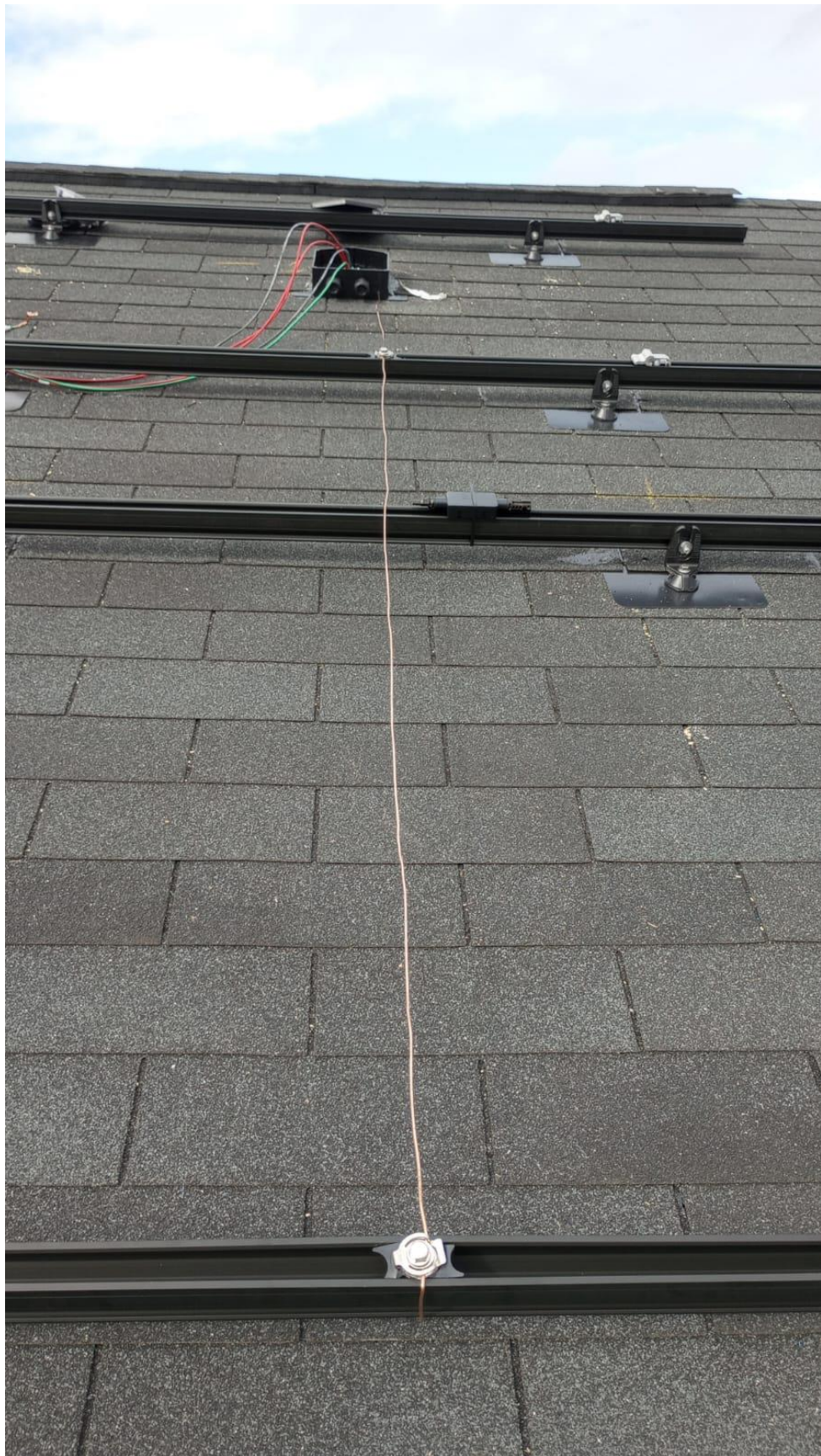














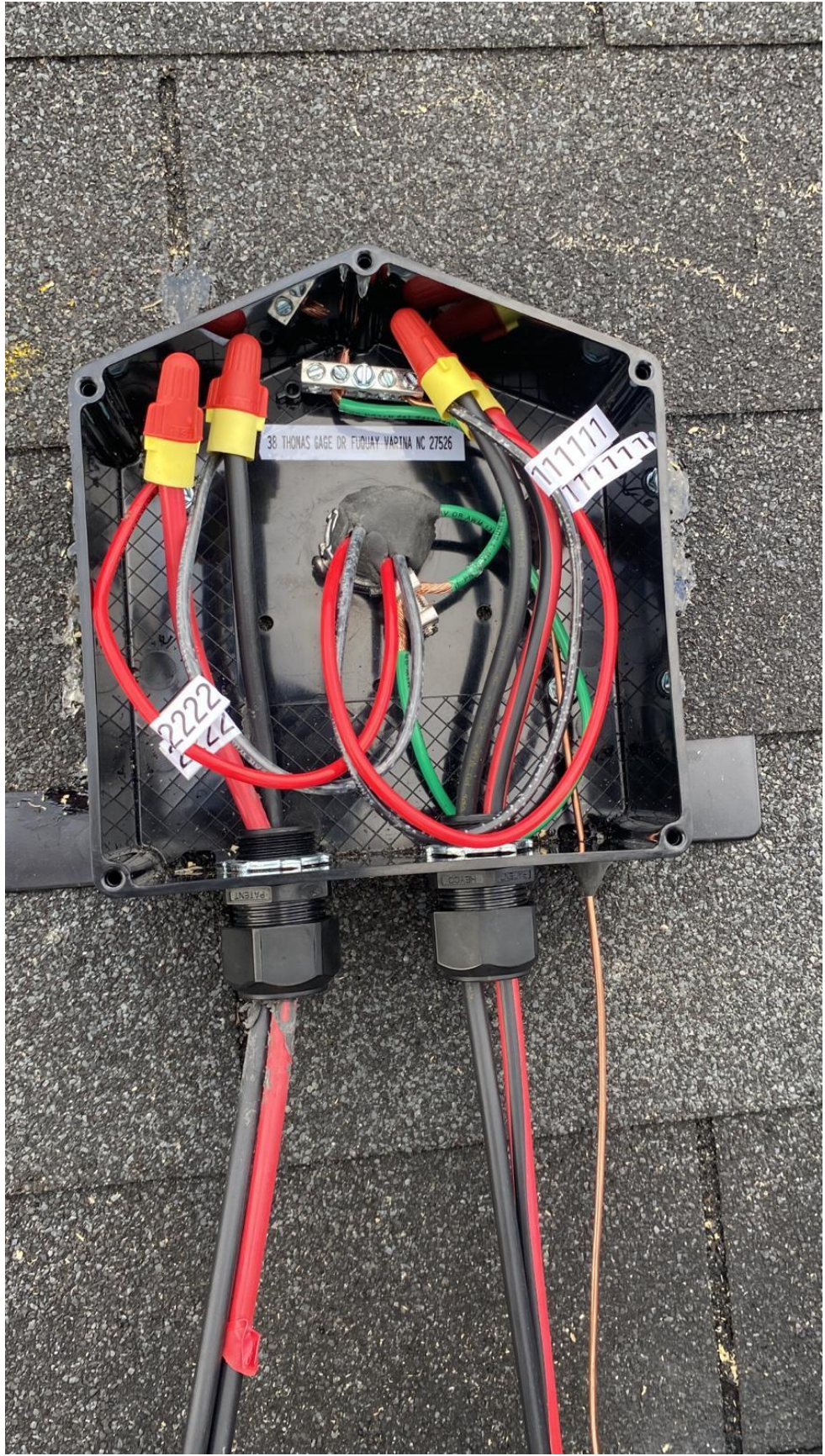














WARNING: PHOTOVOLTAIC
POWER SOURCE

2012



EZ SOLAR

38 THOMAS GAGE DR FUQUAY VARINA NC 27526

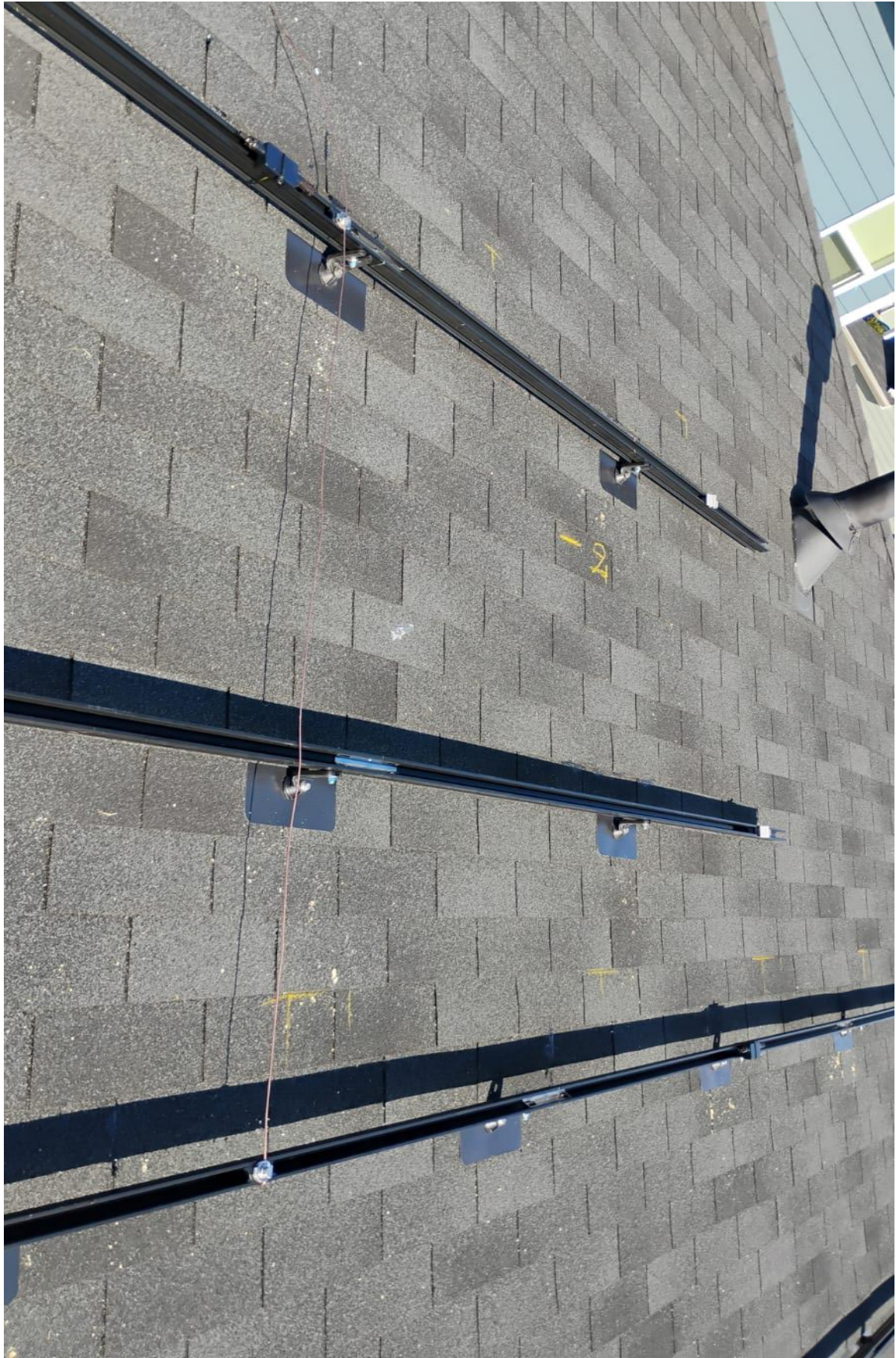
JB-1.2

**WARNING: PHOTOVOLTAIC
POWER SOURCE**



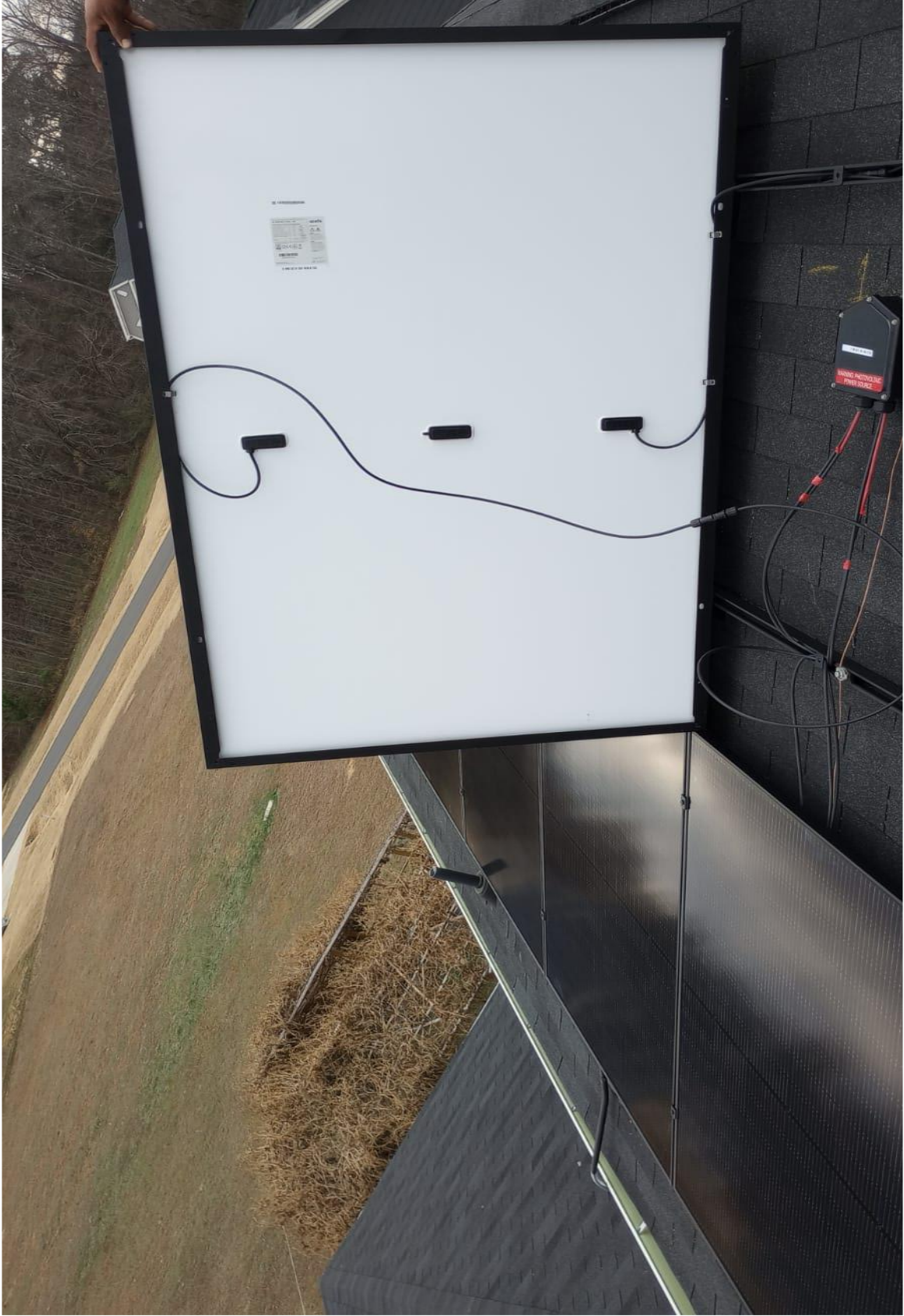














REGIUS
SOLAR®
ECONEL
FRS
21-2
C US A







204824392502702295





