













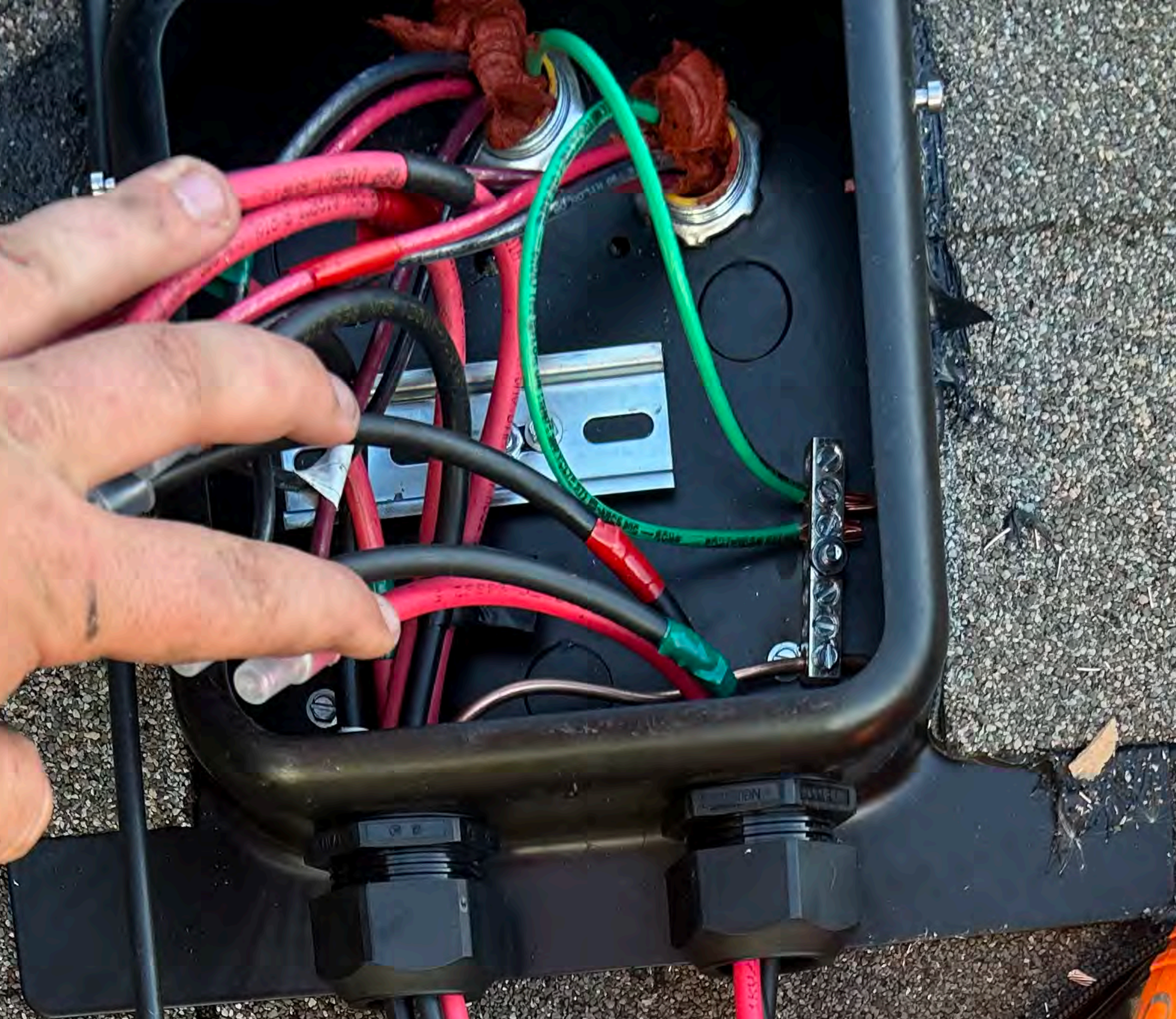




Nicole THOMPSON  
185 Clyde Dog Ct.  
Lillington, NC 27546



















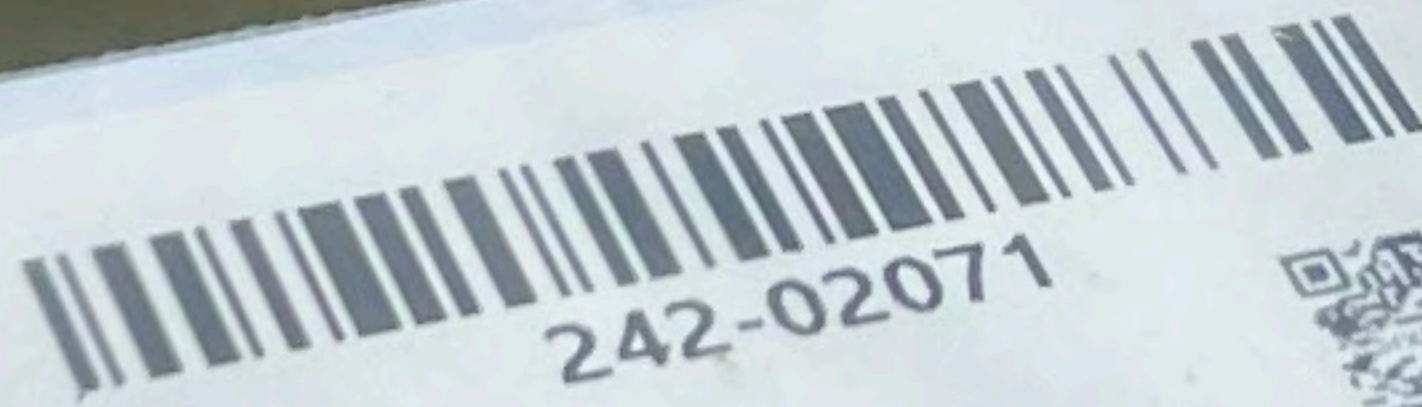
SnapNrack

[www.snapnrack.com](http://www.snapnrack.com)  
[www.snapnrack.com/patent](http://www.snapnrack.com/patent)

242-02071

SNAPNRACK, ULTRA  
RAIL MID CLAMP,  
BLACK

Product of Chihuahua, Mexico



242-02071



SnapNrack 775 Piero Ln.  
San Luis Obispo, CA 93402



2524165
07/17/24
QTY: 20

Nrack™

tions







MODEL: PV RAPID SWITCHER 200W  
PV: 18V-48V  
E1270011000000

MAX DC VOLTAGE 150V  
OPERATING DC VOLTAGE 0-150V  
MAX CURRENT 12A

MAX SHORT CIRCUIT CURRENT (I<sub>sc</sub>)  
OUTDOOR USE ONLY  
OPERATING TEMP: -40°C TO 70°C  
NEMA 4X/99  
MADE IN USA

 ETEK CITY  
Etekcity.com



1  
8  
5





1885

**Caution**  
WARNING: This equipment is not to be used for purposes other than those intended. See the instruction manual for details.  
CE X













WARNING PROTECTIVE LINE  
Please do not touch

WARNING PROTECTIVE LINE  
Please do not touch

WARNING PROTECTIVE LINE  
Please do not touch

WARNING PROTECTIVE LINE  
Please do not touch

WARNING PROTECTIVE LINE  
Please do not touch

WARNING PROTECTIVE LINE  
Please do not touch



**WRETER SOCKET**  
UNPLUG HERE TO REMOVE  
METER FROM SERVICE

INSTALLATION INSTRUCTIONS  
1. Verify that the meter is intended for use in the location.  
2. Verify that the meter is intended for use with the service voltage and frequency.  
3. Verify that the meter is intended for use with the service type (single phase or three phase).  
4. Verify that the meter is intended for use with the service size (100 amp or 200 amp).  
5. Verify that the meter is intended for use with the service configuration (split phase or three phase).  
6. Verify that the meter is intended for use with the service meter base.  
7. Verify that the meter is intended for use with the service meter socket.  
8. Verify that the meter is intended for use with the service meter enclosure.  
9. Verify that the meter is intended for use with the service meter panel.  
10. Verify that the meter is intended for use with the service meter cabinet.

CENTRON®

0002FA2DA0  
FCC ID:SK9AM7 IC: 864G-AM7 MODEL:AM7

LEVEL 2

CL200 240V 3W TYPE C2M 30TA 1.0Kh  
\*ZZZ 0F9267 H67\* CA 0.5  
FM2S  
60HZ

DUKE ENERGY PROGRESS  
348 789 463

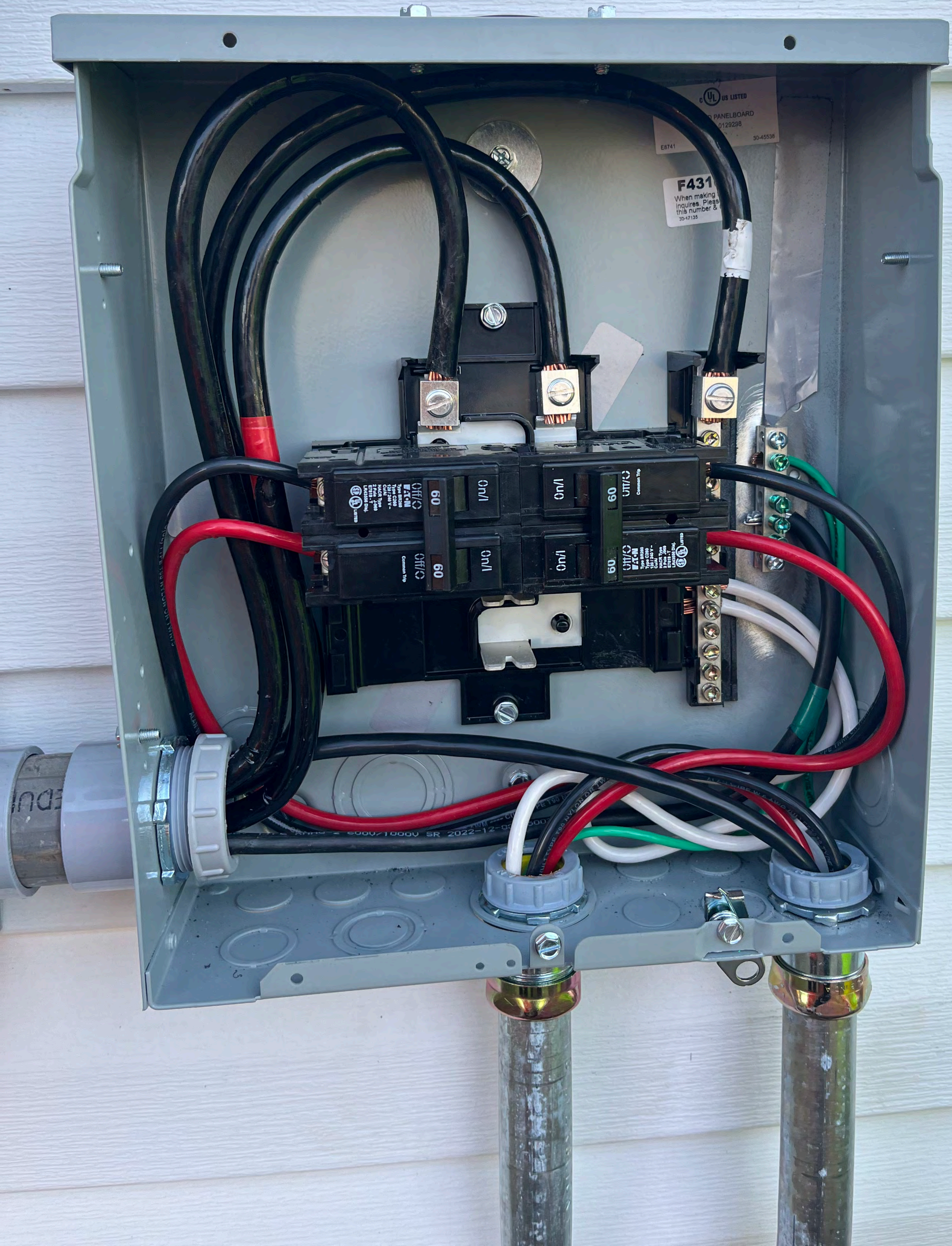
F120529  
OpenWay  
by Itron  
2/23

DO NOT OPEN THIS METER SHALL BE  
RETURNED TO THE COMPANY  
WITH NO BREAKS IN THE  
GROUND WIRE.









UL US LISTED  
PANELBOARD  
0129298  
E8741 90-45536

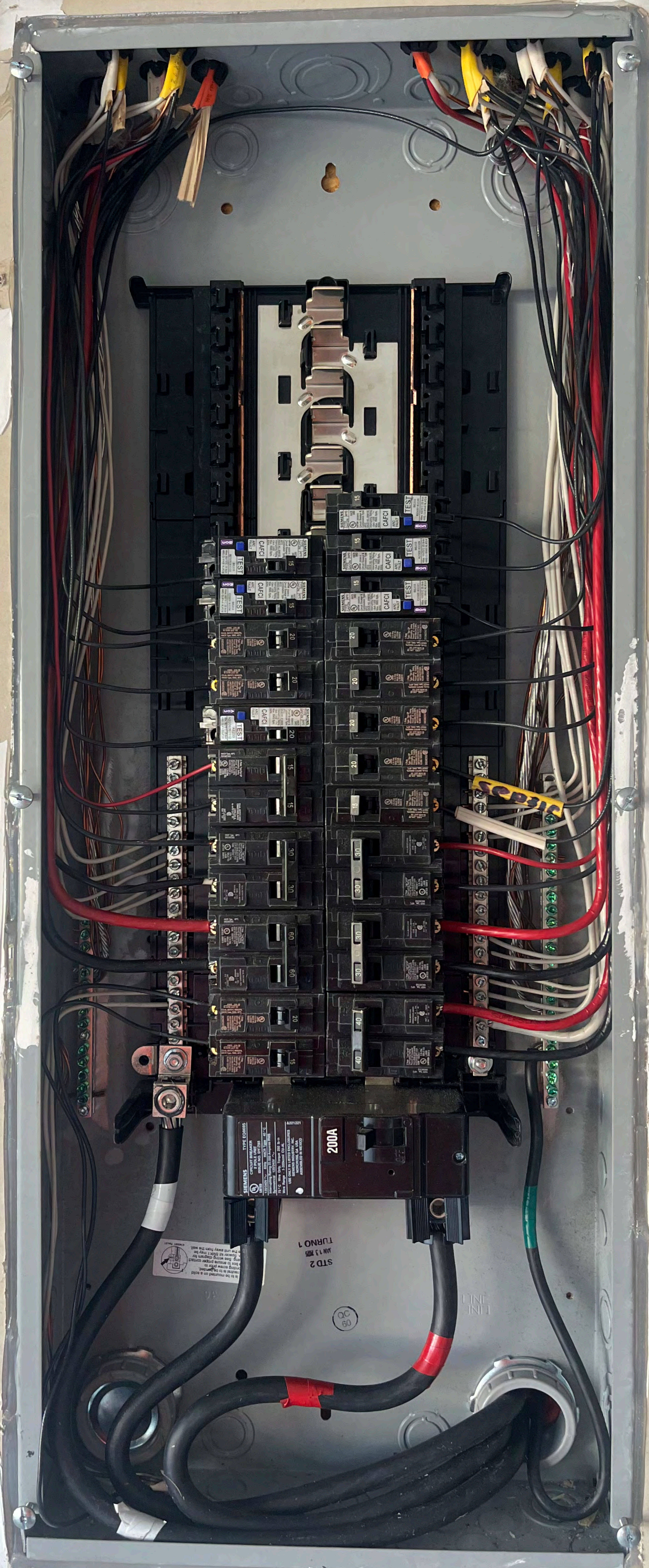
**F431**  
When making  
inquiries, please  
refer to this number &  
30-47135

60 On/I  
60 On/I  
60 On/I  
60 On/I  
Common Trip  
60 On/I  
60 On/I  
Common Trip

INDU

6000V, 10000V SR 2022-12-01





15	15	15	15	15	15	15	15	15	15	15	15
20	20	20	20	20	20	20	20	20	20	20	20
30	30	30	30	30	30	30	30	30	30	30	30
40	40	40	40	40	40	40	40	40	40	40	40
60	60	60	60	60	60	60	60	60	60	60	60
100	100	100	100	100	100	100	100	100	100	100	100

**200A**

SIEMENS  
 1251221  
 200A 1P  
 1251221

STD 2  
 TURN 1

80

ZZ







SMITH/DOUGLAS

**SMITH DOUGLAS HOMES**  
QUALITY | INTEGRITY | VALUE

Smith Douglas Service Email - [Warranty@smithdouglas.com](mailto:Warranty@smithdouglas.com)  
Smith Douglas Service Line - (888) 357-4583      Dubuque Crossing      Lot 11

Electrician	AXE Electric	715-387-4100
Plumbing	E&M Plumbing	919-292-2048
Heating & Air	Bowman Mechanical Services Inc.	802-770-9303 (after hours)
Appliances	Frigidaire.com	855-224-4987
Utility - Water	Harrison County	910-814-4002
Utility - Electric	Duke Energy Progress	800-775-9288
Gas	LP optional for fireplace	Contact local LP provider
Location of Gas Shut Off	N/A	
Location Water Shut Off	Garage at Water Heater	If basement lot located in basement
Septic	A&R Enterprise	845-742-8576
Interior - Brand	Sherwin Williams	Closing Date:
Walls	SW 2014 Eder White	
Ceiling	SW 2006 Extra White	Air Filter Size:
Floor	SW 2006 Extra White	
Exterior - Brand	Vinyl Siding	Change Filter Date:
Siding	Glacier White	Monthly
Shutter/Door	Black/SW628 Tricorn Black	Change Battery Date:
Shake/Trim	Glacier White/White	every time change

**WARNING**  
THREE POWER SOURCES  
SOURCES: UTILITY GRID, BATTERY  
AND PV SOLAR ELECTRIC SYSTEM



PW3 COMBINER



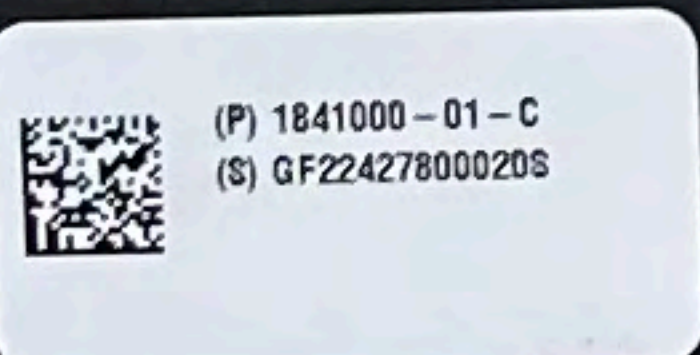
**PHOTOVOLTAIC SYSTEM**  
**AC DISCONNECT**  
OPERATING VOLTAGE **240** VOLTS  
OPERATING CURRENT **96** AMPS

**MAIN BATTERY SYSTEM DISCONNECT**

SERVICE DISCONNECT



**GATEWAY 3**



Conforms to:  
UL STD5 67, 916, 869A, 1741  
Certified to:  
CAN/CSA 22-2 No. 205, 29, 107

IEC PROTECTIVE CLASS	CLASS I
ENCLOSURE TYPE	TYPE 3R, RAINPROOF
OPERATING TEMPERATURE RANGE	-20°C TO 50°C (-4°F TO 122°F)
AC INPUT / OUTPUT	
NOMINAL VOLTAGE	120/240VAC
PHASE	2W + N + PE
MAX CONTINUOUS CURRENT	200A
MAX SUPPLY SHORT CIRCUIT CURRENT	25kA*
GRID FREQUENCY	60Hz

\*SEE INSTALLATION MANUAL FOR ALLOWABLE MAIN AND BRANCH BREAKER COMBINATIONS

**CAUTION:** RISK OF ELECTRIC SHOCK. MULTIPLE VOLTAGE SOURCES TERMINATED WITHIN. DISCONNECT EACH CIRCUIT BEFORE SERVICING. REFER SERVICING TO QUALIFIED PERSONNEL.

**WARNING:** ISOLATE AT SUPPLY AUTHORITY SOURCE BEFORE ENTERING THIS COMPARTMENT.

**ATTENTION:** RISQUE DE CHOC ELECTRIQUE. PLUSIEURS SOURCES DE TENSION SONT CONNECTEES A L'INTERIEUR DE CET EQUIPEMENT. CHAQUE CIRCUIT DOIT ETRE DECONNECTE INDIVIDUELLEMENT AVANT INTERVENTION. LA MAINTENANCE DOIT ETRE EFFECTUEE PAR DU PERSONNEL QUALIFIE.

**AVERTISSEMENT:** ISOLER A LA SOURCE D'ALIMENTATION DU DISTRIBUTEUR AVANT D'OUVRIR CE COMPARTIMENT.

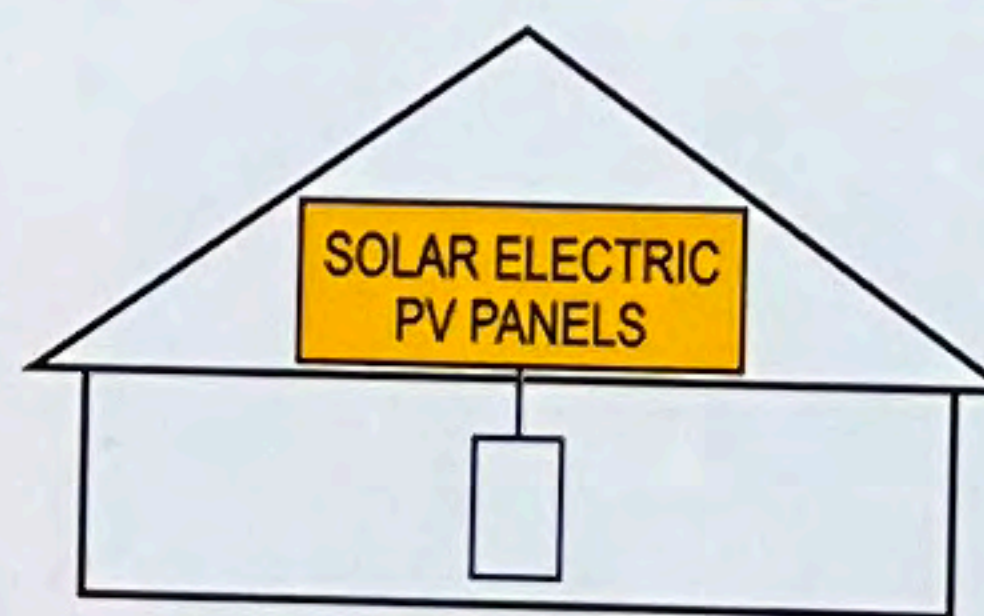
SUITABLE FOR USE WITH INTERCONNECTED PARALLEL ELECTRIC POWER PRODUCTION SOURCES

SUITABLE FOR USE AS SERVICE EQUIPMENT

CLASS CTL PANELBOARD

**TESLA**  
TESLA, INC.  
SOUTH PARK AVENUE  
BUFFALO, NY 14220, USA  
TEL: 1-877-798-3752  
WWW.TESLA.COM

**SOLAR PV SYSTEM**  
**EQUIPPED WITH**  
**RAPID SHUTDOWN**



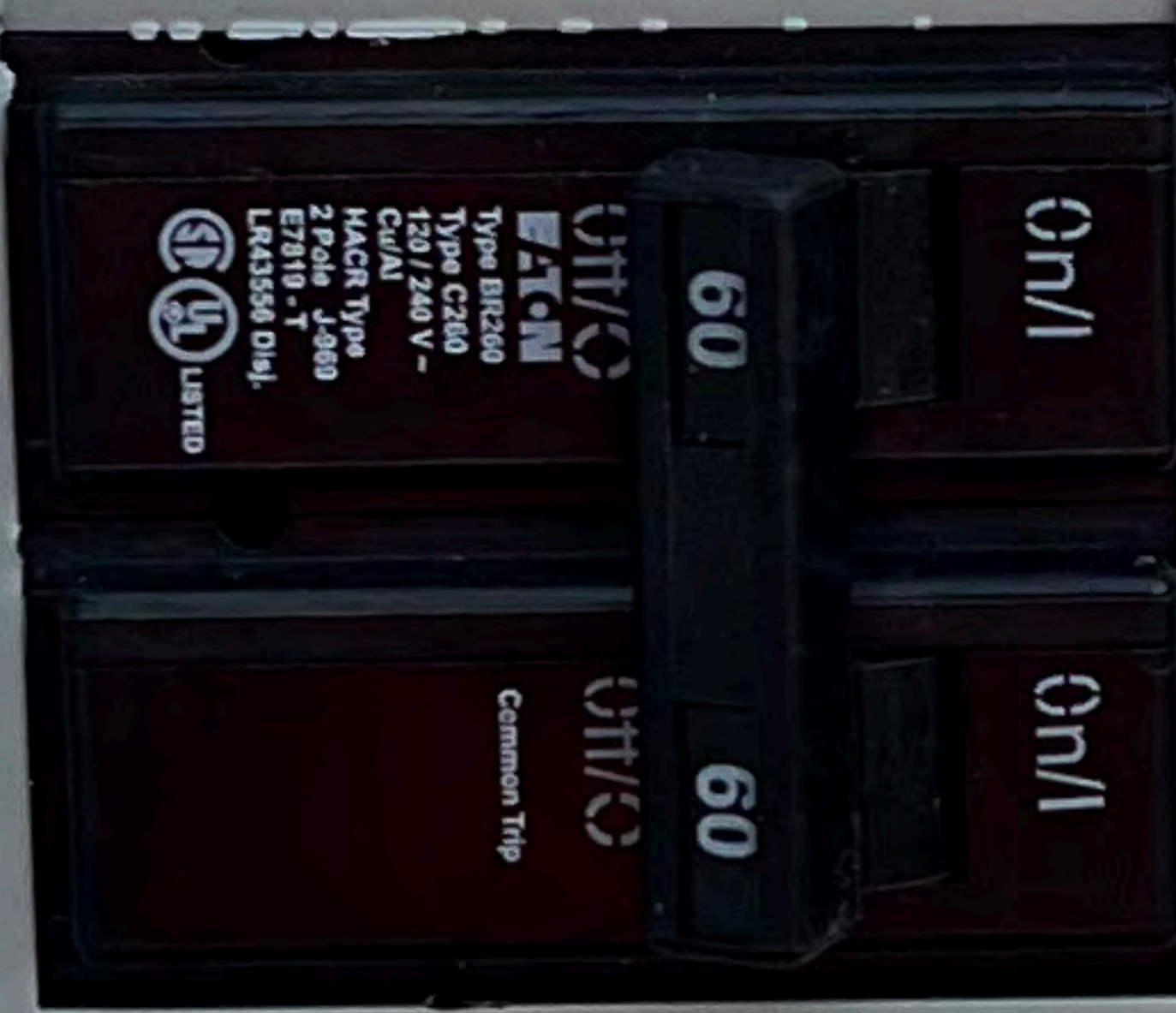
TURN RAPID SHUTDOWN SWITCH TO THE "OFF" POSITION TO SHUT DOWN PV SYSTEM AND REDUCE SHOCK HAZARD IN THE ARRAY



**PHOTOVOLTAIC SYSTEM**  
**⚠ AC DISCONNECT ⚠**  
OPERATING VOLTAGE **240** VOLTS  
OPERATING CURRENT **48** AMPS  
pvlabels.com 03-210

**PHOTOVOLTAIC SYSTEM**  
**⚠ AC DISCONNECT ⚠**  
OPERATING VOLTAGE **240** VOLTS  
OPERATING CURRENT **48** AMPS  
pvlabels.com 03-210

LEFT PW3



RIGHT PW3



**CAUTION: DO NOT INSTALL  
ADDITIONAL LOADS IN THIS PANEL**  
pvlabels.com 04-31\*

WIRE  
#14-10  
TIPO EATON  
PARA (1) ALAMBRE  
DOWN SCREW KIT  
ESTA ATRASADO KIT DE  
NO. BIECOS 125 SE REQUIERE  
REV. 07

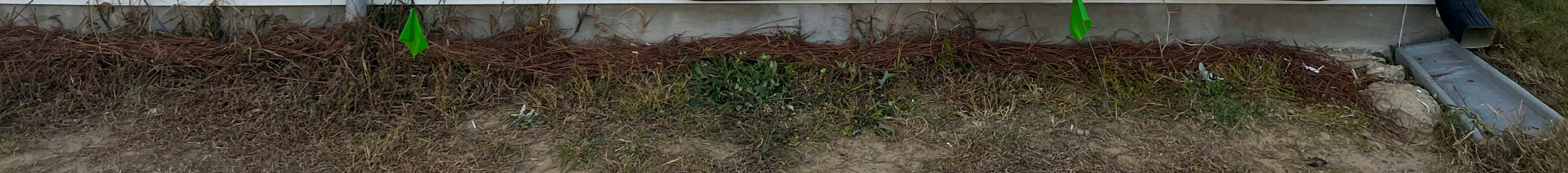
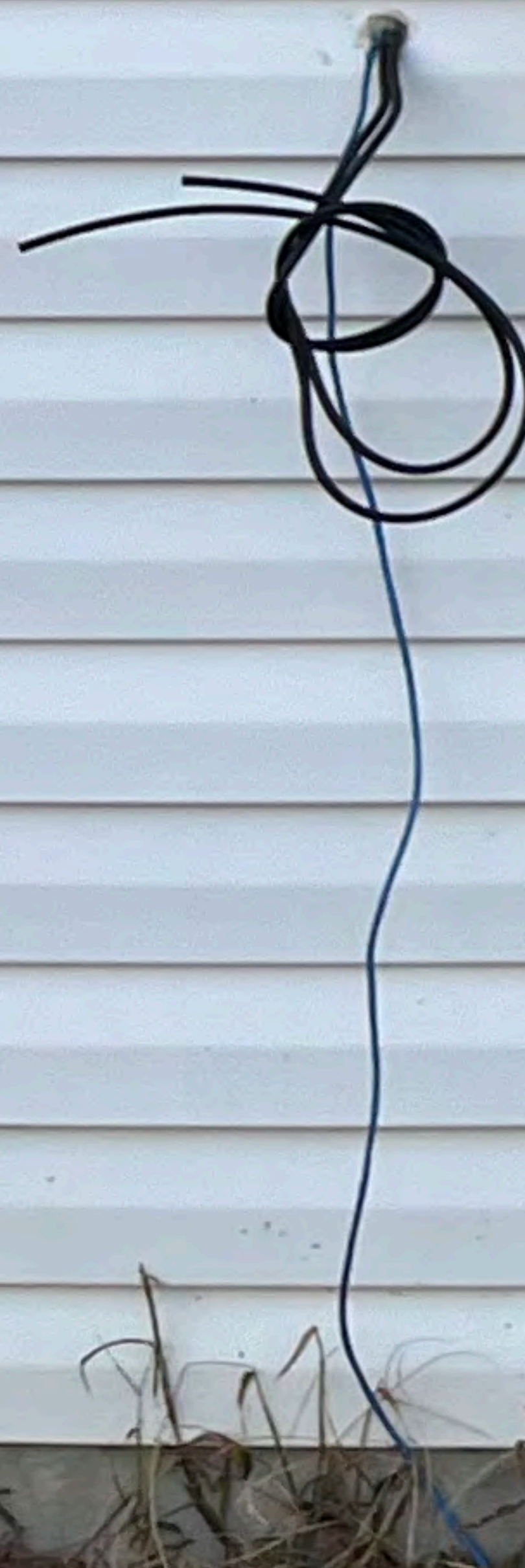


TESLA  
WARNING  
SOLAR PV SYSTEM  
EQUIPPED WITH  
RAPID SHUTDOWN  
WARNING  
E-T-N  
ON  
OFF  
WARNING  
SOLAR PV SYSTEM  
EQUIPPED WITH  
RAPID SHUTDOWN  
WARNING  
E-T-N  
ON  
OFF  
WARNING  
SOLAR PV SYSTEM  
EQUIPPED WITH  
RAPID SHUTDOWN  
WARNING  
E-T-N  
ON  
OFF

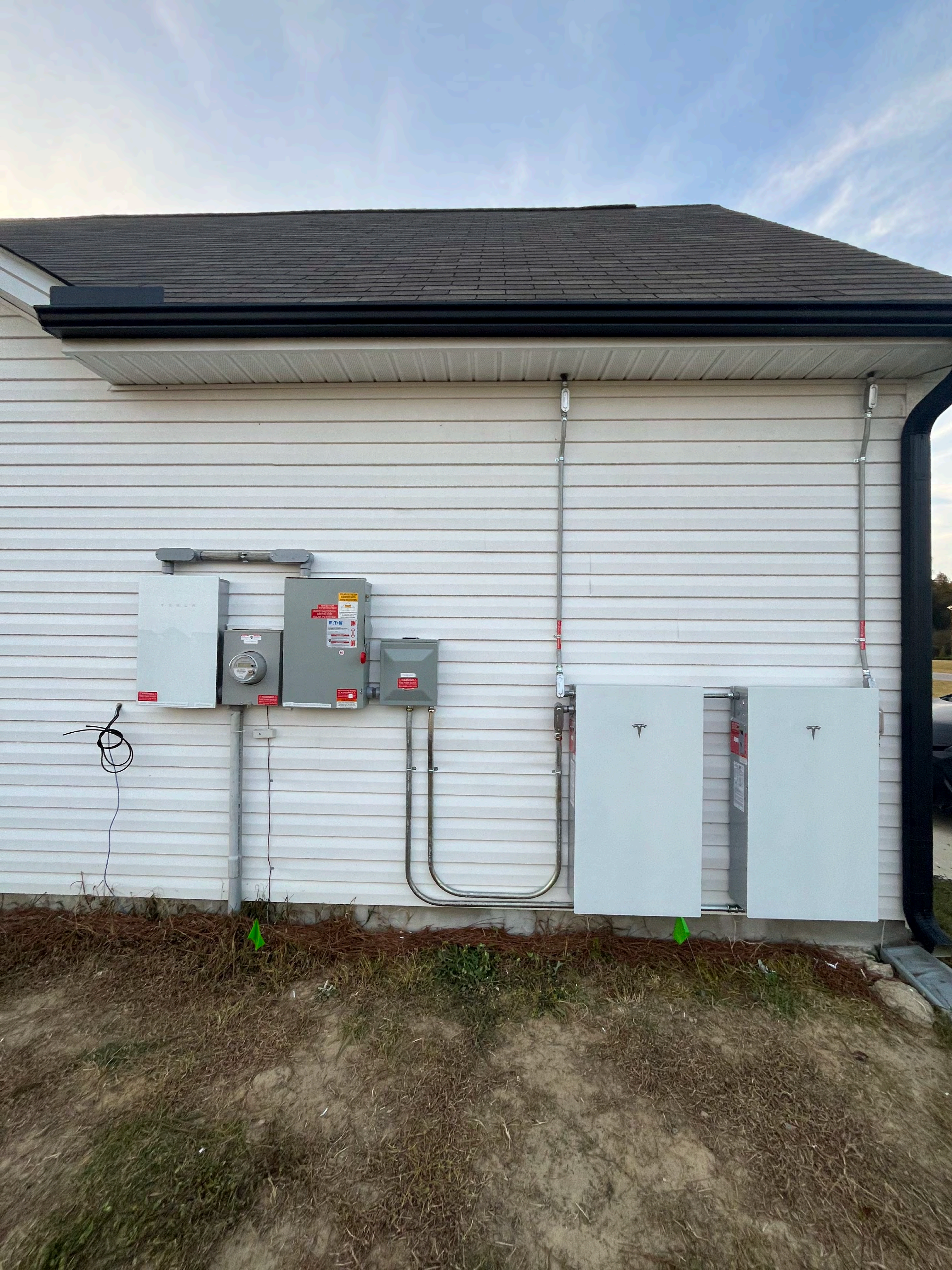
WARNING  
SOLAR PV SYSTEM  
EQUIPPED WITH  
RAPID SHUTDOWN  
WARNING  
E-T-N  
ON  
OFF

TESLA

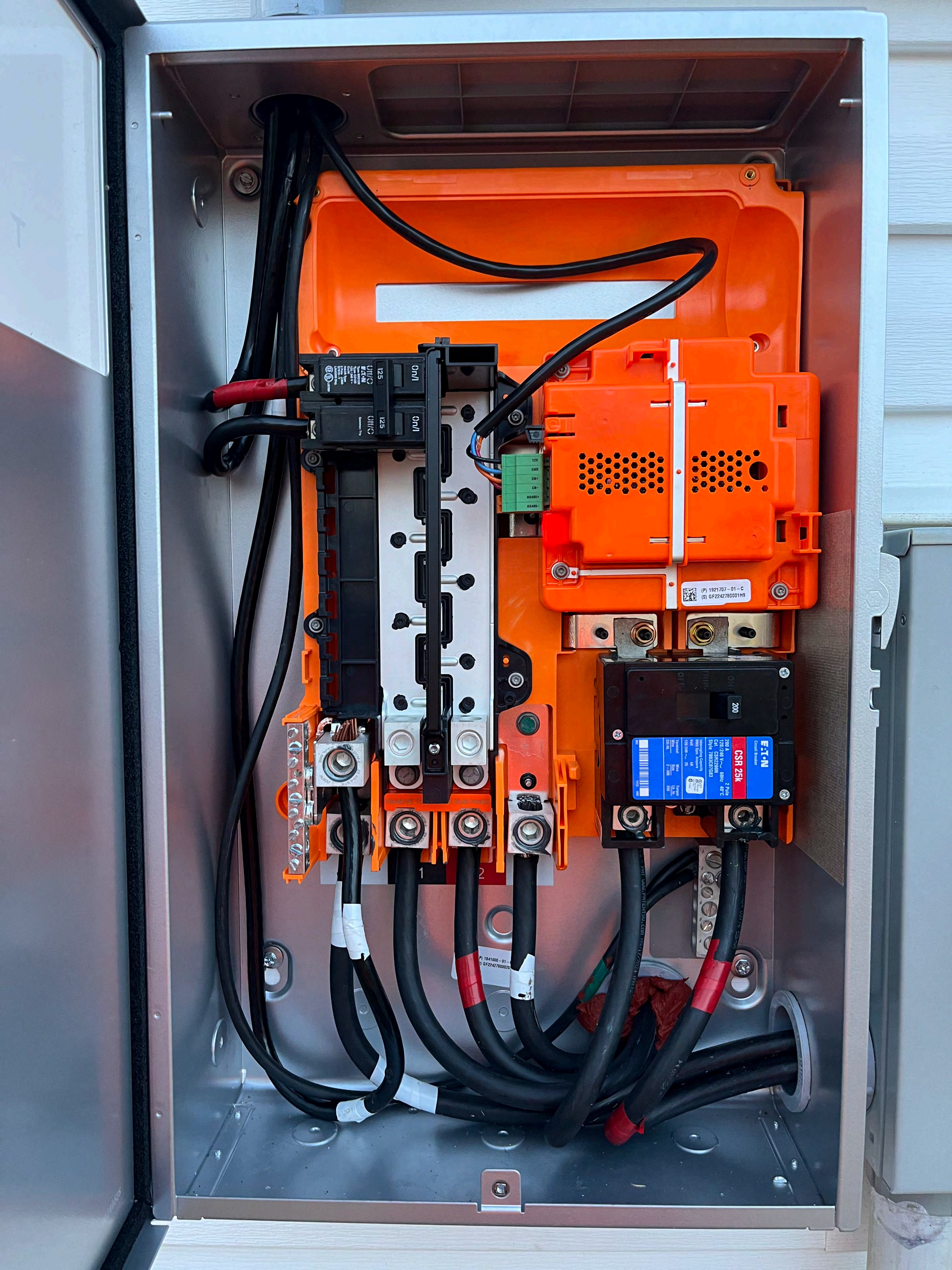
TESLA











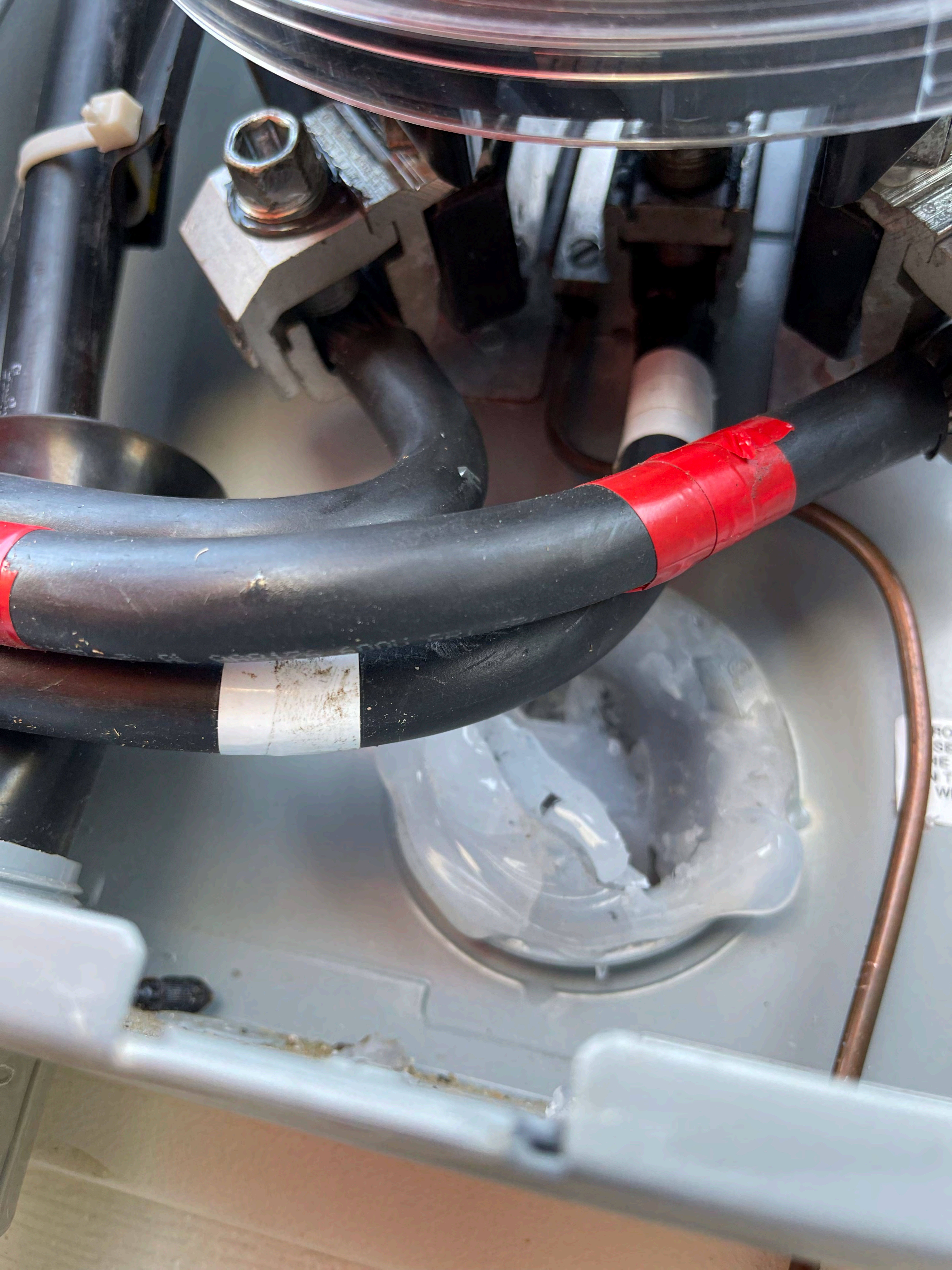
125 On/I  
125 On/I

12V  
GND  
CR+  
CR-  
RS485+

E-T-N  
25kV  
2 Pole  
200 A  
120/240 V ~ 60Hz - 48°C  
CSR 25k  
Circuit Breaker

P1 1921707-01-C  
P1 1841080-01-C







<b>⚠ DANGER</b>		<b>⚠ PELIGRO</b>
Hazardous Voltage. Will cause death, serious injury or substantial property damage.		Voltaje peligroso. Causará la muerte, lesiones graves o daño substantial a la propiedad.
Turn off power supplying this equipment before working inside.		Desconecte el suministro de energía a este equipo antes de trabajar en su interior.

UTILITY METER

**CENTRON®**

0002FA2DA0  
FCC ID: SK9AM7 IC: 864G-AM7 MODEL: AM7

**02.0000000**  
kW h

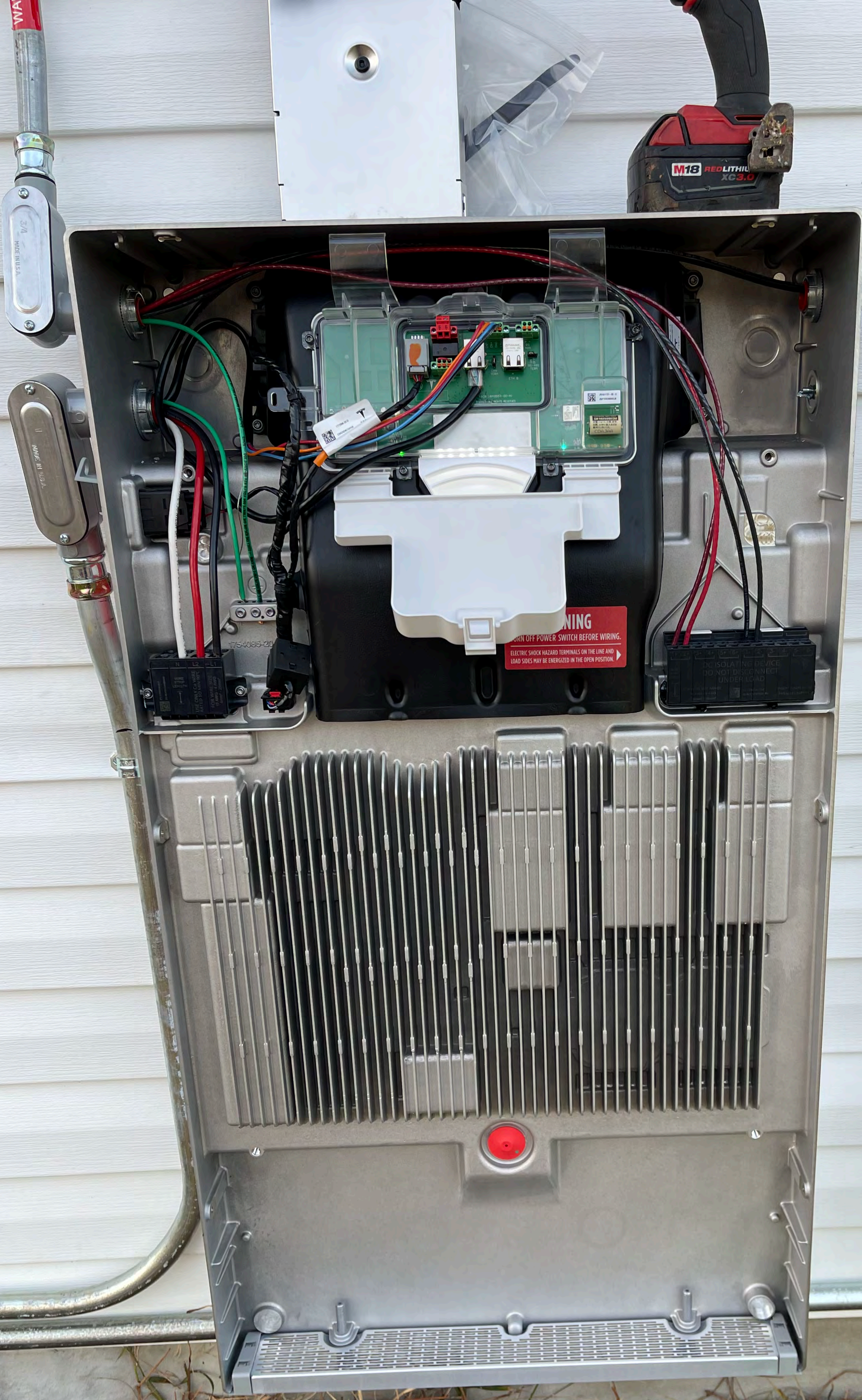
CL200 240V 3W TYPE C2M 30TA 1.0Kh  
**\*ZZZ 0F9267 H67\*** CA 0.5  
DUKE ENERGY PROGRESS FM2S  
348 789 463 60HZ

F120529  
OpenWay  
by **tron**  
2/23

**TALON**  
ENCLOSURE

**⚠ WARNING ⚠**  
**THREE POWER SOURCES**  
SOURCES: UTILITY GRID, BATTERY  
AND PV SOLAR ELECTRIC SYSTEM



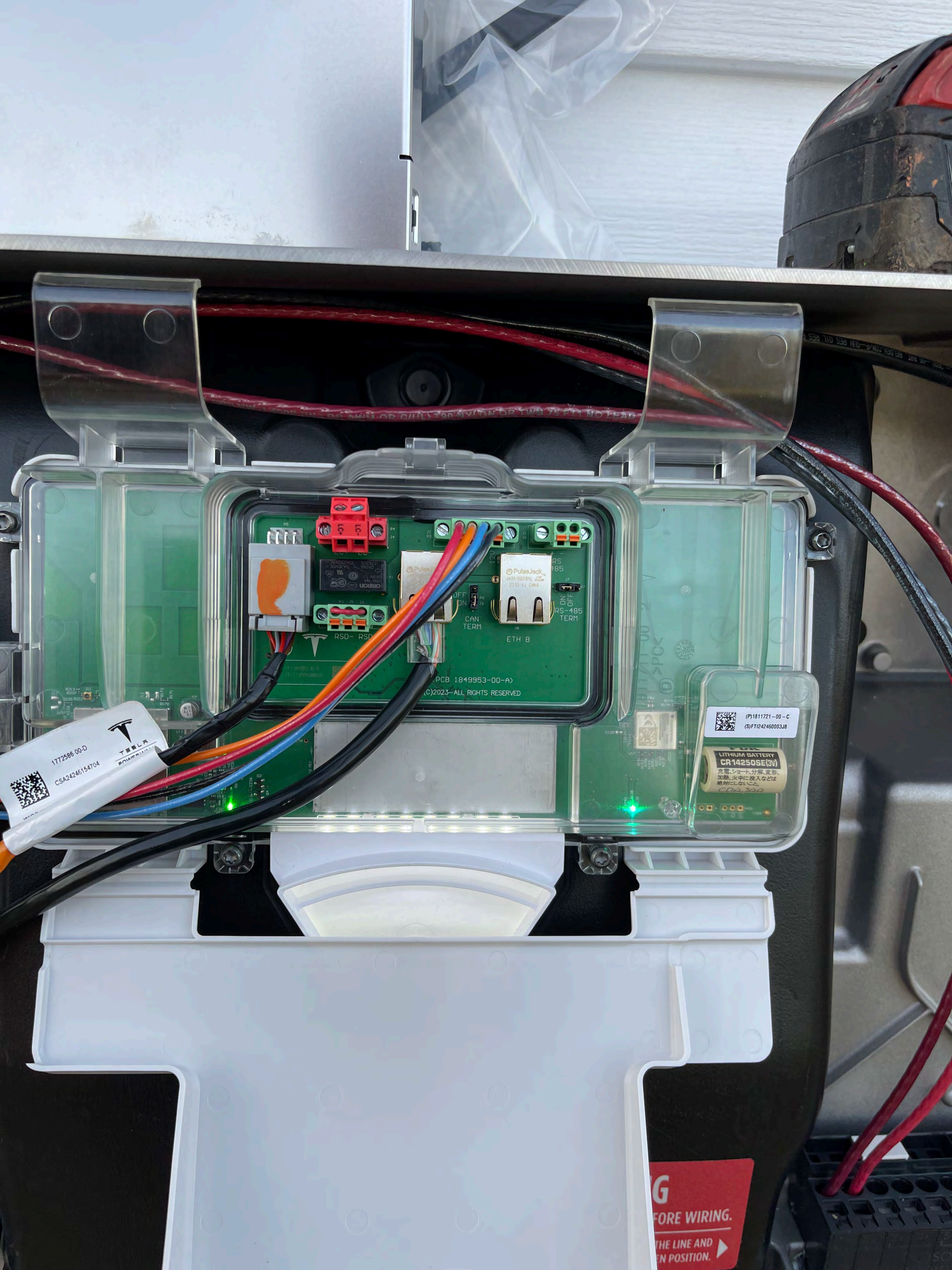


**WARNING**  
TURN OFF POWER SWITCH BEFORE WIRING.  
ELECTRIC SHOCK HAZARD TERMINALS ON THE LINE AND  
LOAD SIDES MAY BE ENERGIZED IN THE OPEN POSITION.

**PHOTOVOLTAIC SYSTEM**  
RAPID SHUTDOWN SWITCH FOR SOLAR PV SYSTEM  
ELECTRIC SHOCK HAZARD  
DO NOT DISCONNECT UNDER LOAD  
MAIN BATTERY SYSTEM DISCONNECT

**WARNING**  
ELECTRIC SHOCK HAZARD  
DO NOT DISCONNECT UNDER LOAD  
MAIN BATTERY SYSTEM DISCONNECT





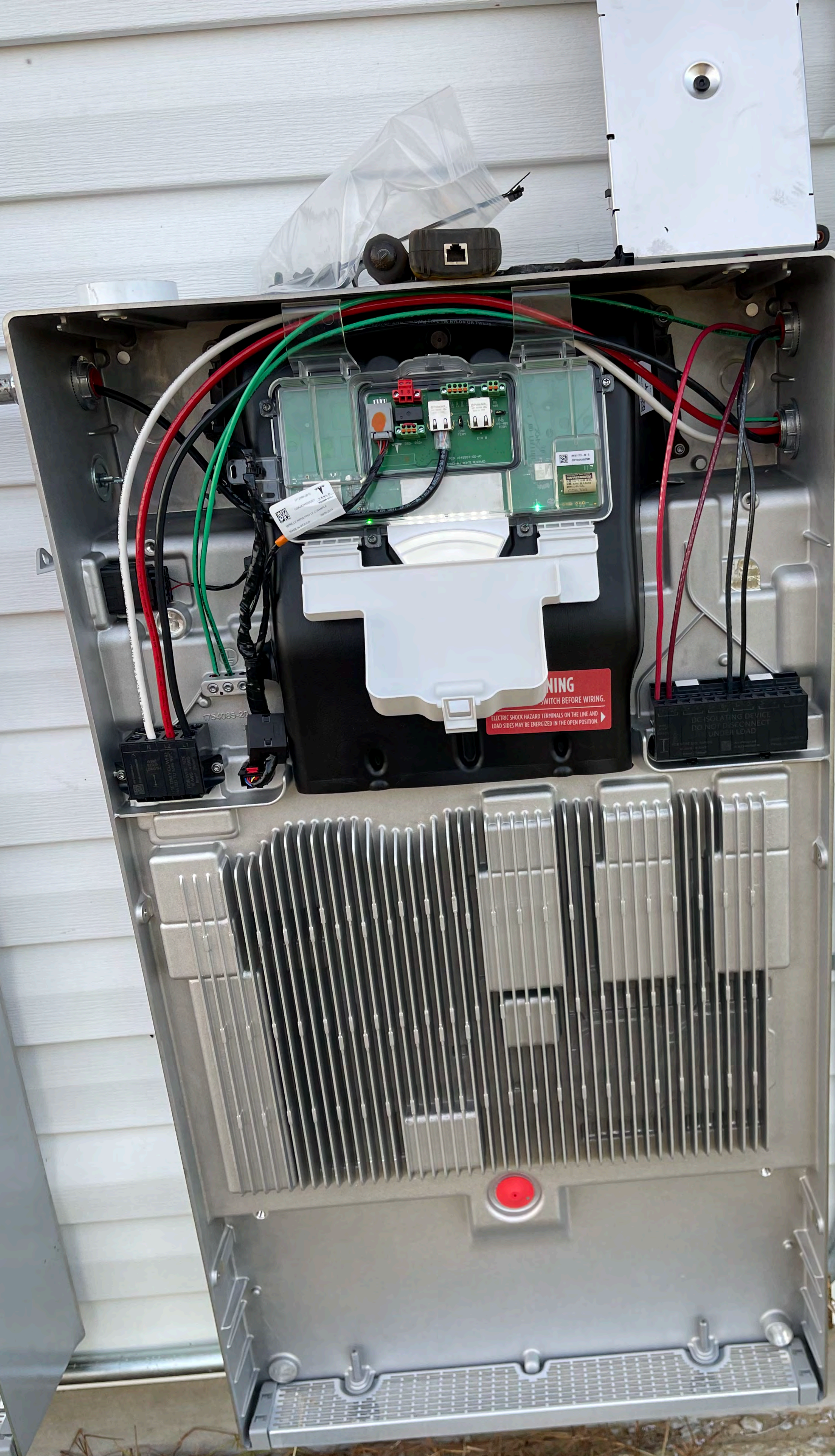
1772586-00-D  
CSA24246154704  
TESLA  
POWERTRAIN

(P)1811721-00-C  
(S)FT1242460003J8  
LITHIUM BATTERY  
CR14250SE(3V)  
充電、ショート、分解、変形、  
加熱、火中に投入などは  
絶対禁止です。  
CPA 703

PCB 1849953-00-A)  
(C)2023-ALL RIGHTS RESERVED

G  
BEFORE WIRING.  
THE LINE AND  
IN POSITION.









SSID: TestPW\_ZNYCUC  
Password: JIGRECYTB  
FT1242570000Y

**WARNING**  
TURN OFF POWER SWITCH BEFORE WIRING.  
ELECTRIC SHOCK HAZARD TERMINALS ON THE LINE AND  
LOAD SIDES MAY BE ENERGIZED IN THE OPEN POSITION.

DC ISOLATING DEVICE  
DO NOT DISCONNECT  
UNDER LOAD

1754085-20



**RAPID SHUTDOWN SWITCH FOR SOLAR PV SYSTEM**  
 PV SYSTEM DISCONNECT (DC) INSIDE

ON

OFF

**PHOTOVOLTAIC SYSTEM DC DISCONNECT**

OPERATING VOLTAGE	60-550 VDC
OPERATING CURRENT	10.87 AMPS
MAX SYSTEM VOLTAGE	600 VDC
SHORT CIRCUIT CURRENT	11.51 AMPS
CHARGE CONTROLLER MAX	NA AMPS

03-110

**MAIN BATTERY SYSTEM DISCONNECT**

03-304

**WARNING**  
 ELECTRIC SHOCK HAZARD  
 THE DC CONDUCTORS OF THIS PHOTOVOLTAIC SYSTEM ARE UNGROUNDED AND MAY BE ENERGIZED

05-346

MAX DC VOLTAGE OF PV SYSTEM:

TESLA POWERWALL ENERGY STORAGE SYSTEM GRID SUPPORT UTILITY INTERACTIVE & STANDALONE INVERTER

BATTERY ENERGY STORAGE SYSTEM (BESS) & PHOTOVOLTAIC (PV) POWER ELECTRONICS EQUIPMENT

TESLA PART NO. 1707000-21-K  
 SN: TG1242900012H6

RESISTANCE TO CORROSION (RSC) & CORROSION PROTECTION EQUIPMENT

RESISTANCE TO CORROSION (RSC) & PHOTOVOLTAIC (PV) SPECIFICATIONS

RESISTANCE TO CORROSION (RSC) & PHOTOVOLTAIC (PV) SPECIFICATIONS	RESISTANCE TO CORROSION (RSC) & PHOTOVOLTAIC (PV) SPECIFICATIONS
RESISTANCE TO CORROSION (RSC) & PHOTOVOLTAIC (PV) SPECIFICATIONS	RESISTANCE TO CORROSION (RSC) & PHOTOVOLTAIC (PV) SPECIFICATIONS
RESISTANCE TO CORROSION (RSC) & PHOTOVOLTAIC (PV) SPECIFICATIONS	RESISTANCE TO CORROSION (RSC) & PHOTOVOLTAIC (PV) SPECIFICATIONS



**RAPID SHUTDOWN SWITCH FOR SOLAR PV SYSTEM**  
PV SYSTEM DISCONNECT (DC) INSIDE

OFF



**PHOTOVOLTAIC SYSTEM DC DISCONNECT**

OPERATING VOLTAGE	60-550 VDC
OPERATING CURRENT	10.87 AMPS
MAX SYSTEM VOLTAGE	VDC
SHORT CIRCUIT CURRENT	11.51 AMPS
CHARGE CONTROLLER MAX	NA AMPS

**MAIN BATTERY SYSTEM DISCONNECT**

**WARNING**  
ELECTRIC SHOCK HAZARD  
THE DC CONDUCTORS OF THIS PHOTOVOLTAIC SYSTEM ARE UNGROUNDED AND MAY BE ENERGIZED

MAX DC VOLTAGE OF PV SYSTEM:

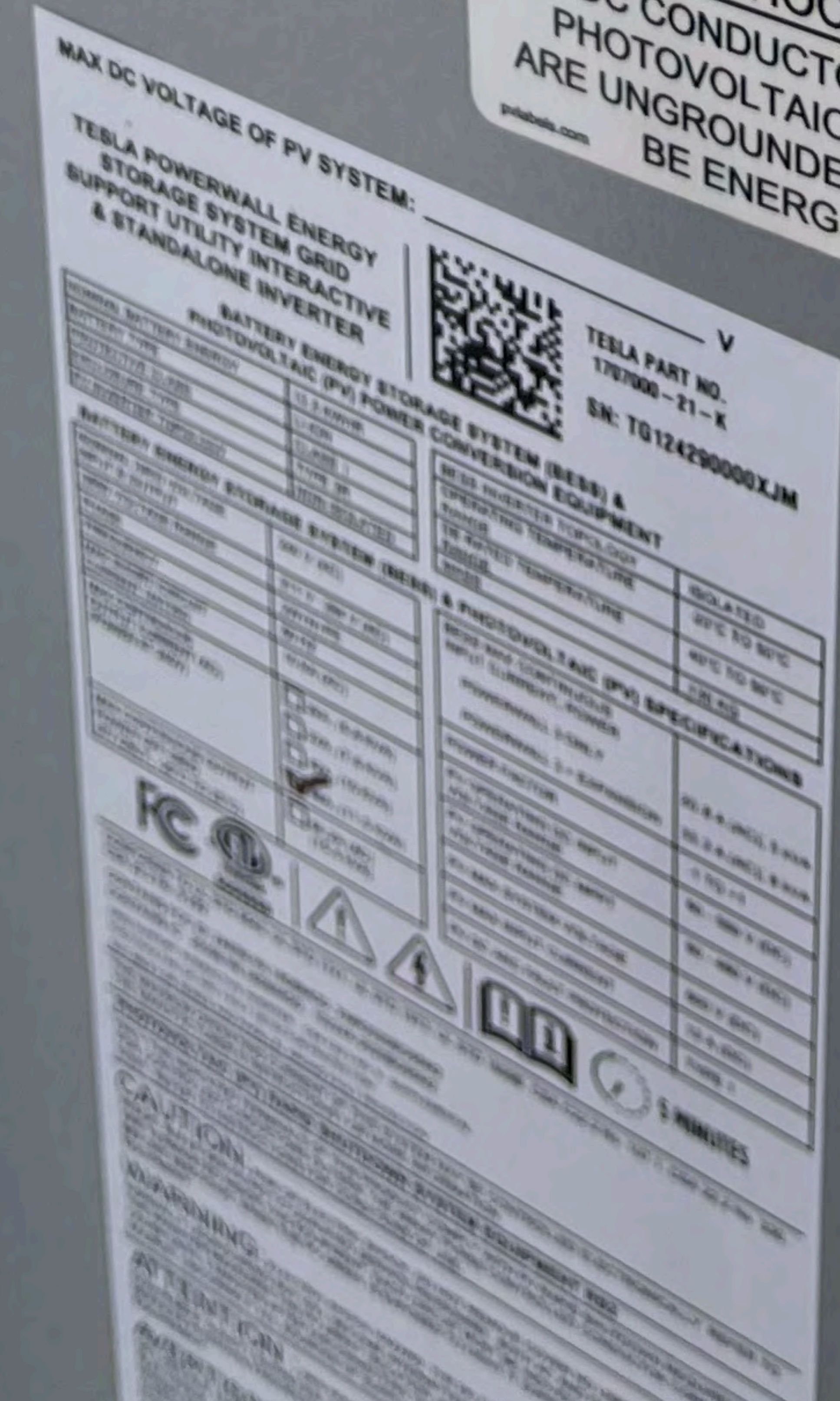
TESLA POWERWALL ENERGY STORAGE SYSTEM GRID SUPPORT UTILITY INTERACTIVE & STANDALONE INVERTER

BATTERY ENERGY STORAGE SYSTEM (BESS) & PHOTOVOLTAIC (PV) POWER CONVERSION EQUIPMENT

MAX DC VOLTAGE	600 VDC
MAX DC CURRENT	10.87 A
MAX DC POWER	6516 W
MAX DC ENERGY	10.87 kWh
MAX DC VOLTAGE (PV)	600 VDC
MAX DC CURRENT (PV)	10.87 A
MAX DC POWER (PV)	6516 W
MAX DC ENERGY (PV)	10.87 kWh

TESLA PART NO. 1707000-21-K  
SN: TQ124290000XJM

05-348





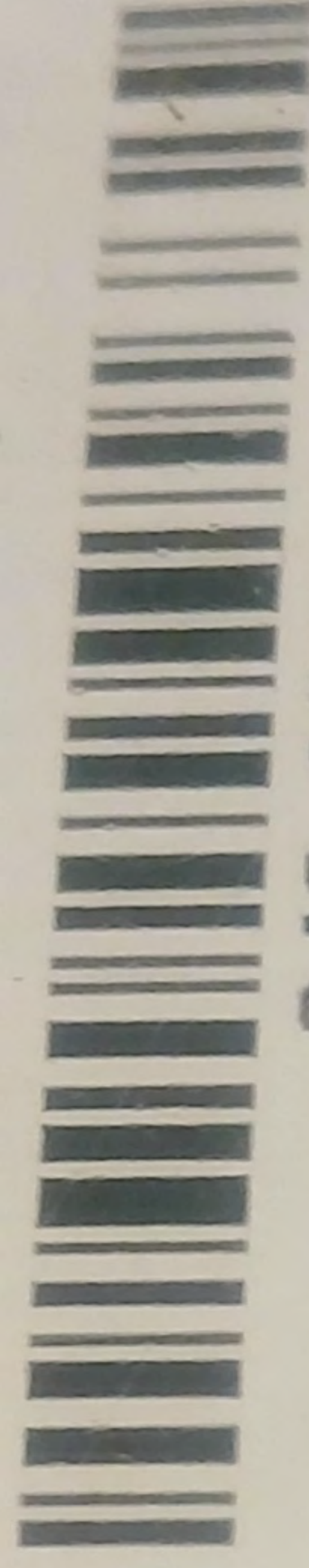
# SnapNrack

[www.snapnrack.com](http://www.snapnrack.com)  
[www.snapnrack.com/patent](http://www.snapnrack.com/patent)

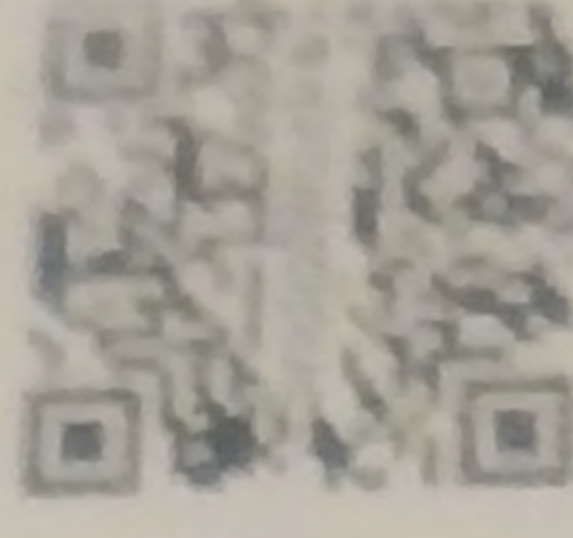
## 242-02071

SNAPNRACK, ULTRA  
RAIL MID CLAMP,  
BLACK

Product of Chihuahua, Mexico

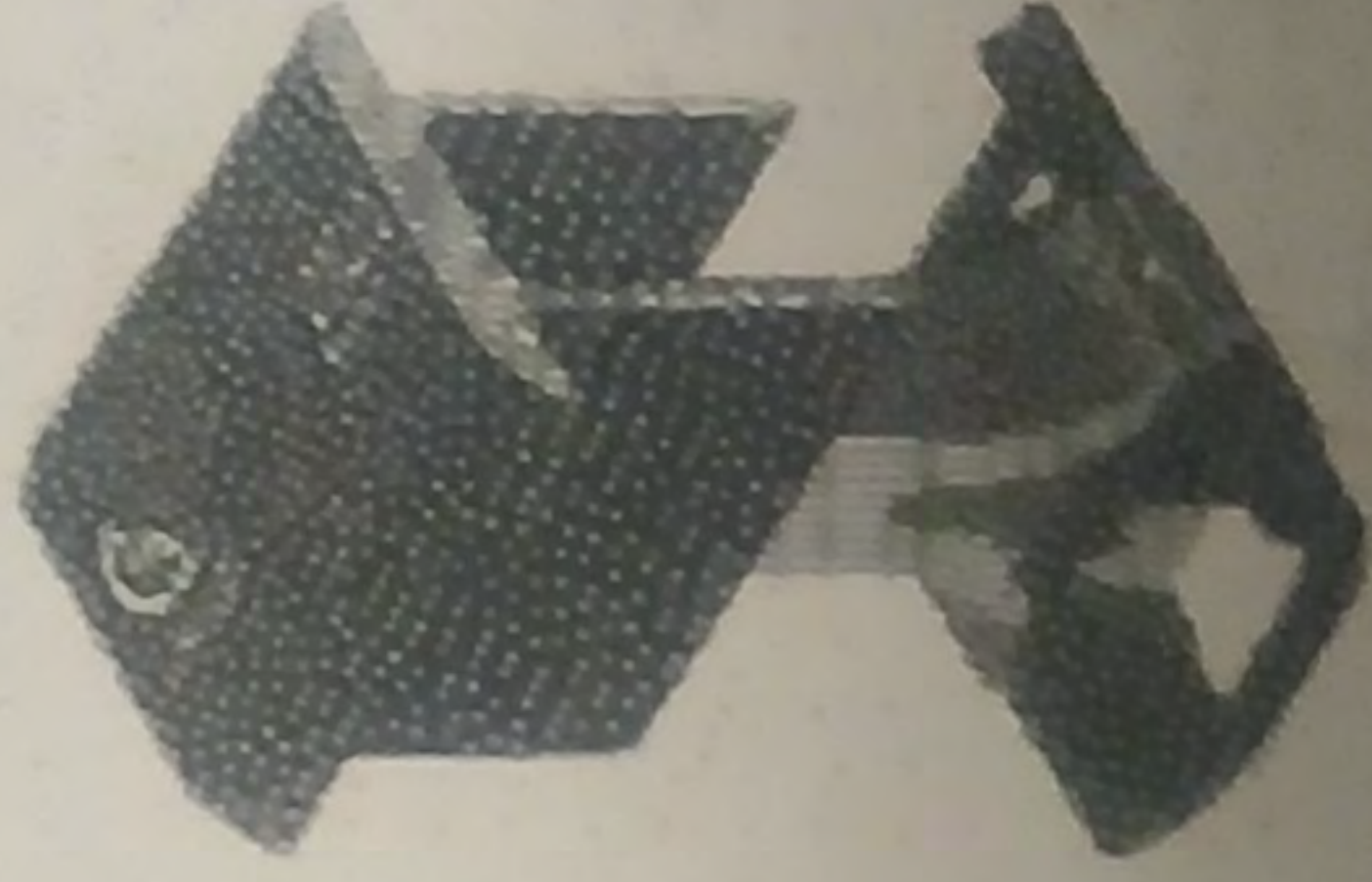


242-02071



www.snapnrack.com

SnapNrack 775 Plains Ln.  
San Luis Obispo, CA 94902



LISTED

2524165

07/17/24

QTY: 20

# SnapNrack™



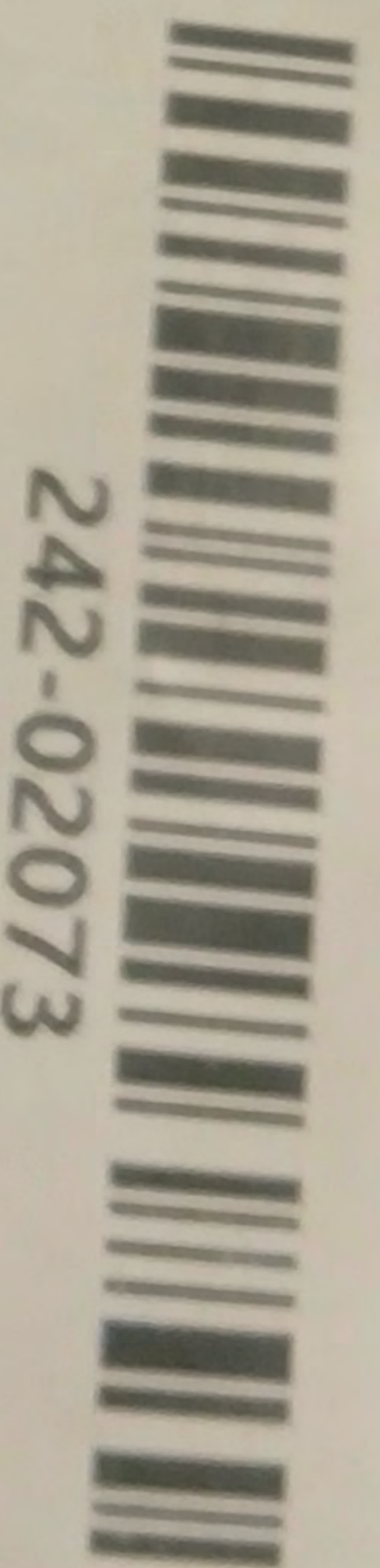
# SnapNTrack

www.snapntrack.com  
www.snapntrack.com/patent

## 242-02073

SNAPNRACK, ULTRA  
RAIL END CLAMP,  
BLACK

Product of Chihuahua, Mexico



242-02073



25440312

SnapTrack 775 Perry Ln.  
San Luis Obispo, CA 93401

2540312

08/16/24

QTY: 20

# SnapNTrack™



SnapNrack

242-10038

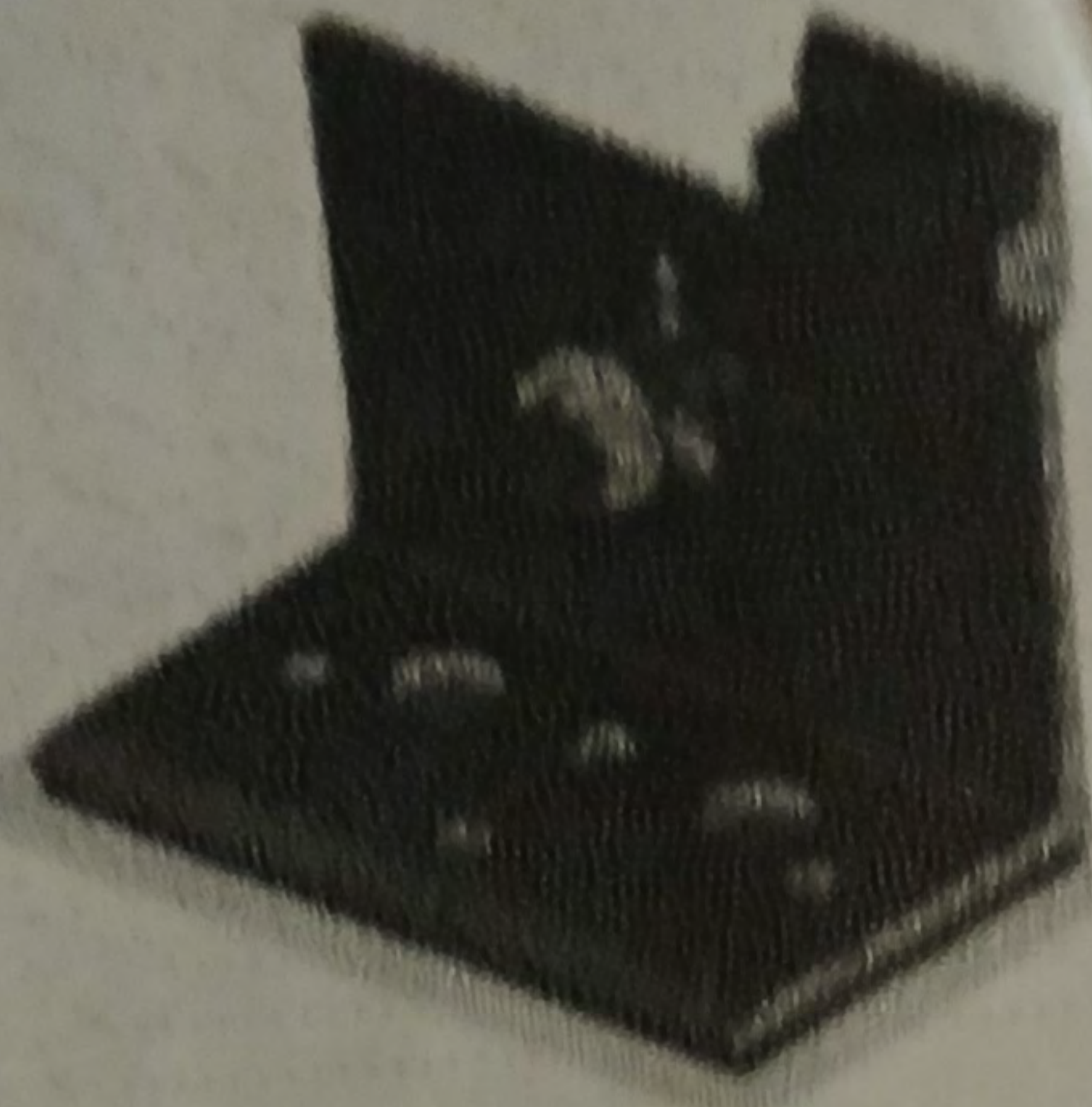


Instalación manual

www.snapnrack.com  
www.snapnrack.com/patent

242-10038

SNAPNRACK,  
ULTRA RAIL  
ANCHORFOOT



SnapNrack 775 Fiero Ln.  
San Luis Obispo, CA 93401

2532671

08/21/24

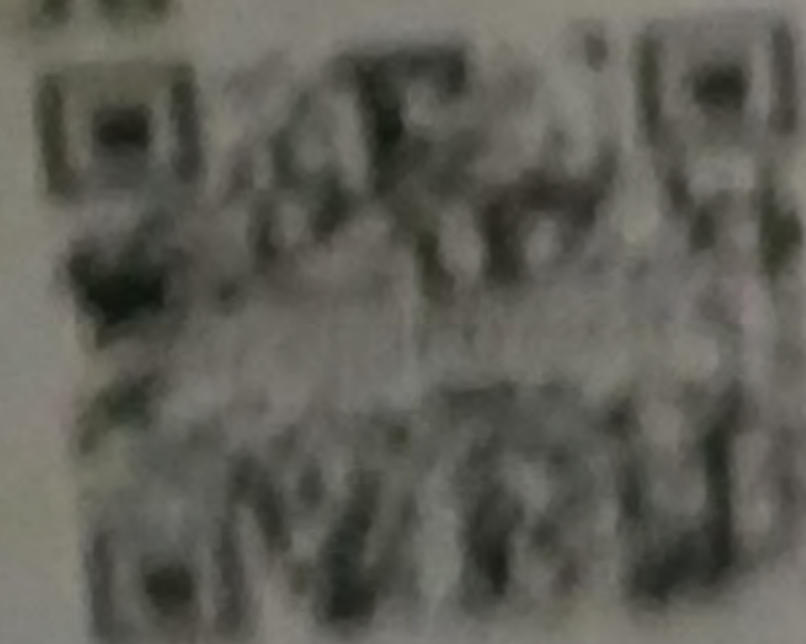
QTY: 20

Product of Chihuahua, Mexico

SnapNrack



242-10038



242-10038

SnapNrack 775 Fiero Ln.  
San Luis Obispo, CA 93401



# SnapNrack

[www.snapnrack.com](http://www.snapnrack.com)  
[www.snapnrack.com/patent](http://www.snapnrack.com/patent)

## 242-02071

SNAPNRACK, ULTRA  
RAIL MID CLAMP,  
BLACK



Plant of Chihuahua, Mexico



242-02071



LISTED



installation-manuals

SnapNrack 775 Fiero Ln.  
San Luis Obispo, CA 93401

2524165

07/17/24

QTY: 120



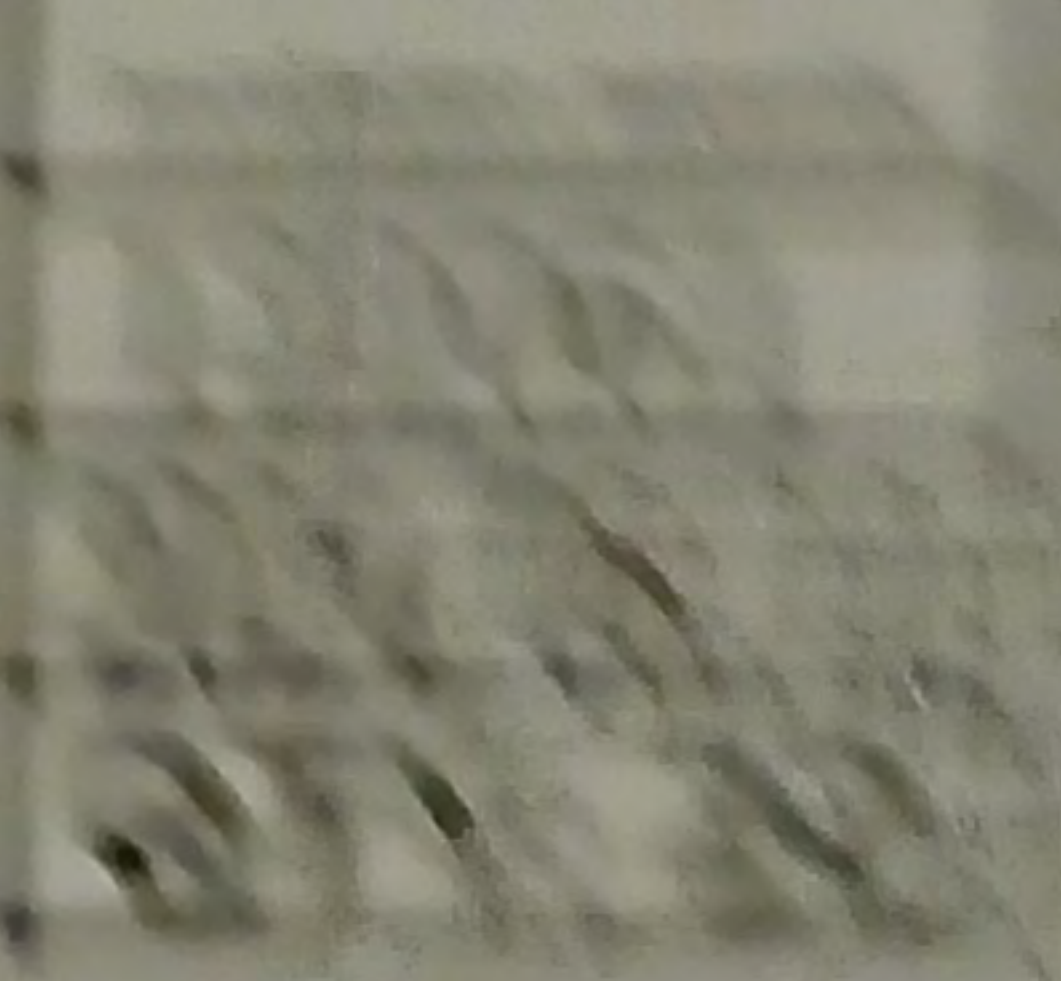
SnapTrack

Ultrasonic Mounting Solutions

www.snaptrack.com

232-02452

SNAPTRACK,  
UR-40 END CAP



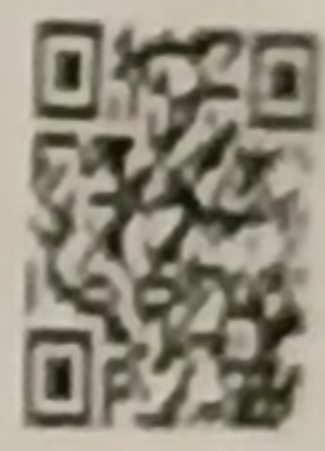
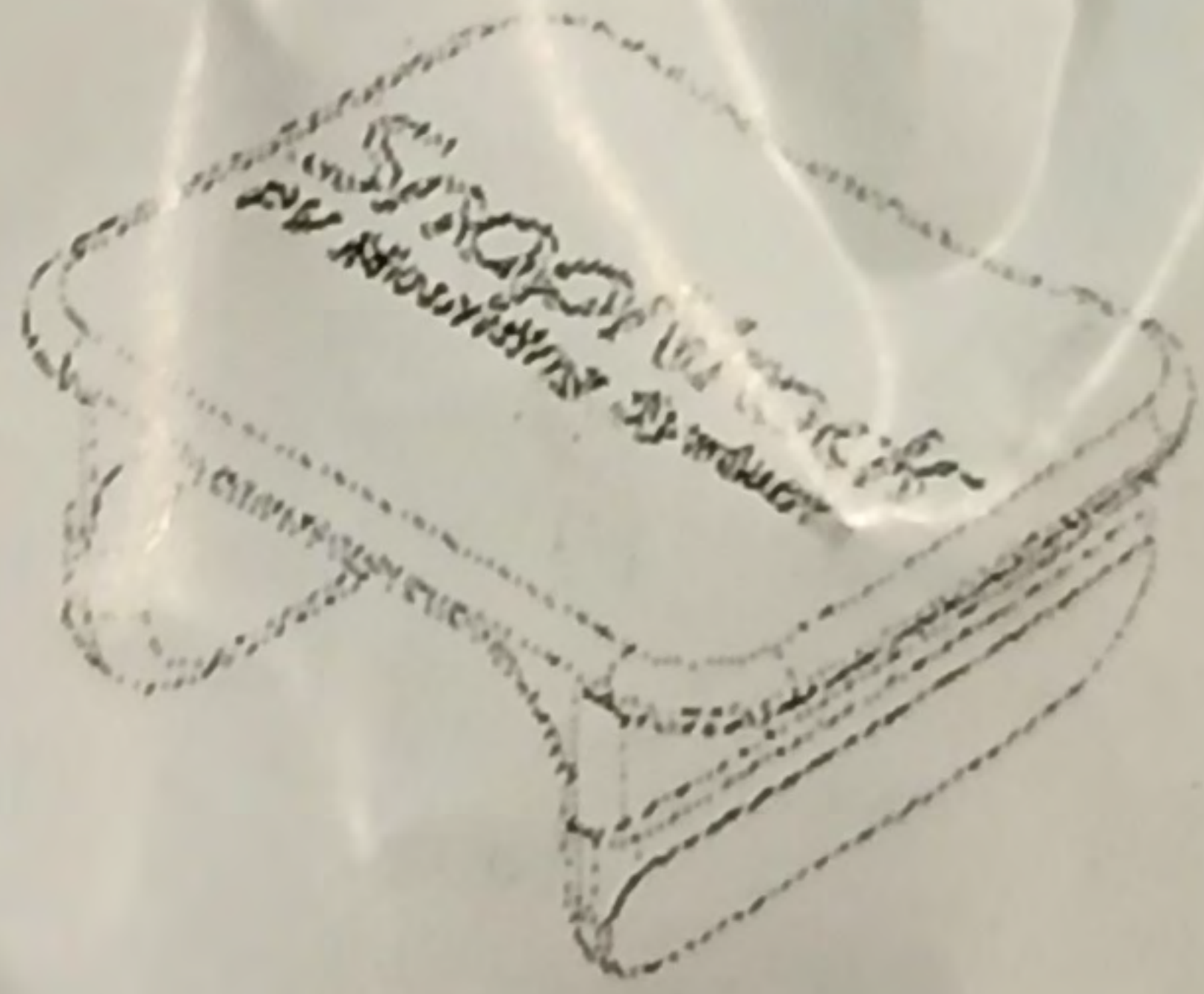


**apNrack™**  
Mounting Solutions

www.snapnack.com



**232-01106**  
**SNAPNRACK,**  
**SNAP-IN WIRE**  
**RETENTION CLIP**



installation manual

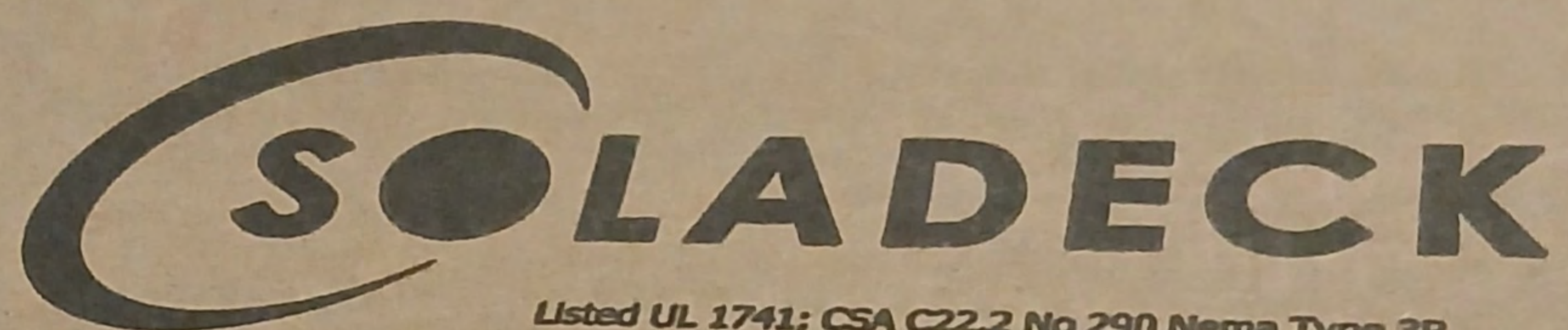
QTY: 20

Snapnack

232-026

SNAPNRACK





Listed UL 1741; CSA C22.2 No 290 Nema Type 3R

---

Model 0599B



Model 0599G



---

**Units Include: Base, Cover, Instructions and Hardware**

RSTC Enterprises Inc., Eau Claire, WI

[www.soladeck.com](http://www.soladeck.com)

**Manufactured and Assembled in the USA**



WARNING: PHOTOVOLTAIC  
POWER SOURCE

PV LABELS  
03-314  
MADE IN USA

6 03289 03314 3

LIQUID TUFF TYPE LPMC 3/4 (1)





WARNING: PHOTOVOLTAIC  
POWER SOURCE

UFP Library  
B3

UFP Library  
B3



**WARNING: PHOTOVOLTAIC  
POWER SOURCE**

**WARNING: PHOTOVOLTAIC  
POWER SOURCE**











WARNING: PHOTOVOLTIC  
POWER SOURCE





LIQUID TUFF™ TYPE LFMC 3/4 (21)  
80°C DRY 60°C WET  
70°C DIL-RES



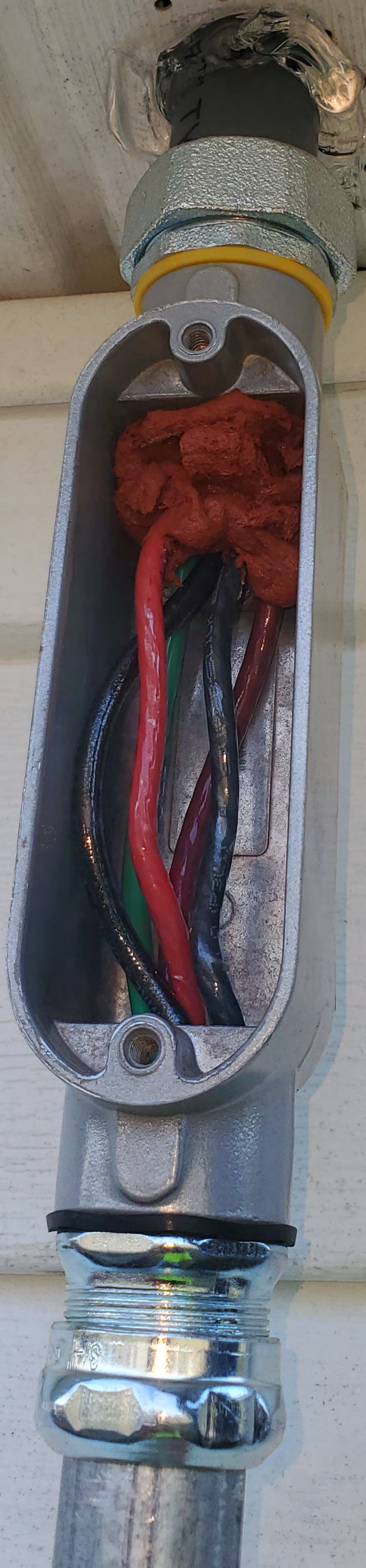


WIRING: PHOTOVOLTAGE  
POWER SOURCE

APA

1/2" (2)









NS22A1E23C6596

**CertainTeed**  
SAINT-GOBAIN

Made in Indonesia

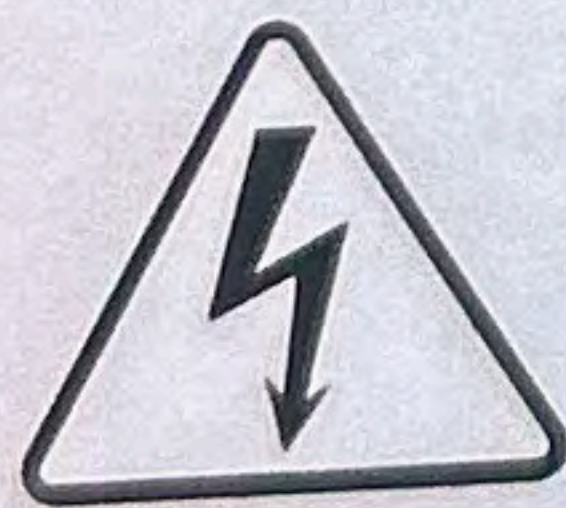
**MODEL TYPE : CT440HC11-06**

Nominal Maximum Power	(Pmax):	440W
Maximum operating Voltage	(Vmp):	41.20V
Maximum operating Current	(Imp):	10.68A
Open Circuit Voltage	(Voc):	49.90V
Short Circuit Current	(Isc):	11.23A
Maximum System Voltage	:	1500V
Maximum Series Fuse Rating	:	20A

All electrical data at Standart Test Conditions (STC): Irradiance of 1000W/m<sup>2</sup>, spectrum AM1.5 and temperature of 25°C.

Fire Rating: CLASS C/ TYPE I  
Protection Class: CLASS II

**WARNING - ELECTRIC HAZARD**



This solar module produces electrical voltage when exposed to sunlight or intense artificial lights. Proper precautions associated with electrical power systems must be taken while handling and installing this product.

**PLEASE READ THE INSTRUCTION MANUAL FOR MORE INFORMATION PRIOR TO INSTALLATION.**

Certain Teed limited Warranty is valid only for products purchased either directly from Certain Teed or from an authorized reseller who is in your region or authorized with written permission from Certain Teed.



Conforms to UL STD.  
UL61730-1/-2,  
UL61215-1/-1-1/-2.  
Certified to CSA STD.  
C22.2 #61730-1/-2.

20 Moores Rd, Malvern,  
PA 19355  
TEL: 1-800-233-8990