



FROM MR. VAHEDI



Postage paid by addressee - do not take this portion of this form

The front of this envelope will be automatically and permanently sealed provided it is not opened, damaged or tampered with. This feature is available on all postage meter envelopes.

POSTAGE PAID BY ADDRESSEE
Postmaster: Return to addressee if not delivered.
No postage necessary if mailed in the United States.
Postage paid by addressee.

Central Harold Hospital

Name Address City State Zip	(Leave blank) (Leave blank) (Leave blank) (Leave blank) (Leave blank)
---	---

Membership Number: 123456789
 Membership Name: John Doe
 Membership Address: 123 Main St, San Francisco CA 94102
 Membership Phone Number: (415) 555-1234
 Membership Email Address: john.doe@example.com
 Membership Status: Active

POSTAGE PAID BY ADDRESSEE







REC Alpha Pure-RX Series
REC400AA Pure-RX
Serial Number: F00-700582-2981

Phone: +86 755 8379
www.rec.com.cn

Power Output (Power): 480 W

Wave Clipping: 0% - 10.1%

Power Production Tolerance: ± 3 %

Rated Voltage (Vrms): 54.9 V

Rated Current (Irms): 8.38 A

Open Circuit Voltage (Voc): 147 - 216 V

Short Circuit Current (Isc): 147 - 216 A

Maximum System Voltage (Vmax): 1000 V

Maximum Series Fuse (DC) (MFL): 25 A

Maximum Series Fuse (DC) (REC): 25 A

Design Load:

Maximum Test Load: 4-480W / 2560 VA*

Maximum Input: 1000 Vrms / 15.8 A rms / 200 VA*

*The maximum allowed for the maximum recommended operating conditions.



Compliant to:
UL 60950-1
UL 60730-1
UL 60361-1
UL 60361-2



Compliant to:
UL 60950-1
UL 60730-1



UK
CA

Manufactured: 06-08-2024



Warning: shock or hazard. This module produces a normally non-ionizing electromagnetic field.
CAUTION: DO NOT DISCONNECT UNDER LOAD

Attention: Please do not disassemble. To reduce safety risks, do not plug and unplug directly.

ATTENTION: NO PMS OCCURRENCE FOR 30 MIN TENSION

For long-term use, please refer to the user manual for detailed information and for a list of PMS.

Model: REC400AA Pure-RX (REC)

Manufacturer: REC Power Electronics Co., Ltd.

Address: No. 1000000, Shenzhen, China

Phone: +86 755 8379

www.rec.com.cn







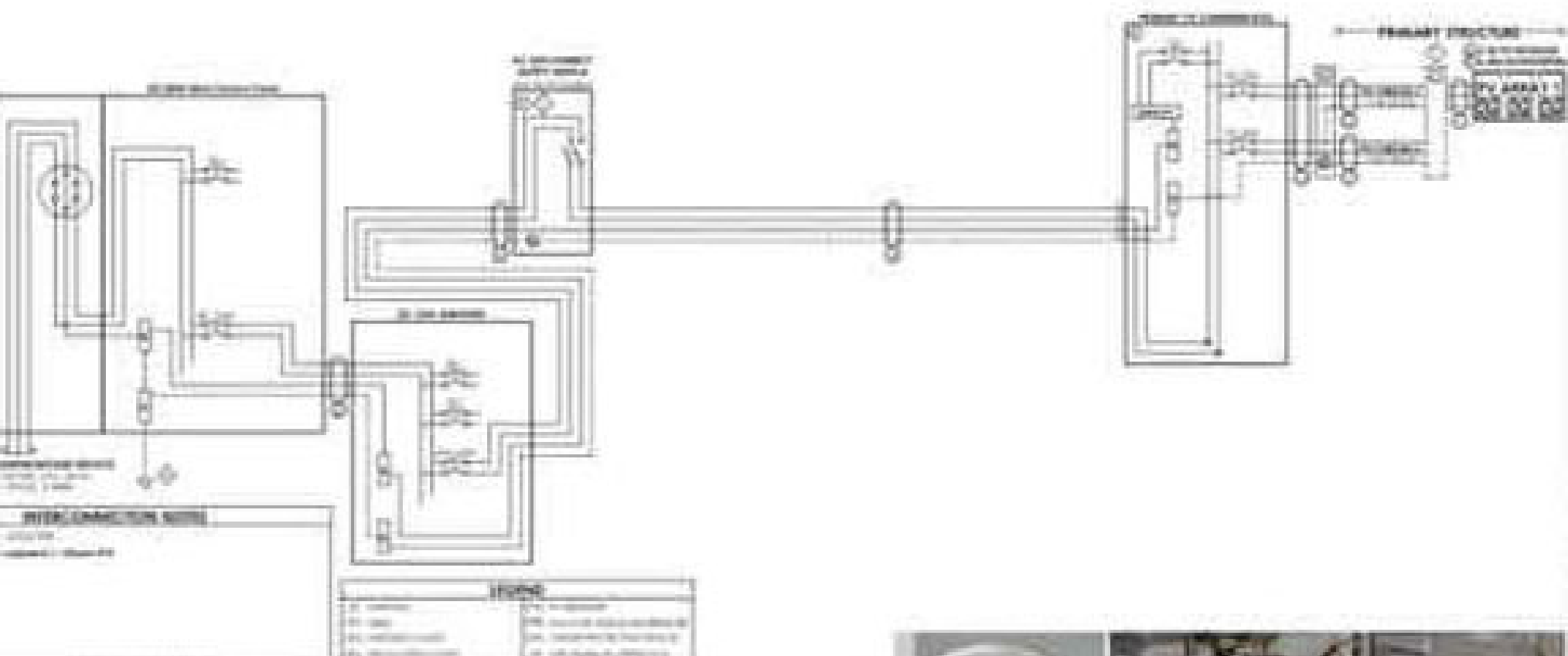






Technical specifications label on the solar panel, including a barcode and various data points.





Equipment Notes:

1. All equipment shall be listed and labeled for use in the environment in which it is to be used.

2. All equipment shall be installed in accordance with the manufacturer's instructions.

3. All equipment shall be installed in a location that is accessible for maintenance and repair.

4. All equipment shall be installed in a location that is protected from physical damage.

5. All equipment shall be installed in a location that is protected from environmental conditions.

6. All equipment shall be installed in a location that is protected from fire and explosion.

7. All equipment shall be installed in a location that is protected from theft and vandalism.

8. All equipment shall be installed in a location that is protected from unauthorized access.

9. All equipment shall be installed in a location that is protected from unauthorized use.

10. All equipment shall be installed in a location that is protected from unauthorized modification.

11. All equipment shall be installed in a location that is protected from unauthorized removal.

12. All equipment shall be installed in a location that is protected from unauthorized disposal.

13. All equipment shall be installed in a location that is protected from unauthorized destruction.

14. All equipment shall be installed in a location that is protected from unauthorized damage.

15. All equipment shall be installed in a location that is protected from unauthorized tampering.

16. All equipment shall be installed in a location that is protected from unauthorized interference.

17. All equipment shall be installed in a location that is protected from unauthorized disruption.

18. All equipment shall be installed in a location that is protected from unauthorized interruption.

19. All equipment shall be installed in a location that is protected from unauthorized cessation.

20. All equipment shall be installed in a location that is protected from unauthorized termination.

21. All equipment shall be installed in a location that is protected from unauthorized completion.

22. All equipment shall be installed in a location that is protected from unauthorized closure.

23. All equipment shall be installed in a location that is protected from unauthorized opening.

24. All equipment shall be installed in a location that is protected from unauthorized access.

25. All equipment shall be installed in a location that is protected from unauthorized entry.

26. All equipment shall be installed in a location that is protected from unauthorized exit.

27. All equipment shall be installed in a location that is protected from unauthorized departure.

28. All equipment shall be installed in a location that is protected from unauthorized removal.

29. All equipment shall be installed in a location that is protected from unauthorized disposal.

30. All equipment shall be installed in a location that is protected from unauthorized destruction.

Equipment Description:

1. The equipment shall be a [description of equipment].

2. The equipment shall be capable of [description of capabilities].

3. The equipment shall be installed in a [description of location].

4. The equipment shall be connected to a [description of power source].

5. The equipment shall be controlled by a [description of control system].

6. The equipment shall be maintained in accordance with the manufacturer's instructions.

7. The equipment shall be inspected regularly for proper operation.

8. The equipment shall be repaired or replaced as needed.

9. The equipment shall be tested before use.

10. The equipment shall be labeled with the manufacturer's name and model number.

11. The equipment shall be labeled with the date of installation.

12. The equipment shall be labeled with the name of the installer.

13. The equipment shall be labeled with the name of the supervisor.

14. The equipment shall be labeled with the name of the project manager.

15. The equipment shall be labeled with the name of the client.

16. The equipment shall be labeled with the name of the contractor.

17. The equipment shall be labeled with the name of the subcontractor.

18. The equipment shall be labeled with the name of the vendor.

19. The equipment shall be labeled with the name of the distributor.

20. The equipment shall be labeled with the name of the manufacturer.

21. The equipment shall be labeled with the name of the supplier.

22. The equipment shall be labeled with the name of the wholesaler.

23. The equipment shall be labeled with the name of the retailer.

24. The equipment shall be labeled with the name of the dealer.

25. The equipment shall be labeled with the name of the agent.

26. The equipment shall be labeled with the name of the broker.

27. The equipment shall be labeled with the name of the intermediary.

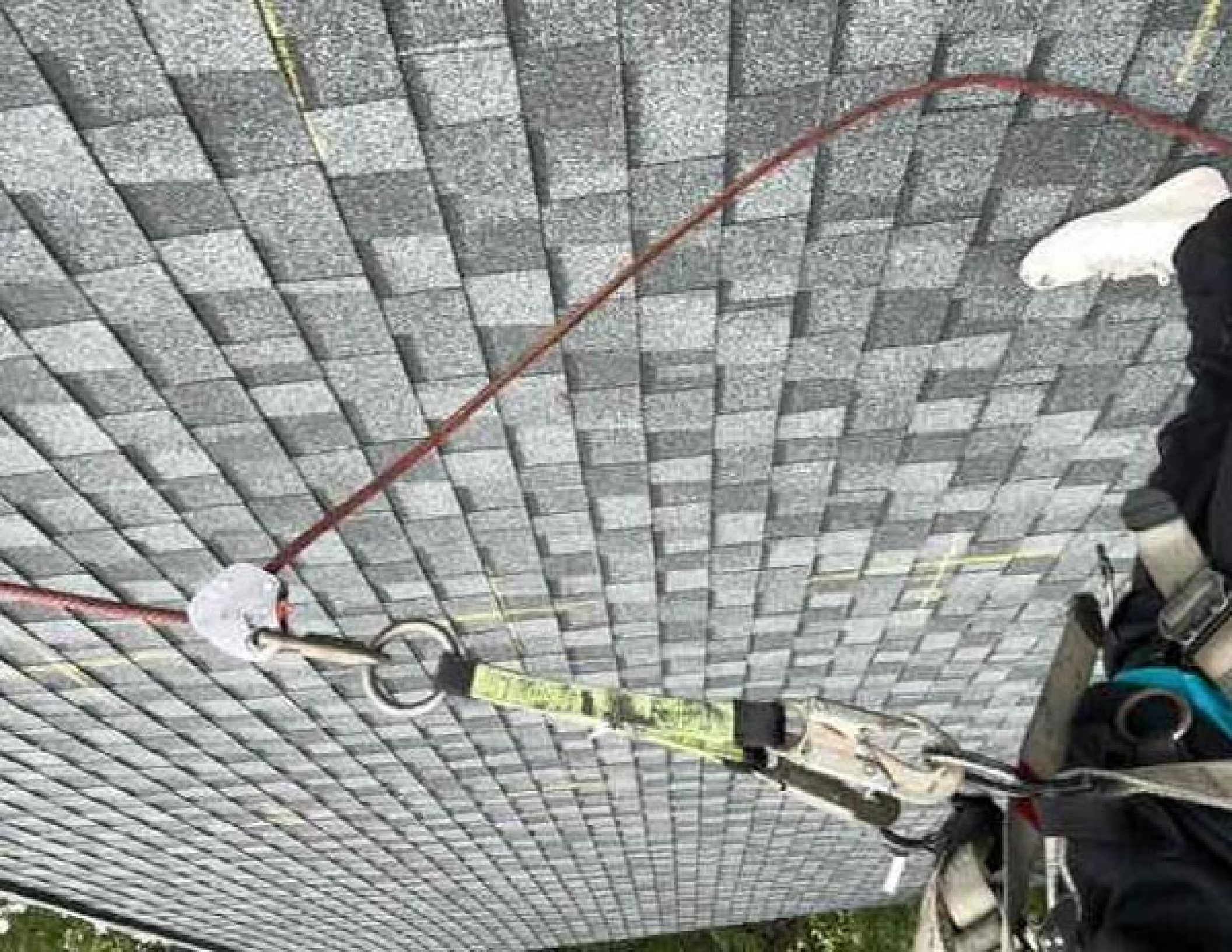
28. The equipment shall be labeled with the name of the facilitator.

29. The equipment shall be labeled with the name of the coordinator.

30. The equipment shall be labeled with the name of the organizer.



PHOTO 1





2 3 4 5 6 7

REC [Barcode]



ONRAC 5PM INFINITY BACKING

UNIRAC SFM INFINITY RACKING

FOR SCOURTED AND SECURED SOLAR STATIONS

© 2015 UNIRAC



240-00388-17
250VAC 20A
+79°C 2423

215





Power Production

Enabled

Production

Today

0.00 kWh

Lifetime

0.00 kWh

Consumption

Today

0.00 kWh

Lifetime

0.00 kWh

Grid Profile

IEEE 1547 default, 2015 (7.9.1.1)

Powerline Scan (Auto)

Scanned

Powerline Scan (Auto)

ENPHASE
By Design, Not by Accident

INSTALLATION GUIDE

SAFETY

INSTALLATION

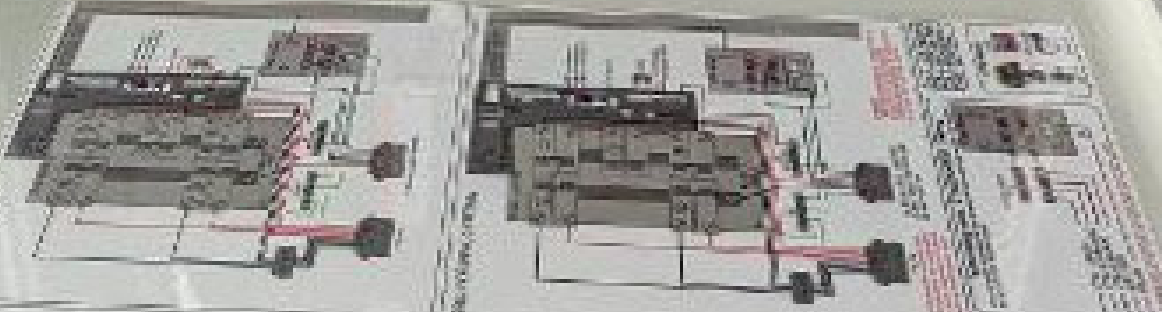
OPERATION

MAINTENANCE

WARRANTY

CONTACT US

ENPHASE
10000 E. Harvard Ave.
Denver, CO 80231
1-800-451-7373
www.enphase.com



The diagram shows a solar panel array connected to a string inverter, which is connected to a meter and then to the utility grid. The diagram is labeled with 'ENPHASE' and 'SAFETY'.

WARNING

DO NOT REMOVE THE INVERTER FROM THE RACKS UNTIL YOU HAVE BEEN TRAINED TO DO SO. FAILURE TO FOLLOW THESE INSTRUCTIONS MAY RESULT IN PERSONAL INJURY OR PROPERTY DAMAGE. IT IS THE USER'S RESPONSIBILITY TO FOLLOW THE INSTRUCTIONS PROVIDED WITH THIS EQUIPMENT.

INSTALLATION

OPERATION

MAINTENANCE

WARRANTY

CONTACT US



The photograph shows the Enphase system installed in a rack. The system includes a string inverter, a meter, and a solar panel array. The rack is labeled 'ENPHASE' and 'SAFETY'.

Flashing red when IQ Gateway is in progress.
 Flashing green when activation upgrade is in progress.
 On Power-Up, LED's can blink up to 30 seconds to glow.
 While remaining, wait for 2 minutes after processing of the IQ Gateway, before powering it back on.



IQ Combiner 5 Photovoltaic Combiner Box X-IQ-AM1-240-5



Scan for CAG

Electrical ratings

Voltage 240V ~, 60Hz
DC Breakers 80A MAX (combined)
DC Inputs 64A MAX (combined)
Output 65A MAX, 90A MAX feeder OCPD
Temperature 46°C MAX ambient



IQ GATEWAY CONTAINS
 FCC ID: W53-W53D5V0
 IC ID: 5042A-W53D5V0
 CTRL BOARD CONTAINS
 FCC ID: W00-W00E3
 IC ID: 2843A-W00E3

202431005601

S/N: **202431005601**

P/N: **202431005601**
883-00358 52

Dedicated solar and DG Combiner Box - do not add loads.
 10 AMP or 15 AMP IQ Gateway Breaker not used for backfeed.

Connection

Connection	Wire sizes	Torque
DG Breaker (1, 2, 3, 4)	14-10 AWG	2.2 Nm (20 lb-in)
	8 AWG	2.8 Nm (25 lb-in)
60A Circuit Breaker only	6-4 AWG	3.0 Nm (27 lb-in)
	4-1/0 AWG	5.0 Nm (45 lb-in)
IQ Gateway Breaker (5) IQ Gateway Power Terminals	14-10 AWG	2.25 Nm (20 lb-in)
	14-10 AWG	1.4 Nm (12.4 lb-in)
Neutral and ground	Large screw	3.6 Nm (32 lb-in)
	Small screw	5.1 Nm (45 lb-in)
Main lug	10-4 AWG	5.0 Nm (45 lb-in)
	3-2/0 AWG	5.6 Nm (50 lb-in)
CTRL Connectors	CTRL Cables (C1, C2)	0.2 Nm (1.77 lb-in)
	Drain Cables (C3)	0.2 Nm (1.77 lb-in)

Copper conductors only, rated min. 75°C.
 Follow NFPA 70 (NEC), or CSA C22.1 part 1, and all local codes.

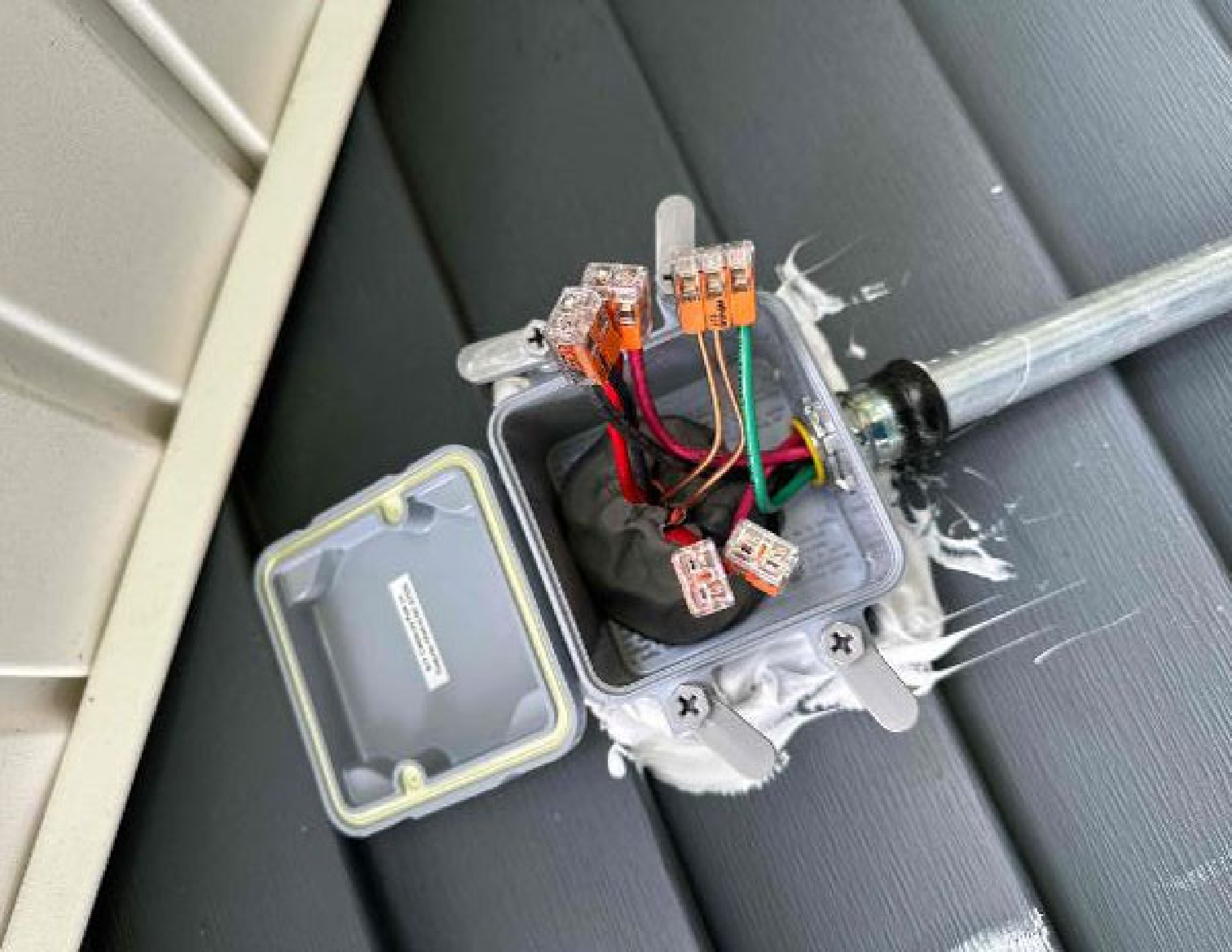
For DG Breakers larger than 20A, use wire included for 90°C based on 75°C ampacities.

Designed in California and India. Made in Mexico

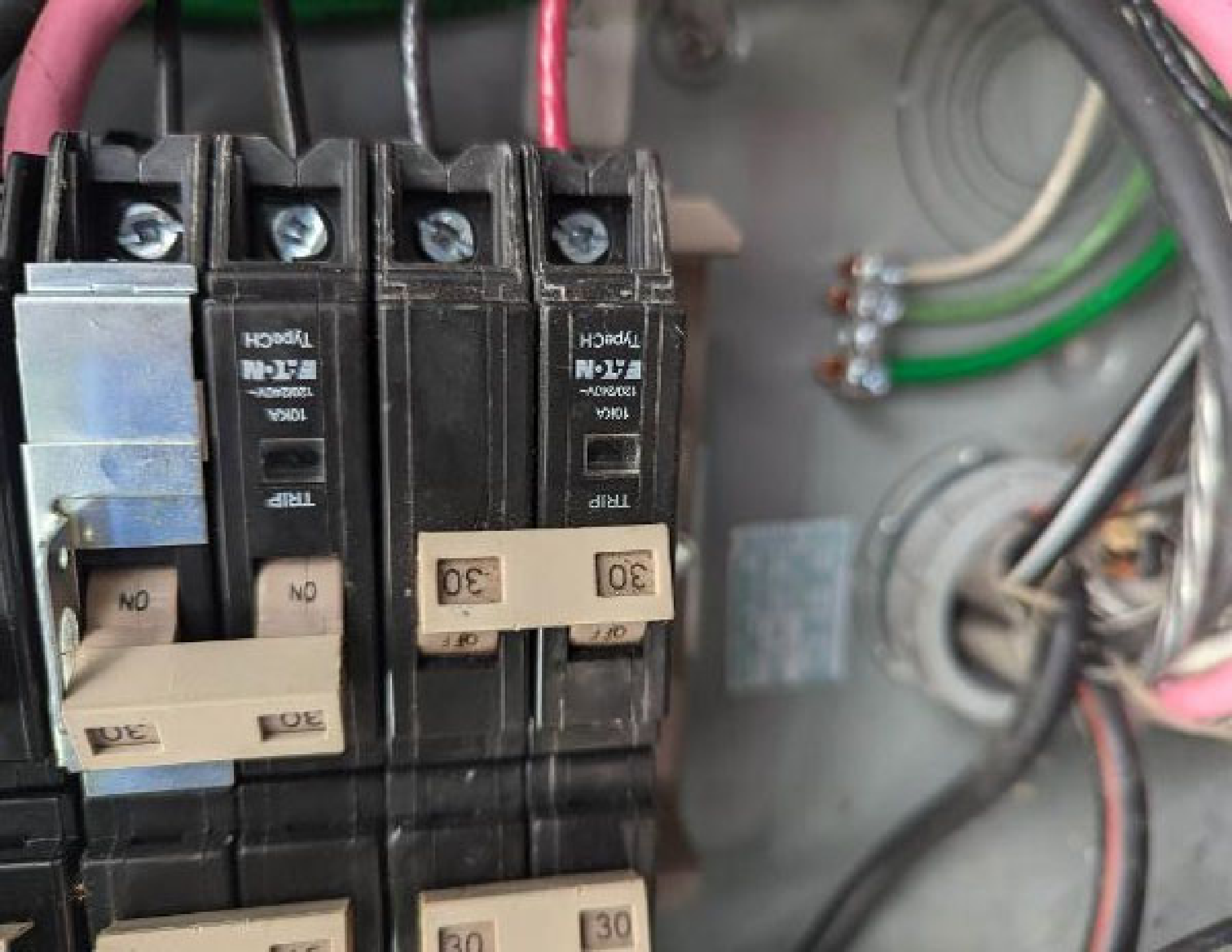
NO TE
 cover
 instant
 instant



401 Columbia Center
Portland, Oregon 97208







E-T-N
120/240V
10KA

E-T-N
120/240V
10KA

TRIP

TRIP

ON

ON

30

30

30

30

30

30





ENPHASE

PHOTOVOLTAIC SYSTEM
AC COMBINER PANEL



WARNING

**AUTHORIZED
PERSONNEL ONLY**

DO NOT ADD LOADS

NO DC WIRES PRESENT
RAPID SHUTDOWNS
TEST NOT REQUIRED

WARNING

DUAL POWER SUPPLY

SOURCES: UTILITY GRID AND
PV SOLAR ELECTRIC SYSTEM

NOTICE

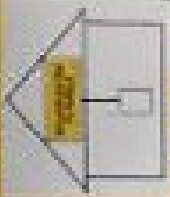
IN CASE OF EMERGENCY,
PLEASE CONTACT:

BLUE RAVEN SOLAR
(800) 377-4482



**SOLAR PV SYSTEM EQUIPPED
WITH RAPID SHUTDOWN**

TURN RAPID SHUTDOWN
SWITCH TO THE
"OFF" POSITION TO
SHUT DOWN PV SYSTEM
AND REMOVE
SHOCK HAZARD
IN THE AREA



CAUTION

REMOVABLE BATTERY PACK
POWER TO THE BATTERY PACK
MAY BE ON EVEN IF BATTERY
PACK IS REMOVED. ALWAYS
USE PROPER SAFETY PROCEDURES
WHEN WORKING ON PV SYSTEM.

Blue Raven Solar
800-377-4482





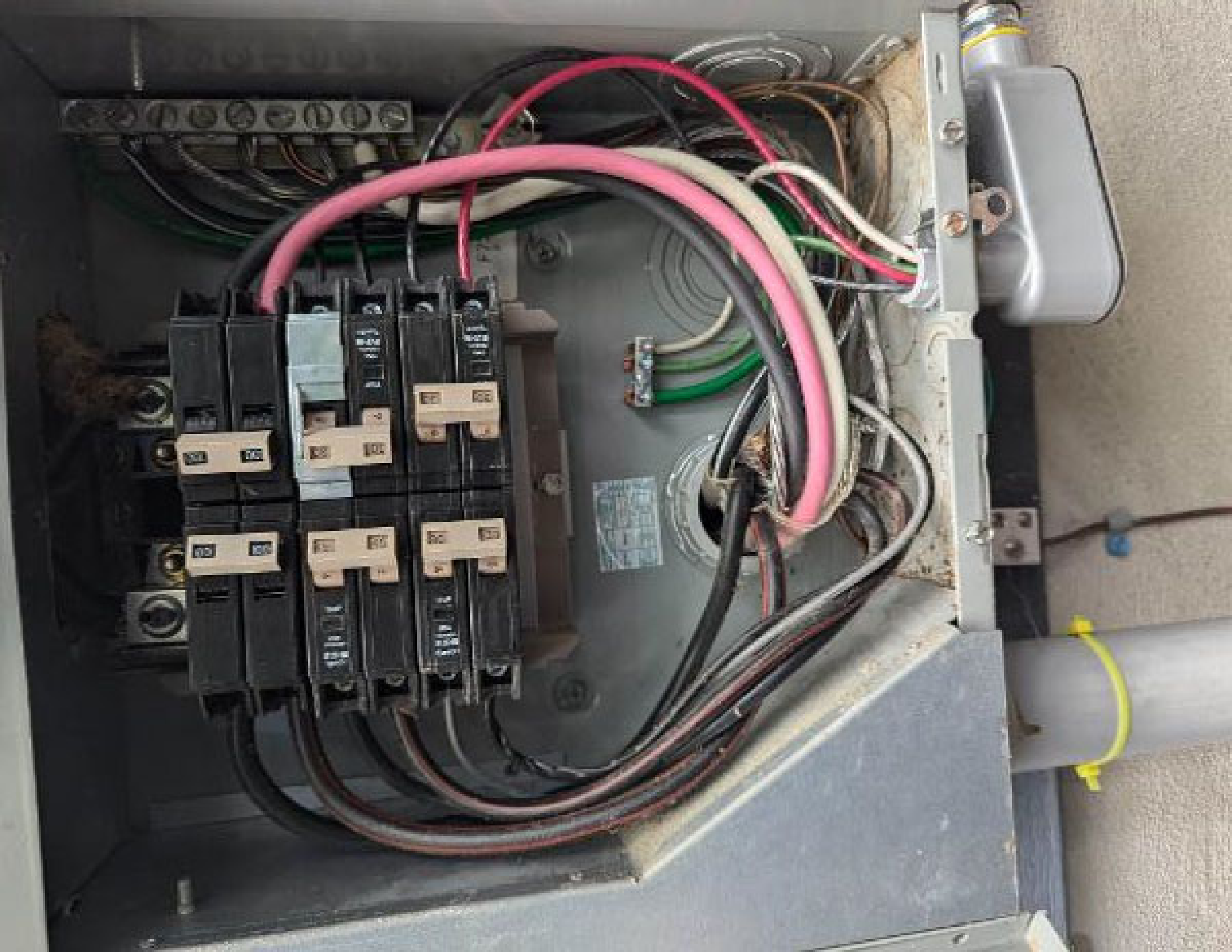


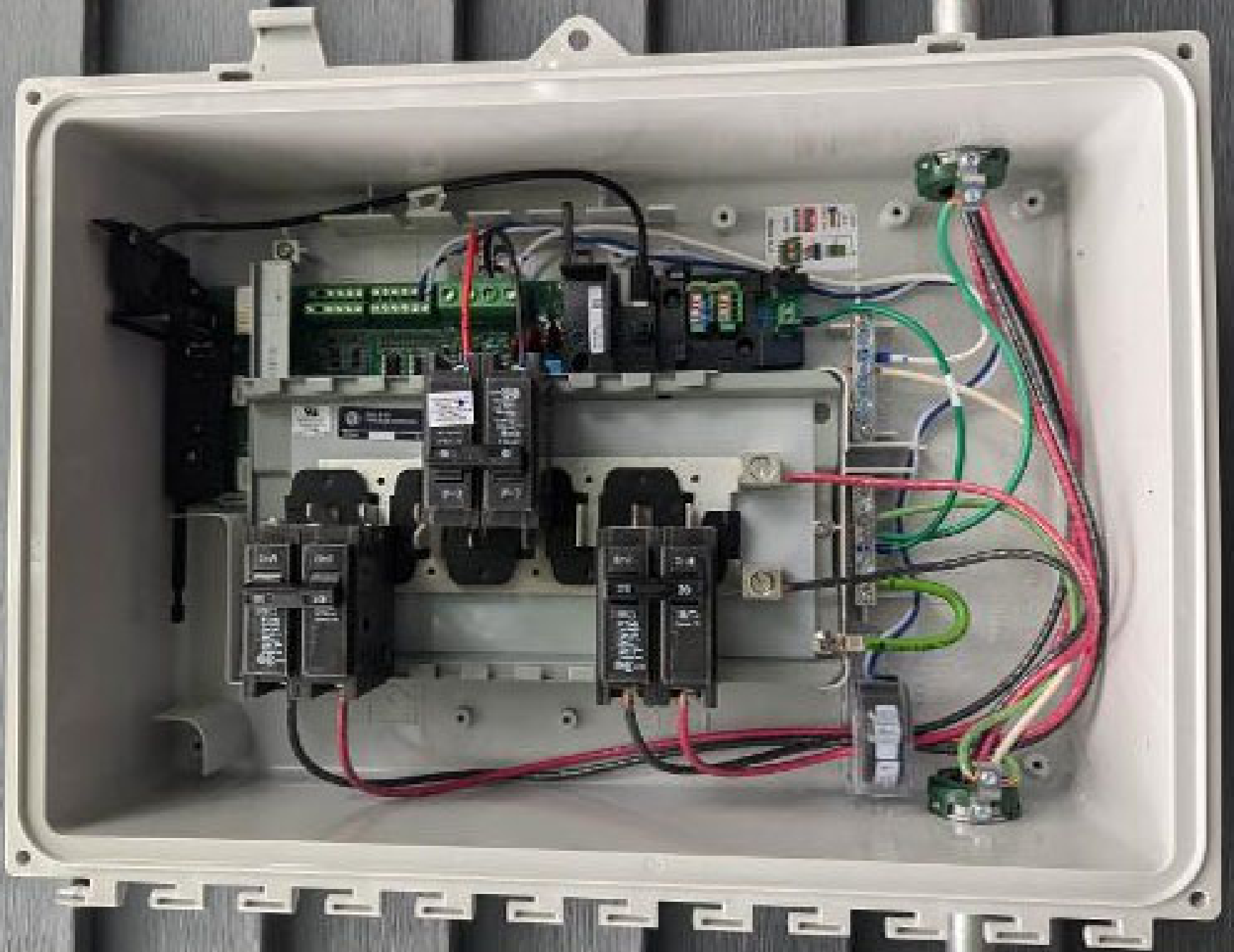


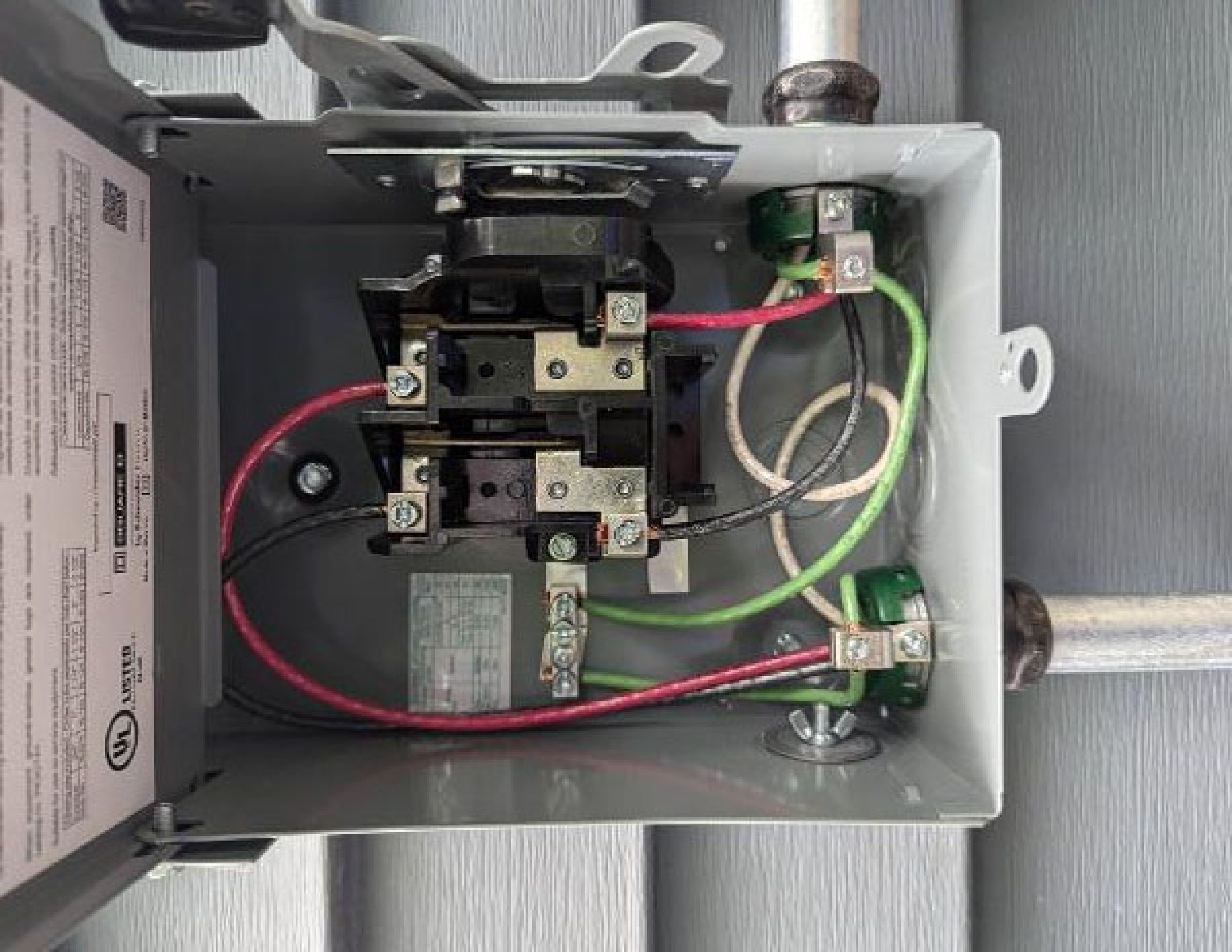








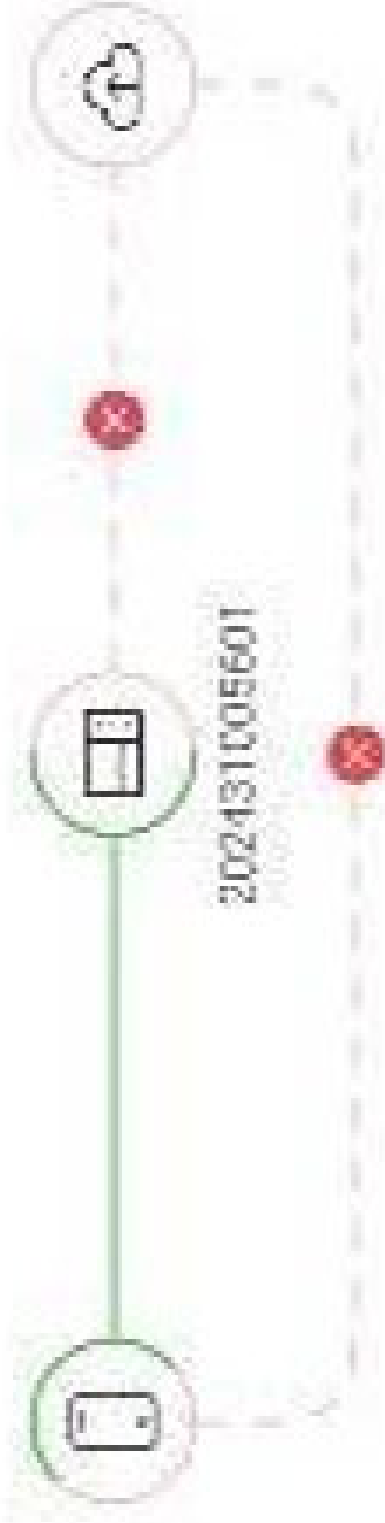




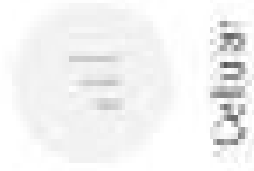
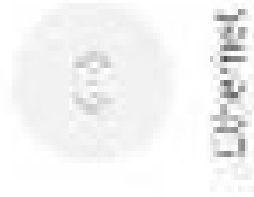
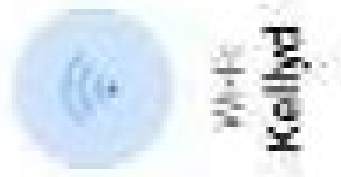
WA **WESTWARD**
ELECTRICAL

100 **1000** **10000**
100 1000 10000

WARNING: This equipment is intended for use in a dry location only. Do not use in a wet or damp location. Do not use in a hazardous (classified) location. Do not use in a Class I, Division 2, or Class II, Division 1, or Class III, Division 1, or Class III, Division 2, or Class III, Division 3, or Class III, Division 4, or Class III, Division 5, or Class III, Division 6, or Class III, Division 7, or Class III, Division 8, or Class III, Division 9, or Class III, Division 10, or Class III, Division 11, or Class III, Division 12, or Class III, Division 13, or Class III, Division 14, or Class III, Division 15, or Class III, Division 16, or Class III, Division 17, or Class III, Division 18, or Class III, Division 19, or Class III, Division 20, or Class III, Division 21, or Class III, Division 22, or Class III, Division 23, or Class III, Division 24, or Class III, Division 25, or Class III, Division 26, or Class III, Division 27, or Class III, Division 28, or Class III, Division 29, or Class III, Division 30, or Class III, Division 31, or Class III, Division 32, or Class III, Division 33, or Class III, Division 34, or Class III, Division 35, or Class III, Division 36, or Class III, Division 37, or Class III, Division 38, or Class III, Division 39, or Class III, Division 40, or Class III, Division 41, or Class III, Division 42, or Class III, Division 43, or Class III, Division 44, or Class III, Division 45, or Class III, Division 46, or Class III, Division 47, or Class III, Division 48, or Class III, Division 49, or Class III, Division 50, or Class III, Division 51, or Class III, Division 52, or Class III, Division 53, or Class III, Division 54, or Class III, Division 55, or Class III, Division 56, or Class III, Division 57, or Class III, Division 58, or Class III, Division 59, or Class III, Division 60, or Class III, Division 61, or Class III, Division 62, or Class III, Division 63, or Class III, Division 64, or Class III, Division 65, or Class III, Division 66, or Class III, Division 67, or Class III, Division 68, or Class III, Division 69, or Class III, Division 70, or Class III, Division 71, or Class III, Division 72, or Class III, Division 73, or Class III, Division 74, or Class III, Division 75, or Class III, Division 76, or Class III, Division 77, or Class III, Division 78, or Class III, Division 79, or Class III, Division 80, or Class III, Division 81, or Class III, Division 82, or Class III, Division 83, or Class III, Division 84, or Class III, Division 85, or Class III, Division 86, or Class III, Division 87, or Class III, Division 88, or Class III, Division 89, or Class III, Division 90, or Class III, Division 91, or Class III, Division 92, or Class III, Division 93, or Class III, Division 94, or Class III, Division 95, or Class III, Division 96, or Class III, Division 97, or Class III, Division 98, or Class III, Division 99, or Class III, Division 100.

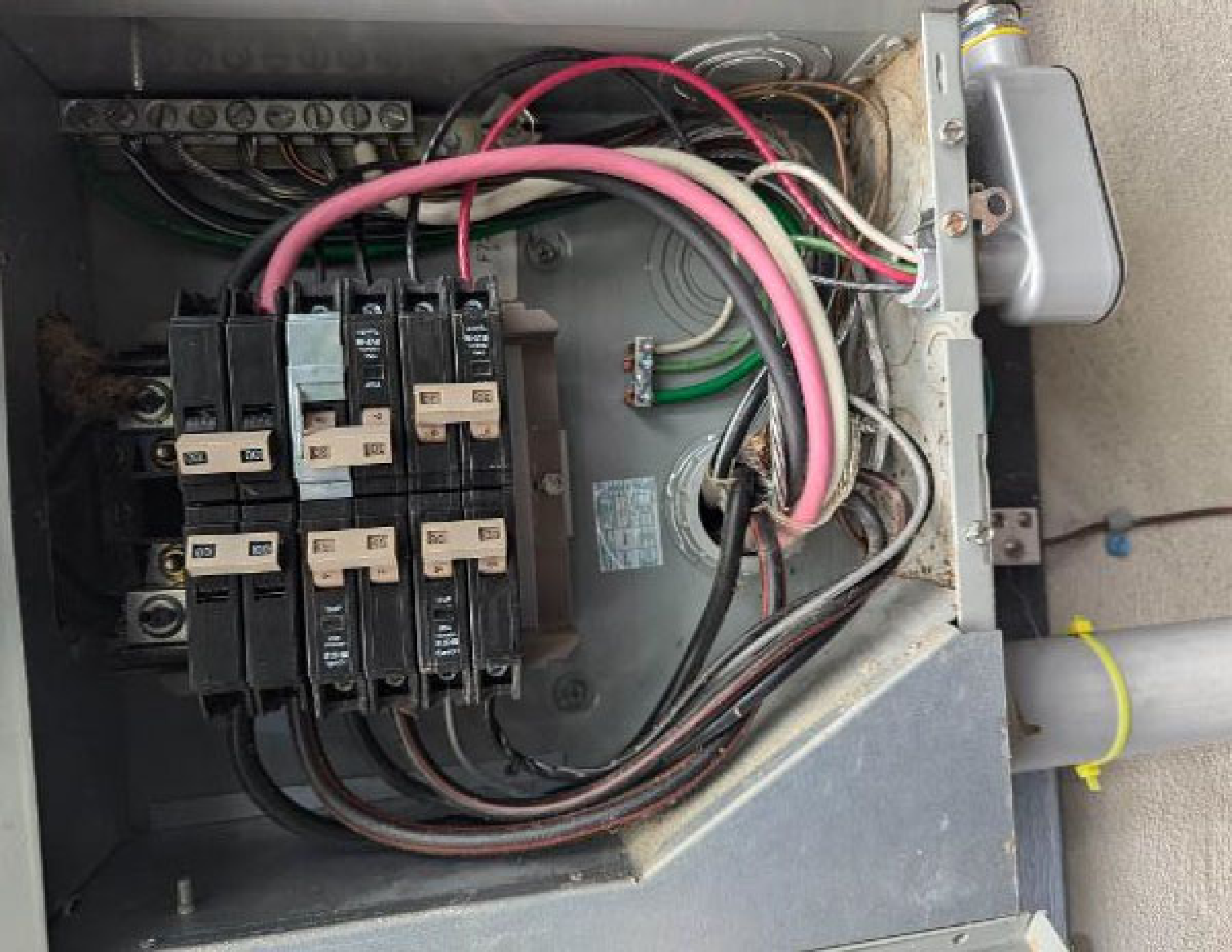


Connect gateway to Enphase cloud via:



Disconnect from gateway



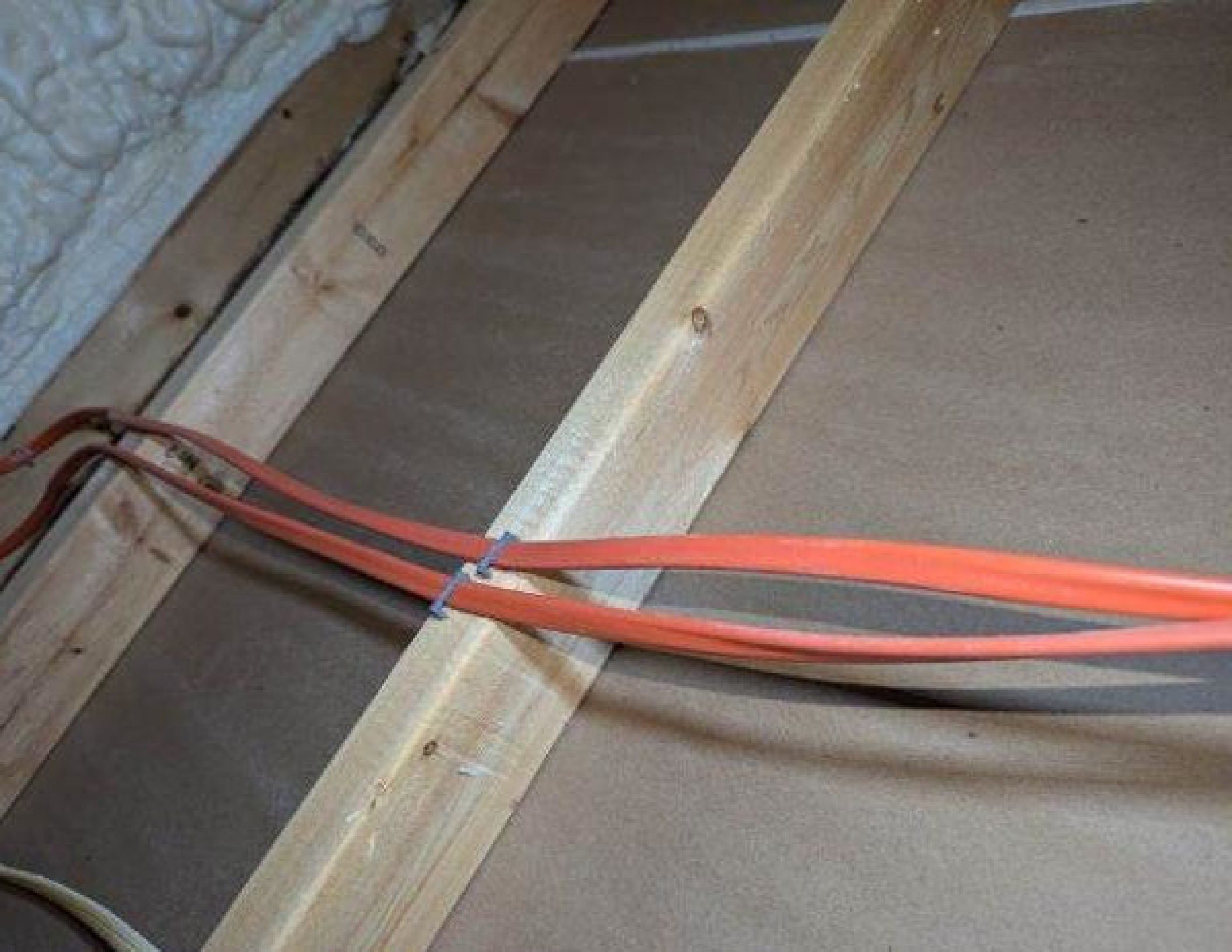














30MM SPLICE 6.5" SFM

UNIRAC

BETTER SOLAR STARTS HERE



253010U



PACKAGE QTY: 10 EA.
WU/PC#: 0048098-00
MANUFACTURE DATE: 03/2004
FACTORY CODE: 028A



California Proposition 65, WARNING: Cancer &
Reproductive Harm www.P65Warnings.ca.gov

10001.com (United States)



817







IQ8X

Grid Support Utility Interactive Inverter
Multimode Inverter

For more information, please visit enphase.com/inverters

Original Power Factor: 0.985 @ 1
 Selected Power Factor: 0.995
 DC input range: 20-70.0V
 Max. input electrical current: 11.4
 Max. input mechanical current: 10.4
 AC input voltage: 120V/208V
 AC output current: 1.68A/1.70A
 AC output frequency: 60 Hz
 AC inrush power (over 300ms): 100VA/200VA
 Operating temperature: -40 to 60°C
 Approval: UL1741, IEEE 1547, IEC 61683-1
 Installation: See Installation Instructions
 EMC: EN50538, EN50561, EN50664, EN50671
 UL: 1993, 1994, 603, 605, 609, 610



This device complies with part 15 of the FCC Rules. Operation is subject to the following two conditions: (1) This device may not cause harmful interference. (2) This device must accept any interference received, including interference that may cause undesired operation.



CAUTION: RISK OF SHOCK. WARRANTY LABEL COVER REMOVED. NO USER SERVICEABLE PARTS INSIDE. REFER SERVING TO QUALIFIED SERVICE PERSONNEL.

WARNING: This device should have all of the covers of this product properly installed. The covers of this device may be energized. An energized cover could cause a fire or electric shock. Do not touch the cover until the cover is properly grounded. To reduce the risk of electric shock, do not touch the back of the device.

ATTENTION: RISK OF ELECTRIC SHOCK. TO REDUCE THE RISK OF ELECTRIC SHOCK, DO NOT REMOVE THE COVER. TO REDUCE THE RISK OF ELECTRIC SHOCK, DO NOT TOUCH THE BACK OF THE DEVICE. TO REDUCE THE RISK OF ELECTRIC SHOCK, DO NOT REMOVE THE COVER. TO REDUCE THE RISK OF ELECTRIC SHOCK, DO NOT TOUCH THE BACK OF THE DEVICE.



Made in the USA
from imported parts

