



462

11/19/2019  
11:00 AM  
11/19/2019  
11:00 AM



**Jinko Solar**  
Building Your Trust in Solar

Jinko Solar Co., Ltd.  
No. 1, Yingbin Road, Economic Development Zone,  
Shangrao City, 334100, Jiangxi, P.R. China  
www.jinkosolar.com

**PHOTOVOLTAIC MODULE**  
Modules assembled in the USA from solar cells made in Vietnam

Solar Module Type	: JKM390M-72HBL-V
Maximum Power (Pmax)	390W ±3%
Power Measurement Tolerance	±3%
Maximum Power Voltage (Vmp)	39.64V
Maximum Power Current (Imp)	9.84A
Open Circuit Voltage (Voc)	48.60V ±3%
Short Circuit Current (Isc)	10.46A ±4%
Maximum System Voltage	1500VDC
Maximum Overcurrent Protection Rating	20A
Power Sorting	0~+3%
Protection Class	II
Fire Class	Type 1 (UL61730)/Class C (IEC61730)
Weight	22.5(kg)
Dimension	2008×1002×40(mm)
STC	1000W/m <sup>2</sup> , AM1.5, 25°C
Current Sorting	I1

**UL US LISTED**  
PHOTOVOLTAIC MODULE UNDER THE GREEN CHINA PROGRAM

**CE**

Fire Type: See installation instructions for installation requirement to achieve a specified system fire class rating with this product.  
For field connections, use 12 AWG Cu wire only, insulated for a minimum of 90°C.

**WARNING**  
ONLY qualified personnel should install or perform maintenance work on these modules  
**BE AWARE** of dangerous high DC voltage when connecting modules  
**DO NOT** damage or scratch the rear surface of the module  
**SEE** module literature for appropriate mating connectors  
**DO NOT** disconnect the cables or connectors under load

**AVERTISSEMENT**  
SEUL les professionnels peuvent installer et maintenir les éléments  
**PRENDRE GARDE** de la haute tension continue lorsque les éléments sont connectés  
**IL EST interdit** d'endommager ou d'érayer l'envers des éléments  
**VOIR** les infos modules pour les connecteurs de raccordement appropriés  
**Ne déconnectez pas** le câble ou le connecteur sous charge  
Pour les raccords sur le terrain, n'utiliser un câble isolé en cuivre de 12 AWG avec un minimum de 90°C.



0188BDF11-93



01889F9CB-65



0188A5524-1B



0188A299B-66



0188BDEE8-69



0188A7A11-2D



0188A34EC-C2



0188A5526-1D



0188A72BC-D0



0188A47A7-90



0188A357E-55



0188E14B-CF



017A93580-75



0189A3198-6B



0188A4C4F-3D



0188BDF10-92



0188A495D-48



7508DD0E-68







































PHOTOVOLTAIC POWER SOURCE

2 3 4 5 6 7 8 9 10 11 12 13 14 15 16 17 18 19 20 21 22 23 24 25 26 27 28















Do Not Remove  
18BA4310-48  
SolarEdge  
Power  
WARNING: THIS DEVICE CONTAINS HIGH VOLTAGE. DO NOT TOUCH THE TERMINALS OR WIRING.  
ARTISSEMENT  
DANGER: THIS DEVICE CONTAINS HIGH VOLTAGE. DO NOT TOUCH THE TERMINALS OR WIRING.  
ATTENTION: CE DISPOSITIF CONTIENDE HAUTE TENSION. NE TOUCHEZ PAS LES TERMINAUX NI LE CÂBLAGE.  
AVVERTENZA: QUESTO DISPOSITIVO CONTIENE ALTA TENSIONE. NON TOCCARE I TERMINALI O I CAVI.  
CAUTION: THIS DEVICE CONTAINS HIGH VOLTAGE. DO NOT TOUCH THE TERMINALS OR WIRING.

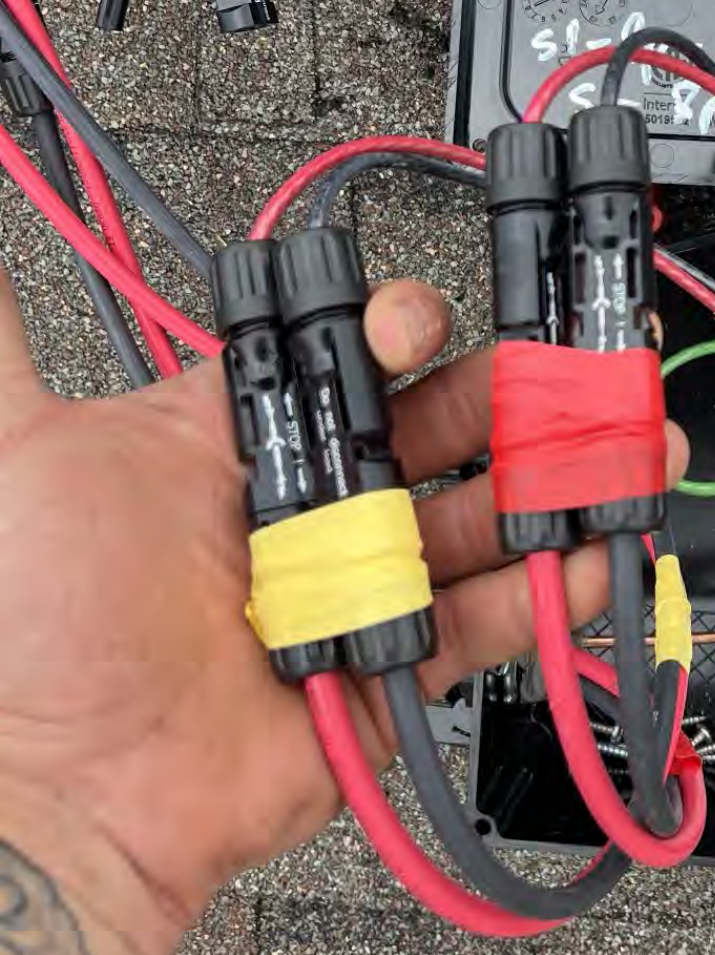
Sandra C pinto  
462 blue aspen Dr  
Fogarty - verina - nc

MAX DC RATING: 1000 VDC / 100 AMP  
MAX AC RATING: 120 VAC / 15 AMP  
ALLOWABLE WWR: 100% WWR  
AMBIENT OPERATING TEMP: 50°C / 122°F

**WARNING!**  
RISK OF ELECTRICAL SHOCK OR AC VOLTAGE SOURCES ARE CONNECTED INSIDE THIS EQUIPMENT. EACH CIRCUIT MUST BE INDIVIDUALLY DISCONNECTED BEFORE SERVICING AND WHEN THE PHOTOVOLTAIC ARRAY IS EXPOSED TO LIGHT IT SUPPLIES VOLTAGE TO THIS EQUIPMENT.

REFER TO INSTALLATION MANUAL FOR WIRING VOLUME AND DIMENSIONS.  
TORQUE FOR ALL SCREWS & BOLTS: 1.5 Nm (13.4 INCH LBS) IN ACCORDANCE WITH STANDARD 1744

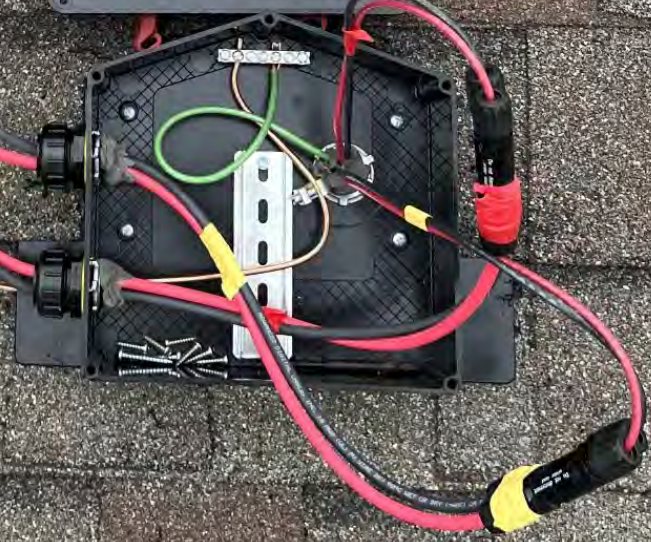
step red  
step yellow





Sandra C pinto  
462 blue aspen Dr  
Fogarty - verona - nc  
WASHINGT

S1 - 4p - red  
S2 - 8p - yellow





Handwritten mark resembling the number '2' on the white surface of the satellite dish.

Manufacturer's label on the satellite dish, containing technical specifications and safety information.





Small white label with a barcode on the satellite dish.

Handwritten scribbles on the white surface of the satellite dish.





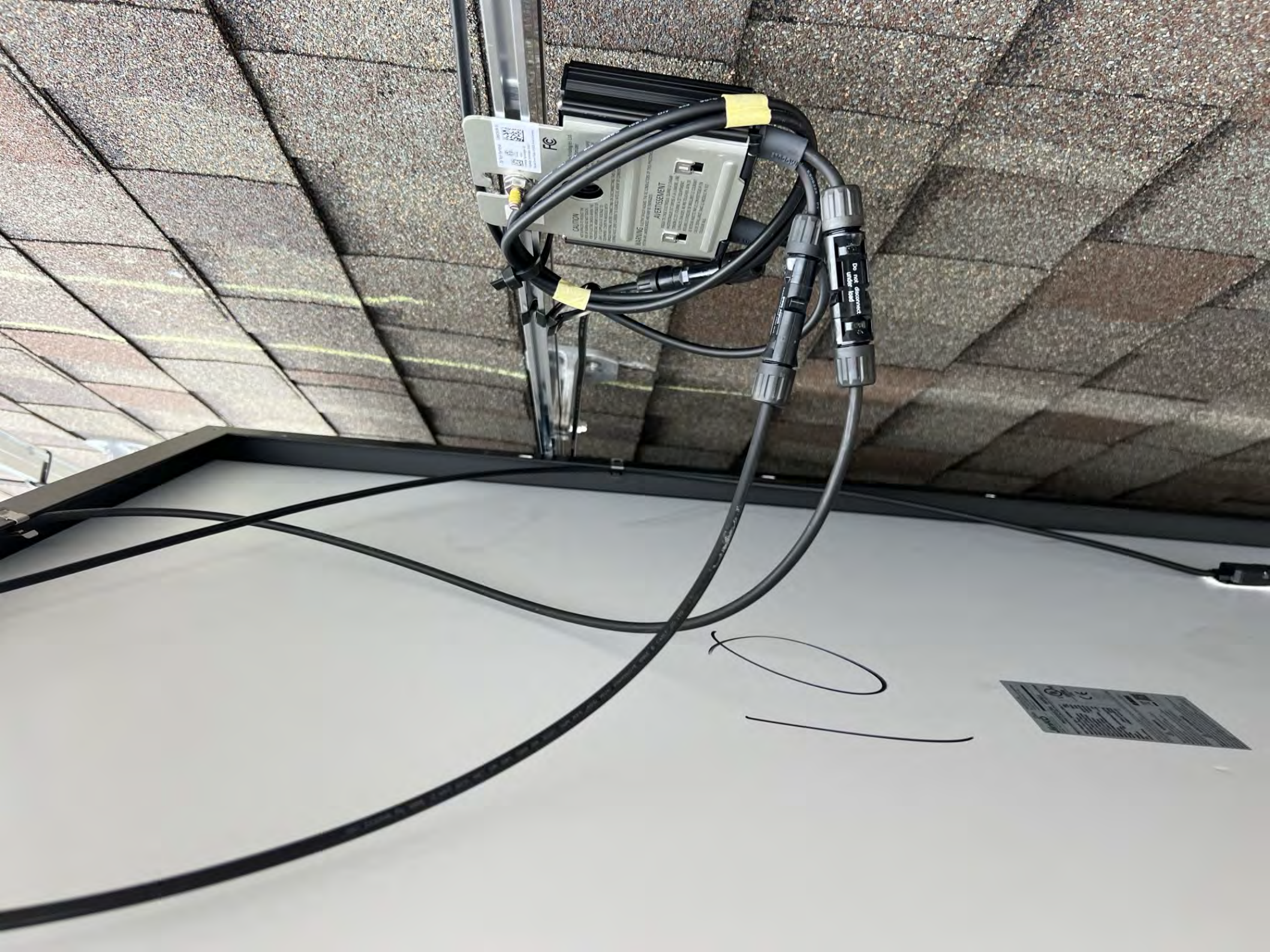


Handwritten signature or mark on the white wall.

Manufacturer's label on the white wall, partially visible.

Manufacturer's label on the inverter, partially visible.





QR Code  
CE  
CAUTION  
ATTENTION  
WARNING

Caution: Hot Surfaces

Technical specifications and safety information label on the white surface.

Handwritten markings on the white surface.







**CAUTION**  
Do not touch the solar panel. The solar panel is hot and may cause burns. Do not touch the solar panel when it is hot. Do not touch the solar panel when it is wet. Do not touch the solar panel when it is dirty. Do not touch the solar panel when it is covered in snow. Do not touch the solar panel when it is covered in ice. Do not touch the solar panel when it is covered in rain. Do not touch the solar panel when it is covered in hail. Do not touch the solar panel when it is covered in sleet. Do not touch the solar panel when it is covered in wind-blown debris. Do not touch the solar panel when it is covered in any other hazardous material.

**WARNING** Do not touch the solar panel. The solar panel is hot and may cause burns. Do not touch the solar panel when it is hot. Do not touch the solar panel when it is wet. Do not touch the solar panel when it is dirty. Do not touch the solar panel when it is covered in snow. Do not touch the solar panel when it is covered in ice. Do not touch the solar panel when it is covered in rain. Do not touch the solar panel when it is covered in hail. Do not touch the solar panel when it is covered in sleet. Do not touch the solar panel when it is covered in wind-blown debris. Do not touch the solar panel when it is covered in any other hazardous material.

**AVERTISSEMENT**  
Ne touchez pas le panneau solaire. Le panneau solaire est chaud et peut causer des brûlures. Ne touchez pas le panneau solaire quand il est chaud. Ne touchez pas le panneau solaire quand il est mouillé. Ne touchez pas le panneau solaire quand il est sale. Ne touchez pas le panneau solaire quand il est couvert de neige. Ne touchez pas le panneau solaire quand il est couvert de glace. Ne touchez pas le panneau solaire quand il est couvert de pluie. Ne touchez pas le panneau solaire quand il est couvert de grêle. Ne touchez pas le panneau solaire quand il est couvert de neige fondue. Ne touchez pas le panneau solaire quand il est couvert de débris emportés par le vent. Ne touchez pas le panneau solaire quand il est couvert de tout autre matériau dangereux.

Panel label with technical specifications and safety information.















Small white label on the wall with illegible text and a logo.

ALERTISSIMENT  
ALERTISSIMENT  
ALERTISSIMENT

ALERTISSIMENT  
ALERTISSIMENT  
ALERTISSIMENT

(855) 997-1213  
TOPTIERSOLARSOLUTIONS.COM

(855) 997-1213  
TOPTIERSOLARSOLUTIONS.COM





(855) 997-1213  
TOPTIERSOLARSOLUTIONS.COM

13

12

11

10

9





17

Small illegible label on panel 17

16

Small illegible label on panel 16



(855) 997-1213  
TOPTIERSOLARSOLUTIONS.COM

17

16

15

14

13

12

11

10

9

8













































© 2014 SunPower Corporation  
All rights reserved. SunPower Corporation  
16300 Central Expressway, Fremont, CA 94538  
www.sunpowercorp.com



Model: S170-360W  
Part Number: S170-360W  
Serial Number: S170-360W

WARNING: This device contains lithium-ion batteries. Do not disassemble, puncture, or expose to fire. If a fire occurs, use a Class D fire extinguisher.

CAUTION: Do not touch the solar cells. They are fragile and can be damaged by physical contact.





Do Not Remove  
18846747-00  
SolarEdge Technologies Ltd  
SolarEdge Technologies GmbH  
Werner-Heisenberg-Str. 10  
85574 Munich, Germany



SolarEdge Technologies Ltd  
Power Optimizer  
SolarEdge Technologies GmbH  
Werner-Heisenberg-Str. 10  
85574 Munich, Germany

**CAUTION**

WET SURFACES TO REDUCE THE RISK OF SLIPNS DO NOT TOUCH. RISK OF ELECTRIC SHOCK: WHEN THE PHOTOVOLTAIC ARRAY IS EXPOSED TO LIGHT IT SUPPLIES A DC VOLTAGE TO EQUIPMENT. COVER PV MODULE WITH OPAC MATERIAL BEFORE CONNECTING OR DISCONNECTING THIS OPTIMIZER. CURRENT IS SOURCED INTO DC ARRAY BY CONVERTER.

**WARNING** ELECTRIC SHOCK HAZARD: THE DC CONDUCTORS OF THIS PHOTOVOLTAIC SYSTEM ARE UNGROUNDED AND MAY BE ENERGIZED.

**AVERTISSEMENT**

MOUILLER SURFACES POUR RÉDUIRE LE RISQUE DE CHUTE ÉLECTRIQUE - NE PAS TOUCHER. RISQUE DE CHOC ÉLECTRIQUE: QUAND LE CHAMP PHOTOVOLTAÏQUE EST EXPOSÉ À LA LUMIÈRE, UNE TENSION CC EST FOURNIE À CET ÉQUIPEMENT. COUVER LES MODULES PV AVEC UN MATÉRIEL OPAC AVANT DE RACCORDER OU DÉRACCORDER CE CONVERTISSEUR. LE COURANT EST ALIMENTÉ DANS LE CHAMP PV PAR LE CONVERTISSEUR.



Do Not Remove

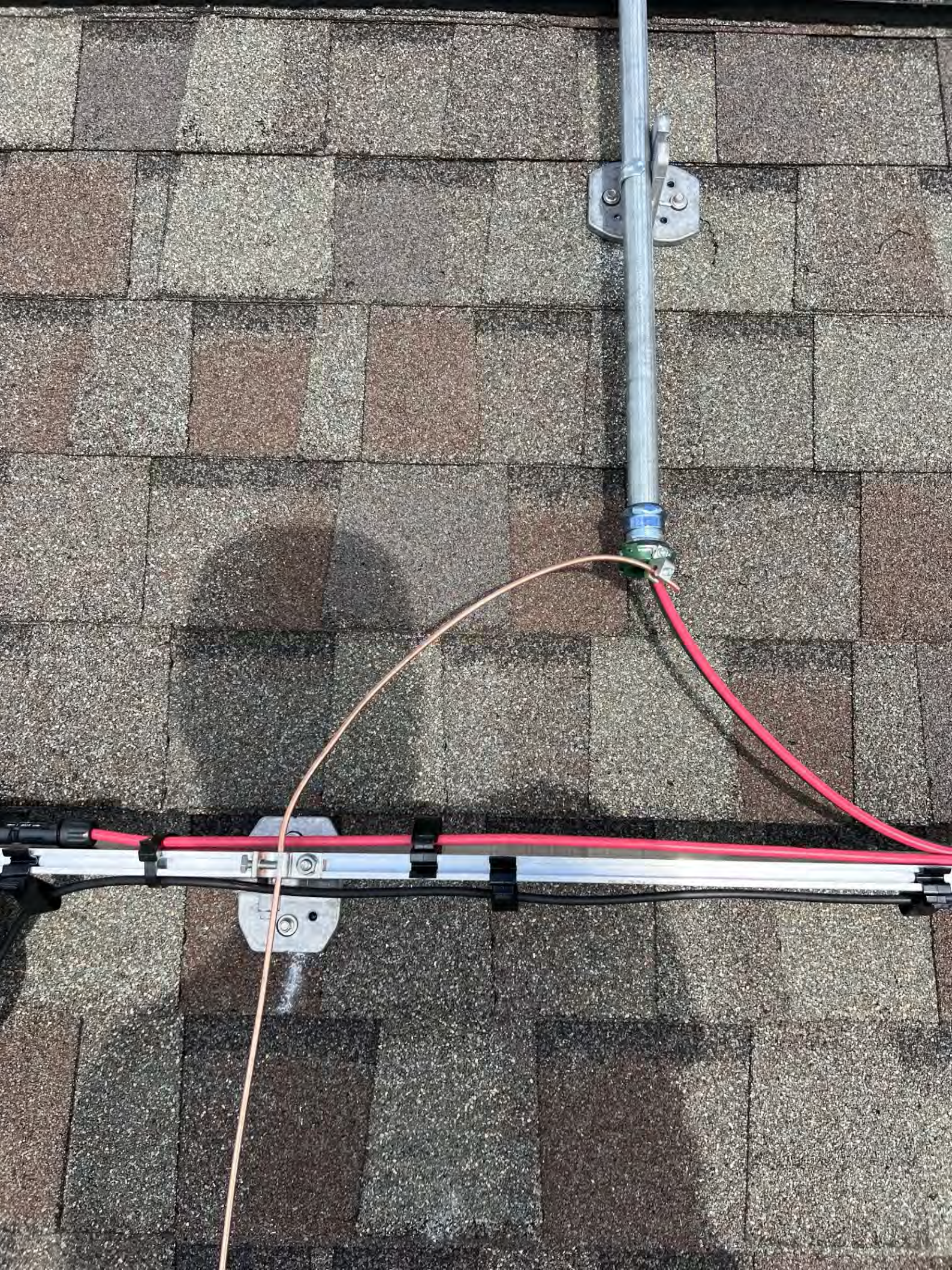
FC

CAUTION

WARNING

AVERTISSEMENT

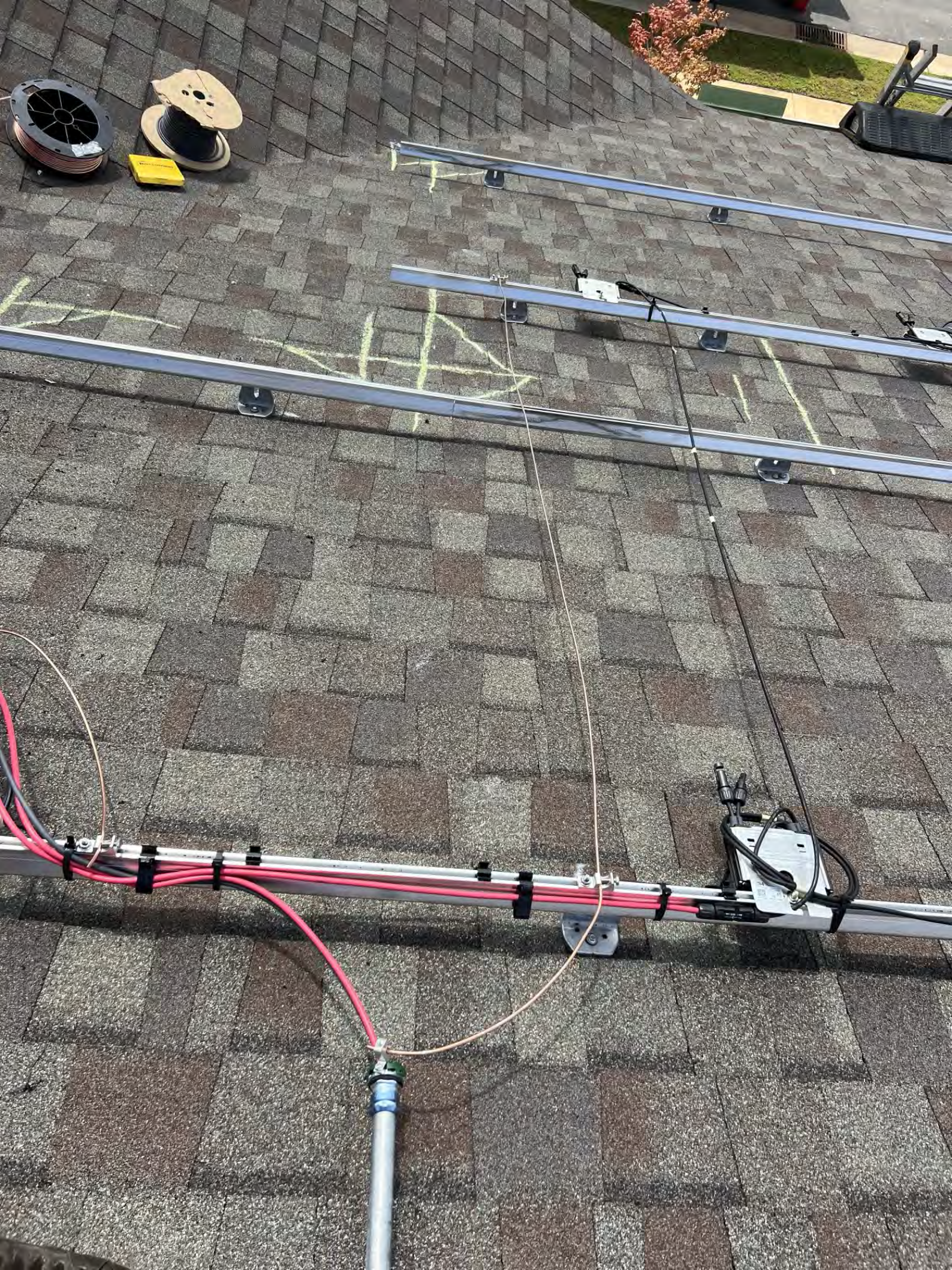


















(UL)

E508326

PV

WIRE

12AWG

105°C

DRY

90°C

WET

1000V

OR

2000V

SUN

RES

-40°C

VW-1

DCM-GME



ADVANCED DIGITAL CABLE, INC.  
18 AWG (11) PU WIRE 2KV 90°C MET DR DE  
100% RECYCLED



USE 200 90°C WET OR DRY (-40°C) OR RHM-2 OR USE-2 600V DIRECT BURIAL EPR11 98 E20



NET (-40°C) XLPE SUN RES DIRECT BURIAL RHH/RHW-2 2000U ROHS 12/08/2023 MADE IN USA  
GROUP (5.2MM<sup>2</sup>) CU (UL) PU WIRE 2000U 90°C DRY OR WET (-40°C) XLPE SUN RES DIRE

Do not disconnect  
under load











PHOTOVOLTAIC POWER SOURCE











462



**CAUTION**  
SURFACES TO REDUCE THE RISK OF BURNS DO NOT TOUCH OF ELECTRIC SHOCK WHEN THE PHOTOVOLTAIC ARRAY IS EXPOSED TO SUNLIGHT. SUPPLY A DC VOLTAGE TO PREVENT COVER PV MODULE WITH THE MATERIAL BEFORE CONNECTING OR DISCONNECTING THIS OPTIMIZER. IN THE EVENT OF A FAULT, ZERO CURRENT IS SOURCED INTO DC ARRAY BY CONVERTER.

**WARNING** ELECTRIC SHOCK HAZARD. THE DC CONDUCTORS OF THIS PHOTOVOLTAIC SYSTEM ARE UNGROUNDING AND MAY BE ENERGIZED.

**AVERTISSEMENT**  
RISQUE DE BRÛLE ÉLECTRIQUE: QUAND LE CHAMP PHOTOVOLTAÏQUE EST EXPOSÉ À LA LUMIÈRE, UNE TENSION CC EST FOURNIE À CET ÉQUIPEMENT. SURFACES CHAUDES NE PAS TOUCHER. AFIN DE RÉDUIRE LES RISQUES DE BRÛLURES LE COURANT DE RETOUR INJECTÉ PAR LE CONVERTISSEUR EN CAS DE DÉFAILLANCE DANS LE MODULE PV EST TOUJOURS NUL.

Do Not Ground  
L'Équipement  
Ne Pas  
Raccorder



0188A4CF-3D

Do Not Remove 188A4CF-3D

SolarEdge Technologies Ltd.  
Werner-Eckert-Strasse 6/81829 Munich/Germany



**CAUTION**  
HOT SURFACES-TO REDUCE THE RISK OF BURNS-DO NOT TOUCH. RISK OF ELECTRIC SHOCK-WHEN THE PHOTOVOLTAIC ARRAY IS EXPOSED TO LIGHT, IT SUPPLIES A DC VOLTAGE TO EQUIPMENT. COVER PV MODULE WITH OPAQUE MATERIAL BEFORE CONNECTING OR DISCONNECTING THIS OPTIMIZER. DURING FAULT, ZERO CURRENT IS SOURCED INTO DC ARRAY BY CONVERTER.

SolarEdge Technologies Ltd.  
Power Optimizer  
SolarEdge Technologies GmbH/  
Werner-Eckert-Strasse 6/81829  
Munich/Germany

**WARNING** ELECTRIC SHOCK HAZARD. THE DC CONDUCTORS OF THIS PHOTOVOLTAIC SYSTEM ARE UNGROUNDED AND MAY BE ENERGIZED.

**AVERTISSEMENT**

RISQUE DE CHOC ELECTRIQUE. QUAND LE CHAMP PHOTOVOLTAIQUE EST EXPOSE A LA LUMIERE, UNE TENSION CC EST FOURNIE A CET EQUIPEMENT. REDUIRE LES RISQUES DE BRULURES LE COURANT DE RETOUR INJECTE PAR LE CONVERTISSEUR EN CAS DE DEFAILLANCE DANS LE MODULE PV EST TOUJOURS NUL.

Do not disconnect under load







PHOTOVOLTAIC POWER SOURCE















PHOTOVOLTAIC POWER SOURCE

IP TECHSHIELD

IP TECHSHIELD  
PRODUCT DESCRIBED







1472  
Model 1000  
Serial 1000  
1000

**⚡ CAUTION ⚡**  
SOLAR ELECTRIC SYSTEM CONNECTED

CENTRON<sup>®</sup>

9001DBCAAZ  
FCC ID: SK3AM7, IC 844G-AM7, MODEL AM7

02.000000

CL200 240V 3W TYPE C2M 30TA 1.0Kh  
\*ZZZ 405645 H67\* CA 0.5  
FM2S  
60HZ

DUKE ENERGY PROGRESS  
323 546 490

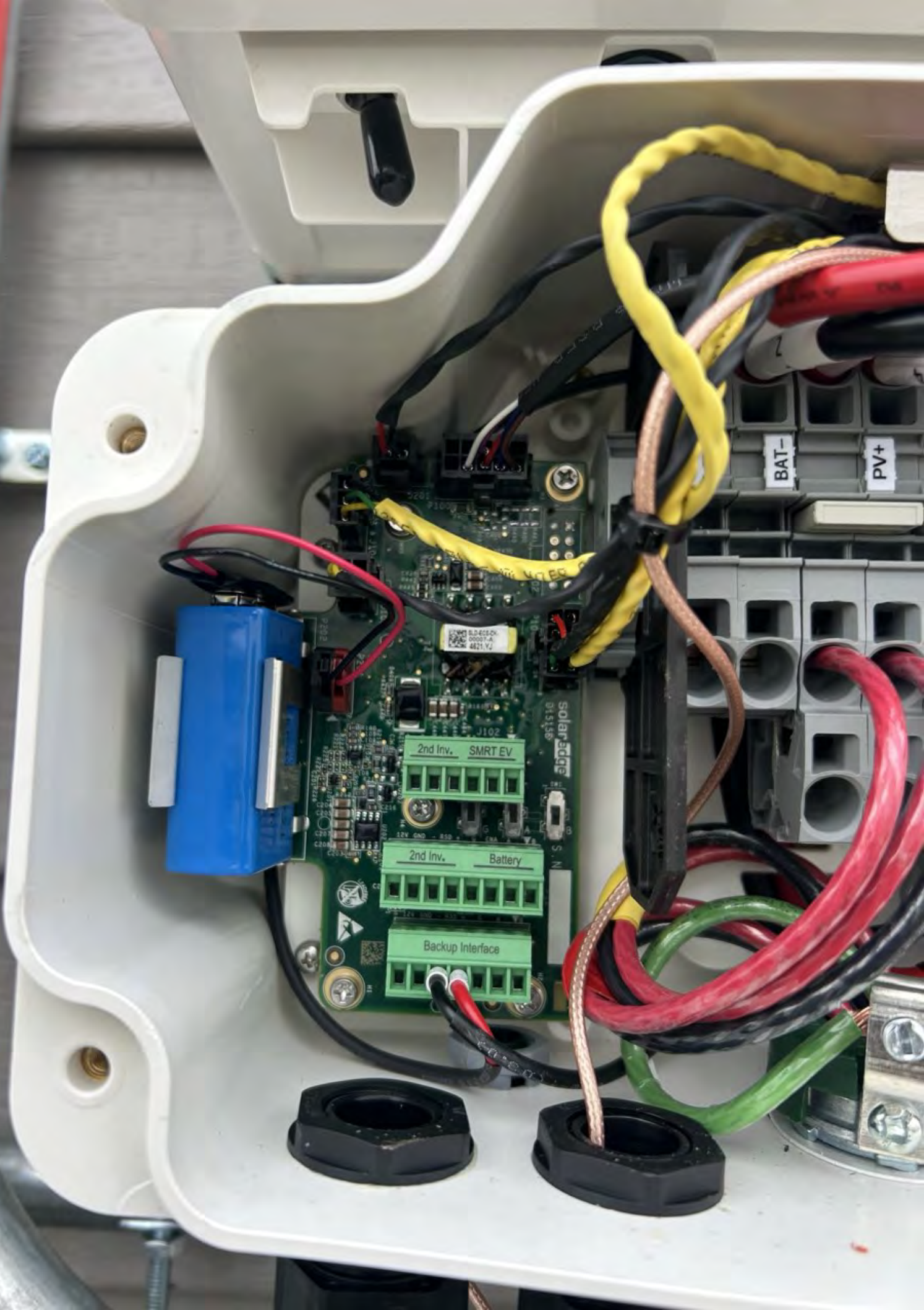
F120529  
OpenWay<sup>®</sup>  
"Hron"  
9/19

**⚠ WARNING**  
DUAL POWER SUPPLY  
SOURCES: UTILITY GRID  
AND PV SOLAR  
ELECTRIC SYSTEM

PHOTOVOLTAIC  
SYSTEM kWh METER

**⚠ WARNING**  
HAZARD OF ELECTRICAL  
SHOCK OR BURN  
DO NOT BREAK SEAL  
CONTACT UTILITY  
FOR SERVICE  
SUNHAM CO. LEBANON, NH 03305

120VOLT/ALC POWER SUPPLY



BAT-

PV+

2nd Inv. SMRT EV

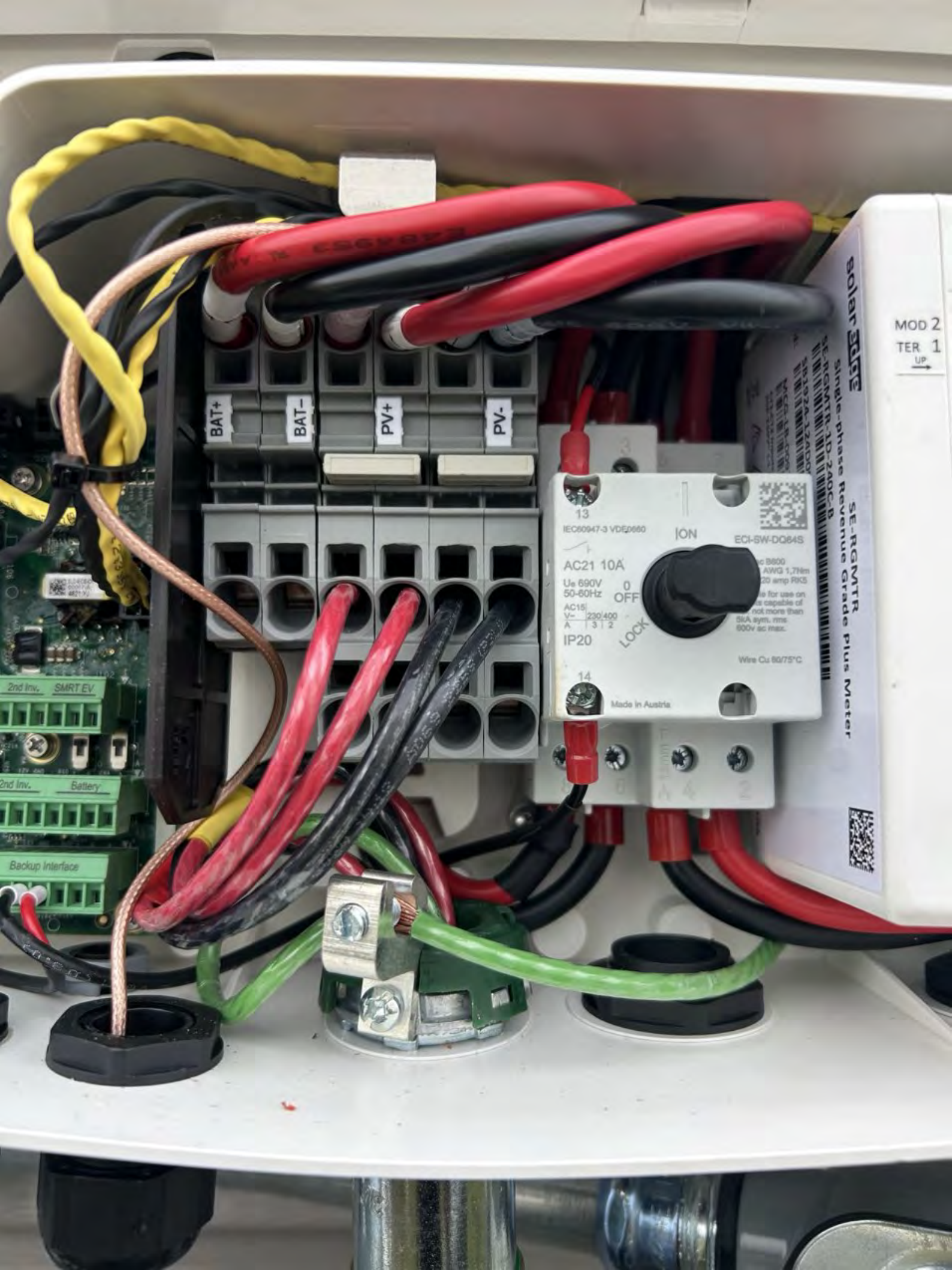
2nd Inv. Battery

Backup Interface

solar edge  
015136

UNIVERSAL  
6.0402-0K  
00007-A  
4821 V





BAT+

BAT-

PV+

PV-

13  
IEC60947-3 VDE0660  
ON  
ECI-SW-DQ64S  
AC21 10A  
U<sub>e</sub> 690V  
50-60Hz  
AC15  
V<sub>e</sub> 230/400  
A 3 1 2  
IP20  
Lock  
14  
Made in Austria

solar edge

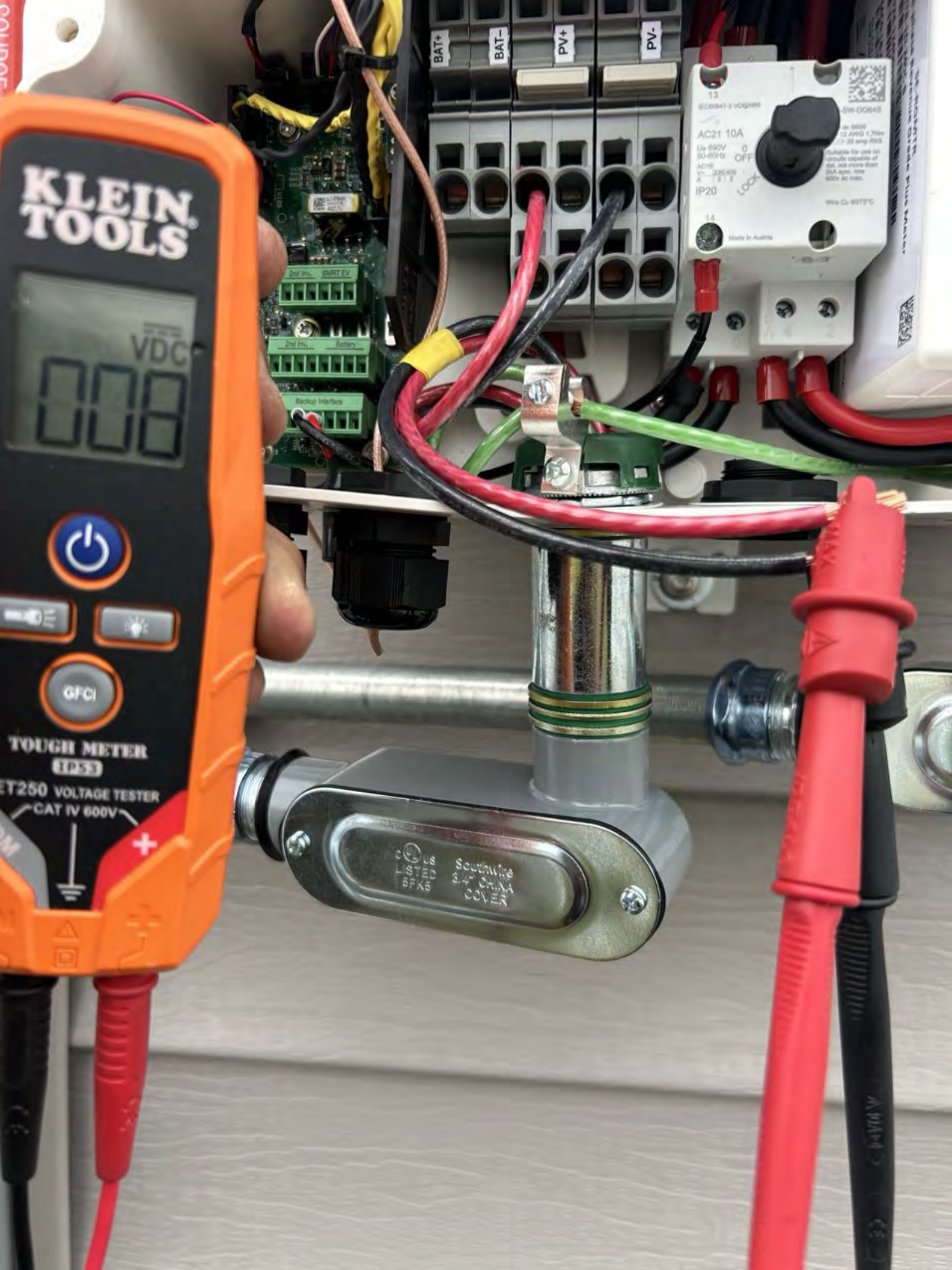
MOD 2  
TER 1  
UP

SE-RGMTR-1D-2A0C-B  
Single-phase Revenue Grade plus Meter

2nd Inv. SMART EV  
2nd Inv. Battery  
Backup Interface







**KLEIN TOOLS**

VDC

0.00

BATT+ BATT- PV+ PV-

AC21 10A  
12 AMP 1.75in  
20 amp RIB  
IP20  
Made in Australia

2nd In. SMART EV  
2nd In. Battery  
Backup Interface

Southwire  
3/4\"/>

TOUGH METER  
ET250 VOLTAGE TESTER  
CAT IV 600V



solar**edge**

Made in USA   
from imported parts

PHOTOVOLTAIC POWER EQUIPMENT



**solar edge**

### StorEdge Connection Unit



Max DC Voltage (PV/Battery)	480 Vdc
Max DC Current (PV)	62 Adc
Max DC Power (PV)	23.2 kWdc
Max Continuous DC Current (Battery)	31 Adc
Max Continuous DC Power (Battery)	11.6 kWdc
Max AC Voltage	264 Vac
AC-Single Phase Frequency	50/60 Hz
Max AC Current (Grid)	48 Aac

For more details refer to the installation guide  
Patent marketing notice: see [WWW.SOLAREEDGE.COM/patent](http://WWW.SOLAREEDGE.COM/patent)

PN: **DCD-1PH-US-P2H-F-1**

SN: **SB2224-191D0C94E-78**

MADE IN U.S.A FROM IMPORTED PARTS



Intertek  
4004590



**solar edge**

### StorEdge Connection Unit



Max AC Current (Smart EV Charger)	40 Aac
Max Continuous Output Power (Smart EV Charger)	9600 W
Max Battery Energy Storage	32 kWh
Number of AC phases	L1, L2, N
Maximum AC short circuit current	74 Aac
Weight	30.2/ 13.7 lbs/kg
Ambient Temperature:	- 40°C ..60°C
Enclosure Rating:	IP65 / Type 4X

For more details refer to the installation guide  
Patent marketing notice: see [WWW.SOLAREEDGE.COM/patent](http://WWW.SOLAREEDGE.COM/patent)  
Use 90°C copper PV Wires only.  
Revenue Grade ANSI C12.20  
PHOTOVOLTAIC RAPID SHUTDOWN SYSTEM

PN: **DCD-1PH-US-P2H-F-1**

SN: **SB2224-191D0C94E-78**

MADE IN U.S.A FROM IMPORTED PARTS



Intertek  
4004590



**solar edge SE5700H - US**  
**Grid Support Utility Interactive Non-Isolated**  
**Photovoltaic Inverter With stand - alone Mode**

Operating Voltage Range  
 Max Input Current  
 Max Continuous Output Power G-0 connected  
 Max Continuous Output Power and Current stand - alone  
 Voltage Min - Nom - Max  
 Max stand - alone Capacity  
 Max Continuous Output Current G-0 Connected  
 Max Output Fault Current  
 Max Utility Backfeed Current  
 Frequency Min - Nom - Max  
 Output Power Factor  
 Max Ambient Temperature  
 Enclosure  
 With integrated ground fault protection per NEC 690.55 (D)  
 Type 1 Photovoltaic Arc - Fault Circuit - Protection  
**ATTENTION:** The maximum operating current of this system may be controlled electronically. Refer to manufacturer's instructions for more information.

270 - 480 Vac	31 A@4	5700W@0.8240V	<input type="checkbox"/> 7.8 KVA 30A
			<input type="checkbox"/> 11.4 KVA 48A
215 - 240 - 264 Vac	30	5600W@0.8240V	
192 - 208 - 228 Vac	11.4 KVA		
34A@0			
74 A@0			
0 A@0			
50.3 - 60.5 - 60.5 Hz	+/- 0.85 - 1		
60 C			
			IP65/NEMA 4X

ETL  
 4004590


Wi-Fi Password:  
 Ig9p5t3y  
 Activation:  
 SEZ 605z Exp 304z x 60h 2nd p4z  
 WiFi MAC:  
 84 DE CS A0 76 F7

PN: SE5700H - USMNUBL15  
 SN: 8B2224 - 07508DD0E - 68



**solar edge**

**PHOTOVOLTAIC RAPID SHUTDOWN SYSTEM**



**solar edge**

ETL LISTED  
 CONFORMS TO  
 ANSI/UL 1741  
 CERTIFIED TO  
 CAN/CSA  
 C22.2 NO 107

Intertek  
 4004590


7508DD0E-68

Grid Support Interactive Inverter - CSA C22.2  
 Max. 9 "9000" or "10000" Interactive Inverter  
 CSA C22.2 No. 107 (ANSI/UL 1741) The enclosed device complies  
 with Part 15 of the FCC Rules. Operation is subject to the following two conditions:  
 1) This device may not cause harmful interference.  
 2) This device must accept any interference received,  
 including radio frequency that may cause undesired operation.  
 For more information visit www.solar-edge.com/products/inverters  
 MADE IN USA from Imported Parts



PHOTOVOLTAIC POWER SOURCE

solar**edge**

Made in USA   
from imported parts

DC DISCONNECT

ON

OFF



**DANGER**  
**DO NOT OPERATE**  
THIS LOCK/TAG MAY ONLY BE REMOVED BY:  
NAME: **TOP TIER**  
DEPT.:  
EXPECTED COMPLETION:  
www.sociform.com • 1-800-955-7434

solar**edge**

Southwire  
P4 CHINA  
COVER

Southwire  
P4 CHINA  
COVER



PHOTOVOLTAIC POWER SOURCE





**⚠ DANGER**  
HAZARDOUS VOLTAGE. WILL CAUSE SEVERE BURNING OR DEATH.  
Never operate switch with cover open.  
If fused, turn OFF switch before removing or installing fuse.

**⚠ PELIGRO**  
VOLTAJE PELIGROSO. PUEDE CAUSAR HERIDAS O LA MUERTE.  
Nunca opere el interruptor con la cubierta abierta.  
Si el interruptor usa fusibles, asegure su presencia a la cubiertas.  
Mida el voltaje con un dispositivo de medición adecuado en lazo de carga de los clips de fusibles (o fusibles) para comprobar que el interruptor está desconectado.  
Desconectar la alimentación del interruptor antes de trabajar dentro del mismo.

**⚠ DANGER**  
TENSION DANGEROUSE. PEUT CAUSER DES BLESSURES GRAVES OU LA MORT.  
Ne jamais manœuvrer l'interrupteur lorsque le couvercle est ouvert.  
Si est muni d'un fusible, mesurer l'intensité avant d'ôter ou d'installer un fusible.  
Toujours utiliser un dispositif de mesure de la tension dans le cône chargé du interrupteur (ou fusibles) pour confirmer que l'interrupteur est hors circuit (OFF).  
Couper l'alimentation en amont de l'interrupteur avant toute intervention. Éviter de remettre sous tension.

**ET-N**

**UL LISTED**  
ENCLOSURE SWITCH  
INTERRUPTOR EN GABINETE  
ISSUE NO. 31-72

**NOM-367-AMC**

0819/2024  
**DG222NRB**  
GENERAL DUTY SAFETY SWITCH  
Type 3R Enclosure - Rainproof

**TERMINALS SUITABLE FOR AL-CU WIRE.**  
INTERRUPTOR DE SEGURIDAD DE SERVICIO GENERAL  
Gabinete NEMA 3R - A Prueba De Lluvia

**TERMINALES ADECUADAS PARA CONDUCTORES DE AL-CU.**  
INTERRUPTEUR DE SÉCURITÉ À USAGE GÉNÉRAL  
Enveloppe De Type 3R - A L'Épreuve De La Pluie

**BORNES CONVENANT POUR CONDUCTEURS AL-CU.**  
Horsepower Ratings

Volts / Tension / Voltage	1 Phase / 1 Fase		3 Phase / 3 Fase		Regimes / Horsepower
	Std. / Est.	Max.	Std. / Est.	Max.	
120 / 127 ~	1 1/2 (1,119)	3 (2,238)	-	-	-
240~	3 (2,238)	10 (7,46)	7 1/2 (5,60)	15 (11,19)	-

\*For grounded B Phase systems only.  
Maximum fuse size 80A.  
The starting current of motors of more than the standard horsepower characteristics.  
Continuous load current not to exceed 80% of the rating of fuses.  
Suitable for use on a circuit capable of delivering not more than 100,000 RMS symmetrical amperes, 240 V maximum, when Class R fuses are used. Fuse kit DS16FK is required for R fuses.  
**⚠ DANGER** - Unless Class R fuses are used, this switch may present a risk of fire and personal injury if installed on circuits capable of delivering more than 10,000 RMS symmetrical amperes.  
When used with Class K or H fuses, suitable for use on a circuit capable of delivering not more than 10,000 RMS symmetrical amperes, 240 volts maximum.  
Experience has shown that renewable fuses can cause overheating problems and thus the use of renewable fuses is not recommended.  
Use 80°C or 75°C wire.  
Lug torque / Hex across flats: 5/32" / 100 Lb.-In.  
Wire range  
14-10 AWG, 2.1 to 53.5 mm² AL-CU

**Accesorios**  
Instalar per instrucciones supplied with kit.

Ground lug kit DG030GB  
Neutral kit DG100NB  
3/4" (19,05mm) Hub size DS075H1  
1" (25,40 mm) Hub size DS100H1  
1 1/2" (31,75mm) Hub size DS125H1  
1 3/4" (38,10mm) Hub size DS150H1  
2" (50,80mm) Hub size DS200H1

**Accesorios**  
Instalar de acuerdo a instrucciones incluidas en los accesorios.

Juego de partes para terminal de tierra DG030GB  
Juego de neutro DG100NB  
3/4" (19,05mm) Tamaño de copia DS075H1  
1" (25,40 mm) Tamaño de copia DS100H1  
1 1/2" (31,75mm) Tamaño de copia DS125H1  
1 3/4" (38,10mm) Tamaño de copia DS150H1  
2" (50,80mm) Tamaño de copia DS200H1

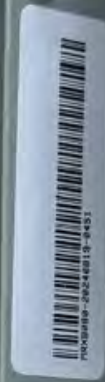
**Accesorios**  
Instalar conformément aux directives fournies avec l'ensemble.

Ensemble de bornes de MALT DG030GB  
Ensemble de neutres DG100NB  
3/4" (19,05mm) Calibre des manchons DS075H1  
1" (25,40 mm) Calibre des manchons DS100H1  
1 1/2" (31,75mm) Calibre des manchons DS125H1  
1 3/4" (38,10mm) Calibre des manchons DS150H1  
2" (50,80mm) Calibre des manchons DS200H1

Adequado para usarse como equipo de acortada.  
Adequado para usarse en circuitos capaces de entregar no más de 100 000 A RMS simétricos, con 240 V máximo, cuando se utilizan fusibles clase R. Solo para sistemas con falla a tierra en fase B.  
La corriente de arranque de motores con capacidad mayor a los cables de potencia estándar puede requerir del uso de fusibles con características de retardo de tiempo apropiadas.  
La corriente de carga continua no debe exceder el 80% de la capacidad de fusible equipado, con excepción de los circuitos de motores.  
Cuando se utiliza con fusibles clase K o H, es adecuado para usarse en circuitos con capacidad de entregar no más de 10 000 A RMS simétricos, con 240 V máximo.  
**PELIGRO** - a menos que se utilicen fusibles clase R, este interruptor puede presentar riesgos de incendio y daño personal si se instala en circuitos con capacidad de entregar más de 10 000 A RMS simétricos.  
Cuando se utiliza con fusibles clase K o H, es adecuado para usarse en circuitos con capacidad de entregar no más de 10 000 A RMS simétricos, con 240 V máximo.  
La experiencia muestra que los fusibles renovables pueden causar problemas de sobrecalentamiento, por lo tanto, el uso de fusibles renovables no es recomendable.  
Usar conductores para 80°C o 75°C.  
Par de apriete de terminales / Torallo de cabeza hexagonal / 2,97 mm / 11,3 N.m.  
Rango de la sección transversal del conductor  
14-10 AWG, 2.1 a 53.5 mm² AL-CU

Approprié comme équipement d'entrée de service  
\*Seulement pour des systèmes de phase B MALT.  
Calibre maximum du fusible 80A.  
L'installation de démarrage des moteurs plus élevée que pour les "horsepower" standards peut exiger l'utilisation de fusibles ayant des caractéristiques de temporisation appropriées.  
Toute charge continue ne devra pas excéder 80% du calibre des fusibles utilisés sauf s'il s'agit de circuits de moteurs.  
Convient à un circuit de 100,000 ampères efficaces symétriques au plus, 240 V maximum, lorsque des fusibles de classe R sont utilisés. Ensemble de fusible DS16FK requis pour fusibles R.  
**DANGER** - À moins d'utiliser des fusibles de classe R, cet interrupteur peut présenter des risques d'incendie et de blessures corporelles s'il est installé dans un circuit de plus 10,000 ampères efficaces symétriques.  
Si utilisé avec des fusibles K ou H, l'interrupteur sera approprié pour utilisation sur un circuit ne délivrant pas plus de 10,000 ampères RMS symétriques, 240V maximum.  
L'expérience démontre que l'utilisation de fusibles renouvelables peut causer des problèmes de surchauffe et, par conséquent, ces fusibles ne sont pas recommandés.

Utiliser conducteur 80°C ou 75°C.  
Torque aux bornes / Vis à tête six pans / 5/32" / 100 Lb.-In.  
Plage de conducteurs  
14-10 AWG, 2.1 à 53.5 mm² AL-CU



**REINSTALL AFTER**  
**REINSTALE DESPUÉS DE**  
**REINSTALLER APRÈS L'INSTALLATION**





REINSTALL AFTER WIRING  
REINSTALE DESPUÉS DEL CABLEADO  
REINSTALLER APRÈS L'INSTALLATION ÉLECTRIQUE  
INSTALL 1ST



**EATON**

General Duty Safety Switch  
Interrupteur de sécurité à usage général  
Interruptor de seguridad de servicio general

60 A, 240 V~, 60 Hz

Complete ratings inside  
Valeurs nominales complètes à l'intérieur  
Información completa de capacidades en el interior

Further instructions inside  
Autres instructions à l'intérieur  
Instrucciones adicionales en el interior

Made in U.S.A. / Fabriqué aux É.-U. / Hecho en E.U.A.

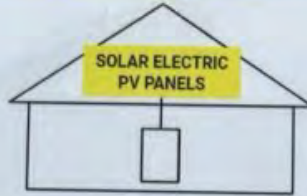
**⚠ DANGER**  
HAZARDOUS VOLTAGE. WILL CAUSE SEVERE INJURY OR DEATH.  
• Turn circuit breaker switch OFF.  
• Turn OFF power source or switch before doing any work inside. Holders at parts. Close cover before turning power ON.  
TENSION DANGEREUSE. PEUT CAUSER DES BLESSURES GRAVES OU LA MORT.  
• Ne jamais réinitialiser l'interrupteur lorsque le couvercle est fermé.  
• Couper l'alimentation ou arrêter de l'interrupteur avant toute intervention. Remplacer les pièces. Fermer le couvercle avant de remettre sous tension.

**⚠ PELIGRO**  
VOLTAJE PELIGROSO. PUEDE CAUSAR HERIDAS SEVERAS O LA MUERTE.  
• Nunca opere el interruptor con la cubierta abierta.  
• Desconectar la alimentación del interruptor antes de trabajar dentro del mismo. Reemplazar todas las partes. Cerrar la cubierta antes de energizar al interruptor.

30-43080



**SOLAR PV SYSTEM  
EQUIPPED WITH  
RAPID SHUTDOWN**



TURN RAPID SHUTDOWN SWITCH TO THE "OFF" POSITION TO SHUT DOWN PV SYSTEM AND REDUCE SHOCK HAZARD IN THE ARRAY

**RAPID SHUTDOWN  
SWITCH FOR  
SOLAR PV SYSTEM**

**CAUTION:**  
MULTIPLE SOURCES OF POWER  
THE SERVICE DISCONNECT IS LOCATED  
INSIDE OPPOSITE THE UTILITY METER

**⚠ WARNING**

**ELECTRIC SHOCK HAZARD**

**TERMINALS ON THE LINE AND  
LOAD SIDES MAY BE ENERGIZED  
IN THE OPEN POSITION**

**AC DISCONNECT  
PHOTOVOLTAIC SYSTEM  
POWER SOURCE**

RATED AC OUTPUT CURRENT **24** AMPS  
NOMINAL OPERATING AC VOLTAGE **240** VOLTS



PHOTOVOLTAIC POWER SOURCE



PHOTOVOLTAIC POWER SOURCE

15/00076

EMT

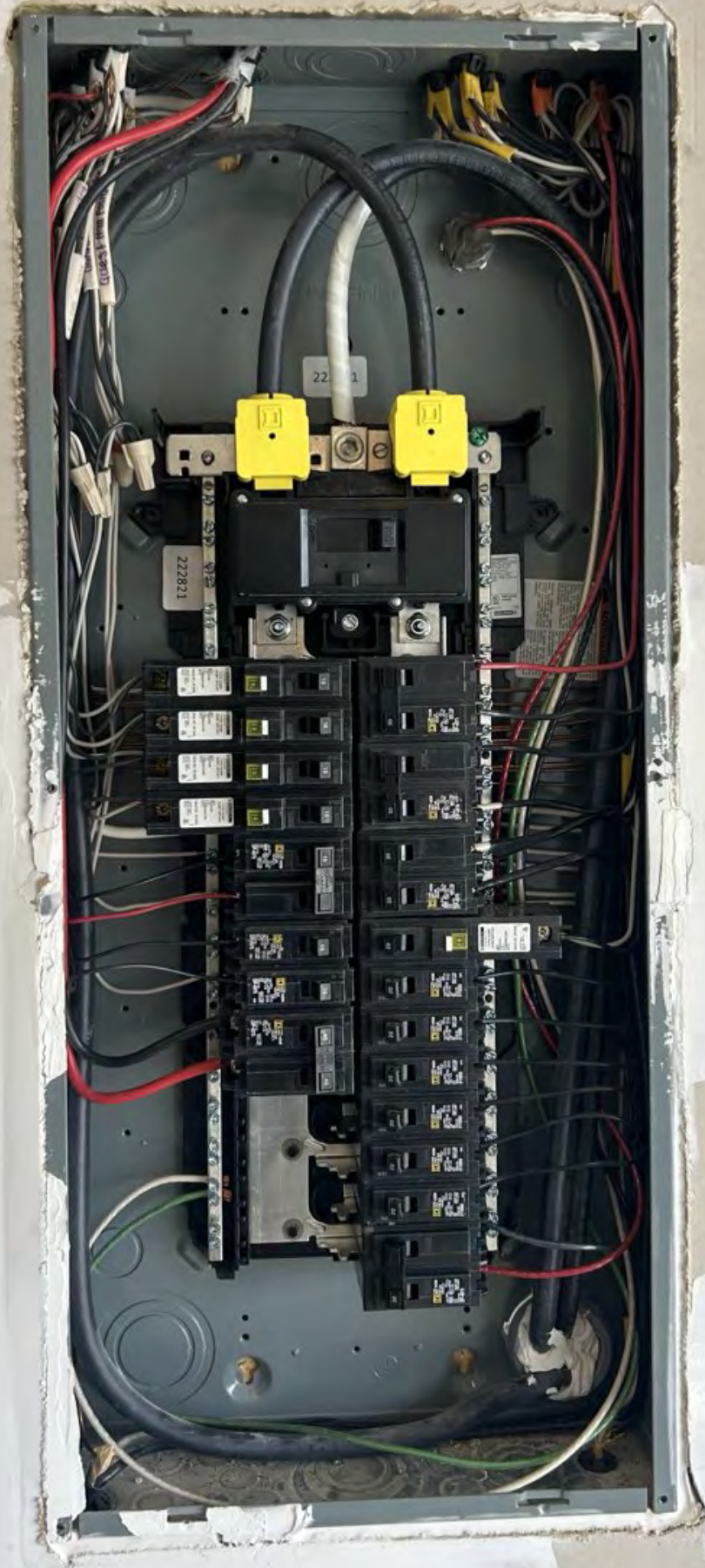




PHOTOVOLTAIC POWER SOURCE

BR2488  
3/4" COVER

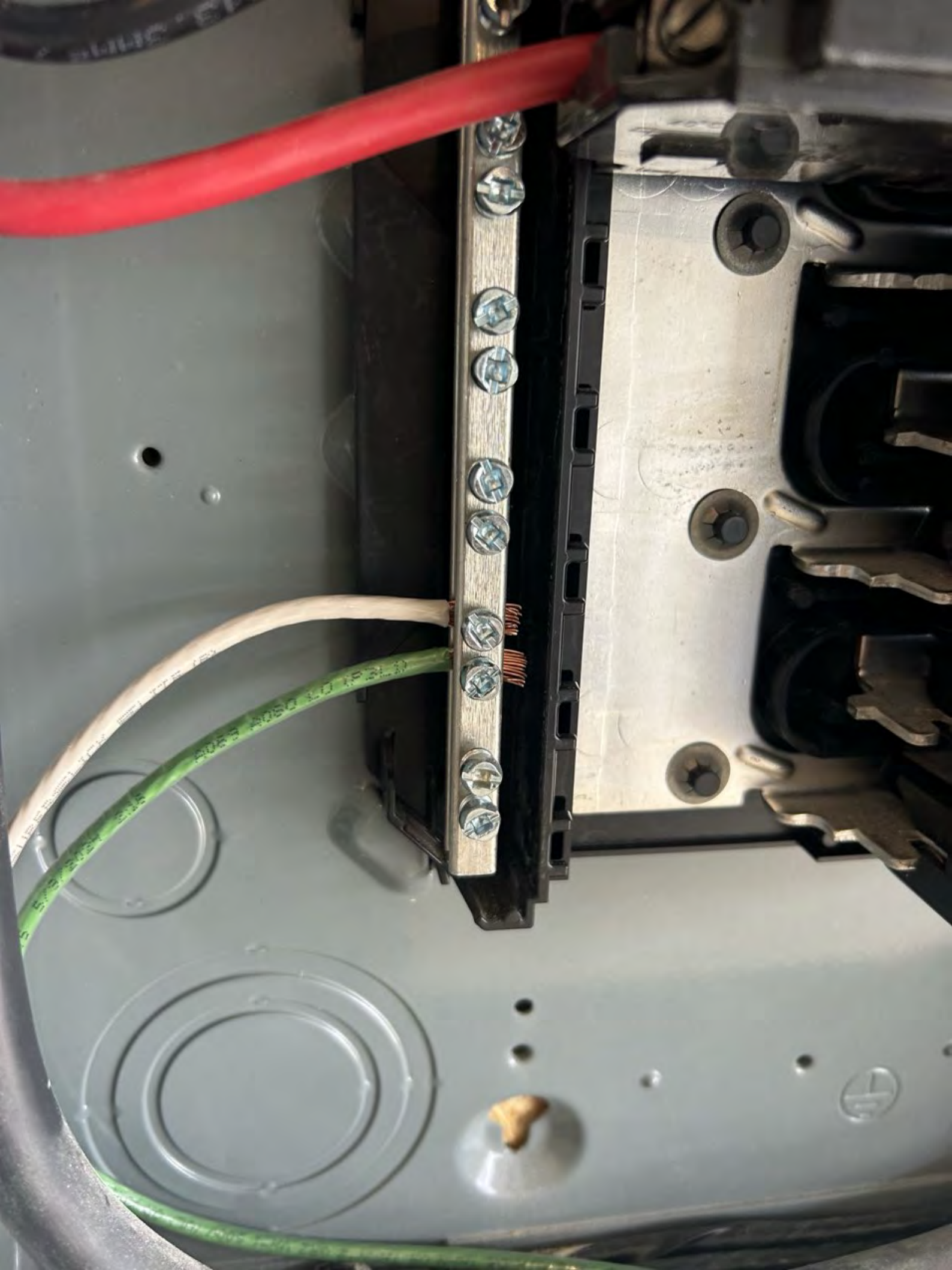




22 1

222821

22









SOLAR PV BREAKER  
BREAKER IS BACKFED  
DO NOT RELOCATE

30

TYPE HOM  
TIPO 10 kA  
120/240 V-

AN/Cu LISTED C.B. HACR TYPE TIPO CARR

DP-4075

ISSUE NO. 0119680

28

TYPE HOM  
TIPO 10 kA  
120/240 V-

AN/Cu LISTED C.B. HACR TYPE TIPO CARR

0119680

20

TYPE HOM  
TIPO 10 kA  
120/240 V-

AN/Cu LISTED C.B. HACR TYPE TIPO CARR

0119680

20

TYPE HOM  
TIPO 10 kA  
120/240 V-

AN/Cu LISTED C.B. HACR TYPE TIPO CARR

0119680

23015

TYPE HOM  
TIPO 10 kA  
120/240 V-

AN/Cu LISTED C.B. HACR TYPE TIPO CARR

0119680

26

28

30



**WARNING ADVERTENCIA**

This equipment is designed and tested by Square D to performance levels which exceed Underwriters Laboratories Standards. Use of Other than Square D Circuit Breakers May Adversely Affect User Safety and Ingar Reliability. Square D disclaims all liability for damage, injury or non-performance caused by the use of other than Square D circuit breakers.



**DANGER**

**HAZARD OF ELECTRIC SHOCK, EXPLOSION OR ARC FLASH**  
 Apply appropriate personal protective equipment (PPE) and follow safe electrical work practices. See NFPA 70E.  
 This equipment must only be installed and serviced by qualified electrical personnel.  
 Power supplying this equipment before working on or inside equipment.  
 Always use a properly rated voltage sensing device to confirm power is off.  
 Replace all devices, doors and covers before turning on power to this equipment.



**PELIGRO DE DESCARGA**

Utilice equipo de protección eléctrica apropiada para el trabajo. Véase NFPA 70E.  
 Este equipo solo debe ser instalado y mantenido por personal calificado.  
 El equipo que suministra energía a este equipo debe estar apagado antes de trabajar en o dentro del equipo.  
 Siempre utilice un dispositivo de detección de voltaje apropiado para confirmar que el equipo está sin energía antes de trabajar.

Failure to follow these instructions will result in death or serious injury.

El incumplimiento de estas instrucciones puede resultar en la muerte o lesiones graves.

29										P.V SOLAR	30
27										P.V SOLAR	28
25										Garage Door GFCI Receptacle	26
23										Washer GFCI Receptacle	24
21										Bath GFCI Receptacle	22
19										Fridge Kitchen GFCI #2 Receptacle	20
17										Microw	18
15										Kitchen GFCI #1 Receptacle	16
13										Dining Receptacle	14
11										#1	12
9										A/C Unit	10
7										Heater	8
5										Water	6

Use only Square D HOM Circuit Breakers. / Utilice sólo interruptores automáticos HOM de Square D.

223742

**D-R-HORTON**  
*America's Builder*

Congratulations on the purchase of your new home! Below is some important warranty information.

To schedule a general warranty request, visit our website, [www.drhorton.com](http://www.drhorton.com). Select the warranty link. You will then see the link to request warranty service. You can also reach us by phone Monday-Friday 8-5 PM at (919) 377-0477 or for after hour EMERGENCIES at (800) 673-6487.

For warranty service needed on the mechanical systems of your home, please contact the appropriate vendor below.

Plumbing: Weather Master (919) 298 4415  
 Electrical: Imperial Electric (919) 363 7474  
 HVAC: Romanoff Heating & Cooling (919) 849 4652  
 Fireplace: Fireside Hearth and Home (336) 274 1563  
 Garage Door: Voyles Overhead Doors (978) 714 3725  
 Appliances: Whirlpool (844) 846 0022

**CAUTION**  
 SOLAR ELECTRIC SYSTEM CONNECTED

**WARNING**  
 DUAL POWER SUPPLY  
 SOURCES, UTILITY GRID  
 AND PV SOLAR  
 ELECTRIC SYSTEM

**CAUTION:**  
 MULTIPLE SOURCES OF POWER  
 THE PV DISCONNECT IS LOCATED  
 BESIDE THE SERVICE METER

**RAPID SHUTDOWN  
 SWITCH FOR  
 SOLAR PV SYSTEM**

**WARNING**  
 POWER SOURCE  
 OUTPUT CONNECTION  
 DO NOT RELOCATE THIS  
 OVERCURRENT DEVICE

**SOLAR POINT OF INTERCONNECTION**

**⚡ CAUTION ⚡**  
SOLAR ELECTRIC SYSTEM CONNECTED

APPENDIX E-1 ENERGY EFFICIENCY CERTIFICATE  
Section 15191.14 & NCECC PART 3

Property Address: 462 Blue Aspen Drive

PROVISION RATING	SCALE	BUILDING AIR LEAKAGE
CEILING/ROOF	156	ACH50 3.08
WALL	19	
FLOOR		
DOOR		
WINDOW		
GLAZING		
INSULATION	10	
MECHANICAL		
VENTILATION		
ENERGY STAR APPLIANCES		
ENERGY STAR LIGHTING		
ENERGY STAR WATER HEATING		
ENERGY STAR REFRIGERATION		
ENERGY STAR AIR CONDITIONING		
ENERGY STAR HEATING		
ENERGY STAR COOLING		
ENERGY STAR DRYERS		
ENERGY STAR DISHWASHERS		
ENERGY STAR REFRIGERATORS		
ENERGY STAR FREEZERS		
ENERGY STAR STOVE/OVEN		
ENERGY STAR MICROWAVES		
ENERGY STAR TV'S		
ENERGY STAR VIDEO		
ENERGY STAR AUDIO		
ENERGY STAR PERIPHERALS		
ENERGY STAR MONITORS		
ENERGY STAR KEYBOARDS		
ENERGY STAR MICE		
ENERGY STAR ROUTERS		
ENERGY STAR NETWORK SWITCHES		
ENERGY STAR NETWORK STORAGE DEVICES		
ENERGY STAR NETWORK PRINTERS		
ENERGY STAR NETWORK SCANNERS		
ENERGY STAR NETWORK FAXES		
ENERGY STAR NETWORK CAMERAS		
ENERGY STAR NETWORK PHONES		
ENERGY STAR NETWORK VOIP DEVICES		
ENERGY STAR NETWORK ROUTERS		
ENERGY STAR NETWORK SWITCHES		
ENERGY STAR NETWORK STORAGE DEVICES		
ENERGY STAR NETWORK PRINTERS		
ENERGY STAR NETWORK SCANNERS		
ENERGY STAR NETWORK FAXES		
ENERGY STAR NETWORK CAMERAS		
ENERGY STAR NETWORK PHONES		
ENERGY STAR NETWORK VOIP DEVICES		

INSULATION RATING: 10  
MECHANICAL: 10  
VENTILATION: 10  
ENERGY STAR APPLIANCES: 10  
ENERGY STAR LIGHTING: 10  
ENERGY STAR WATER HEATING: 10  
ENERGY STAR REFRIGERATION: 10  
ENERGY STAR AIR CONDITIONING: 10  
ENERGY STAR HEATING: 10  
ENERGY STAR COOLING: 10  
ENERGY STAR DRYERS: 10  
ENERGY STAR DISHWASHERS: 10  
ENERGY STAR REFRIGERATORS: 10  
ENERGY STAR FREEZERS: 10  
ENERGY STAR STOVE/OVEN: 10  
ENERGY STAR MICROWAVES: 10  
ENERGY STAR TV'S: 10  
ENERGY STAR VIDEO: 10  
ENERGY STAR AUDIO: 10  
ENERGY STAR PERIPHERALS: 10  
ENERGY STAR MONITORS: 10  
ENERGY STAR KEYBOARDS: 10  
ENERGY STAR MICE: 10  
ENERGY STAR ROUTERS: 10  
ENERGY STAR NETWORK SWITCHES: 10  
ENERGY STAR NETWORK STORAGE DEVICES: 10  
ENERGY STAR NETWORK PRINTERS: 10  
ENERGY STAR NETWORK SCANNERS: 10  
ENERGY STAR NETWORK FAXES: 10  
ENERGY STAR NETWORK CAMERAS: 10  
ENERGY STAR NETWORK PHONES: 10  
ENERGY STAR NETWORK VOIP DEVICES: 10

TESTING DATE: 02/07/13

THIS HOME IS SOLAR READY!

**⚠ WARNING**  
DUAL POWER SUPPLY  
SOURCES: UTILITY GRID  
AND PV SOLAR  
ELECTRIC SYSTEM

**CAUTION:**  
MULTIPLE SOURCES OF POWER  
THE PV DISCONNECT IS LOCATED  
BESIDE THE SERVICE METER

**RAPID SHUTDOWN  
SWITCH FOR  
SOLAR PV SYSTEM**

**⚠ WARNING**  
POWER SOURCE  
OUTPUT CONNECTION  
DO NOT RELOCATE THIS  
OVERCURRENT DEVICE

**SOLAR POINT OF INTERCONNECTION**







