

DE-ENERGIZARE
BEFORE
CUTTING
WIRING
BELOW
SAFETY
EQUIPMENT
INSTALL
CIRCUIT

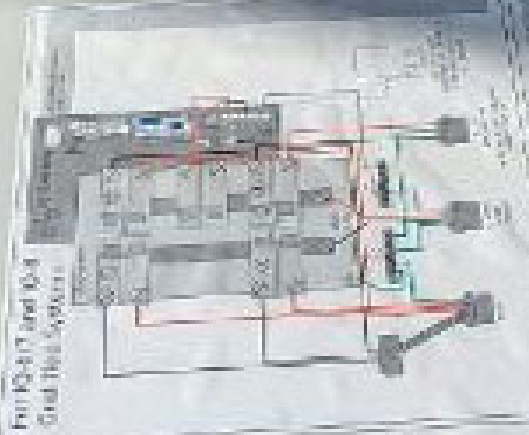
INVOCY



ATTENTION
DO NOT REMOVE THIS LABEL
FROM THE CIRCUIT BREAKER
UNTIL THE WIRING IS COMPLETE



IN CIRCUIT BREAKER, THE
CIRCUIT BREAKER IS
DESIGNED TO PROTECT THE
CIRCUIT FROM OVERCURRENT
AND SHORT CIRCUIT
CONDITIONS.



WARNING
This equipment is designed to be used in accordance with the instructions provided in the user manual. Failure to follow these instructions may result in property damage, personal injury, or death.

WARNING
This equipment is designed to be used in accordance with the instructions provided in the user manual. Failure to follow these instructions may result in property damage, personal injury, or death.



UL
LISTED

UL
CLASSIFIED

UL
CLASSIFIED

UL
CLASSIFIED

ALL INFORMATION CONTAINED
HEREIN IS UNCLASSIFIED

DATE 03-11-2011 BY 60322 UCBAW/STP

ALL INFORMATION CONTAINED
HEREIN IS UNCLASSIFIED

DATE 03-11-2011 BY 60322 UCBAW/STP

ALL INFORMATION CONTAINED
HEREIN IS UNCLASSIFIED

DATE 03-11-2011 BY 60322 UCBAW/STP

ALL INFORMATION CONTAINED
HEREIN IS UNCLASSIFIED

DATE 03-11-2011 BY 60322 UCBAW/STP

ALL INFORMATION CONTAINED
HEREIN IS UNCLASSIFIED

DATE 03-11-2011 BY 60322 UCBAW/STP

DATE 03-11-2011 BY 60322 UCBAW/STP

ALL INFORMATION CONTAINED
HEREIN IS UNCLASSIFIED

DATE 03-11-2011 BY 60322 UCBAW/STP

ALL INFORMATION CONTAINED
HEREIN IS UNCLASSIFIED

DATE 03-11-2011 BY 60322 UCBAW/STP

ALL INFORMATION CONTAINED
HEREIN IS UNCLASSIFIED

DATE 03-11-2011 BY 60322 UCBAW/STP

ALL INFORMATION CONTAINED
HEREIN IS UNCLASSIFIED

DATE 03-11-2011 BY 60322 UCBAW/STP

Photovoltaic Combiner Box X2-IQ-AM1-240-4 IEEE1547:2018 COMPLIANT

Electrical ratings

Voltage 240VAC, 60Hz
 DG Breakers 80A MAX (combined)
 DG Inputs 64A MAX (combined)
 Output 65A MAX, 90A MAX feeder OCPD
 Temperature 46°C MAX ambient
 For DG breaker, use only Eaton BR series.


202317124787

P/N:


202317124787


883-00353 15

Dedicated solar and DG Combiner Box - do not add loads
 10 AMP or 15 AMP IQ Gateway Breaker not used for backfeed

Connection	Wire sizes	Torque
DG Breaker (1, 2, 3, 4)	14-10 AWG 8 AWG 6-4 AWG	2.2 Nm (20 lb-in) 2.8 Nm (25 lb-in) 3.0 Nm (27 lb-in)
60A Circuit Breaker only	4-1/0 AWG	5.0 Nm (45 lb-in)
IQ Gateway Breaker	14-10 AWG	2.26 Nm (20 lb-in)
Neutral and ground	Large screw	5.6 Nm (45 lb-in) 5.1 Nm (45 lb-in)
	Small screw	3.6 Nm (32 lb-in) 2.6 Nm (23 lb-in) 2.3 Nm (20 lb-in)
Main lug	10-4 AWG	5.0 Nm (45 lb-in)
	3-2/0 AWG	5.6 Nm (50 lb-in)

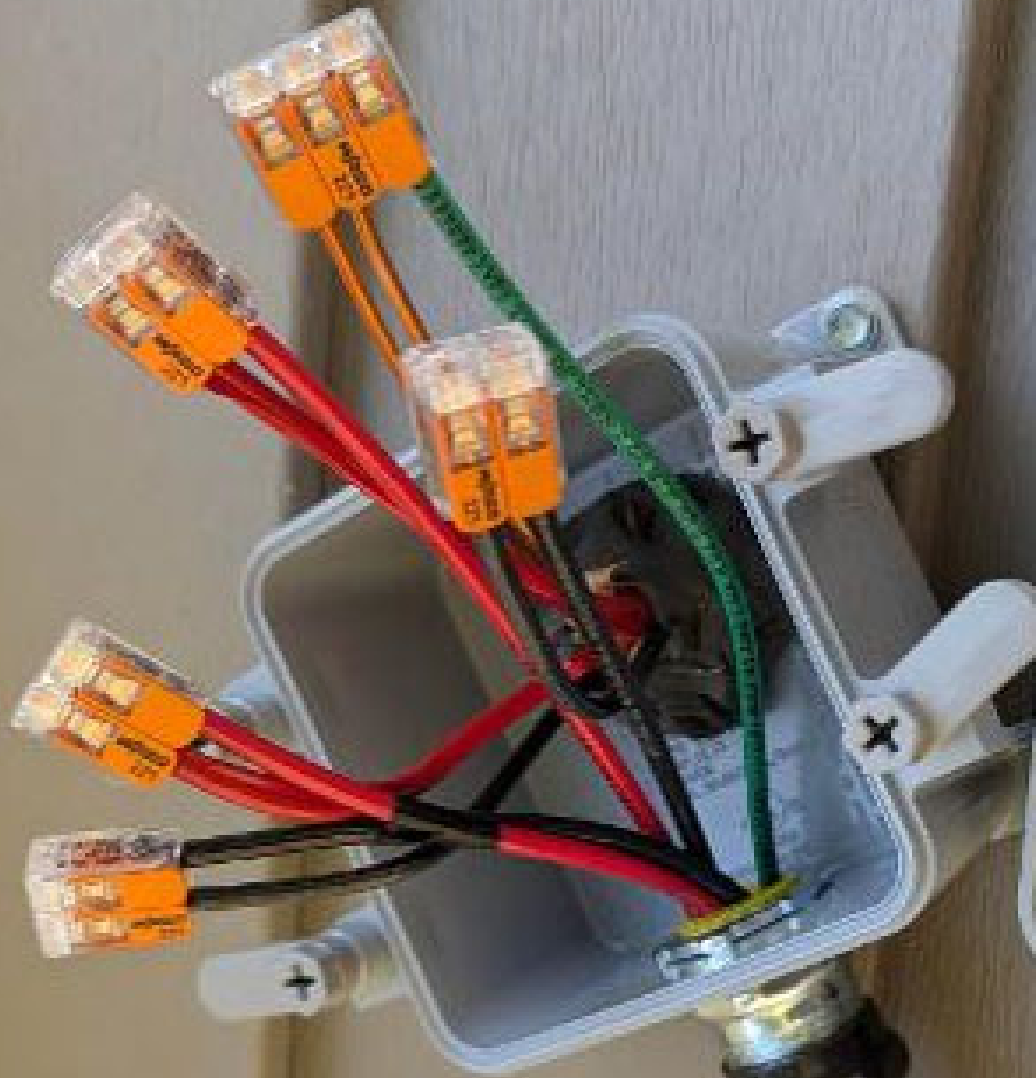
Copper conductors only, rated min. 75°C.

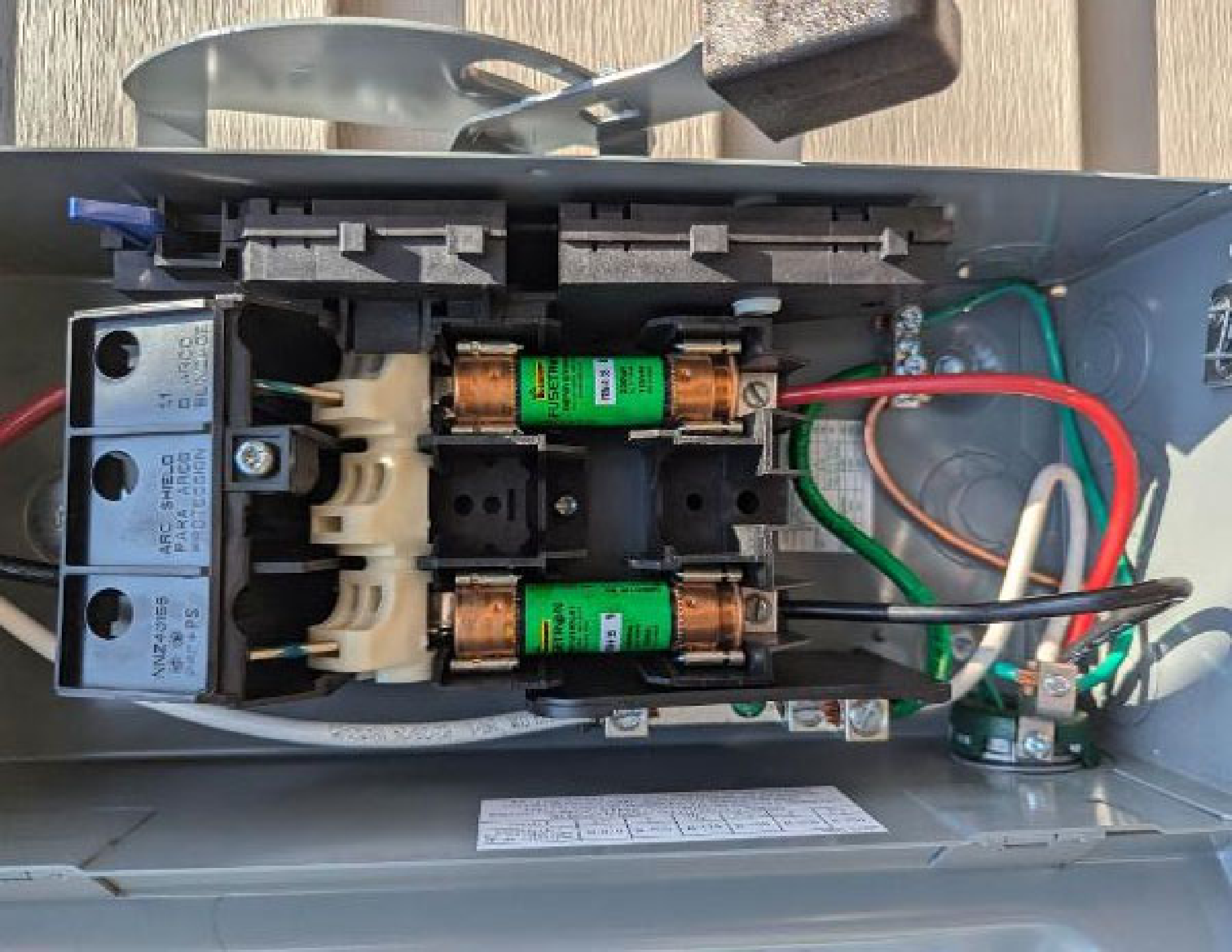
Follow NFPA 70 (NEC), or CSA C22.1 part 1, and all local codes.

For DG Breakers larger than 20A, use wire insulated for 90°C.



NO WORKERS
IN THIS AREA





ARC SHIELD
PARA AREA
PROTECCION

ARC SHIELD
PARA AREA
PROTECCION

ARC SHIELD
PARA AREA
PROTECCION

FUSEM
2000V
1500A
1500A

FUSEM
2000V
1500A
1500A

Technical specifications label with columns for parameters and values.



Busstron
FUSETRON
ENERGY EFFICIENT
DUAL-ELEMENT
CLASS R-35

FRN-R-35

250VAC
AC 100A
125VDC
DC 100A

Busstron
FUSETRON
ENERGY EFFICIENT
DUAL-ELEMENT
CLASS R-35

R-35

250VAC
AC 100A
125VDC
DC 100A

50-72-181 7/2/08 1-100 100







ENPHASE

PHOTOVOLTAIC SYSTEM
AC COMBINER PANEL



WARNING

**AUTHORIZED
PERSONNEL ONLY**

DO NOT ADD LOADS

NO DC WIRES PRESENT
RAMP SHUTDOWN
TEST NOT REQUIRED

⚠ WARNING

DUAL POWER SUPPLY

**SOURCES: UTILITY GRID AND
PV SOLAR ELECTRIC SYSTEM**

NOTICE

**IN CASE OF EMERGENCY,
PLEASE CONTACT:**

**BLUE RAVEN SOLAR
(800) 377-4480**

CAUTION

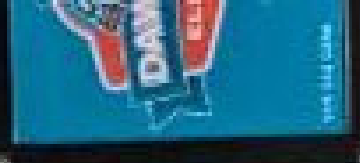


⚠ PELIGRO



31300 2104 39 1 001 CSM 301A 1 005
#221 0F9270 H574
DART ENERGY PROCESS
348 716 456

11058
Quantity
100



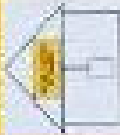
INSTALLATION
AND REPAIRS BY
ALSH ELECTRIC, LLC
20191 453-5687

GENERAC

**EMERGENCY
DISCONNECT
SERVICE
DISCONNECT**

**SOLAR PV SYSTEM EQUIPPED
WITH RAPID SHUTDOWN**

THIS RATED SWITCH
IS NOT TO BE
USED TO
SHUT DOWN THE
SOLAR PV SYSTEM
FOR SERVICE
OR MAINTENANCE
UNLESS
THE LABEL



CAUTION

SEE THE MANUAL FOR PROPER
OPERATION. THIS SWITCH IS
NOT TO BE USED TO
SHUT DOWN THE
SOLAR PV SYSTEM
FOR SERVICE
OR MAINTENANCE
UNLESS
THE LABEL

ADDRESS
12345 Main Street
Anytown, CA 90210

APPROVED
This device is approved for use with
the following equipment:
• 120VAC
• 15A
• 125°C

PERMISSION
This device is not to be used for
any other purpose.

GENERAC
12345 Main Street
Anytown, CA 90210
1-800-333-3333
www.generac.com

12345 Main Street
Anytown, CA 90210
1-800-333-3333
www.generac.com











All Network Wires
(Ethernet) No. 10/100



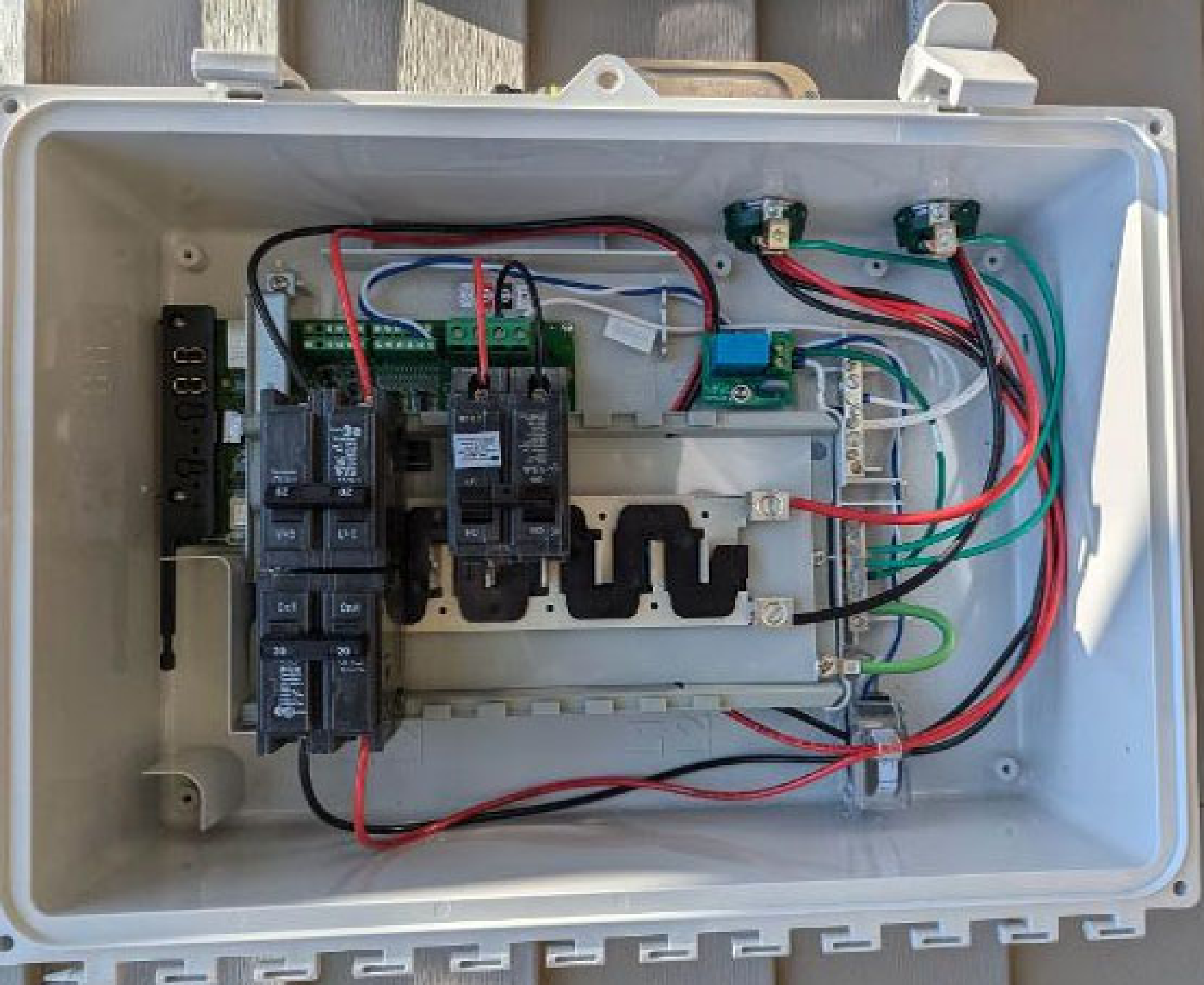


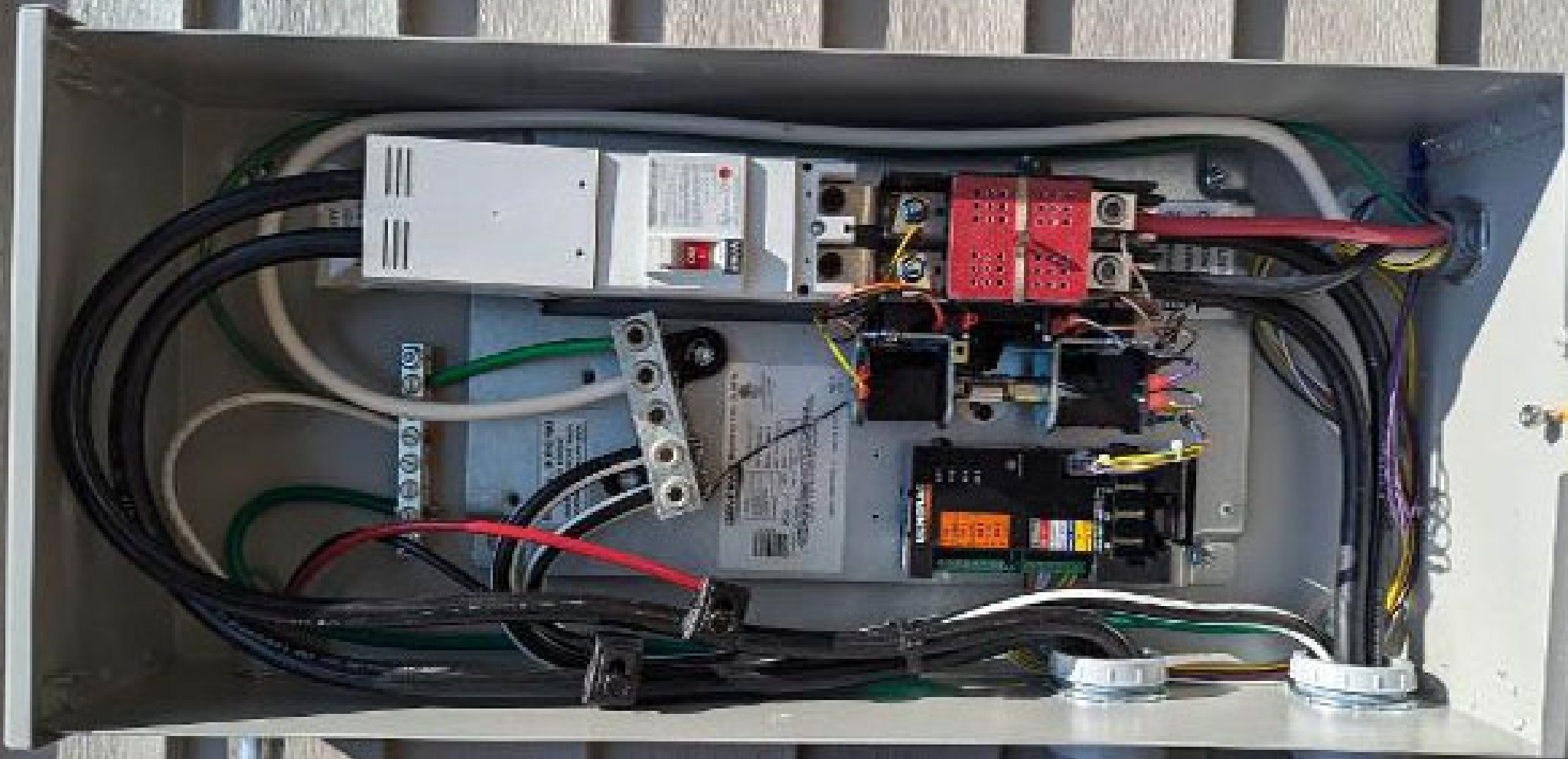


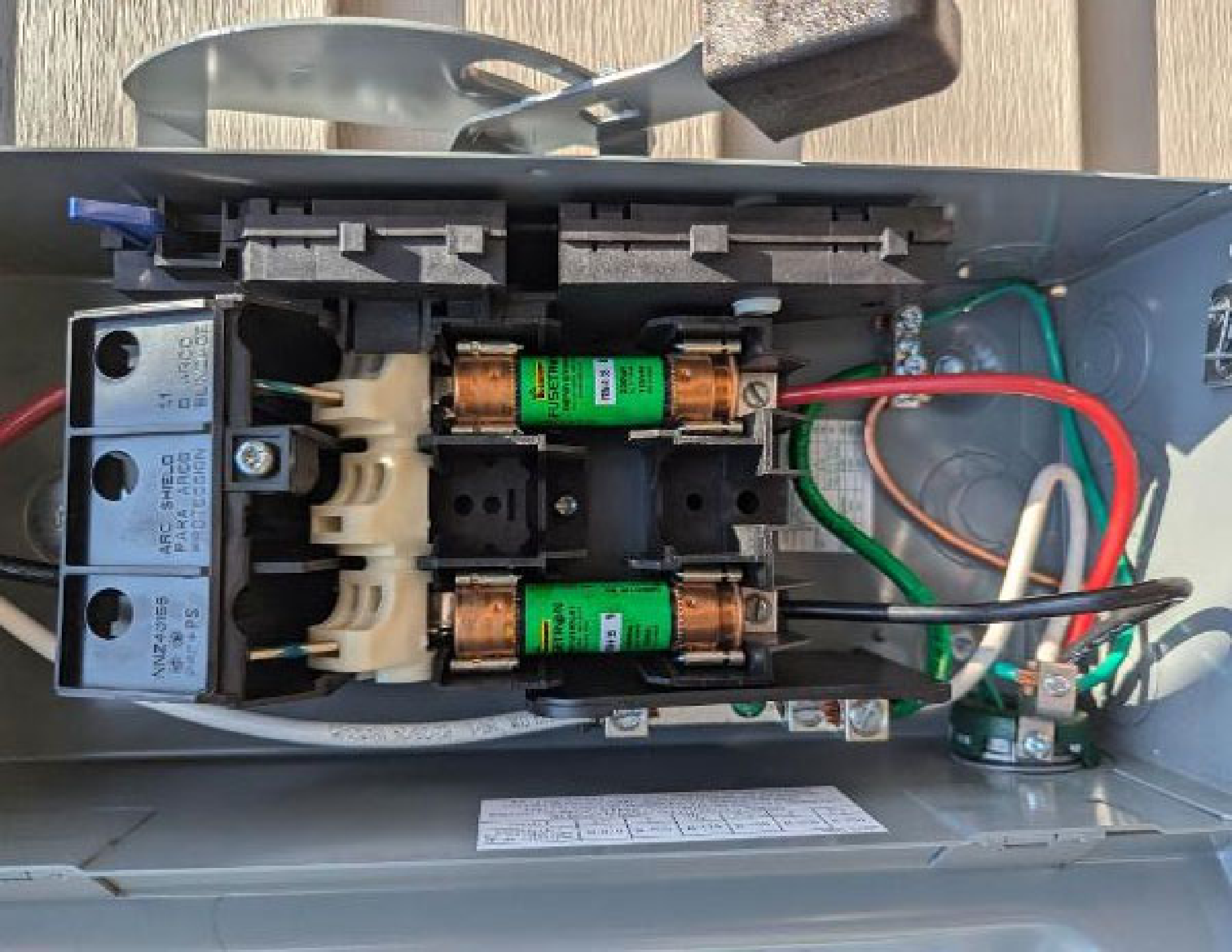


RANGER SYSTEMS
903.448.1173

ENERGIA S.E.
CONEXION







ARC SHIELD
PARA AREA
PROTECCION

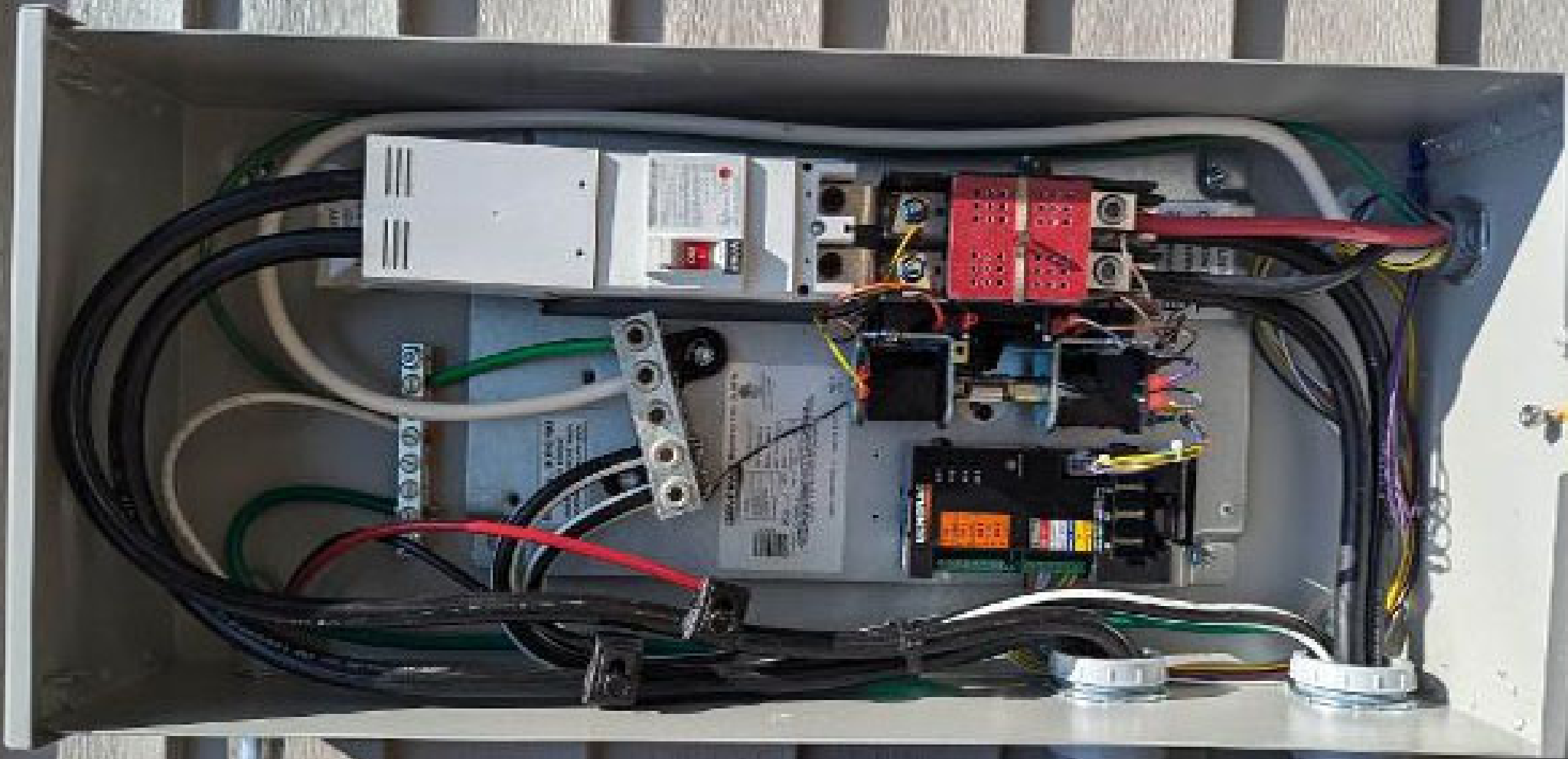
ARC SHIELD
PARA AREA
PROTECCION

ARC SHIELD
PARA AREA
PROTECCION

FUSE
250VAC
1000A
1000A

FUSE
250VAC
1000A
1000A

Technical specifications label with columns for parameters and values.













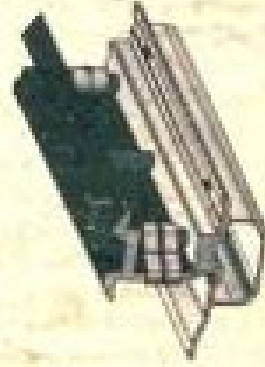


UNIRAC

BETTER SOLAR STARTS HERE

SFM SPLICE 6.5"

250010U



PHOENIX CITY, ARIZONA
4010 W. PARADISE BLVD
AMBIANCE, ARIZONA 85002
FACTORY CODE: 4204



8 100030 250010U

California Proposition 65: WARNING: Cancer &
Reproductive Harm. <http://www.unirac.com>





 **ENPHASE.**

IQ8M

UL LISTED ENERGY STORAGE SYSTEM
UL TYPE LISTED ENERGY STORAGE SYSTEM

Output power: 1000W
Input power: 1000W
Efficiency: 90%
Voltage: 12VDC
Capacity: 100Ah
Weight: 10kg
Dimensions: 300x200x100mm



The field conditions will vary from those shown in the manual. It is the user's responsibility to ensure proper operation of the device under all conditions. If the device is not operating properly, it may be necessary to contact the manufacturer for assistance.

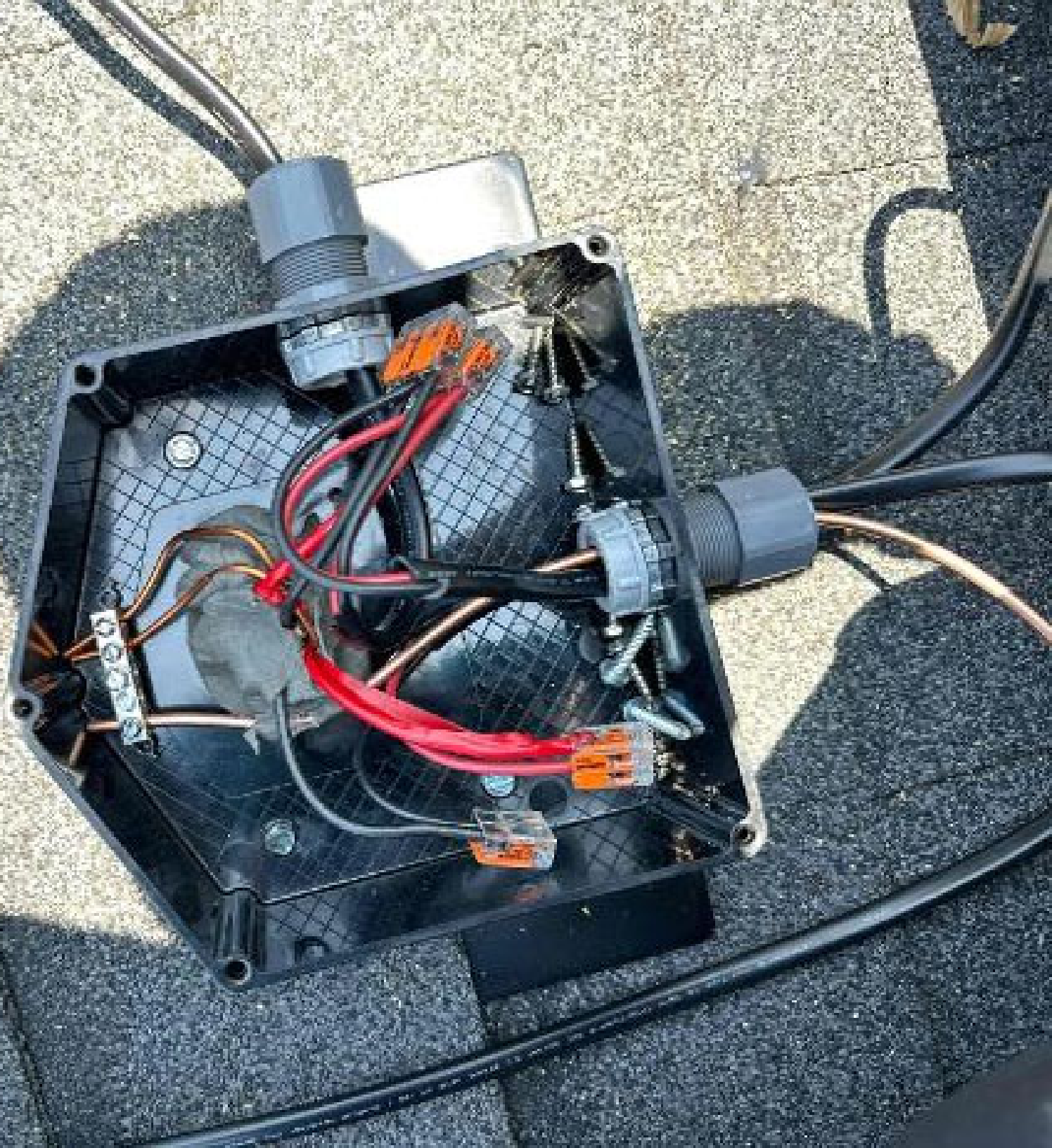


WARNING: This device is not to be used in hazardous environments. It is not to be used in the presence of flammable vapors, gases, or liquids. It is not to be used in the presence of explosive atmospheres. It is not to be used in the presence of high voltage or high current. It is not to be used in the presence of high frequency electromagnetic fields.

ATTENTION: This device is not to be used in the presence of high voltage or high current. It is not to be used in the presence of high frequency electromagnetic fields. It is not to be used in the presence of high temperature. It is not to be used in the presence of high humidity. It is not to be used in the presence of high altitude.



Made in the USA
both imported parts





240208A/0338202

SILFAB  **SILFAB PRIME**
S O L A R **S I L - 4 2 0 Q D**

ELECTRICAL SPECIFICATIONS
 Maximum Power (P_{max}) 420 W
 Maximum Power Voltage (V_{mp}) 33.06V
 Maximum Power Current (I_{mp}) 12.70A
 Open Circuit Voltage (V_{oc}) 38.8V
 Short Circuit Current (I_{sc}) 11.50 A
 Maximum System Voltage (V_{sys}) 1050 V
 Series Field 35 A
 Type 2

Maximum Power (P_{max}) Maximum Power (W)	420 W
Maximum Power Voltage (V_{mp}) Maximum Power Voltage (V)	33.06V
Maximum Power Current (I_{mp}) Maximum Power Current (A)	12.70A
Open Circuit Voltage (V_{oc}) Open Circuit Voltage (V)	38.8V
Short Circuit Current (I_{sc}) Short Circuit Current (A)	11.50 A
Maximum System Voltage (V_{sys}) Maximum System Voltage (V)	1050 V
Series Field	35 A
Type	Type 2

 **WARNING**
 This product is not to be used in applications where the
 maximum system voltage exceeds 1050VDC.
 For more information, visit www.silfab.com



Conforms to CE mark
 Conforms to CE mark

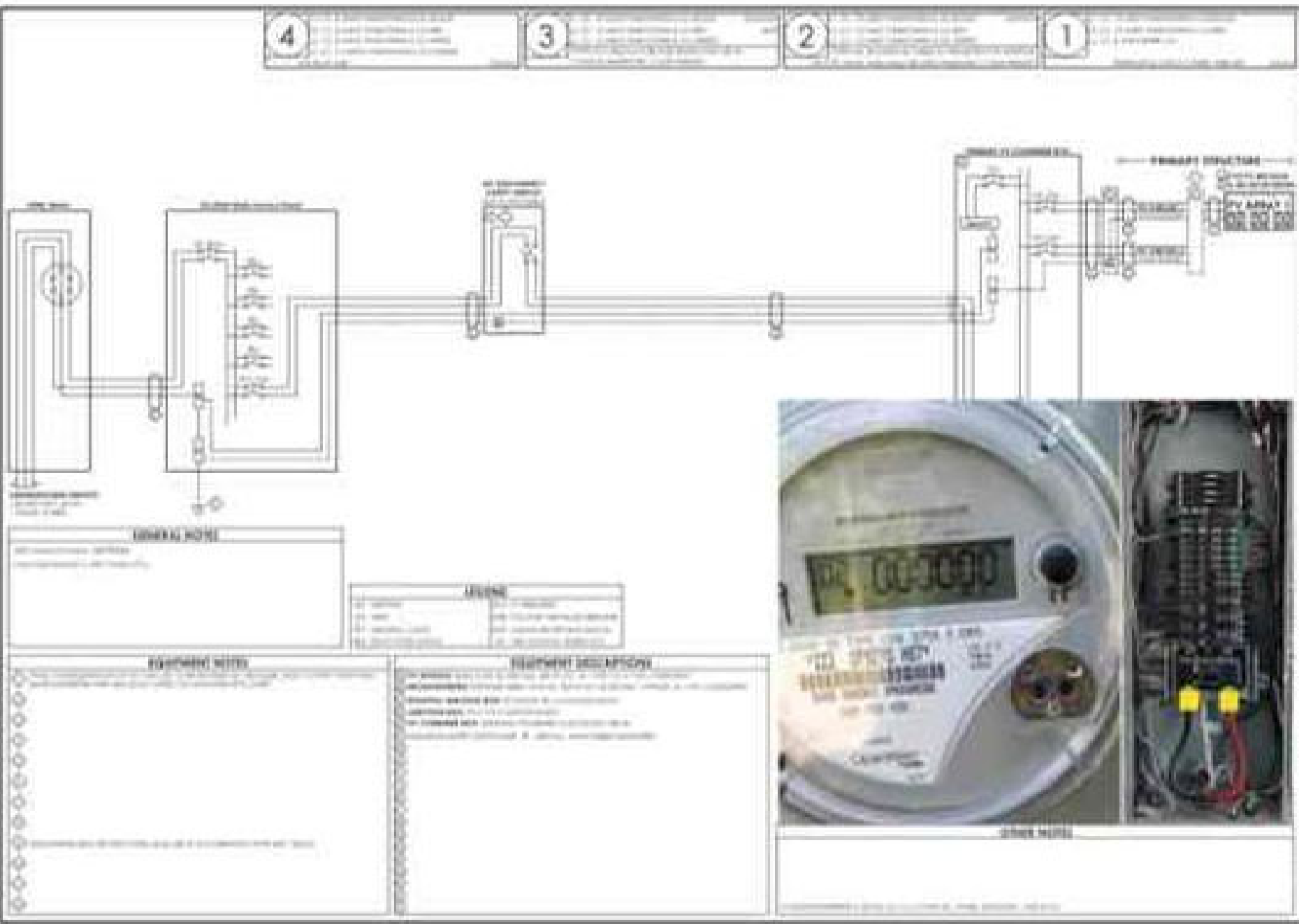


TO DOWNLOAD INSTALLATION MANUAL
 OR DATA SHEET, SCAN QR CODE OR
 GO TO: WWW.SILFABSOLAR.COM
 Made in Canada









BLUE RAVEN

1400 WALKER LANE
 NORTH WILKINSON, NC 27586
 919.487.4400

Laura Gallatin
 35 Woburn Wy
 Lillington, North Carolina 27558

Howell County
 Duke Energy NC

988694

120V AC
 60 Hz
 100 Amp

Electrical
 Single Phase

PV5









UNIRAC SFM INFINITY RACKING

FOR MOUNTING AND GROUNDING SOLAR PV SYSTEMS

UNIRAC, 012701



Power Production

Enabled

Production

Today

0.00 kWh

Lifetime

0.00 kWh

Consumption

Today

0.00 kWh

Lifetime

0.00 kWh

Grid Profile

IEEE 1547 default, 2015 (7.9.1.1)


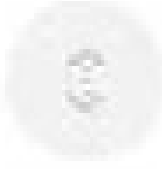
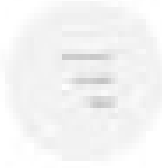
Powerline Scan (Auto)

Scanned

Powerline Scan (Auto)



Connect gateway to Enphase cloud via:

-  Wi-Fi
-  Ethernet
-  Cellular

CenturyLink066

Disconnect from gateway

