

MAX AC VOLTAGE

125 VAC

ALLOWED WIRE

14-10

AMBIENT OPERATING TEMP



Intertek 5019942

NEMA 3R

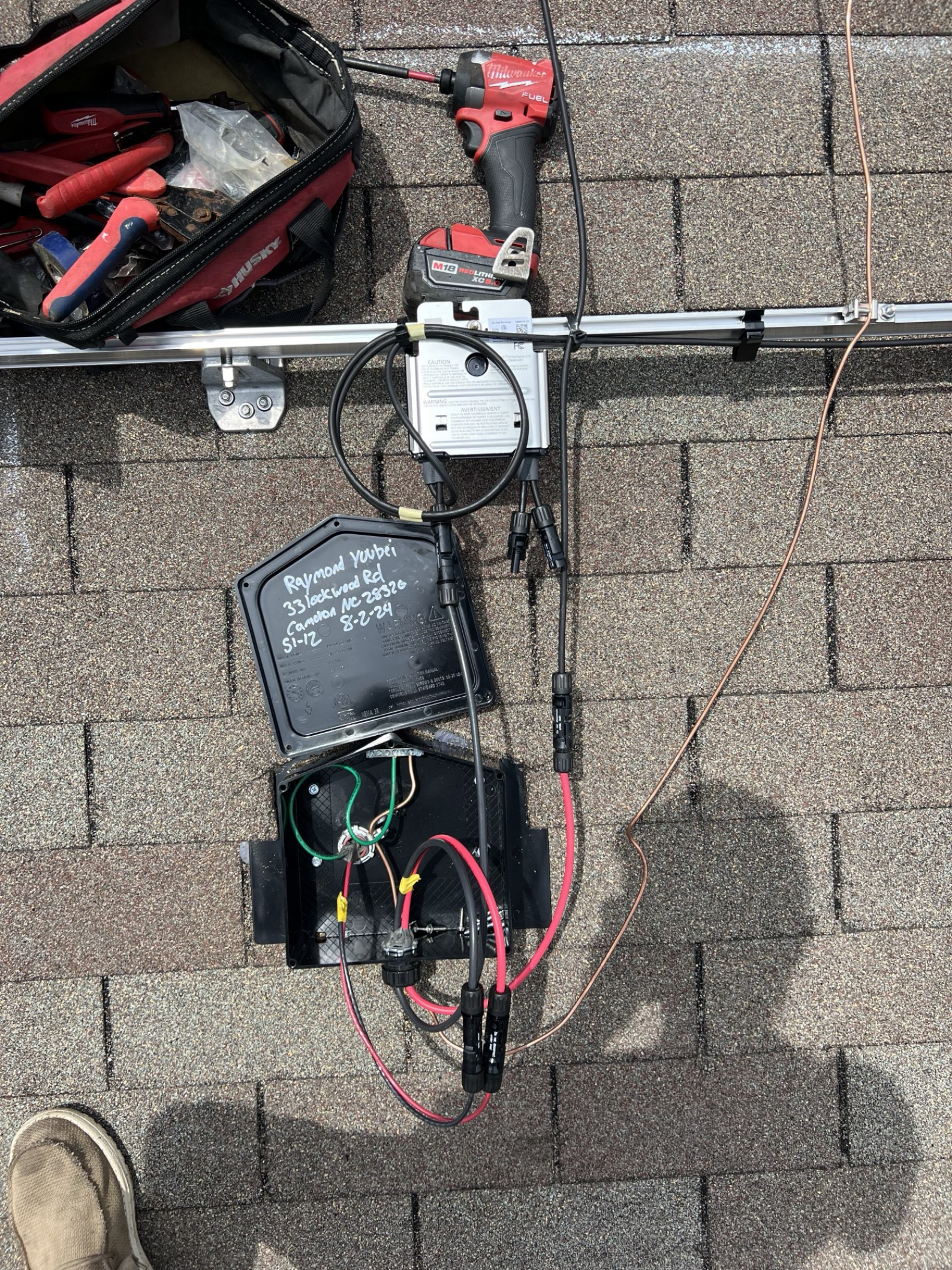
REFER TO INSTALLATION MANUAL
FOR ALL SIZES
TERMS FOR ALL SIZES & VOLTS: 15-20 LBS
CONFORMS TO UL STANDARD 1241

SEE www.intertek.com/patents

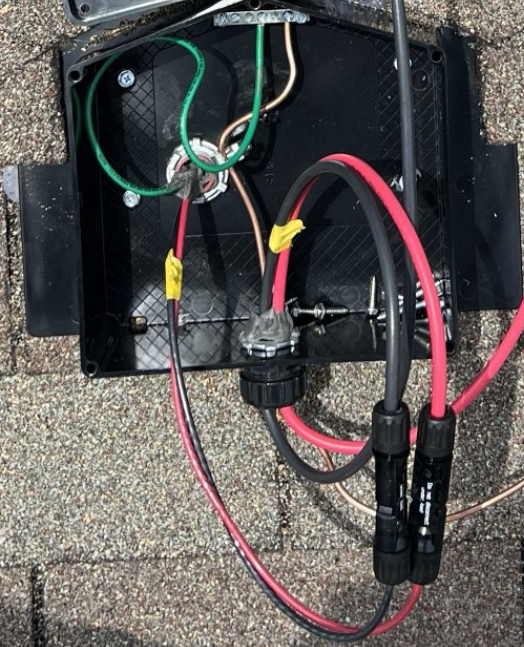


USE 100 NAIL OR 1 1/2 INCHES FTT. 30105

USE 100 NAIL OR 1 1/2 INCHES FTT. 30105



Raymond Yubei
33 Lockwood Rd
Cameron NC 28520
51-12 8-2-24





CAUTION
WARNING
ALERT / AVERTISSEMENT



WARNING
CAUTION
NEVER DISCONNECT
THESE CABLES FROM THE
INVERTER WITHOUT
WEARING GLOVES AND
SAFETY GLASSES.
SEE THE USER MANUAL
FOR MORE INFORMATION.
© 2018 SunPower Corporation
All rights reserved.





WARNING
CAUTION
DO NOT TOUCH THE SURFACE OF THE PANEL
OR THE WIRING. THE SURFACE OF THE PANEL
MAY BE HOT TO THE TOUCH.
DO NOT ATTEMPT TO REPAIR OR
REPLACE THE PANEL OR WIRING.
CONTACT A QUALIFIED SOLAR
INSTALLER FOR SERVICE.
© 2015 SunPower Corporation
Model: SPR-300-1000-NA
1000W
18V
1000W
18V
1000W
18V

CAUTION
DO NOT TOUCH THE SURFACE OF THE
INVERTER. THE SURFACE OF THE
INVERTER MAY BE HOT TO THE TOUCH.
DO NOT ATTEMPT TO REPAIR OR
REPLACE THE INVERTER.
CONTACT A QUALIFIED SOLAR
INSTALLER FOR SERVICE.
© 2015 SunPower Corporation
Model: SPR-300-1000-NA
1000W
18V
1000W
18V
1000W
18V





CAUTION
WARNING
NEVER TOUCH

00000000

1
2
3
4
5
6
7
8
9
10
11
12
13
14
15
16
17
18
19
20
21
22
23
24
25
26
27
28
29
30
31
32
33
34
35
36
37
38
39
40
41
42
43
44
45
46
47
48
49
50
51
52
53
54
55
56
57
58
59
60
61
62
63
64
65
66
67
68
69
70
71
72
73
74
75
76
77
78
79
80
81
82
83
84
85
86
87
88
89
90
91
92
93
94
95
96
97
98
99
100



Handwritten scribble on the white wall.

WARRANTY CARD
Model: [unreadable]
Serial: [unreadable]
Date of Installation: [unreadable]
Installer: [unreadable]
Address: [unreadable]
City: [unreadable] State: [unreadable] Zip: [unreadable]
Phone: [unreadable] Email: [unreadable]
Notes: [unreadable]



Technical specifications label on the solar panel frame, including CE and other certification marks.



2

Small white label with illegible text and a QR code.

CAUTION
ATTENTION
FC
Small white label with illegible text and a QR code.

















CAUTION
With Caution: The fan will
run for several minutes after
the inverter has stopped.
Do not touch the fan or the
inverter while it is running.
Do not touch the fan or the
inverter while it is running.
Do not touch the fan or the
inverter while it is running.
Do not touch the fan or the
inverter while it is running.

WARNING - Les ventilateurs continuent de tourner pendant
plusieurs minutes après l'arrêt de l'inverseur.
Ne touchez pas le ventilateur ou l'inverseur pendant qu'il tourne.
Ne touchez pas le ventilateur ou l'inverseur pendant qu'il tourne.
Ne touchez pas le ventilateur ou l'inverseur pendant qu'il tourne.
Ne touchez pas le ventilateur ou l'inverseur pendant qu'il tourne.

AVERTISSEMENT

Les ventilateurs continuent de tourner pendant
plusieurs minutes après l'arrêt de l'inverseur.
Ne touchez pas le ventilateur ou l'inverseur pendant qu'il tourne.
Ne touchez pas le ventilateur ou l'inverseur pendant qu'il tourne.
Ne touchez pas le ventilateur ou l'inverseur pendant qu'il tourne.
Ne touchez pas le ventilateur ou l'inverseur pendant qu'il tourne.

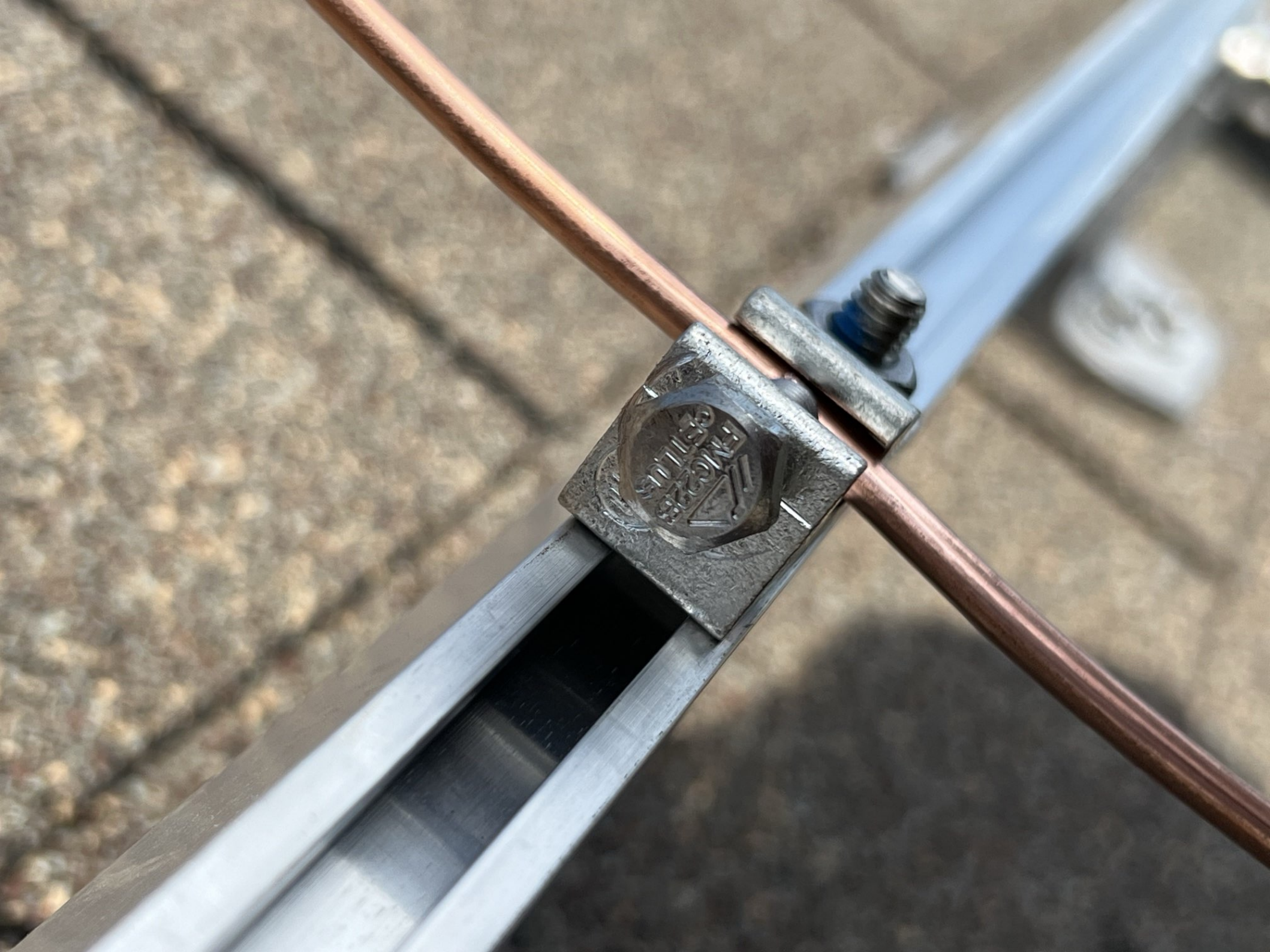
FCC



Raymond Yuba
solar edge
12 Panels
8 Rails
Cameo

HUSKY

CAUTION
WARRANTY







0188407D5-78



Do Not Remove 188407D5-78



Solaredge Technologies Ltd.
Solaredge Technologies GmbH/
Werner-Eckert-Straße 6/81829 Munich/Germany



SolarEdge Technologies Ltd.
Power Optimizer

Solaredge Technologies GmbH/
Werner-Eckert-Straße 6/81829
Munich/Germany

CAUTION

HOT SURFACES-TO REDUCE THE RISK OF BURNS-DO NOT TOUCH. RISK OF ELECTRIC SHOCK-WHEN THE PHOTOVOLTAIC ARRAY IS EXPOSED TO LIGHT, IT SUPPLIES A DC VOLTAGE TO EQUIPMENT. COVER PV MODULE WITH OPAQUE MATERIAL BEFORE CONNECTING OR DISCONNECTING THIS OPTIMIZER. DURING FAULT, ZERO CURRENT IS SOURCED INTO DC ARRAY BY CONVERTER.

WARNING ELECTRIC SHOCK HAZARD. THE DC CONDUCTORS OF THIS PHOTOVOLTAIC SYSTEM ARE UNGROUNDED AND MAY BE ENERGIZED.

AVERTISSEMENT

RISQUE DE CHOC ELECTRIQUE: QUAND LE CHAMP PHOTOVOLTAIQUE EST EXPOSE A LA LUMIERE, UNE TENSION CC EST FOURNIE A CET EQUIPEMENT. SURFACES CHAUDES: NE PAS TOUCHER. AFIN DE REDUIRE LES RISQUES DE BRULURES LE COURANT DE RETOUR INJECTE PAR LE CONVERTISSEUR EN CAS DE DEFAILLANCE DANS LE MODULE PV EST TOUJOURS NUL.



STRING

MODULE

Sun Rev -40°C

2000V ROHS 02/24/2024 MADE IN USA WD-03547-1 400-1900 FT.

RECT BURTEL BHH/RHW-2



STRING

Do not disconnect
under load

ELECTRIC SHOCK
DANGER
RISQUE DE CHOC
ELECTRIQUE
AVERTISSEMENT
TENSION CC EST
PRESENT
SURFACES CHAUDES:
NE PAS TOUCHER
REDUIRE LES RISQUES
D'INCENDIE
DE RETOUR INJECTE PAR
L'USAGER
CAS DE DEFAILLANCE DANS
L'INSTALLATION
TOUJOURS NUL.

STOP!

RENEE 10R1UG (S. 2MM2) CU (UL) PU WIRE 2000V 90°C DRY OR WET (-40°C) XLPE SUN RES DIRECT-BURIAL RHH-RHW-2

(UL) PU WIRE 2000V 90°C DRY OR WET (-40°C) XLPE SUN RES DIRECT-BURIAL RHH/RHW-2 2000V ROHS 12/08/2023





CAUTION
WARNING
AVERTISSEMENT

SolarEdge Technologies Ltd
Power Optimizer

FC

33

U.S. MAIL













PHOTOVOLTAIC POWER SOURCE

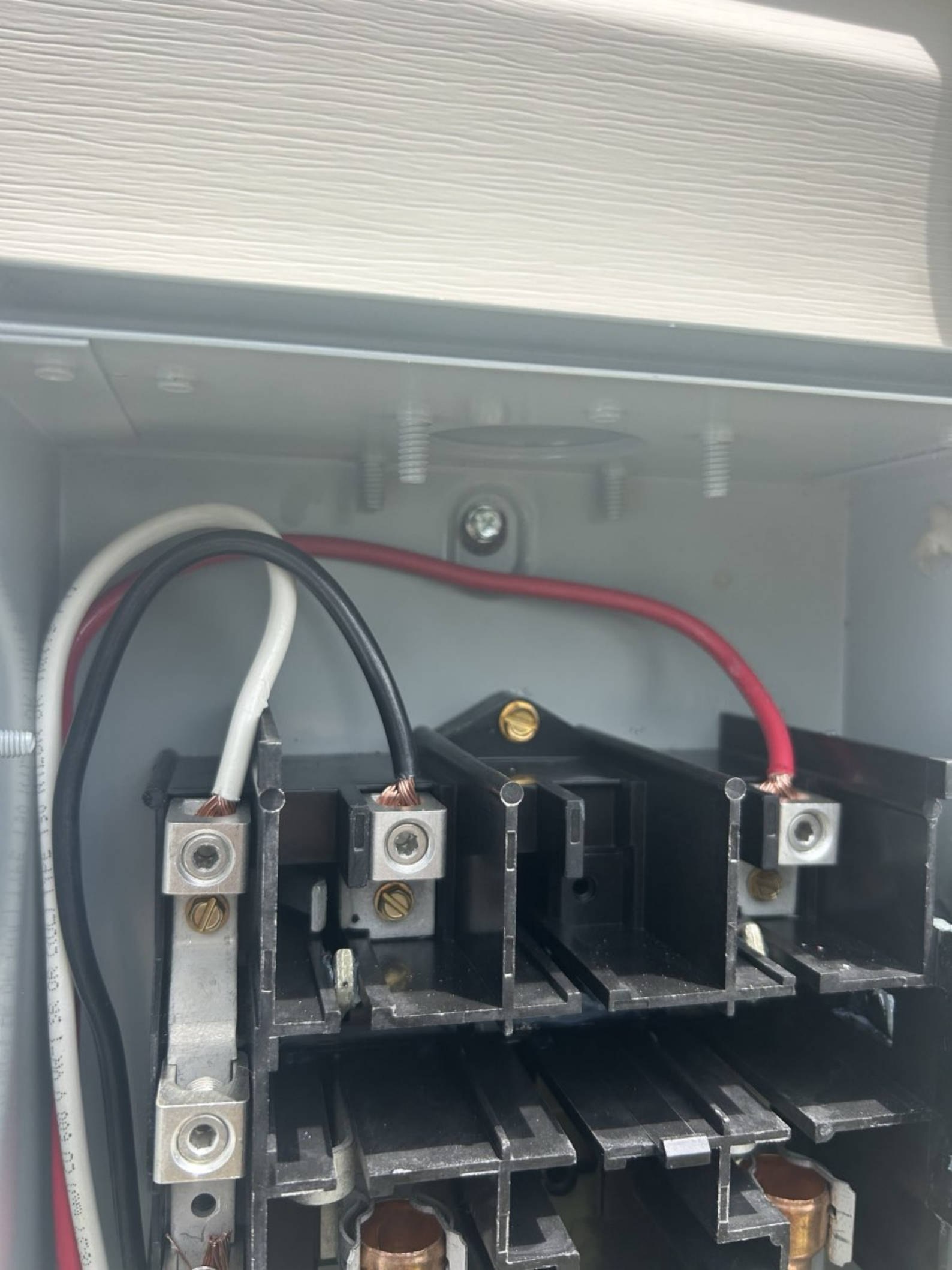




3/4" COVER

3/4"

PHOTON



120VOLT/1A/C POWER SOURCE

LINE

SNAP-IN
2ND

SNAP-IN
2ND

REINSTALL AFTER WIRING

REINSTALE DESPUÉS DEL CABLEADO

REINSTALLER APRÈS L'INSTALLATION ÉLECTRIQUE

INSTALL 1ST

FUSETRA
FRN-6.3

FUSETRA
FRN-6.3

1

1

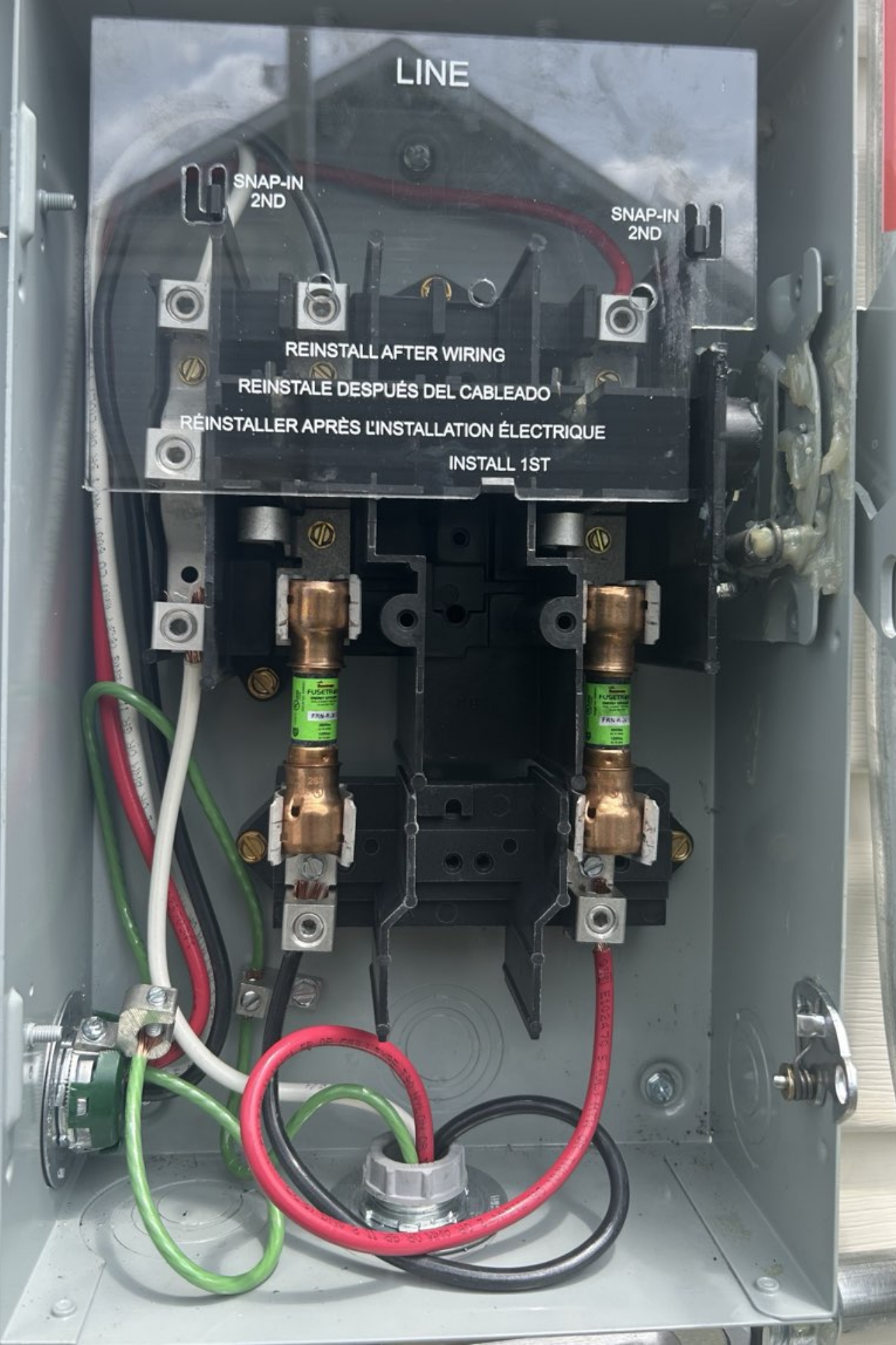
1

1

1

1

1



⚡ DANGER	⚡ PELIGRO	⚡ DANGER
HAZARDOUS VOLTAGE WILL CAUSE SEVERE INJURY OR DEATH	VOLTAJE PELIGROSO PUEDE CAUSAR HERIDAS SEVERAS O LA MUERTE	TENSION DANGEREUSE PEUT CAUSER DES BLESSURES GRAVES OU LA MORT
Never operate switch with cover open.	Nunca opere el interruptor con la cubierta abierta.	Ne jamais manœuvrer l'interrupteur lorsque la couverture est ouverte.
If fused, turn OFF switch before removing or installing fuse.	Si el interruptor está fusible, deje su palanca a la posición "OFF" antes de retirar o instalar fusibles.	Si il est muni d'un fusible, mettez l'interrupteur dans la position "OFF" avant d'enlever ou d'installer un fusible.
Always use a properly rated voltage sensing device at all line and load side fuse clips (if fused) or test fuse terminals (if non-fused) to confirm switch is OFF.	Si el voltaje con un dispositivo de medición adecuado en lado de carga de los clips de fusibles (o los cables con las terminales de carga (cuando no está fusible)) para comprobar que el interruptor está desenergizado.	Toujours utiliser un dispositif de détection de la tension sur les supports respectifs soit à l'arrivée, et le côté charge du porte-fusibles (ou d'un câble) ou les bornes de charge (sans fusible) pour confirmer que l'interrupteur est hors-circuit (OFF).
Turn OFF power ahead of switch before doing any work inside. Replace all parts. Close cover before turning power ON.	Desconectar la alimentación del interruptor antes de trabajar dentro de los mismos. Reemplazar todas las partes. Cerrar la cubierta antes de energizar el interruptor.	Couper l'alimentation en amont de l'interrupteur avant toute intervention. Remplacer les pièces. Fermer la couverture avant de remettre sous tension.

DG222NRB



Series 8
GENERAL DUTY SAFETY SWITCH
Type 2R Enclosure - Rainproof
TERMINALS SUITABLE FOR AL-CU WIRE.
INTERRUPTOR DE SEGURIDAD DE SERVICIO GENERAL
Gabinete NEMA 3R - A Prueba de Lluvia
TERMINALES ADECUADAS PARA CONDUCTORES DE AL-CU.
INTERRUPTEUR DE SÉCURITÉ À USAGE GÉNÉRAL
Enveloppe De Type 2R - À L'Épreuve De La Pluie
BORNES CONVARIANT POUR CONDUCTEURS AL-CU.



UL LISTED
ENCLOSURE SWITCH
INTERRUPTEUR EN GABINET
Série No. AL-72
NOM-367

60 Amperes 120/240, 240, 127/230 V ~ 60Hz 3W S/N, 3H N/S, 3F N/S

Horsepower Ratings	KW (Caballos de potencia)		Régimes "Horsepower"	
	1 Phase/3 Fase	3 Phase/3 Fase *	2 Pole/2 Polo	3 Pole/3 Polo
Volts / Tension / Voltage	Std. / Est.	Max.	Std. / Est.	Max.
120 / 127 ~	1.5 (2.033)	3 (2.238)	3 (2.238)	7.5 (5.50)
240 ~	3 (2.238)	10 (7.46)	7.5 (5.50)	15 (11.19)

*For grounded B phase systems only.
Maximum fuse size 60A.
The starting current of motors of more than the standard horsepower ratings may require the use of fuses with appropriate time-delay characteristics. Continuous load current not to exceed 80% of the rating of fuses employed in other than motor circuits.
Suitable for use on air service equipment.
Suitable for use on a circuit capable of delivering not more than 100,000 RMS symmetrical amperes, 240 V - maximum, when Class R fuses are used. Fuse kit DS26K is required for R fuses.
DANGER - Unless Class R fuses are used, this switch may present a risk of fire and personal injury if installed on circuits capable of delivering more than 10,000 RMS symmetrical amperes.
When used with Class R or H fuses, suitable for use on a circuit capable of delivering not more than 10,000 RMS symmetrical amperes, 240 volts maximum.
Experience has shown that renewable fuses can cause overheating problems and thus the use of renewable fuses is not recommended.
Use 60°C or 75°C wire.
Lug torque / Hex across flats / 5/32" / 100 LB.-in
Wire range
14 - 1/0 AWG, 2.1 to 53.5 mm² AL - CU
Accessories
Instalar por instrucciones supplied with kit.
R Fuse kit DS26K
Ground lug kit DG30GB
Neutral kit DG30NB
3/4" (19.05mm) Hub size DS27SH
1" (25.40mm) Hub size DS25SH
1 1/2" (38.10mm) Hub size DS23SH
2" (50.80mm) Hub size DS20SH
Accessories
Instalar de acuerdo a instrucciones incluidas en los accesorios.
Juego adaptador para fusible tipo "R" DS26K
Juego de partes para terminal de tierra DG30GB
Juego de neutro DG30NB
3/4" (19.05mm) Tamaño de copia DS27SH
1" (25.40mm) Tamaño de copia DS25SH
1 1/2" (38.10mm) Tamaño de copia DS23SH
2" (50.80mm) Tamaño de copia DS20SH
Accessories
Instalar conformemente aux directives fournies avec l'ensemble.
Ensemble pour fusible R DS26K
Ensemble de bornes de MAL DG30GB
Ensemble de neutre DG30NB
3/4" (19.05mm) Calibre des manchons DS27SH
1" (25.40mm) Calibre des manchons DS25SH
1 1/2" (38.10mm) Calibre des manchons DS23SH
2" (50.80mm) Calibre des manchons DS20SH

Inspected by
715432

SNAP-IN 2ND
REINSTALL AFTER WIRING
REINSTATE DESPUÉS DEL CABLEADO
REINSTALLER APRÈS L'INSTALLATION ÉLECTRIQUE
INSTALL 1



2ND

REINSTALL AFTER WIRING

REINSTATE DESPUÉS DEL CABLEADO

RÉINSTALLER APRÈS L'INSTALLATION ÉLECTRIQUE

INSTALL 1ST





General Duty Safety Switch
 Interrupteur de sécurité à usage général
 Interruptor de seguridad de servicio general

60 A, 240 V~, 60 Hz

Complete ratings inside
 Valeurs nominales complètes à l'intérieur
 Información completa de capacidades en el interior

Further instructions inside
 Autres instructions à l'intérieur
 Instrucciones adicionales en el interior

Made in U.S.A. / Fabriqué aux É.-U. / Hecho en E.U.A.

⚠ DANGER
 HAZARDOUS VOLTAGE. WILL CAUSE SEVERE INJURY OR DEATH.
 • Never operate switch with cover open.
 • Turn OFF power ahead of switch before doing any work inside. Tagging is not permitted. Close cover before locking (power ON).

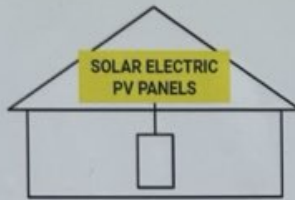
TENSION DANGEREUSE. PEUT CAUSER DES BLESSURES GRAVES OU LA MORT.
 • Ne jamais manœuvrer l'interrupteur lorsque le couvercle est ouvert.
 • Couper l'alimentation en amont de l'interrupteur avant toute intervention. Remplacer les pièces. Fermer le couvercle avant de verrouiller (à l'énergie ON).

⚠ PELIGRO
 VOLTAGE PELIGROSO. PUEDE CAUSAR HERIDAS SEVERAS O LA MUERTE.
 • Nunca opere el interruptor con la cubierta abierta.
 • Desconectar la alimentación que interrumpe antes de trabajar dentro del mismo. Reemplazar todas las partes. Cerrar la cubierta antes de enroscar el interruptor.

30-43300



**SOLAR PV SYSTEM
 EQUIPPED WITH
 RAPID SHUTDOWN**



TURN RAPID SHUTDOWN SWITCH TO THE "OFF" POSITION TO SHUT DOWN PV SYSTEM AND REDUCE SHOCK HAZARD IN THE ARRAY

**RAPID SHUTDOWN
 SWITCH FOR
 SOLAR PV SYSTEM**

⚠ WARNING
 ELECTRIC SHOCK HAZARD

TERMINALS ON THE LINE AND LOAD SIDES MAY BE ENERGIZED IN THE OPEN POSITION

**AC DISCONNECT
 PHOTOVOLTAIC SYSTEM
 POWER SOURCE**

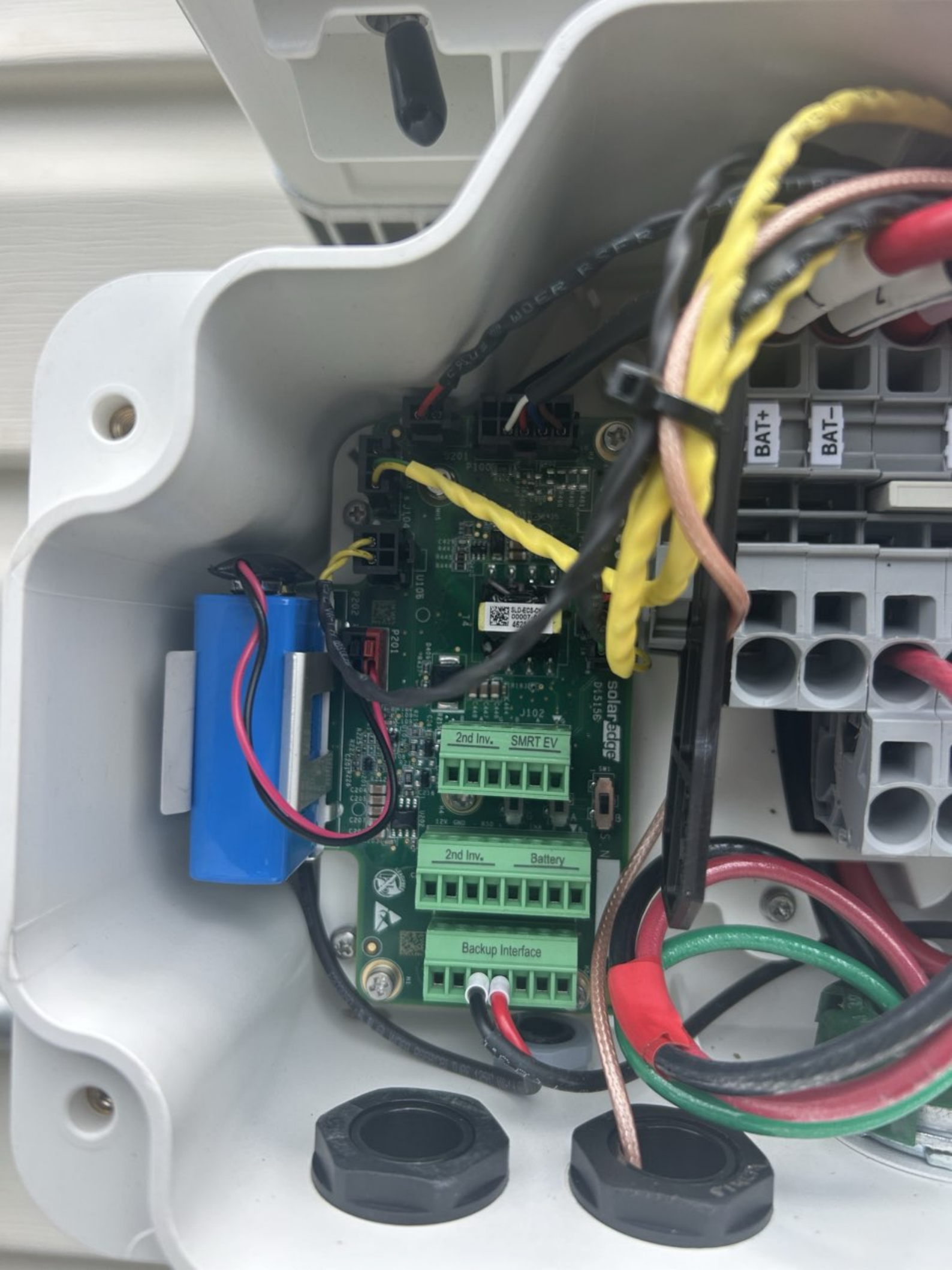
RATED AC OUTPUT CURRENT **24** AMPS
 NOMINAL OPERATING AC VOLTAGE **240** VOLTS

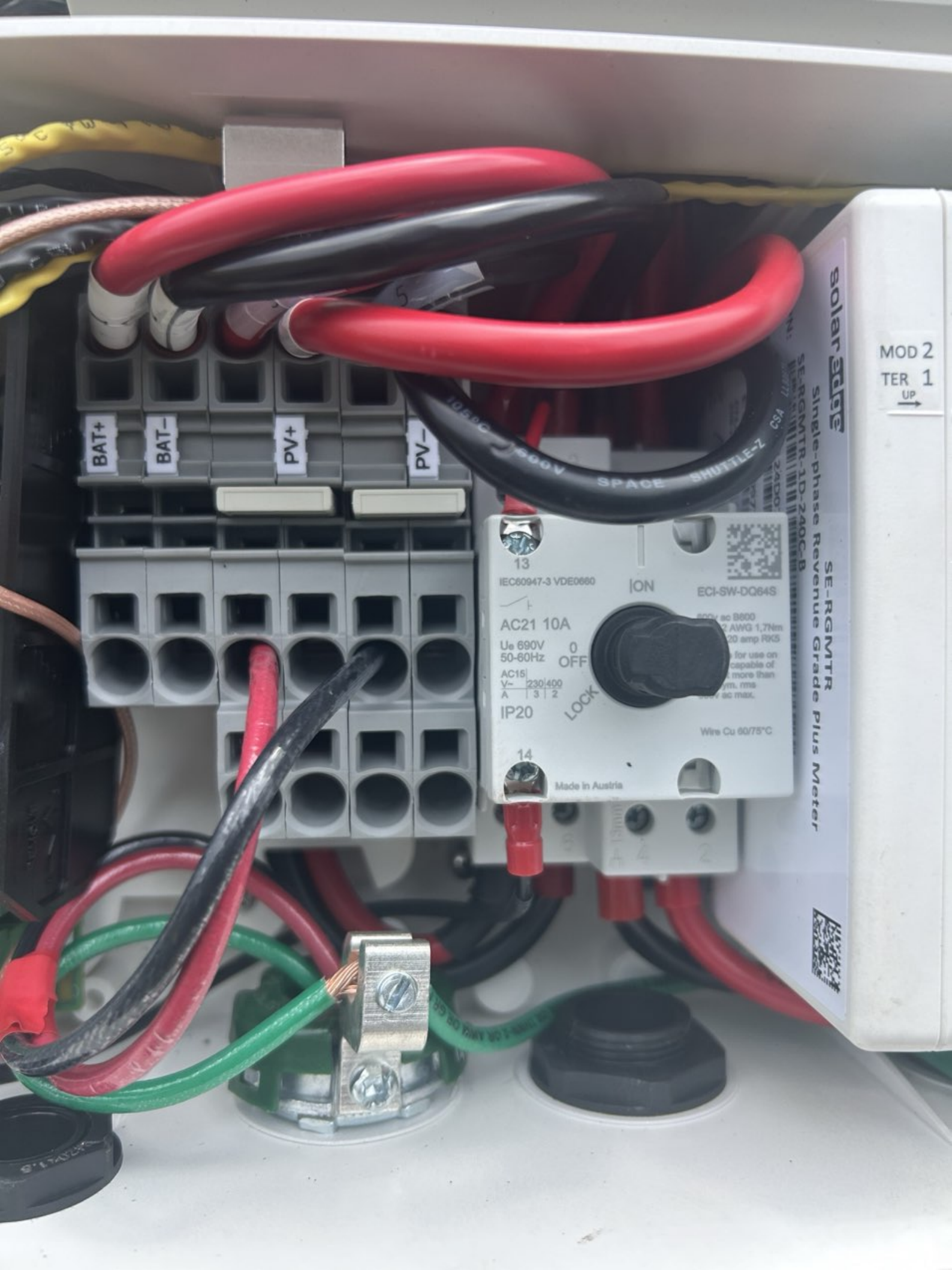
PHOTOVOLTAIC POWER SOURCE

ON

OFF







BAT+ BAT- PV+ PV-

13
IEC60947-3 VDE0660
AC21 10A
Ue 690V
50-60Hz
AC15
V- 230/400
A 3 2
IP20
14
Made in Austria

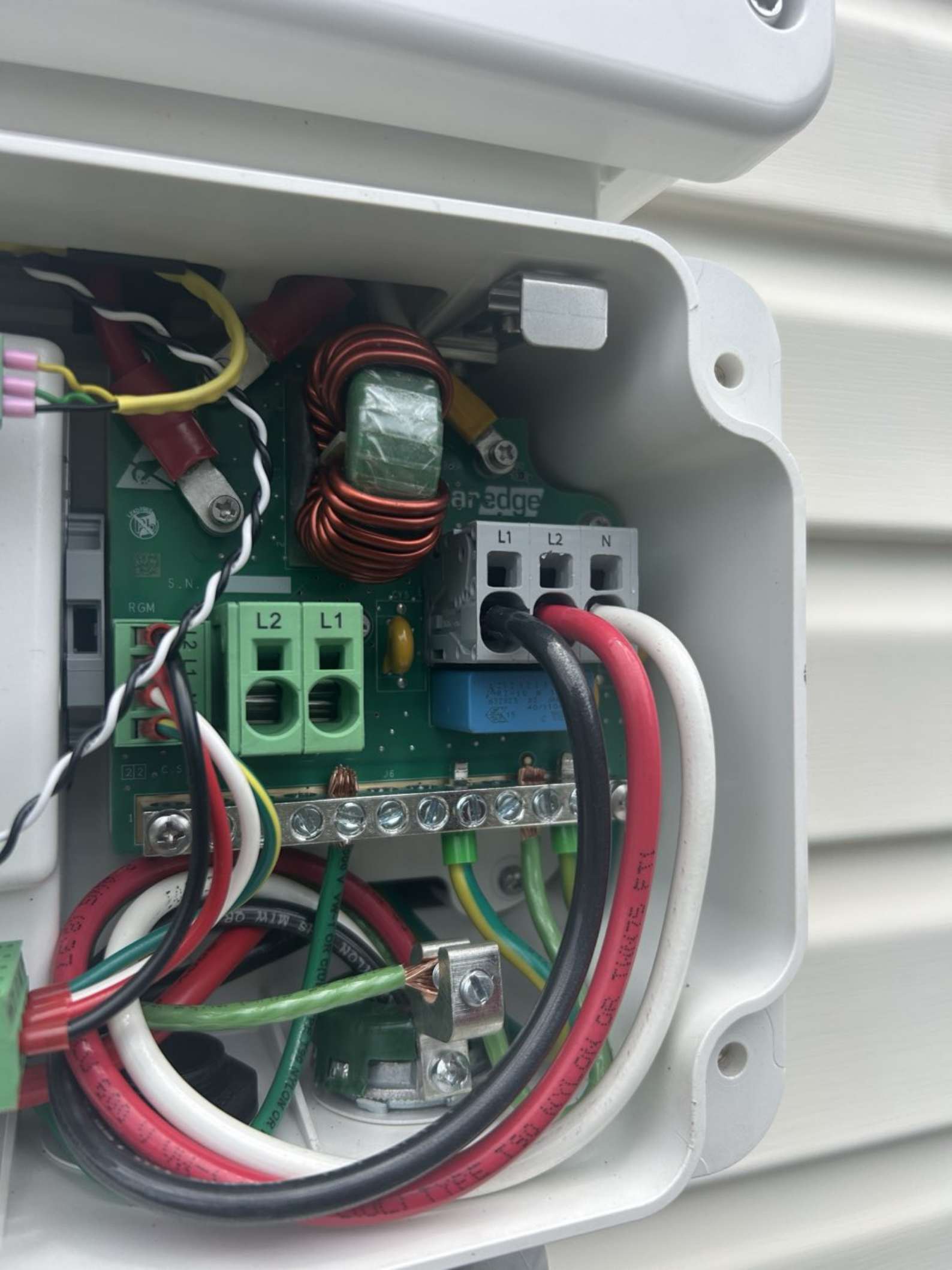
ON
OFF
LOCK

ECI-SW-DQ64S
500V ac B900
2 AWG 1,7Nm
20 amp PK5
for use on
capable of
more than
sym. rms
ac max.

Wire Cu 60/75°C

solar edge
SE-RGMTR-1D-240C-B
Single-phase Revenue Grade Plus Meter
SE-RGMTR
Single-phase Revenue Grade Plus Meter
MOD 2
TER 1
UP





areedge

S.N.

RGM

L2

L1

L1

L2

N

22

J6

150 VOLT TYPE T50

solaredge

StorEdge Connection Unit



Max DC Voltage (PV/Battery)	480 Vdc
Max DC Current (PV)	62 Adc
Max DC Power (PV)	23.2 kWdc
Max Continuous DC Current (Battery)	31 Adc
Max Continuous DC Power (Battery)	11.6 kWdc
Max AC Voltage	264 Vac
AC-Single Phase Frequency	50/60 Hz
Max AC Current (Grid)	48 Aac

For more details refer to the installation guide
Patent marketing notice: see WWW.SOLAREEDGE.COM/patent

DCD-1PH-US-P2H-F-I

PN:

SB1724-191D09495-8A

SN:

MADE IN U.S.A FROM IMPORTED PARTS



Intertek
4004590



solaredge

StorEdge Connection Unit



Max AC Current (Smart EV Charger)	40 Aac
Max Continuous Output Power (Smart EV Charger)	9600 W
Max Battery Energy Storage	32 kWh
Number of AC phases	L1, L2, N
Maximum AC short circuit current	74 Aac
Weight	30.2/ 13.7 lbs/kg
Ambient Temperature:	- 40°C ..60°C
Enclosure Rating:	IP65 / Type 4X

For more details refer to the installation guide
Patent marketing notice: see WWW.SOLAREEDGE.COM/patent
Use 90°C copper PV Wires only.
Revenue Grade ANSI C12.20
PHOTOVOLTAIC RAPID SHUTDOWN SYSTEM

DCD-1PH-US-P2H-F-I

PN:

SB1724-191D09495-8A

SN:

MADE IN U.S.A FROM IMPORTED PARTS



Intertek
4004590



solar edge SE5700H - US
Grid Support Utility Interactive Non - Isolated
Photovoltaic Inverter With Stand - alone Mode

Operating Voltage Range 270 - 480 Vac
 Max Input Current 31 Aac
 Max Continuous Output Power Grid connected 5760Wac @ 240V
 Max Continuous Output Power and Current stand - alone 7.5 KVA 32A
 11.4 KVA 48A
 211 - 240 - 264 Vac
 Max Continuous Output Power and Current stand - alone 183 - 208 - 229 Vac
 11.4 KVA
 24Aac
 Voltage Min - Nom - Max 74 Aac
 0 Aac
 Max Stand - alone Capacity 59.3 - 80.0 - 80.5 Hz
 Max Continuous Output Current Grid Connected +/- 0.85 - 1
 80 C
 Max Output Fault Current 11.4 KVA
 Max Utility Backfeed Current 24Aac
 Frequency Min - Nom - Max 74 Aac
 Output Power Factor 0 Aac
 Max Ambient Temperature 59.3 - 80.0 - 80.5 Hz
 Enclosure +/- 0.85 - 1
 80 C
 IP65/NEMA 4X

With integrated ground fault protection per NEC 690.35 (C)
 Type 1 Photovoltaic Arc - Fault Circuit - Protection
ATTENTION: The maximum operating current of this system may be controlled electronically. Refer to manufacturer's instructions for more information.




Intertek
 4004590

Wi - Fi Password:
 Kp78Arg1
 Activation:
 80E1 a2G1 q8QX 4iB5 KHAK ZUq 7oiw
 WIFI MAC:
 84:D6:C5:A0:50:AA

PN: SE5700H - USMNUBL15
 SN: SB1724 - 07508A52D - 4F



solar edge 

**PHOTOVOLTAIC RAPID
 SHUTDOWN SYSTEM**

solar edge 

**ETL LISTED
 CONFORMS TO
 ANSI/UL 1741
 CERTIFIED TO
 CAN/CSA
 C22.2 NO 107**

Intertek
 4004590

7508A52D-4F

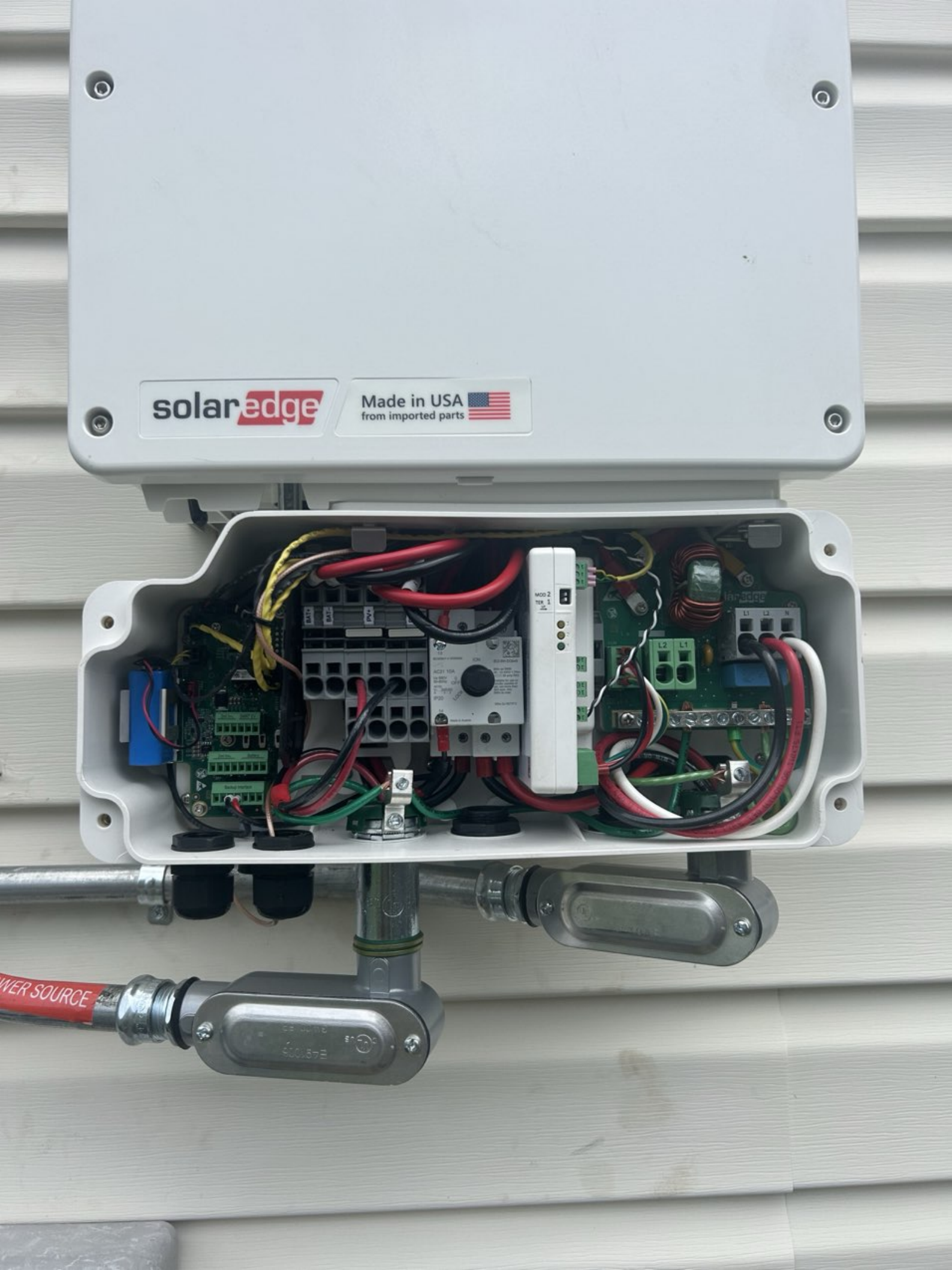


Grid Support Interactive Inverter - CSA C22.3
 No. 9 - Best or "Grid Support Interactive Inverter -
 CSA C22.3 No. 9 - Supplemental.
 Contains FCC ID: 2A0097-PUNK, IC: 20826-PUNK. The enclosed device complies
 with Part 15 of the FCC Rules. Operation is subject to the following two conditions:
 (1) This device may not cause harmful interference.
 (2) This device must accept any interference received,
 including interference that may cause undesired operation.
 For more information visit www.solar-edge.com/groups/patent
 © 2015 SOLAR EDGE. 301 www.solar-edge.com/groups/patent
 MADE IN USA From Imported Parts

solar**edge**

Made in USA 
from imported parts

POWER SOURCE

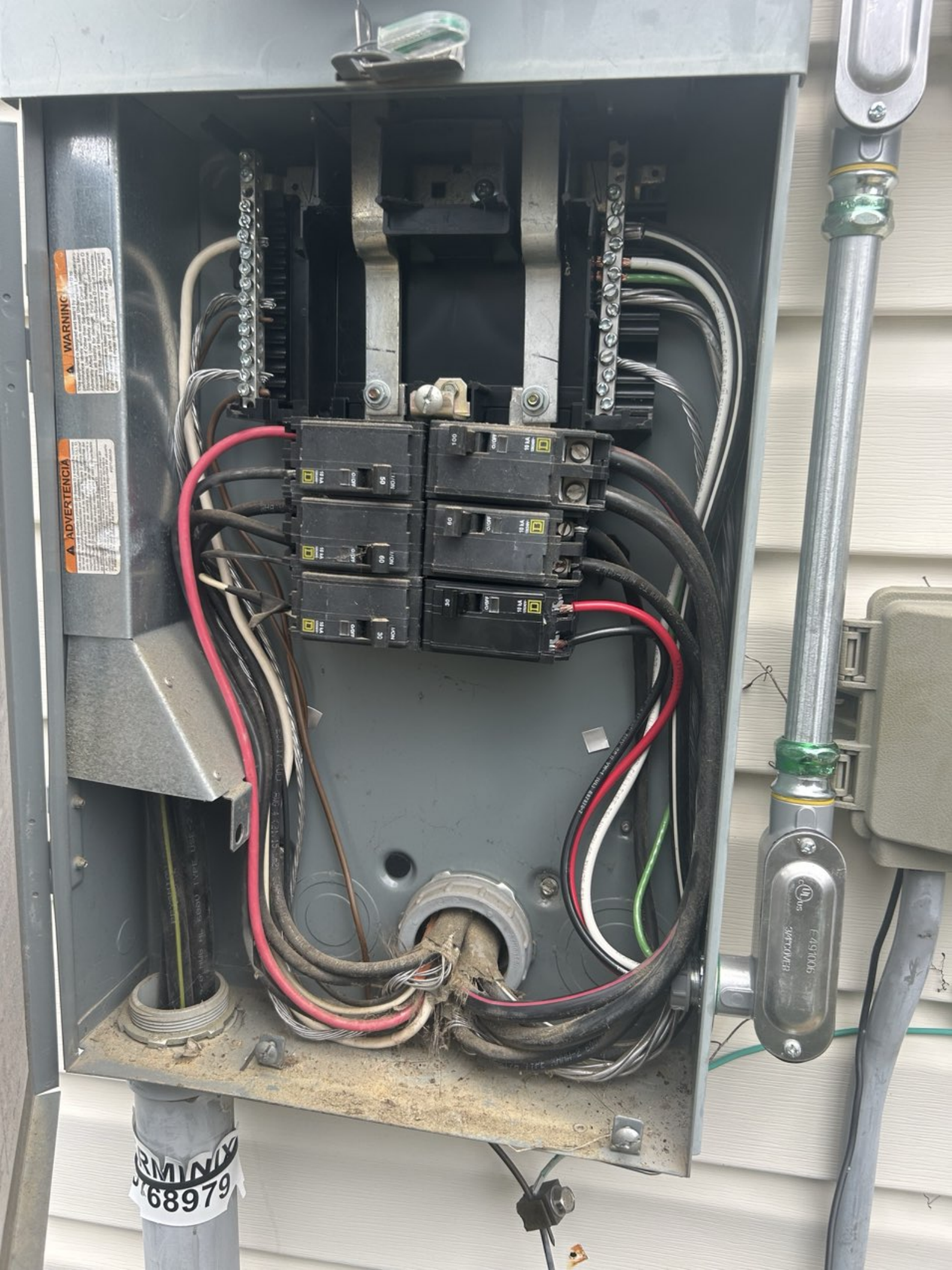


WARNING
This equipment is not to be used in the presence of flammable or explosive atmospheres. For further information, please refer to the technical specifications and the safety instructions.

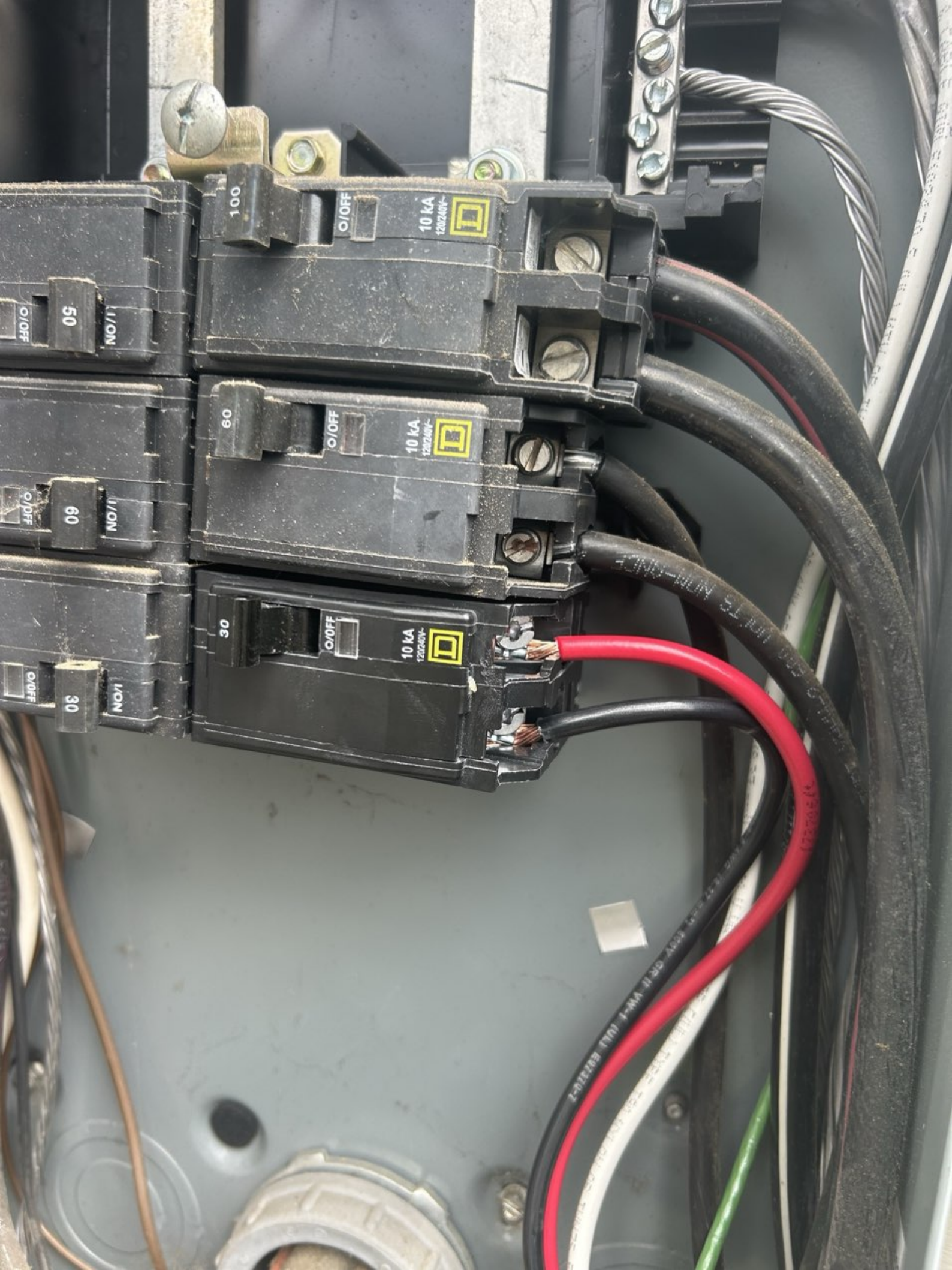
ADVERTENCIA
Este equipo no debe utilizarse en presencia de atmósferas inflamables o explosivas. Para obtener más información, consulte las especificaciones técnicas y las instrucciones de seguridad.

TERMINAL
68979

40ms
E-491005
3497C00018







100

O/OFF

10 kA
120/240V



50

I/ON

O/OFF

60

O/OFF

10 kA
120/240V



60

I/ON

O/OFF

30

O/OFF

10 kA
120/240V



30

I/ON

O/OFF

100TS 100A-100V-1

100TS 100A-100V-1

WARNING
This equipment is not to be used for life support systems or other critical applications. The user must read and understand the instructions and safety warnings before using this equipment. The user must use proper installation and wiring practices. The user must use proper grounding and bonding practices. The user must use proper labeling and marking practices. The user must use proper safety practices. The user must use proper maintenance practices. The user must use proper disposal practices.

ADVERTENCIA
Este equipo no debe ser utilizado para sistemas de soporte vital u otras aplicaciones críticas. El usuario debe leer y comprender las instrucciones y las advertencias de seguridad antes de utilizar este equipo. El usuario debe utilizar prácticas de instalación y cableado adecuadas. El usuario debe utilizar prácticas de aterramiento y conexión a tierra adecuadas. El usuario debe utilizar prácticas de etiquetado y marcado adecuadas. El usuario debe utilizar prácticas de seguridad adecuadas. El usuario debe utilizar prácticas de mantenimiento adecuadas. El usuario debe utilizar prácticas de eliminación adecuadas.

181A 100	181A 100
05 100/1	05 100/1
181A 60	181A 60
09 100/1	09 100/1
181A 30	181A 30
0C 100/1	0C 100/1

TERMINAL
68979

SWITCH



VINILAT N°

60

O/OFF

10 kA
120/240V~



30

O/OFF

10 kA
120/240V~



SOLAR PV BREAKER
BREAKER IS BACKFED
DO NOT RELOCATE

DIRECTORY / DIRECTORIO

2	3	4	5	6	7	8	9	10	11	12	13	14	15	16	17	18	19	20
				Heat														
				Heat														
				Heat														

P.V. SOLAR
P.V. SOLAR

SQUARE D



100 O/OFF 10 kA 12500V

50 O/OFF 10 kA 12500V

60 O/OFF 10 kA 12500V

60 O/OFF 10 kA 12500V

30 O/OFF 10 kA 12500V

SOLAR PV BREAKER
BREAKER IS BACKFED
DO NOT RELOCATE

HAZARD / PELIGRO
SHOCK, EXPLOSION, OR ARC FLASH
PELIGRO DE DESCARGA ELÉCTRICA, EXPLOSIÓN O POR ARQUEO

Always use proper lockout/tagout procedures. See NFPA 70E.
This equipment must only be serviced and repaired by qualified electrical personnel. See NFPA 70E.
Turn off all power supplying this equipment before working on or inside equipment.
Always use proper lockout/tagout procedures.
Replace all electrical doors and covers before leaving all power to any equipment.
Failure to follow these instructions will result in death or serious injury.

Este equipo de protección personal (EPP) eléctrico y los los circuitos de seguridad eléctrica. Consulte los procedimientos de seguridad personal en el NFPA 70E.
Este equipo de protección personal y el equipo de protección personal debe ser utilizado y probado antes de trabajar en este equipo.
Reemplazar todos los paneles eléctricos antes de salir de cualquier equipo.
El incumplimiento de estas precauciones puede causar la muerte o lesiones serias.

DIRECTORY / DIRECTORIO

Orange

100

House

2

4

Sub

Unit

Hent

6

House

up

Parcel

8

Hent

P.V.

SOLAR

under

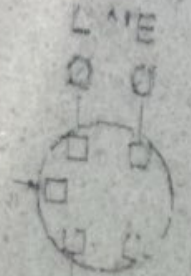
P.V.

SOLAR

12

20

METER MAIN
CATHODE DEVICE
EQUIPMENT



SERIE DE
BARRIDOS LUG



TWO POLE TYPE DO OR DDA (10 - 100A)
TWO POLE TYPE DDC (150 - 200A)
INSTALL NO MORE THAN SIX CIRCUIT
BREAKERS
USE 1/2" - 1/4" AND 3/4" - 1/2" BRANCH
BREAKERS ONLY

A SQUARE D LINE SECTION MAY BE USED AS PART OF A
METER MAIN SECTION. SEE CATALOG PAGE 241 NO. 9 21753

ONLY SQUARE D METER MAINS CAN BE USED IN THIS POSITION

THE METER MAIN IS POSITIONED AT THE END OF THE LINE
AND IS TO BE USED AS A BREAKER. SEE BREAKER
PAGE 180-185



TRIPPED OFF ON
CIRCUIT BREAKER HANDLE POSITIONS
TO BE SET AFTER THE CIRCUIT BREAKER
IS ADJUSTED TO THE ON POSITION
TO BE SET AFTER THE CIRCUIT BREAKER IS
ADJUSTED TO THE ON POSITION

BEFORE THIS IS DONE ONLY AS NEAR AS POSSIBLE
TO THE ON POSITION

DO NOT USE THIS CIRCUIT BREAKER EQUIPPED WITH
A DIFFERENT TYPE OF CIRCUIT BREAKER
OTHER THAN THE ONE SHOWN IN THIS
CIRCUIT

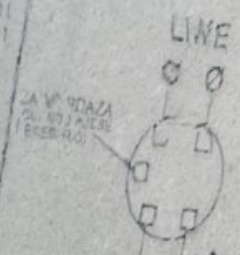
LUG DATA

TYPE	AREA	ODD IN
ON LUG	1.5" DIA	1.5"
OFF LUG	1.5" DIA	1.5"
SERVICE	1.5" DIA	1.5"
GROUND	1.5" DIA	1.5"
LUG	1.5" DIA	1.5"

WIRE RANGE & GROUND

WIRE RANGE	WIRE SIZE	GROUND
15 - 20	1/2"	1/2"
20 - 30	3/4"	3/4"
30 - 40	1"	1"
40 - 50	1 1/4"	1 1/4"
50 - 60	1 1/2"	1 1/2"
60 - 70	2"	2"
70 - 80	2 1/4"	2 1/4"
80 - 90	3"	3"
90 - 100	3 1/2"	3 1/2"

SQUARE D MEDIDOR PRINCIPAL
BASE IN EGAL DE MEDICION PARA ACOMETIDA
EQUIPO COMPRADO POR EL CLIENTE



SERIE DE
BARRIDOS LUG



NO. DE CAT. LOGO
9012L200C
9012L200CH

SERIE
MOI
MOI

DATA A PRUEBA DE LLUVIA TIPC JR
CONDUCTORES PRINCIPALES 405 AMP M (MIMO)
125 240 V - 1PH 3W 50-60 Hz
250V 100% 1PH 3W 50-60Hz
DE UN SISTEMA DE 3 FASES Y 4 HILOS
5 OHMS V.F. MEDIDOR CLASIFICADO A 250
AMP. CON T.M. 100
MAX. 0.17 AMP. PARA CIRCUITO 15 AMP.
1750 V PARA UTILIZACION EN SERVICIO
1/20 O FLS. 00

USO PARA USAR CON LINEAS
DUCTORAS DE 1/2" O. COBRE O
ALUMIN.

VER EL INTERRUPTOR DE CIRCUITO PARA LA
CLASIFICACION DE ALTA TENSION.

PARA DESCOBERTAR TODOS LOS CLADUACIONES
DE CABLE DE LOS CONDUCTORES DE ALIMENTA
CION, COLOCAR LA PALANCA DEL INTERRUPTOR
AUTOMATICO A LA POSICION DE CERRADO Y
AJOSETAR EN LA POSICION DE ABIERTO

TERMINALES DE LINEA ADECUADAS PARA
CABLE NO. 6 AWG a 300 Acmil

RECOMENDACIONES

TODA LAS RECOMENDACIONES DE
UTILIZACION PARA ESTE MEDIDOR DEBEN
SER LEIDAS EN EL MANUAL DEL MEDIDOR
TERMINAR CABLES EN TIERRA DEL EDIFICIO
RECOMENDACIONES DE TIERRA
SEPARADAS PARA EL NO. DE CABLES
SEPARADOS PARA EL NO. DE CABLES

CUANDO SE REQUIERA UN "W" DE JUNTA
QUEDA PARA EL NO. DE CABLES

CUANDO SE REQUIERA JUEGO DE DESAJE DE
BOCINA, SE CARGA DE CABLES
O MUY SEPARADOS

CUANDO SE REQUIERA UN PROTECTOR DE
EL CABLE DE CABLES CILINDRICO, SE
ACEPTA CUALQUIERA DE LAS
CILINDRICA NO. DE CABLES

UTILICE SIEMPRE UN CONECTOR DE
LUG PARA EL CABLE DE CABLES
CONDICION DE CABLES DE CABLES
DEL ANILLO PARTER QUE CONTIENE
CONEXIONES

ACCESORIOS DE ZAPATA DE ALUMIN.

MODELO Y SERIE DEL MEDIDOR
EN EL CABLE DE CABLES
RECOMENDACIONES DE CABLES
CONDICION DE CABLES

PARA PASAR DE CABLES
CON UN CABLE DE CABLES

CLASIFICACION DE CABLES
CONDICION DE CABLES

CONDICION DE CABLES
CONDICION DE CABLES

CONDICION DE CABLES
CONDICION DE CABLES

CONDICION DE CABLES
CONDICION DE CABLES

CONDICION DE CABLES
CONDICION DE CABLES

CONDICION DE CABLES
CONDICION DE CABLES

CONDICION DE CABLES
CONDICION DE CABLES

CONDICION DE CABLES
CONDICION DE CABLES

CONDICION DE CABLES
CONDICION DE CABLES


CONDICION DE CABLES
CONDICION DE CABLES

CONDICION DE CABLES
CONDICION DE CABLES

ELECTRIC SYSTEM
PHOTOVOLTAIC
SYSTEM kWh METER

 **CAUTION** 
SOLAR ELECTRIC SYSTEM CONNECTED

**RAPID SHUTDOWN
SWITCH FOR
SOLAR PV SYSTEM**

 **WARNING**
POWER SOURCE
OUTPUT CONNECTION
DO NOT RELOCATE THIS
OVERCURRENT DEVICE

RELEASE LATCH
MOVE DOOR DOWN
✓ OPEN DOOR

↑ CLOSE DOOR
LIFT DOOR UP
ENGAGE LATCH

SOLAR POINT OF INTERCONNECTION

TERMINAL
68979

CAUTION
SOLAR ELECTRIC SYSTEM CONNECTED

WARNING
DUAL POWER SUPPLY
SOURCE: UTILITY GRID
AND PV SOLAR
ELECTRIC SYSTEM

PHOTOVOLTAIC
SYSTEM kWh METER

CAUTION
SOLAR ELECTRIC SYSTEM CONNECTED

**RAPID SHUTDOWN
SWITCH FOR
SOLAR PV SYSTEM**

WARNING
POWER SOURCE
OUTPUT CONNECTION
DO NOT RELOCATE THIS
EQUIPMENT DEVICE

SOLAR POINT OF INTERCONNECTION

EATON

SOLAR PV SYSTEM
EQUIPPED WITH
RAPID SHUTDOWN

**RAPID SHUTDOWN
SWITCH FOR
SOLAR PV SYSTEM**

WARNING
ELECTRIC SHOCK HAZARD
TERMINALS ON THE LINE AND
LOAD SIDES MAY BE ENERGIZED
IN THE OPEN POSITION

AC DISCONNECT
PHOTOVOLTAIC SYSTEM
POWER SOURCE

SYSTEMS
ELECTRIC SHOCK HAZARD
AC POWER

TERMINAL
0768979

PHOTOVOLTAIC POWER

PHOTOVOLTAIC POWER SOURCE

 **CAUTION** 
SOLAR ELECTRIC SYSTEM CONNECTED

CONTAINS IEC 61010-1 TYPE 1 EQUIPMENT CONTAINS IEC 62368-1 CLASS 2 EQUIPMENT
Landis+Gyr **GRIDSTREAM RF** 90BACBES

00000000

Type: **FOCUS AXRe-SD**
FORM 2S CL200 240V 3W 60Hz TA=30 Kh 7.2

CENTRAL EMC

166 418 460
934
0421
Landis+Gyr

 **WARNING**
DUAL POWER SUPPLY
SOURCES: UTILITY GRID
AND PV SOLAR
ELECTRIC SYSTEM

**PHOTOVOLTAIC
SYSTEM kWh METER**

 **CAUTION** 
SOLAR ELECTRIC SYSTEM CONNECTED



Vertical metal pipe running up the side of the house.

Electrical meter and several electrical boxes mounted on the wall.

Goodman air conditioning unit.

Satellite dish with "dish" logo.

Another Goodman air conditioning unit.

PHOTOVOLTAIC POWER SOURCE





PHOTOVOLTAIC POWER SOURCE





solar**edge**

Made in USA 
from imported parts 

DC DISCONNECT

ON

OFF



DANGER
DO NOT OPERATE
THIS LOCK/TAG MAY ONLY BE REMOVED BY:
NAME: TOPTIER
DEPT: _____
EXPECTED COMPLETION: _____
www.accufarm.com • reorder# TAR125

solar**edge**

RCE



PHOTOVOLTAIC POWER SOURCE

3/4" SOUTHWEST



PHOTOVOLTAIC POWER SOURCE





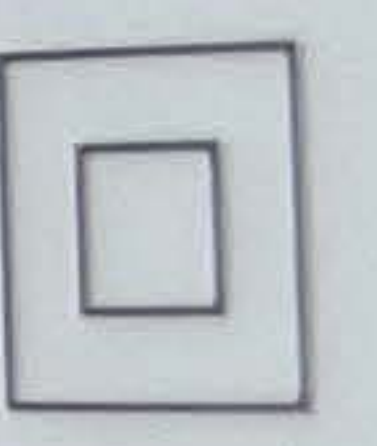




Jinko Solar Co., Ltd.
 No.1, Yingbin Road, Economic Development Zone,
 Shangrao City, 334100 Jiangxi, P.R. China
 www.jinkosolar.com

PHOTOVOLTAIC MODULE
 Modules assembled in the USA from solar cells made in Vietnam

Solar Module Type	: JKM390M-72HBL-V
Maximum Power (Pmax)	390W ±3%
Power Tolerance	39.64V
Maximum Power Voltage (Vmp)	9.84A
Maximum Power Current (Imp)	48.60V ±3%
Open Circuit Voltage (Voc)	10.46A ±4%
Short Circuit Current (Isc)	1500VDC
Maximum System Voltage	20A
Maximum Overcurrent Protection Rating	0~ +3%
Power Sorting	II
Protection Class	Type 1 (UL1703)/Class C (IEC61730)
Fire Class	22.5(kg)
Weight	2008 × 1002 × 40 (mm)
Dimension	1000W/m ² , AM1.5, 25°C
STC	11
Current Sorting	



Fire Type: See installation instructions for installation requirement to achieve a specified system fire class rating with this product.
 For field connections, use 12 AWG Cu wire only, insulated for a minimum of 90°C.

WARNING

- ONLY qualified personnel should install or perform maintenance work on these modules
- BE AWARE of dangerous high DC voltage when connecting modules
- DO NOT damage or scratch the rear surface of the module
- SEE module literature for appropriate mating connectors
- DO NOT disconnect the cables or connectors under load



AVERTISSEMENT

- SEUL les professionnels peuvent installer et maintenir les éléments
- PRENDRE GARDE de la haute tension continue lorsque les éléments sont connectés
- IL EST interdit d'endommager ou d'érafler l'envers des éléments
- VOIR les infos modules pour les connecteurs de raccordement appropriés
- Ne déconnectez pas le câble ou le connecteur sous charge
- Pour les raccords sur le terrain, n'utiliser un câble isolé en cuivre de 12 AWG avec un minimum de 90°C.