

IQ Combiner 5

Photovoltaic
Combiner Box
X-IQ-AM1-240-5



Scan for QIG

Electrical ratings

Voltage 240V ~, 60Hz
DG Breakers 80A MAX (combined)
DG Inputs 64A MAX (combined)
Output 65A MAX, 90A MAX feeder OCPD
Temperature 46°C MAX ambient

NOM



IQ GATEWAY COMB
FCC ID: W32-WG7
IC ID: 10482A-WG7
CTRL BOARD COMB
FCC ID: MCG-XBE
IC ID: 1046A-XBEE

202418012494

P/N:

S/N: 202418012494

883-00358 48

**Dedicated solar and DG Combiner Box - do not add loads
10 AMP or 15 AMP IQ Gateway Breaker not used for backfeed**

| Connection | Wire sizes | Torque |
|--|------------|---------------------|
| DG Breaker (1, 2, 3, 4) | 14-10 AWG | 2.2 Nm (20 lb-in) |
| | 8 AWG | 2.8 Nm (25 lb-in) |
| 60A Circuit Breaker only | 6-4 AWG | 3.0 Nm (27 lb-in) |
| | 4-1/0 AWG | 5.0 Nm (45 lb-in) |
| IQ Gateway Breaker (5) IQ Gateway Power Terminals | 14-10 AWG | 2.26 Nm (20 lb-in) |
| | 14-10 AWG | 1.4 Nm (12.4 lb-in) |
| Neutral and ground | 2-1/0 AWG | 5.6 Nm (50 lb-in) |
| | 14-3 AWG | 5.1 Nm (45 lb-in) |
| Main lug | 6 AWG | 3.6 Nm (32 lb-in) |
| | 8 AWG | 2.6 Nm (23 lb-in) |
| | 10-14 AWG | 2.3 Nm (20 lb-in) |
| CTRL | 10-4 AWG | 5.0 Nm (45 lb-in) |
| | 3-2/0 AWG | 5.6 Nm (50 lb-in) |
| | 18 AWG | 0.2 Nm (1.77 lb-in) |
| | 18 AWG | 0.2 Nm (1.77 lb-in) |



25

TYPE HOM
10 kA
120/240V

COMMON TRIP

DP-4075

20

TYPE HOM
10 kA
120/240V

DP-4075

30

28

26

24



Eaton
No. 1
ELECTRICAL EQUIPMENT

| Model | Capacity | Dimensions | Weight | Material | Finish | Notes |
|------------|----------|----------------|--------|----------|--------|----------|
| Model 100 | 100 | 100x100x100 | 100 | Aluminum | Black | Standard |
| Model 200 | 200 | 200x200x200 | 200 | Aluminum | Black | Standard |
| Model 300 | 300 | 300x300x300 | 300 | Aluminum | Black | Standard |
| Model 400 | 400 | 400x400x400 | 400 | Aluminum | Black | Standard |
| Model 500 | 500 | 500x500x500 | 500 | Aluminum | Black | Standard |
| Model 600 | 600 | 600x600x600 | 600 | Aluminum | Black | Standard |
| Model 700 | 700 | 700x700x700 | 700 | Aluminum | Black | Standard |
| Model 800 | 800 | 800x800x800 | 800 | Aluminum | Black | Standard |
| Model 900 | 900 | 900x900x900 | 900 | Aluminum | Black | Standard |
| Model 1000 | 1000 | 1000x1000x1000 | 1000 | Aluminum | Black | Standard |



SOLAR PV SYSTEM EQUIPPED WITH RAPID SHUTDOWN

THIS RATED SHUTDOWN SWITCH IS THE MOST PROBABLE MULTIPLE-FUNCTION AND PROTECTS AGAINST FIRE HAZARD IN THE AREA

CAUTION
MULTIPLE SOURCES OF ENERGY
POWER TO THE PANELS CAN BE
OBTAINED FROM THE GRID OR FROM
SOLAR PANELS. TO AVOID DAMAGE TO
EQUIPMENT, ALWAYS USE THE MAIN
CIRCUIT BREAKER TO DISCONNECT
THE SYSTEM FROM THE GRID.

WARNING
DUAL POWER SUPPLY
SOURCE: UTILITY GRID AND
PHOTOVOLTAIC SYSTEM

NOTICE
PHOTOVOLTAIC SYSTEM
ELECTRICAL SAFETY
BLUE RAVEN SOLAR
3000 377-4480



**SOLAR PV SYSTEM EQUIPPED
WITH RAPID SHUTDOWN**
When solar panels are
energized, they can
generate up to 300V
AC. This voltage can
be lethal. Always use
proper safety procedures
when working on the
system.



CAUTION
When working on the
system, always use
proper safety procedures
to avoid injury or
death.



ENPHASE

PROFESSOR, ENGINEER, TECHNICIAN
OR COMMERCIAL TRAVELER

WARNING

**AUTHORIZED
PERSONNEL ONLY**

DO NOT ATTEMPT TO
REPAIR OR REPLACE
ANY PARTS OF THIS
EQUIPMENT WITHOUT
PROPER TRAINING



100 Series Box - M
Approved Cable Only (Cat 5e/6)



04282 CH 20071 04000
240 Boston Ave W
Boston MA 02108





 **ENPHASE**
PHOTOVOLTAIC SYSTEM
WARNING
ALL WORK MUST BE
PERFORMED ONLY
BY A LICENSED ELECTRICIAN
© 2014 ENPHASE

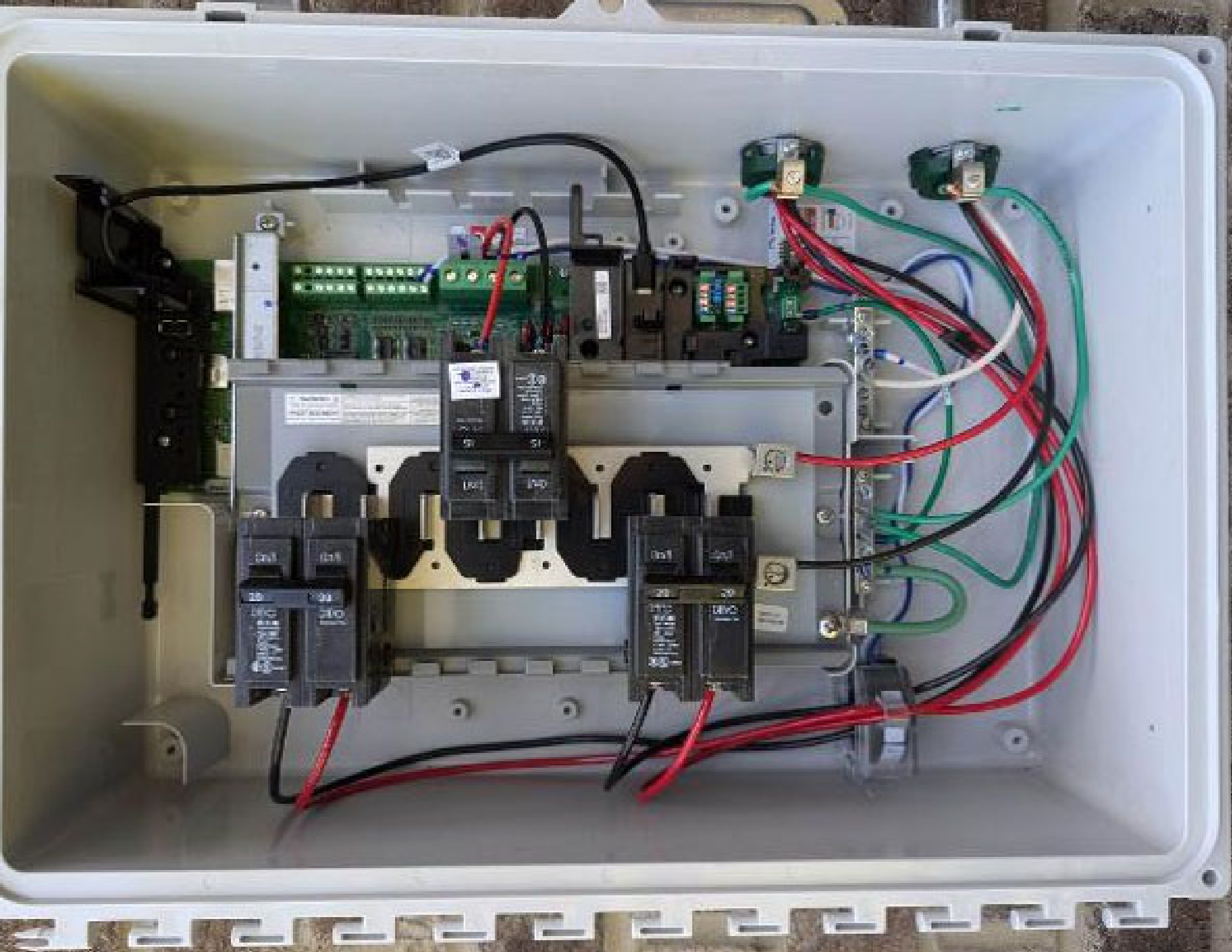
PHOTOVOLTAIC SYSTEM
NO DISCONNECT
WARNING
Rapid Shutdown Switch for Solar PV System
WARNING



265 Wagon Run, W
Spring Lake, NC 28380

100
1000000

100
1000000



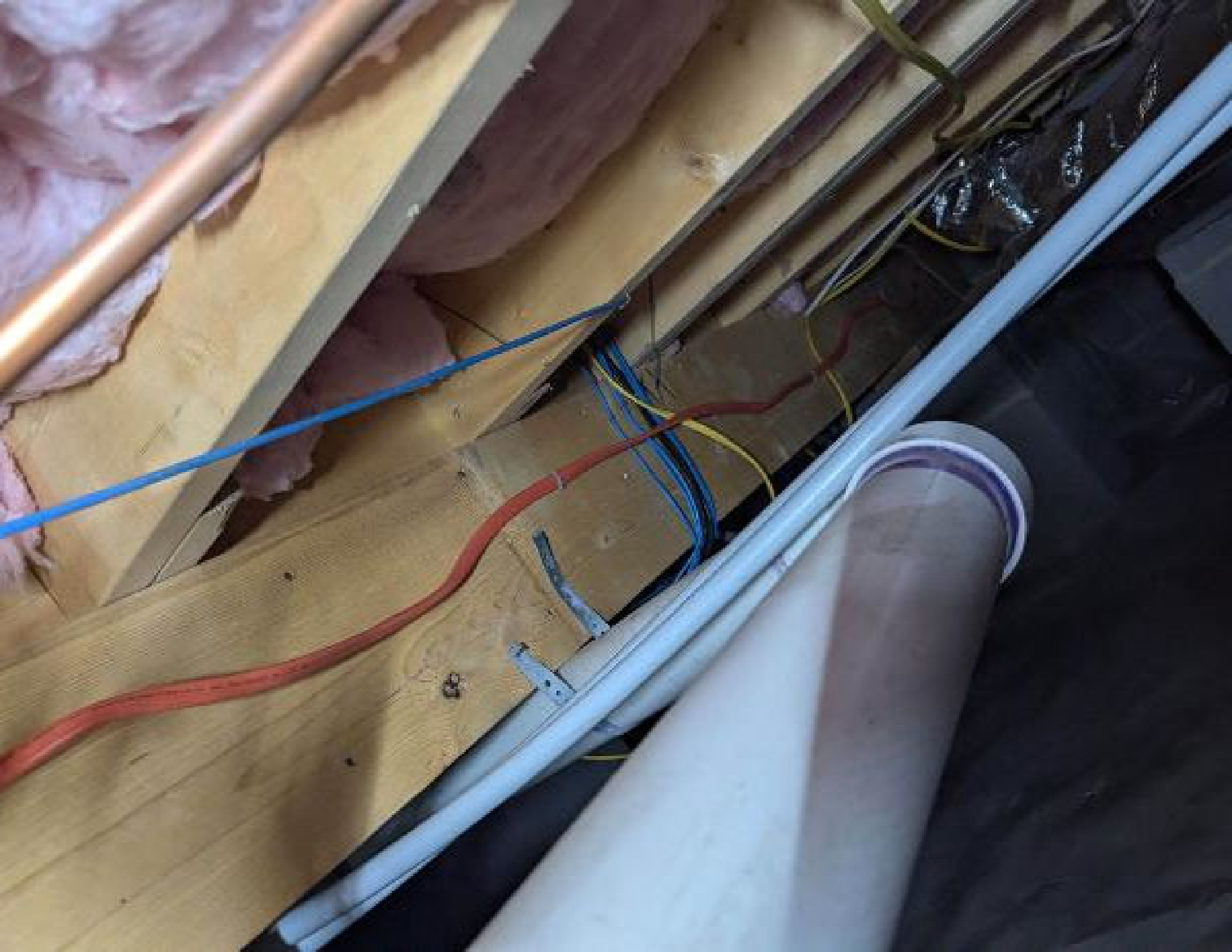


UL LISTED
UL 100
UL 100
UL 100



Wiring diagram or label with illegible text.

































IP TECHSHIELD



LP TACK SHEET





10/10/2018 10:00 AM
10/10/2018 10:00 AM
10/10/2018 10:00 AM



265 Wagon Run, W
Spring Lake, NC 28380

100
1000000

100
1000000



















UNIRAC SFM INFINITY RACKING

FOR RESIDENTIAL AND COMMERCIAL SOLAR SYSTEMS

UNIRAC, 4400553

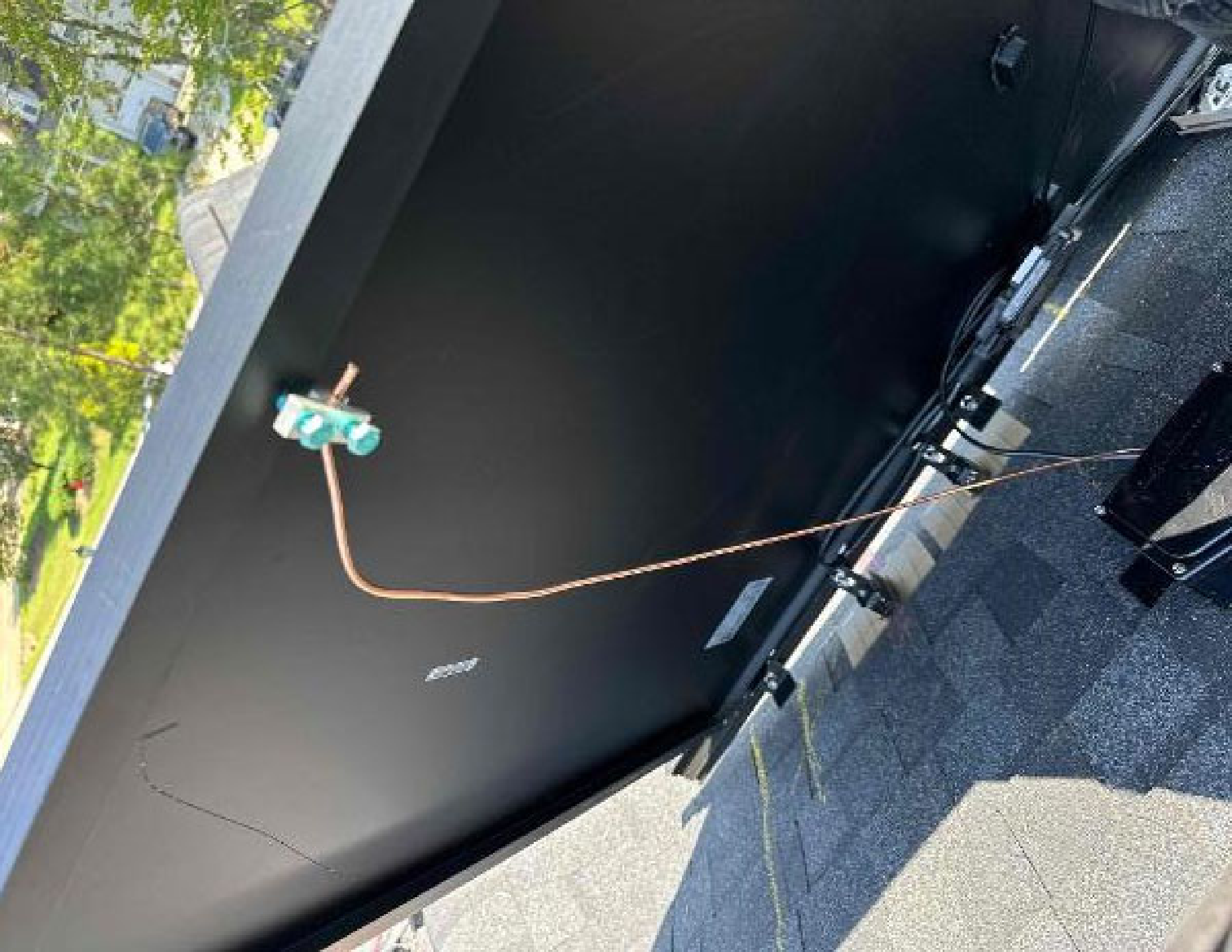


073

840-00388-16
250VAC 20A
+79°C 2210













| Module Type | 550-410-840-1W |
|--|----------------|
| Rated Maximum Power (P _{max}) | 410W |
| Power Tolerance | ±0.4% |
| Current at P _{max} (I _{mp}) | 13.37A |
| Voltage at P _{max} (V _{mp}) | 31.05V |
| Short-Circuit Current | 13.80A |
| Open-Circuit Voltage(V _{oc}) | 37.20V |
| Power Production Tolerance | ±0% |
| Short-circuit Current Tolerance | ±0% |
| Open-circuit Voltage Tolerance | ±0% |

| | |
|----------------------------|----------------|
| Weight | 21.9kg |
| Dimension | 1922x1134x30mm |
| Maximum System Voltage | 1500V |
| Maximum Series Fuse Rating | 25A |
| Cell Technology | Monocr |
| Module Fire Performance | Type 1 |

All technical data measured at STC (1000W/m², 25°C, AM1.5, 28%)
by Institute Characterisation GmbH



SEGSolar Inc.

Address: 10715 Fegen Road, Houston TX 77036, USA

System for: Glass Bidding. See installation manual. Made in Thailand
www.segsolar.com



