



SU919 #111
143 Decay spread PI
L, Lington NC 27546
S1-10 8-2-24
S2-11

MAX DC RATING: 60V / 100A
MAX AC RATING: 120V / 100A
ALLOWABLE WFT: 1/2" / 1/4"
AMBIENT OPERATING TEMP: 0°C / 32°C

WARNING ⚠
RISK OF ELECTRICAL SHOCK OR FIRE. ALWAYS DISCONNECT ALL POWER SOURCES AND VERIFY VOLTAGE IS ZERO BEFORE WORKING ON THE EQUIPMENT.
REFER TO INSTALLATION MANUAL VOLUME 200 FOR MORE INFORMATION.
TORQUE FOR ALL SCREWS & BOLTS: 15-20 LBS-FT
CONFORMS TO UL STANDARD 741



NEMA 3R











S

© 2014 SunPower Corporation
All rights reserved.
SunPower Corporation
16500 E. Alameda Ave., Suite 300
Denver, CO 80231
www.sunpowercorp.com















12











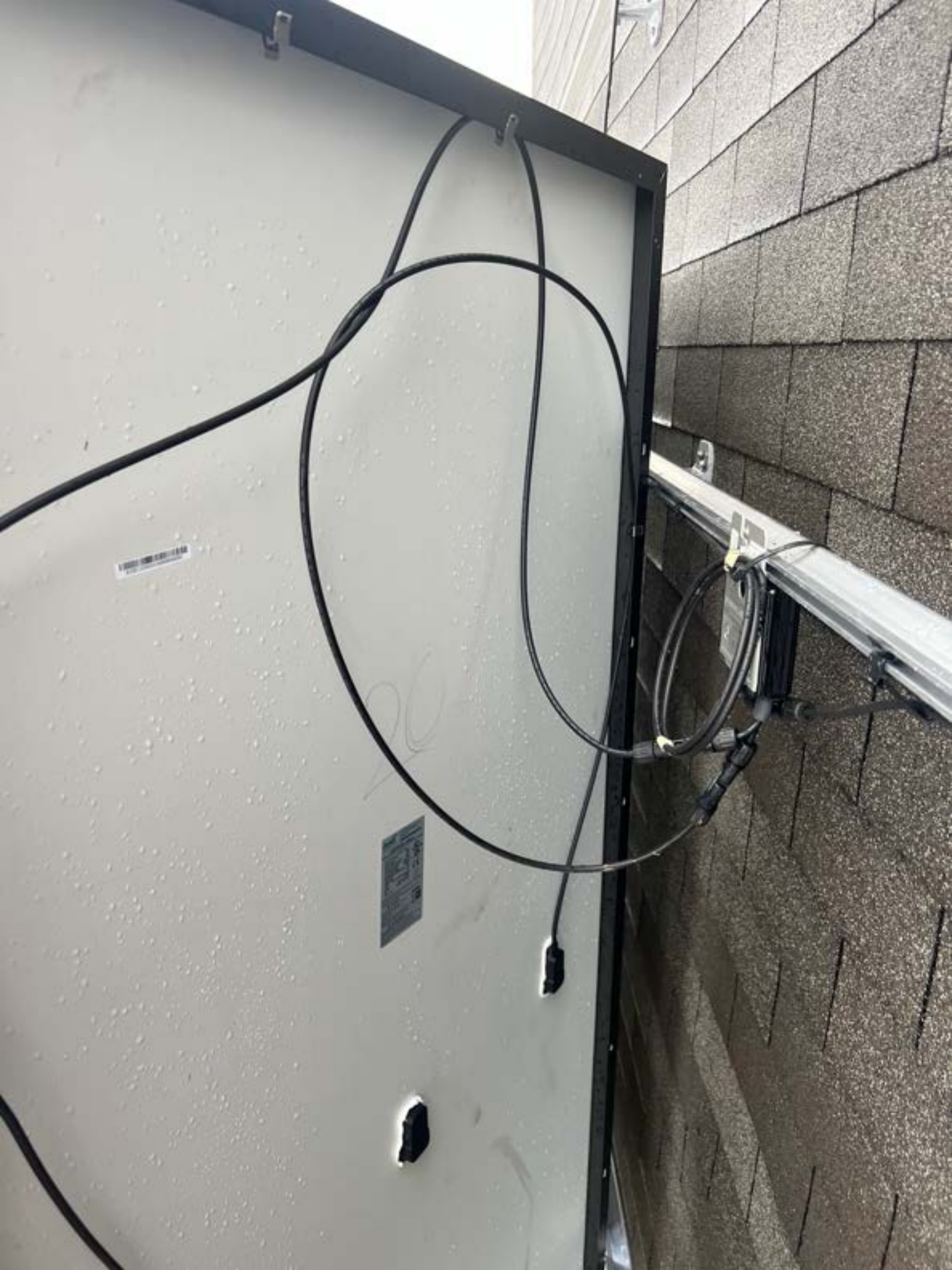






Label with technical specifications and logos, including a circular logo with a stylized 'S' and 'D'.

Handwritten signature or initials in blue ink.





1. Turn the power switch to the "ON" position.
2. The fan will start to rotate and the air will be blown out of the vent.
3. The fan will stop rotating and the air will stop being blown out of the vent.
4. The fan will start to rotate again and the air will be blown out of the vent.
5. The fan will stop rotating and the air will stop being blown out of the vent.
6. The fan will start to rotate again and the air will be blown out of the vent.
7. The fan will stop rotating and the air will stop being blown out of the vent.
8. The fan will start to rotate again and the air will be blown out of the vent.
9. The fan will stop rotating and the air will stop being blown out of the vent.
10. The fan will start to rotate again and the air will be blown out of the vent.

1. Turn the power switch to the "ON" position.
2. The fan will start to rotate and the air will be blown out of the vent.
3. The fan will stop rotating and the air will stop being blown out of the vent.
4. The fan will start to rotate again and the air will be blown out of the vent.
5. The fan will stop rotating and the air will stop being blown out of the vent.
6. The fan will start to rotate again and the air will be blown out of the vent.
7. The fan will stop rotating and the air will stop being blown out of the vent.
8. The fan will start to rotate again and the air will be blown out of the vent.
9. The fan will stop rotating and the air will stop being blown out of the vent.
10. The fan will start to rotate again and the air will be blown out of the vent.















Do Not Remove



Life Technologies Ltd
Power Optimizer
Life Technologies GmbH
Ammer-Stein-Strasse 6/81829
Leuch/germany



CAUTION

HOT SURFACES TO REDUCE THE RISK OF BURNS DO NOT TOUCH PHOTOVOLTAIC ARRAY WHEN THE LIGHT IT SUPPLIES A DC VOLTAGE TO EQUIPMENT. COVER PV MODULE WITH OPAQUE MATERIAL BEFORE CONNECTING ON DURING FAULT, ZERO CURRENT IS SOURCED

WARNING

ELECTRIC SHOCK RISK. PHOTOVOLTAIC SYSTEMS ARE UNGROUNDING AND E



AVERTISSEMENT
RISQUE DE CHOC PHOTOVOLTAIC TENSION CC ELÉCTRIQUE SURFACES CHAUDES
REDUIRE LES RISQUES DE RETOUR INJECTE EN CAS DE DÉFAILLANCE TOUJOURS RUIE

AVERTISSEMENT

QUAND LE CHAMP PHOTOVOLTAIC A LA LUMIERE, UNE TENSION CC ÉLECTRIQUE ÉQUIPEMENT
REDUIRE LES RISQUES DE RETOUR INJECTE EN CAS DE DÉFAILLANCE TOUJOURS RUIE



DO NOT TOUCH THE DC CONDUCTORS OF THIS PHOTOVOLTAIC SYSTEM



CAUTION
WARNING
AVERTISSEMENT
ATTENTION























RENEWABLES™ BY REMEE 10RW6 (5.3MM²) CU (UL) PU WIRE 2000U







Do not disconnect
under load

STOP

2000V SUN RES -40°C

VW-1





3006
48802 24117 PD (70) 07
5.3MM 5.3
SMA



DIRECT BURIED RHH-RHM-2 2000V RUS 02/24/2024 MADE IN USA W0-035417



BURIAL RHH/RHII-2







QR Code

Be Safe Network

FC

CAUTION
Warning text in English and French regarding safety and use of the device.

WARNING
Warning text in English and French regarding safety and use of the device.

AVERTISSEMENT
Warning text in French regarding safety and use of the device.











solar **edge**

StorEdge Connection Unit



Max DC Voltage (PV/Battery)	480 Vdc
Max DC Current (PV)	62 Adc
Max DC Power (PV)	23.2 kWdc
Max Continuous DC Current (Battery)	31 Adc
Max Continuous DC Power (Battery)	11.6 kWdc
Max AC Voltage	264 Vac
AC Single Phase Frequency	50/60 Hz
Max AC Current (Grid)	48 Aac

For more details refer to the installation guide
Patent marketing notice: see WWW.SOLAREEDGE.COM/patent

DCD-1PH-US-P2H-F-I

PN:

SB1824-191D09996-90

SN:

MADE IN U.S.A FROM IMPORTED PARTS



Intertek
4004590



solar **edge**

StorEdge Connection Unit



Max AC Current (Smart EV Charger)	40 Aac
Max Continuous Output Power (Smart EV Charger)	9600 W
Max Battery Energy Storage	32 kWh
Number of AC phases	L1, L2, N
Maximum AC short circuit current	74 Aac
Weight	30.2 / 13.7 lbs/kg
Ambient Temperature:	-40°C ..60°C
Enclosure Rating:	IP65 / Type 4X

For more details refer to the installation guide
Patent marketing notice: see WWW.SOLAREEDGE.COM/patent
Use 90°C copper PV Wires only.
Revenue Grade ANSI C12.20
PHOTOVOLTAIC RAPID SHUTDOWN SYSTEM

DCD-1PH-US-P2H-F-I

PN:

SB1824-191D09996-90

SN:

MADE IN U.S.A FROM IMPORTED PARTS



Intertek
4004590



solar edge SE7600H — US
Grid Support Utility Interactive Non-Isolated
Photovoltaic Inverter With Stand — Mono Mode

Operating Voltage Range 270 – 600 Vdc
 Max Input Current 21 Adc
 Max Continuous Output Power Grid Connected 7600Watt @ 240V
 Max Continuous Output Power and Current @ 240V 7.4 kVA @ 240V
 11.4 kVA @ 240V
 277 – 240 – 204 Vdc
 Max Stand — Mono Capacity 11.4 kVA
 Max Continuous Output Current Grid Connected 35Adc
 Max Output Fault Current 74 Adc
 Frequency Min — Max 50 Hz
 Output Power Factor 0.98
 Max Ambient Temperature 50 C — 60 C — 80.5 F
 0 C — 0 F — 1
 60 C
 IP65/NEMA 4X

ETL LISTED
 4004590
 01 — 01 PowerKit
 017015A
 017015B
 0153 0154 0155 0156 0157 0158 0159
 WIFI MAC:
 84 08 C5 A0 5A 5E



PN: SE7600H — USMNUBL15
 SN: SB1724 — 07508AACC — F3

solar edge



**PHOTOVOLTAIC RAPID
 SHUTDOWN SYSTEM**

solar edge



7508AACC-F3

ETL LISTED
 COMPLIES TO
 ANSI/UL 1741
 CERTIFIED TO
 CAN/CSA
 C22.2 NO 107



ETL Intertek
 4004590
 01 — 01 PowerKit
 017015A
 017015B
 0153 0154 0155 0156 0157 0158 0159
 WIFI MAC:
 84 08 C5 A0 5A 5E



POWER SOURCE

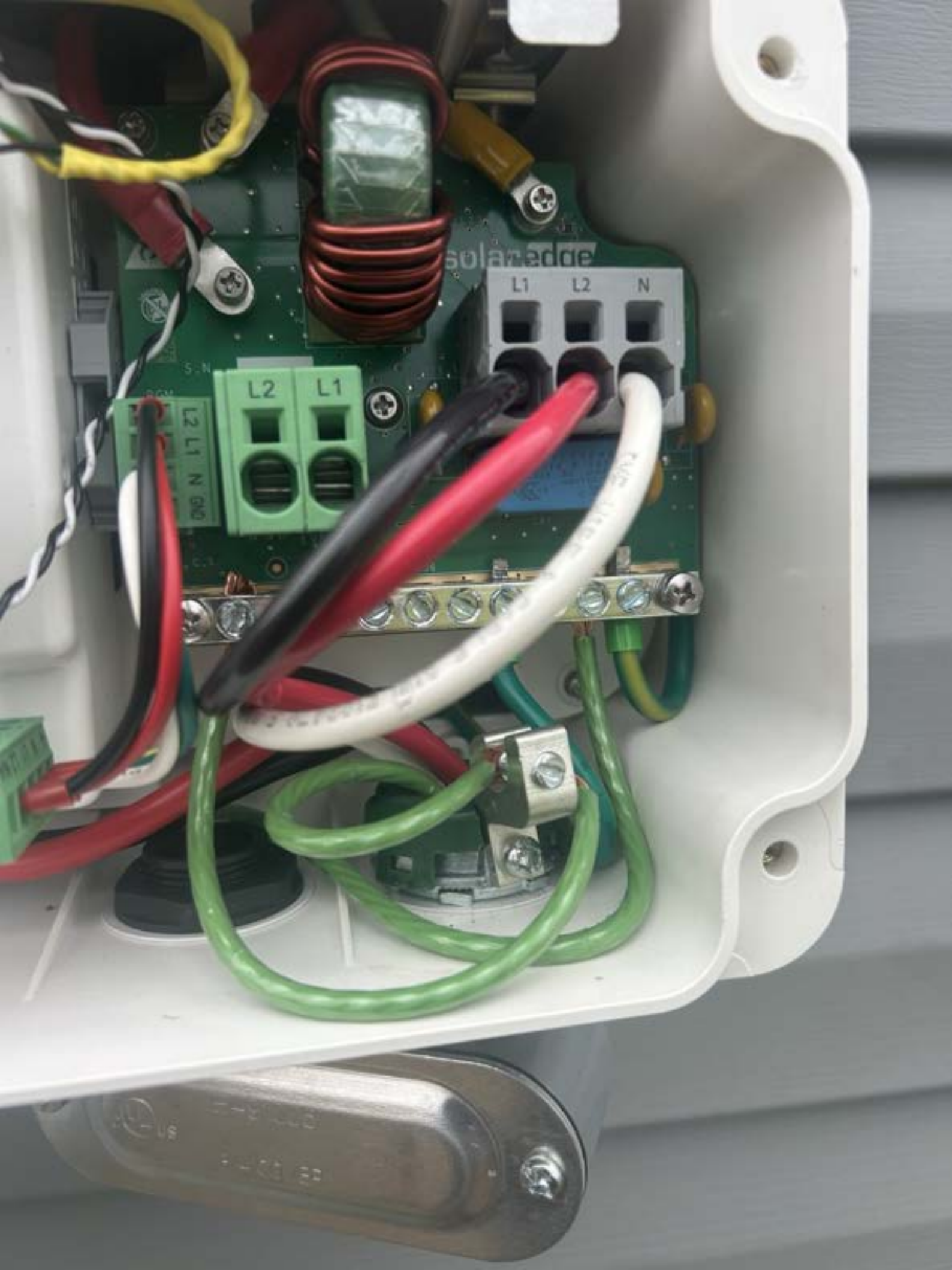
ECS-06-0001
4-33310

2nd Inv. SMRT EV

2nd Inv. Battery

Backup Interface

Solar





**KLEIN
TOOLS**

0.10 VDC



**TOUGH METER
IP53**

**ET250 VOLTAGE TESTER
CAT IV 600V**

COM

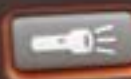
+

COM



**KLEIN
TOOLS**

VDC
0.11



TOUGH METER
IP53

ET250 VOLTAGE TESTER
CAT IV 600V

COM

+

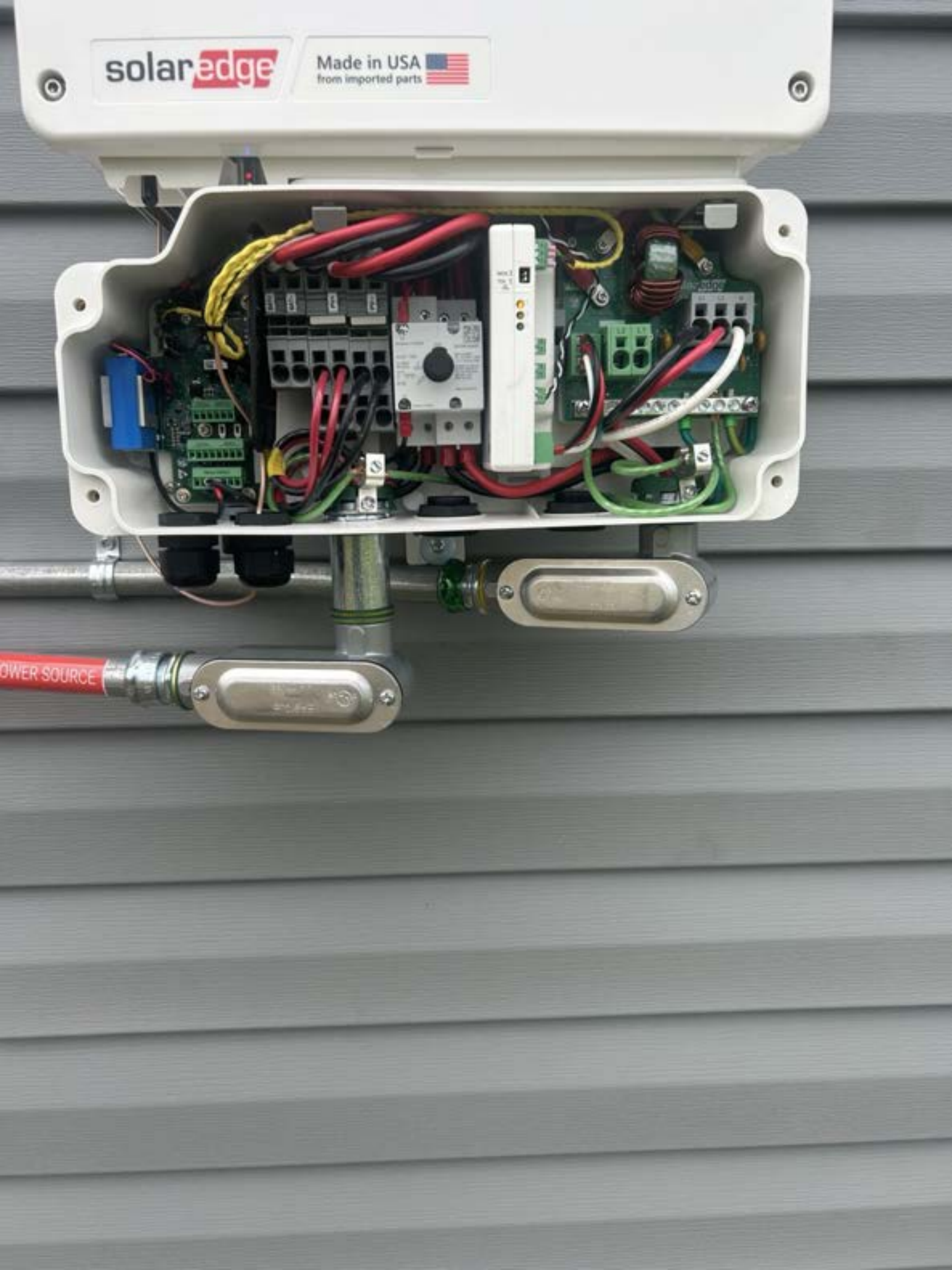
COM



solar**edge**

Made in USA 
from imported parts

POWER SOURCE



Grid Monitoring Completed.



Pairing Completed: 21 optimizers detected

**solar**edge

SN 7508AACC-F3



Status

Inverter

SN 7508AACC-F3

Summary



Power

509 W

Voltage

247 Vac

Frequency

60 Hz

P_OK: 21 of 21

Optimizers CommunicatingServer Comm. **S_OK****Cellular**

Status

Production

Power Limit

7.6 kW

Switch is

On

Cos Phi

Q

Country

[Disconnect from device](#)

solar**edge**

Made in USA 
from imported parts

DC DISCONNECT

ON

OFF



DANGER
DO NOT OPERATE

THIS LOCK/TAG MAY ONLY BE REMOVED BY:

NAME: TOFFIER

DEPT: _____

EXPECTED COMPLETION: _____

www.lockout.com 1-800-453-5888

AC POWER SOURCE

solar**edge**



DANGER
DO NOT OPERATE
THIS LOCK/TAG MAY ONLY BE REMOVED BY: **TOPTIER**



REINSTALE DESPUÉS DEL CABLEADO
REINSTALLER APRÈS L'INSTALLATION ÉLECTRIQUE
INSTALL 1ST

Bussmann
FUSETRON
ENERGY EFFICIENT
DUAL-ELEMENT TIME-DELAY
CLASS-RFUSE
FRN-R-40 1
250Vac
AC @ 30mA
125Vdc
DC @ 30mA

Bussmann
FUSETRON
ENERGY EFFICIENT
DUAL-ELEMENT TIME-DELAY
CLASS-RFUSE
FRN-R-40 1
250Vac
AC @ 30mA
125Vdc
DC @ 30mA



⚠ DANGER
NEVER OPEN THIS UNIT WITHOUT REMOVING THE COVER.

⚠ PELIGRO
NUNCA ABRIE ESTE EQUIPO SIN QUITAR LA CUBIERTA.

⚠ DANGER
NEVER OPEN THIS UNIT WITHOUT REMOVING THE COVER.

Never operate switch with cover open.
Always open cover before removing or installing cover.
Always use a properly rated voltage switch in any application. Use only the cover that is listed on the cover label.
Cover is not a part of the switch. Do not use cover for any other purpose.

El equipo debe ser instalado en un lugar seco y ventilado.
El equipo debe ser instalado en un lugar seco y ventilado.
El equipo debe ser instalado en un lugar seco y ventilado.
El equipo debe ser instalado en un lugar seco y ventilado.

Do not touch the switch cover when the cover is open.
Do not touch the switch cover when the cover is open.
Do not touch the switch cover when the cover is open.
Do not touch the switch cover when the cover is open.

DG222NRB

Series B
GENERAL DUTY SWITCH
Type 2B Enclosure - Recessed



TERMINALS SUITABLE FOR AL-CU WIRE
NOT RECEPTOR OR DISCONNECT SWITCH

TERMINALES ADECUADAS PARA CONDUCTORES DE AL-CU.
NO RECEPTOR DE CORRIENTE NI DISCONNECTOR



BORNES CONVENIENT PARA CONDUCTORES AL-CU.
60 Amperes 120/240, 240, 127/220 V ~ 60Hz 3Ø S/NL 3Ø N/S

Termination Ratings		KW/CONDUCTOR (BY POTENTIAL)		Amperes (Termination)	
Wire / Terminal Voltage	Min. / Max. Area	Min. / Max. Area	Min. / Max. Area	Min. / Max. Area	Min. / Max. Area
120 / 127	1.6 (1.1) / 2.6	1.6 (1.1) / 2.6	1.6 (1.1) / 2.6	1.6 (1.1) / 2.6	1.6 (1.1) / 2.6
240	3.2 (2.2) / 5.2	3.2 (2.2) / 5.2	3.2 (2.2) / 5.2	3.2 (2.2) / 5.2	3.2 (2.2) / 5.2

For grounded 3 phase systems only.
Maximum fuse size 60A.
The starting current of motors of more than the standard horsepower rating may require the use of fuses with appropriate time delay characteristics.
Continuous load current not to exceed 80% of the rating of fuses employed in other than motor circuits.
Suitable for use as an air vent equipment.
Suitable for use as a circuit capable of delivering not more than 10,000 RMS symmetrical amperes, 240 V - maximum when Class B fuses are used. Fuse size 250A/100kV required for B fuses.
CAREFUL - When Class B fuses are used, this switch may present a risk of fire and personal injury if installed on a circuit capable of delivering more than 10,000 RMS symmetrical amperes.
When used with Class B or B fuses, suitable for use on a circuit capable of delivering not more than 10,000 RMS symmetrical amperes, 240 volts maximum.
Experience has shown that renewable fuses can cause overheating problems and thus the use of renewable fuses is not recommended.
Use 60°C or 75°C wire.
Listed for use with Rata / N/2 / B/L/A - in wire range.
N - 50 AWG, 1 to 513 mm² AL - Cu

Este interruptor con fusibles no es un fusible.
Además para corrientes continuas de corriente.
La corriente de arranque de motores con capacidad mayor a los valores de potencia estándar puede requerir el uso de fusibles con características de retardo de tiempo apropiadas.
La corriente de carga continua no debe exceder el 80% de la capacidad del fusible empleado, con excepción de los circuitos de motores.
Adecuado para corrientes continuas capaces de entregar no más de 10,000 A RMS simétricas, con 240 V - máximo cuando se utilizan fusibles Clase B.
PRECAUCIÓN - cuando se utilizan fusibles Clase B, este interruptor puede presentar riesgo de incendio y daño personal si se instala en un circuito con capacidad de entregar más de 10,000 A RMS simétricas.
Cuando se utiliza con fusibles Clase B, el interruptor puede presentar un riesgo de incendio si se instala en un circuito capaz de entregar no más de 10,000 A RMS simétricos con 240 V - máximo.
La experiencia muestra que los fusibles renovables pueden causar problemas de sobrecalentamiento, por lo tanto, el uso de fusibles renovables no es recomendable.
Usar conductores para 60°C a 75°C.
Para el agente de terminación / familia de cables homologado / 75°C (167°F) o 90°C.
Rango de sección con transversal conductor
N - 50 AWG, 1 to 513 mm² AL - Cu

- Accessories
Install per instructions supplied with kit.
8 Fuse kit - C0369
Circuit lug kit - C0369B
Neutral lug - C0369C
3/4" (19.05mm) Hub size C0370A
1" (25.4mm) Hub size C0370B
1 1/2" (38.1mm) Hub size C0370C
2" (50.8mm) Hub size C0370D

Requisitos de instalación de fase B.
Asegurar sistema de puesta a tierra de la red.
Cablear de acuerdo a las especificaciones.
El tamaño de la corriente de arranque de los motores debe ser mayor que el "tercer punto" de la curva de arranque de los motores.
La corriente de arranque de los motores con capacidad mayor a los valores de potencia estándar puede requerir el uso de fusibles con características de retardo de tiempo apropiadas.
La corriente de carga continua no debe exceder el 80% de la capacidad del fusible empleado, con excepción de los circuitos de motores.
Adecuado para corrientes continuas capaces de entregar no más de 10,000 A RMS simétricas, con 240 V - máximo cuando se utilizan fusibles Clase B.
PRECAUCIÓN - cuando se utilizan fusibles Clase B, este interruptor puede presentar riesgo de incendio y daño personal si se instala en un circuito con capacidad de entregar más de 10,000 A RMS simétricos.
Cuando se utiliza con fusibles Clase B, el interruptor puede presentar un riesgo de incendio si se instala en un circuito capaz de entregar no más de 10,000 A RMS simétricos con 240 V - máximo.
La experiencia muestra que los fusibles renovables pueden causar problemas de sobrecalentamiento, por lo tanto, el uso de fusibles renovables no es recomendable.
Usar conductores para 60°C a 75°C.
Para el agente de terminación / familia de cables homologado / 75°C (167°F) o 90°C.
Rango de sección con transversal conductor
N - 50 AWG, 1 to 513 mm² AL - Cu

- Accessories
Install per instructions supplied with kit.
8 Fuse kit - C0369
Circuit lug kit - C0369B
Neutral lug - C0369C
3/4" (19.05mm) Hub size C0370A
1" (25.4mm) Hub size C0370B
1 1/2" (38.1mm) Hub size C0370C
2" (50.8mm) Hub size C0370D

- Accessories
Install per instructions supplied with kit.
8 Fuse kit - C0369
Circuit lug kit - C0369B
Neutral lug - C0369C
3/4" (19.05mm) Hub size C0370A
1" (25.4mm) Hub size C0370B
1 1/2" (38.1mm) Hub size C0370C
2" (50.8mm) Hub size C0370D

...ed by
...
72057

SNAP-IN
2ND

REINSTALL
REINSTATE DES
REINSTALLER APRES L'





LINE

SNAP-IN
2ND

SNAP-IN
2ND

REINSTALL AFTER WIRING

REINSTALE DESPUÉS DEL CABLEADO

REINSTALLER APRÈS L'INSTALLATION ÉLECTRIQUE

INSTALL 1ST

FUSIBLE
RNF-0 1

FUSIBLE
RNF-0 1



INSTALL 1ST



Bussmann
FUSETRON
ENERGY EFFICIENT
THERMAL ELEMENT TIME-DELAY
CLASS RK5 FUSE
FRN-R-40
250Vdc
AC @ 500A
125Vdc
DC @ 500A

Bussmann
FUSETRON
ENERGY EFFICIENT
THERMAL ELEMENT TIME-DELAY
CLASS RK5 FUSE
FRN-R-40
250Vdc
AC @ 500A
125Vdc
DC @ 500A



EATON

General Duty Safety Switch
Interrupteur de sécurité à usage général
Interruptor de seguridad de servicio general

60 A, 240 V~, 60 Hz

Complete ratings inside
Valeurs nominales complètes à l'intérieur
Información completa de capacidades en el interior

Further instructions inside
Autres instructions à l'intérieur
Instrucciones adicionales en el interior

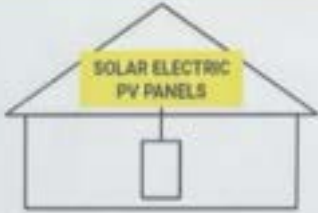
Made in U.S.A. / Fabriqué aux E.-U. / Hecho en E.U.A.

⚠ DANGER
DANGER: EXCESSIVE VOLTAGE WILL CAUSE SEVERE INJURY OR DEATH.
• Do not touch exposed parts with wet hands.
• Do not touch exposed parts if you are wearing jewelry.
• Do not touch exposed parts if you are wearing clothing that is damp or wet.
• Do not touch exposed parts if you are wearing shoes that are damp or wet.
• Do not touch exposed parts if you are wearing gloves that are damp or wet.
• Do not touch exposed parts if you are wearing a hat that is damp or wet.
• Do not touch exposed parts if you are wearing a coat that is damp or wet.
• Do not touch exposed parts if you are wearing a jacket that is damp or wet.
• Do not touch exposed parts if you are wearing a sweater that is damp or wet.
• Do not touch exposed parts if you are wearing a shirt that is damp or wet.
• Do not touch exposed parts if you are wearing a blouse that is damp or wet.
• Do not touch exposed parts if you are wearing a dress that is damp or wet.
• Do not touch exposed parts if you are wearing a skirt that is damp or wet.
• Do not touch exposed parts if you are wearing a pair of pants that is damp or wet.
• Do not touch exposed parts if you are wearing a pair of shorts that is damp or wet.
• Do not touch exposed parts if you are wearing a pair of socks that is damp or wet.
• Do not touch exposed parts if you are wearing a pair of shoes that is damp or wet.
• Do not touch exposed parts if you are wearing a pair of sandals that is damp or wet.
• Do not touch exposed parts if you are wearing a pair of slippers that is damp or wet.
• Do not touch exposed parts if you are wearing a pair of boots that is damp or wet.
• Do not touch exposed parts if you are wearing a pair of boots that is damp or wet.

⚠ PELIGRO
DANGER: EXCESSIVE VOLTAGE WILL CAUSE SEVERE INJURY OR DEATH.
• No tocar partes expuestas con las manos húmedas.
• No tocar partes expuestas si se está usando joyería.
• No tocar partes expuestas si se está usando ropa que esté húmeda o mojada.
• No tocar partes expuestas si se está usando zapatos que estén húmedos o mojados.
• No tocar partes expuestas si se está usando guantes que estén húmedos o mojados.
• No tocar partes expuestas si se está usando un sombrero que esté húmedo o mojado.
• No tocar partes expuestas si se está usando un abrigo que esté húmedo o mojado.
• No tocar partes expuestas si se está usando una chaqueta que esté húmeda o mojada.
• No tocar partes expuestas si se está usando un suéter que esté húmedo o mojado.
• No tocar partes expuestas si se está usando una camisa que esté húmeda o mojada.
• No tocar partes expuestas si se está usando una blusa que esté húmeda o mojada.
• No tocar partes expuestas si se está usando un vestido que esté húmedo o mojado.
• No tocar partes expuestas si se está usando una falda que esté húmeda o mojada.
• No tocar partes expuestas si se está usando un par de pantalones que estén húmedos o mojados.
• No tocar partes expuestas si se está usando un par de shorts que estén húmedos o mojados.
• No tocar partes expuestas si se está usando un par de medias que estén húmedas o mojadas.
• No tocar partes expuestas si se está usando un par de zapatos que estén húmedos o mojados.
• No tocar partes expuestas si se está usando un par de sandalias que estén húmedas o mojadas.
• No tocar partes expuestas si se está usando un par de zapatillas que estén húmedas o mojadas.
• No tocar partes expuestas si se está usando un par de botas que estén húmedas o mojadas.



**SOLAR PV SYSTEM
EQUIPPED WITH
RAPID SHUTDOWN**



TURN RAPID SHUTDOWN SWITCH TO THE "OFF" POSITION TO SHUT DOWN PV SYSTEM AND REDUCE SHOCK HAZARD IN THE ARRAY

**RAPID SHUTDOWN
SWITCH FOR
SOLAR PV SYSTEM**

CAUTION:
MULTIPLE SOURCES OF POWER
THE SERVICE DISCONNECT IS LOCATED
INSIDE OPPOSITE THE UTILITY METER

⚠ WARNING
ELECTRIC SHOCK HAZARD
TERMINALS ON THE LINE AND
LOAD SIDES MAY BE ENERGIZED
IN THE OPEN POSITION

**AC DISCONNECT
PHOTOVOLTAIC SYSTEM
POWER SOURCE**
RATED AC OUTPUT CURRENT **32** AMPS
NOMINAL OPERATING AC VOLTAGE **240** VOLTS

⚠ DANGER		⚠ PELIGRO
<p>Warning: Voltage may cause death, serious injury or permanent property damage.</p> <p>Turn off power before touching the equipment unless working inside.</p>		<p>Advertencia: Voltaje puede provocar la muerte, lesiones graves o daño permanente a la propiedad.</p> <p>Desconecte la energía antes de tocar el equipo a menos que esté trabajando dentro del mismo.</p>

⚡ CAUTION ⚡
SOLAR ELECTRIC SYSTEM CONNECTED

CL200 240V 3W TYPE C2M JUTA 1.0Kwh

ZZZ 4F6304 H67

DUKE ENERGY PROGRESS

342 463 108

OpenWay

CAUTION

00028E1100

888 888888

CAUTION

⚠ WARNING
 DUAL POWER SUPPLY
 SOURCES: UTILITY GRID
 AND PV SOLAR
 ELECTRIC SYSTEM

**PHOTOVOLTAIC
 SYSTEM kWh METER**

TALEN
 ENCLOSURE







PHOTOVOLTAIC POWER SOURCE





100

PHOTOVOLTAIC POWER SOURCE

PHOTOVOLTAIC POWER SOURCE





PV SOLAR
RIC SYSTEM

BREAKER
IS BACKFED
DO NOT RELOCATE

40

O/OFF

10 KA
120/240V



41

39

37

36

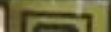
35

34

33

O/OFF

A



⚠ WARNING ADVERTENCIA AVERTISSEMENT

This equipment is designed and tested by Square D to performance levels which exceed Underwriters Laboratories Standards. Use of Other than Square D Circuit Breakers May Adversely Affect User Safety and Impair Reliability. Square D disclaims all liability for damage, injury or non-performance caused by the use or failure of non-Square D circuit breakers.

Este equipo ha sido diseñado y probado por Square D y supera las normas de nivel de rendimiento establecidas por Underwriters Laboratories (UL). El uso de interruptores automáticos que no sean de Square D puede afectar negativamente la seguridad del usuario y deteriorar la confiabilidad del equipo. Square D no asume responsabilidad alguna por daños, lesiones o funcionamiento inadecuado del equipo causado por el uso o desperfectos de interruptores automáticos que no sean de Square D.

Cet appareil est conçu et vérifié par Square D à des niveaux de rendement supérieurs aux normes de l'Underwriters Laboratories (UL) et de l'association canadienne de normalisation (CSA). L'utilisation de disjoncteurs autres que Square D risque d'affecter la sécurité de l'utilisateur et la fiabilité du matériel. Square D rejette toute responsabilité pour tout dommage, blessure ou mauvais fonctionnement résultant de l'utilisation ou de la défaillance de disjoncteurs autres que Square D.



- Ap
- Th
- pe
- Tu
- ec
- Al
- Re
- ec

Fail

41	39	37	35	33	31	29	27	25	23	21
P. Solar						Owner room	Smoke	Detector	From porch	Hotel. Hall. Bath
Solar						176. outlets			Dining. V. kitchen	Bath. outlets
									Bath. GFCI	Bedroom #2H
									Bed	Bath.
									Bedroom #3	175. outlets
									ATTN. Electric	Bedroom #3
									175. outlets	175. outlets
									Garage family	Garage family
									Back porch	Back porch
42	40	38	36	34	32	30	28	26	24	22

Use only Square D QO Circuit Breakers. / Utilice sólo interruptores automático QO de Square D.

MAIN
PRINCIPAL

SERVICE DISCONNECT
DESCONEJON DE
ACOMETIDA

200

O/OFF

SERVICE DISCONNECT
DESCONEJON DE
ACOMETIDA

SOLAR POINT OF INTERCONNECTION



CAUTION



SOLAR ELECTRIC SYSTEM CONNECTED



WARNING

DUAL POWER SUPPLY

SOURCES: UTILITY GRID
AND PV SOLAR
ELECTRIC SYSTEM

RAPID SHUTDOWN
SWITCH FOR
SOLAR PV SYSTEM



WARNING

POWER SOURCE
OUTPUT CONNECTION
DO NOT RELOCATE THIS
OVERCURRENT DEVICE

CAUTION:
 MULTIPLE SOURCES OF POWER
 THE PV DISCONNECT IS LOCATED
 BESIDE THE SERVICE METER

SD SMITH DOUGLAS HOMES

QUALITY | INTEGRITY | VALUE

Smith Douglas Service Email - Warranty@raleigh@smithdouglas.com
 Smith Douglas Service Line - (888) 357-6583

Emergency Contact Numbers		Duncans Crossing	Lot 33
Electrician	AKE Electric		919-367-6100
Plumbing	E&M Plumbing		919-292-2048 803-770-9303(after hours)
Heating & Air	Bowman Mechanical Services Inc.		919-772-2759
Appliances	Frigidare.com		855-224-4387
Utility-Water	Harnett County		910-814-4002
Utility-Electric	Duke Energy Progress		800-777-9898
Gas	LP optional for fireplace		Contact local LP provider
Location of Gas Shut Off	N/A		
Location Water Shut Off	Garage at Water Heater		IF Basement lot located in basement
Septic	A&R Enterprise		845-742-8576
Interior - Brand:	Sherwin Williams		Closing Date:
Walls:	SW 7014 Eider White		Air Filter Size:
Ceiling:	SW 7014 Eider White		Change Filter Date:
Trim:	SW7006 Extra White		monthly
Exterior - Brand:	Vinyl Siding		Change Battery Date:
Siding:	Sterling Gray		every time change
Shutter/Door:	Black/SW6258 Tricorn Black		
Shake/Trim:	Cape Cod/White		

SOLAR POINT OF INTERCONNECTION

CAUTION
SOLAR ELECTRIC SHOCK HAZARD

WARNING
READ MANUAL CAREFULLY
BEFORE USING THIS
EQUIPMENT TO
PREVENT INJURY

**RAPID SHUTDOWN
SWITCH FOR
SOLAR PV SYSTEM**

WARNING
POWER SOURCE
OUTPUT CURRENTS
DO NOT EXCEED THIS
OVERCURRENT DEVICE

CAUTION
NEVER OPEN THIS COVER
WHILE THE SYSTEM IS
UNDER LOAD

SMITH SOLAR SWITCH

Parameter	Value
Rated Voltage	120V AC
Rated Current	15A
Rated Power	1800W
Rated Energy	1800VA
Rated Frequency	60Hz
Rated Temperature	40°C
Rated Humidity	95%
Rated Altitude	2000m
Rated Pollution Degree	3
Rated Seismicity	0.2g
Rated Vibration	0.15mm/s
Rated Shock	1500m/s ²
Rated Lifetime	10 years
Rated MTBF	100,000 hours
Rated Mean Time to Failure	100,000 hours
Rated Mean Time to Repair	100,000 hours
Rated Mean Time to Replace	100,000 hours
Rated Mean Time to Dispose	100,000 hours
Rated Mean Time to Recycle	100,000 hours
Rated Mean Time to Recover	100,000 hours
Rated Mean Time to Reuse	100,000 hours
Rated Mean Time to Repair	100,000 hours
Rated Mean Time to Replace	100,000 hours
Rated Mean Time to Recycle	100,000 hours
Rated Mean Time to Recover	100,000 hours
Rated Mean Time to Reuse	100,000 hours

SOLAR POINT OF INTERCONNECTION







CAUTION
AC ELECTRICAL SYSTEM COMPONENTS

PHOTOVOLTAIC
SYSTEM kWh METER

WARNING
DUAL POWER SUPPLY
SERIOUSLY DANGEROUS
AND FATAL
DANGER OF DEATH

E-T-N

SOLAR PV SYSTEM
EQUIPPED WITH
RAPID SHUTDOWN

RAPID SHUTDOWN
SWITCH FOR
SOLAR PV SYSTEM

CAUTION
SERIOUSLY DANGEROUS
AND FATAL
DANGER OF DEATH

WARNING
ELECTRIC SHOCK HAZARD
TERMINALS ON THE LINE AND
LIVE WIRING MAY BE ENERGIZED
IN THIS AREA POSITION

AC DISCONNECT
FOR SINGLE PHASE
POWER SOURCE

WARNING
SERIOUSLY DANGEROUS
AND FATAL
DANGER OF DEATH



PHOTOVOLTAIC SYSTEM COMPONENTS



PHOTOVOLTAIC POWER SOURCE

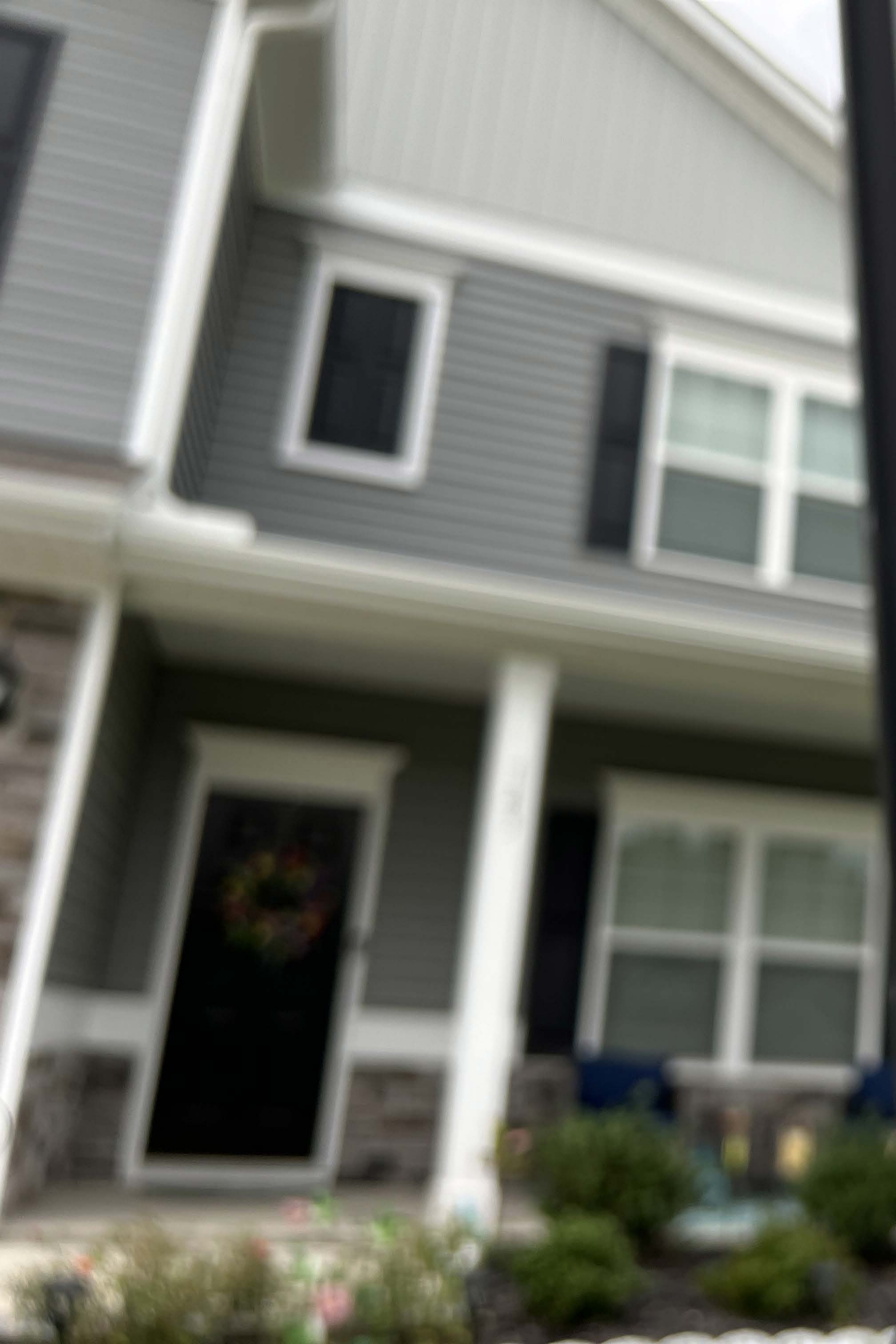




PHOTOVOLTAIC







Jinko Solar
 Jinko Solar Co., Ltd.
 No. 1, Yujin Road, Economic Development Zone,
 Shanghai City 201800 Jiangai, P.R. China
 www.jinkosolar.com

PHOTOVOLTAIC MODULE
 Modules assembled in the USA from solar cells made in Vietnam

Solar Module Type: JKM630M-72HL-V	390W
Maximum Power (P _{max})	±3%
Power Measurement Tolerance	±3%
Maximum Power Voltage (V _{mp})	39.64V
Maximum Power Current (I _{mp})	9.84A
Open Circuit Voltage (V _{oc})	48.60V±3%
Short Circuit Current (I _{sc})	10.46A±4%
Maximum System Voltage (V _{oc})	1500VDC
Maximum System Current (I _{sc})	0~+3%
Maximum System Protection Rating	20A
Power Rating	II
Protection Class	Type 1 (UL1702) Class C (IEC 61730)
Fire Class	22.5(kg)
Weight	2008x1002x40(mm)
Dimension	100W/m ² , AM1.5, 25°C
ETC	II
Current Rating	II

UL US LISTED
 PHOTOVOLTAIC MODULE OVER AIR VOLTAGE
 CLASS C
 JKM630M-72HL-V

CE

For Type: See installation instructions for installation requirement to achieve a specified system life class rating with this product.
 For field connections, use 12 AWG Cu wire only, insulated for a minimum of 90°C.

WARNING
 ONLY qualified personnel should install or perform maintenance work on these modules.
 BE AWARE of dangerous high DC voltage when connecting modules.
 DO NOT damage or scratch the rear surface of the module.
 SEE module literature for appropriate mating connectors.
 DO NOT disconnect the cables or connectors under load.

AVERTISSEMENT
 SEUL les professionnels peuvent installer et maintenir les éléments.
 PRÉCAUTION GARDE de la haute tension continue lorsque les éléments sont connectés.
 NE PAS tenter d'endommager ou d'écarter l'arrière des éléments.
 VOIR les notes modules pour les connecteurs de raccordement appropriés.
 Ne déconnectez pas le câble ou le connecteur sous charge.
 Pour les raccords sur le terrain, n'utiliser un câble isolé en cuivre de 12 AWG avec un minimum de 90°C.

Barcode and QR code

