

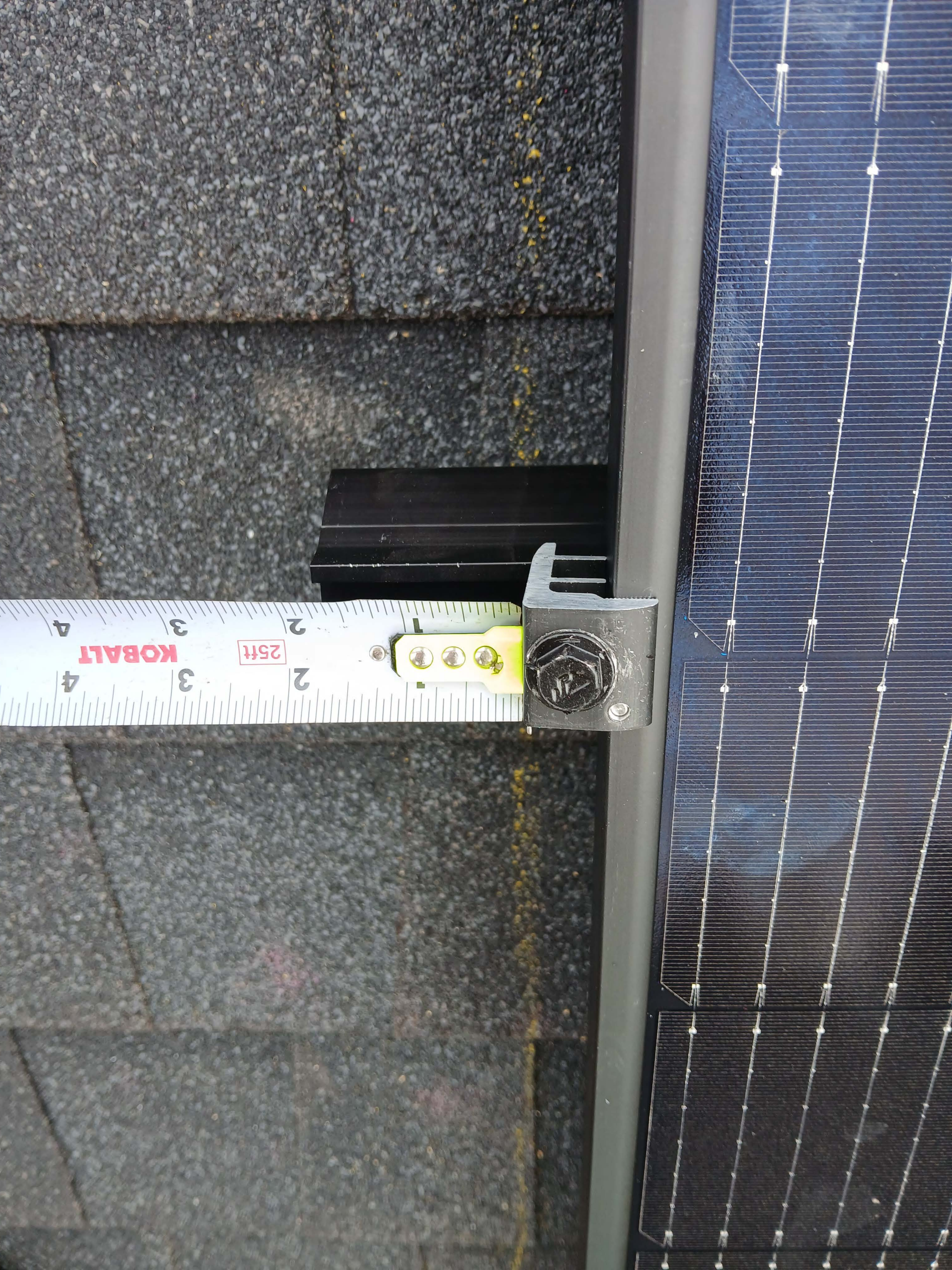




Do not disconnect
under load

Resistant - 300V - 100A





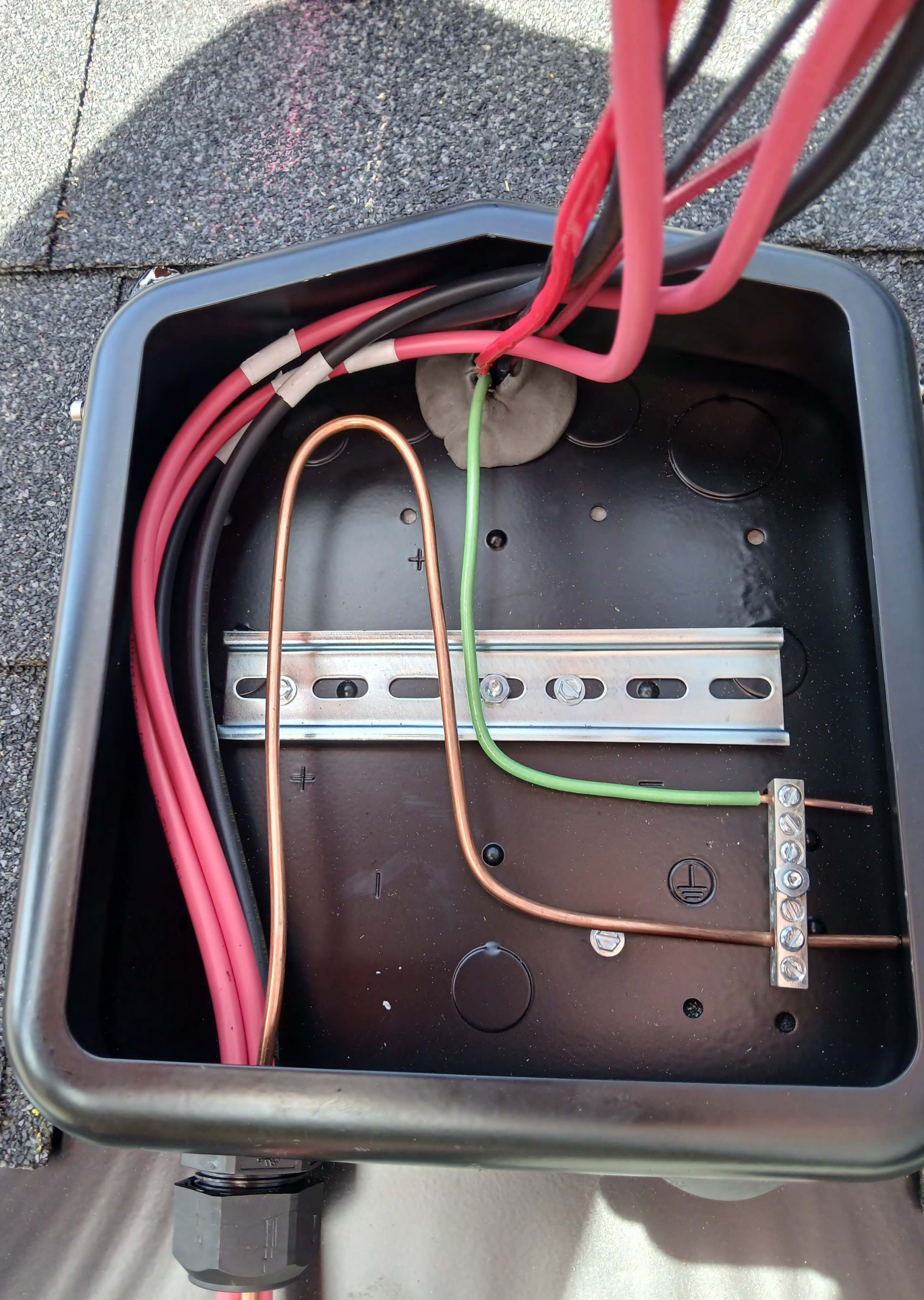
KOBALT

25ft

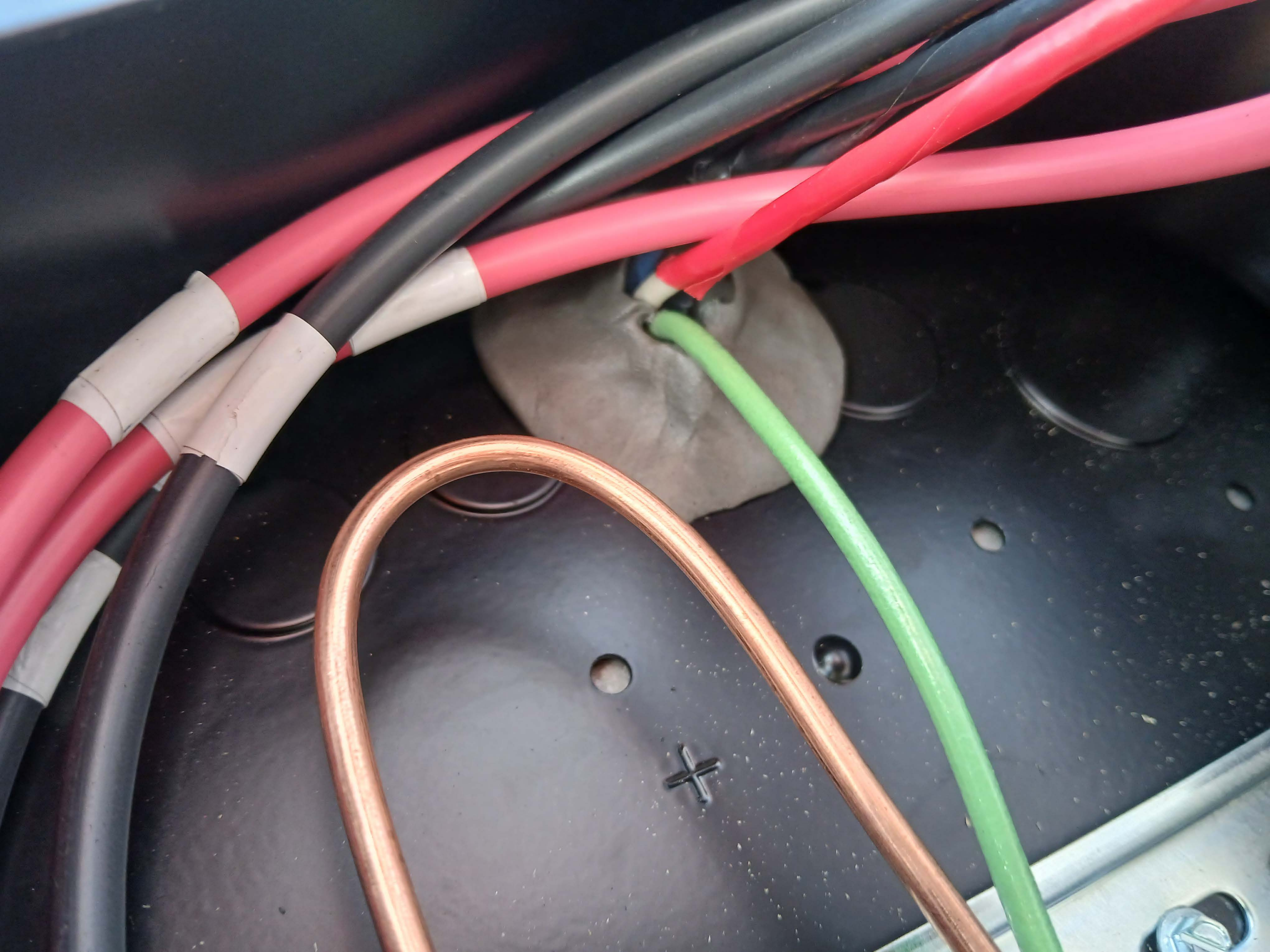
4 3 2 1 2 3 4











1



qcells
Assembled in USA

Q. TRON BLK M-G2+ 425

See us for a greater tomorrow with completely clean energy solutions.

PERFORMANCE AT STANDARD TEST CONDITIONS*			
Normal Power ¹ (P _{max})	W	425	
Short Circuit Current ² (I _{sc})	A	13.66	
Open Circuit Voltage ² (V _{oc})	V	39.03	
Current at maximum power ² (I _{mp})	A	12.98	
Voltage at maximum power ² (V _{mp})	V	32.74	
Maximum system voltage ³ (V _{max})	V	1000 (IEC)	
Weight	M	10000 (UL)	21.2 (46.7)

Measurements taken at 25 ± 2°C, 1000 W/m², Air Mass 1.5, 15% relative humidity. *Data given are rated (nominal) values.
 Measurements according to IEC 60904-1 and IEC 61724-1. Data given are rated (nominal) values.

CAUTION
 Risk of electric shock!
 DO NOT touch terminals or disconnect plug contacts while the system is under load current. Refer to the installation and operation manual for further information on electrical safety during installation, operation or servicing this unit.

DANGER
 Risk of fire or other electrical hazard!
 NEVER connect or disconnect the system, or any other electrical components, without the use of appropriate safety procedures. Refer to the installation and operation manual for further information on electrical safety during installation, operation or servicing this unit.

U.S. Patent No. 8,893,213
 Solar Cell

EMAIL www.qcells.com
WEB www.qcells.com

28462437463191520

Model: Q CELLS USA Inc.
 877-10-1000, 10000, 10000, 10000, USA



WARNING: PHOTOVOLTAIC POWER SOURCE

SOLADECK
 Photovoltaic Combiner/Enclosure Conforms to UL 1741; Certified to CSA C22.2 No. 290; Nema Type 3R
 01 02 03 04 21 22 23 24
 0799 Series 0766-41AD
 Max Ratings: 600 VDC/11.5 AMPS; 240 VAC/60 AMPS; Short Circuit 10KA, Ambient Temp 75°C
 Refer to the instruction manual for terminal torque information.

<p>WARNING</p> <p>⚡</p> <p>• ALWAYS USE PROPER SAFETY PROCEDURES WHEN WORKING ON PHOTOVOLTAIC SYSTEMS. PHOTOVOLTAIC SYSTEMS CAN BE ENERGIZED BY THE GRID OR BY THE PHOTOVOLTAIC PANELS THEMSELVES. ALWAYS DISCONNECT ALL PHOTOVOLTAIC PANELS FROM THE SYSTEM BEFORE WORKING ON THE SYSTEM. ALWAYS WEAR APPROPRIATE SAFETY EQUIPMENT. ALWAYS USE PROPER SAFETY PROCEDURES. ALWAYS USE PROPER SAFETY PROCEDURES. ALWAYS USE PROPER SAFETY PROCEDURES.</p>	<p>AVERTISSEMENT</p> <p>⚡</p> <p>• TOUJOURS UTILISER LES PROCÉDÉS DE SÉCURITÉ APPROPRIÉS LORS DU TRAVAIL SUR LES SYSTÈMES PHOTOVOLTAÏQUES. LES SYSTÈMES PHOTOVOLTAÏQUES PEUVENT ÊTRE ENERGISÉS PAR LE RÉSEAU OU PAR LES PANNEAUX PHOTOVOLTAÏQUES EN SOI-MÊME. TOUJOURS DÉCONNECTER TOUS LES PANNEAUX PHOTOVOLTAÏQUES DU SYSTÈME AVANT DE TRAVAILLER SUR LE SYSTÈME. TOUJOURS PORTER L'ÉQUIPEMENT DE SÉCURITÉ APPROPRIÉ. TOUJOURS UTILISER LES PROCÉDÉS DE SÉCURITÉ APPROPRIÉS. TOUJOURS UTILISER LES PROCÉDÉS DE SÉCURITÉ APPROPRIÉS.</p>
--	--

205 Sneed Lane
 Fuquay-Varina, NC 27526

RSTC Enterprises
 Part No. 1

















WARNING: PHOTOVOLTAIC
POWER SOURCE

WARNING: PHOTOVOLTAIC
POWER SOURCE

WARNING: PHOTOVOLTAIC
POWER SOURCE

WARNING: PHOTOVOLTAIC
POWER SOURCE



**WARNING: PHOTOVOLTAIC
POWER SOURCE**

**WARNING: PHOTOVOLTAIC
POWER SOURCE**

**WARNING: PHOTOVOLTAIC
POWER SOURCE**

