



6

5

4

3

STANLEY

30ft

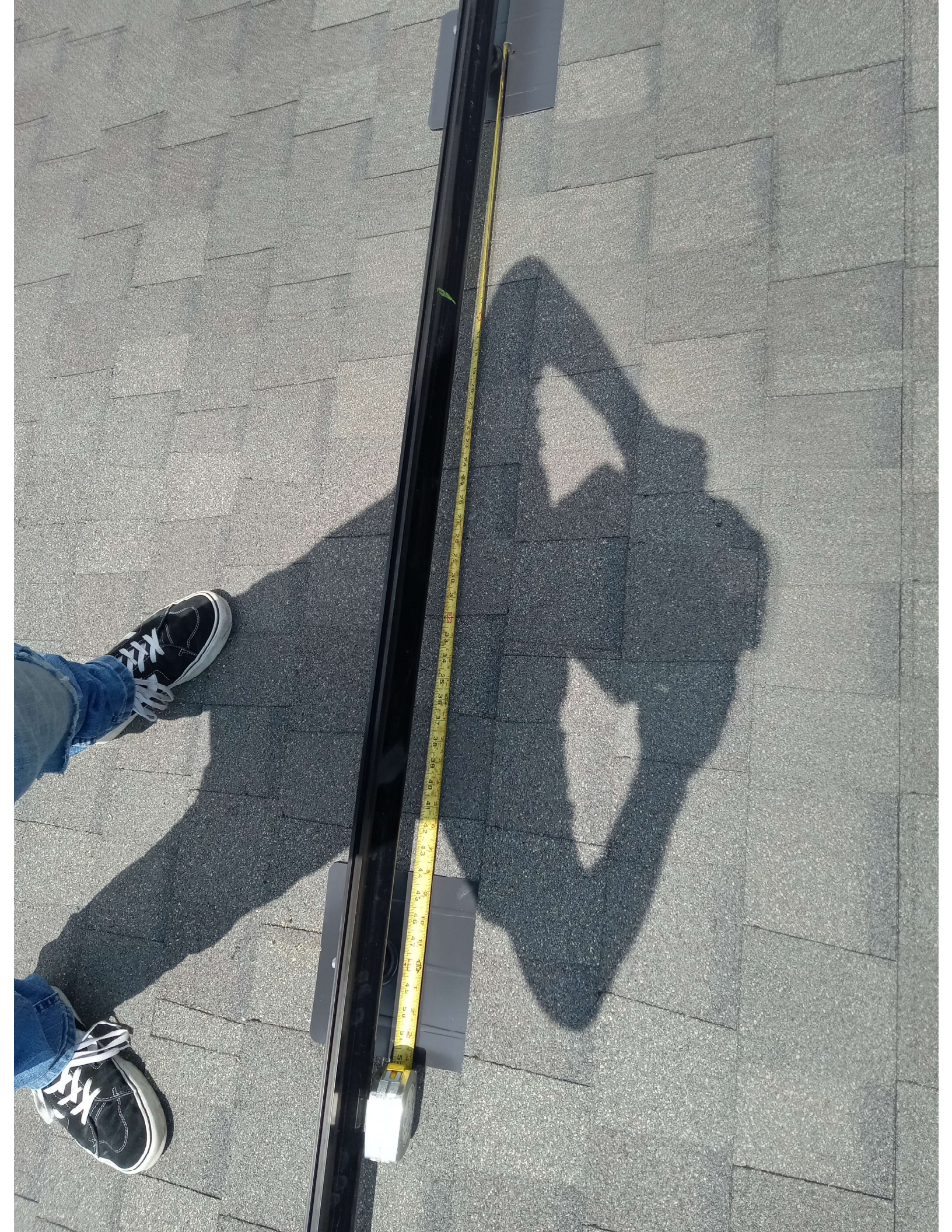
ft

in

1

1

1





52
51
50
49
48
47
46
45
44
43
42
41
40
39
38
37
36
35



ENCLOSURE MUST BE GROUNDED
for Rebus communication



RCP: 0001001-390
S/N: S2502-A3560
MFG: B
Date: 04/21/17

ENCLOSURE MUST BE GROUNDED
for Rebus communication

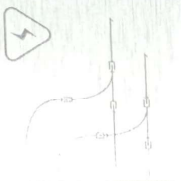


Rebus DC Nanogrid

PVRS Controlled Conductor Connection Port
Refer to instructions for conditions of use



WARNING: ELECTRICAL SHOCK HAZARD - DO NOT TOUCH CONDUCTORS MAY BE ENERGIZED REGARDLESS OF SUN EXPOSURE.
CAUTION: REBUS DC SYSTEMS ARE UNGROUNDED AND MAY BE ENERGIZED. ELECTRICAL SHOCK HAZARD - DO NOT TOUCH CONDUCTORS MAY BE ENERGIZED REGARDLESS OF SUN EXPOSURE.
AVERTISSEMENT: RISQUE DE CHOC ELECTRIQUE - NE PAS TOUCHER LES CONDUCTEURS QUI PEUVENT ETRE ENERGISES MALGRÉ L'ABSENCE DE LA LUMIERE DU SOLEIL.
ATTENTION: RISQUE DE CHOC ELECTRIQUE - NE PAS TOUCHER LES CONDUCTEURS QUI PEUVENT ETRE ENERGISES MALGRÉ L'ABSENCE DE LA LUMIERE DU SOLEIL.



GENERPAC

PV Link / S2502
SnappRS™ compatible substring optimizer
PV rapid shutdown system equipment

IMPORTANT INSTALLATION INSTRUCTIONS:



Input:
Max 420V temperature corrected V_{oc}
SINGLE STRING INPUT.
Dual string input requires approval.
Output:
Connect PV Links to inverter Rebus terminals in parallel.



WARNING
CANCER AND REPRODUCTIVE HAZARD
www.fda.gov/oc/ohrt
Made in Vietnam
Confirms to UL1741 Jul1699B
Certified to CSA C22.2 #107.1

MAX CONT. OUTPUT POWER	2500 W
STANDBY POWER	<1 W
RATED POWER INPUT VOLTAGE	200-360 VDC
MAX INPUT CURRENT	60-300 mA
MAX INPUT VOLTAGE	420 V
MAX OUTPUT VOLTAGE	420 V
MAX OUTPUT CURRENT	30 A
MAX AMBIENT TEMP	70° C
MAX OUTPUT CURRENT (OPERATING)	13 A @ 50°C, 10 A @ 70°C
MAX INPUT CURRENT (SHORT CIRCUIT)	18 A
MAX OUTPUT CURRENT (CONTINUOUS)	8 A
MAX OUTPUT CURRENT (FAULT)	10 A
ENCLOSURE TOPOLOGY PROTECTIONS	TYPE A PVRS CONVERTER GFCI, Photovoltaic DC Arc-Fault Circuit Protection, Type 1, PVRSF



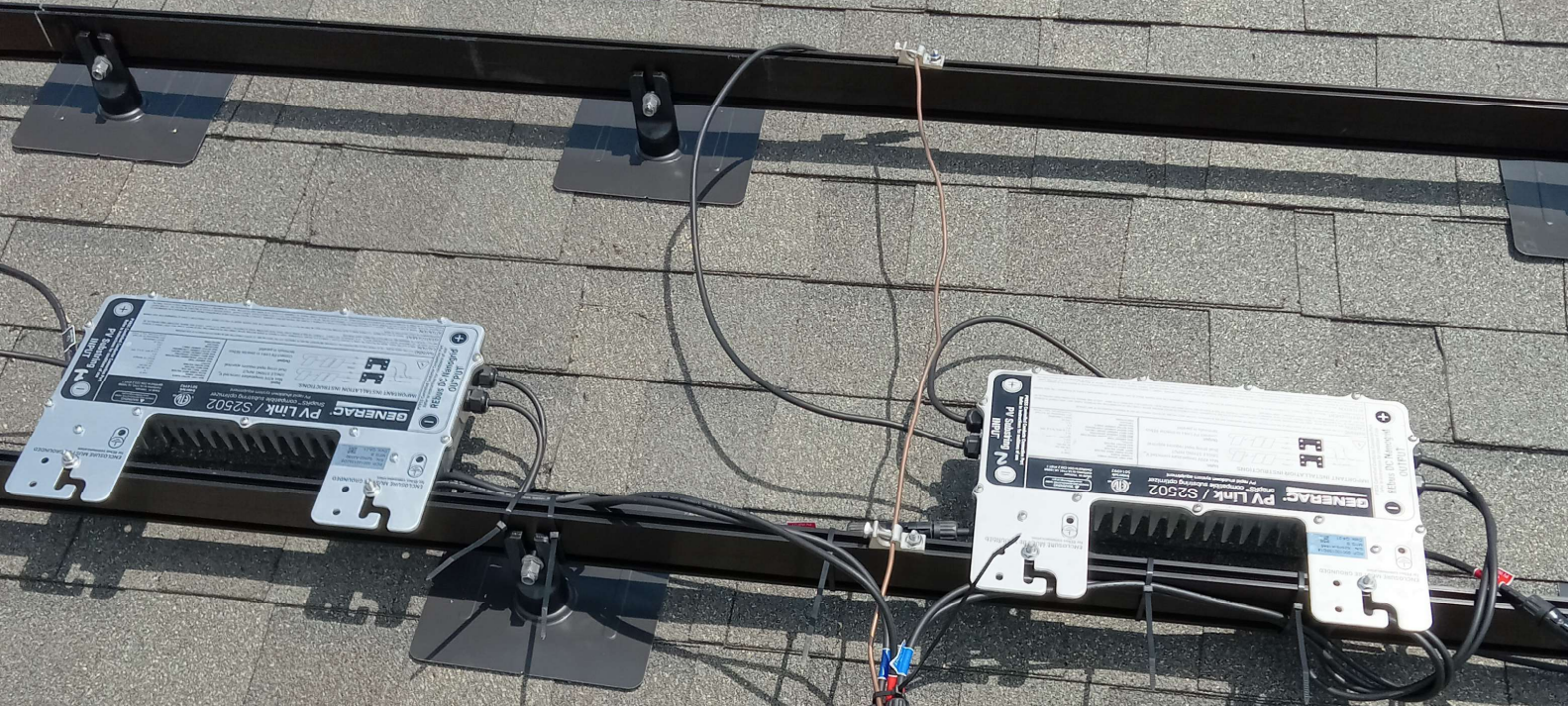
PV Substring INPUT

PVRS Controlled Conductor Connection Port
Refer to instructions for conditions of use









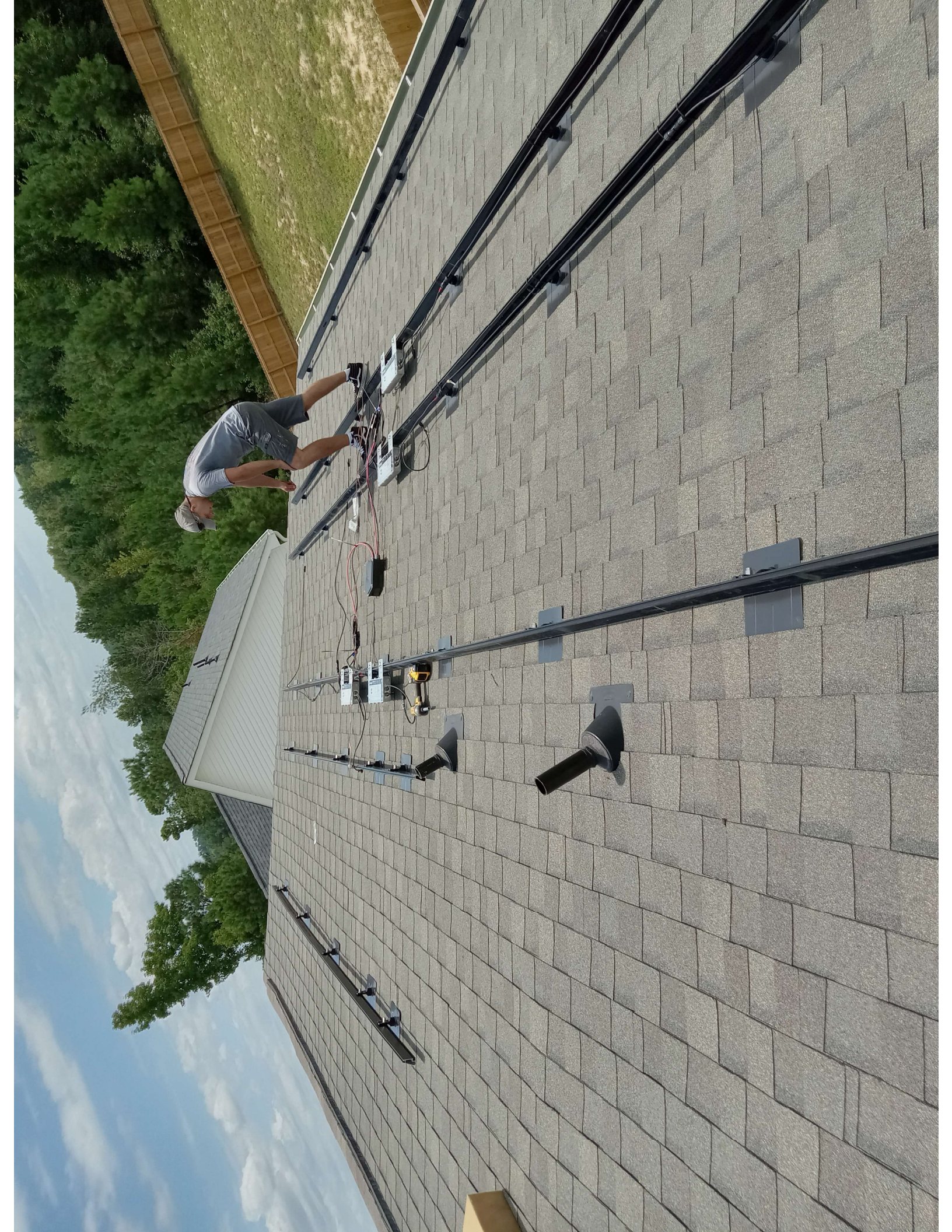




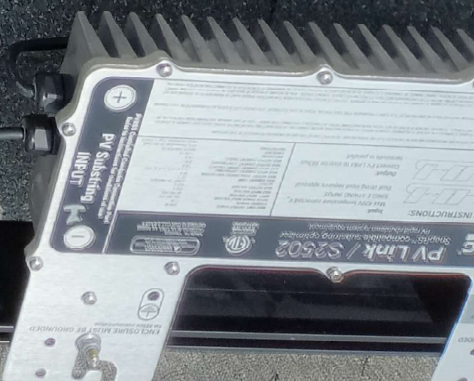
REVERSE DC Disconnect
OUTPUT

PV INPUT









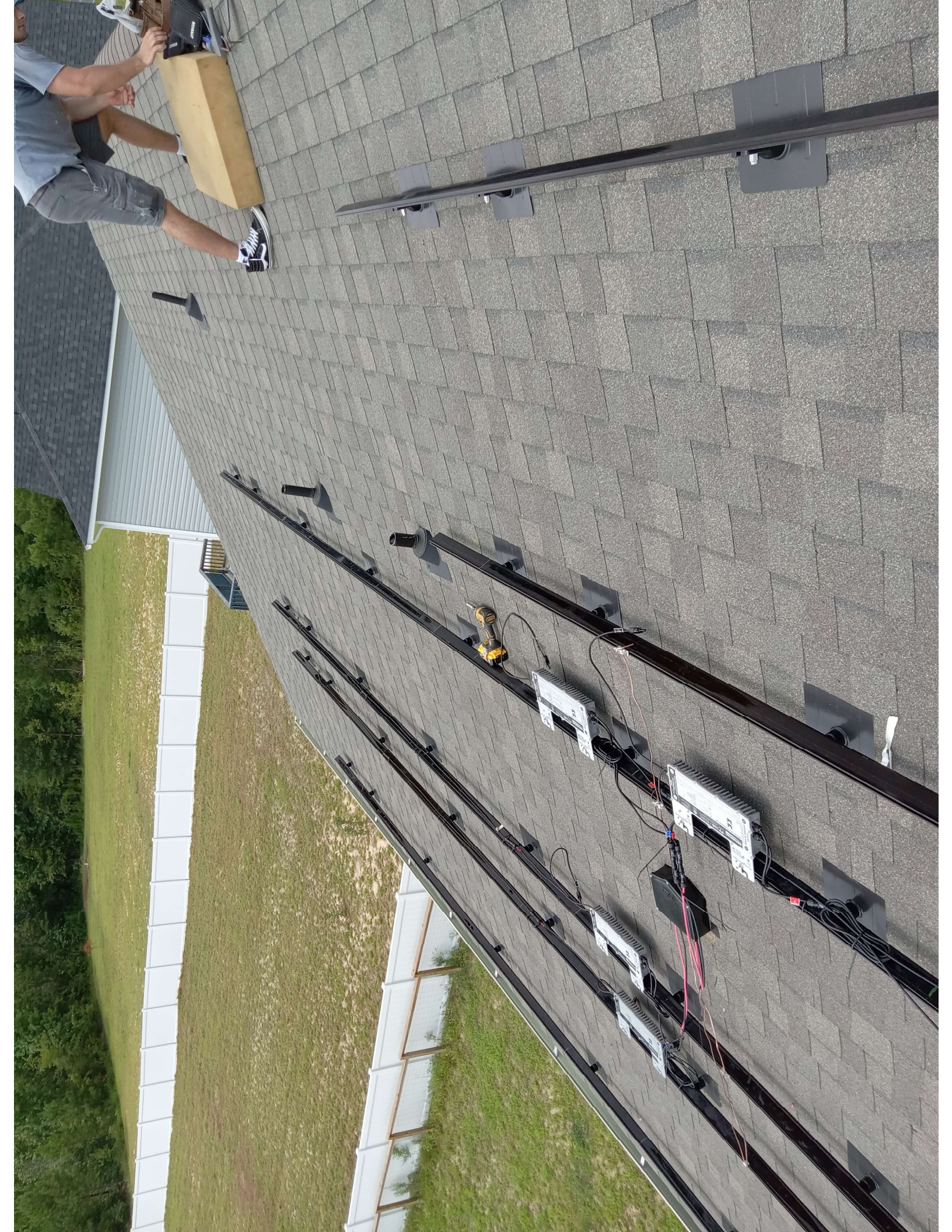


ENCLOSURE MUST BE GROUNDED
for REBUS communication

REBUS BE OVPD

EZ
SOLAR
12V

60°C WET OR DRY 600V SUN



ETV
Intertek
501.4992

PRRES Conformed Device - Conforms to UL1741, Certified to CSA 227.2
#107, enclosure rated UL TYPE 6P. See product manual for ratings
input voltage: 80VDC; Max input current: 5A
Temperature range: -40° to 70° C; Response time: <10s

GENERAC SnapRS™ / RS802

Mfg: B Date: Q322

Serial: A512767718





