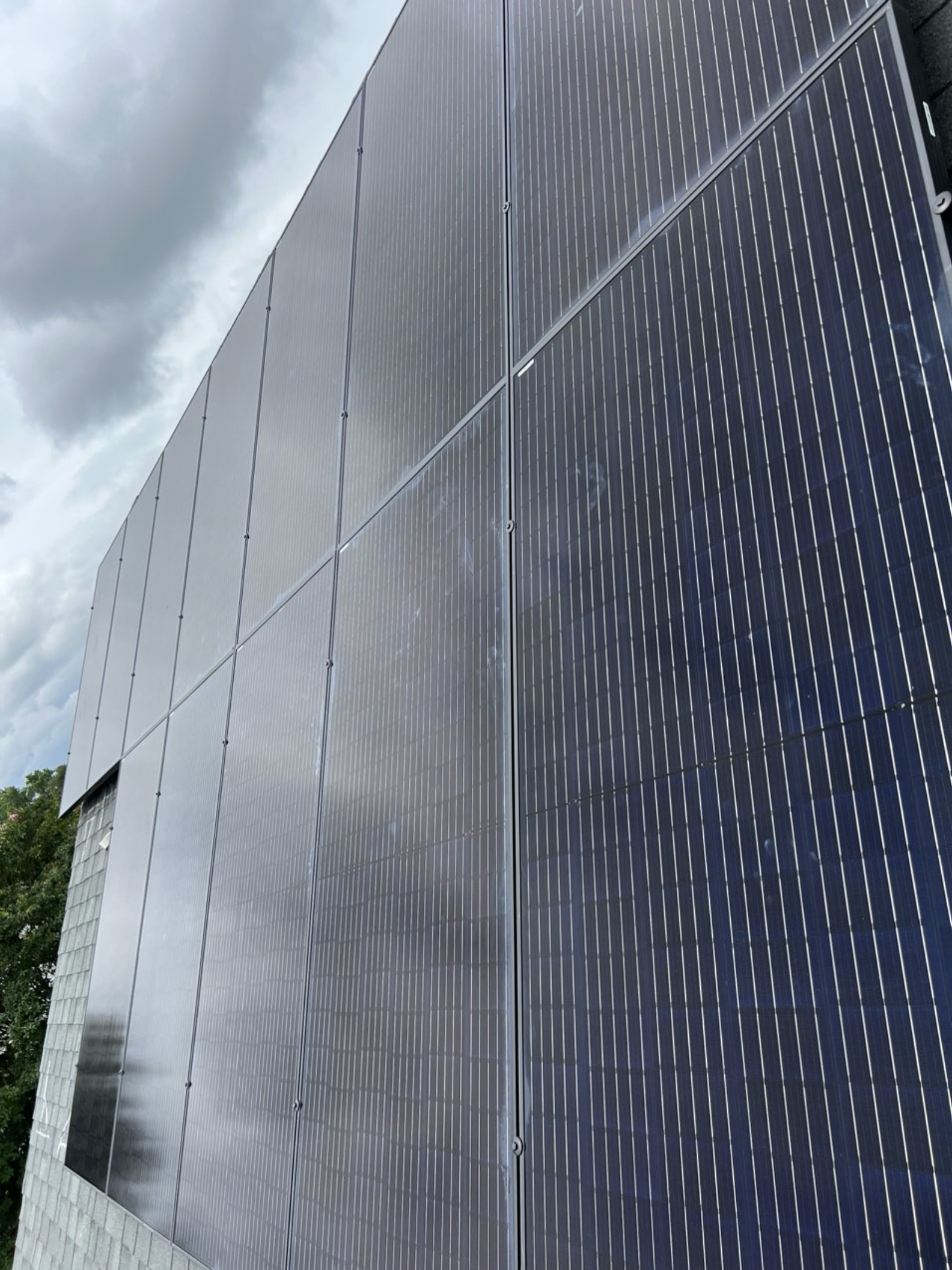




TIER
UTIONS

















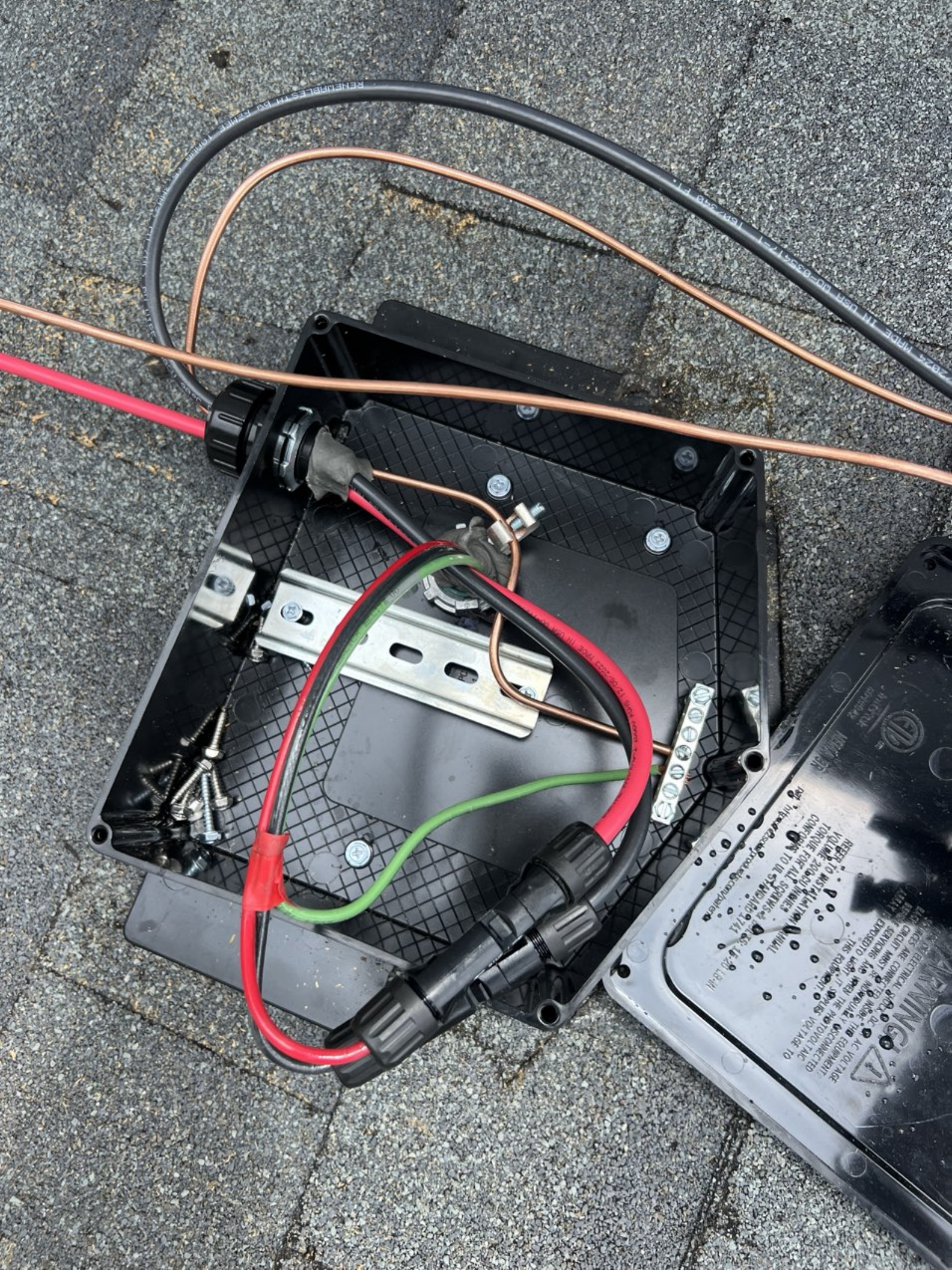
12





EZR SOLAR
MADE IN THE USA

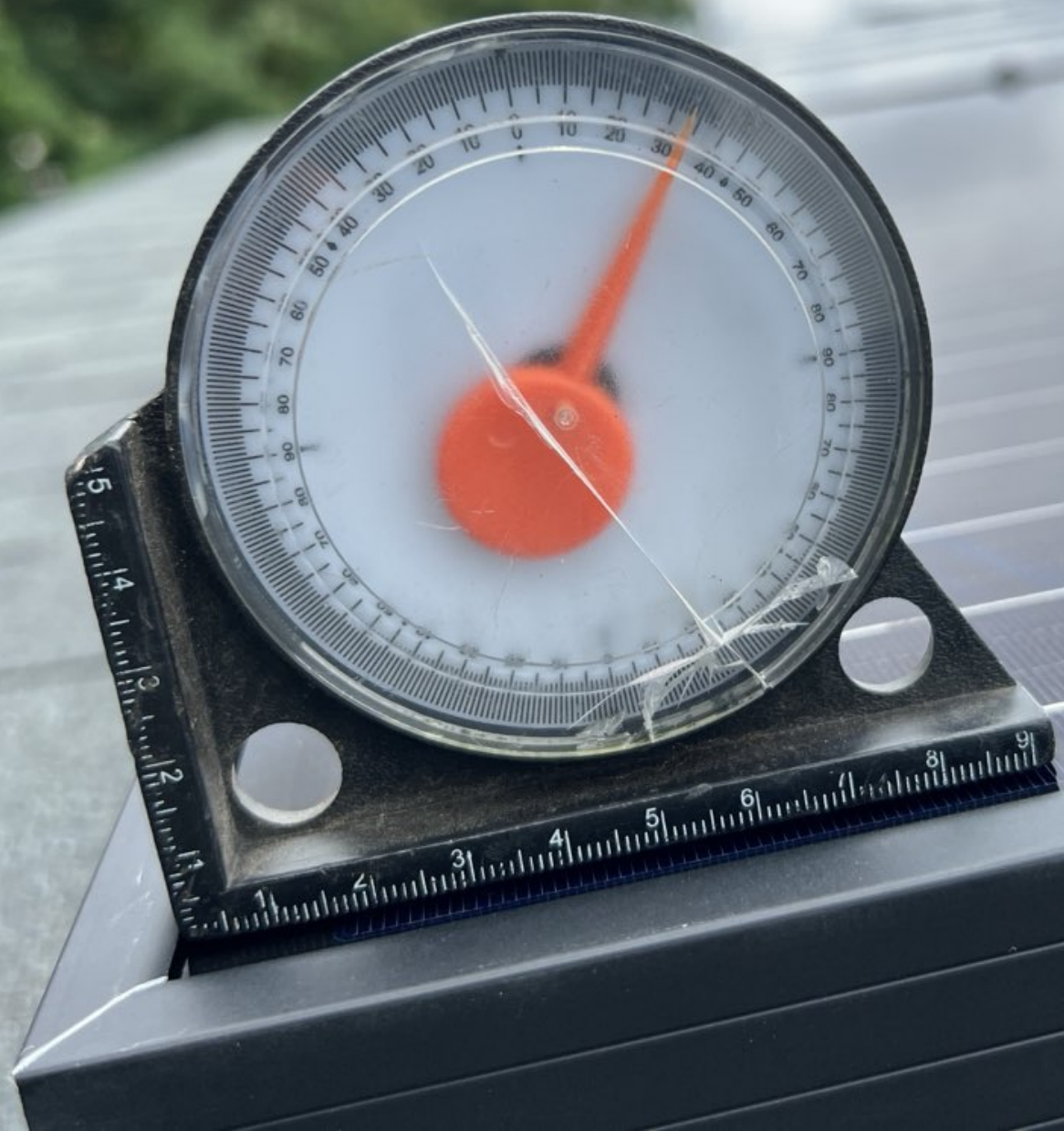
Recharge
SOLAR CONTROLLER
12V 10A
MPPT
MAXIMUM POWER POINT TRACKING
TEMPERATURE COMPENSATED
CHARGE REGULATION
LOW VOLTAGE CUT-OFF
OVERCHARGE PROTECTION
OVERCURRENT PROTECTION
SHORT-CIRCUIT PROTECTION
OVERHEAT PROTECTION
AUTO REVERSE POLARITY PROTECTION
AUTO REVERSE BATTERY PROTECTION
AUTO REVERSE LOAD PROTECTION
AUTO REVERSE WIRE PROTECTION
AUTO REVERSE GROUND PROTECTION
AUTO REVERSE SHORT-CIRCUIT PROTECTION
AUTO REVERSE OVERCURRENT PROTECTION
AUTO REVERSE OVERHEAT PROTECTION
AUTO REVERSE OVERVOLTAGE PROTECTION
AUTO REVERSE UNDERVOLTAGE PROTECTION
AUTO REVERSE UNDERCURRENT PROTECTION
AUTO REVERSE UNDERHEAT PROTECTION
AUTO REVERSE UNDERVOLTAGE PROTECTION
AUTO REVERSE UNDERCURRENT PROTECTION
AUTO REVERSE UNDERHEAT PROTECTION
AUTO REVERSE UNDERVOLTAGE PROTECTION
AUTO REVERSE UNDERCURRENT PROTECTION
AUTO REVERSE UNDERHEAT PROTECTION

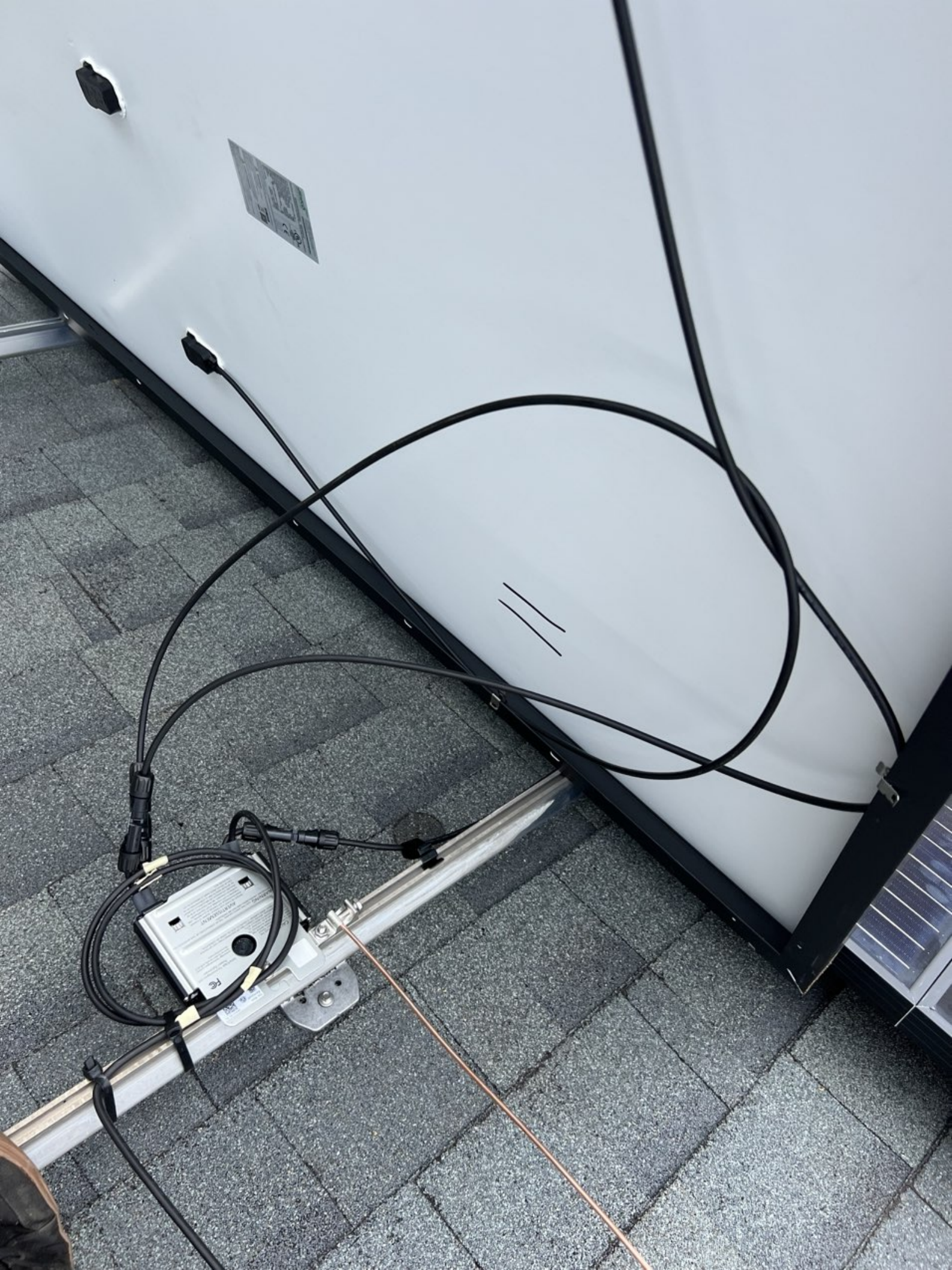


WARNING
AC VOL TAGE
ELECTRICAL SHOCK
AC CIRCUIT MUST BE DISCONNECTED
BEFORE WORKING ON THIS EQUIPMENT
THIS EQUIPMENT IS NOT TO BE USED TO
POWER TOOLS OR OTHER EQUIPMENT
UNLESS THE EQUIPMENT IS SPECIFICALLY
DESIGNED FOR THIS PURPOSE.
SEE INSTRUCTIONS FOR PROPER USE.
FOR MORE INFORMATION, CONTACT
THE MANUFACTURER.
© 2010 GEORGE A. KING COMPANY











Logo of the solar panel manufacturer, a stylized 'S' or similar symbol.

WARNING
ATTENTION
NEVER OPEN THE COVER OF THE INVERTER WHEN THE INVERTER IS PLUGGED INTO THE MAINS. THE INVERTER IS A HIGH VOLTAGE DEVICE AND THE COVER IS LIVE. THE COVER MUST BE KEPT CLOSED AT ALL TIMES. THE INVERTER IS A HIGH VOLTAGE DEVICE AND THE COVER IS LIVE. THE COVER MUST BE KEPT CLOSED AT ALL TIMES.

MC4
MC4
MC4
MC4

MC4

PC



1-800-4-A-SATELLITE
www.asatellite.com

9

ASAT
www.asatellite.com
Model: ASAT-1000
Power: 100W
Frequency: 12.1-13.0 GHz
Beamwidth: 1.2°
Gain: 30 dBi
Mounting: Pole Mount
Dimensions: 18" x 18" x 12"
Weight: 15 lbs
Warranty: 5 Years
CE, FCC, RoHS, ISO9001





2

INSTALLATION INSTRUCTIONS
SEE THE BACK OF THE DISH FOR A COMPLETE LIST OF PARTS AND ACCESSORIES.
© 2010 DIRECTV, INC. ALL RIGHTS RESERVED.

DirectV
RECEIVER
SERIES 6000
Model 6200
The receiver is designed to receive signals from a satellite dish. It is not to be used for any other purpose.
WARNING: Do not touch the receiver when it is powered on. The receiver can become very hot during operation.
CAUTION: Do not use the receiver in the presence of flammable vapors or gases. The receiver can cause a fire or explosion.
Do not use the receiver in the presence of lightning or other electrical storms. The receiver can be damaged by lightning or other electrical storms.
Do not use the receiver in the presence of strong magnetic fields. The receiver can be damaged by strong magnetic fields.
Do not use the receiver in the presence of strong radio frequency fields. The receiver can be damaged by strong radio frequency fields.
Do not use the receiver in the presence of strong electromagnetic fields. The receiver can be damaged by strong electromagnetic fields.
Do not use the receiver in the presence of strong electric fields. The receiver can be damaged by strong electric fields.
Do not use the receiver in the presence of strong magnetic fields. The receiver can be damaged by strong magnetic fields.
Do not use the receiver in the presence of strong radio frequency fields. The receiver can be damaged by strong radio frequency fields.
Do not use the receiver in the presence of strong electromagnetic fields. The receiver can be damaged by strong electromagnetic fields.
Do not use the receiver in the presence of strong electric fields. The receiver can be damaged by strong electric fields.





3

CAUTION
WARNING
FUSION
FC





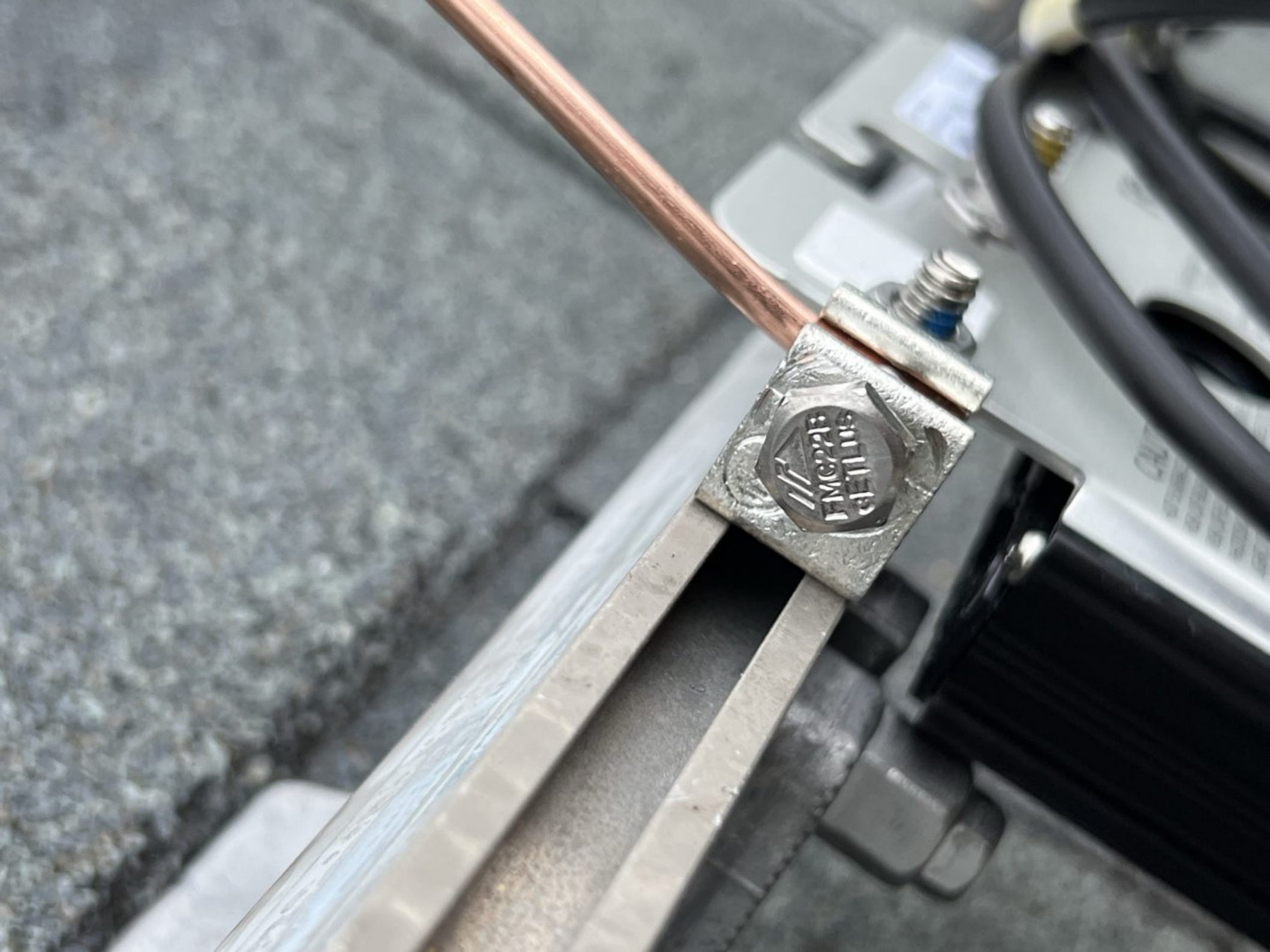




40mm













M18 REDLITHIUM XC5.0

SolarEdge Technologies Ltd.
SolarEdge Technologies GmbH/
Werner-Eckert-Straße 6/81829 Munich/Germany



SolarEdge Technologies Ltd.
Power Optimizer

Solaredge Technologies GmbH/
Werner-Eckert-Straße 6/81829
Munich/Germany

CAUTION
HOT SURFACES-TO REDUCE THE RISK OF BURNS-DO NOT TOUCH. RISK OF ELECTRIC SHOCK-ON THE PHOTOVOLTAIC ARRAY EXPOSED TO LIGHT, IT SUPPLIES A DC VOLTAGE TO EQUIPMENT. COVER PV MODULES WITH OPAQUE MATERIAL BEFORE CONNECTING OR DISCONNECTING THIS OPTIMIZER. DURING FAULT, ZERO CURRENT IS SOURCED INTO DC ARRAY BY CONVERTER.

WARNING ELECTRIC SHOCK HAZARD. THE DC CONDUCTORS OF THIS PHOTOVOLTAIC SYSTEM ARE UNGROUNDED AND MAY BE ENERGIZED.

AVERTISSEMENT

RISQUE DE CHOC ELECTRIQUE: QUAND LE CHAMP PHOTOVOLTAIQUE EST EXPOSE A LA LUMIERE, UNE TENSION EN CC EST FOURNIE A CET EQUIPEMENT. SURFACES CHAUDES: NE PAS TOUCHER, AFIN DE REDUIRE LES RISQUES DE BRULURES LE COURANT EST INJECTE PAR LE CONVERTISSEUR EN CAS DE DEFAILLANCE DANS LE MODULE PV EST NECESSAIRE.





1 2 3 4 5 6 7 8 9 10 11 12 13 14 15 16 17 18 19 20 21 22 23 24 25 26 27 28 29 30 31 32 33 34 35 36 37 38 39 40 41 42 43 44 45 46 47 48 49 50



Do Not Remove

© 2024 SolarEdge Technologies, Inc. All rights reserved. See the back of the device for more information.

CAUTION

DO NOT TOUCH THE SURFACE OF THIS DEVICE. IT IS HOT TO THE TOUCH. CONTACT WITH THE SURFACE OF THIS DEVICE MAY CAUSE BURNS OR OTHER INJURIES. DO NOT TOUCH THE SURFACE OF THIS DEVICE WITH WET HANDS. ALWAYS USE PROPER HANDLING TECHNIQUES WHEN INSTALLING OR REMOVING THIS DEVICE FROM THE PHOTOVOLTAIC SYSTEM.

WARNING ELECTRICAL SHOCK HAZARD. THE DC CONDUCTORS OF THIS PHOTOVOLTAIC SYSTEM ARE ENERGIZED AND MAY BE ENERGIZED.

AVERTISSEMENT

NE PAS TOUCHER LA SURFACE DE CE DISPOSITIF PHOTOVOLTAÏQUE. IL EST TRÈS CHAUD AU TOUCHER. LE CONTACT AVEC LA SURFACE DE CE DISPOSITIF PHOTOVOLTAÏQUE PEUT CAUSER DES BRÛLURES OU D'AUTRES BLESSURES. NE PAS TOUCHER LA SURFACE DE CE DISPOSITIF PHOTOVOLTAÏQUE AVEC DES MAINS HUMIDES. TOUJOURS UTILISER DE BONNES TECHNIQUES DE MANIPULATION LORS DE L'INSTALLATION OU DU DÉMONTAGE DE CE DISPOSITIF PHOTOVOLTAÏQUE DU SYSTÈME PHOTOVOLTAÏQUE.



SolarEdge Technologies Ltd.
Power Optimizer

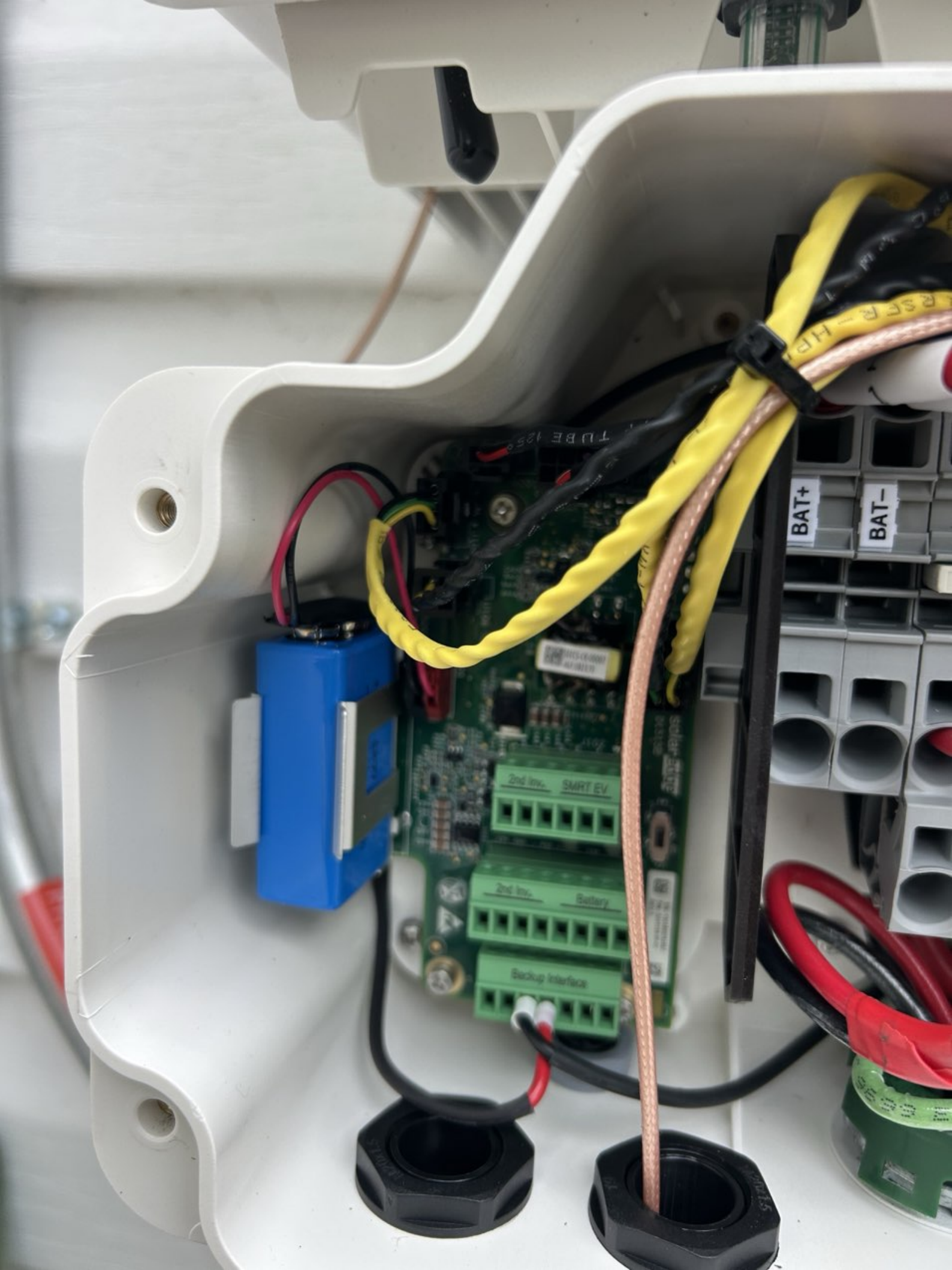
SolarEdge Technologies GmbH
Helmholtzstr. 10
Munich, Germany





PHOTOVOLTAIC





BAT+

BAT-

2nd Inv. SMART EV

2nd Inv. Battery

Backup Interface

TUBE 1259

WIRE MARKING
DATE: 10/15/11
BY: [illegible]

BAT+

BAT-

PV+

PV-

13

IEC60947-3 VDE0660

AC21 10A

U_e 690V
50-60Hz

AC15
V- 230/400
A 3 2

IP20

14

Made in Austria

ON

OFF

LOCK

ECH-SW-DQ64S

500V AC B600
WG 1,7Nm
amp RK5

Use on
able of
ore than
rms
at max.

Wire Cu 60/75°C

Single-phase Revenue Grade Plus Meter

SE-RGMTR

SE-RGMTR-1D-240C-B

PN: [Barcode]

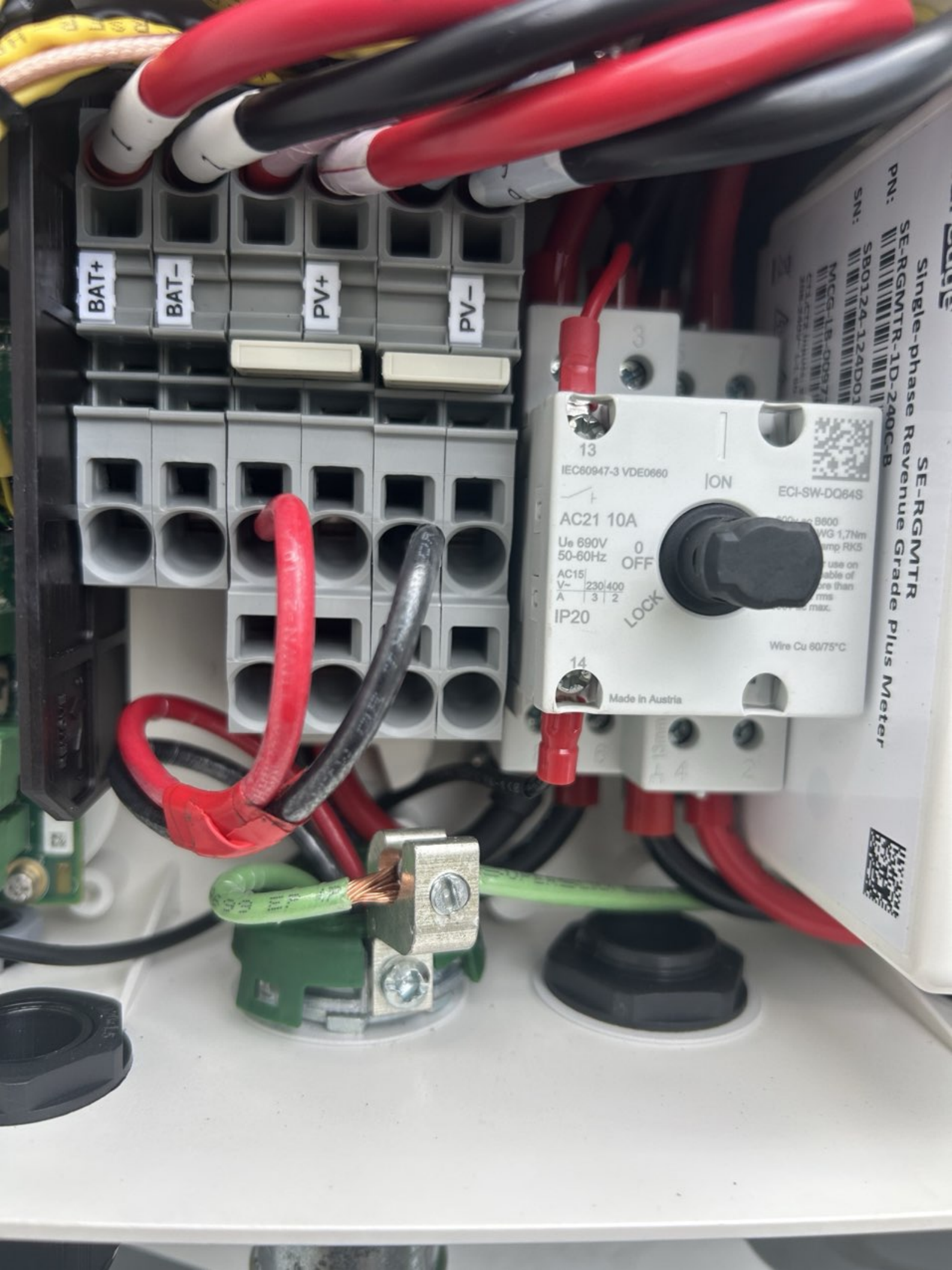
SN: [Barcode]

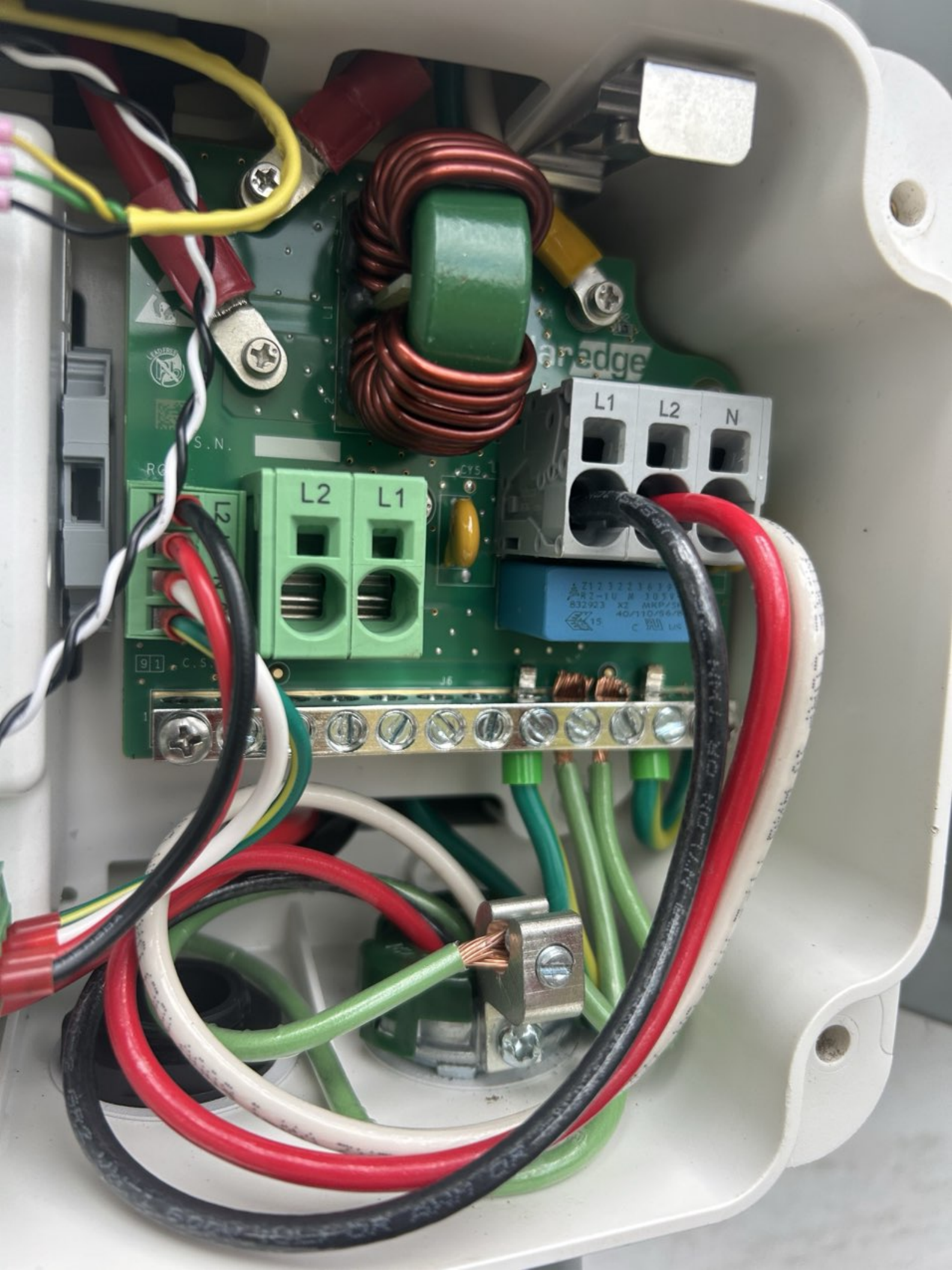
SB0124-12AD01

MCG-1B-00977



Green ground wire connected to a metal terminal block.





ar edge

L1 L2 N

L2 L1

Z123221A13
AR2-10 M 305V
832923 X2 MKP/50
40/110/46-7
15
C PAUL W

91 C.S.



S.N.

RG

CY5

J6

solaredge

Made in USA 
from imported parts

POWER SOURCE



solar edge SE5700H — US
Grid Support Utility Interactive Non — Isolated Photovoltaic Inverter With stand — alone Mode

Operating Voltage Range 270 — 480 Vac
 Max Input Current 31 Aac
 Max Continuous Output Power Grid connected 5700VAac @ 240V
 Max Continuous Output Power and Current stand — alone 7.6 KVA 32A
 11.4 KVA 48A
 Voltage Min — Nom — Max 211 — 240 — 264 Vac
 Max stand — alone Capacity 163 — 208 — 228 Vdc
 Max Continuous Output Current Grid Connected 11.4 KVA
 Max Output Fault Current 24Aac
 Max Utility Backfeed Current 74 Aac
 Frequency Min — Nom — Max 0 Aac
 Output Power Factor 59.3 — 80.0 — 80.5 Hz
 Max Ambient Temperature +/— 0.85 — 1
 Enclosure 80 C
 With integrated ground fault protection per NEC 690.35 (C)
 Type 1 Photovoltaic Arc — Fault Circuit — Protection
 ATTENTION: The maximum operating current of this system may be controlled electronically. Refer to manufacturer's instructions for more information.

IP65/NEMA 4X



Intertek
4004590



Wi-Fi Password:
2Z2x87P
Activation:
8c4 + Dgy0 + 1GD XYx4 WYyW nFeg yqv
WIFI MAC:
84:D6:C5:A0:02:7F

PN: SE5700H — USMNUBL15
 SN: SB0624 — 075085608 — DB



solar edge



PHOTOVOLTAIC RAPID SHUTDOWN SYSTEM

solar edge



ETL LISTED
CONFORMS TO
ANSI/UL 1741
CERTIFIED TO
CAN/CSA
C22.2 NO 107

Intertek
4004590



75085608-DB

Grid Support Interactive Inverter — CSA C22.3
 No. 9 — Basic or "Grid Support"
 CSA C22.3 No. 9 — Supplemental
 Contains FCC ID: 2A0PT-PLNX, IC: 20816-PLNX. The enclosed device complies with Part 15 of the FCC Rules. Operation is subject to the following two conditions:
 (1) this device may not cause harmful interference.
 (2) this device must accept any interference received, including interference that may cause undesired operation.
 PATENT MARKING NOTICE: SEE www.solaredge.com/patent
 MADE IN USA From Imported Parts

solaredge

StorEdge Connection Unit



Max DC Voltage (PV/Battery)	480 Vdc
Max DC Current (PV)	62 Adc
Max DC Power (PV)	23.2 kWdc
Max Continuous DC Current (Battery)	31 Adc
Max Continuous DC Power (Battery)	11.6 kWdc
Max AC Voltage	264 Vac
AC-Single Phase Frequency	50/60 Hz
Max AC Current (Grid)	48 Aac

For more details refer to the installation guide
Patent marketing notice: see WWW.SOLAREEDGE.COM/patent

DCD-1PH-US-P2H-F-I

PN:

SB0624-191D04645-EC

SN:

MADE IN U.S.A FROM IMPORTED PARTS



Intertek
4004590



solaredge

StorEdge Connection Unit



Max AC Current (Smart EV Charger)	40 Aac
Max Continuous Output Power (Smart EV Charger)	9600 W
Max Battery Energy Storage	32 kWh
Number of AC phases	L1, L2, N
Maximum AC short circuit current	74 Aac
Weight	30.2/ 13.7 lbs/kg
Ambient Temperature:	- 40°C ..60°C
Enclosure Rating:	IP65 / Type 4X

For more details refer to the installation guide
Patent marketing notice: see WWW.SOLAREEDGE.COM/patent
Use 90°C copper PV Wires only.
Revenue Grade ANSI C12.20
PHOTOVOLTAIC RAPID SHUTDOWN SYSTEM

DCD-1PH-US-P2H-F-I

PN:

SB0624-191D04645-EC

SN:

MADE IN U.S.A FROM IMPORTED PARTS



Intertek
4004590



solar**edge**

Made in USA 
from imported parts

P I O

DC DISCONNECT

ON

OFF



DANGER

DO NOT OPERATE

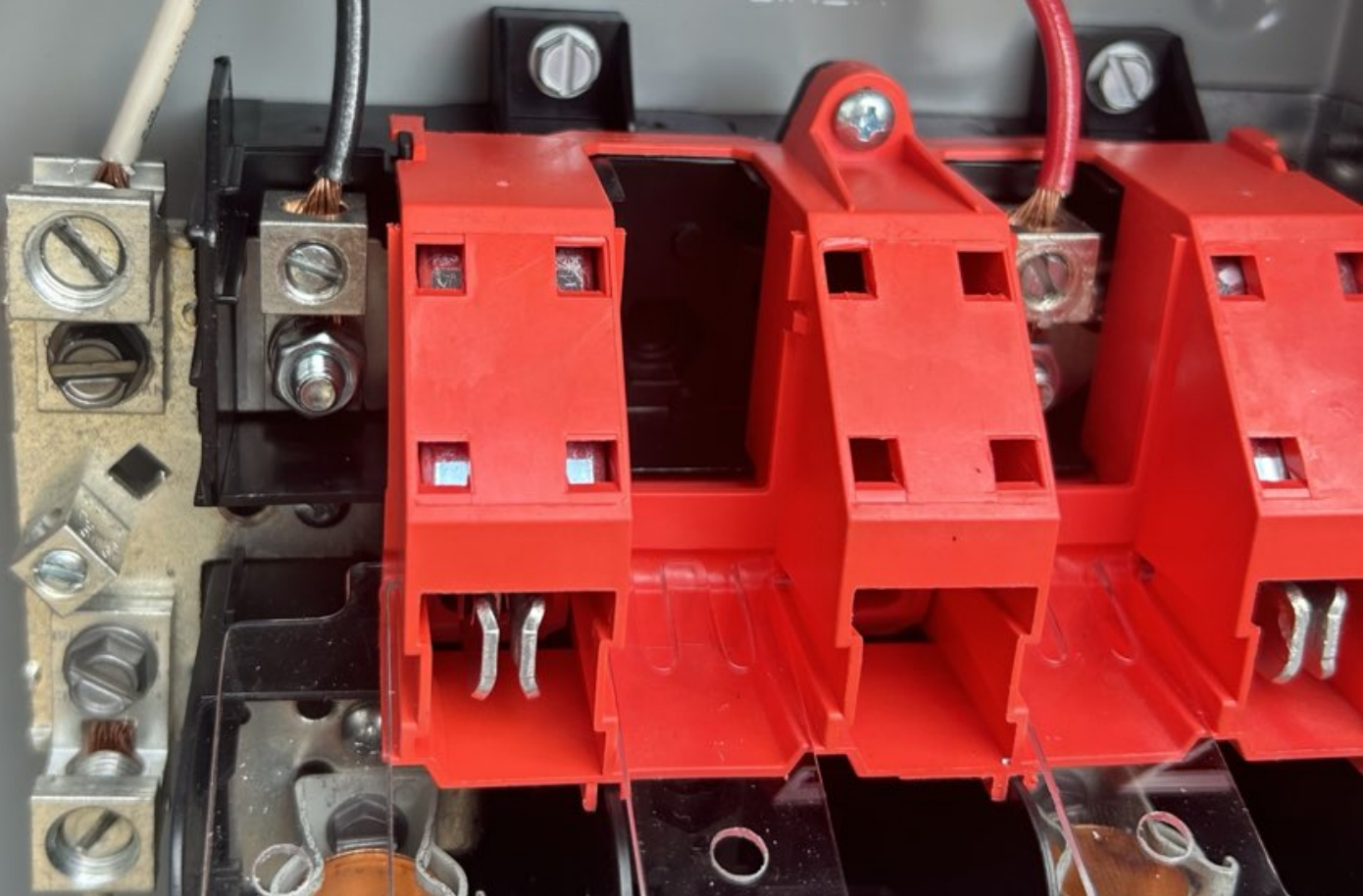
THIS LOCK/TAG MAY ONLY BE REMOVED BY:

NAME: TOP TIER

DEPT: _____
EXPECTED COMPLETION: _____
www.solarform.com • recorder# TA1120

solar**edge**

ONE LINE LINE



⚠ DANGER
Hazardous Voltage. Will cause death or serious injury.
• Do not open this shield unless the power supplying this switch is OFF.
• Snap shield to closed position before turning power ON.

⚠ DANGER
Hazardous Voltage. Will cause death or serious injury.
• Do not open this shield unless the power supplying this switch is OFF.
• Snap shield to closed position before turning power ON.

LINE LINE LINE

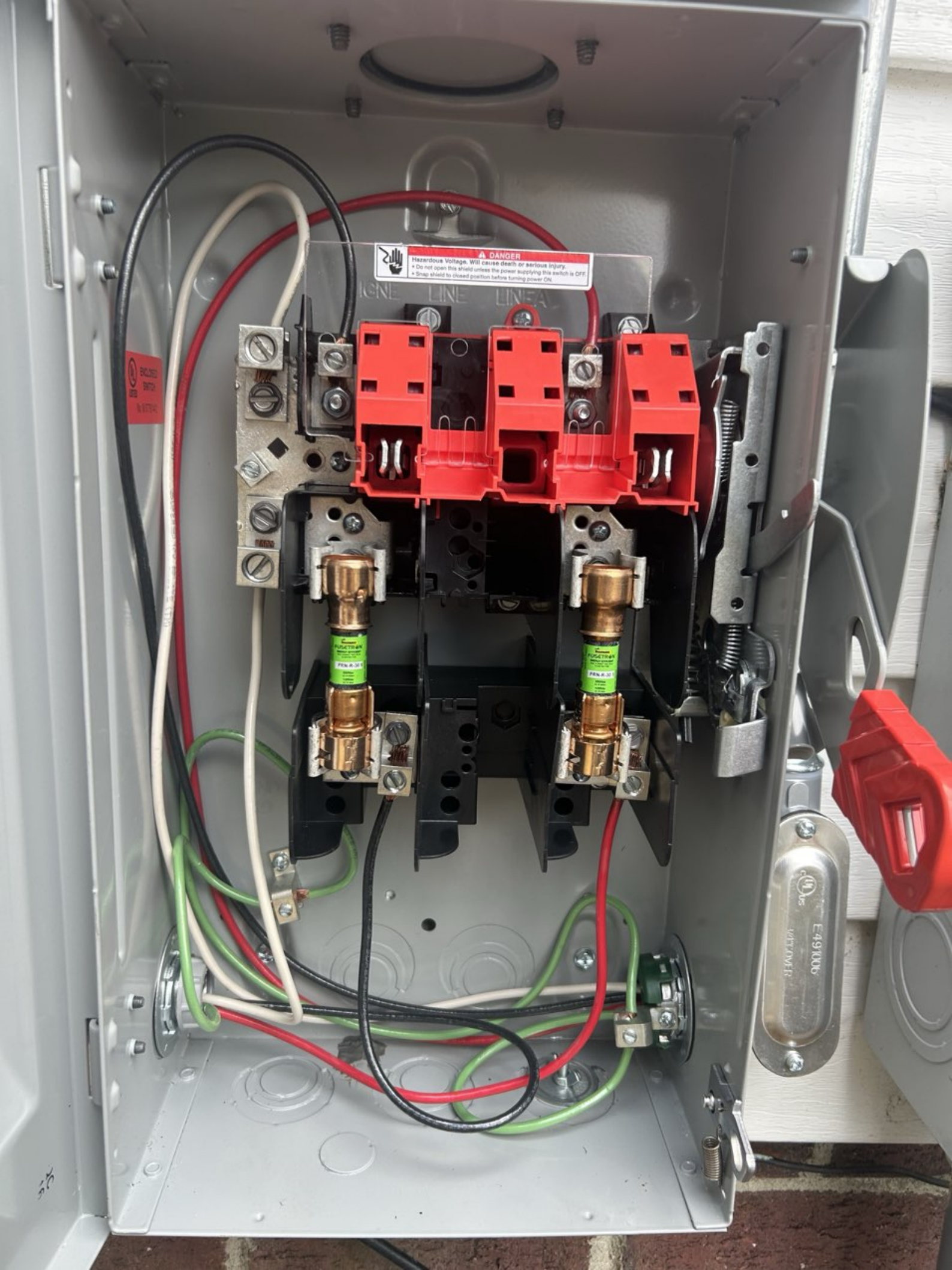
ENCLOSURE
TYPE
E491000

FUJETAIR
F7N-A-3T

FUJETAIR
F7N-A-3T

ENCLOSURE
TYPE
E491000
14717000

52



SIEMENS

Cat. No. HF222NR Fusible Heavy Duty Safety Switch Type VBII
 60 Amps Maximum 240 Volts AC (V~) Maximum 250 Volts DC (V-) Maximum
 Type 3R Rainproof Suitable for use as Service Equipment



Horsepower Ratings

	240 VAC 10	240 VAC ² 30	250 VDC
Std. HP (Std. Fuse) ¹	3	7 1/2	10
Max. HP (Time Delay)	10	15	—

Continuous load current not to exceed 80% of the rating of fuses employed in other than motor circuits.

Fuse and Short Circuit Information

When used with Class K fuses, Class H fuses or a UL Listed Circuit Breaker rated for 10,000 amperes, RMS symmetrical, 240 volts maximum, this switch is suitable for use on a circuit capable of delivering not more than 10,000 amperes, RMS symmetrical, 240 volts, maximum.

When used with Class R fuses and Class R fuse clip kit HR612 properly installed, this switch is suitable for use on a circuit capable of delivering not more than 200,000 amperes, RMS symmetrical, 240 volts maximum.

Danger — Unless Class R fuses are used, this switch may present a risk of fire and injury to persons if installed on circuits capable of delivering more than 10,000 amperes, RMS symmetrical.

When used with fuses marked with DC ratings, this switch is suitable for use on a circuit capable of delivering not more than the DC interrupting rating marked on the fuse, at the DC voltage rating marked on the fuse, up to a maximum of 10,000 amperes, 250 volts DC.

Danger — Unless fuses marked for an interrupting rating of 10,000 amperes at 250 volts DC are used, this switch may present a risk of fire and injury to persons if installed on circuits capable of delivering more than 10,000 amperes.

Renewable link fuses are not recommended.

▲ DANGER

Hazardous voltage. Will cause death or serious injury.

- Disconnect and lock out power supplying this switch before working on this switch.
- Turn off switch before removing or installing fuses if so equipped.
- Always use a properly rated voltage sensing device on all fuse clips (Fusible) or all load side terminals (Non-Fusible) to confirm switch is off.
- Close or replace cover before turning power on.

USE 60°C / 75°C COPPER OR ALUMINUM WIRE

Description	Wire Range	Wire Tightening Torque		Lug Mounting Torque
		35 lb-in. 14-10 AWG / 40 lb-in. 8 AWG	45 lb-in. 6-4 AWG / 50 lb-in. 3-2 AWG	
Line, Load & Main Neutral	14-2 AWG	35 lb-in. 14-10 AWG / 40 lb-in. 8 AWG	45 lb-in. 6-4 AWG / 50 lb-in. 3-2 AWG	80 lb-in.
Service Ground	14-4 AWG	35 lb-in. 14-10 AWG / 40 lb-in. 8 AWG	45 lb-in. 6-4 AWG	24 lb-in.

Inspection record number: _____

UL Listed Compression Lugs

(Refer to manufacturers instructions for proper installation)

Wire Size (AWG OR kcmil)	Bundy		Thomas & Betts		Ilexo	
	Cu Only	Cu / Al	Cu Only	Cu / Al	Cu Only	Cu / Al
14-10			256-30695-1263	60097		ACL - 8
8	YANCA-1 Box	YANCA3	54130	61102	CHB-8	ACL - 8
6	YANCA-1 Box	YANCA1	54130	61102	CHB-6	
4			54106	61112	CHB-4	

Accessories	HA161234	Neutral	HG61234	Class R Fuse Kit (Rejects Class H & K Fuses)	HR612
Aux. Switch (1NO - 1NC)	HA261234	Ground Lug Kit (Wire Range 14-4 AWG)	HG261234	Wire Grip Kit (CW)	HLC612
Aux. Switch (2NO - 2NC)	HA361234	Isolated Ground Lug Kit	HF2	Hub Kits ECH8106H100 (1") ECH8106H125 (1 1/4") HSR225SW	
Low Voltage Aux. Sw. (1NO - 1NC)	HCL623	Fuse Puller (2 per kit)	HL612	Handle / Handle Guard	HF61234
Compression Lug Neutral Barrier Kit	HF622	Wire Grip Kit (AL)	HAM123	Door	HF222NRDOOR
Line Base	H6622	Mechanism			

Protected by one or more of the following US Patents: 6,134,979, 6,356,460, 5,945,605, 5,990,439.

¹ Suitable for 2-Phase, 3-Phase, Grounded 3-Phase Systems.

² The starting current of motors more than the standard horsepower or kilowatt ratings may require the use of fuses with appropriate time delay characteristics.

³ If compression lugs are used for the neutral, order compression lug neutral barrier kit HCL623.

Siemens Industry, Inc.
 Peachtree Corners, GA 30092 USA
<http://www.usa.siemens.com/powerdistribution>
 Assembled in Mexico

Pc. No. 502066409

J2

30/60 H
 MAR 1 9 2024
 TURNO 2

2C

⚠ DANGER
Hazardous Voltage. Will cause death or serious injury.
• Do not open this shield unless the power supplying this switch is OFF.
• Snap shield to closed position before turning power ON.



SIEMENS

**RAPID SHUTDOWN
SWITCH FOR
SOLAR PV SYSTEM**

ON

**Heavy Duty
Safety Switch**
60A 240VAC, 250VDC
Horsepower Rated

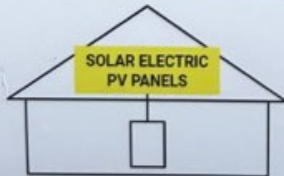


⚠ DANGER

Hazardous Voltage.
Will cause death or
serious injury.
Turn off before replacing
any fuse. Disconnect
power before working on
this switch. Close cover
before turning power on.

OFF

**SOLAR PV SYSTEM
EQUIPPED WITH
RAPID SHUTDOWN**



TURN RAPID SHUTDOWN SWITCH TO
THE "OFF" POSITION TO SHUT DOWN
PV SYSTEM AND REDUCE
SHOCK HAZARD IN THE ARRAY

AC DISCONNECT
PHOTOVOLTAIC SYSTEM
POWER SOURCE

RATED AC
OUTPUT CURRENT **24** AMPS
NOMINAL OPERATING
AC VOLTAGE **240** VOLTS



WARNING

ELECTRIC SHOCK HAZARD

TERMINALS ON THE LINE AND
LOAD SIDES MAY BE ENERGIZED
IN THE OPEN POSITION

HAZARD OF ELECTRICAL
SHOCK OR BURN
SERVICE BY UTILITY
AUTHORIZED PERSONNEL ONLY
DO NOT TAMP COVER OR REMOVE THIS LABEL
MILBANK 300-000-0000-0000-0000-0000

 **CAUTION** 
SOLAR ELECTRIC SYSTEM CONNECTED


CONTAINS FCC ID: R17P019186 CONTAINS IC: 53844-0019186
Landis+Gyr **GRIDSTREAM RF**
90BAD2F1 
MODULE MODEL: GB-2019-0100-0000-0000-0000-0000



Type **FOCUS AXRe-SD**
FORM 25 CL200 240V 3W 60Hz TA=30 Kh 7.2

CENTRAL EMC

166 546 948
934 0621 
Landis+Gyr

 **WARNING**
DUAL POWER SUPPLY
SOURCES: UTILITY GRID
AND PV SOLAR
ELECTRIC SYSTEM

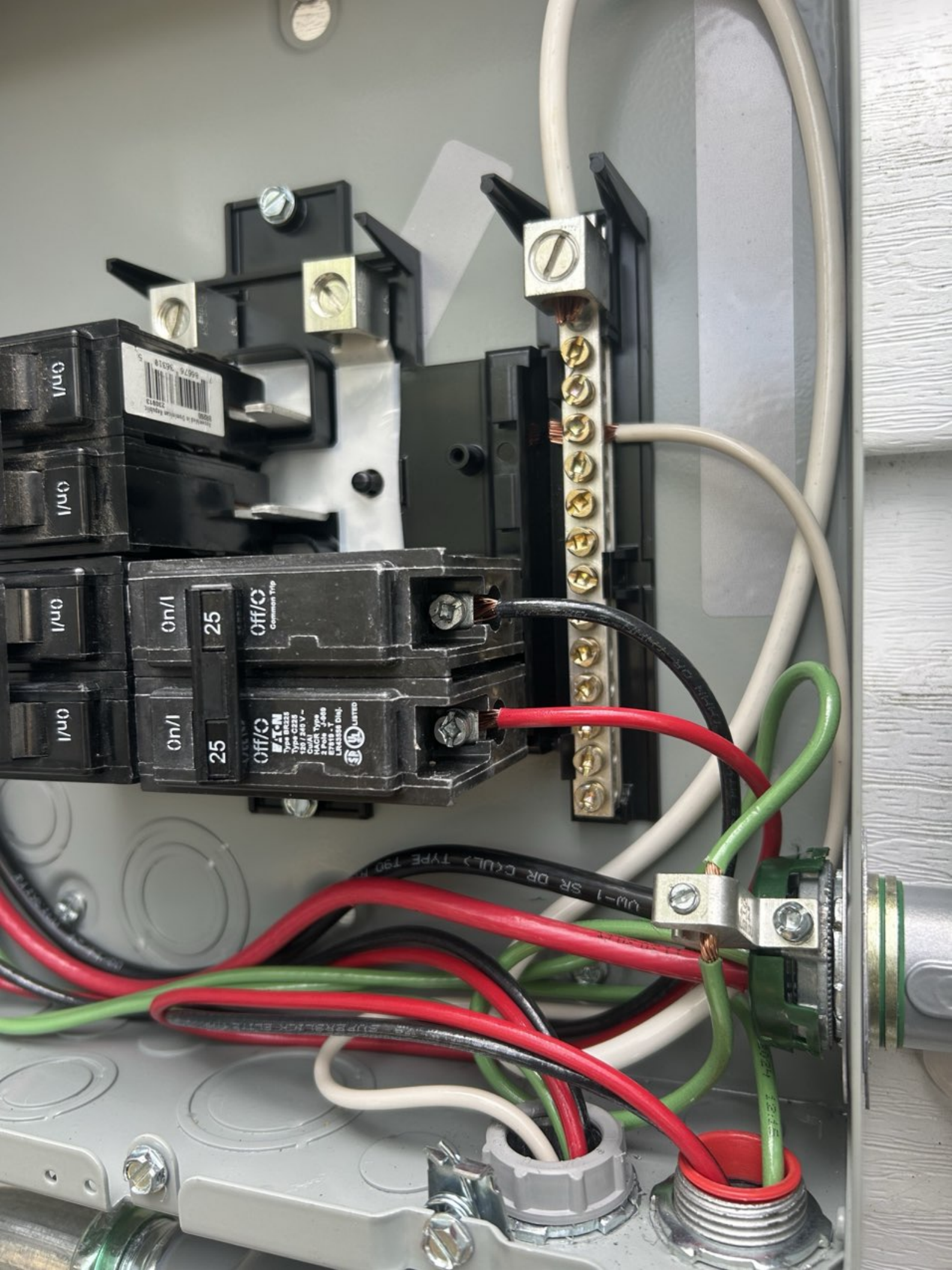
PHOTOVOLTAIC
SYSTEM kWh METER

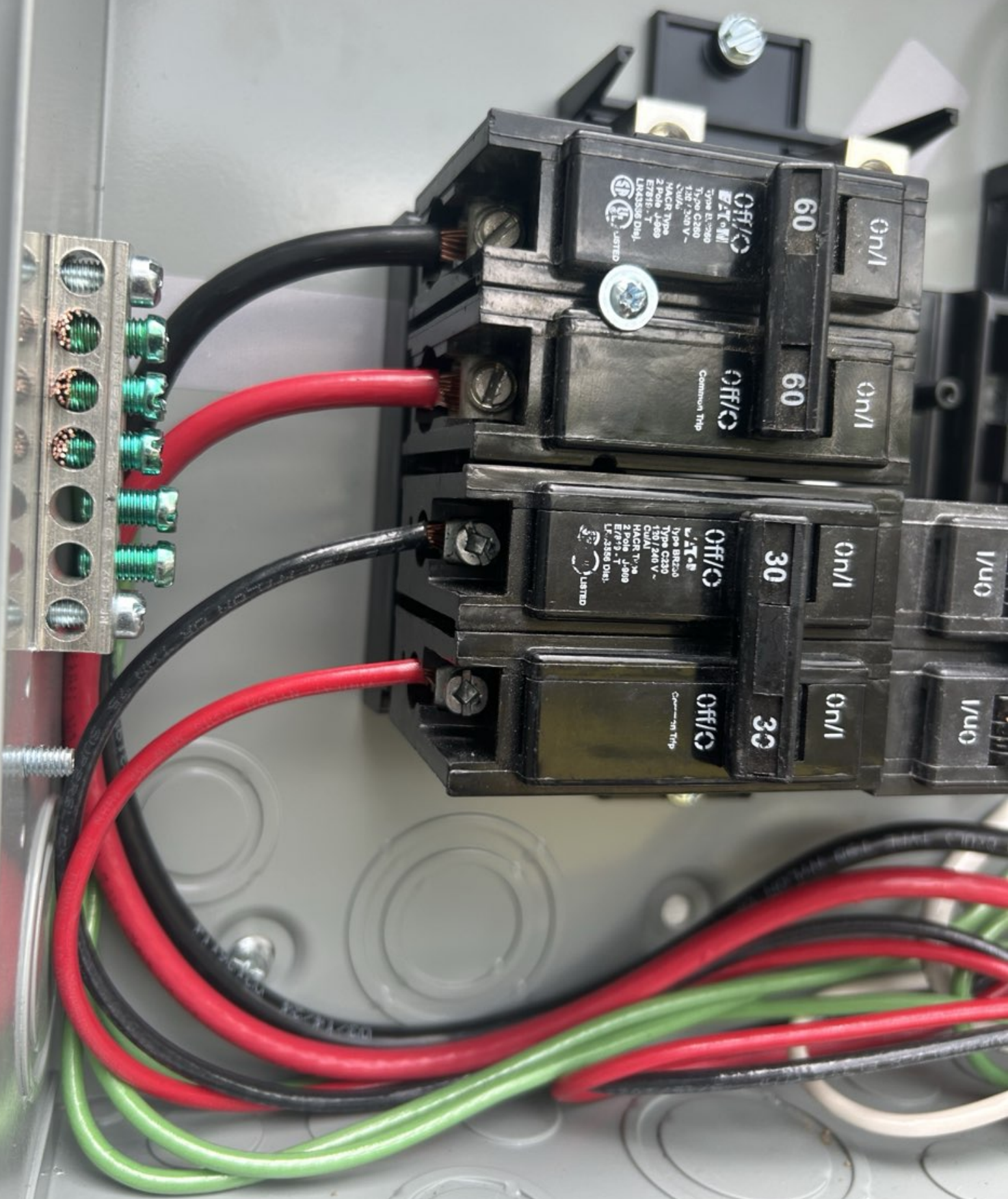
MILBANK
TYPE 3R ENCLOSURE

ENCLOSED PANELBOARD
ISSUE NO. 3127100
F344@ 2
When making technical
inquiries, please refer to
this number & Cat. No.
30-4333A

60 On/I
60 On/I
30 On/I
30 On/I
25 On/I
25 On/I







OFF/O
Eaton
Type B-C250
Type C250
125/250 V-
NACR Type
2 Pole 1 Pole
EZ915 - T
LINKAGE Del.
UL LISTED

60

On/1

OFF/O
Common Trip

60

On/1

OFF/O
Eaton
Type B-C250
Type C250
125/250 V-
NACR Type
2 Pole 1 Pole
EZ915 - T
LINKAGE Del.
UL LISTED

30

On/1

I/uo

OFF/O
Common Trip

30

On/1

I/uo



EATON

BR816L125RP

TYPE 3R ENCLOSURE - RAINPROOF
GABINETE TUPO 3R - A PRUEBA DE LLUVIA

125 AMPS MAX. (SEE MAIN BREAKER RATING)
120/240 VAC/CA 1PH/3W/4W/5W/3L/4L/5L
200Y/120 VAC/CA 1PH/3W/4W/5W/3L/4L/5L
240 VAC/CA 1PH/3W/4W/5W/3L/4L/5L
60 Hz MAX. (USE ONLY 240 VAC BREAKERS; SOLAMENTE UTILICE INTERRUPTORES 240 VCA)

SHORT CIRCUIT RATING: 10,000 RMS SYM AMPS, 240 VAC MAX.
THE SHORT CIRCUIT RATING IS LIMITED TO THE LOWEST INTERRUPTING CAPACITY OF ANY DEVICE INSTALLED.
CAPACIDAD DE CORTOCIRCUITO: 10,000 RMS SYM AMPS, 240 VAC MAX. LA CLASIFICACION DE CORTOCIRCUITO SE LIMITA A LA CAPACIDAD DE INTERRUPTOR MAS BAJA DE CUALQUIER DISPOSITIVO INSTALADO.

TENANT MAIN CIRCUIT BREAKER / INTERRUPTOR DE CIRCUITO PRINCIPAL DEL INQUILINO	BRANCH BREAKERS / INTERRUPTOR DE RAMAL	SHORT CIRCUIT RATING / CAPACIDAD DE CORTO CIRCUITO
BRH	BR, BD, BRD, BQ	22,000
CSR, BWH, CCVH	BQC, BRAF, BRSN	25,000
BRHH	BRWH, GFGB, GFEP	42,000
BRX	CH, CHL, CHT, CHFP	65,000

ADDITIONAL OR REPLACEMENT BREAKERS SHALL BE OF THE SAME MANUFACTURER AND TYPE AND SHALL HAVE AN INTERRUPTING RATING EQUAL TO OR GREATER THAN THE INTERRUPTING RATING OF ANY CIRCUIT BREAKER INSTALLED.
LOS INTERRUPTORES ADICIONALES O DE REEMPLAZO SERAN DE LA MISMA FABRICANTE Y TIPO, Y DEBERA TENER UNA CLASIFICACION INTERRUPTORA IGUAL O MAYOR QUE LA CLASIFICACION INTERRUPTORA DE CIRCUITO INSTALADO.

USE TYPE BR, BD, BQ, BOC, BRD, BRAF, BRSN, BRWH, GFGB, or GFEP BREAKERS.
USE TIPO BR, BD, BQ, BOC, BRD, BRAF, BRSN, BRWH, GFGB, or GFEP INTERRUPTORES.

BREAKER TERMINALS SUITABLE FOR AL-CU WIRE WHEN SO MARKED. REFER TO MARKINGS ON BREAKER.
TERMINALES DE INTERRUPTOR APTO PARA ALAMBRE AL-CU CUANDO SE MARCA. CONSULTE LAS MARCAS EN EL INTERRUPTOR.

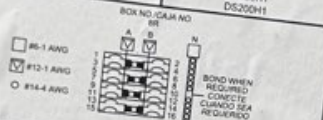
BREAKER HANDLE IN MID POSITION INDICATES BREAKER IS "OFF". TO RESTORE SERVICE, MOVE HANDLE TO EXTREME "OFF", THEN TO "ON". EL MANGO DEL INTERRUPTOR EN POSICION MEDIA INDICA QUE EL INTERRUPTOR ESTA "APAGADO". PARA RESTAURAR EL SERVICIO, MOVER EL MANGO A EXTREMO, LUEGO A "ENCENDIDO".

FOR UL TYPE BR, HOP or TYPE CH SERVICE ENTRANCE MAIN BREAKERS, INSTALL SE BARRIER KIT # TIMCB30 (ORDER TWO KITS FOR 3 POLE MAIN BREAKERS).

PARA INTERRUPTORES PRINCIPALES DE ENTRADA DE CERICO UL TYPE BR, HOP o TYPE CH, INSTALE EL KIT DE PARRERA SE # TIMCB30 (PIDA DOS KITS PARA INTERRUPTORES PRINCIPALES DE 3 POLOS).

FOR RAINPROOF FITTINGS, REFER TO TABLE BELOW.
PARA ACCESORIOS IMPERMEABLES, CONSULTE LA TABLA A CONTINUACION

HUB SIZE / TAMANO DE CAMPANA	EATON CAT. NO.
3/4" (19.05 mm)	DS075H1
1" (25.40 mm)	DS100H1
1-1/4" (31.75 mm)	DS150H1
1-1/2" (38.10 mm)	DS150H1
2" (50.80 mm)	DS200H1



TORQUE WIRE PRESSURE SCREW(S) AS FOLLOWS:
APRIETE LOS TORNILLOS DE SUJECION DE CABLE A LOS VALORES DE TORQUE SIGUIENTES:

WIRE SIZE / CABLE CALIBRE	LB-IN (N-M)	LB-IN (N-M)
#12-10	20 (2.26)	35 (3.96)
#8	25 (2.82)	40 (4.52)
#6-4	35 (3.96)	45 (5.08)
#3-2/0		50 (5.65)

TO CLOSE UNUSED OPENINGS IN COVER, USE EATON CAT. NO. BRFP.
PARA CERRAR LAS ABERTURAS NO UTILIZADAS EN LA CUBIERTA, USE EATON CAT. NO. BRFP.

SUITABLE FOR USE AS SERVICE EQUIPMENT WHEN A MAIN BREAKER IS USED OR WHEN NOT MORE THAN SIX SERVICE DISCONNECTING MEANS ARE PROVIDED AND WHEN NOT USED AS A LIGHTING AND APPLIANCE PANELBOARD.
APTO PARA USO COMO EQUIPO DE SERVICIO CUANDO SE UTILIZA UN INTERRUPTOR PRINCIPAL O CUANDO NO SE PROPORCIONEN MAS DE SEIS MEDIOS DE DESCONEXION DE SERVICIO Y CUANDO NO SE UTILICE COMO UN PANEL DE ILUMINACION Y APARATO.

THIS DEVICE ACCEPTS EATON TYPE GBK GROUND BARS. WIRE HOLES ARE SUITABLE FOR (1) #14-4 WIRE OR UP TO (3) #14-10 WIRES.
ESTE DISPOSITIVO ACEPTA BARRAS DE TIERRA GBK TIPO EATON. LOS AGUJEROS DE ALAMBRE SON ADECUADOS PARA (1) ALAMBRE # 14-4 O HASTA (3) ALAMBRES # 14-10.

WHEN A MAIN BREAKER IS BACK-FED, HOLD-DOWN SCREW KIT EATON CAT. NO. BREQS125 IS REQUIRED.
CUANDO UN INTERRUPTOR PRINCIPAL ESTA ATRASADO, KIT DE TORNILLO DE SUJECION EATON CAT. NO. BREQS125 SE REQUIERE.

Main

P.V SOLAR

P.V SOLAR



SOLAR PV BREAKER
BREAKER IS BACKFED
DO NOT RELOCATE



Air condition
Down

EATON

BR816L125RP

TYPE 3R ENCLOSURE - RAINPROOF GABINETE TUPO 3R - A PRUEBA DE LLUVIA

125 AMP MAX (SEE MAIN BREAKER RATING)
120/240 VAC/CA 1PH/3ASE-3W/3LDS
200/240 VAC/CA 1PH/3ASE-3W/3LDS
240 VAC/CA 1PH/3ASE
60 Hz MAX (USE ONLY 240 VAC BREAKERS! SOLOAMENTE UTILICE INTERRUPTORES 240 VCA)

SHORT CIRCUIT RATING: 10,000 RMS SYM AMPS, 240 VAC MAX.
THE SHORT CIRCUIT RATING IS LIMITED TO THE LOWEST INTERRUPTING CAPACITY OF ANY DEVICE INSTALLED.
CAPACIDAD DE CIRCUITO CORTO: 10,000 RMS SYM AMPS, 240 VAC MAX. LA CLASIFICACION DE CIRCUITO SE LIMITA A LA CAPACIDAD DE INTERRUPTOR MAS BAJA DE CUALQUIER DISPOSITIVO INSTALADO.

TENANT MAIN CIRCUIT BREAKER / INTERRUPTOR DE CIRCUITO PRINCIPAL DEL INQUILINO	BRANCH BREAKERS / INTERRUPTOR DE RAMAL	SHORT CIRCUIT RATING / CAPACIDAD DE CIRCUITO CORTO
BRH	BR, BD, BRD, BQ	22,000
CSR, BRWH, CCVH	BQC, BRAF, BRSN	25,000
BRHH	BRWH, GFCB, GFEP	42,000
BRX	CH, CH3, CHT, CHG2	65,000

ADDITIONAL OR REPLACEMENT BREAKERS SHALL BE OF THE SAME MANUFACTURER AND TYPE AND SHALL HAVE AN INTERRUPTING RATING EQUAL TO OR GREATER THAN THE INTERRUPTING RATING OF ANY CIRCUIT BREAKER INSTALLED.
LOS INTERRUPTORES ADICIONALES O DE REEMPLAZO SERAN DE LA MISMA FABRICANTE Y TIPO, Y DEBERA TENER UNA CLASIFICACION INTERRUPTORA IGUAL O MAYOR QUE LA CLASIFICACION INTERRUPTORA DE CIRCUITO INSTALADO.

USE TYPE BR, BD, BQ, BOC, BRD, BRAF, BRSN, BRWH, GFCB, or GFEP BREAKERS.
USE TIPO BR, BD, BQ, BOC, BRD, BRAF, BRSN, BRWH, GFCB, or GFEP INTERRUPTORES.

BREAKER TERMINALS SUITABLE FOR AL-CU WIRE WHEN SO MARKED. REFER TO MARKINGS ON BREAKER.
TERMINALES DE INTERRUPTOR APTO PARA ALAMBRE AL-CU CUANDO SE MARCA. CONSULTE LAS MARCAS EN EL INTERRUPTOR.

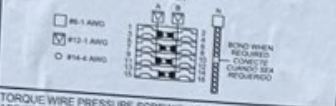
BREAKER HANDLE IN MID POSITION INDICATES BREAKER IS "OFF". TO RESTORE SERVICE, MOVE HANDLE TO EXTREME "OFF", THEN TO "ON". EL MANIGO DEL INTERRUPTOR EN POSICION MEDIA INDICA QUE EL INTERRUPTOR ESTA "APAGADO". PARA RESTAURAR EL SERVICIO, MOVER EL MANIGO A EXTREMO "LEJOS A TENCENDIDO".

FOR UL TYPE BR, HOP or TYPE CH SERVICE ENTRANCE MAIN BREAKERS, INSTALL SE BARRIER KIT # TMCB30 (ORDER TWO KITS FOR 3 POLE MAIN BREAKERS).
PARA INTERRUPTORES PRINCIPALES DE ENTRADA DE CERCIJO UL TYPE BR, HOP o TYPE CH, INSTALE EL KIT DE BARRERA SE # TMCB30 (PARA DOS KITS PARA INTERRUPTORES PRINCIPALES DE 3 POLOS).

UL FILE / ARCHIVO: E8741

FOR RAINPROOF FITTINGS, REFER TO TABLE BELOW
PARA ACCESORIOS IMPERMEABLES, CONSULTE LA TABLA A CONTINUACION

PIPE SIZE / TAMAÑO DE CAMBIA	EATON CAT. NO.
3/4" (19.05 mm)	D817RH
1" (25.40 mm)	D810RH1
1-1/4" (31.75 mm)	D812SH1
1-1/2" (38.10 mm)	D810H1
2" (50.80 mm)	D820H1



TORQUE WIRE PRESSURE SCREWS AS FOLLOWS:
APRIETE LOS TORNILLOS DE SUJECION DE CABLE A LOS VALORES DE TORQUE SIGUIENTES:

WIRE SIZE / CABLE GAUGE	LB-IN (N-M)	LB-IN (N-M)
#12-10	20 (2.26)	35 (3.96)
#8	25 (2.82)	40 (4.52)
#6-4	35 (3.96)	45 (5.08)
#3-2/0		50 (5.65)

TO CLOSE UNUSED OPENINGS IN COVER, USE EATON CAT. NO. BRFP.
PARA CERRAR LAS ABERTURAS NO UTILIZADAS EN LA CUBIERTA, USE EATON CAT. NO. BRFP.

SUITABLE FOR USE AS SERVICE EQUIPMENT WHEN A MAIN BREAKER IS USED OR WHEN NOT MORE THAN SIX SERVICE DISCONNECTING MEANS ARE PROVIDED AND WHEN NOT USED AS A LIGHTING AND APPLIANCE PANELBOARD.
APTO PARA USO COMO EQUIPO DE SERVICIO CUANDO SE UTILIZA UN INTERRUPTOR PRINCIPAL O CUANDO NO SE PROPORCIONEN MAS DE SEIS MEDIOS DE DESCONEXION DE SERVICIO Y CUANDO NO SE UTILICE COMO UN PANEL DE ILUMINACION Y APARATO.

THIS DEVICE ACCEPTS EATON TYPE GBK GROUND BARS. WIRE HOLES ARE SUITABLE FOR (1) #14-4 WIRE OR UP TO (3) #14-10 WIRES.
ESTE DISPOSITIVO ACEPTA BARRAS DE TIERRA GBK TIPO EATON. LOS AGUJEROS DE ALAMBRE SON ADECUADOS PARA (1) ALAMBRE # 14-4 O HASTA (3) ALAMBRES # 14-10.

WHEN A MAIN BREAKER IS BACK-FED, HOLD-DOWN SCREW KIT EATON CAT. NO. BRQ5125 IS REQUIRED.
CUANDO UN INTERRUPTOR PRINCIPAL ESTA ATRASADO, KIT DE TORNILLO DE SUJECION EATON CAT. NO. BRQ5125 SE REQUIERE.

REV. 67

Main

P.V SOLAR

P.V SOLAR



SOLAR PV BREAKER IS BACK-FED
DO NOT RELOCATE

 **CAUTION** 
SOLAR ELECTRIC SYSTEM CONNECTED

 **WARNING**
POWER SOURCE
OUTPUT CONNECTION
DO NOT RELOCATE THIS
OVERCURRENT DEVICE

**RAPID SHUTDOWN
SWITCH FOR
SOLAR PV SYSTEM**

DANGER
This device is designed to be used in accordance with the instructions provided in the user manual. It is not to be used for any other purpose. Failure to follow the instructions may result in injury or property damage. For more information, please contact the manufacturer.

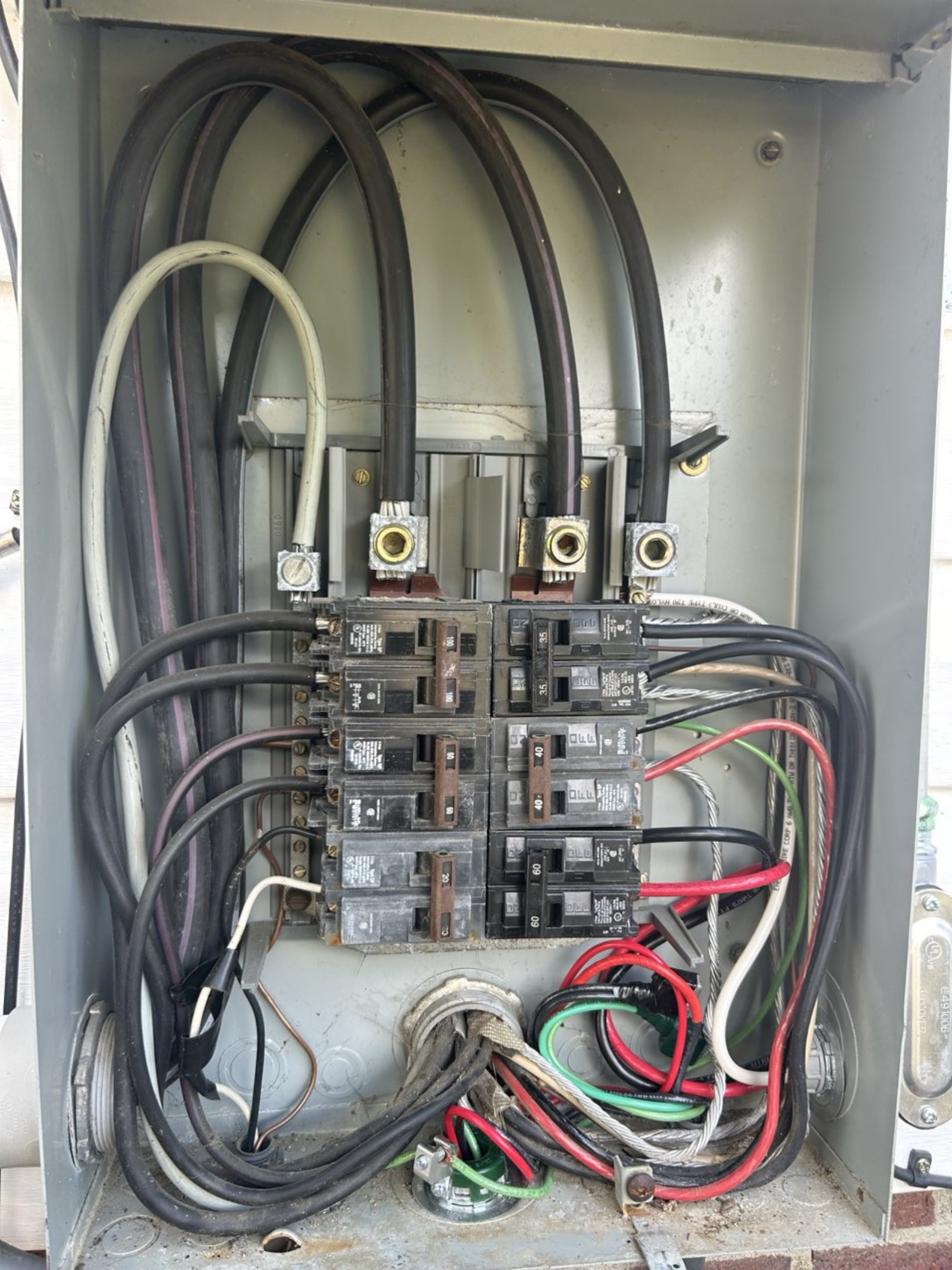
1234567890
11/15/10
1234567890

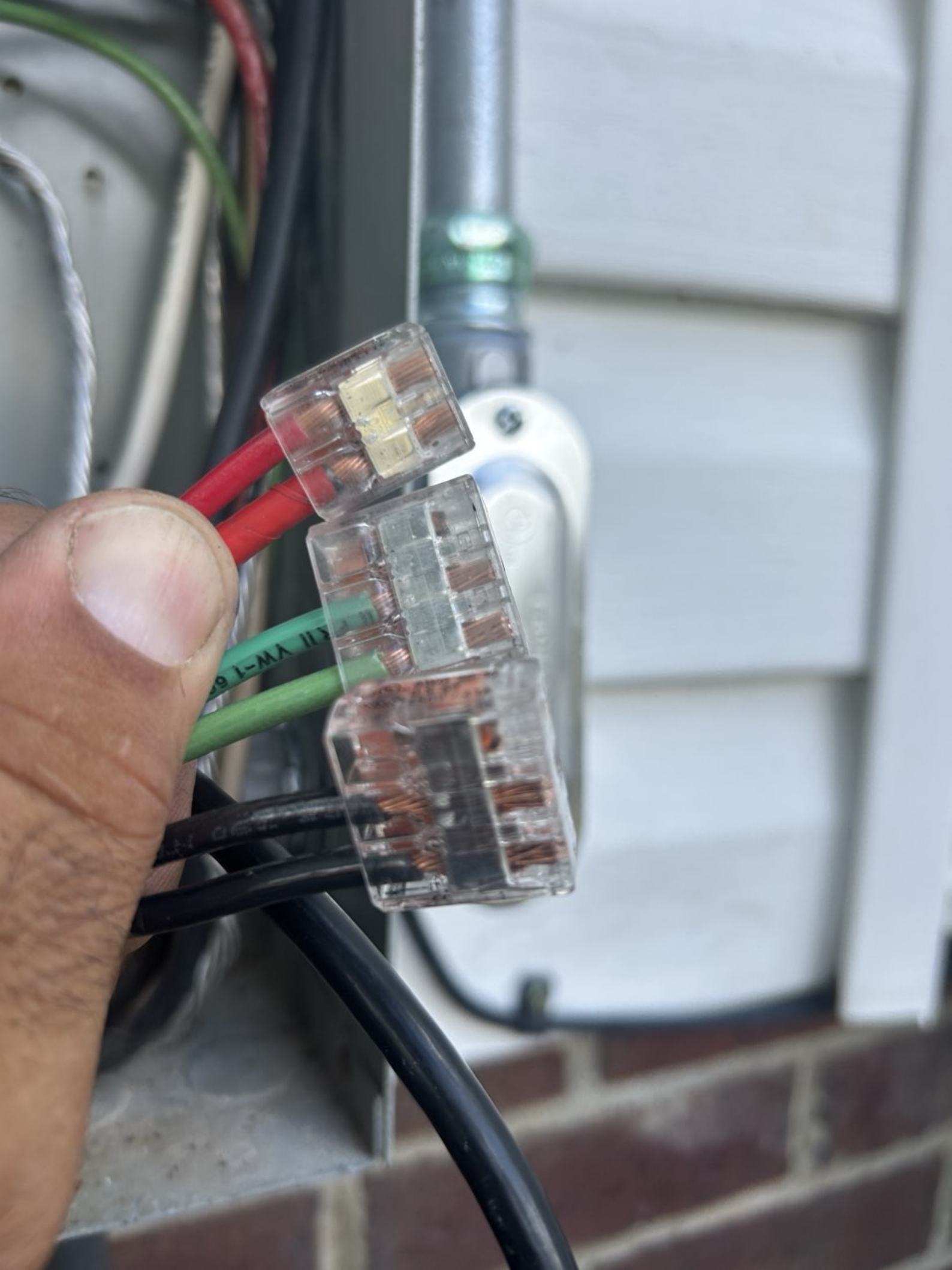
1234567890
11/15/10
1234567890

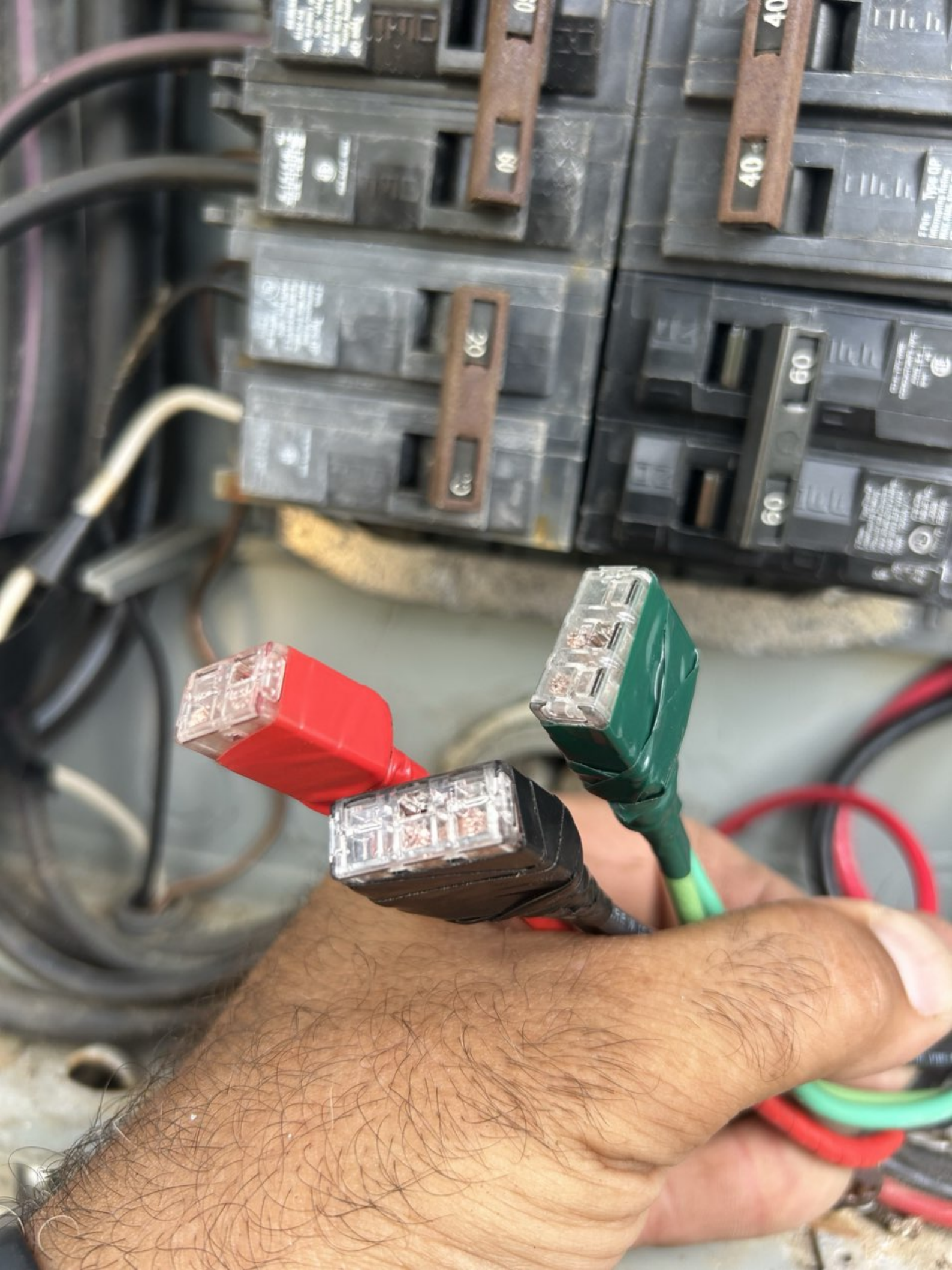


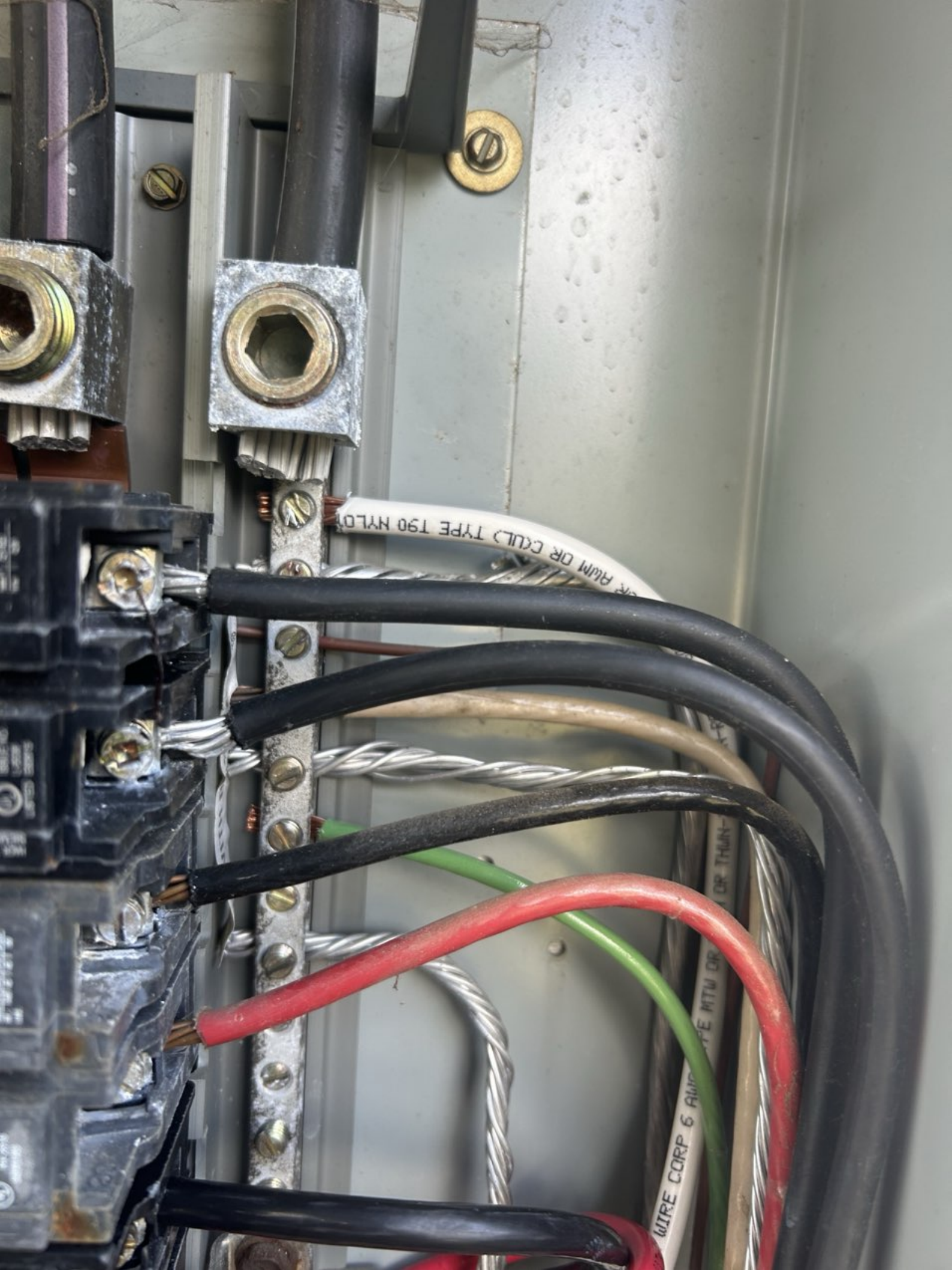
DANGER
DO NOT OPERATE
THIS LOCK/TAG MAY ONLY BE REMOVED BY:
TOP TIER











RUM OR CUL) TYPE 190 NYLO

WIRE CORP 6 AMP...
...OR THAN...



60

60

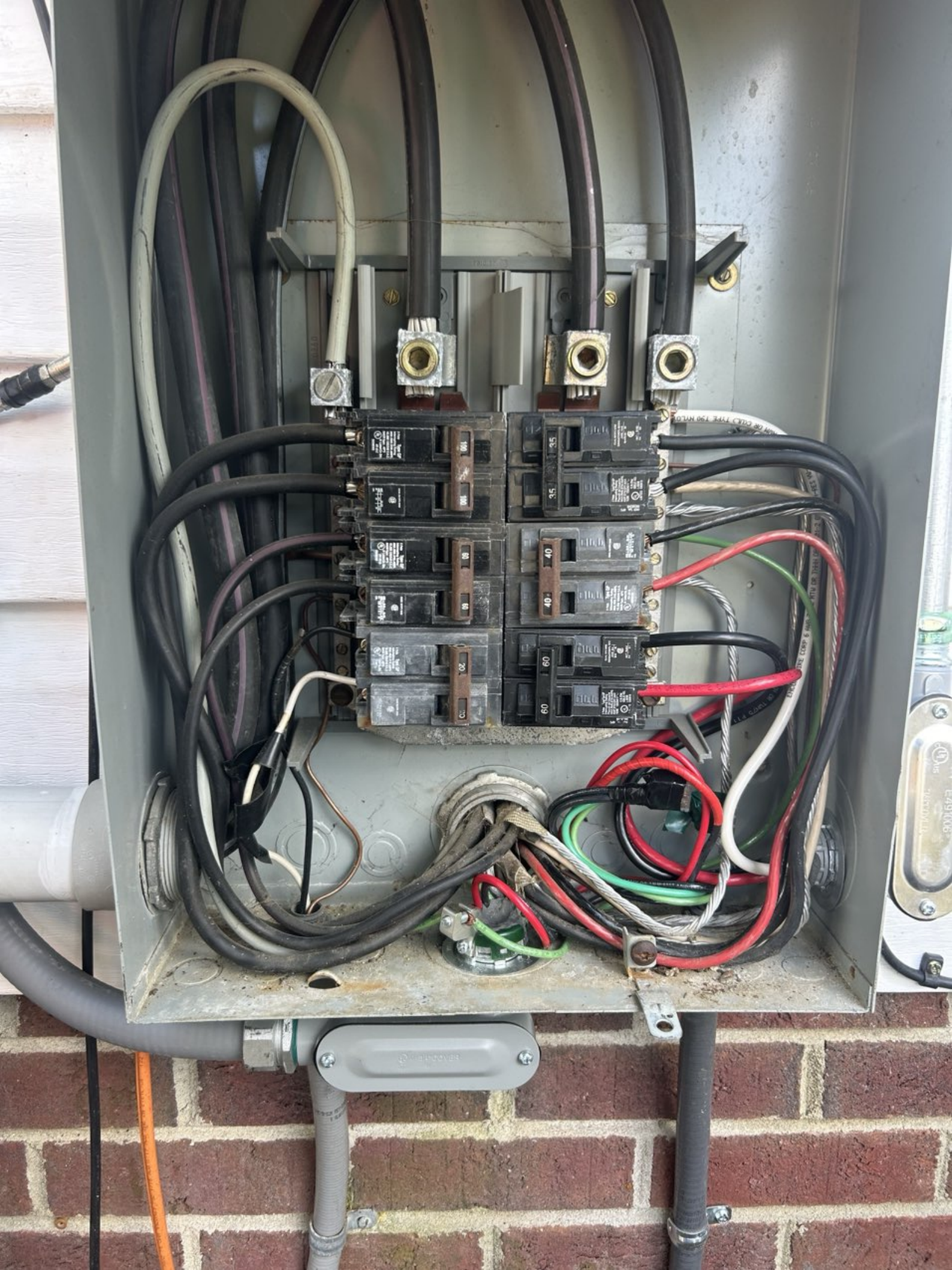
RE CORP 6 AWG TYP

OR TWINTS FT

160V-OR-AWH-1117 AND 1123

RUM-3622 EP 1231

3/4" COVER



MAIN

1
2
3
4
5
6
7
8
9

UP STAIRS

100
100
60
60
20
C

35
35
40
40
60
60

2
4
6
8
10
12

Down

Subpanel

Subpanel



 **CAUTION** 
SOLAR ELECTRIC SYSTEM CONNECTED

 **WARNING**
DUAL POWER SUPPLY
SOURCES: UTILITY GRID
AND PV SOLAR
ELECTRIC SYSTEM

SOLAR POINT OF INTERCONNECTION















