











We aim for a greener tomorrow with completely clean energy solutions

**Q.TRON BLK M-G2+ 425**

PERFORMANCE AT STANDARD TEST CONDITIONS\*

Nominal Power* (±5W/-0W)	$P_{MPP}$	[W]	425
Short circuit current*	$I_{sc}$	[A]	13.66
Open circuit voltage*	$V_{oc}$	[V]	39.03
Current at maximum power	$I_{MPP}$	[A]	12.98
Voltage at maximum power	$V_{MPP}$	[V]	32.74
Maximum system voltage	$V_{sys}$	[V]	1000(IEC) 1000(UL)
Weight	M	[kg / lbs]	21.2/46.7

\* Measurement tolerances:  $P_{MPP} \pm 3\%$ ,  $I_{sc}$ ,  $V_{oc} \pm 5\%$  at STC: 1000 W/m<sup>2</sup>, 25 ± 2 °C, AM 1.5 according to IEC 60904-3. Data given are rated (nominal) values.  
IEC 61215:2016, IEC 61730:2016.



© 11122017

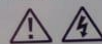


20462439563102046

Harwin Q CELLS USA Inc.  
390-310 Newark Drive, Dalton GA 30721, USA

**qcells**

Assembled in USA



**DANGER!**

**Risk of electric shock!**

DO NOT connect or disconnect plug contacts while system is under load current. Refer to the Installation and Operation Manual before installing, operating or servicing this unit.

**DANGER!**

**Risque de choc électrique!**

NE PAS connecter ou déconnecter les connecteurs lorsque le système est en charge. Consultez le manuel d'installation et d'utilisation avant installation, utilisation et entretien du produit.

Fire Rating: Class C / Type 2

Fuse Rating: 25 A

U.S. Patent No. 9,893,315  
(solar cells)

EMAIL [service@q-cells.com](mailto:service@q-cells.com)  
WEB [www.qcells.com](http://www.qcells.com)

109 OVERLOOK COURT  
ANGIER NC 27501





























MCI-2 | PV RAPID  
SHUTDOWN EQUIP  
(P) 1879359-15-B  
(S) GF22431000071Y

MAX DC VOLTAGE 1000V  
OPERATING DC VOLTAGE 0-165V  
MAX CURRENT 15A

MAX SHORT CIRCUIT CURRENT 19A  
SHUTDOWN TIME LIMIT 10SEC  
OPERATING TEMP -45C TO 70C  
NEMA 4X/IP65  
MADE IN USA



Intertek  
0015503  
CONFORMS TO UL STD 1741

































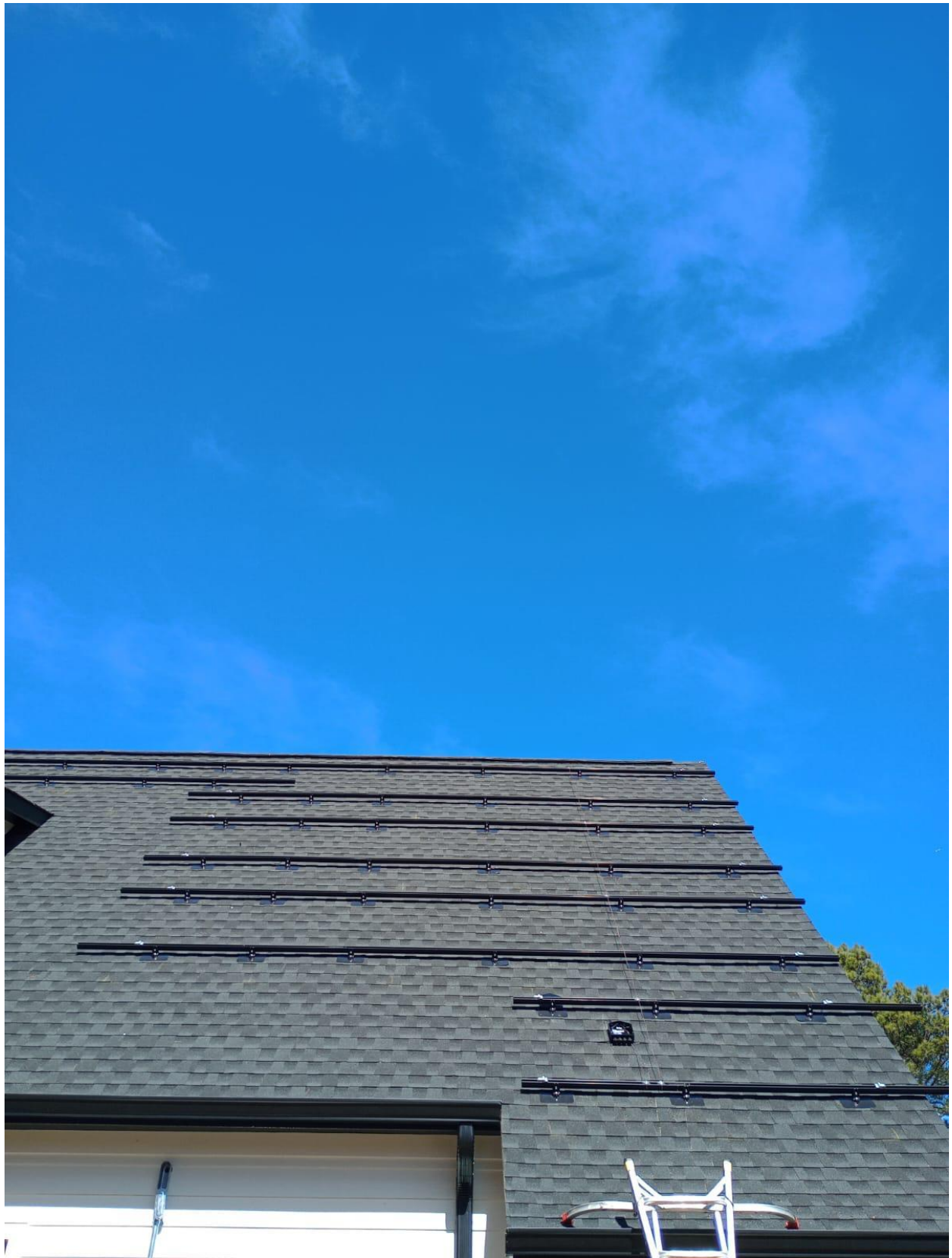




























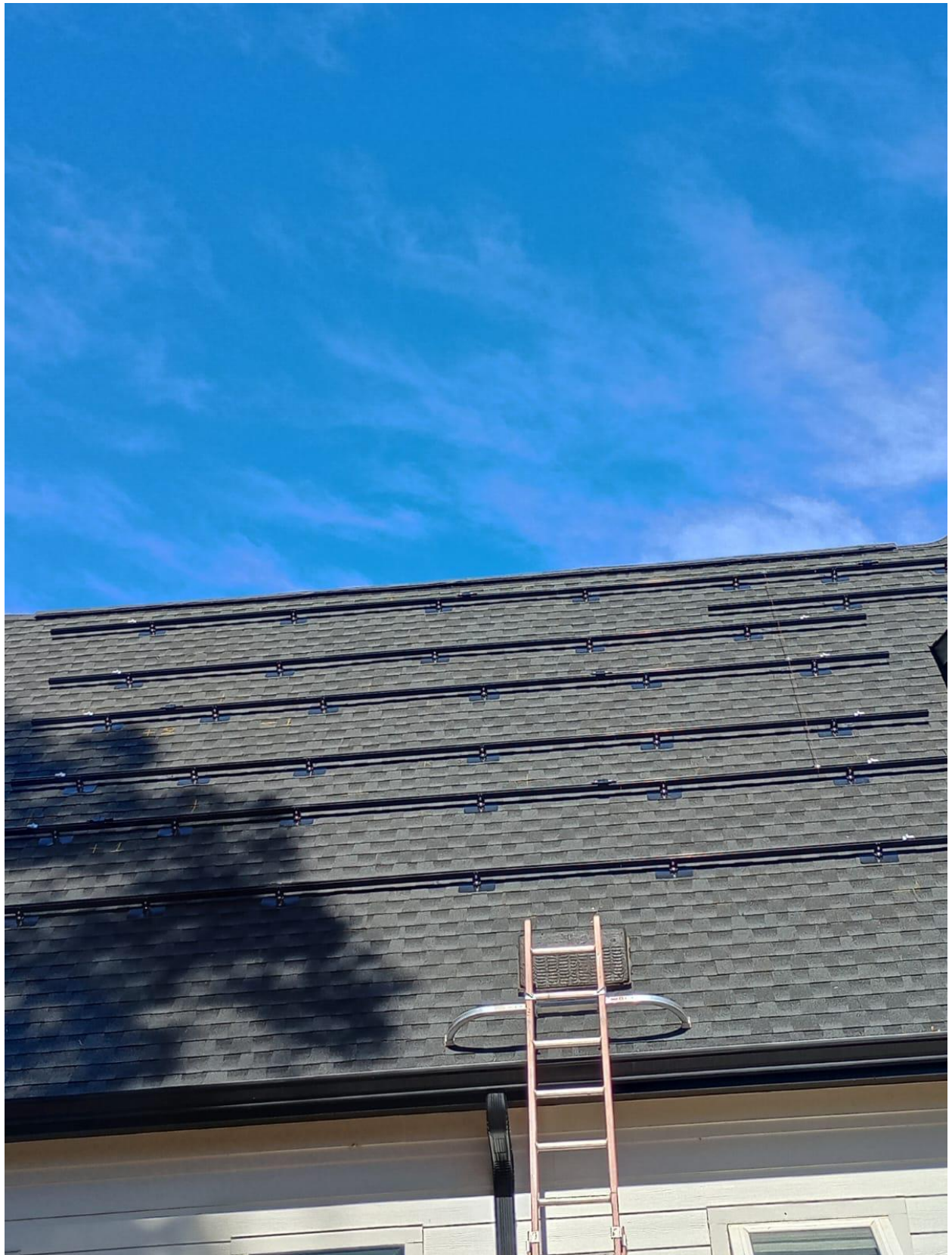




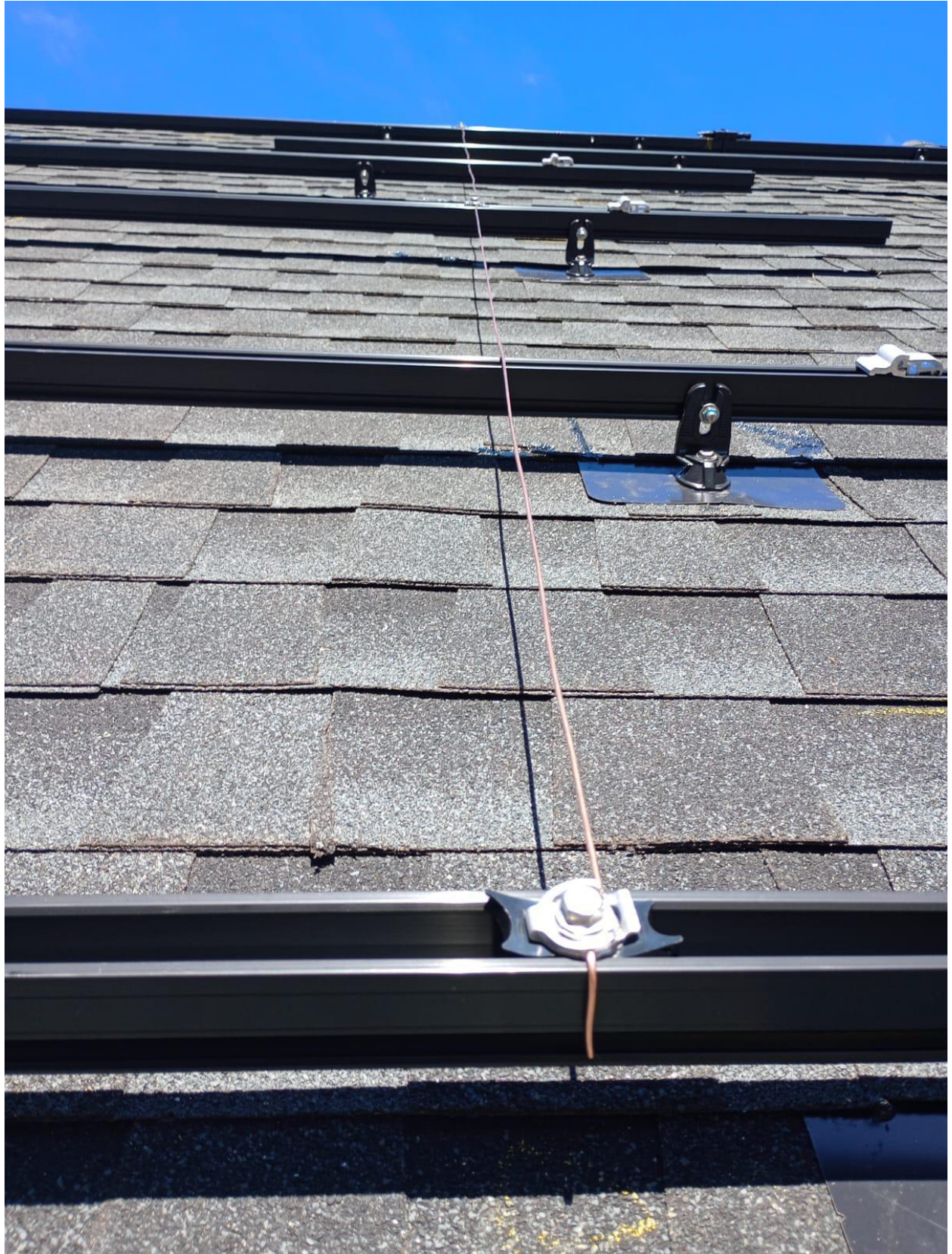




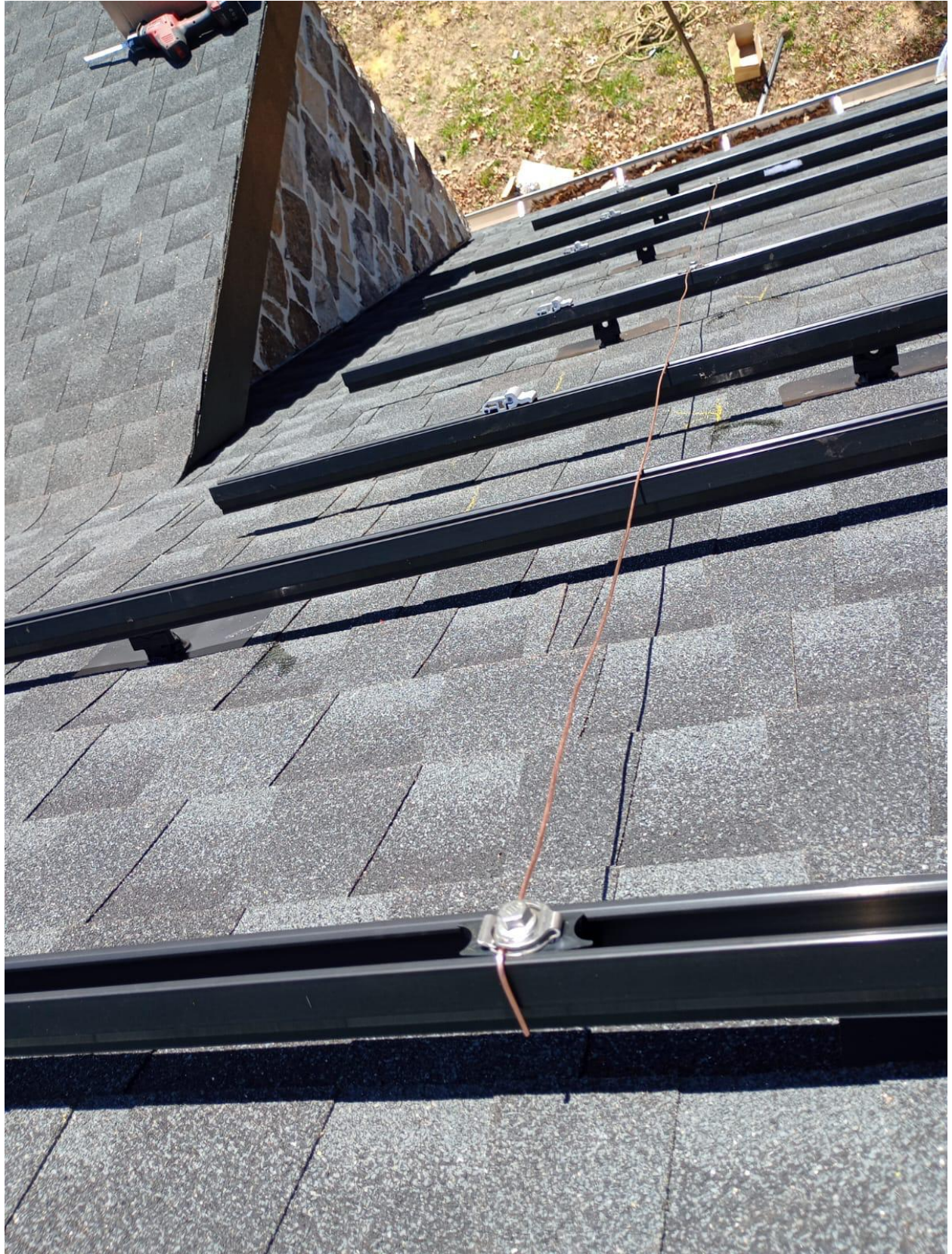




















EZ SOLAR

109 OVERLOOK COURT  
ANGIER NC 27501

JB-1.2

WARNING: PHOTOVOLTAIC  
POWER SOURCE

MADE IN  
USA













PEGASUS  
SOLAR™  
END PANEL →  
SP PRS  
C US 21-2  
A

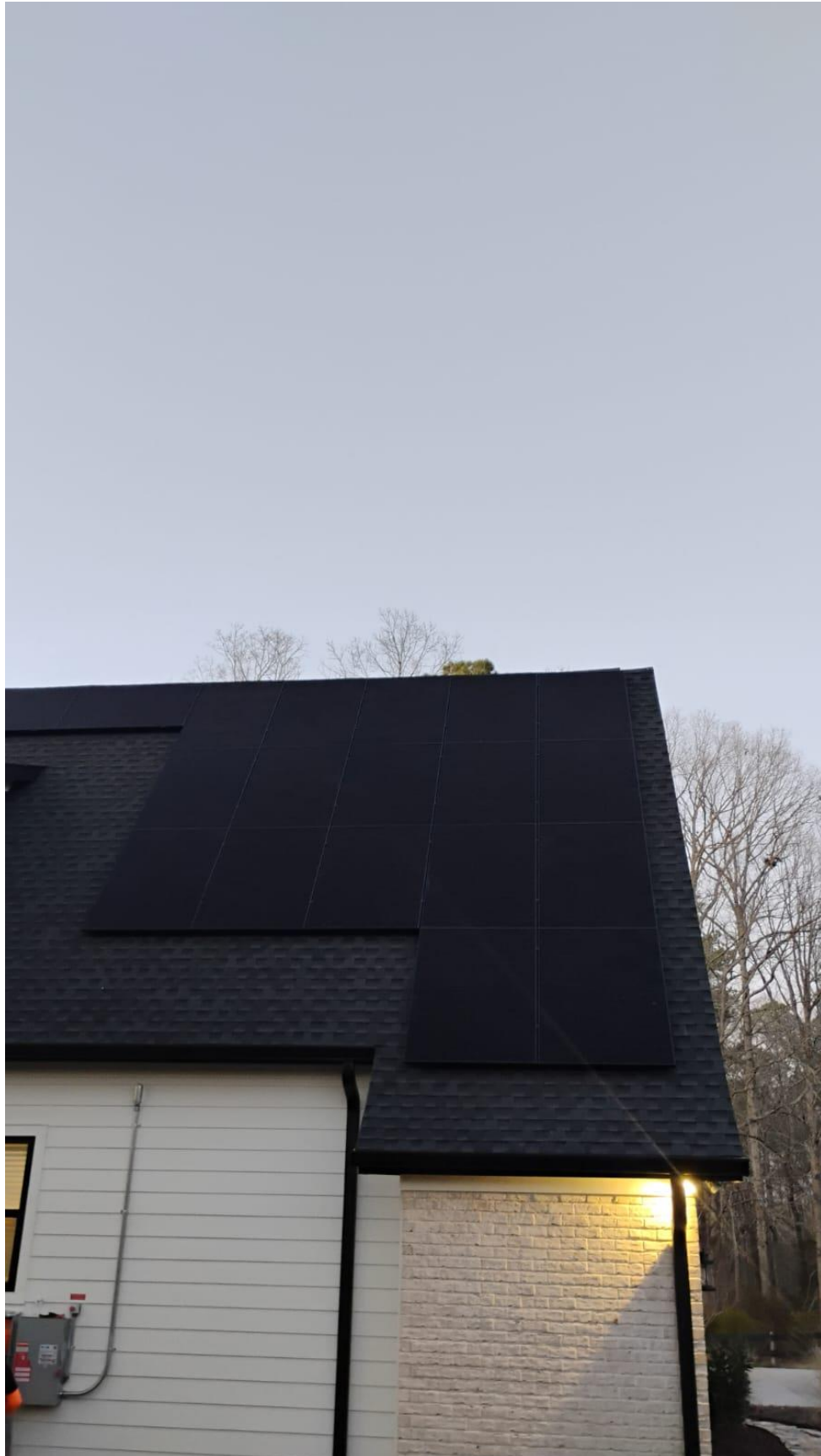




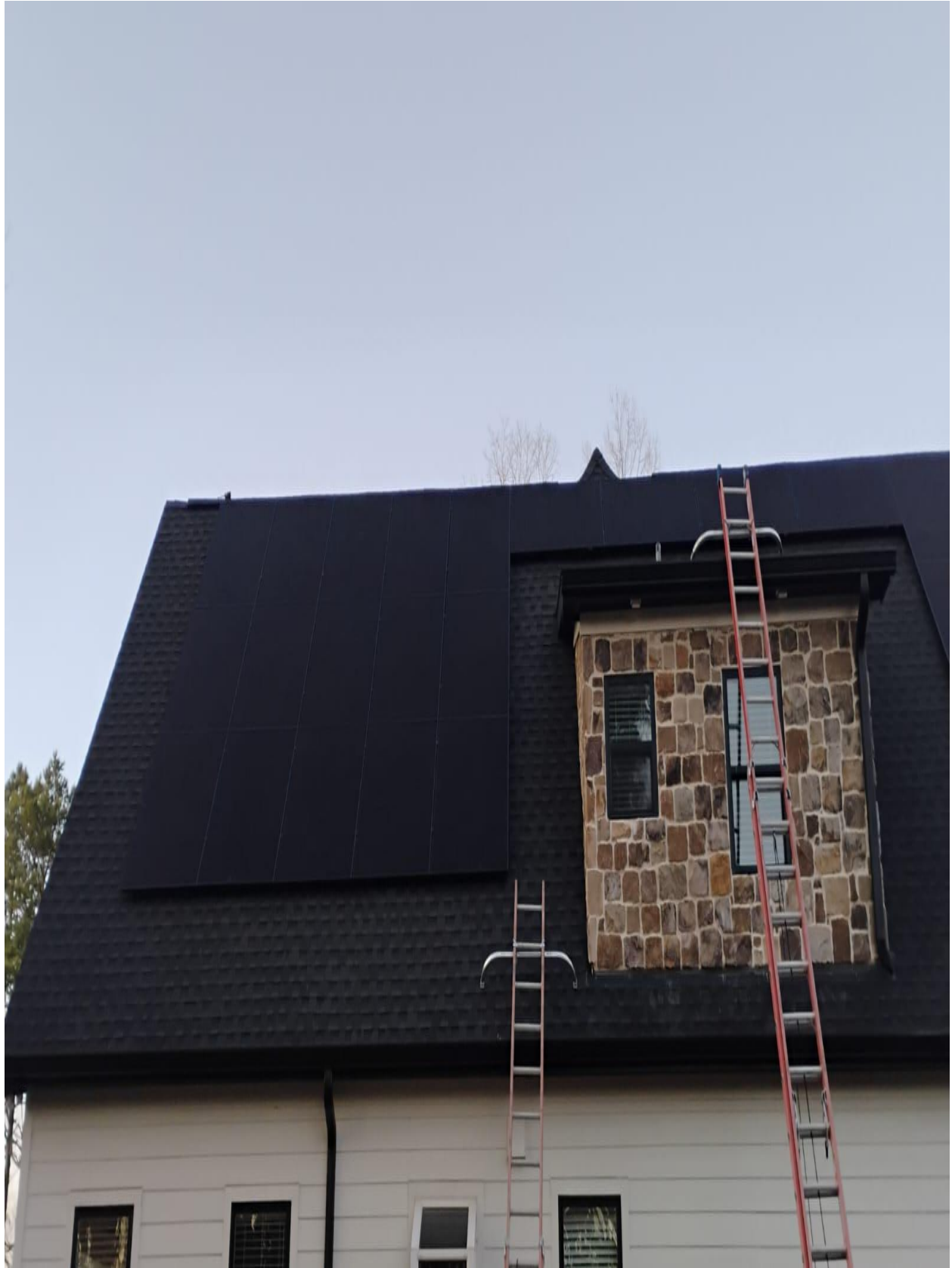




































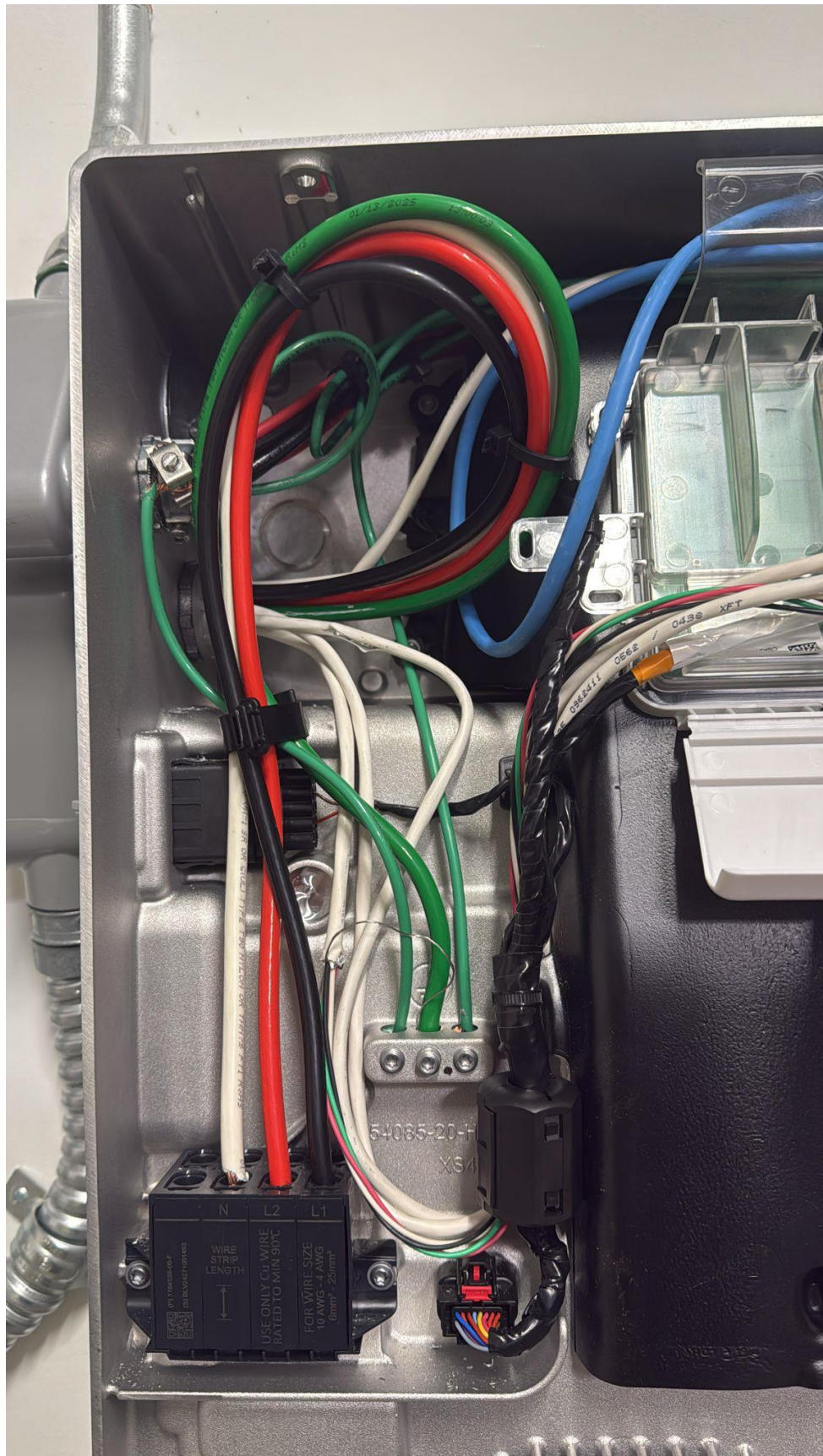




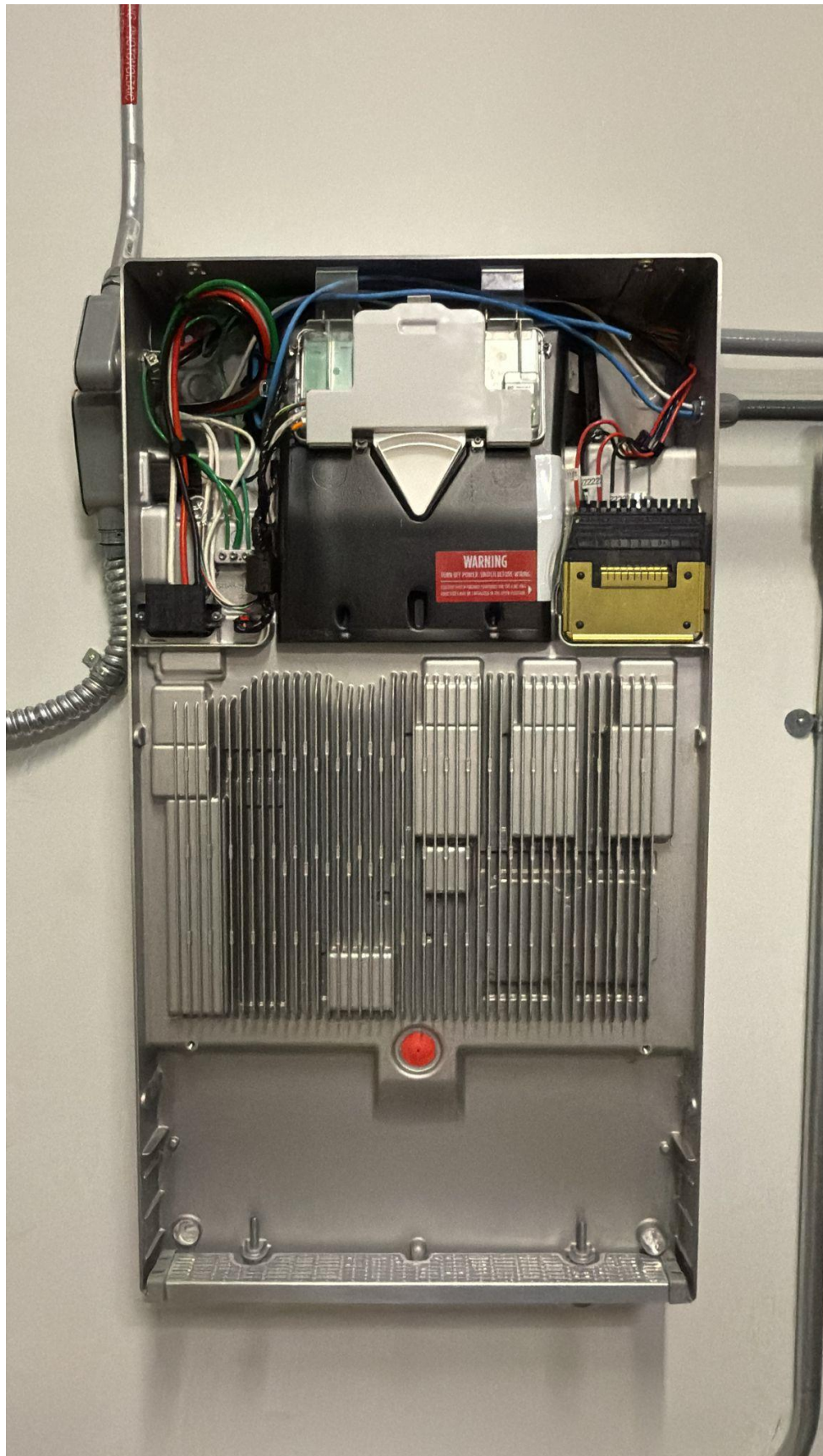




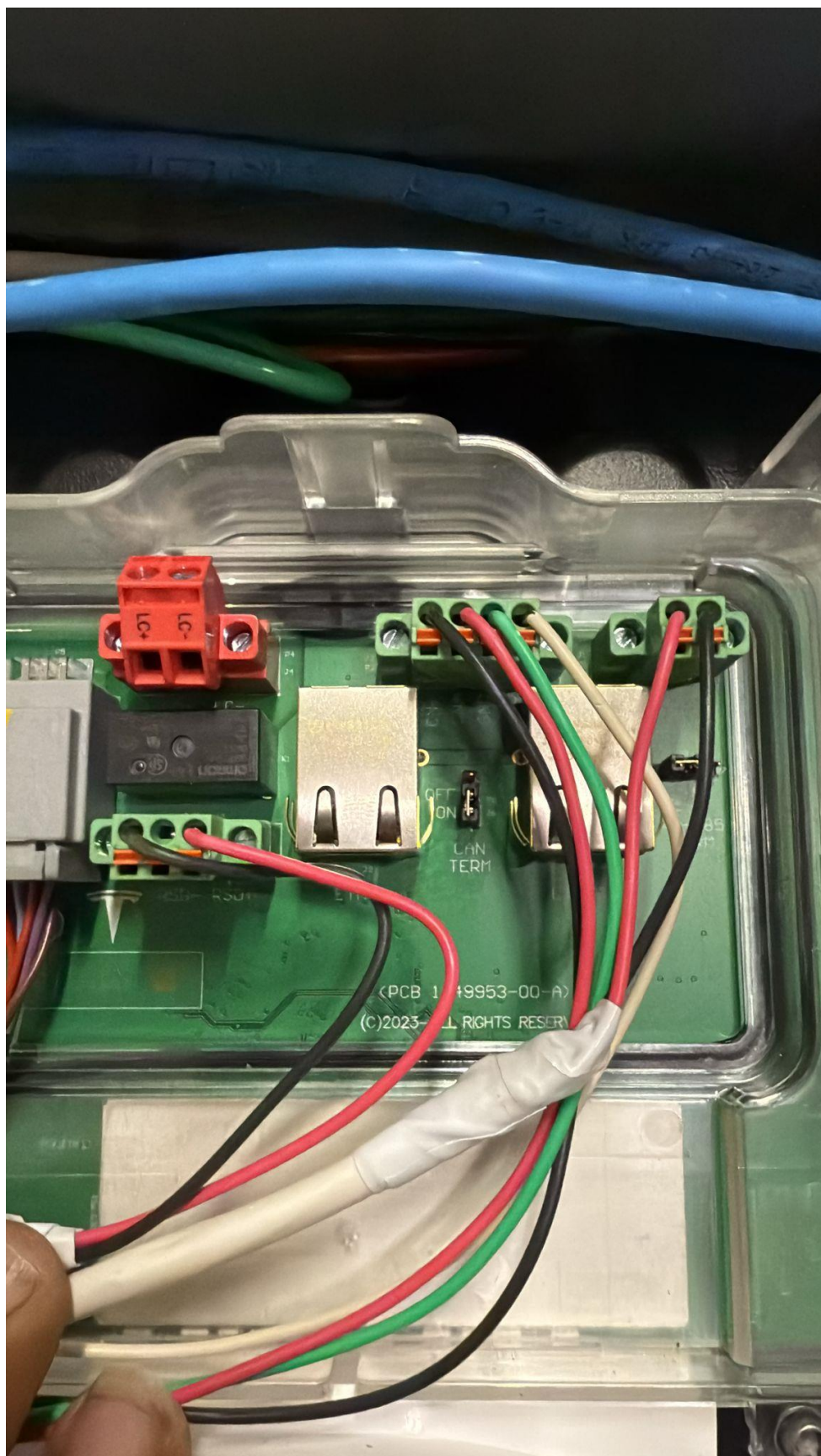




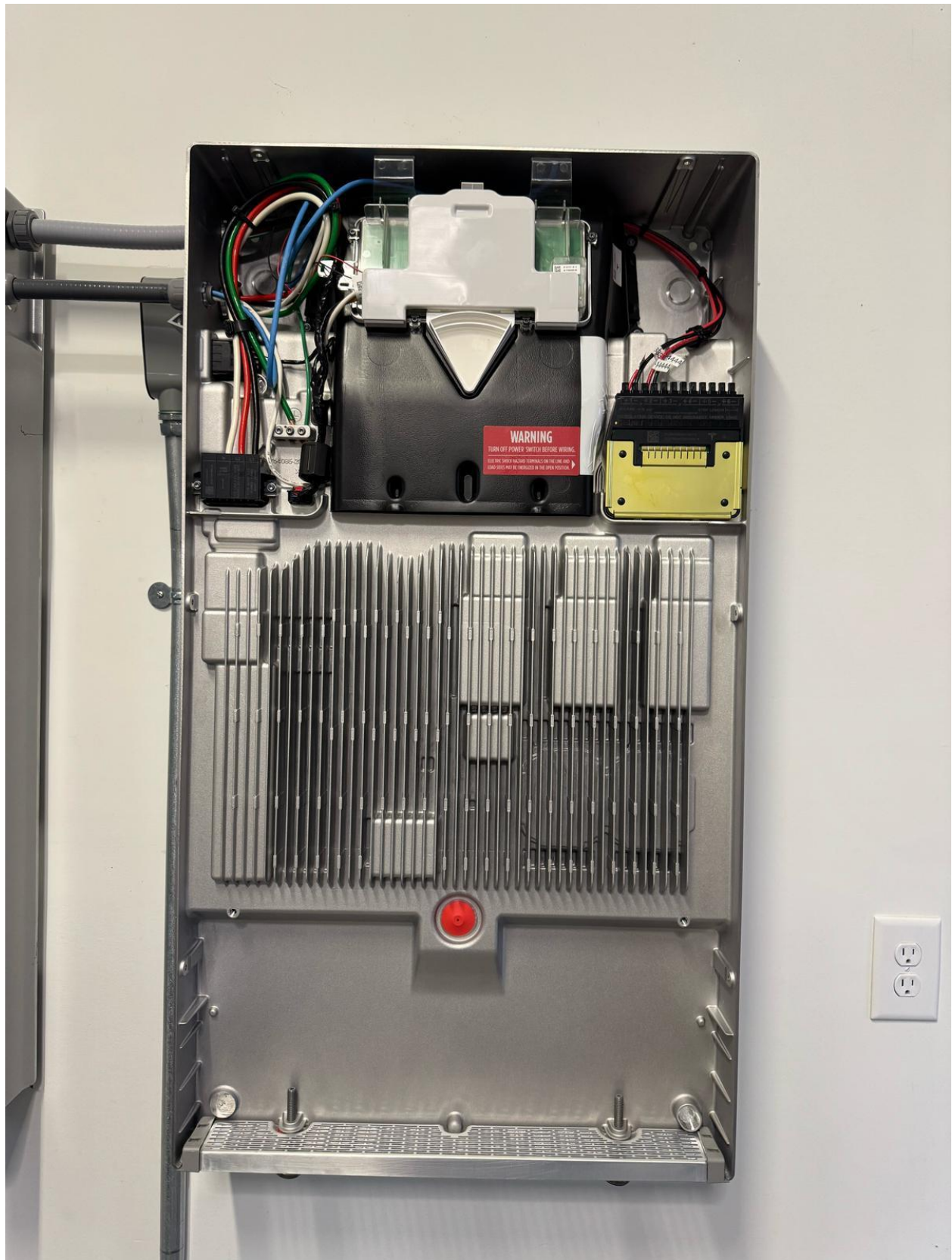




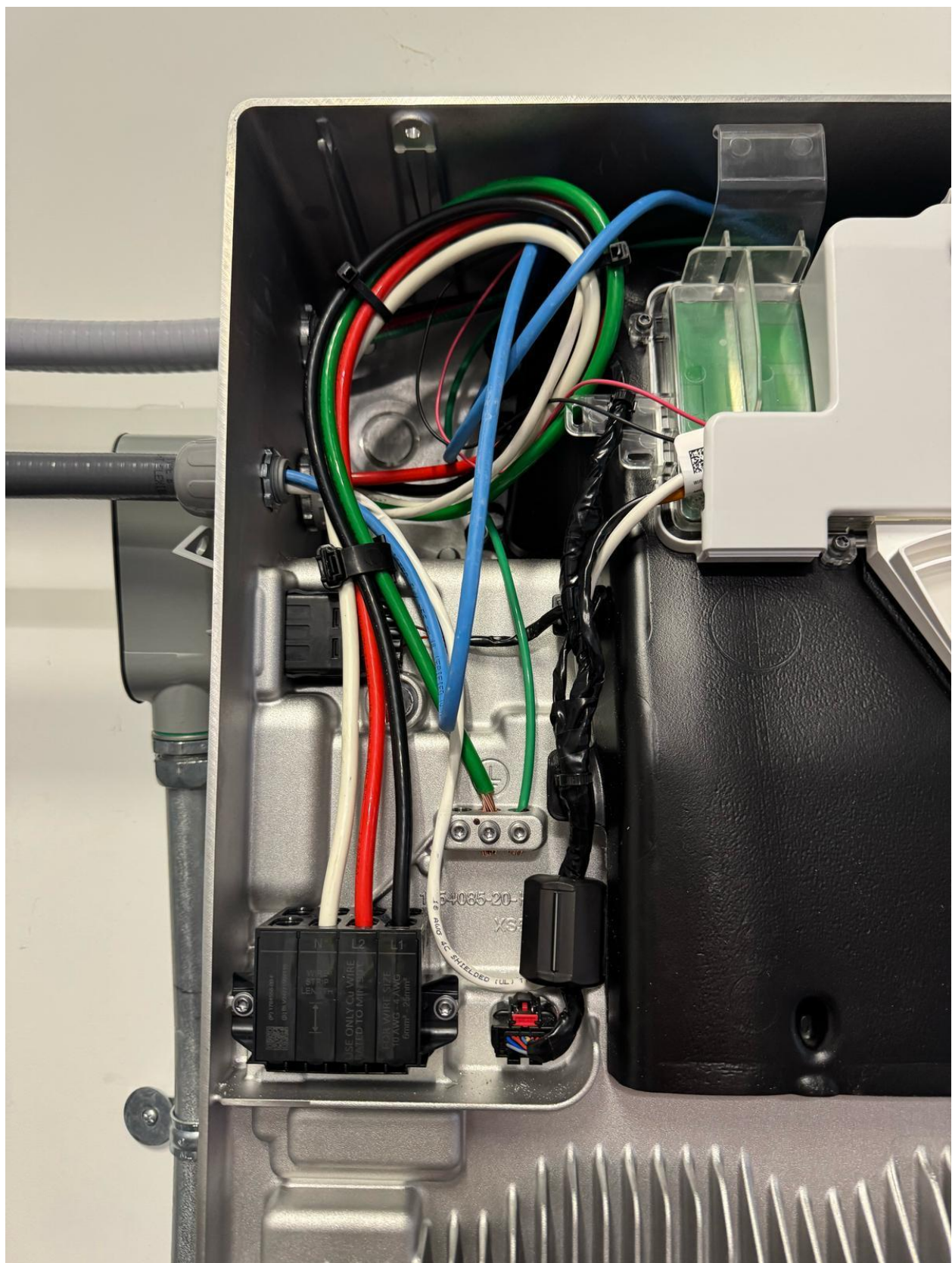






















PHOTOVOLTAIC  
AC DISCONNECT  
**WARNING**  
ELECTRIC SHOCK HAZARD  
TERMINALS ON THE LINE AND  
LOAD SIDES MAY BE ENERGIZED  
IN THE OPEN POSITION  
AC DISCONNECT  
PHOTOVOLTAIC SYSTEM  
POWER SOURCE  
RATED AC  
OUTPUT CURRENT 96 AMPS  
NOMINAL OPERATING  
AC VOLTAGE 240 VOLTS

**RAPID SHUTDOWN  
SWITCH FOR  
SOLAR PV SYSTEM**

SERVICE DISCONNECT LOCATED IN THE  
GATEWAY TO THE LEFT

BATTERY DISCONNECT LOCATED IN THE  
GATEWAY TO THE LEFT

GENERATOR DISCONNECT LOCATED IN THE  
ATS BETWEEN THE GATEWAY AND  
UTILITY METER

**EATON**

**ON**

**OFF**

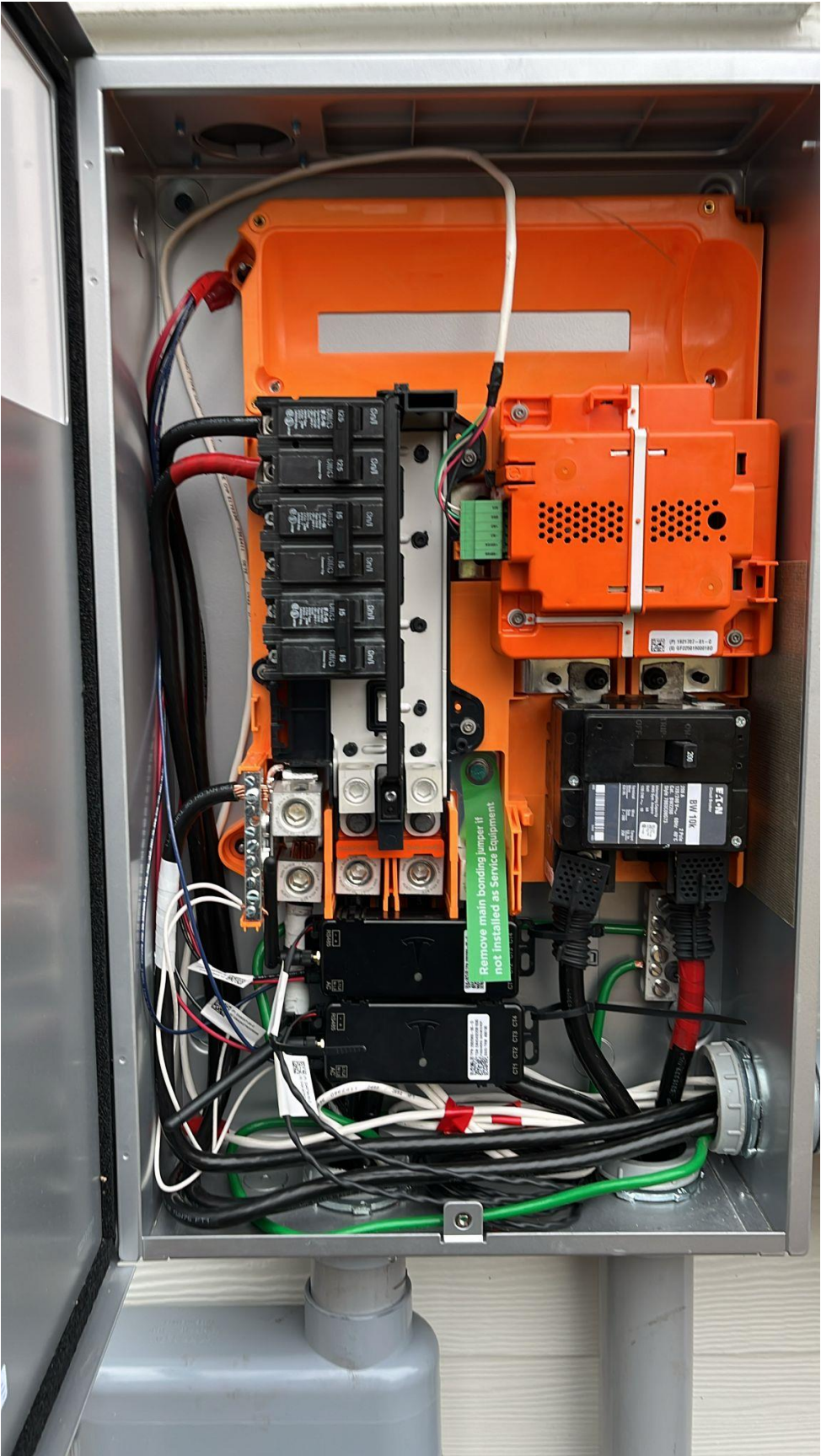
**General Duty Safety Switch**  
Interrupteur de sécurité à usage général  
Interruptor de seguridad de servicio general  
200 A, 240 V~, 60 Hz

Complete Ratings Inside. Further Instructions Inside.  
Veuillez consulter l'intérieur à l'extérieur. Autres instructions à l'intérieur.  
Véase las especificaciones y el interior. Instrucciones adicionales en el interior.

**⚠ DANGER**  
HAZARDOUS VOLTAGE. WILL CAUSE SEVERE INJURY OR DEATH.  
- Never operate switch with open switch.  
- Turn OFF power ahead of switch before using any tools inside. Remove all parts. Close cover before using power ON.  
- Evénement dangereux. Peut causer des blessures graves ou la mort.  
- Ne jamais manipuler l'interrupteur lorsque la couverture est ouverte.  
- Déconnectez l'alimentation de l'interrupteur avant toute intervention.  
- Fermez la couverture avant de manipuler avec les outils.  
**⚠ PELIGRO**  
VOLTAJE PELIGROSO. PUEDE CAUSAR HERIDAS GRAVES O LA MUERTE.  
- Nunca opere el interruptor con la cubierta abierta.  
- Desconecte la alimentación de este switch antes de manipular dentro del mismo.  
- Cierre la tapa antes de manipular con herramientas.  
Made in U.S.A. / Fabriqué aux E.-U. / Hecho en U.S.A. 30-43102









SOLAR SYSTEM



**WARNING**  
SOLAR ELECTRIC  
CIRCUIT BREAKER  
IS BACKFED

SERVICE  
DISCONNECT



**GATEWAY 3**

Complies with UL 1741, IEEE 1547, and NEC 690.11

Model: PVI-1500-80-0 (S) 00000000000000000000

AC PROTECTIVE CLASS	CLASS 1
ENCLOSURE TYPE	TYPE 3R, RAINPROOF
OPERATING TEMPERATURE RANGE	-40°C TO 50°C

AC INPUT / OUTPUT	
INPUT VOLTAGE	120V AC
PHASE	1PH, 1W, 1L
MAX CONTINUOUS CURRENT	15A
MAX SHORT CIRCUIT CURRENT	15A
MAX FREQUENCY	60Hz

**CAUTION:** RISK OF ELECTRIC SHOCK. MULTIPLE VOLTAGE SOURCES TERMINATED WITHIN. DISCONNECT EACH CIRCUIT BEFORE SERVICE. REFER TO SERVICE MANUAL FOR PROPER WIRING.

**WARNING:** ISOLATE AT SUPPLY AUTHORITY SOURCE BEFORE ENTERING THIS COMPARTMENT.

**ATTENTION:** RISQUE DE CHOC ELECTRIQUE. MULTIPLES SOURCES DE TENSION TERMINEES A L'INTERIEUR. DEBRANCHER CHAQUE CIRCUIT AVANT L'INTERVENTION. LA MANIPULATION DOIT ETRE EFFECTUEE A LA SOURCE D'ALIMENTATION.

**AVERTISSEMENT:** RISQUE A LA SOURCE D'ALIMENTATION. ISOLER A LA SOURCE D'ALIMENTATION AVANT D'ENTRER DANS LE COMPARTIMENT.

SUITABLE FOR USE WITH HYPERCONNECTED PARALLEL ELECTRIC POWER PRODUCTION SOURCES

SUITABLE FOR USE AS SERVICE EQUIPMENT

CLASS 1 UL PANELBOARD

**TESLA**

3501 Market Street  
Palo Alto, CA 94304  
USA  
1-877-820-0825  
www.tesla.com



















