

PHOTOVOLTAIC POWER SOURCE

solar_{edge}

Made in USA
from imported parts

ON

OFF

DISCONNECT

solar_{edge}

Robison Hagan
DANGER
DO NOT OPERATE
THIS LOCK/TAG MAY ONLY BE REMOVED BY:
NAME: *Top Tier Solar*
DATE: _____
EXPECTED COMPLETION: _____
www.lockout.com • 800-527-1234





PHOTOVOLTAIC
SYSTEM kWh METER

⚠ DANGER

High voltage. Shock hazard.
See instructions for safety.
Turn off power before work.



⚠ PELIGRO

Alto voltaje. Peligro de
shock. Ver instrucciones de
seguridad antes de trabajar.
Apague el interruptor antes de
trabajar.

CL300 240V 3W TYPE C2M 30TA 1.0KN
#222 8F5405 H67*
DUKE ENERGY PROGRESS
343 704 322
OpenWay
1102

000000



SIEMENS

AC DISCONNECT
PHOTOVOLTAIC SYSTEM
POWER SOURCE

RATED AC OUTPUT CURRENT	32	AMPS
NOMINAL OPERATING AC VOLTAGE	240	VOLTS

CAUTION:
MULTIPLE SOURCES OF POWER
THE SERVICE DISCONNECT IS LOCATED
INSIDE OPPOSITE THE UTILITY METER

ON

Heavy Duty Safety Switch
60A 240VAC, 250VDC
Horsepower Rated

OFF

⚡ DANGER
Hazardous Voltage
Will cause death or
serious injury.
Turn off before repairing
any parts. Disconnecting
circuit before working on
the switch. Close cover
before turning power on.

⚠ WARNING
ELECTRIC SHOCK HAZARD
TERMINALS ON THE LINE AND
LOAD SIDES MAY BE ENERGIZED
IN THE OPEN POSITION

**SOLAR PV SYSTEM
EQUIPPED WITH
RAPID SHUTDOWN**



TURN RAPID SHUTDOWN SWITCH TO
THE "OFF" POSITION TO SHUT DOWN
PV SYSTEM AND REDUCE
SHOCK HAZARD IN THE ARRAY

**RAPID SHUTDOWN
SWITCH FOR
SOLAR PV SYSTEM**

solar**edge**

Made in USA 
from imported parts

P 1 0

ON

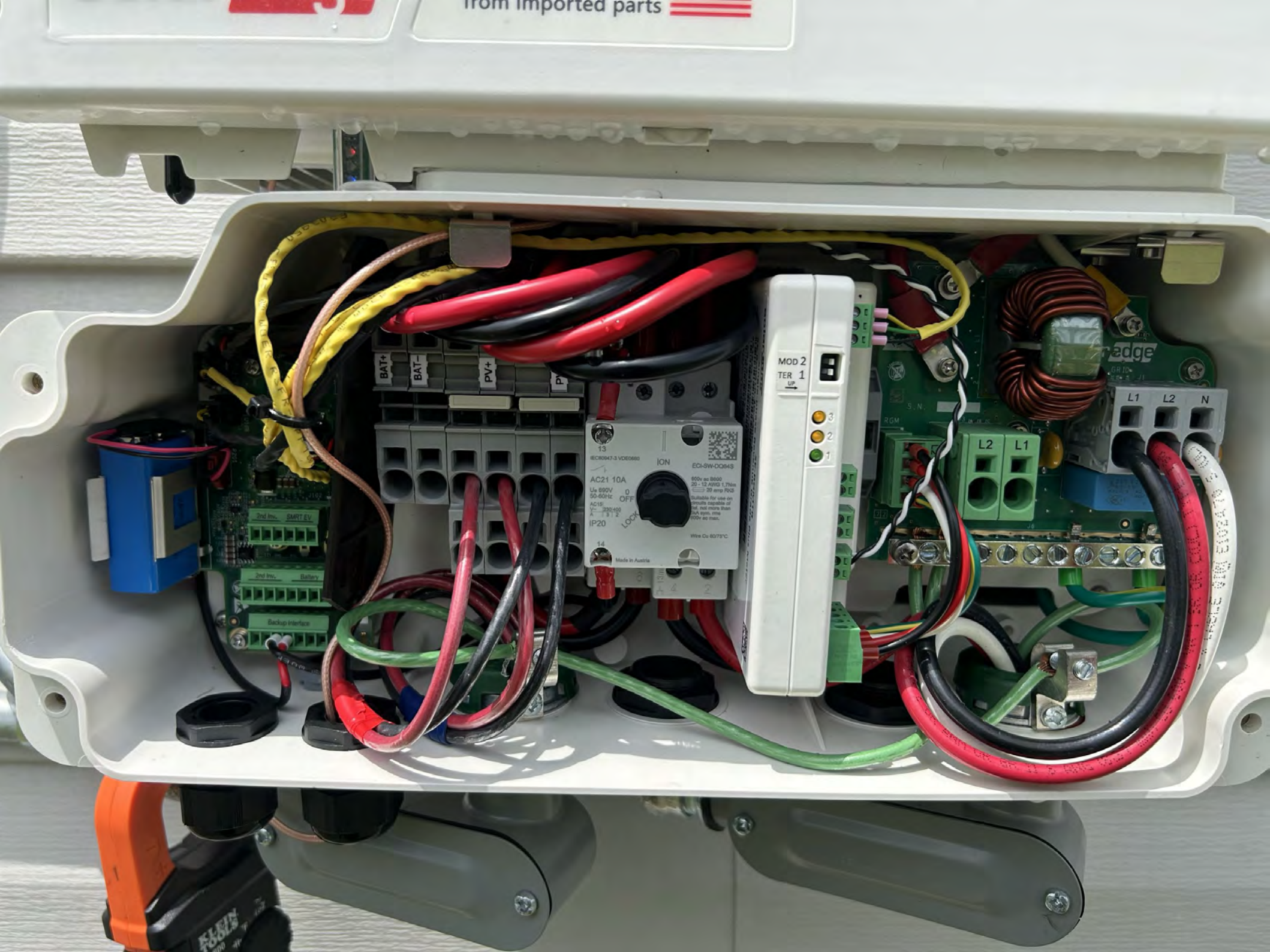
OFF



DC DISCONNECT

solar**edge**

from imported parts



BATT+
BATT-
PV+
P

13
IEC60947-3 VDE0680
AC21 10A
U_n 500V
50-60Hz
AC10
Y: 230/400
A: 13/12
IP20
ION
ECL-SW-00843
900V ac 8000
20-12 AWG 1.75mm
20 amp FOC
Suitable for use on
circuits capable of
not more than
10kV rms
100V ac max.
Wick Cu 6075°C
14
Made in Austria

MOD 2
TER 1
3
2
1

L1 L2 N

L2 L1

2nd In. SMART EV
2nd In. Battery
Backup Interface

edge

EBB
1000



015 69 89





solar edge **SE7600H - US**
 Grid Support Utility Interactive Non-Isolated
 Photovoltaic Inverter With stand - alone Mode

Operating Voltage Range 270 - 480 Vac
 Max Input Current 31 Aca
 Max Continuous Output Power Grid connected 7600Wac @ 240V
 Max Continuous Output Power and Current stand - alone 7.6 KVA 32A
 11.4 KVA 48A
 Voltage Min - Nom - Max 211 - 240 - 284 Vac

Max stand - alone Capacity 11.4 KVA
 Max Continuous Output Current Grid Connected 32Aac
 Max Output Fault Current 74 Aac
 Max Utility Backfeed Current 0 Aac
 Frequency Min - Nom - Max 50.3 - 60.0 - 60.5 Hz
 Output Power Factor +/- 0.85 - 1
 Max Ambient Temperature 60 C
 Enclosure IP65/NEMA 4X

With Integrated ground fault protection per NEC 90.85 (C)
 Type 1 Photovoltaic Arc - Fault Circuit - Protection
 ATTENTION: The maximum operating current of this system may be controlled electronically. Refer to manufacturer's instructions for more information.



Intertek
4004590




Wi-Fi Password:
Pb47Fpp8
Activation:
ixWD 56eY DZ84 wh8t RJ5u UqQ Ue =
WIFI MAC:
84:D6:C5:A0:60:7E

PN: SE7600H - USMNUBL15
 SN: SB1724 - 07508A407 - B8



solar edge



**PHOTOVOLTAIC RAPID
 SHUTDOWN SYSTEM**

solar edge



ETL LISTED
 CONFORMS TO
 ANSII/UL 1741
 CERTIFIED TO
 CAN/CSA
 C22.2 NO 107

Intertek
4004590

7508A497-B8



Grid Support Interactive Inverter - CSA C22.3
 No. 9 - Basic or "Grid Support Interactive Inverter -
 CSA C22.3 No. 9 - Supplemental.
 Contains FCC ID: 2AGP7-PLNLX, IC: 20916-PNLX. The enclosed device complies
 with Part 15 of the FCC Rules. Operation is subject to the following two conditions:
 (1) this device may not cause harmful interference.
 (2) this device must accept any interference received,
 including interference that may cause undesired operation.
 PATENT MARKING NOTICE: SEE www.solaredge.com/groups/patent
 MADE IN USA From Imported Parts







THIS SHEATHING IS MADE OF RECYCLED WOOD AND IS NOT TO BE USED FOR ELECTRICAL PURPOSES.
SEE INSTRUCTIONS ON REVERSE SIDE OF SHEATHING FOR MORE INFORMATION.
OSB SHEATHING



120VOLT/60HZ POWER SOURCE

RESISTANT

1/2" RIGID PVC

1/2"

1/2"

1/2"

1/2"

1/2"

1/2"

1/2"

1/2"

1/2"

1/2"

1/2"

1/2"

1/2"



SELF STORAGE OF PORTLAND CEMENT
DO NOT STORE IN CONTACT WITH
WALLS OR FLOOR





PHOTOVOLTAIC POWER SOURCE



⚠ WARNING
DUAL POWER SUPPLY
 SOURCES: UTILITY GRID
 AND PV SOLAR
 ELECTRIC SYSTEM

⚠ WARNING
 POWER SOURCE
 OUTPUT CONNECTION
 DO NOT RELOCATE THIS
 OVERCURRENT DEVICE

CAUTION:
 MULTIPLE SOURCES OF POWER
 THE PV DISCONNECT IS LOCATED
 BESIDE THE SERVICE METER

**RAPID SHUTDOWN
 SWITCH FOR
 SOLAR PV SYSTEM**

⚡ CAUTION ⚡
SOLAR ELECTRIC SYSTEM CONNECTED



SD SMITH DOUGLAS HOMES
 QUALITY | INTEGRITY | VALUE

Smith Douglas Service Email - Service@smithdouglas.com
 Smith Douglas Service Line - (888) 857-6583

Emergency Contact Numbers	Outdoors Crossing	Lot 70
Electrician	A&E Electric	919-367-6100
Plumbing	C&M Plumbing	919-292-2048 803-770-9303 (after hours)
Heating & Air	Seawest Mechanical Services Inc.	919-772-2709
Appliances	RightStar.com	855-224-4987
Utility-Water	Harnett County	910-814-4002
Utility-Electric	Duke Energy Progress	800-777-8898
Gas	LP optional for fireplace	Contact local LP provider
Location of Gas Shut Off	N/A	
Location Water Shut Off	Garage at Water Heater	If Basement lot located in Basement
Signs	A&E Enterprises	845-742-8176
Interior - Brand	Sherwin Williams	Closing Date
Walls	TW 2014 Color White	
Ceiling	Sw 2014 Color White	Air Filter Size
Trim	SW2006 Color White	
Exterior - Brand	Vinyl Siding	Change Filter (date)
Siding	Platinum Gray	Monthly
Shutter/Door	Black/SW9428 Color Black	Change Battery (date)
Shake/Trim	Midnight Blue/White	every time change

40

40

HACR Type, 40°C
SIEMENS

2 Poles Type/Type AP
Interrupting Rating
Pouvoir de Coupure
MAX.RMS.SYM.AMPS.
AMP.SYMEFF.MAX.
10,000 120/240 V~
C.B./Disj.
ISSUE NO.
UL LISTED E82615

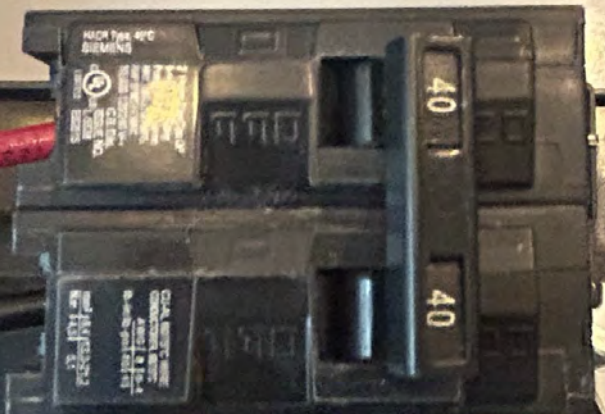
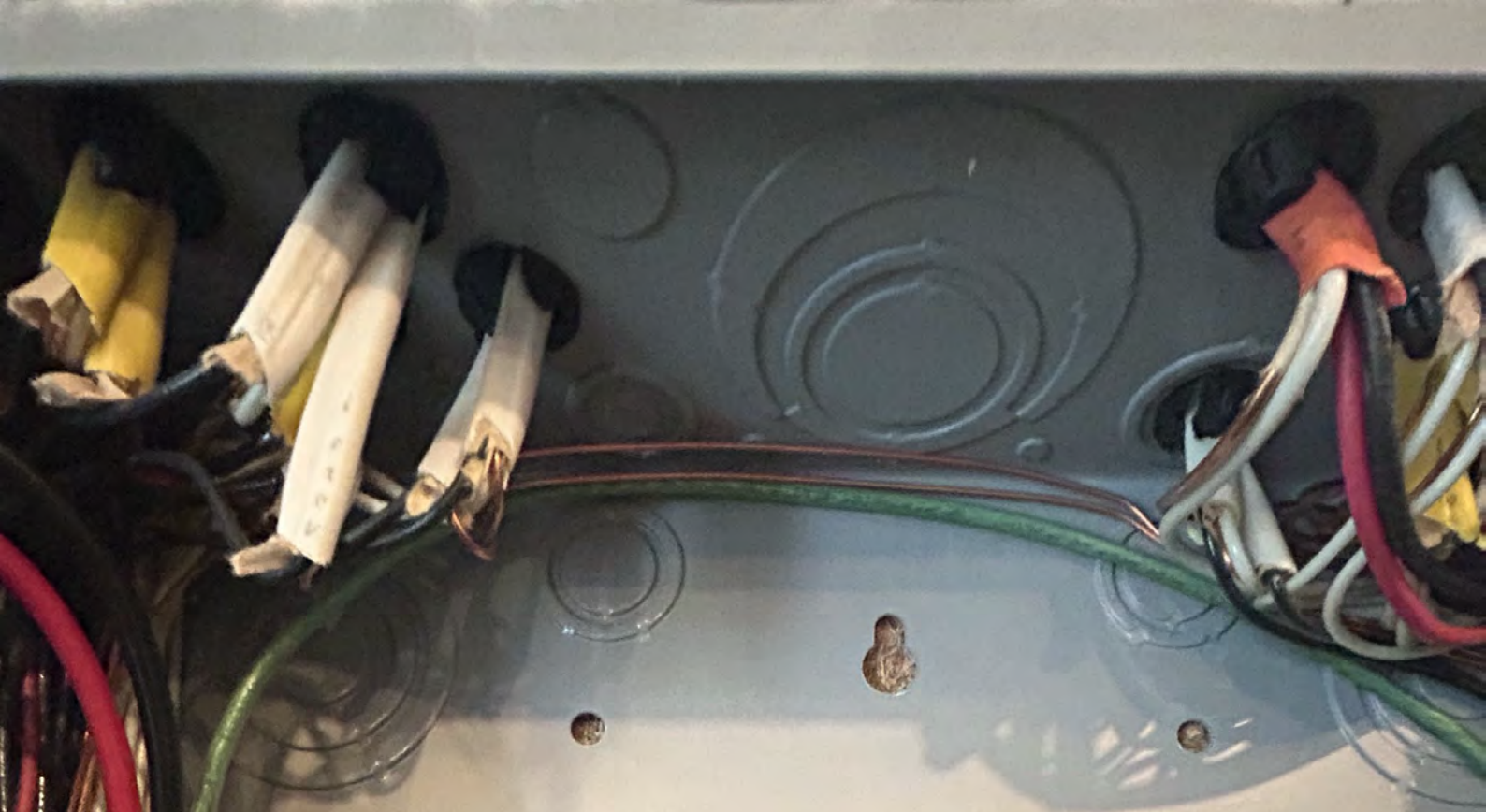
CU-AL 60/75°C WIRE
CONDUCTOR/FIL 60/75°C
AWG | 8 | 6-4
lb-in/lb-po | 40 | 45
mm² | 8,4 | 13,3-21,2
N.m | 4,5 | 5,1

04

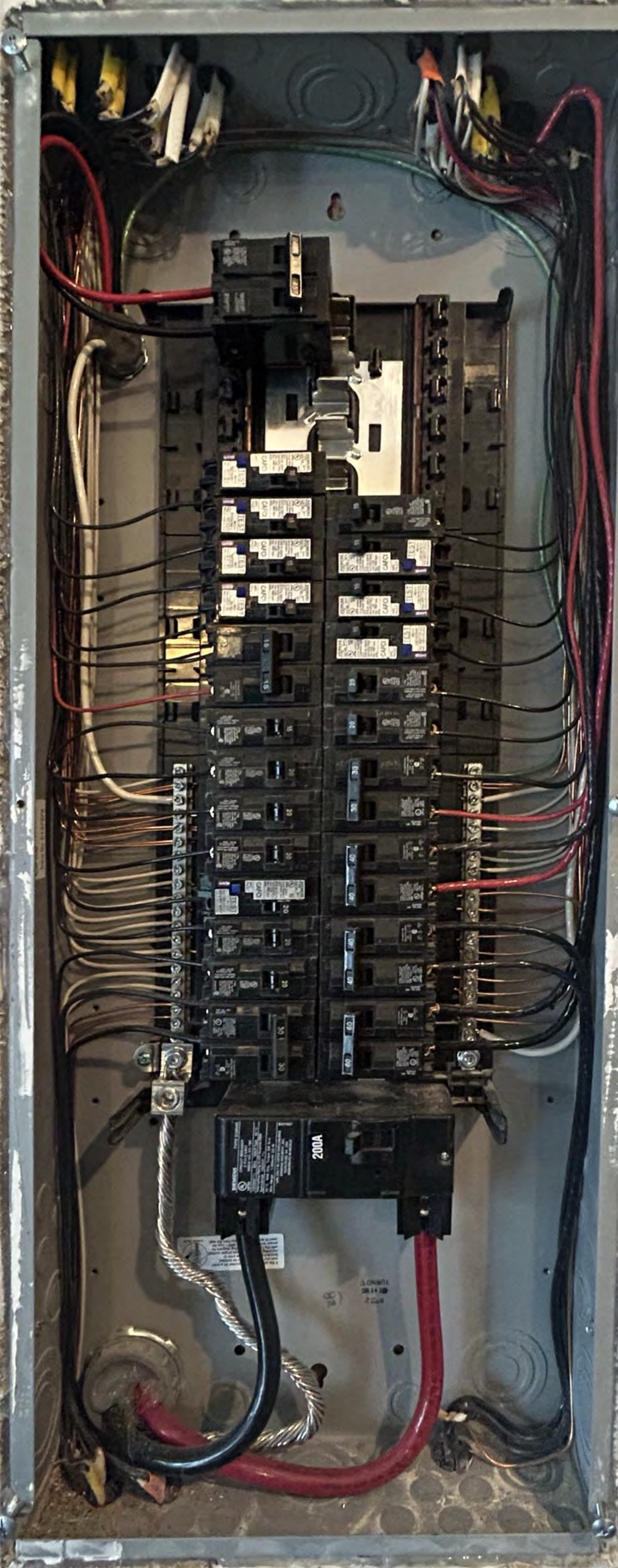
82

SOLAR PV BREAKER
BREAKER IS BACKFEED
DO NOT RELOCATE





AGREZ233
N007TW 10A
The device may have been used prior to the date of this report.
Device may not have been properly installed, and the
manufacturer may have issued a recall. The device
should be replaced with a new one of the same
model and specifications. The device should be
replaced with a new one of the same model and
specifications. The device should be replaced with
a new one of the same model and specifications.
The device may have been used prior to the date of this report.
AGREZ233 N007TW 10A



Southwire
3/4" CHINA
COVER

UL
c LISTED
5FK5



TO DISCONNECT
SOLARIS
SOLARIS



⚠ DANGER
Hazardous Voltage. Will cause death or serious injury.
• Do not open this shield unless the power supplying this switch is OFF.
• Snap shield to closed position before turning power ON.

LIGNE LINE LINEA

ENCLOSED SWITCH
No. M 47355

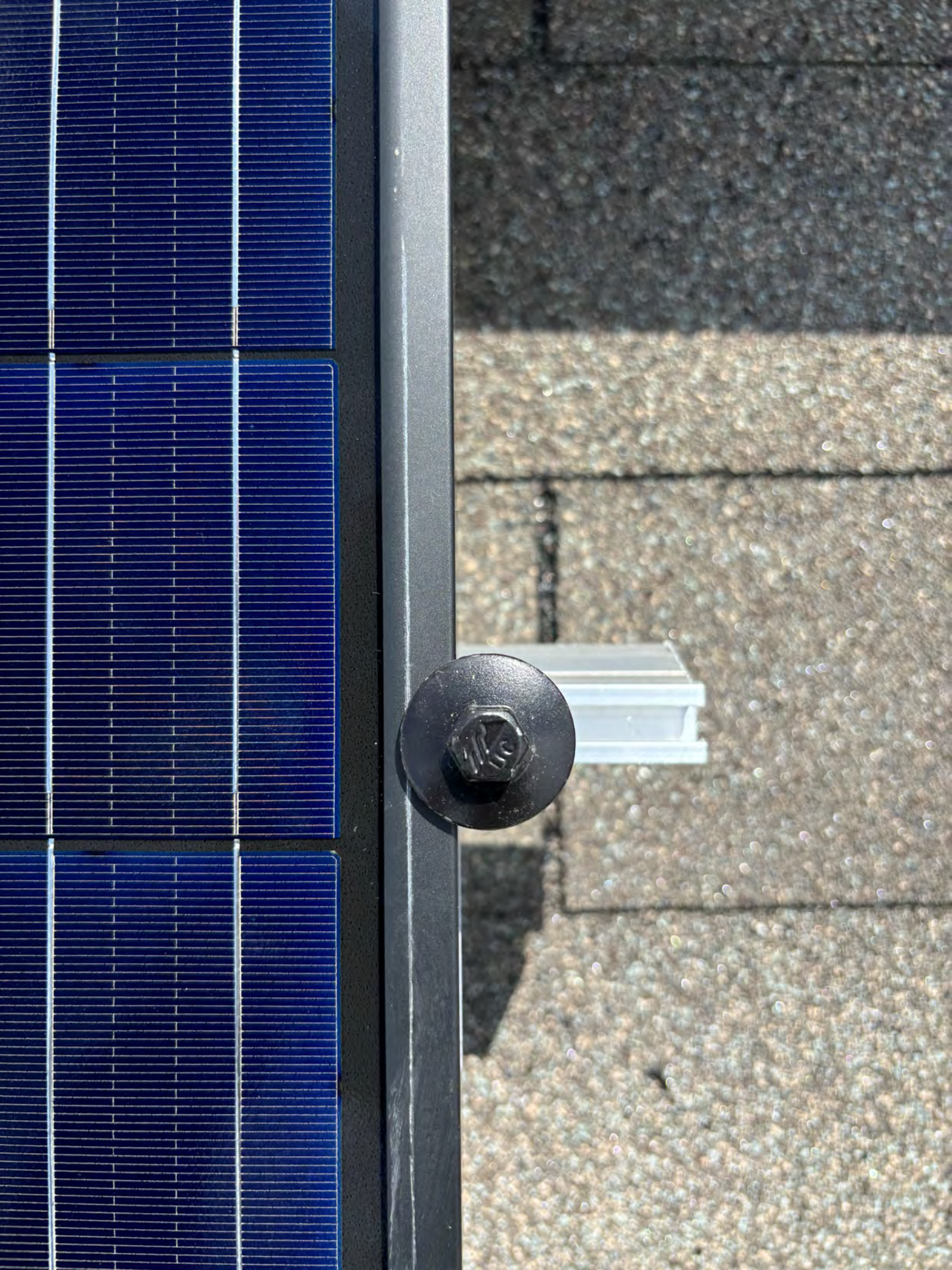
Ferraz Shawmut
Tri-Onic
TR40R
40A
250V AC
DUAL-ELEMENT
TIME-DELAY
Mersen

Ferraz Shawmut
Tri-Onic
TR40R
40A
250V AC
DUAL-ELEMENT
TIME-DELAY
Mersen

25

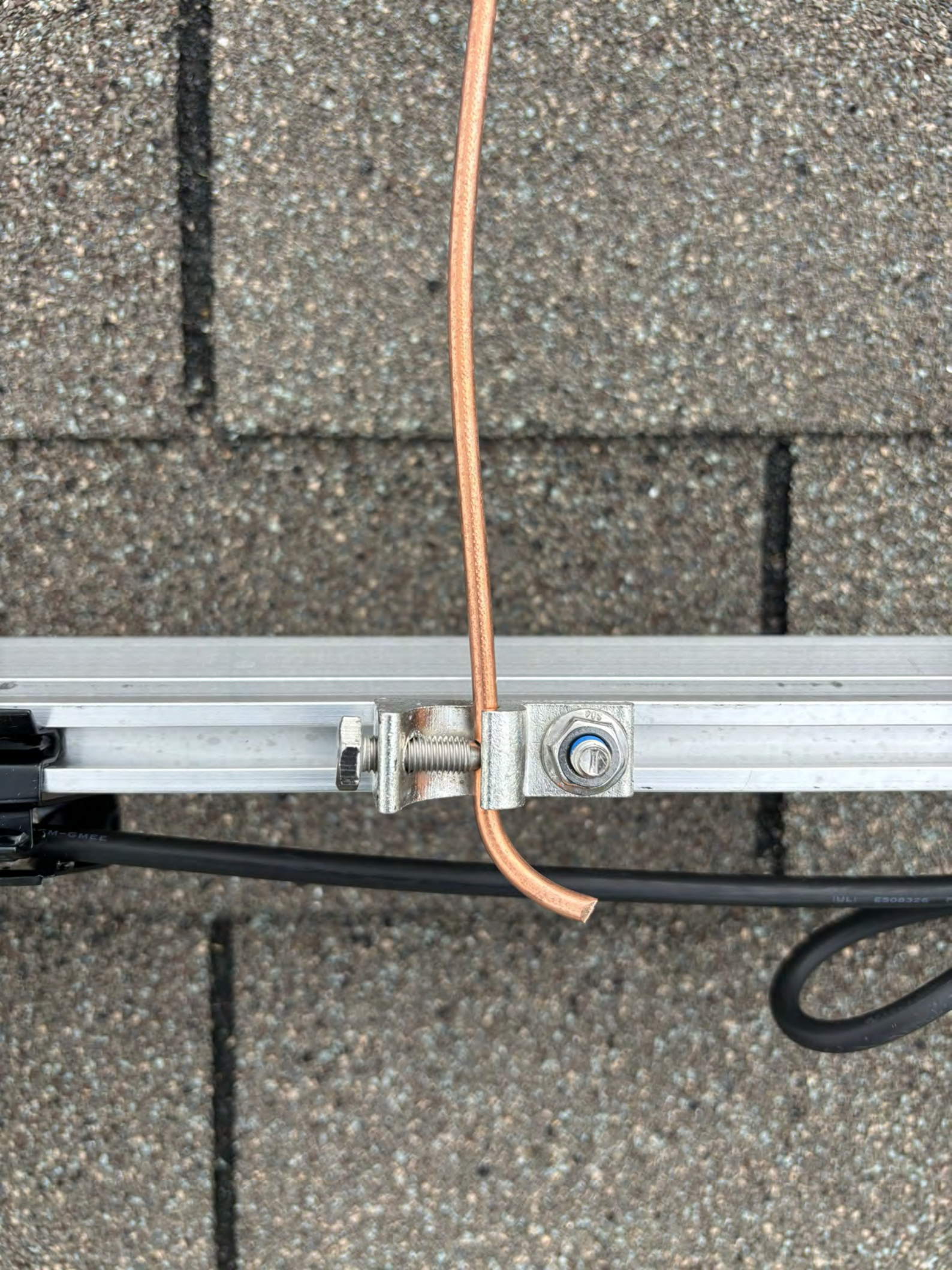












M-GMEE

250524 (M)







CAUTION

WARNING ELECTRIC SHOCK HAZARD. THE DC CONDUCTORS OF THIS PHOTOVOLTAIC SYSTEM ARE UNGROUNDED AND MAY BE ENERGIZED.



AVERTISSEMENT

RISQUE DE CHOC ELECTRIQUE: QUAND LE CHAMP PHOTOVOLTAIQUE EST EXPOSE A LA LUMIERE, UNE TENSION CC EST FOURNIE A CET EQUIPEMENT. NE PAS TOUCHER, AFIN DE REDUIRE LES RISQUES DE BRULURES. LE COURANT DE RETOUR INJECTE DANS LE MODULE PV EST TOUJOURS NUL.



440W/5-60V/15A
8-60V/14.5A
1V
NA02 SM3123-0180B0FCF-01
Mexico S440-1GM4MRM





OR 2000V SUN RES -40°C VW-1 DCM-GMEE

VG 105°C DRY 90°C WET

PHOTOVOLTAIC MODULE

Modules assembled in the USA from solar cells made in Vietnam

Solar Module Type: JKM390M-72H8L-V

Maximum Power(Pmax)	390W
Power Measurement Tolerance	±3%
Maximum Power Voltage(Vmp)	39.64V
Maximum Power Current(Imp)	9.84A
Open Circuit Voltage(Voc)	48.60V±3%
Short Circuit Current(Isc)	10.46A±4%
Maximum System Voltage	1500VDC
Maximum Overcurrent Protection Rating	20A
Power Sorting	0~+3%
Protection Class	II
Fire Class	Type 1(UL1703)/Class C(IEC61730)
Weight	22.5(kg)
Dimension	2008×1002×40(mm)
STC:	1000W/m ² , AM1.5, 25°C
Current Sorting	I1



Fire Type: See installation instructions for installation requirement to achieve a specified system fire class rating with this product.

For field connections, use 12 AWG Cu wire only, insulated for a minimum of 90°C.



WARNING

ONLY qualified personnel should install or perform maintenance work on these modules

BE AWARE of dangerous high DC voltage when connecting modules

DO NOT damage or scratch the rear surface of the module

SEE module literature for appropriate mating connectors

DO NOT disconnect the cables or connectors under load



AVERTISSEMENT

SEUL les professionnels peuvent installer et maintenir les éléments

PRENDRE GARDE de la haute tension continue lorsque les éléments sont connectés

IL EST interdit d'endommager ou d'arracher les éléments

VOIR les infos modules pour les connecteurs de raccordement appropriés

Ne déconnectez pas le câble ou le connecteur sous charge

Pour les raccords sur le terrain, n'utiliser un câble isolé en cuivre de 12 AWG avec un minimum de 90°C.



1
8
0

SECURED BY
ADT
(800) ADT-ASAP
ADT.COM

