

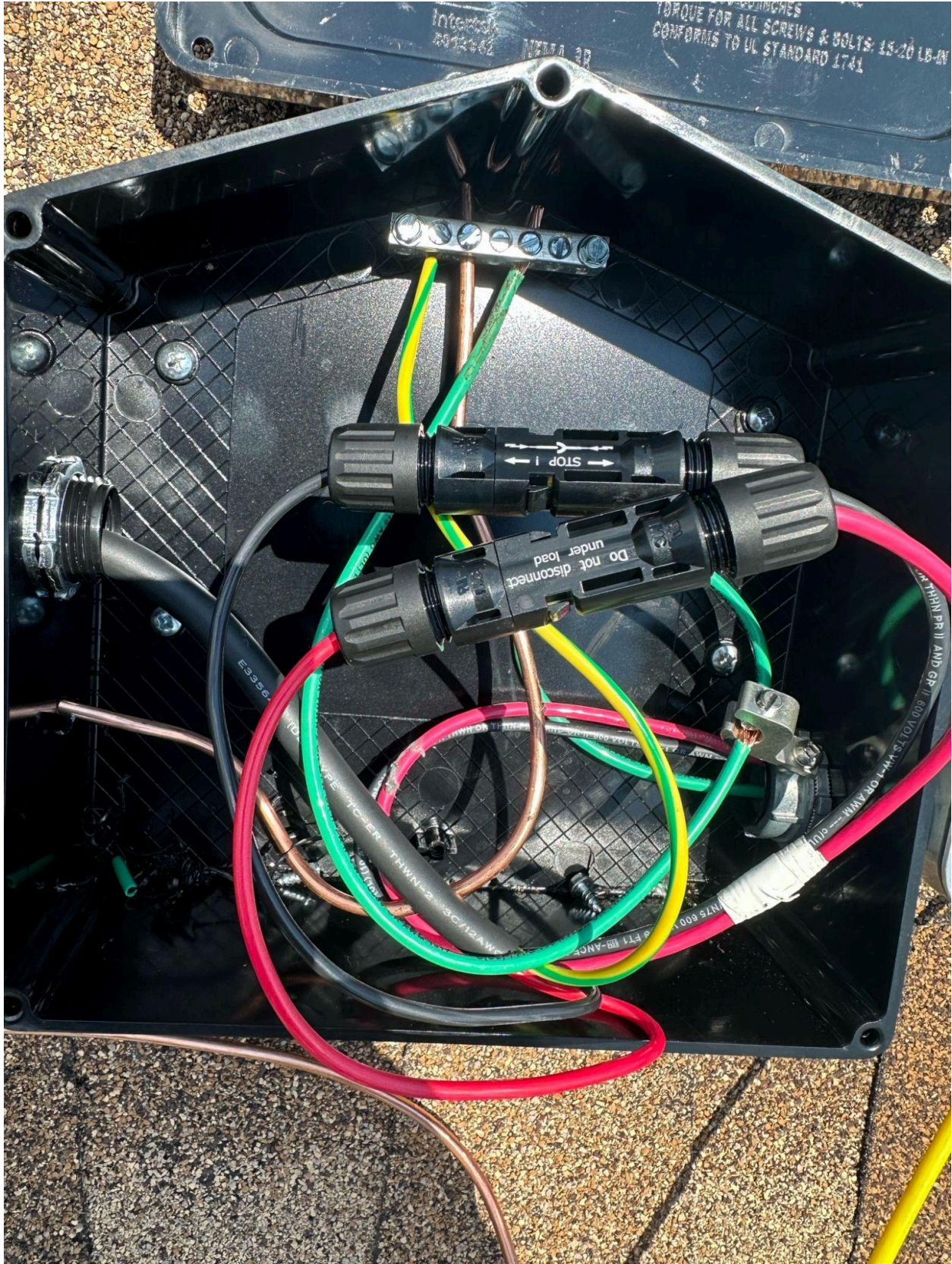


DALEY

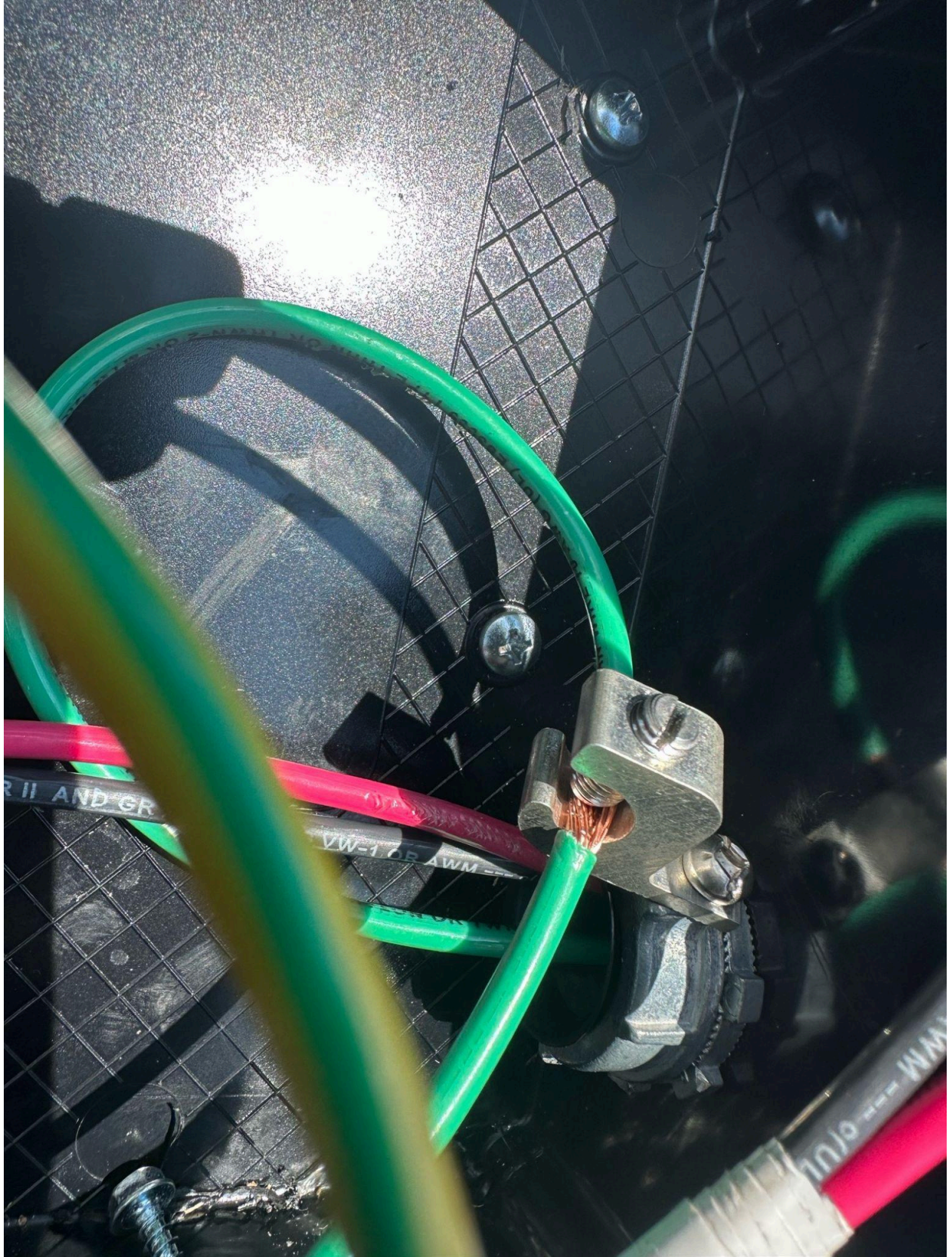
EZZ
SOLAR

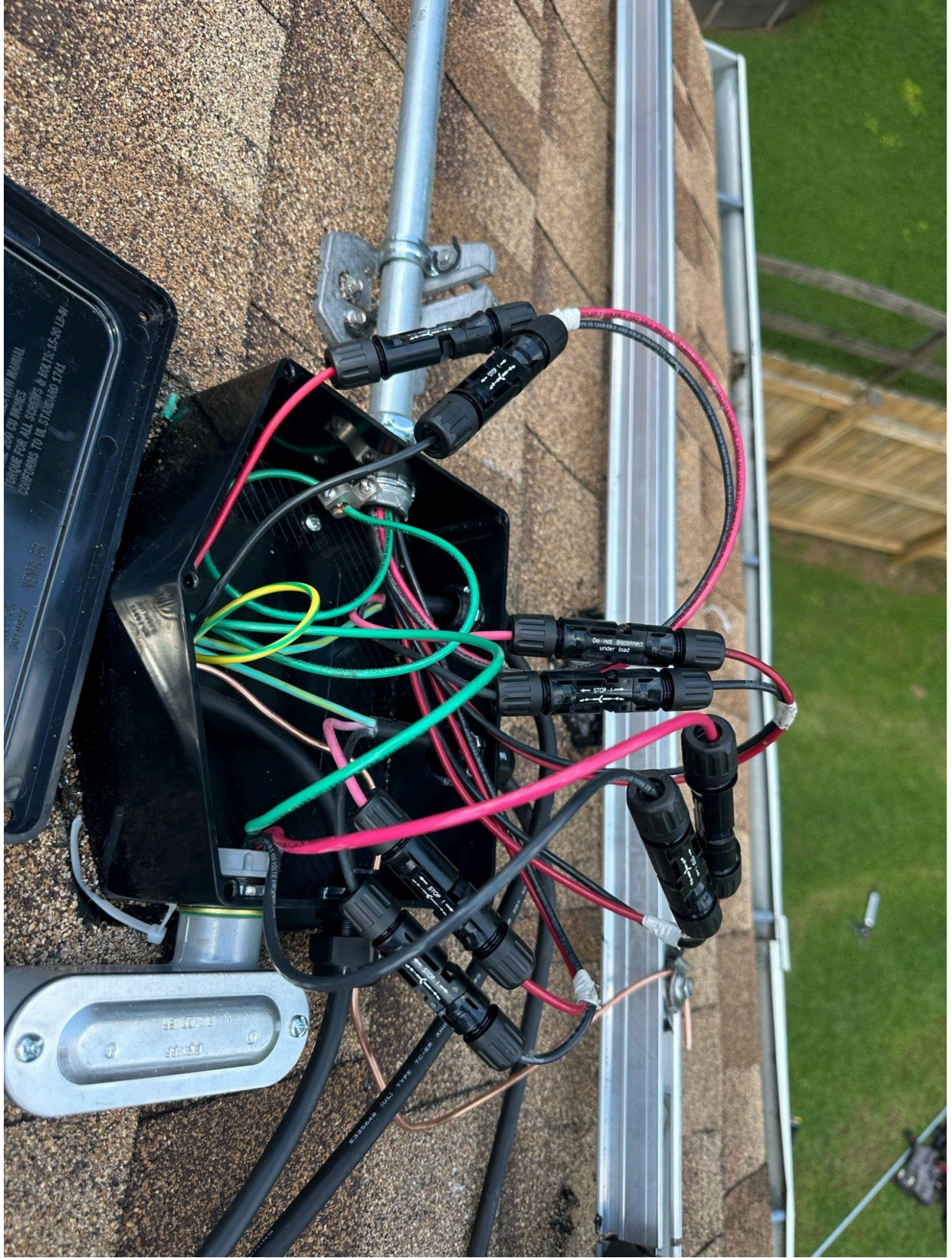
JB-1XL

40 ADRIAN STREET
HOLLY SPRINGS NC
27540









NEVER OPEN THE JUNCTION BOX
UNTIL THE POWER IS OFF
FOR ALL SCREWS & BOLTS - 1/4" x 1/4"
NEMA 3W

ENCLOSURE
SERIAL

STOP
Do not disconnect
under load

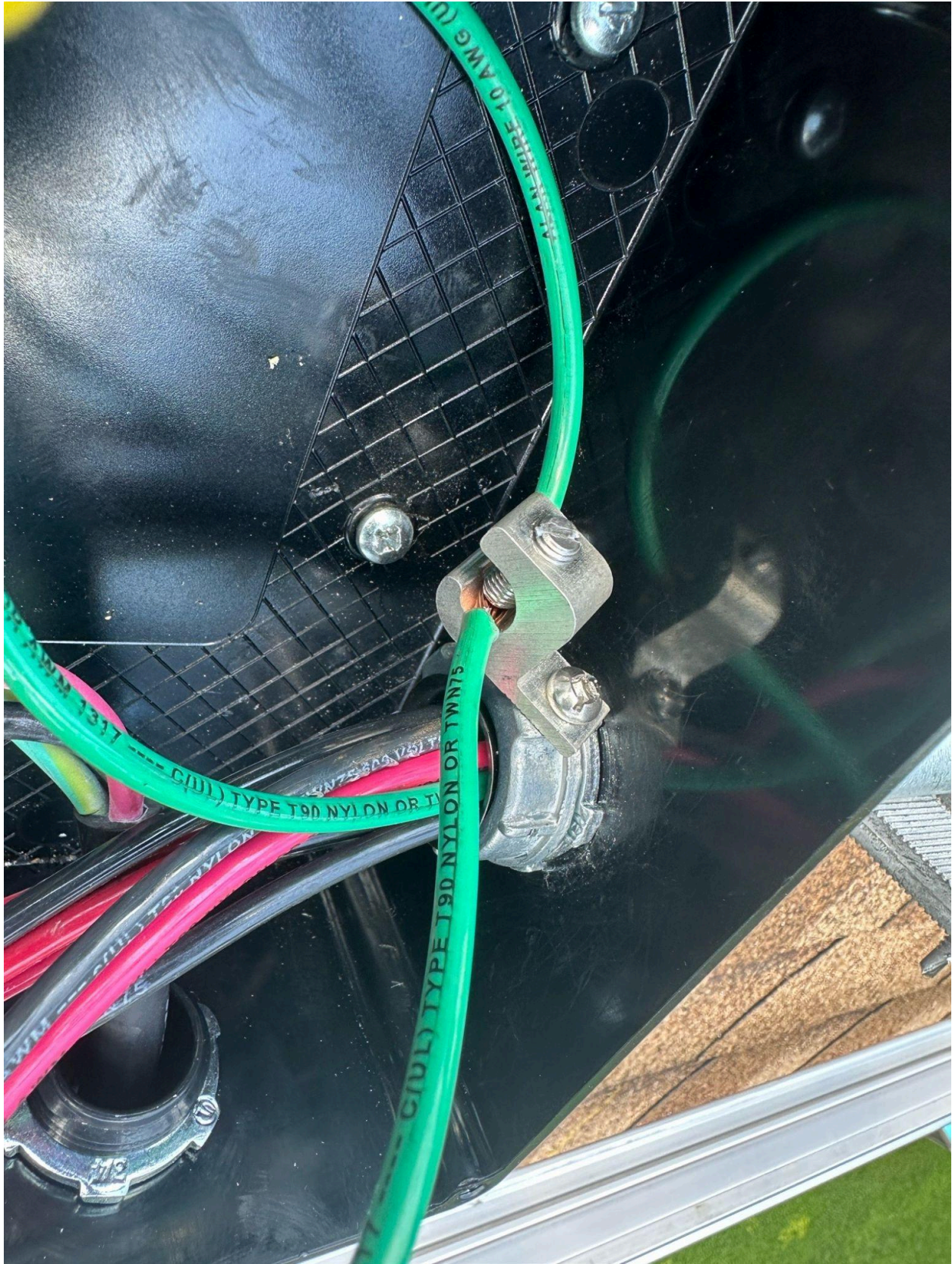
STOP
Do not disconnect
under load

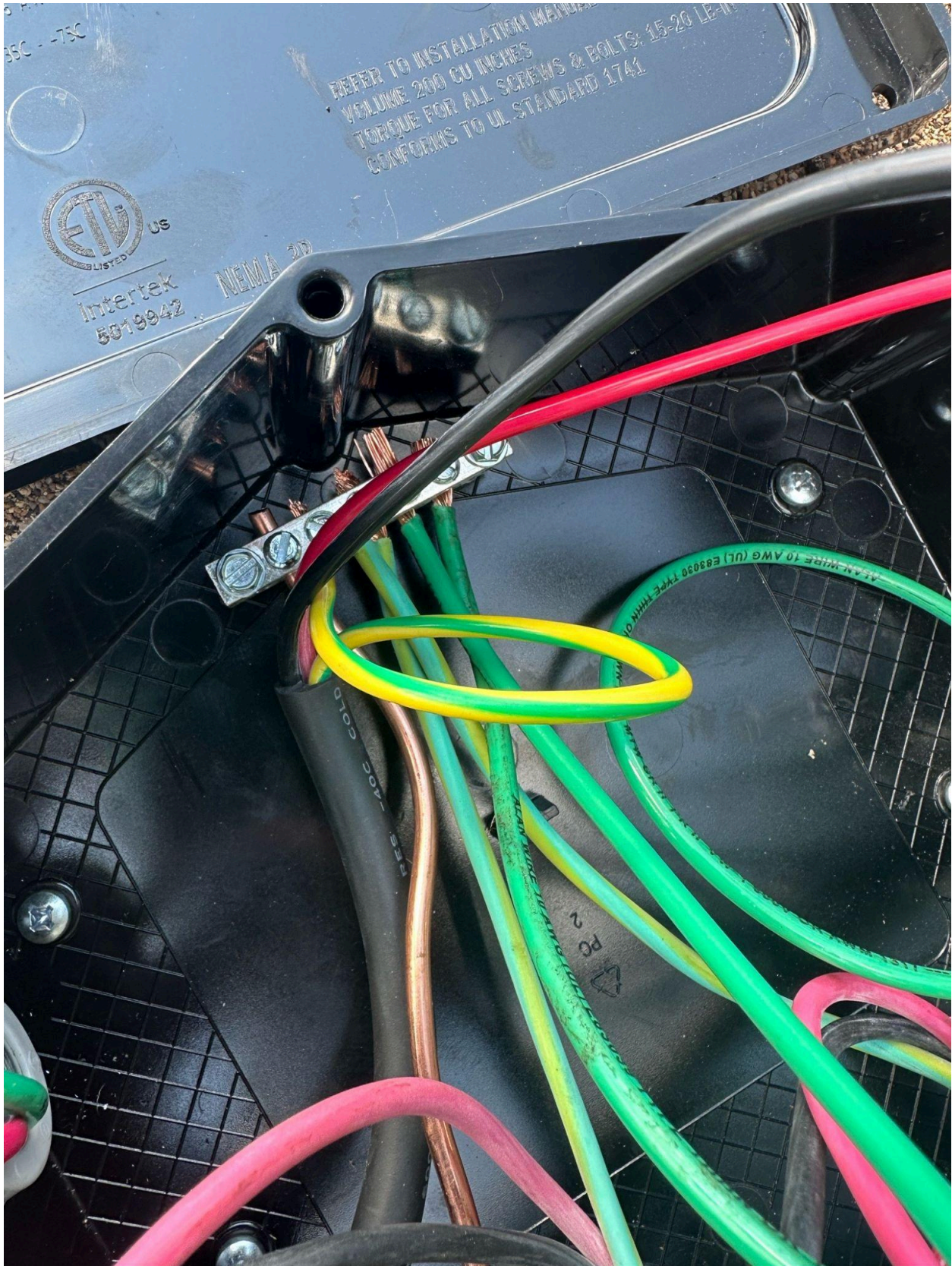
STOP
Do not disconnect
under load

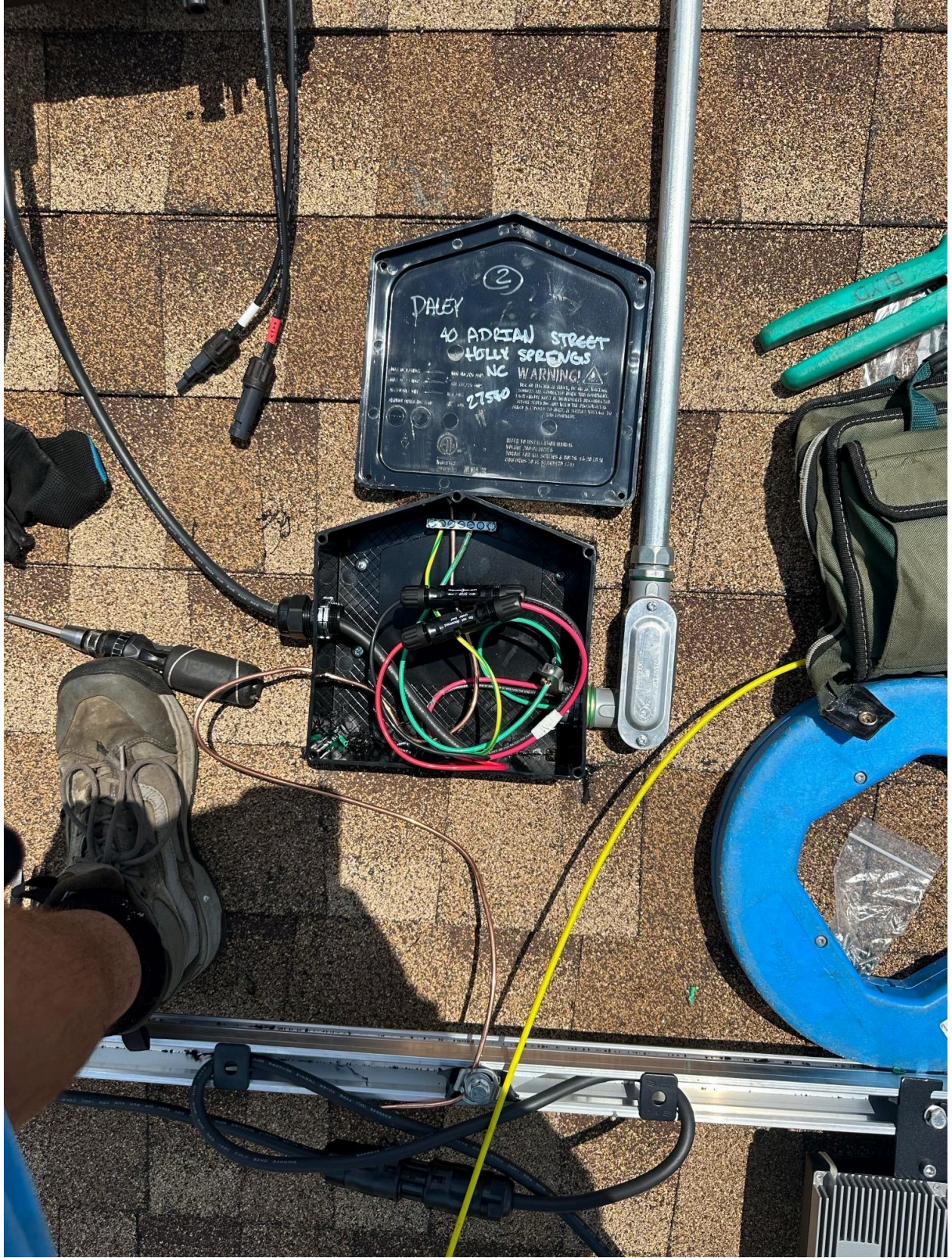
STOP
Do not disconnect
under load

STOP
Do not disconnect
under load

STOP
Do not disconnect
under load











VS32211120059H



Photovoltaic Module

Module Type:	FBM400MFG-BB
Maximum Power(Pmpp):	400W
Open Circuit Voltage(Voc):	37.20V±3%
Short Circuit Current(Isc):	13.68A±3%
Maximum Power Voltage(Vmpp):	31.17V
Maximum Power Current(Imp):	12.84A
Max System Voltage:	1000V
Tolerance of Pmpp:	±3%
Power Sorting:	0~+5W
Series Fuse Rating:	30A
Dimension:	1723x1133x35(mm)
Weight:	21.7kg
Standard Test Condition:	1000W/m ² , 25°C, AM1.5
PV module classification:	Type 2(For USA only) Class C(For Canada only)



See Installation Instructions for
Installation Requirements to
Achieve a Specified System Fire
Class Rating with this Product
650812



WARNING
Hazardous Electricity can shock,
burn or cause death. Do not
touch terminals.
L'Électricité dangereuse peut le faire
Choc électrique ou échauffement.
pas le terminal.



United Renewable Energy Co., Ltd
7, Li-Hsin 3rd Rd., Hsinchu Science Park, Hsinchu, Taiwan

Module Assembly: VN
<http://www.urecorp.com/>





