



ENPHASE.

IQ Combiner 4

Photovoltaic
Combiner Box

X2-IQ-AM1-240-4

IEEE1547:2018 COMPLIANT



Electrical ratings

Voltage 240VAC, 60Hz
 DG Breakers 80A MAX (combined)
 DG Inputs 64A MAX (combined)
 Output 65A MAX; 90A MAX feeder OCPD
 Temperature -46°C MAX ambient
 For DG breaker, use only Eaton BR series.

202308144777

P/N:

202308144777

883-00363 13 8431

Dedicated solar and DG Combiner box - do not add loads.
10 AMP or 15 AMP IQ Gateway Breaker not used for backfeed

Connection	Wire size	Torque
DG Breaker (1, 2, 3, 4)	14-10 AWG	2.2 Nm (20 lb-in)
	8 AWG	2.8 Nm (25 lb-in)
	6-4 AWG	3.0 Nm (27 lb-in)
60A Circuit Breaker only	4-10 AWG	3.0 Nm (25 lb-in)
	14-10 AWG	2.26 Nm (20 lb-in)
IQ Gateway Breaker	1 large screw	5.6 Nm (45 lb-in)
	Small screw	5.1 Nm (45 lb-in)
Neutral and ground	5 AWG	3.5 Nm (32 lb-in)
	8 AWG	2.6 Nm (23 lb-in)
	10-14 AWG	2.3 Nm (20 lb-in)
Main lug	10-4 AWG	5.0 Nm (45 lb-in)
	1-2-0 AWG	3.5 Nm (30 lb-in)

Combiner conductors only, rated min. 75°C.
 Follow NFPA 70 (NEC), or CSA C22.1 part 1, and all local codes.
 For DG Breakers larger than 20A, use wire insulated for 90°C
 based on 75°C ampacities.

Designed in California and New Zealand
 Made in Mexico

FUR

SOLAR BREAK



⚠ WARNING
INVERTER OUTPUT CONNECTION
DO NOT RELOCATE
THIS OVERCURRENT
DEVICE



DEP
INTENSE



DO NOT TOUCH
THIS EQUIPMENT

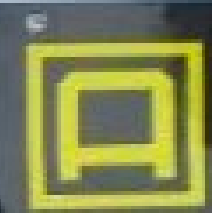
240VTL
GARAGE
RANGE
A/C



SOLAR BREAKER

WARNING
INVERTER SUPPLY CONNECTION
DO NOT RELOCATE
THIS COMPONENT
DEVICE

⚠ DANGER
ELECTRIC SHOCK
DEATH OR SERIOUS INJURY
CAN OCCUR IF YOU
DO NOT PROPERLY
GROUND THE
EQUIPMENT.
⚠ PELIGRO
ELECTRIC SHOCK
DEATH OR SERIOUS INJURY
CAN OCCUR IF YOU
DO NOT PROPERLY
GROUND THE
EQUIPMENT.



SQUARE D™

GENERAL DUTY
SAFETY SWITCH
INTERRUPTOR DE
SEGURIDAD DE
SERVICIO GENERAL
60 A
240 Vac / V~



▲ DANGER / PELIGRO

HAZARD OF ELECTRIC SHOCK, EXPLOSION, OR ARC FLASH
PELIGRO DE DESCARGA ELÉCTRICA, EXPLOSIÓN O
RESQUELLO POR ARQUEO

Only accessories permitted provide maximum (MVA) and follow safe electrical work practices. See NFPA 70E.

This equipment must only be installed and serviced by qualified electrical personnel.

Never operate energized switch with door open - heavy door lockout.

Turn off power before removing or installing fuses to prevent fatal electric shock.

Always use a properly rated voltage sensing device at all line and load side clips to verify deenergized.

Turn off power supplying switch before doing any other work on or inside switch. Do not use removable insulators in fused switches.

Failure to follow these instructions will result in death or serious injury.

For full instructions, please visit our website through link in literature and Safety Manual.

60074-001-01

**RAPID SHUTDOWN
SWITCH FOR
SOLAR PV SYSTEM**

**PHOTOVOLTAIC SYSTEM
AC DISCONNECT**
RATED AC OUTPUT CURRENT **A**
NOMINAL OPERATING AC VOLTAGE **V**

29.7
240

▲ WARNING

ELECTRIC SHOCK HAZARD

TERMINALS ON THE LINE AND
LOAD SIDES MAY BE ENERGIZED
IN THE OPEN POSITION

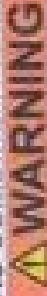
ON

OFF



ENPHASE.

PHOTOVOLTAIC SYSTEM
AC COMBINER PANEL



WARNING

**AUTHORIZED
PERSONNEL ONLY**

DO NOT ADD LOADS

**NO DC WIRES PRESENT
RAPID SHUTDOWN
TEST NOT REQUIRED**







Verfassen
238 04 Faxmod
GN verfahren
27546

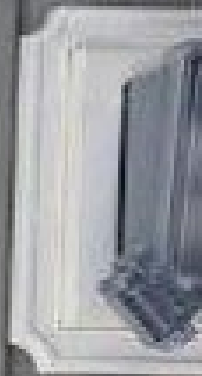


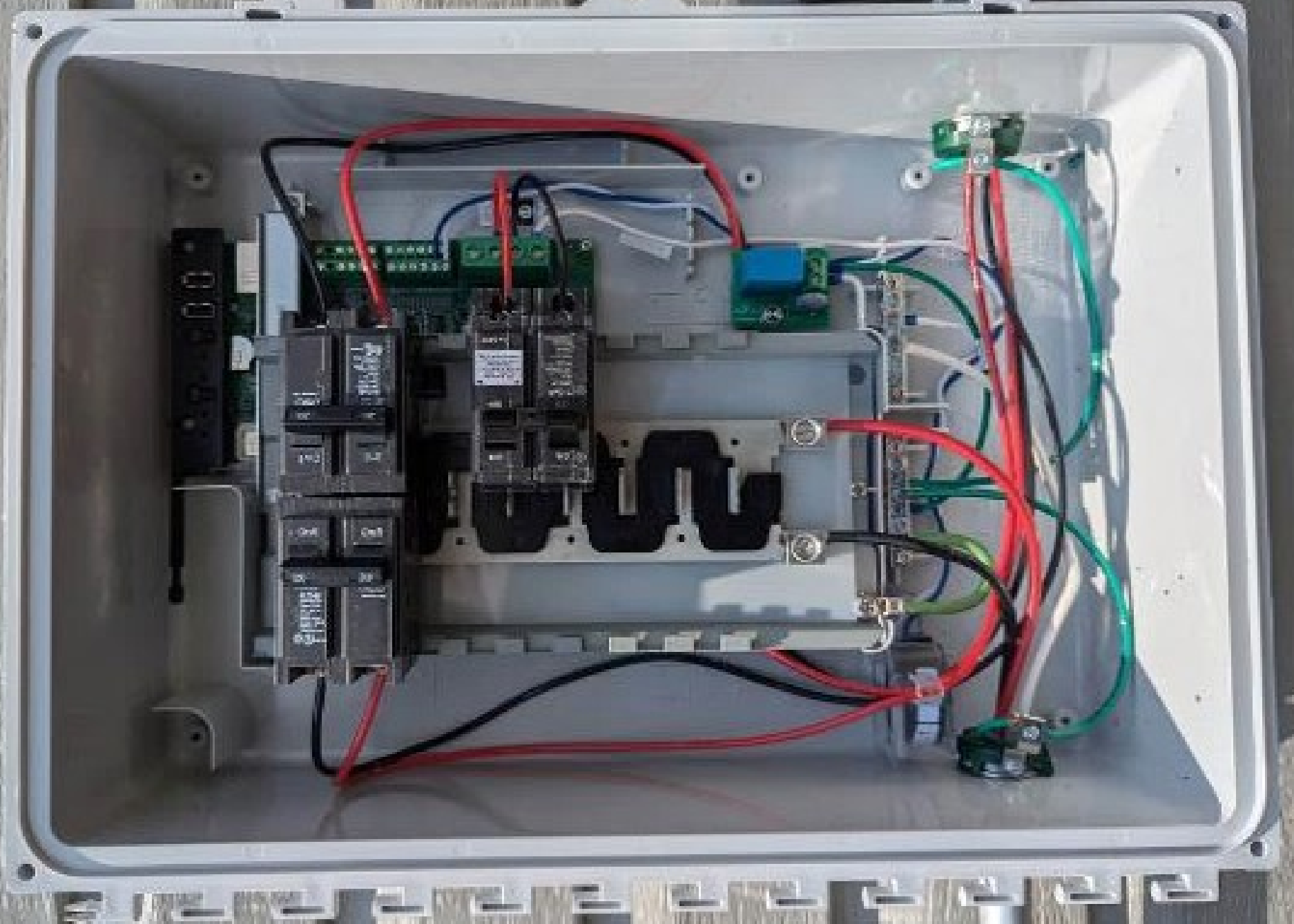
Wilmington
239 OH Colonial
Way Wilmington NC
27546

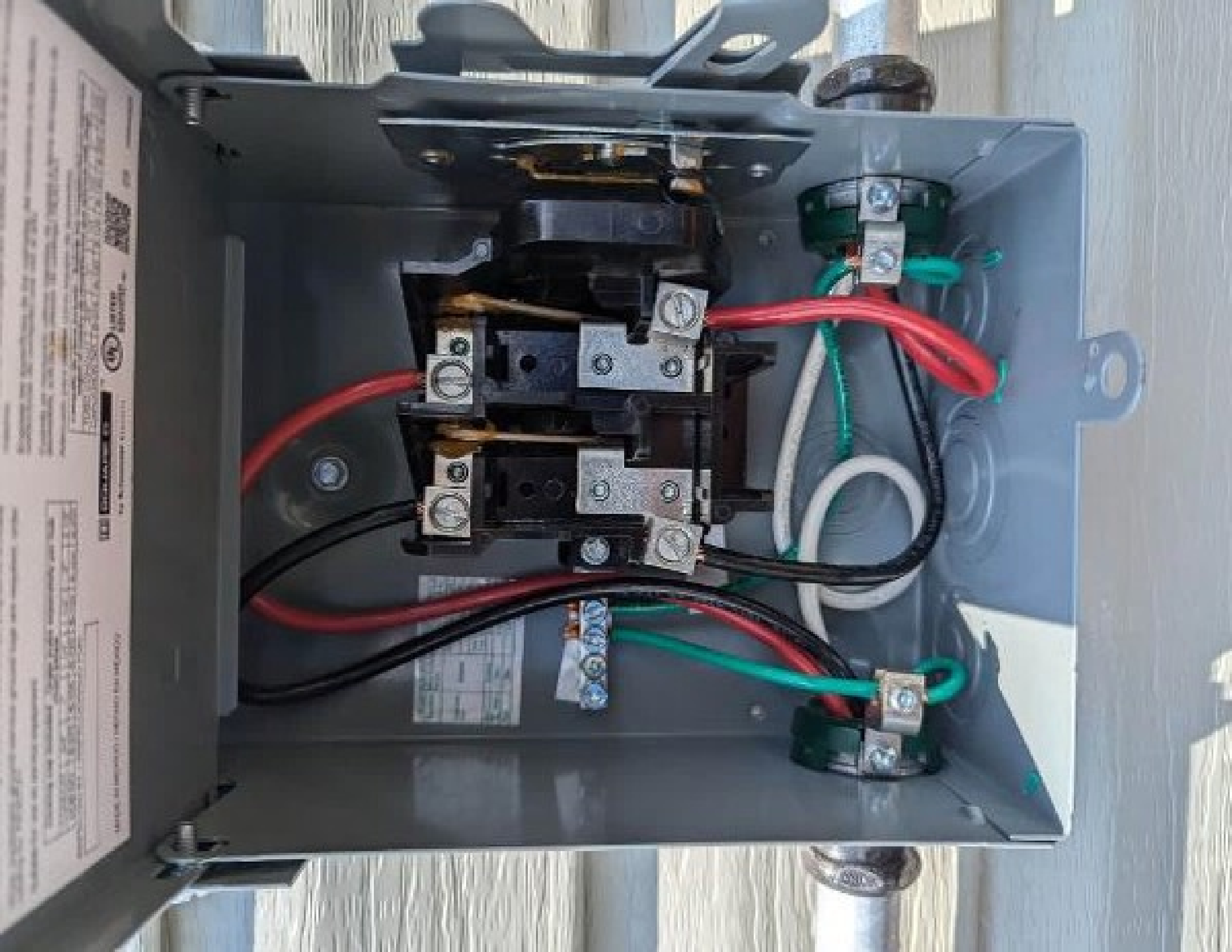


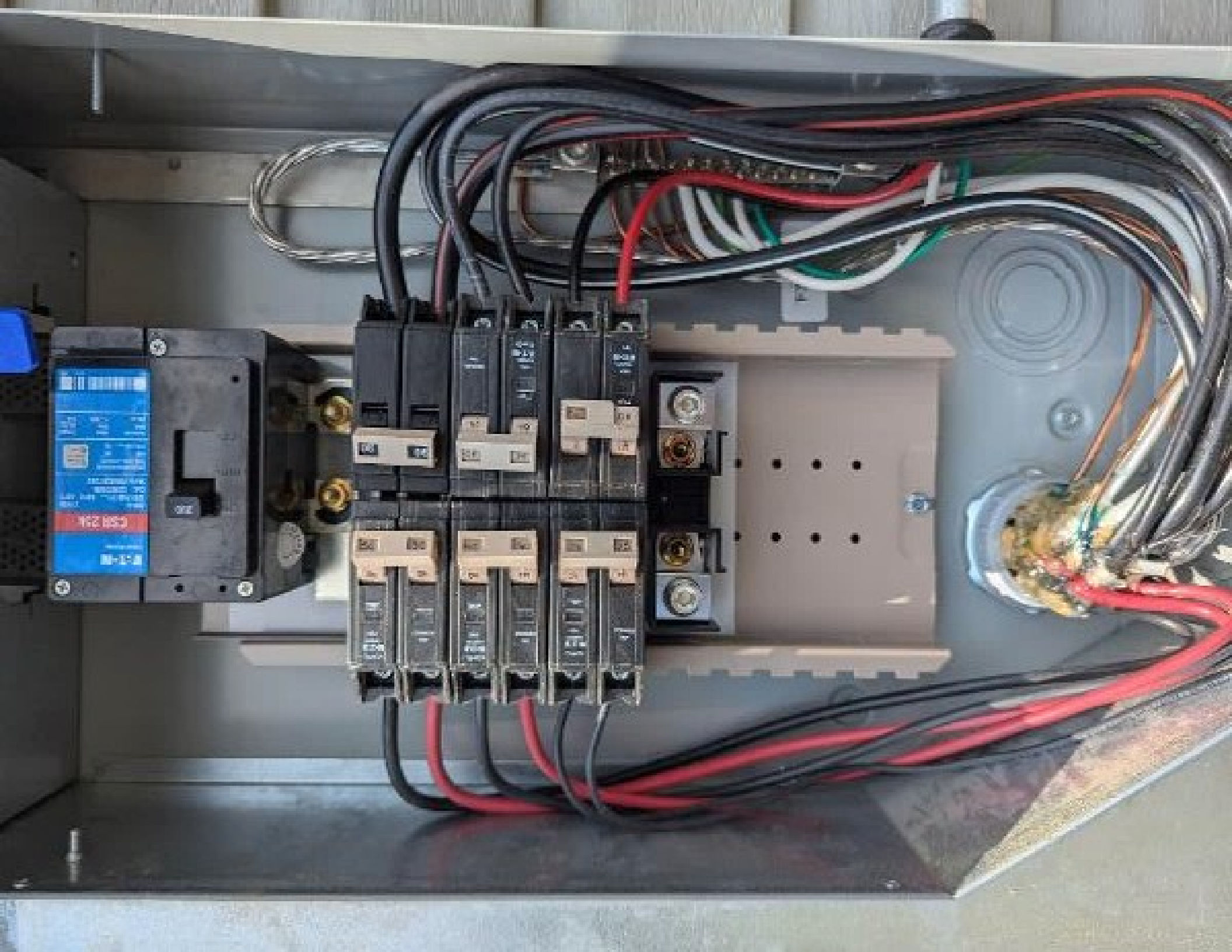












Power Production

Enabled

Production

Today

0.00 kWh

Lifetime

0.00 kWh

Consumption

Today

0.00 kWh

Lifetime

0.00 kWh

Grid Profile

IEEE 1547 default 2015 (7.0.1.1)

Powerline Scan (Auto)

Scan

Powerline Scan (Auto)



Connect gateway to Enphase cloud via:

-  Wi-Fi
-  Spectrum Setup FB
-  Ethernet
-  Cellular

Disconnect from all gateway



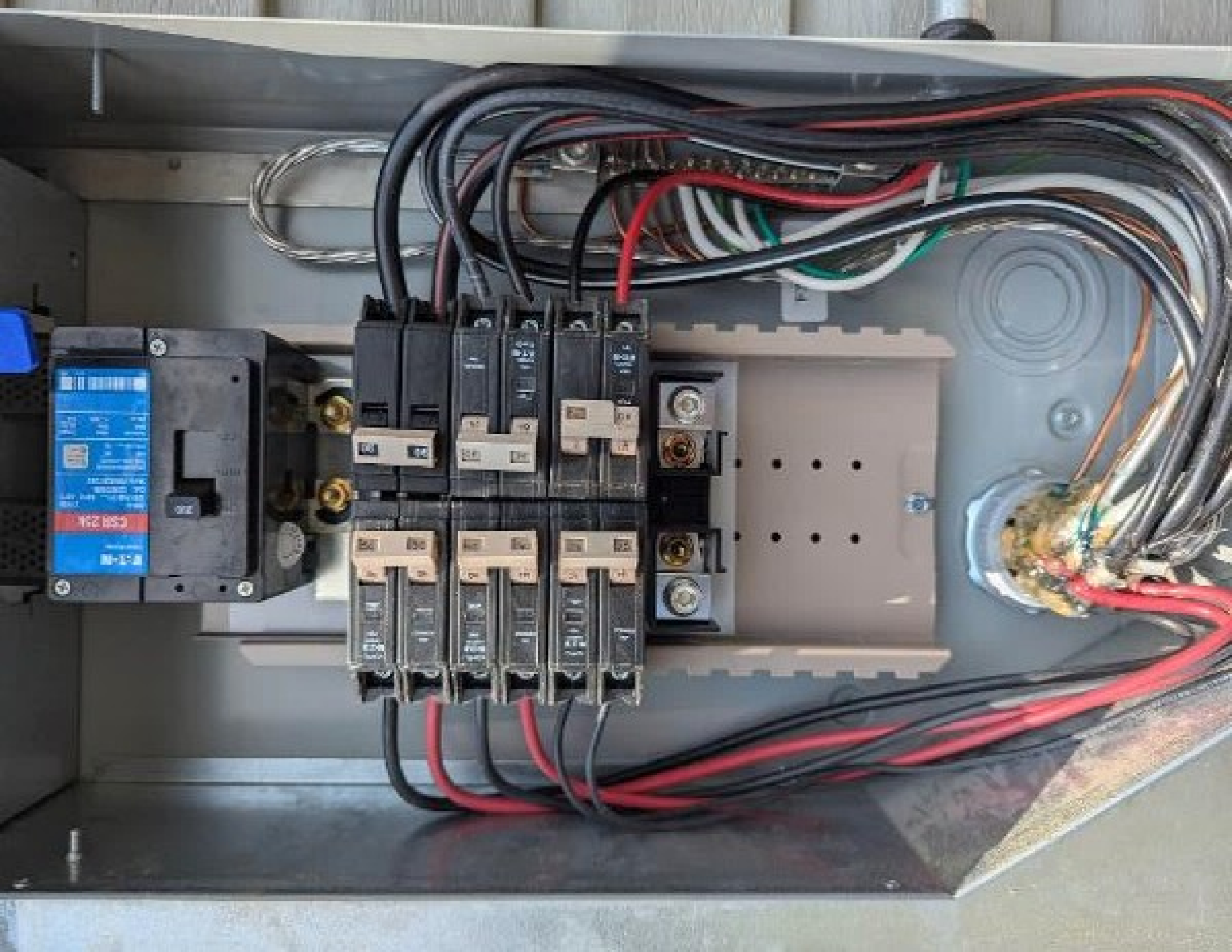


WARNING
ON INDIVIDUAL CIRCUITS,
DO NOT REMOVE THE
FUSE UNTIL YOU HAVE
DELETED ALL POWER
FROM THE CIRCUIT.
ALWAYS WEAR YOUR
SAFETY BELT AND WEAR
YOUR SEATBELT
CORRECTLY FOR MOST
SAFETY. ALWAYS USE
THE 2010 CHRYSLER 48V
VEHICLE BATTERY.
ALWAYS USE THE 2010
CHRYSLER 48V VEHICLE BATTERY.

Always use the correct fuse size and type for the circuit. Do not use a fuse that is larger than the circuit is designed for. Do not use a fuse that is smaller than the circuit is designed for. Do not use a fuse that is not the correct type for the circuit.

ALL ELECTRICAL WORK MUST BE DONE BY A QUALIFIED TECHNICIAN.









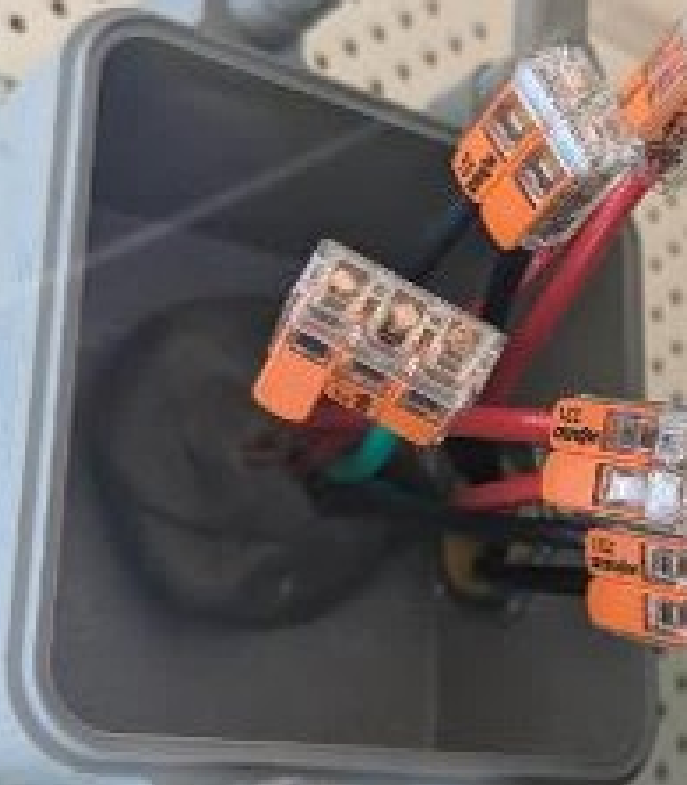
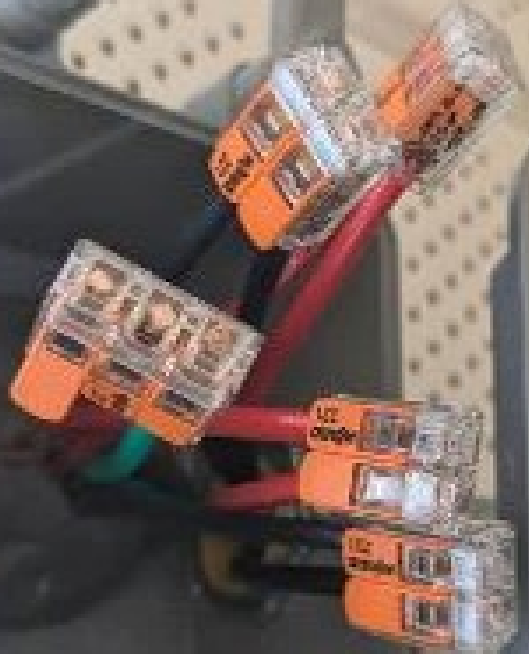




Verfahren
238 0H Station
GN verfahren
Weg 11111111 km
27522



Wilmington
238 OH Colonial
Way Wilmington NC
27546





20890010VAC25

WELLSERVO



Made in the USA
from imported parts



WARNING
This generator is designed to be used as a portable power source for emergency backup power only. It is not intended for use as a primary power source. Do not use this generator to power sensitive electronic equipment. Always use proper grounding techniques. Read the manual for complete safety instructions.

ENPHASE
108M

ATTENTION: Read the manual for complete safety instructions. This generator is designed to be used as a portable power source for emergency backup power only. It is not intended for use as a primary power source. Do not use this generator to power sensitive electronic equipment. Always use proper grounding techniques. Read the manual for complete safety instructions.



Matthew Dixon
 8/10/2018

Job Hazard Analysis
238 old fashion way
 Gilman, Levee RAVEN

Activity	Frequency	Severity	Control Measures	Residual Risk	Responsible Party	Completion Date
1. Enter site	1	Low	1. Wear safety glasses 2. No running or horseplay	1. No running or horseplay 2. No running or horseplay	1. Safety glasses 2. No running or horseplay	EP
2. Walk on the levee	1	Low	1. Stay on the path 2. No running or horseplay	1. Stay on the path 2. No running or horseplay	1. Stay on the path 2. No running or horseplay	EP
3. Use the restroom	1	Low	1. Use the restroom 2. No running or horseplay	1. Use the restroom 2. No running or horseplay	1. Use the restroom 2. No running or horseplay	EP
4. Walk on the levee	1	Low	1. Stay on the path 2. No running or horseplay	1. Stay on the path 2. No running or horseplay	1. Stay on the path 2. No running or horseplay	EP
5. Use the restroom	1	Low	1. Use the restroom 2. No running or horseplay	1. Use the restroom 2. No running or horseplay	1. Use the restroom 2. No running or horseplay	EP
6. Walk on the levee	1	Low	1. Stay on the path 2. No running or horseplay	1. Stay on the path 2. No running or horseplay	1. Stay on the path 2. No running or horseplay	EP
7. Use the restroom	1	Low	1. Use the restroom 2. No running or horseplay	1. Use the restroom 2. No running or horseplay	1. Use the restroom 2. No running or horseplay	EP

Date: 8/10/2018
 Signature: *Matthew Dixon*
 Title: *SA*





REVERSE SIDE OF THE LABEL

SILFAB SOLAR[®] SILFAB PRIME SIL-420 QD

ELECTRICAL SPECIFICATIONS
Standard Test Conditions: 1000 W/m² Irradiance, 25°C Cell Temperature
Standard Test Conditions: 1000 W/m² Irradiance, 25°C Cell Temperature
Standard Test Conditions: 1000 W/m² Irradiance, 25°C Cell Temperature

Maximum Power (P _{max}) At Standard Test Conditions	400 W
Maximum Power Voltage (V _{mp}) At Standard Test Conditions	38.0V
Maximum Power Current (I _{mp}) At Standard Test Conditions	10.53A
Open Circuit Voltage (V _{oc}) At Standard Test Conditions	48.4V
Short Circuit Current (I _{sc}) At Standard Test Conditions	13.08 A
Maximum System Voltage Per UL 1741 and NEC 690.8	1500 V
Series Fuse	20A
Fuse Rating	20A



For the complete information on electrical safety, please refer to the safety manual.
For the complete information on the electrical safety, please refer to the safety manual.
For the complete information on the electrical safety, please refer to the safety manual.



Complies to UL 1741
Certified to CSA C805



TO DOWNLOAD INSTALLATION MANUAL,
OR DATASHEET, SCAN QR CODE OR
GO TO: WWW.SILFABSOLAR.COM
Made in Canada

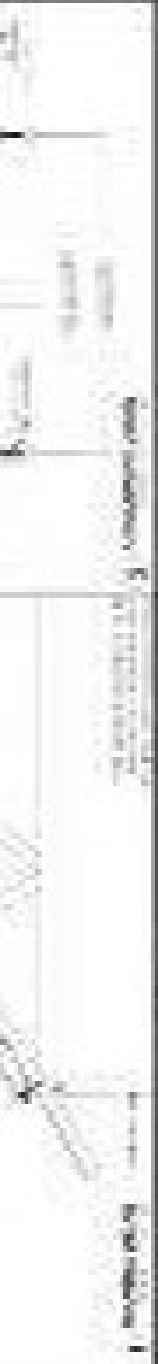












1. Simple circuit

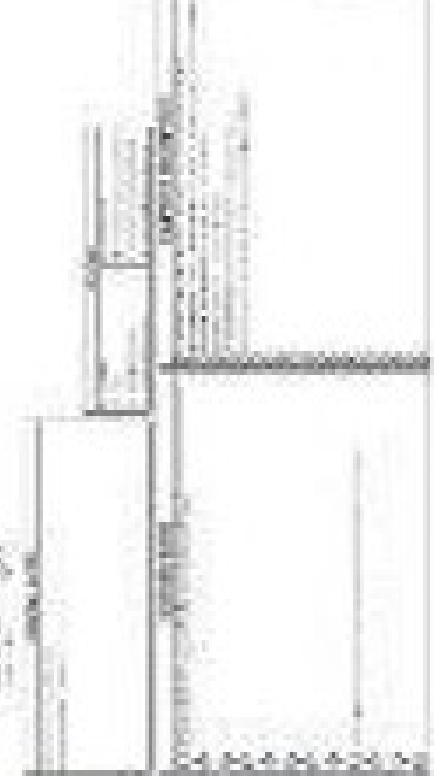
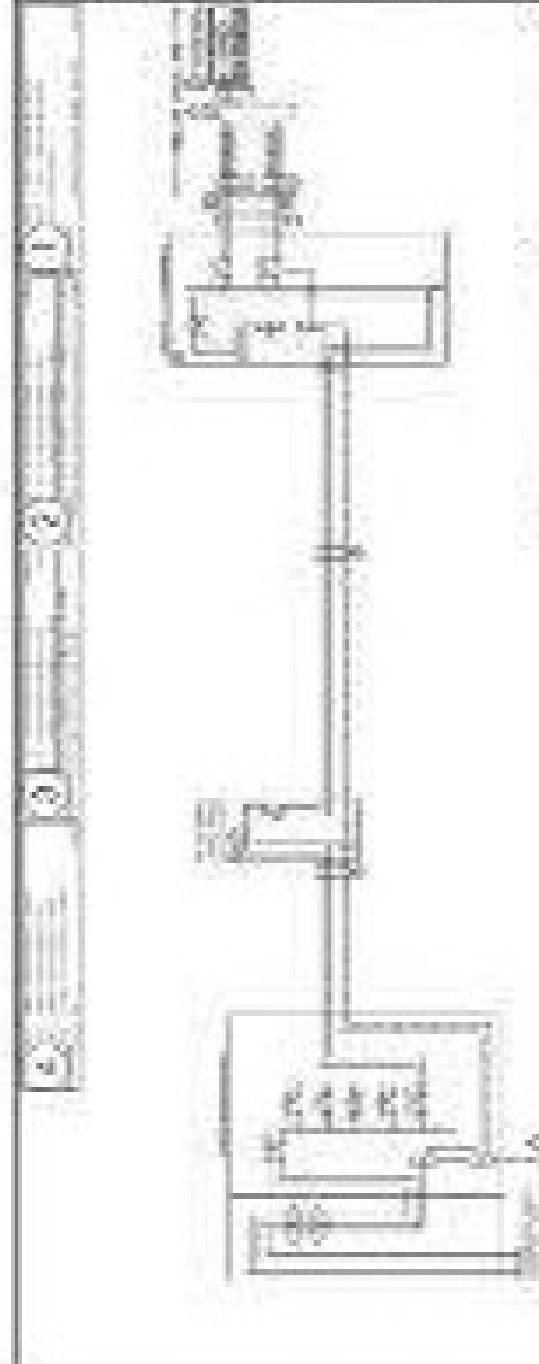
2. Parallel circuit

3. Series circuit



4. Parallel circuit

Department of Education
South Africa



Department of Education
South Africa

Grade 7
Science
Term 1
2014

1. Simple circuit

2. Parallel circuit

3. Series circuit

4. Parallel circuit

5. Parallel circuit

6. Parallel circuit

7. Parallel circuit

8. Parallel circuit

9. Parallel circuit

10. Parallel circuit

11. Parallel circuit

12. Parallel circuit

13. Parallel circuit

14. Parallel circuit

15. Parallel circuit

16. Parallel circuit

17. Parallel circuit

18. Parallel circuit

19. Parallel circuit

20. Parallel circuit

21. Parallel circuit

22. Parallel circuit

23. Parallel circuit

24. Parallel circuit

25. Parallel circuit

26. Parallel circuit

27. Parallel circuit

28. Parallel circuit

29. Parallel circuit

30. Parallel circuit

31. Parallel circuit

32. Parallel circuit

33. Parallel circuit

34. Parallel circuit

35. Parallel circuit

36. Parallel circuit

37. Parallel circuit

38. Parallel circuit

39. Parallel circuit

40. Parallel circuit

41. Parallel circuit

42. Parallel circuit

43. Parallel circuit

44. Parallel circuit

45. Parallel circuit

46. Parallel circuit

47. Parallel circuit

48. Parallel circuit

49. Parallel circuit

50. Parallel circuit

51. Parallel circuit

52. Parallel circuit

53. Parallel circuit

54. Parallel circuit

55. Parallel circuit

56. Parallel circuit

57. Parallel circuit

58. Parallel circuit

59. Parallel circuit

60. Parallel circuit

61. Parallel circuit

62. Parallel circuit

63. Parallel circuit

64. Parallel circuit

65. Parallel circuit

66. Parallel circuit

67. Parallel circuit

68. Parallel circuit

69. Parallel circuit

70. Parallel circuit

71. Parallel circuit

72. Parallel circuit

73. Parallel circuit

74. Parallel circuit

75. Parallel circuit

76. Parallel circuit

77. Parallel circuit

78. Parallel circuit

79. Parallel circuit

80. Parallel circuit

81. Parallel circuit

82. Parallel circuit

83. Parallel circuit

84. Parallel circuit

85. Parallel circuit

86. Parallel circuit

87. Parallel circuit

88. Parallel circuit

89. Parallel circuit

90. Parallel circuit

91. Parallel circuit

92. Parallel circuit

93. Parallel circuit

94. Parallel circuit

95. Parallel circuit

96. Parallel circuit

97. Parallel circuit

98. Parallel circuit

99. Parallel circuit

100. Parallel circuit









UNIRAC SFM INFINITY RACKING
FOR MOUNTING AND GROUNDING SOLAR SYSTEMS

UL 1703, UL 2703







238

