

129

OUT

DC Output: 440W/5-60V/15A
DC Input: 8-60V/14.5A
Open Circuit Voltage: 1V
NA02 SM3223-0180E3BCF-30
Mexico S440-1GM4MRM



0180E3BCF-30



Do Not Remove



180E3BCF-30



SolarEdge Technologies Ltd.
SolarEdge Technologies GmbH/
Werner-Eckert-Str. 6/81829 Munich/Germany

FC

SolarEdge Technologies Ltd.
Power Optimizer

Solaredge Technologies GmbH/
Werner-Eckert-Str. 6/81829
Munich/Germany

CAUTION

HOT SURFACES-TO REDUCE THE RISK OF BURNS-DO NOT TOUCH. RISK OF ELECTRIC SHOCK-WHEN THE PHOTOVOLTAIC ARRAY IS EXPOSED TO LIGHT, IT SUPPLIES A DC VOLTAGE TO EQUIPMENT. COVER PV MODULE WITH OPAQUE MATERIAL BEFORE CONNECTING OR DISCONNECTING THIS OPTIMIZER. DURING FAULT, ZERO CURRENT IS SOURCED INTO DC ARRAY BY CONVERTER.

WARNING ELECTRIC SHOCK HAZARD. THE DC CONDUCTORS OF THIS PHOTOVOLTAIC SYSTEM ARE UNGROUNDED AND MAY BE ENERGIZED.

AVERTISSEMENT

RISQUE DE CHOC ELECTRIQUE: QUAND LE CHAMP PHOTOVOLTAIQUE EST EXPOSE A LA LUMIERE, UNE TENSION CC EST FOURNIE A CET EQUIPEMENT. SURFACES CHAUDES: NE PAS TOUCHER, AFIN DE REDUIRE LES RISQUES DE BRULURES. LE COURANT DE RETOUR INJECTE PAR LE CONVERTI SEUR EN CAS DE DEFAILLANCE DANS LE MODULE PV EST TOUJOURS NUL.



STRINGS

MODULE

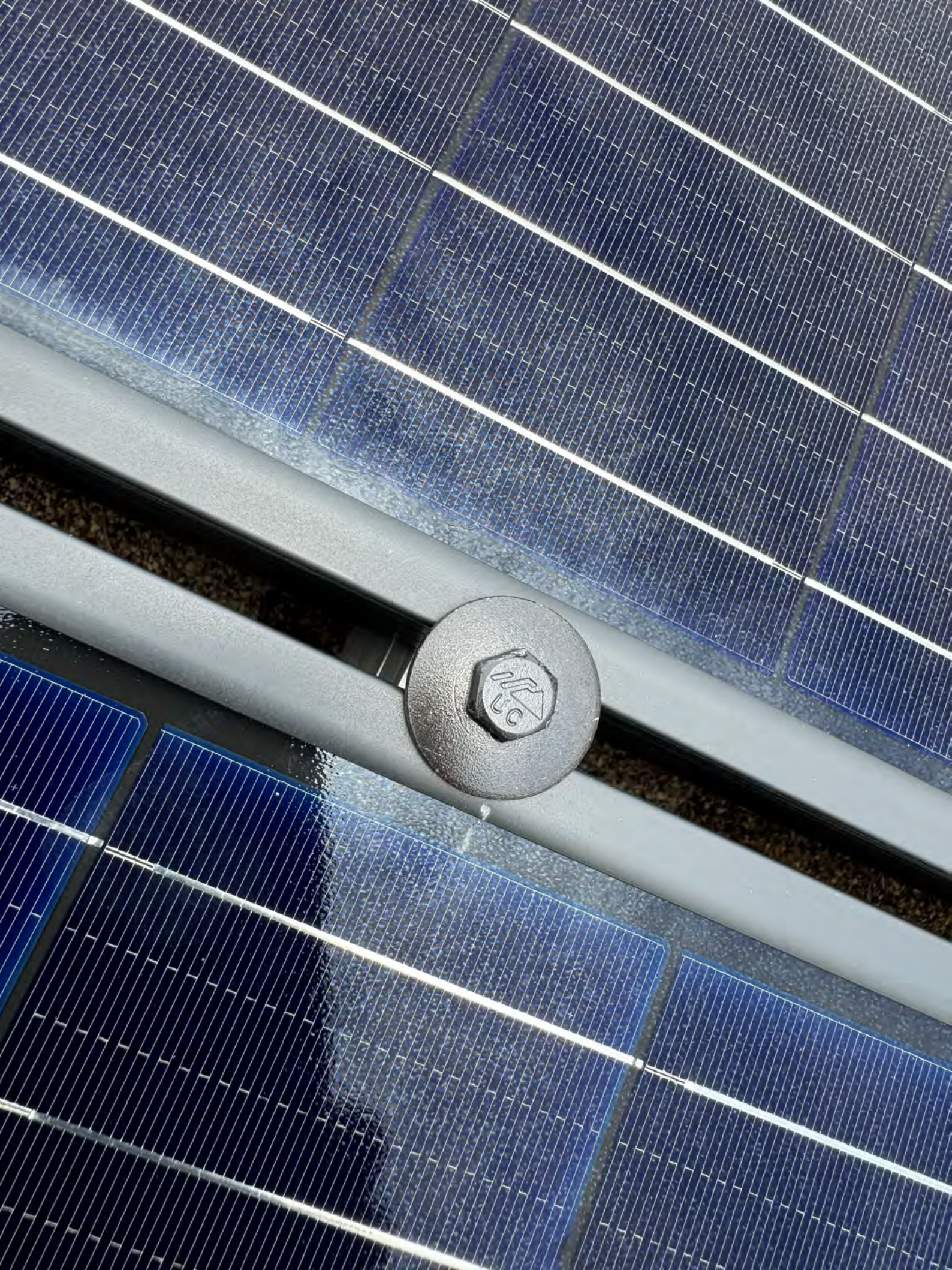














Jinko Solar

Building Your Trust In Solar

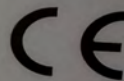
Jinko Solar Co., Ltd.
No.1, Yingbin Road, Economic Development Zone,
Shangrao City, 334100 Jiangxi, P.R. China
www.jinkosolar.com

PHOTOVOLTAIC MODULE

Modules assembled in the USA from solar cells made in Vietnam

Solar Module Type : JKM395M-72HBL-V

Maximum Power(Pmax)	395W
Power Measurement Tolerance	±3%
Maximum Power Voltage (Vmp)	39.90V
Maximum Power Current(Imp)	9.90A
Open Circuit Voltage(Voc)	48.80V±3%
Short Circuit Current(Isc)	10.54A±4%
Maximum System Voltage	1500VDC
Maximum Overcurrent Protection Rating	20A
Power Sorting	0~+3%
Protection Class	II
Fire Class	Type 1(UL61730)/Class C(IEC61730)
Weight	22.5(kg)
Dimension	2008×1002×40(mm)
STC:	1000W/m ² , AM1.5, 25°C
Current Sorting	I1

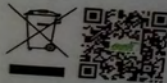
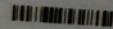


Fire Type: See installation instructions for installation requirement to achieve a specified system fire class rating with this product.
For field connections, use 12 AWG Cu wire only, insulated for a minimum of 90°C.



WARNING

ONLY qualified personnel should install or perform maintenance work on these modules
BE AWARE of dangerous high DC voltage when connecting modules
DO NOT damage or scratch the rear surface of the module
SEE module literature for appropriate mating connectors
DO NOT disconnect the cables or connectors under load



AVERTISSEMENT

SEUL les professionnels peuvent installer et maintenir les éléments
PRENDRE GARDE de la haute tension continue lorsque les éléments sont connectés
IL EST interdit d'endommager ou d'érafler l'envers des éléments
VOIR les infos modules pour les connecteurs de raccordement appropriés
Ne déconnectez pas le câble ou le connecteur sous charge
Pour les raccords sur le terrain, n'utiliser un câble isolé en cuivre de 12 AWG avec un minimum de 90°C.

U1

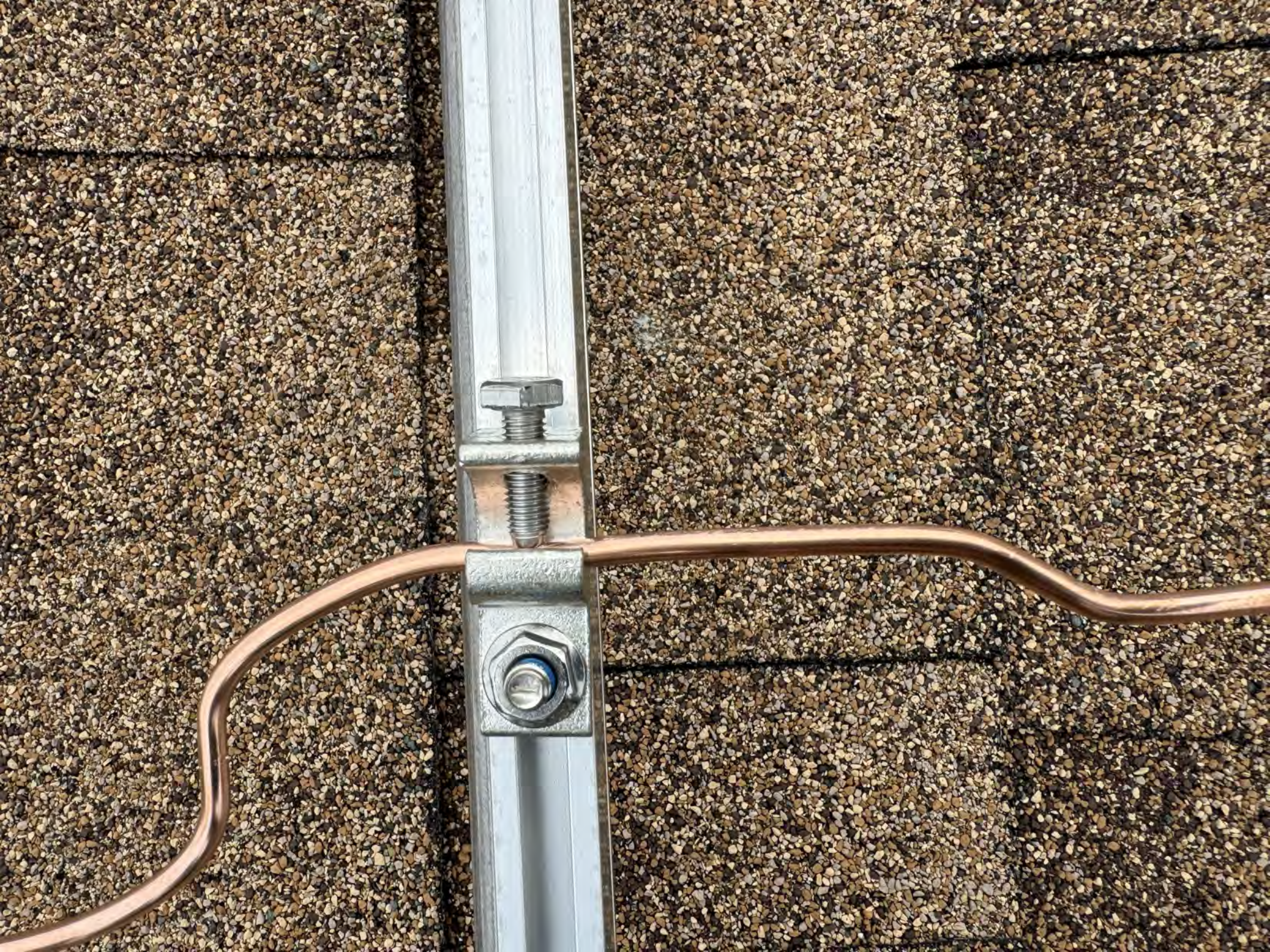


129

Label with technical specifications and safety warnings, including a warning triangle and a CE mark.



Small, illegible label on the white wall.









30 31 32 33 34 35 36 37 38 39 40 41 42 43 44 45 46 47 48 49 50 51



















solar edge
Made in USA

ON
OFF
DC DISCONNECT

WARNING: POWER SOURCE

 **CAUTION** 
SOLAR ELECTRIC SYSTEM CONNECTED



MAIN



WATER PUMP
↓

COND.



Lead
Lag/Alarm

SOLAR PV BREAKER
BREAKER IS BACKFEED
DO NOT RELOCATE



 **CAUTION** 
SOLAR ELECTRIC SYSTEM CONNECTED

**RAPID SHUTDOWN
SWITCH FOR
SOLAR PV SYSTEM**

SOLAR POINT OF INTERCONNECTION

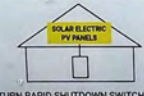
 **WARNING**
DUAL POWER SUPPLY
SOURCES: UTILITY GRID
AND PV SOLAR
ELECTRIC SYSTEM

⚠ WARNING
ELECTRIC SHOCK HAZARD
TERMINALS ON THE LINE AND
LOAD SIDES MAY BE ENERGIZED
IN THE OPEN POSITION

**RAPID SHUTDOWN
SWITCH FOR
SOLAR PV SYSTEM**

ON
Heavy Duty
Safety Switch
60A 240VAC, 250VDC
Horsepower Rated
⚠ DANGER
Turn OFF before working
on the PV system.
Turn OFF before working
on the array.
OFF

**SOLAR PV SYSTEM
EQUIPPED WITH
RAPID SHUTDOWN**



TURN RAPID SHUTDOWN SWITCH TO
THE "OFF" POSITION TO SHUT DOWN
PV SYSTEM AND REDUCE
SHOCK HAZARD IN THE ARRAY

AC DISCONNECT
PHOTOVOLTAIC SYSTEM
POWER SOURCE
RATED AC OUTPUT CURRENT [] AMPS
NOMINAL OPERATING AC VOLTAGE [] VOLTS

⚠ CAUTION ⚠
SOLAR ELECTRIC SYSTEM CONNECTED

**RAPID SHUTDOWN
SWITCH FOR
SOLAR PV SYSTEM**

SOLAR POINT OF INTERCONNECTION

⚠ WARNING
DUAL POWER SUPPLY
SOURCES: UTILITY GRID
AND PV SOLAR
ELECTRIC SYSTEM

CRISTOBAL
FOCUS AXIOM
FORM 25 CLASS 100V 750VA 10
CENTRAL E
166 100 219
WINDING CENTER



CAUTION FOR SOLAR PV SYSTEM
ON
OFF
DO NOT OPEN THIS PANEL WHILE THE SYSTEM IS OPERATING

AS CAUTION AS THIS SWITCHING EQUIPMENT IS USED IN SOLAR PV SYSTEMS







WARNING
Rapid Shutdown
Switch for Solar PV System
ON
OFF
SOLAR PV SYSTEM
EQUIPPED WITH
RAPID SHUTDOWN
AC DISCONNECT
WARNING
Rapid Shutdown
Switch for
Solar PV System
Caution - High Voltage

CAUTION
Rapid Shutdown
Switch for
Solar PV System
Caution - High Voltage

CENTRAL INC.

WARNING
Rapid Shutdown
Switch for
Solar PV System
Caution - High Voltage

WARNING
Rapid Shutdown
Switch for
Solar PV System
Caution - High Voltage



C-1157
57000

WARNING

CAUTION







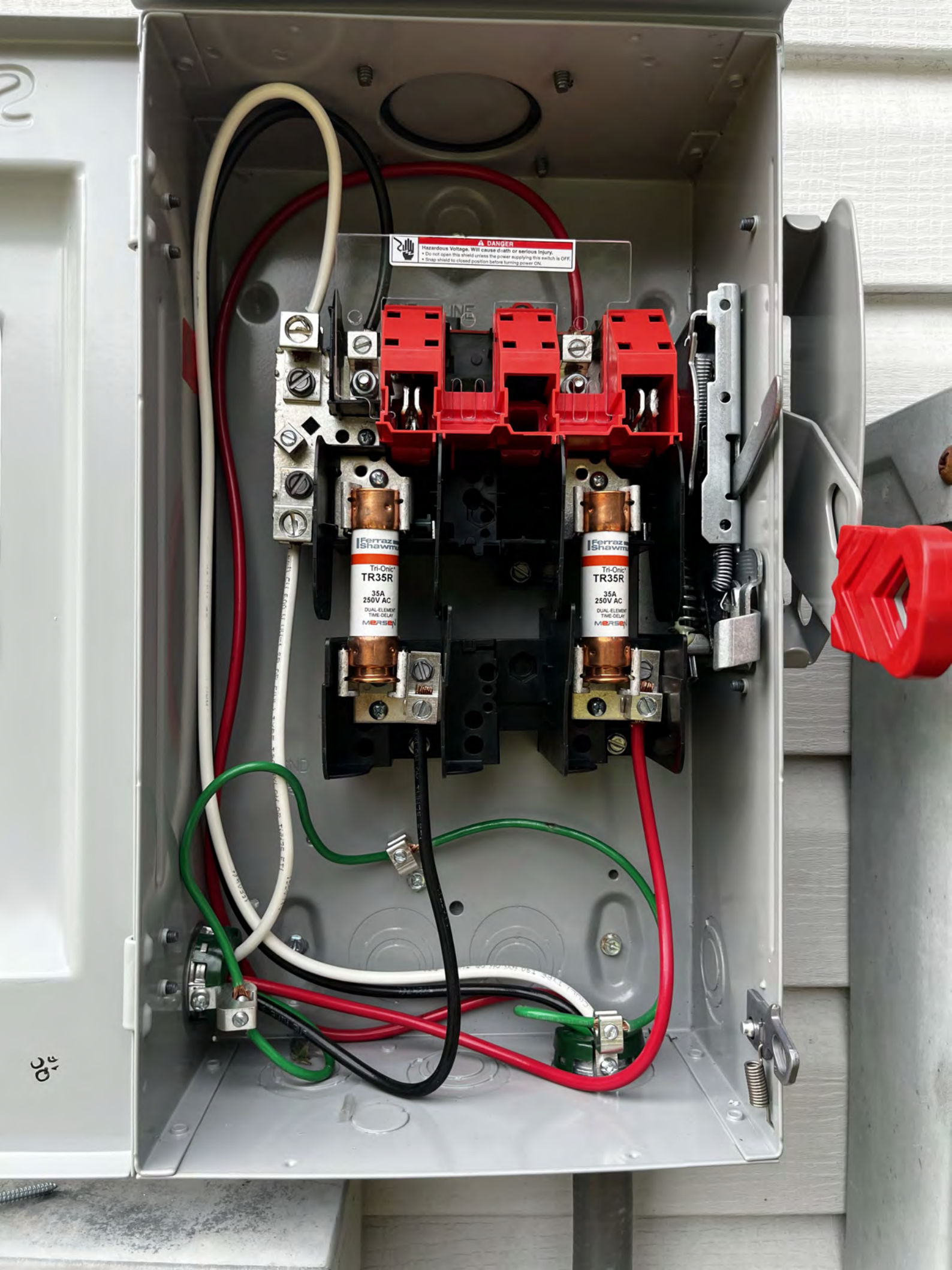
2

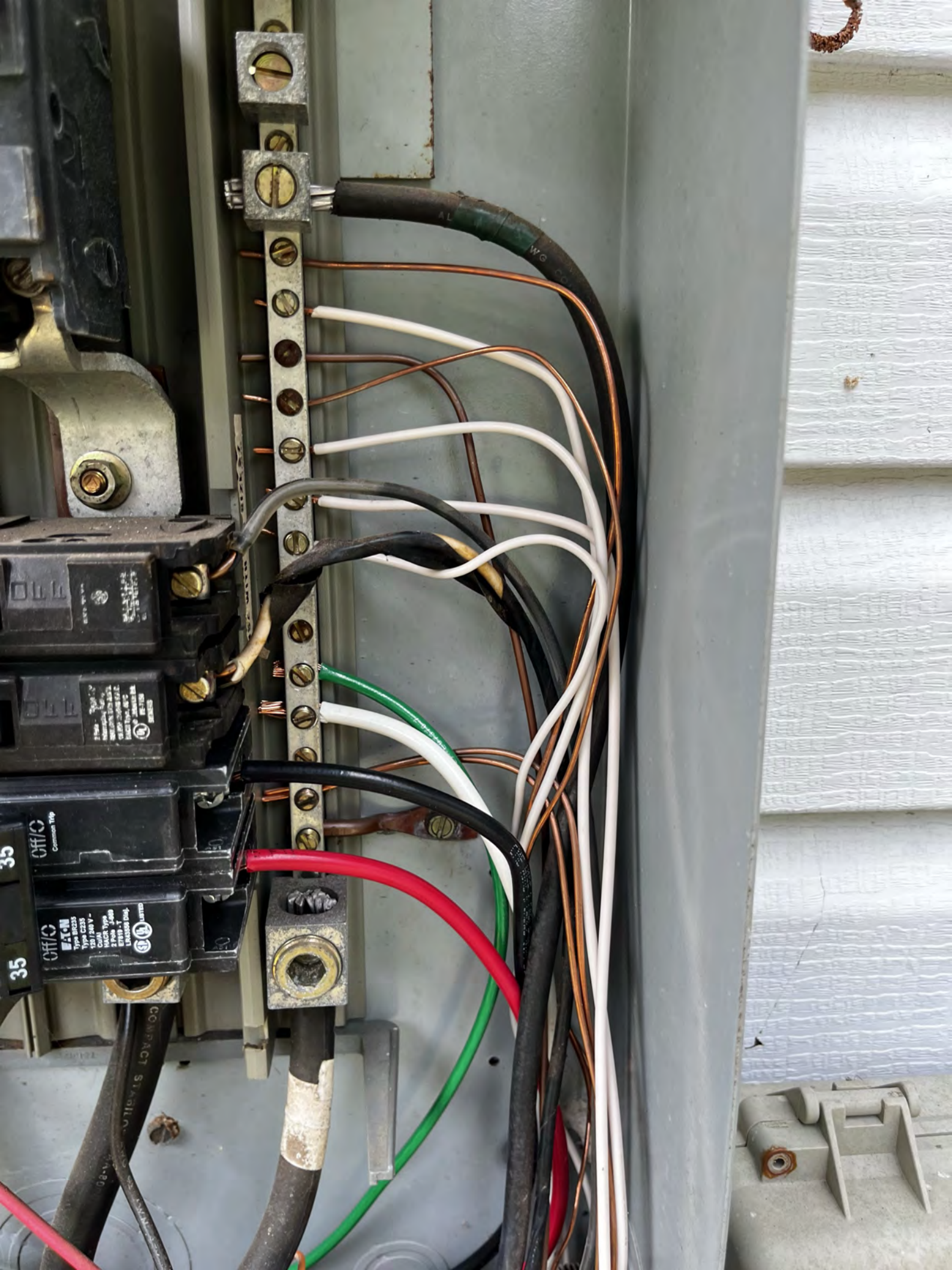
⚠ DANGER
Hazardous Voltage. Will cause death or serious injury.
• Do not open this shield unless the power supplying the switch is OFF.
• Snap shield to closed position before turning power ON.

Ferraz
Shawmut
Tri-Onic
TR35R
35A
250V AC
DUAL ELEMENT
TIME DELAY
MORSE

Ferraz
Shawmut
Tri-Onic
TR35R
35A
250V AC
DUAL ELEMENT
TIME DELAY
MORSE

210

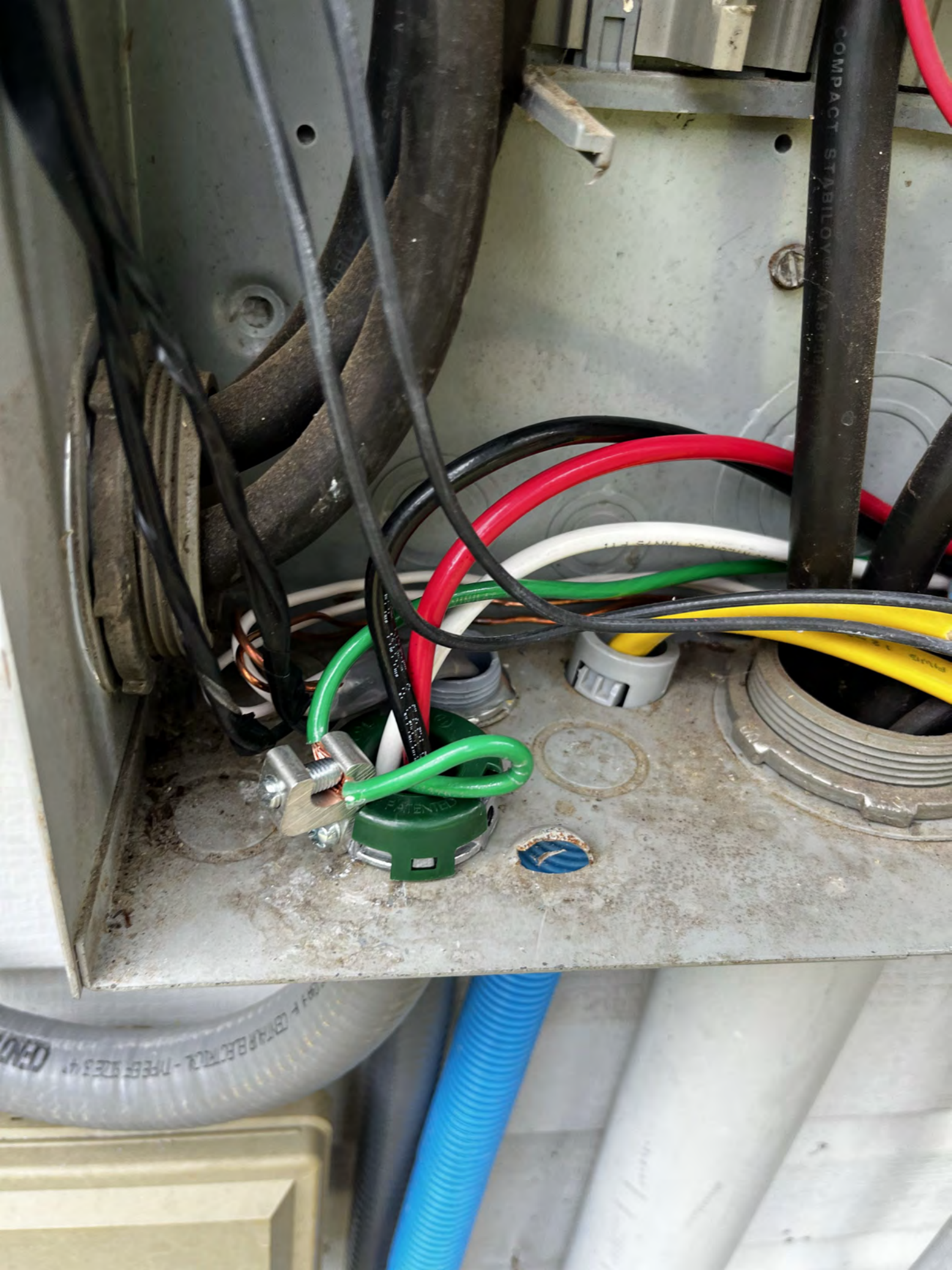


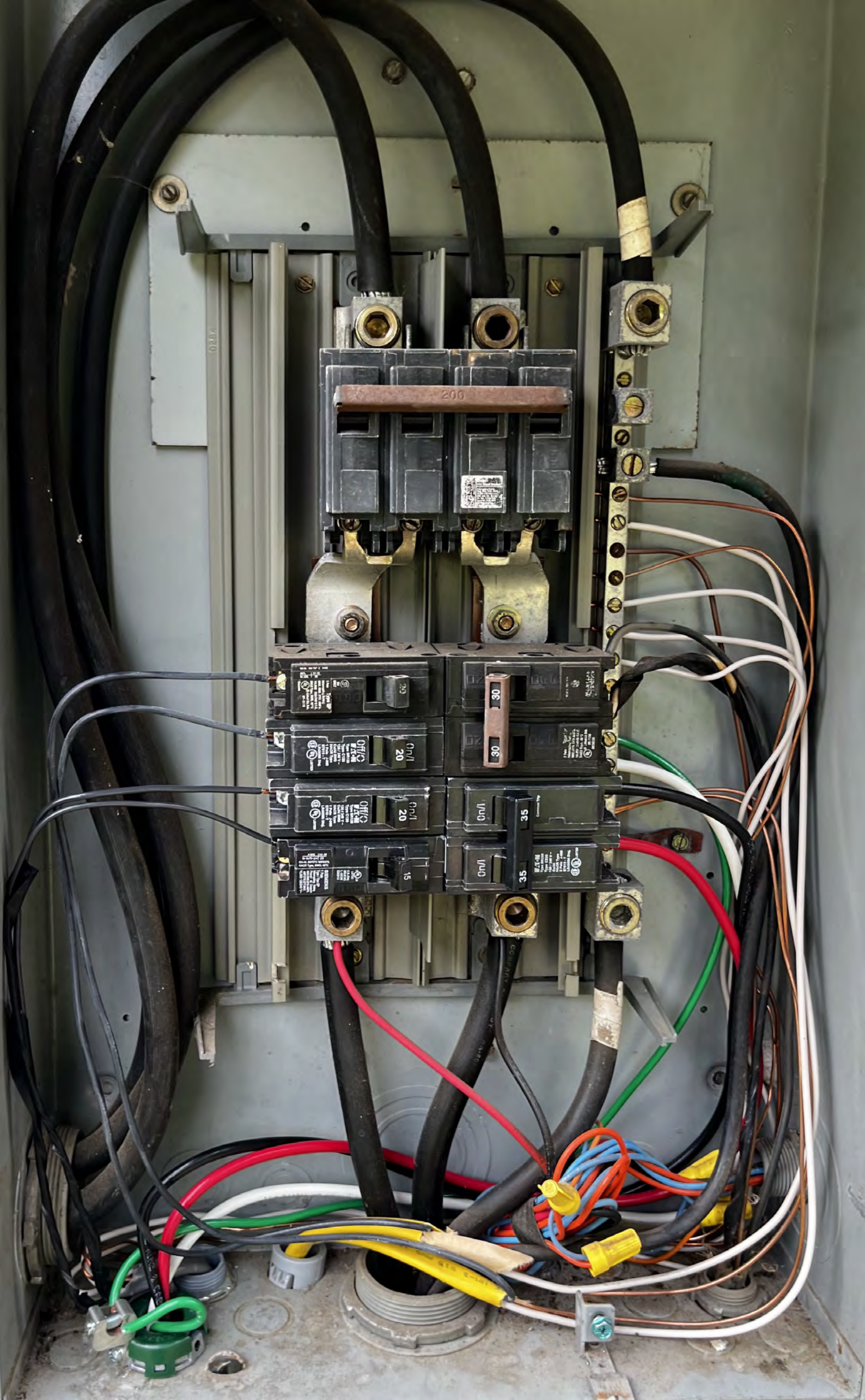


35
OFF/C
Common Trip

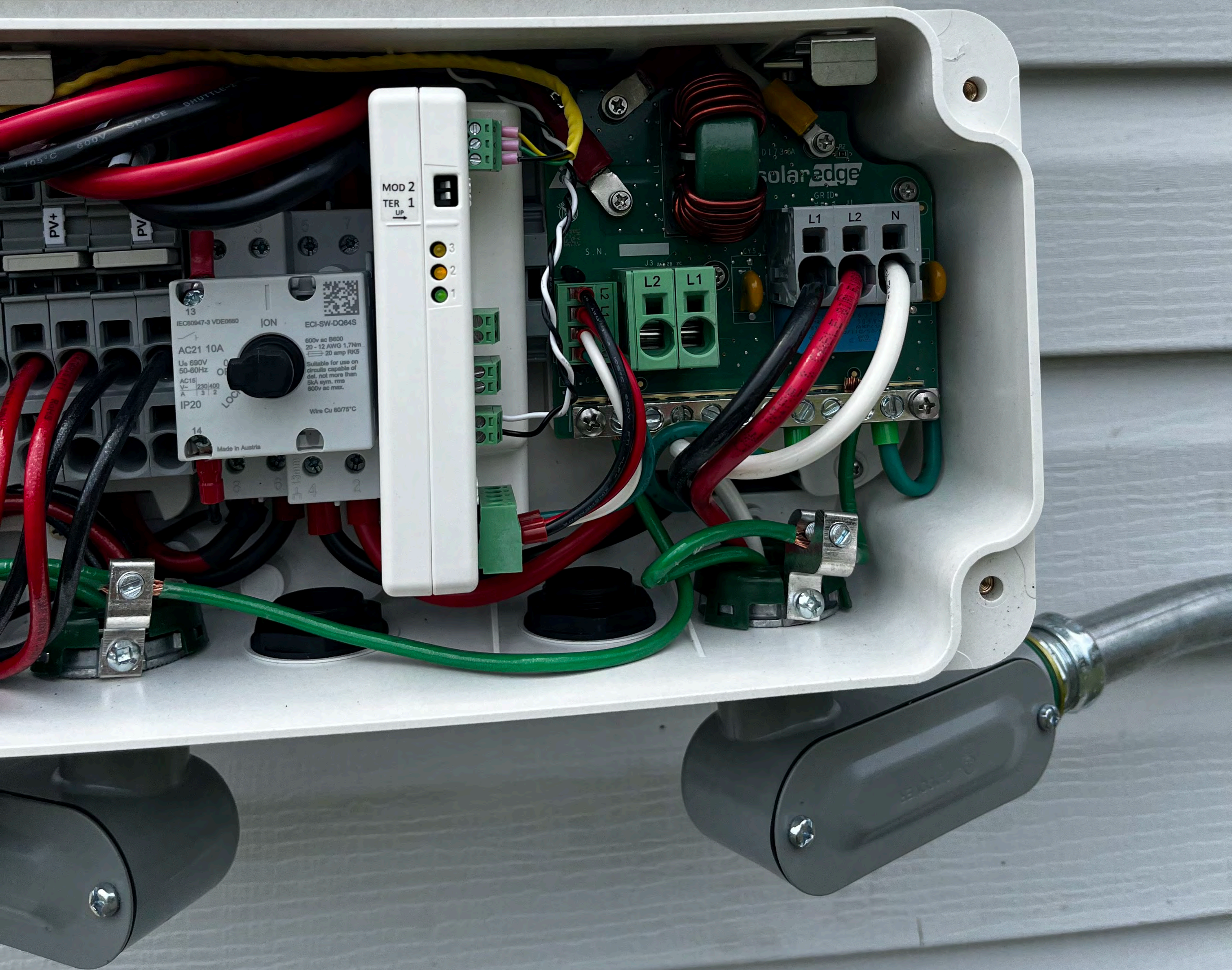
35
OFF/C
Type C235
120/240 V -
CMAA Type
NEMA Type
E1810 - T
LANSING DIV.
Eaton

COMPACT S





Made in USA 
with imported parts



solaredge

Made in USA
from imported parts

