





WARNING- PHOTOVOLTAIC
POWER SOURCE

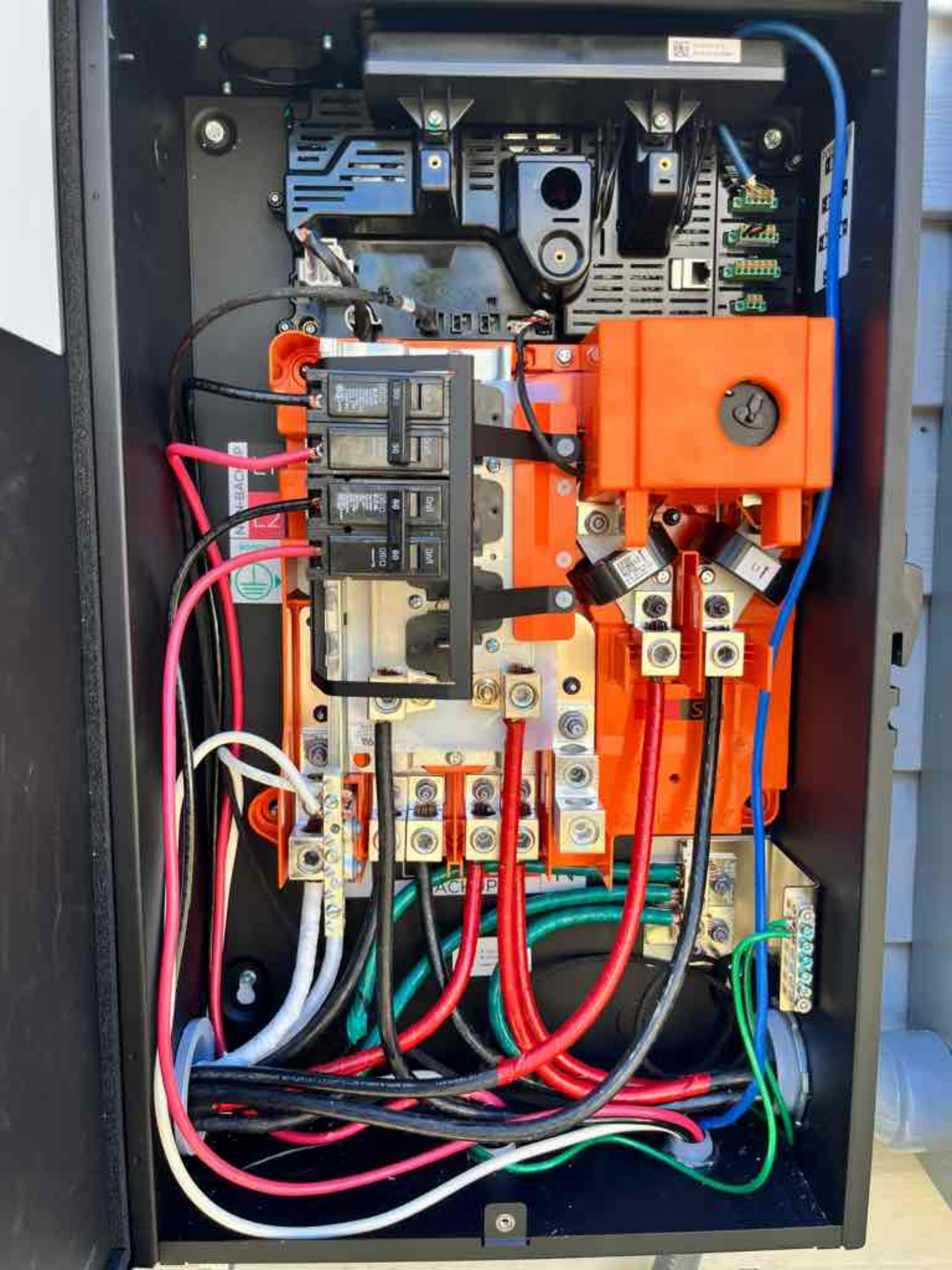


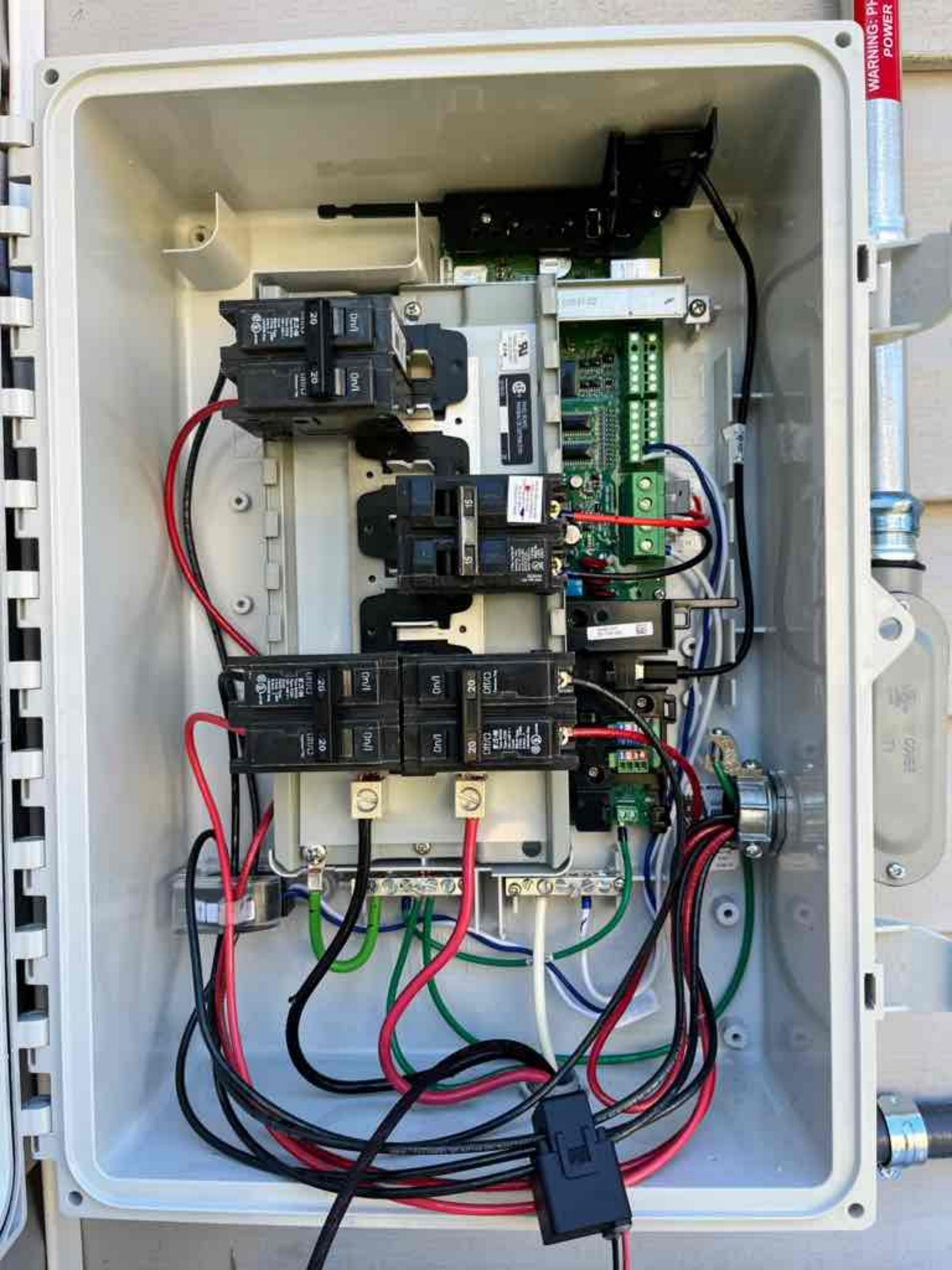
GIDDIS
COVER
11

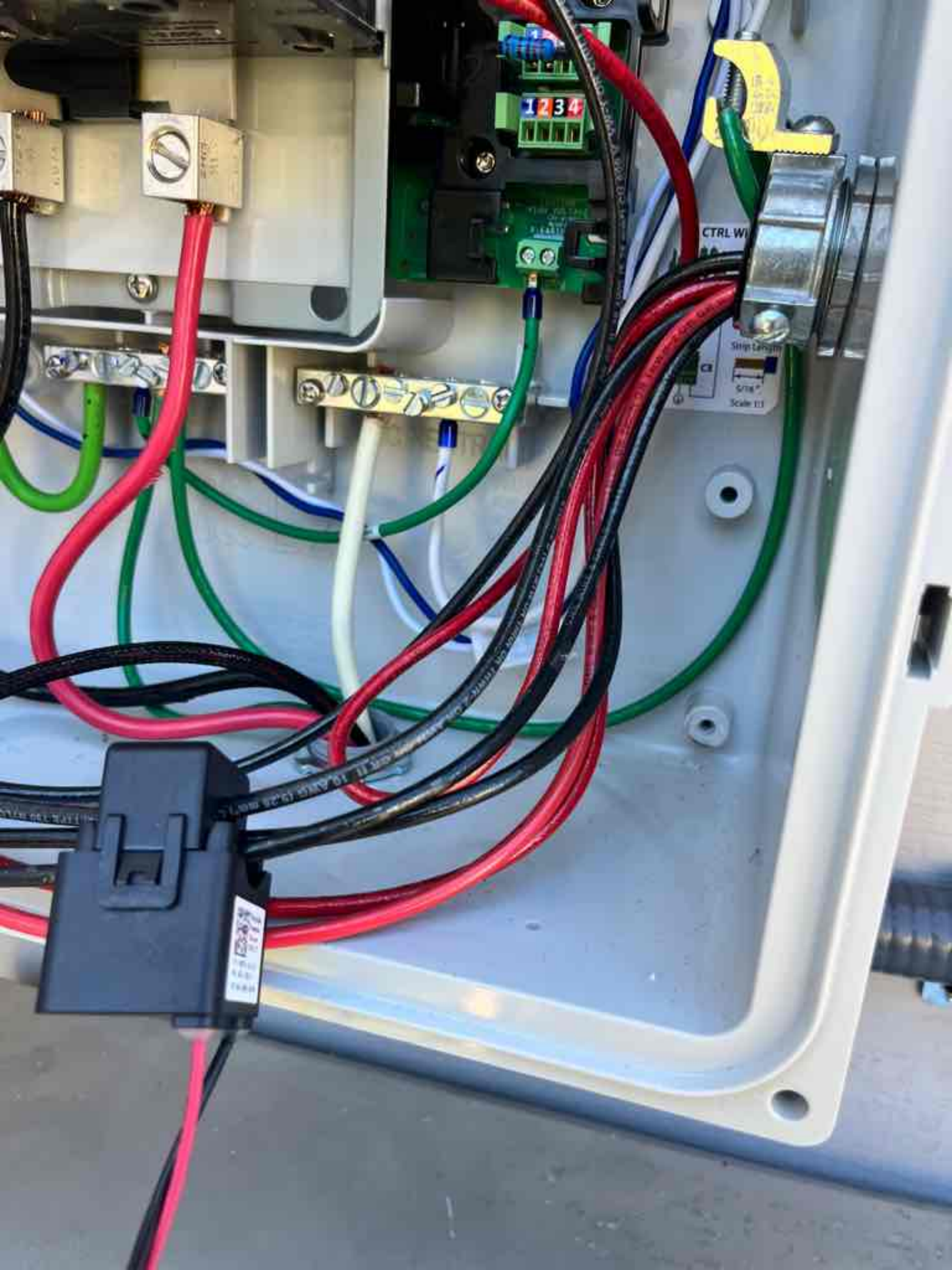


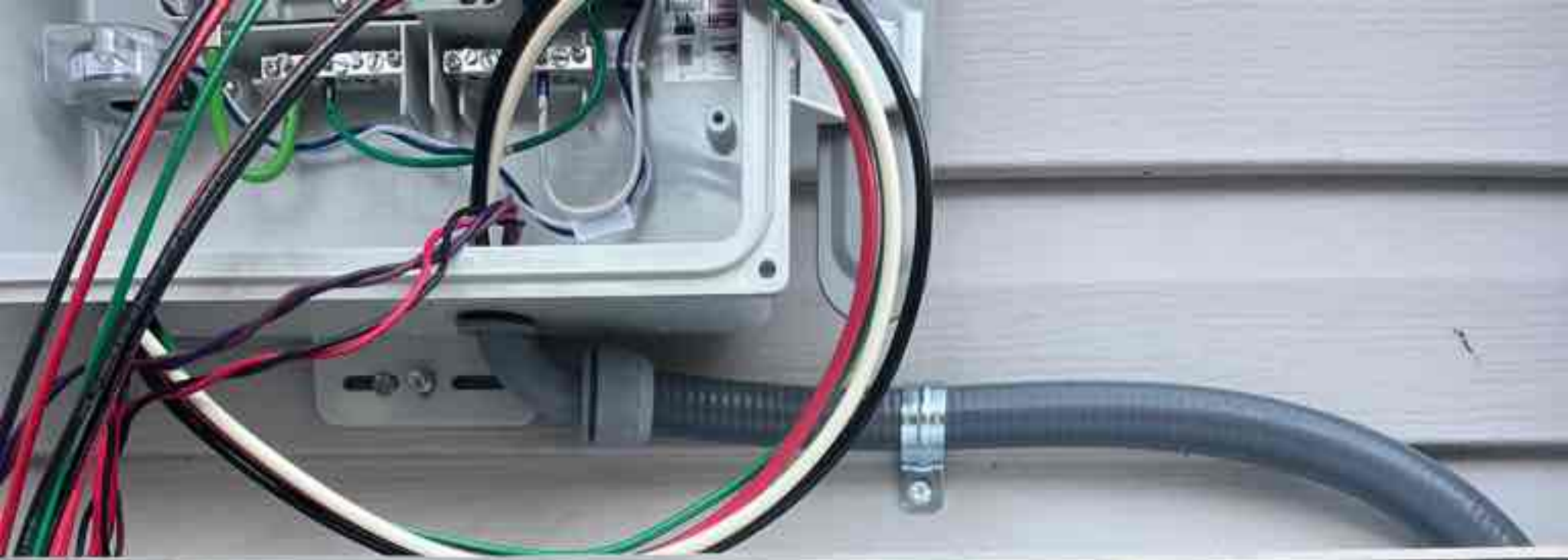
FINISHED
2015

11







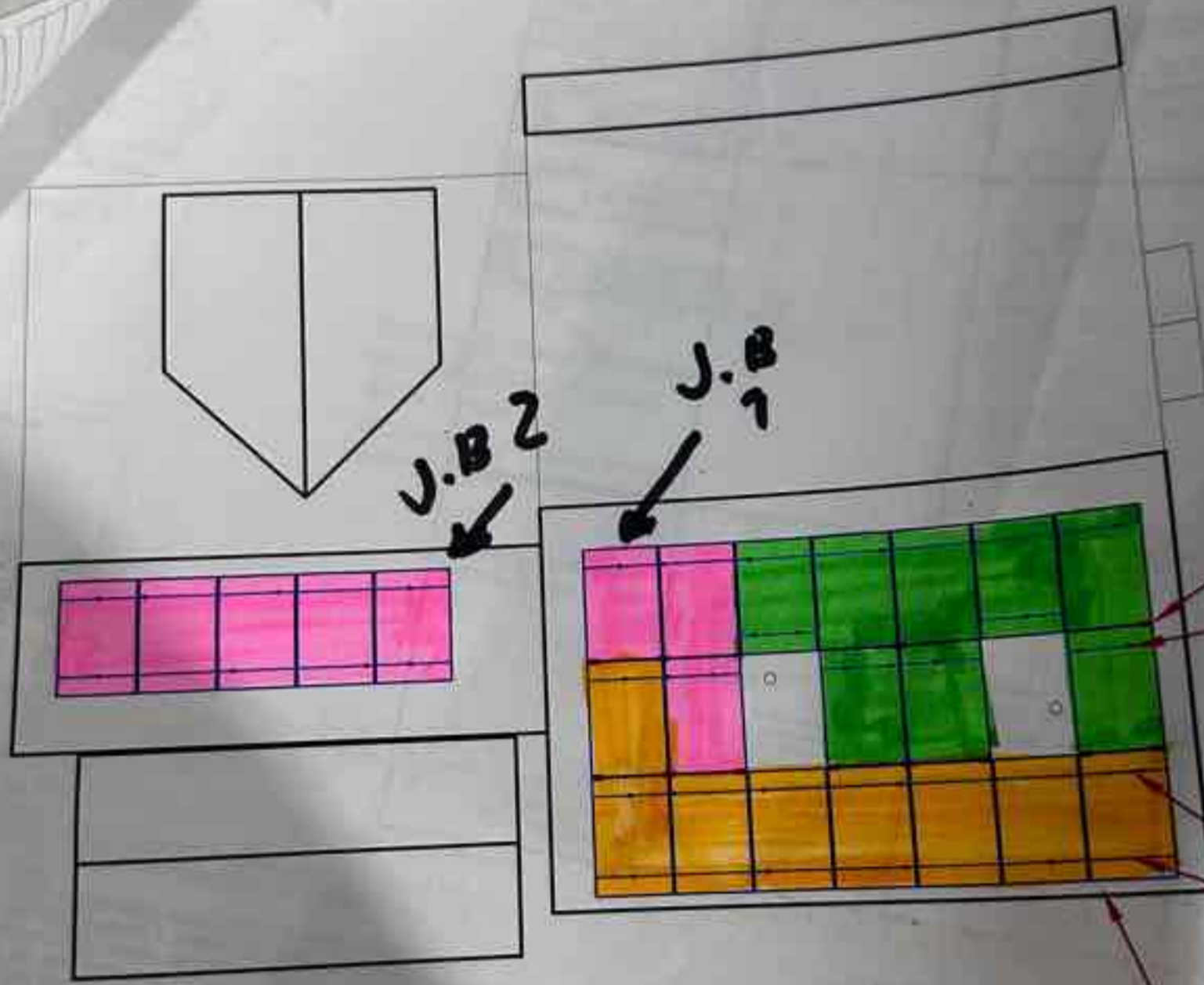






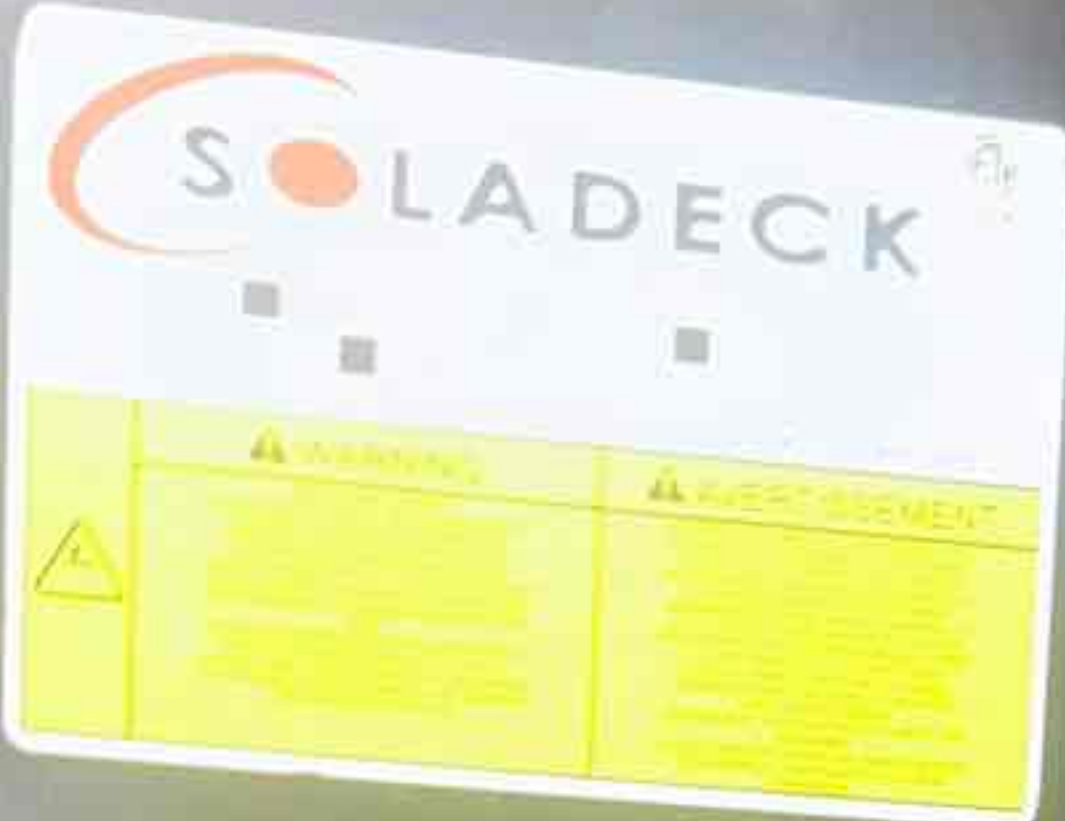


HOUSE WALL)
CONNECT
6" PVC BOX
ATEWAY
ANNEL
ON PANEL
STRODE
ATEWAY
VENUE METER



PE
PEC
5/16
2.5"
AT M
(2
R
EM
FO
2"X4
TRU

ION NOTES
NT SHALL BE INSTALLED IN ACCORDANCE WITH THE
ER'S INSTALLATION INSTRUCTIONS.
EQUIPMENT SHALL BE RAINTIGHT WITH MINIMUM NEMA 3R RATING.
ARE APPROXIMATE AND REQUIRE FIELD VERIFICATION.



42 Oakland Dr Sanford NC 1





SOLADECK

42 Oakland Dr Sanford NC 1

Max Ratings: 600VDC/115 AMPS; 240VAC/60 AMPS, Short circuit 10KA, Ambient Temp 75C

WARNING	AVERTISSEMENT
 DANGER: High Voltage. Do not touch the terminals or internal components. The device is designed for use in a controlled environment. Do not use in a wet or damp environment. Do not use in an explosive atmosphere. Do not use in a confined space. Do not use in a high temperature environment. Do not use in a high vibration environment. Do not use in a high pressure environment. Do not use in a high speed environment. Do not use in a high altitude environment. Do not use in a high humidity environment. Do not use in a high salt environment. Do not use in a high sulfur environment. Do not use in a high ammonia environment. Do not use in a high hydrogen sulfide environment. Do not use in a high carbon dioxide environment. Do not use in a high oxygen environment. Do not use in a high nitrogen environment. Do not use in a high argon environment. Do not use in a high helium environment. Do not use in a high neon environment. Do not use in a high krypton environment. Do not use in a high xenon environment. Do not use in a high radon environment. Do not use in a high uranium environment. Do not use in a high plutonium environment. Do not use in a high americium environment. Do not use in a high curium environment. Do not use in a high berkelium environment. Do not use in a high californium environment. Do not use in a high einsteinium environment. Do not use in a high fermium environment. Do not use in a high mendelevium environment. Do not use in a high nobelium environment. Do not use in a high lawrencium environment. Do not use in a high rutherfordium environment. Do not use in a high dubnium environment. Do not use in a high seaborgium environment. Do not use in a high bohrium environment. Do not use in a high hassium environment. Do not use in a high meitnerium environment. Do not use in a high darmstadtium environment. Do not use in a high roentgenium environment. Do not use in a high copernicium environment. Do not use in a high nihonium environment. Do not use in a high flerovium environment. Do not use in a high oganesson environment.	

42 Oakland Dr Sanford NC 2



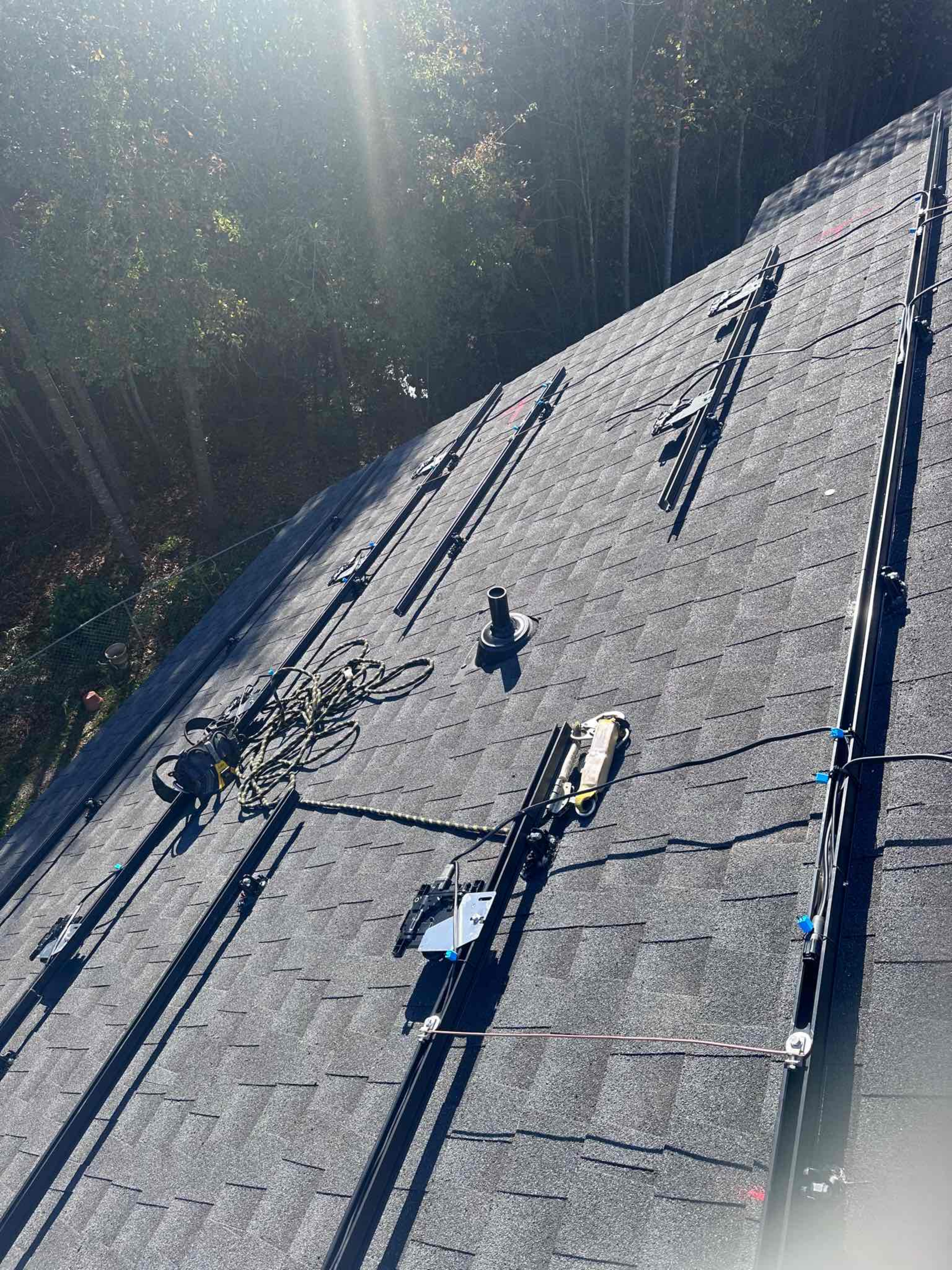








































42 Oakland Dr Sanford NC 2

WARNING
Avertissement















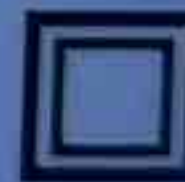


Serial No. **M230204-B0156**



Model Number	MSE395SX9R	
Rated Maximum Power	[W] 395 (-0/+3%)	
Open – Circuit Voltage	[V] 45.2	
Voltage at Pmax	[V] 37.0	
Short – Circuit Current	[A] 11.24	
Current at Pmax	[A] 10.68	
Max. System Voltage	[V] 1000	
Max. Series overcurrent protective device (where required) fuse rating	[A] 20	
Standard test condition	AM=1.5 E=1000W/m ² Tc=25°C	

For field connections, use Cu only, 12AWF (US, CANADA), 4mm² (EU, Asia) wires insulated for a minimum of 90°C, rated for wet conditions and resistant to ultra violet radiation (where exposed). See installation manual for PV connector details and compatibility. Avertissement Risque de choc électrique. Ce module produit des tensions élevées dans la lumière du soleil. Risque électrique peut choquer, brûler ou de provoquer la mort. Ne pas toucher la borne.



Fire Rating : Type 1
 Class of Equipment: Class II
 Design Load: Minimum 3600 Pa front and minimum 1600 Pa back load

Warning
 PV modules generate voltage even with very weak light. Do not open the junction box. Les modules PV produisent tension même en basse lumière. Ne pas ouvrir la boîte de jonction.



Buy American Act & the American Recovery and Reinvestment Act



Address:
 8303 S. New Braunfels Ave.
 San Antonio, TX 78235

ASSEMBLED IN THE USA



SOLADECK
WARRANTY
42 Oakland Dr Sanford NC 2

42 Oakland Dr Sanford NC 2











M18 REDLITHIUM XC6

840-00387-15
250VAC 20A
+79°C 2310

166







