













Total device count: 15	Loading...	Edit device count
<hr/>		
IQ Gateway		>
✓ 202308151449		
<hr/>		
IQ Microinverters & Array		>
✓ Scanned		14/14
✓ Detected		14/14
✓ Communicating		14/14
✓ Array created		1
✓ Producing power		14/14
✓ Profile set		14/14

Raleigh Crew 2
Patrick Reaves

Synced

Status **New**

Roofing

Roof

Inspection

Roof Leak Prevention

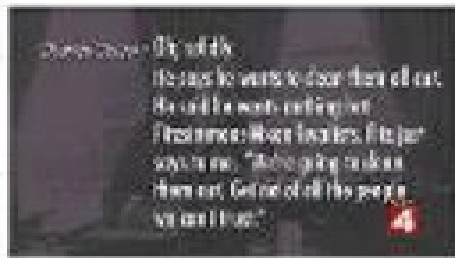
Attic

Trenching

Electrical

Commissioning

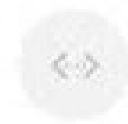
Completion



Connect gateway to Enphase cloud via:



Wi-Fi
FTK



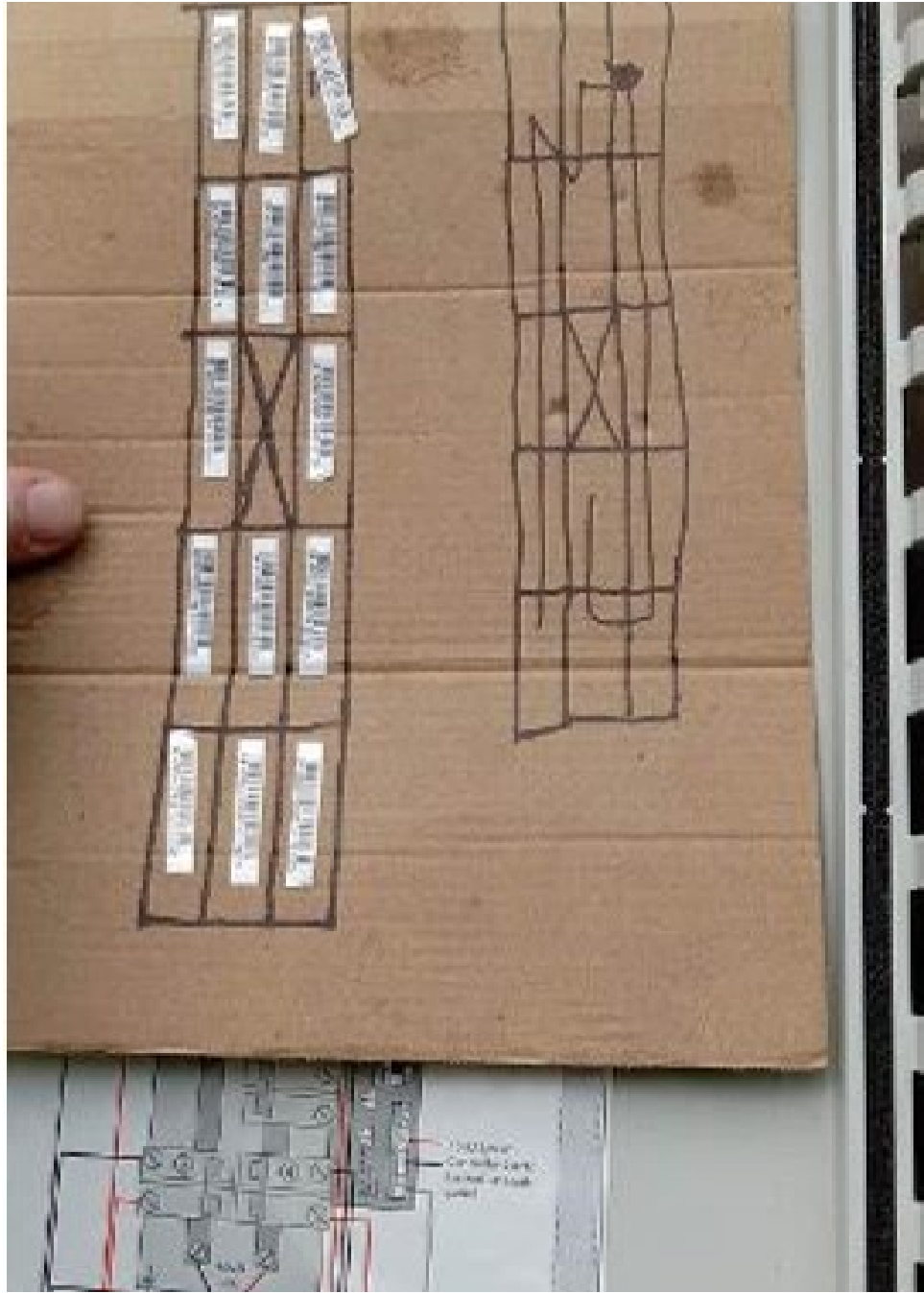
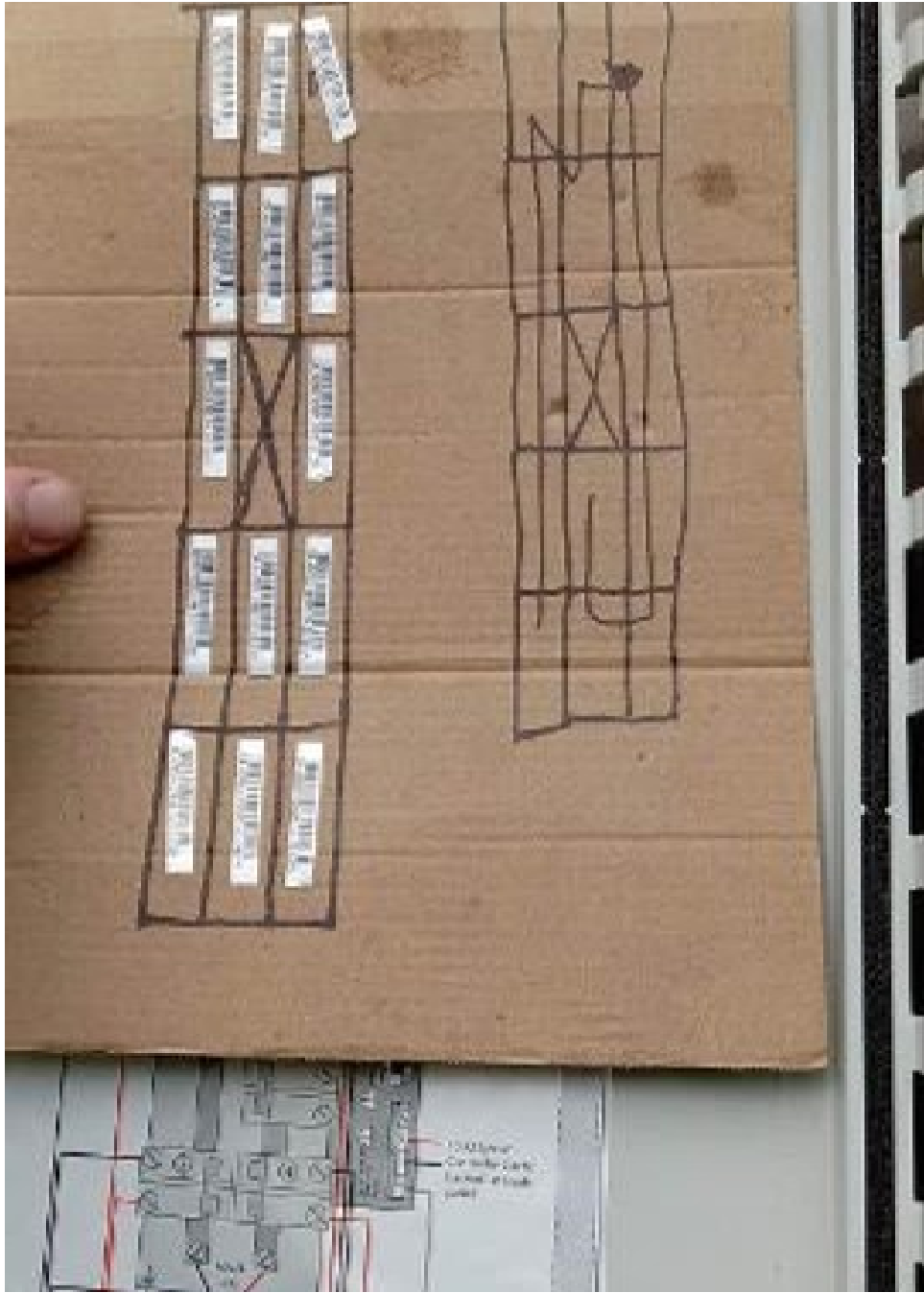
Ethernet



Cellular

Disconnect from IQ Gateway







IEEE1547:2018 COMPLIANT



Electrical ratings

Voltage 240VAC, 60Hz
 DG Breakers 80A MAX (combined)
 DG Inputs 64A MAX (combined)
 Output 65A MAX, 90A MAX feeder DCPD
 Temperature 46°C MAX ambient

For DG breaker, use only Eaton BR series.

202308151449

P/N:

S/N:

202308151449

883-00353 13 8431

Dedicated solar and DG Combiner Box - do not add loads.
 10 AMP or 15 AMP IQ Gateway Breaker not used for backfeed.

Connection	Wire sizes	Torque
DG Breaker (1, 2, 3, 4)	14-10 AWG	2.2 Nm (20 lb-in)
	8 AWG	2.8 Nm (25 lb-in)
	6-4 AWG	3.0 Nm (27 lb-in)
80A Circuit Breaker only	4-1/0 AWG	5.0 Nm (45 lb-in)
IQ Gateway Breaker	14-10 AWG	2.25 Nm (20 lb-in)
Neutral and ground	Large screw	
	2-1/0 AWG	5.6 Nm (45 lb-in)
	1-3 AWG	5.1 Nm (45 lb-in)
Small screw	6 AWG	3.6 Nm (32 lb-in)
	8 AWG	2.6 Nm (23 lb-in)
	10-14 AWG	2.3 Nm (20 lb-in)
Main lug	10-4 AWG	5.0 Nm (45 lb-in)
	3-2/0 AWG	5.6 Nm (50 lb-in)

Copper conductors only, rated min. 75°C.
 Follow NFPA 70 (NEC), or CSA C22.1 part 1, and all local codes.

For DG Breakers larger than 20A, use wire insulated for 90°C.
 Based on 75°C ampacity.

Designed in California and New Zealand.
 Made in Mexico.

Combiner Box
 X2-IQ-AM1-240-4
 IEEE1547:2018 COMPLIANT



Electrical ratings

Voltage 240VAC, 60Hz
 DG Breaker 80A MAX (combined)
 DG Inputs 64A MAX (combined)
 Output 65A MAX, 90A MAX feeder DCPD
 Temperature 46°C MAX ambient

For DG breaker, use only Eaton BR series.

202308151449

P/N:

S/N:

202308151449

883-00353 13 8431

Dedicated solar and DG Combiner Box - do not add loads.
 10 AMP or 15 AMP IQ Gateway Breaker not used for backfeed.

Connection	Wire sizes	Torque
DG Breaker (1, 2, 3, 4)	14-10 AWG	2.2 Nm (20 lb-in)
	8 AWG	2.8 Nm (25 lb-in)
	6-4 AWG	3.0 Nm (27 lb-in)
80A Circuit Breaker only	4-1/0 AWG	5.0 Nm (45 lb-in)
IQ Gateway Breaker	14-10 AWG	2.25 Nm (20 lb-in)
Neutral and ground	Large screw	
	2-1/0 AWG	5.6 Nm (45 lb-in)
	1-3 AWG	5.1 Nm (45 lb-in)
Small screw	6 AWG	3.6 Nm (32 lb-in)
	8 AWG	2.6 Nm (23 lb-in)
	10-14 AWG	2.3 Nm (20 lb-in)
Main lug	10-4 AWG	5.0 Nm (45 lb-in)
	3-2/0 AWG	5.6 Nm (50 lb-in)

Copper conductors only, rated min. 75°C.
 Follow NFPA 70 (NEC), or CSA C22.1 part 1, and all local codes.

For DG Breakers larger than 20A, use wire insulated for 90°C.
 based on 75°C ampacity.

Designed in California and New Zealand.
 Made in Mexico.

