


























 **UNIRAC**TM
BETTER SOLAR STARTS HERE



SFM SPLICE 6.5

California Proposition 65  WARNING: Cancer &
Reproductive Harm www.P65Warnings.ca.gov



8

10059

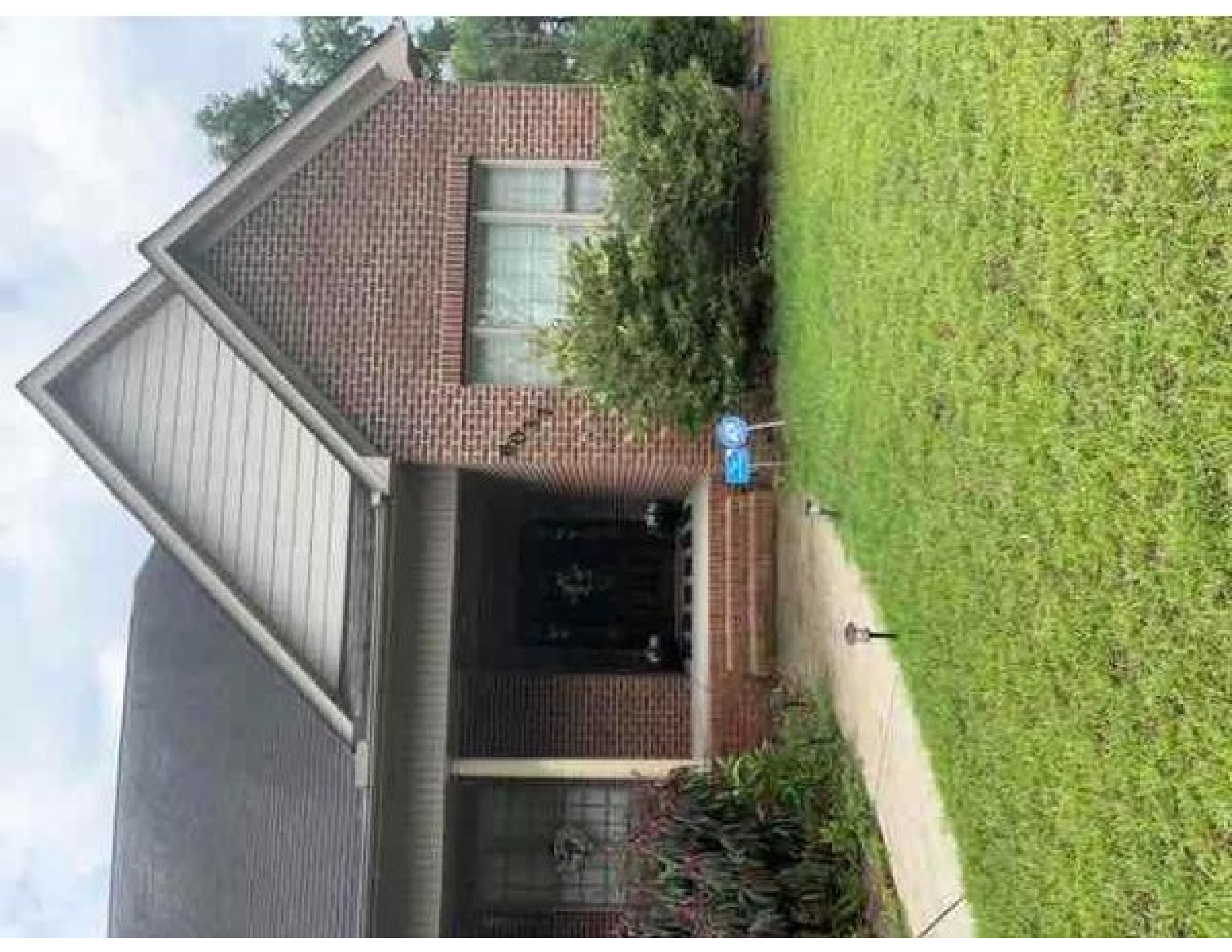
MANUFACTURE DATE: 2023

98 400 07 1046942-00

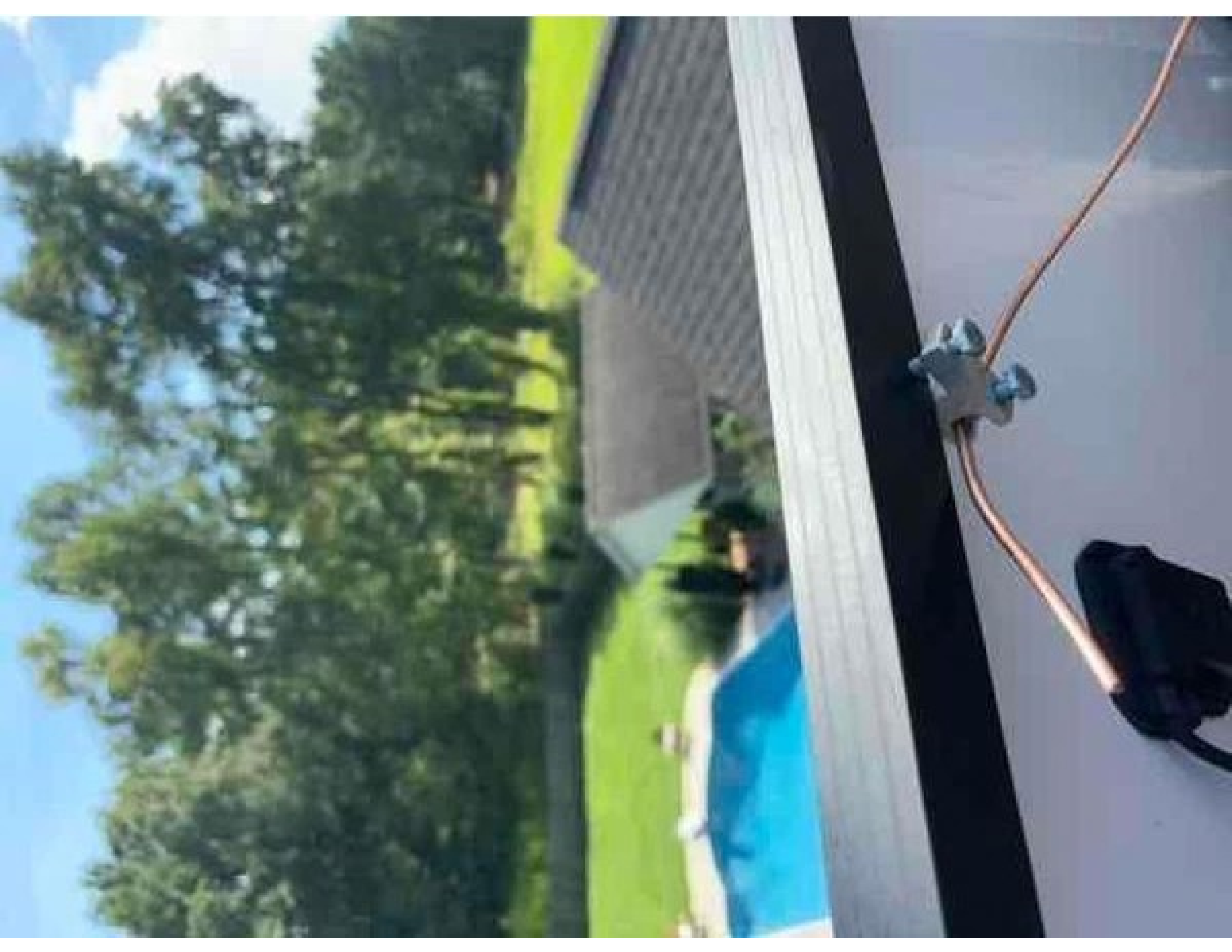
of 10 EA

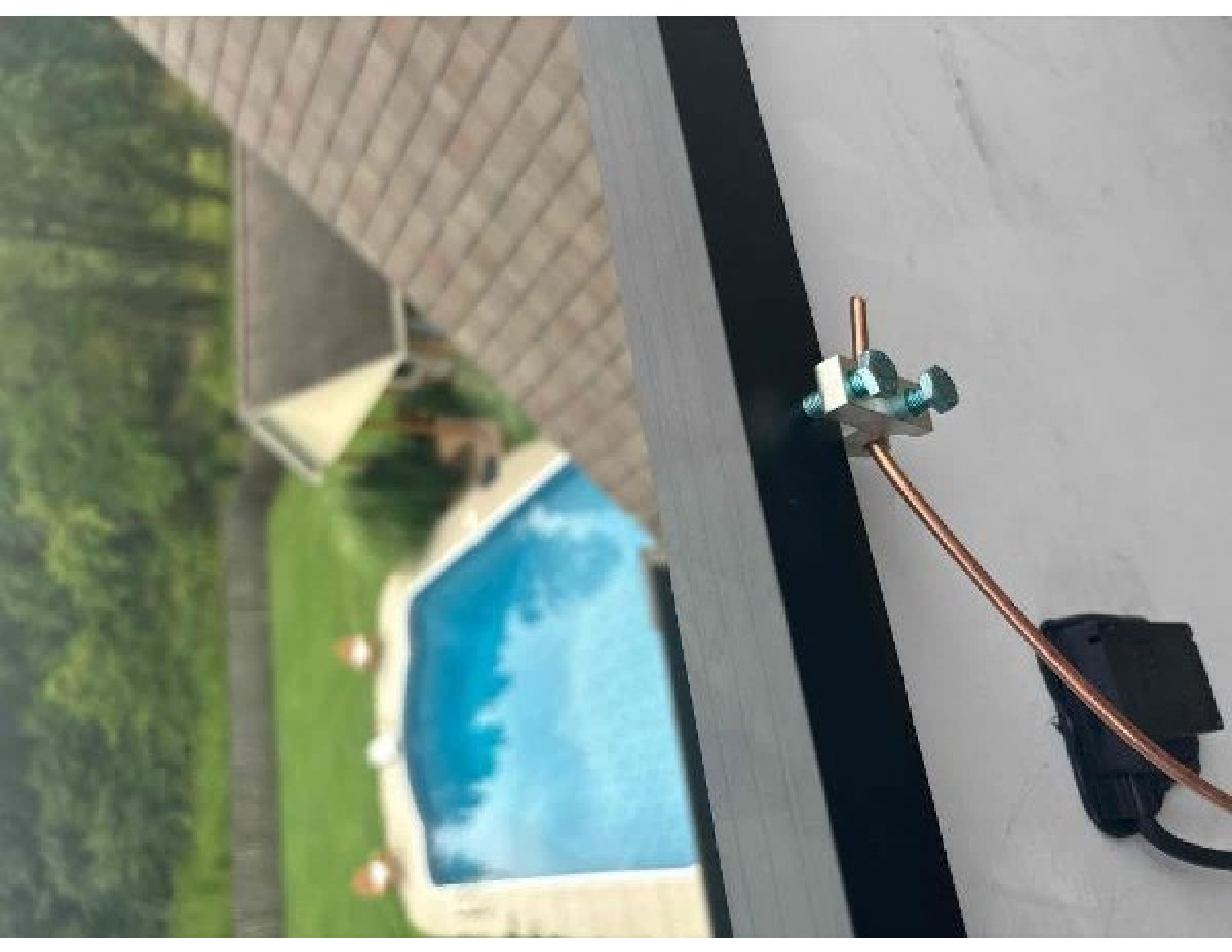


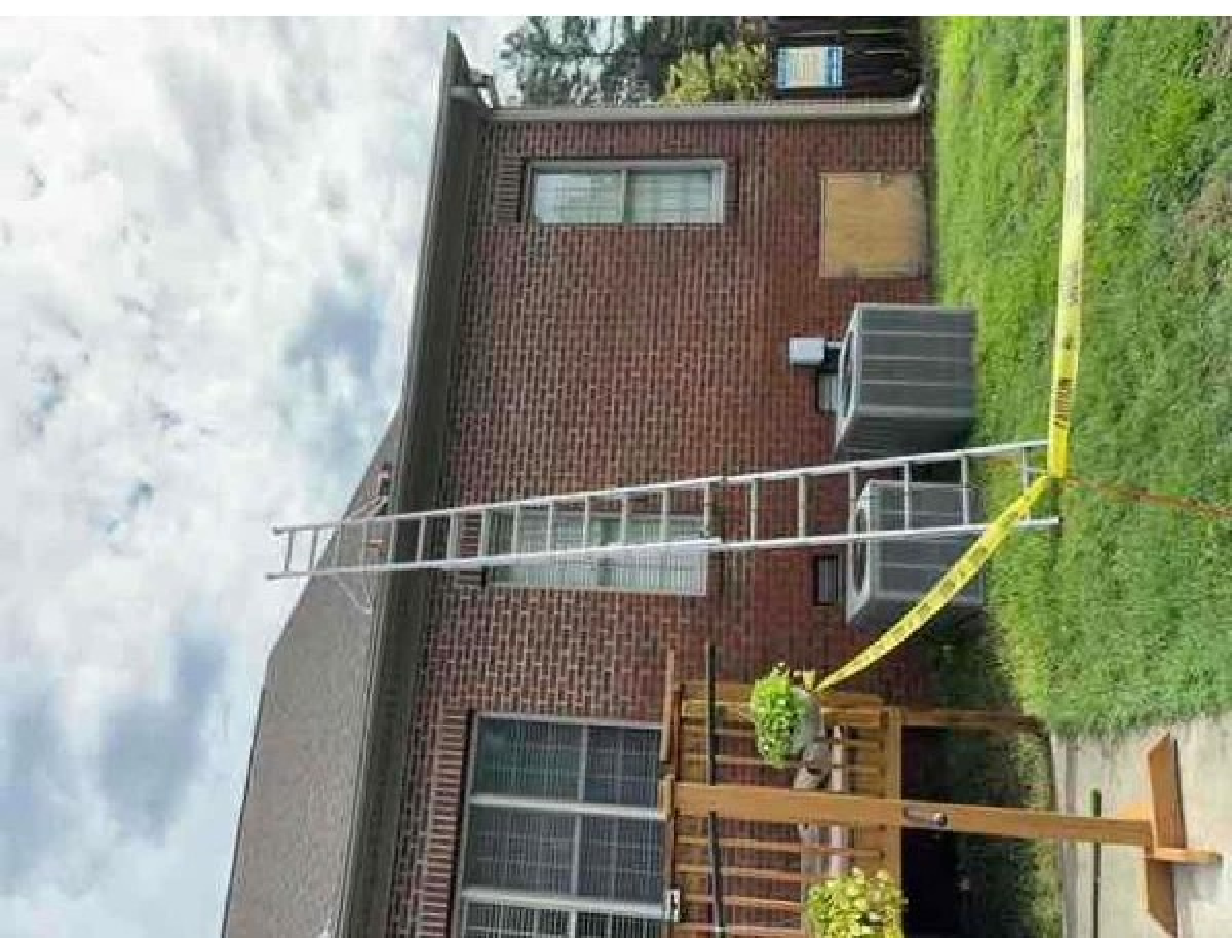
250010U

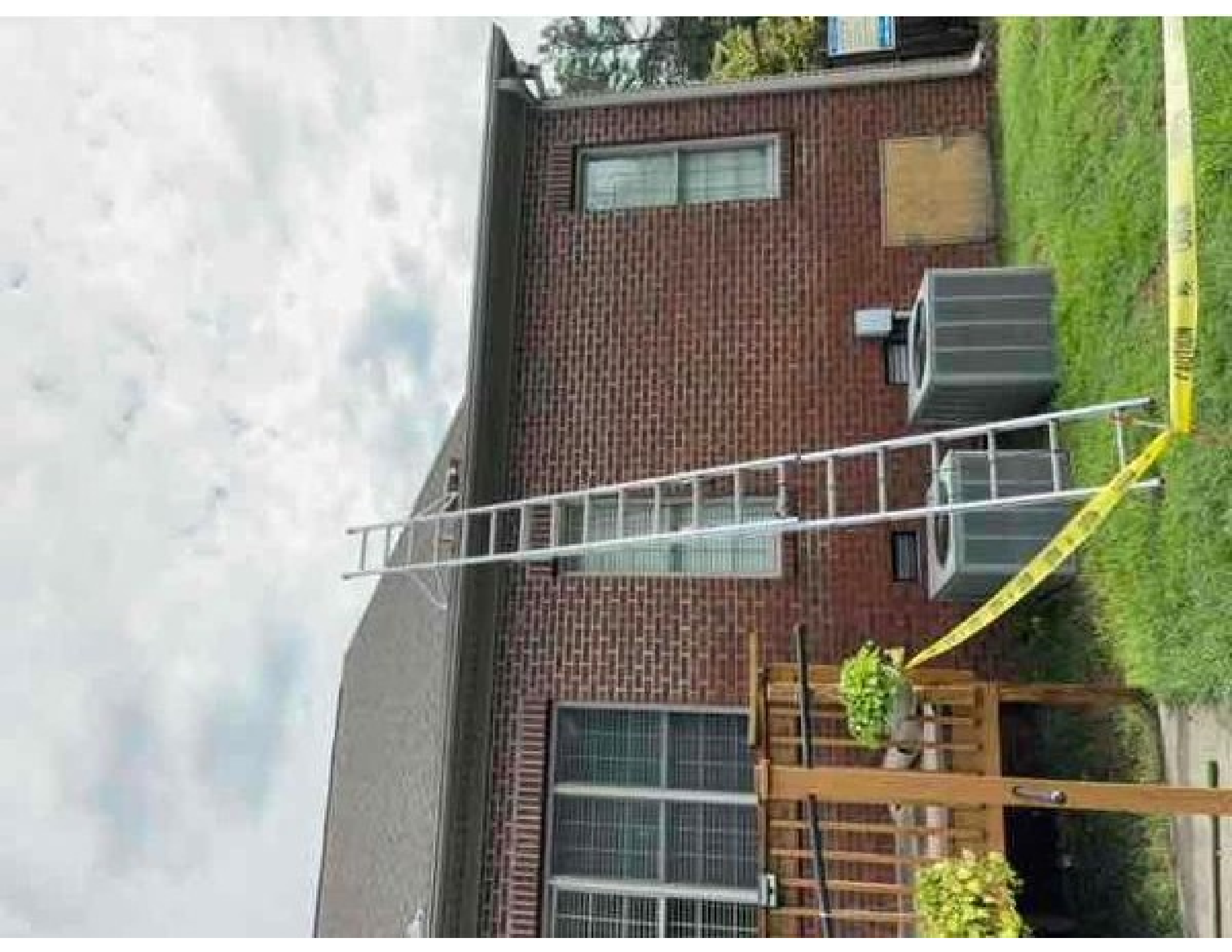










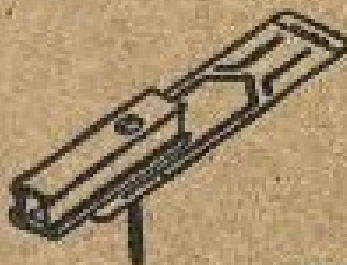




FLASHKIT SFM SLIDER S

004271D

FLASHKIT SFM SLIDER S COMPDRK
DARK Pack Size : 10
Factory Code: 5-4



WO/PO# 0046801-00 Manufacture date: 2/20/23-3/20/23 8 10039 36213 1















IQ Combiner 4

Photovoltaic
Combiner Box

X2-IQ-AM1-240-4

IEEE 1547:2018 COMPLIANT

Electrical ratings

Voltage 240VAC, 60Hz
 DG Breakers 80A MAX (combined)
 DG Inputs 64A MAX (combined)
 Output 65A MAX, 96A MAX feeder OCPD
 Temperature 40 °C MAX ambient
 For DG breaker, use only Eaton BR series.



202308193338

202308193338

P/N:

883-00353 13 8431

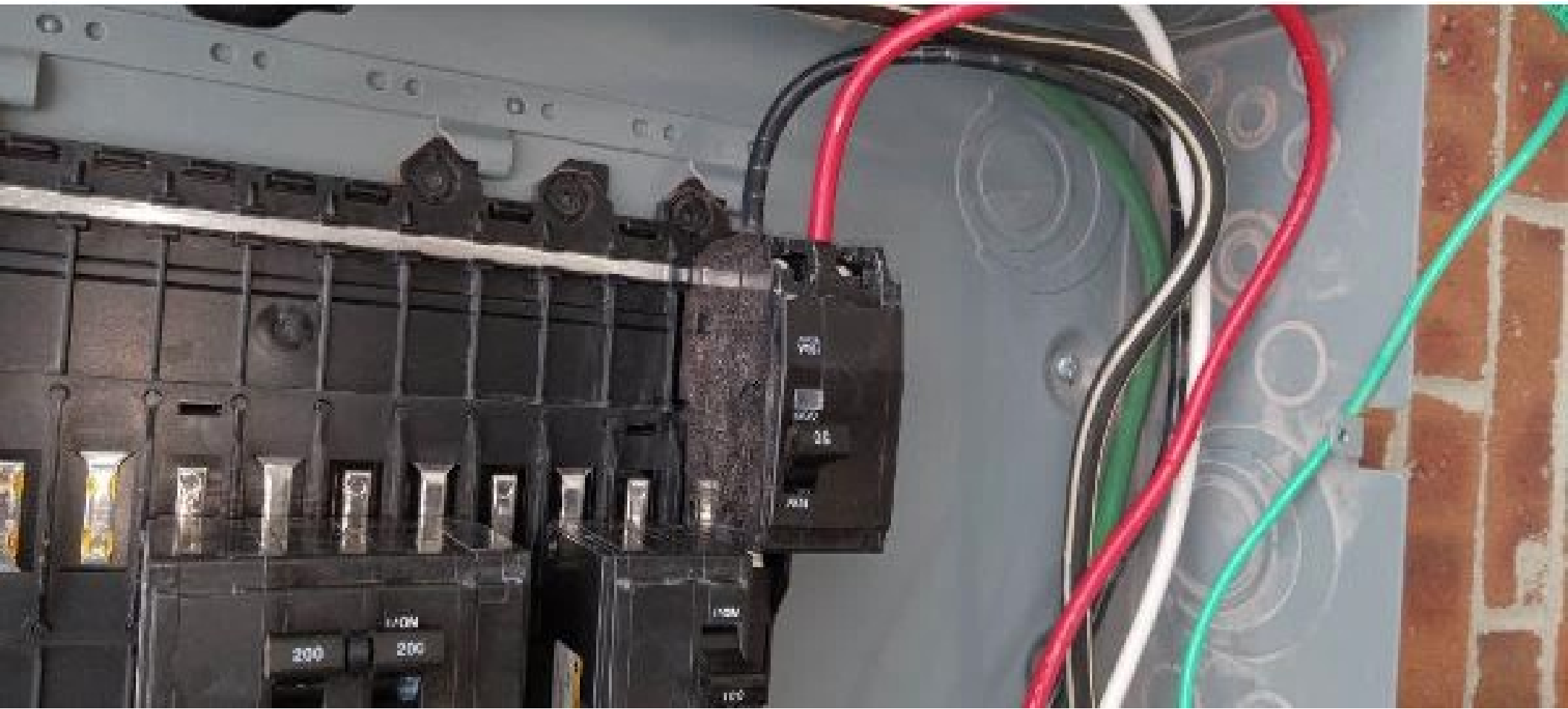
*Dedicated sole and DG Combiner Box - do not add loads
 0-AMP or 15 AMP IQ Gateway Breaker not used for backfeed*

Connection

Connection	Wire Sizes	Torque
DG Breaker (2, 3, 4)	14-10 AWG 8 AWG	2.2 Nm (20 lb-in) 2.8 Nm (25 lb-in)
	6-4 AWG	3.0 Nm (27 lb-in)
A Circuit Breaker only	4-100 AWG	5.0 Nm (45 lb-in)
	14-10 AWG	2.26 Nm (20 lb-in)
Terminal and ground	Large screw	5.6 Nm (45 lb-in)
	Small screw	5.1 Nm (45 lb-in)
Bus	6 AWG	3.6 Nm (32 lb-in)
	8 AWG	2.8 Nm (23 lb-in)
	10-14 AWG	2.3 Nm (20 lb-in)
Neutral and ground	10-4 AWG	5.0 Nm (45 lb-in)
	3-20 AWG	5.6 Nm (50 lb-in)

For conductors only, rated min. 75°C,
 75°F (90°C, 194°F), or CSA C22.1 part 1, and all local codes.
 For breakers larger than 20A, use wire insulated for 90°C
 on 75°C ampacities.

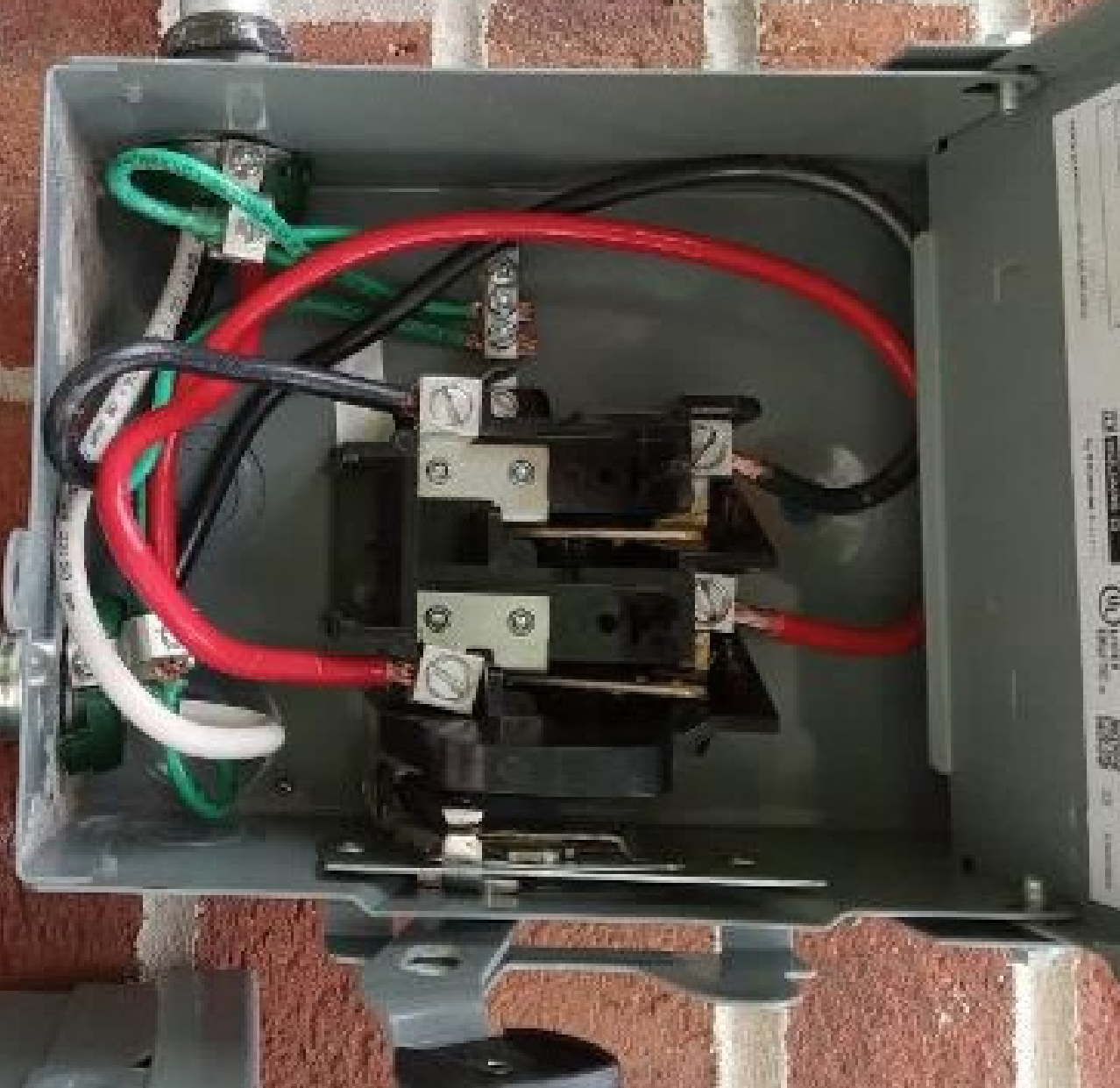
Approved for use in California and New Zealand
 and Mexico.

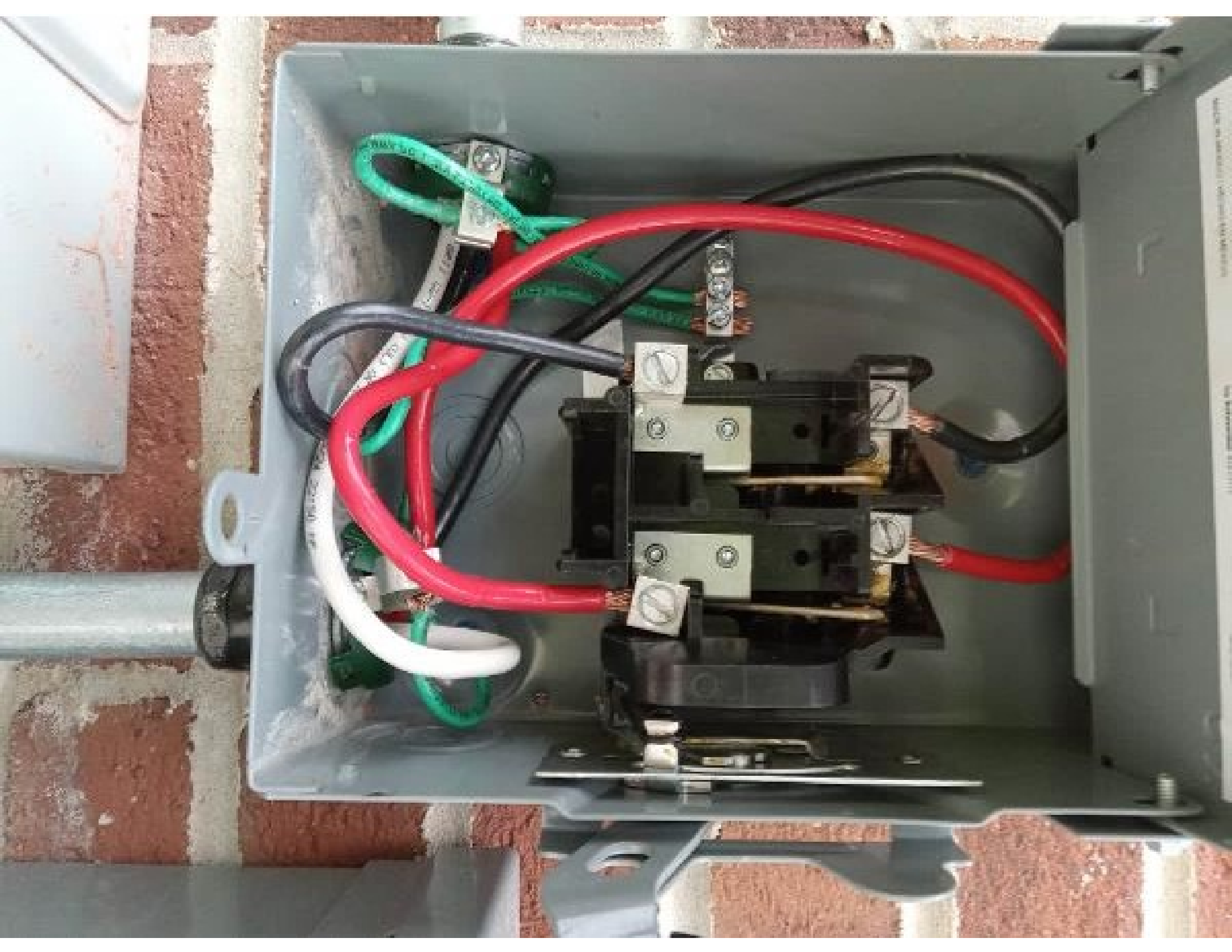


WARNING

⚠ PELIGRO

¡Atención! Este equipo puede estar energizado. Evite tocar los conductores eléctricos. Consulte a un electricista calificado para cualquier trabajo de mantenimiento.















Marvin Mack

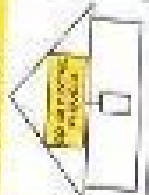


WARNING

FOR THE SAFETY OF YOU AND OTHERS, ALWAYS
USE THE SAFETY SWITCH TO SHUT OFF THE SYSTEM
BEFORE WORKING ON THE SYSTEM.

**SOLAR PV SYSTEM EQUIPPED
WITH RAPID SHUTDOWN**

TURN THE SAFETY SWITCH
TO THE OFF POSITION TO
SHUT DOWN THE SYSTEM
AND PREVENT
SHOCK HAZARD
IN THE CABIN.





⚠ DANGER - FATALITY
Always use the safety procedures and practices listed in the manual for the photovoltaic system. Failure to follow these instructions could result in death or serious injury.

**PHOTOVOLTAIC SYSTEM
AC DISCONNECT ⚠**

RATED AC OUTPUT CURRENT 150 A
MINIMAL OPERATING AC VOLTAGE 240V

⚠ WARNING
ELECTRIC SHOCK HAZARD
TERMINALS ON THE LINE AND
LOAD SIDES MAY BE ENERGIZED
IN THE OPEN POSITION

⚠ WARNING
POWER SUPPLY
ES: UTILITY GRID AND
AN ELECTRIC SYSTEM

WARNING
ELECTRIC SHOCK HAZARD
TERMINALS ON THE LIVE AND
LOAD SIDES MAY BE ENERGIZED
IN THE OPEN POSITION

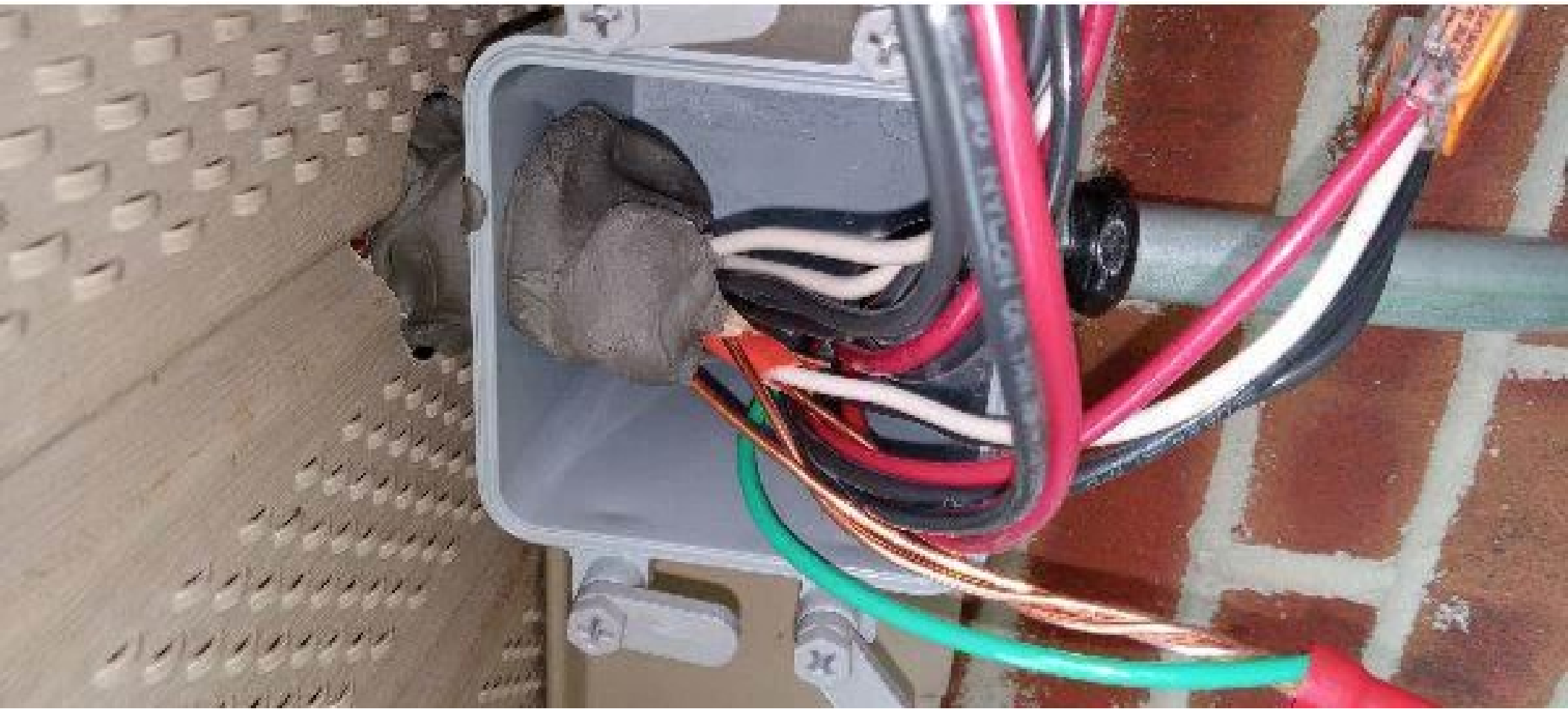
⚠ DANGER
⚠ **BY THE WAY**

WARNING
DUAL POWER SUPPLY
SOURCES: UTILITY GRID AND
PV SOLAR ELECTRIC SYSTEM

NOTICE
WORKS OF PROGRESS
IN CLOSE PROXIMITY
BLUE RAVEN SOLAR
1800 377-4480



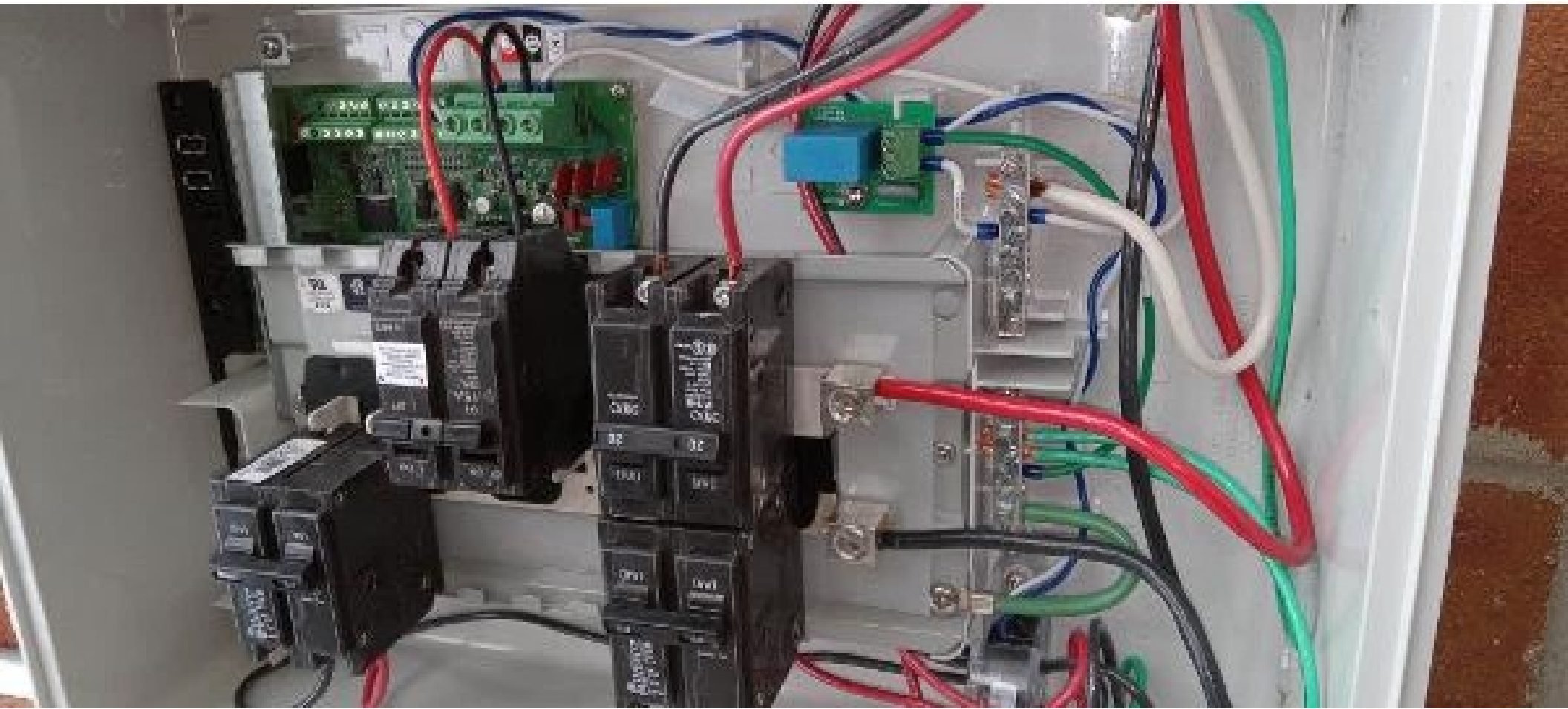




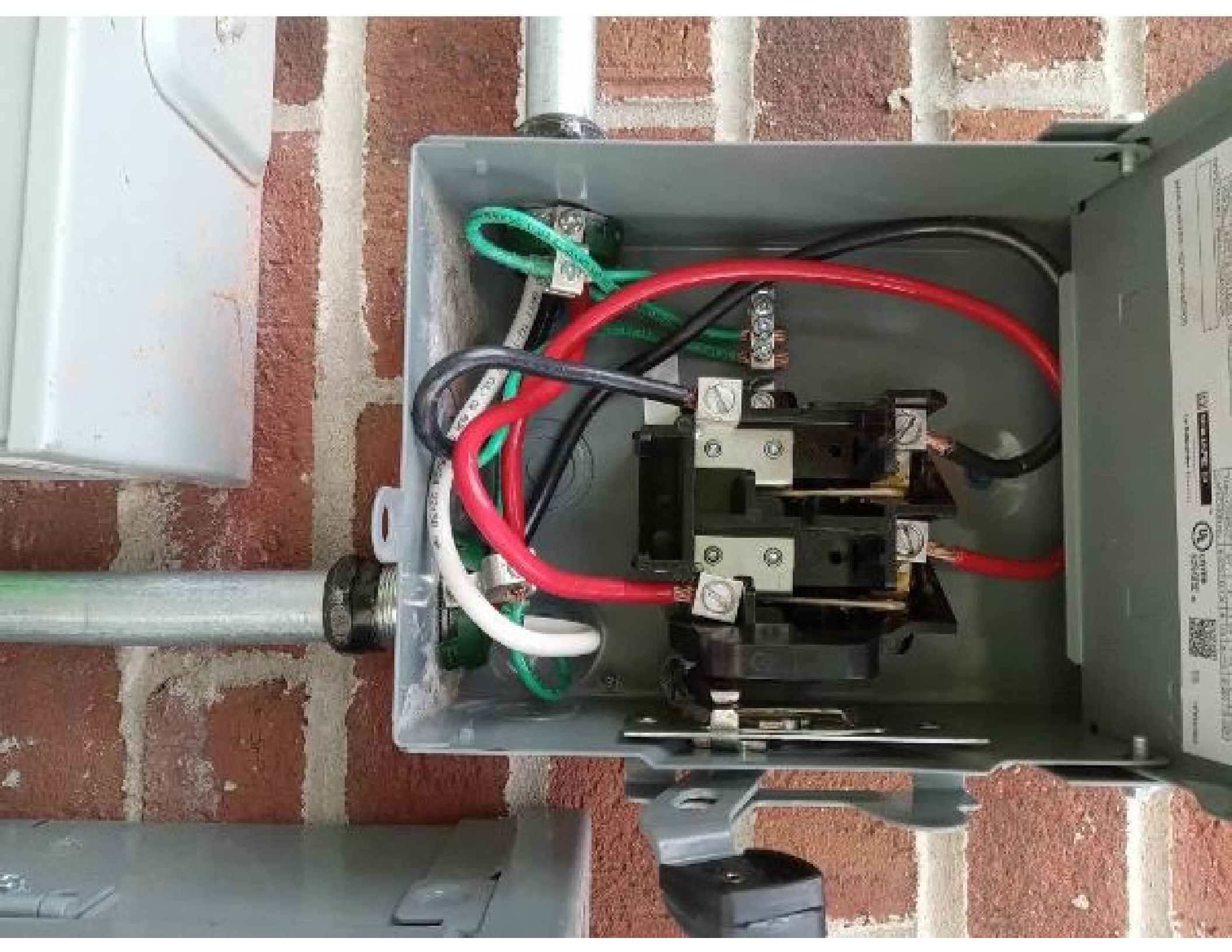
















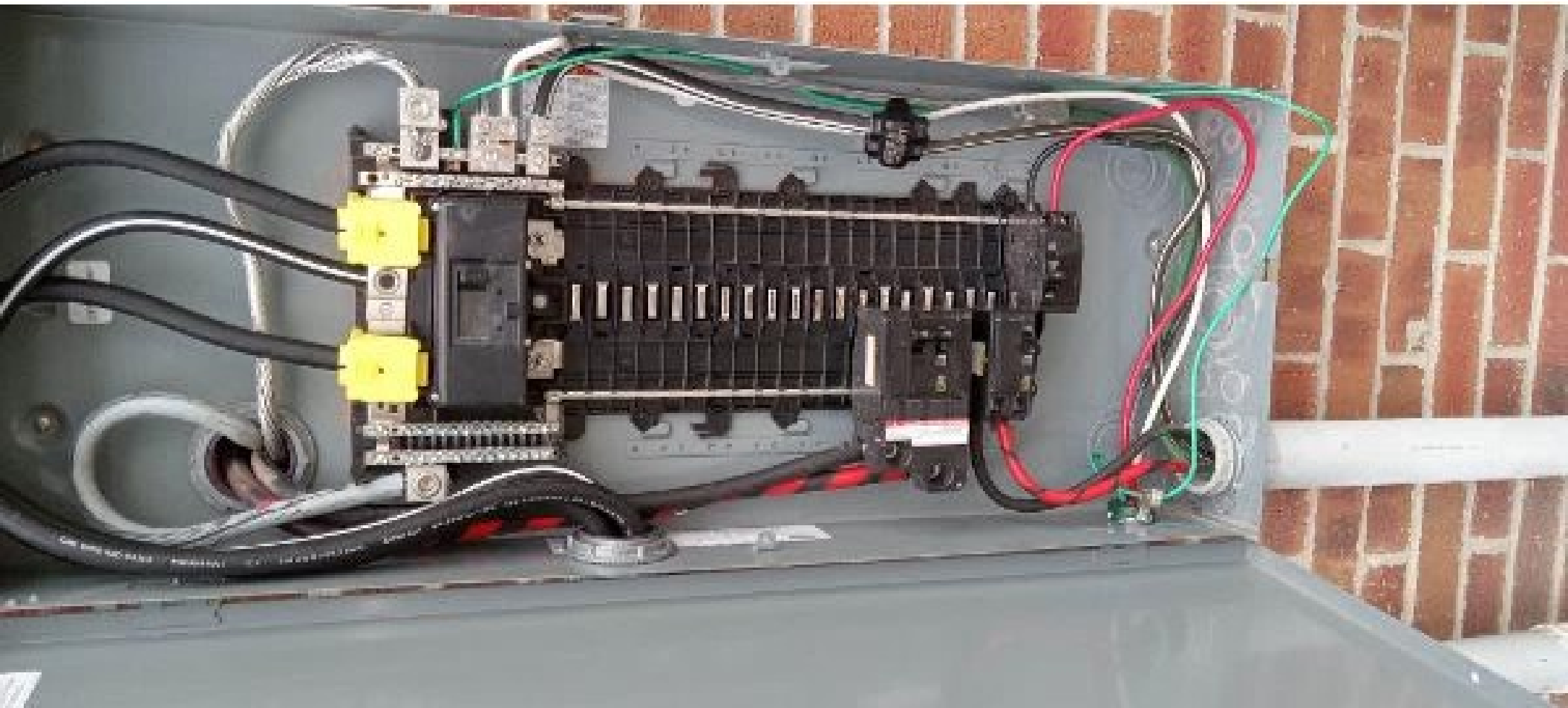


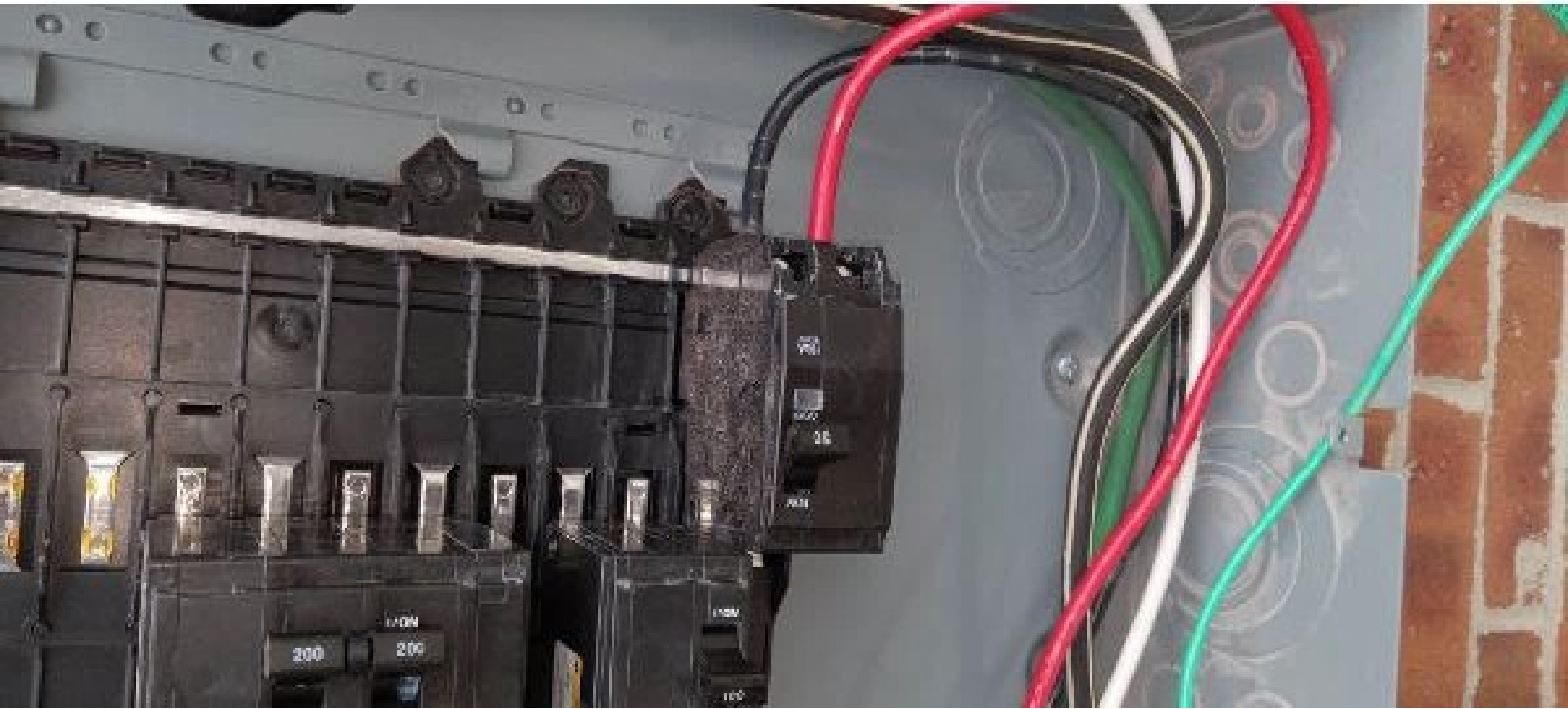
10/10/2020	10/10/2020	10/10/2020			
10/10/2020	10/10/2020	10/10/2020			
10/10/2020	10/10/2020	10/10/2020	10/10/2020	10/10/2020	
10/10/2020	10/10/2020	10/10/2020	10/10/2020		



1	2	3
4	5	6
7	8	9
10	11	12





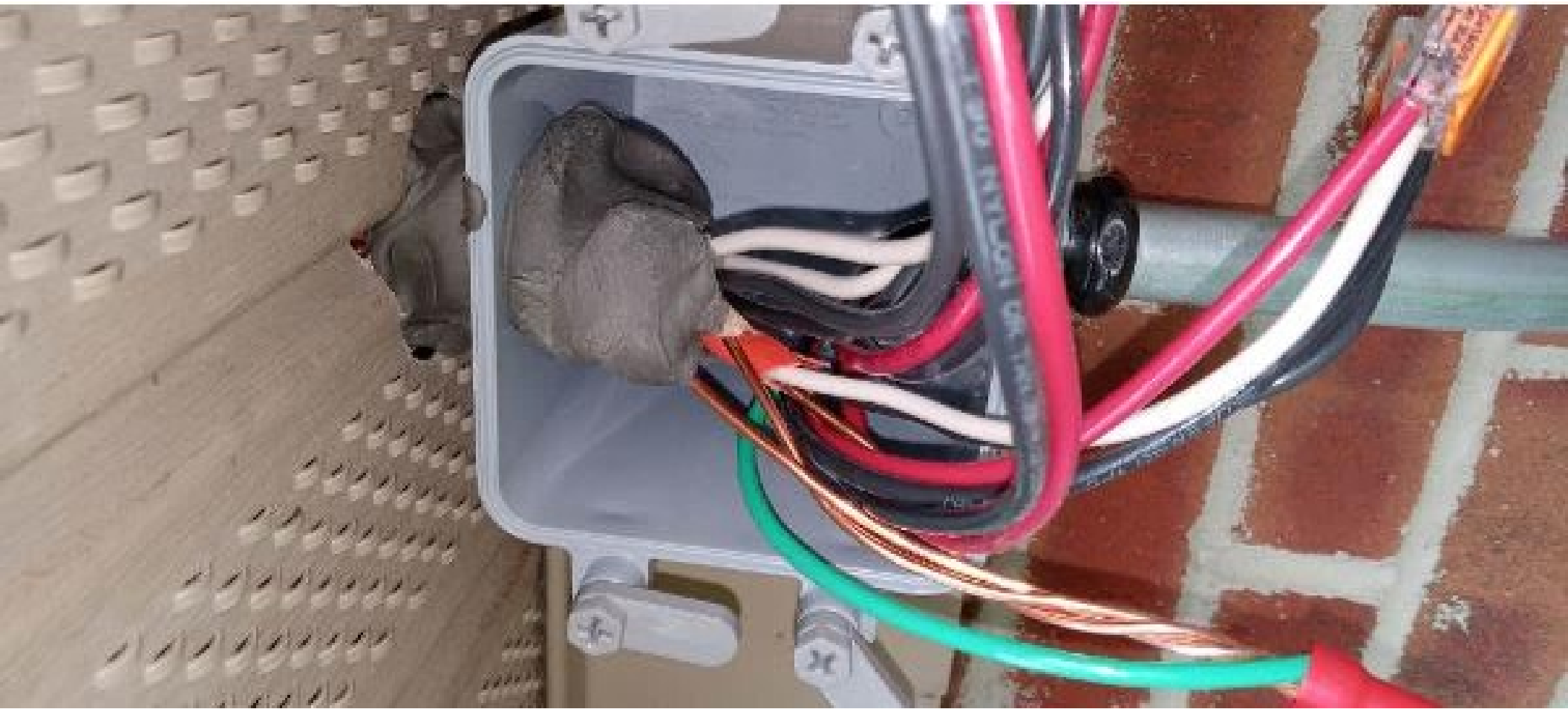








Marvin Mack





EMPHASE

108M

ATTENTION

Made in the USA
from imported parts

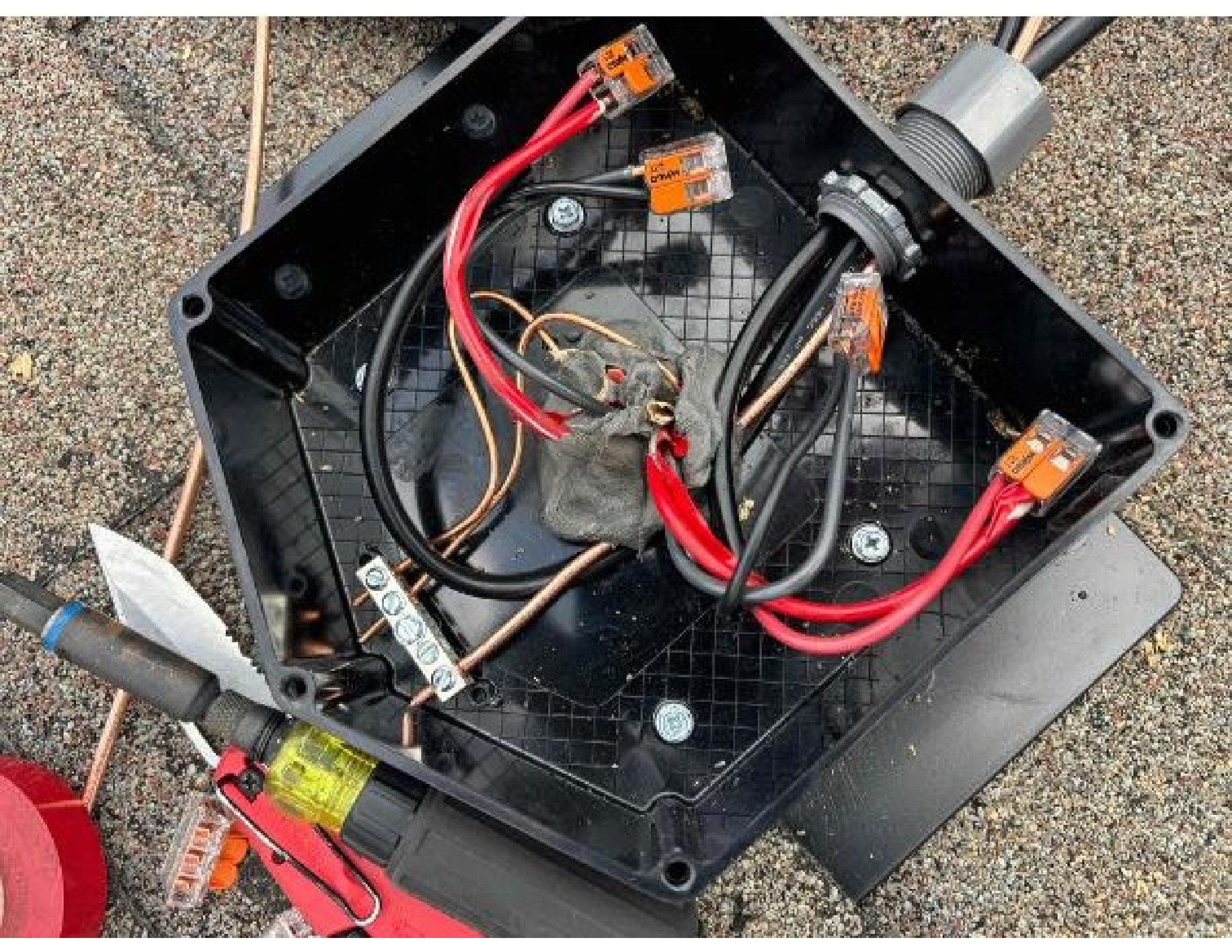


10

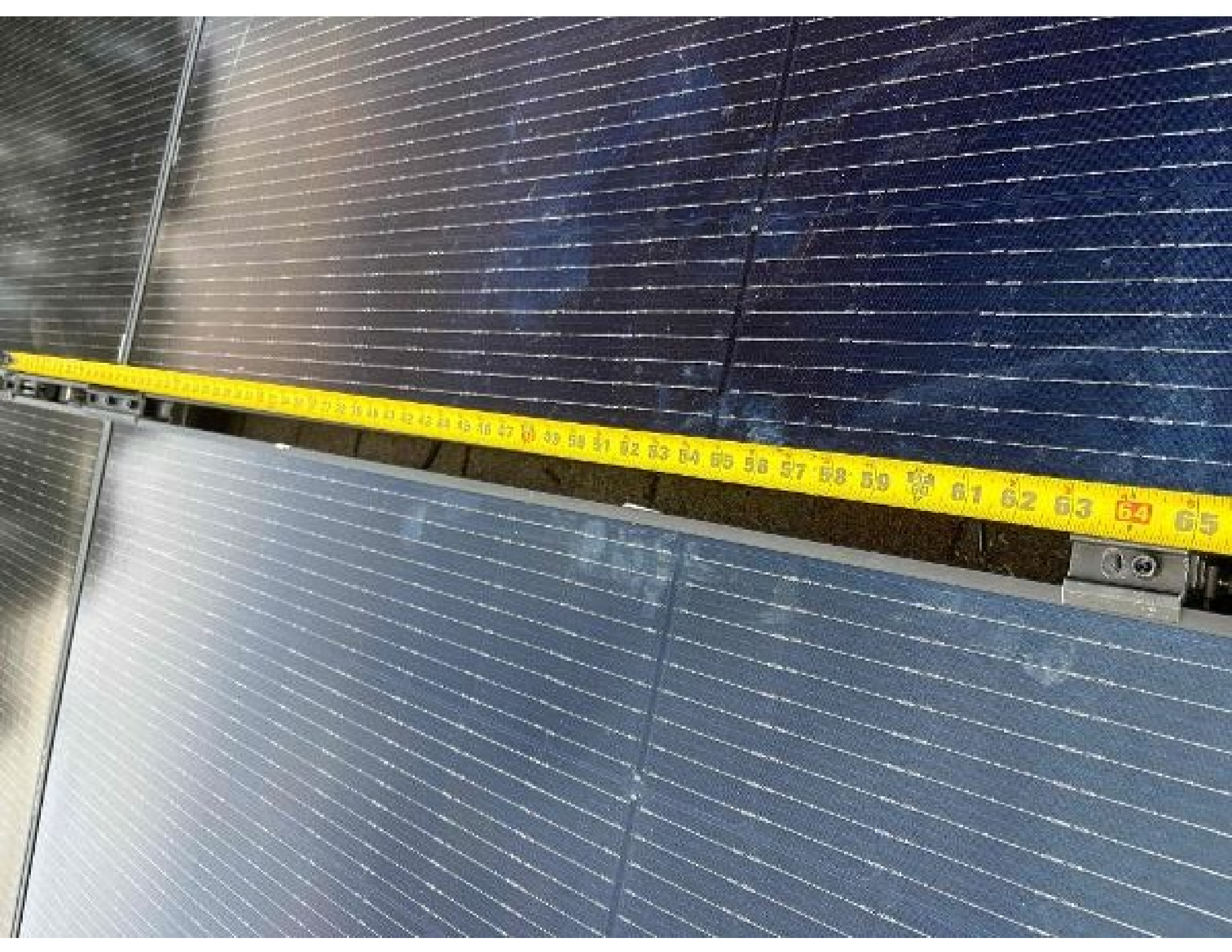
055

USE INSE PROTECTANT

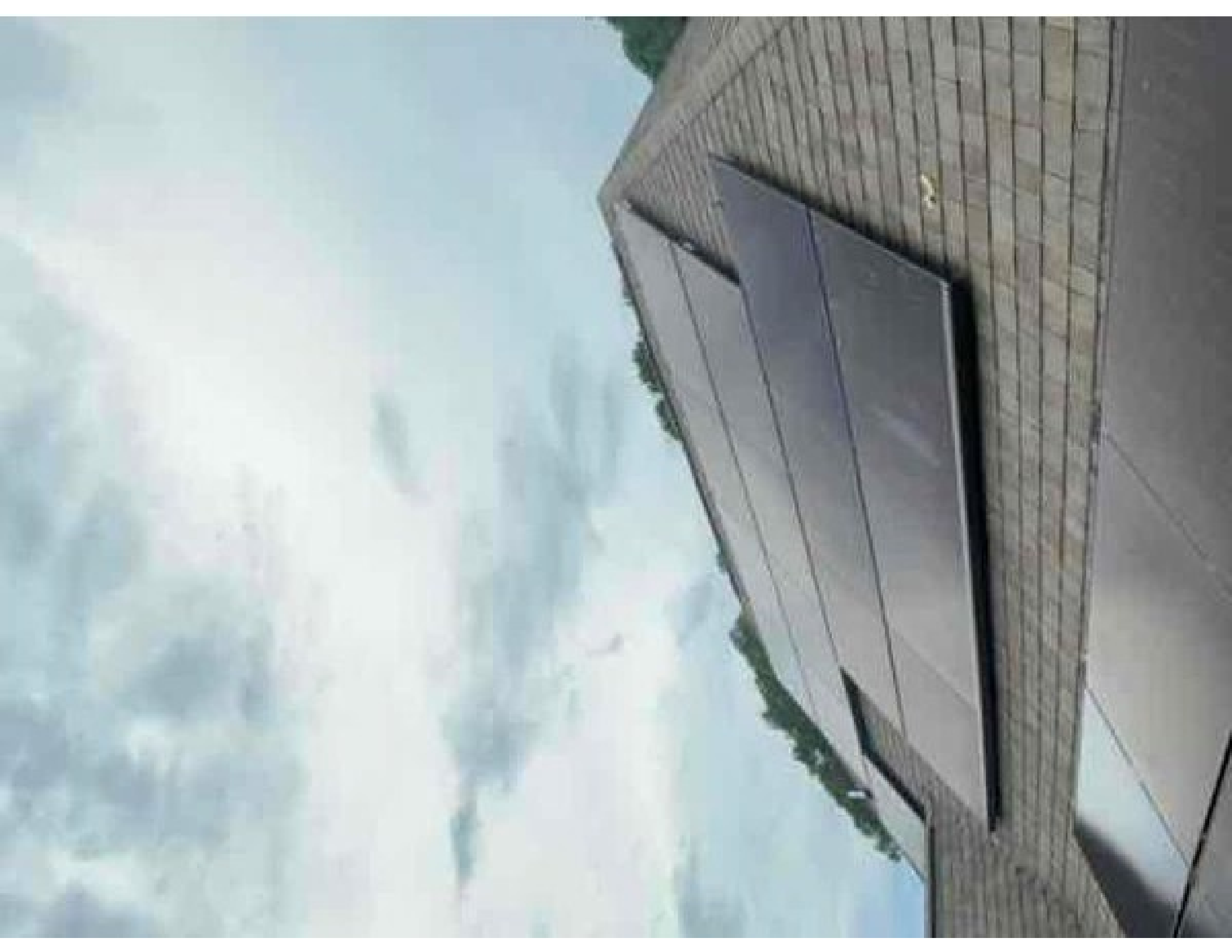


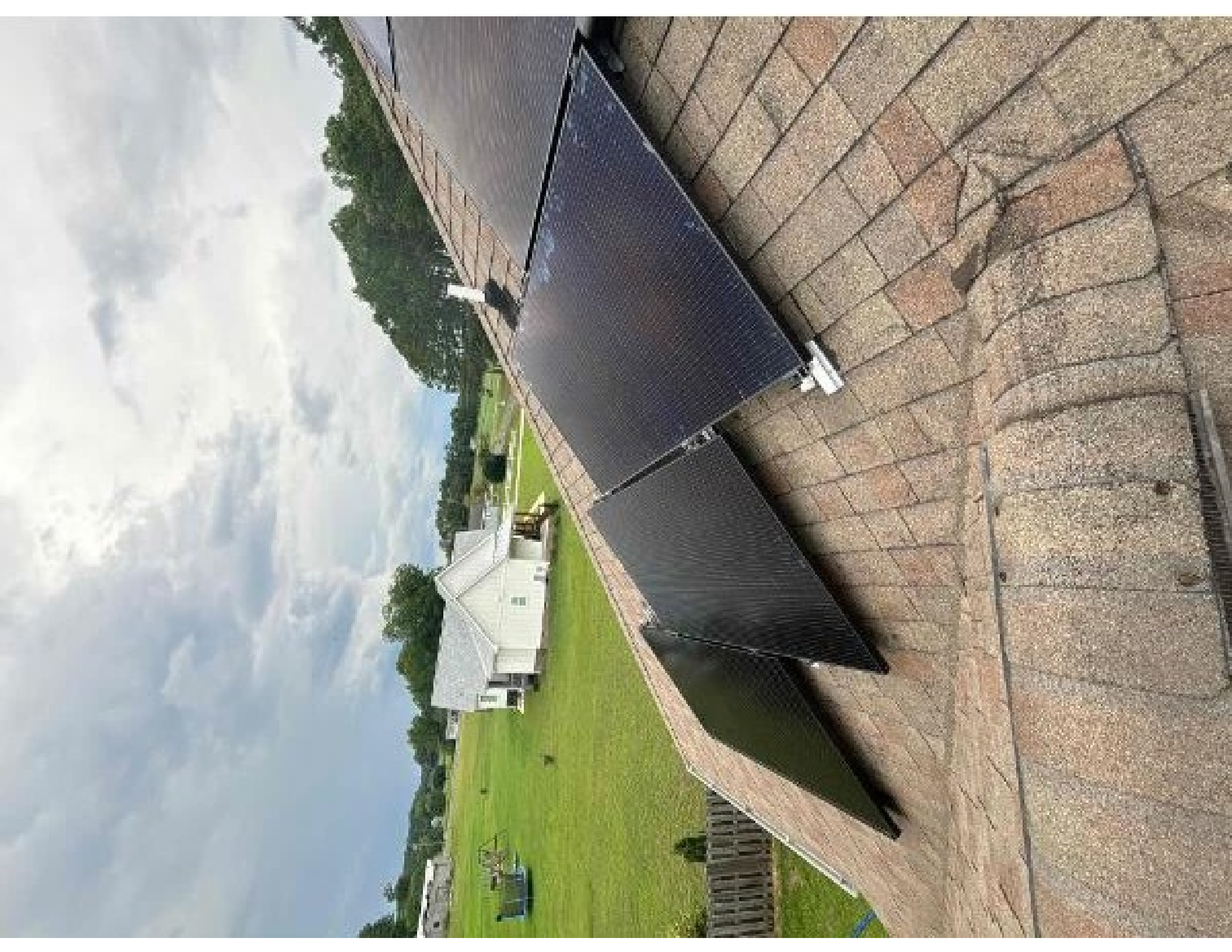


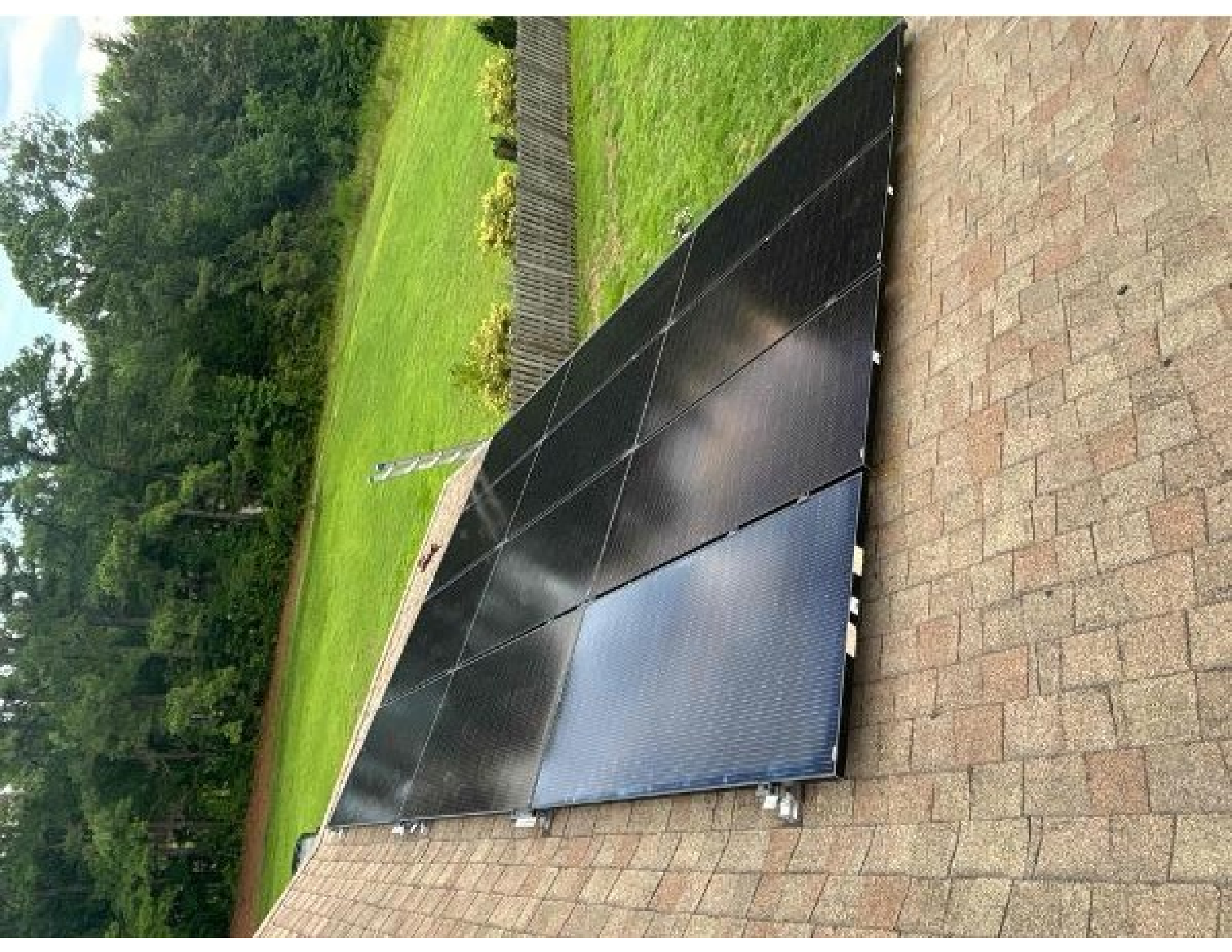


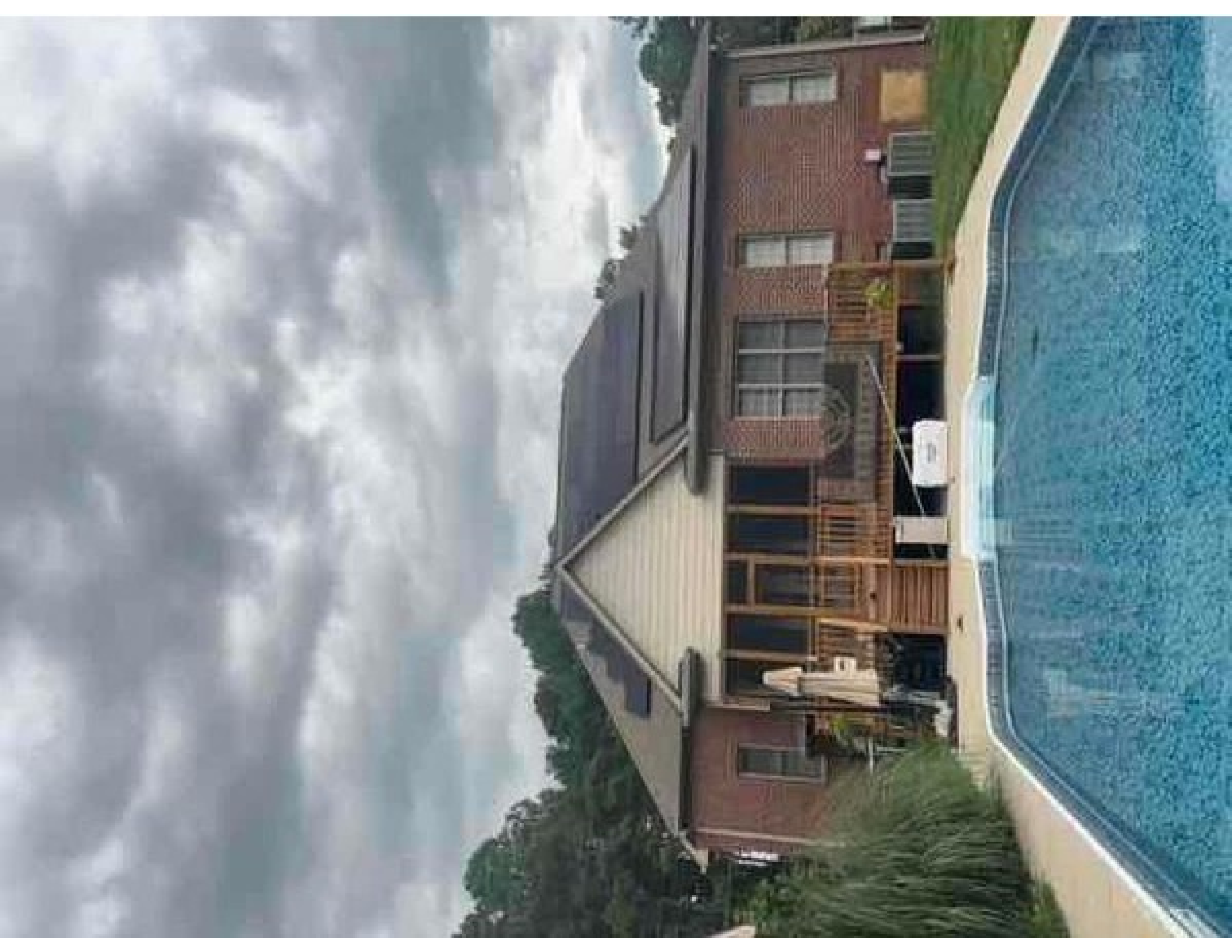


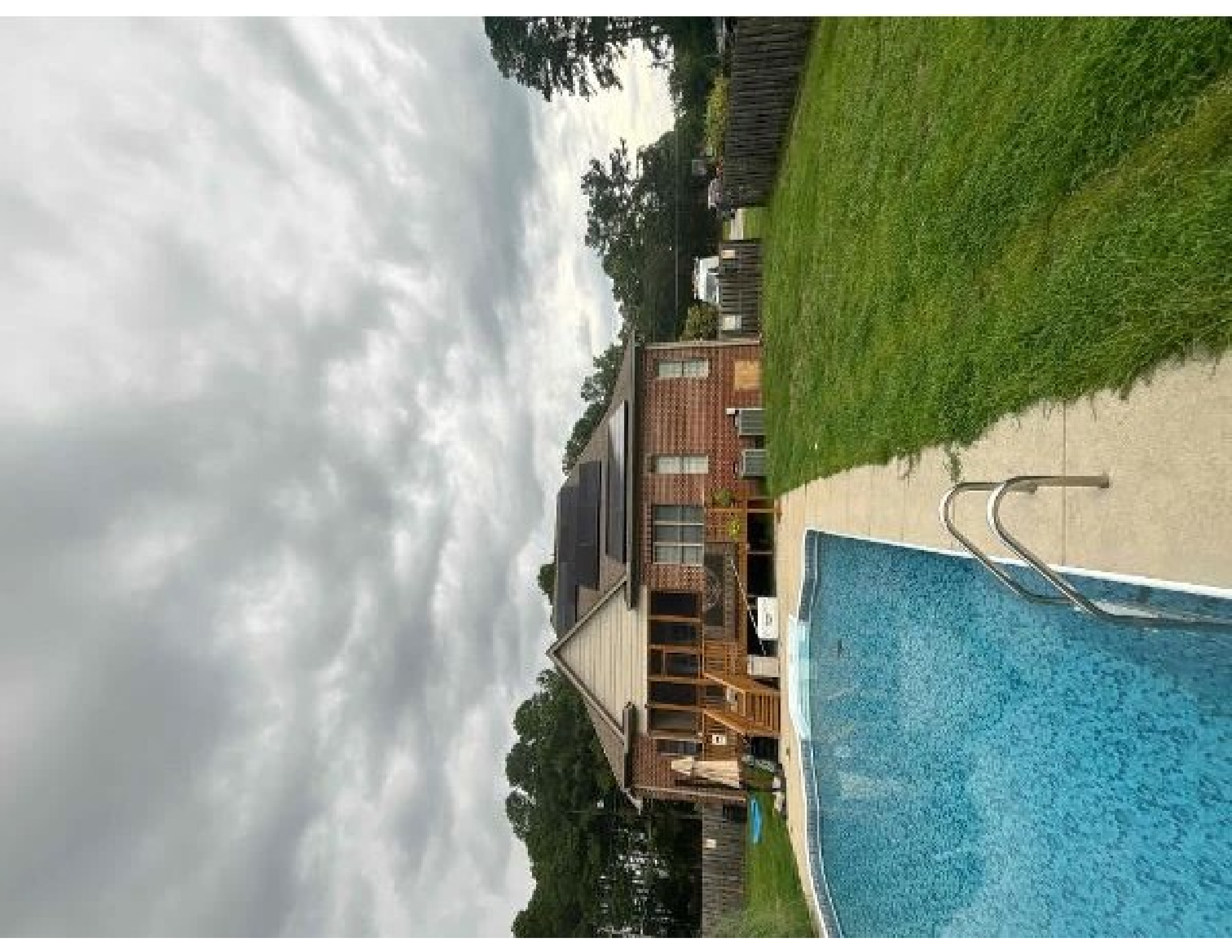


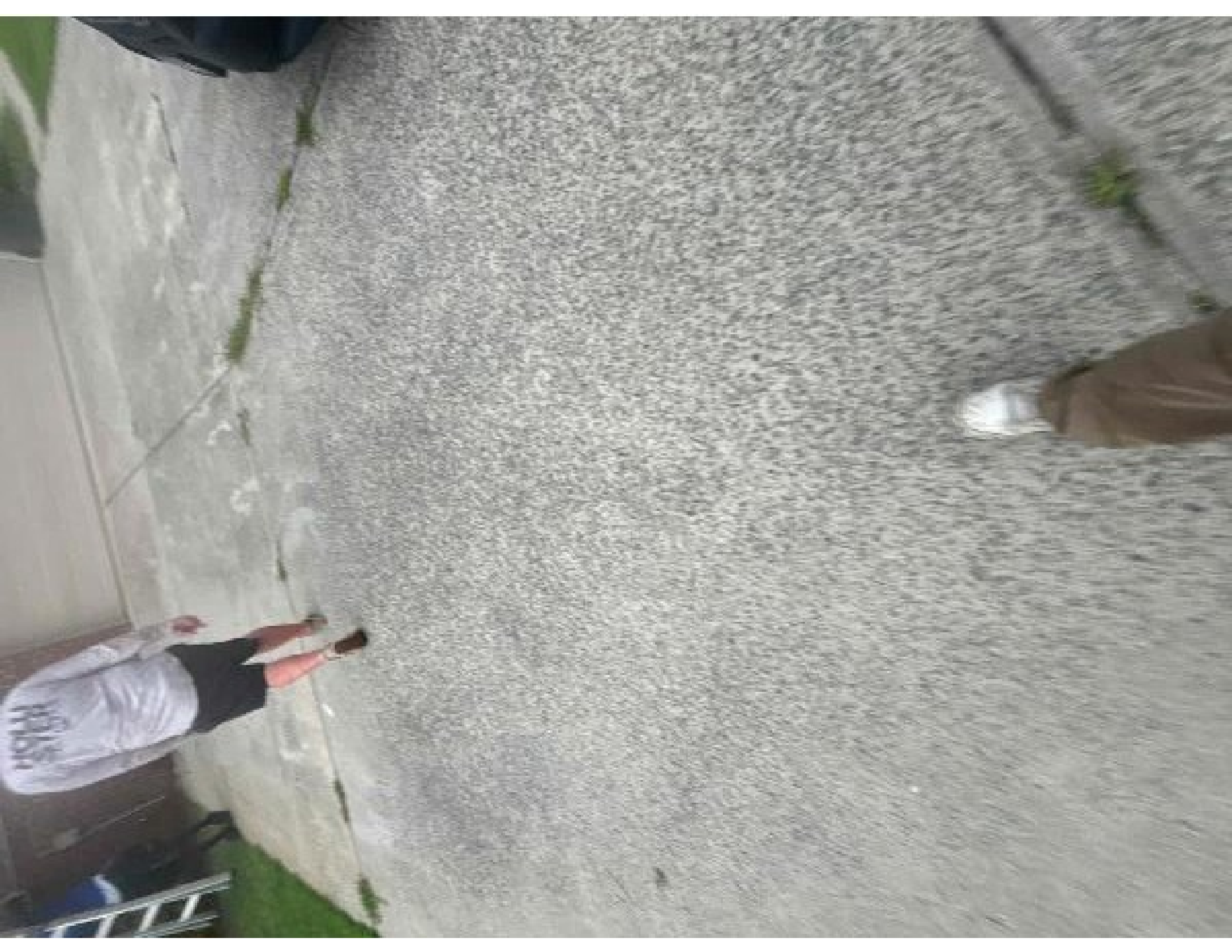












UNIRAC SFM INFINITY RACKING
FOR MONITORING AND DISCONNECTING SOLAR SYSTEMS
UNIRAC.COM/UNR701









