





26



Q-TRON BLK M-G2+ 425

PERFORMANCE AT STANDARD TEST CONDITIONS*	
Maximum power (P _{max})	425
Open circuit voltage (V _{oc})	13.56
Short circuit current (I _{sc})	35.03
Operating voltage (V _{mp})	12.88
Current at maximum power (I _{mp})	32.74
Efficiency at maximum power (%)	19.00 (20)
Maximum system voltage (V _{max})	1000 (1000)
Weight (kg)	21.2 (46.7)

qcells

Assembled in USA

WARNING: This product contains lead and cadmium. Do not dispose of this product in the environment. For more information, please refer to the user manual.

CAUTION: Do not touch the solar cells. The solar cells are very sensitive to physical damage. Do not touch the solar cells with your hands or any other objects. Do not touch the solar cells when they are wet or when they are exposed to high temperatures.

UL Listed Class C Type 1
Fuses 100A 250V

20422343300701725

26 pecan grove ln
luquay-varina nc 27526



204223433500101725

We aim for a greener tomorrow with completely clean energy solutions

Q.TRON BLK M-G2+ 425

PERFORMANCE AT STANDARD TEST CONDITIONS*

Nominal Power* (+5W/-0W)	P _{MPP}	[W]	425
Short circuit current*	I _{SC}	[A]	13.66
Open circuit voltage*	V _{OC}	[V]	39.03
Current at maximum power	I _{MPP}	[A]	12.98
Voltage at maximum power	V _{MPP}	[V]	32.74
Maximum system voltage	V _{SYS}	[V]	1000(IEC) 1000(UL)
Weight	M	[kg/lbs]	21.2/46.7

* Measurement tolerances: P_{MPP} ± 3%; I_{SC}, V_{OC} ± 5% at STC: 1000 W/m², 25 ± 2°C, AM 1.5 according to IEC 60904-3. Data given are rated (nominal) values. IEC 61215:2016; IEC 61730:2016.



www.siv.com
ID 1111220277

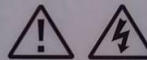


204223433500101725

Hanwha Q CELLS USA Inc.,
300 Nexus Drive, Dalton GA 30721, USA

qcells

Assembled in USA



DANGER!
Risk of electric shock!
DO NOT connect or disconnect plug contacts while system is under load current. Refer to the Installation and Operation Manual before installing, operating or servicing this unit.

DANGER!
Risque de choc électrique!
NE PAS connecter ou déconnecter les connecteurs lorsque le système est en charge. Consultez le manuel d'installation et d'utilisation avant installation, utilisation et entretien du produit.

Fire Rating: Class C / Type 2
Fuse Rating: 20A

U.S. Patent No. 9,893,215
(solar cells)

EMAIL service@q-cells.com
WEB www.qcells.com

26 pecan grove ln
fuquay-varina nc 27526























MC-2 | PV RAPID
SHUTDOWN EQUIP
(P) 1879359-00-9
(S) GF224166000002

MAX DC VOLTAGE 1000V
OPERATING DC VOLTAGE 8-165V
MAX CURRENT 13A

MAX SHORT CIRCUIT CURRENT 17A
SHUTDOWN TIME LIMIT 100SEC
OPERATING TEMP -45C TO 70C
NEMA 4X/IP65
MADE IN USA



Intertek
9915383

CONFORMS TO UL STD 1741





























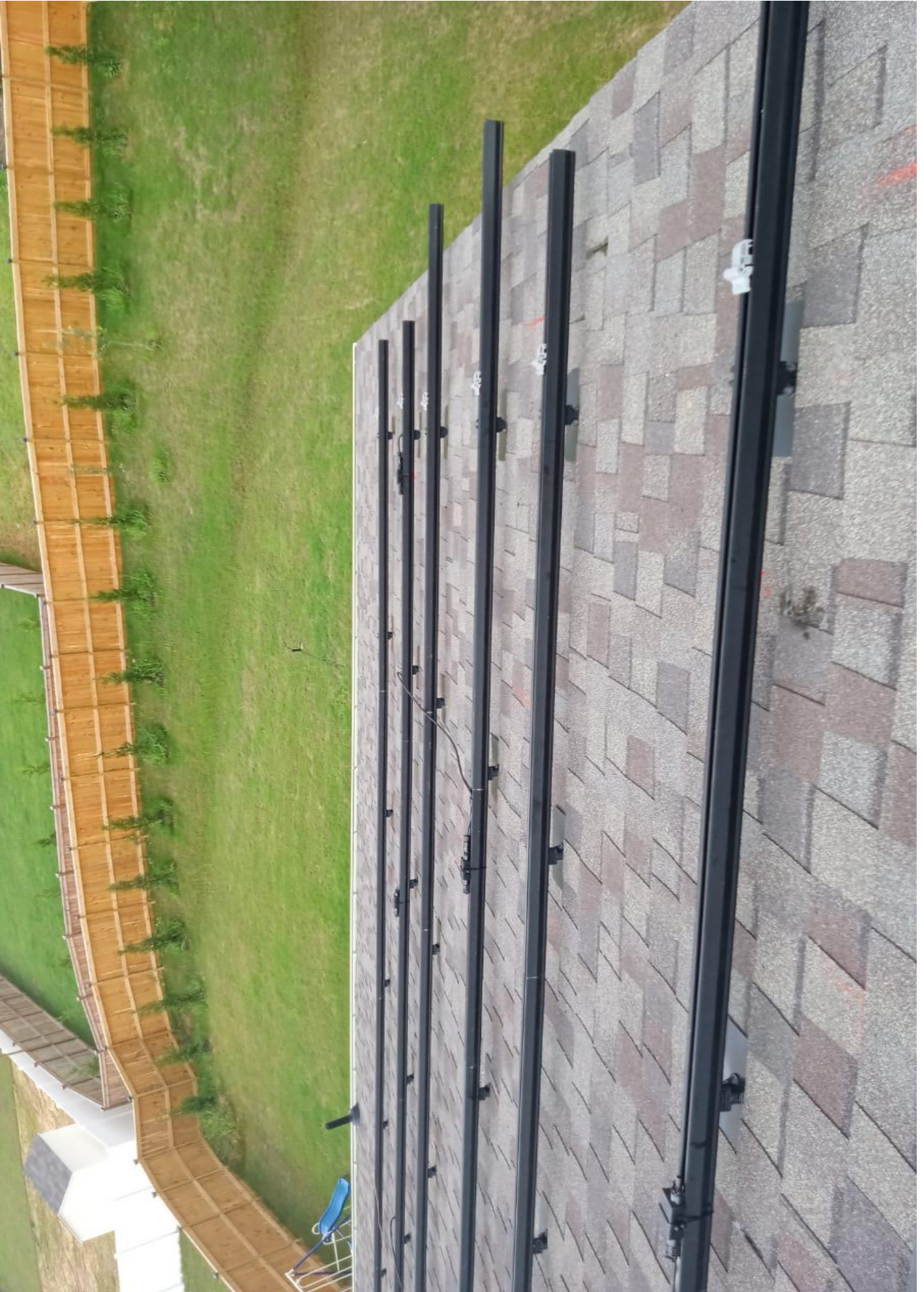


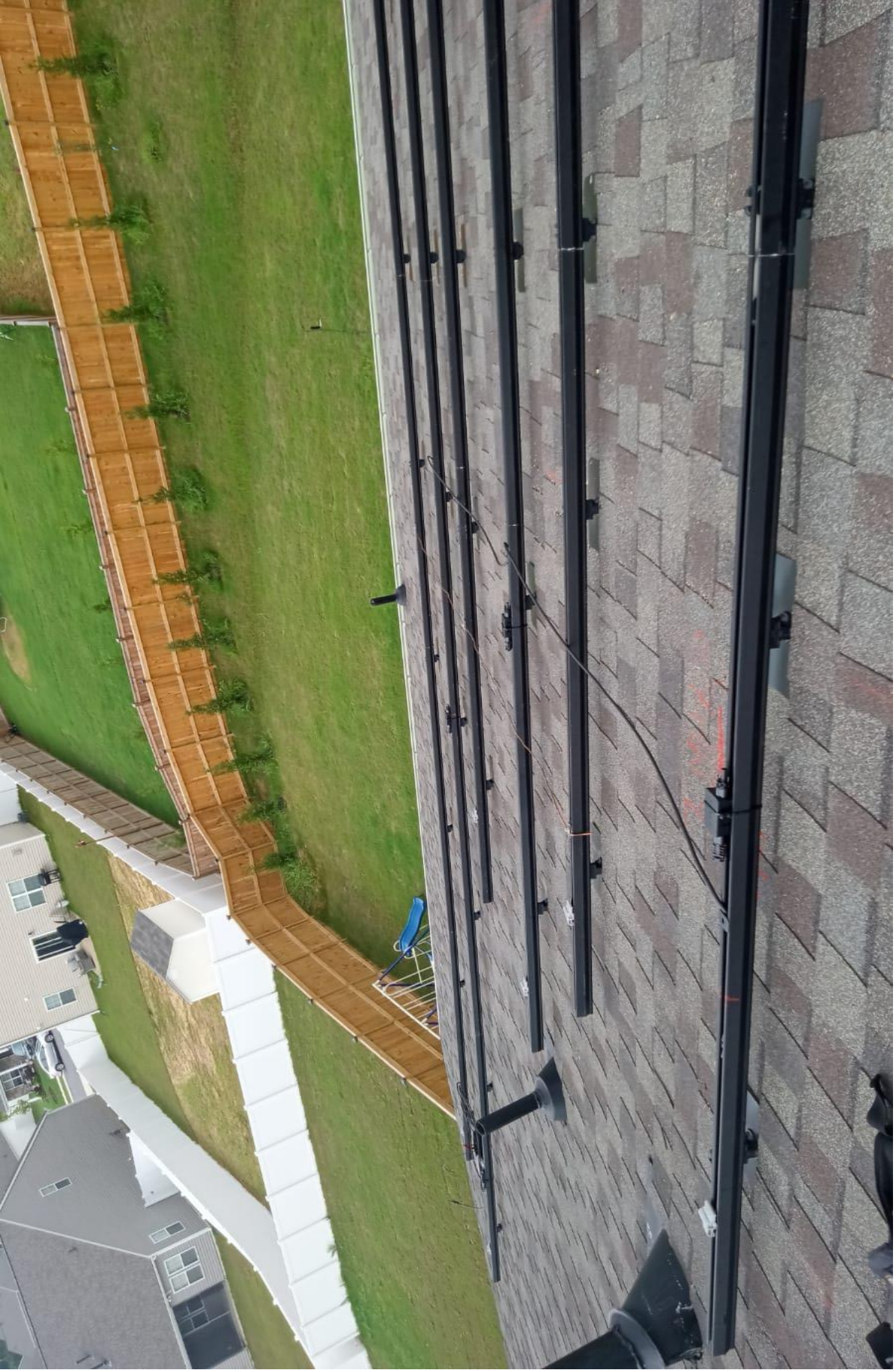


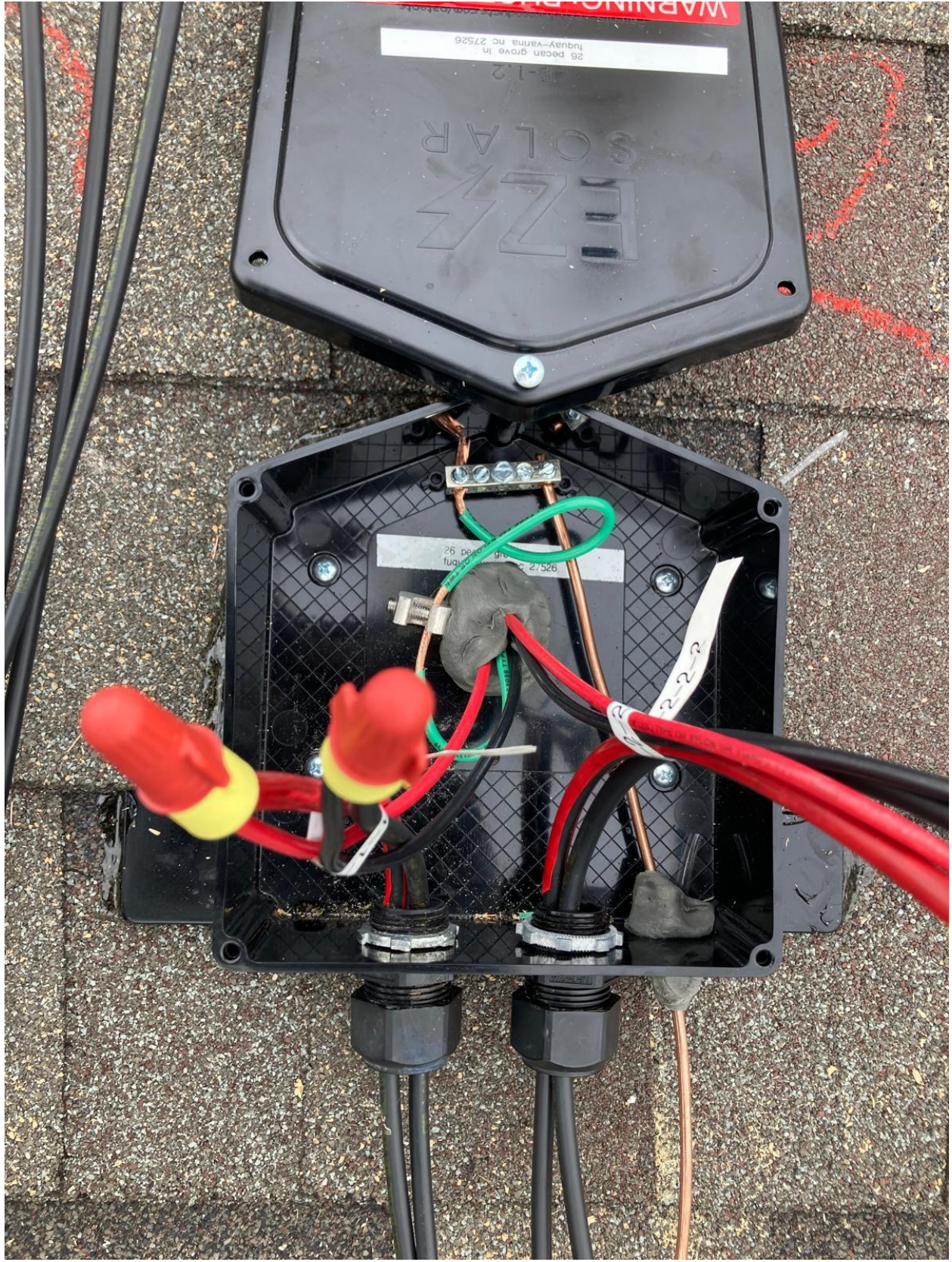


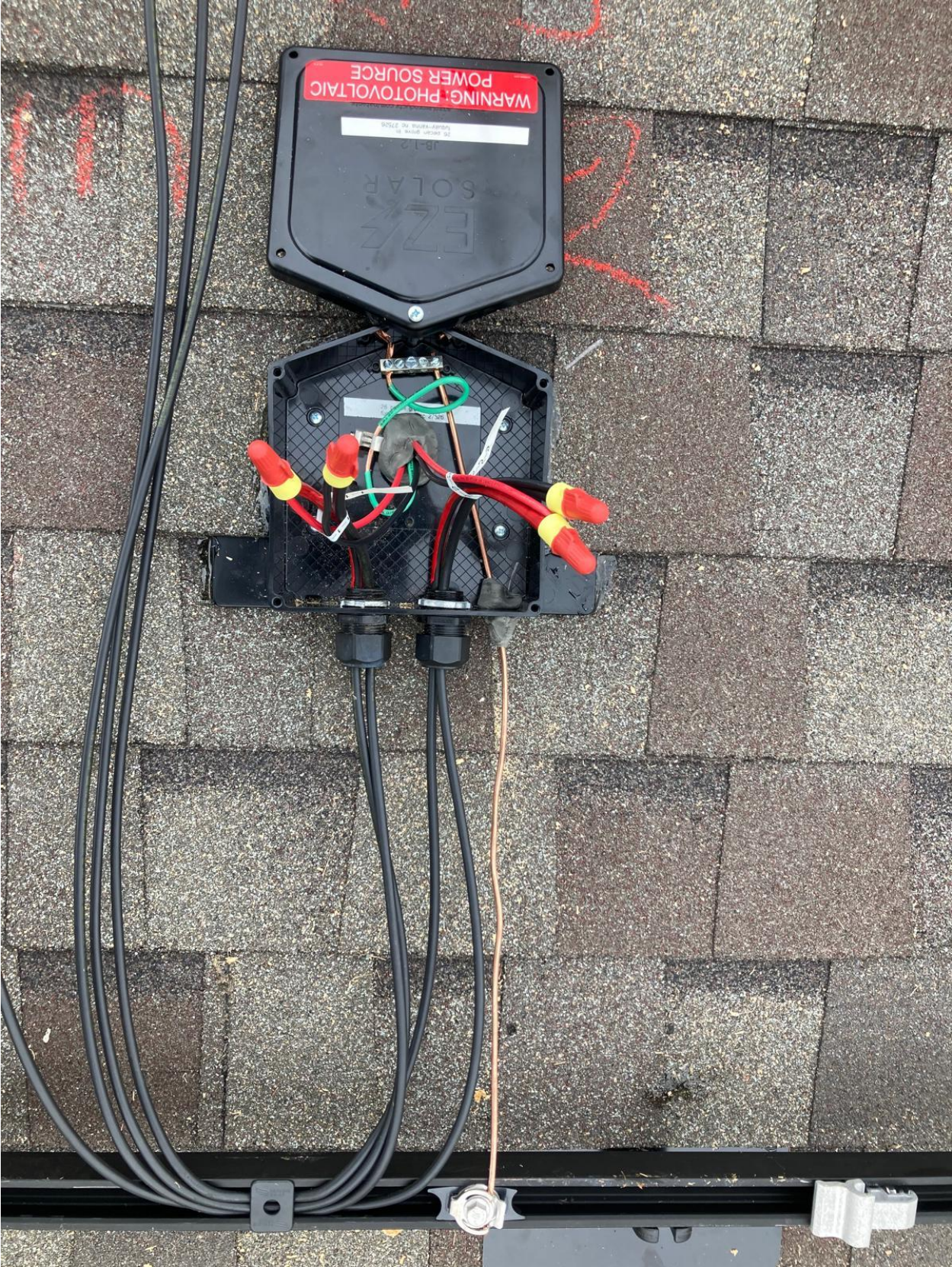


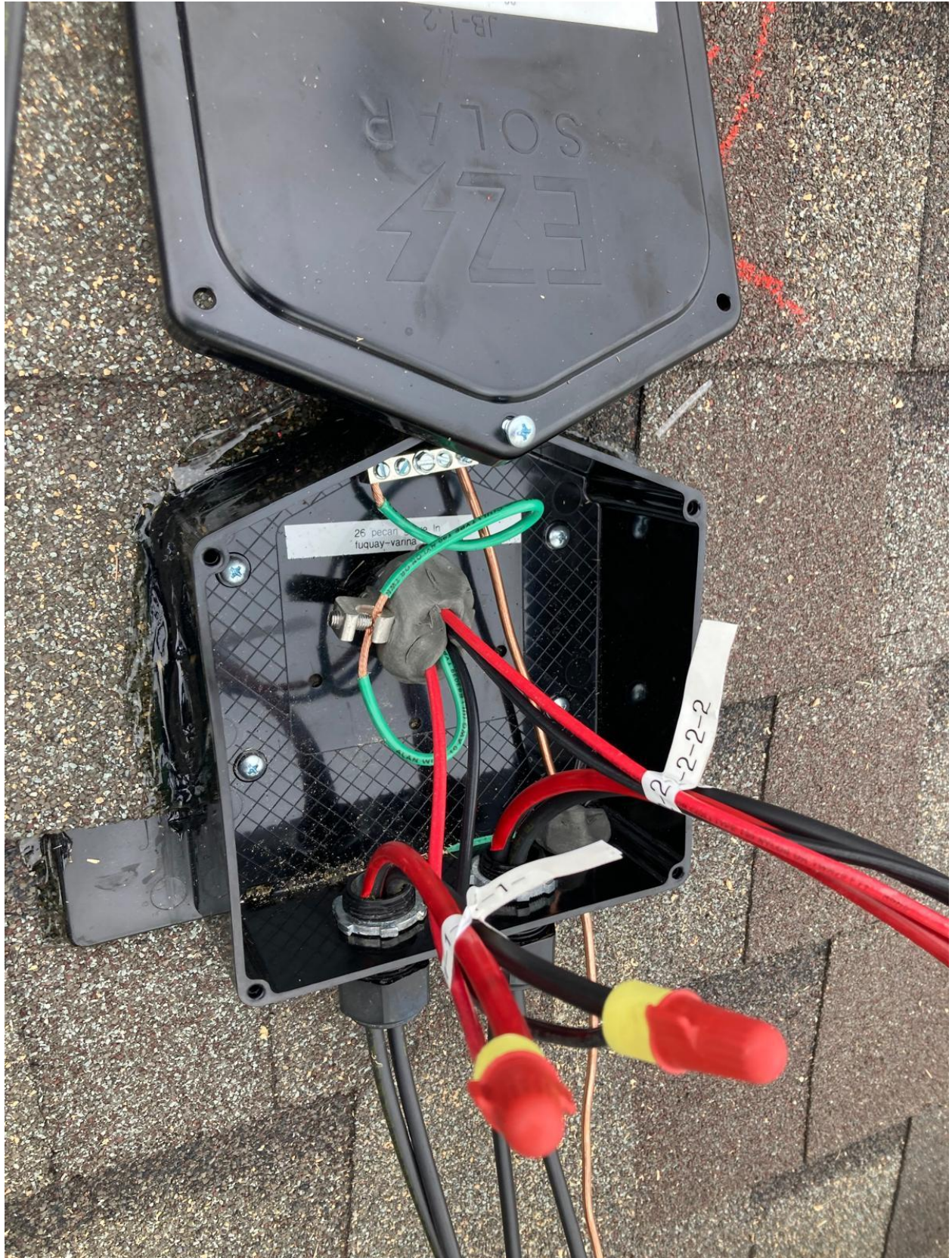
















EZ SOLAR

JB-1.2

26 pecan grove ln
fuquay-varina nc 27526

Patents: ezsolarproducts.com/patents

**WARNING: PHOTOVOLTAIC
POWER SOURCE**

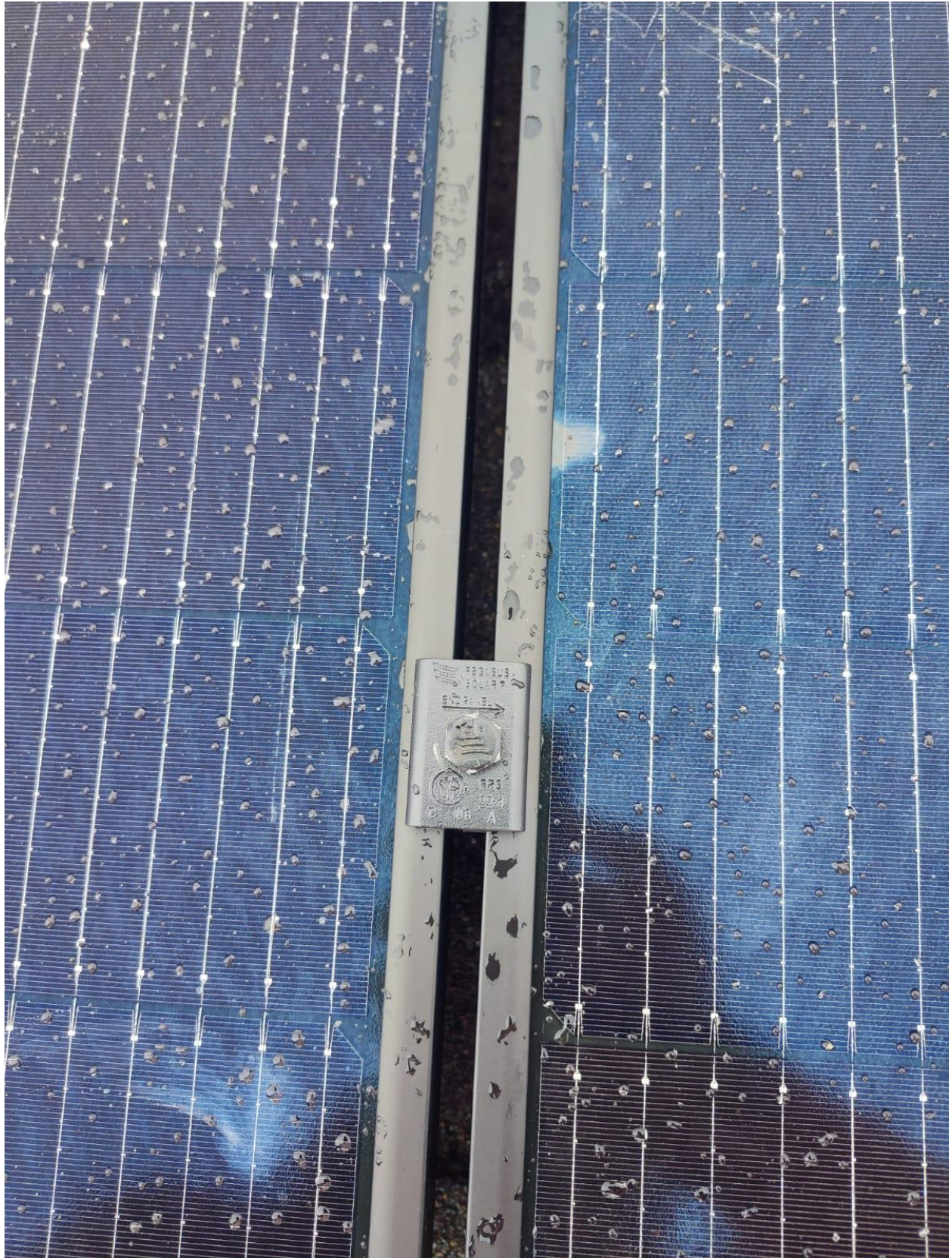
02-314

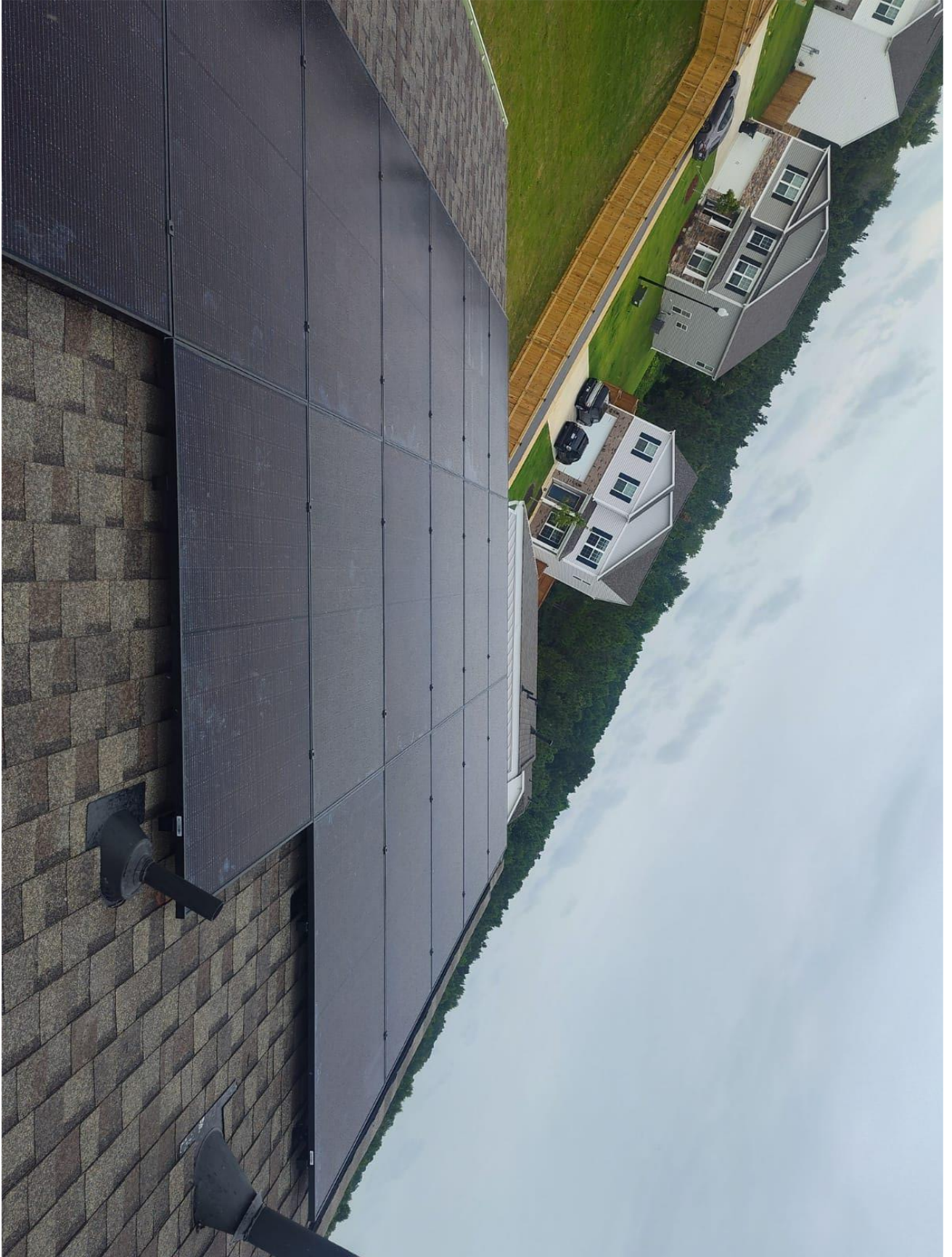










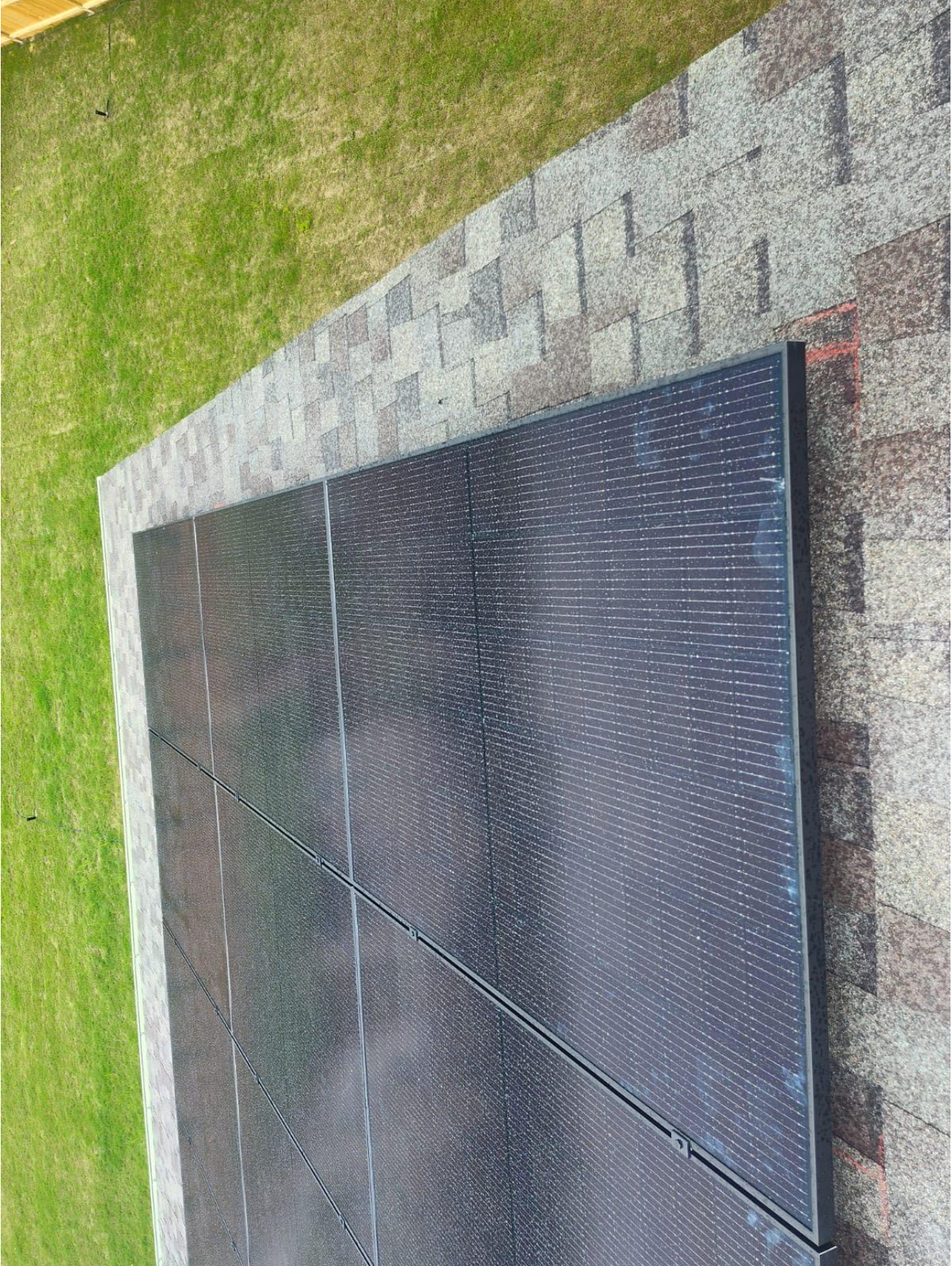






































RAPID SHUTDOWN SWITCH FOR SOLAR PV SYSTEM

EATON
AC DISCONNECT
WARNING
RAPID SHUTDOWN SWITCH FOR SOLAR PV SYSTEM

MAIN BATTERY SYSTEM DISCONNECT
TESLA
POWERWALL

EATON
WARNING
Hazardous Energies
Do not touch the wires or the metal enclosure

3187597 CONFORMS TO UL 6511ST-1 MA TC2 SW - PPC-FL 12-31-11
FRALDY
MADE IN CANADA

FRALDY

FRALDY

FRALDY