



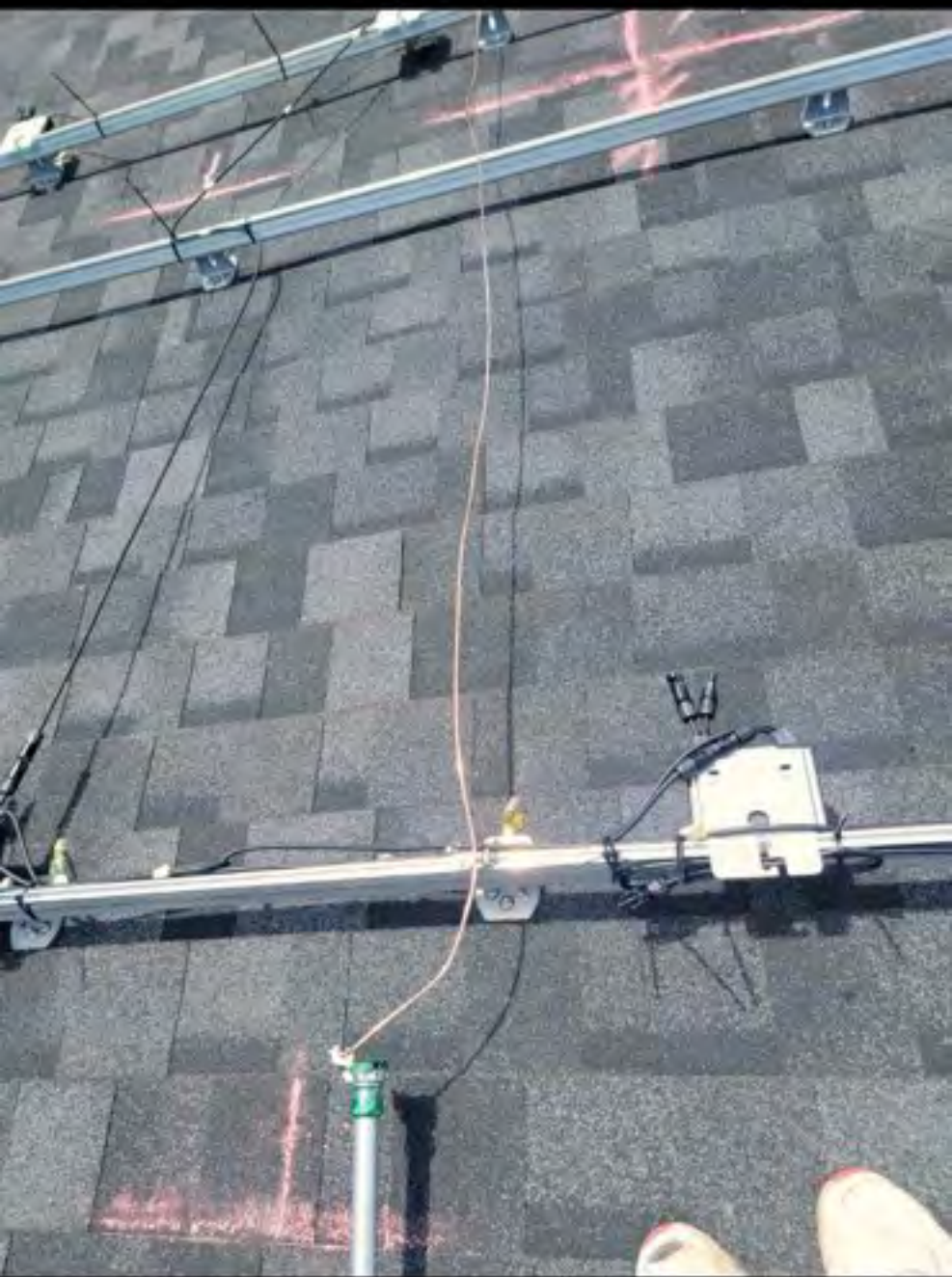


Wasserman
Finny



















11-0000121-00



Do Not
Remove

11-0000121-00



PowerEdge Technologies Ltd.
PowerEdge Technologies Center
www.dell.com/latam/latamdatacenter

FC

CAUTION

NOT FORGET TO REMOVE THE
RISK OF ELECTRICAL SHOCK.
RISK OF ELECTRICAL SHOCK WHEN THE
ELECTROSTATIC DISCHARGE (ESD) PROTECTION
IS SUPPLIED A DEVICE MUST BE
CORRECTLY CONNECTED TO THE
CORRECT SUPPLY. BEFORE CONNECTING OR
DISCONNECTING THE POWER SUPPLY, YOU MUST
TURN OFF THE POWER SUPPLY AND
DISCONNECT THE POWER SUPPLY.

PowerEdge Technologies Ltd.
Power Optimizer

PowerEdge Technologies Ltd.
Power Optimizer
Manufacturing

WARNING

WARNING: Do not touch the power supply fan or the fan blades. The fan blades are sharp and can cause injury.

AVERTISSEMENT

NE PAS TOUCHER LA VENTILATEUR
OU LES PATES DU VENTILATEUR. LES
PATES DU VENTILATEUR SONT
DANGEREUSES ET PEUVENT CAUSER
DES BLESSURES. NE PAS TOUCHER
LE VENTILATEUR OU LES PATES DU
VENTILATEUR. NE PAS TOUCHER
LE VENTILATEUR OU LES PATES DU
VENTILATEUR.



































Electrical breaker panel with multiple switches and a red emergency stop button.

Large grey electrical control box with a red warning label that reads "CAUTION" and "DANGER".

Grey electrical meter with a circular dial and a red warning label that reads "CAUTION".

Large grey and black air conditioning unit mounted on a concrete pad.

Yellow caution tape with the word "CAUTION" printed on it.

Red caution tape.



! WARNING
DUAL POWER SUPPLY
SOURCES: UTILITY GRID
AND PV SOLAR
ELECTRIC SYSTEM

⚡ CAUTION ⚡
SOLAR ELECTRIC SYSTEM CONNECTED

SOLAR POINT OF INTERCONNECTION

! WARNING
POWER SOURCE
OUTPUT CONNECTION
DO NOT RELOCATE THIS
OVERCURRENT DEVICE

**RAPID SHUTDOWN
SWITCH FOR
SOLAR PV SYSTEM**

**RAPID SHUTDOWN
SWITCH FOR
SOLAR PV SYSTEM**

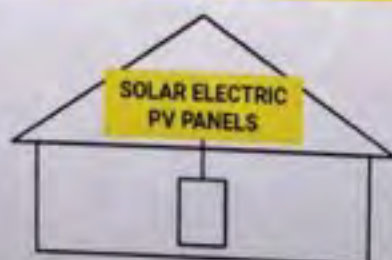
ON

**Heavy Duty
Safety Switch**
60A 240VAC, 250VDC
Horsepower Rated

 **⚠ DANGER**
Hazardous Voltage. Will cause death or serious injury.
Turn off before replacing any fuse. Disconnect power before working on this switch. Close cover before turning power on.

OFF

**SOLAR PV SYSTEM
EQUIPPED WITH
RAPID SHUTDOWN**



TURN RAPID SHUTDOWN SWITCH TO THE "OFF" POSITION TO SHUT DOWN PV SYSTEM AND REDUCE SHOCK HAZARD IN THE ARRAY

**AC DISCONNECT
PHOTOVOLTAIC SYSTEM
POWER SOURCE**

RATED AC OUTPUT CURRENT **25** AMPS
NOMINAL OPERATING AC VOLTAGE **240** VOLTS

⚠ WARNING

ELECTRIC SHOCK HAZARD

TERMINALS ON THE LINE AND LOAD SIDES MAY BE ENERGIZED IN THE OPEN POSITION

PHOTOVOLTAIC PV

solaredge

CAUTION
SOLAR ELECTRIC SYSTEM CONNECTED

solaredge

HD wave

DC DISCONNECT

ON

OFF



solaredge



solar**edge**

HD wave



BAT+ BAT- PV+ PV-

13
ION
AC211 10A
U: 80V
50/60Hz
OFF
1-117
IP20
14
Lock
Made in Australia

MOD 2
TER 1

solar edge

L1 L2 N
L2 L1

Backup Interface



TOOLS
CL220

Ω °C

2/20A~

200/
400A~

V=

NCV

V~

SEL

OFF

☀

RANGE

MAX

2000 Counts
400A AC Digital Clamp Meter

AUTO
9.13

True RMS

CAT III 600V

COM

VΩ

⚠



KLEIN TOOLS

CL220

Ω $^{\circ}\text{F}$

2/20A~

200/400A~

V \equiv

NCV

V~

SEL

OFF

☀

RANGE

MAX

2000 Counts
400A AC Digital Clamp Meter

AUTO
11.15

True RMS

CAT III 600V

COM

V Ω









PHOTOVOLTAIC POWER SOURCE

solaredge SE6000H-US
Grid Support Utility Interactive
Non-Isolated Photovoltaic Inverter
Max Output Power 6000W
Max DC Voltage Range 275V-600V
Max Continuous Output Power 18.5kW
Voltage Min - Max - Max 100V-500V 600V-625V
185-240-250V
271-240-280V
Max Continuous Output Current 32A
Max Output Fault Current 120A
Max DC Input Current 25A
Max DC Input Voltage 600V
Max DC Input Current 25A
Max AC Output Current 32A
Max AC Output Voltage 240V
Max AC Output Power 18.5kW
Max Ambient Temperature 40°C
Max AC Output Frequency 50/60Hz
Max AC Output Phase 1-Phase
Type I Inverter AC-1-Phase
WIFI - FI Password: Dc290c43
Activation Code: 8PDM B0E3 T116 (1st Gen -
WIFI MAC:
84-D8-C5-90-CF-43
ZigBee MAC:
400-4590
PN: SE6000H-USN88L14
SN: SV3223-8750AED7D-DA

solaredge
PHOTOVOLTAIC RAPID
SHUTDOWN SYSTEM

solaredge 750AED7D-DA
PN: SV3223-8750AED7D-DA
SN: SV3223-8750AED7D-DA

CAUTION
HIGH VOLTAGE
DISCONNECTED

WHD **WAVE**

solaredge
StorEdge Connection Unit
Max DC Voltage (PV/Battery) 480Vdc
Max DC Current (PV) 32Adc
Max Continuous DC Current (Battery) 32Adc
Max AC Voltage 240Vac
AC Single Phase Frequency 50/60Hz
Max AC Current (Grid) 40Aac
For more details refer to the installation guide
Patent marketing notice: see WWW.SOLAREDGE.COM/PATENT
DCD: SPH-US-P38-A-1
PN: SV3223-8750AED7D-DA
SN: SV3223-8750AED7D-DA
Made in Vietnam

solaredge
StorEdge Connection Unit
Max AC Current (Smart EV Charger) 40Aac
Max Continuous Output Power (Smart EV Charger) 9.6kW
Ambient Temperature: 40°C, 40°C
IP65/Type 4X
For more details refer to the installation guide
Patent marketing notice: see WWW.SOLAREDGE.COM/PATENT
Use BP Connect PV with only
Use BP Connect PV with only
Reverse Power Add (RPP) Add
PHOTOVOLTAIC RAMP AND SHUTDOWN SYSTEM
DCD: SPH-US-P38-A-1
PN: SV3223-8750AED7D-DA
SN: SV3223-8750AED7D-DA
Made in Vietnam

 **CAUTION** 
SOLAR ELECTRIC SYSTEM CONNECTED



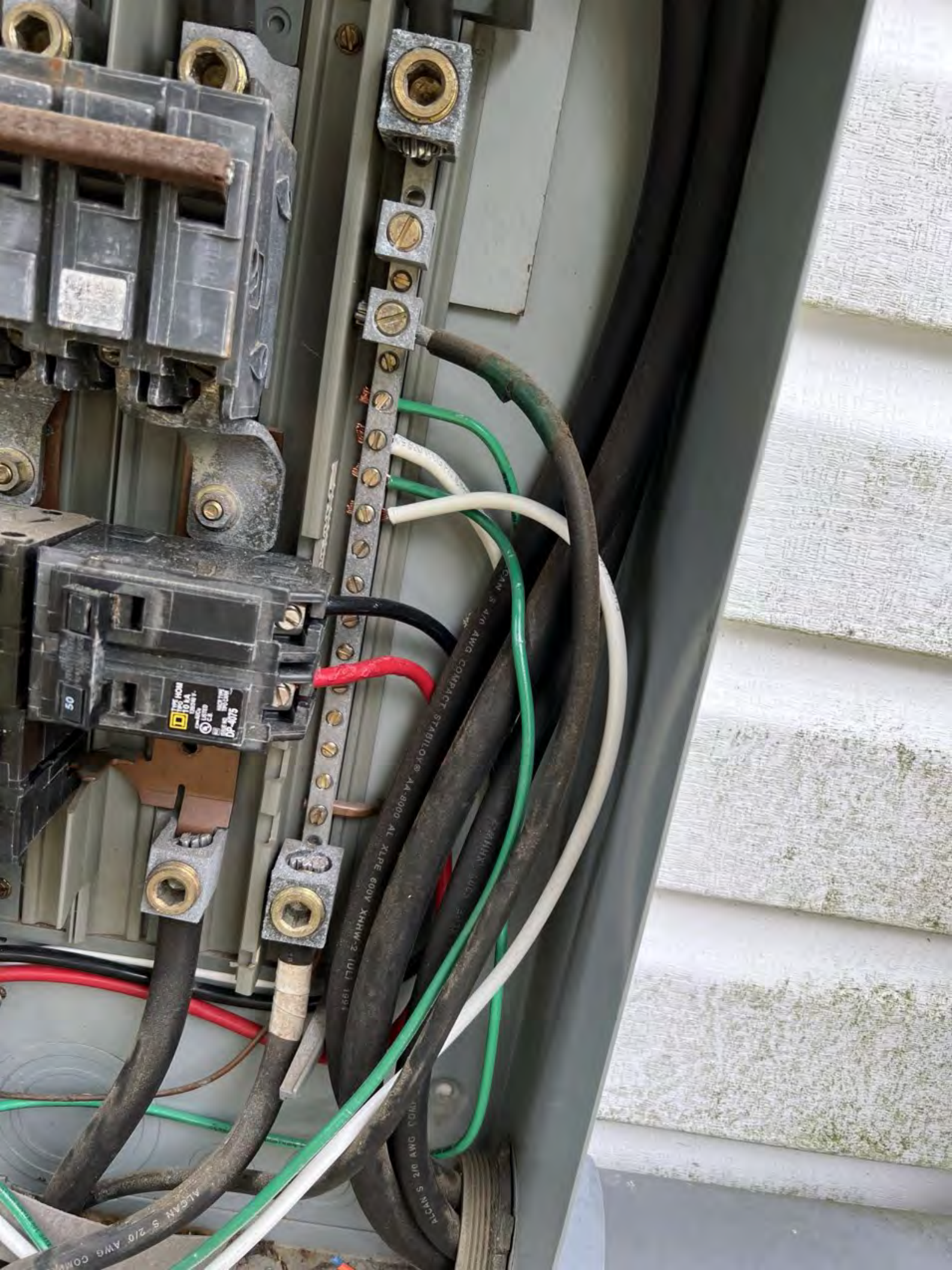
Heat
Pump.

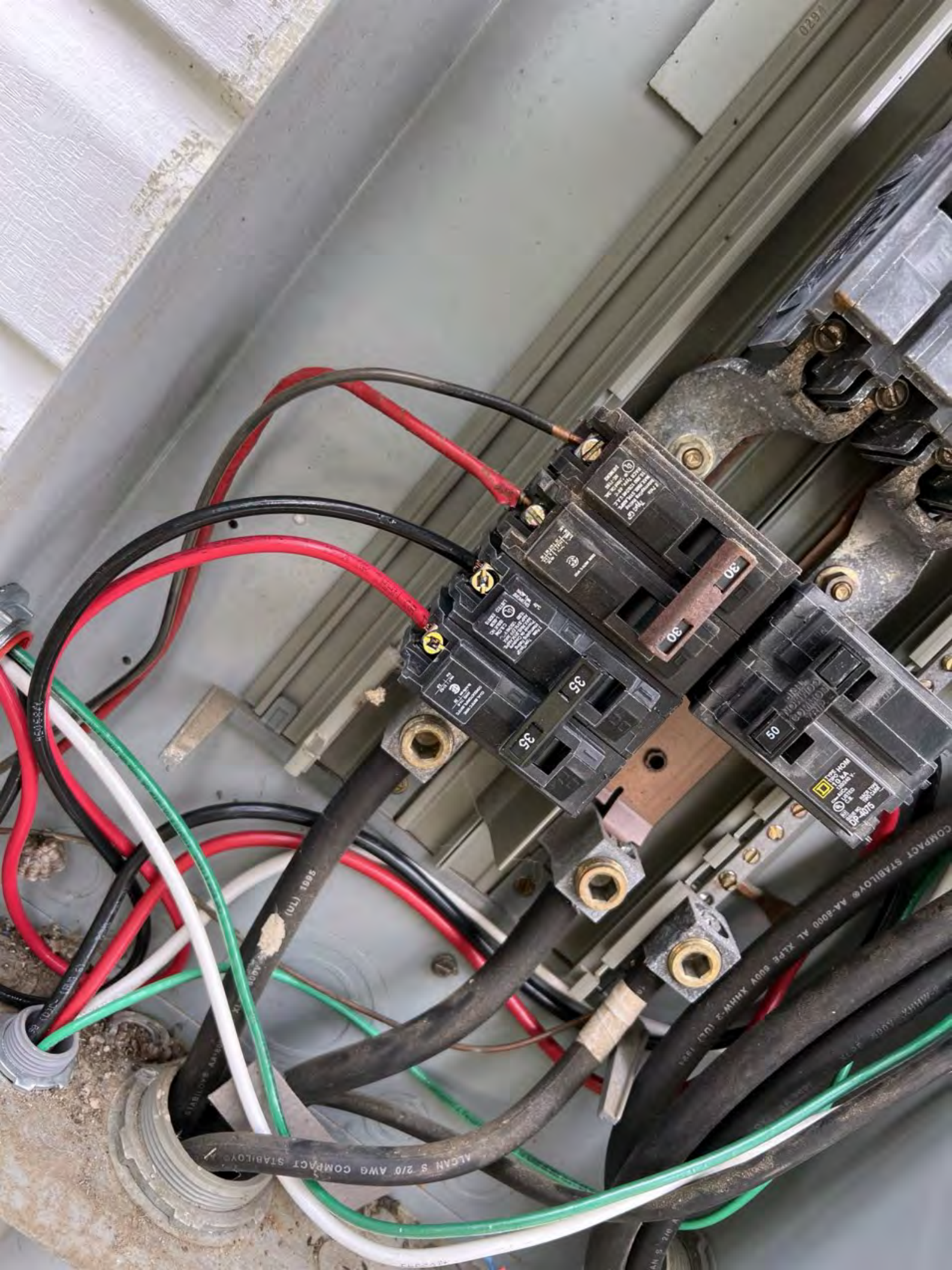
SOLAR PV BREAKER
BREAKER IS BACKFED
DO NOT RELOCATE



RV.







0291

30

30

35

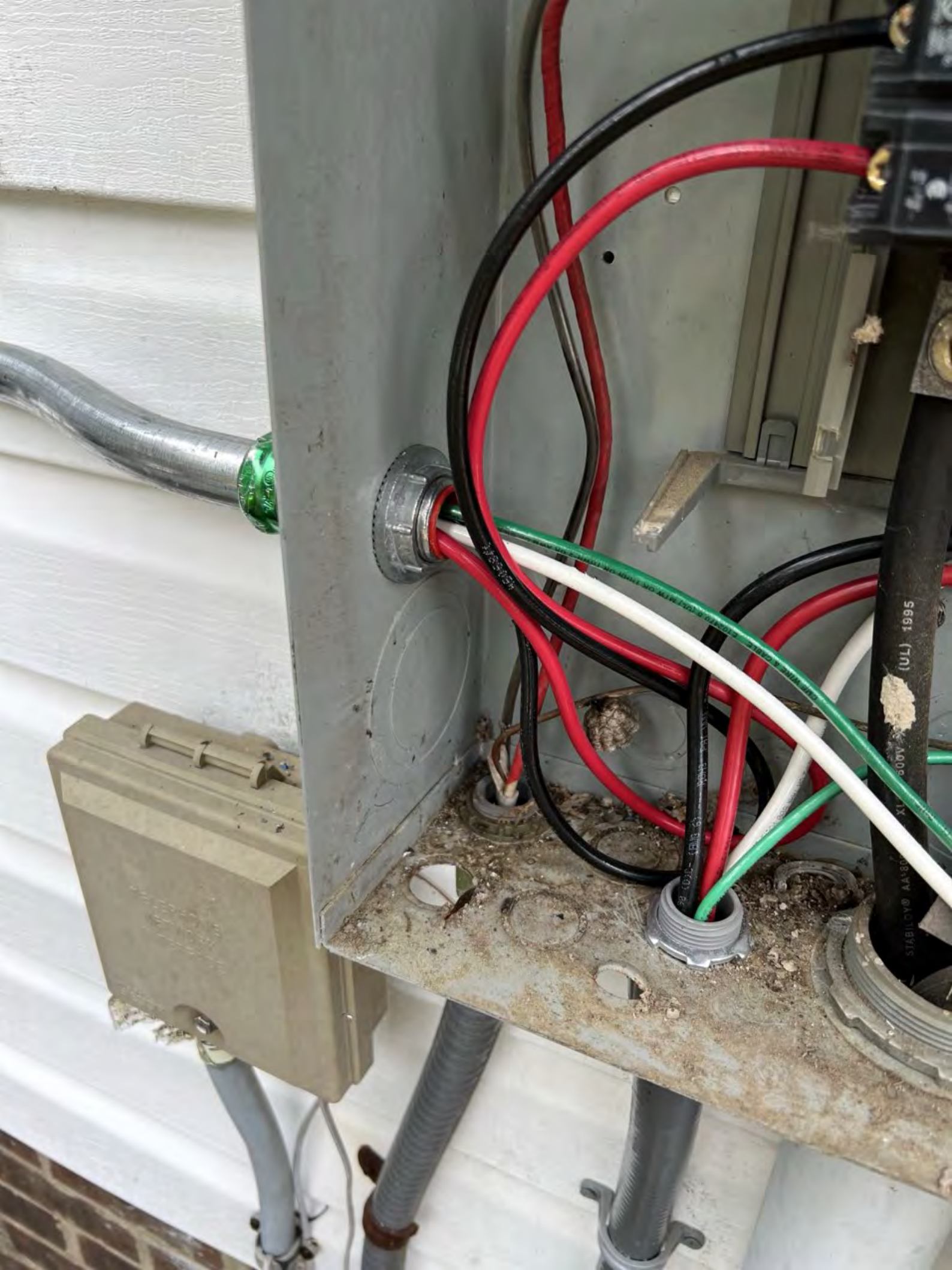
35

05

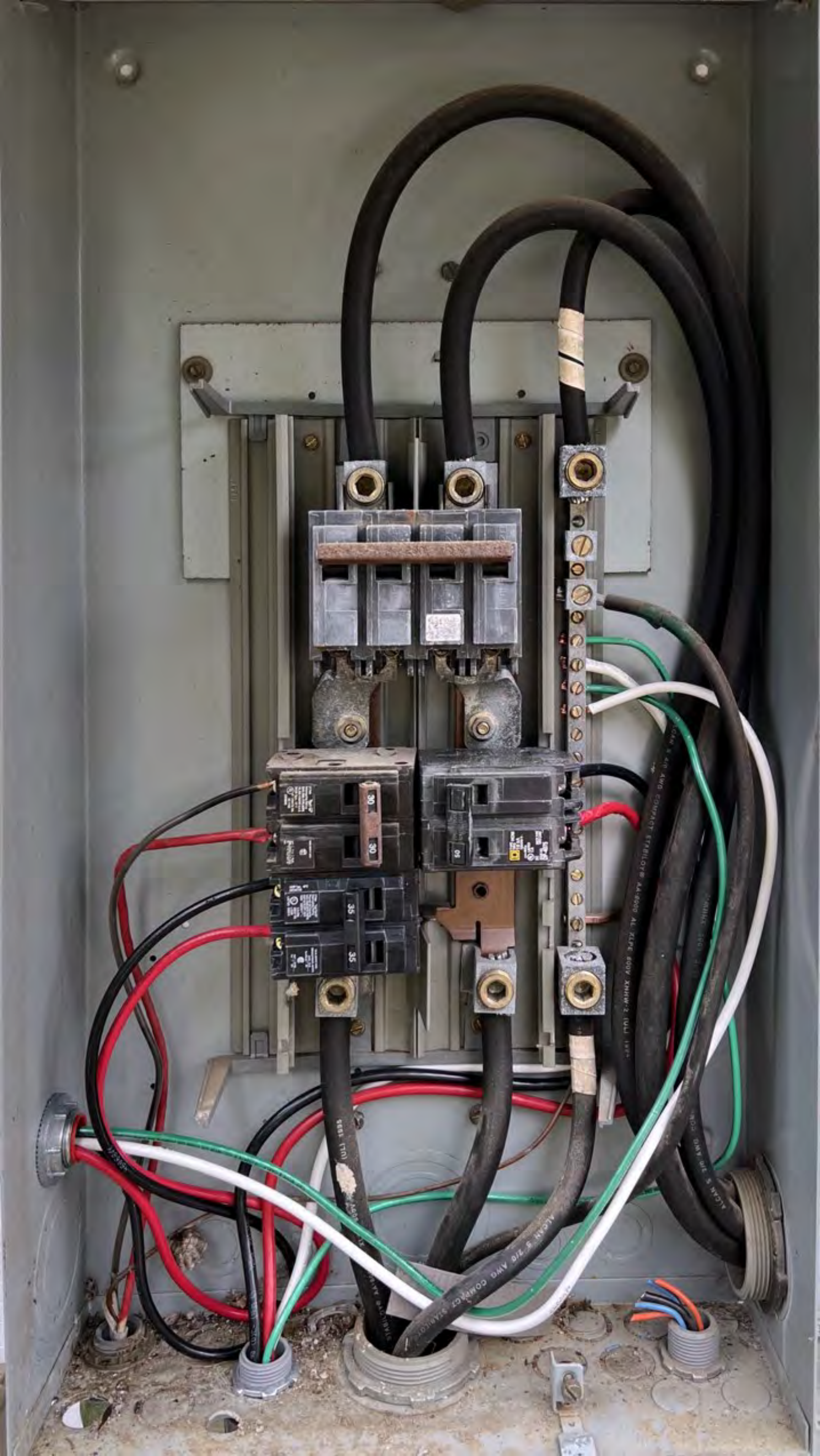
Steel (TN)

ALCAN 9 2/0 AWG COMPACT STABLOYE

COMPACT STABLOYE AA-2000 AL XLPE 600V XHHW-2 (UL) 1824



STABLOYD AA180 XI 500V (UL) 1995



⚠ DANGER
Hazardous Voltage. Will cause death or serious injury.
• Do not open this shield unless the power supplying this switch is OFF.
• Snap shield to closed position before turning power ON.

The image shows a metal terminal block with two red circuit breakers and two thermal relays. The relays are labeled "TR35R 35A 250V AC". Wires of various colors (red, black, white, green) are connected to the terminals. The relays are mounted on a metal base with screws. The circuit breakers are mounted on top of the relays. The entire assembly is housed in a metal enclosure.

TR35R

TR35R
35A
250V AC

TR35R
35A
250V AC

solar

The SolarEdge inverter is listed below (the "Product")

- Power output of the inverter
- Mounting system shipping weight and mounting hardware
- Investment cost
- Safety instructions shipped with the product
- * In some regions
- StorEdge smart interface
- ZigBee Gateway Charger (North America) for installation of the product
- SolarEdge EV Charger (North America) for installation of the product

The Limited Warranty does not cover fuses, fans, wires and other accessories. For more details, see the datasheet for more details. It is recommended that you read the datasheet for more details.

A complete copy of the warranty is available at [warranty-april-2022.pdf](#)

If you prefer a printed copy of the warranty to be sent to you, please contact support@solaredge.com or call our support center and we will gladly provide.

solar **edge**

Welcome to the SolarEdge family!

To ensure the best support for your SolarEdge device, register your warranty.

It's simple. Just enter your device serial number (S/N) at: solaredge.com/register

DEVICE S/N:

SV3223-0750ADE7D-DA
[Barcode]

[Barcode]
MAN-01-00533-1.2

REGISTER YOUR WARRANTY

MAN-PKG-00079
REV 07
EVE

AS0012-STR-1
REV A
EVE





163

409-754-6015A
8-609/14.5A

IV

5K3323-0180FA210-77

5440-10H48H



PHOTOVOLTAIC MODULE

Modules assembled in the USA from solar cells made in Vietnam

Solar Module Type	JKM395M-72HBL-V
Maximum Power(Pmax)	395W
Power Measurement Tolerance	±3%
Maximum Power Voltage(Vmp)	39.90V
Maximum Power Current(Imp)	9.90A
Open Circuit Voltage(Voc)	48.80V±3%
Short Circuit Current(Isc)	10.54A±4%
Maximum System Voltage	1500VDC
Maximum Overcurrent Protection Rating	20A
Power Sorting	0-+3%
Protection Class	II
Fire Class	Type 1 (UL171730)/Class C (IEC61730)
Weight	22.5(kg)
Dimension	2008×1002×40(mm)
STC:	1000W/m ² AM1.5, 25°C
Current Sorting	1†



See Type 1 See installation instructions for installation requirements to achieve a specified system fire class rating with this product.

For full specifications, see T1 AWG 12 wire only. Validated for a minimum of 0°C.



WARNING

- ONLY qualified personnel should install or perform maintenance work on these modules.
- BE AWARE of dangerous high DC voltage when connecting modules.
- DO NOT damage or scratch the rear surface of the module.
- SEE module literature for appropriate mating connectors.
- DO NOT disconnect the cables or connectors under load.



AVERTISSEMENT

- SEUL les professionnels peuvent installer et maintenir les éléments.
- PRENDRE GARDE de la haute tension continue lorsque les éléments sont connectés.
- IL EST interdit d'endommager ou d'effrayer l'arrière des panneaux.
- VISITEZ les infos produits pour les caractéristiques de l'assemblage appropriées.
- Ne déconnectez pas le câble ou le connecteur sous charge.

†For full specifications see the literature or website or cable route on page 46. T2 AWG wire or minimum of 0°C.

Grid Monitoring Completed. ✕

Pairing: Detecting Optimizers (20)

**solar**edgeSN 750ADE7D-DA ⋮

Status

Inverter

SN 750ADE7D-DA

Summary



Power

2.57 kW



Voltage

250 Vac



Frequency

60 Hz

P_OK: 20 of 20

Optimizers

Communicating

Server Comm. i

S_OK

Cellular

Status

Production

Power Limit

6 kW

Switch is

On

[Disconnect from device](#)



12:49

5G 91

< William Finney



1/1



20/20

Successfully published
on server

Ok



12:49

5G 91

< William Finney



1/1



20/20





1 MVE (pod)

163 Valley Forge
Cameron
NC 28326+

(BACK) way Ni

Way 18. P
314. 284. 18. P
18. P
284. 18. P



184. Arm

km
(Front)

Finney

Valley Forge
28326+

Way N.

Back

18' P
224' Arm

← L





163 Valley Forge Ave 28326+
 William Finney
 7.900 kw (Front)

134.5pm

←L

18. P. 314 Pk M
18. P. 284. Ann



163 Valley Forge way N.
Cameron Nc 28526 +
William Finney
7.900 Kw (Front)

(Back)

18. P. 314 Pk M
18. P. 284. Ann



18. P. 284. Ann

←



163







1530 Center Park Drive
Charlotte, NC 28217

855-997-1213

info@toptiersolarsolutions.com

www.toptiersolarsolutions.com

Installation Authorization

Customer Name: William Finney

Customer Address: 163 Valley Forge Way North, Cameron, NC 28326

I, William Finney, hereby acknowledge that at the time of my solar system installation, the crew lead reviewed the following for my system to which I approve:

The layout and placement of the solar system

The equipment used in the system (i.e., inverter, battery, AC disconnect, backup interface)

William Finney
Customer Signature

5/16/2024
Date





