

**Jinko Solar** Jinko Solar Co., Ltd  
 No. 1, Yongxin Road, Economic Development Zone,  
 Wuxi City, 214102 Jiangsu, P.R. China  
 www.jinkosolar.com

Building Your Trust in Solar

---

**PHOTOVOLTAIC MODULE**  
 Modules assembled in the USA from solar cells made in Vietnam

Solar Module Type	: JKM190M-72HBL-V
Maximum Power(P <sub>max</sub> )	390W
Power Measurement Tolerance	±3%
Maximum Power Voltage (V <sub>mp</sub> )	35.64V
Maximum Power Current(I <sub>mp</sub> )	9.84A
Open Circuit Voltage(V <sub>oc</sub> )	48.60V±3%
Short Circuit Current(I <sub>sc</sub> )	10.46A±4%
Maximum System Voltage	1500VDC
Maximum Discurrent Protection Rating	20A
Power Sorting	0-±3%
Protection Class	II
Fire Class	Type 10(L)E1730/Class C0EC1730
Weight	22.50kg
Dimension	2026×1322×40mm
STC	1000W/m <sup>2</sup> , AM1.5, 25°C
Current Sorting	IT





Fire Type: See installation instructions for installation requirement to achieve a specified system fire class rating with this product.  
 For field connections, use T2 600V Cu wire only, insulated for a minimum of 90°C.

**WARNING**  
 ONLY qualified personnel should install or perform maintenance work on these modules.  
**BE AWARE** of dangerous high DC voltage when connecting modules.  
**DO NOT** damage or scratch the rear surface of the module.  
**DO NOT** disassemble for inappropriate wiring connections.  
**DO NOT** disconnect the cables or connectors under load.

**AVERTISSEMENT**  
 SEUL les professionnels peuvent installer et maintenir les éléments.  
**PRENEZ GARDE** de la haute tension continue lorsque les éléments sont connectés.  
**IL EST INTERDIT** d'endommager ou d'gratifier l'arrière des éléments.  
**NE DÉMONTÉZ PAS** les modules pour les connexions de câblage inappropriées.  
**NE DÉCONNECTÉZ PAS** les câbles ou les connecteurs sous charge.

For installation instructions, see the back of the module.  
 Pour les recommandations de câblage, voir le verso de la cellule solaire.

832101239611000997078

101

ampco  
WARNING: High Voltage  
CAUTION: High Voltage  
UL 1741  
CE  
1000V  
100A  
1000V  
100A  
1000V  
100A







PHOTOVOLTAIC POWER SOURCE

**CAUTION**  
NEVER OPERATE THIS DEVICE THE  
RISK OF ELECTRIC SHOCK. THE  
RISK OF ELECTRIC SHOCK AHEAD TO  
PHOTOVOLTAIC ARRAY IS EXTREMELY  
HIGH. IT IS EXTREMELY DANGEROUS TO  
REPAIR OR MAINTAIN THIS DEVICE.  
DO NOT ATTEMPT TO REPAIR OR  
REPLACE THE DEVICE. CONTACT THE  
INSTALLER FOR SERVICE. CONTACT THE  
INSTALLER FOR SERVICE. CONTACT THE  
INSTALLER FOR SERVICE.

**WARNING** ELECTRIC SHOCK HAZARD THE DC CONDUCTION OF THIS PHOTOVOLTAIC  
SYSTEM ARE UNEXPECTEDLY HIGH AND DANGEROUS.

**AVERTISSEMENT**  
NEVER OPERER ESTERNEZ LE RISK DE  
PHOTOVOLTAIC EST EXTREMEMENT  
HAUT. IL EST EXTREMEMENT DANGEREUX  
REPARER OU ENTRETIENNER CE  
DISPOSITIF. NE PAS TOUCHER, AINSI DE  
REPARER OU ENTRETIENNER CE  
DISPOSITIF. NE PAS TOUCHER, AINSI DE  
REPARER OU ENTRETIENNER CE  
DISPOSITIF. NE PAS TOUCHER, AINSI DE  
REPARER OU ENTRETIENNER CE  
DISPOSITIF.





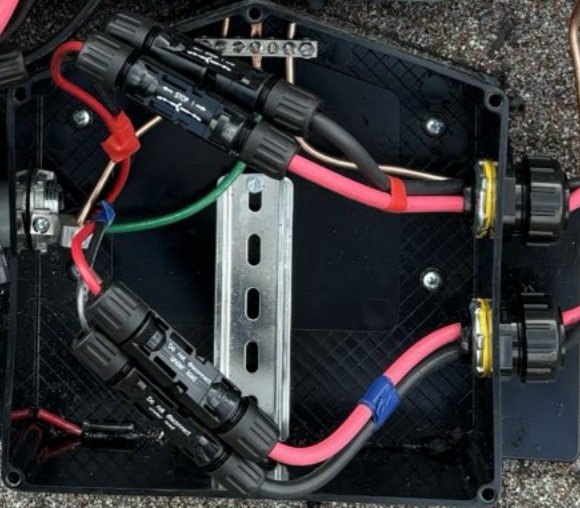
PHOTOVOLTAIC POWER SOURCE

101 Lockwood DR, Cameron, NC 28526

Stephen Pounders

Do Not Remove  
CAUTION  
WARNING  
AVERTISSEMENT

KEEP TO INSTALLATION MANUAL  
REPLACE ONLY BY BATTERY  
REMOVED FOR ALL SERVICES & REPAIRS TO THE  
BATTERY TO IN STANDBY STATE





Switch & Appt. Technology Inc. 118  
Power Systems  
HC

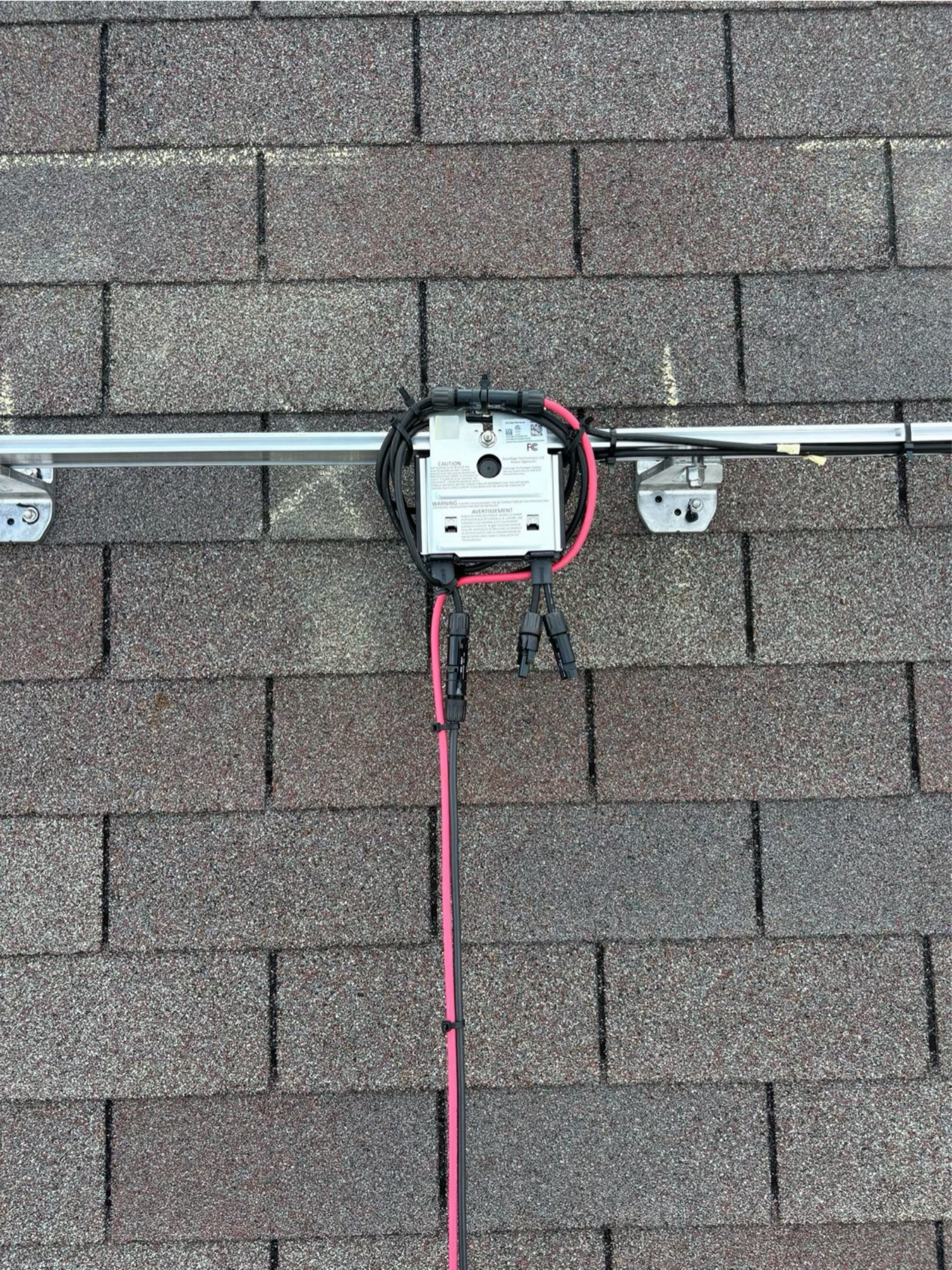
**CAUTION**  
This device is not to be used in the presence of flammable vapors or gases. It is not to be used in the presence of explosive atmospheres. It is not to be used in the presence of high voltage or high current. It is not to be used in the presence of high temperature. It is not to be used in the presence of high humidity. It is not to be used in the presence of high magnetic fields. It is not to be used in the presence of high electromagnetic interference. It is not to be used in the presence of high radio frequency interference. It is not to be used in the presence of high power radio frequency fields. It is not to be used in the presence of high power microwave fields. It is not to be used in the presence of high power laser radiation. It is not to be used in the presence of high power ultrasound. It is not to be used in the presence of high power vibration. It is not to be used in the presence of high power shock. It is not to be used in the presence of high power impact. It is not to be used in the presence of high power crushing. It is not to be used in the presence of high power cutting. It is not to be used in the presence of high power drilling. It is not to be used in the presence of high power grinding. It is not to be used in the presence of high power sanding. It is not to be used in the presence of high power polishing. It is not to be used in the presence of high power buffing. It is not to be used in the presence of high power abrading. It is not to be used in the presence of high power sandblasting. It is not to be used in the presence of high power waterjetting. It is not to be used in the presence of high power ultrasonic cleaning. It is not to be used in the presence of high power ultrasonic welding. It is not to be used in the presence of high power ultrasonic cutting. It is not to be used in the presence of high power ultrasonic grinding. It is not to be used in the presence of high power ultrasonic sanding. It is not to be used in the presence of high power ultrasonic polishing. It is not to be used in the presence of high power ultrasonic buffing. It is not to be used in the presence of high power ultrasonic abrading. It is not to be used in the presence of high power ultrasonic sandblasting. It is not to be used in the presence of high power ultrasonic waterjetting. It is not to be used in the presence of high power ultrasonic ultrasonic cleaning. It is not to be used in the presence of high power ultrasonic ultrasonic welding. It is not to be used in the presence of high power ultrasonic ultrasonic cutting. It is not to be used in the presence of high power ultrasonic ultrasonic grinding. It is not to be used in the presence of high power ultrasonic ultrasonic sanding. It is not to be used in the presence of high power ultrasonic ultrasonic polishing. It is not to be used in the presence of high power ultrasonic ultrasonic buffing. It is not to be used in the presence of high power ultrasonic ultrasonic abrading. It is not to be used in the presence of high power ultrasonic ultrasonic sandblasting. It is not to be used in the presence of high power ultrasonic ultrasonic waterjetting.

**WARNING** ELECTRIC SHOCK HAZARD. THE DC CIRCUITRY OF THIS PRODUCT HAS 120VDC AND UNGROUNDABLE AND MUST BE INSTALLED BY A QUALIFIED ELECTRICIAN.

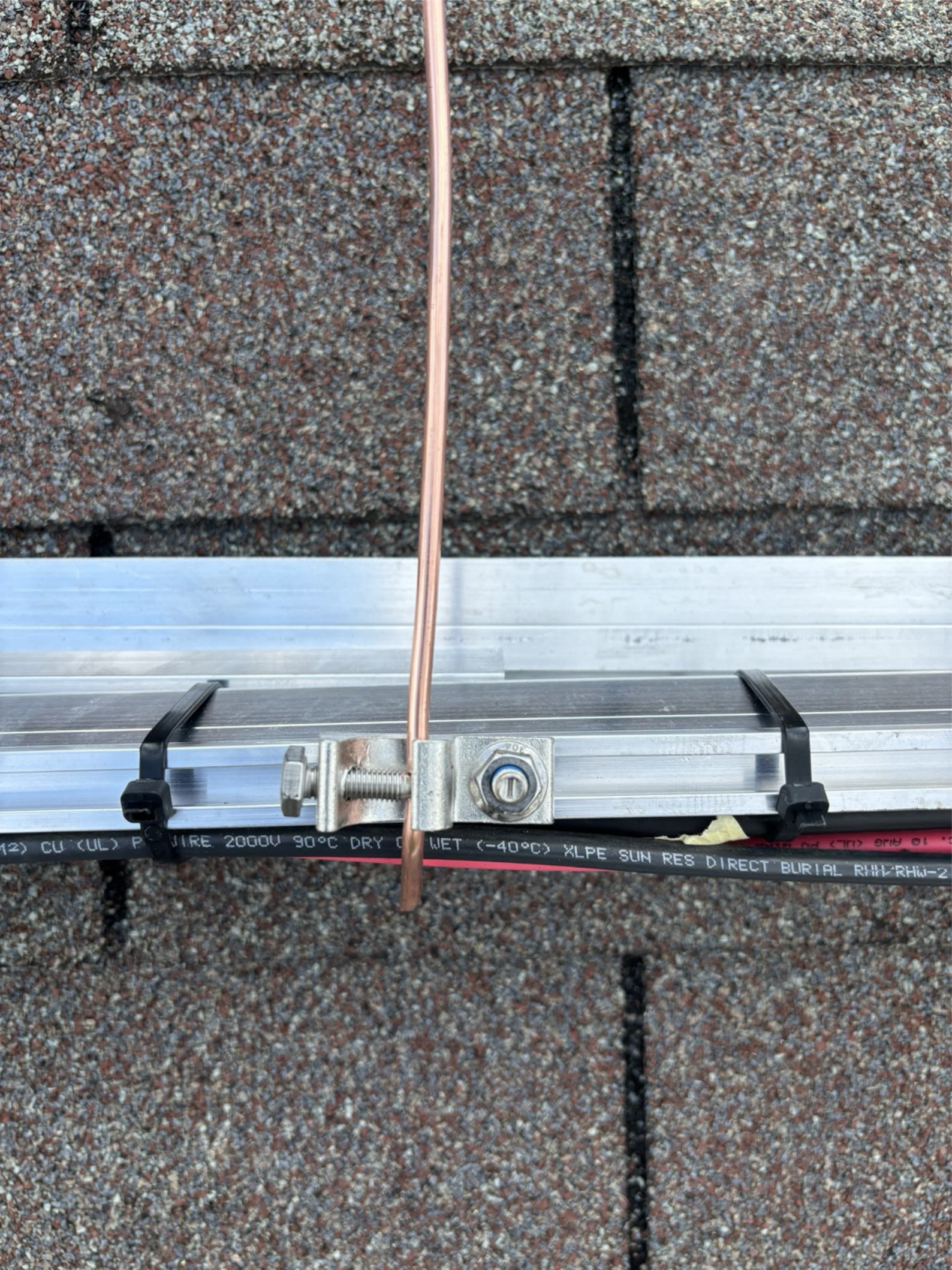
**AVERTISSEMENT**  
RISQUE DE CHOC ÉLECTRIQUE. LE CIRCUIT À COURANT CONTINU DE CE PRODUIT A 120VDC ET NE PEUT ÊTRE DÉTACHÉ D'UN GROUPEMENT ÉLECTRIQUE. IL DOIT ÊTRE INSTALLÉ PAR UN ÉLECTRICIEN QUALIFIÉ.

CAUTION: ELECTRIC SHOCK HAZARD. THE DC CIRCUITRY OF THIS PRODUCT HAS 120VDC AND UNGROUNDABLE AND MUST BE INSTALLED BY A QUALIFIED ELECTRICIAN.

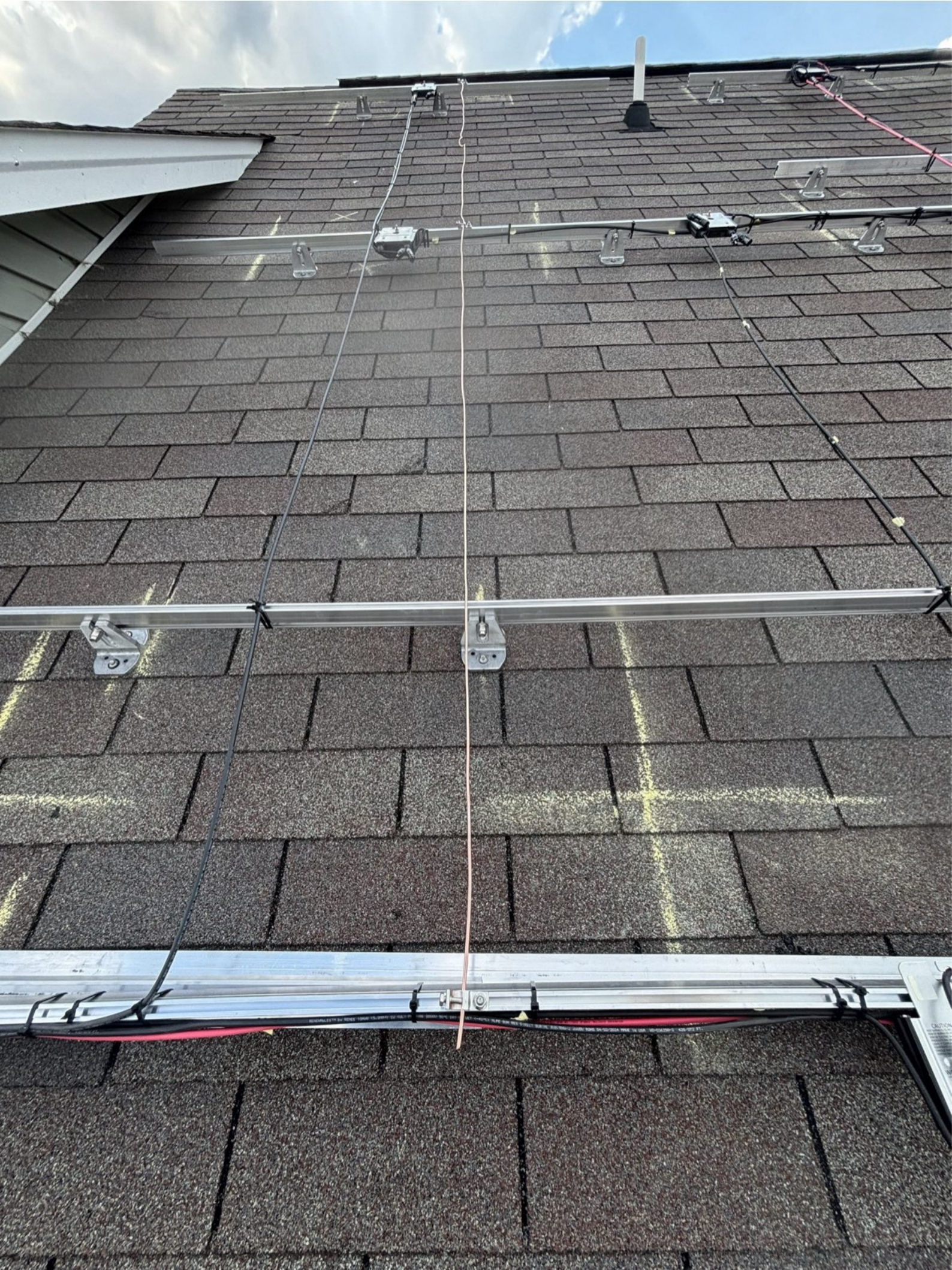
AVERTISSEMENT: RISQUE DE CHOC ÉLECTRIQUE. LE CIRCUIT À COURANT CONTINU DE CE PRODUIT A 120VDC ET NE PEUT ÊTRE DÉTACHÉ D'UN GROUPEMENT ÉLECTRIQUE. IL DOIT ÊTRE INSTALLÉ PAR UN ÉLECTRICIEN QUALIFIÉ.



CAUTION  
WARNING  
AVERTISSEMENT



12) CU (UL) P WIRE 2000V 90°C DRY C (NET (-40°C) XLPE SUN RES DIRECT BURIAL RHH/RHW-2





CAUTION  
DO NOT TOUCH THE WIRING OR ELECTRICAL COMPONENTS OF THIS PHOTOVOLTAIC INVERTER. CONTACT WITH THE WIRING OR ELECTRICAL COMPONENTS OF THIS PHOTOVOLTAIC INVERTER CAN CAUSE SEVERE BURNS OR DEATH.  
DO NOT TOUCH THE WIRING OR ELECTRICAL COMPONENTS OF THIS PHOTOVOLTAIC INVERTER. CONTACT WITH THE WIRING OR ELECTRICAL COMPONENTS OF THIS PHOTOVOLTAIC INVERTER CAN CAUSE SEVERE BURNS OR DEATH.

**CAUTION**  
DO NOT TOUCH THE WIRING OR ELECTRICAL COMPONENTS OF THIS PHOTOVOLTAIC INVERTER. CONTACT WITH THE WIRING OR ELECTRICAL COMPONENTS OF THIS PHOTOVOLTAIC INVERTER CAN CAUSE SEVERE BURNS OR DEATH.  
DO NOT TOUCH THE WIRING OR ELECTRICAL COMPONENTS OF THIS PHOTOVOLTAIC INVERTER. CONTACT WITH THE WIRING OR ELECTRICAL COMPONENTS OF THIS PHOTOVOLTAIC INVERTER CAN CAUSE SEVERE BURNS OR DEATH.

**WARNING**  
DO NOT TOUCH THE WIRING OR ELECTRICAL COMPONENTS OF THIS PHOTOVOLTAIC INVERTER. CONTACT WITH THE WIRING OR ELECTRICAL COMPONENTS OF THIS PHOTOVOLTAIC INVERTER CAN CAUSE SEVERE BURNS OR DEATH.  
DO NOT TOUCH THE WIRING OR ELECTRICAL COMPONENTS OF THIS PHOTOVOLTAIC INVERTER. CONTACT WITH THE WIRING OR ELECTRICAL COMPONENTS OF THIS PHOTOVOLTAIC INVERTER CAN CAUSE SEVERE BURNS OR DEATH.

**AVERTISSEMENT**  
NE PAS TOUCHER LE CÂBLAGE OU LES COMPOSANTS ÉLECTRIQUES DE CETTE ONDULEUSE PHOTOVOLTAÏQUE. LE CONTACT AVEC LE CÂBLAGE OU LES COMPOSANTS ÉLECTRIQUES DE CETTE ONDULEUSE PHOTOVOLTAÏQUE PEUT CAUSER DE GRAVES BRÛLURES OU LA MORT.  
NE PAS TOUCHER LE CÂBLAGE OU LES COMPOSANTS ÉLECTRIQUES DE CETTE ONDULEUSE PHOTOVOLTAÏQUE. LE CONTACT AVEC LE CÂBLAGE OU LES COMPOSANTS ÉLECTRIQUES DE CETTE ONDULEUSE PHOTOVOLTAÏQUE PEUT CAUSER DE GRAVES BRÛLURES OU LA MORT.

**CAUTION**  
HOT SURFACES: TO AVOID THE RISK OF BURNS, DO NOT TOUCH PHOTOVOLTAIC ARRAY IS EXPOSED TO LIGHT. IT SUPPLIES A DC VOLTAGE TO EQUIPMENT COVER BY MODULE WITH DURING FAULT, ZERO-CURRENT IS SOURCED INTO DC ARRAY BY CONVERTER.

SolarEdge Technologies Ltd.  
Power Optimizer  
SolarEdge Technologies GmbH/  
Werner-Schott-Strasse 5/81829  
Munich/Germany

**WARNING** ELECTRIC SHOCK HAZARD. THE DC CONDUCTORS OF THIS PHOTOVOLTAIC SYSTEM ARE UNGROUNDED AND MAY BE ENERGIZED.



**AVERTISSEMENT**  
RISQUE DE CHOC ELECTRIQUE: QUAND LE CHAMP PHOTOVOLTAIQUE EST EXPOSE A LA LUMIERE, UNE TENSION CC EST FOURNIE A CET EQUIPEMENT. SURFACES CHAUDES: NE PAS TOUCHER, AFIN DE REDUIRE LES RISQUES DE BRULURES LE COURANT DE RETOUR INJECTE PAR LE CONVERTISSEUR EN CAS DE DEFAILLANCE DANS LE MODULE PV EST TOUJOURS NUL.



STRING

440W/5-60V/15A  
8-60V/14.5A  
1V  
NA03 ST2623-018835245-32  
Israel S440-1GM4MRM



MODULE

G 105°C P

Do Not Remove

18835245-32



Intertek  
4004590



Solaredge Technologies Ltd.  
Solaredge Technologies GmbH/  
Werner-Eckert-Straße 6/81829 Munich/Germany



## CAUTION

HOT SURFACES-TO REDUCE THE RISK OF BURNS-DO NOT TOUCH.  
RISK OF ELECTRIC SHOCK-WHEN THE PHOTOVOLTAIC ARRAY IS EXPOSED TO LIGHT, IT SUPPLIES A DC VOLTAGE TO EQUIPMENT. COVER PV MODULE WITH OPAQUE MATERIAL BEFORE CONNECTING OR DISCONNECTING THIS OPTIMIZER.  
DURING FAULT, ZERO CURRENT IS SOURCED INTO DC ARRAY BY CONVERTER.

SolarEdge Technologies Ltd.  
Power Optimizer

Solaredge Technologies GmbH/  
Werner-Eckert-Straße 6/81829  
Munich/Germany

**WARNING** ELECTRIC SHOCK HAZARD. THE DC CONDUCTORS OF THIS PHOTOVOLTAIC SYSTEM ARE UNGROUNDED AND MAY BE ENERGIZED.

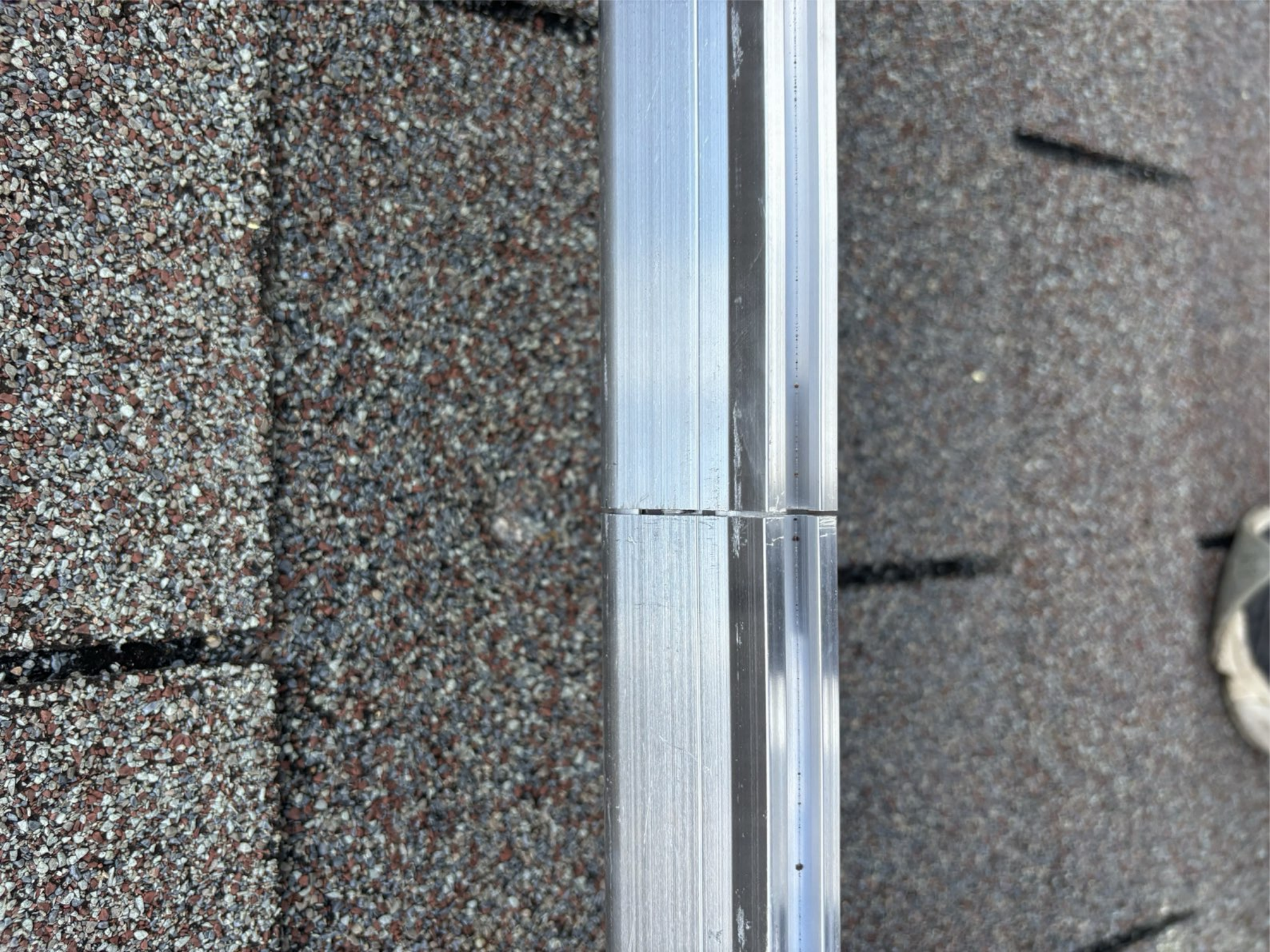
## AVERTISSEMENT

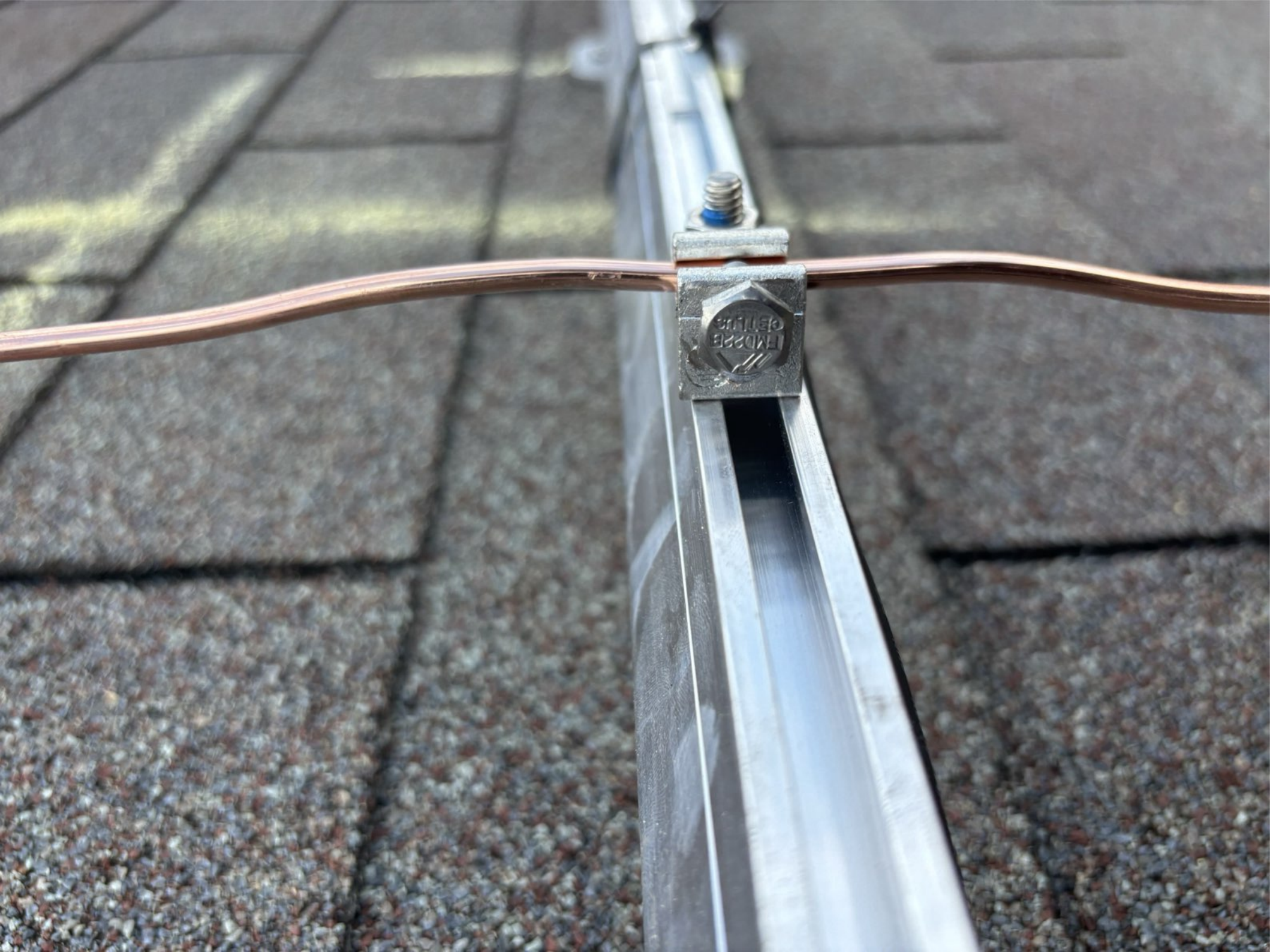
RISQUE DE CHOC ELECTRIQUE: QUAND LE CHAMP PHOTOVOLTAIQUE EST EXPOSE A LA LUMIERE, UNE TENSION CC EST FOURNIE A CET EQUIPEMENT.  
SURFACES CHAUDES: NE PAS TOUCHER, AFIN DE REDUIRE LES RISQUES DE BRULURES LE COURANT DE RETOUR INJECTE PAR LE CONVERTISSEUR EN CAS DE DEFAILLANCE DANS LE MODULE PV EST TOUJOURS NUL.















**KLEIN TOOLS**  
CL800

Hz % °F °C LoZ

Ω

A

NCV

OFF

RANGE

MAX/MIN

SEL

ZERO

6000 Counts Digital Clamp Meter

11.15

**True RMS TOUGH METER**

CAT III 1000V  
CAT IV 600V

COM

V Ω

Hz % Temp

CONNECT  
POWER SOURCE

ON

CAUTION

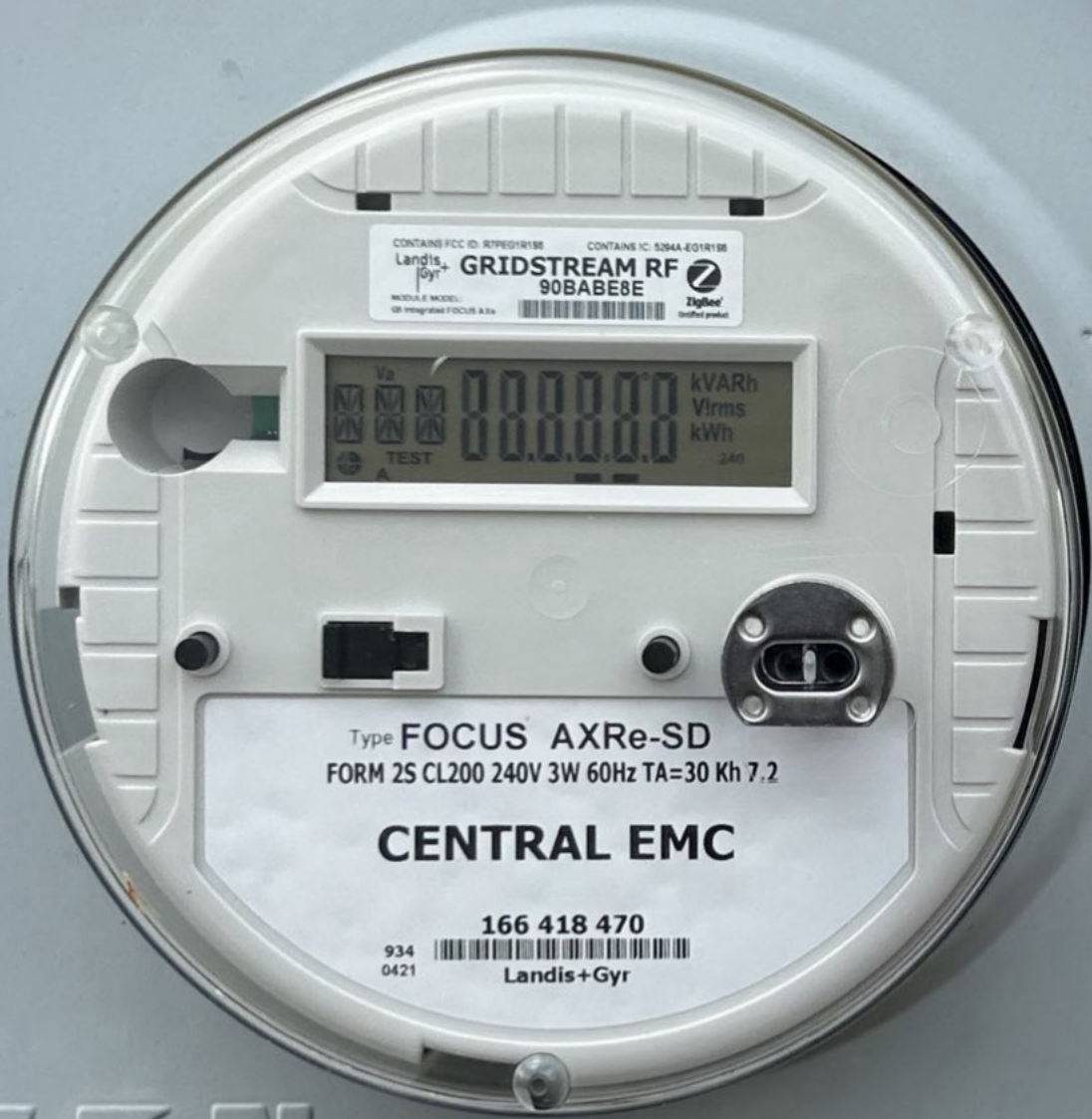
WARNING

TERMINALS ON THE LINE  
L-247 SHOULD BE CHANGED  
IN THE OPEN POSITION

OFF

PHOTOVOLTAIC  
SYSTEM kWh METER

TERMINATORS  
Road - Fayetteville  
1-800-1450



CONTAINS FCC ID: R7P601R186    CONTAINS IC: 52944-E01R186  
**Landis+Gyr** **GRIDSTREAM RF** **ZigBee**  
**90BABEBE**  
MODEL & MODEL:    Integrated FOCUS A.2x    ZigBee  
certified product

V<sub>a</sub>    kWh  
V<sub>rms</sub>    000000    kVARh  
TEST    240

Type **FOCUS AXRe-SD**  
FORM 2S CL200 240V 3W 60Hz TA=30 Kh 7.2

**CENTRAL EMC**

934    166 418 470  
0421    Landis+Gyr

**EATON**

Hand icon and small text at the bottom right corner.

# SIEMENS

**AC DISCONNECT  
PHOTOVOLTAIC SYSTEM  
POWER SOURCE**

RATED AC OUTPUT CURRENT **32** AMPS  
NOMINAL OPERATING AC VOLTAGE **240** VOLTS

**CAUTION:**  
MULTIPLE SOURCES OF POWER  
THE SERVICE DISCONNECT IS LOCATED  
INSIDE OPPOSITE THE UTILITY METER

**ON**

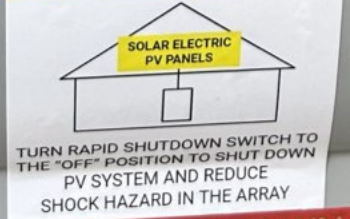
**Heavy Duty  
Safety Switch**  
60A 240VAC, 250VDC  
Horsepower Rated

**OFF**

**⚠ DANGER**  
Hazardous Voltage  
Will cause death or  
serious injury.  
Turn off before replacing  
any fuse. Disconnect  
power before working on  
this switch. Close cover  
before turning power on.

**⚠ WARNING**  
ELECTRIC SHOCK HAZARD  
TERMINALS ON THE LINE AND  
LOAD SIDES MAY BE ENERGIZED  
IN THE OPEN POSITION

**SOLAR PV SYSTEM  
EQUIPPED WITH  
RAPID SHUTDOWN**



**RAPID SHUTDOWN  
SWITCH FOR  
SOLAR PV SYSTEM**





PHOTOVOLTAIC SYSTEM kWh METER


PHOTOVOLTAIC SYSTEM kWh METER  
EATON  
CENTRAL EMC

solarEdge  
Made in USA

OFF ON  
DC DISCONNECT  
solarEdge

SIEMENS  
AC DISCONNECT  
POWER SOURCE  
ON OFF  
Heavy Duty Safety Switch  
EQUIPPED WITH RAPID SHUTDOWN  
RAPID SHUTDOWN SWITCH FOR SOLAR PV SYSTEM

solar**edge**

Made in USA   
from imported parts

P I O

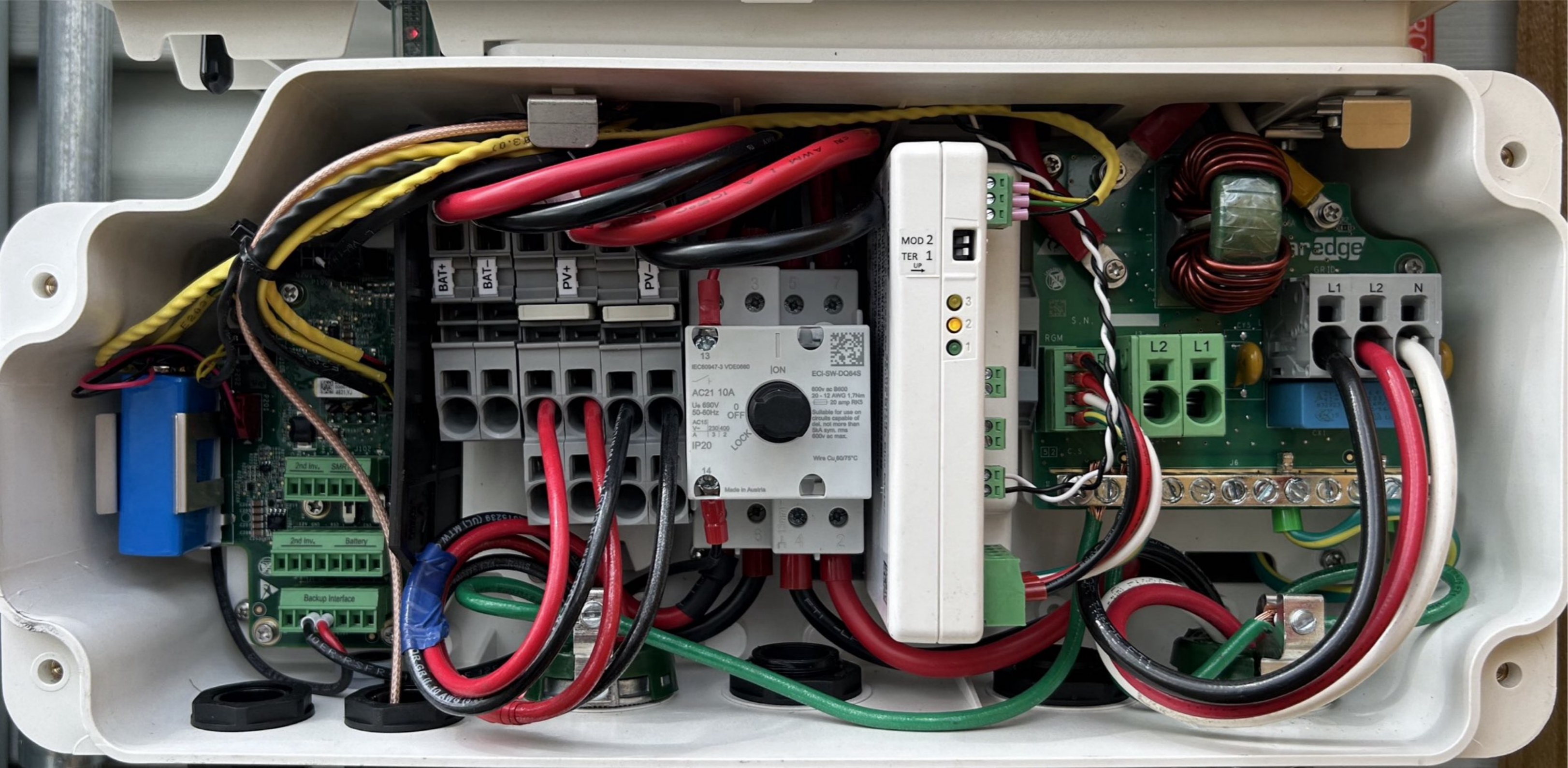
ON

OFF



DC DISCONNECT

solar**edge**







PHOTOVOLTAIC POWER SOURCE













61 62 63 64 65 66 67 68 69 70 71 72 73





UL LISTED  
3/4" COVER  
T1

MADE IN USA From Imported Parts

PATENT MARKING NOTICE: SEE [www.solaredge.com/groups/patent](http://www.solaredge.com/groups/patent)

including interference that may cause undesired operation.

(ii.) this device must accept any interference received,

(i.) this device may not cause harmful interference.

with Part 15 of the FCC Rules. Operation is subject to the following two conditions:  
Contains FCC ID: 2AGPT-PLNX, IC: 20918-PLNX, The enclosed device complies

CSA C22.3 No. 9 - Supplemental.

No. 9 - Basic" or "Grid Support Interactive Inverter -

Grid Support Interactive Inverter - CSA C22.3

C22.2 NO 107

CAN/CSA

CERTIFIED TO

ANSI/UL 1741

CONFORMS TO

ETL LISTED



**solaredge**



us

Intertek

4004290

750844A6-C7



# SolarEdge SE7600H - US

Grid Support Utility Interactive Non - Isolated  
 Photovoltaic Inverter With stand - alone Mode

Operating Voltage Range	270 - 480 Vdc
Max Input Current	31 Adc
Max Continuous Output Power Grid connected	7600Wac @ 240V
Max Continuous Output Power and Current stand - alone	<input type="checkbox"/> 7.6 KVA 32A <input type="checkbox"/> 11.4 KVA 48A
Voltage Min - Nom - Max	211 - 240 - 284 Vdc
Max stand - alone Capacity	11.4 KVA
Max Continuous Output Current Grid Connected	32Aac
Max Output Fault Current	74 Aac
Max Utility Backfeed Current	0 Aac
Frequency Min - Nom - Max	59.3 - 60.0 - 60.5 Hz
Output Power Factor	+/- 0.88 - 1
Max Ambient Temperature	60 C
Enclosure	IP65/NEMA 4X

Type 1 Photovoltaic Arc - Fault Circuit - Protection  
 With integrated ground fault protection per NEC 690.38 (C)

# SIEMENS

**AC DISCONNECT  
PHOTOVOLTAIC SYSTEM  
POWER SOURCE**

RATED AC OUTPUT CURRENT **32** AMPS  
NOMINAL OPERATING AC VOLTAGE **240** VOLTS

**CAUTION:**  
MULTIPLE SOURCES OF POWER  
THE SERVICE DISCONNECT IS LOCATED  
INSIDE OPPOSITE THE UTILITY METER

**ON**

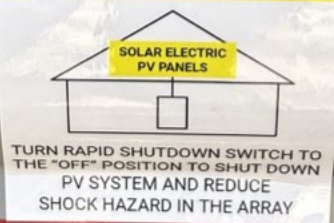
**Heavy Duty  
Safety Switch**  
60A 240VAC, 250VDC  
Horsepower Rated

**⚠ DANGER**  
Hazardous Voltage.  
Will cause death or  
serious injury.  
Turn off before replacing  
any fuse. Disconnect  
power before working on  
this switch. Close cover  
before turning power on.

**OFF**

**WARNING**  
ELECTRIC SHOCK HAZARD  
TERMINALS ON THE LINE AND  
LOAD SIDES MAY BE ENERGIZED  
IN THE OPEN POSITION

**SOLAR PV SYSTEM  
EQUIPPED WITH  
RAPID SHUTDOWN**



**RAPID SHUTDOWN  
SWITCH FOR  
SOLAR PV SYSTEM**

**⚠ WARNING**

DUAL POWER SUPPLY

SOURCES: UTILITY GRID  
AND PV SOLAR  
ELECTRIC SYSTEM

**⚠ WARNING**

POWER SOURCE  
OUTPUT CONNECTION  
DO NOT RELOCATE THIS  
OVERCURRENT DEVICE

**CAUTION:**

MULTIPLE SOURCES OF POWER  
THE PV DISCONNECT IS LOCATED  
BESIDE THE SERVICE METER

**RAPID SHUTDOWN  
SWITCH FOR  
SOLAR PV SYSTEM**

**⚡ CAUTION ⚡**

SOLAR ELECTRIC SYSTEM CONNECTED







**SOLAR PV BREAKER**  
**BREAKER IS BACKFED**  
**DO NOT RELOCATE**

**WARNING** Este equipo es fabricado y probado por Square D y supera los niveles de seguridad establecidos por UL para dispositivos automáticos (UL 981). El uso de interruptores de otro fabricante puede afectar negativamente la seguridad y la confiabilidad del equipo. Square D no asume la responsabilidad de lesiones o funcionamiento inadecuado por cualquier tiempo causado por el uso o desuso de dispositivos automáticos que no sean de Square D.

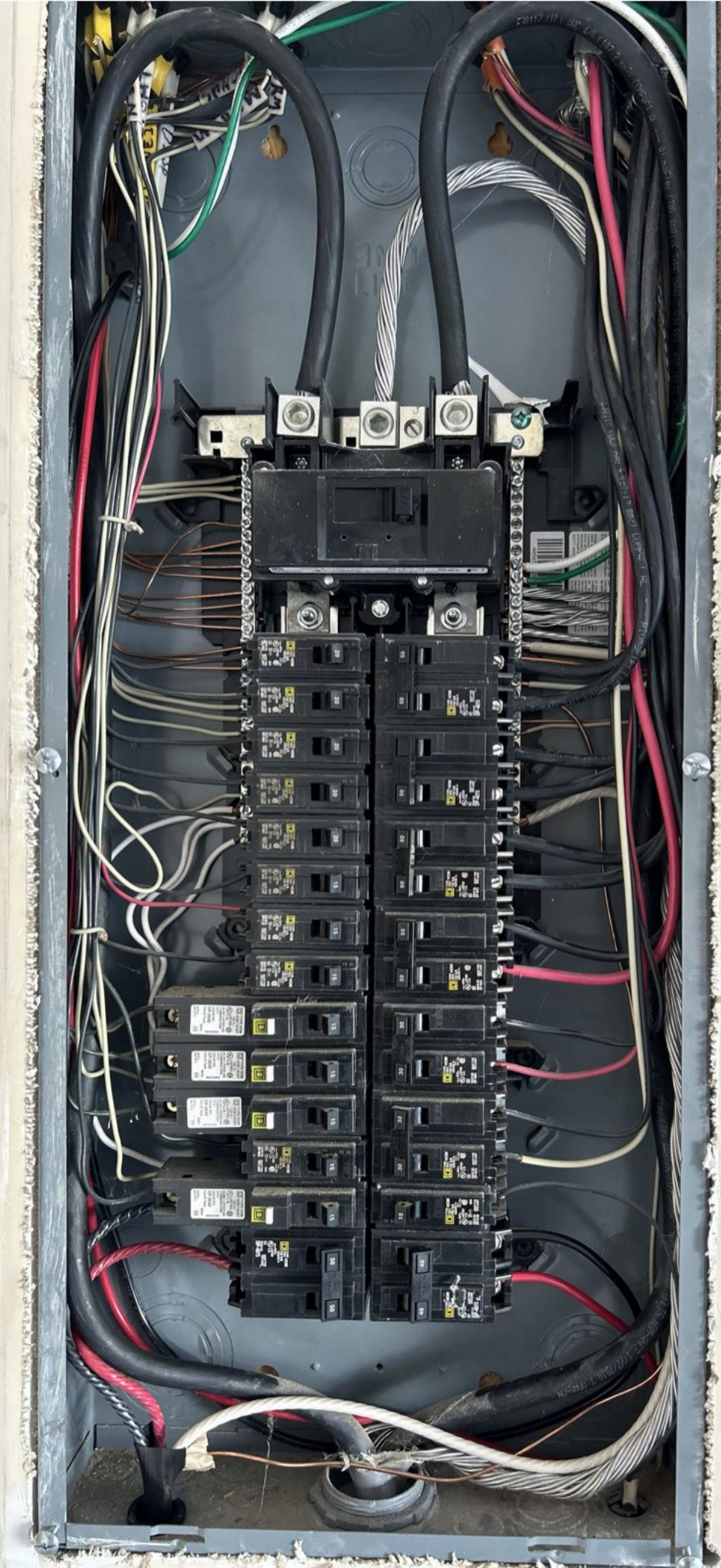
**AVERTISSEMENT** Cet appareil est conçu et vérifié par Square D & les niveaux de sécurité établis par UL pour les dispositifs automatiques (UL 981). L'utilisation d'interrupteurs d'autres fabricants peut affecter négativement la sécurité et la fiabilité du matériel. Square D ne se porte pas responsable pour tout dommage ou mauvais fonctionnement qui résulterait de l'utilisation de dispositifs automatiques autres que Square D.

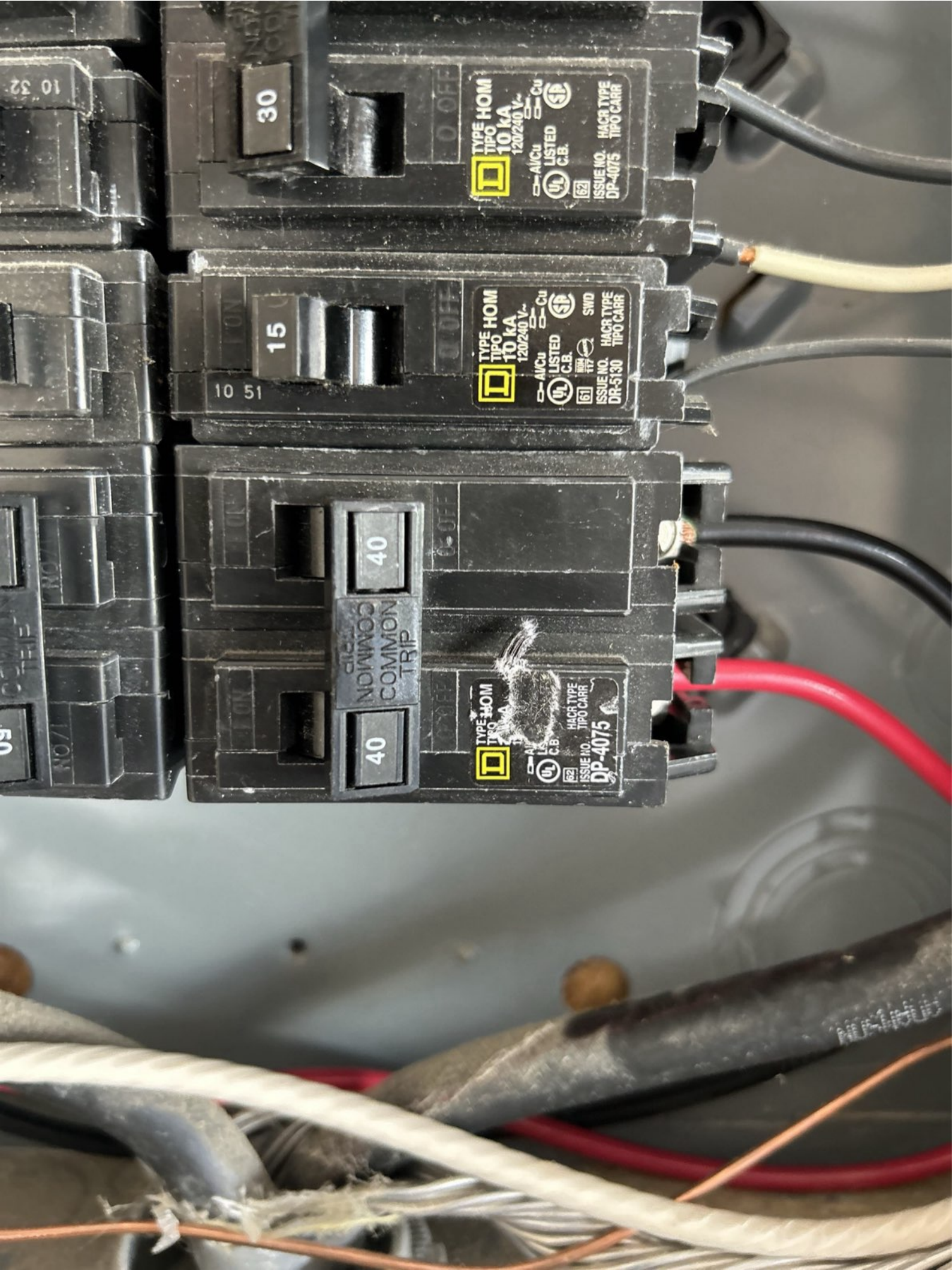
20	Bedroom	20	Dryer
21	Bedrooms	22	Water
23	Lights	24	Heater
25	Den car	26	Garage tartsided
27	charger	28	<del>car</del> SOLAR
29	car charger	30	SOLAR

TI (CHINA)  
119000

GROUP  
BANK







10 32

30

OFF

TYPE HOM  
TIPO  
10 kA  
120/240 V-  
Cu  
UL LISTED  
C.B.  
HACR TYPE  
TIPO CARR  
ISSUE NO.  
DP-4075

15

10 51

OFF

TYPE HOM  
TIPO  
10 kA  
120/240 V-  
Cu  
UL LISTED  
C.B.  
HACR TYPE  
TIPO CARR  
ISSUE NO.  
DR-5130

40

OFF

COMMON  
TRIP

TYPE HOM  
TIPO  
10 kA  
120/240 V-  
Cu  
UL LISTED  
C.B.  
HACR TYPE  
TIPO CARR  
ISSUE NO.  
DP-4075

40

50

TRIP

TRIP

TRIP

TRIP

TRIP

TRIP

TRIP

TRIP

TRIP

TRIP

100-100



