





ENPHASE.

IQ Combiner 4
Photovoltaic
Combiner Box
X2-IQ-AM1-240-4
IEEE1547:2018 COMPLIANT

UL
CERTIFIED
SAFETY LISTING
SECURITY LISTING
E341166

Electrical ratings

Voltage 240VAC, 60Hz
 DG Breakers 80A MAX (combined)
 DG Inputs 64A MAX (combined)
 Output 65A MAX, 90A MAX feeder OCPD
 Temperature 46°C MAX ambient
 For DG breaker, use only Eaton BR series.

202336010474

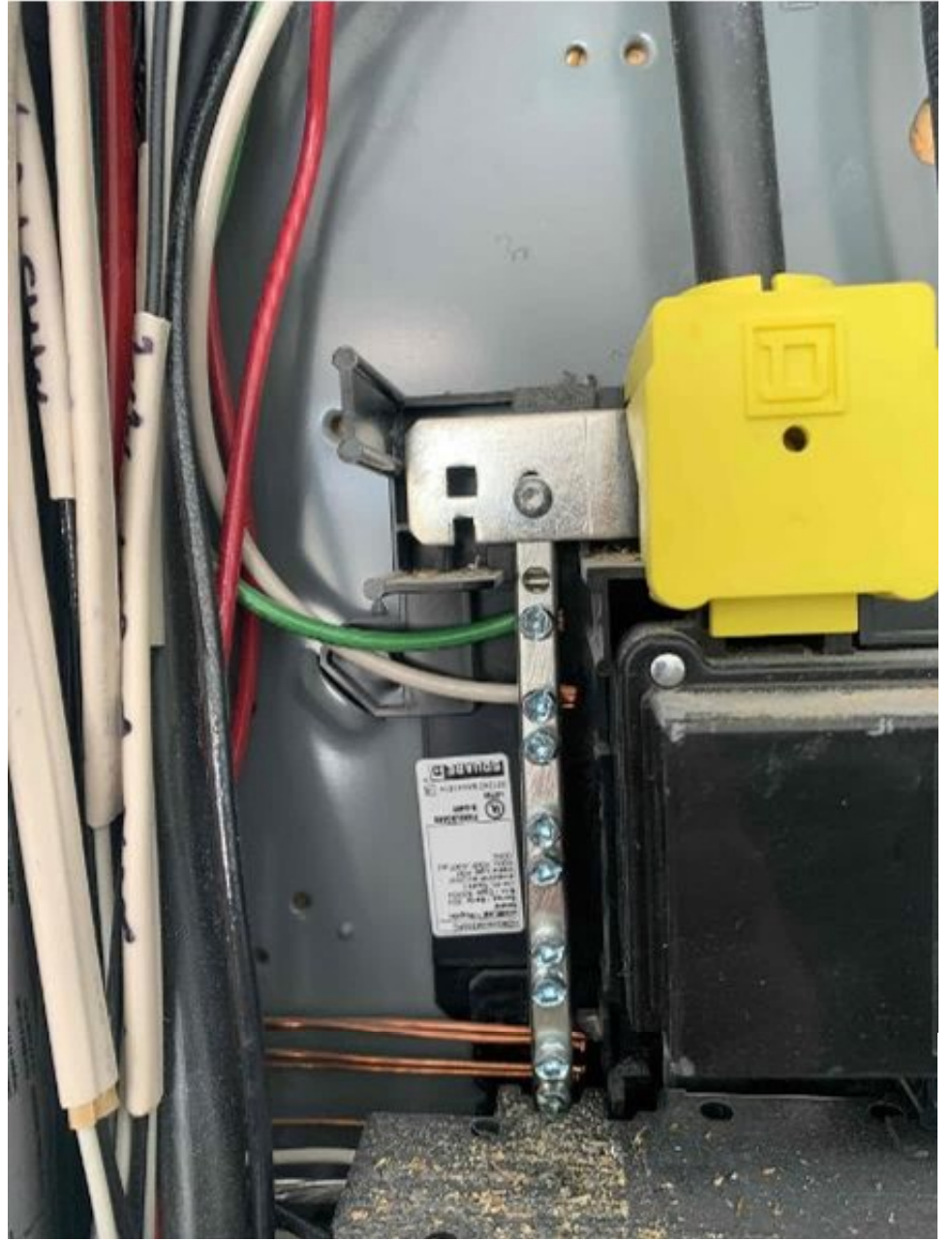
S/N: **202336010474** P/N: **883-00353 16 9518**

Dedicated solar and DG Combiner Box - do not add loads
 10 AMP or 15 AMP IQ Gateway Breaker not used for backfeed

Connection	Wire sizes	Torque	
DG Breaker (1, 2, 3, 4)	14-10 AWG	2.2 Nm (20 lb-in)	
	8 AWG	2.8 Nm (25 lb-in)	
	6-4 AWG	3.0 Nm (27 lb-in)	
60A Circuit Breaker only	4-1/0 AWG	5.0 Nm (45 lb-in)	
IQ Gateway Breaker	14-10 AWG	2.26 Nm (20 lb-in)	
Neutral and ground	Large screw	2-1/0 AWG	5.6 Nm (45 lb-in)
		14-3 AWG	5.1 Nm (45 lb-in)
	Small screw	6 AWG	3.6 Nm (32 lb-in)
		8 AWG	2.6 Nm (23 lb-in)
10-14 AWG		2.3 Nm (20 lb-in)	
Main lug	10-4 AWG	5.0 Nm (45 lb-in)	
	3-2/0 AWG	5.6 Nm (50 lb-in)	

Copper conductors only, rated min. 75°C.
 Follow NFPA 70 (NEC), or CSA C22.1 part 1, and all local codes.
 For DG Breakers larger than 20A, use wire insulated for 90°C based on 75°C ampacities.

Designed in California and New Zealand
 Made in Mexico







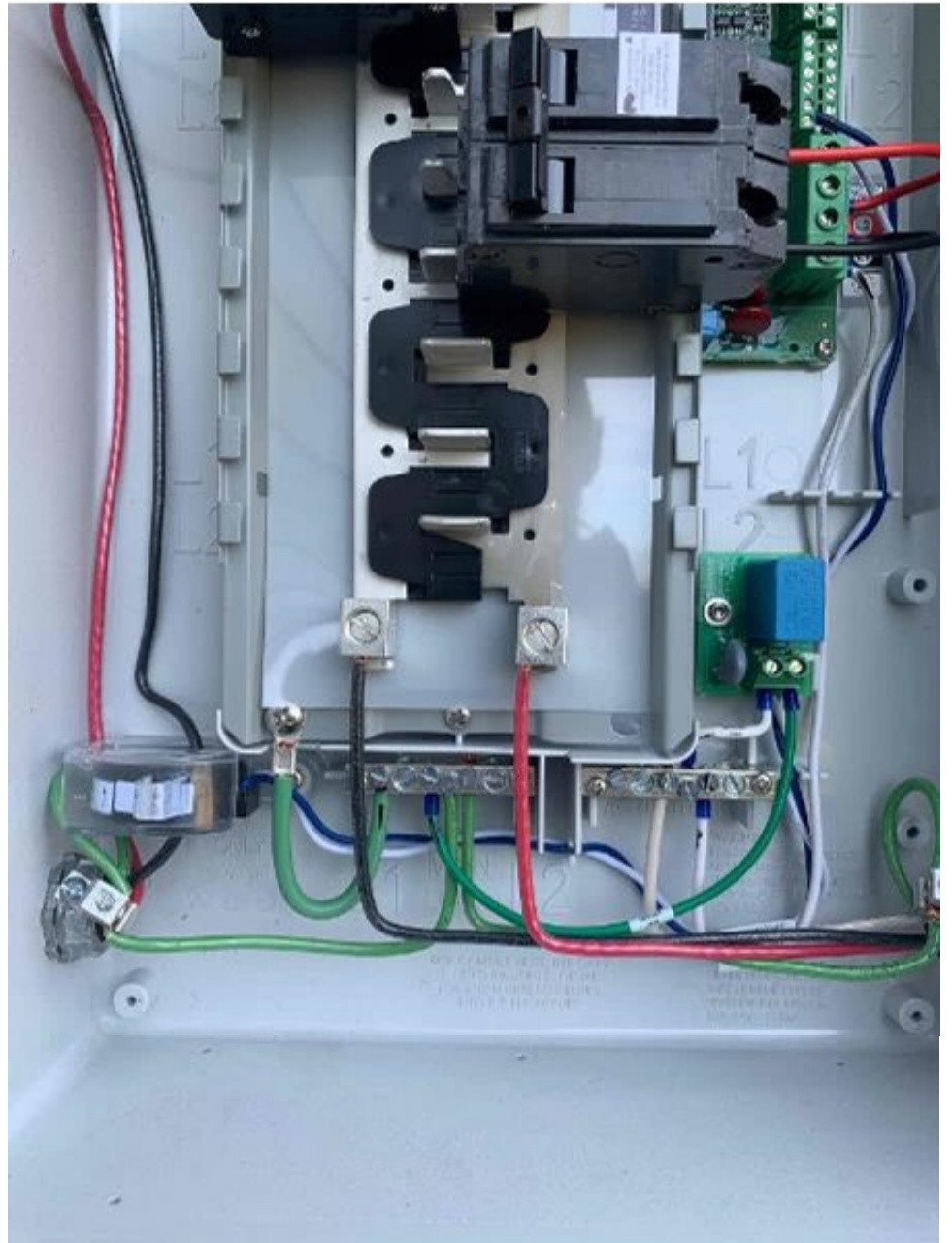


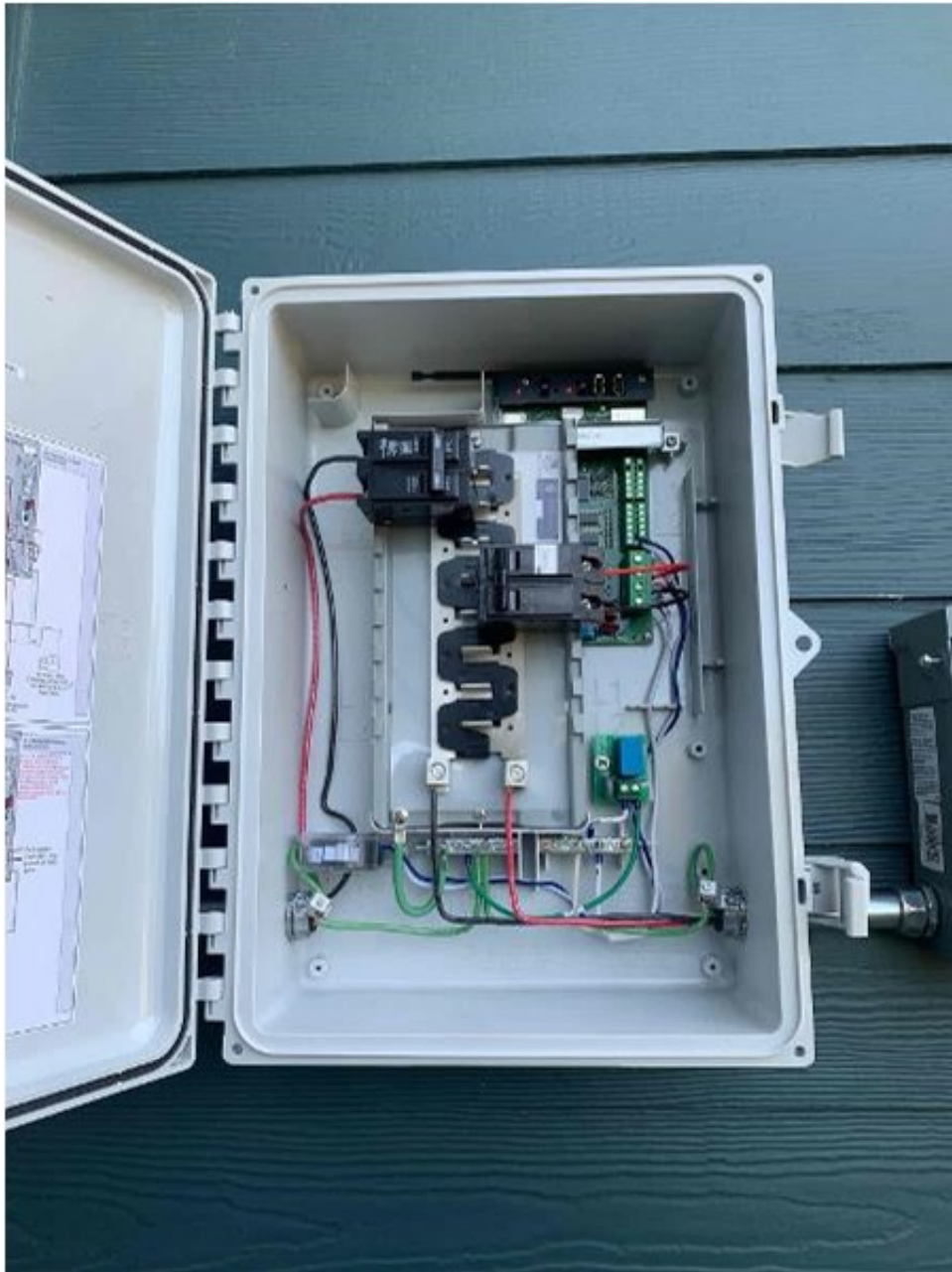




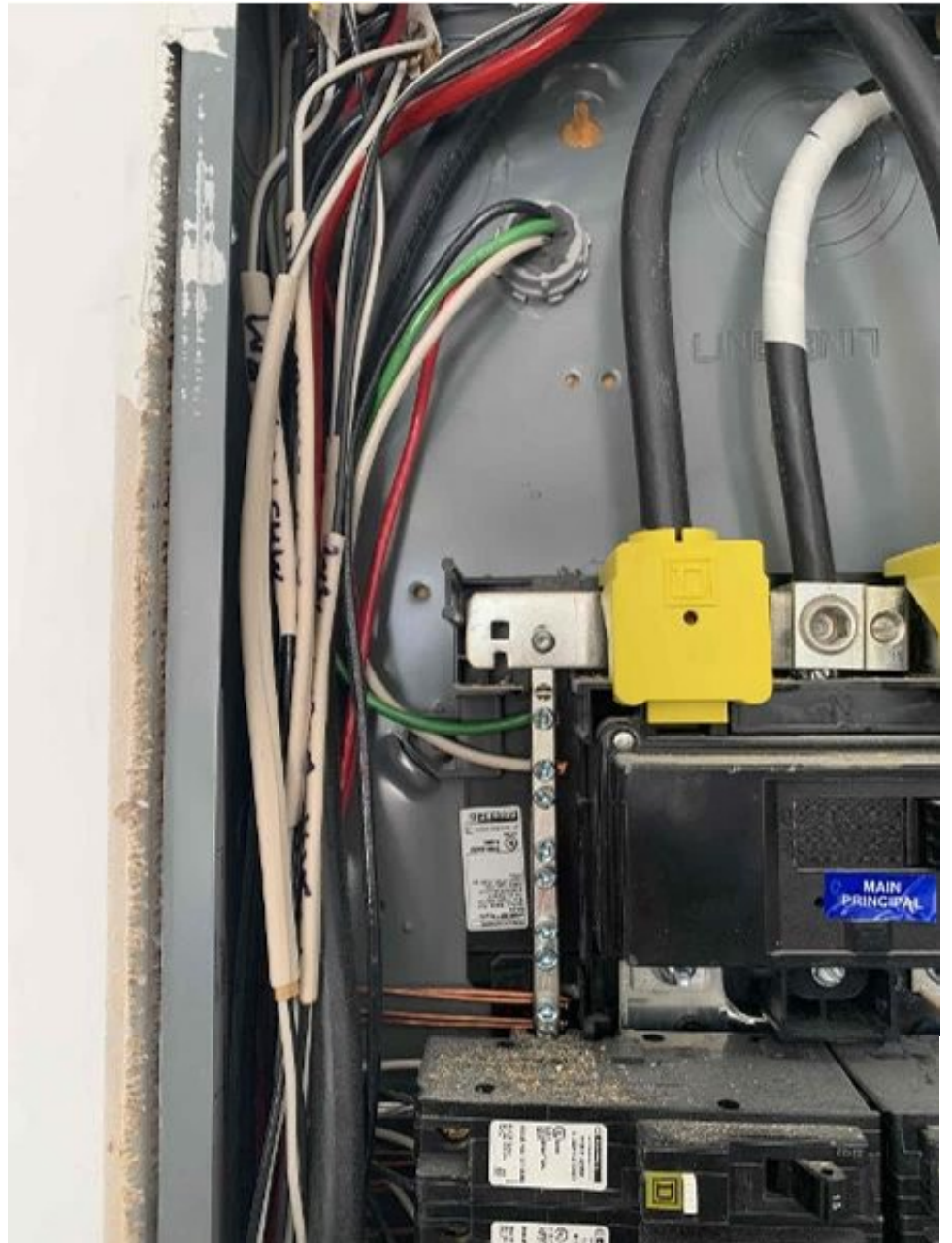


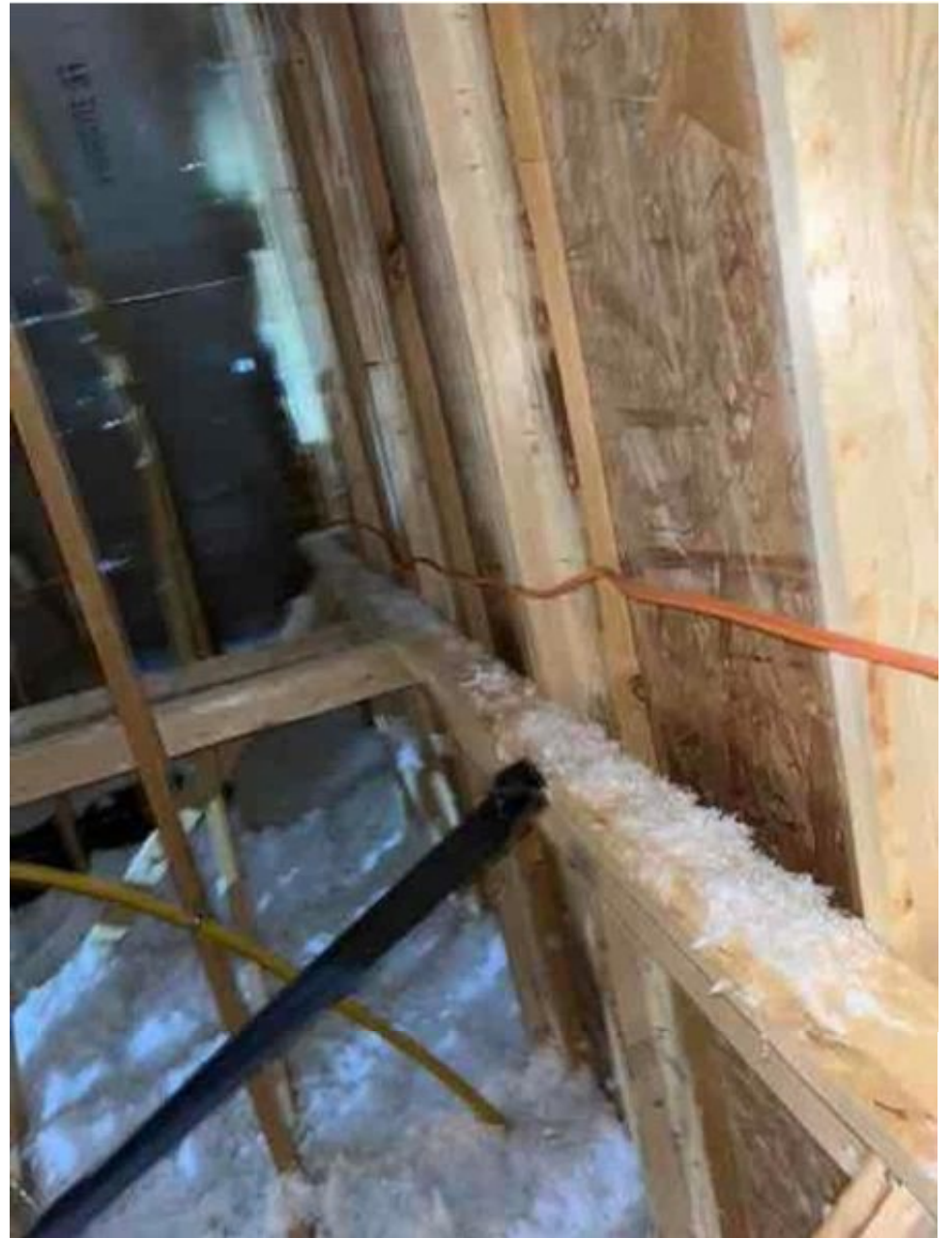
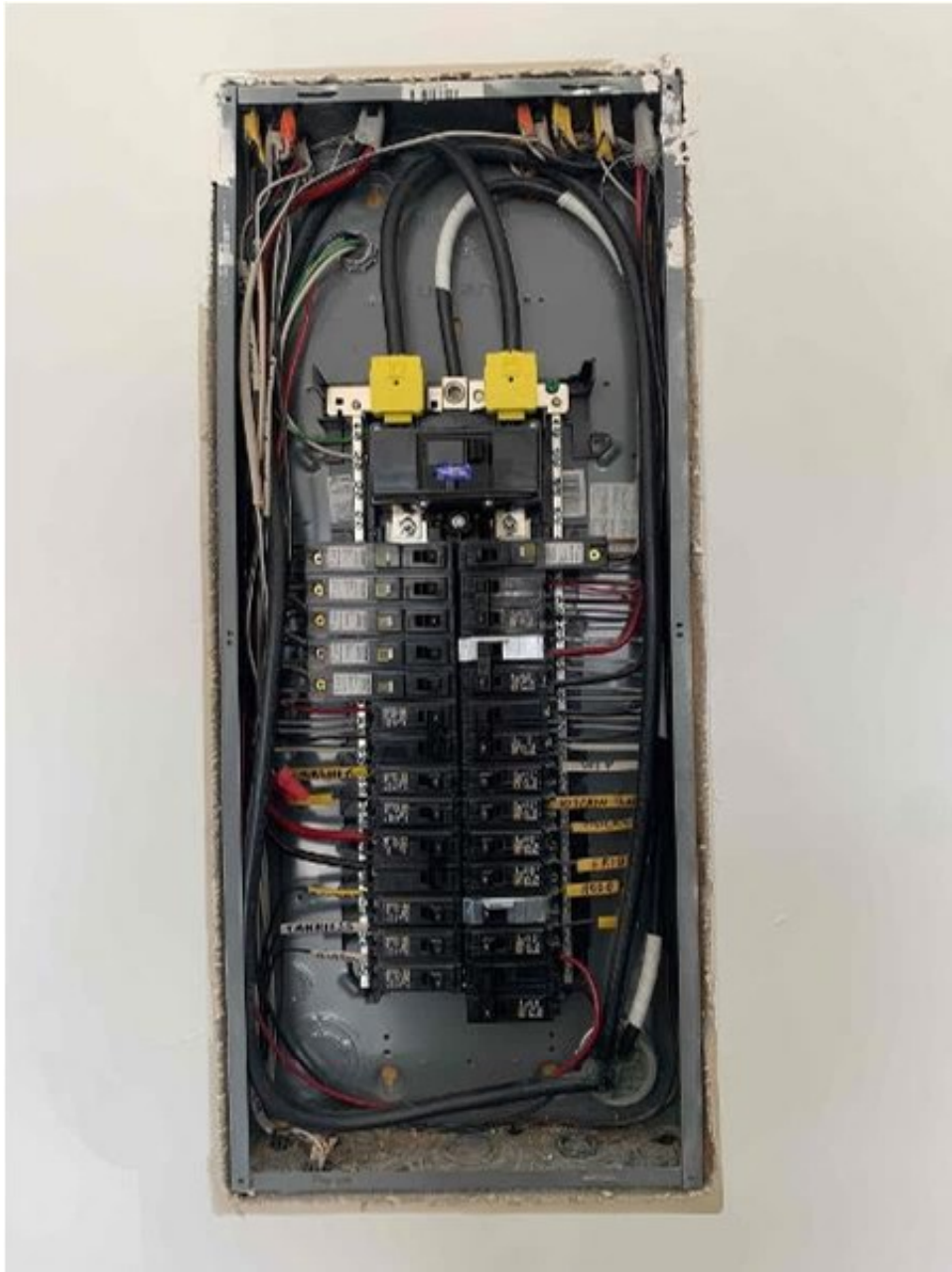


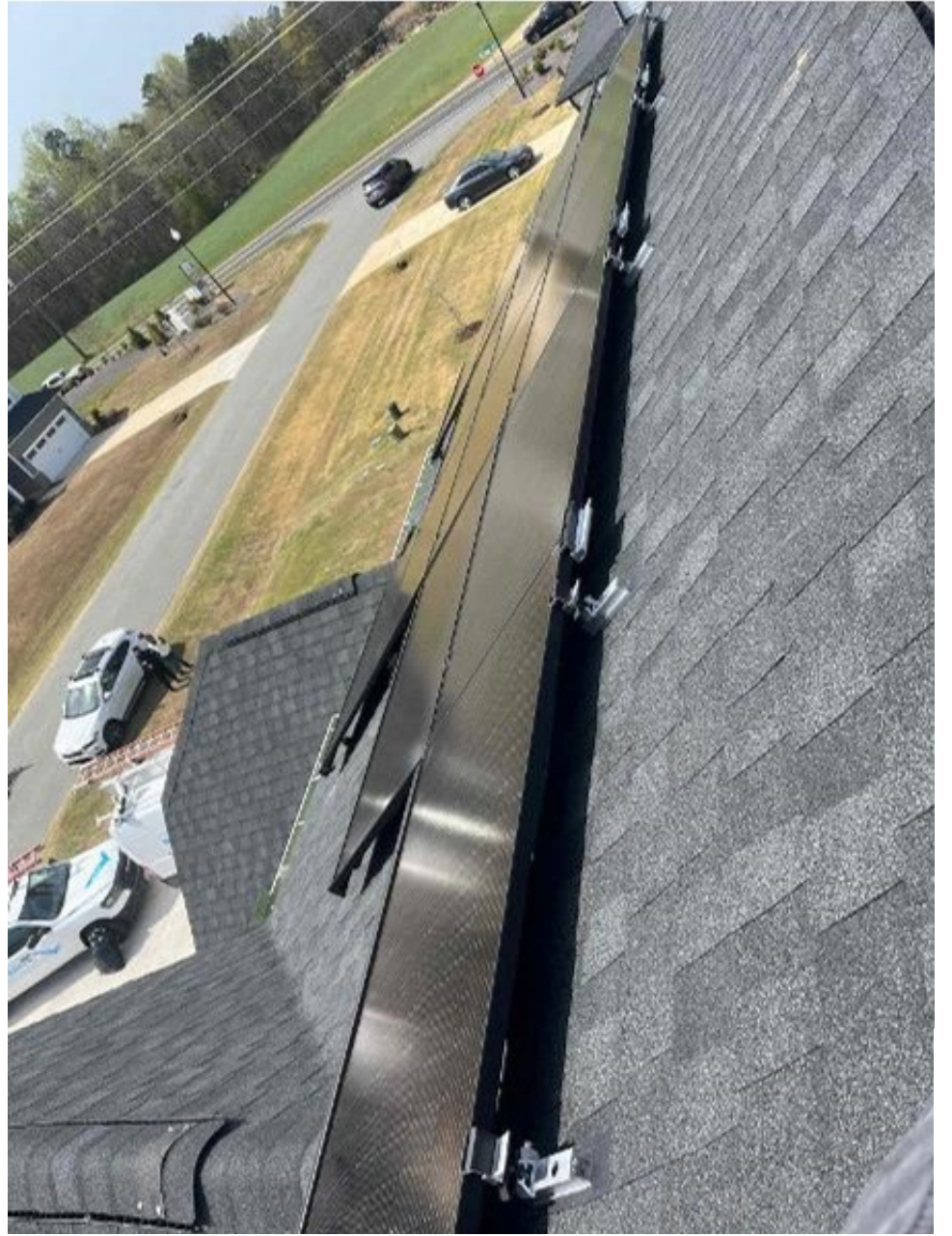


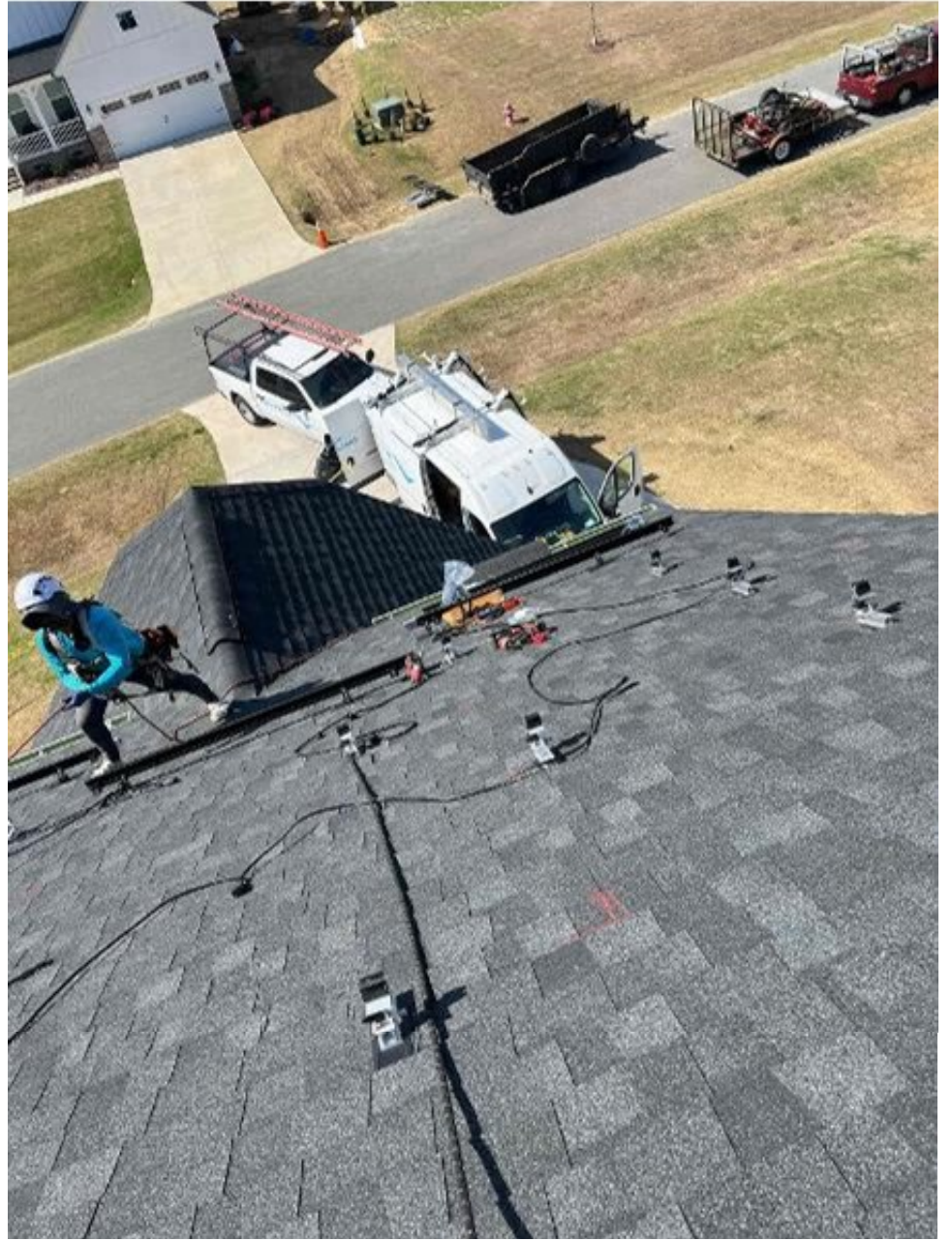
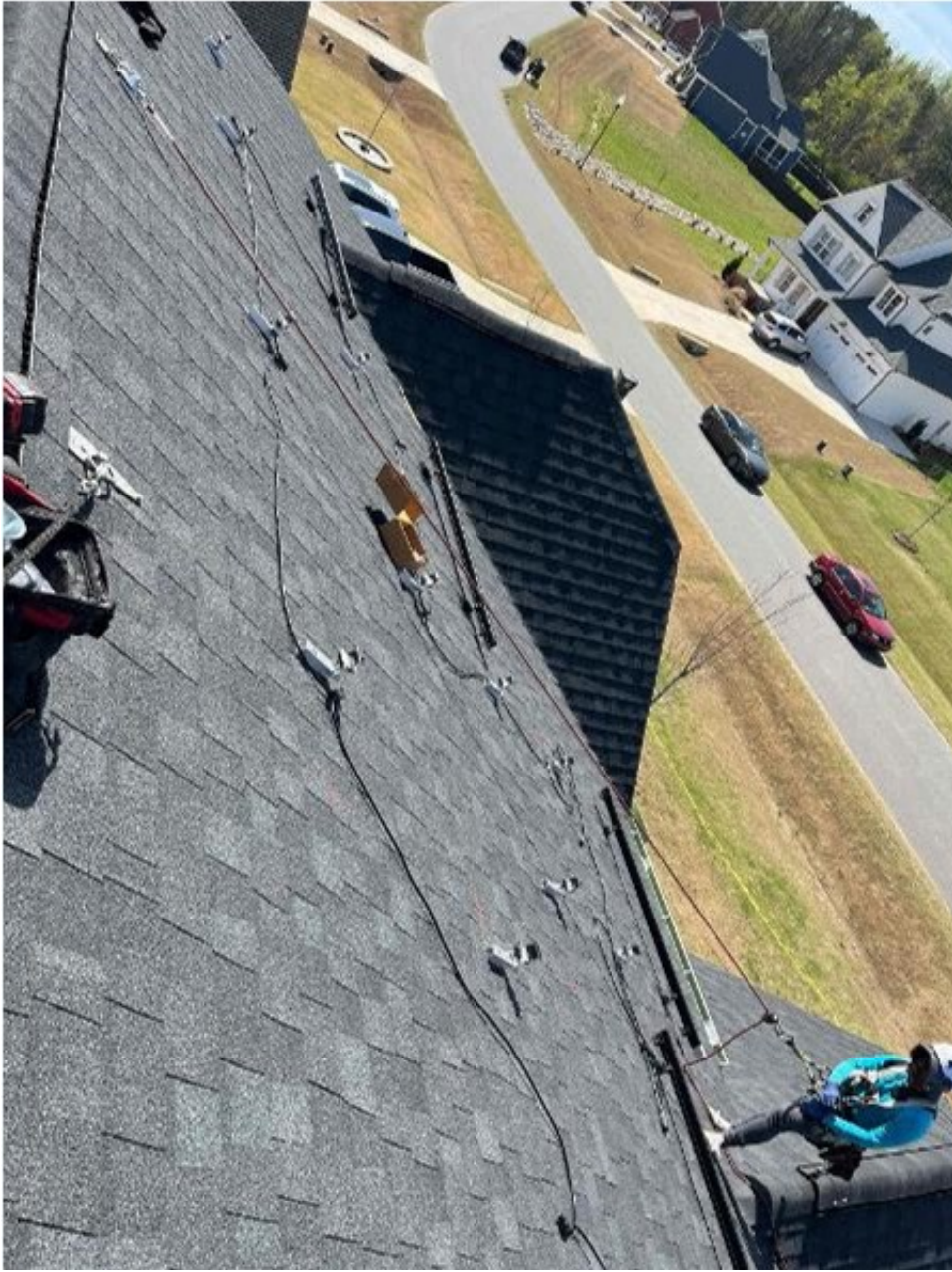
















Customer Name: **Proactive, Wood**
 Installation Date: **3/28/20**
 Job Hazard Analysis: **see photos for all**
 Address: **6000 W. Virginia Ave**
 Original Competed Address: **6000 W. Virginia Ave**
BLU RAVEN
 Version: 3.1

Activity	Hazards	Steps to Mitigate	Control
Climbing ladders	Fall Hazards	Ladder rungs/rafters secured Secured with ladder stop	W/ signposted for damage C/ Fall up at 1.4 ft/m
Working over #	Fall from roof Falls from edges	W/ Harness/Tool/Buckle/DAL required Anchor points installed correctly 100% tie off over #	W/ Fall arrest in use C/ Fall arrest in use C/ Inspected during this inspection
Work on high (30'-100') to eaves	Heat stress/Heat exhaustion/heat stroke Sunburn	W/ Hydration - buddy system/ breaks when necessary Hydration (water available)	W/ Hydration W/ Electrolytes
Working within the RAZ	Struck by hazard (falling objects)	W/ Everyone within RAZ wearing hardhat	W/ Hard hats at RAZ required
Electrical work	Electrical shock/Reentry/arc flash	W/ Arc flash PPE: CAT1 (gloves, pants, safety glasses, face shield, boots, sleeves, earplugs) Insulated gloves within 12" of exposed live components, CAT1 arc flash gloves within 3' of exposed panel	W/ Insulated W/ Arc flash PPE
Over/General Hazards	Struck by flying objects (tools) Cut hazards Ergonomic hazards (sprains) Other hazards	W/ Safety glasses worn at all times W/ Cut gloves worn at all times W/ Proper lifting techniques/ team lifting W/ Stairs to eaves (open)	W/ Safety glasses W/ Cut gloves W/ Proper lifting techniques/ team lifting W/ Stairs to eaves (open)
Other Tasks			

Crew Members	Signature	Date
Name		
Crew Lead	<i>[Signature]</i>	<i>[Date]</i>







