

ITEM NO	PART NO	DESCRIPTION	MATERIAL	QTY
1	BY OTHERS	4" SCH 40 PIPE	STEEL	1
2	RPS_BP02	BP CLAMP BRACKET	6063-T6	2
3	RPS_BP03	BP SHEET METAL CLAMP	AISI 304	2
4	RPS_BP04	BP TILTING BRACKET RIGHT	AISI 304	1
5	RPS_BP05	BP TILTING BRACKET LEFT	AISI 304	1
6	RPS_BP06	BP PANEL EXTENSION	6063-T6	2
7	RPS_BP07-S	BP EXTRUSION MOUNTING RAIL SHORT	6063-T6	4
8	RPS_BP07-L	BP EXTRUSION MOUNTING RAIL LONG	6063-T6	4
9	BY OTHERS	SOLAR PANEL ASSEMBLY	VARIOUS	1
10	BY OTHERS	5/16-18 X 3.5" BOLTS, WASHERS, & NUTS	SS GRADE 2	4 SETS
11	BY OTHERS	3/8-16 X .75" BOLT & WASHER	SS GRADE 2	2 SETS
12	BY OTHERS	3/8-16 X 6.5" BOLT, WASHER, & NUT	SS GRADE 2	1 SET



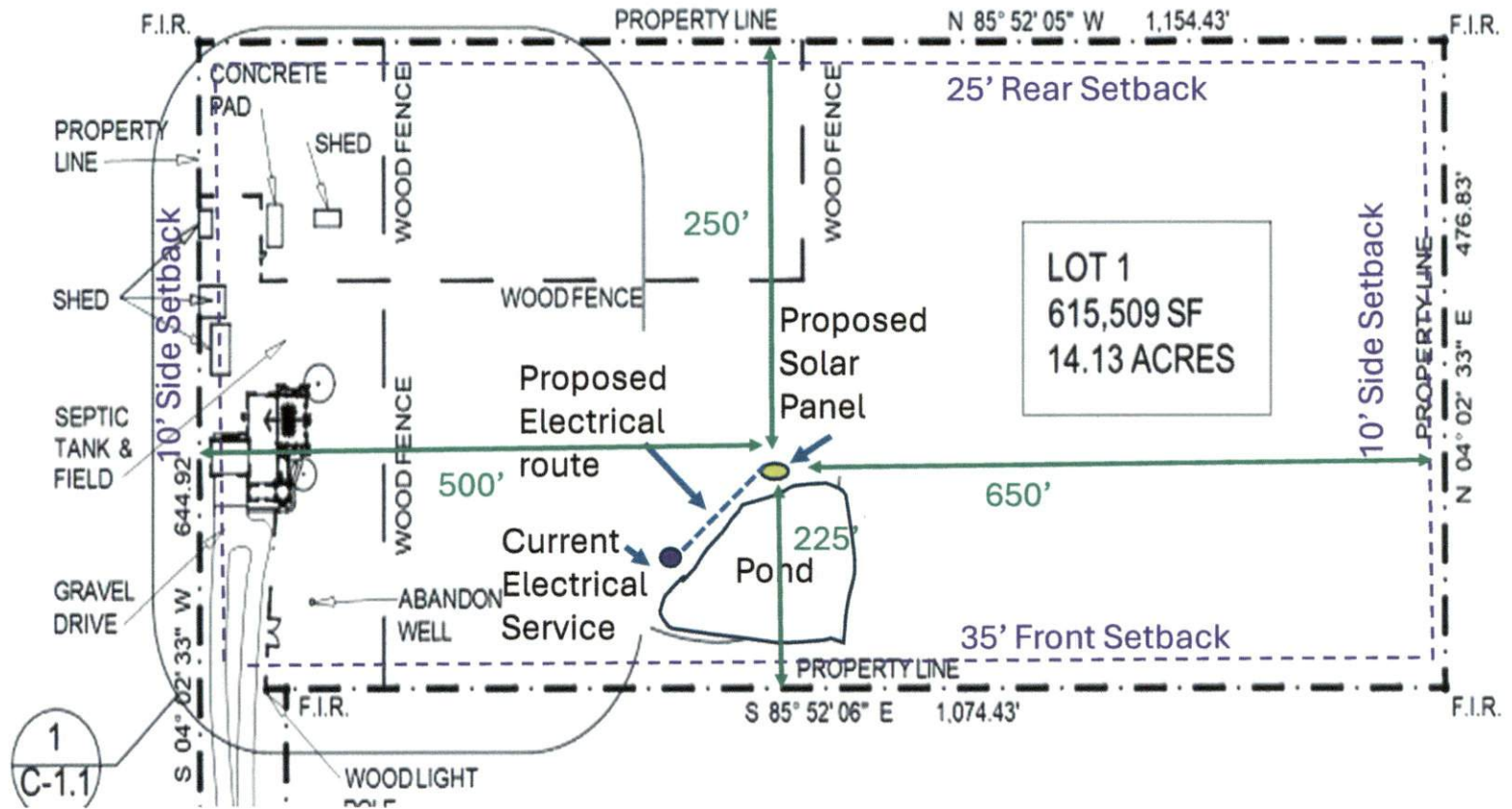
THD Yusk
7/1/18

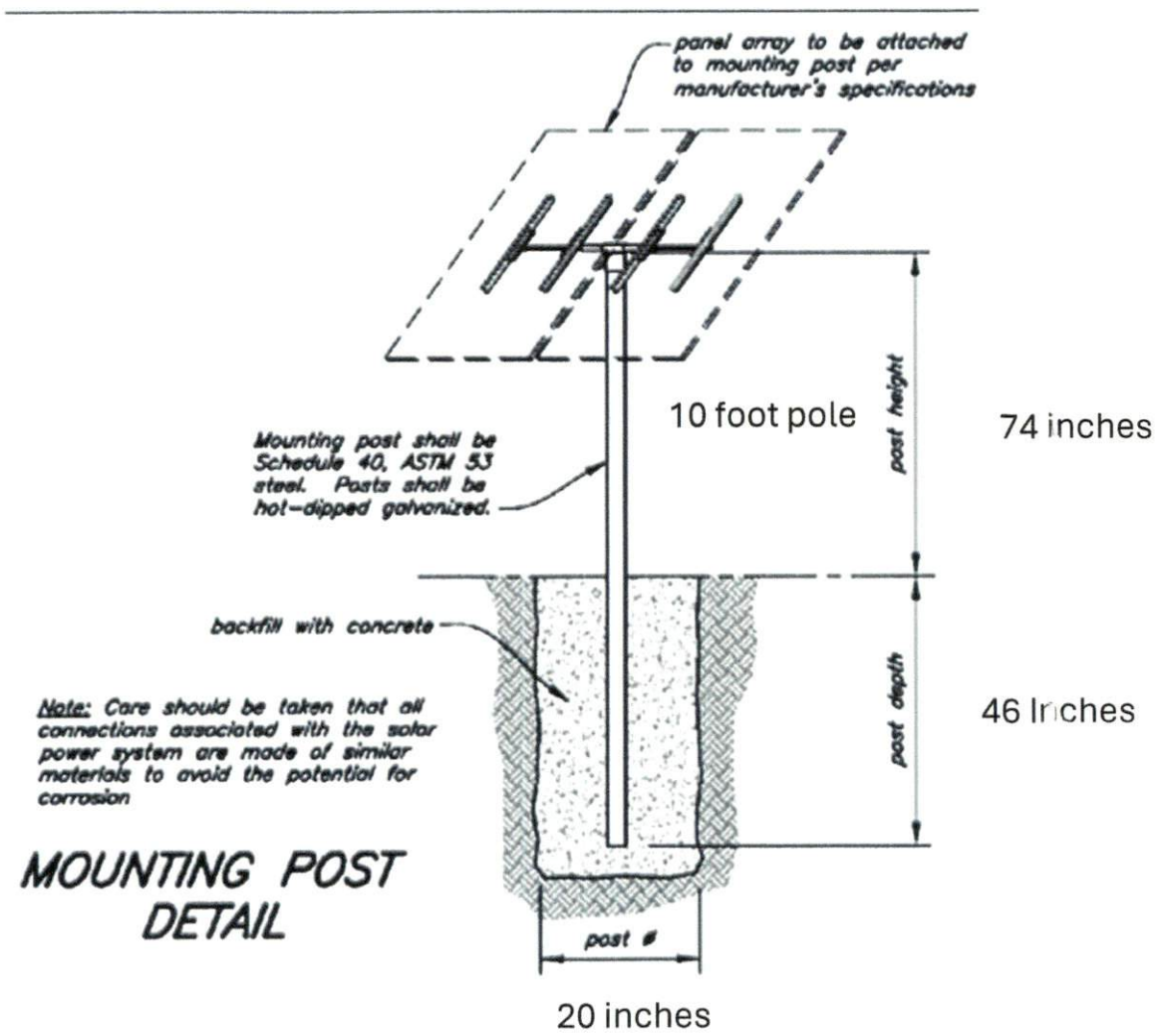
WIND	81 MPH
ICE	1" THICK
SNOW	20 PSF

UNLESS OTHERWISE SPECIFIED DIMENSIONS ARE IN INCHES TOLERANCES		DO NOT SCALE DRAWING	
FINISH	DATE	REGION	
DESIGN	12/10/18	VARIOUS	
PROJECT		8 PANEL MOUNT ASSY	
DRAWING NO.		RPS_BP01	
SCALE		A3	

Building Setbacks

- Front 35'
- Rear 20'
- Side Corner 20'
- Max Height 35'





Mounting Pole Installation Details

Panel Area (sq-ft)	Pole Size Sch-40 Steel (in.)	Length in Ground (in.)	Height Above Ground (in.)	Hole Dia. (in.)	Estimated Concrete (ft ³)
15	2	36	60	12	2.3
20	2.5	38	60	12	2.4
28	3	40	60	14	3.4
35	3	42	66	14	3.5
60	4	46	66	20	8.1
90	6	54	72	28	18.3
120	6	60	78	28	20.4

UL SOLAR PANELS

RPS Systems use different UL approved panels. *Solar Panels are calculated in 100w Increments and generally perform better than estimates as solar panels are officially rated to 115w.*

AmeriSolar Model: AS-6M30S 320 UL 1703, Type 2; IEC 61215, IEC 61730	Cell Type: Mono Peak Power (Pmax): 320w Tolerance: +/- 5%
Isc: 10.06 Imp: 9.64	Voc: 40.4 Vmp: 33.2 Vmax: 1000v
Dimensions: 65.59in × 39.45in × 1.38in Weight 41.9lbs (19kg)	Warranty: 25yr Less than 3% (see Warranty section) Engineered in Germany

Electrical Service 240v pump and 120v outlets