













S1 - red - 9p Tampa, young
S2 - yellow - 8p 903 Butler Dr, Erwin, NC



POWER SOURCE







PHOTOVOLTAIC POWER SOURCE

CENTAUR

394 H CENTAUR BLS 200L - TPE 5H 62L 2X









Do Not Remove
SolarEdge Technologies Ltd
SolarEdge Technologies GmbH
Werner-Eckert-Strasse 6/E140
Munich/Germany

FCC

CAUTION

HOT SURFACES TO REDUCE THE RISK OF BURNS DO NOT TOUCH AREA OF ELECTRIC SHOCK WHEN THE PHOTOVOLTAIC ARRAY IS EXPOSED TO LIGHT. IT SUPPLIES A DC VOLTAGE TO EQUIPMENT. COVER PV MODULE WITH OPaque MATERIAL BEFORE CONNECTING OR DISCONNECTING THIS OPTIMIZER. DURING FAULT, ZERO CURRENT IS SOURCED INTO DC ARRAY BY CONVERTER.

WARNING ELECTRIC SHOCK HAZARD: THE DC CONDUCTORS OF THIS PHOTOVOLTAIC SYSTEM ARE UNGROUNDED AND MAY BE ENERGIZED.

AVERTISSEMENT

RISQUE DE STROC ELECTRIQUE: QUAND LE CHAMP PHOTOVOLTAÏQUE EST EXPOSÉ À LA LUMIÈRE, UNE TENSION CC EST FOURNIE À CET ÉQUIPEMENT. SURFACES CHAUDES. NE PAS TOUCHER. À FIN DE RÉDUIRE LES RISQUES DE BRÛLURES LE COURANT DE RETOUR INVERSÉ PAR LE CONVERTISSEUR EN CAS DE DÉFAILLANCE DANS LE MODULE PV EST TOUJOURS NUL.




SinoKor Safety
 4444 Park Ave. S.W.
 Atlanta, GA 30346, USA
 404.444.4444
 www.sinokor.com

PHOTOVOLTAIC MODULE
 Module mounted in an area that is not shaded. Module must be fully illuminated.

Parameter	Value
Module Power (P _{max})	200W
Module Voltage (V _{oc})	41.5V
Module Current (I _{sc})	5.80A
Module Voltage (V _{mp})	34.5V
Module Current (I _{mp})	5.80A
Module Power (P _{max})	200W
Module Voltage (V _{oc})	41.5V
Module Current (I _{sc})	5.80A
Module Voltage (V _{mp})	34.5V
Module Current (I _{mp})	5.80A

Manufacturer: SinoKor
 Model: SK-200W-60
 Date of Manufacture: 2014
 Date of Installation: 2014
 Location: 10000 S. 100th St.
 City: Atlanta, GA 30346
 State: GA
 Country: USA
 Part No.: SK-200W-60-01
 Rev: 1.0
 Date: 2014-01-01




The following information is provided for reference purposes only and is not intended to be used as a substitute for the manufacturer's instructions.

WARNING
 This product is not to be used in wet or damp locations.

ASSESSMENT
 This product is not to be used in wet or damp locations.







Do Not Remove
180973AC-CA



CAUTION
HOT SURFACES TO REDUCE THE RISK OF BURNS DO NOT TOUCH. RISK OF ELECTRIC SHOCK WHEN THE PHOTOVOLTAIC ARRAY IS EXPOSED TO LIGHT. IT SUPPLIES A DC VOLTAGE TO EQUIPMENT COVER PV MODULES WITH OPaque MATERIAL BEFORE CONNECTING OR DISCONNECTING THIS OPTIMIZER. DURING FAULT, ZERO CURRENT IS SOURCED INTO DC ARRAY BY CONVERTER.



SolarEdge Technologies Ltd
Power Optimizer
SolarEdge Technologies GmbH
Werner-Eckert-Straße 6/81829
Munich/Germany

WARNING ELECTRIC SHOCK HAZARD. THE DC CONDUCTORS OF THIS PHOTOVOLTAIC SYSTEM ARE UNGROUNDED AND MAY BE ENERGIZED.

AVERTISSEMENT

RISQUE DE CHOC ELECTRIQUE: QUAND LE CHAMP PHOTOVOLTAIQUE EST EXPOSE A LA LUMIERE, UNE TENSION DC EST FOURNIE A CET EQUIPEMENT SURFACES CHAUDES. NE PAS TOUCHER AFIN DE REDUIRE LES RISQUES DE BRULURES LE COURANT DE RETOUR INJECTE PAR LE CONVERTISSEUR EN CAS DE DEFAILLANCE DANS LE MODULE PV EST TOUJOURS NUL.







OFF
8121608 TYPE BJ
INTERRUPTING RATING
10,000 A 120/240 VAC
CL-M
OFF

ON
150
MAIN
ON
BRYANT
ER
UL

UL LISTED
TYPE HOMERUN
120/240V
15A
UL 488
UL 508
UL 517
UL 518
UL 519
UL 520
UL 521
UL 522
UL 523
UL 524
UL 525
UL 526
UL 527
UL 528
UL 529
UL 530
UL 531
UL 532
UL 533
UL 534
UL 535
UL 536
UL 537
UL 538
UL 539
UL 540

UL LISTED
TYPE HOMERUN
120/240V
15A
UL 488
UL 508
UL 517
UL 518
UL 519
UL 520
UL 521
UL 522
UL 523
UL 524
UL 525
UL 526
UL 527
UL 528
UL 529
UL 530
UL 531
UL 532
UL 533
UL 534
UL 535
UL 536
UL 537
UL 538
UL 539
UL 540

20
UL LISTED
TYPE HOMERUN
120/240V
20A
UL 488
UL 508
UL 517
UL 518
UL 519
UL 520
UL 521
UL 522
UL 523
UL 524
UL 525
UL 526
UL 527
UL 528
UL 529
UL 530
UL 531
UL 532
UL 533
UL 534
UL 535
UL 536
UL 537
UL 538
UL 539
UL 540

30
UL LISTED
TYPE HOMERUN
120/240V
30A
UL 488
UL 508
UL 517
UL 518
UL 519
UL 520
UL 521
UL 522
UL 523
UL 524
UL 525
UL 526
UL 527
UL 528
UL 529
UL 530
UL 531
UL 532
UL 533
UL 534
UL 535
UL 536
UL 537
UL 538
UL 539
UL 540

80
UL LISTED
TYPE HOMERUN
120/240V
80A
UL 488
UL 508
UL 517
UL 518
UL 519
UL 520
UL 521
UL 522
UL 523
UL 524
UL 525
UL 526
UL 527
UL 528
UL 529
UL 530
UL 531
UL 532
UL 533
UL 534
UL 535
UL 536
UL 537
UL 538
UL 539
UL 540



PHOTOVOLTAIC POWER SOURCE









EAT•N

General Duty Safety Switch
Interrupteur de sécurité à usage général
Interruptor de seguridad de servicio general

60 A, 240 V~, 60 Hz

Complete ratings inside
Valeurs nominales complètes à l'intérieur
Información completa de capacidades en el interior

Further instructions inside
Autres instructions à l'intérieur
Instrucciones adicionales en el interior

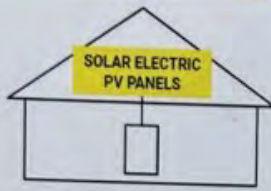
Made in U.S.A. / Fabriqué aux É.U. / Hecho en E.U.A.

⚠ DANGER
HAZARDOUS VOLTAGE, WILL CAUSE SEVERE INJURY OR DEATH.
• Never operate with cover open.
• Turn OFF power ahead of switch before doing any work inside. Release all parts. Close cover before locking.
TENSION DANGEREUSE, PEUT CAUSER DES BLESSURES GRAVES OU LA MORT.
• Ne jamais fonctionner l'interrupteur lorsque le couvercle est ouvert.
• Débrancher l'alimentation de l'interrupteur avant toute intervention. Relâcher les pièces. Fermer le couvercle avant de verrouiller le couvercle.

⚠ PELIGRO
VOLTAGE PELIGROSO, PUEDE CAUSAR HERIDAS SEVERAS O LA MUERTE.
• Nunca opere el interruptor con el cubreabierto.
• Desconectar la alimentación del interruptor antes de trabajar dentro del mismo. Soltar todas las partes. Cerrar la cubierta antes de asegurar el interruptor.



**SOLAR PV SYSTEM
EQUIPPED WITH
RAPID SHUTDOWN**



TURN RAPID SHUTDOWN SWITCH TO THE "OFF" POSITION TO SHUT DOWN PV SYSTEM AND REDUCE SHOCK HAZARD IN THE ARRAY

**RAPID SHUTDOWN
SWITCH FOR
SOLAR PV SYSTEM**

⚠ WARNING

ELECTRIC SHOCK HAZARD

TERMINALS ON THE LINE AND LOAD SIDES MAY BE ENERGIZED IN THE OPEN POSITION

**AC DISCONNECT
PHOTOVOLTAIC SYSTEM
POWER SOURCE**

RATED AC OUTPUT CURRENT	25	AMPS
NOMINAL OPERATING AC VOLTAGE	240	VOLTS

ON
I

OFF
O

solar edge SE6000H - US
**Grid Support Utility Interactive
Non-Isolated Photovoltaic Inverter**

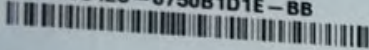
Operating Voltage Range 270 - 480Vdc
Max Input Current 16.5Ade
Max Continuous Output Power 5000Wac @ 208V 6000Wac @ 240V
Voltage Min - Nom - Max 183 - 208 - 229Vac
211 - 240 - 264Vac
Max Continuous Output Current 24Aac @ 208V 25Aac @ 240V
Max Output Fault Current 72Aac
Max Utility Backfeed Current 0Aac
Frequency Min - Nom - Max 59.3 - 60.0 - 60.5Hz
Output Power Factor +/- 0.85 - 1
Max Ambient Temperature 60 C
Enclosure IP65 / Type 3R
With Integrated ground fault protection per NEC 690.35 (C)
Type I Photovoltaic Arc-Fault Circuit-Protection

Wi-Fi Password: r9W4Tak2
Activation: +7uk 8n/ gndR TaU6 WXzL IgW4 Z2Q =

WiFi MAC:
84:D6:C5:81:08:F6
ZigBee MAC:



PN: SE6000H - USSNBBL14
SN: SV3423 - 0750B1D1E - BB



solar edge



**PHOTOVOLTAIC RAPID
SHUTDOWN SYSTEM**

solar edge



ETL LISTED
CONFORMS TO
ANSI/UL 1741
CERTIFIED TO
CAN/CSA
C22.2 NO 307



750B1D1E-BB



Contains FCC ID 2AGPT-PLNX, IC-20916-PNLX. The enclosed device complies with part 35 of the FCC Rules. Operation is subject to the following two conditions:
(1) This device may not cause harmful interference and
(2) This device must accept any interference received, including interference that may cause undesired operation.
PATENT MARKING NOTICE-SEE www.solaredge.com/groups/patent Made in Vietnam

solaredge

StorEdge Connection Unit



Max DC Voltage (PV/Battery)	480 Vdc
Max DC Current (PV)	51 Adc
Max Continuous DC Current (Battery)	31 Adc
Max AC Voltage	264 Vac
AC-Single Phase Frequency	50/60 Hz
Max AC Current (Grid)	40 Aac

For more details refer to the installation guide
Patent marketing notice: see WWW.SOLAREEDGE.COM/patent

DCD-1PH-US-P3H-F-1

PN:

SV3423-191923D8F-EF

SN:

Made in Vietnam



Intertek
4004590



solaredge

StorEdge Connection Unit



Max AC Current (Smart EV Charger)	40Aac
Max Continuous Output Power (Smart EV Charger)	9600W

Ambient Temperature: -40°C ..60°C
Enclosure Rating: IP65/ Type 4X

For more details refer to the installation guide
Patent marketing notice: see WWW.SOLAREEDGE.COM/patent
Use 90° C copper PV wires only.
Revenue Grade ANSI C12.20
PHOTOVOLTAIC RAPID SHUTDOWN SYSTEM

DCD-1PH-US-P3H-F-1

PN:

SV3423-191923D8F-EF

SN:

Made in Vietnam

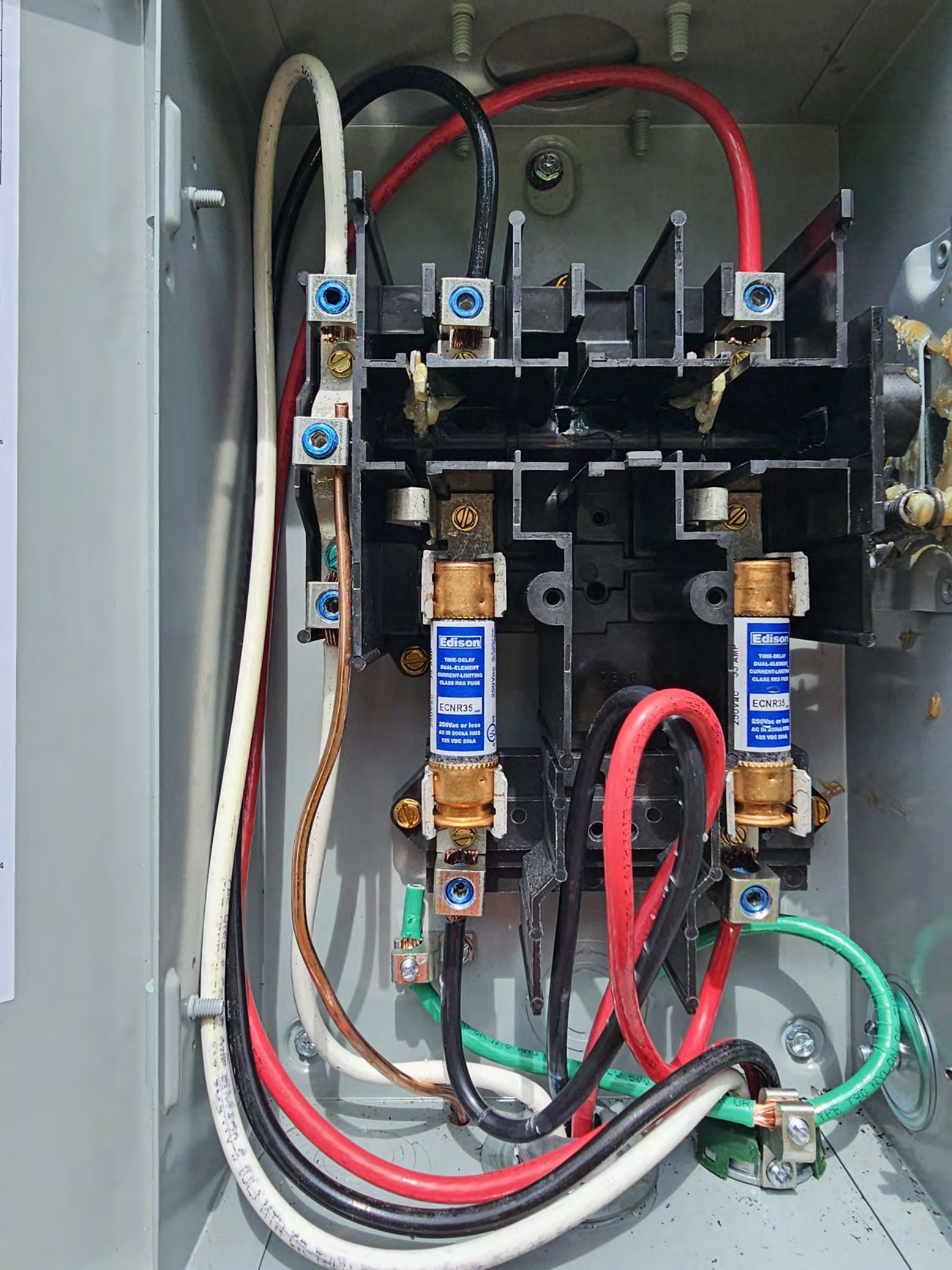


Intertek
4004590









Edison
TIME-DELAY
DUAL-ELEMENT
CURRENT-LIMITING
CLASS RK5 FUSE
ECNR35
250V ac or less
40 IN 200kVA RMS
125 VDC 20kA

Edison
TIME-DELAY
DUAL-ELEMENT
CURRENT-LIMITING
CLASS RK5 FUSE
ECNR35
250V ac or less
40 IN 200kVA RMS
125 VDC 20kA

Edison

TIME-DELAY
DUAL-ELEMENT
CURRENT-LIMITING
CLASS RK5 FUSE

ECNR35 AMP

250Vac or less
AC IR 200kA RMS
125 VDC 20kA

AC IR 200kA RMS
125 VDC 20kA
250Vac
UL US LISTED

Edison

TIME-DELAY
DUAL-ELEMENT
CURRENT-LIMITING
CLASS RK5 FUSE

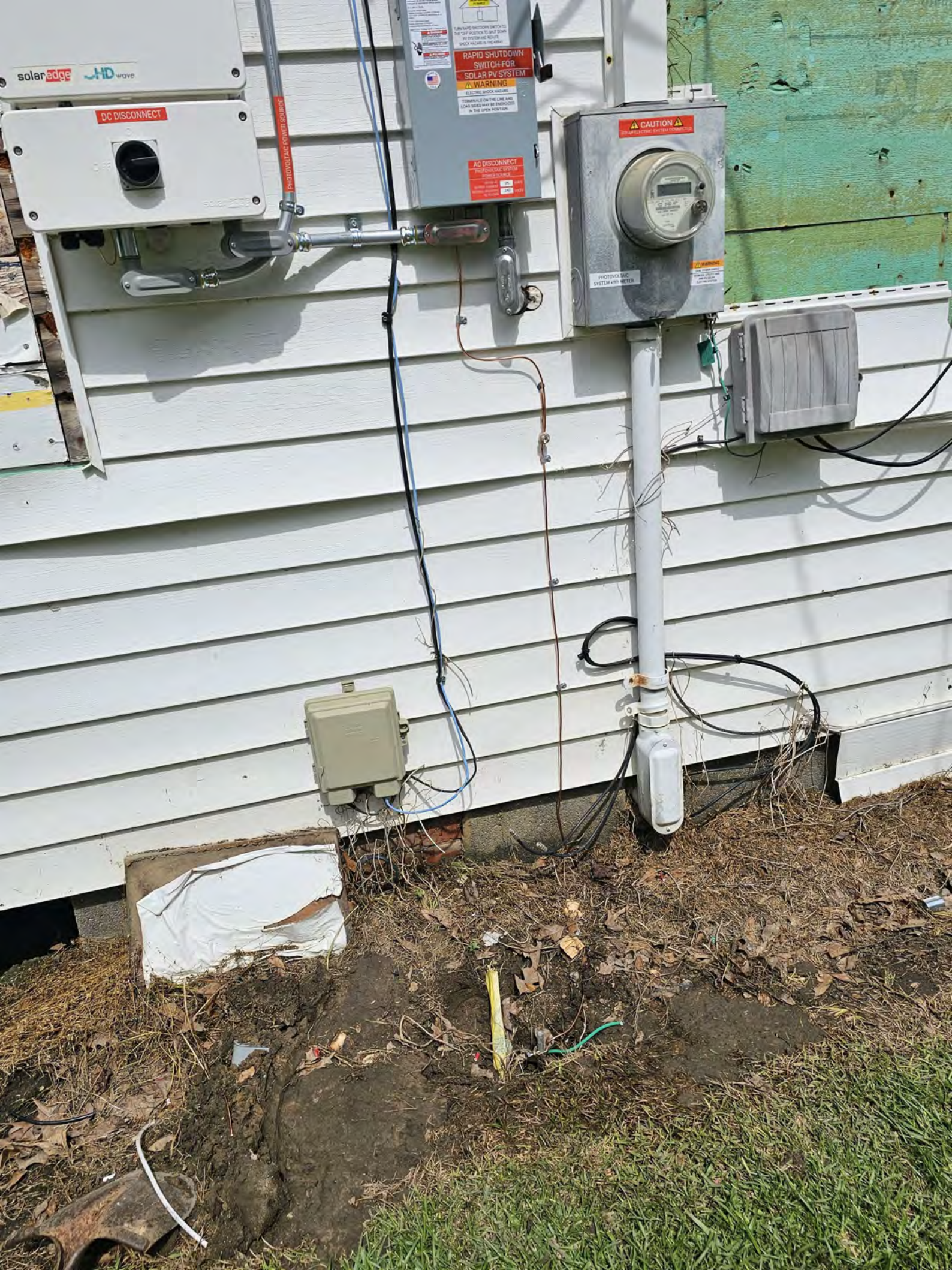
ECNR35

250Vac or less
AC IR 200kA RMS
125 VDC 20kA

UL US LISTED







solar edge HD wave

DC DISCONNECT

TURN HANDLE (CLOCKWISE) TO THE OFF POSITION TO SHUT DOWN THE SYSTEM AND REMOVE ELECTRIC SHOCK HAZARD IN THE AREA

RAPID SHUTDOWN SWITCH FOR SOLAR PV SYSTEM

WARNING

ELECTRIC SHOCK HAZARD

TERMINALS ON THE LINE AND LOOSE Wires MAY BE ENERGIZED IN THE OPEN POSITION.

AC DISCONNECT

PHOTOVOLTAIC SYSTEM POWER SOURCE

120V 15A

CAUTION

PHOTOVOLTAIC SYSTEM COMPONENTS

PHOTOVOLTAIC SYSTEM kWh METER





E-491006

Dus

COVER

EATON®

General Duty Safety Switch
Interrupteur de sécurité à usage général
Interruptor de seguridad de servicio general

60 A, 240 V~, 60 Hz

Complete ratings inside
Valeurs nominales complètes à l'intérieur
Información completa de capacidades en el interior

Further instructions inside
Autres instructions à l'intérieur
Instrucciones adicionales en el interior

Made in U.S.A. / Fabriqué aux É.-U. / Hecho en E.U.A.

⚠ DANGER
HAZARDOUS VOLTAGE. WILL CAUSE SEVERE INJURY OR DEATH.

- Never operate switch with cover open.
- Turn OFF power ahead of switch before doing any work inside. Replace all parts. Close cover before turning power ON.

TENSION DANGEREUSE. PEUT CAUSER DES BLESSURES GRAVES OU LA MORT.

- Ne jamais manœuvrer l'interrupteur lorsque le couvercle est ouvert.
- Couper l'alimentation en amont de l'interrupteur avant toute intervention. Remplacer les pièces. Fermer le couvercle avant de remettre sous tension.

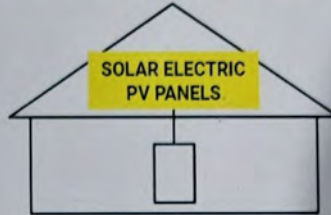
⚠ PELIGRO
VOLTAJE PELIGROSO. PUEDE CAUSAR HERIDAS SEVERAS O LA MUERTE.

- Nunca opere el interruptor con la cubierta abierta.
- Desconectar la alimentación del interruptor antes de trabajar dentro del mismo. Reemplazar todas las partes. Cerrar la cubierta antes de energizar el interruptor.

30-43080



**SOLAR PV SYSTEM
EQUIPPED WITH
RAPID SHUTDOWN**



TURN RAPID SHUTDOWN SWITCH TO THE "OFF" POSITION TO SHUT DOWN PV SYSTEM AND REDUCE SHOCK HAZARD IN THE ARRAY

**RAPID SHUTDOWN
SWITCH FOR
SOLAR PV SYSTEM**

⚠ WARNING
ELECTRIC SHOCK HAZARD
**TERMINALS ON THE LINE AND
LOAD SIDES MAY BE ENERGIZED
IN THE OPEN POSITION**

**AC DISCONNECT
PHOTOVOLTAIC SYSTEM
POWER SOURCE**

RATED AC OUTPUT CURRENT	25	AMPS
NOMINAL OPERATING AC VOLTAGE	240	VOLTS

ON

OFF



solar**edge**

 HD wave

DC DISCONNECT

ON

OFF

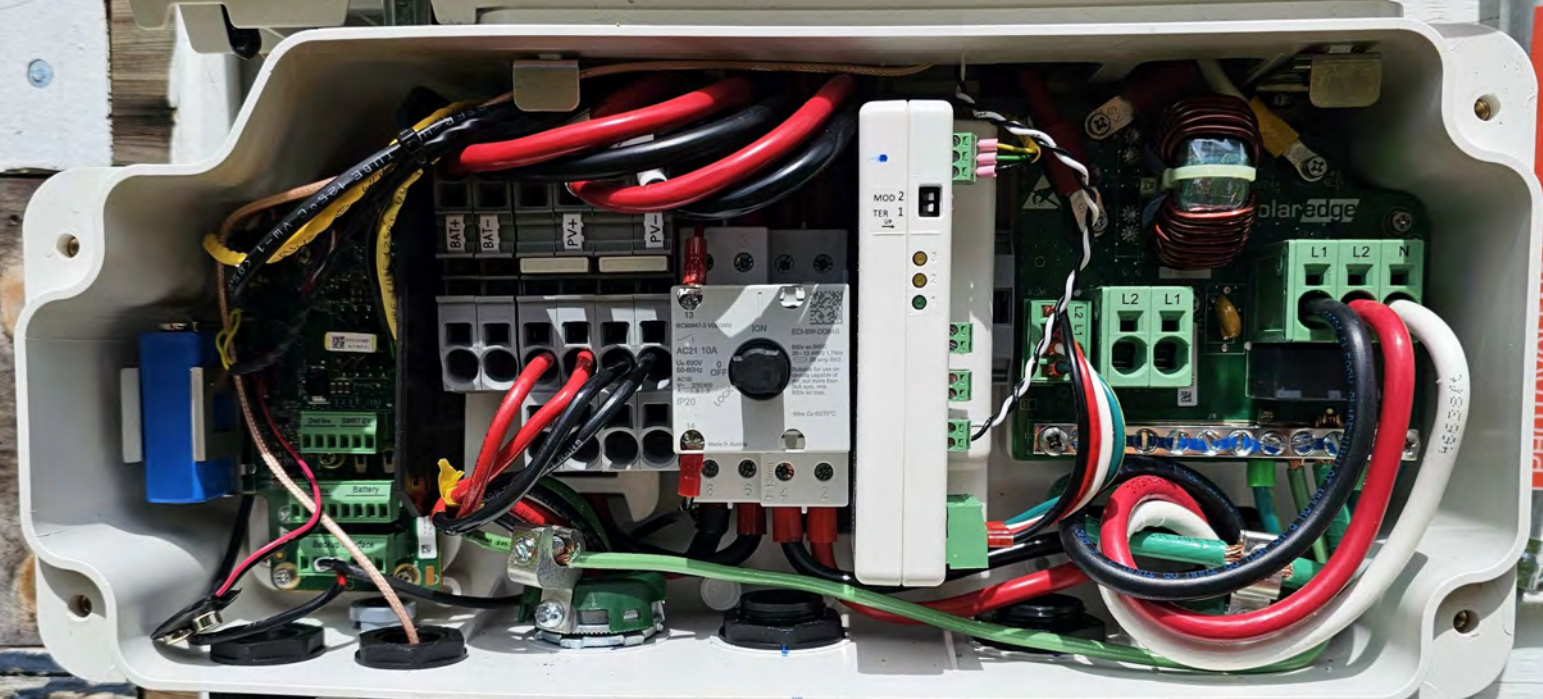


solar**edge**

PHOTOVOLTAIC POWER SOURCE

solar**edge**

HD wave



PHOTOVOLTAIC POWERED SOURCE

 **CAUTION** 
SOLAR ELECTRIC SYSTEM CONNECTED

CENTRON[®]


00025F348F
FCC ID: SK9AM7, IC:884G-AM7, MODEL:AM7

888 000000

CL200 240V 3W TYPE C2M 30TA 1.0Kh
ZZZ 3F4621 H67 CA 0.5
DUKE ENERGY PROGRESS FM2S
332 303 424 60Hz

F120529
OpenWay
3/20

PHOTOVOLTAIC
SYSTEM kWh METER

 **WARNING**
DUAL POWER SUPPLY
SOURCES: UTILITY GRID
AND PV SOLAR
ELECTRIC SYSTEM



ULSD
Kupfer
100% Kupfer
100% Kupfer
100% Kupfer
100% Kupfer

OFF
B21508 TYPE B3
REVERSE-TURN SWITCH
10,000 A - 120/240 VAC
03-84

20

