





We aim for a greener tomorrow with completely clean energy solutions

Q.TRON BLK M-G2+ 425

PERFORMANCE AT STANDARD TEST CONDITIONS*

Nominal Power* (+5W/-0W)	P_{MPP}	[W]	425
Short circuit current*	I_{SC}	[A]	13.66
Open circuit voltage*	V_{OC}	[V]	39.03
Current at maximum power	I_{MPP}	[A]	12.98
Voltage at maximum power	V_{MPP}	[V]	32.74
Maximum system voltage	V_{SYS}	[V]	1000(IEC) 1000(UL)
Weight	M	[kg/lbs]	21.2/46.7

* Measurement tolerances: $P_{MPP} \pm 3\%$; I_{SC} , $V_{OC} \pm 5\%$ at STC: $1000W/m^2$, $25 \pm 2^\circ C$, AM 1.5 according to IEC 60904-3. Data given are rated (nominal) values. IEC 61215:2016; IEC 61730:2016.



www.tuv.com
ID 1111220277



204624024500101223

Hanwha Q CELLS USA Inc.,
300 Nexus Drive, Dalton GA 30721, USA

qcells

Assembled in USA



DANGER!
Risk of electric shock!
DO NOT connect or disconnect plug contacts while system is under load current. Refer to the Installation and Operation Manual before installing, operating or servicing this unit.

DANGER!
Risque de choc électrique!
NE PAS connecter ou déconnecter les connecteurs lorsque le système est en charge. Consultez le manuel d'installation et d'utilisation avant installation, utilisation et entretien du produit.

Fire Rating: Class C/Type 2
Fuse Rating: 20A

U.S. Patent No. 9,893,215
(solar cells)

EMAIL service@q-cells.com
WEB www.qcells.com

1261 ROLLINS MILL RD
HOLLY SPRINGS NC 27540



Galaxy A13 5G



ENPHASE.

IQ8+

Grid Support Utility interactive inverter
Multi-inverter Inverter
*Please refer to the following website for more information: enphase.com/support

Off-grid Power Factor: 1 to 0.95
On-grid Power Factor: 0.98
DC Input Voltage: 16-80 V
Max. input open-circuit voltage: 25.2 V
Max. input maximum current: 12 A
AC Output Voltage: 120 VAC
AC Output Current: 1.27 A
AC Output Frequency: 60 Hz

AC Output Power (from manufacturer): 200 VA
Operating Temperature: 0°C to 60°C (32°F to 144°F)
Ingress Protection: NEMA Type 6
Performance Report Download Equipment
REC 400 V3 and CEC - 2010 Rule set 214
UL 1741 and UL 1741-2014

UL
Listed
UL1741
UL1741-2014

This device complies with part 15 of the FCC Rules. Operation is subject to the following two conditions: (1) This device may not cause harmful interference. (2) This device must accept any interference received, including interference that may cause undesired operation.

WARNING: ELECTRIC SHOCK HAZARD. DO NOT TOUCH THE PHOTOVOLTAIC SYSTEM OR DISCONNECT TERMINALS UNDER THE FOLLOWING CONDITIONS: AC-DC DC VOLTAGE BOTH BEFORE SEARCHING, FURTHER CONTACT WITH DC WIRING OR AC VOLTAGE TO THE EQUIPMENT WHEN IT IS POWERED TO LIGHT, FRET SURFACES TO REDUCE THE RISK OF BURNING. DO NOT TOUCH.

ATTENTION: RISK OF ELECTROCUSSION LES CONTACTER LES COMPOSANTS DU SYSTEME PHOTOVOLTAÏQUE NE DOIT PAS ÊTRE FAIT AVANT D'AVOIR DÉBRANCHÉ LES TERMINAUX DES PILES SOLAIRES. NE PAS TOUCHER LES COMPOSANTS DU SYSTÈME PHOTOVOLTAÏQUE EN COURSE DE TRAVAIL. NE PAS TOUCHER LES SURFACES DE LA PHOTOVOLTAÏQUE EN COURSE DE TRAVAIL. NE PAS TOUCHER LES SURFACES DE LA PHOTOVOLTAÏQUE EN COURSE DE TRAVAIL.

Made in the USA
from imported parts

Do not disconnect
under load

Galaxy A13 5G



Galaxy A13 5G



Galaxy A13 5G



Galaxy A13 5G



Galaxy A13 5G



Galaxy A13 5G























840-00387-17
250VAC 20A
+79°C 2251

UL
CERTIFIED
SAFETY/UL-CA
E486080

146

AC







522333030706

IQ8PLUS-72-M-US
888-01374 04 9456





ENPHASE.

IQ8+

Grid Support Utility Interactive Inverter
Multimode Inverter

* Patent Information: <https://enphase.com/patents>

Off-grid Power Factor: -1 to 0 to +1
Grid-tied Power Factor: +0.95
DC input range: 16-50 V_{DC}
Max. input short-circuit current: 25 A
AC output voltage: 240 V_{AC}
AC output current: 1.21 A
AC output frequency: 60 Hz
AC output power (max. continuous): 290 VA
Operating temperature: -40 °C to +60 °C
Ingress protection: NEMA Type 6
Photovoltaic Rapid Shutdown Equipment
FMC 690.12 and CEC 1-2016 Rule 64-218
UL 1741 3rd Ed., Inst. 50 Compliant



This device complies with part 15 of the FCC Rules. Operation is subject to the following two conditions: (1) This device may not cause harmful interference. (2) This device must accept any interference received, including interference that may cause undesired operation.



CAUTION: RISK OF SHOCK. WARRANTY VOID IF COVER REMOVED. NO USER SERVICEABLE PARTS INSIDE. REFER SERVICING TO QUALIFIED SERVICE PERSONNEL.

WARNING: ELECTRIC SHOCK HAZARD. DC CONDUCTORS OF THIS PHOTOVOLTAIC SYSTEM ARE UNGROUNDED AND MAY BE ENERGIZED. AC AND DC VOLTAGE SOURCES TERMINATE INSIDE THIS EQUIPMENT. DISCONNECT BOTH BEFORE SERVICING. PHOTOVOLTAIC ARRAY SUPPLIES A DC VOLTAGE TO THIS EQUIPMENT WHEN EXPOSED TO LIGHT. HOT SURFACES: TO REDUCE THE RISK OF BURNS - DO NOT TOUCH.

ATTENTION: RISQUE D'ELECTROCUTION. LES CONDUCTEURS DC DE CE SYSTEME PHOTOVOLTAIQUE NE SONT PAS RELIES A LA TERRE ET PEUVENT ETRE SOUS TENSION. DES SOURCES DE TENSION CA ET CC SONT CONNECTEES A CET APPAREIL. SOUS LES CABLES COURANT CONTINU SONT SOUS TENSION. LORSQUE LE CHAMP PHOTOVOLTAIQUE EST EXPOSE A LA LUMIERE, RISQUE DE BRULURE. NE PAS TOUCHER.

Made in the USA
from imported parts

Do not disconnect
under load

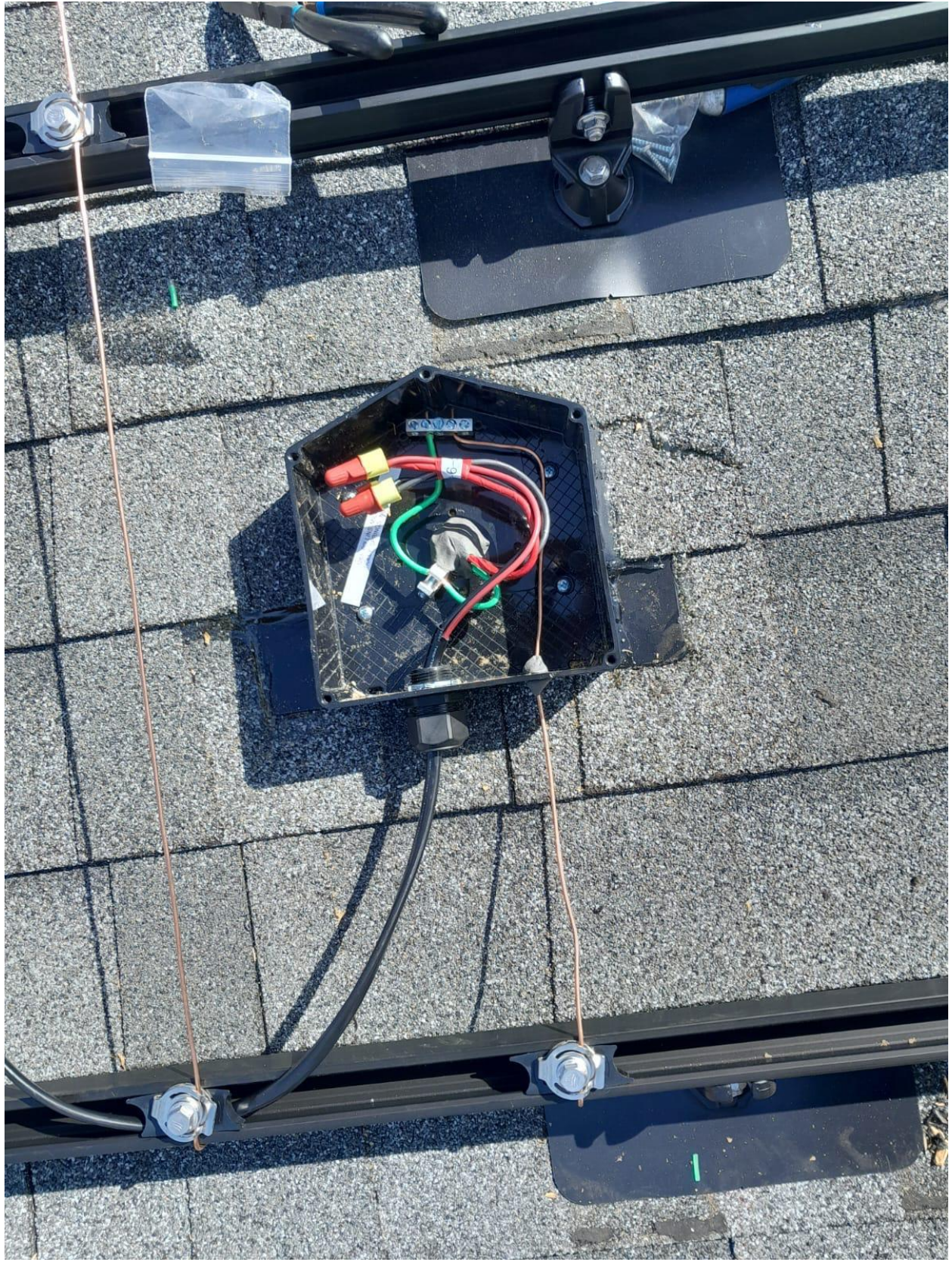
162







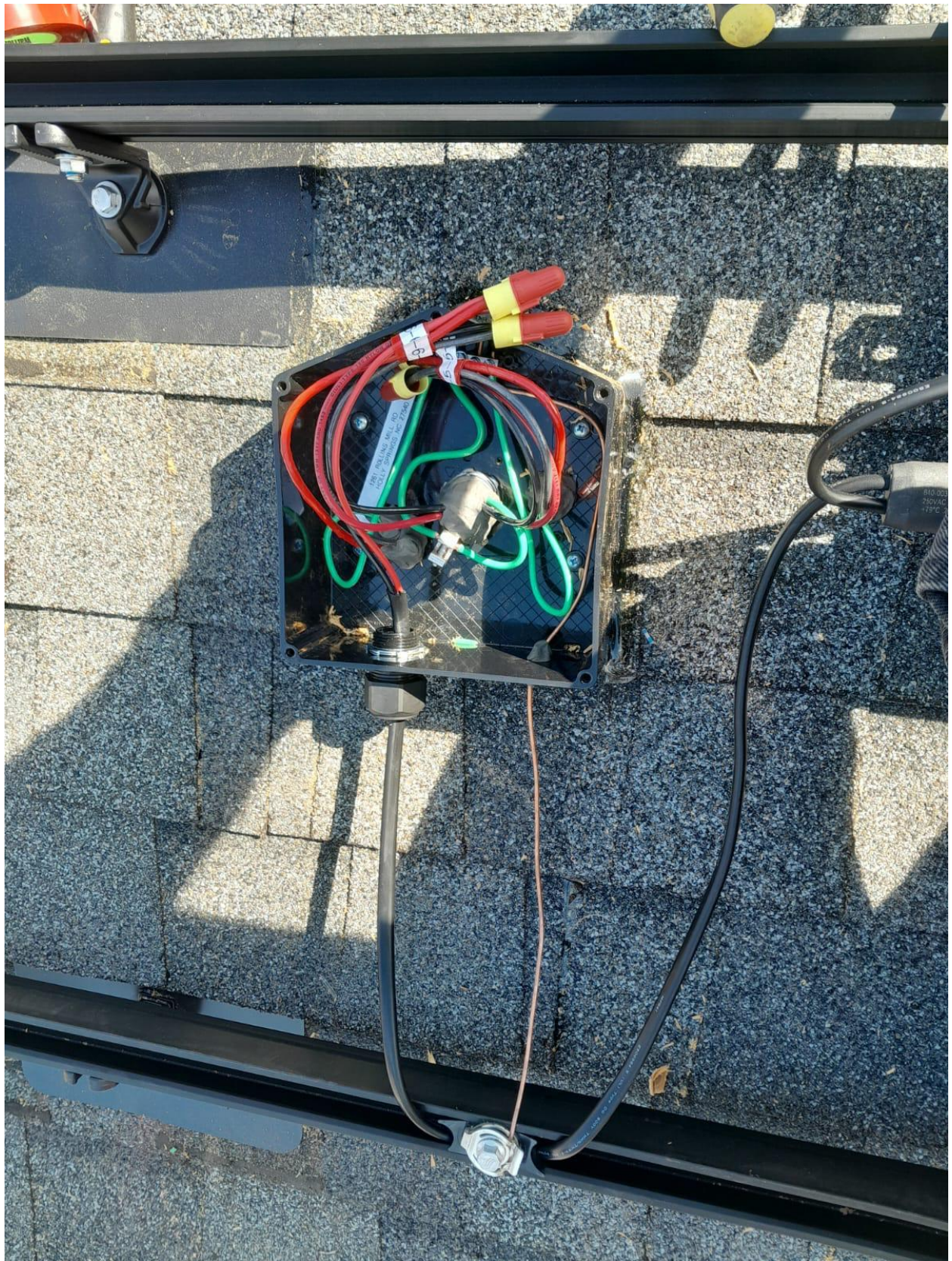


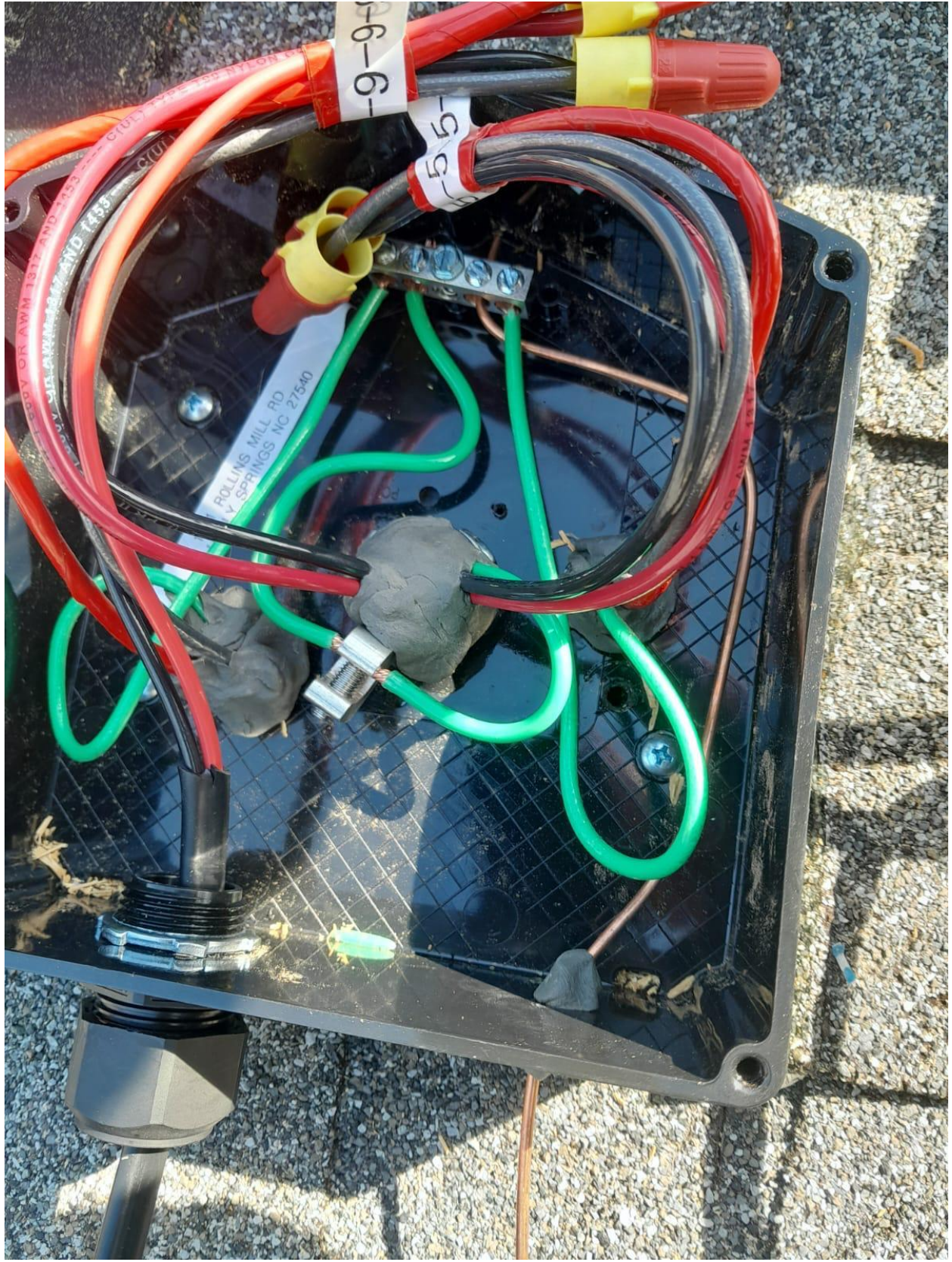














1

EZ
SOLAR

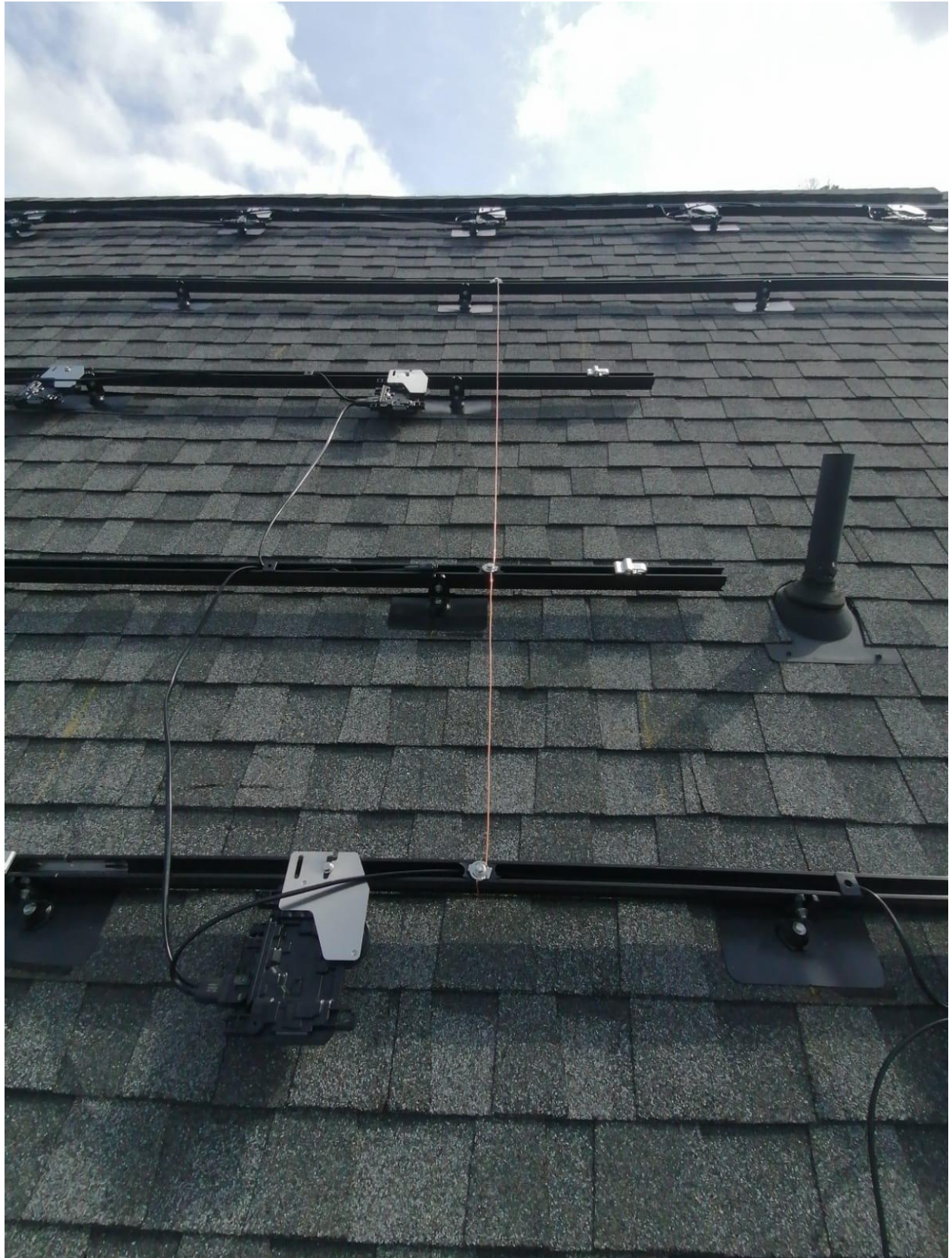
1261 ROLLINS MILL RD
HOLLY SPRINGS NC 27540

JB-1.2

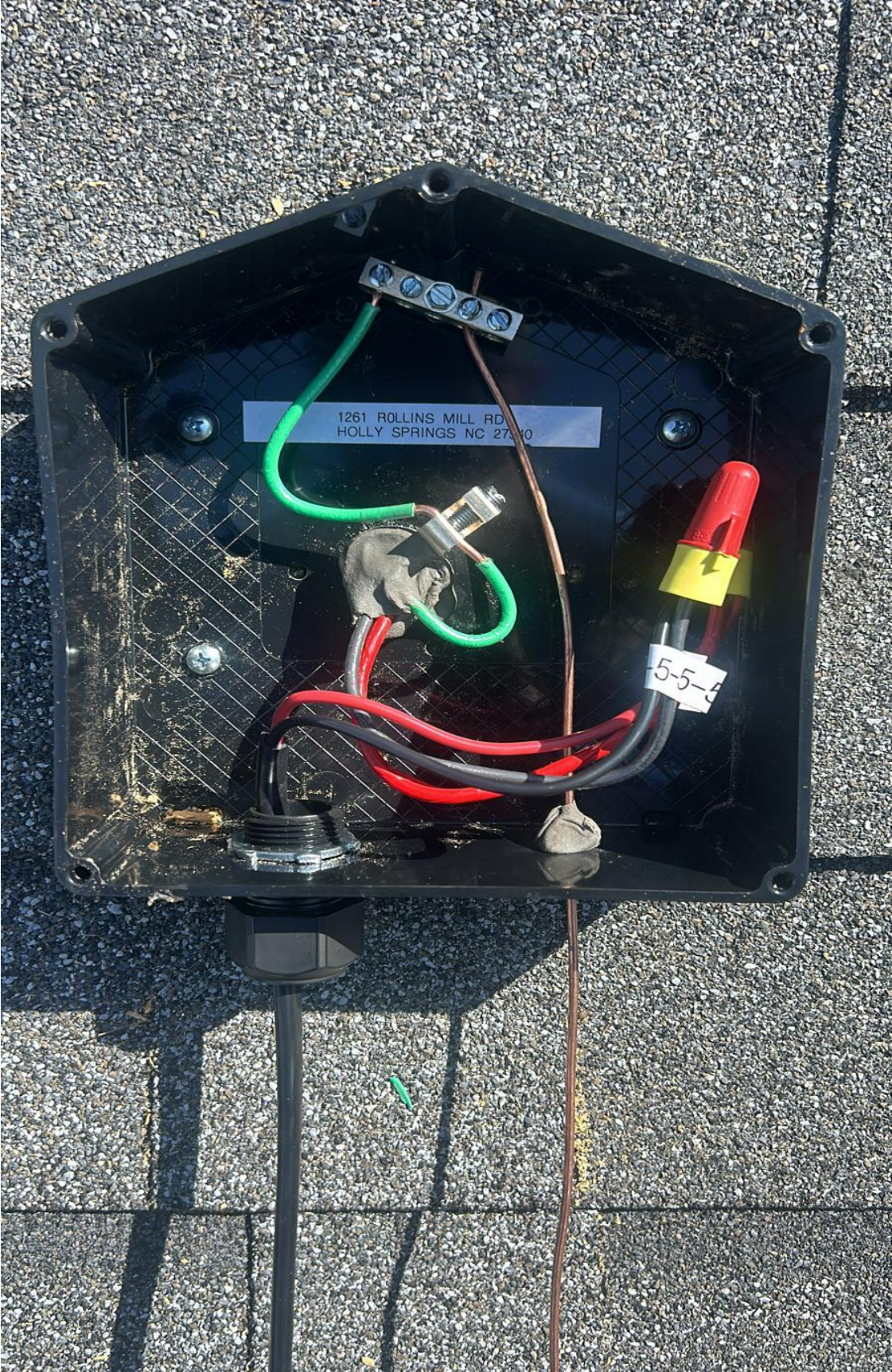
Patents: ezsolarsolar.com/patents

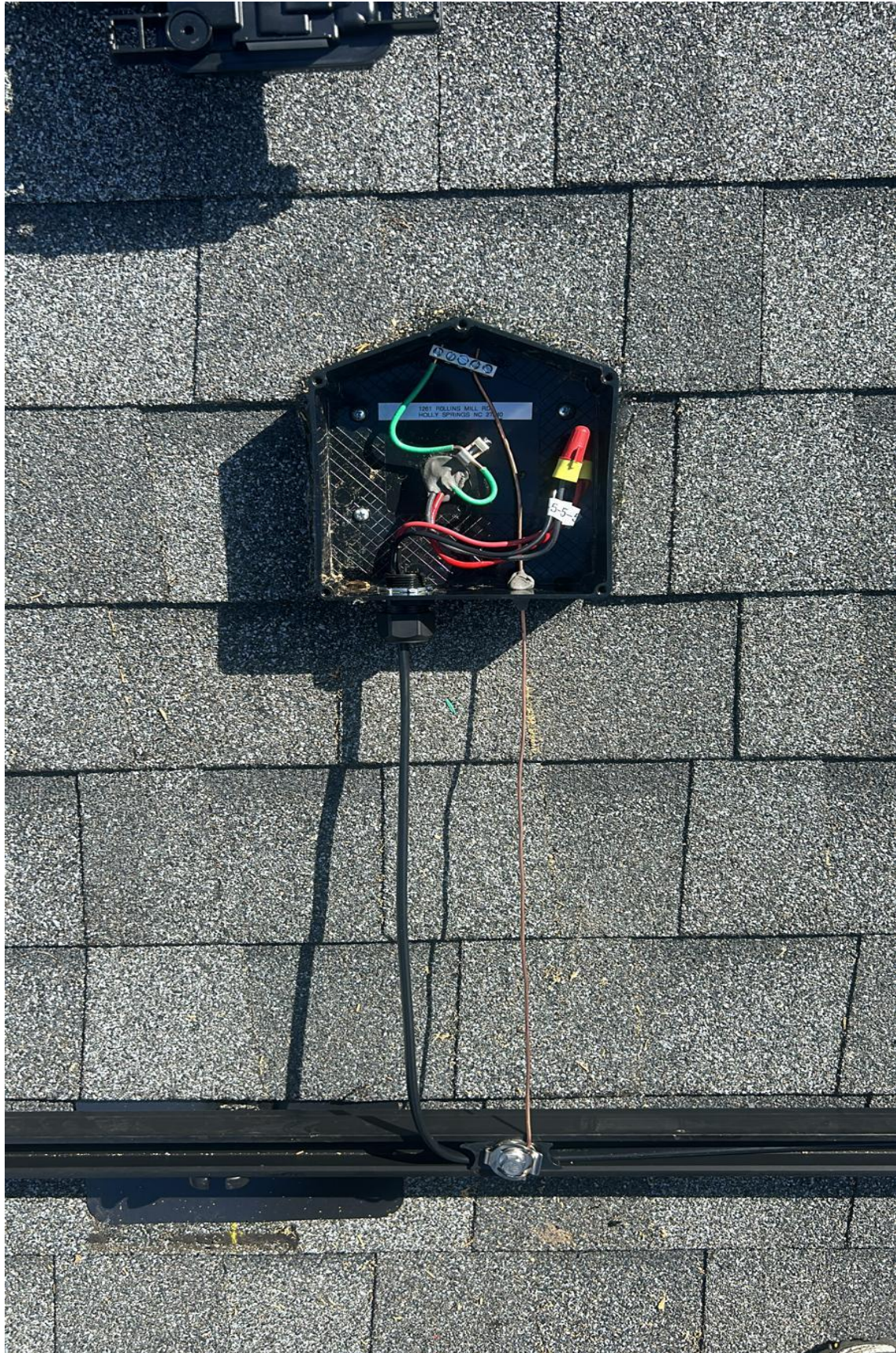














3

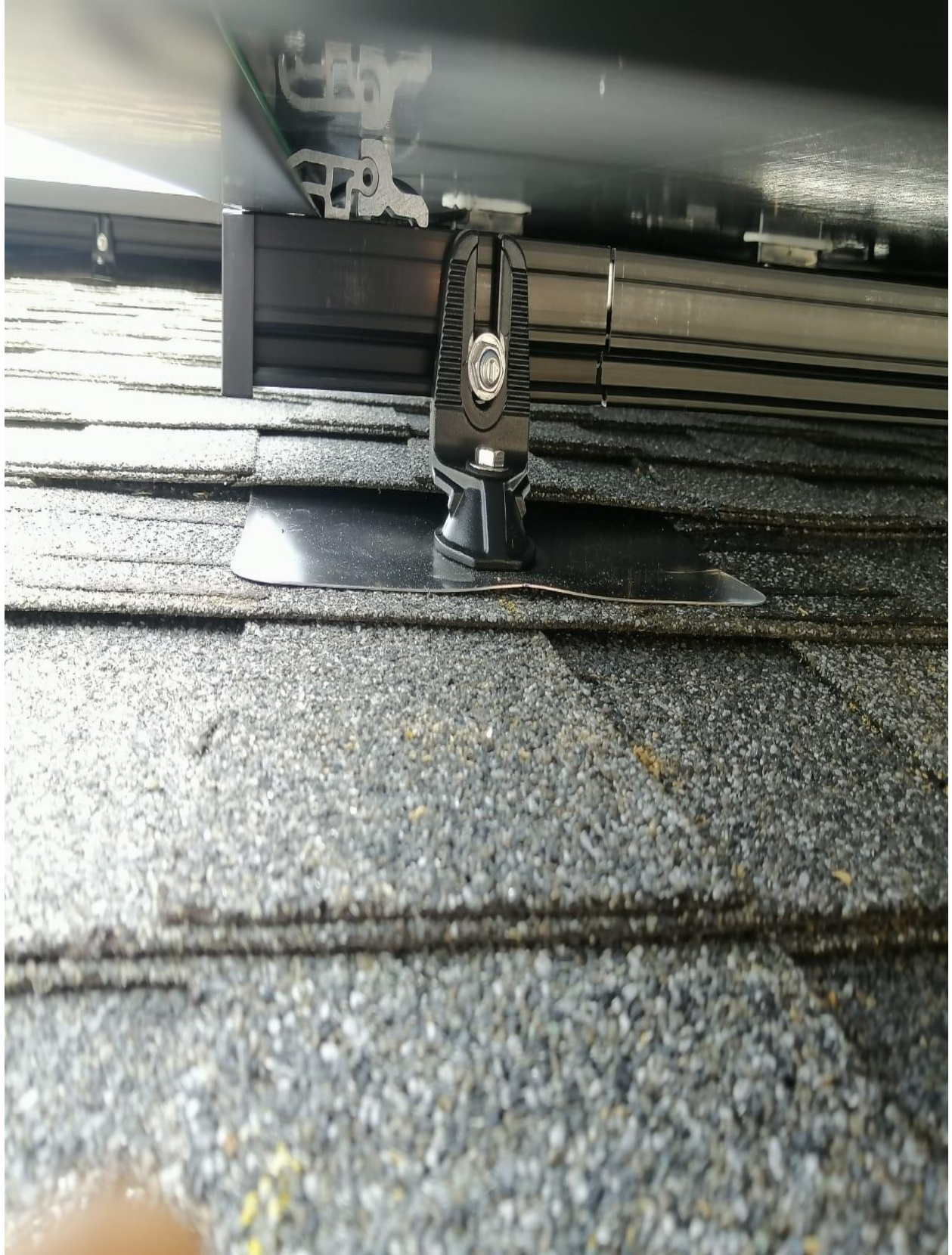
EZZ
SOLAR

1261 ROLLINS MILL RD
HOLLY SPRINGS NC 27540

JB-1.2

Patents: us, eu, jp, cn, kr, in, au, ca, br, pt, es, it, fr, de, uk, us, tw, hk, sg, my, th, ph, vn, id, fi, se, no, dk, pl, cz, hu, ro, bg, gr, tr, il, is, ie, pt, es, it, fr, de, uk, us, tw, hk, sg, my, th, ph, vn, id, fi, se, no, dk, pl, cz, hu, ro, bg, gr, tr, il, is, ie



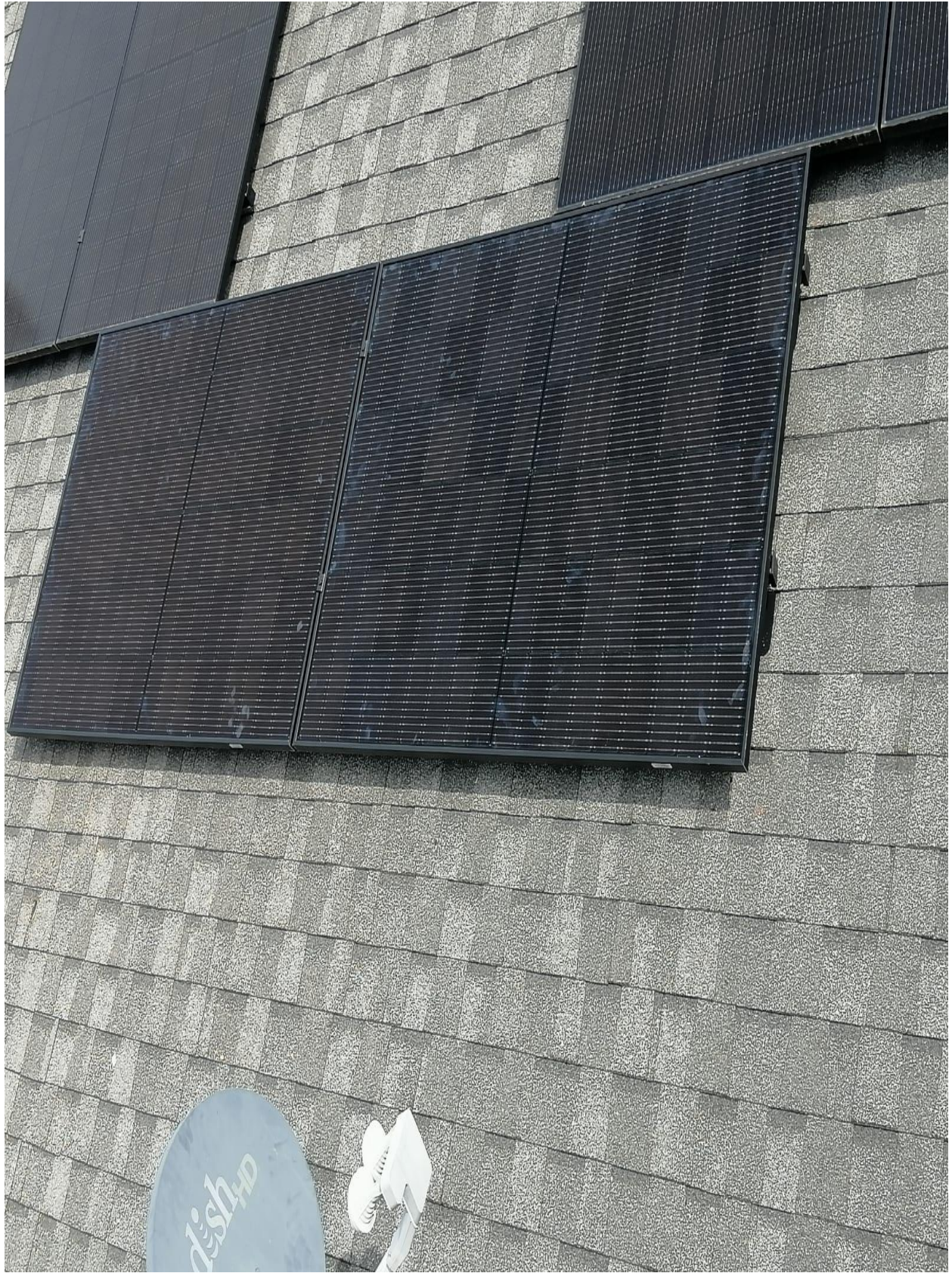












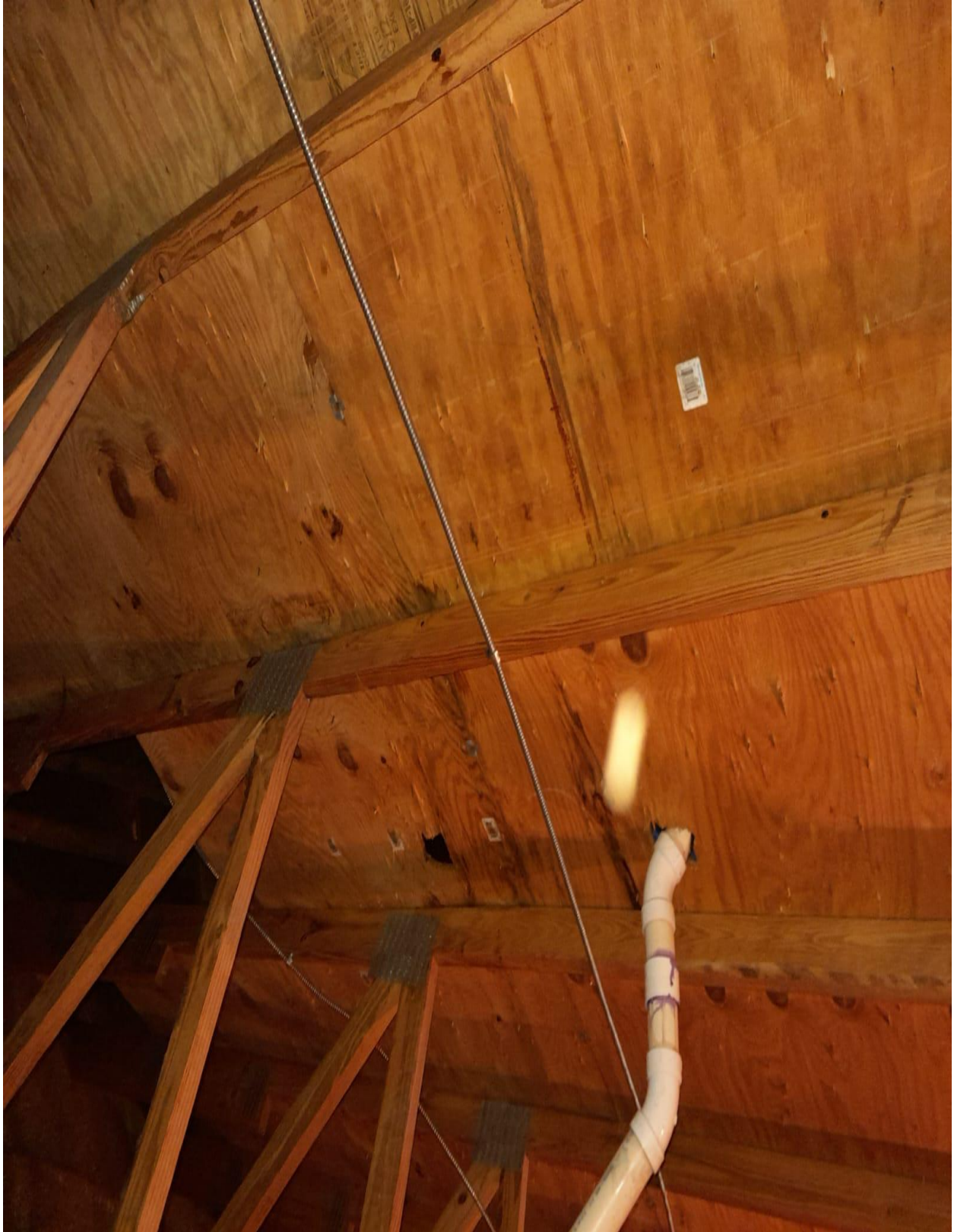






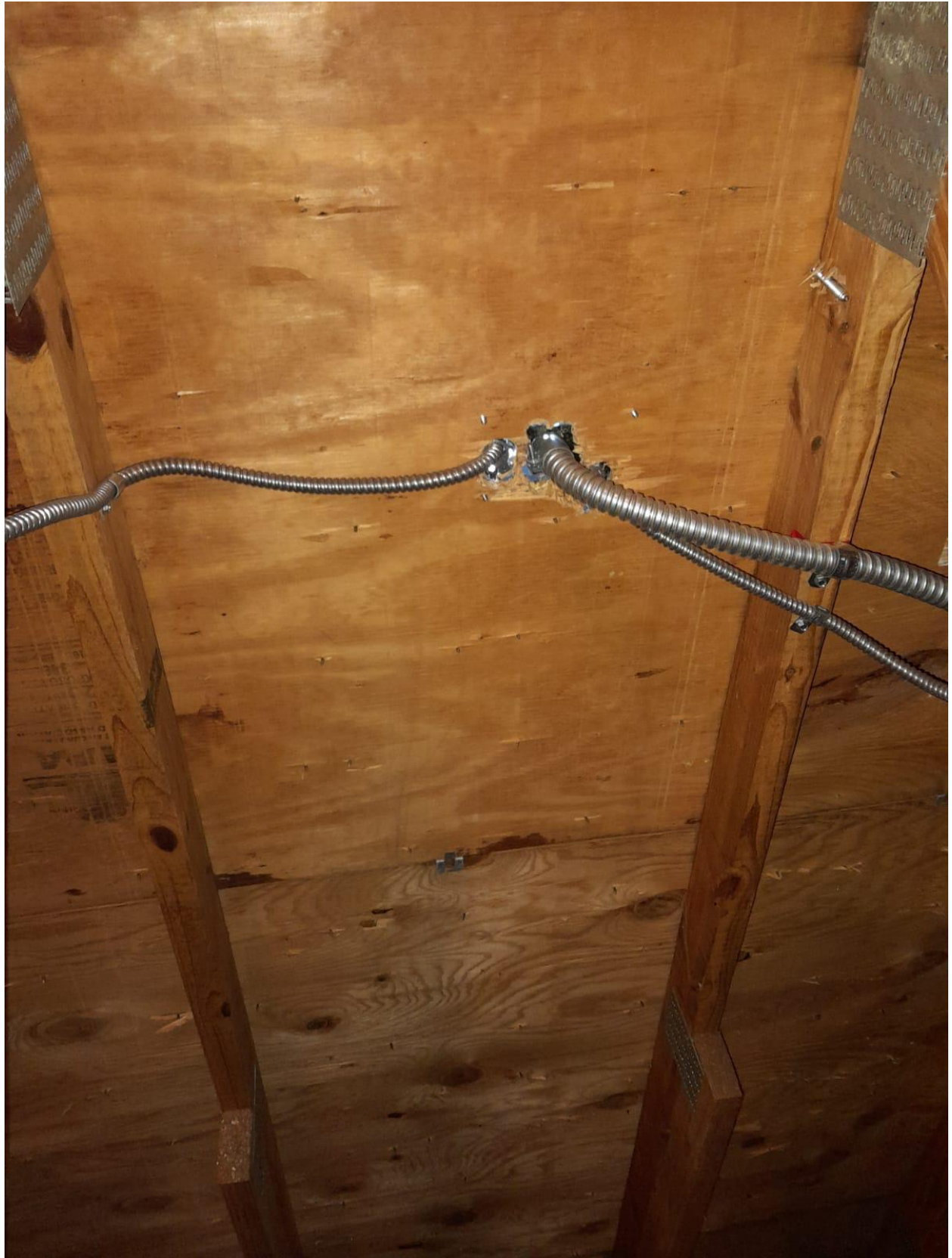






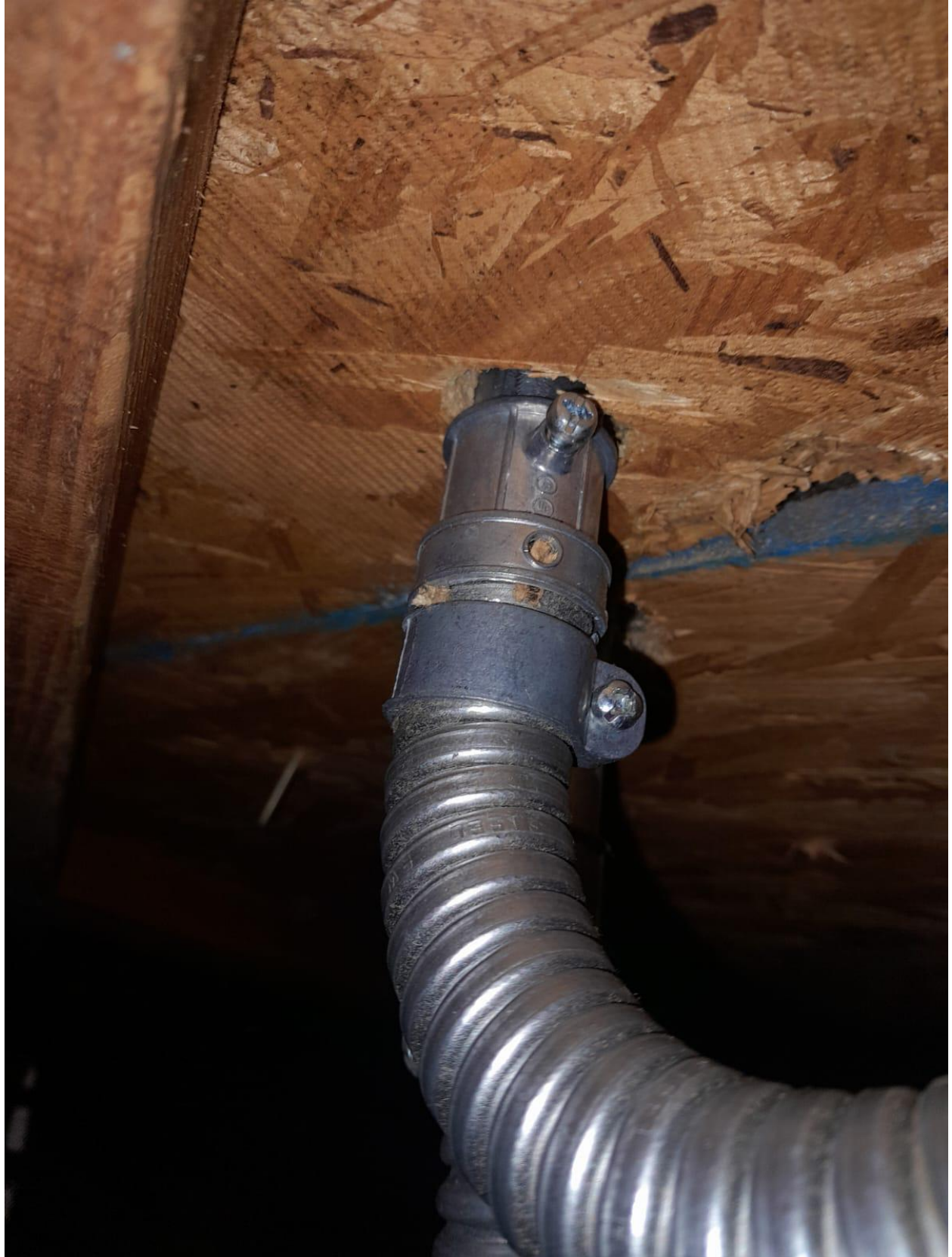


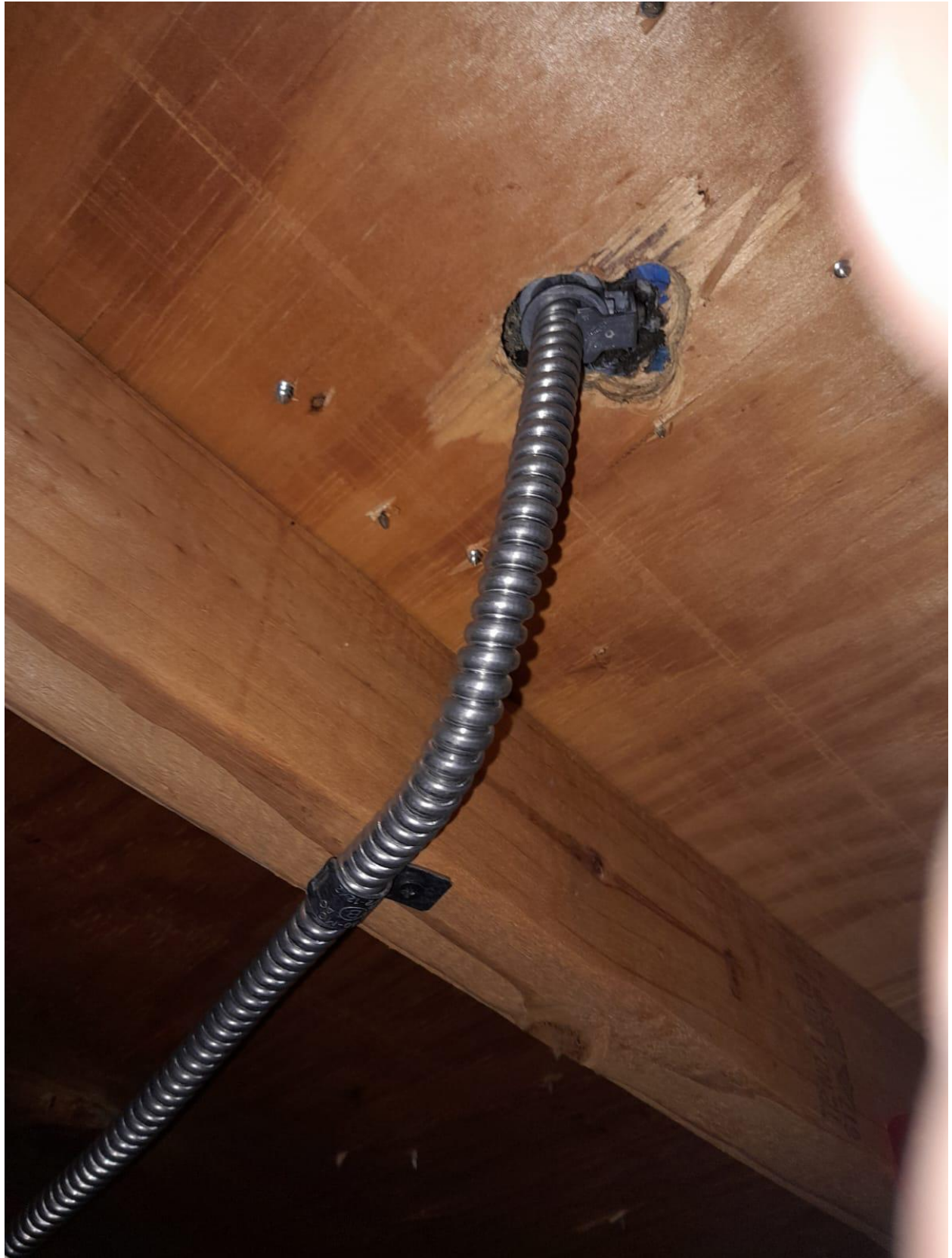




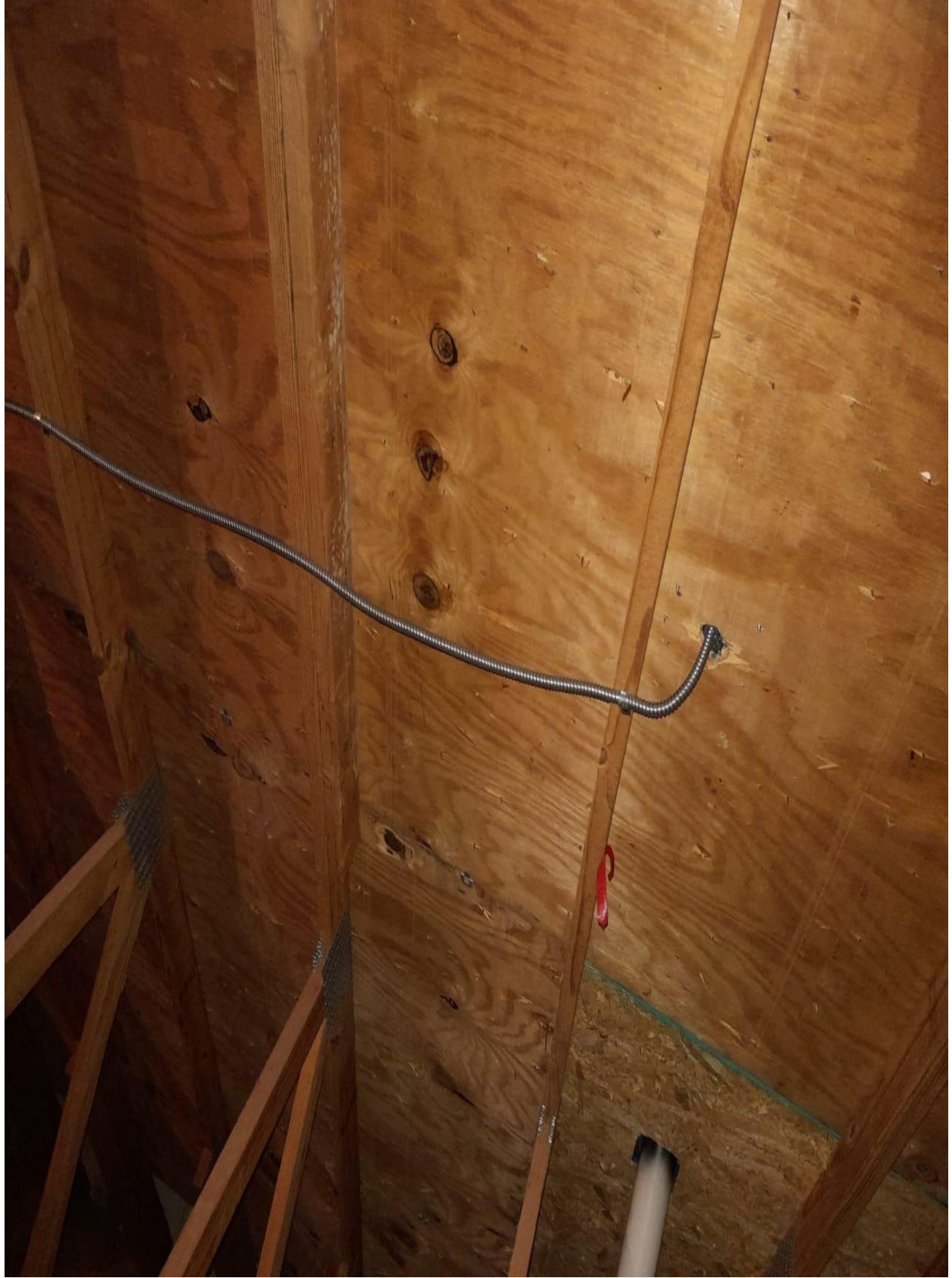










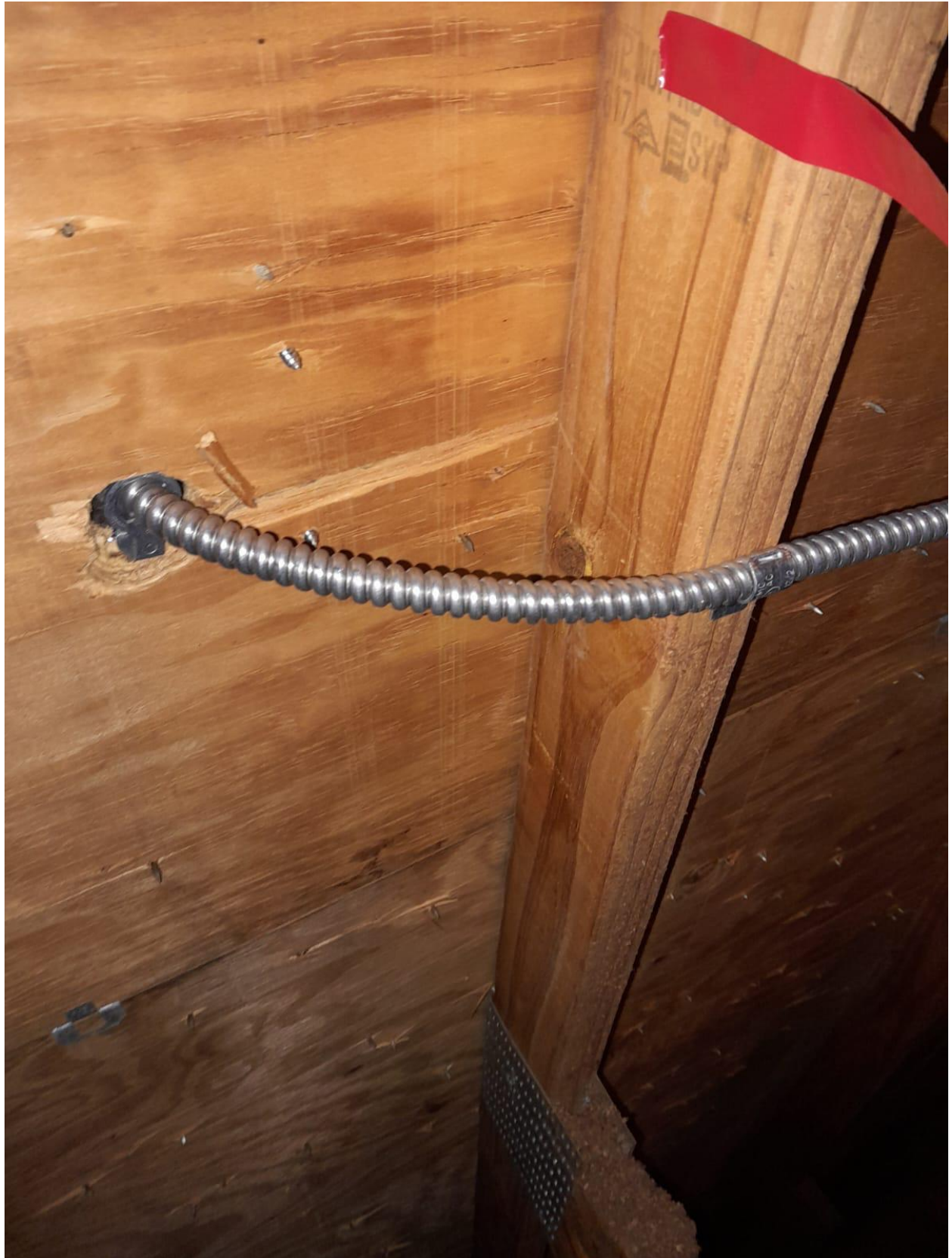




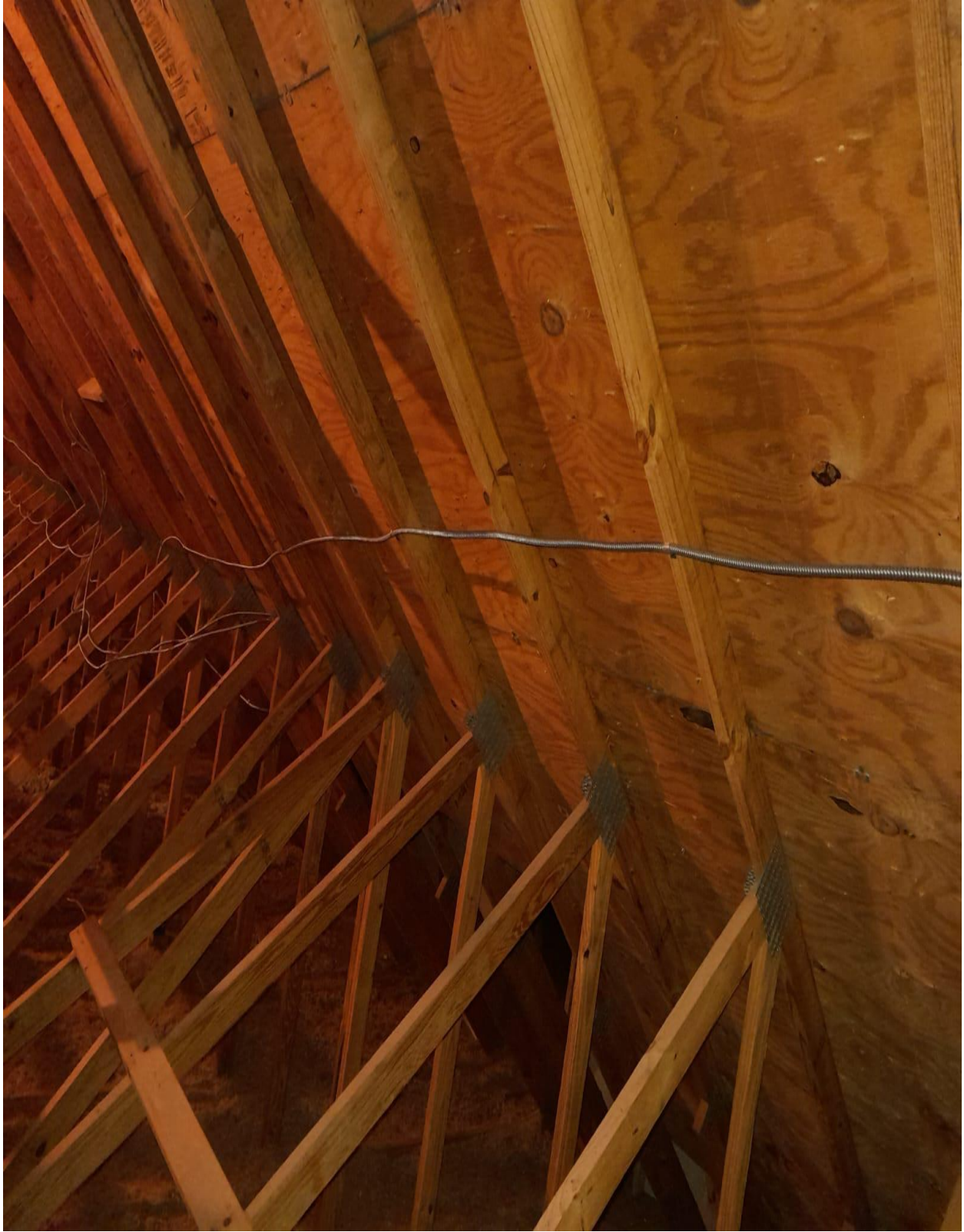
















E121483
3/4" COVER

E121483
3/4" COVER

ALAN WIRE TO AWS



