



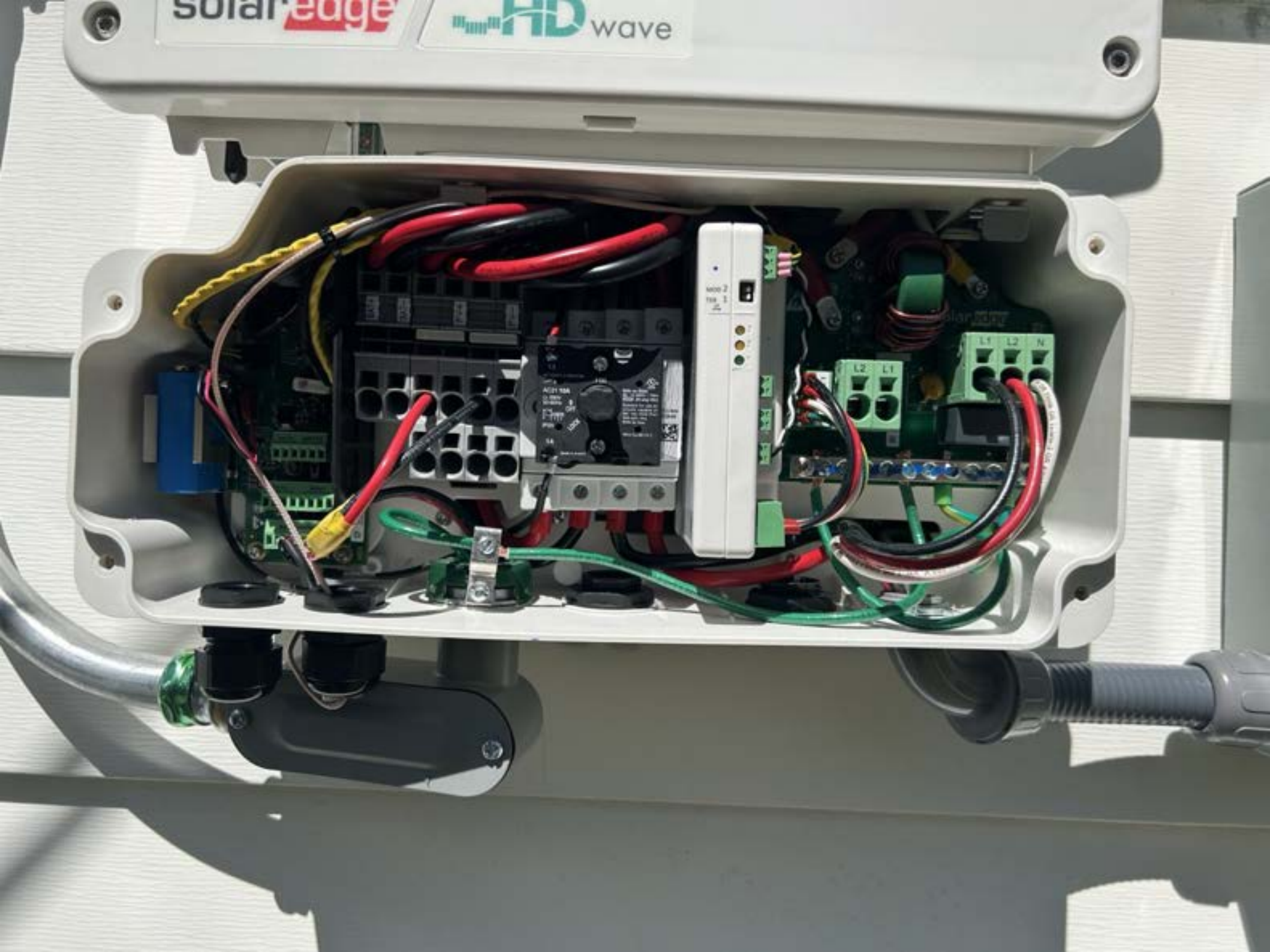






Solar edge

FD wave















ALTAIC POWER SOURCE

# AC DISCONNECT

PHOTOVOLTAIC SYSTEM  
POWER SOURCE

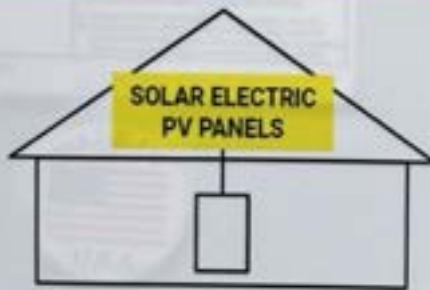
RATED AC OUTPUT CURRENT  AMPS  
NOMINAL OPERATING AC VOLTAGE  VOLTS

30 A, 240 V~, 60 Hz

Complete ratings inside  
Valeurs nominales complètes à l'intérieur  
Información completa de capacidades en el interior

Further instructions inside  
Autres instructions à l'intérieur

## SOLAR PV SYSTEM EQUIPPED WITH RAPID SHUTDOWN



TURN RAPID SHUTDOWN SWITCH TO THE "OFF" POSITION TO SHUT DOWN PV SYSTEM AND REDUCE SHOCK HAZARD IN THE ARRAY

RAPID SHUTDOWN  
SWITCH FOR  
SOLAR PV SYSTEM

ON

**! WARNING**

ELECTRIC SHOCK HAZARD

TERMINALS ON THE LINE AND  
LOAD SIDES MAY BE ENERGIZED  
IN THE OPEN POSITION

OFF



















 **CAUTION**   
SOLAR ELECTRIC SYSTEM CONNECTED

 **WARNING**  
DUAL POWER SUPPLY  
SOURCES: UTILITY GRID  
AND PV SOLAR  
ELECTRIC SYSTEM

 **WARNING**  
POWER SOURCE  
OUTPUT CONNECTION  
DO NOT RELOCATE THIS  
OVERCURRENT DEVICE

**CAUTION:**  
MULTIPLE SOURCES OF POWER  
THE PV DISCONNECT IS LOCATED  
BESIDE THE SERVICE METER

**RAPID SHUTDOWN  
SWITCH FOR  
SOLAR PV SYSTEM**

MAIN

OFF ON

OFF ON

MAIN

Range

20A

20A

PLATE LIGHTS

20A

DR

20A

Heat

20A

Heat

20A

Water

20A

Hot tub

20A

OFF

20A

20A

20A

20A

20A

20A

20A

20A

DRYER

HOUSE

Hall

Light

HOOD

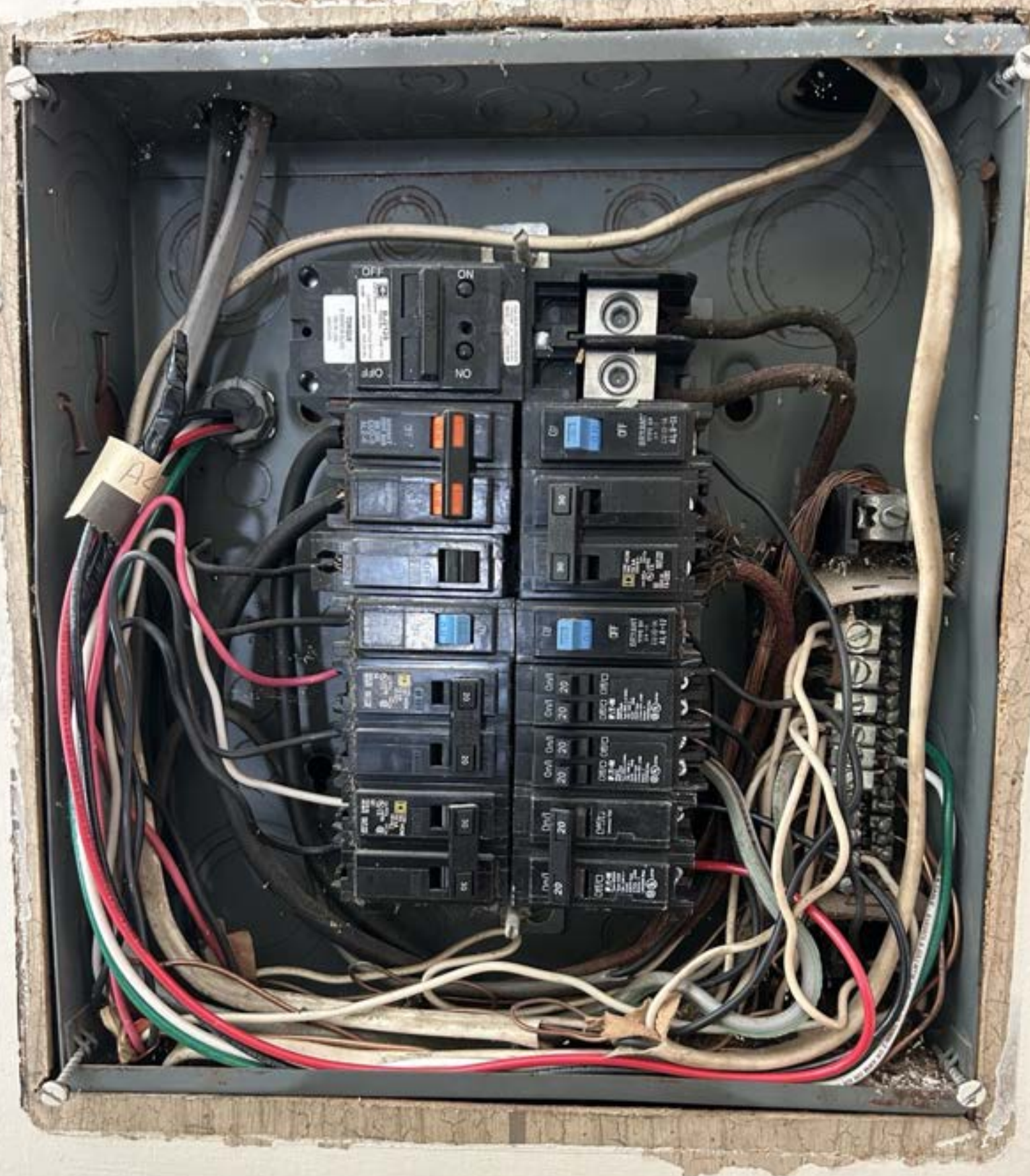
Bedroom

Master

Dishwasher

SOLAR PV BREAKER  
BREAKER IS BACKED  
DO NOT RELOCATE









OFF

ON



**BJT2125**  
TYPE BJ TYPE CSJ

**CURRENT INTERRUPTING RATING**  
10,000 AIC 120/240 VAC CU-AL

**TORQUE**  
2-300MCM AL/CU  
180 IN. LBS.  
A003733H01

125

GE/NO. LAB. INC. LISTED CIRCUIT BREAKER  
2 POLE UNIT 125 AMP. SIZE NO. M-1540  
AIC CTL 10000/240VAC 100240VAC

OFF

ON



**BRYANT**  
TYPE BR  
BR 260  
CU2-8  
AL2-6

OFF

**COMMON TRIP**

OFF

ON

ON

ON





On/I 20

Off/O

**T-C-N**  
BR220  
Type BR220 & DNPL  
120 / 240 V ~  
CUL/AL  
NACR Type  
2 Pole Unit J-466  
E7610 - T  
LR45558 Disj.  
UL LISTED

On/I 20

Off/O  
Common Trip

**T-C-N**  
Type BR220  
Type C220  
120 / 240 V ~  
CUL/AL  
NACR Type  
2 Pole Unit J-466  
E7610 - T  
LR45558 Disj.  
UL LISTED

30  
COMMON TRIP

150 NYLON GR 7MMZ-11



**solar** **EDGE** SE3800H-US  
 Grid Support Utility Interactive Non-Isolated  
 Photovoltaic Inverter With Stand Alone Mode

Operating Voltage Range	270 - 480 Vdc
Max Input Current	21 Adc
Max Continuous Output Power Grid connected	3800Wac
Max Continuous Output Power Stand Alone	1800Wac
Voltage Min - Nom - Max	211 - 240 - 254 Vac
Max Continuous Output Current Grid connected	18Aac
Max Continuous Output Current Stand Alone	22Aac
Max Output Fault Current	72 Aac
Max Utility Backfeed Current	0 Aac
Frequency Min - Nom - Max	59.3 - 60.0 - 60.5 Hz
Output Power Factor	+/- 0.85 - 1
Max Ambient Temperature	60 C
Enclosure	IP65/Type 4

With integrated ground fault protection per NEC 690.25 (C)  
 Type 1 Photovoltaic Arc-Fault Circuit Protection




WiFi Password:  
 To-41Phy  
 Activation:  
 Nw00 +94V 1086 Puv2 Stru TwqV 6E=  
 WiFi MAC:  
 84:08:C5:49:C0:25  
 ZigBee MAC:

PN: SE3800H-USMN88L14  
 SN: SV0623-0750134AB-55



**solar** **edge** 

**PHOTOVOLTAIC RAPID  
 SHUTDOWN SYSTEM**

**solar** **edge** **750134AB-55**




ETL LISTED  
 CONFORMS TO  
 ANSI/UL 1741  
 CERTIFIED TO  
 CAN/CSA  
 C22.1 NO. 307

Intertek  
 4004590

Contains FCC ID: 2AGP7-PLNXX, IC: 20816-PNXX. The enclosed device complies with part 25 of the FCC Rules. Operation is subject to the following two conditions: (1) This device may not cause harmful interference and (2) This device must accept any interference received, including interference that may originate from other devices.

Made in Vietnam





UL LISTED  
ELECTRICAL

3/4" COVER  
11





























Autumn Murphy  
165 S Alston ST,  
Nashville, NC 27956

8 Panels

WARNING

CAUTION  
DO NOT TOUCH THE SURFACE OF THE PANELS  
OR THE WIRING. THEY ARE HOT.



UL LISTED  
UL 1741 EDITION 10/10/10

UL LISTED  
UL 1741 EDITION 10/10/10

UL LISTED  
UL 1741 EDITION 10/10/10

UL LISTED  
UL 1741 EDITION 10/10/10

UL LISTED  
UL 1741 EDITION 10/10/10

UL LISTED  
UL 1741 EDITION 10/10/10

UL LISTED  
UL 1741 EDITION 10/10/10

UL LISTED  
UL 1741 EDITION 10/10/10

UL LISTED  
UL 1741 EDITION 10/10/10

UL LISTED  
UL 1741 EDITION 10/10/10

UL LISTED  
UL 1741 EDITION 10/10/10

UL LISTED  
UL 1741 EDITION 10/10/10

UL LISTED  
UL 1741 EDITION 10/10/10

UL LISTED  
UL 1741 EDITION 10/10/10

UL LISTED  
UL 1741 EDITION 10/10/10

UL LISTED  
UL 1741 EDITION 10/10/10

UL LISTED  
UL 1741 EDITION 10/10/10

UL LISTED  
UL 1741 EDITION 10/10/10

UL LISTED  
UL 1741 EDITION 10/10/10

UL LISTED  
UL 1741 EDITION 10/10/10

UL LISTED  
UL 1741 EDITION 10/10/10

UL LISTED  
UL 1741 EDITION 10/10/10

UL LISTED  
UL 1741 EDITION 10/10/10

UL LISTED  
UL 1741 EDITION 10/10/10

UL LISTED  
UL 1741 EDITION 10/10/10

UL LISTED  
UL 1741 EDITION 10/10/10

UL LISTED  
UL 1741 EDITION 10/10/10

UL LISTED  
UL 1741 EDITION 10/10/10

UL LISTED  
UL 1741 EDITION 10/10/10

UL LISTED  
UL 1741 EDITION 10/10/10

UL LISTED  
UL 1741 EDITION 10/10/10

UL LISTED  
UL 1741 EDITION 10/10/10

UL LISTED  
UL 1741 EDITION 10/10/10

UL LISTED  
UL 1741 EDITION 10/10/10

UL LISTED  
UL 1741 EDITION 10/10/10

UL LISTED  
UL 1741 EDITION 10/10/10

UL LISTED  
UL 1741 EDITION 10/10/10

UL LISTED  
UL 1741 EDITION 10/10/10

UL LISTED  
UL 1741 EDITION 10/10/10

UL LISTED  
UL 1741 EDITION 10/10/10

UL LISTED  
UL 1741 EDITION 10/10/10



(UL) PV Wire 12AWG 105  
2000V Sun Res -40°C  
Dry and 90°C Wet  
1000V or 2000V  
Sun Res -40°C  
VW-1  
HONGLIN

**CAUTION**  
HOT SURFACES-TO REDUCE THE RISK OF BURNS-DO NOT TOUCH. RISK OF ELECTRIC SHOCK-WHEN THE PHOTOVOLTAIC ARRAY IS EXPOSED TO LIGHT, IT SUPPLIES A DC VOLTAGE TO EQUIPMENT. COVER PV MODULE WITH OPAQUE MATERIAL BEFORE CONNECTING OR DISCONNECTING THIS OF DURING FAULT, ZERO CURRENT IS SOURCED INTO DC ARRAY BY CONVE

**WARNING** ELECTRIC SHOCK HAZARD. THE DC CONDUCTOR SYSTEM ARE UNGROUNDED AND MAY BE ENERGIZED.

**AVERTISSEMENT**  
RISQUE DE CHOC ELECTRIQUE: QUAND LE PHOTOVOLTAIQUE EST EXPOSE A LA LUMIERE, IL FOURNIT UNE TENSION CC EST FOURNIE A CET EQUIPEMENT. COUVER LE MODULE PHOTOVOLTAIC AVEC UN MATERIEAU OPAQUE AVANT DE BRANCHER OU DE DEBRANCHER CE CABLE. EN CAS DE DEFAILLANCE DANS LE CABLE, UN COURANT NUL EST INJECTE DANS LE C

Do Not Remove

180FE52F-3B



SolarEdge Technologies Ltd.  
SolarEdge Technologies GmbH/  
Werner-Edelmann-Str. 5/81829 Munich/Germany



SolarEdge Technologies Ltd.  
Power Optimizer  
SolarEdge Technologies GmbH/  
Werner-Edelmann-Str. 5/81829 Munich/Germany

PHOTOVOLTAIC











303

CE















