









FC
Power Optimizer
ENT
SOLAR



annon Geer
146 Trenton Pl, Conway
NC
S1-14d-14p









FMC22B
GETLUS



Moon H6 Treator

EPPSON

FC





Do Not Remove



CAUTION

HOT SURFACES TO REDUCE THE RISK OF BURNS DO NOT TOUCH PHOTOVOLTAIC ARRAY IN THE LIGHT. IT SUPPLIES A DC VOLTAGE TO EQUIPMENT. COVER PV MODULE WITH OPAC OR MATERIAL BEFORE CONNECTING OR DISCONNECTING THIS OPTIMIZER DURING INSTALL. ZERO CURRENT IS SOURCED INTO DC ARRAY BY CONVERTER.



SolarEdge Technologies Ltd
SolarEdge Technologies GmbH
Werner-Eckert-Strasse 4/91825
Munich/Germany

WARNING ELECTRIC SHOCK HAZARD. THE DC CONDUCTORS OF THIS PHOTOVOLTAIC SYSTEM ARE UNSHROUNDED AND MAY BE ENERGIZED.

AVERTISSEMENT

RIQUE DE CHOC ELECTRIQUE. QUAND LE CHAMP PHOTOVOLTAIQUE EST EXPOSE A LA LUMIERE, UNE TENSION DE EST FOURNIE A CET EQUIPEMENT. SURFACES CHAUDES. NE PAS TOUCHER. NE PAS REPARER LES RIGIDES DE BRULURES LE COURANT DE RETOUR INJECTE PAR LE CONVERTISSEUR EN TOUJOURS NEAL.

Jinko Sales
 Jinko Solar Co., Ltd.
 1872 18th Road, Beijing, China
 100085, China
 www.jinkosolar.com

PHOTOVOLTAIC MODULE
 Modules assembled in the USA from solar cells made in Vietnam

Solar Module Type: JKD330M-72HL-V

Maximum Power (P _{max})	355W
Power Tolerance	±5%
Maximum Power Voltage (V _{mp})	29.25V
Maximum Power Current (I _{mp})	12.14A
Open Circuit Voltage (V _{oc})	40.81V (V _{oc})
Short Circuit Current (I _{sc})	13.54A (I _{sc})
Maximum System Voltage	1500VDC
Maximum Series Fuse Protection Voltage (V _{oc})	1500VDC
Operating Temperature	-40°C ~ +85°C
Protection Class	IP67
Anti-Piracy Mark	See 10/11/12/13/14/15/16/17/18/19/20/21/22/23/24/25/26/27/28/29/30/31/32/33/34/35/36/37/38/39/40/41/42/43/44/45/46/47/48/49/50/51/52/53/54/55/56/57/58/59/60/61/62/63/64/65/66/67/68/69/70/71/72/73/74/75/76/77/78/79/80/81/82/83/84/85/86/87/88/89/90/91/92/93/94/95/96/97/98/99/100
Weight	22.5kg
Dimension	2108mm x 1002mm x 40mm
STC	1000W/m ² , 25°C
Current Rating	15A

System for Class Rating: See installation instructions for installation requirements to achieve a specified System for Class Rating with this Product. The fire rating is Class C in Canada.

WARNING
 ONLY qualified personnel should install or perform maintenance work on these modules.
 BE AWARE of dangerous high DC voltage when connecting modules.
 DO NOT damage or scratch the rear surface of the module.
 See module literature for appropriate safety instructions.

AVERTISSEMENT
 SEUL les professionnels peuvent installer et effectuer les travaux d'entretien sur ces modules.
 PRÉVENIR DANGER de haute tension continue lorsque les modules sont connectés.
 NE PAS endommager ou rayer la surface arrière des modules.
 Voir les notices des modules pour les instructions de sécurité appropriées.
 Pour les conseils, voir les notices des modules pour les instructions de sécurité appropriées.
 Conditions et avis de responsabilité en vigueur.

UL LISTED
 CE







CENTAUR LIQUID TIGHT CONDUIT PHOTOVOLTAIC POWER SOURCE



PHOTOVOLTAIC POWER SOURCE









DANGER / PELIGRO

HAZARD OF ELECTRICAL SHOCK OR BURN
SERVICE BY UTILITY AUTHORIZED PERSONNEL ONLY
DO NOT PAINT OVER OR REMOVE THIS LABEL
PELIGRO DE DESCARGA ELECTRICA O QUEMADURA
SOLAMENTE PERSONAS AUTORIZADAS DE LA COMPAÑIA
ELECTRICA PUEDEN MANTENARLO
NO PINTES ENCIMA NI REMUEVA ESTA ETIQUETA

CAUTION
SOLAR ELECTRIC SYSTEM CONNECTED

CONTAINS FCC ID: R195019186 CONTAINS IC: 5294A-0019186
Landis+Gyr **GRIDSTREAM RF**
9097A098

00000000

WARNING
DUAL POWER SUPPLY
SOURCES: UTILITY GRID
AND PV SOLAR
ELECTRIC SYSTEM

Type **FOCUS AXRe-SD**
FORM 2S CL200 240V 3W 60Hz TA=30 Kh 7.2
CENTRAL EMC
159 384 648
934 0220
Landis+Gyr

PHOTOVOLTAIC
SYSTEM kWh METER

NIX
10/1/202

solaredge

StorEdge Connection Unit

Max DC Voltage (PV/Battery)
Max DC Current (PV)
Max Continuous DC Current (Battery)
Max AC Voltage
AC-Single Phase Frequency
Max AC Current (Grid)

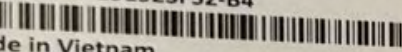
480 Vdc
51 Adc
31 Adc
264 Vac
50/60 Hz
40 Aac

For more details refer to the installation guide
Patent marketing notice: see WWW.SOLAREEDGE.COM/patent

DCD-1PH-US-P3H-F-1

PN: 

SV3423-191923F52-B4

SN: 

Made in Vietnam



Intertek
4004590



solaredge

StorEdge Connection Unit

Max AC Current (Smart EV Charger)
Max Continuous Output Power (Smart EV Charger)

40Aac
9600W

Ambient Temperature:
Enclosure Rating:

-40°C ..60°C
IP65/ Type 4X

For more details refer to the installation guide
Patent marketing notice: see WWW.SOLAREEDGE.COM/patent

Use 90° C copper PV wires only.

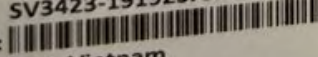
Revenue Grade ANSI C12.20

PHOTOVOLTAIC RAPID SHUTDOWN SYSTEM

DCD-1PH-US-P3H-F-1

PN: 

SV3423-191923F52-B4

SN: 

Made in Vietnam



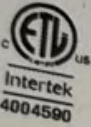
Intertek
4004590



solar edge SE6000H - US
**Grid Support Utility Interactive
Non - Isolated Photovoltaic Inverter**

Operating Voltage Range 270 - 480Vac
Max Input Current 16.5Aac
Max Continuous Output Power 5000Wac @ 208V 6000Wac @ 240V
Voltage Min - Nom - Max 183 - 208 - 228Vac
211 - 240 - 264Vac
Max Continuous Output Current 24Aac @ 208V 25Aac @ 240V
Max Output Fault Current 72Aac
Max Utility Backfeed Current 0Aac
Frequency Min - Nom - Max 59.3 - 60.0 - 60.5Hz
Output Power Factor +/- 0.85 - 1
Max Ambient Temperature 80 C
Enclosure IP65 / Type 3R
With Integrated ground fault protection per NEC 690.35 (C)
Type 1 Photovoltaic Arc - Fault Circuit - Protection

WI - FI Password: Fq4e9DCa
Activation: f8X XuA/ +rE8 5yaL Ue +g BynZ 5Ee =
WIFI MAC:
84:D6:C5:81:09:86
ZigBee MAC:



PN: SE6000H - USSNBBL14
SN: SV3423 - 0750B1DD6 - 73

solar edge



PHOTOVOLTAIC RAPID
SHUTDOWN SYSTEM

solar edge



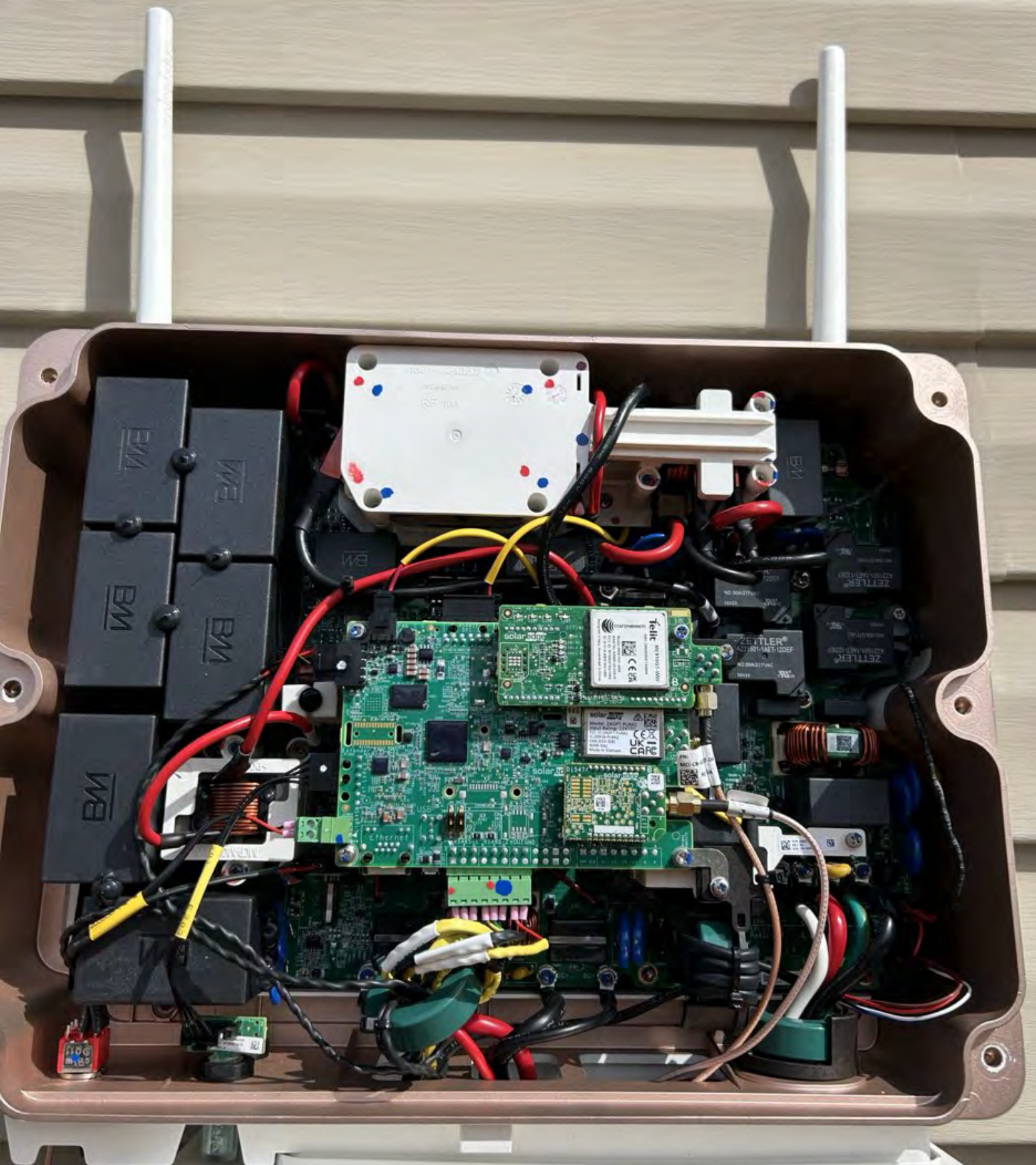
ETL LISTED
CONFORMS TO
ANSI/UL 1741
SAFETY TO



Intertek

750B1DD6-73





solar**edge**

 HD wave



E491006
3/4 COVER

⚠ DANGER
HAZARDOUS VOLTAGE. WILL CAUSE
SEVERE INJURY OR DEATH.
Do not power up the equipment before working.
**TENSION DANGEREUSE. PEUT CAUSER
DES BLESSURES GRAVES OU LA MORT.**
Ne pas l'alimentation électrique de cet équipement avant
de travailler dessus.

⚠ PELIGRO
VOLTAGE PELIGROSO. CAUSA HERIDAS
SEVERAS O MUERTE.
No alimente el suministro de energía que alimenta este
equipo antes de trabajar en él. No toque los cables.

1A 2A 3A 4A 5A 6A 7A 8A 9A 10A 11A 12A 13A 14A 15A 16A 17A 18A 19A 20A



1B 2B 3B 4B 5B 6B 7B 8B 9B 10B 11B 12B 13B 14B 15B 16B 17B 18B 19B 20B

PHOTOVOLTAIC POWER SOURCE







solar^{edge}



BI-N Backup Interface

Voltage Min-Nom-Max:	211Vac 240Vac 264Vac
AC Single Phase Nominal Frequency:	60Hz
Max grid current:	200Aac
Max service panel output current:	200Aac
Max Continuous Inverter Input current (per inverter):	48Aac
Max Continuous Generator Input current:	94Aac
Ambient Temperature:	- 40..50°C
Enclosure:	IP44/NEMA 3R

For more details refer to the installation guide



Intertek
4004590

PN: BI-NUSGN-02



SN: SJ0223-06302CA3E-6D



Made in China

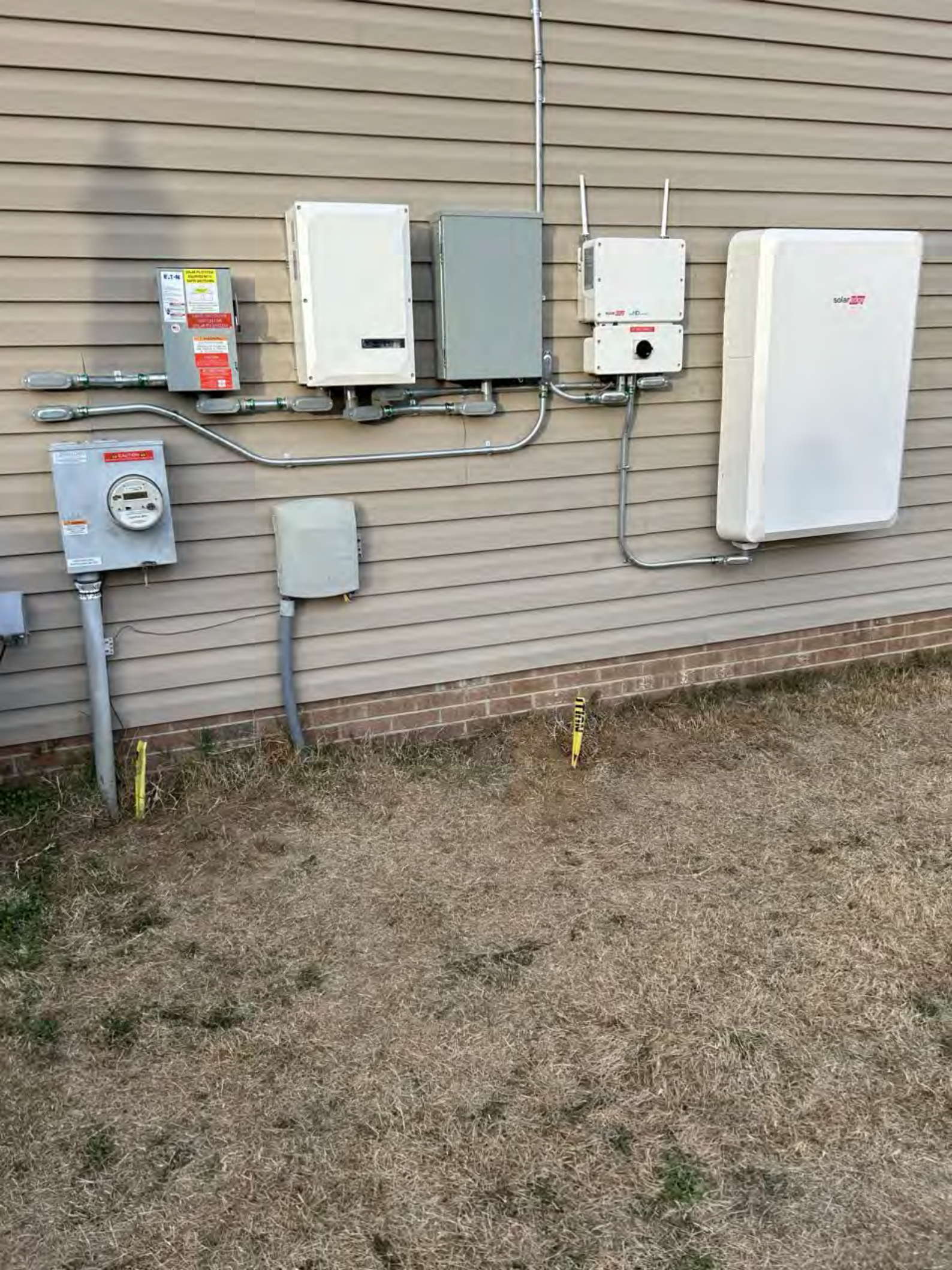












6.1-4
Please do not touch
equipment unless
you are qualified
to do so.
© 2011
Eaton

6.1-4
Please do not touch
equipment unless
you are qualified
to do so.
© 2011
Eaton

solar

CAUTION



EATON

General Duty Safety Switch
Interrupteur de sécurité à usage général
Interruptor de seguridad de servicio general

60 A, 240 V~, 60 Hz

Complete ratings inside
Valeurs nominales complètes à l'intérieur
Información completa de capacidades en el interior

Further instructions inside
Autres instructions à l'intérieur
Instrucciones adicionales en el interior

Made in U.S.A. / Fabriqué aux É.-U. / Hecho en E.U.A.

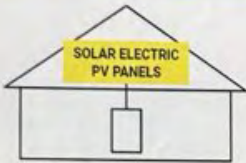
⚠ DANGER
HAZARDOUS VOLTAGE WILL CAUSE
SERIOUS INJURY OR DEATH.
• Never operate switch with cover open.
• Turn OFF power ahead of switch before doing any work.
• Lock and Tag before work.
• Clear cover before locking.

**⚠ TENDRE BANDELERE PEUT CAUSER
DES BLESSURES GRAVES OU LA MORT.**
• Ne jamais manipuler l'interrupteur lorsque le couvercle est ouvert.
• Débrancher l'alimentation du circuit de l'interrupteur avant
de travailler. Étiqueter les câbles.
• Verrouiller et étiqueter avant de travailler.
• Débrancher le couvercle avant de travailler.

⚠ PELIGRO
VOLTAJE PELIGROSO PUEDE CAUSAR
HERIDAS REVERAS O LA MUERTE.
• Nunca opere el interruptor con la cubierta abierta.
• Desconecte la alimentación del interruptor antes de
trabajar. Etiquete los cables.
• Bloquee y etiquete antes de trabajar.
• Quite la cubierta antes de trabajar.



**SOLAR PV SYSTEM
EQUIPPED WITH
RAPID SHUTDOWN**



TURN RAPID SHUTDOWN SWITCH TO
THE "OFF" POSITION TO SHUT DOWN
PV SYSTEM AND REDUCE
SHOCK HAZARD IN THE ARRAY

**RAPID SHUTDOWN
SWITCH FOR
SOLAR PV SYSTEM**

⚠ WARNING
ELECTRIC SHOCK HAZARD
TERMINALS ON THE LINE AND
LOAD SIDES MAY BE ENERGIZED
IN THE OPEN POSITION

CAUTION:
MULTIPLE SOURCES OF POWER
THE SERVICE DISCONNECT IS LOCATED
INSIDE OPPOSITE THE UTILITY METER

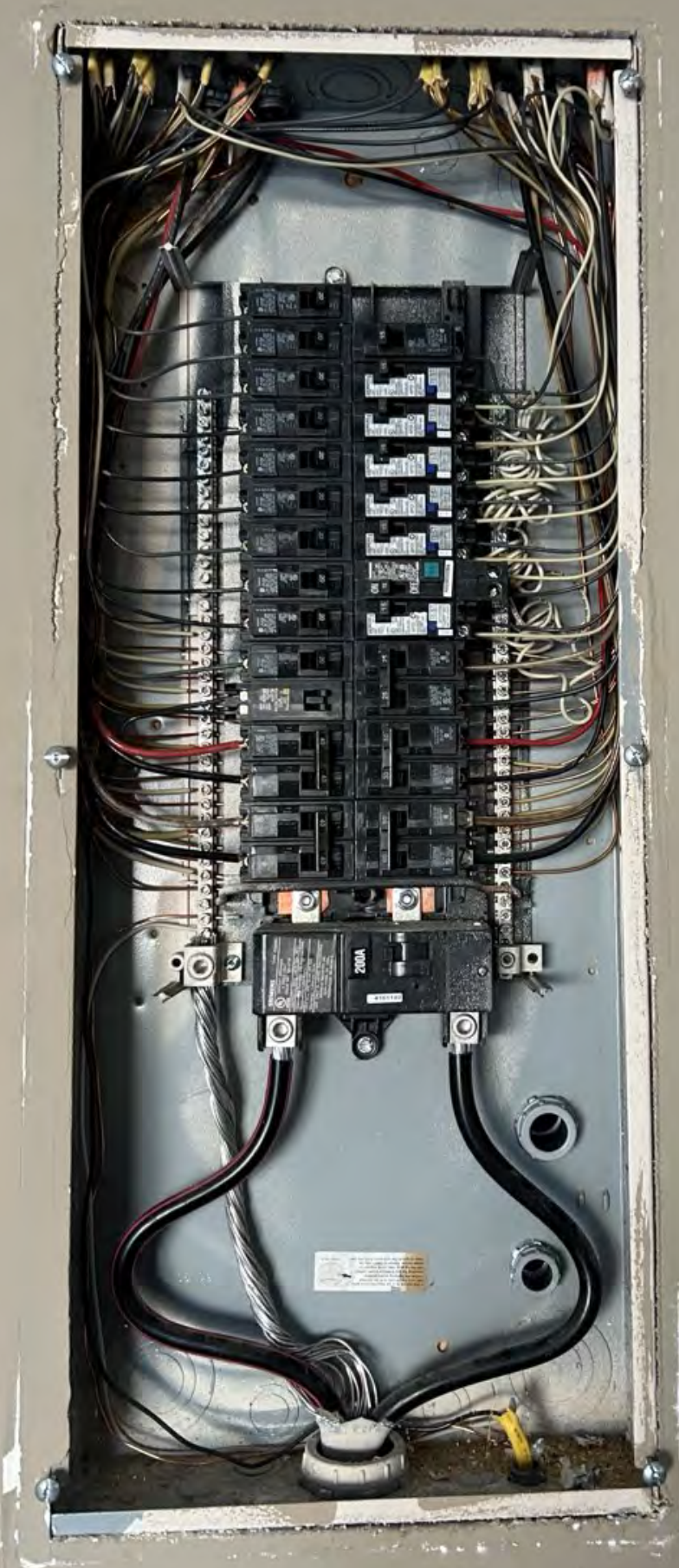
**AC DISCONNECT
PHOTOVOLTAIC SYSTEM
POWER SOURCE**

RATED AC OUTPUT CURRENT **25** AMPS
NOMINAL OPERATING AC VOLTAGE **240** VOLTS

ON

OFF













AUTO-CALIBRATED
DIGITAL
IP65 DUST & WATER PROTECTED
PRESS TO TEST

34.3

AUTO-CALIBRATED

MODE

INSPECT

HOLD

Em



ELECTRICAL RESIDENTIAL

910-893-7525

www.harnett.org

PERMIT NUMBER

ERES2401-0077

JOB ADDRESS: 146 TRENTON PL	PERMIT SUBTYPE: RESIDENTIAL SOLAR PANELS	PARCEL NO: 9594-39-2568.000
DESCRIPTION: 14 roof mounted solar panels	DATE ISSUED: 2/6/2024	DATE EXPIRED:
PLAN NAME:	ZONING DISTRICT: RA-20R - 0.22 acres (100.0%)	

APPLICANT: Top Tier Solar Solutions, LLC 1530 Center Park Dr. Charlotte, NC 28217	PHONE: (855)997-1213 EMAIL: nc@toptiersolarsolutions.com
CONTRACTOR: Top Tier Solar Solutions, LLC 1530 Center Park Dr. Charlotte, NC 28217	PHONE: (855)997-1213 EMAIL: nc@toptiersolarsolutions.com
OWNER: GEER AARON GABRIEL 146 TRENTON PL CAMERON, NC 28326 CAMERON, NC 28326-6267	PHONE: EMAIL:

REQUIRED INSPECTIONS

INSPECTION TYPE	APPROVAL	DATE	COMMENTS
FINAL**			
ROUGH IN			

CAUTION ⚠
SOLAR ELECTRIC SYSTEM CONNECTED

**RAPID SHUTDOWN
SWITCH FOR
SOLAR PV SYSTEM**

⚠ WARNING
POWER SOURCE
OUTPUT CONNECTION
DO NOT RELOCATE THIS
OVERCURRENT DEVICE

⚠ WARNING
DUAL POWER SUPPLY
SOURCES: UTILITY GRID
AND PV SOLAR
ELECTRIC SYSTEM



⚠ CAUTION:
MULTIPLE SOURCES OF POWER
THE PV DISCONNECT IS LOCATED
BESIDE THE SERVICE METER

SIEMENS

Indoor Load Center

Catalog Number	Series	Enclosure
G3040B1200	-	Type 1
G3040B1200CU	-	
G3040L1200	-	
G3040L1200CU	-	

RATINGS: 200A MAXIMUM - SEE MAIN BREAKER RATING IF USED.
BACK-FED BREAKER REQUIRES HOLD-DOWN KIT ECOMBR2.
120/240 V~, 60 HZ, 1Ø 3W ; 208Y/120 V~, 60 HZ, 1Ø 3W

FOR INSTALLATION BY A QUALIFIED PERSON IN ACCORDANCE WITH ALL LOCAL ELECTRICAL CODES AND/OR THE NATIONAL ELECTRICAL CODE ®.

SUITABLE FOR USE AS SERVICE EQUIPMENT WHEN MAIN BREAKER IS INSTALLED.

WHEN USED AS SERVICE EQUIPMENT, APPLY "SERVICE DISCONNECT" LABEL TO FRONT NEXT TO MAIN BREAKER HANDLE..

WHEN USED AS SERVICE EQUIPMENT, UNUSED NEUTRAL BAR TERMINALS MAY BE USED TO TERMINATE EQUIPMENT GROUNDING WIRES IN THE COMBINATIONS INDICATED FOR EQUIPMENT GROUND BAR TERMINALS.

WHEN THE NEUTRAL TIE STRAP IS REMOVED, THE LEFT NEUTRAL BAR WILL BECOME THE EQPT. GROUND. INSTALL LUG KIT ECLKB1 ON MAIN LUG DEVICES. ON MAIN BREAKER DEVICES, MOVE GREEN BONDING SCREW TO LEFT BAR.

SUM OF QT BREAKER RATING IS NOT TO EXCEED 110 AMPS PER BRANCH CIRCUIT BUS STAB.

TO RESET BREAKERS WITH TRIPPED HANDLE POSITION BETWEEN "ON" AND "OFF". MOVE HANDLE TO "OFF" THEN TO "ON".

REMOVE TWISTOUTS FROM TRIM ONLY WHERE BREAKERS WILL BE INSTALLED. ALL OPENINGS MUST BE FILLED WITH BREAKERS OR FILLER PLATES. USE TWO QF3 FILLER PLATES TO FILL 150-225A MAIN BREAKER OPENING

Siemens Industry, Inc. Norcross, Georgia U.S.A. J2 4094809 Rev.C

IMPORTANT: DO NOT ALLOW PETROLEUM BASED (HYDROCARBON) SPRAYS, CHEMICALS, SOLVENTS OR ANY PAINT TO CONTACT INTERIOR COMPONENTS. PETROLEUM BASED CHEMICALS CAN CAUSE DEGRADATION OF ELECTRICAL INSULATING MATERIALS.

⚠ DANGER

Hazardous Voltage.
Will cause death, serious injury
or substantial property damage.

Turn off power supplying this
equipment before working inside.



⚠ PELIGRO

Voltaje peligroso. Causará la
muerte, lesiones graves o daño
substantial a la propiedad.

Desconecte el suministro de energía a este
equipo antes de trabajar en su interior.

SHORT CIRCUIT CURRENT RATING

THIS PANELBOARD HAS A MAXIMUM SHORT CIRCUIT CURRENT RATING OF 100,000 AMPS RMS SYMMETRICAL, 120/240V~. THE ACTUAL RATING IS DEPENDENT ON THE BRANCH BREAKERS INSTALLED IN THIS PANELBOARD AND THE MAIN/FEEDER BREAKER, IF ANY, INSTALLED AHEAD OF THIS PANELBOARD. THE CORRECT MAIN BREAKER/FEEDER/MAIN BREAKER/PANELBOARD MAIN BREAKER/BRANCH BREAKER SERIES COMBINATIONS TO BE USED ARE LISTED IN THE TABULATION BELOW. ANY CIRCUIT BREAKER INSTALLED, REPLACED, OR ADDED IN THIS PANELBOARD MUST BE MANUFACTURED BY SIEMENS AND MUST BE OF THE CORRECT TYPE AS INDICATED IN THE TABULATION BELOW. USE OF OTHER CIRCUIT BREAKERS IN THIS EQUIPMENT WILL VOID THE WARRANTY.

MAIN BREAKER	FEEDER/MAIN BREAKER	PANELBOARD MAIN [‡]	BRANCH BREAKER	THEN THE MAX. SHORT CIRCUIT CURRENT RATING IN RMS SYMMETRICAL AMPS, 120/240 V~ IS
WHEN THE MAIN PROTECTING THE SYSTEM IS A	AND THE BREAKER PROTECTING THIS PANELBOARD IS A SIEMENS TYPE	AND THE INSTALLED MAIN BREAKER IN THIS PANELBOARD IS A SIEMENS TYPE	AND THE BRANCH BREAKERS INSTALLED ARE SIEMENS TYPE	
NONE USED	QN, QNR	NONE USED, EQ8693, EQ8695 OR QP	QP, QT, QPH, HQP, QPF, QPHF, QFP, QE, QEH, QAF, QAFH, QNR, QNRH, HQNR	10,000
NONE USED OR SIEMENS BREAKER TYPES FD6(-A), FXD6(-A), HFD6, HFXD6, JXD2(-A), JD6(-A), JXD6(-A), HJD6(-A), HJXD6(-A), LD6(-A), LXD6(-A), HLD6(-A), HLXD6(-A), MD6, MXD6, HMD6, HMXD6, ND6, NXD6, HND6, HNXD6, PD6, PXD6, HPD6, HPXD6, RD6, RXD6, HRD6, HRXD6, OR CLASS J, T, R OR L FUSES	QPP, QJ2, QPM	EQ8693 OR EQ8695	QP, QT, QPH, HQP, QPF, QPHF, QE, QEH, QAF, QAFH, QNR, QNRH, HQNR	22,000
NONE USED	QNH, QNRH	NONE USED, EQ8693, EQ8695 OR QPH	QP, QPH, HQP, QNR, QNRH, HQNR	42,000
NONE USED OR SIEMENS BREAKER TYPES FD6(-A), FXD6(-A), HFD6, HFXD6, JXD2(-A), JD6(-A), JXD6(-A), HJD6(-A), HJXD6(-A), LD6(-A), LXD6(-A), HLD6(-A), HLXD6(-A), MD6, MXD6, HMD6, HMXD6, ND6, NXD6, HND6, HNXD6, PD6, PXD6, HPD6, HPXD6, RD6, RXD6, HRD6, HRXD6, OR CLASS J, T, R OR L FUSES	QPPH, QJH2	NONE USED	QPH, QPHF, QEH, QAFH, QNRH	65,000
NONE USED	QJ2H	NONE USED	QP, QPH, HQP, QNR, QNRH, HQNR	100,000
SIEMENS BREAKER TYPES FD6(-A), FXD6(-A), HFD6, HFXD6, JXD2(-A), JD6(-A), JXD6(-A), HJD6(-A), HJXD6(-A), LD6(-A), LXD6(-A), HLD6(-A), HLXD6(-A), MD6, MXD6, HMD6, HMXD6, ND6, NXD6, HND6, HNXD6, PD6, PXD6, HPD6, HPXD6, RD6, RXD6, HRD6, HRXD6, OR CLASS J, T, R OR L FUSES	QN, QNH, HQN, QNR, QNRH, HQNR, HQPP	NONE USED, EQ8693, EQ8695 OR HQP	QP, QT, QPH, HQP, QPF, QPHF, QE, QEH, QAF, QAFH, QNR, QNRH, HQNR	
NONE USED	HQPP, HQN, HQNR	NONE USED	HQP, HQNR	
NONE USED OR SIEMENS BREAKER TYPES HFD6, HFXD6, HJD6(-A), HJXD6(-A), HLD6(-A), HLXD6(-A), HMD6, HMXD6, HND6, HNXD6, HPD6, HPXD6, HRD6, HRXD6, OR CLASS J, T, R OR L FUSES	HQPPH	NONE USED OR EQ8693 OR EQ8695	QP, QT, QPH, HQP, QPF, QPHF, QE, QEH, QAF, QAFH	
	HQJ2H	NONE USED		

[‡] THIS PANELBOARD IS A MAIN LUG DEVICE THAT MAY BE CONVERTED TO MAIN BREAKER WITH THE ADDITION OF FIELD INSTALLED MAIN BREAKER KIT OR A MAIN BREAKER DEVICE THAT MAY BE CONVERTED TO MAIN LUG WITH THE ADDITION OF MAIN LUGS. SEE ACCESSORY TABLE FOR CATALOG NUMBERS OF APPROPRIATE KITS.

THIS LOAD CENTER IS INVERTIBLE FOR BOTTOM FEED APPLICATIONS.

USE COPPER OR ALUMINUM 60°/75°C WIRE

SEE BREAKER MARKINGS FOR WIRE SIZE AND TORQUE REQUIREMENTS.

MAIN LUG / MAIN BREAKER KITS	
USE APPROPRIATE KIT FROM CHART BELOW TO CONVERT PANEL.	
DESCRIPTION	CAT. NO.
150 AMP MAIN BREAKER	MBK150A
200 AMP MAIN BREAKER	MBK200A
150-225 AMP MAIN LUG	ECMLK225

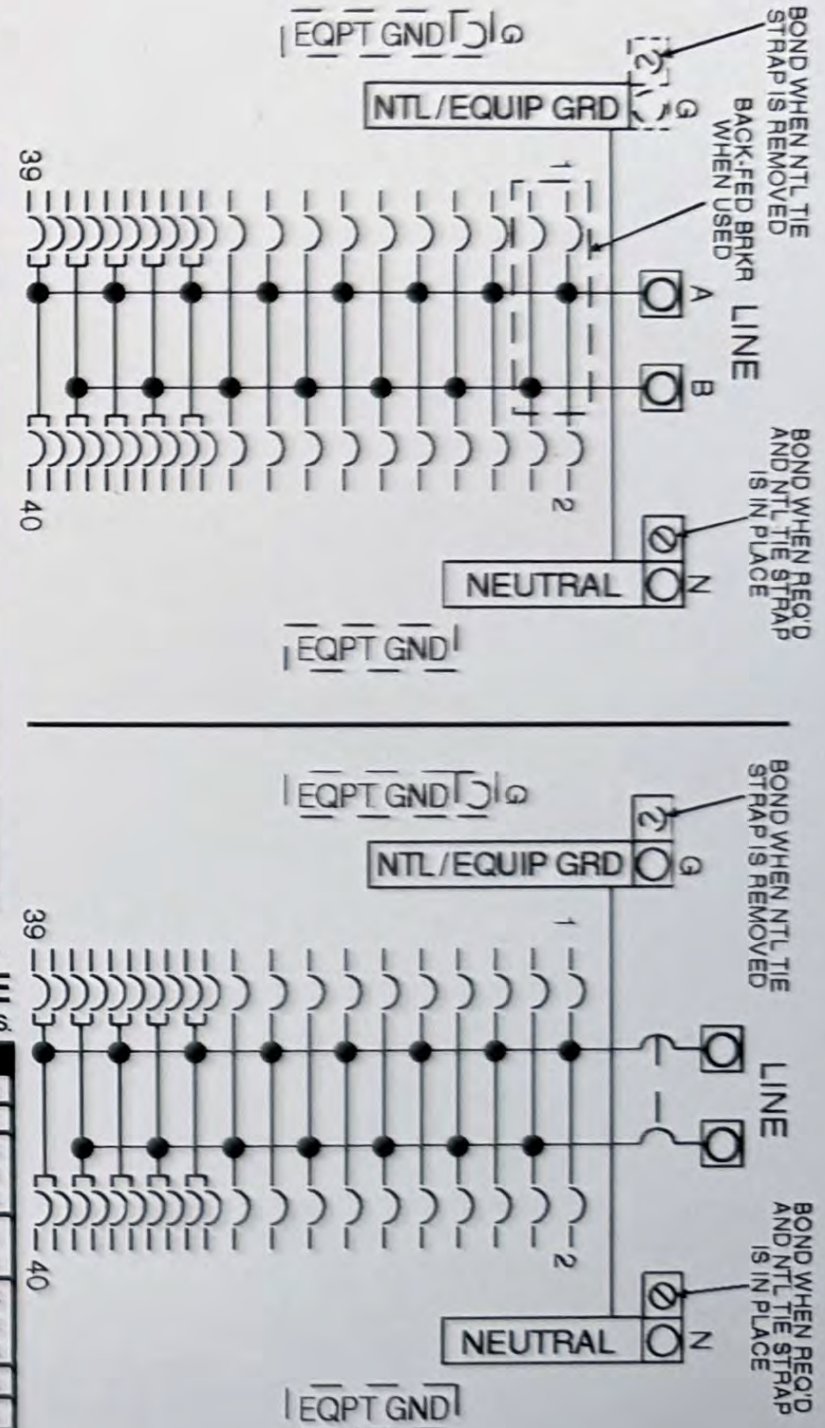
ACCESSORIES	
DESCRIPTION	CAT. NO.
DOOR LOCK	ECQFL2
FILLER PLATE, 1"	QF3
BREAKER HOLD-DOWN	ECOMBR2
BONDABLE GROUND LUG	ECLKB1
SUBFEED LUG KIT	ECLK2125 ECLK2150 ECLK2225
STANDBY PWR INTERLOCK KITS: ECSBPK01, ECSBPK02, ECSBPK03, ECSBPK05, ECSBPK06, ECSBPK07	

TERMINALS	WIRE	TORQUE
A, B, N	300 kcmil - 4 AWG	275 LB-INS
G	2/0-4 AWG	110 LB-INS
NEUTRAL/GROUND BARS (USE TYPE GB GROUND BAR KIT ACCESSORY)	10-14 CU/10-12 AL 8 AWG 6-4 AWG	20 LB-INS 25 LB-INS 35 LB-INS
GROUND CONDUCTORS ONLY	(2)or(3) 14 AWG (2) 12-10 AWG	20 LB-INS 20 LB-INS
ECLK1-2 NEUTRAL LUG KIT	2/0-2 AWG	45 LB-INS
ECLK2 NEUTRAL LUG KIT	2/0-4 AWG	135 LB-INS
ECLK3 NEUTRAL LUG KIT	300 kcmil - 1 AWG	340 LB-INS
MAIN LUG/MAIN BRKR TO BUS CONNECTION (1/4-2Ø NUT)		45 LB-INS
BONDING SCREW		45 LB-INS

Assembled in Mexico

© 2010 Copyright Siemens Industry, Inc.

® The National Electrical Code is a registered trademark of the National Fire Protection Association.



SOLAR PV BREAKER
 BREAKER IS BACKFED
 DO NOT RELOCATE



P.V
 SOLAR
~~50 PV~~
~~Damage~~
 Bed Rooms
 2+3
 Upstairs
 Hall & Bath lights
 Bonus
 Room
 Smoke
 Detectors
 +

CAUTION
SOLAR ELECTRIC SYSTEM CONNECTED

SOLAR PV BREAKER
BREAKER IS BACKFED
DO NOT RELOCATE

Master			SOLAR
Hot Bar			50 PV
Kraus			Bedroom
Fireplace			2+3
Fish			Upstairs
Master			W/L Bed/Lights
Disposal			Basement
Spare			Room
Handover			Small
J-Tub			Master
Spare			Breakroom
Spare			Great Room
Spare			Dunsmuir
6PS			Lights
Bath			WATER
Spare			HEATER
Line			
Garage			DRYER
AVC			HEAT

SIEMENS

100 Amp, 120/240 Volt, Single Phase

CAUTION

WARNING

SAFETY

INSTALLATION

OPERATION

MAINTENANCE

REPAIR

TESTING

TRoubleshooting

Wiring Diagrams

Panel Schedule

Panel	Label	Rating	Notes
1	Master	20A	
2	Hot Bar	20A	
3	Kraus	20A	
4	Fireplace	20A	
5	Fish	20A	
6	Master	20A	
7	Disposal	20A	
8	Spare	20A	
9	Handover	20A	
10	J-Tub	20A	
11	Spare	20A	
12	Spare	20A	
13	6PS	20A	
14	Bath	20A	
15	Spare	20A	
16	Line	20A	
17	Garage	20A	
18	AVC	20A	

200A

combination

200A

100 Amp, 120/240 Volt, Single Phase

WARNING

CAUTION

SAFETY

INSTALLATION

OPERATION

MAINTENANCE

REPAIR

TESTING

TRoubleshooting

Wiring Diagrams

Panel Schedule

Panel	Label	Rating	Notes
1	Master	20A	
2	Hot Bar	20A	
3	Kraus	20A	
4	Fireplace	20A	
5	Fish	20A	
6	Master	20A	
7	Disposal	20A	
8	Spare	20A	
9	Handover	20A	
10	J-Tub	20A	
11	Spare	20A	
12	Spare	20A	
13	6PS	20A	
14	Bath	20A	
15	Spare	20A	
16	Line	20A	
17	Garage	20A	
18	AVC	20A	



solar_{edge}

AC COMM FAULT

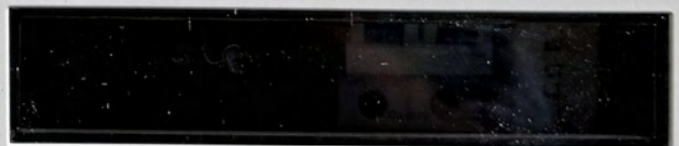


INVERTERS

3

2

1



EATON®

General Duty Safety Switch
Interrupteur de sécurité à usage général
Interruptor de seguridad de servicio general

60 A, 240 V~, 60 Hz

Complete ratings inside
Valeurs nominales complètes à l'intérieur
Información completa de capacidades en el interior

Further instructions inside
Autres instructions à l'intérieur
Instrucciones adicionales en el interior

Made in U.S.A. / Fabriqué aux É.-U. / Hecho en E.U.A.

⚠ DANGER
HAZARDOUS VOLTAGE. WILL CAUSE SEVERE INJURY OR DEATH.

- Never operate switch with cover open.
- Turn OFF power ahead of switch before doing any work inside. Replace all parts. Close cover before turning power ON.

TENSION DANGEREUSE. PEUT CAUSER DES BLESSURES GRAVES OU LA MORT.

- Ne jamais manœuvrer l'interrupteur lorsque le couvercle est ouvert.
- Couper l'alimentation en amont de l'interrupteur avant toute intervention. Remplacer les pièces. Fermer le couvercle avant de remettre sous tension.

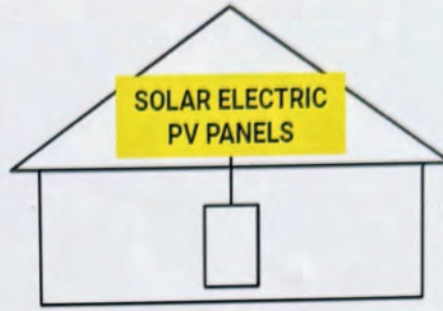
⚠ PELIGRO
VOLTAJE PELIGROSO. PUEDE CAUSAR HERIDAS SEVERAS O LA MUERTE.

- Nunca opere el interruptor con la cubierta abierta.
- Desconectar la alimentación del interruptor antes de trabajar dentro del mismo. Reemplazar todas las partes. Cerrar la cubierta antes de energizar el interruptor.

30-43080



SOLAR PV SYSTEM EQUIPPED WITH RAPID SHUTDOWN



TURN RAPID SHUTDOWN SWITCH TO THE "OFF" POSITION TO SHUT DOWN PV SYSTEM AND REDUCE SHOCK HAZARD IN THE ARRAY

RAPID SHUTDOWN
SWITCH FOR
SOLAR PV SYSTEM

⚠ WARNING
ELECTRIC SHOCK HAZARD

TERMINALS ON THE LINE AND
LOAD SIDES MAY BE ENERGIZED
IN THE OPEN POSITION

CAUTION:
MULTIPLE SOURCES OF POWER
THE SERVICE DISCONNECT IS LOCATED
INSIDE OPPOSITE THE UTILITY METER

**AC DISCONNECT
PHOTOVOLTAIC SYSTEM
POWER SOURCE**

RATED AC OUTPUT CURRENT	25	AMPS
NOMINAL OPERATING AC VOLTAGE	240	VOLTS

solaredge



BAT-10K1P

Nominal Energy	9.7 kWh
Rated capacity	94Ah
Output Voltage (Min-Nom-Max)	350-400-450 Vdc
Continuous Output Power	5.0 kWdc
Max Continuous Output current	14.3 Adc
Peak Output Power in Backup / duration	7.5 /10 kWdc / sec
Max short circuit current / duration	1k/10 Adc/msec
Enclosure	NEMA 3R / IP55
Operating Temperature Range	- 10°C to +50°C
Storage Temperature Range	- 30°C to +60°C
Battery Designation	ICP/46/174/134/[1P30S]E/-10+50/95

Li Ion rechargeable battery



P/N: BAT-10K1PS0B -02



SN: SZ3922-06307BC48-6E



Intertek

4004590

DCI BREAKER

NOARK NOARK NOARK

AX3123 SHT31UC Ex9BP

00542 12-24V ~ 25A 600V ~ 83777

li 12In C Uimp=4kV Cat A, Deg. 3

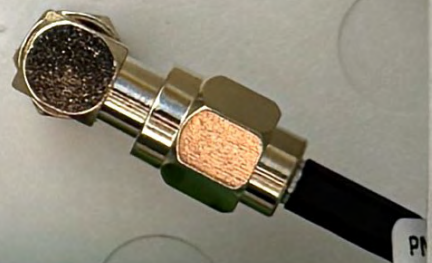
1 3 5 7

P O

POWER
COMM
FAULT



ANT





LOADCENTER STYLE: CH
NEMA ENCLOSURE TYPE: 3R - RAINPROOF
ENCLOSED PANELBOARD RATING: 125 AMPS MAX. SEE MAIN BREAKER RATING.
 120/240 VAC 1 PHASE 3 WIRE, 208Y/120 VAC 3 WIRE, 50/60 HZ.
BUS RATING: 125 AMPS MAX.
 MAXIMUM SUM OF BREAKER RATINGS PER STAB: 200 A.

BREAKER INFORMATION
 MAIN BREAKERS (EATON - UL TYPE): CSR, CSH, BW, BWH OR BACKFED ETN02, CH, CH3 (REQUIRES HOLD-DOWN KIT PER BELOW).
 BRANCH BREAKERS (EATON - UL TYPE): ETN02, CH, CHT or CH3. THIS DEVICE ACCEPTS EATON "PLUG-ON NEUTRAL" BREAKERS, DO NOT BACK OUT NEUTRAL SCREWS OR INSTALL WIRE IN NEUTRAL BAR BENEATH IT. ADDITIONAL OR REPLACEMENT BREAKERS SHALL BE OF THE SAME MANUFACTURER AND TYPE AND SHALL HAVE AN INTERRUPTING RATING EQUAL TO OR GREATER THAN THE INTERRUPTING RATING OF ANY CIRCUIT BREAKER INSTALLED.
 AUTOMATIC TRIP IS INDICATED BY A HANDLE POSITION MIDWAY BETWEEN THE "ON" AND "OFF". MOVE HANDLE TO EXTREME "OFF", THEN TO "ON".

INSTALLATION NOTES
 THIS PANELBOARD MUST BE INSTALLED IN ACCORDANCE WITH ALL APPLICABLE LOCAL AND NATIONAL CODES; AND REGULATIONS.
 SUITABLE FOR USE AS SERVICE EQUIPMENT. INSTALL APPROPRIATE SERVICE BARRIER KIT BELOW.
 WHEN USED AS SERVICE EQUIPMENT, ANY UNUSED NEUTRAL TERMINALS MAY BE USED FOR EQUIPMENT GROUNDING. FOR EQUIPMENT GROUNDING, WIRE TERMINALS ARE SUITABLE FOR (1) #14-4 OR UP TO (3) #14-10 WIRES. MULTIPLE WIRES IN THE SAME HOLE MUST BE THE SAME SIZE AND MATERIAL.
 TERMINALS OTHER THAN BREAKER TERMINALS SUITABLE FOR 60/75°C AL-CU WIRE. BREAKER TERMINALS SUITABLE FOR AL-CU WIRE WHEN SO MARKED. REFER TO MARKINGS ON BREAKERS.

ACCESSORIES
 BACKFED MAIN BREAKER HOLD DOWN KIT : TYPE # CHPHD
 CSR TYPE MAIN BREAKER FILLER PLATE : TYPE # CSRFP
 FILLER PLATE TO CLOSE BRANCH OPENINGS : TYPE # CHFP
 MAIN LUG KIT FOR CONVERTIBLE PANELS : CAT # CHPSF125
 SUBFEED LUG KIT : CAT # CHPSF125
 # 6 - 2/0 NEUTRAL / GROUND LUGS : CAT # NL20
 # 6 - 300 NEUTRAL / GROUND LUGS : CAT # NL300
 # 6 - 2/0 NEUTRAL W/ BOND TAB LUGS : CAT # NLP20
 # 6 - 300 NEUTRAL W/ BOND TAB LUGS : CAT # NLP300
 BONDING SCREW KIT: CAT #BONDKITP
 MECHANICAL INTERLOCK KIT : CAT # CHPMIKCH
 LABEL KITS: TYPE # CHPMS
 RENOVATION TERMINAL BLOCK KIT: CAT # RN5TB

SERVICE BARRIER KIT (CSR): KIT # TICSR300
 SERVICE BARRIER KIT (CH): KIT # TIMCB3/0
 GROUND BARS: TYPE # GBKP
 or TYPE # GBK (for Special Installation Instructions see URL <http://leaton.com/instructions>)

FOR NEMA 3R ENCLOSURES ONLY:
 3/4" HUB: CAT # DS075H1
 1" HUB: CAT # DS100H1
 1-1/4" HUB: CAT # DS125H1
 1-1/2" HUB: CAT # DS150H1
 2" HUB: CAT # DS200H1
 2" HUB: CAT # DS200H2
 2-1/2" HUB: CAT # DS250H2
 3" HUB: CAT # DS300H2

SERIES SHORT CIRCUIT RATINGS

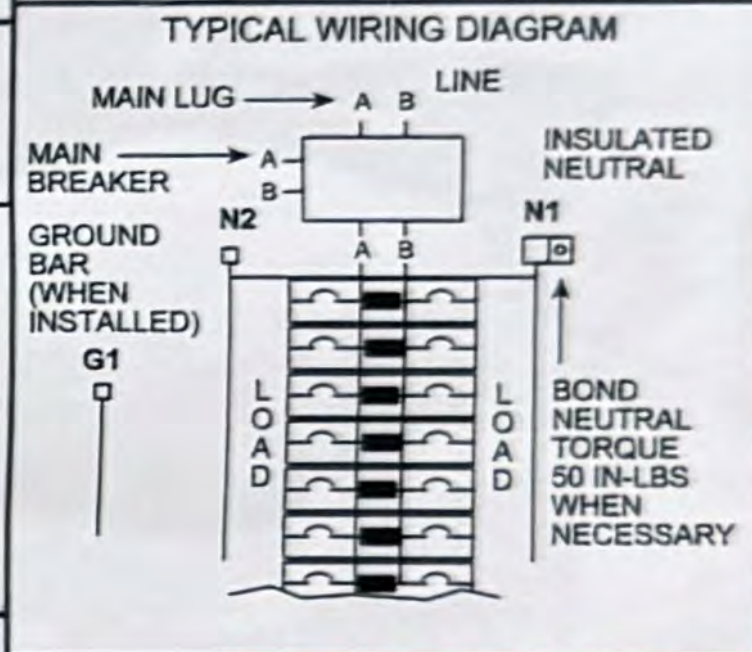
MAIN MODULE BREAKER FAMILY or CLASS FUSE	SYSTEM AIC RATING AT 240 VAC MAX.	METER MODULE TENANT BREAKER or LOADCENTER MAIN BREAKER FAMILY	M.M. TENANT BREAKER or LOADCENTR MAIN BREAKER SHORT CIRCUIT RATING	LOADCENTER BRANCH BREAKER FAMILY (1, 2 or 3 POLE)
NONE	10,000 100,000	NONE T fuse(400A Max)	N/A 100,000	SEE NOTE ** CH***,CHFCAF,CHFGF
WITHOUT MAIN DISCONNECT	10,000 22,000	BR,CC,BW,CCV,CH,CHF	10,000 22,000	SEE NOTE **,ETN02
CABLE TAP BOX FAMILY 1MTB or 3MTB	22,000 25,000 25,000	QBHW CSR***,BWH*** CCVH	22,000 25,000 25,000	CH,CHF,CHFAFGF,CHFGFT,CHFCAF,ETN02 CH,CHF,CHT,CHFCAF,CHFGF CH,CHF,CHFGFT,CHFCAF,ETN02
MAIN SWITCH MODULE FAMILY 1MFS or 3MFS 1BPS or 3BPS	42,000 65,000 25,000 100,000	BRHH,CVS BRX,CV,ED,GHB KD CVH	42,000 65,000 25,000 100,000	SEE NOTE **,ETN02 SEE NOTE **
MAIN BREAKER MODULE FAMILY 1MCB or 3MCB				SEE NOTE **
MAIN BRKR MOD FAMILY 1MCB or 3MCB RGH / PDG6xM 2000A NGS / PDG5xM 1200A MDL / PDG4xG 800A LGS / LD / PDG3xG 600A KD / PDG3xG 400A	65,000	BRHX	22,000	SEE NOTE **,ETN02
MAIN BRKR MOD FAMILY 1MCB, 3MCB RGH / PDG6xM 2000A NGH / PDG5xM 1200A HMDL / PDG4xM 800A LGH / HLD / PDG3xM 600A HKD / PDG3xM 400A	100,000	BRHX	22,000	SEE NOTE **,ETN02
MAIN SWITCH MOD FAMILY 1MFS or 3MFS WITH CLASS T FUSE 600A MAX	100,000	BRH	22,000	SEE NOTE **
MAIN SWITCH MOD FAMILY 1MFS or 3MFS WITH CLASS T FUSE 1200A MAX	100,000	BRHH	42,000	SEE NOTE **

*BREAKERS IN THIS COLUMN MAY NOT FIT IN THIS LOADCENTER, SEE BREAKER INFO TO LEFT.
 ** ALSO INCLUDES THESE BRANCH BREAKER FAMILIES: CH, CHF, CHT, CHFAFGF, CHFGFT, CHFCAF.
 ***CSR & BWH (200 AMPS MAX.)
 ****CH (70 AMPS MAX.)

TORQUE WIRE PRESSURE SCREW(S) AS FOLLOWS:

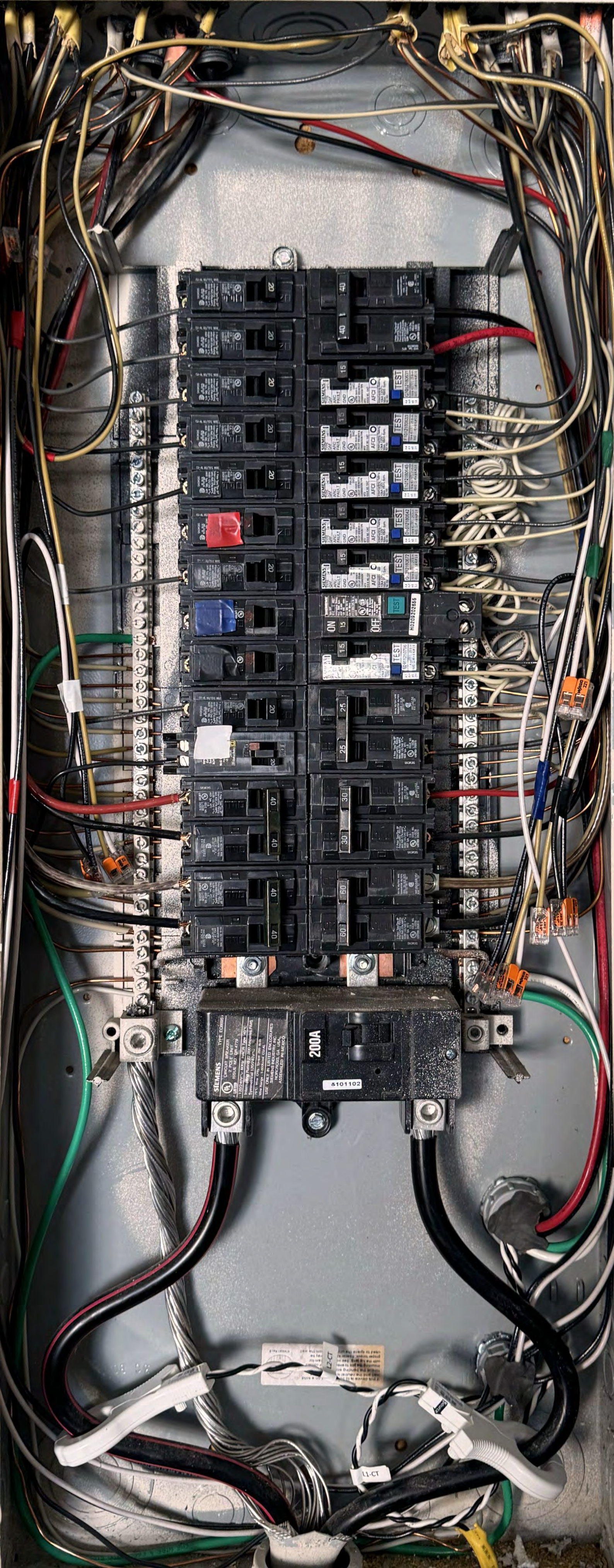
WIRE SIZE 60/75° C AL-CU AWG/ KCMIL	NEUTRAL & GROUND BAR LB-IN	GROUND LUG (G1) & NEUTRAL LUG (N2) LB-IN	PANEL LUGS (A & B) & MAIN NEUTRAL (N1) LB-IN
#14-10	20	-	-
#8	25	-	-
#6-4	35	60	60
#3-2/0	-	60	60
#6-300	-	-	-

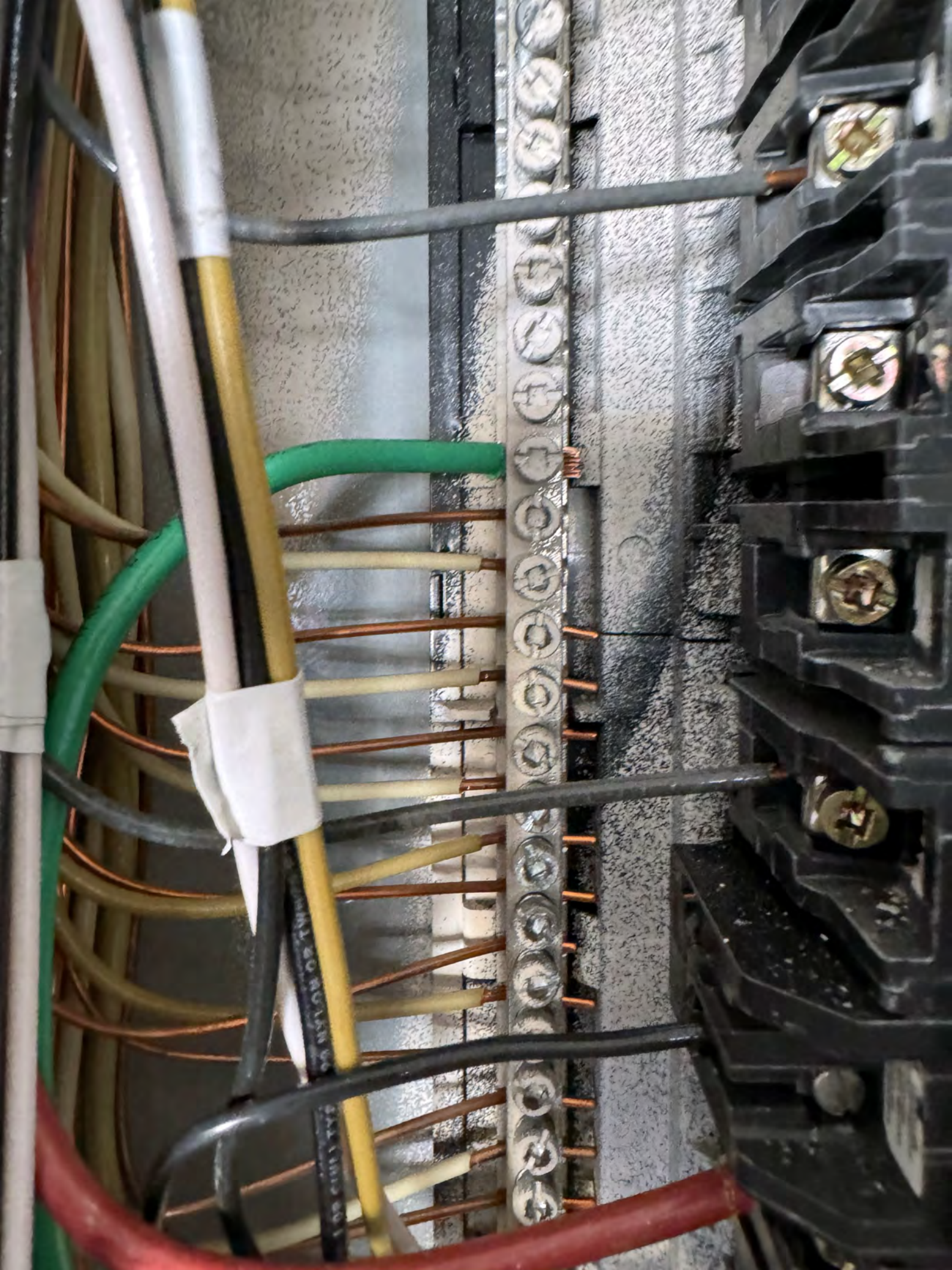
TORQUE CIRCUIT BREAKER LUGS TO VALUES SPECIFIED ON CIRCUIT BREAKERS.

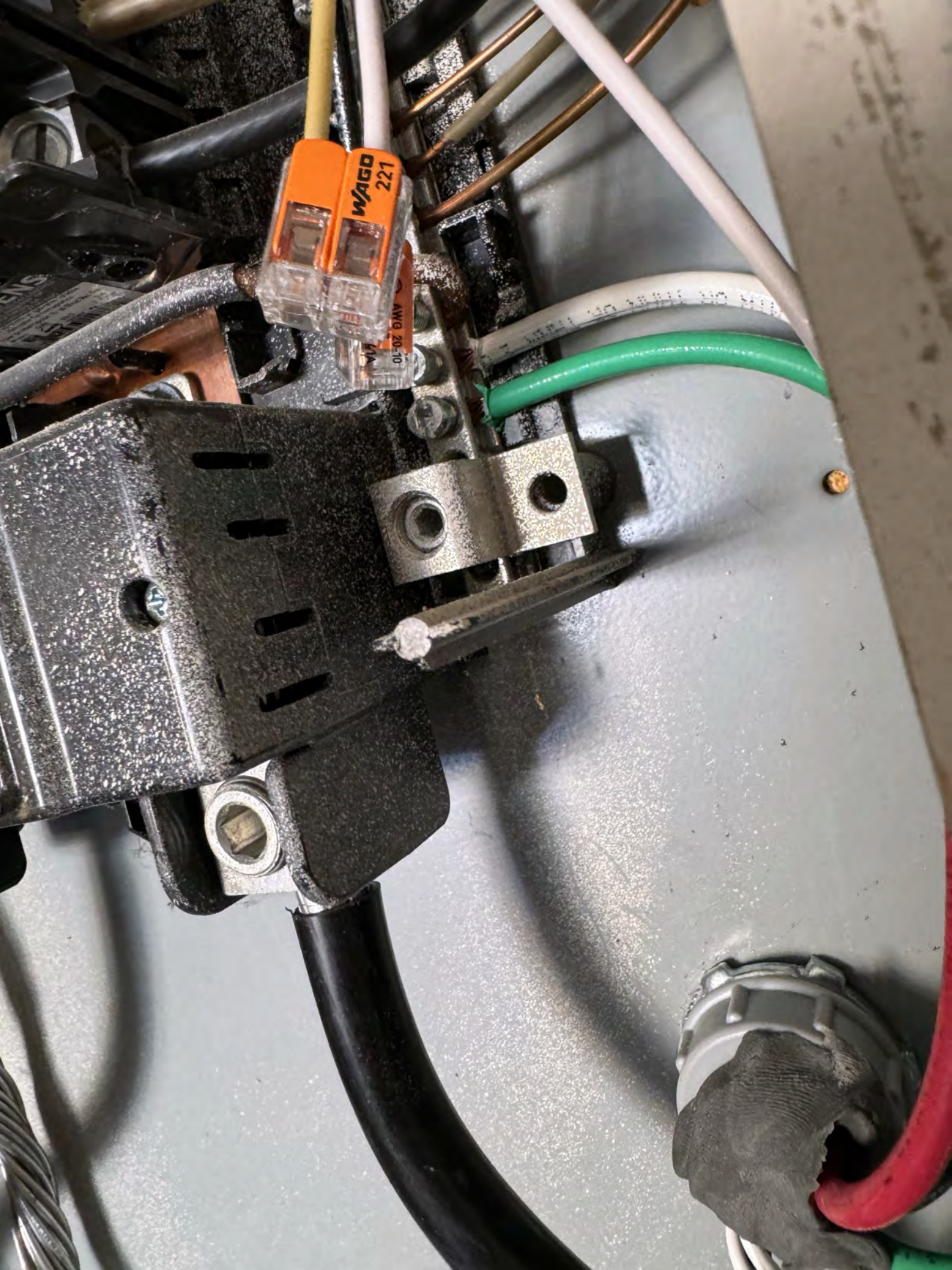


⚠ DANGER
 HAZARDOUS VOLTAGE. WILL CAUSE SEVERE INJURY OR DEATH.
 Turn OFF power supplying this equipment before working inside.
TENSION DANGEREUSE. PEUT CAUSER DES BLESSURES GRAVES OU LA MORT.
 Couper l'alimentation électrique de cet équipement avant d'y effectuer des travaux.

⚠ PELIGRO
 VOLTAJE PELIGROSO. CAUSA HERIDAS SEVERAS O MUERTE.
 INTERRUMPA el suministro de energía que alimenta este equipo antes de trabajar en el interior del mismo.







WAGO
221

AWG 20-10

SIEMENS TYPE EQ8695
CIRCUIT BREAKER
3 POLE UNIT
ISSUE NO. DR-4775
LISTED
120/240V, 60HZ HACR TYP 40°C
Interrupting Rating 80,000 Amperes RMS
Symmetrical 120/240V
75°C Wire CML, 14kVdc 350 kVdc
Wire Range - 1-3/8" to 1" CML
USE ONLY IN LISTED ENCLOSURES
SIEMENS INDUSTRY INC.
NORCROSS, GA USA
ASSEMBLED IN MEXICO

200A

8101102

12-CT
If the source is to be used for a long time, it is recommended that the source be replaced with a new one. The source should be replaced with a new one if the source is to be used for a long time. The source should be replaced with a new one if the source is to be used for a long time.

40

2 Poles 120/200V
Interrupting Rating
Pouvoir de Coupure
MAX RMS SYM AMPS
AMP SYM EFF MAX
10,000 20 2-0
CB 125
52533
UL LISTED E82615
SIEMENS
40°C Type

15

SIEMENS
TYPE QAF
ARC FAULT
GND

40°C

UL
HACR
SWD
LISTED E82615
CIRCUIT BREAKER &
COMBINATION TYPE
AFCI
ISSUE NO. 1047

AFCI

Interrupting Rating
10kA 120V
Max. RMS Sym.
60 Hz

TEST

G1012180631
Wire 60/75°C 25 lb-in
AUG CU #14-8/AL #12-8

A4
AR
46
3X

15

SIEMENS
TYPE QAF
ARC FAULT
GND

40°C

UL
HACR
SWD
LISTED E82615
CIRCUIT BREAKER &
COMBINATION TYPE
AFCI
ISSUE NO. 1047

AFCI

Interrupting Rating
10kA 120V
Max. RMS Sym.
60 Hz

TEST

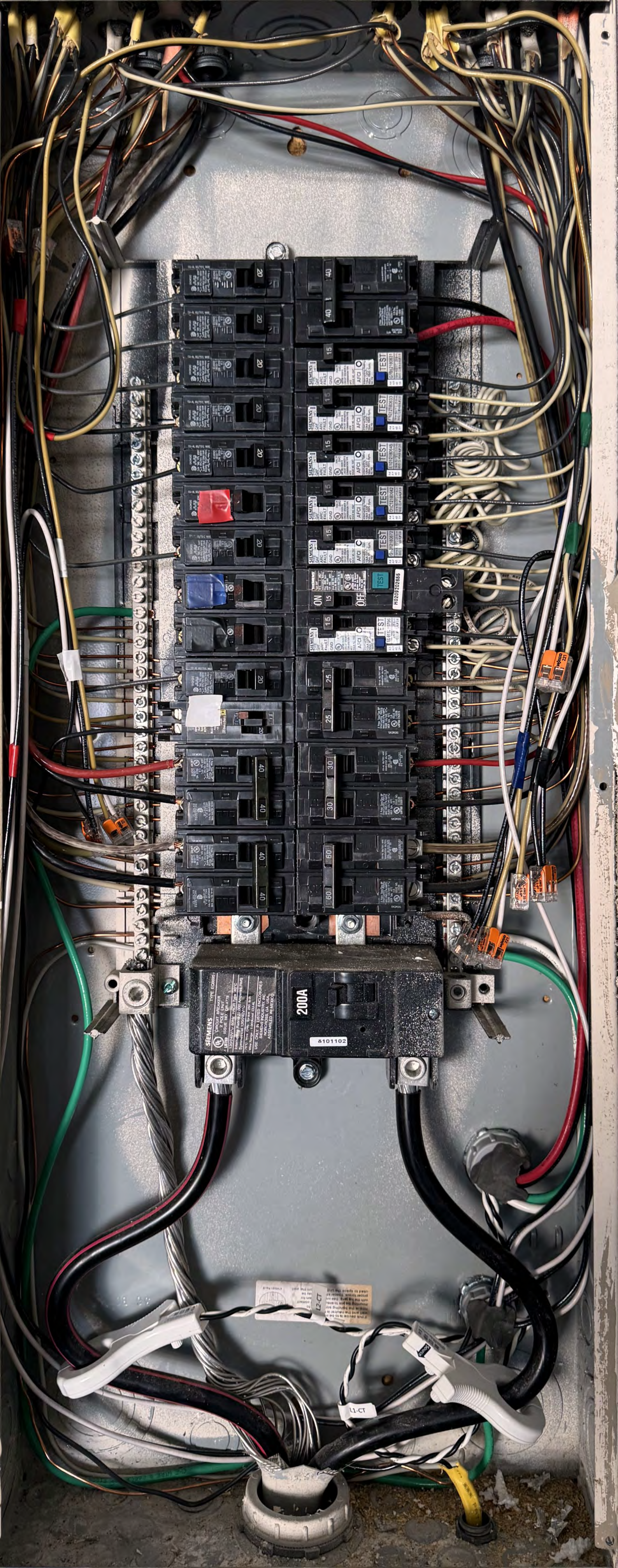
F1012180633
Wire 60/75°C 25 lb-in
AUG CU #14-8/AL #12-8

A4
AY
46
3Y

0

TEST

1012180645
60/75°C 25 lb-in
CU #14-8/AL #12-8





L2-CT
If this device is to be mounted on a rack, the rack must be properly secured to the rack. See the rack manual for more information. Do not use the rack for anything other than the intended purpose. Do not use the rack for anything other than the intended purpose. Do not use the rack for anything other than the intended purpose.

Source
10/100/1000 Mbps
RJ45
Patch Panel

D71

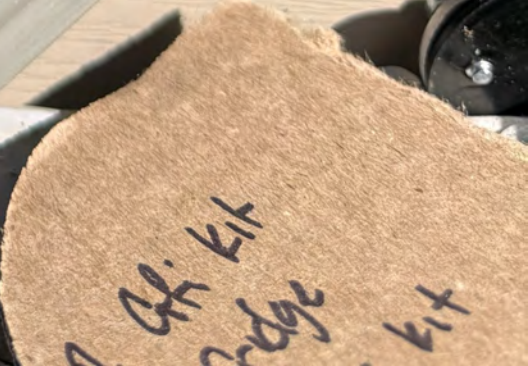


If this device is to be mounted on a wall and the neutral wire is to be connected to the wall, proper torque should be applied to the mounting bracket. See the diagram for proper contact. Torque may be applied to the mounting bracket from the wall. 47A0081 Rev. B

L2-CT

L1-CT

Source

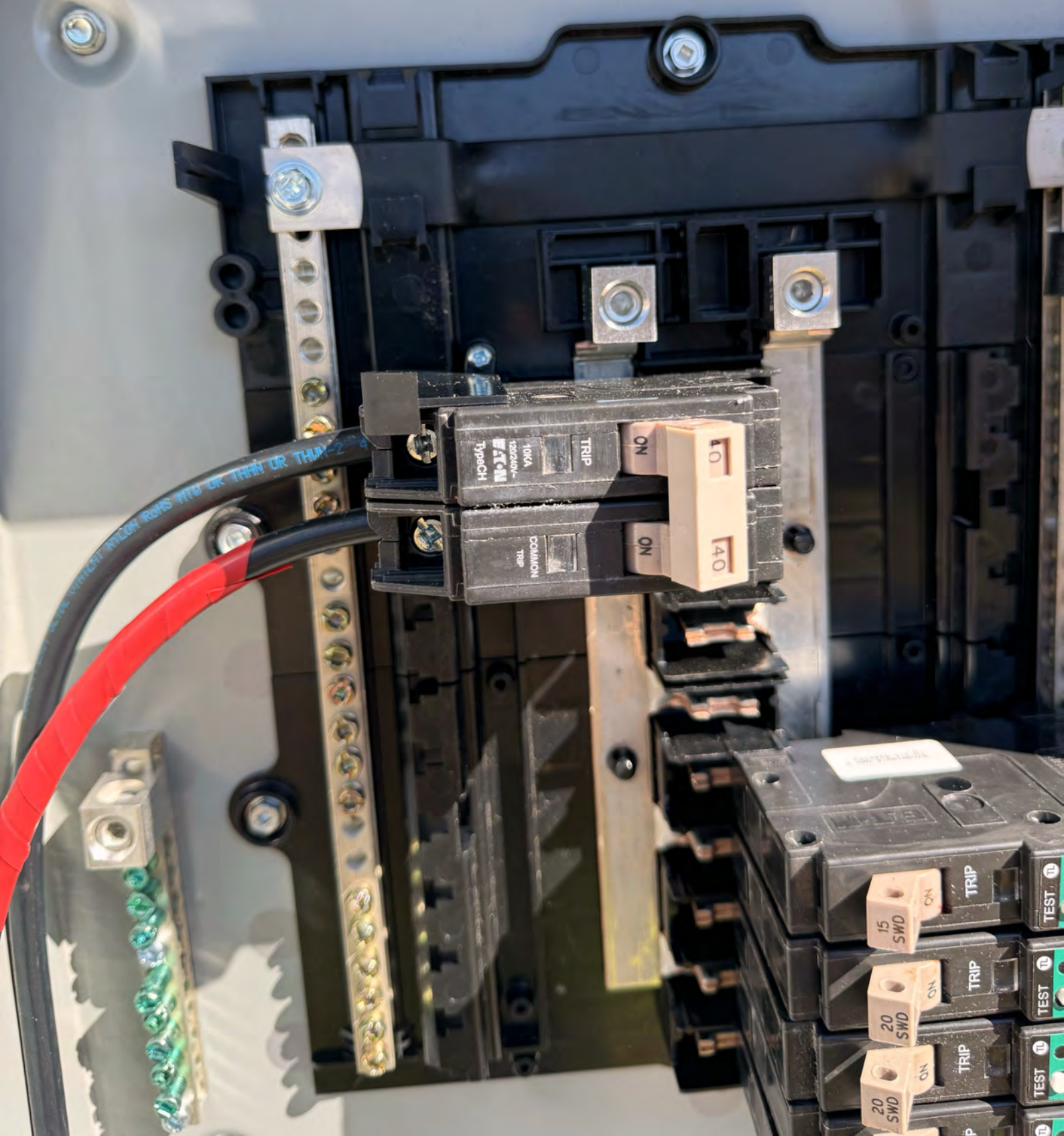


⚠ DANGER
HAZARDOUS VOLTAGE WILL CAUSE SEVERE INJURY OR DEATH.
INSTALLER/ELECTRICIAN HAS A DUTY TO READ AND FOLLOW THE INSTALLATION INSTRUCTIONS LOCATED AT THE FOLLOWING URL - <http://www.eaton.com/instructions>

⚠ PELIGRO
VOLTAJE PELIGROSO CAUSA HERIDAS SEVERAS O MUERTE.
L'INSTALLATEUR/L'ÉLECTRICIEN ET SUIVRE LES DIRECTIVES QUI LE ON TROUVE À L'URL SUIVANT - <http://www.eaton.com/instructions>

DANGER
INGERIRSE PUEDE CAUSAR LES BLESSURES GRAVES.
EL ELECTRICISTA TIENE EL DUTY DE LEER Y SEGUIR LAS INSTRUCCIONES DE LOCALIZACION DE LAS INSTRUCCIONES DE LOCALIZACION EN EL MANUAL DE INSTRUCCIONES EN EL URL "http://www.eaton.com/instructions".

UL LISTED
ENCLOSED PANELBOARD
ISSUE NO. 0143895
E-52977 30-9323



MOD 2

TER 1

UP
→

CT

L1

CT

L2

N/A

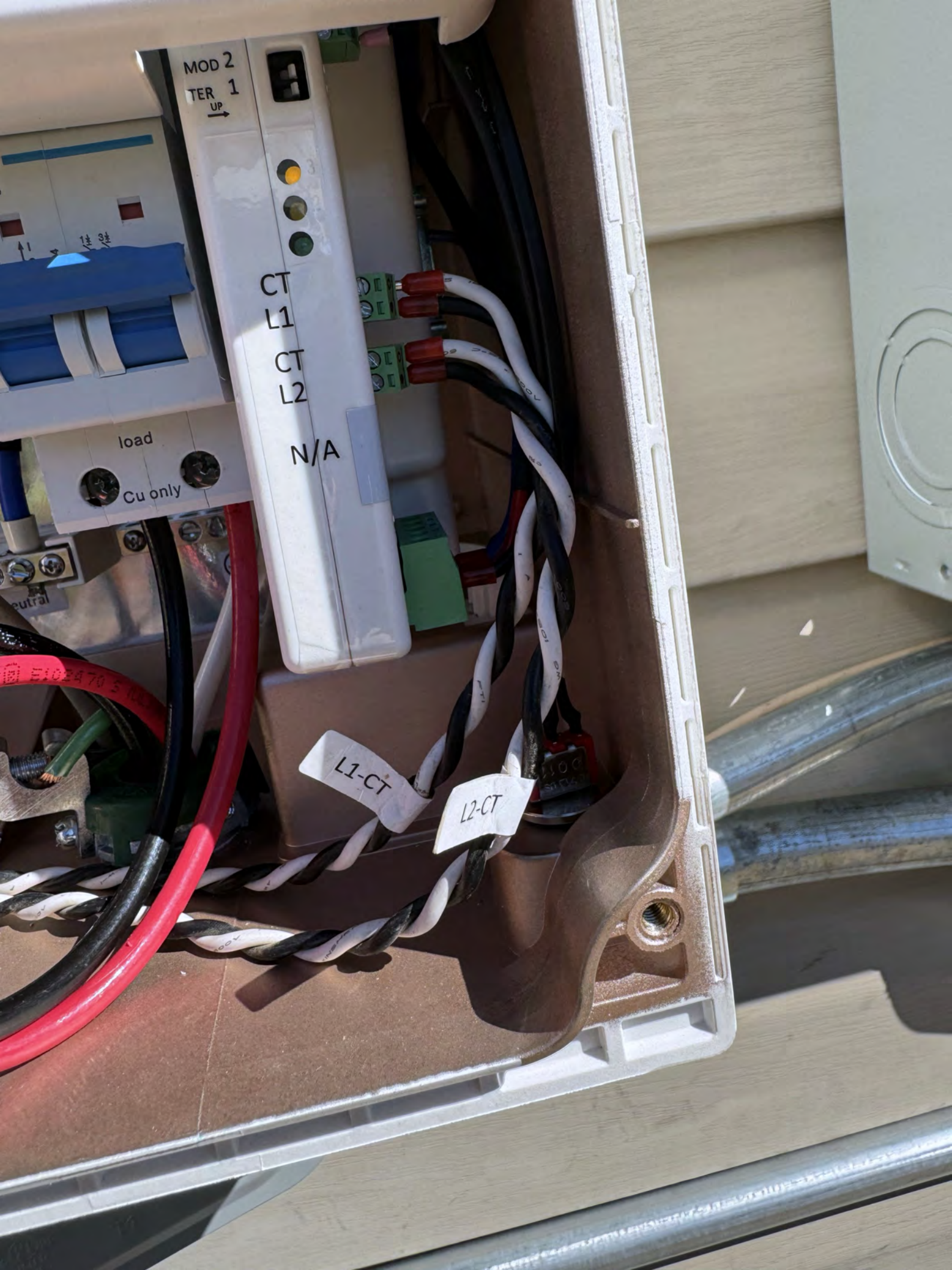
load

Cu only

neutral

L1-CT

L2-CT





GRID

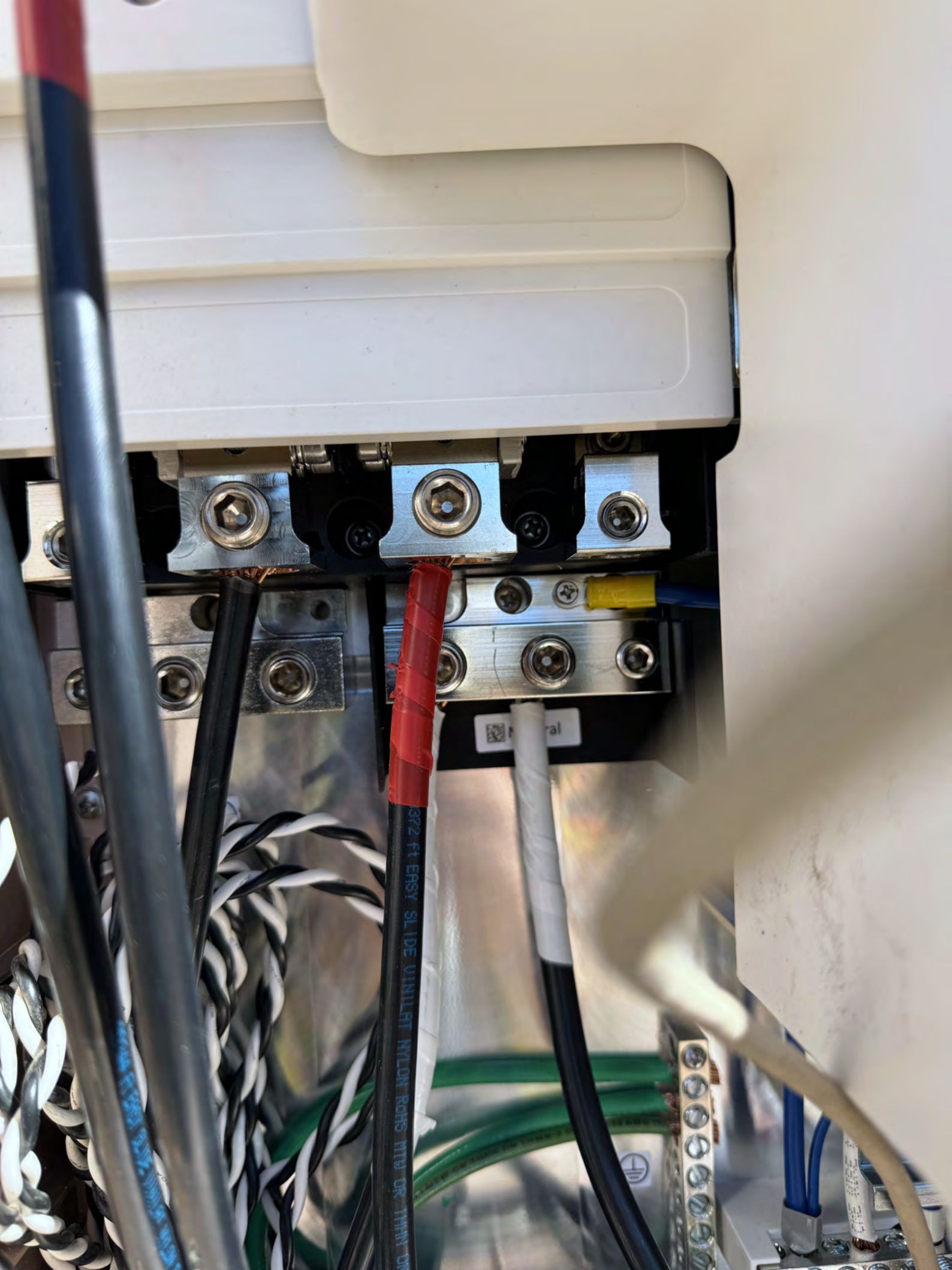
L1

2

MANUAL
CONTROL



600V 6R 11 MH-1 (UL) E973



372 FT EASY SLIDE VINYLPT NYLON ROHS MTW OR THHN OR

al



INV2

INV1

CHNT

NB1-63
C40

5000A
50/60Hz

load

Cu only

MOD 2

TER 1

UP

3

2

1

CT

L1

CT

L2

N/A

L1-CT

DRY 12V RSD RSD SS
CONTACTS INV INV A
A+ A- B+ B- + - - +



RS-485
TERMI



ON
OFF

AC COMM FAULT



MANUAL
CONTROL



OFF
ON

DRY 12V RSD RS485
CONTACTS INV INV
A-A-B-B- + - + - G A B



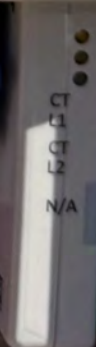
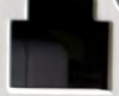
AC COMM FAULT



INV3

INV2

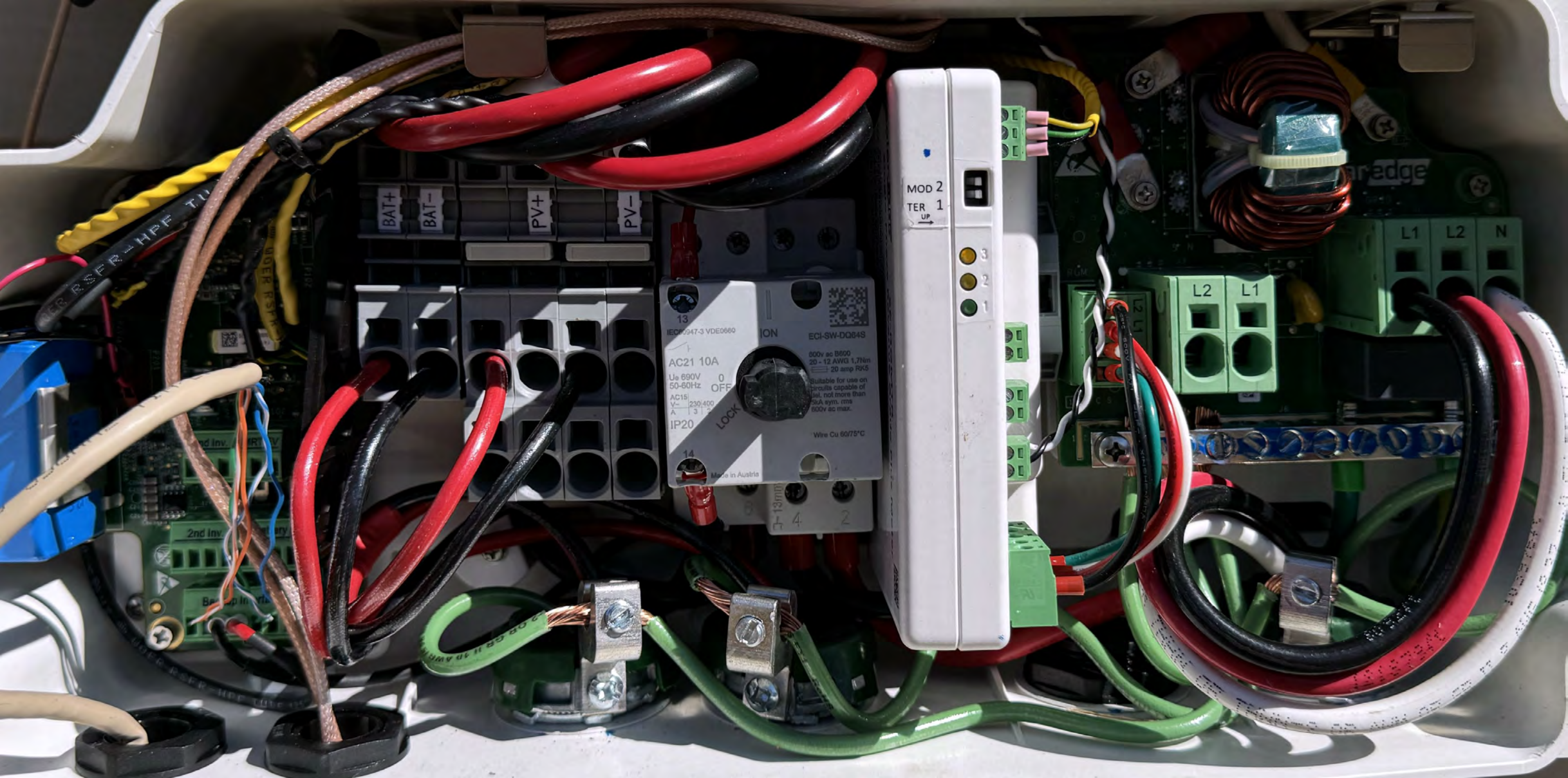
INV1



CT
L1
CT
L2
N/A

UCT

UCT



BAT+

BAT-

PV+

PV-

13
IEC60947-3 VDE0660
ION
ECI-SW-DQ84S
800V ac B600
20 - 12 AWG 1,71mm
20 amp RKS
U_e 690V
50-60Hz
AC15
V_e 230/400
A 13/12
IP20
LOCK
OFF
Suitable for use on
circuits capable of
not more than
20A sym. rms
600V ac max.
Wire Cu 60/75°C
Made in Austria
14

MOD 2
TER 1
UP

3
2
1

L2
L1

L1
L2
N

DANGER	PELIGRO	DANGER
HAZARDOUS VOLTAGE. WILL CAUSE SEVERE INJURY OR DEATH.	VOLTAJE PELIGROSO. PUEDE CAUSAR HERIDAS SEVERAS O LA MUERTE.	TENSION DANGEREUSE. PEUT CAUSER DES BLESSURES GRAVES OU LA MORT.
Never operate switch with cover open.	Nunca opere el interruptor con la cubierta abierta.	Ne jamais manoeuvrer l'interrupteur lorsque le couvercle est ouvert.
If fused, turn OFF switch before removing or installing fuse.	Si el interruptor usa fusible, baje su palanca a la posición fuere "OFF" antes de retirar o instalar fusibles.	S'il est muni d'un fusible, mettre l'interrupteur hors circuit (OFF) avant d'enlever ou d'installer un fusible.
Always use a properly rated voltage sensing device at all line and load side fuse clips (if fused) or load side terminals (if non-fused) to confirm switch is OFF.	Mida el voltaje con un dispositivo de medición adecuado en lado de carga de los clips de fusibles (si los usa) o en las terminales de carga (cuando no usa fusibles) para comprobar que el interruptor está desenergizado.	Toujours utiliser un dispositif de détection de la tension dont les valeurs nominales sont appropriées, et le côté charge du porte-fusible (muni d'un fusible) ou les bornes côté charge (sans fusible) pour confirmer que l'interrupteur est hors circuit (OFF).
Turn OFF power ahead of switch before doing any work inside. Replace all parts. Close cover before turning power ON.	Desconectar la alimentación del interruptor antes de trabajar dentro del mismo. Reemplazar todas las partes. Cerrar la cubierta antes de energizar el interruptor.	Couper l'alimentation en amont de l'interrupteur avant toute intervention. Remplacer les pièces. Fermer le couvercle avant de remettre sous tension.

DG222NRB

Series B
GENERAL DUTY SAFETY SWITCH
Type 3R Enclosure - Rainproof

TERMINALS SUITABLE FOR AL-CU WIRE.

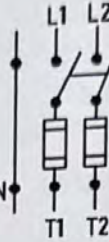
INTERRUPTOR DE SEGURIDAD DE SERVICIO GENERAL
Gabinete NEMA 3R - A Prueba De Lluvia

TERMINALES ADECUADAS PARA CONDUCTORES DE AL-CU.

INTERRUPTEUR DE SÉCURITÉ À USAGE GÉNÉRAL
Enveloppe De Type 3R - A L'épreuve De La Pluie

BORNES CONVENANT POUR CONDUCTEURS AL-CU.

60 Amperes 120/240, 240, 127/220 V ~ 60Hz 3W S/N, 3H N/S, 3F N/S



Horsepower Ratings	KW(Caballos de potencia)		Régimes "Horsepower"		
	1 Phase/1 Fase		3 Phase/3 Fase *		2 Pole/2 Polo ...
Volts / Tension / Voltaje	Std. / Est	Max.	Std. / Est	Max.	
120 / 127 ~	1 1/2 (1,119)	3 (2,238)	3 (2,238)	7 1/2 (5,60)	-
240 ~	3 (2,238)	10 (7,46)	7 1/2 (5,60)	15 (11,19)	-

*For grounded B Phase systems only.
Maximum fuse size 60A
The starting current of motors of more than the standard horsepower ratings may require the use of fuses with appropriate time-delay characteristics. Continuous load current not to exceed 80% of the rating of fuses employed in other than motor circuits.
Suitable for use as service equipment.
Suitable for use on a circuit capable of delivering not more than 100,000 RMS symmetrical amperes, 240 V - maximum, when Class R fuses are used. Fuse kit DS16FK is required for R fuses.
DANGER-Unless Class R fuses are used, this switch may present a risk of fire and personal injury if installed on circuits capable of delivering more than 10,000 RMS symmetrical amperes.
When used with Class K or H fuses, suitable for use on a circuit capable of delivering not more than 10,000 RMS symmetrical amperes, 240 volts maximum.
Experience has shown that renewable fuses can cause overheating problems and thus the use of renewable fuses is not recommended.
Use 60°C or 75°C wire.
Lug torque / Hex across flats / 5/32" / 100 LB. - In
Wire range
14 - 1/0 AWG, 2.1 a 53.5 mm² AL - CU

Accessories
Install per instructions supplied with kit.
R fuse kit DS16FK
Ground lug kit DG030GB
Neutral kit DG100NB
3/4" (19.05mm) Hub size DS075H1
1" (25.40mm) Hub size DS100H1
1 1/4" (31.75mm) Hub size DS125H1
1 1/2" (38.10mm) Hub size DS150H1
2" (50.80mm) Hub size DS200H1

Accesorios
Instalar de acuerdo a instrucciones incluidas en los accesorios.
Juego adaptador para fusible tipo "R" DS16FK
Juego de partes para terminal de tierra DG030GB
Juego de neutro DG100NB
3/4" (19.05mm) Tamaño de cople DS075H1
1" (25.40mm) Tamaño de cople DS100H1
1 1/4" (31.75mm) Tamaño de cople DS125H1
1 1/2" (38.10mm) Tamaño de cople DS150H1
2" (50.80mm) Tamaño de cople DS200H1

Accessoires
Installer conformément aux directives fournies avec l'ensemble.
Ensemble pour fusible R DS16FK
Ensemble de bornes de MALT DG030GB
Ensemble de neutres DG100NB
3/4" (19.05mm) Calibre des manchons DS075H1
1" (25.40mm) Calibre des manchons DS100H1
1 1/4" (31.75mm) Calibre des manchons DS125H1
1 1/2" (38.10mm) Calibre des manchons DS150H1
2" (50.80mm) Calibre des manchons DS200H1

*Sólo para sistemas con falla a tierra en fase B.
Adecuado para usarse como equipo de acometida
Tamaño máximo de fusible de 60 amperios
La corriente de arranque de motores con capacidad mayor a los caballos de potencia estándar puede requerir del uso de fusibles con características de retardo de tiempo apropiadas.
La corriente de carga continua no debe exceder el 80% de la capacidad del fusible empleado, con excepción de los circuitos de motores.
Adecuado para usarse en circuitos capaces de entregar no más de 100 000 A RCM simétricos, con 240 V- máximo, cuando se utilizan fusibles clase R. El juego adaptador de fusibles DS16FK se requiere para fusibles clase R.
PELIGRO-a menos que se utilicen fusibles clase R, este interruptor puede presentar riesgos de incendio y daño personal si es instalado en circuitos con capacidad de entregar más de 10 000 A RCM simétricos. Cuando se utiliza con fusibles clase K o H, es adecuado para usarse en circuitos con capacidad de entregar no más de 10 000 A RCM simétricos, con 240 V- máximo.
La experiencia muestra que los fusibles renovables pueden causar problemas de sobrecalentamiento, por lo tanto, el uso de fusibles renovables no es recomendable.
Usar conductores para 60°C ó 75°C.
Par de apriete de terminales / Tornillo de cabeza hexagonal / 3.97 mm / 11,3 N.m
Rango de la sección transversal del conductor
14 - 1/0 AWG, 2.1 a 53.5 mm² AL - CU

*Seulement pour des systèmes de phase B MALT.
Approprié comme équipement d'entrée de service
Calibre maximum du fusible 60A
L'intensité de démarrage des moteurs plus élevée que pour les "horsepower" standards peut exiger l'utilisation de fusibles ayant des caractéristiques de temporisation appropriées.
Toute charge continue ne devra pas excéder 80% du calibre des fusibles utilisés sauf s'il s'agit de circuits de moteurs.
Convient à un circuit de 100,000 ampères efficaces symétriques au plus, 240 V - maximum, lorsque des fusibles de classe R sont utilisés.
Ensemble de fusible DS16FK requis pour fusibles R.
DANGER-A moins d'utiliser des fusibles de classe R, cet interrupteur peut présenter des risques d'incendie et de blessures corporelles s'il est installé dans un circuit de plus 10,000 ampères efficaces symétriques. Si utilisé avec des fusibles K ou H, l'interrupteur sera approprié pour utilisation sur un circuit ne délivrant pas plus de 10,000 ampères RMS symétriques, 240V maximum.
L'expérience démontre que l'utilisation de fusibles renouvelables peut causer des problèmes de surchauffe et, par conséquent, ces fusibles ne sont pas recommandés.
Utiliser conducteur 60°C ou 75°C.
Torque aux bornes / Vis à tête six pans / 5/32" / 100 Lb. - Po.
Plage de conducteurs
14 - 1/0 AWG, 2.1 a 53.5 mm² AL - CU

PUB53724

DEC 20 2013

759045

LINE

SNAP-IN
2ND

SNAP-IN
2ND

REINSTALL AFTER WIRING

REINSTATE DESPUÉS DEL CABLEADO

RÉINSTALLER APRÈS L'INSTALLATION ÉLECTRIQUE

INSTALL. 1ST

