













/Instalador:

MP1

N
S
E
W

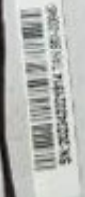


6

7

8

9



MP2
↑ / A la bola de:

/Instalador:

MP1

N
S
E
W

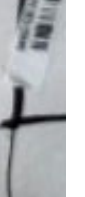
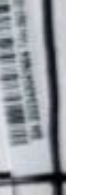
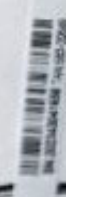
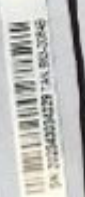


6

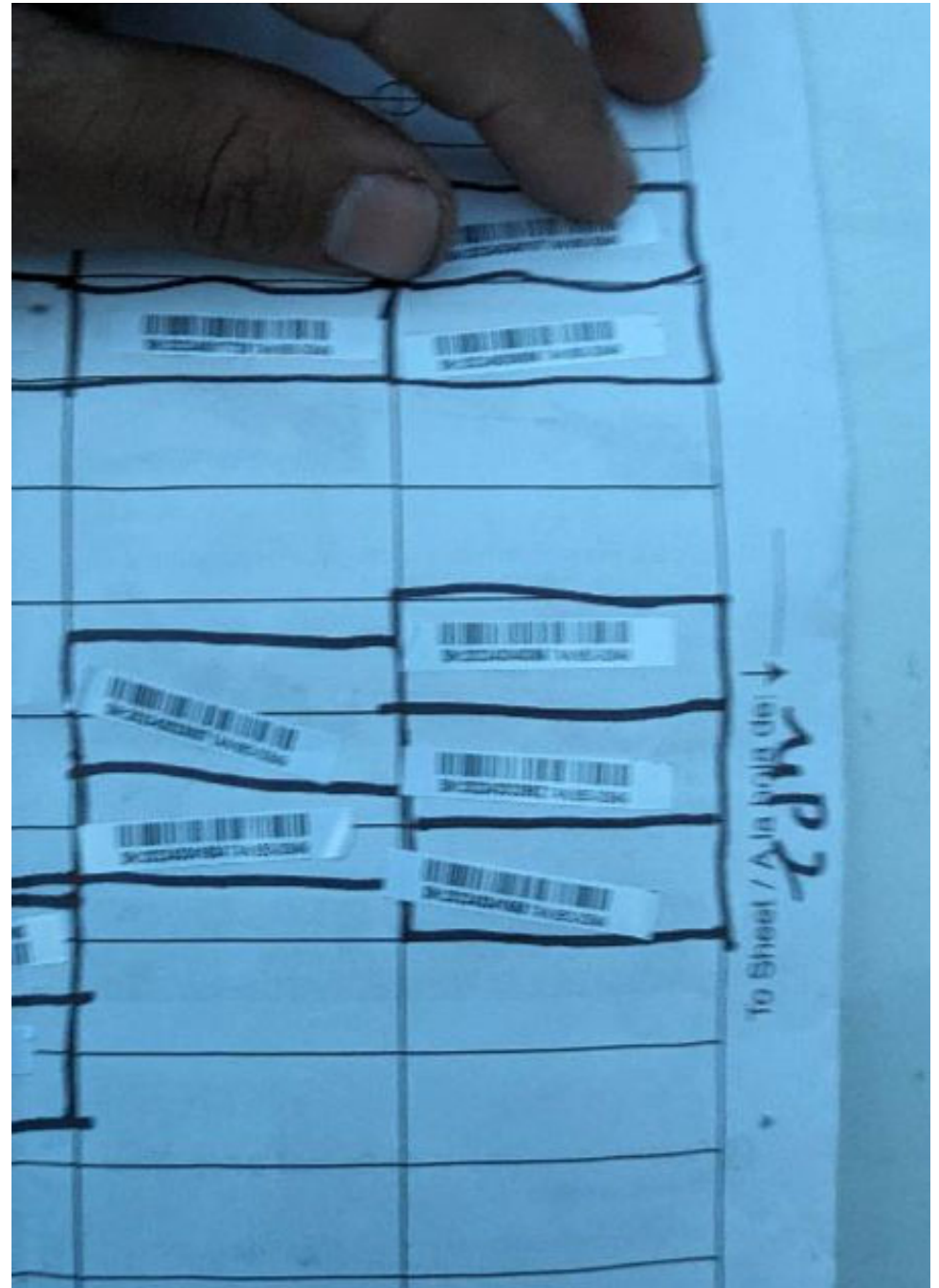
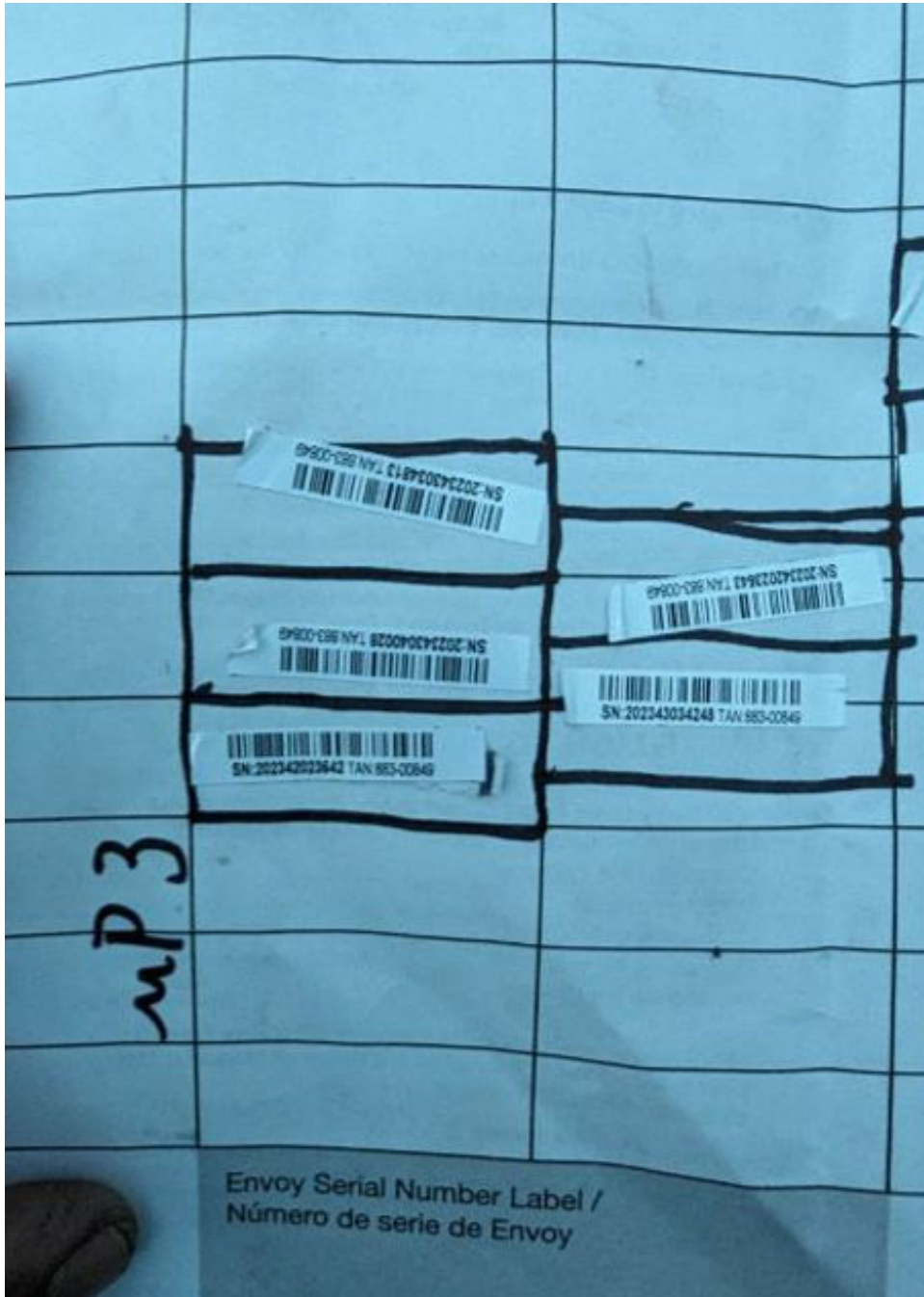
7

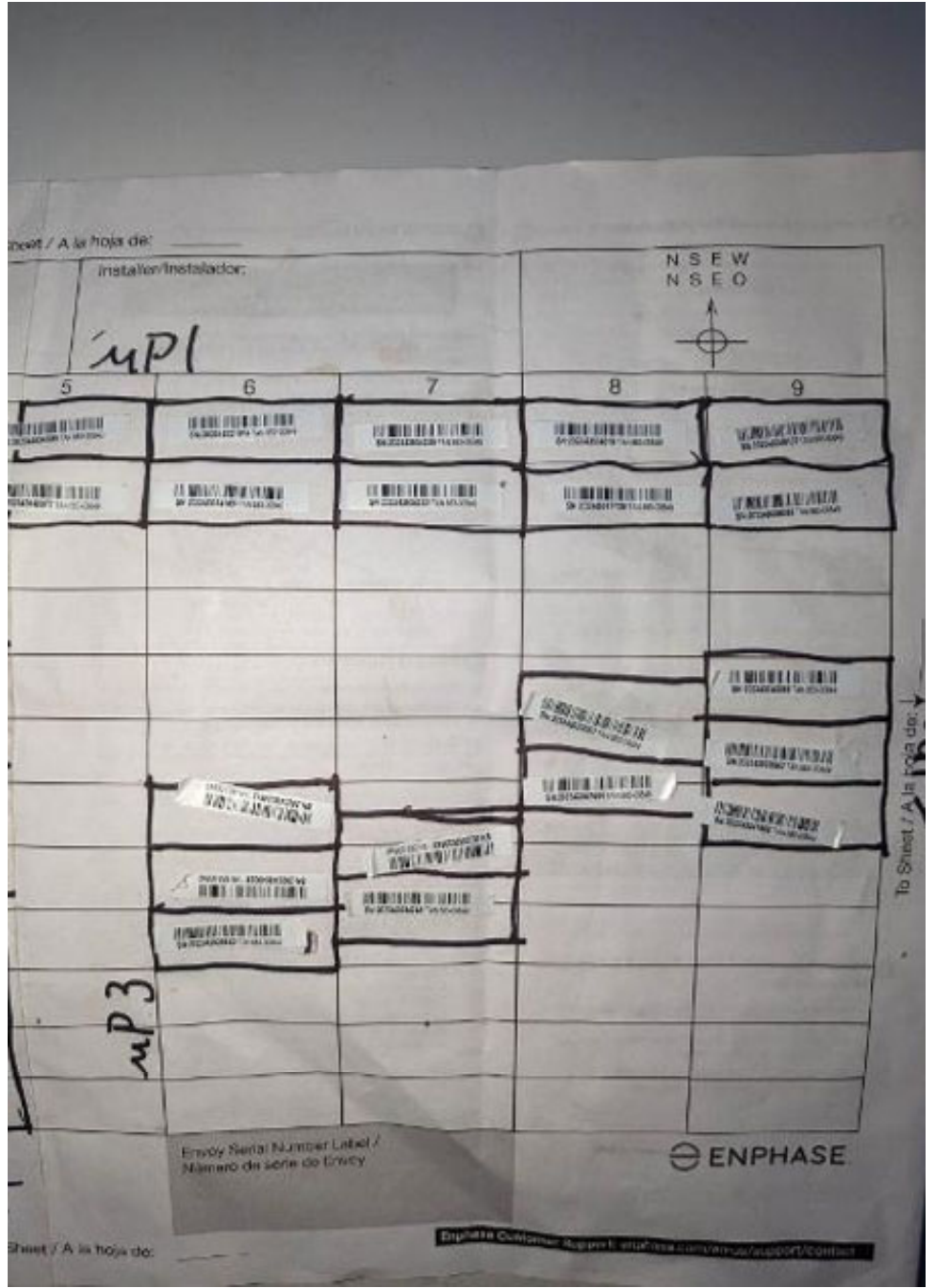
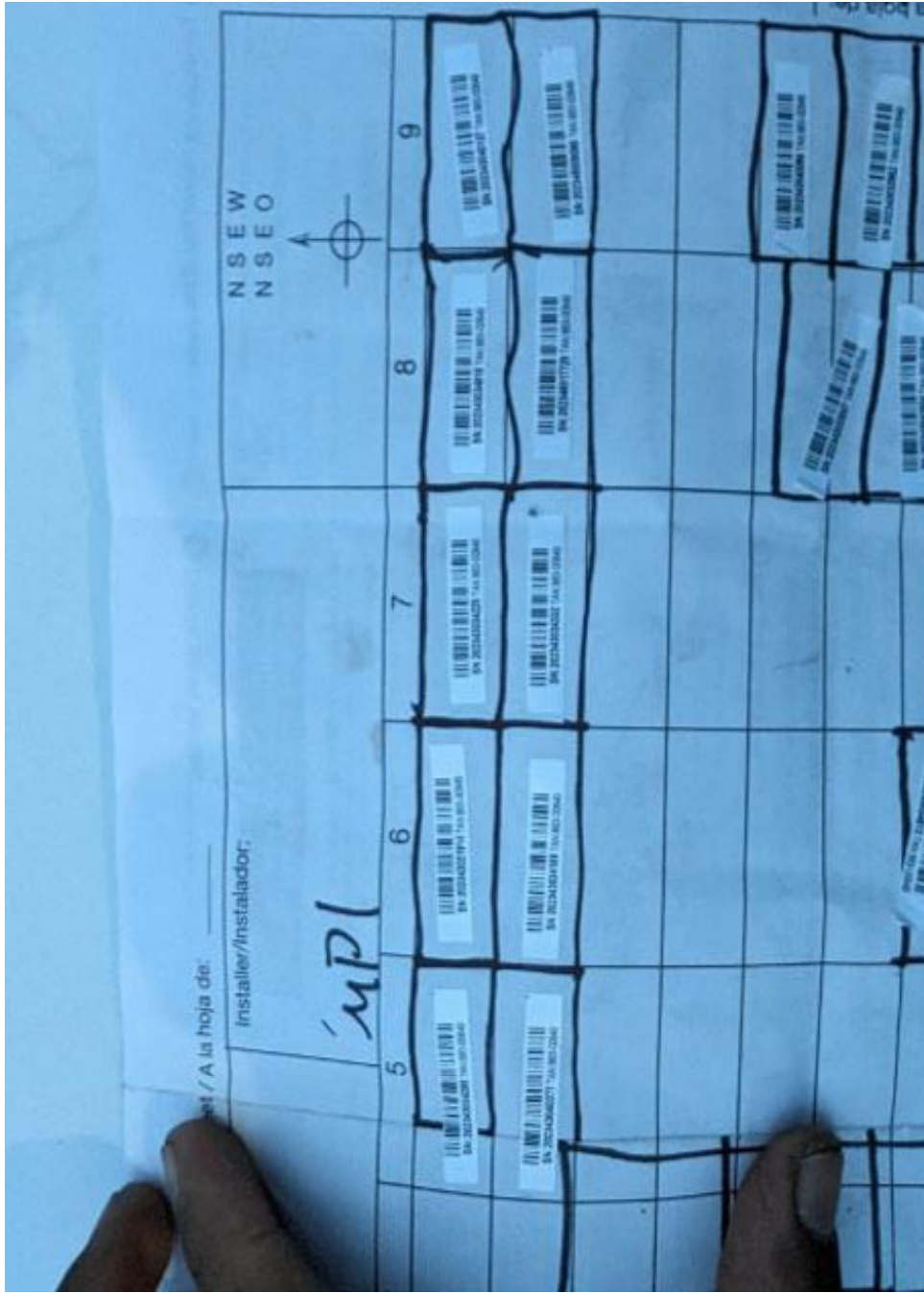
8

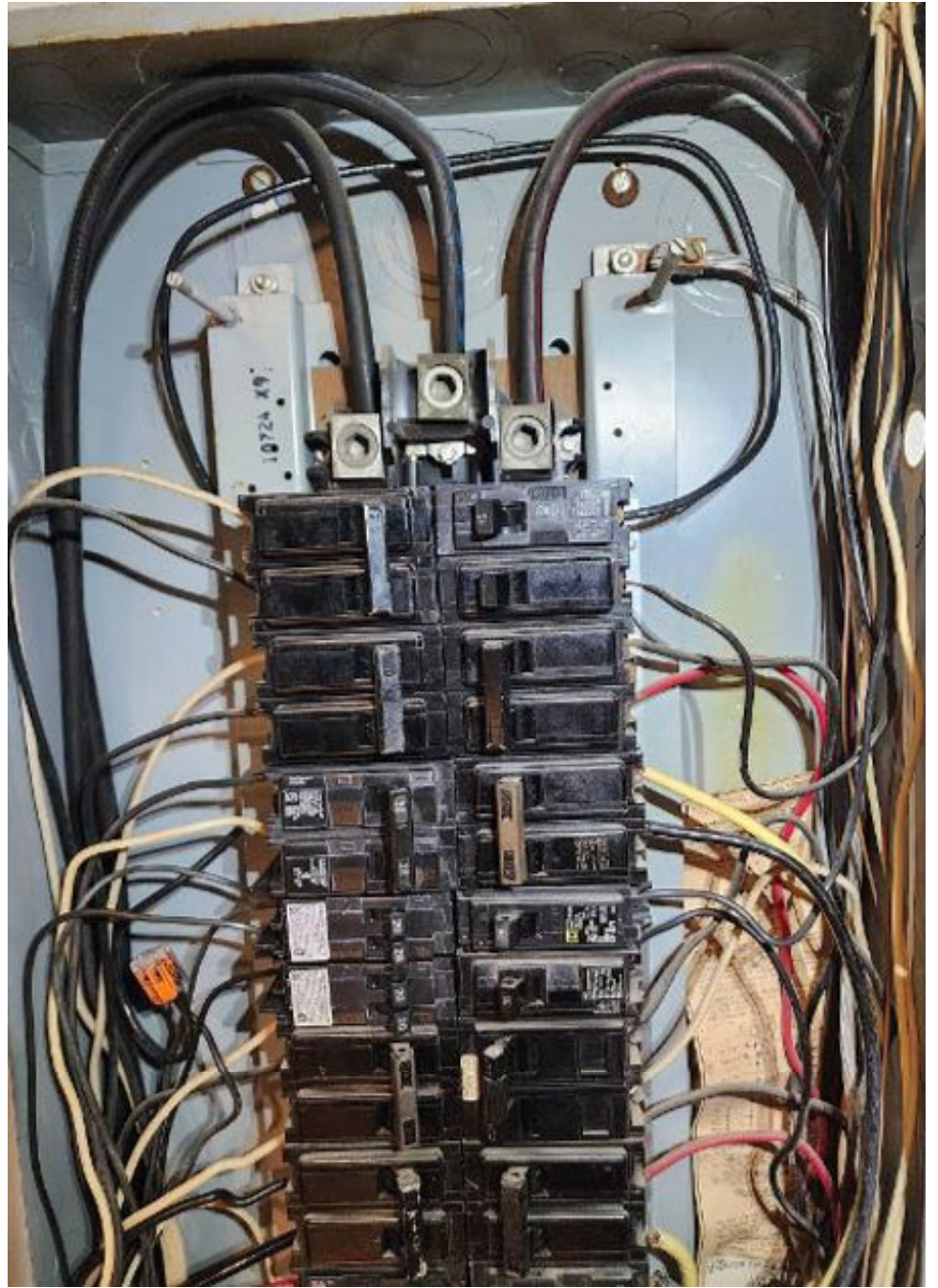
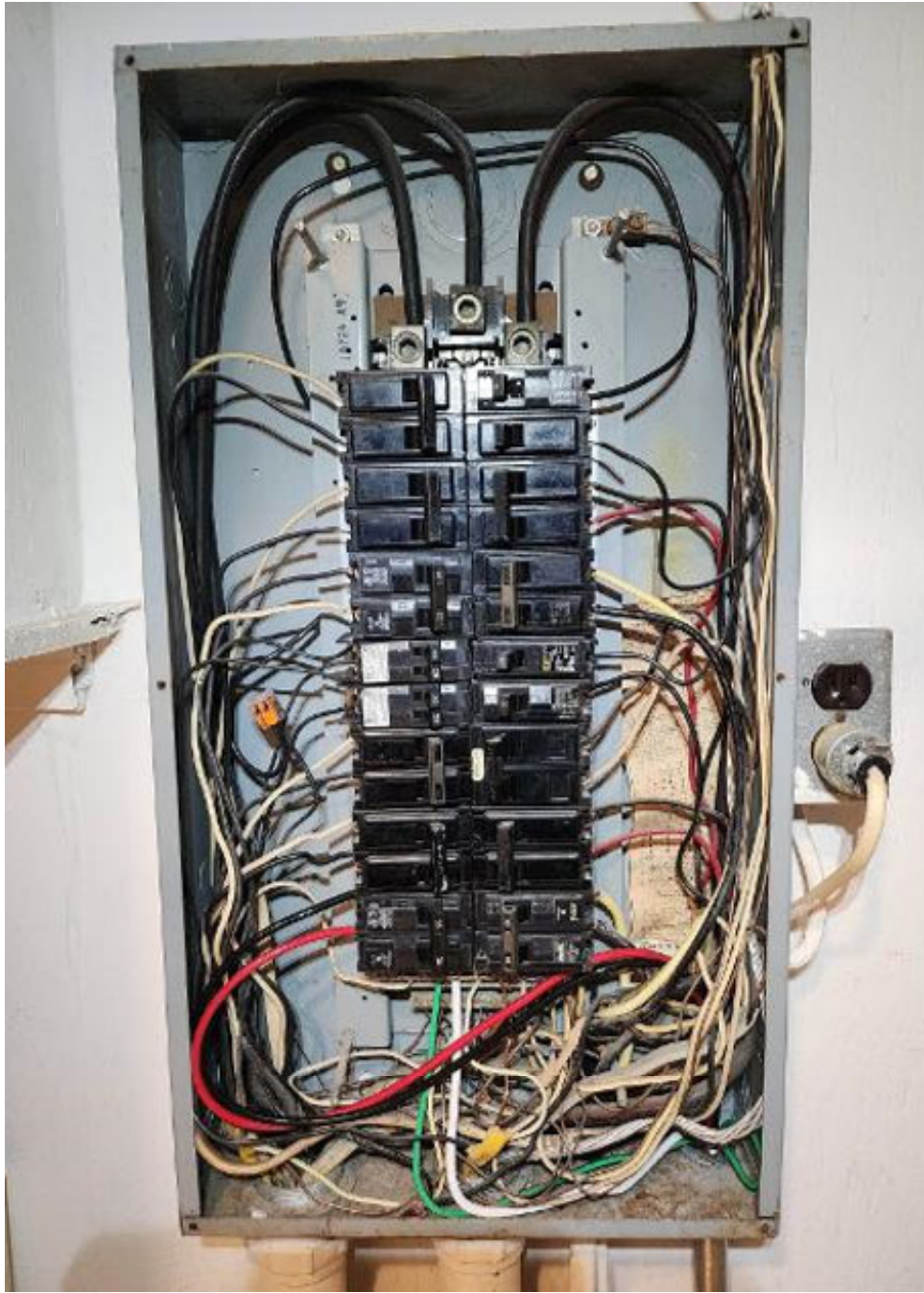
9

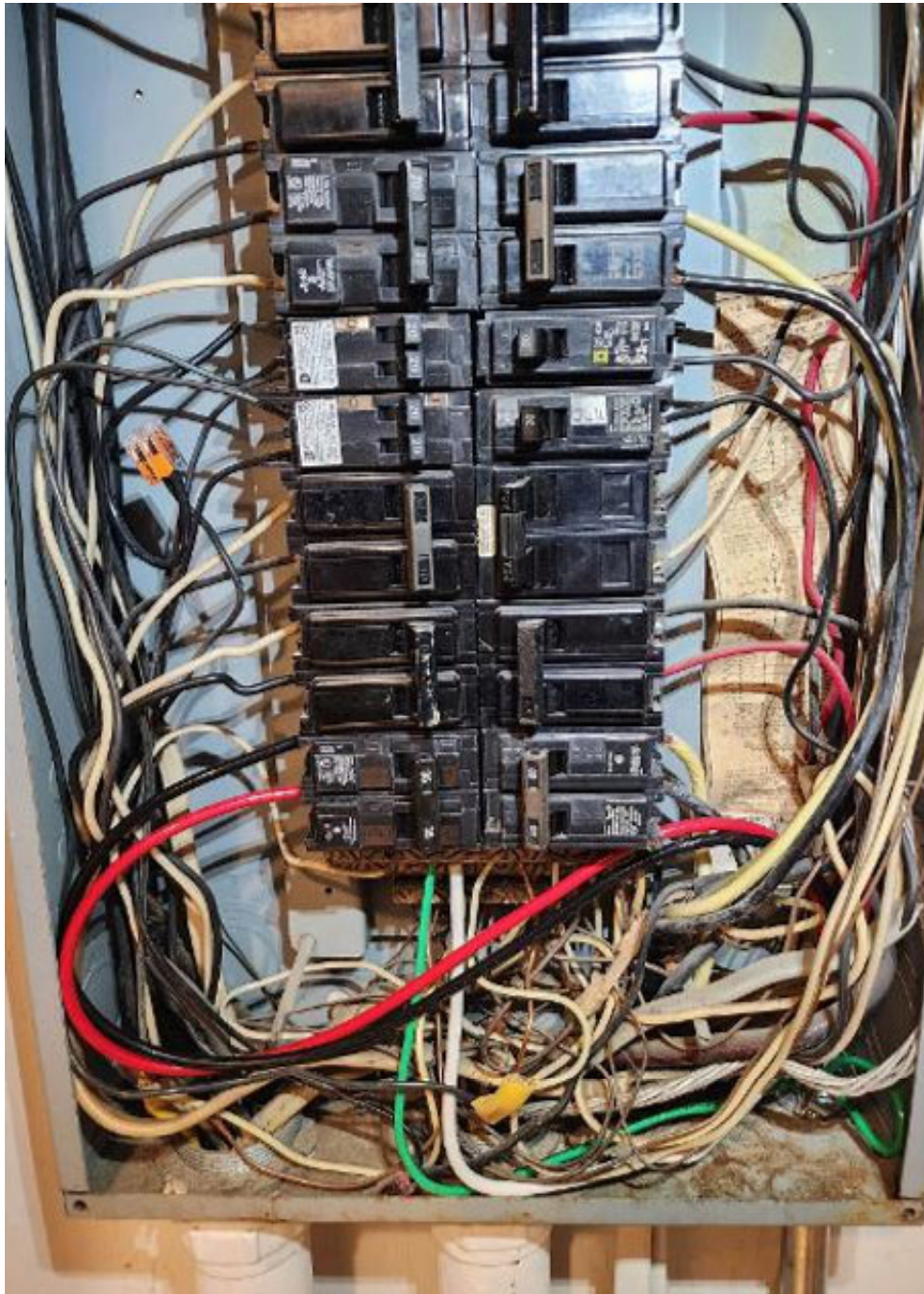


MP2
↑ / A la bola de:











Device scan button

Only used by installer during installation or to configure the system.
Starts/stop a 15-minute scan for devices over the power line.

All LEDs

- Flashing green when software upgrade is in progress
- Flashing amber when IQ Gateway is booting up.

On Power-Up, LEDs can take up to 30 seconds to glow.
When restarting, wait for 2 minutes after powering off the IQ Gateway, before powering it back on.



IQ Combiner 4
Photovoltaic
Combiner Box
X2-IQ-AM1-240-4
IEEE1547:2018 COMPLIANT



Electrical ratings

Voltage 240VAC, 60Hz
DG Breakers 80A MAX (combined)
DG Inputs 64A MAX (combined)
Output 65A MAX, 90A MAX feeder OCPD
Temperature 46°C MAX ambient
For DG breaker, use only Eaton BR series.

202335069942

P/N:

S/N: 202335069942

883-00353 17

Dedicated solar and DG Combiner Box - do not add loads
10 AMP or 15 AMP IQ Gateway Breaker not used for backfeed

Connection	Wire sizes	Torque	
DG Breaker (1, 2, 3, 4)	14-10 AWG	2.2 Nm (20 lb-in)	
	8 AWG	2.8 Nm (25 lb-in)	
	6-4 AWG	3.0 Nm (27 lb-in)	
60A Circuit Breaker only	4-1/0 AWG	5.0 Nm (45 lb-in)	
IQ Gateway Breaker	14-10 AWG	2.26 Nm (20 lb-in)	
Neutral and ground	Large screw	2-1/0 AWG 14-3 AWG	5.6 Nm (45 lb-in) 5.1 Nm (45 lb-in)
	Small screw	6 AWG	3.6 Nm (32 lb-in)
		8 AWG	2.6 Nm (23 lb-in)
10-14 AWG		2.3 Nm (20 lb-in)	
Main lug	10-4 AWG	5.0 Nm (45 lb-in)	
	3-2/0 AWG	5.6 Nm (50 lb-in)	

Copper conductors only, rated min. 75°C.
Follow NFPA 70 (NEC), or CSA C22.1 part 1, and all local codes.
For DG Breakers larger than 20A, use wire insulated for 90°C
based on 75°C ampacities.

Designed in California and New Zealand
Made in Mexico

For IQ-8 C
Forming S



IQ Combiner 4

Photovoltaic
Combiner Box

X2-IQ-AM1-240-4

IEEE1547:2018 COMPLIANT



Electrical ratings

Voltage 240VAC, 60Hz
DG Breakers 80A MAX (combined)
DG Inputs 64A MAX (combined)
Output 65A MAX, 90A MAX feeder OCPD
Temperature 46°C MAX ambient
For DG breaker, use only Eaton BR series.

202335069942

P/N:

S/N: 202335069942

883-00353 17

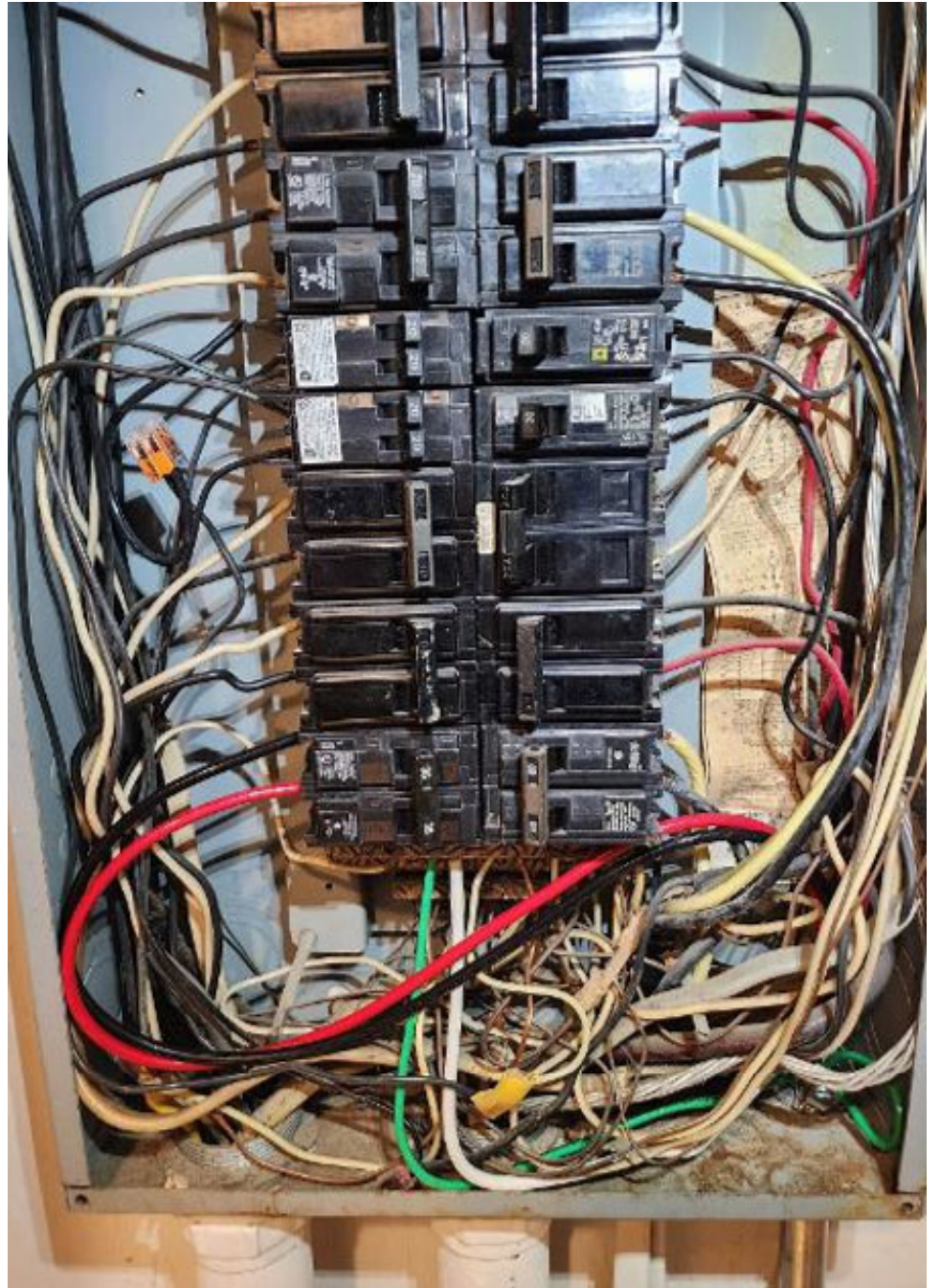
Dedicated solar and DG Combiner Box - do not add loads
10 AMP or 15 AMP IQ Gateway Breaker not used for backfeed

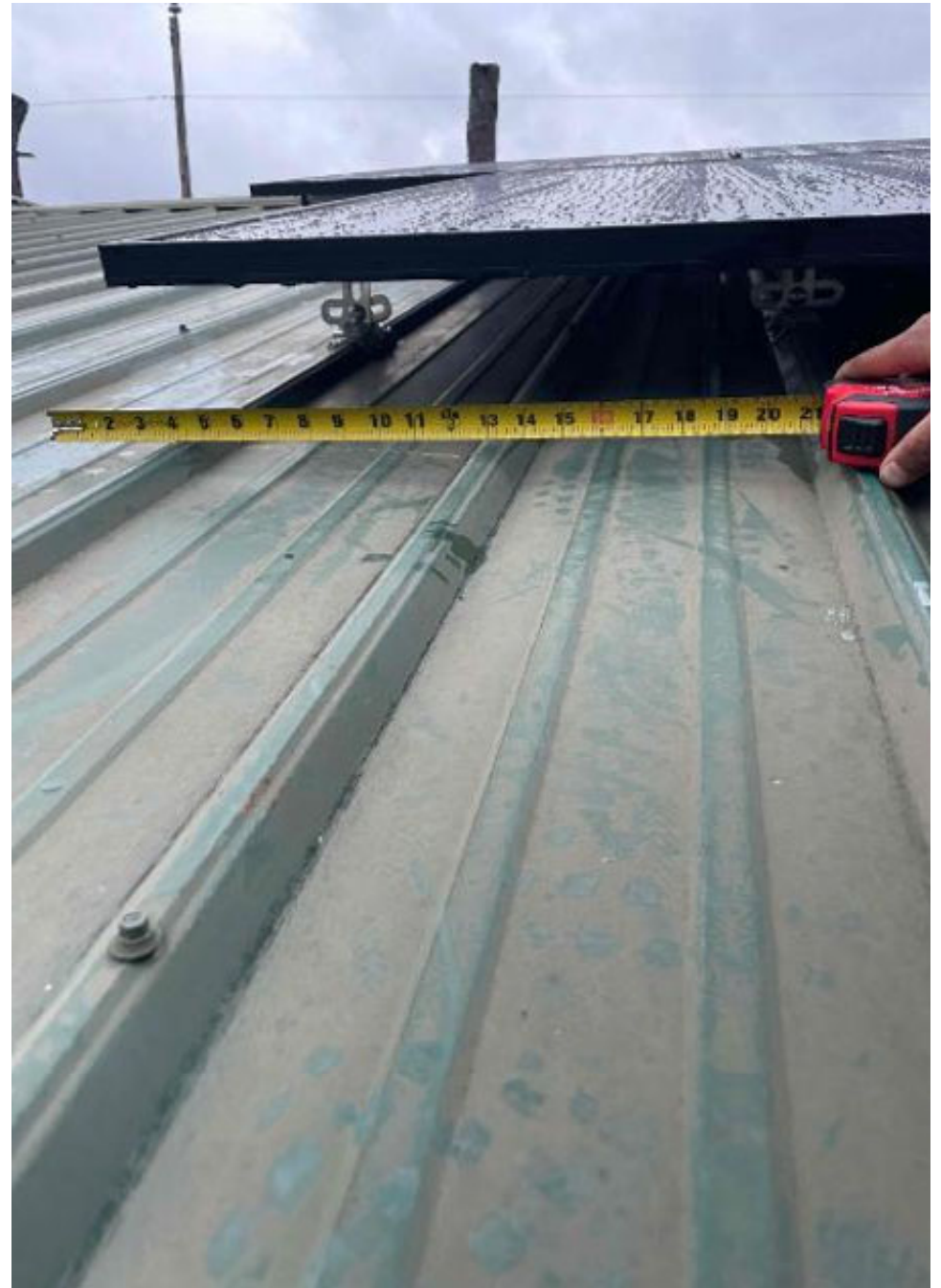
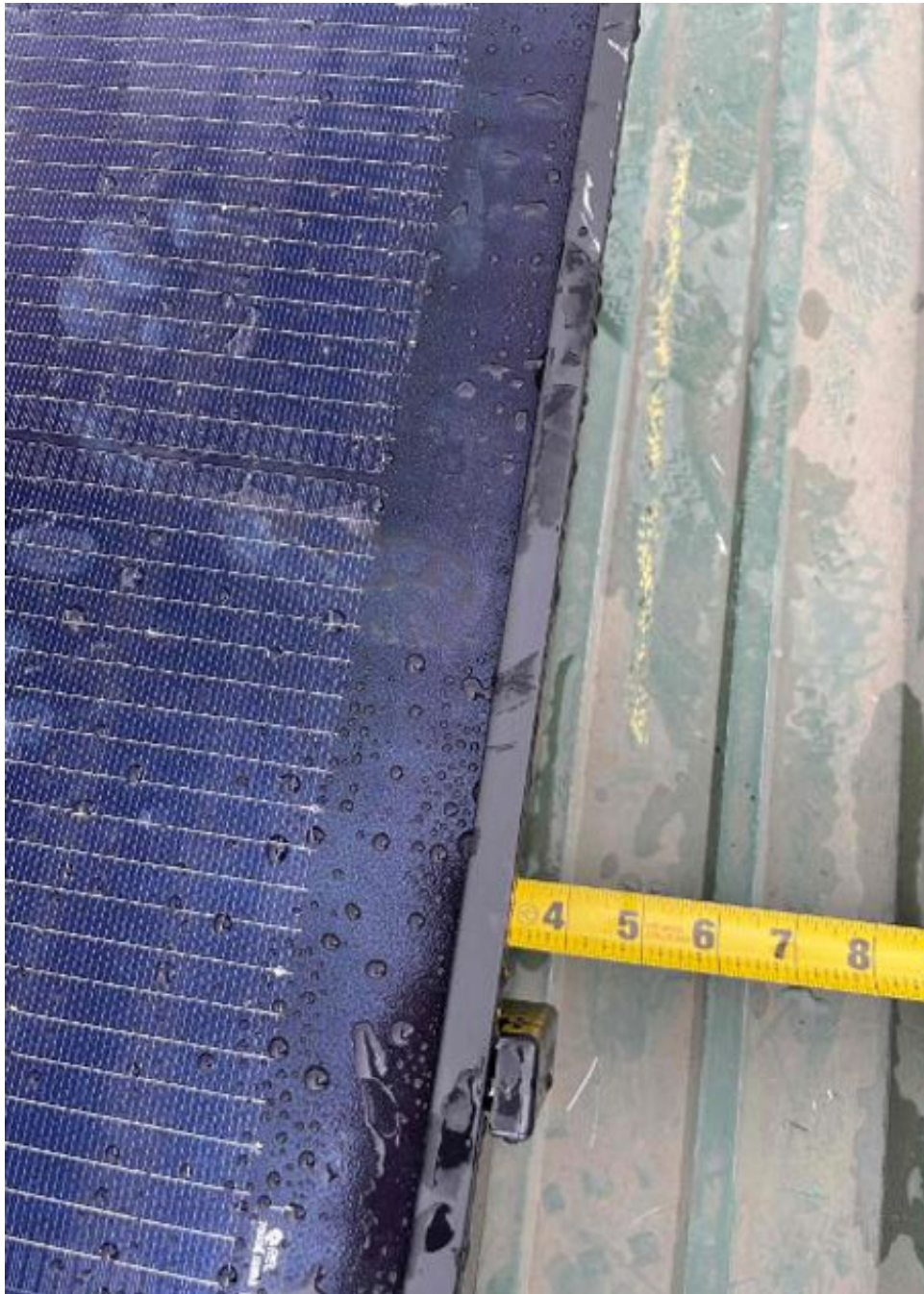
Connection	Wire sizes	Torque	
DG Breaker (1, 2, 3, 4)	14-10 AWG	2.2 Nm (20 lb-in)	
	8 AWG	2.8 Nm (25 lb-in)	
	6-4 AWG	3.0 Nm (27 lb-in)	
60A Circuit Breaker only	4-1/0 AWG	5.0 Nm (45 lb-in)	
IQ Gateway Breaker	14-10 AWG	2.26 Nm (20 lb-in)	
Neutral and ground	Large screw	2-1/0 AWG 14-3 AWG	5.6 Nm (45 lb-in) 5.1 Nm (45 lb-in)
	Small screw	6 AWG	3.6 Nm (32 lb-in)
		8 AWG	2.6 Nm (23 lb-in)
10-14 AWG		2.3 Nm (20 lb-in)	
Main lug	10-4 AWG	5.0 Nm (45 lb-in)	
	3-2/0 AWG	5.6 Nm (50 lb-in)	

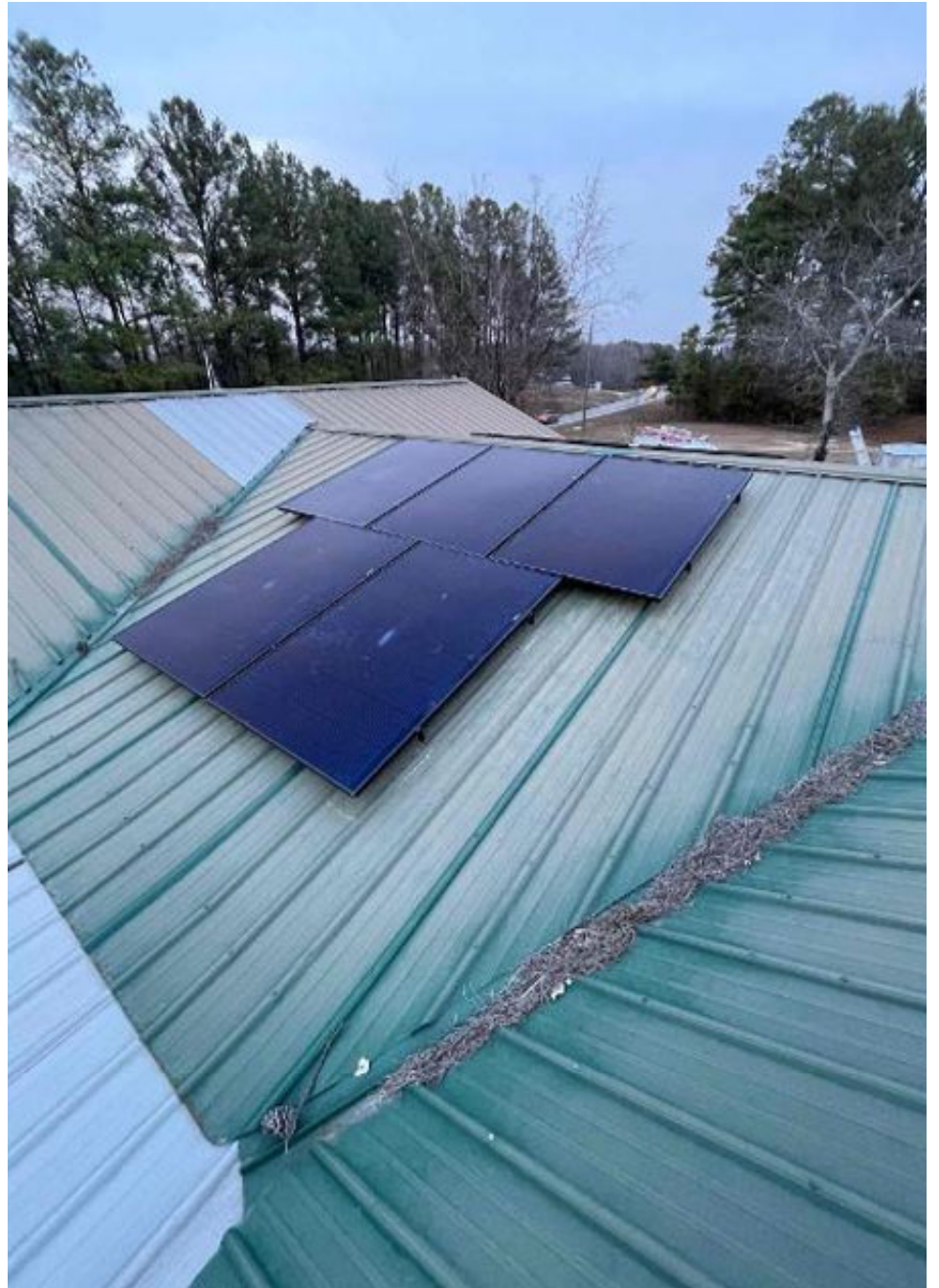
Copper conductors only, rated min. 75°C.
Follow NFPA 70 (NEC), or CSA C22.1 part 1, and all local codes.
For DG Breakers larger than 20A, use wire insulated for 90°C
based on 75°C ampacities.

Designed in California and New Zealand
Made in Mexico



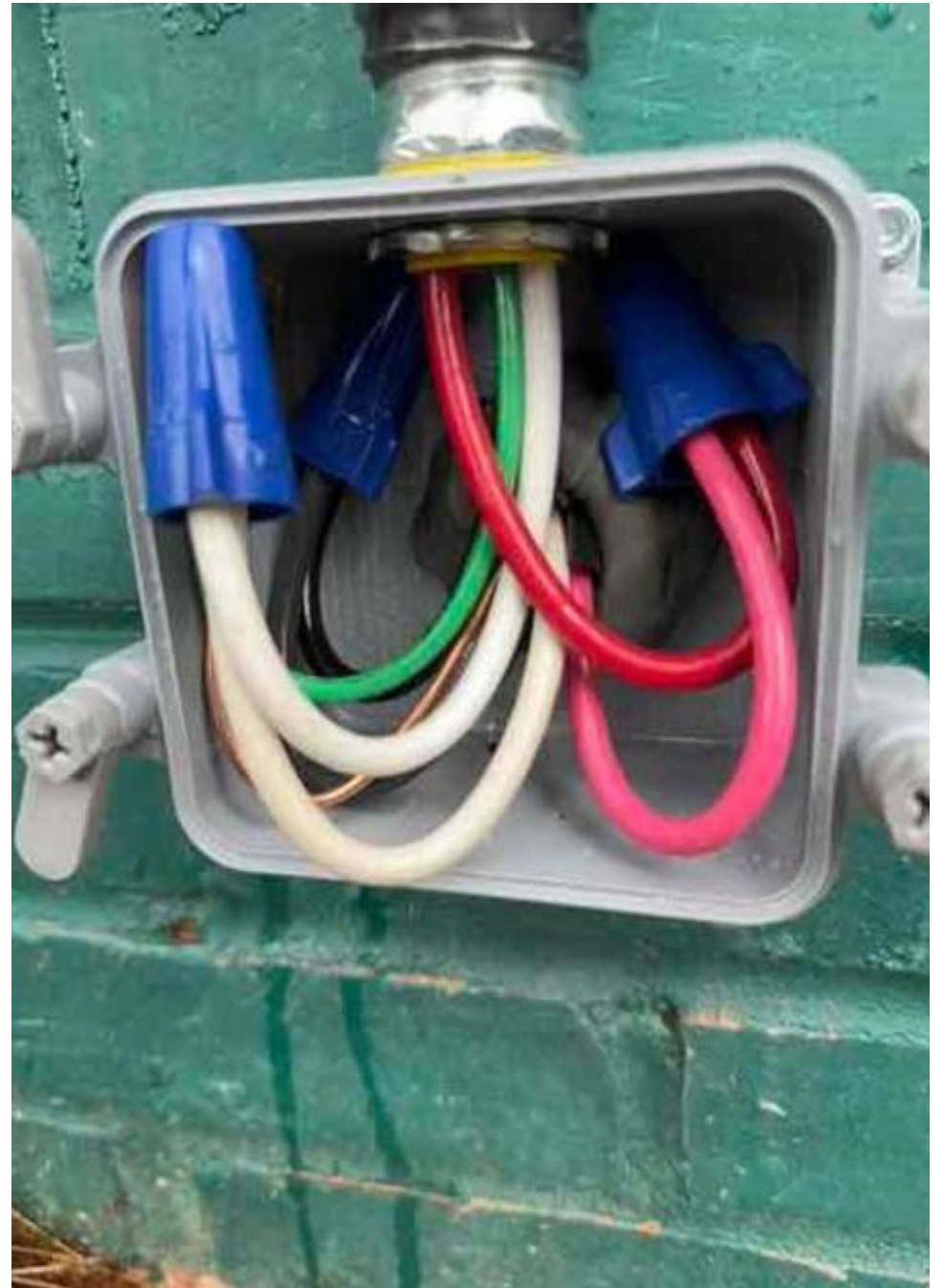




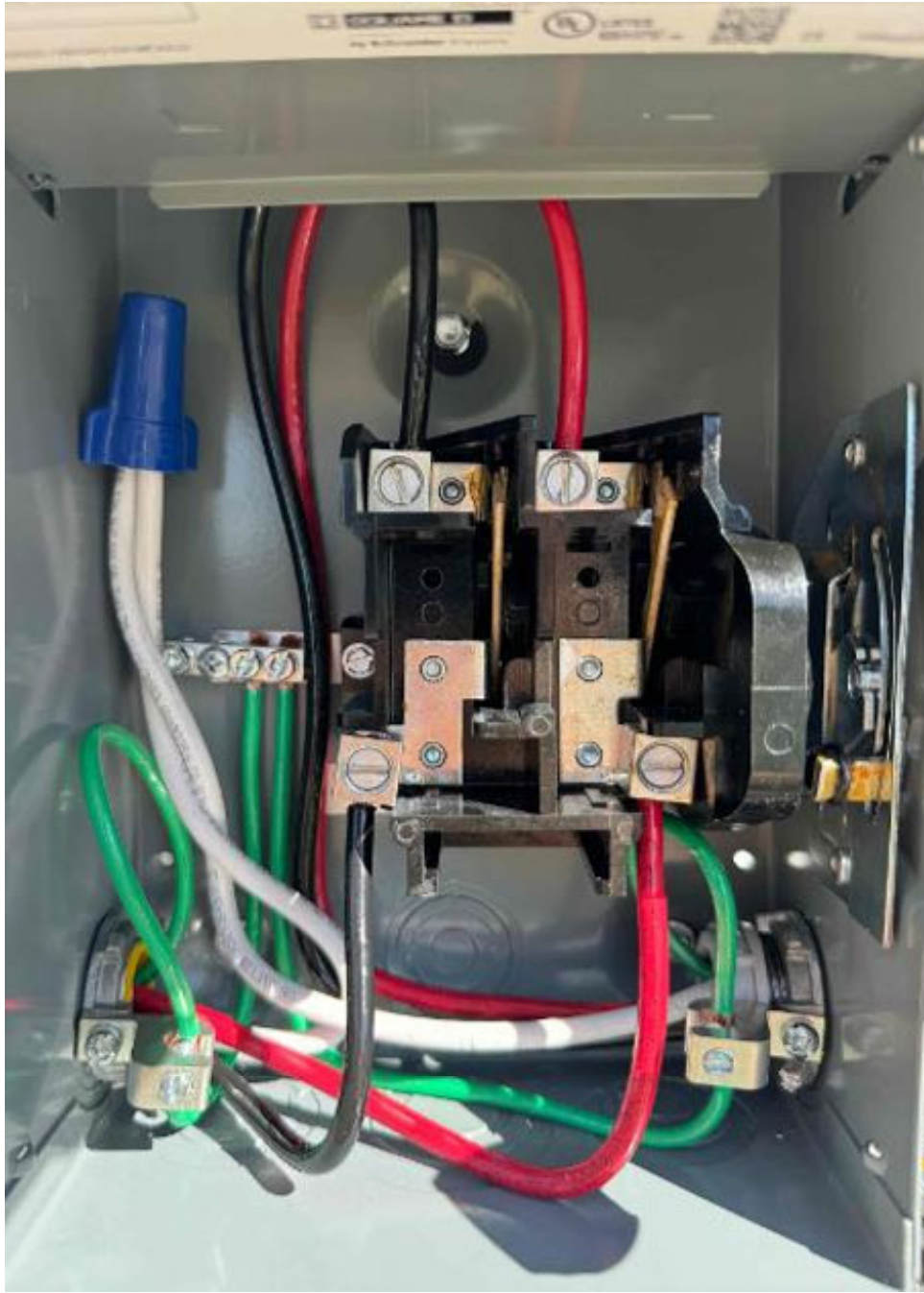




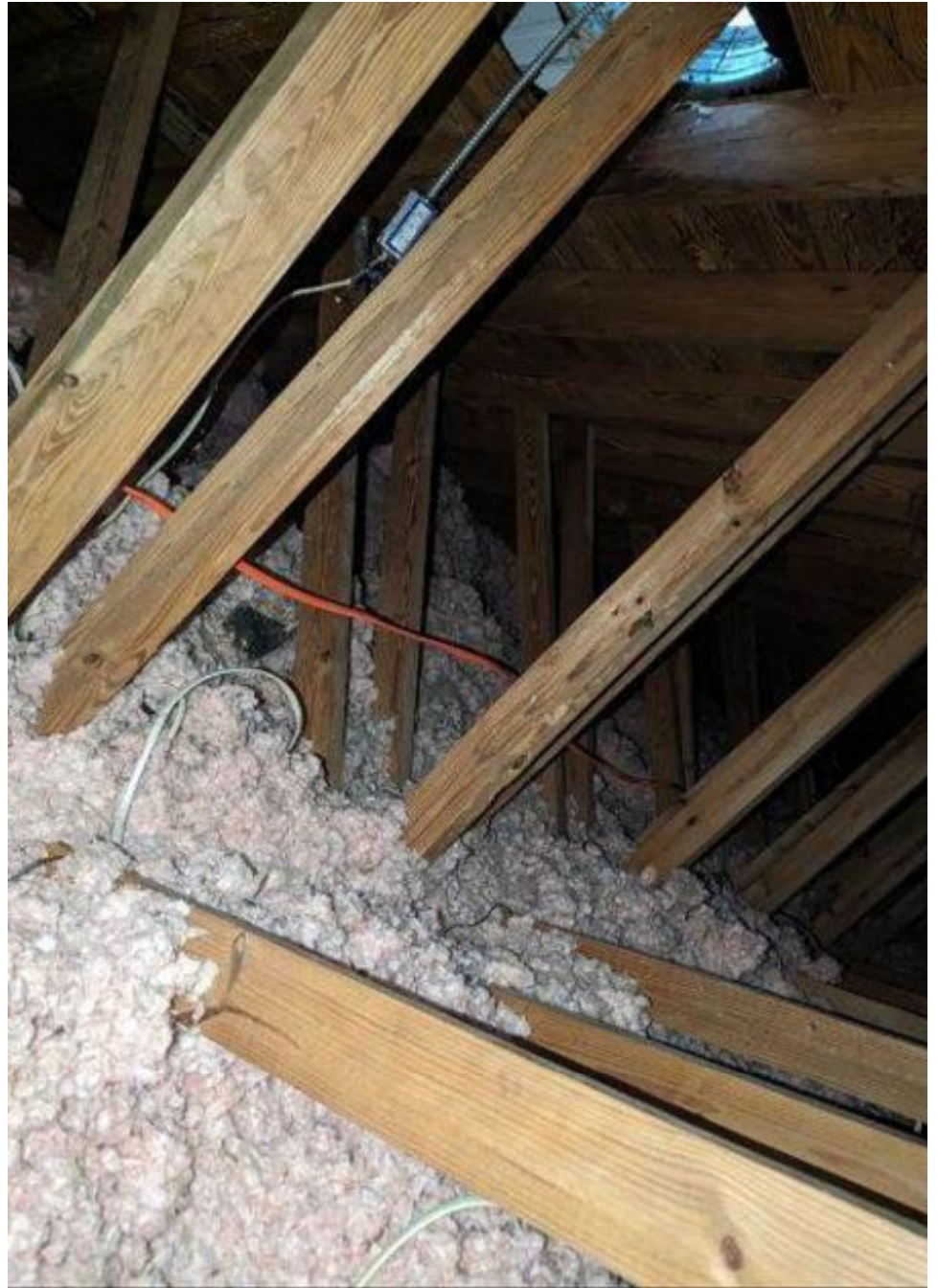


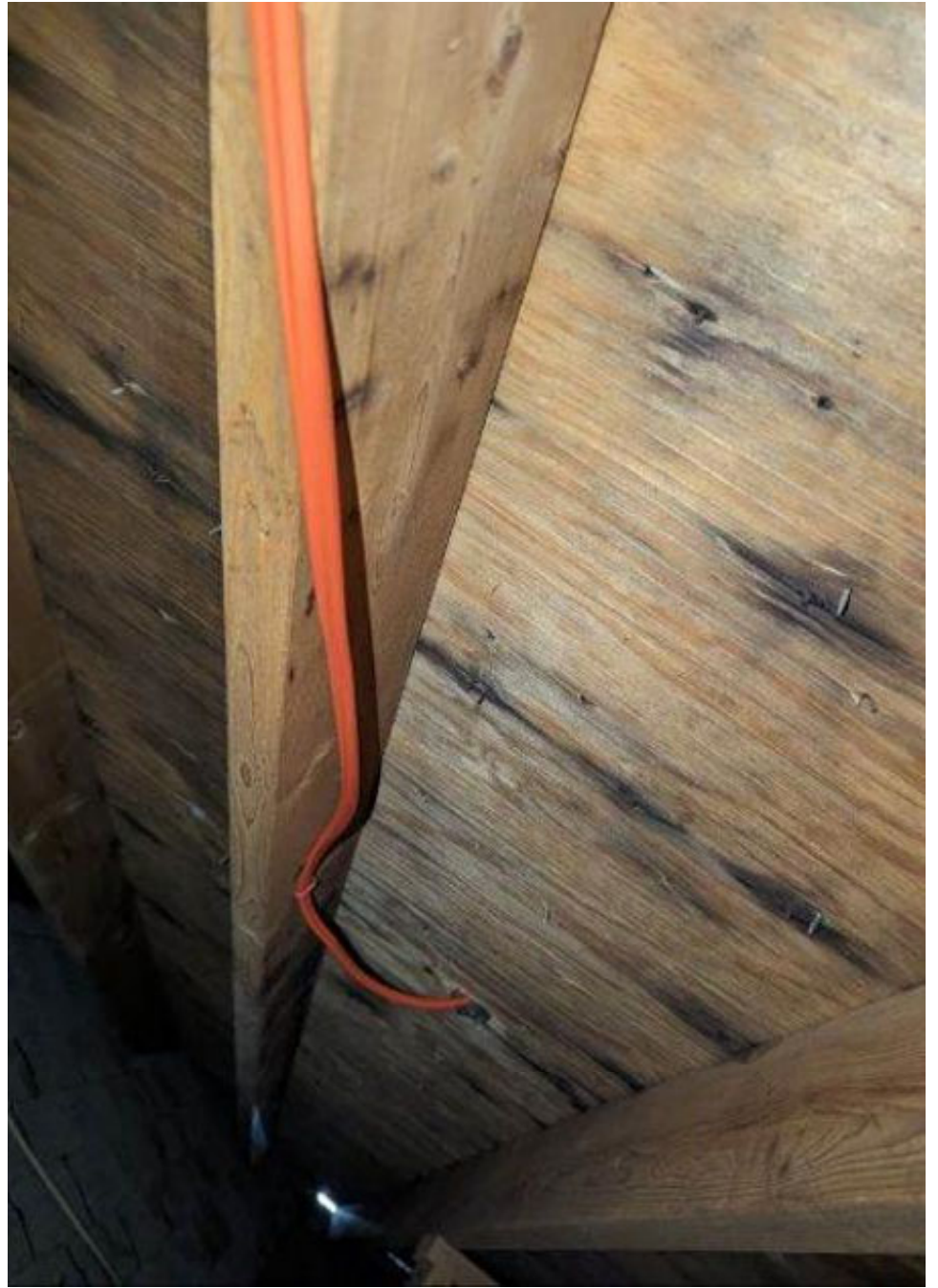


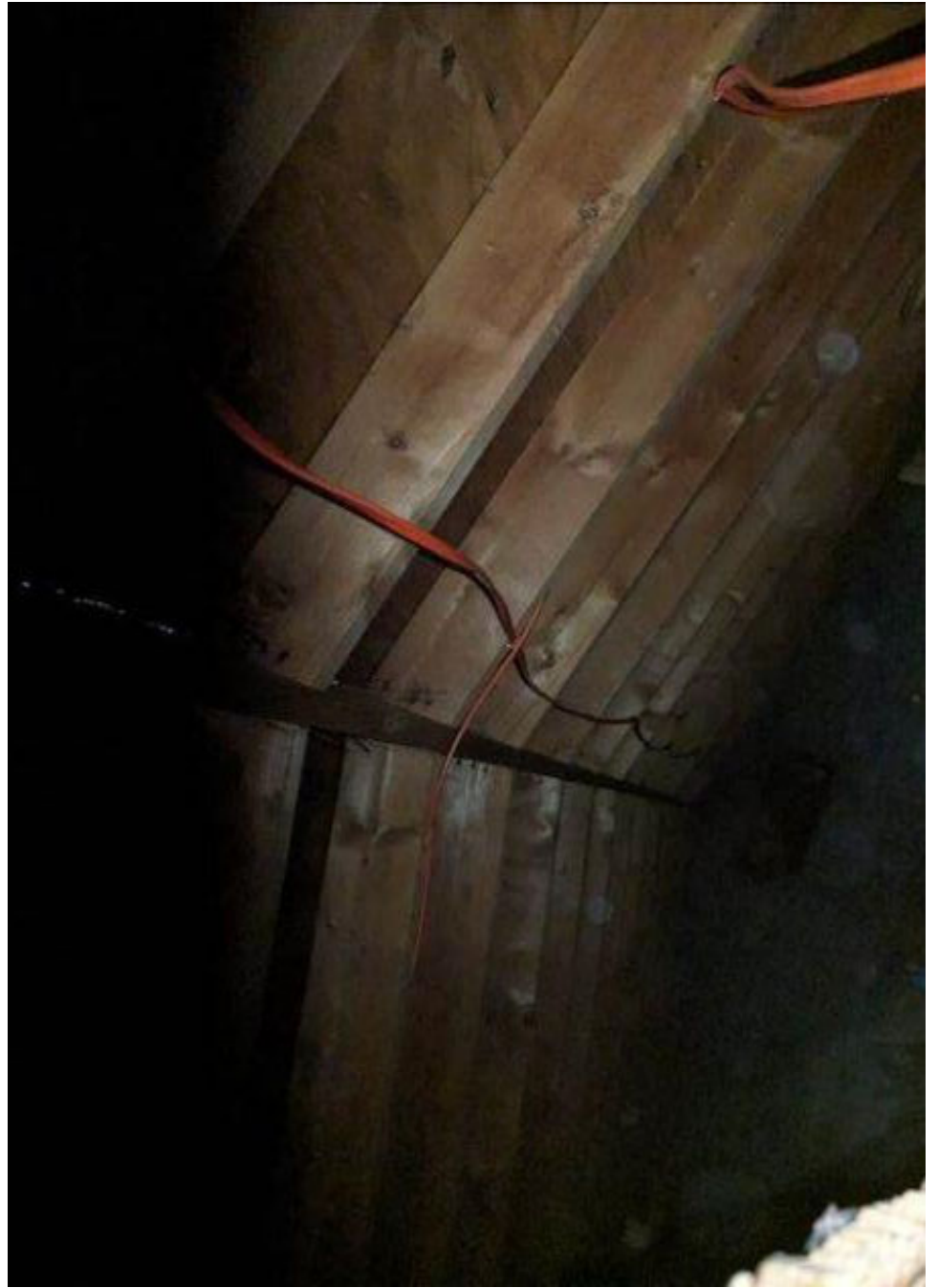


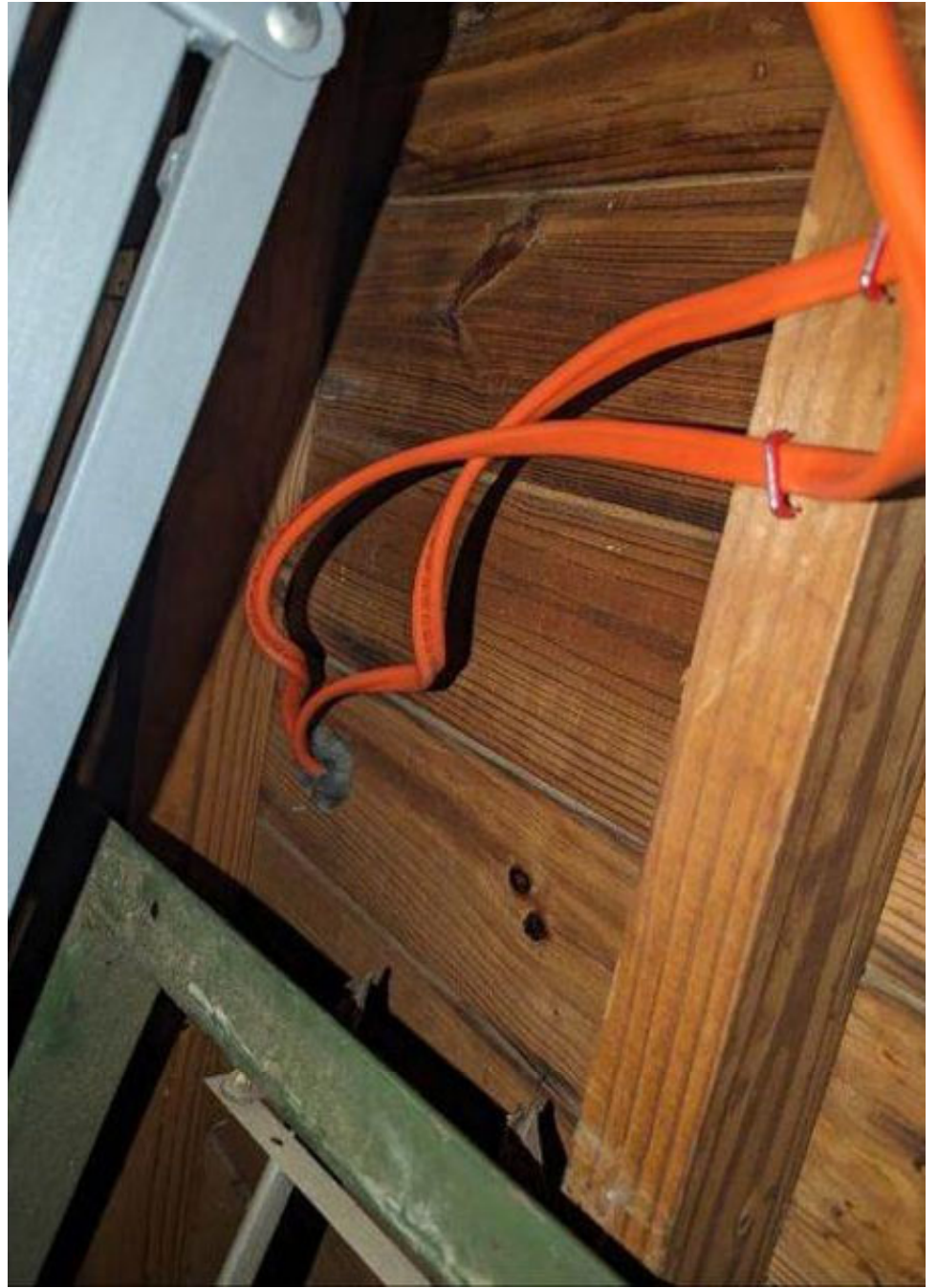
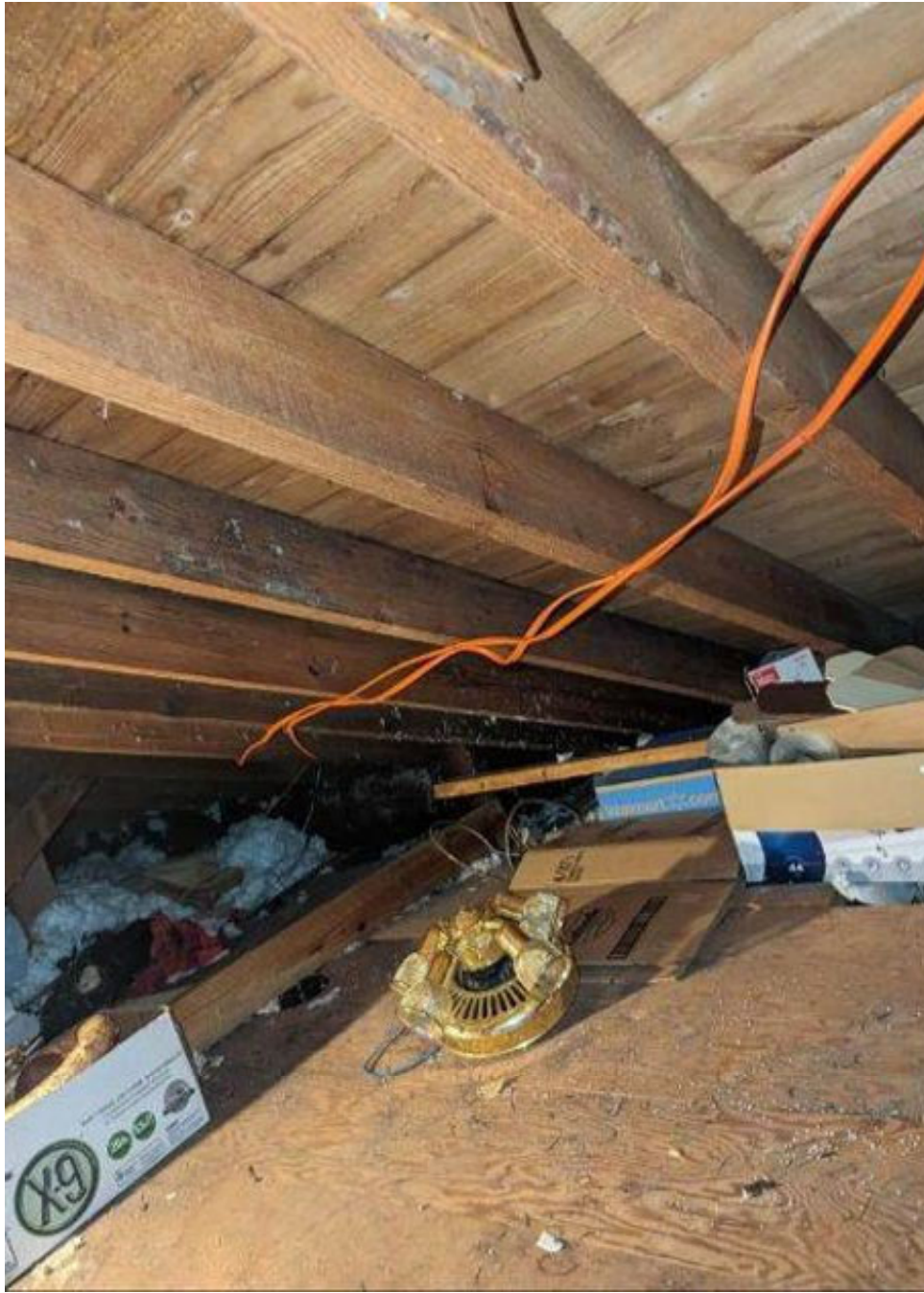


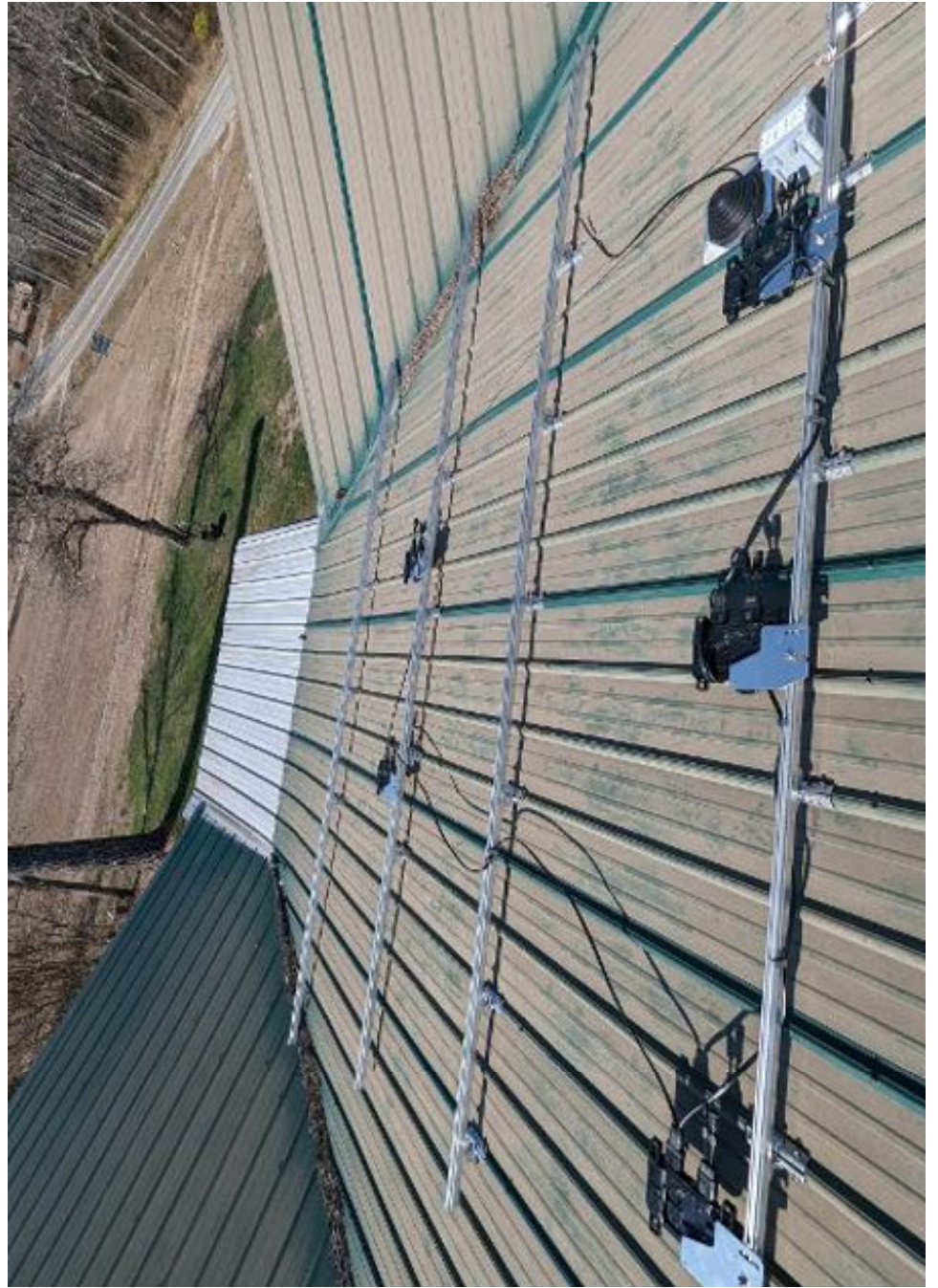


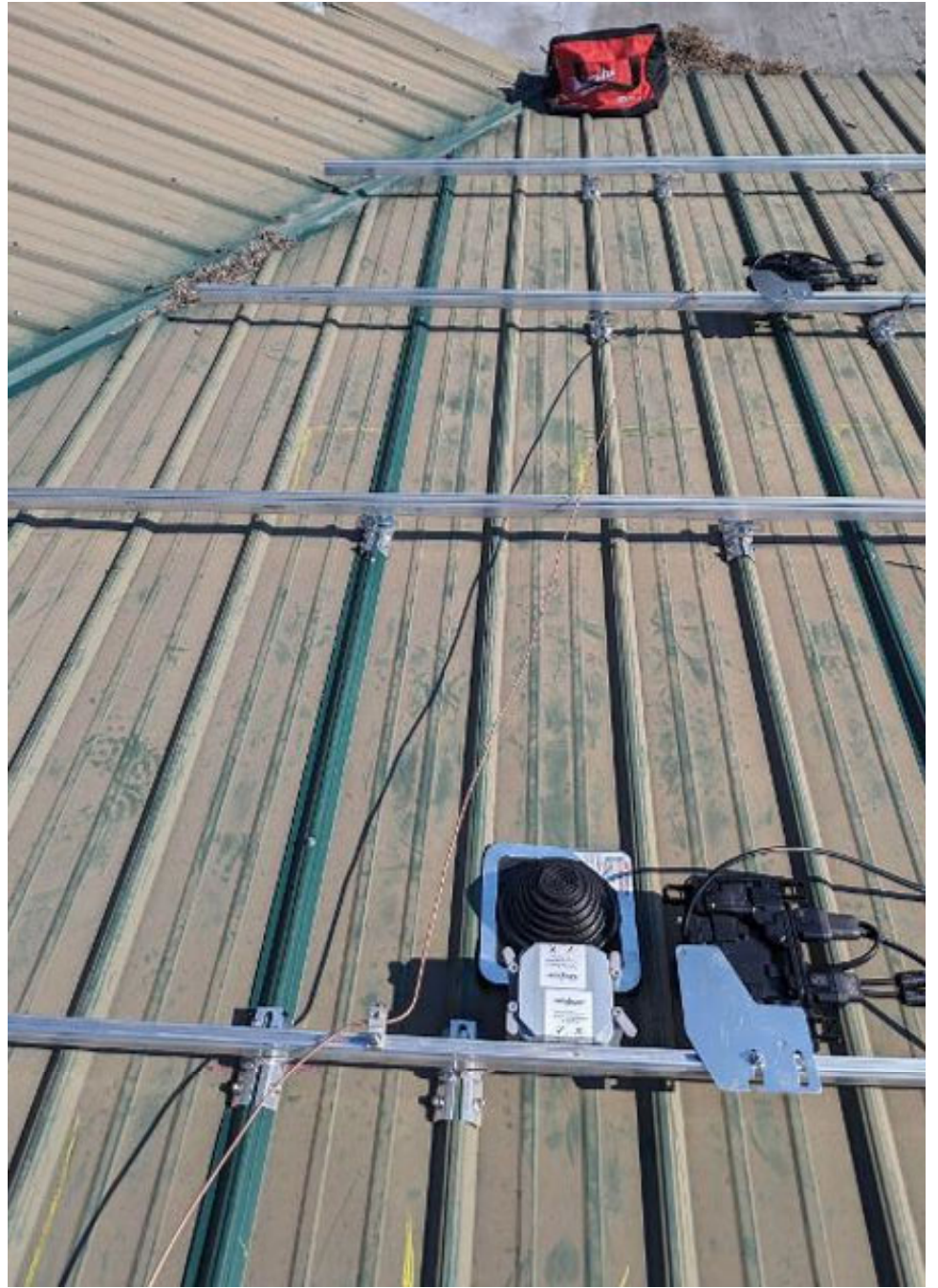
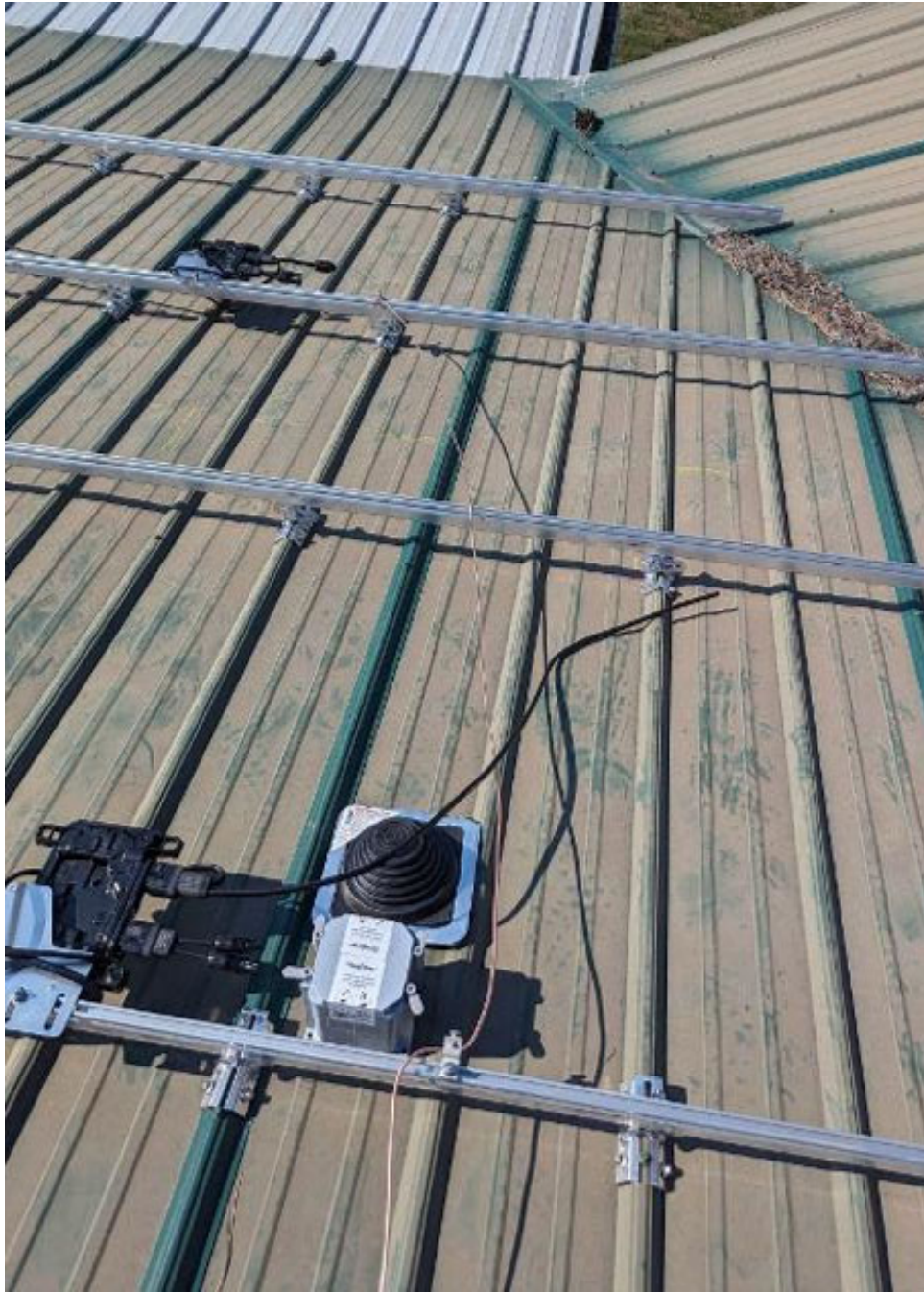


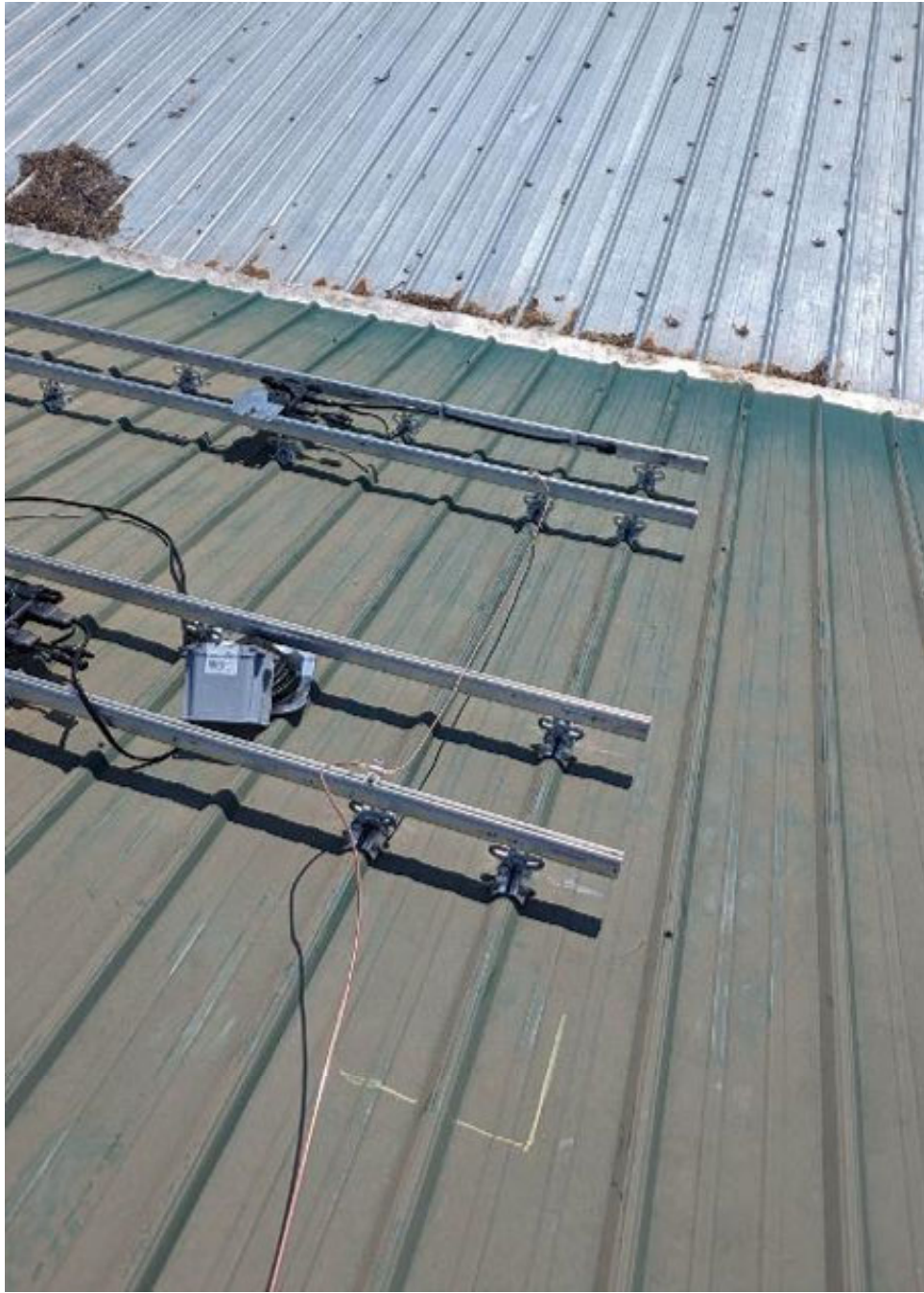


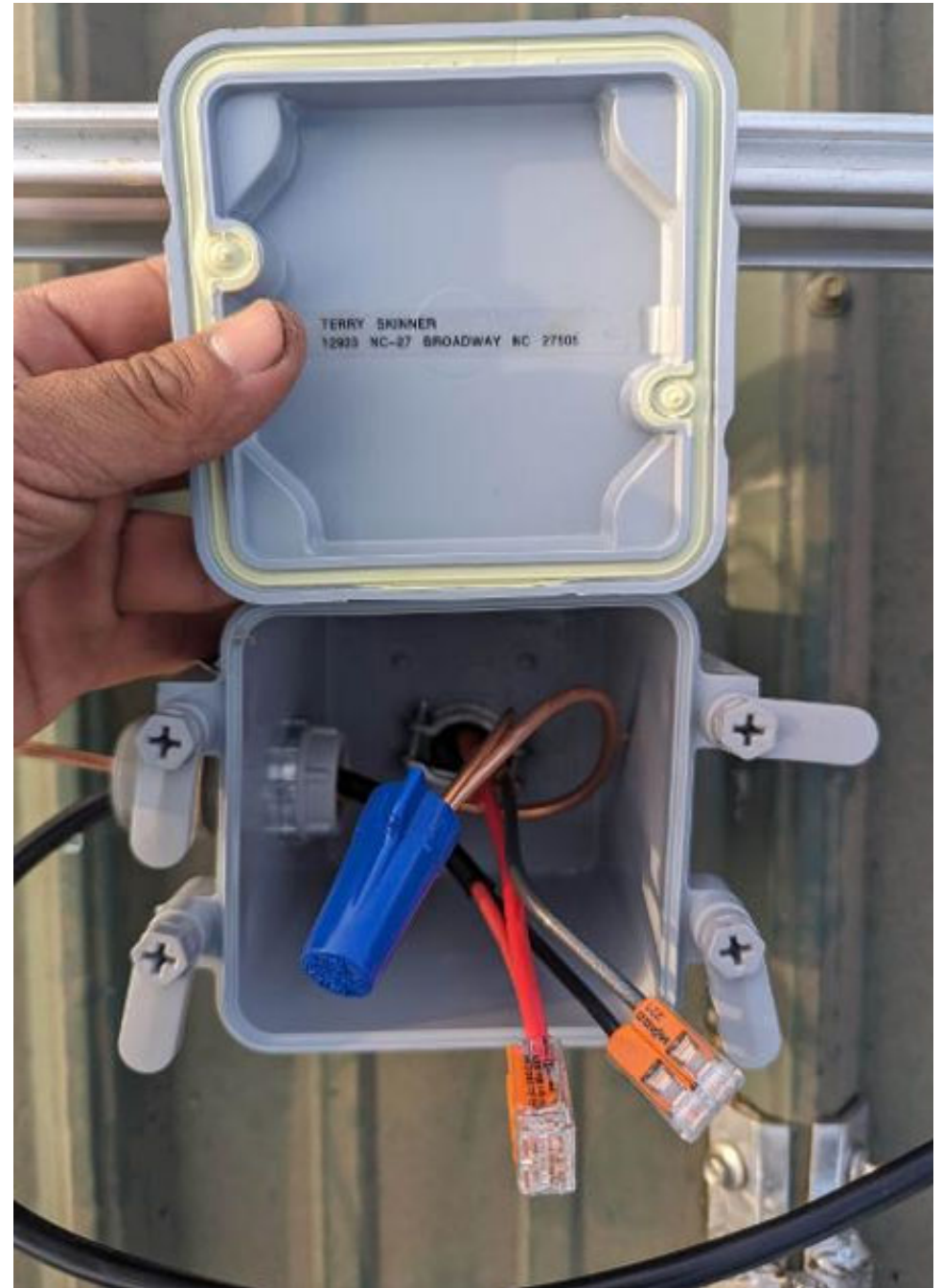
















REC REC Alpha Pure-R Series
 REC420AA Pure-R
 Serial Number: FBB-7005391078

Phone: +95 6495 8224
 www.recgroup.com

Power Output (Pmax)	420 W		• Conforms to UL Std. 61260-1-2 CUL Std. 61260-1 CSA Std. C22.2/M217.30-11-2 • UL Fire Rating Type 2*
Watt Class Sorting	0/+10 W		
Power Production Tolerance	+/- 3 %		• IEC 61215:2016 • IEC 61730:2016
Rated Voltage (Vmpp)	50.0 V		
Rated Current (Impp)	8.40 A		• IEC 61215:2016 • IEC 61730:2016
Open Circuit Voltage (Voc) (+/- 3%)	59.4 V		
Short Circuit Current (Isc) (+/- 3%)	8.89 A		
Maximum System Voltage (Vsys)	1000 V		
Maximum Series Fuse (DC) (UL)	25 A	Manufactured: 11.08.2023	
Maximum Series Fuse (DC) (IEC)	25 A		
Design Load	-4666 / -2666 Pa*		
Maximum Test Load	+7000 / -4000 Pa*		

See installation manual for *1 standard wind load test procedure and
 *1 installation requirements to get use a solar PV system for these

For field connections, use min. 4 mm² (12 AWG) UL PV wires insulated for a min. of 90°C
 Made in Singapore by REC SOLAR PTE. LTD.
 28 TUAS SOUTH AVENUE 14, SINGAPORE 637315, SINGAPORE

EU/UK Contact: REC Solar GmbH
 Balenstr. 73a, 81543 Munich, Germany, Tel: +49 (0)89-442-38590
 For other regions see: www.recgroup.com/contact

