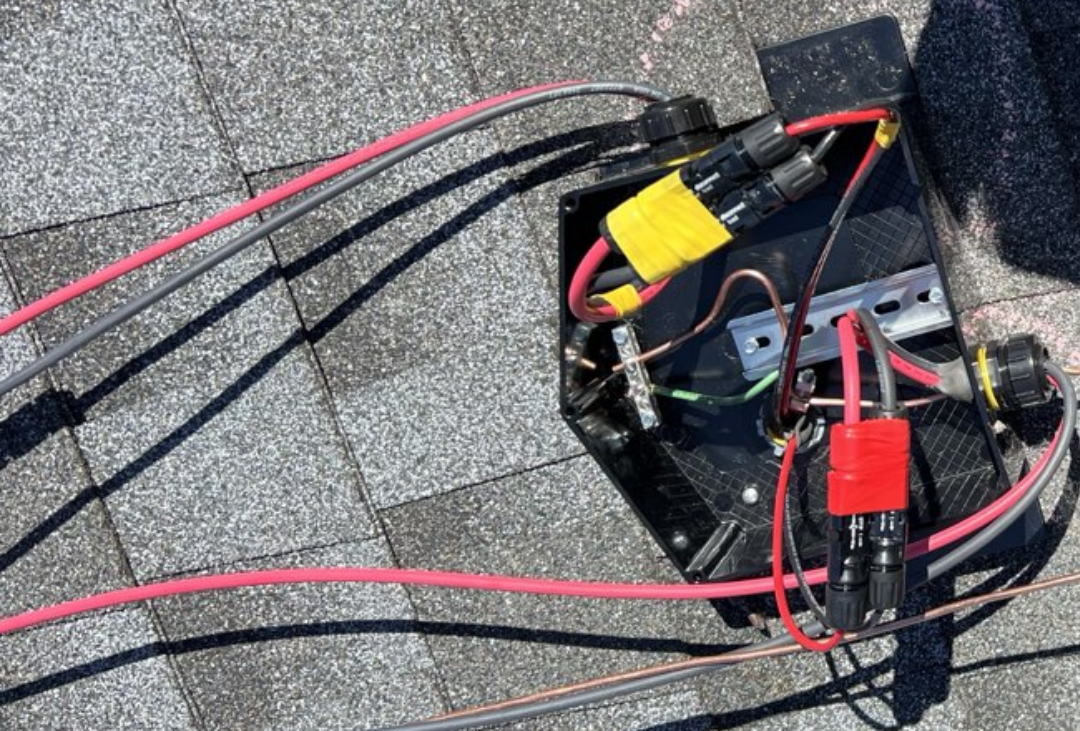






EZZ
SOLAR
1000W
Patent Pending



Deric Alston Dr
221 Kimbroough Dr
Lillington, NC
51-116-12-P
SA-116-11P









PHOTOVOLTAIC POWER SOURCE



PHOTOVOLTAIC POWER SOURCE

CENTAURO LIQUID TIGHT CONDUIT - SUN BE

ELECTRICAL - TYPE EF SIZE







Jinko Solar Jinko Solar Co., Ltd.
 401 Jinko Road, Chengde Economic Development Zone
 Chengde, Hebei 054001, China
 www.jinkosolar.com

Quality Your World's Best

PHOTOVOLTAIC MODULE
 Module assembled in the USA from solar cells made in Vietnam
 Solar Module Type: JKS55M-T0H4-LV

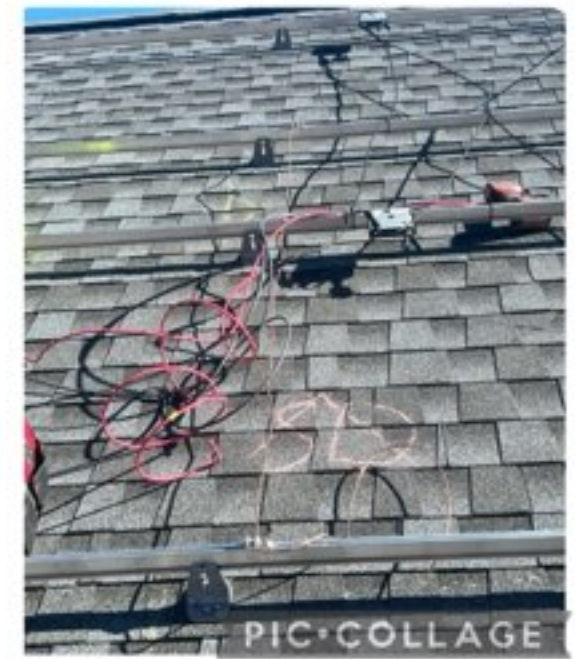
Module Power (P _{max})	330W
Power Tolerance	±5%
Module Open Power Voltage (V _{oc})	38.0V
Open Circuit Current (I _{sc})	8.66A
Short Circuit Current (I _{sc})	48.0V/8.66A
Module Max Power Voltage (V _{mp})	32.54V
Module Max Power Current (I _{mp})	10.14A
Maximum System Voltage	1000VDC
Operating Temperature Range	-40°C ~ +85°C
Operating Temperature Coefficient	-0.45%/°C
Weight	19.5kg/43.0lb
Dimensions (L x W x H)	2282mm x 1133mm x 30mm
Dimensions (in x in x in)	90.2in x 44.6in x 1.2in
Carrier Spacing	40mm

UL US LISTED
CE

Warning: See the Safety, Use Instructions and Technical Specifications for Installation. Refer to the Safety & Use Manual for the Carrier Spacing and the Class Rating with this Product.

WARNING
 1. Do not touch electrical wires, metal or junction boxes directly or indirectly.
 2. Do not touch electrical wires, metal or junction boxes directly or indirectly.
 3. Do not touch electrical wires, metal or junction boxes directly or indirectly.
 4. Do not touch electrical wires, metal or junction boxes directly or indirectly.

AVERTISSEMENT
 1. Ne touchez pas les fils électriques, les métaux ou les boîtes de jonction directement ou indirectement.
 2. Ne touchez pas les fils électriques, les métaux ou les boîtes de jonction directement ou indirectement.
 3. Ne touchez pas les fils électriques, les métaux ou les boîtes de jonction directement ou indirectement.
 4. Ne touchez pas les fils électriques, les métaux ou les boîtes de jonction directement ou indirectement.









Do Not Remove 175ED238-7



SolarEdge Technologies Ltd
SolarEdge Technologies GmbH/
Werner-Ecker-Str. 6/81829
Munich/Germany



SolarEdge Technologies Ltd
Power Optimizer

Solarede Technologies GmbH/
Werner-Ecker-Str. 6/81829
Munich/Germany

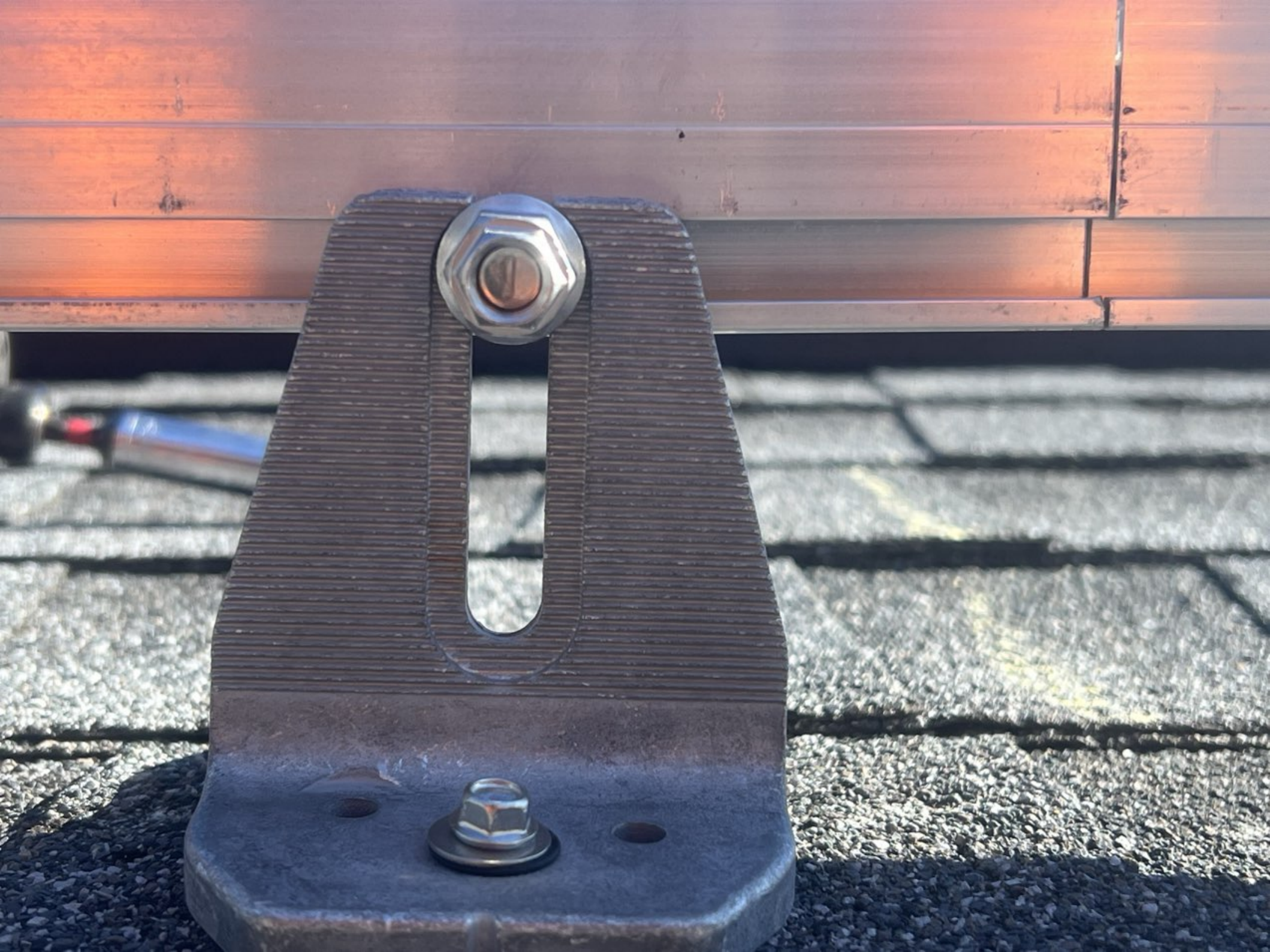
CAUTION
HOT SURFACES-TO REDUCE THE RISK OF BURNS-DO NOT TOUCH SURFACES OF PHOTOVOLTAIC ARRAY IS EXPOSED TO LIGHT, IT SUPPLIES A DC VOLTAGE TO EQUIPMENT. COVER PV MODULES WITH OPAQUE MATERIAL BEFORE DISCONNECTING OR DISCONNECTING THIS OPTIMIZER. DURING FAULT, ZERO CURRENT IS SOURCED INTO DC ARRAY BY CONVERTER.

WARNING ELECTRIC SHOCK HAZARD. THE DC CONDUCTORS OF THIS PHOTOVOLTAIC SYSTEM ARE UNGROUNDING AND MAY BE ENERGIZED.

AVERTISSEMENT

RISQUE DE CHOC ELECTRIQUE- QUAND LE CHAMP PHOTOVOLTAIQUE EST EXPOSE A LA LUMIERE, UNE TENSION CC EST FOURNIE A CET EQUIPEMENT. SURFACES CHAUDES: NE PAS TOUCHER. AFIN DE REDUIRE LES RISQUES DE BRULURES LE COURANT DE RETOUR INJECTE PAR LE CONVERTISSEUR EN CAS DE DEFAILLANCE DANS LE MODULE PV EST TOUJOURS NUL.

Do not disconnect under load





Do Not Remove



CAUTION
HOT SURFACES TO REDUCE THE RISK OF BURNS DO NOT TOUCH. RISK OF ELECTRIC SHOCK WHEN THE PHOTOVOLTAIC ARRAY IS EXPOSED TO LIGHT. IT SUPPLIES A DC VOLTAGE TO EQUIPMENT. COVER PV MODULE WITH OPAQUE MATERIAL BEFORE CONNECTING OR DISCONNECTING THIS OPTIMIZER DURING FAULT. ZERO CURRENT IS SOURCED INTO DC ARRAY BY CONVERTER.

WARNING ELECTRIC SHOCK HAZARD. THE DC CONDUCTORS OF THIS PHOTOVOLTAIC SYSTEM ARE UNGROUNDING AND MAY BE ENERGIZED.

AVERTISSEMENT
RISQUE DE CHOC ELECTRIQUE. QUAND LE CHAMP PHOTOVOLTAIQUE EST EXPOSE A LA LUMIERE, UNE TENSION CC EST FOURNIE A CET EQUIPEMENT. SURFACES CHAUDES. NE PAS TOUCHER. AINSI DE REVENIR ANS CE PAS LE CONVERTISSEUR EN CAS DE DEFAILLANCE DANS LE MODULE PV EST TOUJOURS NUL.

solarEdge SE7600H-US
Grid Support Utility Interactive
Non-Isolated Photovoltaic Inverter

Operating Voltage Range 270-480Vac
Max Input Current 20Aac
Max Continuous Output Power 7600Wac
Voltage Min-Nom-Max 211-240-264Vac
Max Continuous Output Current 32Aac
Max Output Fault Current 72Aac
Max Utility Backfeed Current 0Aac
Frequency Min-Nom-Max 59.3-60.0-60.5Hz
Output Power Factor +/-0.95-1
Max Ambient Temperature 60 C
Enclosure IP66 / Type 2R
With integrated ground fault protection per NEC 990.35 (C)
Type 1 Photovoltaic Arc-Fault Circuit Protection

WI-Fi Password: r4ZXx2TY
Activation:PHCP sDZK bbiv CNJO fZDI u2IU g80=
WiFi MAC: 84-D6:C6:63:2C:DF
ZigBee MAC:



PN: SE7600H - USSNBBL14
SN: SM3123 - 0741471A9 - A2

solarEdge



**PHOTOVOLTAIC RAPID
SHUTDOWN SYSTEM**

solarEdge

741471A9-A2



ETL LISTED CONFORMS TO ANSI/UL 1741 CERTIFIED TO CAN/CSA C22.2 NO. 107
Contains FCC ID: JAGPT-P1NK, IC: 20916-P1K. The enclosed device complies with Part 15 of the FCC Rules. Operation is subject to the following two conditions: (1) this device may not cause harmful interference and (2) this device must accept any interference received, including interference that may cause undesired operation.
PATENT MARKING NOTICE: SEE www.solarEdge.com/groups/patent Made in Mexico

solar edge

StorEdge Connection Unit

Max DC Voltage (PV/Battery)
Max DC Current (PV)
Max Continuous DC Current (Battery)
Max AC Voltage
AC-Single Phase Frequency
Max AC Current (Grid)

480 Vdc
51 Adc
31 Adc
264 Vac
50/60 Hz
40 Aac

For more details refer to the installation guide
Patent marketing notice: see WWW.SOLAREEDGE.COM/patent

PN: **DCD-1PH-US-P3H-F-1**
SM3123-19150AD03-91
SN: **SM3123-19150AD03-91**

Made in Mexico



solar edge

StorEdge Connection Unit

Max AC Current (Smart EV Charger)
Max Continuous Output Power (Smart EV Charger)

40Aac
9600W
-40°C..60°C
IP65/ Type 4X

Ambient Temperature:
Enclosure Rating:

For more details refer to the installation guide
Patent marketing notice: see WWW.SOLAREEDGE.COM/patent

Use 90°C copper PV wires only.
Revenue Grade ANSI C12.20
PHOTOVOLTAIC RAPID SHUTDOWN SYSTEM

PN: **DCD-1PH-US-P3H-F-1**
SM3123-19150AD03-91
SN: **SM3123-19150AD03-91**

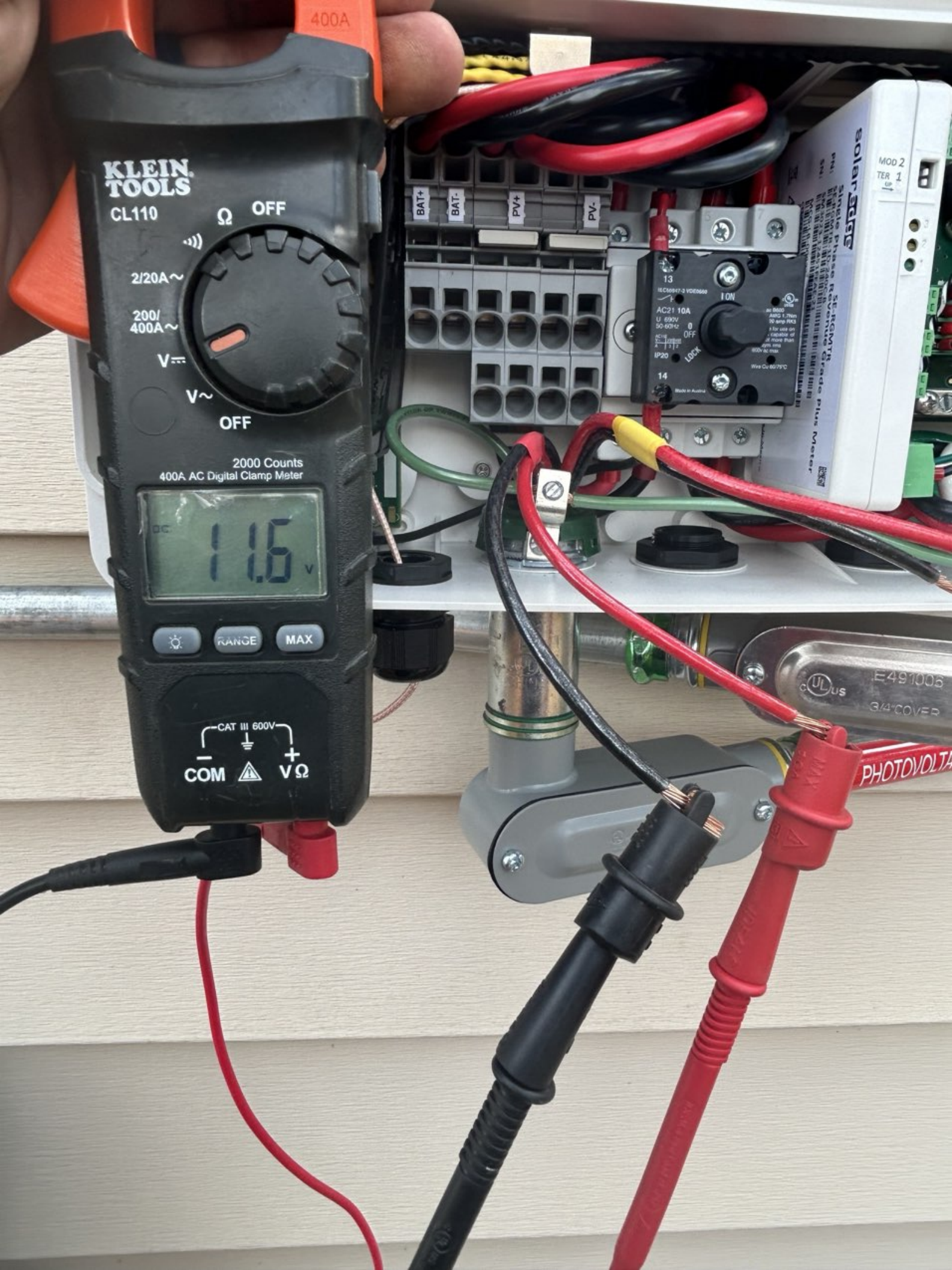
Made in Mexico



solar**edge**

HD wave





KLEIN TOOLS

CL110

Ω OFF
2/20A~
200/400A~
V=DC
V~AC
OFF

2000 Counts
400A AC Digital Clamp Meter

DC
1.15 V

⚙ RANGE MAX

CAT III 600V
COM ⚠ VΩ

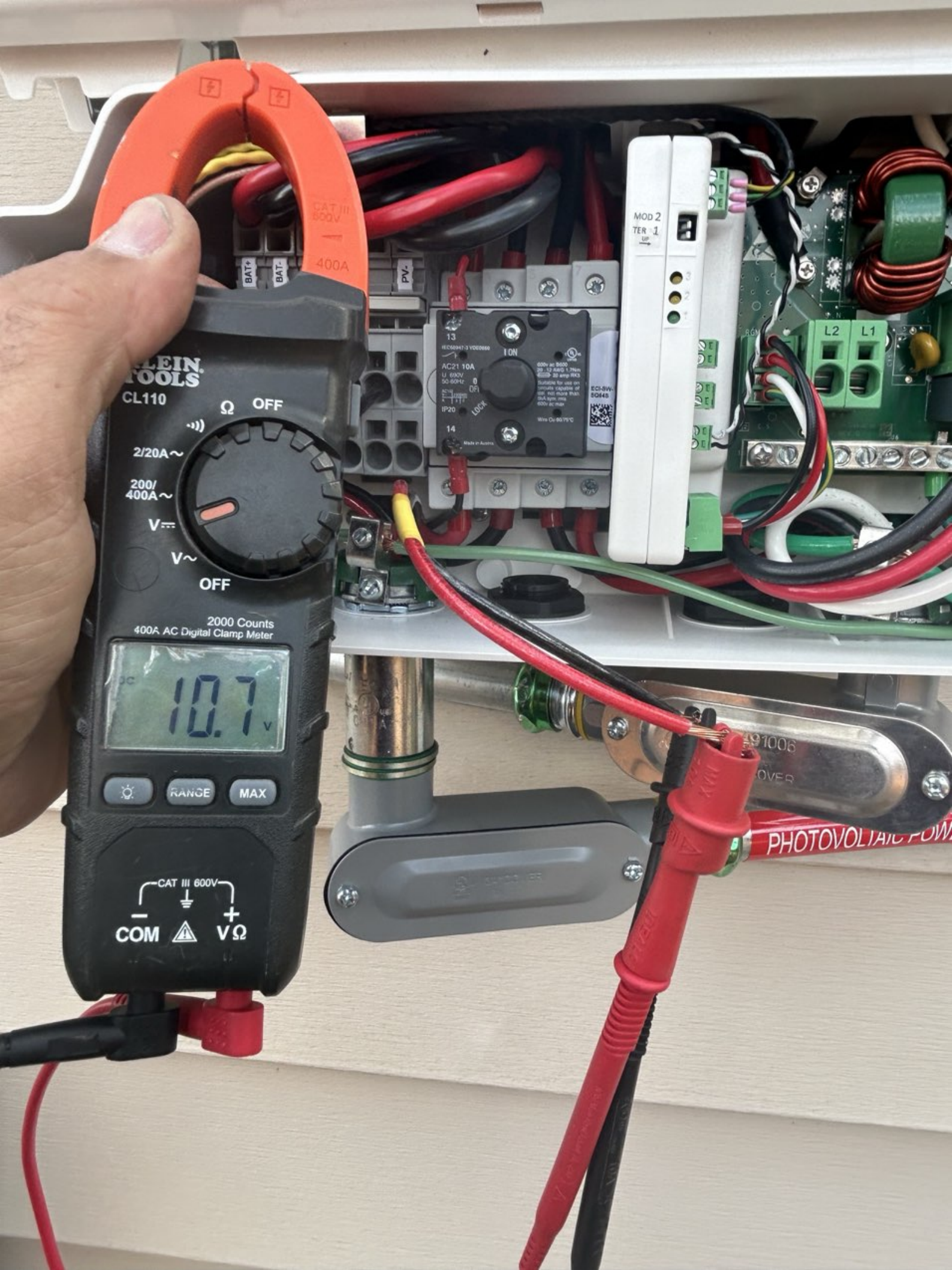
BAT+ BAT- PV+ PV-

13
14
AC21-10A
U: 600V
50-60Hz
IP20
I ON
OFF
LOCK
W: 600V AC max.
W: Cu 60/75°C

solar edge
Solar Charge Controller
MOD 2
TER 1

ULus E491006
3/4 COVER

PHOTOVOLTA



KLEIN TOOLS

CL110

2/20A~

200/400A~

V=

V~

OFF

2000 Counts
400A AC Digital Clamp Meter

10.7 V

ⓘ

RANGE

MAX

CAT III 600V
COM VΩ

CAT III
600V
400A

BAT+

BAT-

PV-

13
AC21 10A
U: 690V
50-60Hz
IP20
1ON
14

MOD 2

TER 1

L2 L1

91006

OVER

PHOTOVOLTAIC POWER

solar**edge**

 **HD** wave

DC DISCONNECT

ON

OFF

solar**edge**

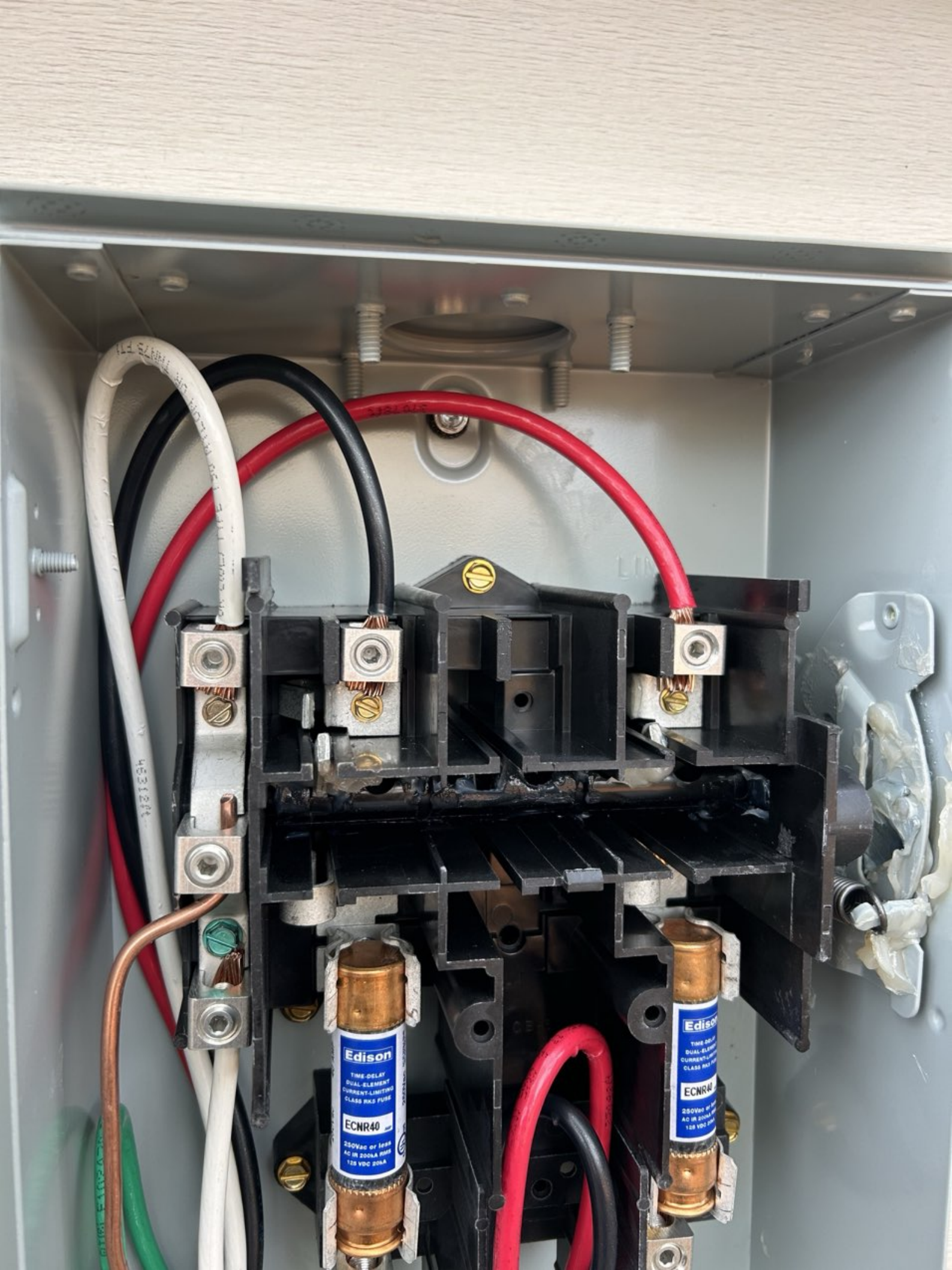
E491006
3/4 COVER

PHOTOVOLTAIC POWER SOURCE



100V/250V
1E-11D
3/16" CHINA
3/16" COVER





⚠ DANGER
 Beware of live parts. Will cause electric shock.

⚠ PELIGRO
 Cuidado con las partes vivas. Podría ocasionar electrocución.

⚠ DANGER
 Beware of live parts. Will cause electric shock.

⚠ PELIGRO
 Cuidado con las partes vivas. Podría ocasionar electrocución.

⚠ DANGER
 Beware of live parts. Will cause electric shock.

⚠ PELIGRO
 Cuidado con las partes vivas. Podría ocasionar electrocución.

DG222NRB
 Terminal Block
 Type 20 Terminal Block
 60 Ampere, 250VAC, 50/60 Hz, 1.27 (1/2) in. Body W x H, 21.64 (1 1/2) in. H

F.T.N.

TERMINALS SUITABLE FOR AL-CU WIRE
 TERMINALES ADECUADAS PARA CONDUCTORES DE AL-CU

BORNES CONVIENTOS PARA CONDUCTORES AL-CU

Wire Size (AWG)	Wire Size (mm ²)	Terminal Size (mm)	Terminal Size (in)
14	2.0	1.5	0.06
12	3.3	2.0	0.08
10	5.3	2.5	0.10
8	8.0	3.0	0.12
6	13.3	4.0	0.16
4	21.0	5.0	0.20
3	37.0	6.0	0.24
2	53.0	7.0	0.28
1	83.0	8.0	0.32

Inspected by
 IE 12 2023
 88033

LINE

SNAP-IN 1ST

SNAP-IN 2ND

REINSTALL AFTER WIRING
REINSTALE DESPUÉS DEL CABLEADO
REINSTALLER APRÈS D'INSTALLATION ÉLECTRIQUE
INSTALL 1ST



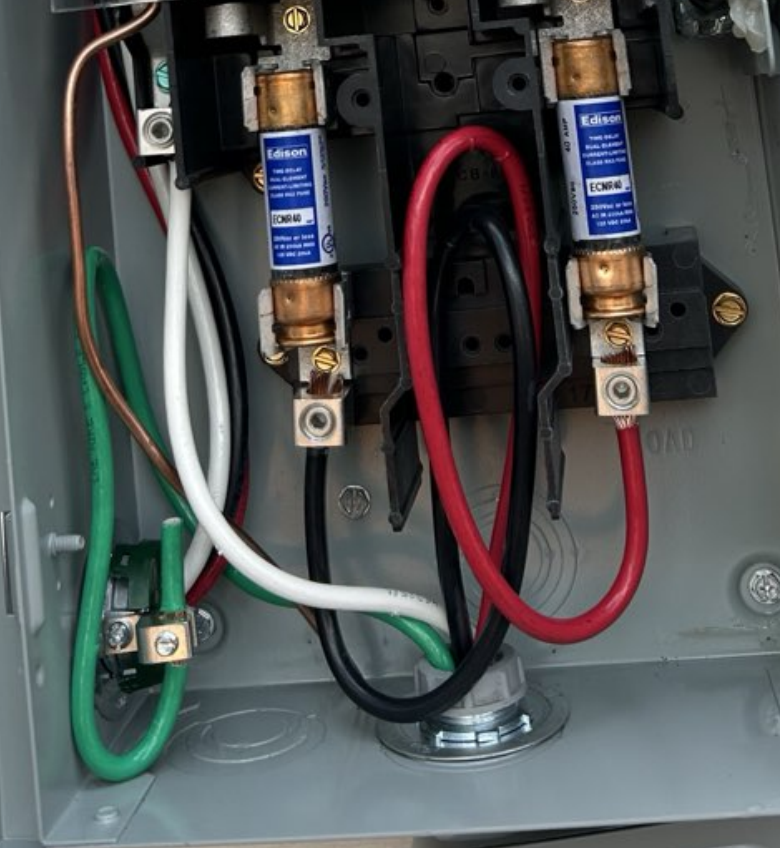
PELIGRO
WARNING
DANGER

EATON
CUT WIRE
PARA CONDUCTORES DE AL-CU
CONDUCTEURS AL-CU

Table with 4 columns: Amps, Volts, Watts, and Amps. Includes safety instructions in Spanish and English.

Amps	Volts	Watts	Amps
15	120	1800	15
20	120	2400	20
25	120	3000	25
30	120	3600	30
35	120	4200	35
40	120	4800	40
45	120	5400	45
50	120	6000	50
60	120	7200	60
70	120	8400	70
80	120	9600	80
90	120	10800	90
100	120	12000	100

LINE
SNAP-IN 2ND
REINSTALL AFTER WIRING
REINSTATE DESPUÉS DEL CABLEADO
REINSTALLER APRÈS L'INSTALLATION ÉLECTRIQUE
INSTALLER



Inspected by
E1118
88003



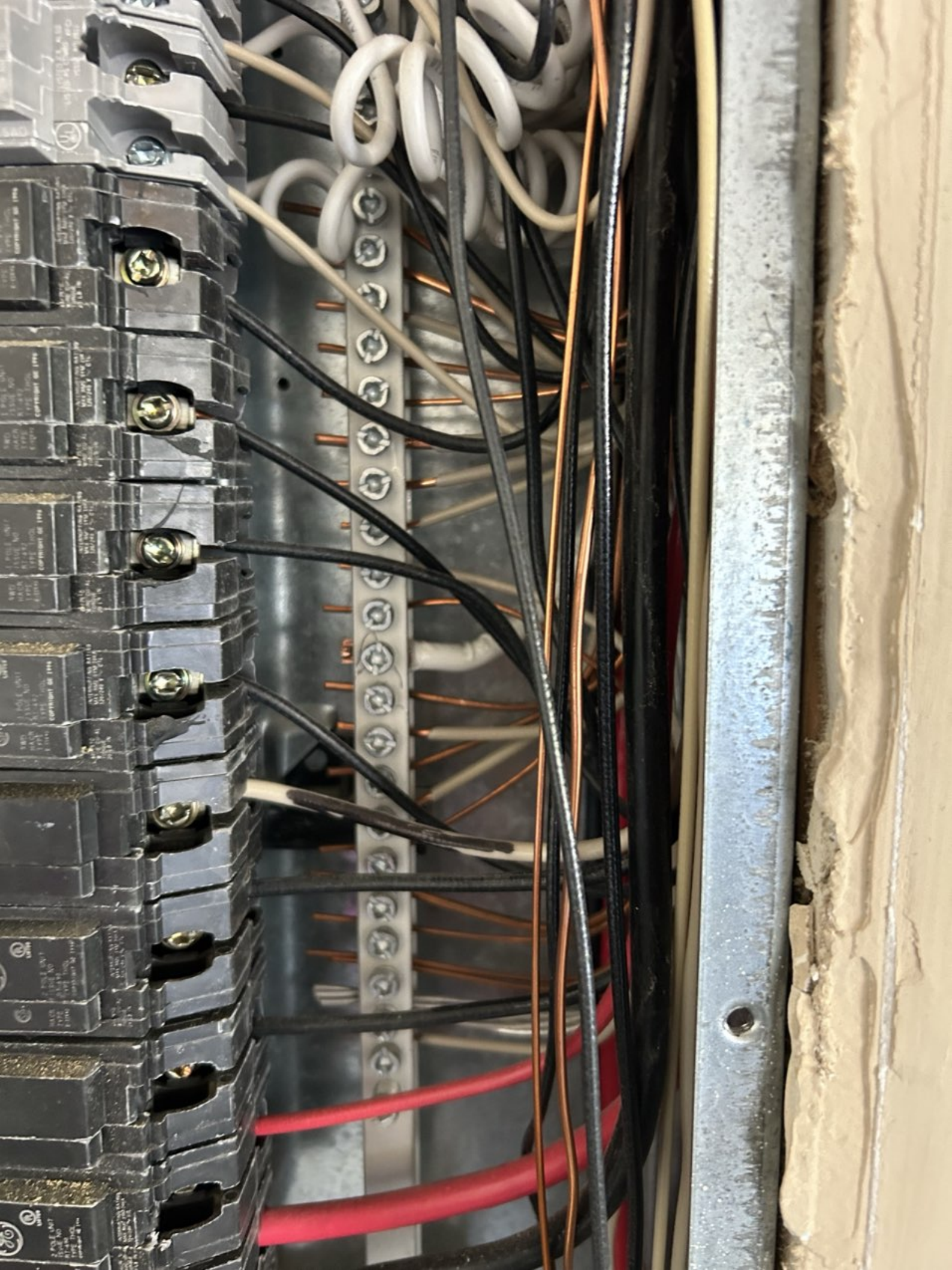




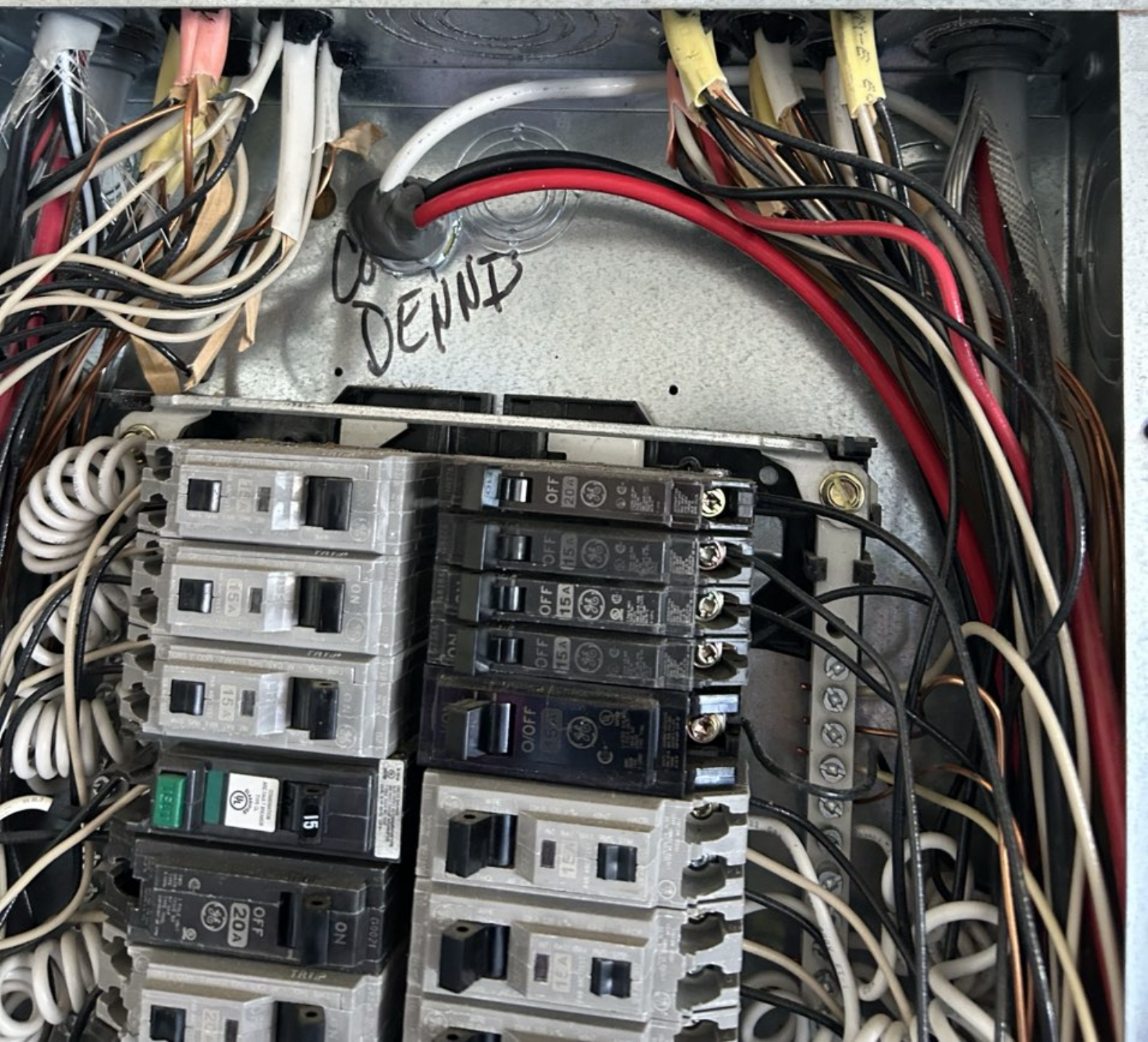


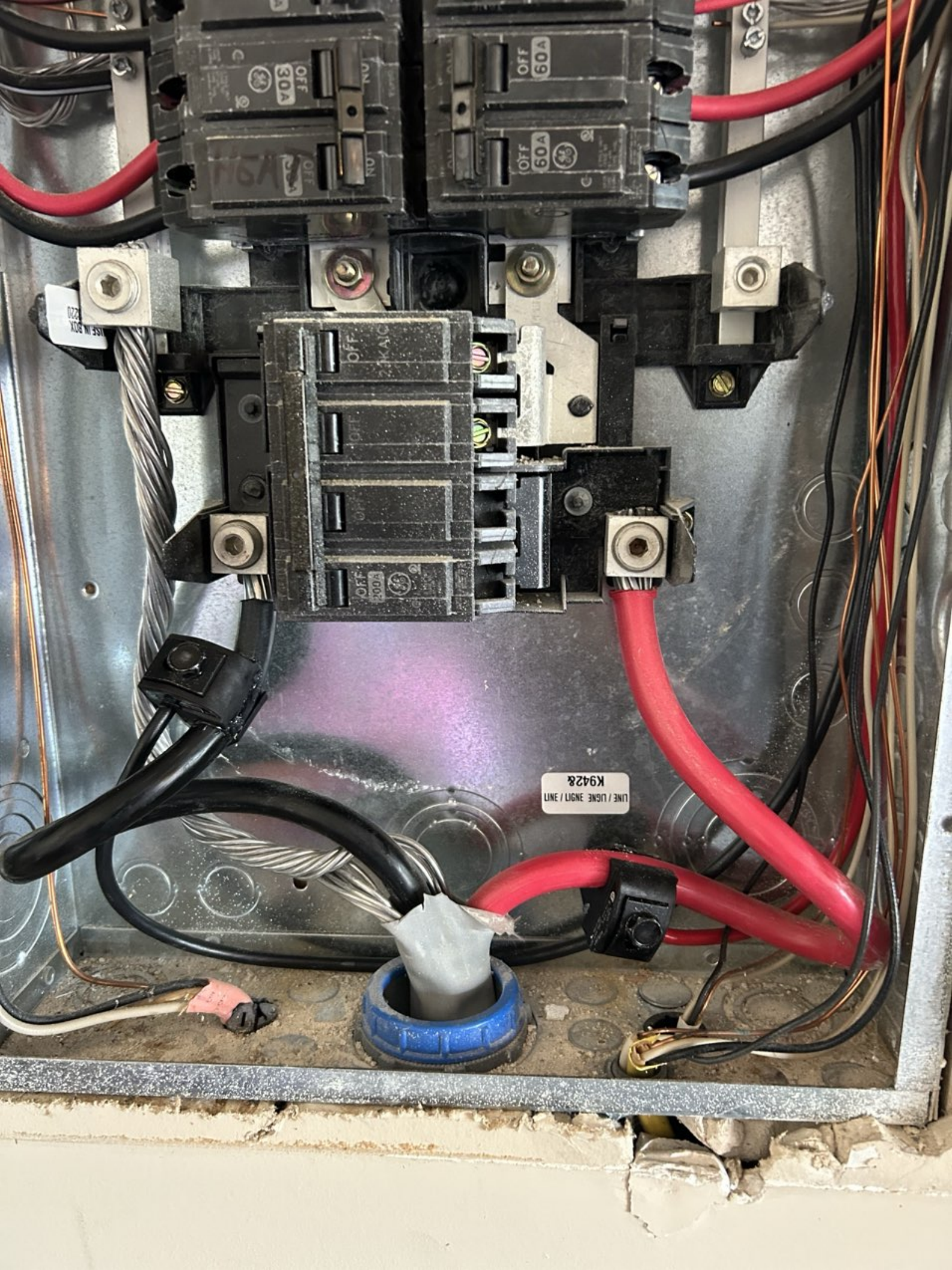
UN
1 2 3 4 5 6 7 8 9 10 11 12 13 14 15 16 17 18 19 20 21 22 23 24 25 26 27 28 29 30 31 32 33 34 35 36 37 38 39 40 41 42 43 44 45 46 47 48 49 50 51 52 53 54 55 56 57 58 59 60 61 62 63 64 65 66 67 68 69 70 71 72 73 74 75 76 77 78 79 80 81 82 83





CO
DENNIS



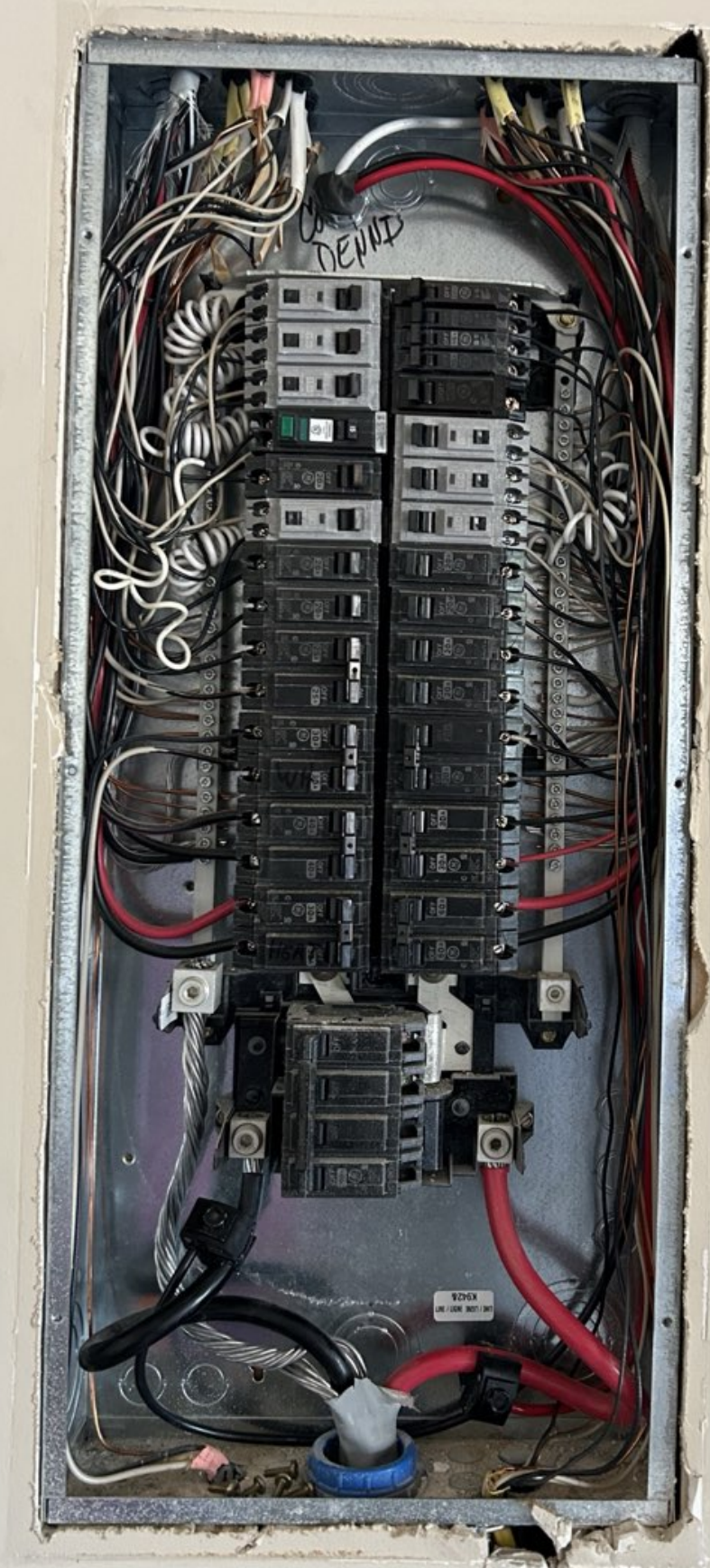


K9428
LINE / LIGNE ENLIT / ENLT

OFF 300A
OFF 300A
OFF 300A
OFF 300A

OFF 60A
OFF 60A

OFF 30A
OFF 30A



DEWID

920X
LW / 1000 / 1001 / 1002



KLEIN TOOLS
CL110

2/28A ~
200/
400A ~
V ~
V ~
OFF

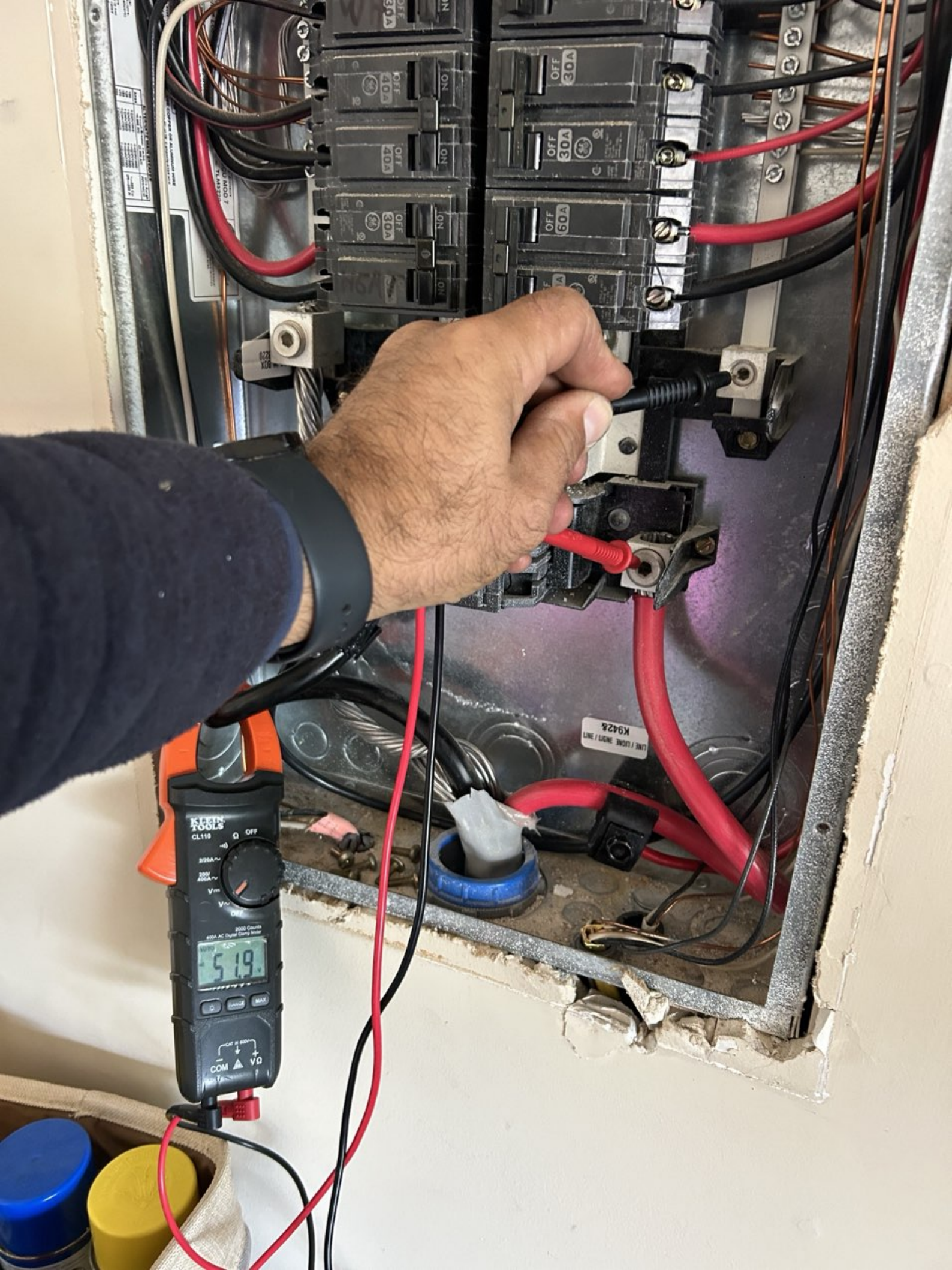
2000 Counts
400A AC Digital Clamp Meter

OFF

COM

VΩ

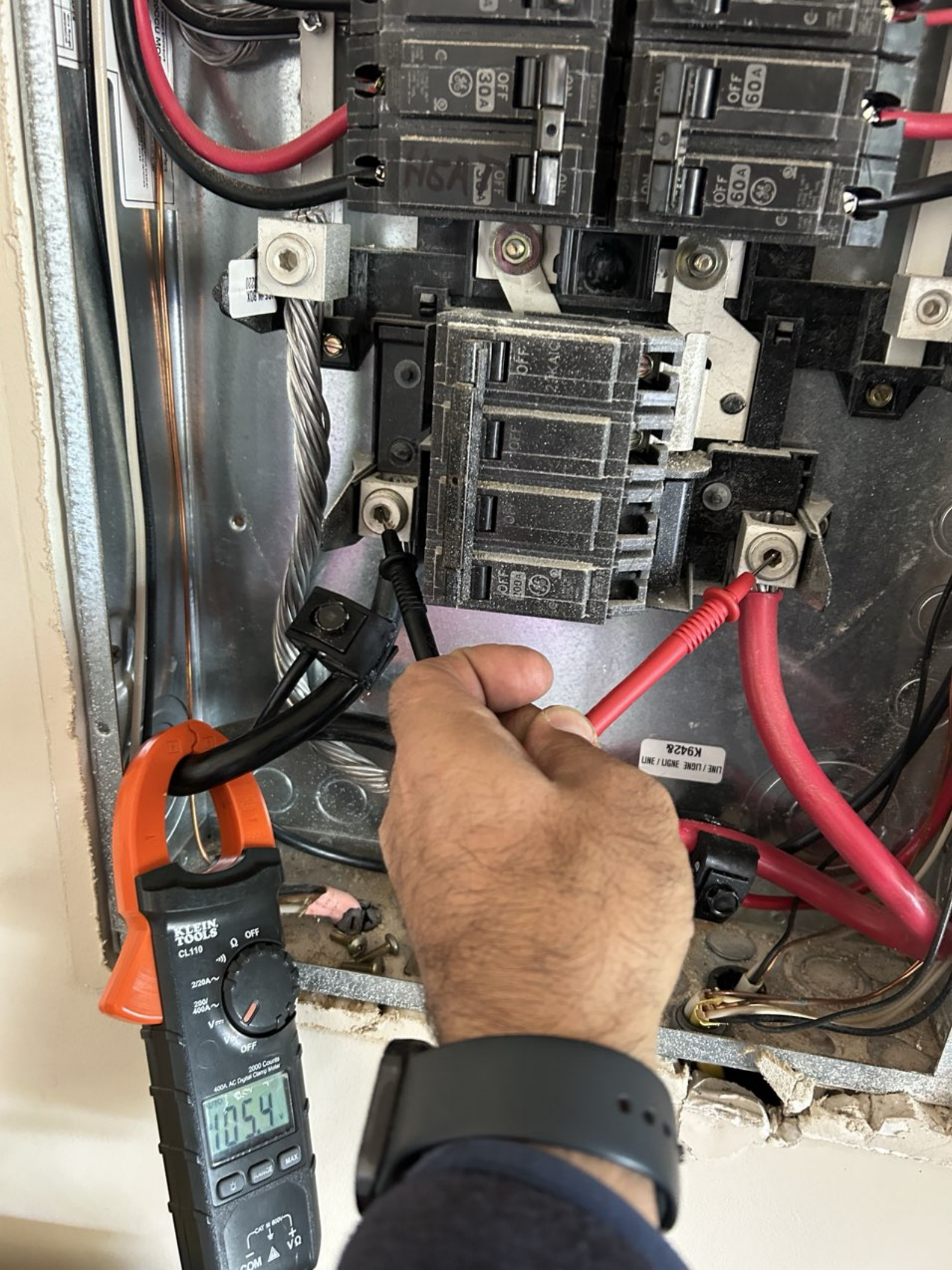
K9428
LINE / LGNE ENGT / ANTI



100% CUMULATIVE TESTS
100% CUMULATIVE TESTS
100% CUMULATIVE TESTS

K9428
LINE / LINE 2ND / 3RD

KLEIN TOOLS
CL119
OFF
300A ~
200V 400A ~
V ~
2000 Counts
400A AC Digital Clamp Meter
5.19
COM Δ VΩ
OFF 200V



KLEIN TOOLS
CL110

OFF
2/20A ~
200V
400A ~
V_{AC}
OFF

2000 Counts
400A AC Digital Clamp Meter

105.4

COM
VΩ
MAX

K9428
LINE / LINE ENGL / INT

OFF
30A

OFF
50A

OFF
50A

OFF
100A

**CAUTION: SOLAR ELECTRIC
SYSTEM CONNECTED**



CAUTION:
MULTIPLE SOURCES OF POWER
THE PV DISCONNECT IS LOCATED
BESIDE THE SERVICE METER

WARNING
DUAL POWER SUPPLY
SOURCES: UTILITY GRID
AND PV SOLAR
ELECTRIC SYSTEM

CAUTION
SOLAR POINT OF CONNECTION



EATON SOLAR PV SYSTEM EQUIPPED WITH RAPID SHUTDOWN

TURN RAPID SHUTDOWN SWITCH TO THE OFF POSITION TO SHUT DOWN PV SYSTEM AND PREVENT BACKFLOW IN THE ARRAY

RAPID SHUTDOWN SWITCH FOR SOLAR PV SYSTEM

CAUTION: MULTIPLE SOURCES OF POWER TO SERVED EQUIPMENT TO SOURCE MUST BE OPENED BY THE USER

WARNING: ELECTRIC SHOCK HAZARD. TERMINALS ON THE LINE AND LOAD SHOULD NOT BE ENERGIZED IN THE OPEN POSITION

AC DISCONNECT PHOTOVOLTAIC SYSTEM POWER SOURCE

INPUT AC	OFF
OUTPUT CURRENT	OFF
INVERTER OPERATING	OFF
AC SOURCE	OFF

DC DISCONNECT

SCIENTIFIC EQUIPMENT

CAUTION: SOLAR ELECTRIC SYSTEM CONNECTED

PHOTOVOLTAIC SYSTEM kWh-METER

WARNING: SOLAR POWER SYSTEM. MULTIPLE SOURCES OF POWER TO SERVED EQUIPMENT TO SOURCE MUST BE OPENED BY THE USER

Grey electrical junction box with multiple wires connected to it.





EATON

**SOLAR PV SYSTEM
EQUIPPED WITH
RAPID SHUTDOWN**



TURN RAPID SHUTDOWN SWITCH TO THE "OFF" POSITION TO SHUT DOWN PV SYSTEM AND REDUCE SHOCK HAZARD IN THE ARRAY

**RAPID SHUTDOWN
SWITCH FOR
SOLAR PV SYSTEM**

CAUTION:
MULTIPLE SOURCES OF POWER
THE SERVICE DISCONNECT IS LOCATED
INSIDE OPPOSITE THE UTILITY METER

WARNING
ELECTRIC SHOCK HAZARD
TERMINALS ON THE LINE AND
LOAD SIDES MAY BE ENERGIZED
IN THE OPEN POSITION

AC DISCONNECT
PHOTOVOLTAIC SYSTEM
POWER SOURCE

RATED AC OUTPUT CURRENT	32	AMPS
NOMINAL OPERATING AC VOLTAGE	240	VOLTS

ON

OFF





E.T.N SOLAR PV SYSTEM EQUIPPED WITH RAPID SHUTDOWN

CAUTION SOLAR ELECTRIC SYSTEM CONNECTED

WARNING

AC DISCONNECT

PHOTOVOLTAIC SYSTEM METER



CAUTION SOLAR ELECTRIC SYSTEM CONNECTED

PHOTOVOLTAIC SYSTEM METER



Grey electrical junction box with wires connected to it.



Grey electrical junction box with wires connected to it.



DANGER / PELIGRO
HAZARD OF ELECTRICAL SHOCK OR BURN
SERVICE BY UTILITY AUTHORIZED PERSONNEL ONLY
DO NOT PAINT OVER OR REMOVE THIS LABEL
PELIGRO DE DESCARGA ELECTRICA O QUEMADURA
SOLAMENTE PERSONAS AUTORIZADAS DE LA COMPAÑIA
ELECTRICA PUEDEN MANTENIRLO
NO PINTES ENCIMA NI REMUEVA ESTA ETIQUETA

**CAUTION: SOLAR ELECTRIC
SYSTEM CONNECTED**

**PHOTOVOLTAIC
SYSTEM kWh METER**

WARNING
DUAL POWER SUPPLY
SOURCES: UTILITY GRID
AND PV SOLAR
ELECTRIC SYSTEM

Y72577-321E UMT-A 16369585

32006

FOCUS kWh
TYPE ALF FORM 2S CL200 240V 3W 60 Hz TA=30 kWh 7.2
SOUTH RIVER EMC
TWACS 16369585

102 857 111
-1011 Landis+Gyr PATENT PENDING

MILBANK
ELECTRIC









ATTN

0175E0CF89-CD

