



solar**edge**

 HD wave

P I O

DC DISCONNECT

ON

OFF



solar**edge**

Grid Monitoring Completed.



Pairing Completed.

**solar**edge

SN 751022FB-A2



Status

Inverter

SN 751022FB-A2

Summary



Power

768 W

Voltage

249 Vac

Frequency

60 Hz

P_OK: 33 of 33

Optimizers Communicating

Server Comm.

S_OK**Cellular**

Status

Production

Power Limit

10 kW

Switch is

On

Cos Phi

Q

Country

[Disconnect from device](#)

solar **EDGE** **SE1000H-US**
 Grid Support Utility Interactive Non-Isolated
 Photovoltaic Inverter With Stand Alone Mode

| | |
|--|-----------------------|
| Operating Voltage Range | 201 - 480 Vdc |
| Max Input Current | 31 Adc |
| Max Continuous Output Power Grid connected | 10000Wac |
| Max Continuous Output Power Stand Alone | 11400Wac |
| Voltage Min - Nom - Max | 211 - 240 - 284 Vdc |
| Max Continuous Output Current Grid connected | 48Aac |
| Max Continuous Output Current Stand Alone | 47.5Aac |
| Max Output Fault Current | 74 Aac |
| Max Utility Backfeed Current | 0 Aac |
| Frequency Min - Nom - Max | 59.2 - 60.0 - 60.5 Hz |
| Output Power Factor | +/- 0.95 - 1 |
| Max Ambient Temperature | 60 C |
| Enclosure | IP65/Nema 4X |
| With integrated ground fault protection per NEC 690.26 (c) Type 1 Photovoltaic Arc-Fault Circuit-Protection | |



ETL Intertek 4004590
 WiFi Password: Na89Pt1
 Activation: xvRD eqly hEB: 3H0 V5U IQBN R0E =
 WiFi MAC: 84 D6 C5 84 00 00
 ZigBee MAC:

PN: SE1000H-USMNB L15
 SN: SM3723-0751022FB-A2



solar **edge**



**PHOTOVOLTAIC RAPID
 SHUTDOWN SYSTEM**

solar **edge** **751022FB-A2**



ETL LISTED
 CONFORMS TO
 ANSI/CES 174J
 CERTIFIED TO
 CAN/CSA
 C22.2 NO 107



Intertek
 4004590



Contains FCC ID: 2AGPT-PLN-X, IC: 20914-PN-X. The enclosed device complies with Part 15 of the FCC Rules. Operation is subject to the following two conditions: (1) This device may not cause harmful interference and (2) This device must accept any interference received, including interference that may cause undesired operation.
 PATENT MARKING NOTICE: SEE www.solar-edge.com/groups/patent Made in Mexico


solaredge

StorEdge Connection Unit

Max DC Voltage (PV/Battery) 480 Vdc
Max DC Current (PV) 62 Adc
Max DC Power (PV) 23.2 kWdc
Max Continuous DC Current (Battery) 31 Adc
Max Continuous DC Power (Battery) 11.6 kWdc
Max AC Voltage 264 Vac
AC-Single Phase Frequency 50/60 Hz
Max AC Current (Grid) 48 Aac
For more details refer to the installation guide
Patent marketing notice: see WWW.SOLAREEDGE.COM/patent

DCD-1PH-US-P2H-F-1

PN: 

SN: 

Made in Mexico




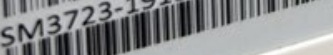
solaredge

StorEdge Connection Unit

Max AC Current (Smart EV Charger) 40 Aac
Max Continuous Output Power (Smart EV Charger) 9600 W
Max Battery Energy Storage 32 kWh
Number of AC phases L1, L2, N
Maximum AC short circuit current 74 Aac
Weight 30.2/13.7 lbs/kg
Ambient Temperature -40°C ..60°C
Enclosure Rating IP65/ Type 4X
For more details refer to the installation guide
Patent marketing notice: see WWW.SOLAREEDGE.COM/patent
Use 90°C copper PV wires only.
Revenue Grade ANSI C12.20
PHOTOVOLTAIC RAPID SHUTDOWN SYSTEM

DCD-1PH-US-P2H-F-1

PN: 

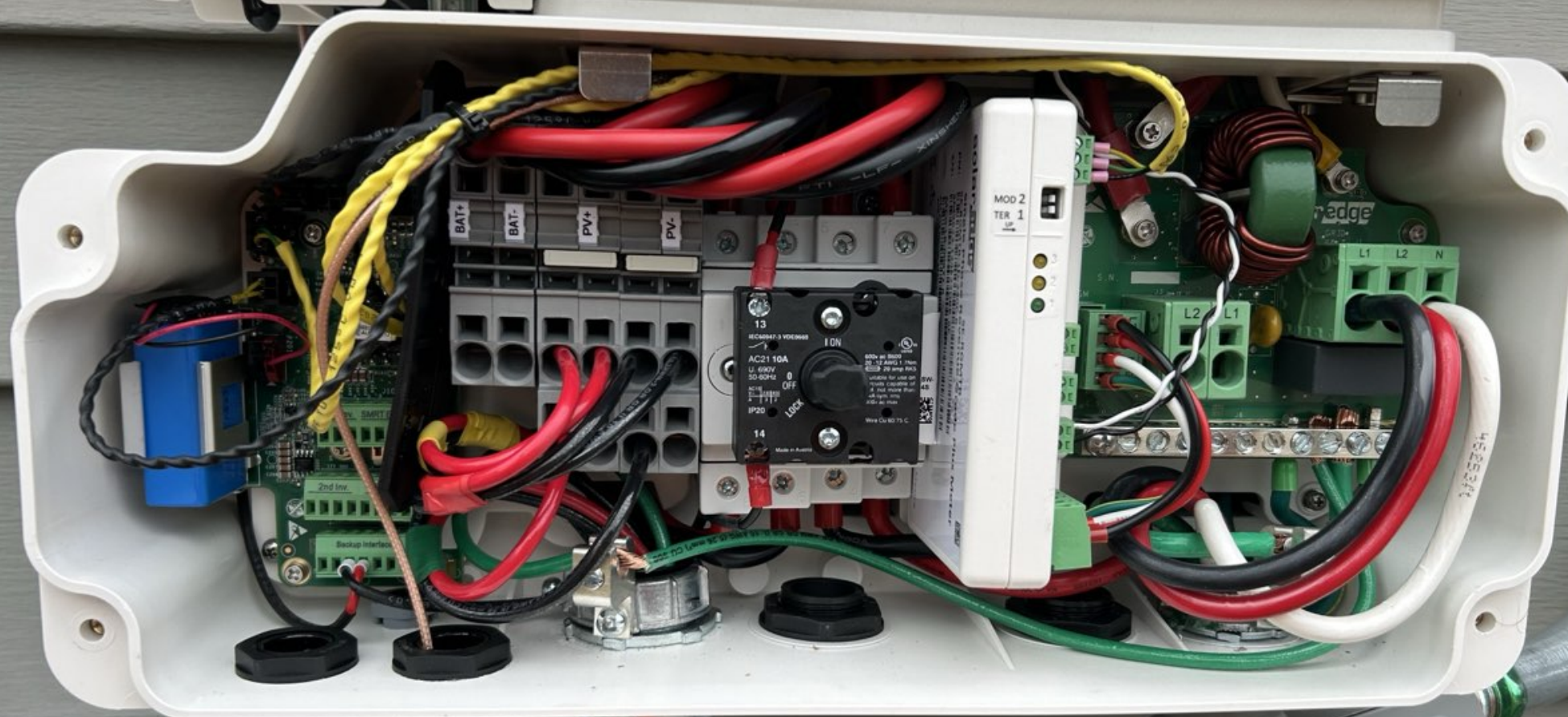
SN: 

Made in Mexico



Solar Edge

HD wave



CAT III
600V

400A

**KLEIN.
TOOLS**

CL110

Ω OFF

)))

2/20A~

200/
400A~

V=

V~

OFF

2000 Counts
400A AC Digital Clamp Meter

AUT
DC
1.04V

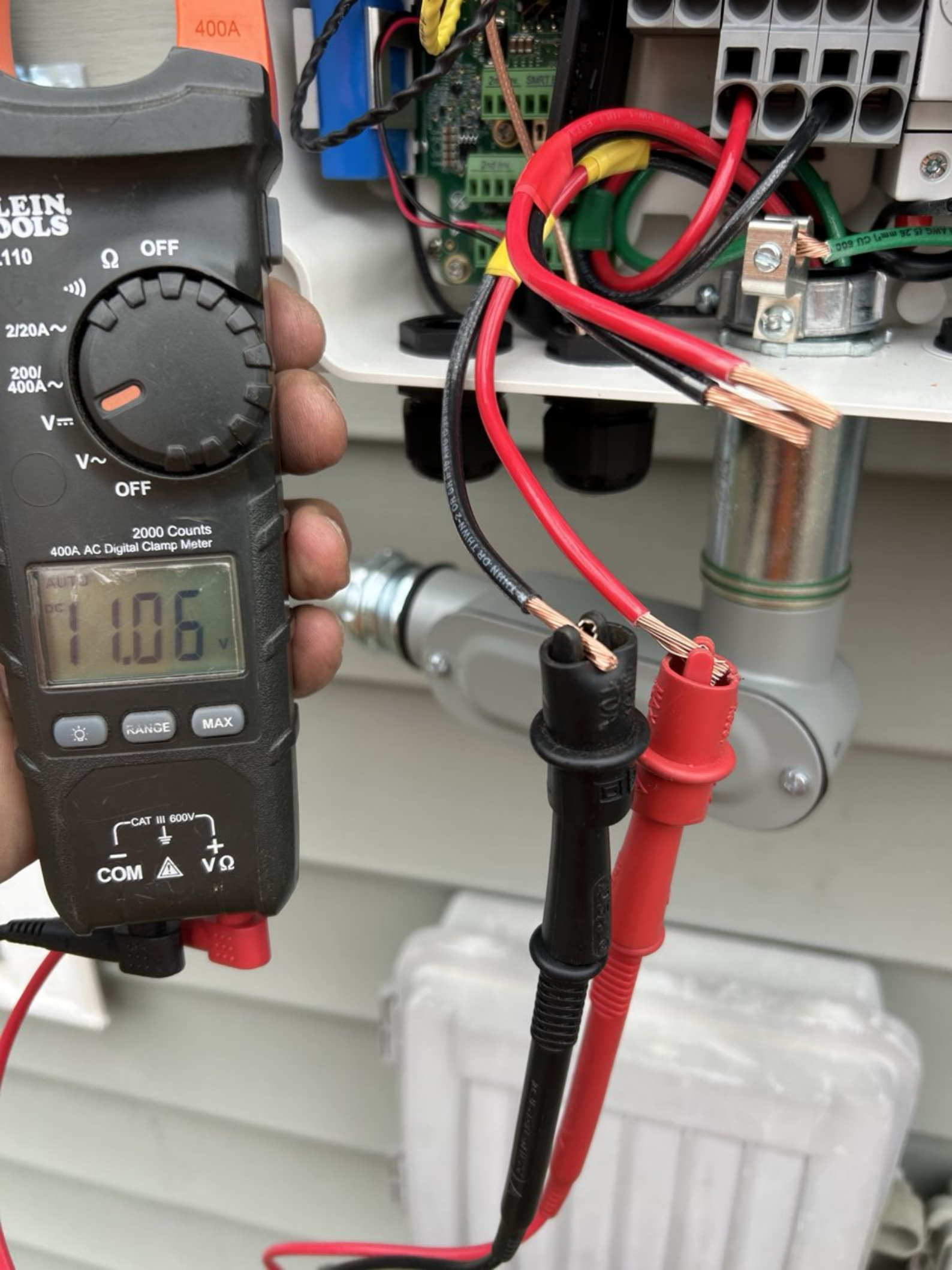
☀

RANGE

MAX

CAT III 600V
COM Δ + V Ω





400A

LEIN.
TOOLS

110

Ω OFF

)))

2/20A~

200/
400A~

V=

V~

OFF

2000 Counts
400A AC Digital Clamp Meter

AUTO
DC
1.06 V

☀

RANGE

MAX

CAT III 600V
COM \triangle + V Ω



POWER SOURCE

CAT III
600V
400A

KLEIN TOOLS

CL110

Ω OFF

2/20A~

200/
400A~

V=

V~

OFF

2000 Counts
400A AC Digital Clamp Meter

AUTO
DC
1.03V

ⓘ

RANGE

MAX

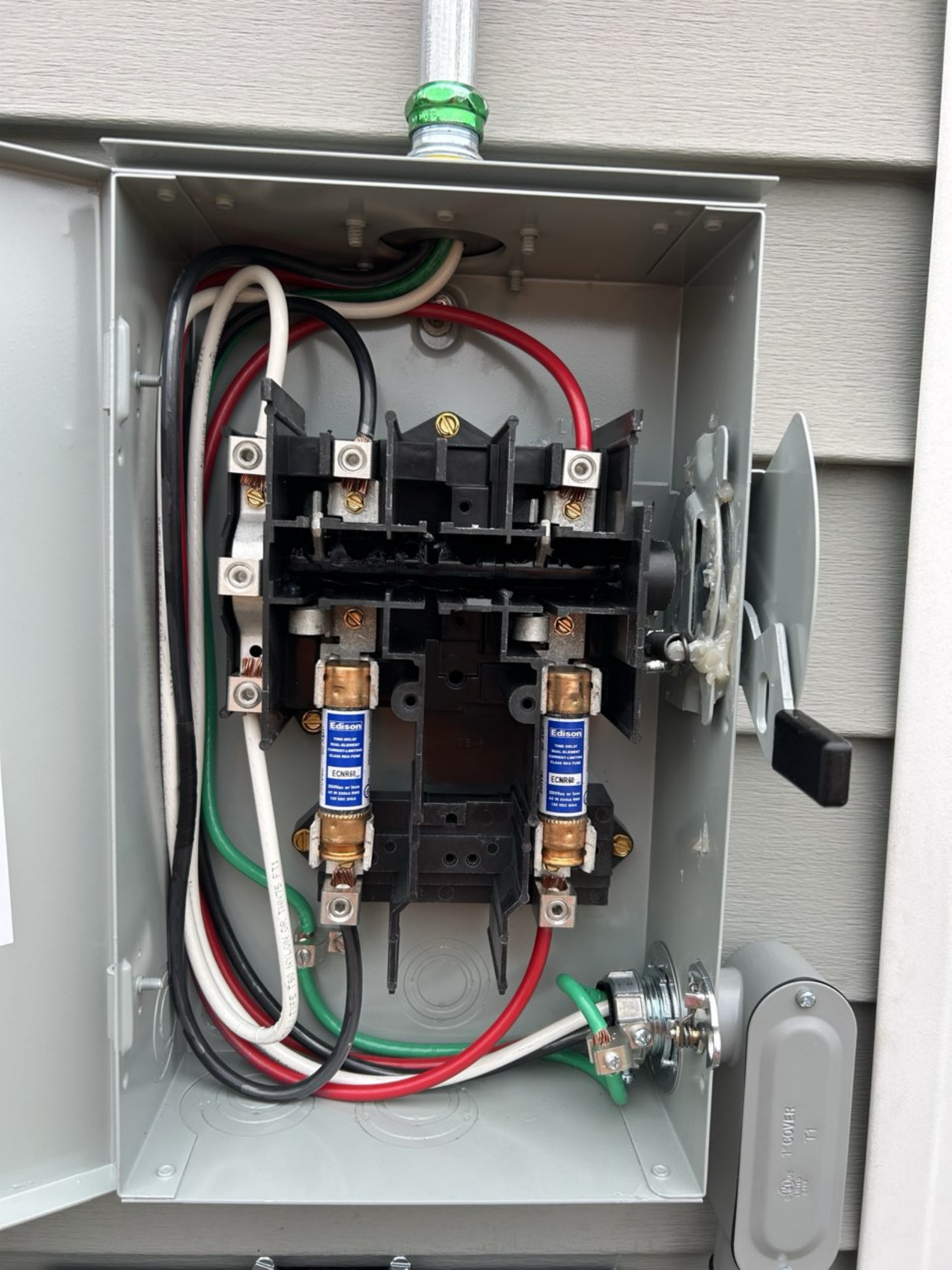
CAT III 600V
- COM \triangle + V Ω

BAT+

BAT+

COVER





PHOTOVOLTAIC POWER SOURCE

F340@ 1
When making technical
inquiries, please refer to
this number & Cat. No.
33-17135

UL US LISTED
ENCLOSED PANELBOARD
ISSUE NO. 0129298
E8741

The main electrical assembly consists of four 60A circuit breakers mounted on a metal rail. Each breaker is labeled with '60' and 'On/I'. To the right of the breakers is a vertical terminal block with multiple screw terminals. A white cable is connected to the top terminal of this block. On the left side, a terminal block with green screws is connected to the breakers. Wires in red, black, and green are routed from the breakers and terminal blocks.

This section shows the internal wiring connections. A white cable enters from the top right, and a red, black, and green cable enters from the bottom right through a cable gland. The wires are connected to a terminal block on the panel. A green wire is also connected to a terminal block on the left side of the panel.

At the bottom of the panel, there is a motor and a terminal block. The motor is labeled '1" COVER' and '7-1'. It is connected to the terminal block, which is part of the main electrical assembly. The motor is mounted on a metal base.

Main

Main

P.V SOLAR

P.V SOLAR



SOLAR PV BREAKER
BREAKER IS BACKFED
DO NOT RELOCATE
prohobby.com 03-2016





EATON

**SOLAR PV SYSTEM
EQUIPPED WITH
RAPID SHUTDOWN**

**TURN RAPID SHUTDOWN SWITCH TO
THE 'OFF' POSITION TO SHUT DOWN
PV SYSTEM AND REDUCE
SHOCK HAZARD IN THE ARRAY**

**RAPID SHUTDOWN
SWITCH FOR
SOLAR PV SYSTEM**

WARNING
ELECTRIC SHOCK HAZARD
TERMINALS ON THE LINE AND
LOAD SIDES MAY BE ENERGIZED
IN THE OPEN POSITION

AC DISCONNECT
PHOTOVOLTAIC SYSTEM
POWER SOURCE
RATED AC
OUTPUT CURRENT **42** AMPS
NOMINAL OPERATING
AC VOLTAGE **240** VOLTS

ON

OFF

MADE IN U.S.A.

USA













SERVICE DISCONNECT

| | | | |
|-------------------------------|----|----|--------------------------------------|
| HEAT | 60 | 60 | HEAT |
| RANGE | 40 | 30 | WATER HEATER |
| DRYER Plug | 30 | 25 | A/C 1 |
| A/C 2 | 25 | 25 | UP STAIRS |
| Dishwasher | 20 | 15 | Dishwasher & Disposal |
| Washer | 20 | 15 | Nook/Din. Rm. Plugs |
| Kitchen GFI | 20 | 15 | Lights UP |
| Microwave | 20 | 15 | Loft |
| Bathroom GFI | 20 | 15 | Great Room |
| Kitchen GFI | 20 | 15 | Small Bedrn Down |
| Garage Door GFI | 15 | 15 | Bedrooms 1+2 |
| outside plugs GFI | 15 | 15 | Master Bedroom |
| Lights in Kit, Din. Rm. Porch | 15 | 15 | Lights UP |
| Pool REC | 15 | 15 | Lights Down |
| Subpanel outside | 15 | 15 | |

Bathroom
GFI

Kitchen
GFI

Garage Door
GFI

outside plugs
GFI

Lights in Kitch
Din. Rm- Pord

Pool
REC

Subpanel

outside



Great
Room

Small Bed
Down

Bedroom
1+2

Master
Bedroom

Lights
UP

Lights
Down



White solar inverter with a black cooling fan and a small antenna on top. It is mounted on the wall with a white conduit pipe above it.

Large grey main electrical panel with a meter on the left side. It has several red warning labels, including "DANGER HIGH VOLTAGE" and "CAUTION".

Grey solar disconnect switch with a red handle. It has a yellow label that reads "SOLAR INVERTER SHUT-OFF SWITCH FOR RAPS SYSTEM" and other safety warnings.

Grey weatherproof outlet box mounted on the wall below the solar inverter.

Small grey weatherproof outlet box mounted on the wall below the main electrical panel.

Grey weatherproof outlet box mounted on the wall below the solar disconnect switch.





PHOTOGRAPHED UNDER PROTECTIVE ORDER

solar2000 JHD
DC DISCONNECT

CAUTION SOLAR ELECTRIC SYSTEM CONNECTED
CAUTION SOLAR ELECTRIC SYSTEM CONNECTED
RAPID SHUTDOWN SWITCH FOR SOLAR PV SYSTEM
CAUTION

W.T.W. SOLAR PV SYSTEM EQUIPPED WITH RAPID SHUTDOWN
RAPID SHUTDOWN SWITCH FOR SOLAR PV SYSTEM
ALL WORK MUST BE DONE BY A LICENSED ELECTRICIAN

Small grey electrical box

Small grey electrical box

Small grey electrical box

Yellow caution tape