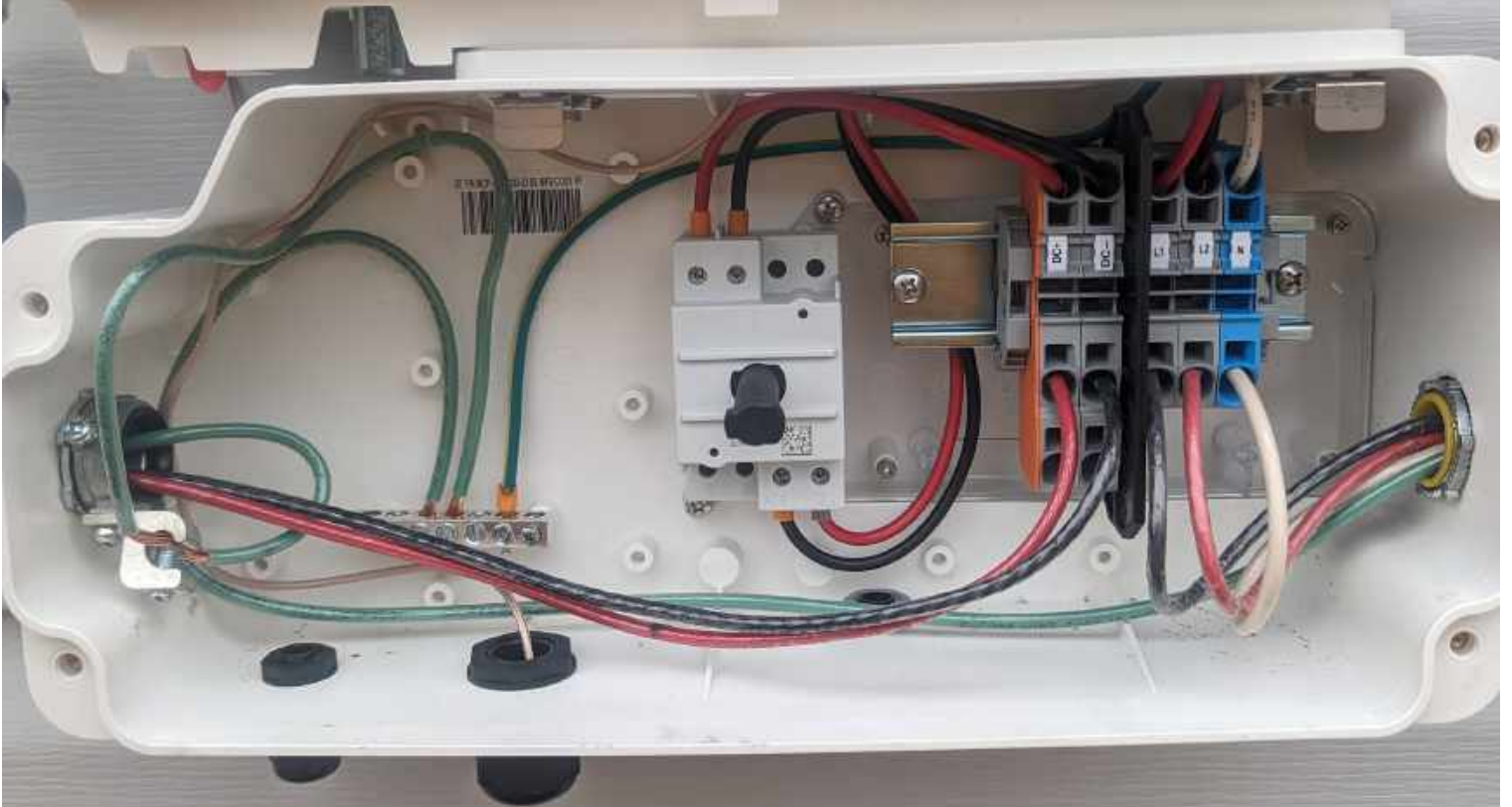


8-60V/14.5A  
1V  
SM3323-01B0F62C2-4B  
5440-10M488M





















We aim for a greener tomorrow with completely clean energy solutions

# Q.PEAK DUO BLK ML-G10+ 405

## PERFORMANCE AT STANDARD TEST CONDITIONS\*

Nominal Power* (15W/-3W)	$P_{mp}$ [W]	405
Short circuit current*	$I_{sc}$ [A]	11.17
Open circuit voltage*	$V_{oc}$ [V]	45.34
Current at maximum power	$I_{mp}$ [A]	10.83
Voltage at maximum power	$V_{mp}$ [V]	37.39
Maximum system voltage	$V_{max}$ [V]	1000 (IEC) 1000 (UL)
Weight	M [kg/lbs]	22.0 / 48.5

\* Measurement tolerances:  $P_{mp} \pm 3\%$ ,  $I_{sc} \pm 1\%$ ,  $V_{oc} \pm 5\%$  at STC: 1000W/m<sup>2</sup>, 25 ± 2 °C, AM 1.5 according to IEC 60904-1. Data given are rated (nominal) values. IEC 61215:2016, IEC 61730:2016.



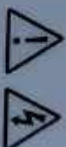
www.tuv.com  
© 111120077



2017235255620100666

# acells

Assembled in USA



### ! DANGER!

Bulk or electric shock  
DO NOT connect or disconnect  
plug sockets with system is  
under load current. Refer to the  
Installation and Operation Manual  
before installing, identifying or  
servicing this unit.

### ! DANGER!

Requis de choc électrique  
NE PAS connecter ni décon-  
necter les connecteurs à l'énergie  
le système est en charge.

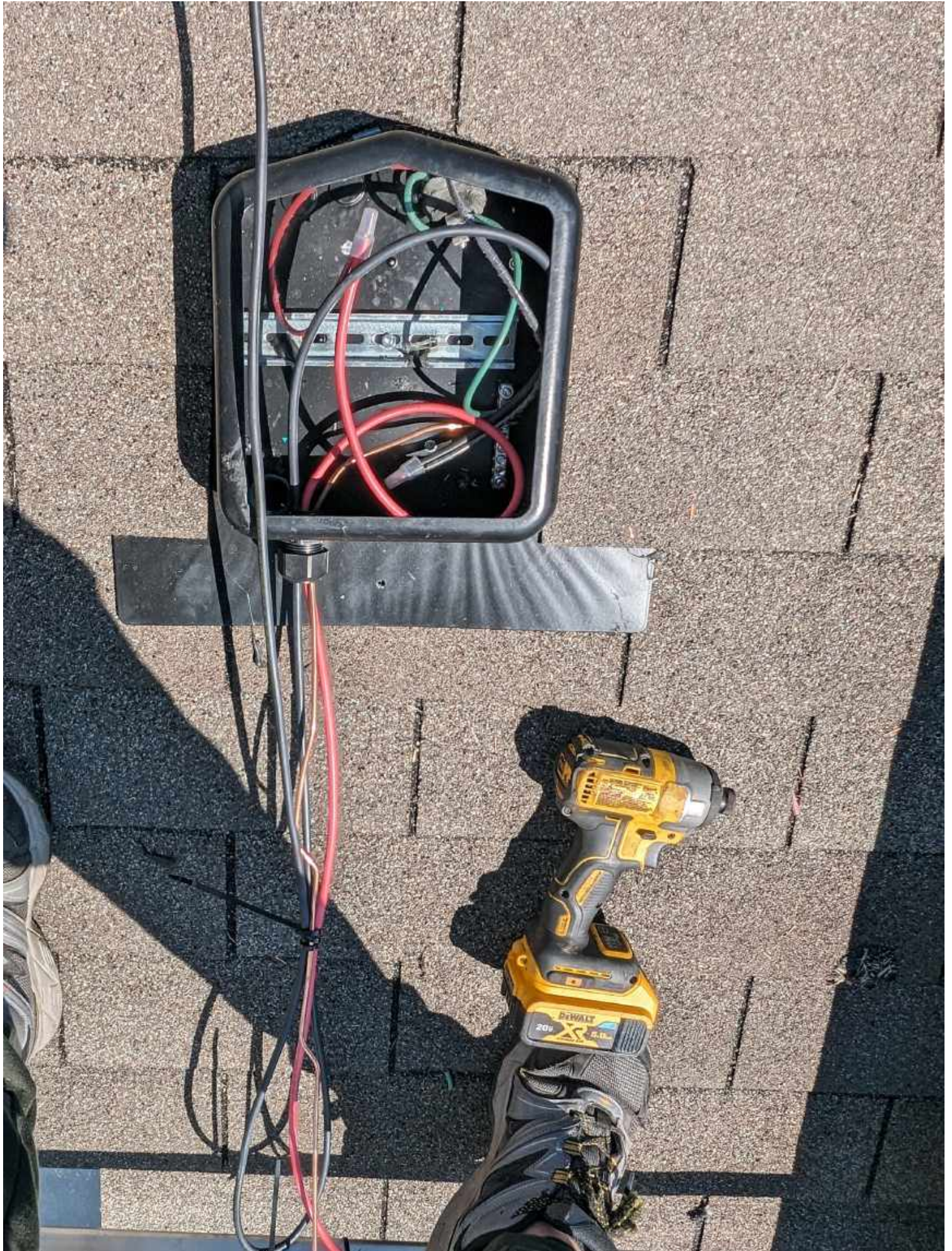
Consulte le manuel de l'installation  
et d'utilisation avant l'installation,  
l'identification et le service du produit.  
Fuse Rating: Class C (Type 2  
Fuse Rating: 30A)

U.S. Patent No. 9,883,215  
(solar cell)

EMAIL: [sales@qcells.com](mailto:sales@qcells.com)  
WEB: [www.qcells.com](http://www.qcells.com)

Q CELLS USA Inc.  
300 Nevada Drive, Dalton GA 30721, USA







Natalie  
De La Cruz  
Barragan

 **SOLADECK**  
www.soladeck.com  
Přizpůsobení: Kombinace konfigurací 30/30/1740; Certified to CSA C22.2 No. 250, Name Type 1B  
 Q1  Q2  Q3  Q4  21  22  23  24  
 0799 Series  0766-41AD  
Max Ratings: 600 VDC/115 AMP/240 VAC/60 AMP/5 Short Circuit: 10KA Ambient Temp 75°C  
Refer to the extraction manual for terminal torque information

⚠ WARNING	⚠ AVERTISSEMENT
 <p>NEVER OPEN COVER OR REMOVE TERMINALS FROM THIS DEVICE WHILE IT IS ENERGIZED. ALWAYS WEAR APPROPRIATE PPE. ALWAYS USE APPROVED TOOLS. ALWAYS USE THE CORRECT WIRE GAUGE FOR THE TERMINAL. ALWAYS USE THE CORRECT TORQUE. ALWAYS WEAR APPROPRIATE PPE. ALWAYS USE APPROVED TOOLS. ALWAYS USE THE CORRECT WIRE GAUGE FOR THE TERMINAL. ALWAYS USE THE CORRECT TORQUE.</p>	<p>NEVER OPEN COVER OR REMOVE TERMINALS FROM THIS DEVICE WHILE IT IS ENERGIZED. ALWAYS WEAR APPROPRIATE PPE. ALWAYS USE APPROVED TOOLS. ALWAYS USE THE CORRECT WIRE GAUGE FOR THE TERMINAL. ALWAYS USE THE CORRECT TORQUE.</p>

R.S.I.C. Enterprises  
Patent No. US 7626,198 B1

240 Coleshill Rd  
Angier NC. 27501



