







Enphase
Platinum
Installer


BLUE RAVEN

1403 N 230 E
Carmel, UT 84401
801-377-4480
bluecraven.com





**PHOTOVOLTAIC SYSTEM
AC DISCONNECT**

WARNING
FLOOD HAZARD
FLOODING MAY OCCUR IN THE
FLOODING HAZARD ZONE
DANGER TO LIFE AND
PROPERTY

WARNING
FLOOD HAZARD
FLOODING MAY OCCUR IN THE
FLOODING HAZARD ZONE
DANGER TO LIFE AND
PROPERTY

WARNING
FLOOD HAZARD
FLOODING MAY OCCUR IN THE
FLOODING HAZARD ZONE
DANGER TO LIFE AND
PROPERTY



EN

WARNING

ELECTRIC SHOCK HAZARD
TERMINALS ON THE LINE AND
WIRING CAN BE ENERGIZED
BY THE OTHER POSITION

**PHOTOVOLTAIC SYSTEM
AC DISCONNECT**

THIS DEVICE IS USED TO
ISOLATE THE SYSTEM FROM
THE MAINS SUPPLY

WARNING

THIS DEVICE IS USED TO
ISOLATE THE SYSTEM FROM
THE MAINS SUPPLY

WARNING

THIS DEVICE IS USED TO
ISOLATE THE SYSTEM FROM
THE MAINS SUPPLY

WARNING

**PHOTOVOLTAIC SYSTEM
CONNECT PANEL**

DO NOT ADD LOADS



WARNING ⚠️
INVERTER OUTPUT CONNECTION
DO NOT RELOCATE
THIS OVERCURRENT
DEVICE

Fireplace

Kitchen

Kitchen

Bathroom

PV SOLAR BREAKER
DO NOT RELOCATE
THIS OVERCURRENT
DEVICE

30 30
On/I Off/O
30 30
On/I Off/O

20 20
On/I Off/O
20 20
On/I Off/O

20 20
On/I Off/O
20 20
On/I Off/O

20 20
On/I Off/O
20 20
On/I Off/O

20 20
On/I Off/O
20 20
On/I Off/O

50 50
On/I Off/O
50 50
On/I Off/O

60 60
On/I Off/O
60 60
On/I Off/O

30 30
On/I Off/O
30 30
On/I Off/O

⚠ WARNING

ELECTRIC SHOCK HAZARD
TERMINALS ON THE LINE AND
LOADS MAY BE ENERGIZED
IN THE OPEN POSITION

**PHOTOVOLTAIC SYSTEM
⚠ AC DISCONNECT ⚠**

150V AC OUTPUT CURRENT 15.0 A
NOMINAL OPERATING VOLTAGE 120 V AC

⚠ WARNING

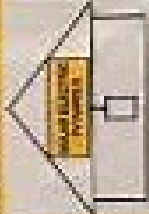
DUAL POWER SUPPLY
SOURCES: UTILITY GRID AND
PV SOLAR ELECTRIC SYSTEM

⚠ WARNING

THIS IS A DANGEROUS ELECTRICAL
EQUIPMENT. PROTECT YOURSELF FROM
ELECTRIC SHOCK. READ AND UNDERSTAND
ALL INSTRUCTIONS BEFORE USE.

**SOLAR PV SYSTEM EQUIPPED
WITH RAPID SHUTDOWN**

TURN RAPID SHUTDOWN
SWITCH TO THE
"OFF" POSITION TO
SHUT DOWN PV SYSTEM
AND REDUCE
SHOCK HAZARD
IN THE AREA









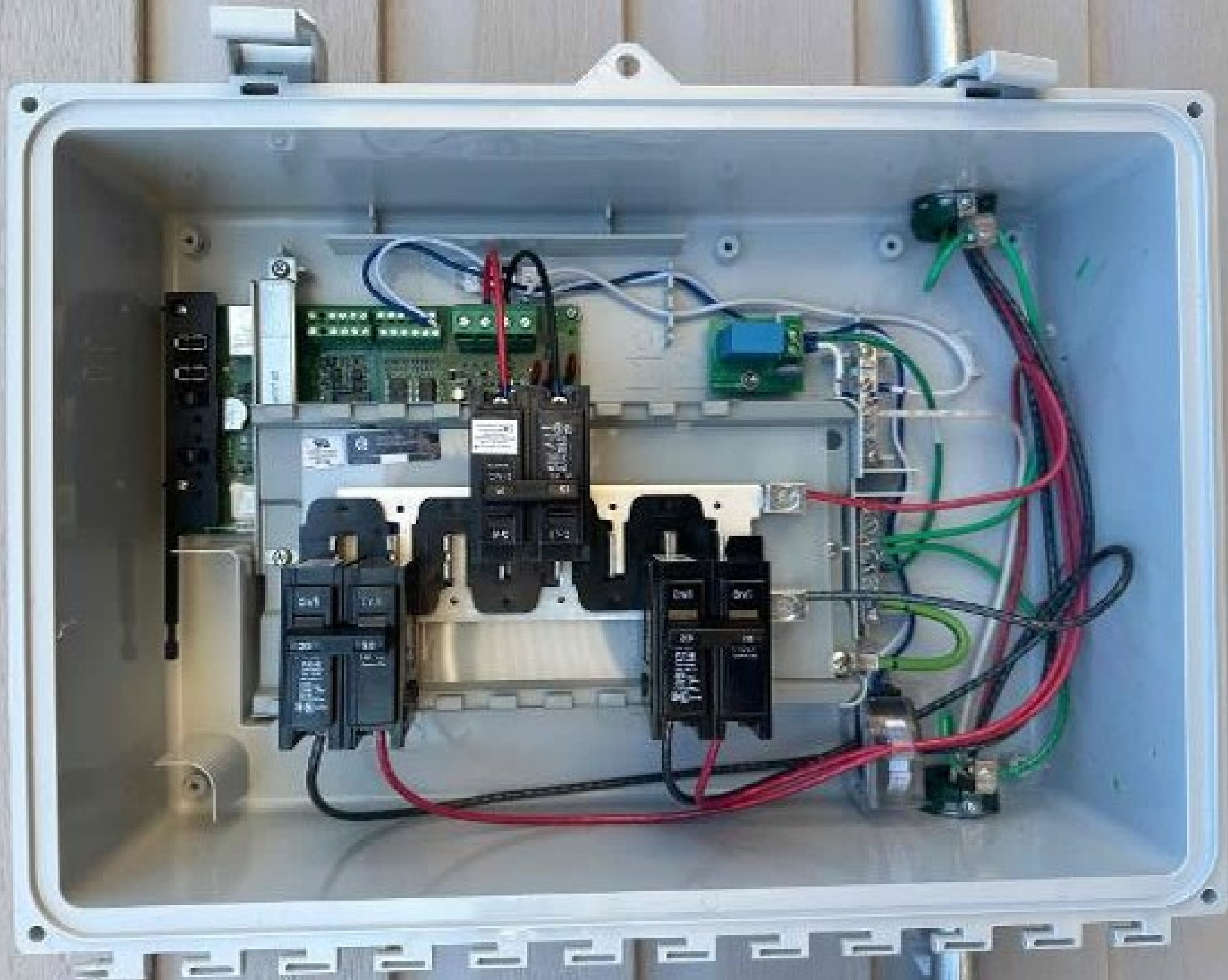




Wiring Diagram
11
12
13
14
15
16
17
18
19
20
21
22
23
24
25
26
27
28
29
30
31
32
33
34
35
36
37
38
39
40
41
42
43
44
45
46
47
48
49
50
51
52
53
54
55
56
57
58
59
60
61
62
63
64
65
66
67
68
69
70
71
72
73
74
75
76
77
78
79
80
81
82
83
84
85
86
87
88
89
90
91
92
93
94
95
96
97
98
99
100

TIMING DISCONTINUITY
E2500







WARNING

INVERTER OUTPUT CONNECTION

DO NOT RELOCATE
THIS OVERCURRENT
DEVICE

Fireplace

Kitchen

Kitchen

Bathroom

PV SOLAR BREAKER
DO NOT RELOCATE
THIS OVERCURRENT
DEVICE

On/I	30	On/I	30
Off/O	30	Off/O	30

On/I	20	On/I	20
Off/O	20	Off/O	20

On/I	20	On/I	20
Off/O	20	Off/O	20

On/I	20	On/I	20
Off/O	20	Off/O	20

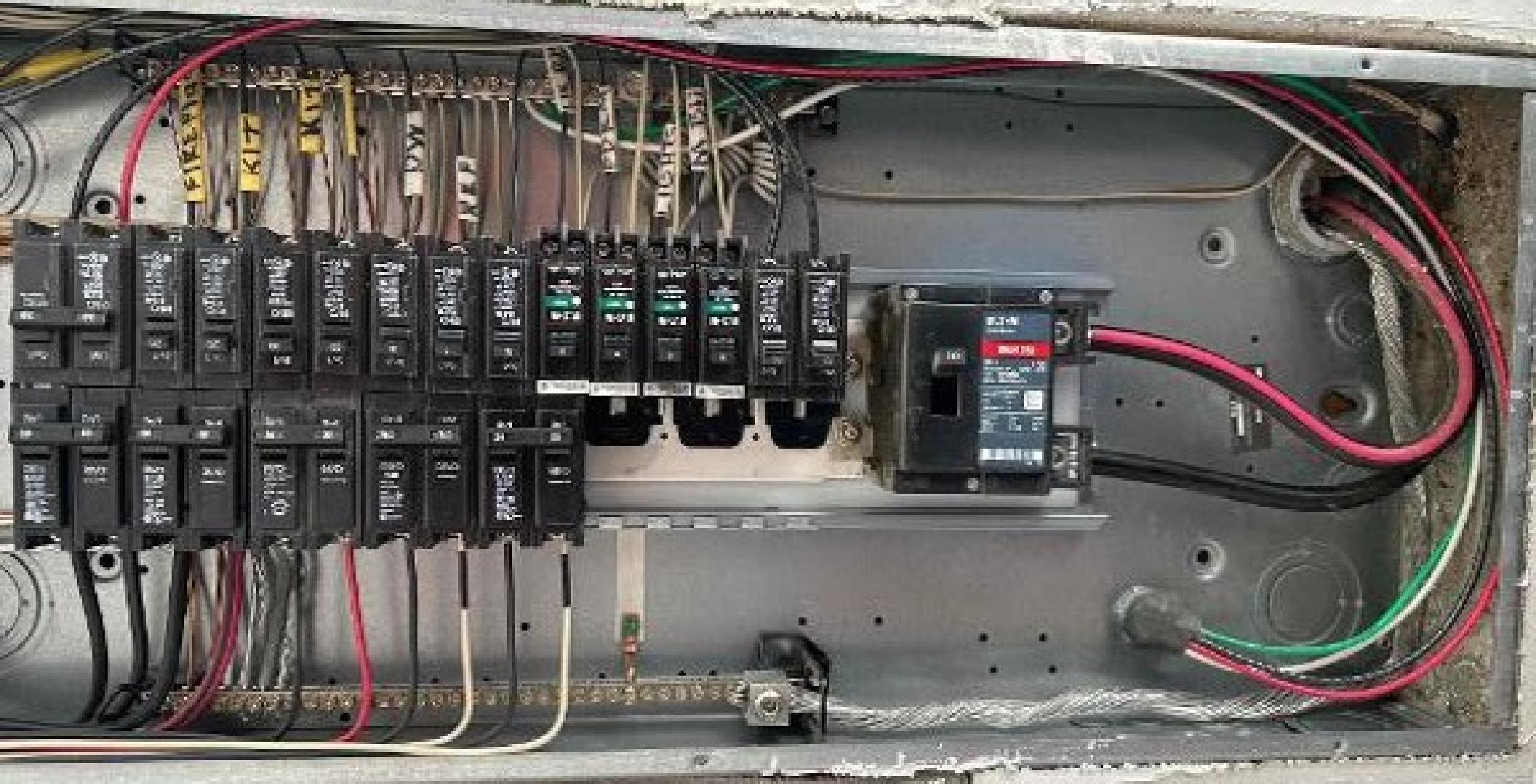
On/I	20	On/I	20
Off/O	20	Off/O	20

On/I	50	On/I	50
Off/O	50	Off/O	50

On/I	60	On/I	60
Off/O	60	Off/O	60

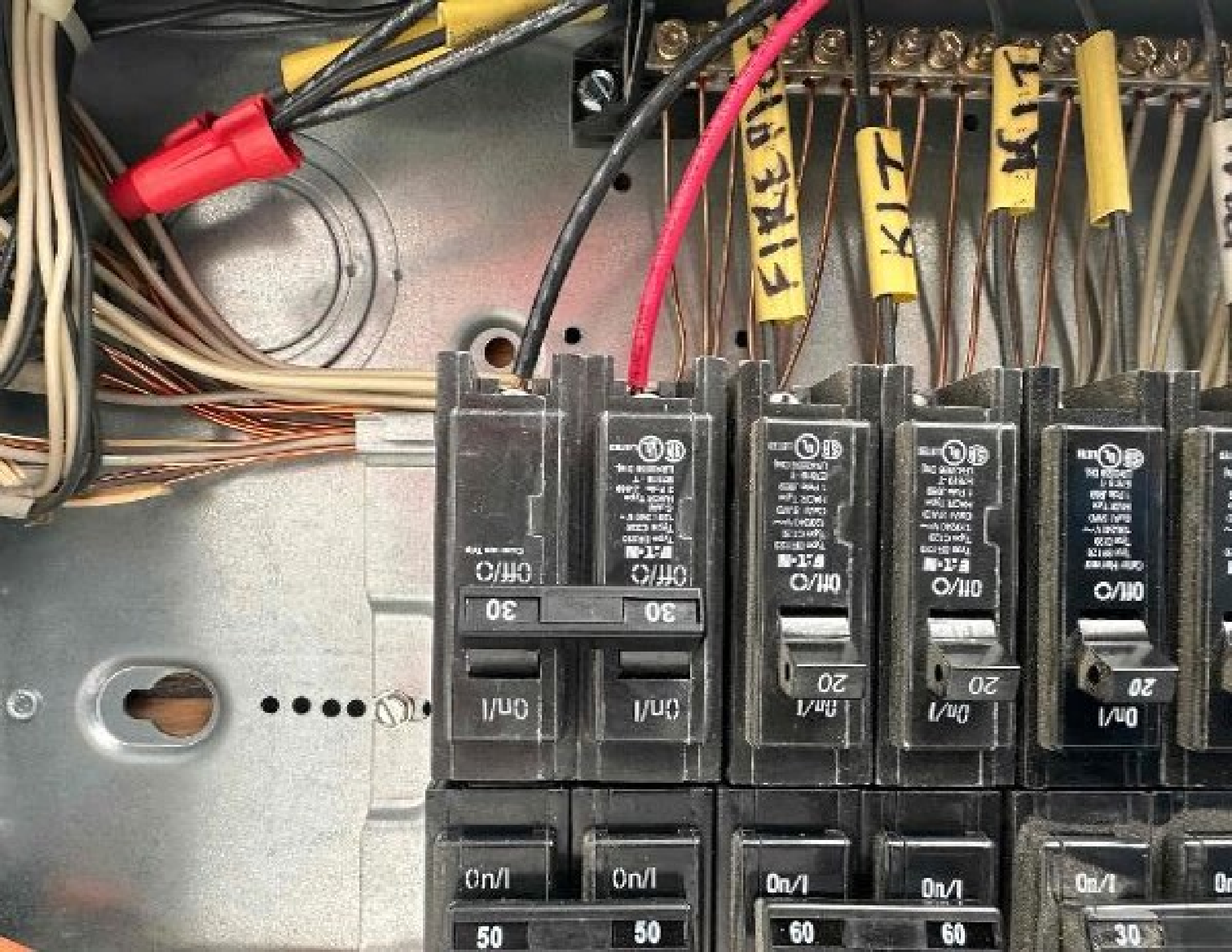
On/I	30	On/I	30
Off/O	30	Off/O	30







iQ
iQ Systems
1-800-800-0000
www.iqsystems.com
Model No. 115-1000-01
P/N: 115-1000-01
Rev. 1.0



Off/O

30

On/I

Off/O

30

On/I

Off/O

20

On/I

Off/O

20

On/I

Off/O

20

On/I

On/I

50

On/I

50

On/I

20

On/I

20

On/I

30

K19

K17

K18





WARNING

INVERTER OUTPUT CONNECTION

DO NOT RELOCATE THIS OVERCURRENT DEVICE

Fireplace

Kitchen

Kitchen

Bathroom

PV SOLAR BREAKER
DO NOT RELOCATE THIS OVERCURRENT DEVICE

On/O	30	On/O	30
On/O	30	On/O	30

On/O	20	On/O	20
On/O	20	On/O	20

On/O	20	On/O	20
On/O	20	On/O	20

On/O	20	On/O	20
On/O	20	On/O	20

On/O	20	On/O	20
On/O	20	On/O	20

On/O	50	On/O	50
On/O	50	On/O	50

On/O	60	On/O	60
On/O	60	On/O	60

On/O	30	On/O	30
On/O	30	On/O	30

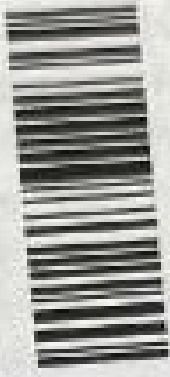


30MM SPLICE 6.5" SFM

253010U



UNIRAC
BETTER SOLAR STARTS HERE



PACKAGE QTY: 10 EA
WQ/PO#: 0045726-01
MANUFACTURE DATE: 08/2022
FACTORY CODE: 008A



California Proposition 65: WARNING: Cancer &
Reproductive Harm www.P65Warnings.ca.gov

www.unirac.com



CONDUIT 1/2" UNF LATEX 10'
TYPE 30-30 3/4" DIA. 1" 1/2" 1/2"



 **ENPHASE.**

IQ7X

IQ 7X Grid Support Interactive Inverter
For Enphase patent information, refer to:
<http://enphase.com/company/patents/>

Power factor range: 0.9-1.0
DC input range: 25-75V
Max. input short circuit current: 10A
Max. input continuous current: 6.5A
AC output voltage: 208/240V
AC output current: 1.2 / 1.25A
AC output frequency: 60Hz
AC output power (max. continuous): 2700W
Operating temperature: -40°C to +40°C
Ingress protection: NEMA Type 4
Photovoltaic Rapid Shutdown Equipment
NRC 690.12 and C411-2012 Rule 64.214
UL 1741 SA Compliant (Assembled in Mexico)



This device complies with part 15 of the FCC Rules. Operation is subject to the following two conditions: (1) This device may not cause harmful interference. (2) This device must accept any interference received, including interference that may cause undesired operation.



CAUTION: RISK OF SHOCK. WARRANTY VOID IF COVER REMOVED. NO USER-SERVICEABLE PARTS INSIDE. REFER SERVICING TO QUALIFIED SERVICE PERSONNEL.

WARNING: ELECTRIC SHOCK HAZARD. DC CONDUCTORS OF THIS PHOTOVOLTAIC SYSTEM ARE UNGROUNDING AND MAY BE ENERGIZED. AC AND DC VOLTAGE SOURCES TERMINATE INSIDE THIS EQUIPMENT. DO NOT CONTACT BOTH BEFORE SERVICING. PHOTOVOLTAIC ARRAY SUPPLIES A DC VOLTAGE TO THIS EQUIPMENT WHEN EXPOSED TO LIGHT. HOT SURFACES. TO REDUCE THE RISK OF BURNS - DO NOT TOUCH.

ATTENTION: RISQUE D'ELECTROCUTION. LES CONDUCTEURS CC DE CE SYSTEME PHOTOVOLTAIQUE NE SONT PAS RELIES A LA TERRE ET PEUVENT ETRE SOUS TENSION DES SOURCES DE TENSION CA ET CC SONT CONNEXES A CET APPAREIL. NE TOUCHEZ PAS LES DEUX SOURCES AVANT TOUTE INTERVENTION. LES CABLES COURANT CONTINU SONT SOUS TENSION LORSQUE LE CHAMP PHOTOVOLTAIQUE EST EXPOSE A LA LUMIERE. RISQUE DE BRULURE. NE PAS TOUCHER.



DANGER
ELECTRIC SHOCK
DO NOT OPEN
UNLESS YOU ARE
A QUALIFIED
ELECTRICIAN











FLASHKIT SFM SLIDER 8

004271D

FLASHKIT SFM SLIDER 8 COMP DRK
DARK Pack Size : 10
Factory Code: 5-1



WIP OF 0045418-03 Manufacture date: 2010-12-21 10:22













WARNING

INVERTER OUTPUT CONNECTION

DO NOT RELOCATE THIS OVERCURRENT DEVICE

PV SOLAR BREAKER
DO NOT RELOCATE THIS OVERCURRENT DEVICE

Fireplace

Kitchen

Kitchen

Bedroom

50	50
On/Off	On/Off
50	50
On/Off	On/Off

20	20
On/Off	On/Off
20	20
On/Off	On/Off

20	20
On/Off	On/Off
20	20
On/Off	On/Off

20	20
On/Off	On/Off
20	20
On/Off	On/Off

20	20
On/Off	On/Off
20	20
On/Off	On/Off

50	50
On/Off	On/Off
50	50
On/Off	On/Off

60	60
On/Off	On/Off
60	60
On/Off	On/Off

30	30
On/Off	On/Off
30	30
On/Off	On/Off



















REC

REC Alpha Pure-R Series
REC200A Pure-R
Serial Number: FBI-7006-101989

Phone: +41 544 544
www.recgroup.com

Power Output (Power)
When Class Bursting
Power Production Tolerance
Rated Voltage (Output)
Rated Current (Input)
Open Circuit Voltage (Voc) (1-1) SW
Short Circuit Current (Isc) (1-1) SW
Maximum System Voltage (Vmp)
Maximum Series Fuse (MSF) (SW)
Maximum Series Fuse (DC) (REC)
Design Load
Maximum Test Load
Voltage at STC: 1000 W/m² (1.0 sun) (1%
Tolerance at STC)

400 W
0 + 10 W
±1.3 %
10.0 V
8.40 A
88.4 V
8.88 A
1000 V
25 A
25 A
+ 2000 / -2000 W*
+ 2000 / -4000 W*



• ETL Listed
to the ETL
Listing
Requirements
for the Energy Star®
Program

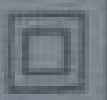
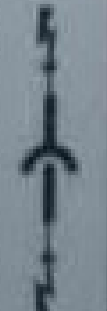


100 PERCENT



See additional details on www.recgroup.com

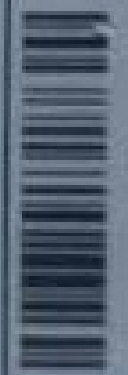
Manufacture: 15.08.2010



Warning Electrical Hazard: This product contains extremely sharp metal exposed to you. CAUTION: DO NOT DISCONNECT UNDER LOAD

Attention: Please do not disconnect. To avoid serious product or equipment damage, do not exceed 4.5 seconds.
ATTENTION: NE PAS DECONNECTER SANS TENSION
For these connections, use only 4 mm² (AWG 14) or above (provided for a max. of 800W) double insulation by REC (see REC 175, 176)
do not touch the device or the components during installation

Manufacturer: REC Solar GmbH, Seefeld
Bavaria, 716, 87641 Seefeld, Germany, Tel: +49 8996 444 9999
For more information visit: www.recgroup.com













IQ Combiner 4
Photovoltaic
Combiner Box
X2-IQ-AM1-240-4
IEEE1547:2018 COMPLIANT



Electrical ratings

Voltage 240VAC, 60Hz
DG Breakers 80A MAX (combined)
DG Inputs 64A MAX (combined)
Output 65A MAX, 90A MAX feeder OCPD
Temperature 45 °C MAX ambient
 For DG breaker, use only Eaton BR series.

100 MILLIVOLT
202335069810

S/N: **202335069810**

PPN:

100 MILLIVOLT
202335069810

Dedicated solar and DG Combiner Box - do not add loads
 10 AMP or 15 AMP 1-pole Gateway breaker not supported for loadless

Connection	Wire size	Torque
DG Breaker (1, 2, 3, 4)	14-10 AWG	2.2 Nm (20 lb-in)
	8 AWG	2.0 Nm (18 lb-in)
	4-4 AWG	3.0 Nm (27 lb-in)
DGs Circuit breaker only	4-10 AWG	3.0 Nm (27 lb-in)
	14-10 AWG	2.2 Nm (20 lb-in)
1-pole Gateway Breaker	2-10 AWG	2.4 Nm (21 lb-in)
	14-2 AWG	5.1 Nm (45 lb-in)
Neutral and ground	2-2 AWG	2.4 Nm (21 lb-in)
	8 AWG	2.0 Nm (18 lb-in)
	10-14 AWG	2.2 Nm (20 lb-in)
Main lug	1/2" - 3/8"	5.0 Nm (45 lb-in)
	3/8" - 1/2"	5.5 Nm (50 lb-in)

Combiner connections only rated min. 75°C
 follows IEEE 1547.2018, or IEEE 1547.2011 part 1, and all local codes

For DG Breaker (as of March 2019, use when installed for 100%
 loaded or 75°C applications.

Manufactured in California and New Zealand
 Made in Mexico

