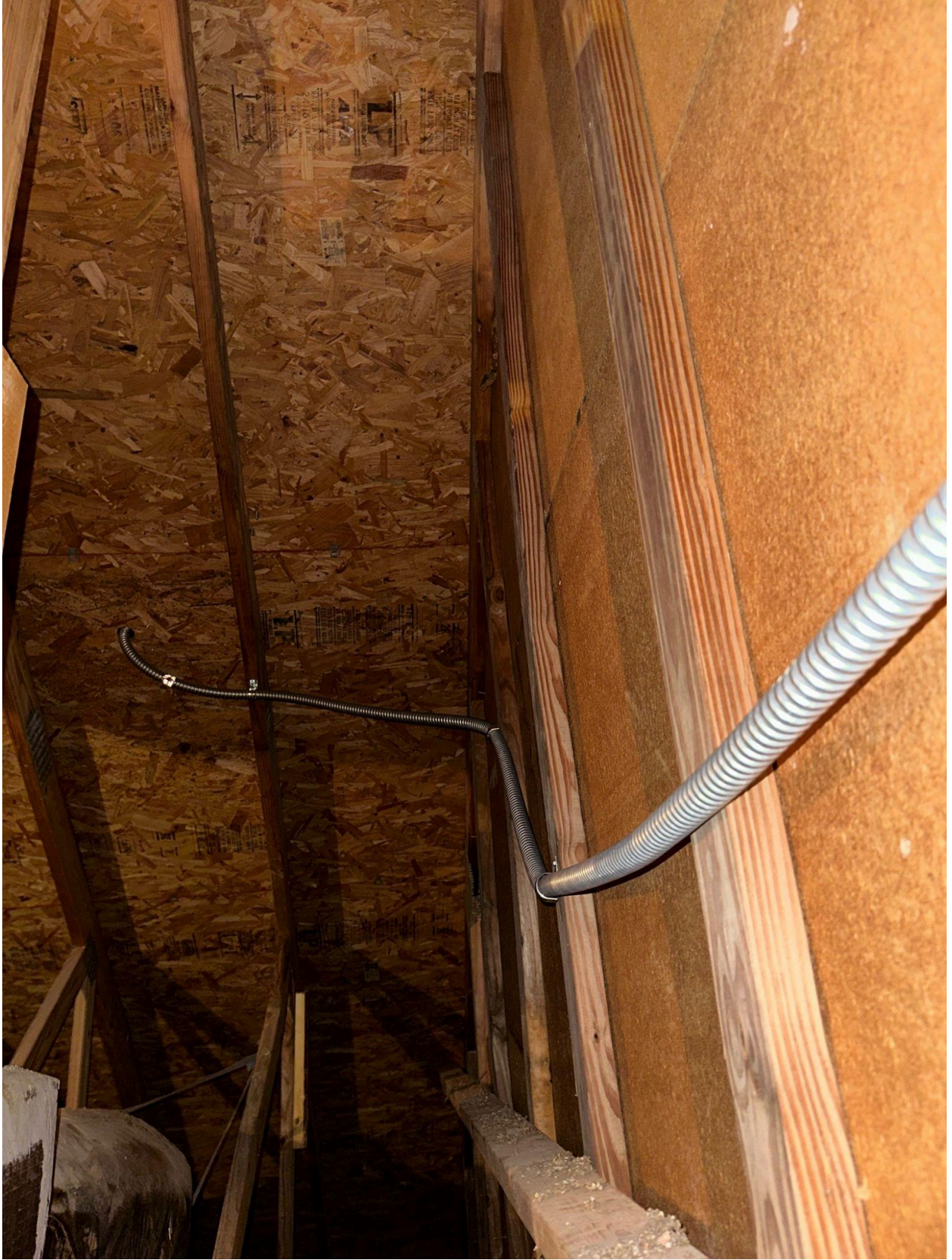




WORKING
CROWD







16:22

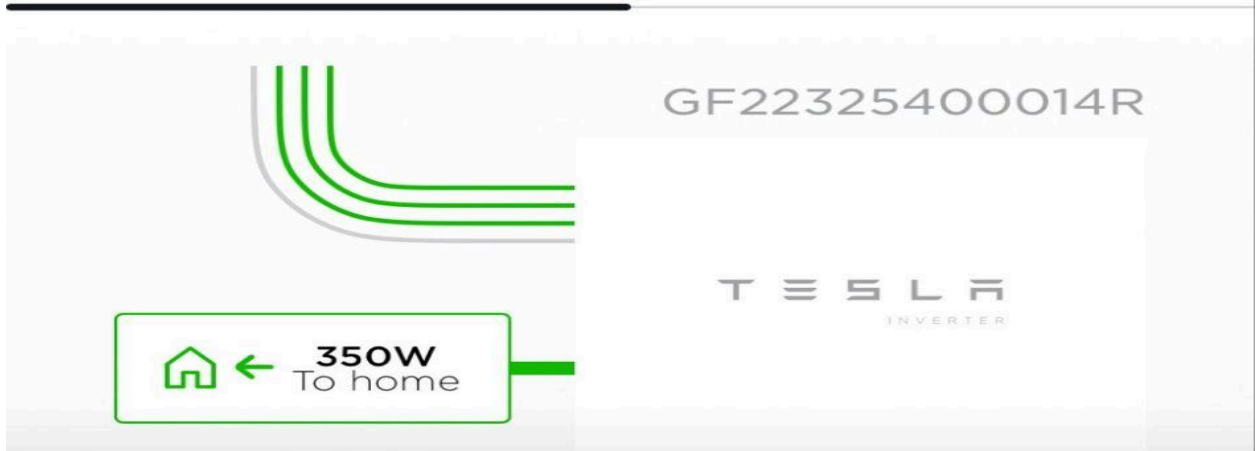
42



Tesla Solar Inverter

Inverter

Metering



Solar Inverter

Disabled

DC Only

Enabled

Inverter State Active

AC Voltage (L-L) 245.6V

Line 1 122.7V

Line 2 123V

Max Current Output 32A (7.6 kW) >
Tap to Set

Solar DC Inputs



Serial No. **M230509-A0635**



Model Number	MSE395SX9R
Rated Maximum Power	[W] 395 (-0/+3%)
Open – Circuit Voltage	[V] 45.2
Voltage at Pmax	[V] 37.0
Short – Circuit Current	[A] 11.24
Current at Pmax	[A] 10.68
Max. System Voltage	[V] 1000
Max. Series overcurrent protective device (where required) fuse rating	[A] 20
Standard test condition	AM=1.5 E=1000W/m² Tc=25°C



For field connections, use Cu only, 12AWF (US, CANADA), 4mm2 (EU, Asia) wires insulated for a minimum of 90°C, rated for wet conditions and resistant to ultra violet radiation (where exposed). See installation manual for PV connector details and compatibility. Avertissement Risque de choc électrique. Ce module produit des tensions élevées dans la lumière du soleil. Risque électrique peut choquer, brûler ou de provoquer la mort. Ne pas toucher la borne.



Fire Rating : Type 1
 Class of Equipment: Class II
 Design Load: Minimum 3600 Pa front and minimum 1600 Pa back load

Warning
 PV modules generate voltage even with very weak light. Do not open the junction box. Les modules PV produisent tension même en basse lumière.
 Ne pas ouvrir la boîte de jonction.



Buy American Act & the American Recovery and Reinvestment Act



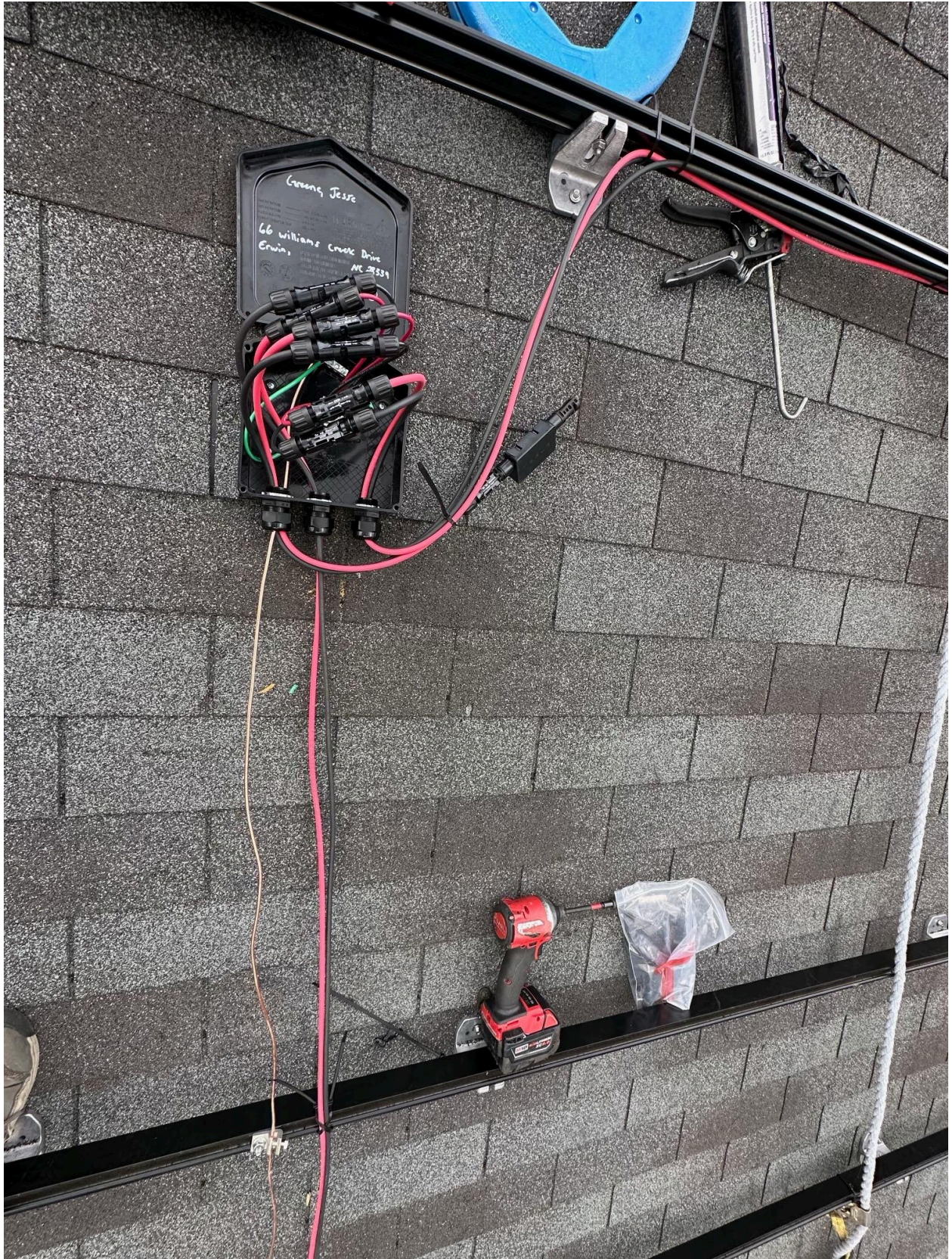
MADE ASSEMBLED IN THE USA

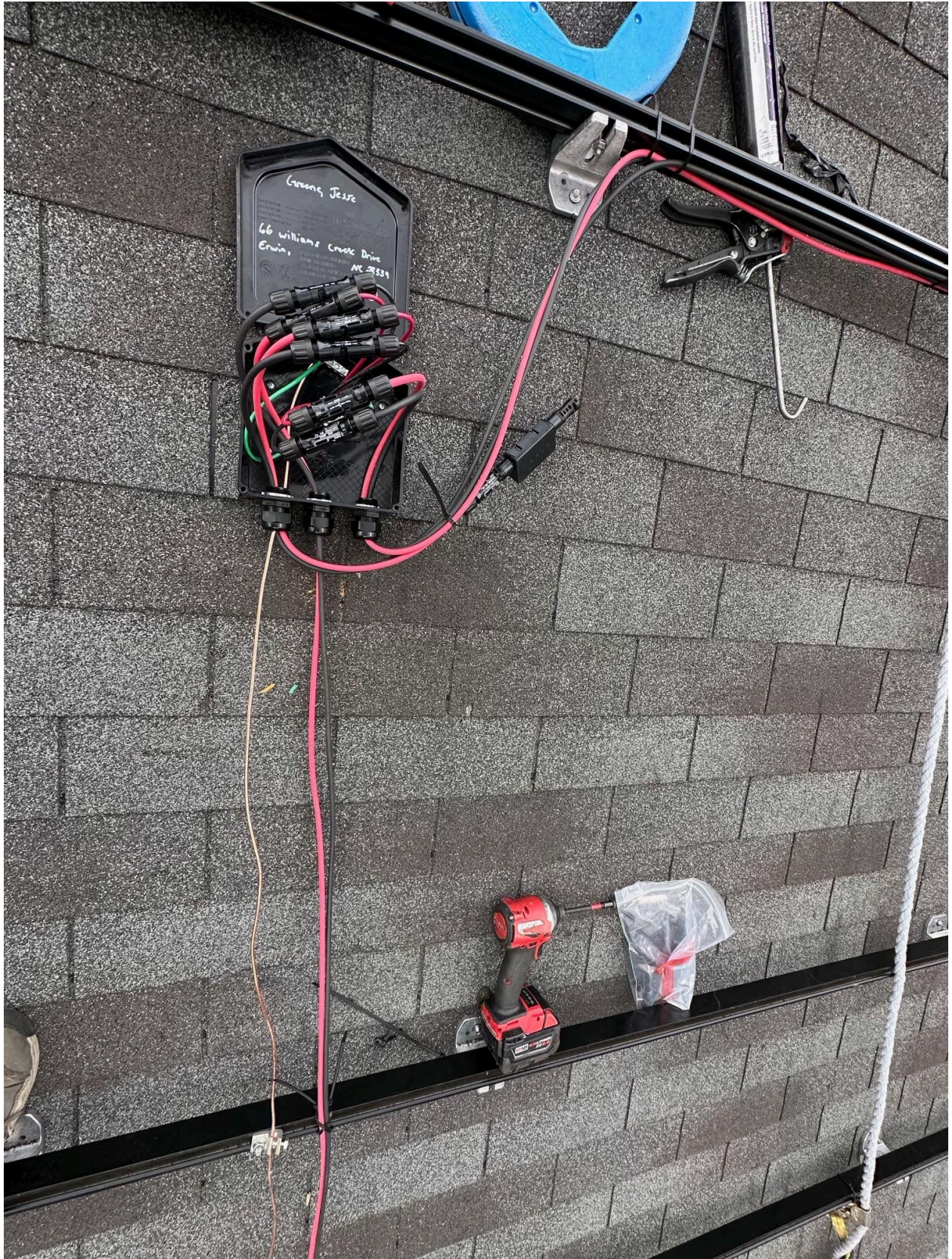
Address:
 8303 S. New Braunfels Ave.
 San Antonio, TX 78235

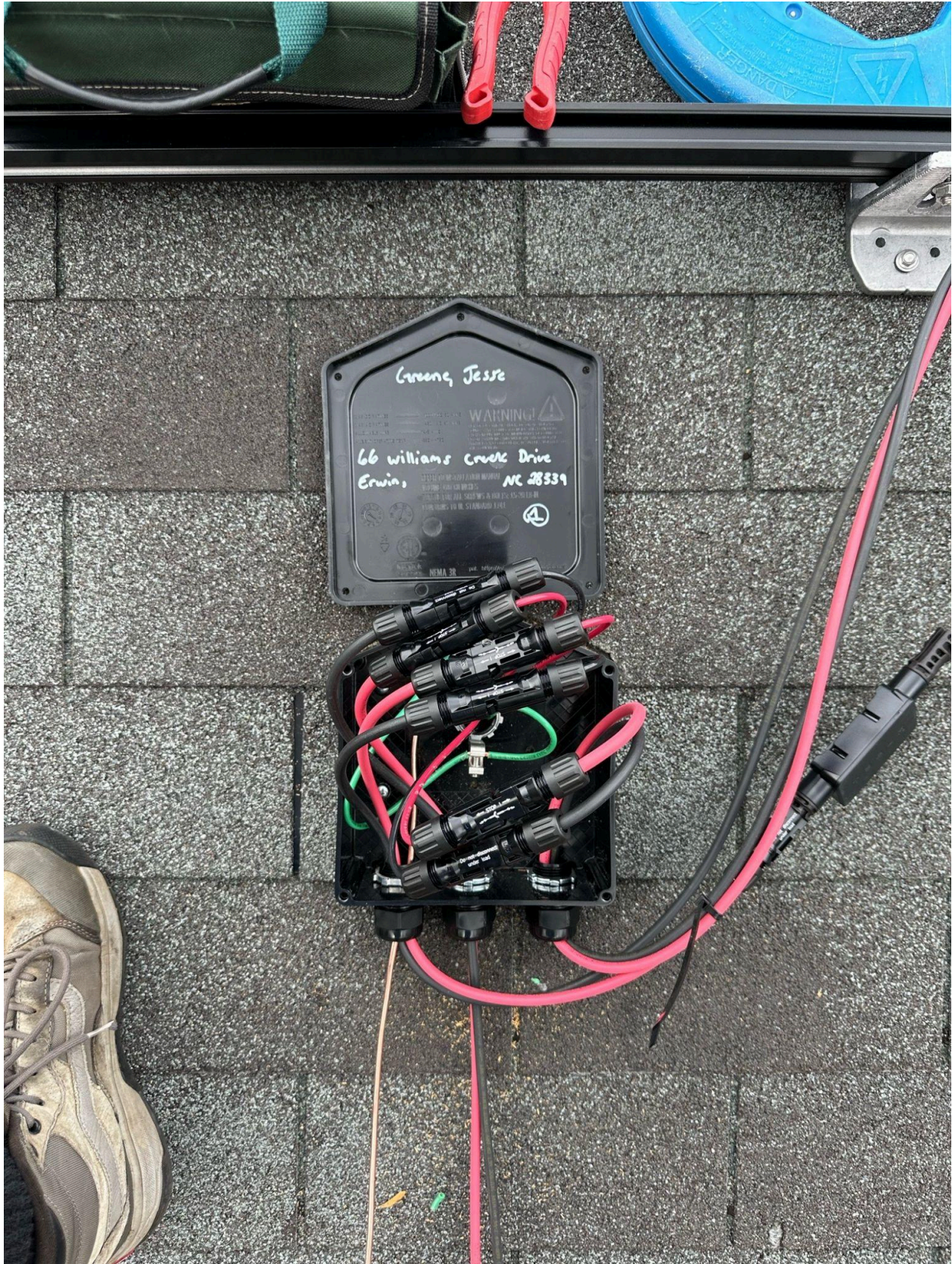
ASSEMBLED IN THE USA











Greeng, Jesse

66 Williams Creek Drive
Erwin, NC 28339

4

WARNING

NEMA 3R



Greene, Jesse

66 Williams Creek Drive
Erwin, NC 28539

WARNING!



REFER TO INSTALLATION MANUAL
FOR WIRE GAUGES AND
TERMINAL TORQUE FOR ALL SCREWS & BOLTS. REFER TO
CONDUIT TO N.E. STANDARD 7-113



Interlock SYSTEMS NEMA 3R

Do not disconnect
under load

STOP

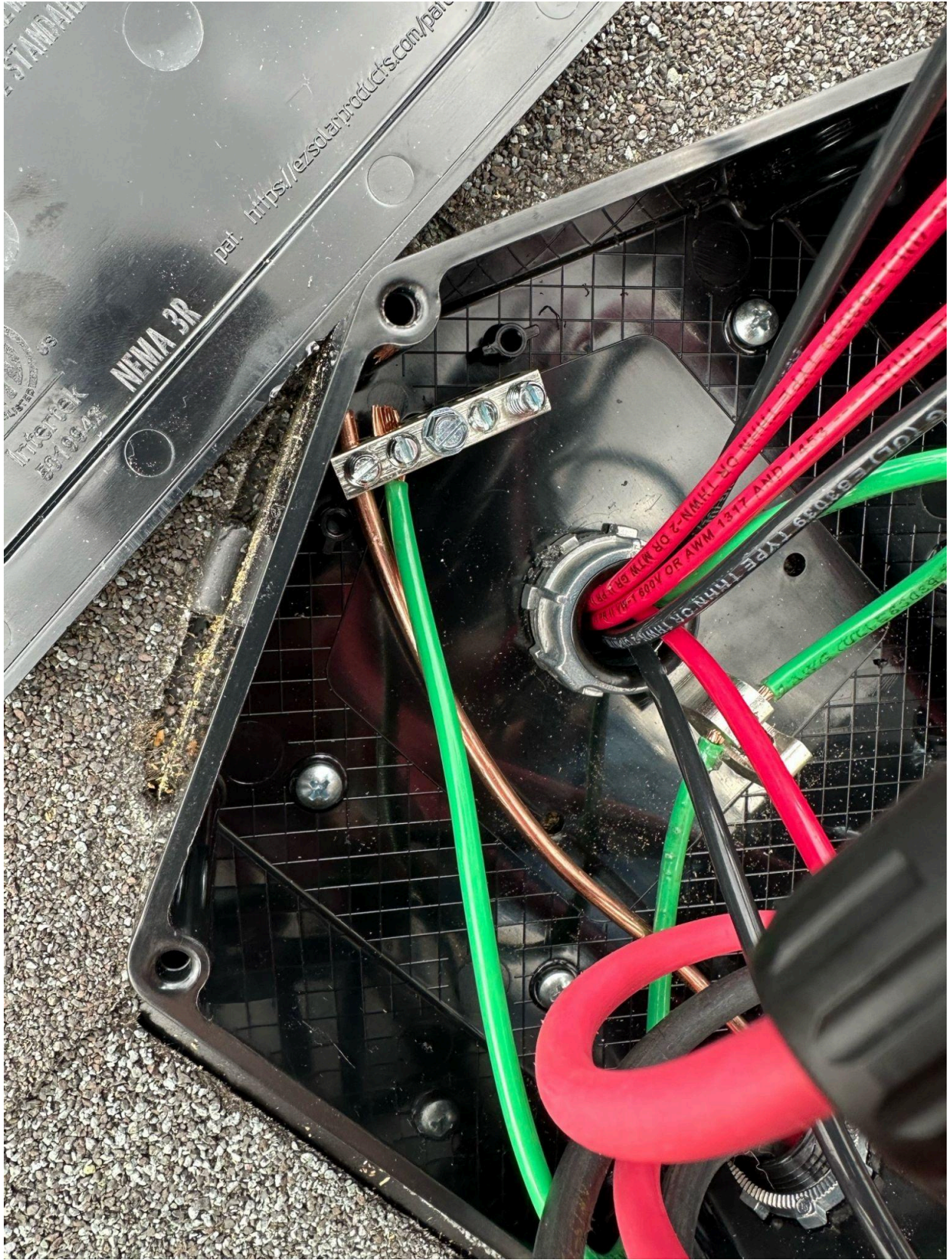
STOP

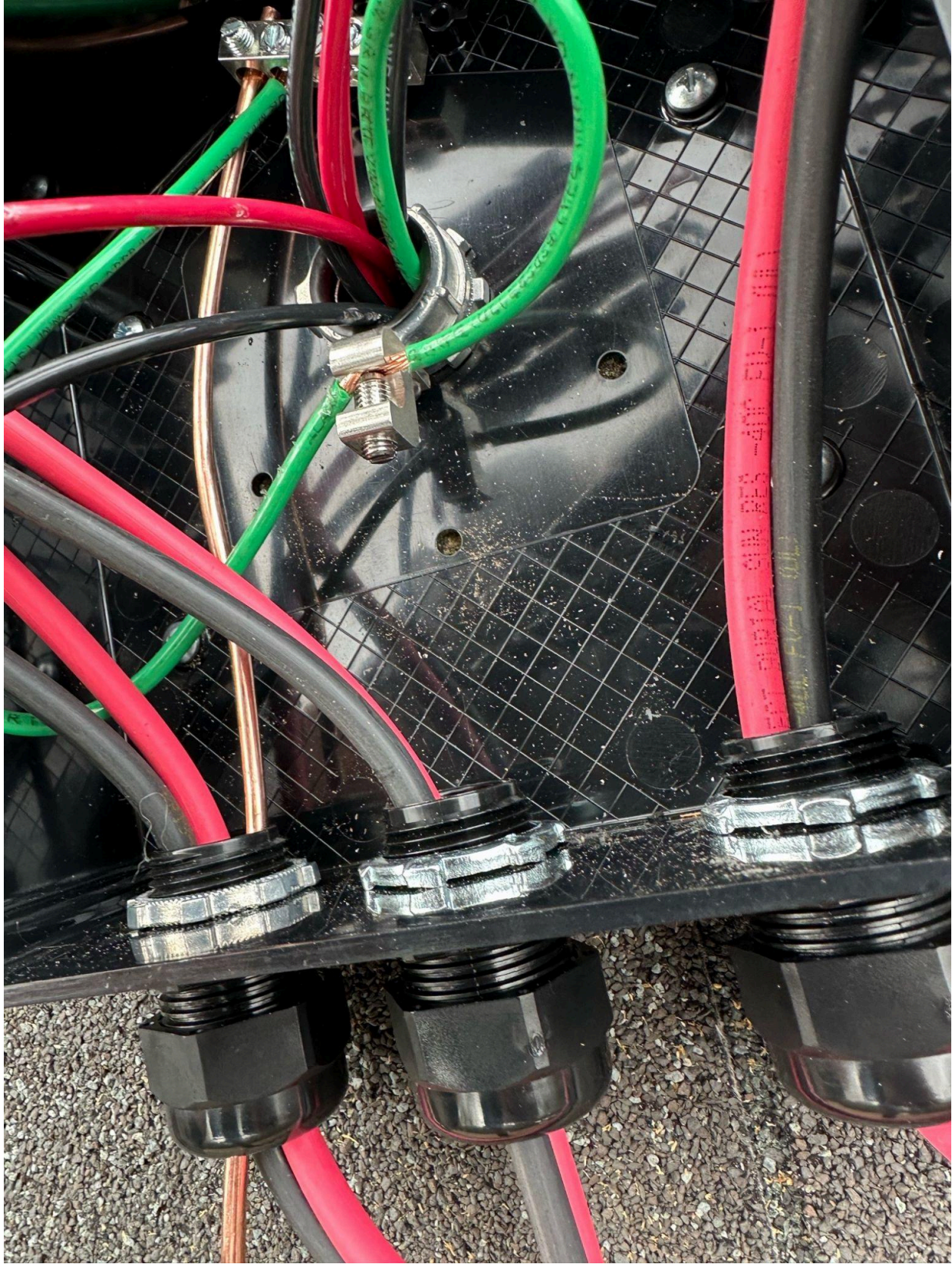
STOP

STOP

STOP

Do not disconnect
under load







Greene, Jesse

EZ
SOLAR

66 Williams Creek Dr.

Erwin, JB-1.2

NC 28339

Patents: ezsolarproducts.com/patents

①





