









PROVIDE THE POWER SOURCE

Building Your Trust in Solar

PHOTOVOLTAIC MODULE

Modules assembled in the USA from solar cells made in Vietnam

Star Module Type: JKM555M-72HR-V

Maximum Power (Pmax)	375W
Power Tolerance	±3%
Maximum Power Voltage (Vmp)	31.80V
Maximum Power Current (Imp)	11.80A
Open Circuit Voltage (Voc)	48.80V (±1%)
Short Circuit Current (Isc)	12.04A (±1%)
Maximum System Voltage	1500VDC
Max. Cell Temperature (Tc) at 1000W/m² Irr.	25A
Operating Temperature	-40°C ~ +85°C
Protection Class	IP67
Max. Wind Pressure (15m/s)	1400Pa (ASTM E1862-10)
Weight	22.5kg
Clear Junc.	2008 ± 105 (± 400mm)
STC	1000W/m² AM1.5, 25°C
Carrier Sorting	2



System Site Rating: See installation instructions for installation.
 Measurements for Assemblies in Standard System from Check Energy with this Product.
 The Site Rating is Class 1 in Canada.

WARNING
 EN61215 certified photovoltaic modules should be performed in accordance with the latest standards.
 BE AWARE of dangerous high DC voltage when connecting modules.
 DO NOT damage or scratch the rear surface of the module.
 See module literature for appropriate handling instructions.

AVERTISSEMENT
 Les modules photovoltaïques certifiés EN61215 doivent être installés conformément aux dernières normes.
 PRENEZ GARDE des tensions élevées dangereuses lors de la connexion des modules.
 NE PAS endommager ou rayer la surface arrière des modules.
 Voir la littérature des modules pour les instructions de manipulation appropriées.
 Pour les conditions de site, voir les conditions de site pour un minimum de 1000 W/m², AM1.5, 25°C et une humidité relative de 50% (sauf indication contraire).

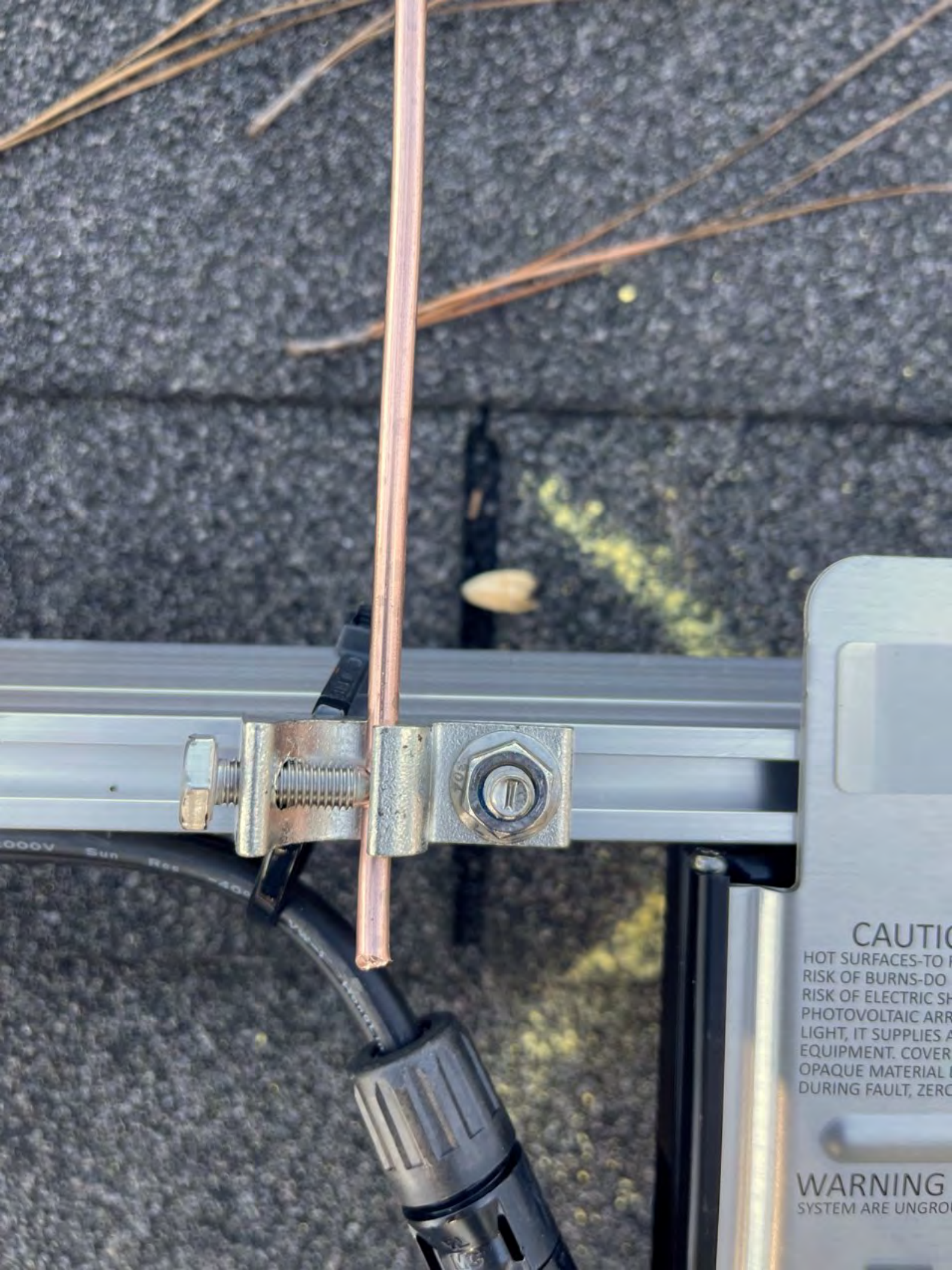




17 rolls
LITTON

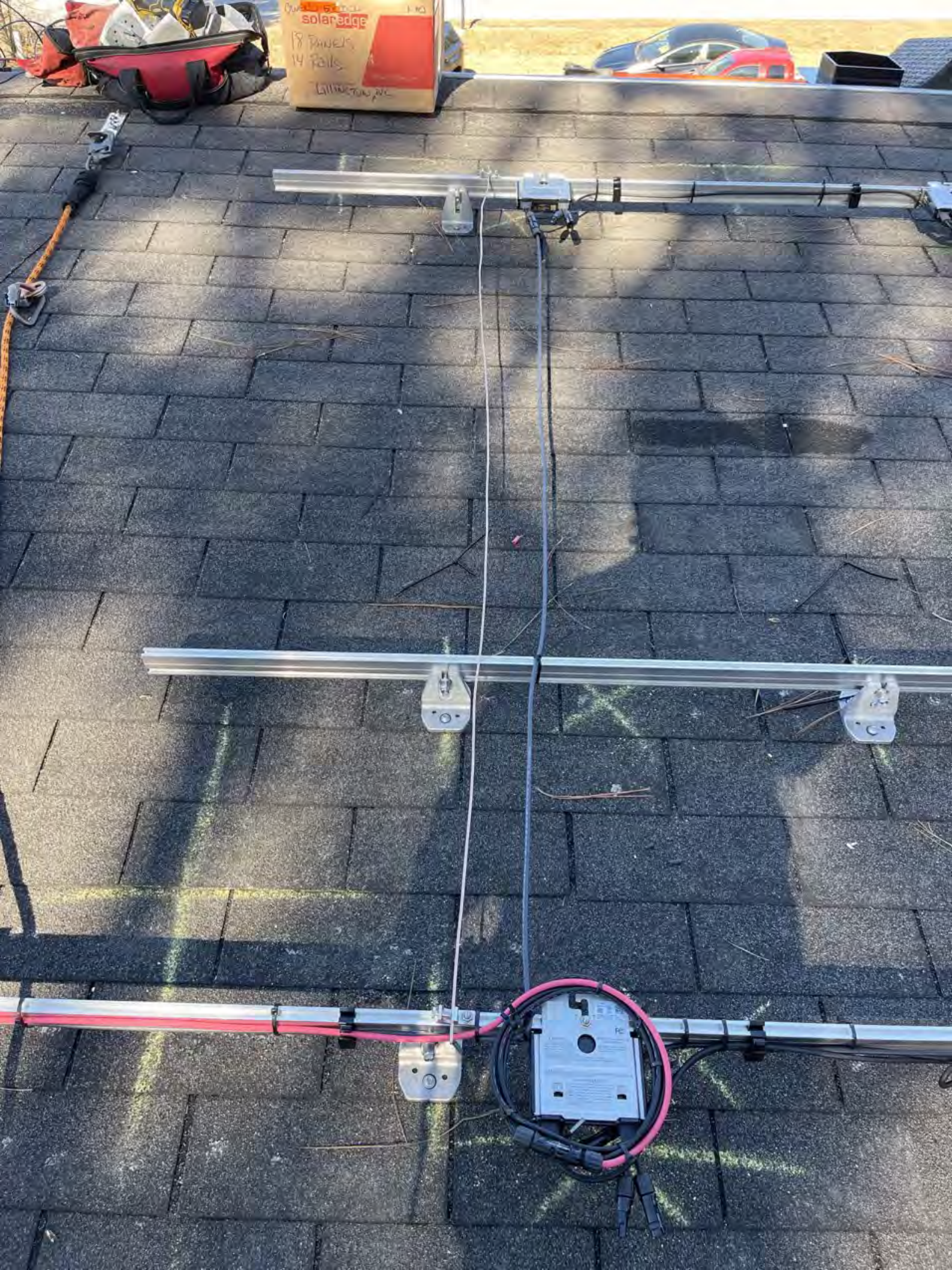






CAUTION
HOT SURFACES-TO
RISK OF BURNS-DO
RISK OF ELECTRIC SH
PHOTOVOLTAIC ARR
LIGHT, IT SUPPLIES A
EQUIPMENT. COVER
OPAQUE MATERIAL
DURING FAULT, ZERO

WARNING
SYSTEM ARE UNGRO



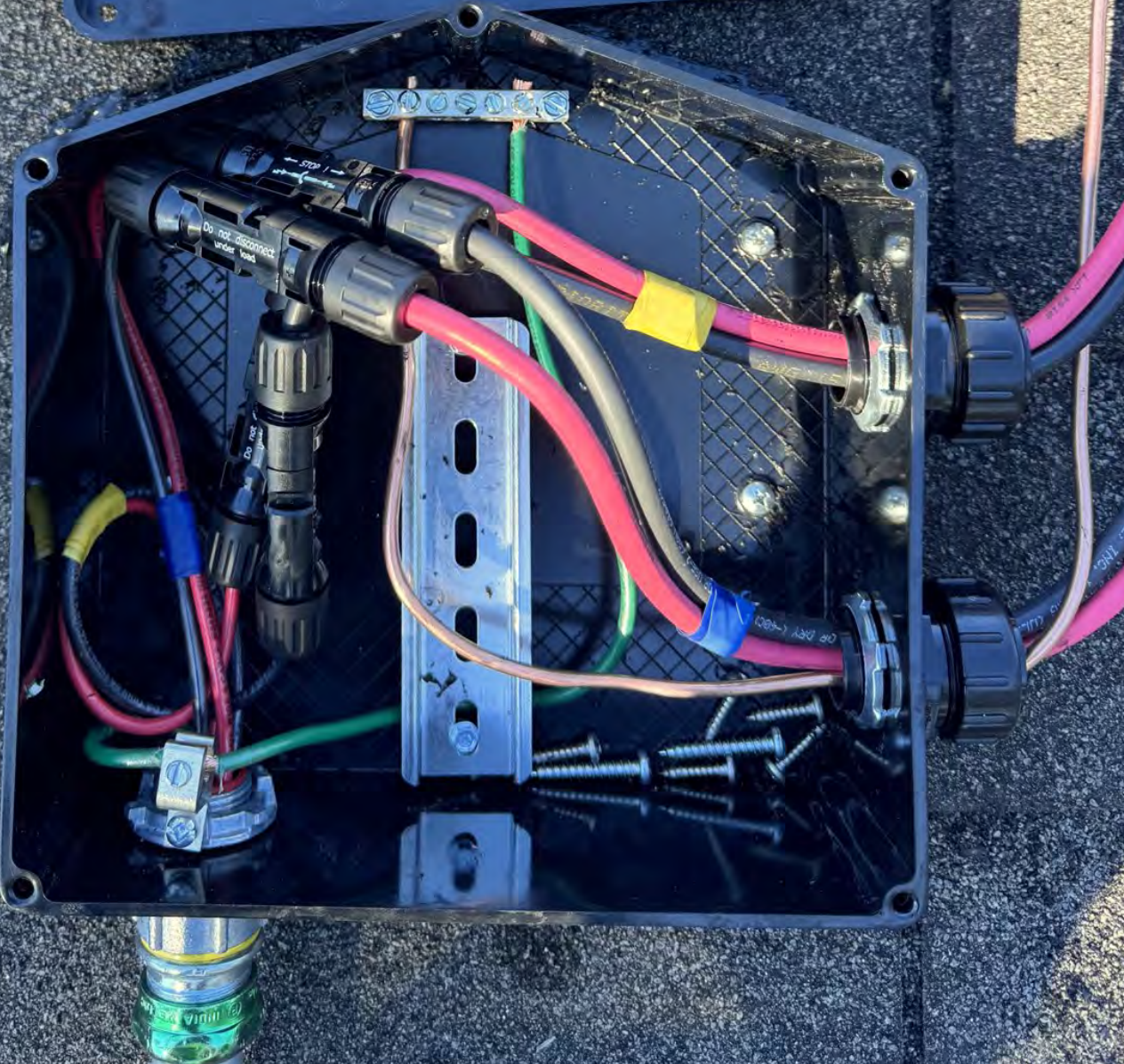
1110
solar edge
18 Panels
14 Rails
LITTLETON, CO



70 Otto RD, Lillington, NC 27546

WARNING!

SEEK TO INSTALLATION MANUAL
FOR WIRING INFORMATION



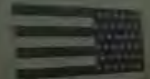


PHOTOVOLTIC POWER SOURCE





(855) 997-1213



FAMILY OWNED
AMERICAN MADE

1:24

LTE 

< Bryson Warner



1/1



18/18



**SERVICE
DISCONNECT**

100500



HEAT
PUMP A/C

SOLAR PV BREAKER
BREAKER IS BACKFED
DO NOT RELOCATE

⚠ DANGER
High-voltage electrical equipment. Shock hazard. Turn off power supplying the equipment before working inside.



⚠ PELIGRO
Alto voltaje eléctrico. Peligro de choque. Desconecte el suministro de energía antes de trabajar dentro del equipo.

CAUTION: SOLAR ELECTRIC SYSTEM CONNECTED



Type FOCUS AXRe-SD
FORM 25 CL200 240V 3W 60Hz TA=30 Kh 7.2

CENTRAL EMC

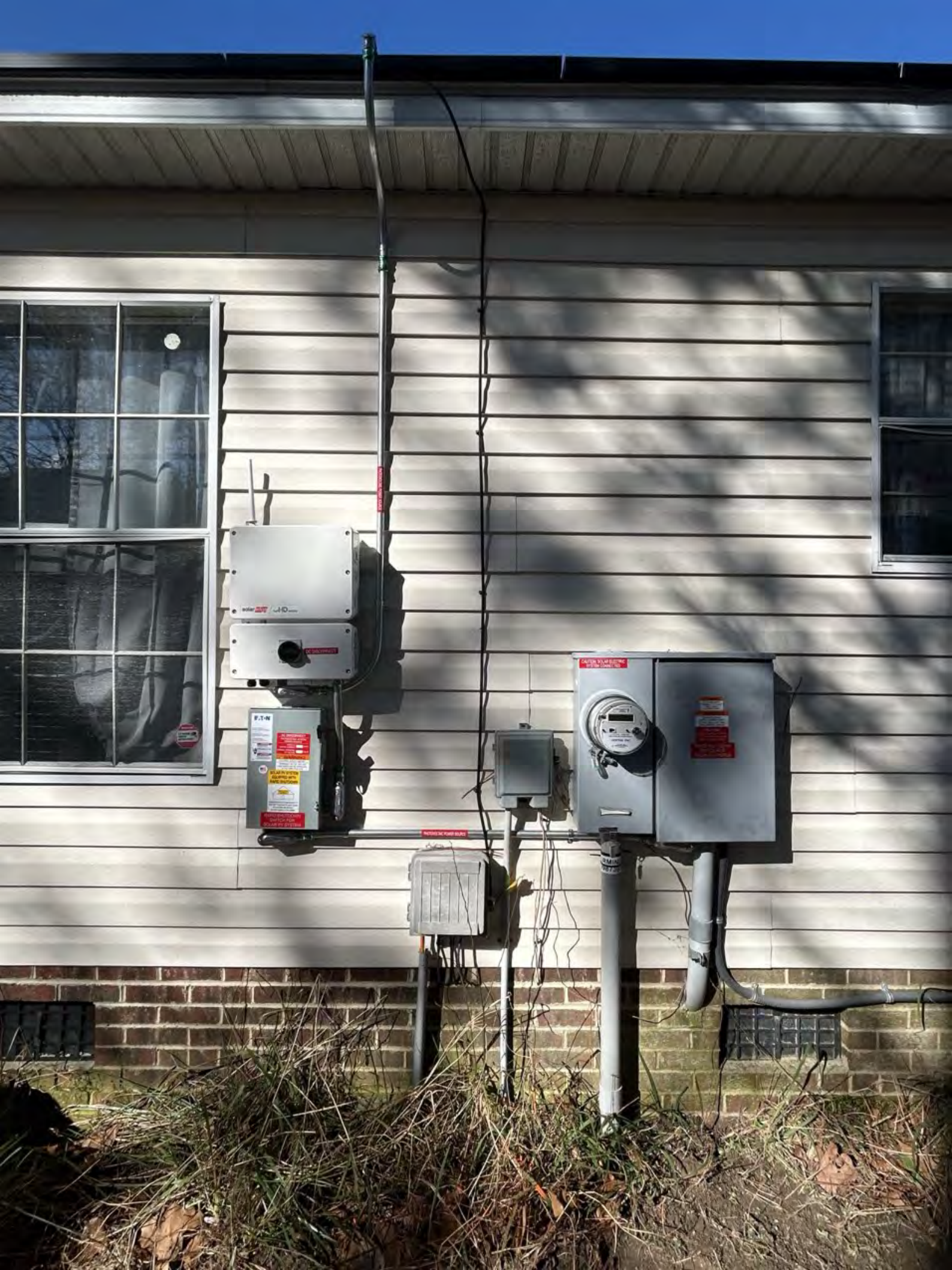
167 087 285
Landis+Coyr

WARNING
DUAL POWER SUPPLY
SOURCES: UTILITY GRID
AND PV SOLAR
ELECTRIC SYSTEM

WARNING
POWER SOURCE
OUTPUT CONNECTION
DO NOT RELOCATE THIS
OVERCURRENT DEVICE

CAUTION:
MULTIPLE SOURCES OF POWER.
THE PV DISCONNECT IS LOCATED
BESIDE THE SERVICE METER

**RAPID SHUTDOWN
SWITCH FOR
SOLAR PV SYSTEM**



Grid Monitoring Completed.



Pairing Completed.

**solar**edge

SN 750B1D3C-D9



Status

Inverter

SN 750B1D3C-D9

Summary



Power

452 W



Voltage

250 Vac



Frequency

60 Hz

P_OK: 18 of 18
Optimizers
Communicating

Server Comm. 

S_OK
Cellular

Status
Production

Power Limit
6 kW

Switch is
On

[Disconnect from device](#)





6F 4
76

6F 5
77

6F 6
78

6F 7
79

6F 8
80

6F 9
81

6F 10
82

6F 11
83







solar**edge**

 HD wave

P I D

ON

OFF



DC DISCONNECT

solar**edge**



General Duty Safety Switch
 Interrupteur de sécurité à usage général
 Interruptor de seguridad de servicio general
 60 A, 240 V~, 60 Hz

Complete ratings inside
 Valeurs nominales complètes à l'intérieur
 Información completa de capacidades en el interior

Further instructions inside
 Autres instructions à l'intérieur
 Instrucciones adicionales en el interior

Made in U.S.A. / Fabriqué aux É.-U. / Hecho en E.U.A.

⚠ DANGER
HAZARDOUS VOLTAGE. WILL CAUSE SEVERE INJURY OR DEATH.
 • Never operate switch with cover open.
 • Turn OFF power ahead of switch before doing any work inside. Replace all parts. Close cover before turning power ON.
TENSION DANGEREUSE. PEUT CAUSER DES BLESSURES GRAVES OU LA MORT.
 • Ne jamais manipuler l'interrupteur lorsque le couvercle est ouvert.
 • Couper l'alimentation en amont de l'interrupteur avant toute intervention. Remplacer les pièces. Fermer le couvercle avant de remettre sous tension.

⚠ PELIGRO
VOLTAJE PELIGROSO. PUEDE CAUSAR HERIDAS SEVERAS O LA MUERTE.
 • Nunca opere el interruptor con la cubierta abierta.
 • Desconectar la alimentación del interruptor antes de trabajar dentro del mismo. Reemplazar todas las partes. Cerrar la cubierta antes de energizar al interruptor.

30-43090



AC DISCONNECT
PHOTOVOLTAIC SYSTEM
POWER SOURCE

RATED AC OUTPUT CURRENT AMPS

NOMINAL OPERATING AC VOLTAGE VOLTS

phdabts.com 03-306

⚠ WARNING
ELECTRIC SHOCK HAZARD
TERMINALS ON THE LINE AND LOAD SIDES MAY BE ENERGIZED IN THE OPEN POSITION

phdabts.com 05-215

SOLAR PV SYSTEM
EQUIPPED WITH
RAPID SHUTDOWN

TURN RAPID SHUTDOWN SWITCH TO THE "OFF" POSITION TO SHUT DOWN PV SYSTEM AND REDUCE SHOCK HAZARD IN THE ARRAY

phdabts.com 06-107

RAPID SHUTDOWN SWITCH FOR SOLAR PV SYSTEM

phdabts.com 03-306

ON

OFF



solar edge SE6000H - US
**Grid Support Utility Interactive
 Non-Isolated Photovoltaic Inverter**
 Operating Voltage Range 270 - 480Vdc
 Max Input Current 15.5Amps
 Max Continuous Output Power 5000Wac @ 208V 4000Wac @ 240V
 Voltage Min - Nom - Max 193 - 208 - 230Vac
 211 - 240 - 254Vac
 Max Continuous Output Current 24Aac @ 208V 25Aac @ 240V
 Max Output Fault Current 72Aac
 Max Utility Backfeed Current 9Aac
 Frequency Min - Nom - Max 59.3 - 60.0 - 60.5Hz
 Output Power Factor +/- 0.95 - 1
 Max Ambient Temperature 60 C
 Enclosure IP65 / Type III
 With integrated ground fault protection per NEC 680.35 (C)
 Type I Photovoltaic Arc-Fault Circuit-Protector
 Wi-Fi Password: Ya8mAJWJ
 Activation: 0p8B WaoS m6ZY 8iYW +1N4 0Bb9 CAk=
 WiFi MAC: 84:D6:C5:80:F8:D7
 ZigBee MAC:



PN: SE6000H - USSNBBL14
 SN: SV3423 - 0750B1D3C - D9

solar edge
 PHOTOVOLTAIC RAPID
 SHUTDOWN SYSTEM



solar edge 750B1D3C - D9
 ETL LISTED
 CONFORMS TO
 ANSI/UL 1741
 CERTIFIED TO
 CAN/CSA
 C22.2 NO 107

Intertek
 4004590


Contains FCC ID: 2AGPT-PLNX, IC: 20914-PNLX. The enclosed device complies with part 15 of the FCC Rules. Operation is subject to the following two conditions:
 (1) this device may not cause harmful interference and
 (2) this device must accept any interference received, including interference that may cause undesired operation.
 PATENT MARKING NOTICE SEE www.solaredge.com/groups/patent Made in Vietnam



BAT+
BAT-
PV+
PV-

13
ECONOMY 3-POSITION
ON
ECONOMY 3-POSITION
AC21-10A
50-60V
50-60Hz
OFF
ON
IP20
Look
WIRE TO 60°C
Made in Australia

MOD 2
TER 1
ON/OFF
LED indicators

L2 L1

polar edge

L1 L2

2nd line

Backup indicator

**SERVICE
DISCONNECT**
4740031A

100504



HEAT
PUMP A/C

SOLAR PV BREAKER
BREAKER IS BACKFED
DO NOT RELOCATE

DANGER PELIGRO

CAUTION: SOLAR ELECTRIC SYSTEM CONNECTED

GRIDSTREAM RF
WISCONSIN
167 087 285
CENTRAL EMC
167 087 285
Lansdale, Pa.

FOCUS AXRe-SD
FORM 25 CL200 240V 3W 60Hz TA=30 Kh 7.3

09

WARNING
DUAL POWER SUPPLY
SOURCES: UTILITY GRID
AND PV SOLAR
ELECTRIC SYSTEM

WARNING
POWER SOURCE
OUTPUT CONNECTION
DO NOT RELOCATE THIS
OVERCURRENT DEVICE

CAUTION:
MULTIPLE SOURCES OF POWER
THE PV DISCONNECT IS LOCATED
BESIDE THE SERVICE METER

**RAPID SHUTDOWN
SWITCH FOR
SOLAR PV SYSTEM**

MNIX
87308

SIEMENS



CIRCUIT BREAKER
2 POLE UNIT

ISSUE NO. 148-5556

LISTED

120/240V

50/60 Hz

30°C

Interrupting Rating: 22.5kA @ 120V

Symmetrical: 120/240V

75°C Wire / 100°C

Wiring Diagrams: 100-1000

USE ONLY IN LISTED ENCLOSURES

SIEMENS ELECTRIC DIVISION

SALEM, MASSACHUSETTS, U.S.A.

ASSEMBLED IN MEXICO

10

OFF

30

CU/AL 40/75 °C min
AMP 10-25, 30-35
AWG 14-3, 12-2
UL

30

2 Pole Type QP
Interrupting Rating
MAXIMUM SYM AMPS
10,000 120/240 V ~
MCR Type, 40 °C
Listed by
SIEMENS

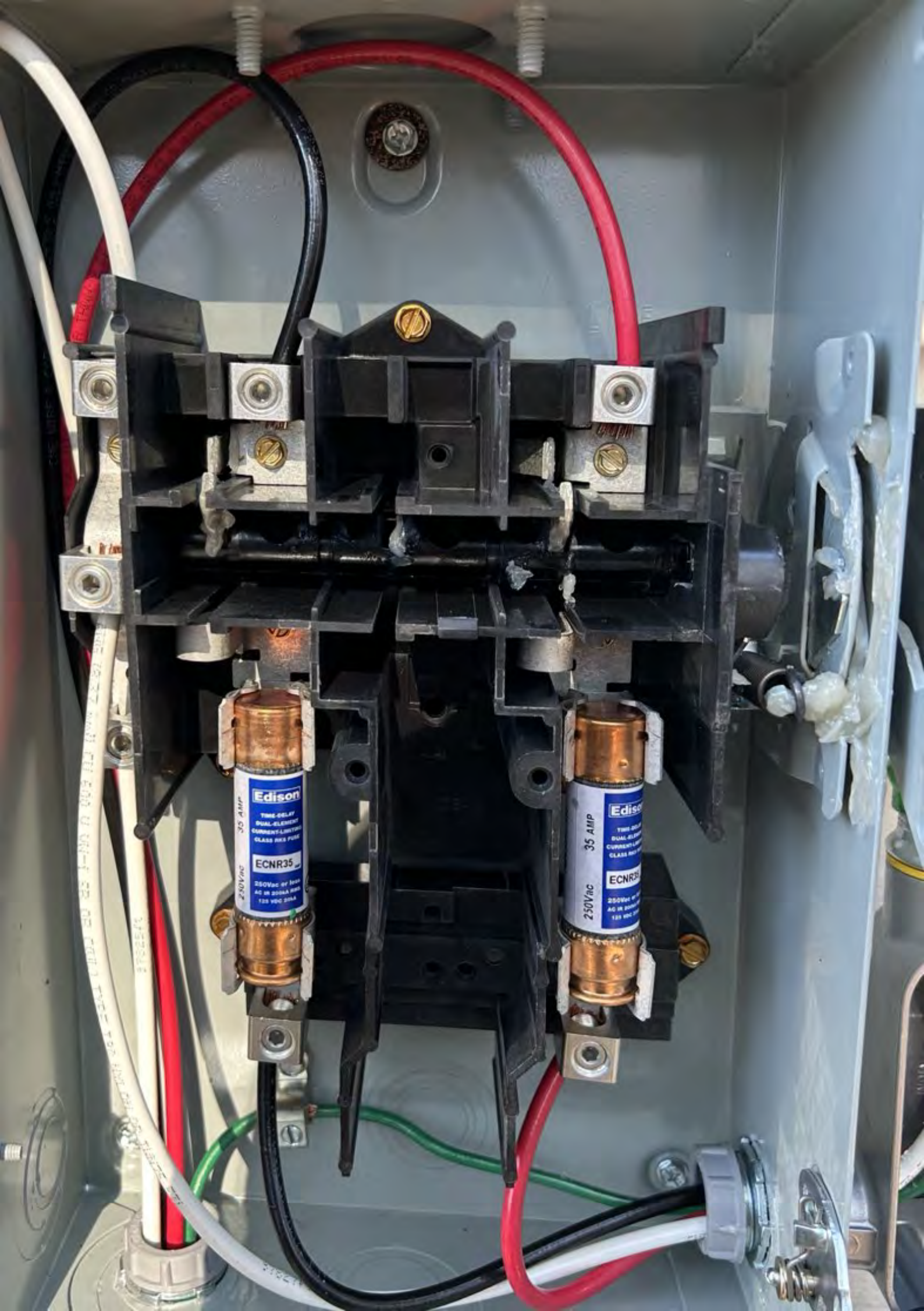
35

CU/AL 60/75 °C min
CONDUCTOR AWG
AWG 14-8
8-10/30 T 35
UL

35

2 Pole Type QP
Interrupting Rating
MAXIMUM SYM AMPS
10,000 120/240 V ~
MCR Type, 40 °C
Listed by
SIEMENS





Edison
TIME-DELAY
DUAL-ELEMENT
CURRENT-LIMITING
GLASS BODY FUSE
ECNR35
35 AMP
250V ac
AC IN 2500VA
125 VDC 250A

Edison
TIME-DELAY
DUAL-ELEMENT
CURRENT-LIMITING
GLASS BODY FUSE
ECNR35
35 AMP
250V ac
AC IN 2500VA
125 VDC 250A



TYPE T90 NYLON OR TWN75 FT1

ROHS

E E102470 S (UL) MFW OR THHN OR THWN-2 OR AWM OR

NYLON OR TWBEST

CME WIRE & CABLE E102



solaredge

SN 750B1D3C-D9



Power
628 W

Energy
57 Wh

Battery

StorEdge SN 63081B05

Communication
Connected

Type
SE Energy Bank

State
Standby

Power
0 W

SOE
18.01%

Home Backup Interface

SN 6302954A-44

State
On-Grid

Communication
OK



Commissioning



Disconnect from device





Communication

Ethernet No Cable	RS485-1 Modbus 3 of 3	RS485-2 SE Follower
Cellular AT&T	Wi-Fi NC	Home Network 1 device

Inverter Energy

Today 1.74 kWh	This Month 34.09 kWh	This Year 308.27 kWh
--------------------------	--------------------------------	--------------------------------

Total
310.02 kWh

Meters

Disconnect from device



Production Meter

SN 2496cc4c

RS485-1
Modbus ID #1

Status
OK

Power
0 W

Energy
2.84 kWh

1.74 kWh

34.09 kWh

308.27 kWh

Total

310.02 kWh

Meters

Production Meter

SN 2496cc4c

RS485-1

Modbus ID #1

Status

OK

Power

0 W

Energy



DC Voltage
231 Vdc

Isolation
NA

Temp.
95° F

AFCI
Manual Reconnect

Communication

Ethernet
No Cable

RS485-1
Modbus
3 of 3

RS485-2
SE Follower

Cellular
AT&T



Wi-Fi
NC

Home Network
1 device

Inverter Energy

Disconnect from device





Inverter

SN 750B1D3C-D9

Summary



Power
0 W



Voltage
248 Vac



Frequency
60 Hz

P_OK: 18 of 18

Optimizers Communicating

Server Comm.

S_OK
Cellular



Status
Idle

Power Limit
6 kW

Switch is
On

Cos Phi
-

Q
0 VAR

Country
US 240V

DC Voltage

Disconnect from device





Status

Site

Production
0 W

Limit
6 kW

Inverters
1 of 1

Inverter

SN 750B1D3C-D9

Summary



Power
0 W



Voltage
248 Vac



Frequency
60 Hz

P_OK: 18 of 18

Optimizers Communicating

Server Comm.

S_OK
Cellular



Disconnect from device





Home Battery Settings



18%

Idle

0 W

You have successfully completed the Home Battery installation!

You are all set.

Done

About Home Battery Settings



Energy Control Mode

Maximum Self-Consumption



Backup Enable



Backup Reserved

20

%

Fast Transition To Backup





Home Battery Self Test ()

About Home Battery Self Test



Home Battery Errors Troubleshooting



Self Test Success

Device

Internal

Discharge

Charge

Inverter : SN 750B1D3C



Home Battery

SN 63081B05



Continue

Disconnect from device





Inverter

- ✓ DSP2 2.100.1412
- ✓ Energy Net 1.0.20

Meter

- ✓ Meter 0.79.0
- ✓ Meter 0.79.0

StorEdge

- ✓ SEDG Battery Comm. 1.1.29
- ✓ SEDG Battery DCDC 1.0.28
- ✓ SEDG Battery BMS 1.0.49

Backup interface

- ✓ Backup Interface 1.1.6

Continue

Controller

Firmware

Inverter

✓	CPU	4.19.39
✓	DSP1	1.100.1631
✓	DSP2	2.100.1412
✓	Energy Net	1.0.20

Meter



solar charge

Electrical panel

Window

Electrical panel

Electrical panel

Electrical panel

000029

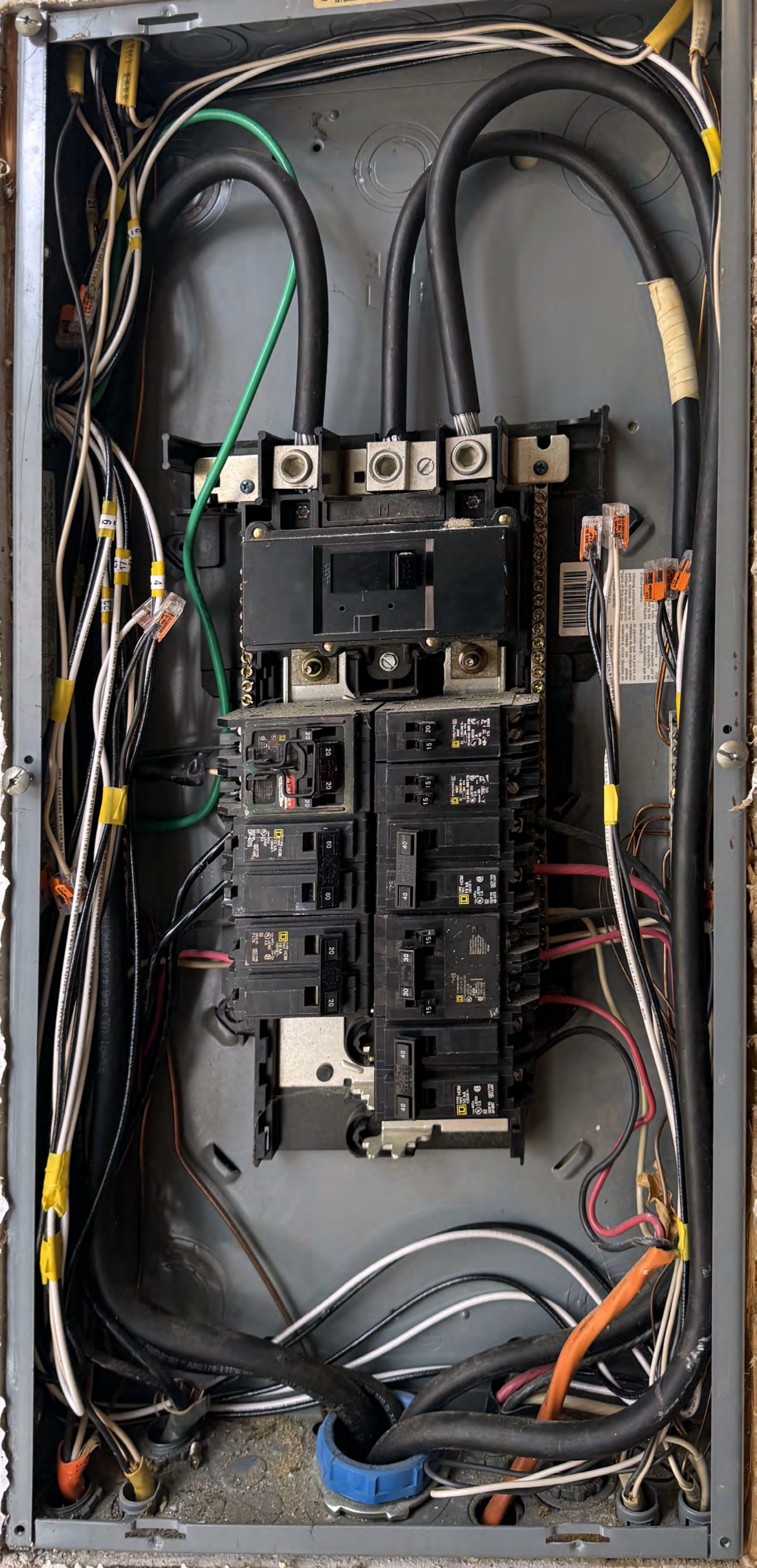




⚠ WARNING

DUAL POWER SUPPLY
SOURCES: UTILITY GRID
AND PV SOLAR
ELECTRIC SYSTEM





**SERVICE
DISCONNECT**
4742031A



HEAT
PUMP A/C

SOLAR PV BREAKER
BREAKER IS BACKFED
DO NOT RELOCATE
pvbiba.com 03-225

⚠ DANGER
Hazardous Voltage.
Will cause death, serious
injury or substantial
property damage.
Turn off power supplying this
equipment before working inside.



⚠ PELIGRO
Voltaje peligroso. Causará la
muerte, lesiones graves o daño
substantial a la propiedad.
Desconecte el suministro de
energía a este equipo antes de
trabajar en su interior.

**CAUTION: SOLAR ELECTRIC
SYSTEM CONNECTED**



WARNING
DUAL POWER SUPPLY
SOURCES: UTILITY GRID
AND PV SOLAR
ELECTRIC SYSTEM

WARNING
POWER SOURCE
OUTPUT CONNECTION
DO NOT RELOCATE THIS
OVERCURRENT DEVICE

CAUTION:
MULTIPLE SOURCES OF POWER
THE PV DISCONNECT IS LOCATED
BESIDE THE SERVICE METER

**RAPID SHUTDOWN
SWITCH FOR
SOLAR PV SYSTEM**



LINE

SNAP-IN
2ND

SNAP-IN
2ND

REINSTALL AFTER WIRING

REINSTATE DESPUÉS DEL CABLEADO

REINSTALLER APRÈS L'INSTALLATION ÉLECTRIQUE

INSTALL 1ST

Edison
TIME-DELAY
DUAL-ELEMENT
CURRENT-LIMITING
CLASS RK5 FUSE
ECNR35
35 AMP
250V ac
250Vac or less
AC IN 200kA RMS
125 VDC 20kA

Edison
TIME-DELAY
DUAL-ELEMENT
CURRENT-LIMITING
CLASS RK5 FUSE
ECNR35
35 AMP
250V ac
250Vac or less
AC IN 200kA RMS
125 VDC 20kA



solar edge

solar edge

12.5kV

12.5kV

Backup power
www.solar-edge.com




00023



solar**edge**

000029

solar**edge**
www.solar-edge.com

 DANGER	 PELIGRO	 DANGER
HAZARDOUS VOLTAGE. WILL CAUSE SEVERE INJURY OR DEATH.	VOLTAJE PELIGROSO. PUEDE CAUSAR HERIDAS SEVERAS O LA MUERTE.	TENSION DANGEREUSE. PEUT CAUSER DES BLESSURES GRAVES OU LA MORT.
Never operate switch with cover open.	Nunca opere el interruptor con la cubierta abierta.	Ne jamais manoeuvrer l'interrupteur lorsque le couvercle est ouvert.
If fused, turn OFF switch before removing or installing fuse.	Si el interruptor usa fusible, baje su palanca a la posición fuere "OFF" antes de retirar o instalar fusibles.	Si est muni d'un fusible, mettre l'interrupteur hors circuit (OFF) avant d'enlever ou d'installer un fusible.
Always use a properly rated voltage sensing device at all line and load side fuse clips (if fused) or load side terminals (if non-fused) to confirm switch is OFF.	Mida el voltaje con un dispositivo de medición adecuado en lado de carga de los clips de fusibles (si los usa) o en las terminales de carga (cuando no usa fusibles) para comprobar que el interruptor está desenergizado.	Toujours utiliser un dispositif de détection de la tension dont les valeurs nominales sont appropriées, et le côté charge du porte-fusible (muni d'un fusible) ou les bornes côté charge (sans fusible) pour confirmer que l'interrupteur est hors circuit (OFF).
Turn OFF power ahead of switch before doing any work inside. Replace all parts. Close cover before turning power ON.	Desconectar la alimentación del interruptor antes de trabajar dentro del mismo. Reemplazar todas las partes. Cerrar la cubierta antes de energizar el interruptor.	Couper l'alimentation en amont de l'interrupteur avant toute intervention. Remplacer les pièces. Fermer le couvercle avant de remettre sous tension.

DG222NRB



Series B
GENERAL DUTY SAFETY SWITCH
Type 3R Enclosure - Rainproof

TERMINALS SUITABLE FOR AL-CU WIRE.

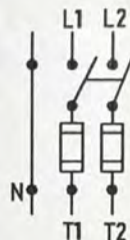
INTERRUPTOR DE SEGURIDAD DE SERVICIO GENERAL
Gabinete NEMA 3R - A Prueba De Lluvia

TERMINALES ADECUADAS PARA CONDUCTORES DE AL-CU.

INTERRUPTEUR DE SÉCURITÉ À USAGE GÉNÉRAL
Enveloppe De Type 3R - A L'épreuve De La Pluie

BORNES CONVENANT POUR CONDUCTEURS AL-CU.

60 Amperes 120/240, 240, 127/220 V ~ 60Hz 3W S/N, 3H N/S, 3F N/S



Horsepower Ratings	KW(Caballos de potencia)		Régimes "Horsepower"		
	1 Phase/1 Fase		3 Phase/3 Fase *		2 Pole/2 Polo...
Volts / Tension / Voltaje	Std. / Est	Max.	Std. / Est	Max.	
120 / 127 ~	1 1/2 (1,119)	3 (2,238)	3 (2,238)	7 1/2 (5,60)	-
240 ~	3 (2,238)	10 (7,46)	7 1/2 (5,60)	15 (11,19)	-

*For grounded B Phase systems only.

Maximum fuse size 60A

The starting current of motors of more than the standard horsepower ratings may require the use of fuses with appropriate time-delay characteristics. Continuous load current not to exceed 80% of the rating of fuses employed in other than motor circuits.

Suitable for use as service equipment.

Suitable for use on a circuit capable of delivering not more than 100,000 RMS symmetrical amperes, 240 V - maximum, when Class R fuses are used. Fuse kit DS16FK is required for R fuses.

DANGER-Unless Class R fuses are used, this switch may present a risk of fire and personal injury if installed on circuits capable of delivering more than 10,000 RMS symmetrical amperes.

When used with Class K or H fuses, suitable for use on a circuit capable of delivering not more than 10,000 RMS symmetrical amperes, 240 volts maximum.

Experience has shown that renewable fuses can cause overheating problems and thus the use of renewable fuses is not recommended.

Use 60°C or 75°C wire.

Lug torque / Hex across flats / 5/32" / 100 LB. - In

Wire range

14 - 1/0 AWG, 2.1 a 53.5 mm² AL - CU

Accessories

Install per instructions supplied with kit.

R fuse kit DS16FK

Ground lug kit DG030GB

Neutral kit DG100NB

3/4" (19.05mm) Hub size DS075H1

1" (25.40mm) Hub size DS100H1

1 1/8" (31.75mm) Hub size DS125H1

1 1/2" (38.10mm) Hub size DS150H1

2" (50.80mm) Hub size DS200H1

Accessoires

Instalar de acuerdo a instrucciones incluidas en los accesorios.

Juego adaptador para fusible tipo "R" DS16FK

Juego de partes para terminal de tierra DG030GB

Juego de neutro DG100NB

3/4" (19.05mm) Tamaño de cople DS075H1

1" (25.40mm) Tamaño de cople DS100H1

1 1/8" (31.75mm) Tamaño de cople DS125H1

1 1/2" (38.10mm) Tamaño de cople DS150H1

2" (50.80mm) Tamaño de cople DS200H1

Accessoires

Installer conformément aux directives fournies avec l'ensemble.

Ensemble pour fusible R DS16FK

Ensemble de bornes de MALT DG030GB

Ensemble de neutres DG100NB

3/4" (19.05mm) Calibre des manchons DS075H1

1" (25.40mm) Calibre des manchons DS100H1

1 1/8" (31.75mm) Calibre des manchons DS125H1

1 1/2" (38.10mm) Calibre des manchons DS150H1

2" (50.80mm) Calibre des manchons DS200H1

*Sólo para sistemas con falla a tierra en fase B.

Adecuado para usarse como equipo de acometida

Tamaño máximo de fusible de 60 amperios

La corriente de arranque de motores con capacidad mayor a los caballos de potencia estándar puede requerir del uso de fusibles con características de retardo de tiempo apropiadas.

La corriente de carga continua no debe exceder el 80% de la capacidad del fusible empleado, con excepción de los circuitos de motores.

Adecuado para usarse en circuitos capaces de entregar no más de 100 000 A RCM simétricos, con 240 V- máximo, cuando se utilizan fusibles clase R. El juego adaptador de fusibles DS16FK se requiere para fusibles clase R.

PELIGRO-a menos que se utilicen fusibles clase R, este interruptor puede presentar riesgos de incendio y daño personal si es instalado en circuitos con capacidad de entregar más de 10 000 A RCM simétricos.

Cuando se utiliza con fusibles clase K o H, es adecuado para usarse en circuitos con capacidad de entregar no más de 10 000 A RCM simétricos, con 240 V- máximo.

La experiencia muestra que los fusibles renovables pueden causar problemas de sobrecalentamiento, por lo tanto, el uso de fusibles renovables no es recomendable.

Usar conductores para 60°C ó 75°C.

Par de apriete de terminales / Tornillo de cabeza hexagonal / 3.97 mm / 11.3 N.m

Rango de la sección transversal del conductor

14 - 1/0 AWG, 2.1 a 53.5 mm² AL - CU

*Seulement pour des systèmes de phase B MALT.

Approprié comme équipement d'entrée de service

Calibre maximum du fusible 60A

L'intensité de démarrage des moteurs plus élevée que pour les "horsepower" standards peut exiger l'utilisation de fusibles ayant des caractéristiques de temporisation appropriées.

Toute charge continue ne devra pas excéder 80% du calibre des fusibles utilisés sauf s'il s'agit de circuits de moteurs.

Convient à un circuit de 100,000 ampères efficaces symétriques au plus, 240 V - maximum, lorsque des fusibles de classe R sont utilisés.

Ensemble de fusible DS16FK requis pour fusibles R.

DANGER-A moins d'utiliser des fusibles de classe R, cet interrupteur peut présenter des risques d'incendie et de blessures corporelles s'il est installé dans un circuit de plus 10,000 ampères efficaces symétriques.

Si utilisé avec des fusible K ou H, l'interrupteur sera approprié pour utilisation sur un circuit ne délivrant pas plus de 10,000 ampères RMS symétriques, 240V maximum.

L'expérience démontre que l'utilisation de fusibles renouvelables peut causer des problèmes de surchauffe et, par conséquent, ces fusibles ne sont pas recommandés.

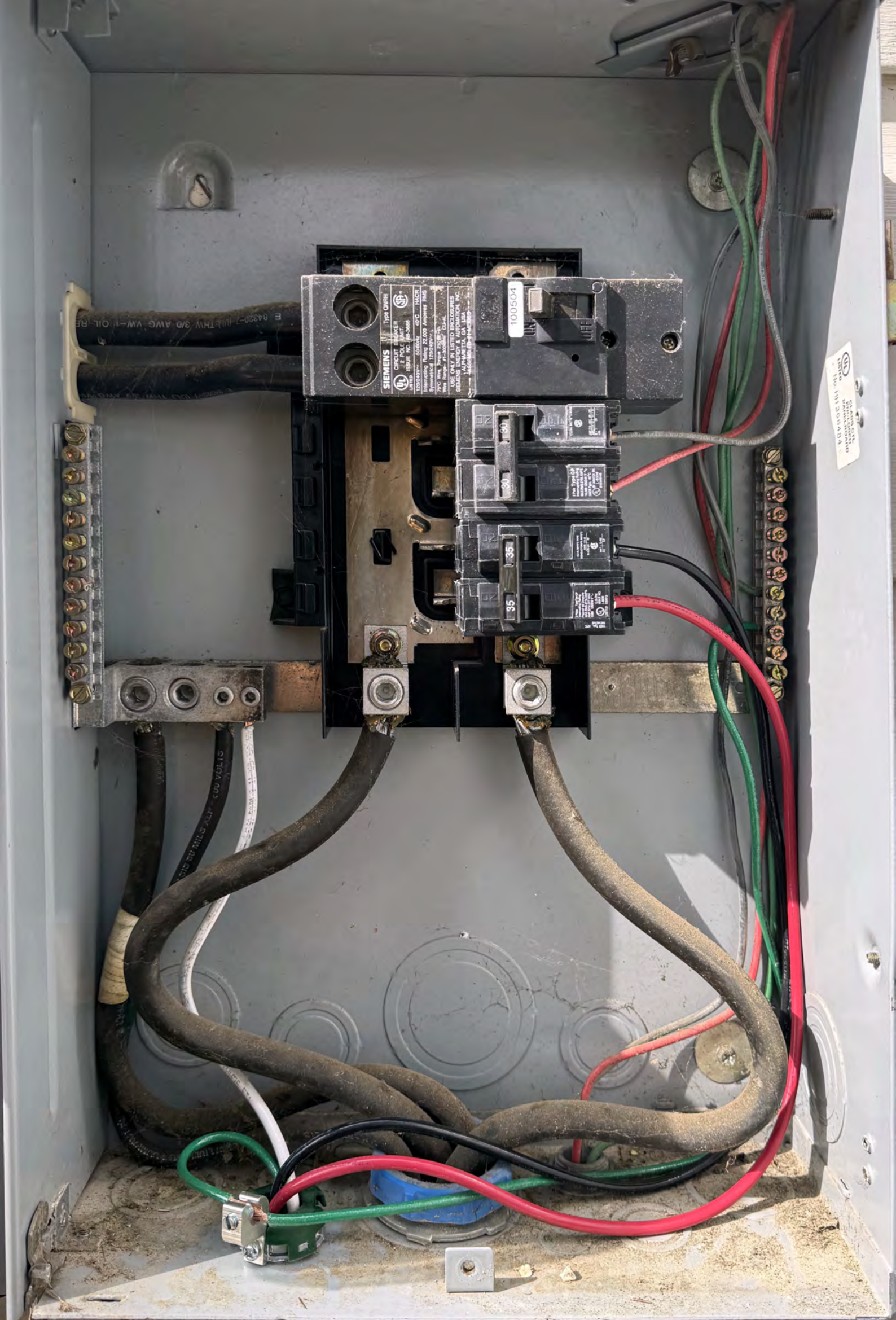
Utiliser conducteur 60°C ou 75°C.

Torque aux bornes / Vis à tête six pans / 5/32" / 100Lb. - Po.

Plage de conducteurs

14 - 1/0 AWG, 2.1 a 53.5 mm² AL - CU

PUB53724



WAF
Energy
Always



Contains FCC ID: ZADPTENET, IC: 20916-ENET.
The enclosed device complies with Part 15 of the FCC Rules.
Operation is subject to the following two conditions:
(1) This device may not cause harmful interference and
(2) This device must accept any interference received,
including interference that may cause undesired operation.

BATT
+
-



INV1

CHNT

NB1-63
C40

5000A
50/60Hz
480V

load

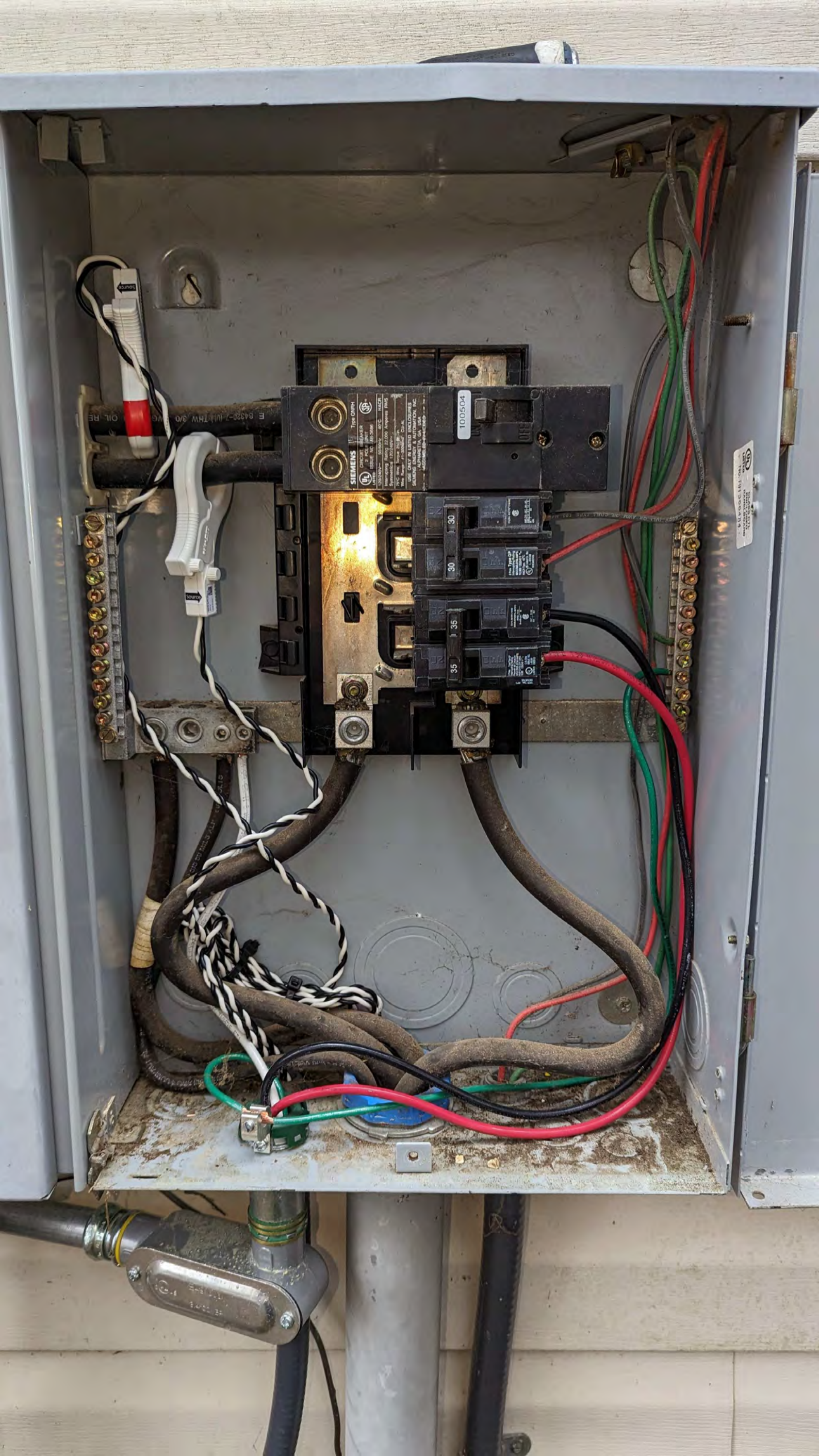
Cu only

MOD 2
TER 1
UP

CT
L1
CT
L2
N/A

L1-CT





SIEMENS Type G47H
CHIEF ENGINEER
CHIEF ELECTRICIAN
ISSUE NO. 100-3486
1005040-1 05/87 60°C 1100V
Supplying 1005040-2000 Ampere FUSES
75°C (See Page 200) 100504
MADE IN THE U.S.A.
SIEMENS ELECTRIC & AUTOMATION, INC.
2000 WEST 10TH AVENUE
MINNETONKA, MN 55342

100504

30

30

35

35

OIL RES.

E 04320-7 10/1 THW 3/0

Source

SIEMENS ELECTRIC & AUTOMATION, INC.
MINNETONKA, MN 55342



SERVICE
DISCONNECT



HEAT
PUMP A/C

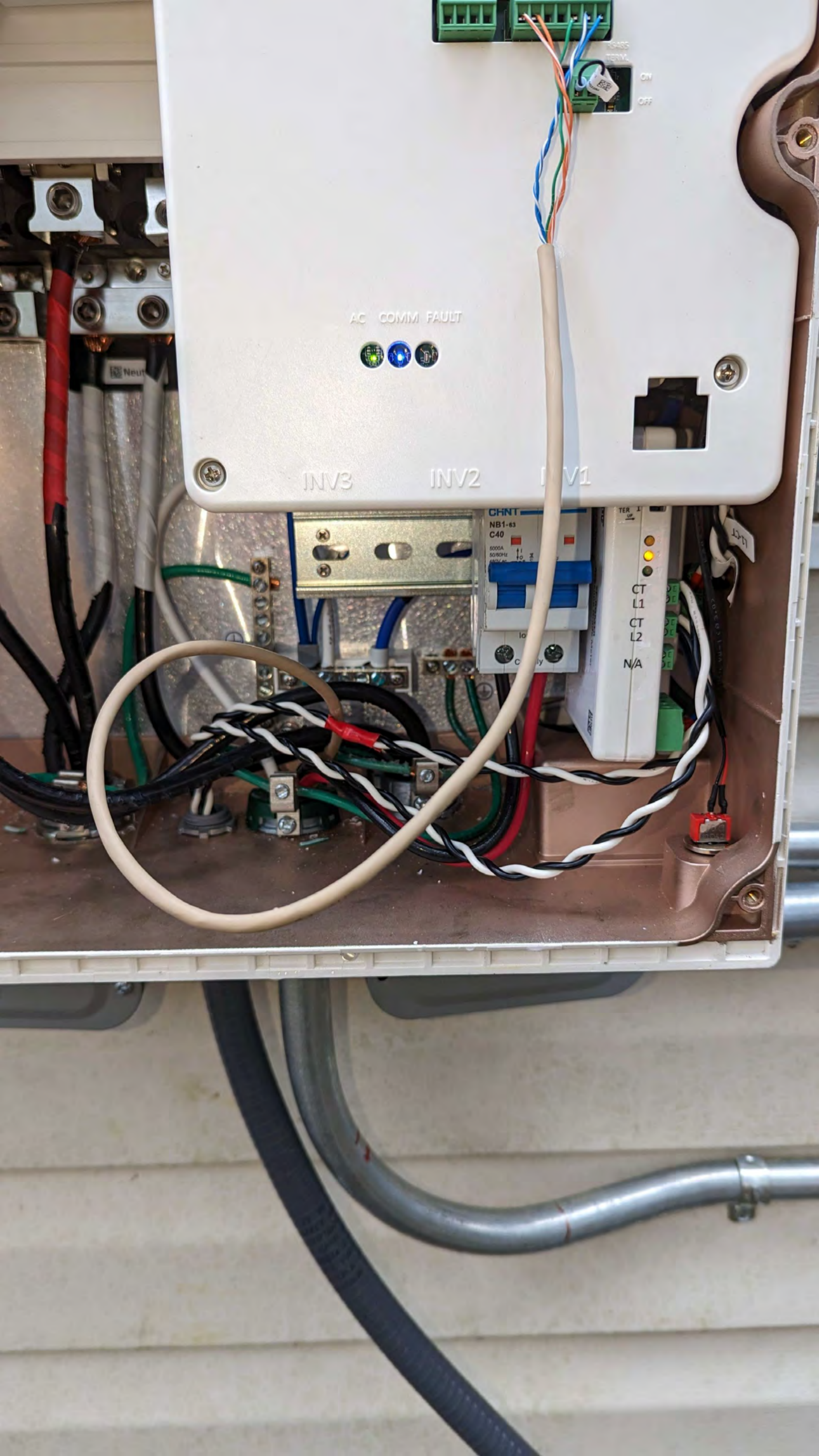
SOLAR PV BREAKER
BREAKER IS BACKFED
DO NOT RELOCATE

⚠ DANGER
High-voltage voltage.
Will cause death, serious
injury or substantial
property damage.
Turn off power supplying the
equipment before working inside.



⚠ PELIGRO
Alta tensión eléctrica. Causará la
muerte, lesiones graves o daño
substantial a la propiedad.
Desconecte el suministro de
energía a este equipo antes de
trabajar en su interior.

MINIX
87308



AC COMM FAULT



INV3

INV2

INV1

CHNT

NB1-63
C40

6000A
50/60Hz
6kVAc

TER 1

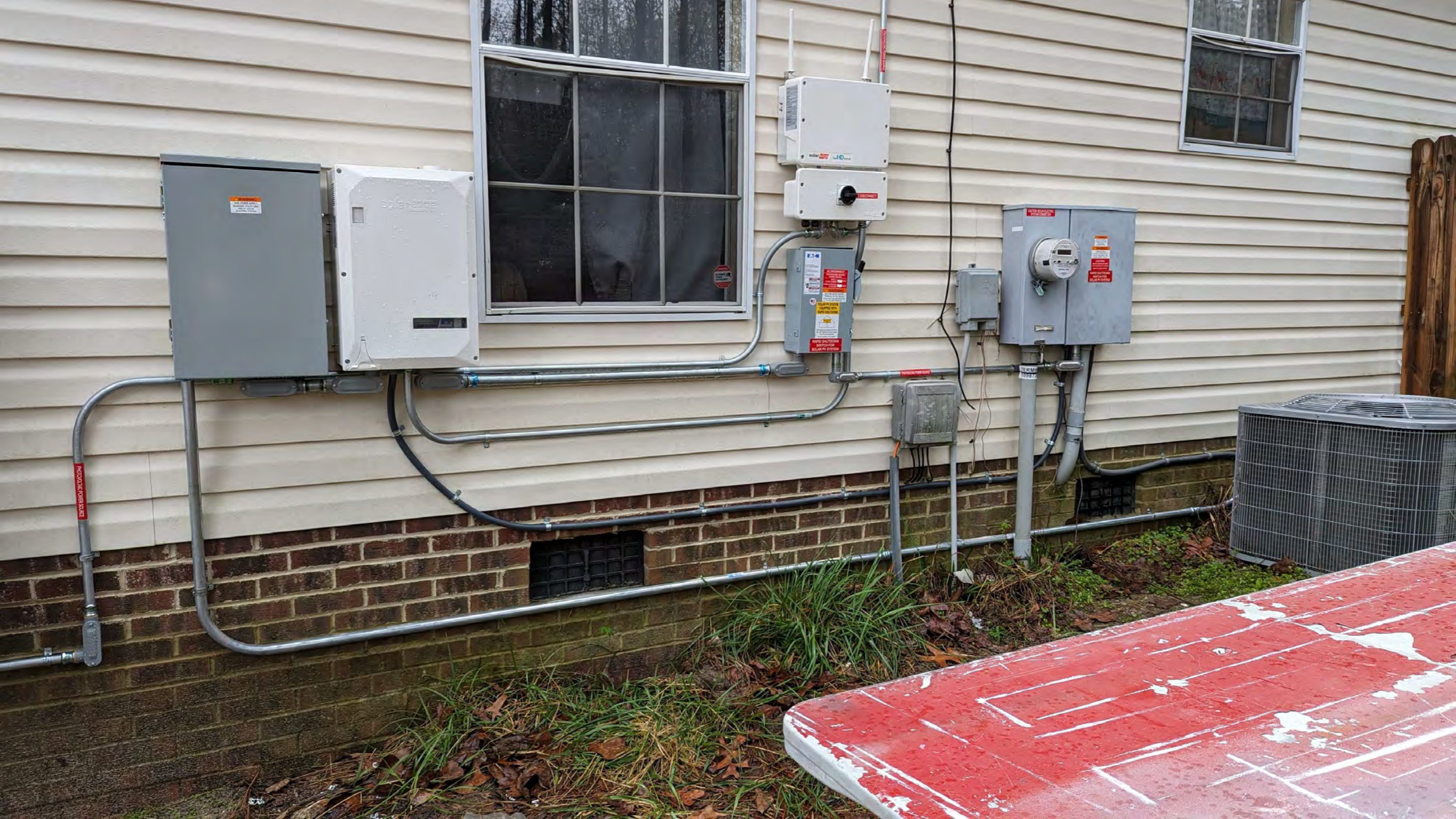
CT L1

CT L2

N/A

Neut

L-CT





solar360 HD

DC DISCONNECT

E-T-N
DC DISCONNECT
EQUIPPED WITH
Rapid Shutdown
Switch for
Solar PV System

CAUTION: SOLAR ELECTRIC SYSTEM CONNECTED
WARNING
CAUTION: See the location of Rapid Shutdown Switch for Solar PV System

INDUSTRIAL POWER DEVICE

TERMINAL
98730