





Crop



MAX SIZE COND. #6-A



Do Not
Remove

180B2E82-D3



SolarEdge Technologies Ltd.
SolarEdge Technologies GmbH/
Werner-Eckert-Straße 6/81829 Munich/Germany



CAUTION

HOT SURFACES-TO REDUCE THE RISK OF BURNS-DO NOT TOUCH.
RISK OF ELECTRIC SHOCK-WHEN THE PHOTOVOLTAIC ARRAY IS EXPOSED TO LIGHT, IT SUPPLIES A DC VOLTAGE TO EQUIPMENT. COVER PV MODULE WITH OPAQUE MATERIAL BEFORE CONNECTING OR DISCONNECTING THIS OPTIMIZER.
DURING FAULT, ZERO CURRENT IS SOURCED INTO DC ARRAY BY CONVERTER.

SolarEdge Technologies Ltd.
Power Optimizer

Solaredge Technologies GmbH/
Werner-Eckert-Straße 6/81829
Munich/Germany

WARNING ELECTRIC SHOCK HAZARD. THE DC CONDUCTORS OF THIS PHOTOVOLTAIC SYSTEM ARE UNGROUNDED AND MAY BE ENERGIZED.

AVERTISSEMENT

RISQUE DE CHOC ELECTRIQUE: QUAND LE CHAMP PHOTOVOLTAIQUE EST EXPOSE A LA LUMIERE, UNE TENSION CC EST FOURNIE A CET EQUIPEMENT.
SURFACES CHAUDES: NE PAS TOUCHER, AFIN DE REDUIRE LES RISQUES DE BRULURES LE COURANT DE RETOUR INJECTE PAR LE CONVERTISSEUR EN CAS DE DEFAILLANCE DANS LE MODULE PV EST TOUJOURS NUL.

STRING

MODULE

CAUTION
HOT SURFACES-TO REDUCE THE RISK OF BURNS-DO NOT TOUCH. RISK OF ELECTRIC SHOCK-WHEN THE PHOTOVOLTAIC ARRAY IS EXPOSED TO LIGHT, IT SUPPLIES A DC VOLTAGE TO EQUIPMENT. COVER PV MODULE WITH OPAQUE MATERIAL BEFORE CONNECTING OR DISCONNECTING THIS OPTIMIZER. DURING FAULT, ZERO CURRENT IS SOURCED INTO DC ARRAY BY CONVERTER.

SolarEdge Technologies Ltd
Power Optimizer
Solaredge Technologies GmbH
Werner-Eckert-Strasse 6/81829
Munich/Germany

WARNING ELECTRIC SHOCK HAZARD. THE DC CONDUCTORS OF THIS PHOTOVOLTAIC SYSTEM ARE UNGROUNDED AND MAY BE ENERGIZED.



AVERTISSEMENT

RISQUE DE CHOC ELECTRIQUE: QUAND LE CHAMP PHOTOVOTAIQUE EST EXPOSE A LA LUMIERE, UNE TENSION CC EST FOURNIE A CET EQUIPEMENT. SURFACES CHAUDES: NE PAS TOUCHER, AFIN DE REDUIRE LES RISQUES DE BRULURES LE COURANT DE RETOUR INJECTE PAR LE CONVERTISSEUR EN CAS DE DEFAILLANCE DANS LE MODULE PV EST TOUJOURS NUL.

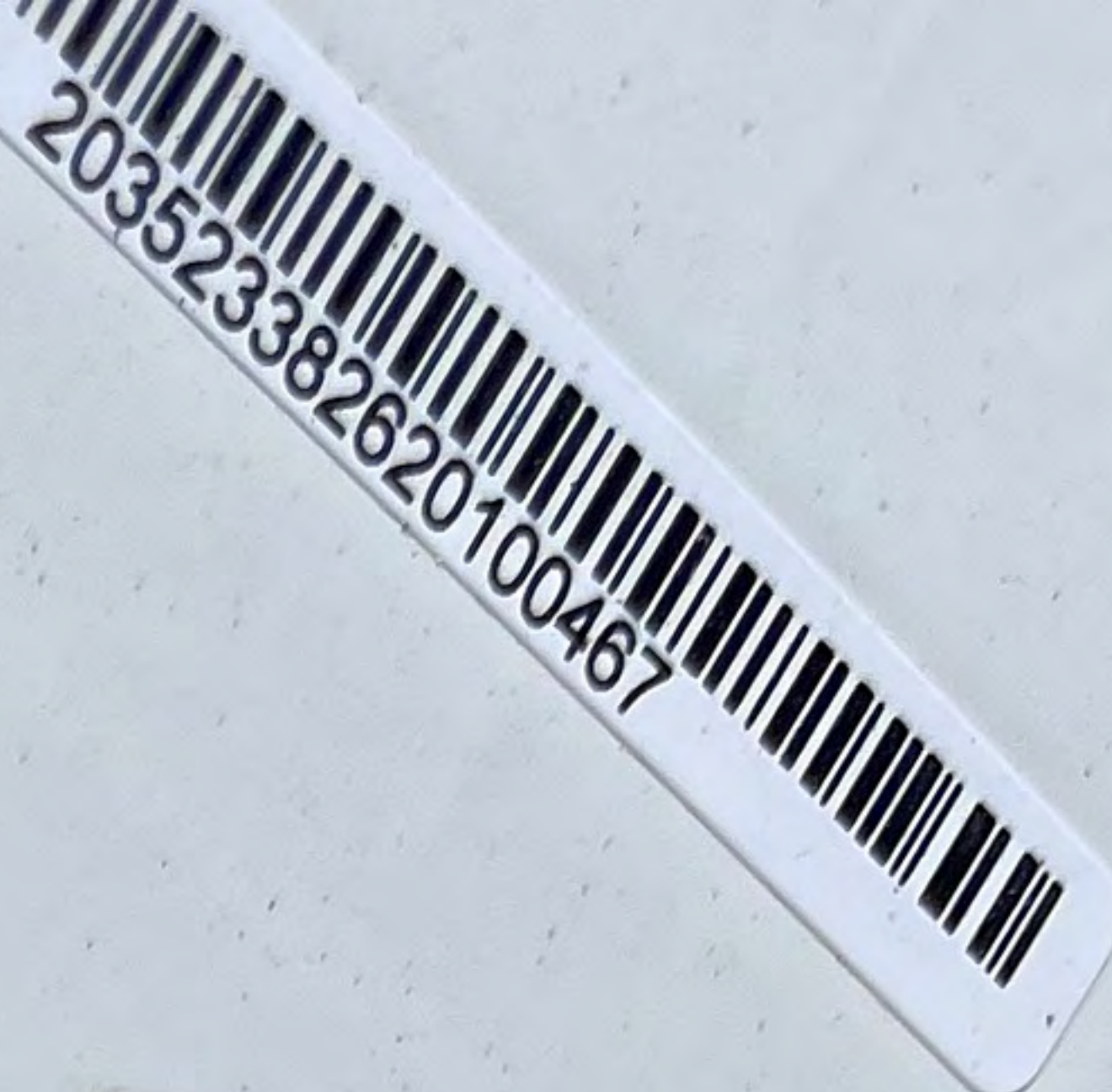


8-60V/14.5A
1V
NA02 SM3123-0180B2E82-D3
Mexico S440-1GM4MRM









We aim for a greener tomorrow with completely clean energy solutions

Q.PEAK DUO BLK ML-G10+ 405

PERFORMANCE AT STANDARD TEST CONDITIONS*

Nominal Power* (+5W/-0W)	P_{MPP}	[W]	405
Short circuit current*	I_{sc}	[A]	11.17
Open circuit voltage*	V_{oc}	[V]	45.34
Current at maximum power	I_{MPP}	[A]	10.38
Voltage at maximum power	V_{MPP}	[V]	37.39
Maximum system voltage	V_{sys}	[V]	1000(IEC) 1000(UL)
Weight	M	[kg/lbs]	22.0 / 48.5

Qcells

Assembled in USA



DANGER!
Risk of electric shock!
DO NOT connect or disconnect plug contacts while system is under load current. Refer to the installation and Operation Manual before installing, operating or servicing this unit.

DANGER!
Risque de choc électrique
NE PAS connecter ou déconnecter les connecteurs lorsque le système est en charge. Consultez le manuel d'installation et d'utilisation avant installation, utilisation et entretien du produit.

Fire Rating: Class C / Type 2
Fuse Rating: 20A

* Measurement tolerances: $P_{MPP} \pm 3\%$; I_{sc} , $V_{oc} \pm 5\%$ at STC: $1000W/m^2$, $25 \pm 2^\circ C$, AM 1.5 according to IEC 60904-3. Data given are rated (nominal) values.
IEC 61215:2016; IEC 61730:2016.



www.tuv.com
ID111220277

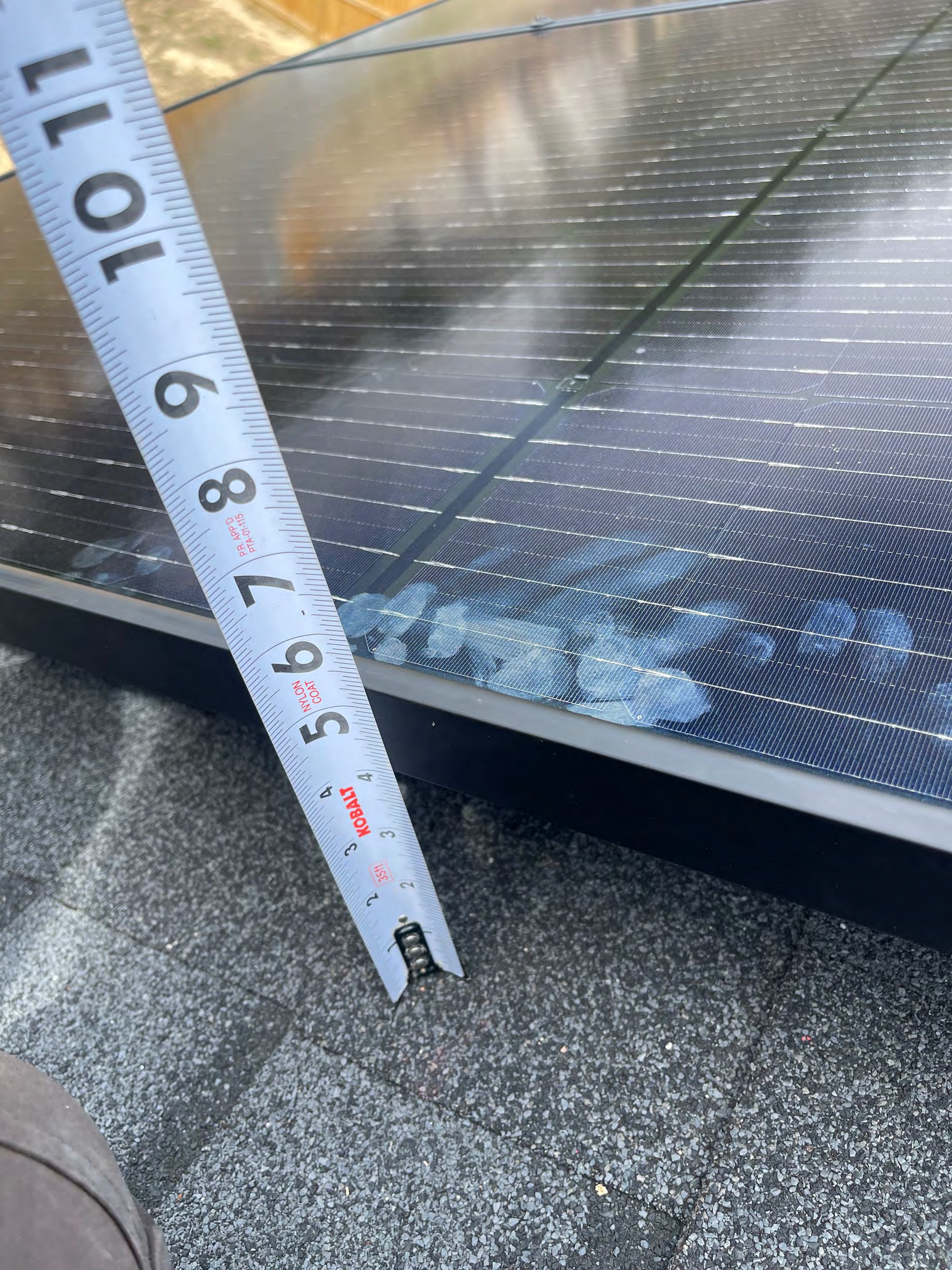


203523382620100467

Hanwha Q CELLS USA Inc.,
300 Nexus Drive, Dalton GA 30721, USA

U.S. Patent No. 9,893,319
(solar cells)

EMAIL servicing@qcells.com
WEB www.qcells.com



10 11

9

8

51-11-115
100
100
100

7

6

NYLON
COAT

5

4

4

3

3

2

2

1

1

0

0

0

0

0

0

KOBALT

5111

5111

5111

5111

5111

5111





NYLON COAT

5

4

KOBALT

35ft

2

3





NYLON COAT

KOBALT

35ft

2

3

4

5

6





MAX DC RATINGS
 MAX AC RATINGS
 ALLOWABLE WIRE
 AMBIENT OPERATING TEMP

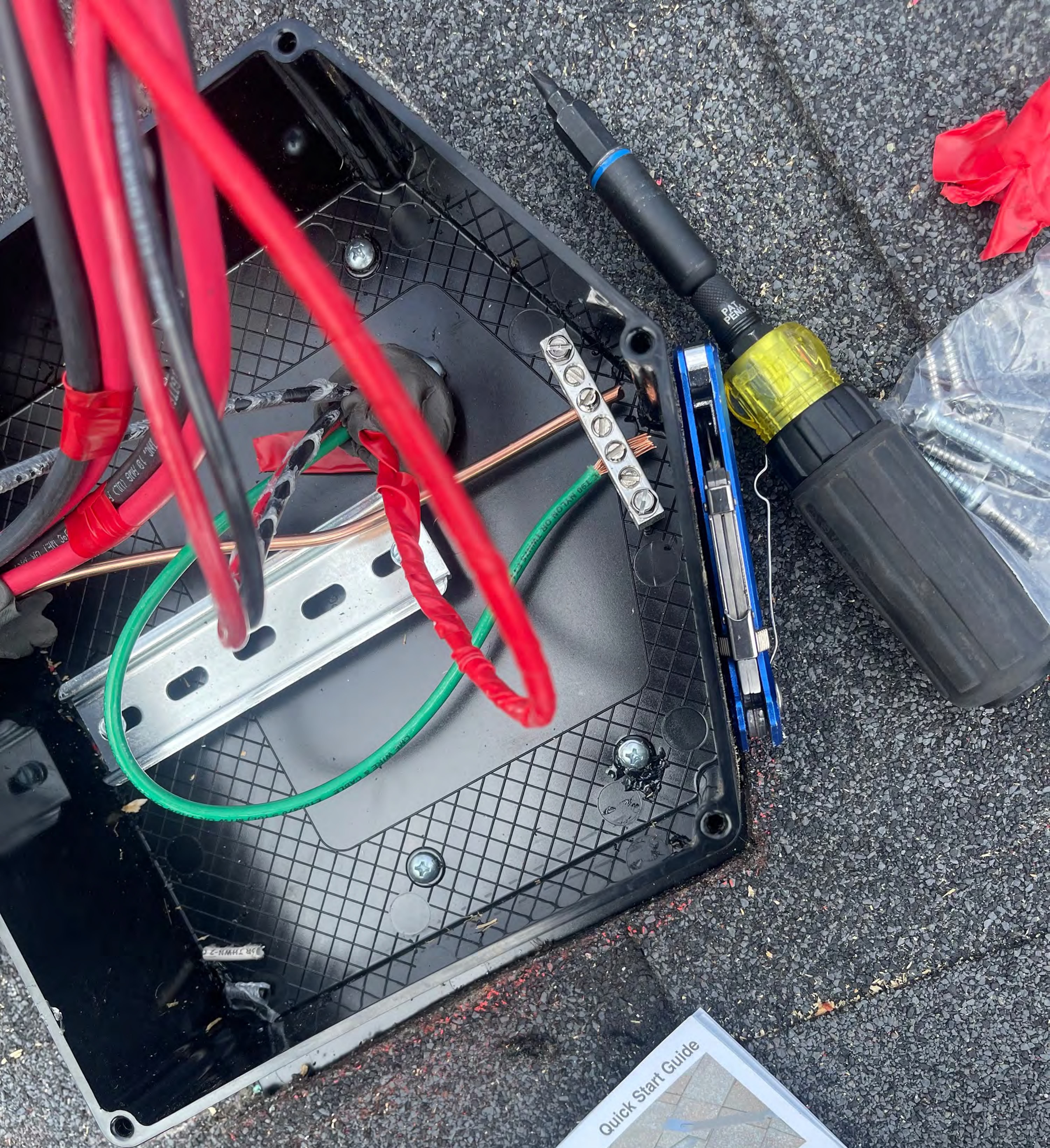
334 outlets
 200V
 2750W
 110V

WARNING! ⚠️
 RISK OF ELECTRICAL SHOCK DUE TO AC VOLTAGE SOURCES ARE CONNECTED INSIDE THE EQUIPMENT. EACH CIRCUIT MUST BE INDIVIDUALLY DEENERGIZED BEFORE SERVICING AND WHEN THE PHOTOVOLTIC ARRAY IS EXPOSED TO LIGHT, IT SUPPLIES VOLTAGE TO THE EQUIPMENT.

REFER TO INSTALLATION MANUAL
 VOLUME 200 CU INCHES
 TORQUE FOR ALL SCREWS & BOLTS: 15-20 LB-IN
 CONFORMS TO UL STANDARD 1741
 1-800-441-2211
<http://www.harsco.com/patents>

ETD
 Intertek
 5019942
 NEMA 3R





JB-1.2, JB-1.XL Quick Start Guide

STEP 1
Determine location for JB-1 on the roof surface. **USE THE LID AS A GUIDE**, and place the top of the lid 0-2" from the bottom of the 2nd course of shingles and trace the outline of the lid on the 1st course of shingles.

STEP 2
Place appropriately sized hole(s) into underside following the sealant complete, finish by installing





